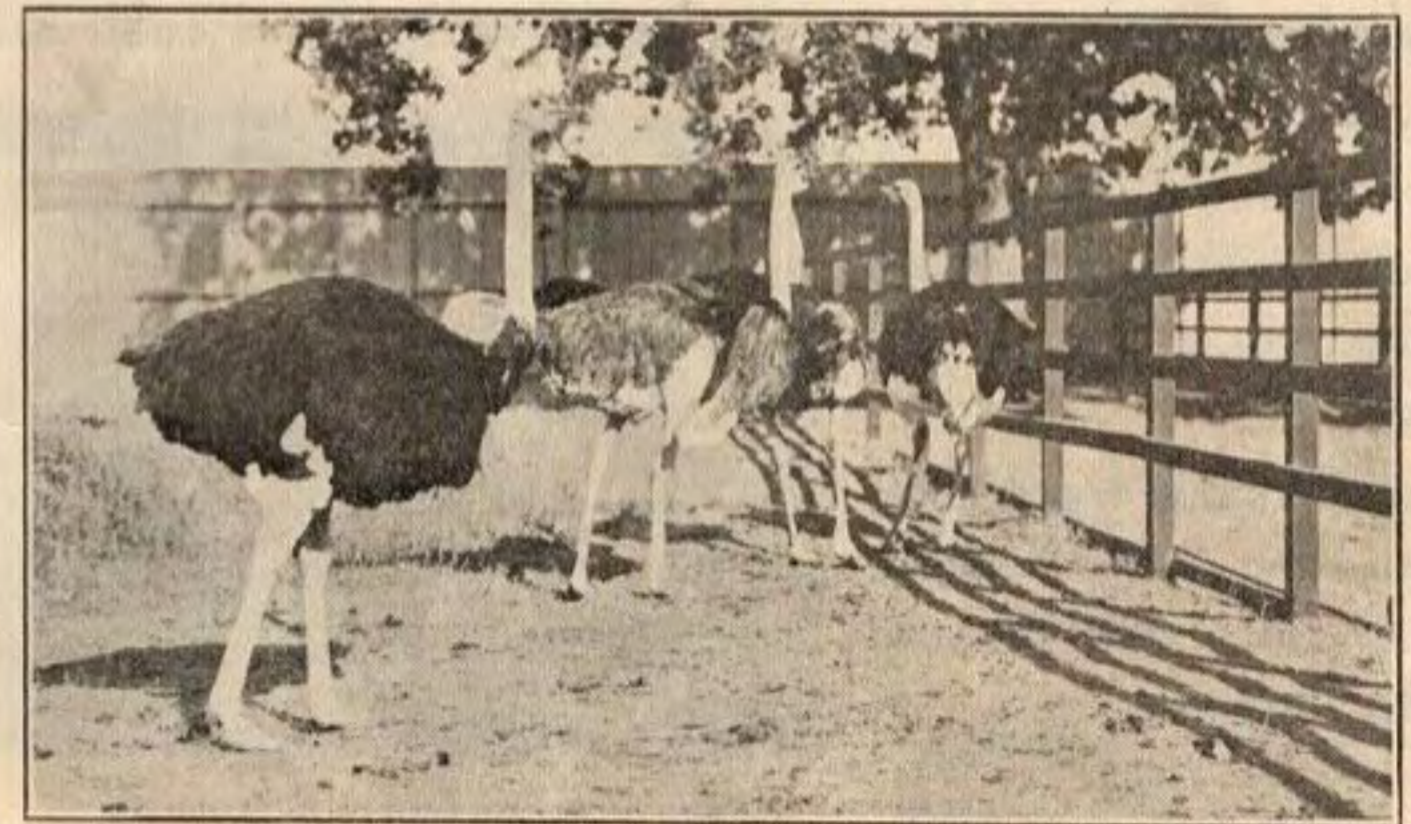


POINTS OF INTEREST

Don't Fail to See

ALONG THE ROUTE OF THE
NORTHERN ELECTRIC RAILWAY
 IN THE BEAUTIFUL
SACRAMENTO VALLEY



View of the Sacramento Ostrich Farm

For Further Information Call on or Address
S. W. RUSSELL, GENERAL PASSENGER AGENT
 803 JAY STREET, SACRAMENTO, CAL.



54 VIEW OF OROVILLE & EAST PITTS NORTHERN ELEC. RY.

OROVILLE.—The center of the greatest gold dredging operations in the world. A wondrous sight. This, aside from the busy city itself, which is exceptionally thriving. After leaving Oroville and going to the north, we pass through **DURHAM.**—A prosperous Northern California Town, with flouring mills and good surroundings, to **CHICO.**—The present terminal of the NORTHERN ELECTRIC RAILWAY, and when one considers its age on the one hand, and the immense match and sugar factories nearby, the city containing many beautiful homes, its hostleries not to be excelled by cities many times its population, and Chico Vecino (the famous Bidwell ranch), one would seem that they are in the East as well as the West. Beyond Chico, ten miles distant, with the best of stage facilities, are situated the well-known Richardson Health Springs, a visit to which will mean only health and pleasure. **HAMILTON.**—Trains leaving Chico at frequent intervals and passing to the west over the Sacramento River and through a section most beautiful and picturesque with the Coast Range as a background, the traveler arrives in the thriving city of Hamilton, at which place is located a \$1,000,000.00 Beet Sugar Factory, which is one of the greatest industries in the Sacramento Valley.

THE NORTHERN ELECTRIC RAILWAY IS A SAFELY, COMFORTABLY, RELIABLE AND ELECTRICALLY OPERATED ROAD



BROADWAY, CHICO

A
Prune
Orchard
in
the
Sacramento
Valley



The Orange in the Sacramento Valley is keeping pace with the other fruits, and the groves through which the Northern Electric trains pass, afford a most beautiful picture for the passenger.

An attraction which is not to be overlooked are the vast herds of cattle which

The trip over the Northern Electric offers a person an opportunity to view some of the largest Peach, Pear, Prune and Apricot orchards in California, passing directly in their midst.



Ranch
Scene
in
the
Sacramento
Valley

Drying
Fruit
Along
the
Line
of
the
Northern
Electric



pasture on the fields of alfalfa raised very extensively through the Valley.

Also may be frequently seen, acre after acre of fruit drying in the rays of the sun, for shipment to all parts of the world.