



**SANTA FE SAFETY FIRST**

Every employe should promptly report any unsafe condition or practice to his Supervisor.

**ASSISTANT SUPERINTENDENT**

C. F. LILLEY ..... Richmond, Calif.

**TRAINMASTERS**

K. R. HATFIELD ..... Bakersfield, Calif.  
 G. C. DADO ..... Fresno, Calif.  
 S. P. GEORGE ..... Stockton, Calif.  
 S. F. CROOK ..... Richmond, Calif.

**ASSISTANT TRAINMASTERS**

L. D. BURT ..... Bakersfield, Calif.  
 D. R. FARFAN ..... Fresno, Calif.  
 L. B. HARTMAN (Mgr. R. F. O.) ..... Pittsburg, Calif.

**ROAD FOREMEN OF ENGINES**

B. T. JOHNSTON ..... Bakersfield, Calif.  
 M. E. BROOKS ..... Fresno, Calif.

**SAFETY SUPERVISOR**

C. D. BREWER ..... Fresno, Calif.

**COAST LINES**

J. E. THORNTON ..... Los Angeles, Calif.  
*Supervisor of Air Brakes and General Road Foreman of Engines*

A. C. HENDERSON ..... Los Angeles, Calif.  
*Road Foreman of Engines (AMTRAK)*

**CHIEF TRAIN DISPATCHERS' OFFICE—FRESNO**

J. E. SIKES, Chief Dispatcher

**ASSISTANT CHIEF DISPATCHERS**

J. B. BONESTEEL    C. C. GRAHAM    D. R. MACIEL, JR.

**TRAIN DISPATCHERS**

R. D. RILEY	B. J. FLEMING
B. E. WALDRUM	G. E. BOWMAN
D. F. PAULS	G. L. RICHARDSON
D. M. ILER	T. B. ROSAL
M. S. BYRNE	M. A. LARSON
	J. Q. CASTRO

The  
**Atchison, Topeka and Santa Fe  
 Railway Co.**



**VALLEY DIVISION**

**TIME TABLE No.**

**11**

IN EFFECT

**Sunday, April 29, 1984**

At 12:01 A.M.  
 Pacific Standard Time

This Time Table is for the exclusive use  
 and guidance of Employees.

**Q.W. TORPIN**  
*General Manager*  
 LOS ANGELES, CALIF.

**D.M. MILLER - A.H. RENNE**  
**R.T. DENNISON**  
*Assistant General Managers*  
 LOS ANGELES, CALIF.

**J.M. MARTIN**  
*Superintendent*  
 FRESNO, CALIF.

## 2 MOJAVE AND ARVIN DISTRICTS

## VALLEY DIVISION

WESTWARD		TIME TABLE					EASTWARD	
↓		NO. 11					↑	
		April 29, 1984						
Ruling Grade Descending Feet Per Mile		STATIONS		Mile Post	Ruling Grade Descending Feet Per Mile	Communications Turn Tables and Wyes	Capacity of Sidings in Feet	
7.7	TCS	BARSTOW	746.4		C-R-Y	Yard		
24.5		11.7	HINKLEY	757.2	34.3		8011	
26.9		15.8	JIMGREY	772.9	34.3		8034	
34.3		11.0	BORON	784.0	28.0		8052	
19.0		5.6	SILT	789.6	0.0		8004	
0.0		7.5	EDWARDS	797.1	26.4	Y	8007	
26.4		6.4	BISSELL	803.6	34.3		8019	
0.0		6.5	SANBORN	810.1	24.3		8772	
		5.6	MOJAVE (70.1)	814.7	62.8	C-R	Yard	
		66.9	KERN JUNCTION	885.2		C-R		
0.0	2.5	BAKERSFIELD	887.7	15.8	C-R-T	Yard		
		(139.5)						

### SWITCHES—MAXIMUM AUTHORIZED SPEED

Maximum speed permitted through turnout of other than main track switches 10 MPH; all main track turnouts and crossovers 15 MPH except for spring and interlocked switches and crossovers at following locations:

- "I"—Interlocked Switch. "EE"—East End.  
 "S"—Spring Switch. "WE"—West End.

Station	Type	Location	MPH
Barstow	I	M.P. 743.6 two main track crossovers	50
Barstow	I	M.P. 743.6 auxiliary yard entry	50
Barstow	I	M.P. 745.7 EE Passenger Siding	20
Barstow	I	M.P. 745.8 Crossover	50
Barstow	I	M.P. 745.9 Yard Entry	50
Barstow	I	M.P. 746.8 WE Passenger Siding	20
Barstow	I	Crossover M.P. 746.8	50
Barstow	I	Departure Yard Lead M.P. 746.8	50
Barstow	I	Inspection Yard Lead M.P. 746.9	50
Barstow	I	Inspection Yard Lead M.P. 748.9	50
Barstow	I	North Departure Yard Lead M.P. 749.0	50
Barstow	I	South Departure Yard Lead M.P. 749.1	50
Barstow	I	2 Crossovers M.P. 749.2	50
Barstow	I	Mojave District Jct. M.P. 749A.0	50
Barstow	I	Mojave District Receiving Yard Lead M.P. 749A.9	30
Hinkley	I	EE and WE siding	40
Jimgrey	I	EE and WE siding	40
Boron	I	EE and WE siding	40
Silt	I	EE and WE siding	40
Edwards	I	EE and WE siding	40
Bissell	I	EE and WE siding	40
Sanborn	I	EE and WE siding	40
Kern Jct.	I	Jct. to S.P.	30
Bakersfield	S	End of DT M.P. 888.2	15

### BARSTOW YARD

Maximum Speed Through Following Power Switches:	
EE on WE Inspection Yard Tracks 1-2 and 1-3 (Interlocked)	50
Jct. of High and Low Leads on Yard Entry Track from Needles	30
Maximum Speed on Low Lead	15
Crossovers Between First and Mojave Dist. Yard Entry Tracks	30
EE and WE All Receiving Yard Tracks	30
EE Departure Yard Tracks D-1 through D-5	30
WE All Departure Yard Tracks	30
Crossover Between North Departure Lead and South Departure Lead	
WE Departure Lead	30
Crossover Between WE Inspection Yard Track 1103 and WE Departure Yard Track 1201	30
EE Departure Yard Tracks D-6 through D-10	15
Maximum Speed on Balloon Track	10

Normal position for spring switch at end of DT Bakersfield M.P. 888.2 is for south track.

Rule 97(A): Trains must get clearance card before leaving Barstow and Bakersfield. Between Kern Junction interlocking and M.P. 814.5 at east end of Mojave yard. The following will govern:

- Current Southern Pacific Timetable and Timetable Bulletins.
- Santa Fe Rules Operating Department and certain Southern Pacific definitions and modifications outlined in pamphlet form available at Trainmaster's Office, Bakersfield.

Rule 251 in effect between Kern Jct. and M.P. 887.4 at Bakersfield.

TCS in effect on main track and sidings between Barstow and M.P. 814.5 at Mojave.

Rule 311: At Barstow, a signal displaying a flashing yellow over lunar aspect is named "APPROACH-THIRTY" and the indication is, "Proceed, approach next signal not exceeding 30 MPH prepared to enter diverging route at prescribed speed; if exceeding medium speed, immediately reduce to medium speed."

Rule 94 in effect:

Between Kern Jct. and M.P. 889.2 Bakersfield.

### MAXIMUM AUTHORIZED SPEED FOR TRAINS

LOCATION	Psgr.	Ft.
MOJAVE DISTRICT	70	55
SPEED RESTRICTIONS MPH		
2 curves M.P. 746.4 to 747.0		50
Curve M.P. 747.0 to 749A.0		60
Curve M.P. 749A.0 to 749A.8		45
Curve M.P. 749A.8 to 750.5		50
Curve M.P. 750.5 to 751.3		60
2 curves M.P. 813.5 to 814.5		40
Kern Jct. to Bakersfield		20
Approaching "F" Street Crossing M.P. 887.7		10
P. C. Borax Co. Spur		20
Government Spur M.P. 785.0		20
Government Spur M.P. 797.1		20

In TCS sidings, speed limit 40 MPH, except Boron-30 MPH while head end of train is passing over switches to P.C. Borax Spur, and east and west end house track, and at Edwards over wye switches.

ARVIN DISTRICT 20

### SPEED RESTRICTIONS

Curve M. P. 316.7 to 317.1	10
Curve M. P. 324.2 to 324.4	10
Curve M. P. 329.7 to 329.9	10

### ARVIN DISTRICT

WESTWARD		TIME TABLE					EASTWARD	
↓		NO. 11					↑	
		April 29, 1984						
Ruling Grade Descending Feet Per Mile		STATIONS		Mile Post	Ruling Grade Descending Feet Per Mile	Communications Turn Tables and Wyes	Capacity of Sidings in Feet	
37.0	TCS	ARVIN	YL	333.1	42.2		4859	
42.2		4.3	DI GIORGIO	YL	328.8		Y	
43.3		2.0	RIBIER	YL	326.8	0.0		3273
43.3		2.2	LAMONT	YL	324.6	0.0		2643
43.3		1.1	WEST LAMONT	YL	323.5	0.0		
43.3		6.6	ALGOSO	YL	316.9	0.0		
43.3		0.3	MAGUNDEN	YL	316.6	0.0		
			(16.5)					

Rule 93: Yard limits Arvin to Magunden, inclusive.

### LENGTH OF STEMS OF WYES

Barstow	Mojave District
Edwards	Government Spur
Di Giorgio	ARVIN DISTRICT
	500 Ft.

### STATIONS OR TRACKS NOT SHOWN IN SCHEDULE

#### MOJAVE DISTRICT

Location	Mile Posts	Capacity	Switch Connection
P. C. Borax Co. Spur	784.7	7.4 miles	East
Government Spur	785.0	3.7 miles	East
Government Spur	797.1	6.5 miles	East & West
Harpertown	321.1	1000 Feet	East & West
Patch	325.9	750 Feet	East

**VALLEY DIVISION**

**FIRST DISTRICT 3**

WESTWARD		Ruling Grade Descending Feet Per Mile	TIME TABLE		Mile Post	Ruling Grade Descending Feet Per Mile	Capacity of Sidings in Feet	EASTWARD	
FIRST CLASS			NO. 11					FIRST CLASS	
709	711		April 29, 1984					708	710
Leave Daily	Leave Daily	STATIONS		Arrive Daily	Arrive Daily				
PM 4.05	AM 6.05	16.5	BAKERSFIELD	887.7	13.3	Yard	PM 1.45	PM 10.50	
			3.4	JASTRO		891.1	E-8726 W-8155		
			14.7	6.6 UNA		897.7	9.2	9015	
			0.0	7.7 SHAFTER		905.4	0.0	E-4833 W-8963	
s 4.30	s 6.30		10.8	7.6 WASCO		913.0	0.0	8568	s 1.10 s 10.15
			16.8	8.2 ELMO		919.2	0.0	8964	
			16.8	5.4 SANDRINI		924.8	0.0	9032	
			8.4	7.7 ALLENSWORTH		932.3	0.0	8948	
			1.7	9.8 ANGIOLA		942.1	9.5	8999	
			2.8	8.8 CORCORAN		950.9	4.1	E-5990 W-9951	
			0.0	9.4 GUERNSEY		960.3	4.1	8879	
s 5.17	s 7.17		0.0	7.6 S. P. Crossing HANFORD		967.9	5.8	E-8963 W-4490	s 12.23 PM s 9.28
			0.0	5.3 SHIRLEY		973.2	10.8	9055	
			16.8	9.0 CONEJO		982.2	14.6	9051	
			0.0	8.1 BOWLES		988.3	10.8	8959	
			0.0	6.1 S. P. Crossing		994.4	10.8		
5.43 PM	7.43 AM	4.2	0.8 CALWA	995.2	0.0	Yard	11.57 AM 9.02 PM		
Arrive Daily	Arrive Daily		(107.5)			Leave Daily	Leave Daily		
(65.8)	(65.8)	Average speed per hour		(59.7)	(59.7)				

Trains must get clearance card before leaving Bakersfield and Calwa. TCS in effect on main tracks and sidings, between M.P. 889.2 Bakersfield and Calwa.  
Rule 94 in effect between Kern Jct. and M.P. 889.2 Bakersfield.  
Rule 6(B): Calwa C-R-T-Y; Bakersfield C-R-T; Corcoran B-Y; Shafter & Wasco B; Jastro Y.

**MAXIMUM AUTHORIZED SPEED FOR TRAINS**

LOCATION	MPH
FIRST DISTRICT	79
<b>SPEED RESTRICTIONS</b>	
Bakersfield M.P. 887.5 to 889.0	20
Approaching "F" Street Crossing M.P. 887.7	10
1 Curve M.P. 889.3 to 889.6	30
1 Curve M.P. 889.8 to 890.1	40
Curve M.P. 892.9 to 893.3	65
Hanford and 1 Curve M.P. 967.5 to 969.5	45
3 Curves M.P. 973.7 to 975.8	45
M.P. 994.2 to 995.2	40
Alpaugh Spur	20

In TCS sidings, speed limit 40 MPH except west siding Hanford is 20 MPH and east siding Corcoran, speed limit 30 MPH.

**SWITCHES—MAXIMUM AUTHORIZED SPEED**

Maximum speed permitted through turnout of other than main track switches 10 MPH; all main track turnouts and crossovers 15 MPH except for spring and interlocked switches and crossovers at following locations:

- "I"—Interlocked Switch.
- "ESL"—Electric Switch Lock.
- "S"—Spring Switch.
- "EE"—East End.
- "WE"—West End.

Station	Type	Location	MPH
Bakersfield	S	End of DT M.P. 888.2	15
	I	Turnout WE yard to main track	15
Jastro	I	EE siding	30
	I	WE siding and crossover	40
	I	Porterville-Orosi Jct. switch	30
Una	I	EE and WE siding	40
Shafter	I	EE and WE siding and crossover	40
Wasco	I	EE and WE siding	40
Elmo	I	EE and WE siding	40
Sandrini	I	EE and WE siding	40
Allensworth	I	EE and WE siding	40
Stoil	ESL	EE and WE storage	30
Angiola	I	EE and WE siding	40
Blanco	ESL	Industry track switches	30
Corcoran	I	EE and WE east siding	20
	I	EE and WE west siding	40
Guernsey	I	EE and WE siding	40
Hanford	I	EE and WE east siding	40
	I	EE and WE west siding	20
Shirley	I	EE and WE siding	40
Laton	ESL	EE and WE siding (not signaled)	15
Conejo	I	EE and WE siding	40
Bowles	I	EE and WE siding	40
Calwa	I	Turnout EE yard to main track	15
	I	End of two tracks	30

Normal position for junction switches:

Corcoran for First District siding

Normal position for spring switch at end of DT Bakersfield M.P. 888.2 is for south track.

**STATIONS OR TRACKS NOT SHOWN IN SCHEDULE**

Location	Mile Post	Capacity in Feet	Switch Connection
Rosedale	895.7	2088	East & West
Crome	899.5	1700	West
Palmo	910.5	1400	West
Pond	921.2	2000	East
Stoil	936.0	4693	East & West
Alpaugh Spur	936.0	5.6 miles	West
West Isle	5.6	1344	West
Blanco	945.9	2400	East & West
Kings Park	964.0	7571	East & West
Laton	976.0	3515	East & West
Monmouth	985.6	1324	East & West

**LENGTH OF STEMS OF WYES**

Jastro	Porterville-Orosi District
Corcoran	Visalia District
Calwa	Visalia District

**RAILROAD CROSSINGS AT GRADE**

Location	Tracks Governed	Type
Hanford	S. P. Coalinga branch.	TCS.
Calwa	0.8 East S. P. main track.	TCS.

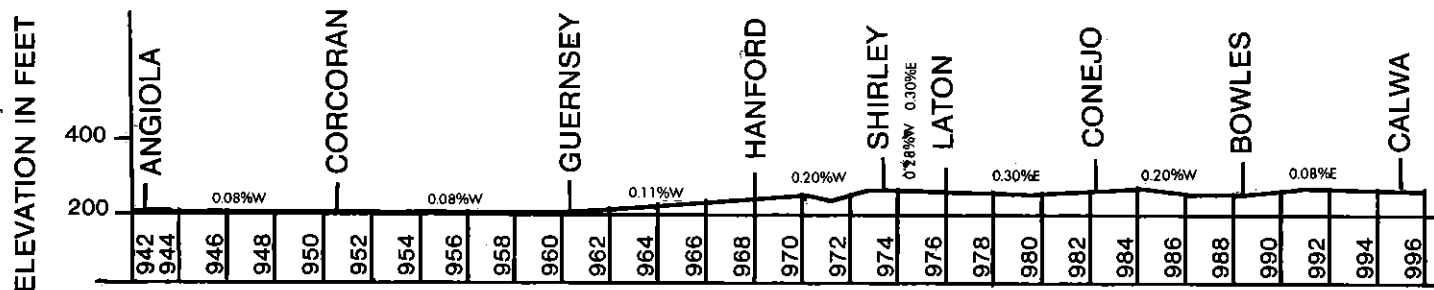
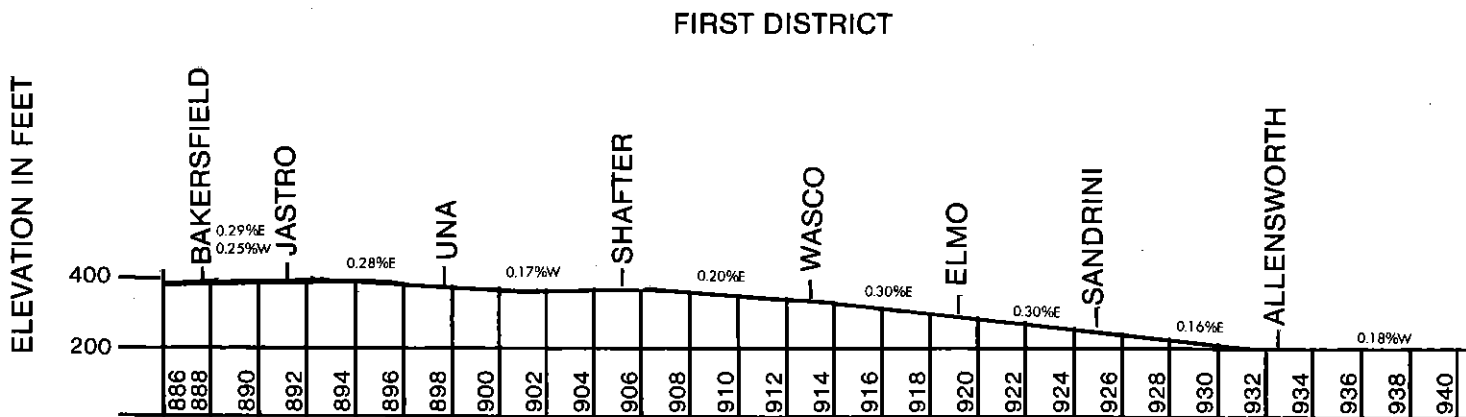
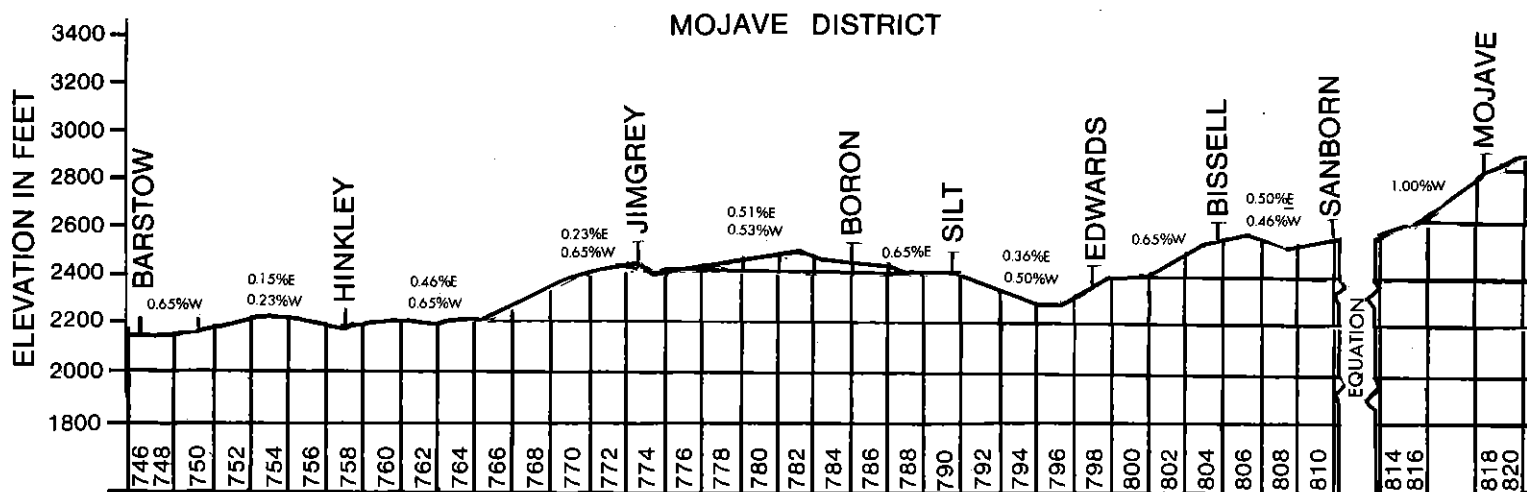
**TRACK SIDE WARNING DEVICES  
SPECIAL RULE 7**

Location	Type	Signals Affected
M.P. 946.3	Highwater	Signals 9461 and 9482

CROSSING SPEED RESTRICTIONS

Speed may be resumed when engine has passed resume speed signal.

Eastward		Westward	
M.P. 993.9	to 992.8	M.P. 896.0	to 896.6
M.P. 986.8	to 986.2	M.P. 896.7	to 897.3
M.P. 985.0	to 984.4	M.P. 916.4	to 917.0
M.P. 980.2	to 979.6	M.P. 931.5	to 932.1
M.P. 973.7	to 973.2	M.P. 946.4	to 947.0
M.P. 967.5	to 967.0	M.P. 949.9	to 951.7
M.P. 951.1	to 950.5	M.P. 964.4	to 967.0
M.P. 946.6	to 945.9	M.P. 975.8	to 976.2
M.P. 932.7	to 932.1	M.P. 979.0	to 979.6
M.P. 917.6	to 917.0	M.P. 984.6	to 985.2
M.P. 911.0	to 910.4	M.P. 993.6	to 994.1
M.P. 897.2	to 896.6		



**VALLEY DIVISION**

**PORTERVILLE-OROSI AND OIL CITY DISTRICTS 5**

WESTWARD ↓	Ruling Grade Descending Feet Per Mile	TIME TABLE NO. 11 April 29, 1984		Mile Post	Ruling Grade Descending Feet Per Mile	Communications Turn Tables and Wyes	Capacity of Sidings in Feet	EASTWARD ↑
		STATIONS						
		JASTRO		114.0		Y	E 6726 W 6155	
	0.0	0.5 LANDCO YL		113.5	13.8		1450	
	61.5	2.8 OIL JUNCTION YL		110.7	0.0		1436	
		38.8 DUCOR YL		71.9				
	52.8	5.9 ULTRA		66.0	52.8			
	52.8	7.0 PORTERVILLEJCT.YL		69.0	52.8			
	33.2	S. P. Crossing 0.8 PORTERVILLE YL		58.2	0.0	Y		
	52.8	6.3 STRATHMORE		51.9	52.8		1645	
	31.4	5.2 LINDSAY		46.7	31.1		1729	
	34.8	7.5 EXETER		39.2	15.8			
	0.0	0.3 Visalia Eleat. Crossing		38.9	15.8			
	5.3	2.2 VENIDA		36.7	15.8			
	8.9	5.5 HILLMAID		31.2	21.1			
	30.8	0.1 Visalia Eleat. Crossing		31.1	20.8			
	30.8	1.0 REDBANKS		30.1	20.8			
	20.8	1.8 CAIRNS		28.3	0.0			
	17.4	1.4 RAYO		26.9	0.0			
	17.4	6.3 WYETH YL		20.6	15.3	Y		
	26.8	1.6 CUTLER YL					3371	
		1.6 WYETH YL		20.6	0.0	Y		
	0.0	2.0 OROSI YL		18.6	14.4			
	15.2	6.4 ORANGE COVE YL		12.2	30.3			
		(101.8)						

Between Oil Junction and Ducor the following will govern:  
 A. Current Southern Pacific Timetable and Timetable Bulletins.  
 B. Santa Fe Rules Operating Department and certain Southern Pacific definitions and modifications outlined in pamphlet form available at Trainmaster's Office, Bakersfield.

Rule 93: Yard limits are located at:  
 Jastro to Oil Jct.,  
 Ducor (Santa Fe tracks only),  
 Porterville to and including Porterville Jct.,  
 Cutler to and including Wyeth and  
 Wyeth to and including Orange Cove via Orosi.

**MAXIMUM AUTHORIZED SPEED FOR TRAINS**

LOCATION	MPH
PORTERVILLE-OROSI DISTRICT	40
<b>SPEED RESTRICTIONS</b>	
Track M.P. 11.2 to 13.0	10
Track M.P. 13.0 to Cutler	20
Exeter M.P. 39.1 to 39.6	20
Lindsay M.P. 46.1 to 47.1	20
2 Curves M.P. 61.5 to 62.1	30
Between Oil Junction and Jastro	20
OIL CITY DISTRICT	20

**SWITCHES—MAXIMUM AUTHORIZED SPEED**

Maximum speed permitted through turnout of other than main track switches 10 MPH; all main track turnouts and crossovers 15 MPH.

Normal position of junction switches:  
 Wyeth for Porterville-Orosi District

**LENGTH OF STEMS OF WYES:**

Location	Feet
Wyeth	1.6 Miles
Porterville	1143

**RAILROAD CROSSINGS AT GRADE**

Location	Tracks Governed	Type
Hillmaid . . . . 0.1 West	Visalia Elec.	98(B) and 98(C)
Exeter . . . . . 0.3 West	Visalia Elec.	98(B) and 98(C)
Porterville . . . 0.8 East	S. P. Success branch.	98(B) and 98(C)

**STATIONS OR TRACKS NOT SHOWN IN SCHEDULE**

Location	Mile Post	Capacity in Feet	Switch Connection
Neil	40.6	1000	West
Cleary	44.4	1277	West
Strathmore Spur	52.0	1.2 miles	East
Euclid	54.3	1100	West
Sunland Spur	61.4	1 mile	West
Magnolia	61.9	700	East

**OIL CITY DISTRICT**

WESTWARD ↓	Ruling Grade Descending Feet Per Mile	TIME TABLE NO. 11 April 29, 1984		Mile Post	Ruling Grade Descending Feet Per Mile	Communications Turn Tables and Wyes	Capacity of Sidings in Feet	EASTWARD ↑
		STATIONS						
	0.0	2.2 OIL JUNCTION YL		308.6	21.1	Y	1436	
	0.0	0.8 SEGURO YL		310.8	10.5		1481	
		0.8 MALTHA YL		311.6			1149	
		(3.9)						

Rule 93: Yard limits Oil Junction to Maltha, inclusive.

# 6 SECOND DISTRICT

# VALLEY DIVISION

WESTWARD		Ruling Grade Descending Feet Per Mile	TIME TABLE NO. 11 April 29, 1984	Mile Post	Ruling Grade Descending Feet Per Mile	Capacity of Sidings in Feet	EASTWARD	
FIRST CLASS							FIRST CLASS	
709	711						708	710
Leave Daily	Leave Daily	Arrive Daily	Arrive Daily					
PM 5.43	AM 7.43		CALWA	995.2		Yard	AM 11.57	PM 9.02
		2.6	1.6 S. P. Crossing	996.8	15.8			
		2.6	1.3		15.8			
s 5.51	s 7.51		FRESNO	998.1		Yard	s 11.50	s 8.55
5.56	7.56	5.3	2.0		15.8		s 11.46	s 8.51
		5.3	HAMMOND	1000.1	15.8	1900		
		5.3	4.9		15.8	8514		
		15.8	FIGARDEN	1005.0	10.6	8950		
		15.8	6.3		15.8	8984	s 11.16	s 8.21
s 6.24	s 8.24		GREGG	1011.3	15.8	9083		
		15.8	8.3		15.8			
		15.8	MADERA	1019.6	15.8			
		0.0	5.8		7.4			
		15.8	KISMET	1025.5	15.8	13900		
		15.8	5.7		15.8			
		15.8	SHARON	1031.1	5.3	8978		
		15.8	10.4		5.3	8978		
		12.7	LE GRAND	1041.5	0.0	9668		
		17.4	5.8		5.3	10915	s 10.46	s 7.51
s 6.55	s 8.55		PLANADA	1047.3	18.0	8989		
		20.0	8.8		18.0	8999		
		15.8	MERCED	1056.1	15.8	8964		
		15.3	6.8		22.7	8971		
		0.0	FLUHR	1062.9	26.4	8971		
		15.8	8.8		15.8	7231	s 10.11	s 7.16
		15.8	BALISCO	1071.7	0.0	9254		
		15.8	7.9		0.0	8968		
		5.3	DENAIR	1079.6	0.0	7914		
		10.3	9.6		0.0			
		10.3	MODESTO-EMPIRE JCT.	1089.2	0.0			
		1.8	6.4		1.6	6794	s 9.41	s 6.46
s 8.00	s 10.00	0.6	RIVERBANK	1095.6	0.0	4881	9.34	6.39
8.07	10.07	0.0	6.0		0.0	3674		
		0.0	ESCALON	1101.6	0.8	4943	9.28	6.33
		5.3	8.0		11.6			
		10.6	DUFFY	1109.6	0.0	3558	9.21	6.26
		10.6	10.4		3.2			
		0.0	MORMON	1120.0	6.3	8075	9.15	6.20
		6.6	0.7		3.6			
		15.8	W. P. Crossing	1120.7	13.2	5580	9.08	6.13
		15.8	STOCKTON TOWER	1120.7	0.0			
		6.6	8. P. Crossing		15.8	6380	9.00	6.05
		15.8	STOCKTON YL	1121.4	15.8	5363	8.50	5.55
		0.0	5.2		0.0	3456	AM	PM
		0.0	GILLIS	1126.6	52.8	3894		
		0.0	2.7		52.8	4936		
		5.3	HOLT	1129.3	0.0	1800		
		10.6	3.7		0.0			
		10.6	TRULL	1133.0	49.6	5310		
		10.6	1.8		52.8	5373		
		0.0	MIDDLE RIVER	1134.8	51.7			
		0.0	2.0					
		6.6	ORWOOD	1136.8				
		15.8	3.0					
		15.8	BIXLER	1139.8				
		0.0	3.2					
		0.0	KNIGHTSEN	1143.0				
		15.8	3.1					
		15.8	OAKLEY YL	1146.1				
		15.8	4.2					
		6.6	SANDO YL	1150.3				
		15.8	1.8					
		15.8	ANTIOCH YL	1152.1				
		15.8	3.7					
		0.0	PITTSBURG YL	1155.8				
		0.0	7.8					
		0.0	PORT CHICAGO	1163.3				
		0.0	3.3					
		52.8	MALTBY	1166.9				
		52.8	6.8					
		52.8	GLEN FRAZER YL	1173.4				
		52.8	2.6					
		52.8	CHRISTIE YL	1176.0				
		52.8	3.1					
		29.9	COLLIER YL	1179.1				
		52.8	2.4					
		52.8	PINOLE YL	1181.5				
		52.8	3.9					
		52.8	GATELEY YL	1182.6				
		52.8	3.9					
		52.8	RHEEM	1186.6				
		52.8	3.1					
			RICHMOND YL	1189.6				
			(194.4)					
Arrive Daily	Arrive Daily						Leave Daily	Leave Daily
(52.5)	(52.5)		Average speed per hour				(53.9)	(53.9)

Trains must get clearance card before leaving Calwa and Richmond, and westward trains must get clearance card before leaving Stockton Tower.

No. 708 and No. 710 must get Santa Fe clearance card at Martinez Station on Southern Pacific.

At Port Chicago, only First Class trains will register. Both Santa Fe and Southern Pacific trains will register on Southern Pacific train register form 2561.

Conductor No. 709 and No. 711 leave message or form 903 with Operator Martinez, reporting arrival at Port Chicago on Santa Fe. Conductor No. 708 and No. 710 will leave message or form 903 at Pittsburg, reporting arrival at Port Chicago on Southern Pacific.

At Port Chicago, No. 708 and No. 710 will originate and No. 709 and No. 711 will terminate on the siding and schedule time will apply at the east siding switch, and trains and engines may use main track to clear the time of No. 708 and No. 710, and No. 709 and No. 711 as required by Rule 86(A).

Rule 5 (b): At Stockton, train order waiting time for Westward trains applies at West Switch to TCS Siding located 1550 feet west of MP 1122.

TCS in effect on main tracks and sidings, except on siding Hammond, between Calwa and signal located 1550 feet west of MP 1122 Stockton.

Rule 93: Yard limits are located at:

- Stockton,
- Oakley to and including Pittsburg,
- Glen Frazer to Gateley and
- Richmond.

A.T. & S.F. trains will operate over Southern Pacific tracks between Richmond and Oakland and will be governed by A.T. & S.F. Rules and Instructions insofar as they are not in conflict with Southern Pacific Rules and Regulations, and by Southern Pacific Rules which are listed in bulletin instructions, and by Western Division Timetable and Timetable Bulletins, Special Notices and Instructions.

Rule 6(B): Calwa & Richmond C-R-T-Y; Stockton Tower, Orwood & Pittsburg C-R; Fresno C; Mormon R-Y; Madera, Gillis, Holt, Trull, Middle River, Bixler, Knightsen, Sando, Antioch, Port Chicago, Glen Frazer, Christie, Collier, Pinole, Gateley & Rheem B; Stockton and Riverbank Y.

Rule 321: At San Joaquin River Bridge when west signal located at MP 1123.7 or eastward signal located at MP 1124.0 or at Middle River Bridge westward signal located at MP 1134.6 or eastward signal located at MP 1134.9 indicate "stop," trains must stop, unless otherwise restricted, proceed with member of crew preceding movement over bridge and movement must be made at restricted speed to the next governing signal.

At Glen Frazer, when Signal 11731 or signal governing movement from west end siding to main track is in stop position train may obtain proceed signal if route is clear by inserting switch key in governing signal box and turning to right. When westward train on auxiliary siding, signal governing movement from auxiliary track to main track is in stop position, may obtain proceed signal if route is clear by lining switch for main track.

(Continued from Page 6)

At Christie, eastward train on main track to meet westward train, must not pass preliminary board in advance of Signal 11752 until westward train has entered siding. Eastward train on siding must remain west of spotting section, until ready to depart. Spotting section designated by sign near signal at east end of siding. Eastward train, when ready to proceed, must occupy spotting section between sign and signal; signal will clear in 45 seconds if main track is clear between west end of Glen Frazer and Signal 11782 at east end of Collier. If train is occupying section of main track between east end of Christie and Signal 11782 at east end of Collier, the signal will not clear before two and one-half minutes.

**MAXIMUM AUTHORIZED SPEED FOR TRAINS MPH**

LOCATION	Psg.	Ft.
Calwa to Port Chicago	79	55
Port Chicago to Richmond	70	55

**SPEED RESTRICTIONS MPH**

M.P. 995.2 to 995.5	40
2 Curves M.P. 995.5 to 996.8	35
M.P. 996.8 to 1002.0	20
M.P. 1002.0 to 1003.2	50
Curve M.P. 1047.5 to 1047.9	65
Curve M.P. 1053.7 to 1054.1	65
Merced Crossings M. P. 1055.7 to 1057.0	30
2 Curves M.P. 1069.1 to 1070.5	65
Curve M.P. 1087.9 to 1088.1	50
Curve M.P. 1119.1 to 1119.5	55
Stockton M.P. 1120.0 to 1121.7 (Lincoln St.)	20
Bridge M. P. 1134.7 to 1136.4	30
Curve M.P. 1139.5 to 1139.8	55
Antioch M. P. 1151.2 to 1151.9	45
Curve and Crossing M.P. 1155.1 to 1156.3	45
2 Curves M.P. 1161.3 to 1161.9	45
6 Curves M.P. 1167.3 to 1170.5	45
26 Curves and Tunnel No. 3 M.P. 1170.5 to 1180.9	35
7 Curves M.P. 1180.9 to 1185.1	45
1 Curve M.P. 1185.1 to 1185.4	35
3 Curves M.P. 1185.4 to 1189.0	45
2 Curves M.P. 1189.0 to 1189.6	20
Oakdale Spur	25

In TCS sidings, speed limit 40 MPH.

**SWITCHES—MAXIMUM AUTHORIZED SPEED**

Maximum speed permitted through turnout of other than main track switches—10 MPH; all main track turnouts and crossovers—15 MPH; except for spring and interlocked switches and crossovers at following locations:

"I"—Interlocked Switch. "EE"—East End.  
 "S"—Spring Switch. "WE"—West End.

Station	Type	Location	MPH
Calwa	I	2 crossovers MP 996.8	30
	I	Turnout yard lead to south main track MP 996.8	15
Fresno	I	End of two tracks	20
Figarden	I	EE and WE siding	40
Gregg	I	EE and WE siding	40
Madera	I	EE and WE siding	40
Kismet	I	EE and WE siding	40
Sharon	I	EE and WE siding	40
Legrand	I	EE and WE siding	40
Planada	I	EE and WE siding	40
Merced	I	EE siding	40
	I	WE siding	30
Fluhr	I	EE and WE siding	40
Ballico	I	EE and WE siding	40
Denqir	I	EE and WE siding	40
Empire	I	EE and WE siding	40
Riverbank	I	EE and WE of lead	15
	I	EE and WE siding	40
Escalon	I	EE and WE siding	40
Duffy	I	EE and WE siding	40
Mormon	I	EE siding	40
	I	2 crossovers	30
Stockton	I	WE siding	30
Gillis	S	EE and WE siding	30
Holt	S	EE and WE siding	30
Trull	S	EE and WE siding	30
Orwood	I	EE siding	15
	S	WE siding	30
Knightsen	S	EE and WE siding	30
Sando	S	EE siding	30
	S	WE siding	15
Pittsburg	S	EE siding	15
	S	WE siding	30
Port Chicago	S	EE and WE siding	30
Maltby	S	EE and WE siding	30
Glen Frazer	S	EE and WE siding	30
Christie	S	EE and WE siding	30
Collier	S	EE siding	30
Gateley	S	EE and WE siding	30
Rheem	S	EE and WE siding	30

**CROSSING SPEED RESTRICTIONS**

Speed may be resumed when engine has passed resume speed signal.

Eastward		Westward	
M.P. 1160.5	to 1159.9	M.P. 1003.8	to 1004.2
M.P. 1154.7	to 1154.1	M.P. 1014.5	to 1015.1
M.P. 1151.3	to 1150.9	M.P. 1039.2	to 1039.8
M.P. 1147.8	to 1147.2	M.P. 1057.2	to 1057.7
M.P. 1141.6	to 1141.0	M.P. 1063.4	to 1064.0
M.P. 1125.8	to 1125.2	M.P. 1083.2	to 1083.8
M.P. 1118.5	to 1117.9	M.P. 1088.9	to 1089.5
M.P. 1098.9	to 1098.3	M.P. 1097.7	to 1098.3
M.P. 1090.1	to 1089.3	M.P. 1106.5	to 1107.1
M.P. 1084.9	to 1084.3	M.P. 1140.4	to 1141.0
M.P. 1058.3	to 1057.7	M.P. 1142.4	to 1143.0
M.P. 1055.7	to 1055.1	M.P. 1146.6	to 1147.2
M.P. 1041.7	to 1041.1	M.P. 1150.3	to 1150.9
M.P. 1040.4	to 1039.8		
M.P. 1014.5	to 1013.9		
M.P. 1004.8	to 1004.2		

# 8 SECOND AND FRESNO INTERURBAN DISTRICTS

# VALLEY DIVISION

### STATIONS OR TRACKS NOT SHOWN IN SCHEDULE

Location	Mile Posts	Capacity in Feet	Switch Connection
Trigo	1014.3	1874	East & West
Tuttle	1050.7	2339	East & West
Kadota	1052.1	1072	East & West
Cement Spur	1057.5	1.2 miles	East
Pritchard	1058.9	998	East
Winton	1065.4	1049	East & West
Hughson	1085.8	2047	East & West
Claus	1092.8	2228	East & West
Oakdale Spur	1095.6	6.5 miles	East
Burnham	1112.5	400	East
Rockwell	1114.8	903	East & West
Woodsbro	1125.0	4250	East & West
Werner	1138.8	1185	East & West
Du Pont	1147.6	3473	East & West
East Antioch	1149.2	6350	East & West
Zee	1149.7	3163	East & West
Monsanto	1165.8	2304	East & West
Muir	1170.6	2556	East
Bethlehem Steel	1184.5	1562	East & West
San Pablo	1187.8	584	East & West

### TRACK SIDE WARNING DEVICES SPECIAL RULE 7

Location	Type	Signals Affected
M.P. 1012.1	Dragging Equipment	Rotating white lights located at M.P. 1010.7
M.P. 1171.3	Slide Detector	11701 and 11722 and rotating red light M.P. 1171.5

### LENGTH OF STEMS OF WYES

Location	Feet
Calwa	Visalia District
Mormon	2610
Stockton	678
Richmond	Interharbor Lead

Normal position for junction switches:  
Hammond for Second District siding

### RAILROAD CROSSINGS AT GRADE

Location	Tracks Governed	Type
Calwa 1.6 West	S. P. Exeter branch.	TCS.
Oakdale	S. P. Oakdale branch.	98(B), 98(C).
Stockton Tower	W. P. and S. P. main tracks and transfer tracks.	Interlocking.
Orwood 0.8 East	Drawbridge and siding.	Interlocking.
Pittsburg 0.9 East	Lead to Columbia Steel over S. N.	98(B), 98(C) and Bulletin Instructions.
Pittsburg 0.2 West	Lead to Johns Manville over S. N.	98(B), 98(C) and Bulletin Instructions.
Pittsburg 0.9 West	Lead to P. G. & E. plant over S. N. main track.	Stop. Gate. Bulletin Instructions.

### FRESNO INTERURBAN DISTRICT

WESTWARD ↓	TIME TABLE NO. 11 April 29, 1984		Mile Post	Ruling Grade Descending Feet Per Mile	Capacity of Sidings in Feet	EASTWARD ↑
	Ruling Grade Descending Feet Per Mile	STATIONS				
		HAMMOND YL	0.0			
	0.0	2.0 CINCOTTA YL	2.0	0.0		
	0.0	0.4 BARTONETTE YL	2.4	0.0		
	0.0	2.6 CAMEO YL	6.0	0.0	1200	
	0.0	2.2 BURNESSE YL	7.2	0.0		
	0.0	5.8 FAIRVIEW YL	13.0	0.0	1200	
	10.6	1.2 BIG BUNCH YL	14.2	42.2		
	8.4	1.0 ZEDIKER YL	15.2	15.3		
	0.0	0.5 RIVERBEND YL	15.7	9.5		
	42.2	1.0 ELK YL	16.7	31.7		
	0.0	0.2 BELMONT AVE. YL	16.9	10.6		
		(16.9)				

Rule 93: Yard limits Hammond to Belmont Ave., inclusive.  
(Fresno Interurban District only.)

Normal position of junction switches:  
Hammond for Second District siding.  
Cameo for Southern Pacific Railroad.

### MAXIMUM AUTHORIZED SPEED FOR TRAINS

LOCATION	MPH
Hammond to Belmont Ave	10 MPH

Maximum speed permitted through turnout of other than main track switches  
10 MPH;

### STATIONS OR TRACKS NOT SHOWN IN SCHEDULE

Hammer Field Spur	4.9	1 Mile	East
-------------------	-----	--------	------



**VISALIA DISTRICT**

WESTWARD ↓	TIME TABLE NO. 11 April 29, 1984		Mile Post	Ruling Grade Descending Feet Per Mile	Communications Turn Tables and Wyes	Capacity of Sidings in Feet	EASTWARD ↑
	Ruling Grade Descending Feet Per Mile	STATIONS					
		CORCORAN YL	0.8		C-R-Y	Yard	
	0.0	14.7 S. P. Crossing TULARE YL	15.0	28.5			
	0.0	5.2 LOMA	20.2	13.9			
	0.0	5.0 VISALIA YL	25.2	5.3			
	16.2	8.1 S. P. Crossing	33.3	11.6		2338	
	0.0	2.9 CALGRO	36.2	11.6			
	15.9	2.3 CUTLER YL	38.5	10.8		3380	
	0.0	3.2 SULTANA	41.7	0.0			
	13.2	3.4 DINUBA	45.1	0.0			
	0.0	3.7 REEDLEY YL	48.8	9.3		Yard	
	0.0	2.2 LAC JAC	51.0	14.6			
	0.0	2.4 PARLIER	53.4	0.0			
	2.5	5.1 DEL REY	58.5	5.3		2651	
	7.9	3.4 CASTY	61.9	0.0		2246	
	8.5	2.5 LONE STAR	64.4	0.0		1626	
	10.6	4.5 CALWA YL	68.9	0.0	C-R T-Y	Yard	
		(68.6)					

**WAHTOKE DISTRICT**

WESTWARD ↓	TIME TABLE NO. 11 April 29, 1984		Mile Post	Ruling Grade Descending Feet Per Mile	Communications Turn Tables and Wyes	Capacity of Sidings in Feet	EASTWARD ↑
	Ruling Grade Descending Feet Per Mile	STATIONS					
	0.0	0.9 CELLA YL	6.2	0.0			
	41.4	5.3 WAHTOKE YL	5.3	33.2			
		REEDLEY YL	0.0			Yard	
		(6.2)					

Trains must get clearance card before leaving Calwa.

- Rule 93: Yard limits are located at:  
 Corcoran (Visalia District only)  
 Tulare  
 Visalia  
 Cutler  
 Reedley  
 Calwa (Visalia District only)  
 Wahtoke District

**MAXIMUM AUTHORIZED SPEED FOR TRAINS**

LOCATION	MPH
VISALIA DISTRICT	40
<b>SPEED RESTRICTIONS</b>	
Tulare M.P. 14.3 to 15.9	20
Visalia M.P. 24.5 to 26.0	15
Reedley M.P. 48.2 to 49.5	20
Parlier M.P. 53.1 to 53.6	24
Del Rey M.P. 58.4 to 58.8	24
WAHTOKE DISTRICT	20

Maximum speed permitted through turnout of other than main track switches 10 MPH; all main track turnouts and crossovers 15 MPH.

Normal position of junction switches:

- Corcoran for First District siding
- Cutler for Visalia District
- Reedley for Visalia District
- Reedley SP connection M.P. 49.5 for Visalia District
- Lac Jac SP connection M.P. 50.7 for Visalia District

Length of stems of wyes:

- Corcoran.....Visalia District
- Calwa.....Visalia District
- Reedley.....Wahtoke District

**STATIONS OR TRACKS NOT SHOWN IN SCHEDULE**

**VISALIA DISTRICT**

Location	Mile Posts	Capacity in Feet	Switch Connection
Higby	22.1	1000	East
Enson	43.9	270	East
Mattei Spur	65.2	2.2 miles	West

**RAILROAD CROSSINGS AT GRADE**

Location	Tracks Governed	Type
Tulare	S. P. main track.	Interlocking. Bulletin Instructions.
Visalia	S. P. Visalia branch.	98(B) and 98(C)
M.P. 33.3	S. P. Exeter branch.	98(B) and 98(C)

SUNSET RAILWAY

SPECIAL RULES

WESTWARD		TIME TABLE				EASTWARD	
Capacity of Blings In Feet	Rating Grade Descending Foot Per Mile	NO. 11		Mile Post	Rating Grade Descending Foot Per Mile		
		April 29, 1984					
		STATIONS					
		TAFT	YL	8.8			
		8.8					
1980	86.6	PENTLAND	YL	27.6	37.0		
		9.4					
		LEVEE	YL	18.1	0.0		
		3.7					
2343	10.6	MILLUX	YL	14.4	5.3		
		2.1					
		GULF	YL	12.8	0.0		
		2.7					
2316	5.3	CONNER	YL	9.6	0.0		
		2.6					
		LYLA	YL	7.0	13.2		
		7.0					
		GOSFORD	YL	0.0	10.6		
		11.5					
		KERN ICT.					
		2.5					
		BAKERSFIELD					
		(43.4)					

1. The Atchison, Topeka and Santa Fe Railway Company Rules, Operating Department, and current Valley Division Special Rules and Bulletins are applicable to the Sunset Railway Company.
2. Rule 93: Yard Limits are located Gosford to and including Taft.
3. Southern Pacific time table and rules govern movement of trains between Kern Junction and Gosford.

MAXIMUM AUTHORIZED SPEED FOR TRAINS

LOCATION	MPH
Gosford to M.P. 20	20 MPH
M.P. 20 to Pentland	15 MPH
Pentland to Taft	10 MPH

STATIONS OR TRACKS NOT SHOWN IN SCHEDULE

Name	Location	Capacity In Feet	Switch Connection
Del Kern	M.P. 5.4	500	West
Garintee	M.P. 6.0	1360	East-West

No switch lights on Sunset Railway.

SYMBOL FREIGHT TRAIN SCHEDULES  
VALLEY DIVISION

(for information only)

WESTWARD TRAINS										
	Barstow		Bakersfield		Calwa		Mormon		WP	Richmond
	Dept.	Arr.	Dept.	Arr.	Dept.	Arr.	Dept.	Arr.		Arr.
179	12:01A	5:00A	5:10A	7:10A	7:20A					12:01P
189	5:05P	9:15P	9:25P	11:10P	11:40P					4:00A
199	8:20A	12:05P	12:15P	2:00P	2:10P					6:00P
309	8:10P	12:30A	1:10A	3:10A	3:35A	6:20A	7:00A			9:00A
579	8:45A	12:45P	1:15P	3:15P	3:30P					9:15P
589	11:00P	3:30A	3:45A	5:45A	6:00A					10:45A
819	1:00P	6:00P	8:00P	10:00P	12:30A					4:30A
829	4:30P	9:30P	11:00P	1:00A	4:00A					11:30A
839	6:30P	11:30P	12:30A	3:00A	5:00A					10:00A
869	12:01P	5:00P	5:45P	7:45P	8:30P	11:15P		11:45P		
879	9:45P	1:45A	2:15A	4:00A	4:15A					9:00A
889	6:00A	10:00A	10:30A	12:20P	12:45P					6:30P
EASTWARD TRAINS										
	Richmond	WP	Mormon		Calwa		Bakersfield		Barstow	
	Dept.		Arr.	Dept.	Arr.	Dept.	Arr.	Dept.	Arr.	
901	5:00A		7:05A	7:20A	10:05A	10:30A	12:45P	3:00P	8:15P	
908	12:01A					7:30A		6:00P	11:59P	
928	12:01P			3:30P		7:30P		6:00A	11:59A	
948								12:01A	6:00A	
968	4:00P	2:45P		7:00P	10:35P	10:45P	1:30A	3:30A	9:00A	
971						1:45A	3:50A	4:50A	9:40A	
973	6:30A				12:15P	12:30P	3:30P	5:30P	11:45P	
975	2:00A		4:30A	5:30A	8:30A	9:30A	12:30P	2:30P	9:30P	
981	11:00P				3:00A	3:45A	5:50A	6:50A	11:40A	
991	5:00A				9:00A	9:10A	11:10A	11:20A	3:45P	

1. Rule 1: Standard clocks are located at on duty points Barstow, Bakersfield, Calwa, Mormon, Pittsburg, and Richmond.

Rule 3: Crews of Southern Pacific trains, having complied with their company's time regulations, may proceed over joint track.

2. Southern Pacific trains using joint track on Fresno Interurban District and between Ducor and Porterville Jct. and Sacramento Northern trains using joint track between Stockton Tower and Pittsburg will be governed by A.T.&S.F. time table and Rules, Operating Department.

3. Within TCS Limits, where maximum speed exceeds 30 MPH, a train or engine must not clear the main track through a hand-thrown switch, not electrically locked, for the purpose of meeting, passing or being passed by another train or engine.

Following is list of hand-thrown switches not electrically locked where maximum speed exceeds 20 MPH:

Hinkley . . . . .	MP 756.9 - MP 757.1	Hanford . . . . .	MP 967.5(2) - MP 968.1
Jim Grey . . . . .	MP 772.4 - MP 772.6		MP 968.3 - MP 966.1
Silt . . . . .	MP 789.7 - MP 789.8	Conejo . . . . .	MP 982.2
Bissell . . . . .	MP 803.6 - MP 803.7	Bowles . . . . .	MP 988.8
Sanborn . . . . .	MP 810.2 - MP 810.3	Gregg . . . . .	MP 1011.6
Jastro . . . . .	MP 890.7	Planada . . . . .	MP 1046.9 - MP 1047.4
Sandrini . . . . .	MP 924.1 - MP 924.2	Escalon . . . . .	MP 1101.2 - MP 1101.5
	MP 924.4		MP 1101.7
Corcoran . . . . .	MP 951.1 - MP 951.3	Mormon . . . . .	MP 1116.9
	MP 951.5 - MP 951.6		

4. Rule 80: Bulletin books are located at Barstow, Bakersfield, Calwa, Fresno, Mormon, Pittsburg, Richmond and San Francisco (China Basin).

5. Rule 125: All sidings having hand-thrown derails will have derail locked off rail, except when engines or cars are left unattended on siding.

6. Rule 759: Following is a list of structures:

Mile Post	Location	Description
746.5	Barstow viaduct over passenger yard tracks and house tracks 1 to 4, inclusive	Highway Bridge
888.5	Bridge 888.5	Highway Bridge
888.8	Bridge 888.75	Highway Bridge
1096.7	Bridge 1096.719	Truss Bridge
1166.4	Bridge 1166.47	S. P. Bridge
1166.5	Bridge 1166.48	Highway Bridge
1169.3	Bridge 1169.3	Highway Bridge
1170.2	Between Maltby and Muir	Tunnel No. 1
1171.0	Between Muir and Glen Frazer	Tunnel No. 2
1173.6	Between Glen Frazer and Christie	Tunnel No. 3
1183.1	Bridge 1183.1-A	Road Bridge
1190.5	Between Richmond and Ferry Point	Tunnel No. 5

7. Rule 105(A) Track side Warning Devices:

When rock slide indicated, trains must proceed at restricted speed until track at this location is known to be clear.

When trains stopped at signals in connection with high water indicator, bridge and track must be inspected before proceeding over bridge.

**SPEED REGULATIONS**

8. Freight trains averaging 90 tons or more per car or having more than 7000 tons, must not exceed 45 MPH.

9. Between Barstow and Mojave and between Bakersfield and Stockton, freight trains may observe passenger train speed but not to exceed 70 MPH, provided:

- (1) Maximum district speed is 55 MPH for freight trains.
- (2) Train does not contain empty cars (10-pack cars, cabooses, flatcars loaded with empty trailers, containers or container chassis are considered loads).
- (3) Train does not exceed 5500 tons.
- (4) Train does not exceed 90 cars.
- (5) Train does not average more than 80 tons per car.
- (6) Locomotive can control speed to 70 MPH without use of air brakes.

10. In freight service with dynamic brake\* NOT in use, maximum speed on descending grades as follows:

Percent	Feet Per Mile	
1.0 to 1.5	52.8 to 79.2	30 MPH
1.5 to 2.0	79.8 to 105.6	25 MPH
2.0 and over	105.6 and over	15 MPH

\*Applicable to freight trains in local service having locomotives not equipped with dynamic brakes, when average tons per car exceeds 80 tons per car.

11. Where street or highway crossings are shown, speed limit applies only while head end of train is passing.

12. Trains or engines using other than main track must not exceed turnout speed for that track, unless maximum speed otherwise indicated.

**13. MAXIMUM SPEED OF ENGINES**

Engines	Forward or dead in train MPH	When not controlled from leading unit MPH
AMTRAK 100-761, 764-799		
5940-5948, 5990-5998	90*	45
** 1215-1245, 1453, 1460	45	45
ALL OTHER CLASSES	70	45

Forward speed applies when lead unit of train is controlling and is in backing position.

EXCEPTION: When such unit is car body type, maximum authorized speed 45 MPH.

\*Engine without cars must not exceed 70 MPH.

\*When used as controlling unit must not exceed 20 MPH.

Speed limit 50 MPH for all trains having Amtrak 500, 600 or 700 class units in consist on all curves second district between Stockton and Port Chicago which are shown to be 50 MPH and above and on Curve MP 1162.8 to 1163.2.

14. Rule 108: Equipment listed below must not be moved through water above top of rail greater than the depths and not in excess of the speeds shown:

**MAXIMUM DEPTH OF WATER THROUGH WHICH ENGINES MAY BE OPERATED AND MAXIMUM SPEED IN SUCH OPERATION**

	Maximum depth above top of rail (inches)	Maximum speed (MPH)
All Classes, Except Amtrak	4	5
Amtrak	2	2

## 12 SPECIAL RULES

15. Derricks, cranes, pile drivers, spreaders and similar machinery moving on their own running gear must not be moved in trains except on authority of trainmaster, and train handling such equipment must not exceed speeds indicated below:

District	Wrecking Derricks MPH	Pile Drivers AT-199454 AT-199455 AT-199457 AT-199458 AT-199459 AT-199460 AT-199461 AT-199462 AT-199463 AT-199464	and Jordan Spreaders MPH	Pile Drivers AT-199452 AT-199453 AT-199456 Locomotive Crane AT-199720 and Other Machines MPH
Mojave, First, Second	40	45	30	
Oakland, Porterville-Orosi and Visalia	20	20	20	
All other Districts	15	15	15	

Derrick AT 199787, locomotive crane AT-199720 and pile drivers must be handled in trains next to engine.

Trains or engines handling wrecking derricks, cranes, pile drivers, Jordan spreaders, and similar machinery moving on their own running gear, through a turnout must not exceed one-half the maximum authorized speed for that turnout.

All foreign line scale test cars must be handled in trains immediately ahead of caboose at speed not exceeding 50 MPH.

### THE SANTA FE EMPLOYES COAST LINES HOSPITAL ASSOCIATION

DR. R. R. HARE, MEDICAL DIRECTOR-CHIEF EXECUTIVE OFFICER  
Los Angeles, Calif.

R. N. CROW, GENERAL WATCH INSPECTOR, Topeka, Kansas

For name and address of local surgeons and local watch inspector, refer to bulletin book.

## VALLEY DIVISION

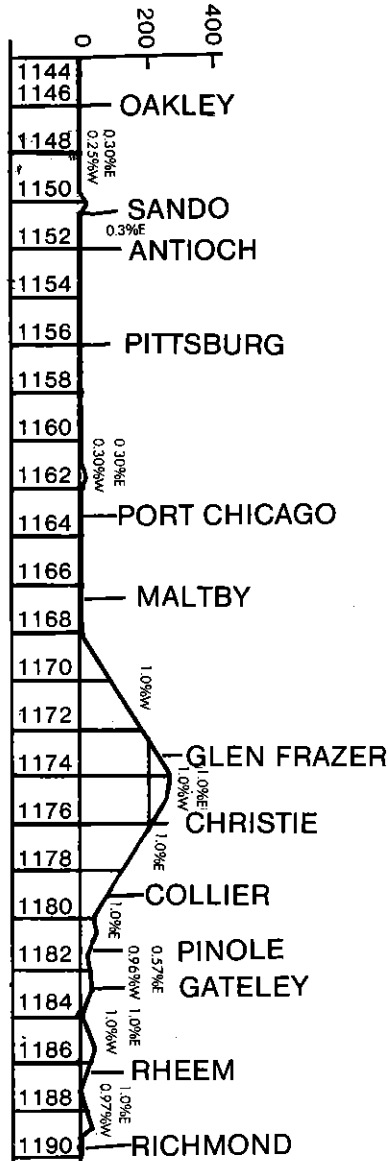
When helper engine is placed behind a caboose, not more than two six-axle operating units totaling not more than 179,400 pounds tractive effort or not more than two four-axle operating units totaling not more than 135,600 pounds tractive efforts, or a combination of one six-axle and one four-axle unit totaling not more than 157,600 pounds tractive effort will be used. Below is list showing the weight, tractive effort and horsepower rating of units by class:

CLASS	MAKE	TYPE	WEIGHT	TRACTIVE EFFORT	HORSE- POWER
*200	EMD	F40PH	259,500	38,240	3000
*500	EMD	SDP40F	396,000	57,300	3000
1215	EMD	SSB1200	246,000	36,000	1200
1242	ALCO	SW12	246,000	47,000	1200
1300	ALCO	CRSD20	380,000	69,800	2050
1310	EMD	GP7	249,000	41,300	1500
1450	EMD	SW	248,000	28,000	900
1460	EMD	SW7	262,500	41,300	1500
2000	EMD	GP7	249,000	41,300	1500
2244	EMD	GP9	249,000	45,200	1750
2417	EMD	CF7	249,000	41,300	1500
2700	EMD	GP30	262,900	51,400	2500
2800	EMD	GP35	266,000	51,400	2500
3000	EMD	GP20	265,000	44,800	2000
3200	EMD	GP30	262,900	50,064	2250
3300	EMD	GP35	266,000	43,850	2500
3500	EMD	GP38	262,500	46,720	2000
3600	EMD	GP39-2	264,400	55,400	2300
3800	EMD	GP40X	264,400	62,500	3500
3810	EMD	GP50	264,400	64,200	3500
4000	EMD	SD39	391,500	82,284	2300
4600	EMD	SD26	387,000	74,152	2625
5000	EMD	SD40	391,500	70,067	3000
5020	EMD	SD40-2	391,500	70,970	3000
5071	EMD	SD40-2	391,500	83,100	3000
5200	EMD	SD40-2	391,500	90,475	3000
5300	EMD	SD45	391,500	72,286	3600
5426	EMD	SD45	389,500	72,286	3500
5490	EMD	SD45	391,886	72,286	3600
5500	EMD	SD45	391,500	72,286	3600
5625	EMD	SD45-2	395,500	73,650	3600
5900	EMD	F45	395,000	72,290	3600
5940	EMD	FP45	399,000	68,006	3600
5950	EMD	SDF45	395,500	72,290	3600
5990	EMD	SDFP45	399,000	68,006	3600
6300	GE	U23B	262,500	60,400	2250
6350	GE	B23-7	268,000	61,000	2250
6364	GE	B23-7	265,000	60,400	2250
6390	GE	B23-7	264,000	61,000	2250
7484	GE	B36-7	264,000	64,600	3600
7500	GE	U23C	395,000	85,800	2250
8010	GE	C30-7	398,800	90,600	3000
8064	GE	C30-7	392,500	90,600	3000
8099	GE	C30-7	395,000	91,500	3000
8500	GE	U33C	391,500	90,600	3300
8700	GE	U36C	391,500	90,600	3600

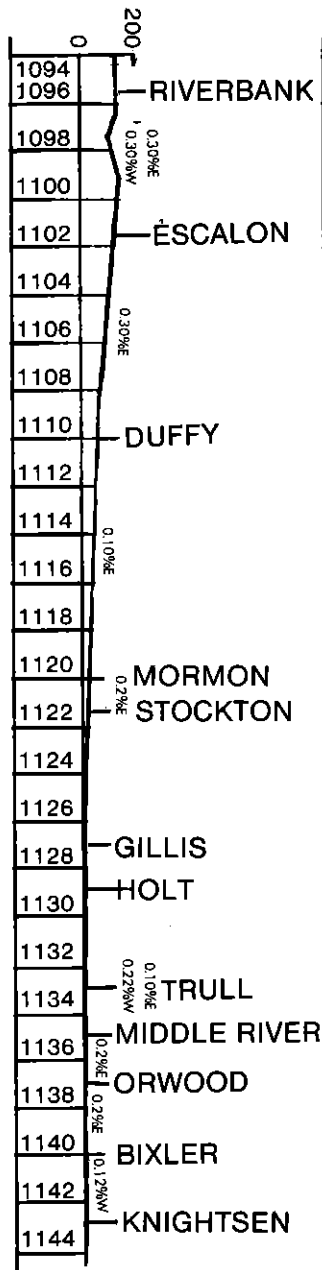
\* Amtrak passenger units.

SECOND DISTRICT

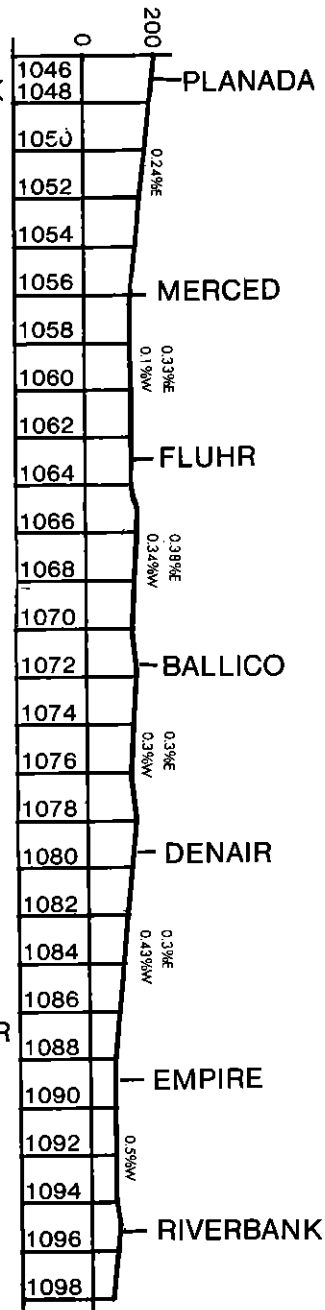
ELEVATION IN FEET



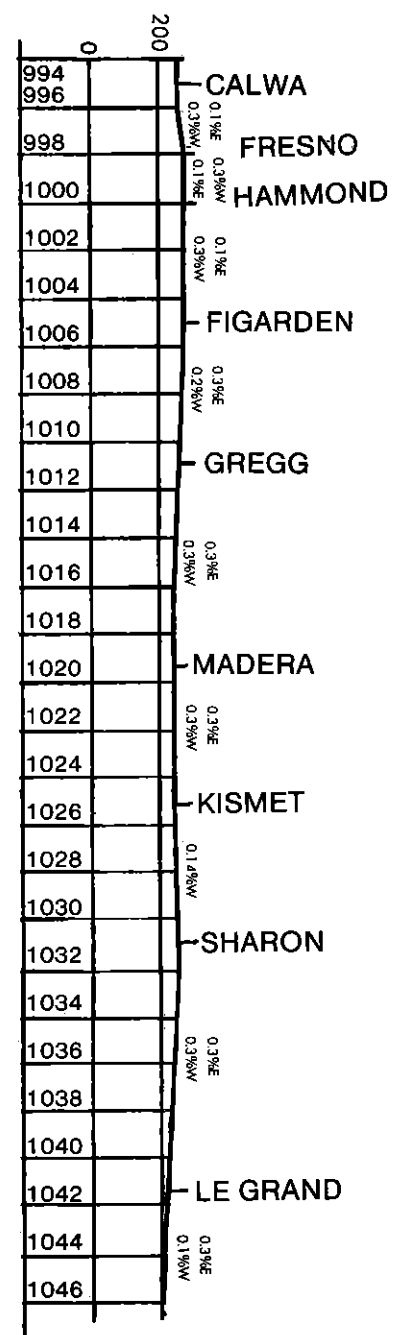
ELEVATION IN FEET



ELEVATION IN FEET



ELEVATION IN FEET



**FOR OBSERVATION AND GUIDANCE,  
THE FOLLOWING CODES MAY APPEAR ON WORK ORDERS,  
TRACK LISTS AND WHEEL REPORTS.**

AI	- Agri. Industries		MCNR	- Mechanical Car or Trailer - No Refrigeration Required	
B1	- Bad Order		NG	- Non-Flammable Gas	(HAZARDOUS)
BA	- Blasting Agent	(HAZARDOUS)	NP	- No Placards Required	
CG	- Cargill		OM	- Oxidizer	(HAZARDOUS)
CB	- Combustible	(HAZARDOUS)	OP	- Organic Peroxide	(HAZARDOUS)
CD	- Condemned		OR	- Other Regulated Materials	
CL	- Chlorine	(HAZARDOUS)	OX	- Oxygen	(HAZARDOUS)
CM	- Corrosive	(HAZARDOUS)	PA	- Poison Gas	(HAZARDOUS)
DG	- Dangerous		PB	- Poison	(HAZARDOUS)
DH	- Do Not Hump		PE	- Houston Public Elevator	
DU	- Do Not Uncouple		RE	- Rear End Only	
EQ	- Equity Export - Houston		RM	- Radioactive Material	(HAZARDOUS)
FG	- Flammable Gas	(HAZARDOUS)	REJT	- Car Rejected by Shipper	
FL	- Flammable	(HAZARDOUS)	RSPT	- Respot Due to Railroad Error	
FS	- Flammable Solid	(HAZARDOUS)	TURN	- Turn Car & Respot	
FW	- Flammable Solid W (Dangerous When Wet)	(HAZARDOUS)	WH	- Weight Heavy	
HE	- Head End Only		WI	- Waive Inspection - Set Direct	
HL	- High Wide Load		WL	- Weigh Light	
HV	- High Value		XA	- Explosive "A"	(HAZARDOUS)
IP	- Interchange Prohibited		XB	- Explosive "B"	(HAZARDOUS)
IPSW	- Intraplant Switch (Respot Car)		XX	- DO NOT MOVE THIS CAR	
MR	- Mechanical Refrig. Maintain - Degrees			*(Speed) - Speed Restriction	

\*Numeric Speed Restriction will be shown.

### HAZARDOUS MATERIAL

I. It is the conductor's responsibility to determine the identity and location of hazardous material shipments in the train. The conductor will communicate the information to members of the train and engine crew. Hazardous material shipments can be identified by checking.

**Waybill:** The train crew is required to have shipping paper (waybill) for hazardous material shipment in the train. A shipping paper is also required for certain empty tank cars last containing hazardous materials. Essential information included on the shipping paper is the proper shipping name, hazard class, quantity, identification number and -RQ- notation when applicable, and placards applied.

**Wheel Reports:** The train crew is required to have a wheel report, consist, switch list or other document indicating the position in the train of each loaded placarded car.

**Placards:** Certain cars, trailers, and containers loaded with hazardous materials are required to be placarded. Certain empty tank cars which last contained a hazardous material are required to be placarded.

**Commodity Codes:** The commodity code will be shown on the waybill and the wheel report. Commodity codes starting with "49" indicate a hazardous material.

II. In the event of an incident involving hazardous materials, your safety is the first consideration. The following will apply, IF IT IS SAFE TO DO SO:

A. Notify the Chief Dispatcher by the quickest means possible. If Railroad communications fail or are not available, call long distance to the telephone number listed below:

(209) 237-4994

B. Determine the location in the train of cars involved in the incident. Approach from the upwind (wind at your back) side and go no nearer than absolutely necessary to assess the condition of the cars. Use your eyes, ears and nose to detect any vapor or gas clouds, fire, smoke, unusual smells or noises, leaking material, etc. If any are present, **DO NOT GO NEAR THE CARS.** Smoking is prohibited in the vicinity of a hazardous material incident.

C. Assist injured. Call for medical assistance if needed.

D. The Chief dispatcher will be furnished as much of the following information as possible.

- (1) Train identification, symbol, employe name and position.
- (2) Specific location of the incident (station, milepost location, nearest street or highway crossing).
- (3) Nature of the incident - number of cars involved, if upright or turned over, if ruptured or leaking, on fire or near fire, vapor or gas cloud, unusual odor or noise, etc.
- (4) Waybill Information:
  - (a) Car number
  - (b) Proper shipping name of contents
  - (c) Hazard class of material
  - (d) Shipper and consignee
  - (e) Standard Transportation Commodity Code (49 Series Number)
- (5) Weather conditions (wind direction and intensity, temperature, if raining, snowing, foggy, etc.).
- (6) Location of roads, buildings, people or property subject to harm or damage from the emergency.
- (7) Location of access roads.
- (8) Location of nearby streams, rivers, ponds, lakes or other bodies of water.
- (9) Any other information that will help the dispatcher understand the situation.

E. Warn people to stay away from the emergency area.

F. Contact emergency response personnel upon their arrival (police, sheriff, fire department, etc.) and provide the person in charge with information off shipping paper. **DO NO SURRENDER DOCUMENTS TO ANYONE OTHER THAN AUTHORIZED RAILROAD PERSONNEL.**

G. Remain at the scene at a safe distance until relieved by a railroad Operating Department officer.

**HOW TO USE THIS CHART:**  
 To determine where a placarded car can be placed in a train follow these steps:  
 - Determine the type of placard that is applied to the car from Line 1.  
 - Determine the type of car to which the placard is applied from Line 2.  
 - Follow vertically down the chart and note which lines apply.  
 - The symbol " " indicates wording at the side that applies.  
 See footnotes for explanation.

**POSITION IN TRAIN OF PLACARDED CARS CONTAINING HAZARDOUS MATERIALS**

PLACARD APPLIED ON CAR		TYPE OF CAR							
		ANY CARS (See notes for exceptions)	TANK CAR	OTHER THAN TANK CAR	ANY CAR	TANK CAR	OTHER THAN TANK CAR	TANK CAR	TANK CAR
RESTRICTIONS		PLACARD							
		EXPLOSIVES-A	POISON GAS	POISON GAS	RADIOACTIVE	ANY PLACARDED LOAD OTHER THAN COMBUSTIBLE OR POISON GAS	OTHER THAN PLACARDED EXPLOSIVES-A, POISON GAS OR COMBUSTIBLE	PLACARDED EMPTY EXCEPT COMBUSTIBLE	COMBUSTIBLE
3									
4	WHEN TRAIN LENGTH PERMITS MUST NOT BE NEARER THAN 6th FROM ENGINE OCCUPIED CABOOSE OR PASSENGER CAR	✓	✓			✓			
5	WHEN TRAIN LENGTH DOES NOT PERMIT MUST BE NEAR MIDDLE OF TRAIN BUT NOT NEARER THAN 2ND FROM ENGINE, OCCUPIED CABOOSE.	✓	✓			✓			
6	LOADED FLAT CAR A FLATCAR EQUIPPED WITH PERMANENTLY ATTACHED ENDS OF RIGID CONSTRUCTION IS CONSIDERED TO BE AN OPEN-TOP CAR	✓ <sup>1</sup>	✓	✓		✓ <sup>2</sup>			
7	AN OPEN-TOP CAR WHEN ANY OF THE LADING PROTRUDES BEYOND THE CAR ENDS OR WHEN ANY OF THE LADING EXTENDING ABOVE THE CAR ENDS IS LIABLE TO SHIFT SO AS TO PROTRUDE BEYOND THE CAR ENDS	✓	✓	✓		✓			
8	ENGINE	✓	✓	✓	✓	✓			✓
9	EXCEPT AS PROVIDED IN LINES 10 AND 11, A CAR OCCUPIED BY ANY PERSON OR A PASSENGER CAR OR COMBINATION CAR THAT MAY BE OCCUPIED.	✓ <sup>3</sup>	✓ <sup>3</sup>	✓ <sup>3</sup>	✓	✓	✓ <sup>4</sup>	✓	
10	OCCUPIED CABOOSE	✓ <sup>3</sup>	✓ <sup>3</sup>	✓ <sup>3</sup>	✓	✓		✓	
11	OCCUPIED GUARD CAR	✓ <sup>3</sup>	✓ <sup>3</sup>	✓ <sup>3</sup>		✓			
12	UNDEVELOPED FILM				✓				
13	A CAR WITH AUTOMATIC REFRIGERATION OR HEATING APPARATUS IN OPERATION. OR A CAR WITH OPEN-FLAME APPARATUS IN SERVICE OR WITH AN INTERNAL COMBUSTION ENGINE IN OPERATION.	✓	✓	✓		✓			
14	A CAR CONTAINING LIGHTED HEATERS, STOVES, OR LANTERNS.	✓	✓	✓					
15	CAR PLACARDED	EXPLOSIVES A		✓	✓	✓	✓	✓	
16		POISON GAS	✓			✓	✓	✓	
17		LOADED PLACARDED CAR, OTHER THAN A CAR PLACARDED WITH THE SAME PLACARD OR THE "COMBUSTIBLE" PLACARD.	✓	✓	✓	✓			
18		RADIOACTIVE	✓	✓	✓		✓	✓	

MUST NOT BE PLACARDED NEXT TO

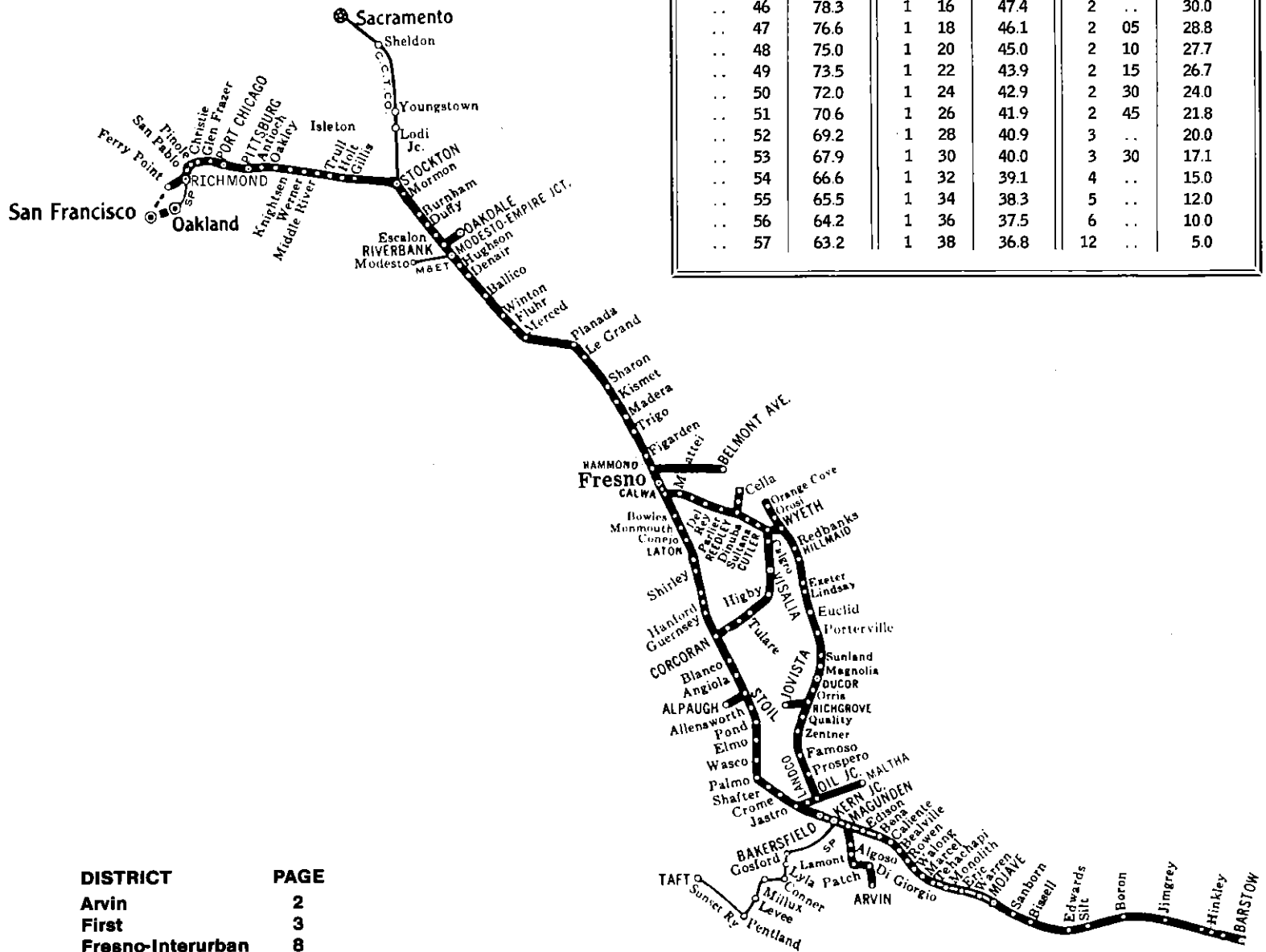
**FOOTNOTES:**  
 1- Loaded cars placarded "EXPLOSIVES A" may be placed next to each other.  
 2- A specially equipped car in trailer-on-flatcar or container-on-flatcar service or a flatcar loaded with vehicles secured by means of a device designed for that purpose and permanently installed on the flatcar, and of a type generally accepted for handling in interchange between railroads may be placed next to these placarded loaded tank cars subject to the following: this exception for cars in trailer-on-flatcar service does not apply to loaded trucks or trailers without securely closed doors.  
 3- A rail car placarded "EXPLOSIVES A" OR "POISON GAS" in a moving or standing train must be next to and ahead of any car occupied by the guards or technical escorts accompanying this car. However, if a car occupied by guards or technical escorts is equipped with a lighted heater or stove, it must be the fourth car behind any car requiring "EXPLOSIVES A" placards.  
 4- Applies only in mixed train service, see section 174.87.

## AVOID DAMAGE—SWITCH CUSTOMERS' CARS CAREFULLY

Damage to freight or car can be avoided by always keeping coupling speed within the safe range—NOT OVER 4 MILES PER HOUR—A BRISK WALK.

Handle freight carefully and keep our customers.

IT'S EVERYBODY'S JOB ON THE SANTA FE!



SPEED TABLE—FOR INFORMATION ONLY

Time Per Mile Min. Sec.	Miles Per Hour	Time Per Mile Min. Sec.	Miles Per Hour	Time Per Mile Min. Sec.	Miles Per Hour
.. 36	100	.. 58	62.1	1 40	36.0
.. 37	97.3	.. 59	61.0	1 42	35.3
.. 38	94.7	1 ..	60.0	1 44	34.6
.. 39	92.3	1 02	58.0	1 46	34.0
.. 40	90.0	1 04	56.2	1 48	33.3
.. 41	87.8	1 06	54.5	1 50	32.7
.. 42	85.7	1 08	52.9	1 52	32.1
.. 43	83.7	1 10	51.4	1 54	31.6
.. 44	81.8	1 12	50.0	1 56	31.0
.. 45	80.0	1 14	48.6	1 58	30.5
.. 46	78.3	1 16	47.4	2 ..	30.0
.. 47	76.6	1 18	46.1	2 05	28.8
.. 48	75.0	1 20	45.0	2 10	27.7
.. 49	73.5	1 22	43.9	2 15	26.7
.. 50	72.0	1 24	42.9	2 30	24.0
.. 51	70.6	1 26	41.9	2 45	21.8
.. 52	69.2	1 28	40.9	3 ..	20.0
.. 53	67.9	1 30	40.0	3 30	17.1
.. 54	66.6	1 32	39.1	4 ..	15.0
.. 55	65.5	1 34	38.3	5 ..	12.0
.. 56	64.2	1 36	37.5	6 ..	10.0
.. 57	63.2	1 38	36.8	12 ..	5.0

DISTRICT	PAGE
Arvin	2
First	3
Fresno-Interurban	8
Mojave	2
Oil City	5
Porterville-Orosi	5
Second	6
Sunset Railway	10
Visalia	9
Wahtoke	9

## VALLEY DIVISION