



K  
A  
T  
T  
I  
C



The lists which are produced by this system will be coded as follows.

Train	101	will	show	-	1
"	153	"	"	-	3
"	475	"	"	-	5
"	106	"	"	-	6

Transfers	from	the	ATSF	show	-	A
"	"	"	FWD	"	-	F
"	"	"	L&A	"	-	L
"	"	"	SP	"	-	P
"	"	"	RI	"	-	R
"	"	"	SLSF	"	-	S
"	"	"	TP	"	-	T
"	"	"	SSW	"	-	W

The Dallas area is broken into ZONES as follows.

- Zone 1 - Garland area
- Zone 2 - South Dallas
- Zone 3 - Up Town
- Zone 4 - Brookhollow
- Zone 5 - North Dallas & K-29
- Zone 6 - Long North
- Zone 7 - Hudnall & Airlawn

TRINITY PLYWOOD COMPANY	101
KRAFT FOODS CO OVERMEYER WHSE	102
ECONOMICS LAB INC	103
SHERWIN WILLIAMS COMPANY	104
ST REGIS CONTR COMPANY	105
QUEMETCO	106
GLOBE UNION INC	107
DESOTO CHEMICAL COATINGS INC	108
WEYERHAUSER COMPANY	109
CONTINENTAL BLDRS SUPPLY	110
CONTINENTAL EMSCO	111
OIL WELL SUPPLY COMPANY	112
WARD DRUG	113
CAMERSON WM	114
SUTHERLAND LUMBER TEXAS INC	115
ARMSTRONG	116
FRY WHLSE LUMBER COMPANY	117
EMORY V E	118
JACKSON DISTR CO	119
SOUTHERN MAID DONUT COMPANY	120
SAGEBRUSH SALES	121
B AND J LUMBER COMPANY	122
DODSON OIL COMPANY	123
PIGGYBACK RAMP	124
SAFEWAY STORES PREPACK	125
SAFEWAY STORES FROZEN FOOD	126
SAFEWAY STORES GROC	127
SAFEWAY STORES NON FOODS	128
SAFEWAY STORES BEVERAGE	129
KRAFT FOODS	130
SAFEWAY STORES INC ICE CREAM	131
SLAUGHTER	132
E SYSTEMS INC	134
GARLAND CITY OF	136
HOLLYWOOD OVERHEAD DOOR	138
SAFEWAY STORES PRODUCE PREPACK	140
TRI CITY LUMBER COMPANY	142
MORRIS MFG CO	144
SHILOH TEAM TRACK	150
OAKLAND TEAM TRACK	160
D 90 TEAM TRACK	170
CONTINENTAL STEEL COMPANY	172
DALLAS CITY OF SERVICE CENTER	175

CPC INTERNATIONAL BEST FOODS	201
DIAMOND SHAMROCK COMPANY	204
PROCTER AND GAMBLE MAIN PLANT	207
PROCTER AND GAMBLE RIVER WHSE	210
PENN TEAM TRACK	214
DRESSER INDUSTRIES	217
LINDE AIR PRODUCTS COMPANY	219
NATIONAL LEAD COMPANY	220
LONE STAR RENDERING	224
DALLAS CITY WATER DEPT SANITARY	230
TEXAS CARTAGE WHSE	235
SOUTHWEST TABLET	240
PROCTER AND GAMBLE DIEST WHSE	245
POLLOCK PAPER COMPANY KEIST	250
DIXIE LEAD COMPANY	255

WELL MADE NOVELTY CO	301
PURSE AND COMPANY	303
HIGGINBOTHAM PEARLSTONE HDWE	304
MAGAZINE CARTAGE	308
HOME FURN CO	310
ELECTRICAL SUPPLY CORP	311
SUMMIT SALES	314
DALLAS BAG AND BURLAP NO 1	315
DALLAS BAG AND BURLAP NO 2	316
ALFORD REFRIGERATED WHSE	318
ROACH PAINT COMPANY BROOM ST	321
ROACH PAINT COMPANY RIVER ST	322
ACME PAPER STOCK COMPANY	326
GREAT A AND P TEA COMPANY	329
BURRUS BULGAR PLANT	331
INLAND SALES COMPANY	332
BURRIS ELEVATOR	333
AMERICAN PAPER STOCK COMPANY	336
DAL TEX WASTE	339
DALLAS PR & LT MAIN PLANT #1	340
NEUHOFF BROTHERS	344
DORSEY COMPANY	347
ARMO TEAM TRACK	350
BAIRDS MRS BREAD COMPANY	355
WESTERN ELECTRIC COMPANY	358
LONESTAR GAS WHSE	360
DR PEPPER COMPANY	363
LACLEDE STEEL COMPANY	366
DALLAS PR & LT SERVICE # 2	368
ATKINS TEAM TRACK	370

FIRESTONE 9216 HARRY HINES	401
WARLICK PRESS	402
LEE TIRE AND RUBBER	403
MULLER BRASS COMPANY	404
M T C CORP	405
SUNCRAFT OF CALIFORNIA	406
SOUTHWEST SCHOOL BOOK DEPOSIT	407
ROOSEVELT PAPER COMPANY	408
PENNSYLVANIA TIRE COMPANY	409
LIBERTY ENV BOISE CASCADE # 1	410
LIBERTY ENV BOISE CASCADE # 2	411
SILLIMAN AND ASSOCIATES	413
NATIONAL CYLINDER GAS	414
ARTES DE MEXICO	415
FRITO LAY RESEARCH PLANT	416
SQUARE D COMPANY	417
REYNOLDS ALUMINUM SUPPLY	418
CARRIER BOCK COMPANY	419
JOHNSON WAX S C AND SONS	420
UNITED DISTRIBUTORS	422
NATIONAL GYPSUM COMPANY	423
NATIONAL BLANK BOOK	424
WESTINGHOUSE ELECTRIC CORP	425
THORPE PRODUCTS	426
JOHNS MANVILLE SALES CORP	427
JET AIR PRODUCTS	428
GUARANTEED FOODS OF DALLAS	429
AMERICAN OLEAN TILE COMPANY	430
MORSE ELECTRO	432
APOLLO PAPER	433
LONESTAR CONTAINER COMPANY	434
RHEEM MANUFACTURING	435
SOUTHLAND DISTR COMPANY	436
STANDARD PACKAGING	437
JOHNSTON LEON SUPPLY COMPANY	438
ALCAN CORP	439
ARDINGER AND SON H T NO 1	440
ARDINGER ANJ SON H T NO 2	441
GENERAL MTRS CORP 8635 STEMMONS	442
USCO SERVICES INC NO 1	443
UNIROYAL	444
METRO WHSE	445
BRASS CRAFT WESTERN	446
MAXWELL PAPER	447
CLAMPITT PAPER CO	448
G P PLASTICS CORP	449
WELCO MFG CO OF TEXAS	450
AFFILIATED FOODS STORES	451
SOUTHERN TELEPHONE SUPPLY	452
MCKINNEY RW AND ASSOC	453
HOOKER WM H COMPANY	454
COTTER AND COMPANY	455
TEXAS SCHOOL BOOK DEPOSITORY	456
CREAMERY PACKAGE MFG	457
TRANSCHINA FF COMPANY	458
WRIGHT WATER PROOFING CO	459
ENTERPRISE INC	460

GOODYEAR T/R 7301 AMBASSADOR ROW	461
SANGER HARRIS COMPANY NO 1	462
MAGNAVOX COMPANY	464
RCA TUBE DIVISION	465
T AND W DISTRIBUTING COMPANY	466
VANCO DISTR	467
TOP VALUE ENTERPRISES	468
LEVINES	469
GENERAL ELEC CO 8901 EMPIRE	470
SOUTHWEST GLOBE TICKET	472
HOT POINT MAJOR APPLIANCES	473
ZEP MANUFACTURING COMPANY	474
DUPONT EI	475
GENERAL ELEC CO 8401 EMPIRE	476
GENERAL ELEC CO 8400 AMBASSADOR	477
SOUTHWESTERN DRUG COMPANY	478
MCCLURE E H	479
HLH PRODS	480
USCO SERVICES INC NO 2	481
USCO SERVICES INC NO 3	482
ABBOTT LABS	483
AMERICAN MOTORS	484
PARKE DAVIS AND COMPANY	485
AMERICAN CYANMID CORP	486
SANGER HARRIS COMPANY NO 3	487
COATS AND CLARK SALES	490
SMITH ALEXANDER CO INC	491

BROOKHOLLOW TEAM TRACK	500
SIMMONS COMPANY MAIN PLANT	502
E S B COMPANY	503
UNITED STATES PLYWOOD CORP	504
MONEY TEAM TRACK	506
SPEAS COMPANY	508
CONTINENTAL BAKING COMPANY	510
ROUNDS AND PORTER COMPANY	512
DACOL PAINT COMPANY	514
REDWOOD DISTRIBUTORS	515
DALLAS CITY OF WATER WORKS	517
DALLAS CITY OF STREET DEPT	518
DALLAS CITY OF SERVICE CENTER	519
BOCKMAN TEAM TRACK	520
RICHARDSON LBR	524
MOSER TEAM TRACK	525
ARENCO INC	526
CULLUM AND BOREN COMPANY	528
PUREX CORP NO 1	530
TEXAS DISTRIBUTORS INC	533
LIBERTY STEEL COMPANY	535
BARNES LUMBER COMPANY	538
SLAUGHTER INDS INC	540
GENERAL FELT IND	542
TITCHES WAREHOUSE	544
DEERE JOHN PLOW COMPANY	546
U S ENVELOPE CO 10700 HINES	548
K 29 / OLDEM TEAM TRACK	550
GENERAL MOTORS CORP HARRY HINES	553
JULIAS SCHEPPS	556
SOUTHWEST MOULDING COMPANY	558
PENNEY J C WHSE	560
SIGELS LIQUOR SALES	562
VINSON SUPPLY CO	566
GOLD STAR DISTR	568
LIQUID STORAGE	570



PEERLESS MFG	601
PUREX NO 2	603
TEXAS LABS	605
LANE CONTAINER CORP	607
BOISE CASCADE CORP NO 1	609
LONE STAR SASH AND DOOR	611
DALLAS HEATING AND AIR COND	622
SUNNY JIM	624
ELLINOR CORP	626
ZELRICH COMPANY INC	628
PRIMROSE OIL	630
MAGNOLIA CHEMICAL COMPANY	632
ACCOUSTICS BY BOGGS	634
CENTRAL LUMBER COMPANY	636
BRICK DISTR	638
TEXAS INSTRUMENTS	640
SMITH A O CORP	642
MANING WAREHOUSE	644
PARKER FALLIS INSUL NO 2	645
UNIVERSITY COMPUTING CORP	646
EASTMAN KODAK	648
MAYFLOWER WAREHOUSE	650
DUCOMMON IRON	652
LOVE FIELD RAMP	654
NU METALS	656
TEXAS LITEWEIGHT CONCRETE	658
K 25 / FARMERS BRANCH TEAM TRACK	660
TEXAS TEXTURE PAINT	662
CHURCH AND CLARKE	664
SUPERIOR PRODUCTS	666
TRUETT LABS	668
THOMPSON CAN	670
GENERAL PACKAGING CORP	672
WALLBOARD COATINGS	674
CARTER GLENN	676
SIMMONS CO WHSE NO 2	678

BINYON OKEEFE STORAGE COMPANY	701
BINSWANGER AND COMPANY	703
CASE J I COMPANY	705
WYCHE AND COMPANY	707
SUPREME EQUIPMENT # 1	708
SUPREME EQUIPMENT # 2	709
GENERAL BATTERY	710
BETTER MONKEY GRIP COMPANY	711
INTERNATIONAL METALS	712
STANDARD BRANDS	713
CANADA DRY CORP	714
STEWART OFFICE SUPPLY	715
RATH PACKING	716
MOSHER STEEL COMPANY	718
BRIGGS WEAVER NO 1	720
BRIGGS WEAVER NO 2	721
POCO BAKERY	722
LOFLAND COMPANY	724
ACCO FEEDS	726
CENTRAL LUMBER NO 2	727
NORTH TEXAS DRYWALL	729
OLMSTEAD KIRK COMPANY # 1	733
CONTROL BUILDING SYSTEM	735
HUDNALL TEAM TRACK	740
WEST CHEMICAL COMPANY	742
VALVOLINE OIL COMPANY	744
G & W PRINTING COMPANY	745
OLMSTEAD KIRK COMPANY # 2	746
MCKEE RE COMPANY	748
LOVE FIELD OFFICE AND WHSE	750
MORTON FOODS, INC.	753
SUPER CITY DEPT STORE	755
AUTHORIZED ENGINE REBUILDERS	756
WINTHROP LABS	757
GREENFIELDS OFFICE SUPPLY	760
WATSON FOOD SERVICE	761
STORM PRINTING COMPANY	763
TEXAS INSTRUMENT	764
PETER PAUL INC	765
METAL GOODS CORP	766
SINGER SEWING MACHINE CO	767
UNITED MOTERS	769
DALLAS LAMP WHSE GE	770
TEXLITE INC	771
COCA COLA COMPANY SUGAR	772
MANOR BAKING COMPANY	773
RAINBO DONUT	774
VICKERY AND COMAPNY	775
STEWART COMPANY	776
COCA COLA BOTTLING COMPANY	777
FIRESTONE WHSE	778
EASTMAN KODAK CEDAR SPRINGS # 2	779
ONE SOURCE JOBBERS SUPPLY	780
AMERICAN THREAD	781
GENERAL ELECTRIC SHOPS	782
MASSEY FERGUSON COMPANY	783
BIG TEXAS WHSE GROCERS	784

GMC TRUCK	785
HAWES TEAM TRACK	788
KROEHLER MFG COMPANY	789
CULLUM, AW NO PERISHABLES	790
JONES BLAIR PAINT AND VARNISH	791

ABBOTT LABS	483
-ACCO FEEDS	726
ACCOUSTICS BY BOGGS	634
•ACME PAPER STOCK COMPANY	326
AFFILIATED FOODS STORES	451
ALCAN CORP	439
•ALFORD REFRIGERATED WHSE	318
AMERICAN CYANMID CORP	486
AMERICAN MOTORS	484
AMERICAN OLEAN TILE COMPANY	430
•AMERICAN PAPER STOCK COMPANY	336
AMERICAN THREAD	781
APOLLO PAPER	433
ARDINGER AND SON H T NO 1	440
ARDINGER AND SON H T NO 2	441
ARENCO INC	526
ARMO TEAM TRACK	350
-ARMSTRONG	116
ARTES DE MEXICO	415
ATKINS TEAM TRACK	370
AUTHORIZED ENGINE REBUILDERS	756
B AND J LUMBER COMPANY	122
-BAIRDS MRS BREAD COMPANY	355
BARNS LUMBER COMPANY	538
BETTER MONKEY GRIP COMPANY	711
BIG TEXAS WHSE GROCERS	784
-BINSWANGER AND COMPANY	703
-BINYON OKEEFE STORAGE COMPANY	701
BOCKMAN TEAM TRACK	520
BOISE CASCADE CORP NO 1	609
BRASS CRAFT WESTERN	446
BRICK DISTR	638
BRIGGS WEAVER NO 1	720
BRIGGS WEAVER NO 2	721
BROOKHOLLOW TEAM TRACK	500
•BURRIS ELEVATOR	333
•BURRUS BULGAR PLANT	331
•CAMERSON WM	114
CANADA DRY CORP	714
CARRIER BOCK COMPANY	419
CARTER GLENN	676
CASE J I COMPANY	705
CENTRAL LUMBER COMPANY	636
CENTRAL LUMBER NO 2	727
CHURCH AND CLARKE	664
CLAMPITT PAPER CO	448
COATS AND CLARK SALES	490
COCA COLA BOTTLING COMPANY	777
COCA COLA COMPANY SUGAR	772
CONTINENTAL BAKING COMPANY	510
CONTINENTAL BLDRS SUPPLY	110
CONTINENTAL EMSCO	111
•CONTINENTAL STEEL COMPANY	172
CONTROL BUILDING SYSTEM	735
COTTER AND COMPANY	455
•CPC INTERNATIONAL BEST FOODS	201
CREAMERY PACKAGE MFG	457

CULLUM, AW NO PERISHABLES	790
CULLUM AND BOREN COMPANY	528
D 90 TEAM TRACK	170
DACOL PAINT COMPANY	514
DAL TEX WASTE	339
DALLAS BAG AND BURLAP NO 1	315
DALLAS BAG AND BURLAP NO 2	316
DALLAS CITY OF SERVICE CENTER	175
DALLAS CITY OF SERVICE CENTER	519
DALLAS CITY OF STREET DEPT	518
DALLAS CITY OF WATER WOERKS	517
DALLAS CITY WATER DEPT SANITARY	230
DALLAS HEATING AND AIR COND	622
DALLAS LAMP WHSE GE	770
-DALLAS PR & LT MAIN PLANT #1	340
-DALLAS PR & LT SERVICE # 2	368
DEERE JOHN PLOW COMPANY	546
-DESOTO CHEMICAL COATINGS INC	108
-DIAMOND SHAMROCK COMPANY	204
-DIXIE LEAD COMPANY	255
DODSON OIL COMPANY	123
-DORSEY COMPANY	347
-DR PEPPER COMPANY	363
-DRESSER INDUSTRIES	217
DUCOMMON IRON	652
DUPONT EI	475
E S B COMPANY	503
-E SYSTEMS INC	134
EASTMAN KODAK	648
EASTMAN KODAK CEDAR SPRINGS # 2	779
-ECONOMICS LAB INC	103
-ELECTRICAL SUPPLY CORP	311
ELLINOR CORP	626
EMORY V E	118
ENTERPRISE INC	460
FIRESTONE 9216 HARRY HINES	401
FIRESTONE WHSE	778
FRITO LAY RESEARCH PLANT	416
-FRY WHLSE LUMBER COMPANY	117
-G & W PRINTING COMPANY	745
G P PLASTICS CORP	449
GARLAND CITY OF	136
GENERAL BATTERY	710
GENERAL ELEC CO 8901 EMPIRE	470
GENERAL ELEC CO 8401 EMPIRE	476
GENERAL ELEC CO 8400 AMBASSADOR	477
GENERAL ELECTRIC SHOPS	782
GENERAL FELT IND	542
GENERAL MOTORS CCRP HARRY HINES	553
GENERAL MTRS CORP 8635 STEMMONS	442
GENERAL PACKAGING CORP	672
-GLOBE UNION INC	107
GMC TRUCK	785
GOLD STAR DISTR	568
GOODYEAR T/R 7301 AMBASSADOR ROW	461
-GREAT A AND P TEA COMPANY	329
GREENFIELDS OFFICE SUPPLY	760

GUARANTEED FOODS OF DALLAS	429
HAWES TEAM TRACK	788
HIGGINBOTHAM PEARLSTONE HDWE	304
HLH PRODS	480
HOLLYWOOD OVERHEAD DOOR	138
HOME FURN CO	310
HOOKER WM H COMPANY	454
HOT POINT MAJOR APPLIANCES	473
HUDNALL TEAM TRACK	740
INLAND SALES COMPANY	332
INTERNATIONAL METALS	712
-JACKSON DISTR CO	119
JET AIR PRODUCTS	428
JOHNS MANVILLE SALES CORP	427
JOHNSON WAX S C AND SONS	420
JOHNSTON LEON SUPPLY COMPANY	438
JONES BLAIR PAINT AND VARNISH	791
JULIAS SCHEPPS	556
K 25 / FARMERS BRANCH TEAM TRACK	660
K 29 / OLDEM TEAM TRACK	550
-KRAFT FOODS	130
-KRAFT FOODS CO OVERMEYER WHSE	102
KROEHLER MFG COMPANY	789
-LACLEDE STEEL COMPANY	366
LANE CONTAINER CORP	607
LEE TIRE AND RUBBER	403
LEVINES	469
LIBERTY ENV BOISE CASCADE # 1	410
LIBERTY ENV BOISE CASCADE # 2	411
LIBERTY STEEL COMPANY	535
-LINDE AIR PRODUCTS COMPANY	219
LIQUID STORAGE	570
-LOFLAND COMPANY	724
LONE STAR RENDERING	224
LONE STAR SASH AND DOOR	611
LONESTAR CONTAINER COMPANY	434
-LONESTAR GAS WHSE	360
LOVE FIELD OFFICE AND WHSE	750
LOVE FIELD RAMP	654
M T C CORP	405
-MAGAZINE CARTAGE	308
MAGNOLIA CHEMICAL COMPANY	632
MAGNAVOX COMPANY	464
MANING WAREHOUSE	644
MANOR BAKING COMPANY	773
MASSEY FERGUSON COMPANY	783
MAXWELL PAPER	447
MAYFLOWER WAREHOUSE	650
MCCLURE E H	479
MCKEE RE COMPANY	748
MCKINNEY RW AND ASSOC	453
METAL GOODS CORP	766
METRO WHSE	445
MONEY TEAM TRACK	506
MORRIS MFG CO	144
MORSE ELECTRC	432
MORTON FOODS, INC.	753

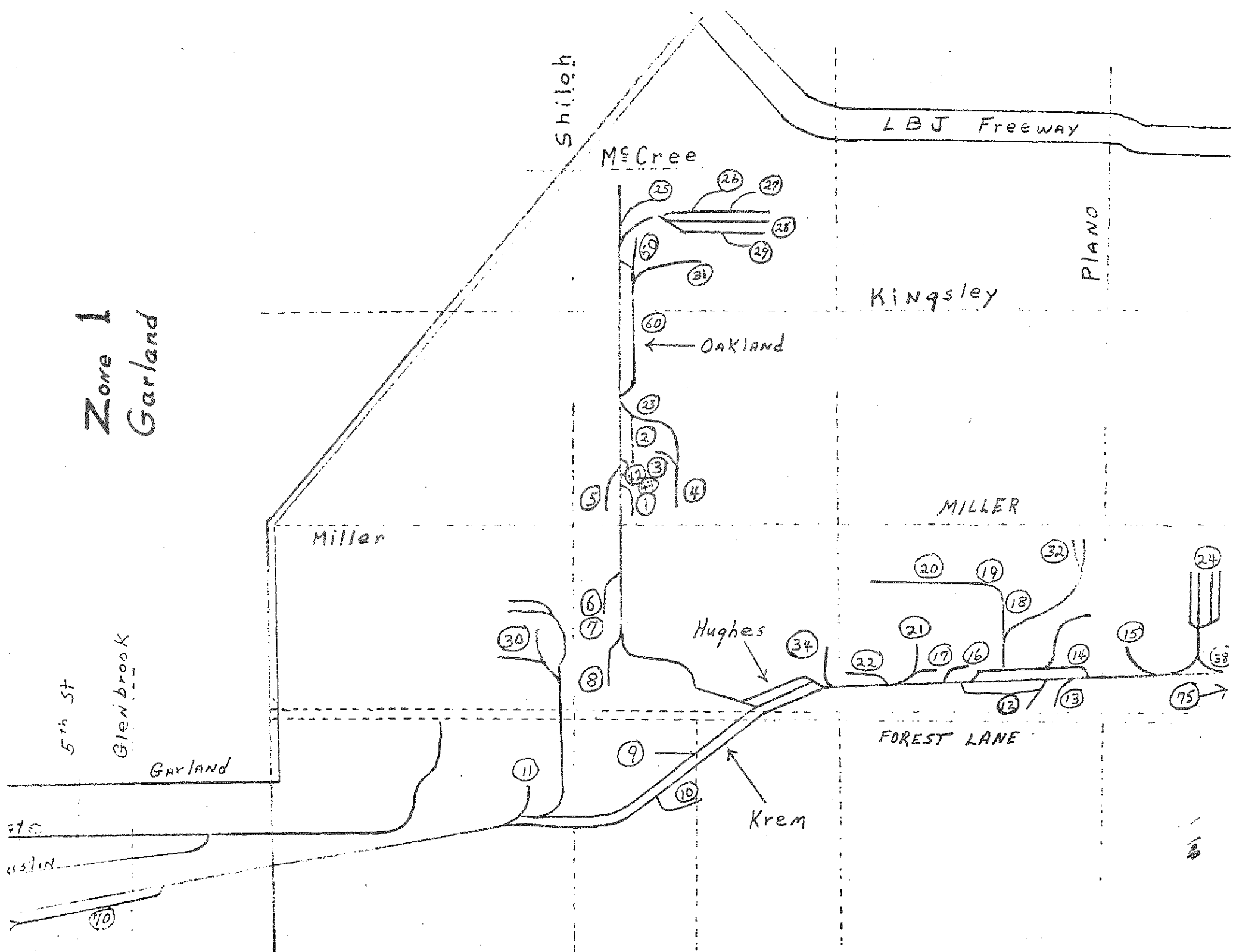
MOSER TEAM TRACK	525
MOSHER STEEL COMPANY	718
MULLER BRASS COMPANY	404
NATIONAL BLANK BOOK	424
NATIONAL CYLINDER GAS	414
NATIONAL GYPSUM COMPANY	423
NATIONAL LEAD COMPANY	220
NEUHOFF BROTHERS	344
NORTH TEXAS DRYWALL	729
NU METALS	656
OAKLAND TEAM TRACK	160
OIL WELL SUPPLY COMPANY	112
OLMSTEAD KIRK COMPANY # 1	733
OLMSTEAD KIRK COMPANY # 2	746
ONE SOURCE JOBBERS SUPPLY	780
PARKE DAVIS AND COMPANY	485
PARKER FALLIS INSUL NO 2	645
PEERLESS MFG	601
PENN TEAM TRACK	214
PENNEY J C WHSE	560
PENNSYLVANIA TIRE COMPANY	409
PETER PAUL INC	765
PIGGYBACK RAMP	124
POCO BAKERY	722
POLLOCK PAPER COMPANY KEIST	250
PRIMROSE OIL	630
PROCTER AND GAMBLE DIEST WHSE	245
PROCTER AND GAMBLE MAIN PLANT	207
PROCTER AND GAMBLE RIVER WHSE	210
PUREX CORP NO 1	530
PUREX NO 2	603
PURSE AND COMPANY	303
QUEMETCO	106
RAINBO DONUT	774
RATH PACKING	716
RCA TUBE DIVISION	465
REDWOOD DISTRIBUTORS	515
REYNOLDS ALUMINUM SUPPLY	418
RHEEM MANUFACTURING	435
RICHARDSON LBR	524
ROACH PAINT COMPANY BROOM ST	321
ROACH PAINT COMPANY RIVER ST	322
ROOSEVELT PAPER COMPANY	408
ROUNDS AND PORTER COMPANY	512
SAFEWAY STORES BEVERAGE	129
SAFEWAY STORES FROZEN FOOD	126
SAFEWAY STORES GROC	127
SAFEWAY STORES INC ICE CREAM	131
SAFEWAY STORES NON FOODS	128
SAFEWAY STORES PREPACK	125
SAFEWAY STORES PRODUCE PREPACK	140
SAGEBRUSH SALES	121
SANGER HARRIS COMPANY NO 1	462
SANGER HARRIS COMPANY NO 3	487
SHERWIN WILLIAMS COMPANY	104
SHILCH TEAM TRACK	150
SIGELS LIQUOR SALES	562

SILLIMAN AND ASSOCIATES	413
SIMMONS CO WHSE NO 2	678
SIMMONS COMPANY MAIN PLANT	502
SINGER SEWING MACHINE CO	767
SLAUGHTER	132
SLAUGHTER INDS INC	540
SMITH A C CORP	642
SMITH ALEXANDER CO INC	491
SOUTHERN MAID DONUT COMPANY	120
SOUTHERN TELEPHONE SUPPLY	452
SOUTHLAND DISTR COMPANY	436
SOUTHWEST GLOBE TICKET	472
SOUTHWEST MOULDING COMPANY	558
SOUTHWEST SCHOOL BOOK DEPOSIT	407
SOUTHWEST TABLET	240
SOUTHWESTERN DRUG COMPANY	478
SPEAS COMPANY	508
SQUARE D COMPANY	417
ST REGIS CONTR COMPANY	105
STANDARD BRANDS	713
STANDARD PACKAGING	437
STEWART COMPANY	776
STEWART OFFICE SUPPLY	715
STORM PRINTING COMPANY	763
SUMMIT SALES	314
SUNCRAFT OF CALIFORNIA	406
SUNNY JIM	624
SUPER CITY DEPT STORE	755
SUPERIOR PRODUCTS	666
SUPREME EQUIPMENT # 1	708
SUPREME EQUIPMENT # 2	709
SUTHERLAND LUMBER TEXAS INC	115
T AND W DISTRIBUTING COMPANY	466
TEXAS CARTAGE WHSE	235
TEXAS DISTRIBUTORS INC	533
TEXAS INSTRUMENT	764
TEXAS INSTRUMENTS	640
TEXAS LABS	605
TEXAS LITEWEIGHT CONCRETE	658
TEXAS SCHOOL BOOK DEPOSITORY	456
TEXAS TEXTURE PAINT	662
TEXLITE INC	771
THOMPSON CAN	670
THORPE PRODUCTS	426
TITCHES WAREHOUSE	544
TOP VALUE ENTERPRISES	468
TRANSCHINA FF COMPANY	458
TRI CITY LUMBER COMPANY	142
TRINITY PLYWOOD COMPANY	101
TRUETT LABS	668
UNIROYAL	444
UNITED DISTRIBUTORS	422
UNITED MOTERS	769
UNITED STATES PLYWOOD CORP	504
UNIVERSITY COMPUTING CORP	646
USCO SERVICES INC NO 1	443
USCO SERVICES INC NO 2	481



USCO SERVICES INC NO 3	482
U S ENVELOPE CO 10700 HINES	548
VALVOLINE OIL COMPANY	744
VANCO DISTR	467
VICKERY AND COMAPNY	775
VINSON SUPPLY CO	566
WALLBOARD COATINGS	674
WARD DRUG	113
WARLICK PRESS	402
WATSON FOOD SERVICE	761
WELCO MFG CO OF TEXAS	450
WELL MADE NOVELTY CO	301
WEST CHEMICAL COMPANY	742
WESTERN ELECTRIC COMPANY	358
WESTINGHOUSE ELECTRIC CORP	425
WEYERHAUSER COMPANY	109
WINTHROP LABS	757
WRIGHT WATER PROOFING CO	459
WYCHE AND COMPANY	707
ZELRICH COMPANY INC	628
ZEP MANUFACTURING COMPANY	474

Zone 1  
Garland



Shiloh

LBJ Freeway

McCree

PLANO

Kingsley

Oakland

Miller

MILLER

5th St

Glenbrook

Garland

Hughes

FOREST LANE

Krem

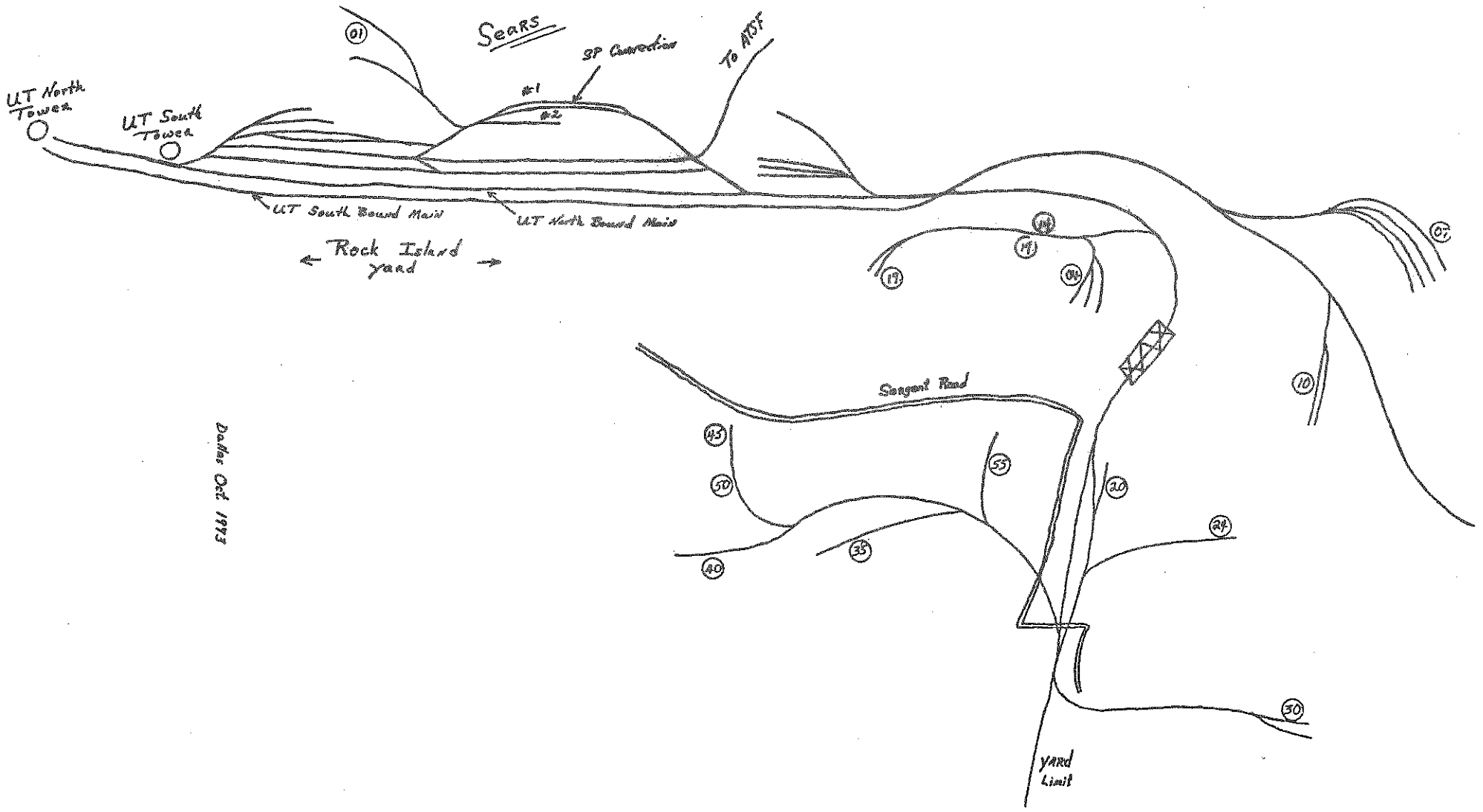
etc.

uslin

170

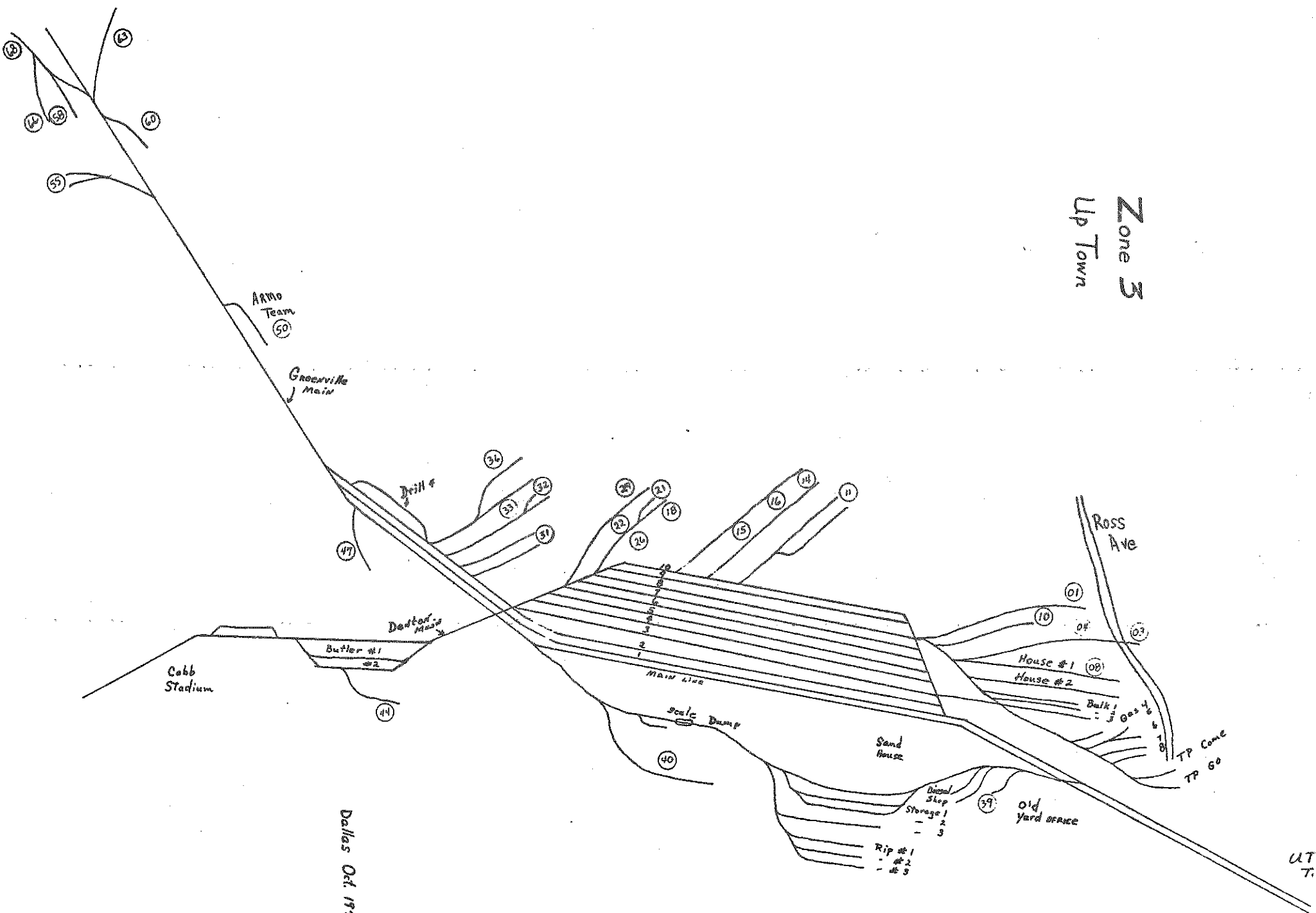
1/10/89

Zone 2  
South Dallas



Dallas Oct. 1973

Zone 3  
Up Town



Armo Team  
50

Greenville Main

Dadton Main

Butler #1  
#2

MAIN LINE

Scale Dump

Sand House

House #1  
House #2

Bulk 1  
Gas 4  
5  
6  
7  
8

TP Cone  
TP 60

old yard space

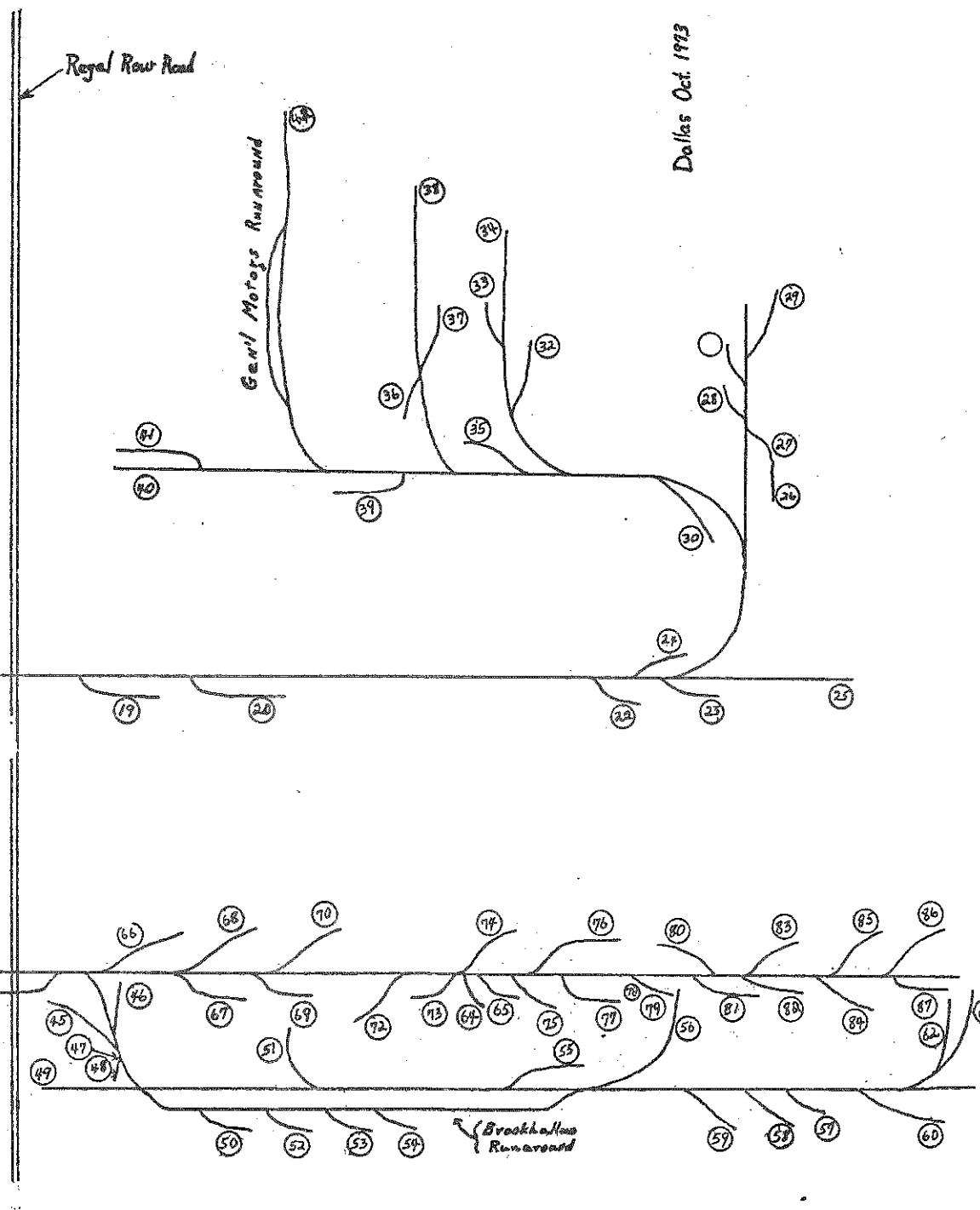
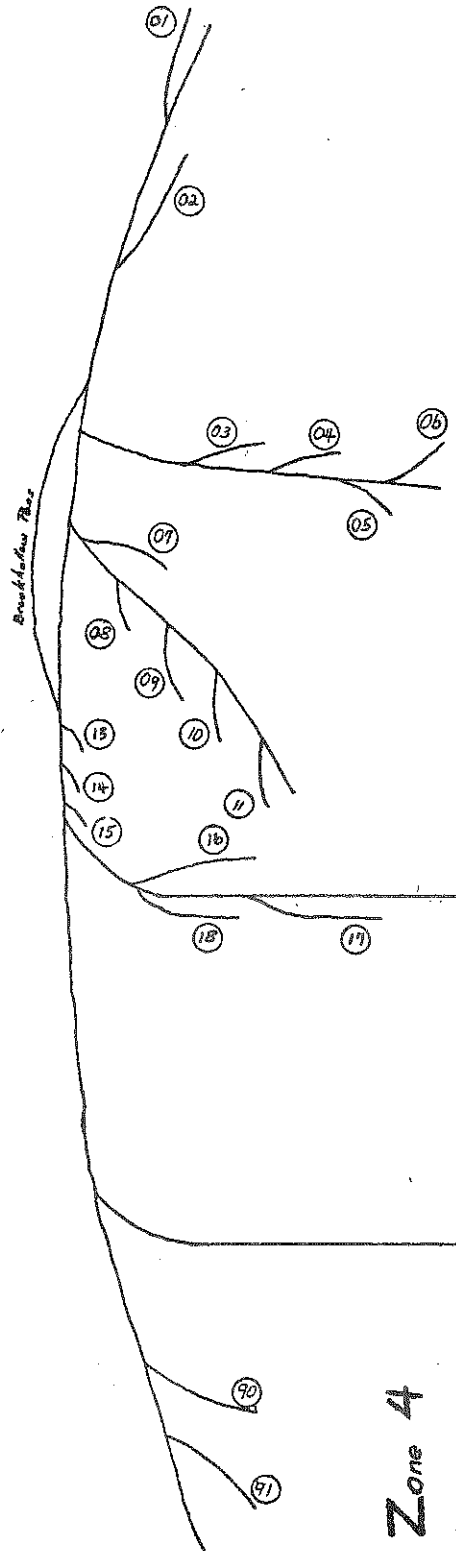
Rip #1  
- #2  
- #3

Disc  
Shop  
Storage 1  
- 2  
- 3

Cobb Stadium

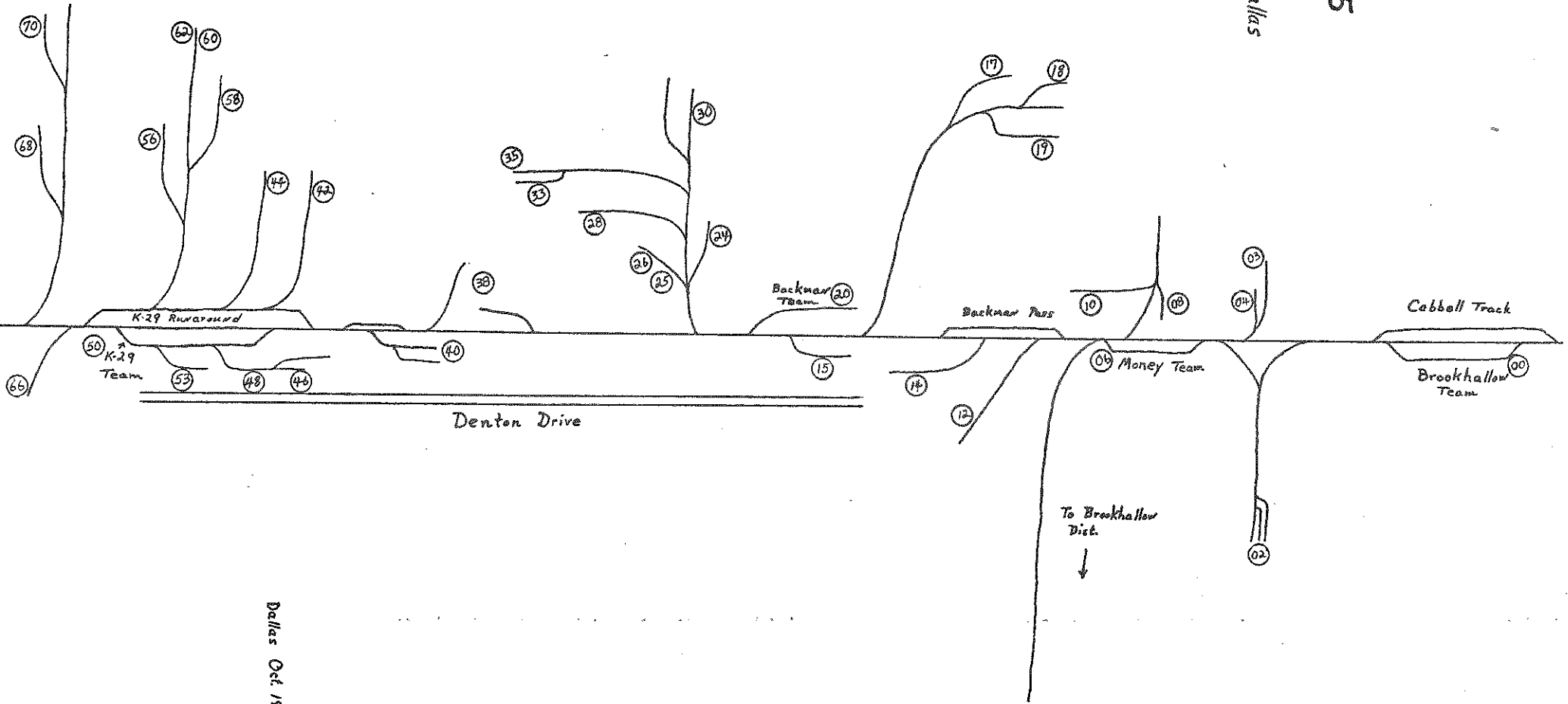
Dallas Oct. 1973

UT  
T.



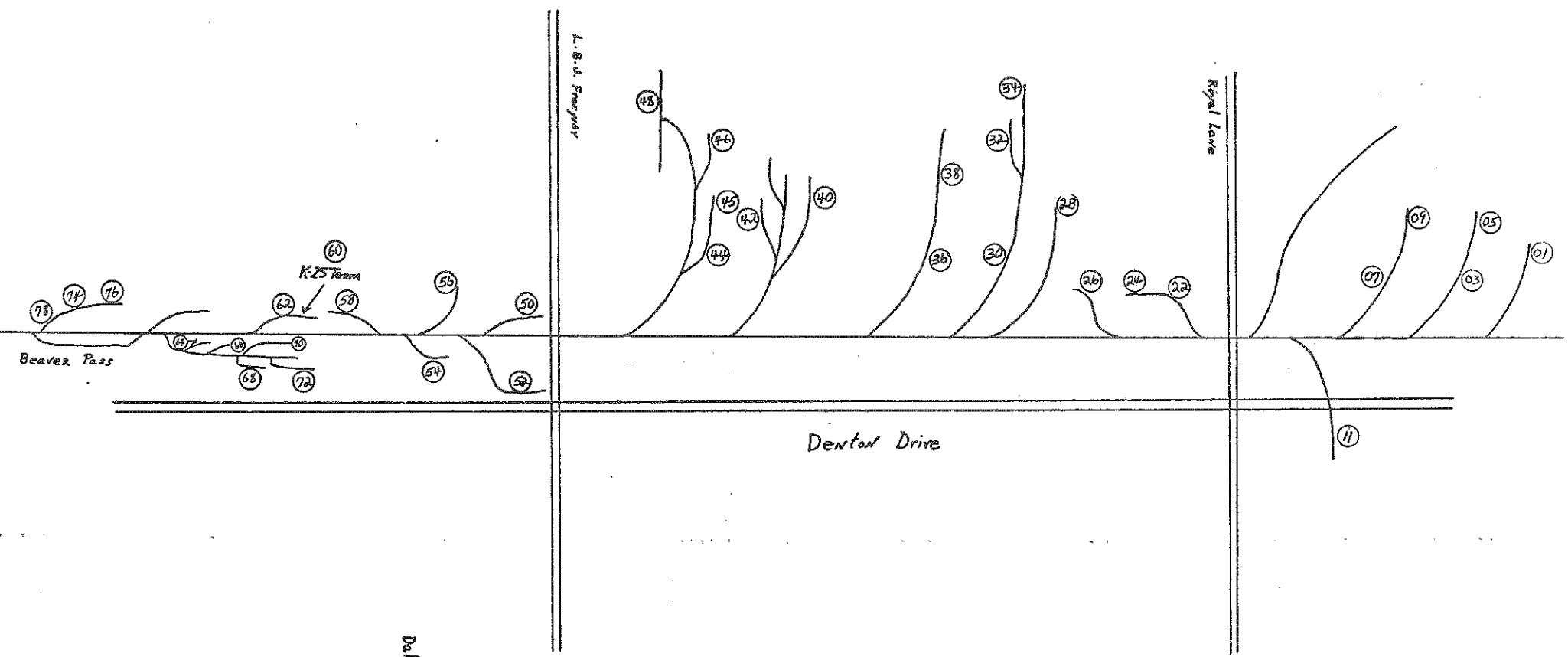
Zone 5

North Dallas



Dallas Oct. 1973

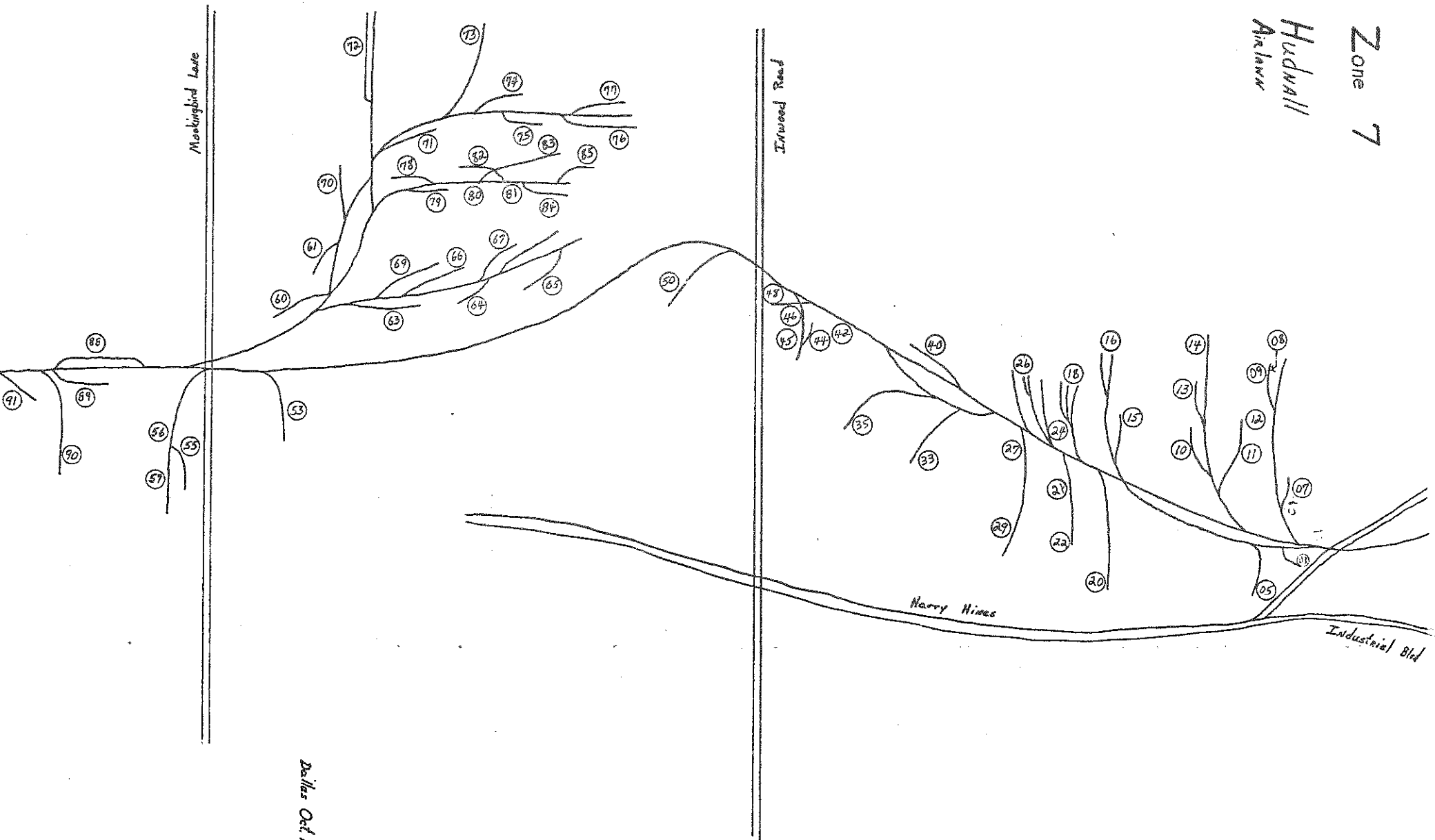
Zone 6  
Long North



Dallas Oct. 1973

Zone 7

Hudwall  
Arlowr



Dallas Oct 1973



