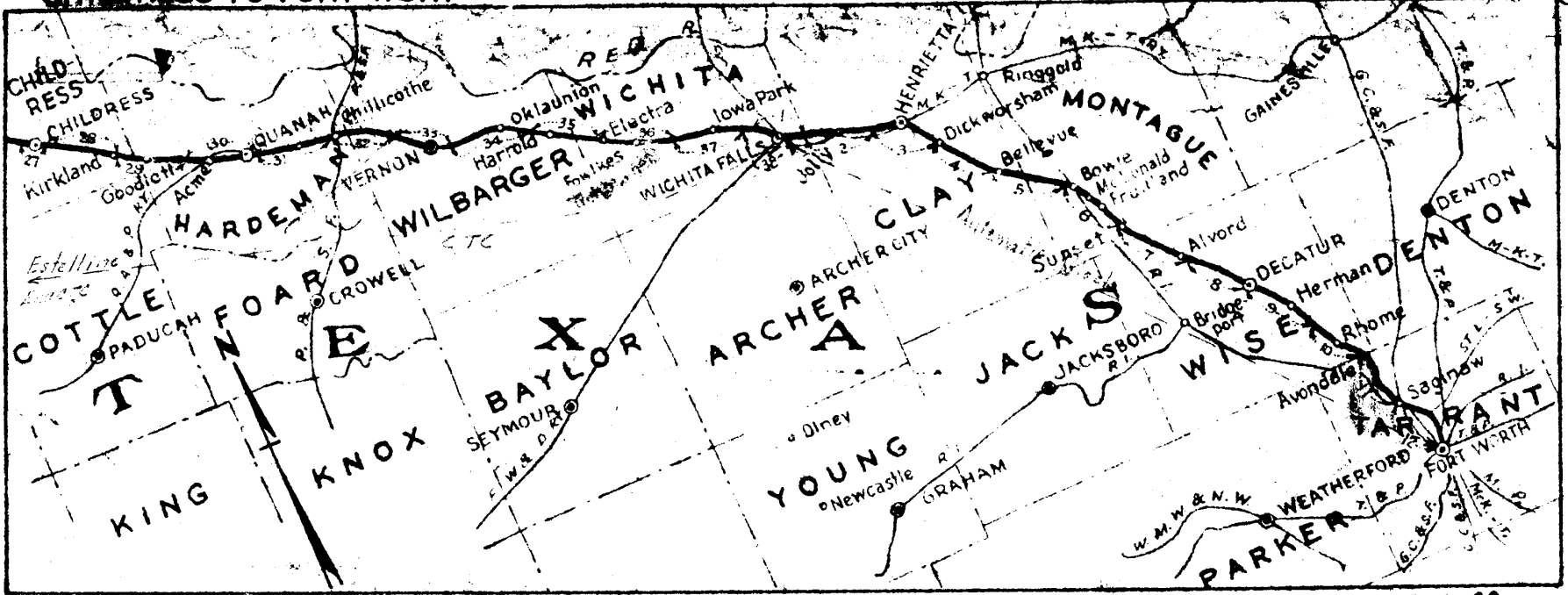


Fort Worth & Denver Ry. Co.

Track Chart
Wichita Falls Division
Fort Worth Area

Correct to 1-1-69

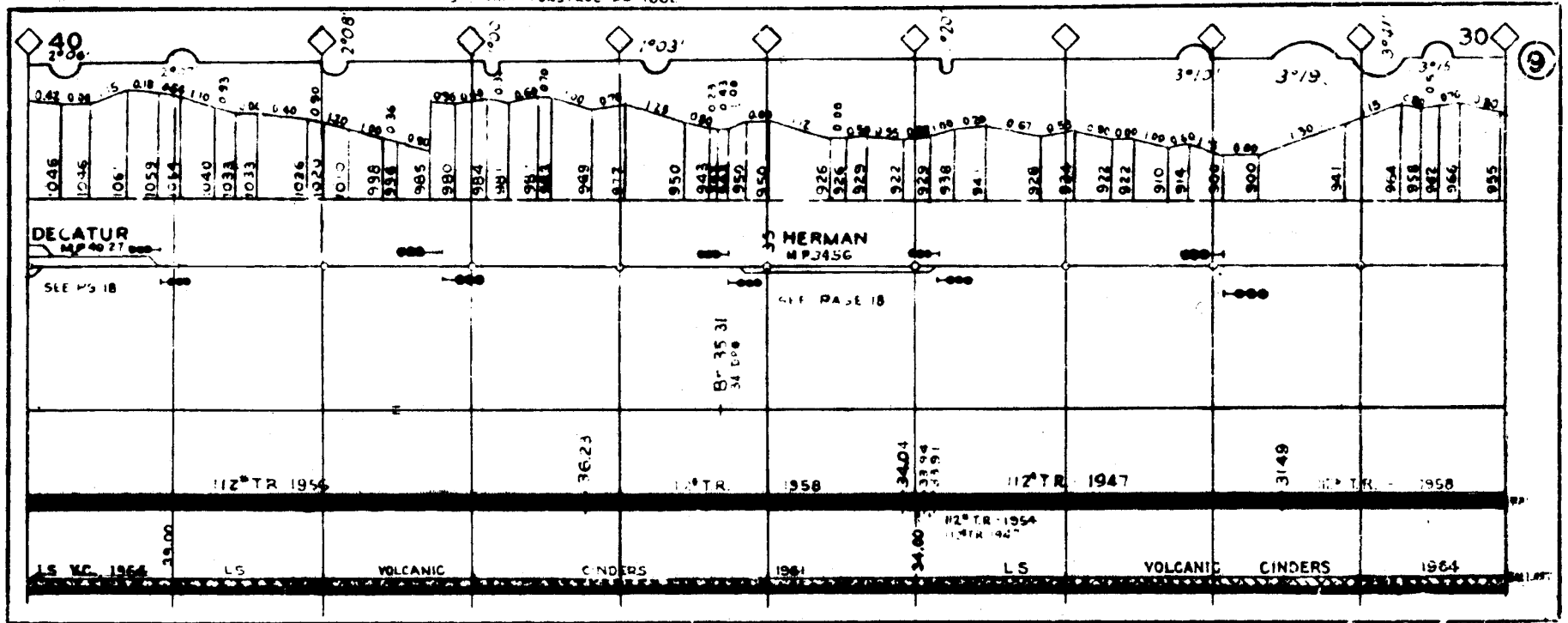
Prepared by
David W. Moore



← TO WICHITA FALLS

RAILROAD CONSTRUCTED 1882

TO FT WORTH

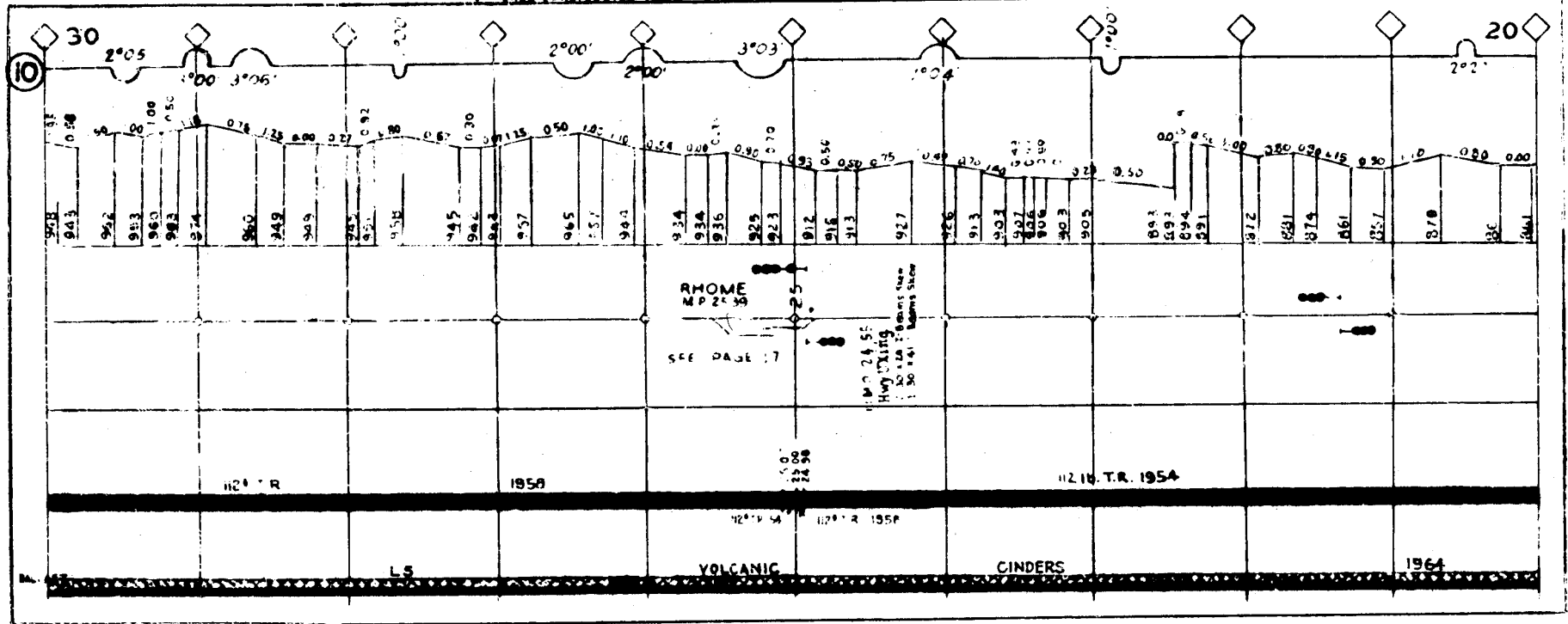


CORRECT TO 1-1-77

TO WICHITA FALLS

TO FT. WORTH

1ST TRACK CONSTRUCTED 1882

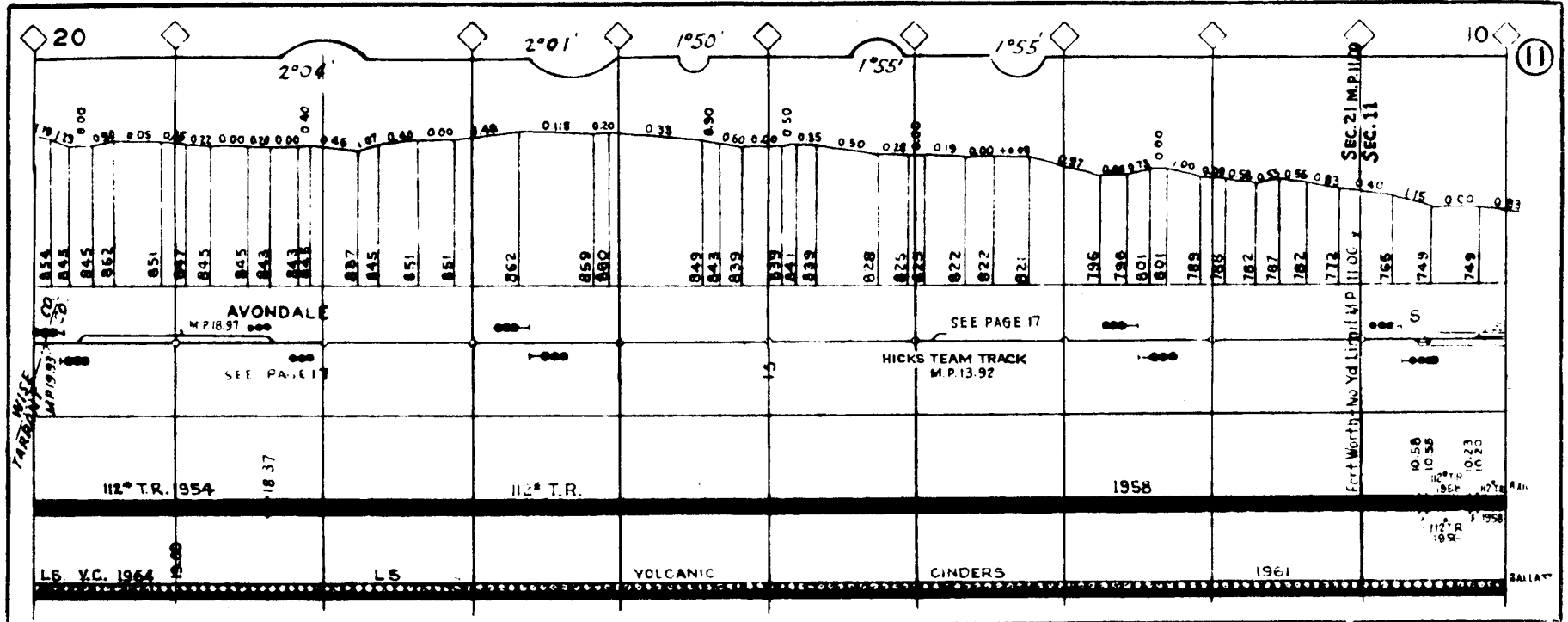


CORRECT TO 1-1-1954

← TO WICHITA FALLS

TRACK CONSTRUCTED 1882

TO FT WORTH →



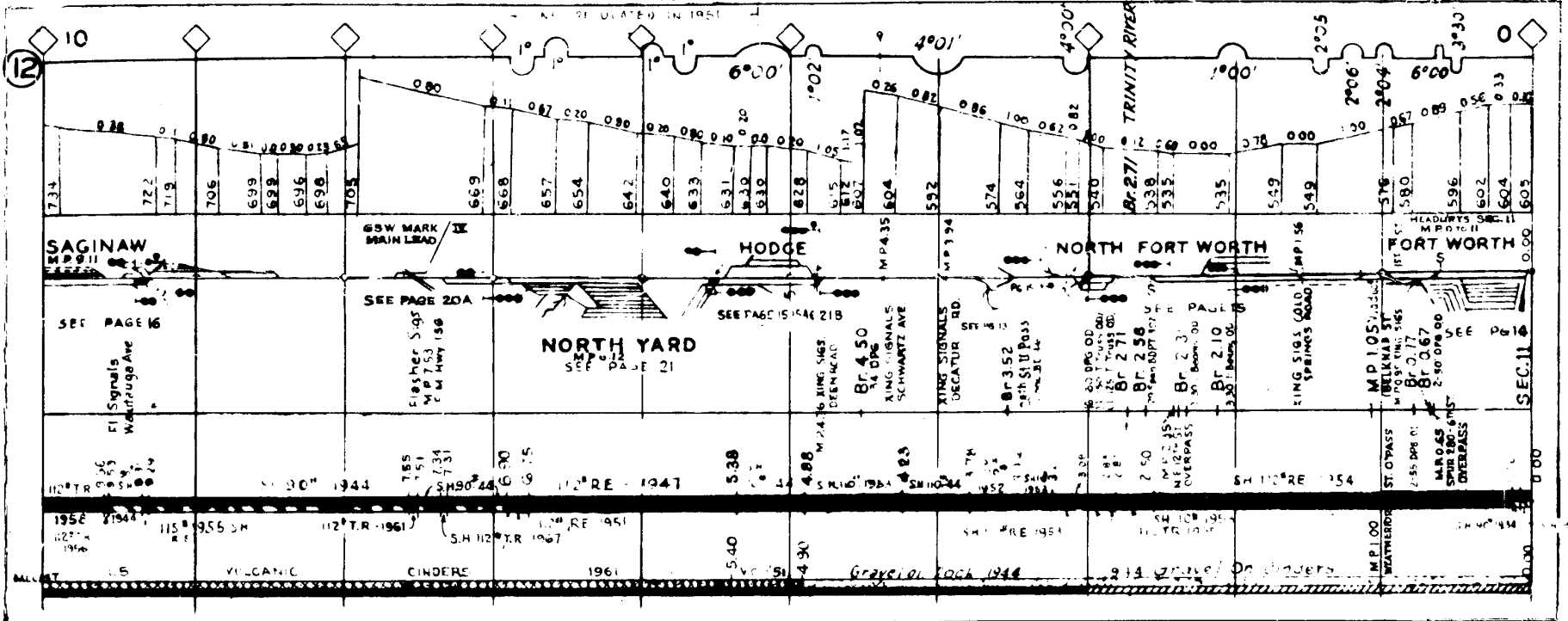
CORRECT TO 11-6

← TO WICHITA FALLS

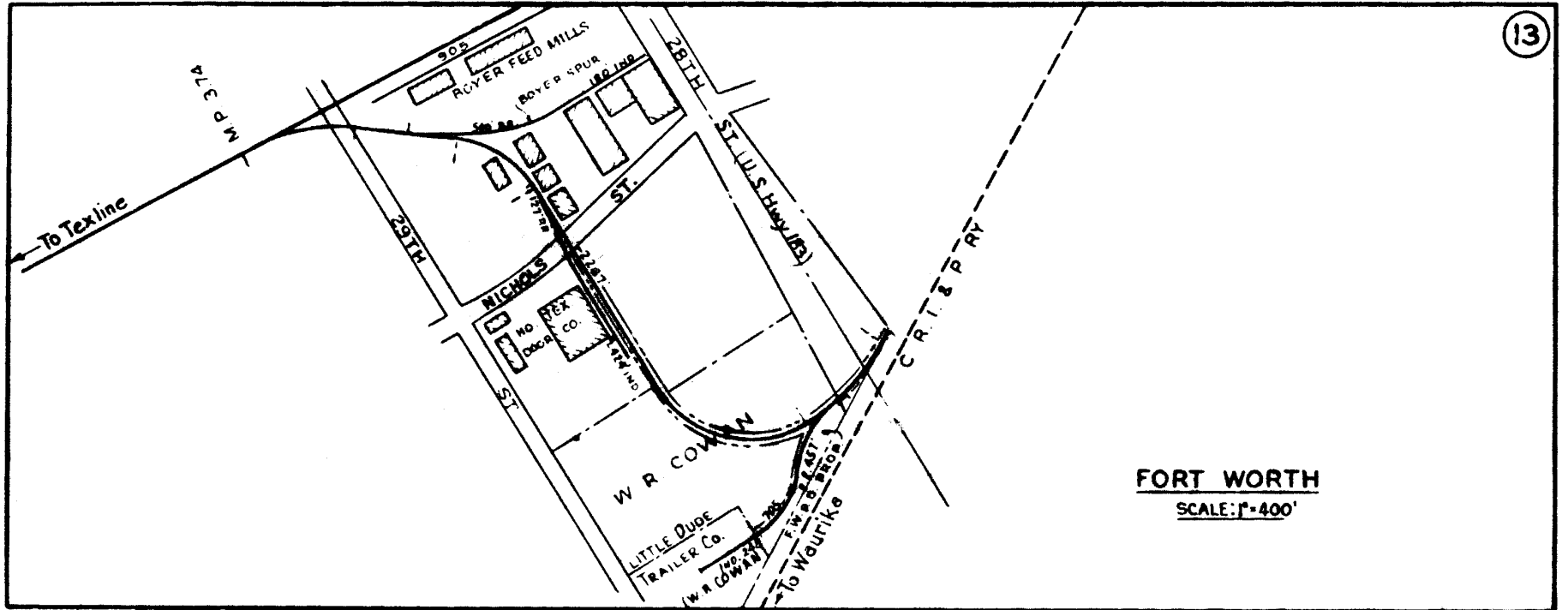
1ST TRACK CONSTRUCTED 1882

1ST TRACK CONSTRUCTED 1890

FORT WORTH

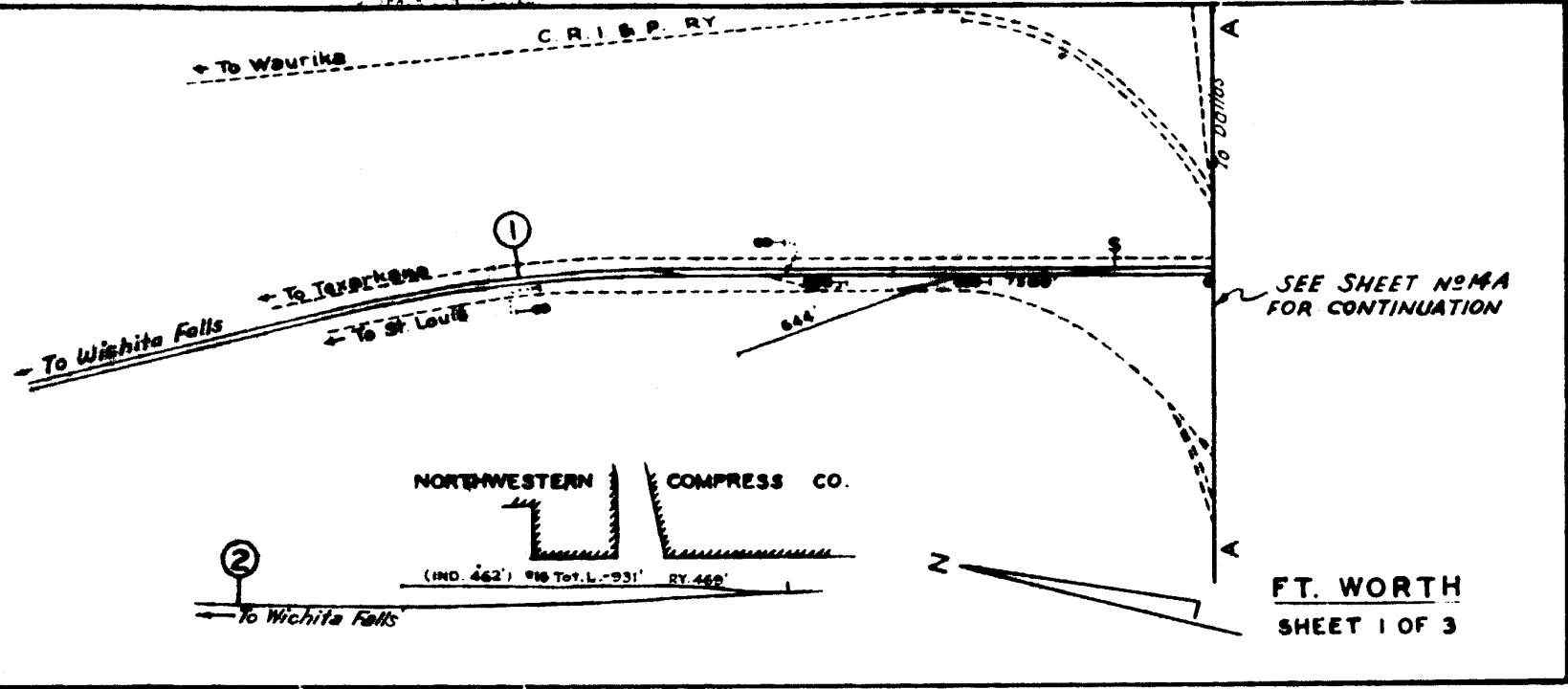


CORRECT TO 1-1-62

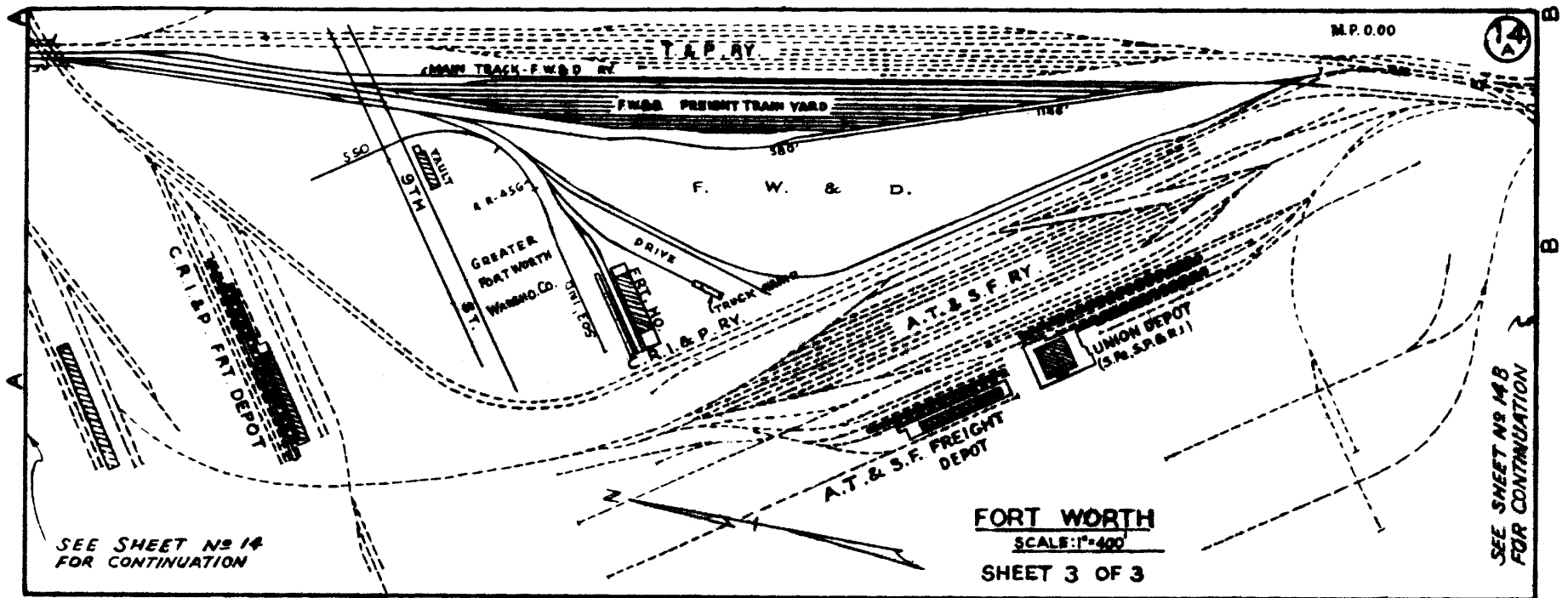


CORRECT TO 1-1-69

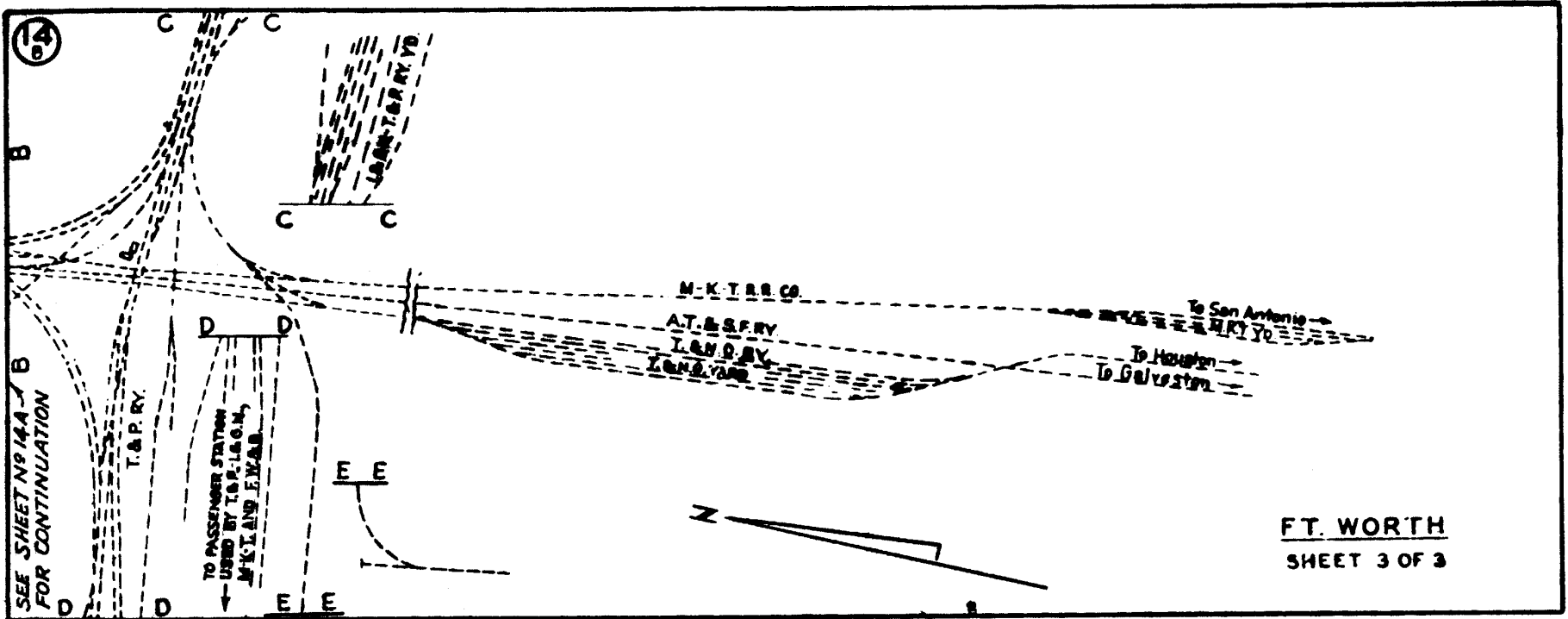
14



CORRECT TO 1-1-69



CORRECT TO 1-1-69

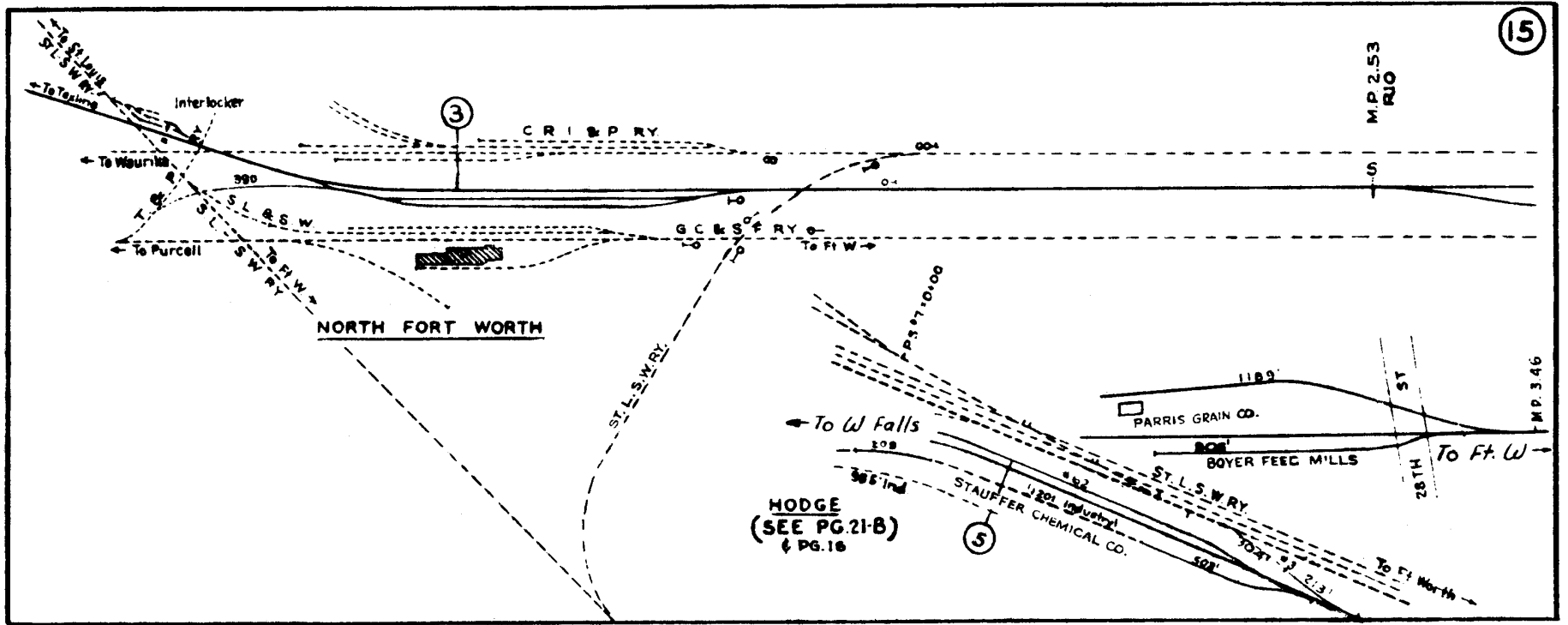


SEE SHEET NR 14A FOR CONTINUATION

TO PASSENGER STATION
USED BY T. & P., M. & K. AND F. W. & O.

FT. WORTH
SHEET 3 OF 3

CORRECT TO 1-1-69

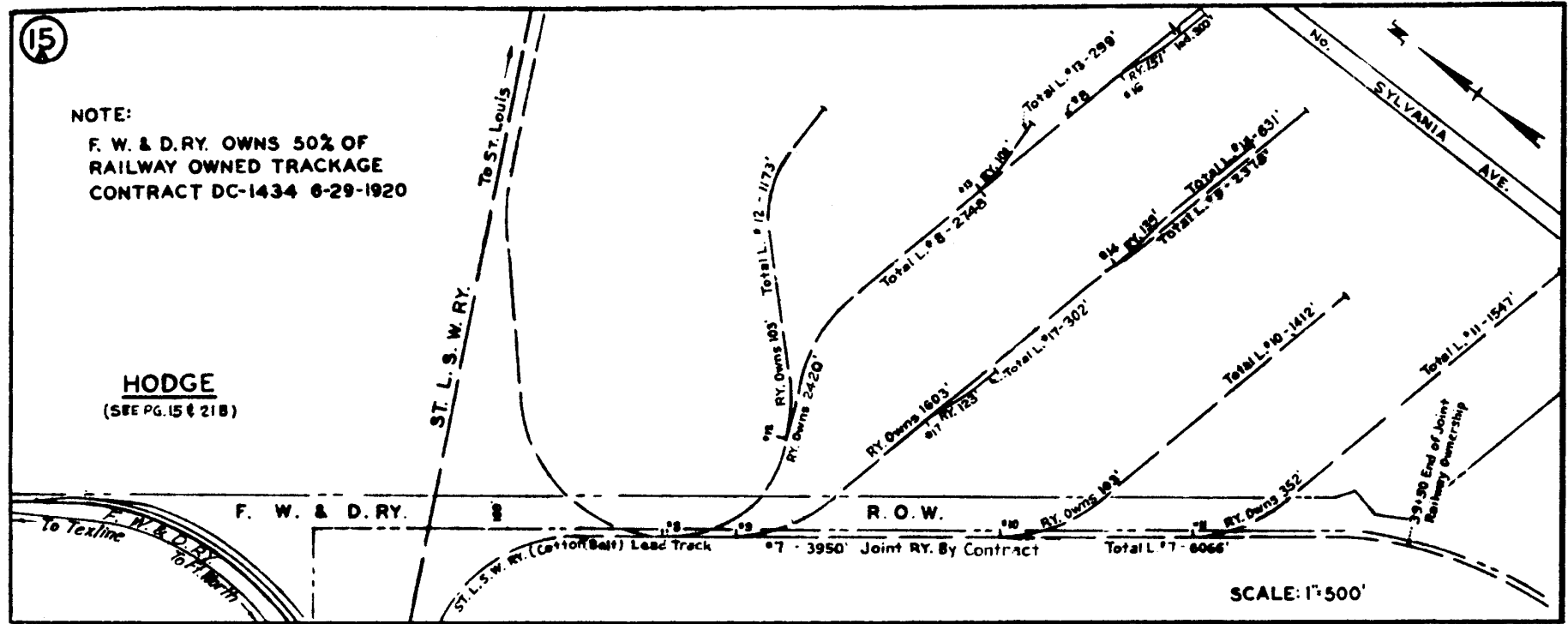


CORRECT TO 1-1-60

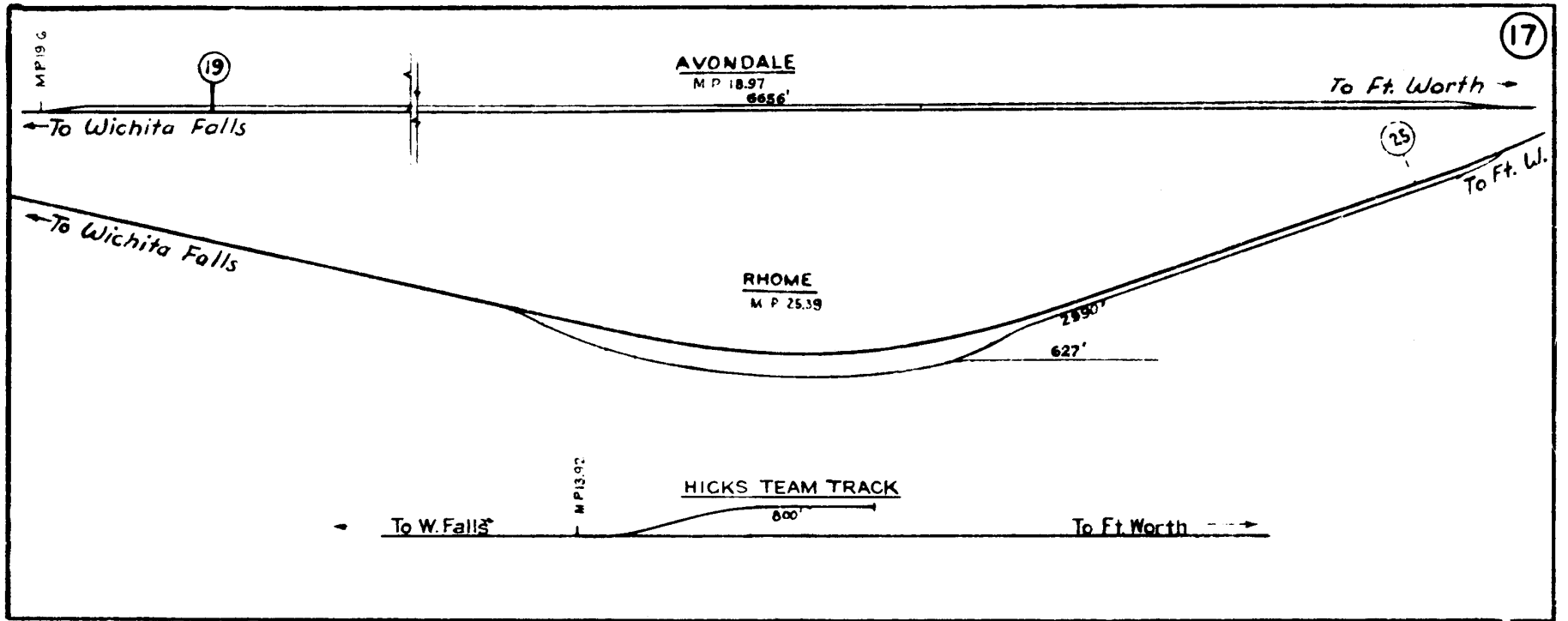
15

NOTE:
F. W. & D. RY. OWNS 50% OF
RAILWAY OWNED TRACKAGE
CONTRACT DC-1434 6-29-1920

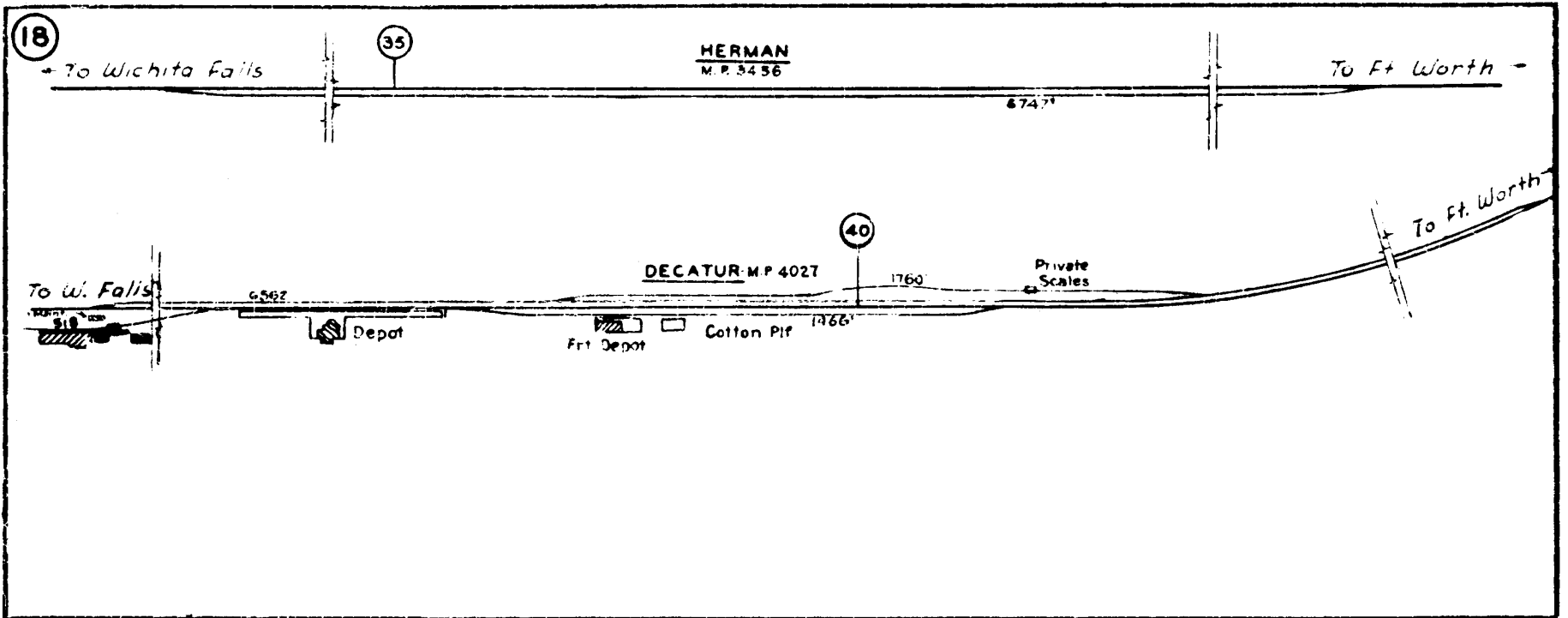
HODGE
(SEE PG. 15 & 21 B)



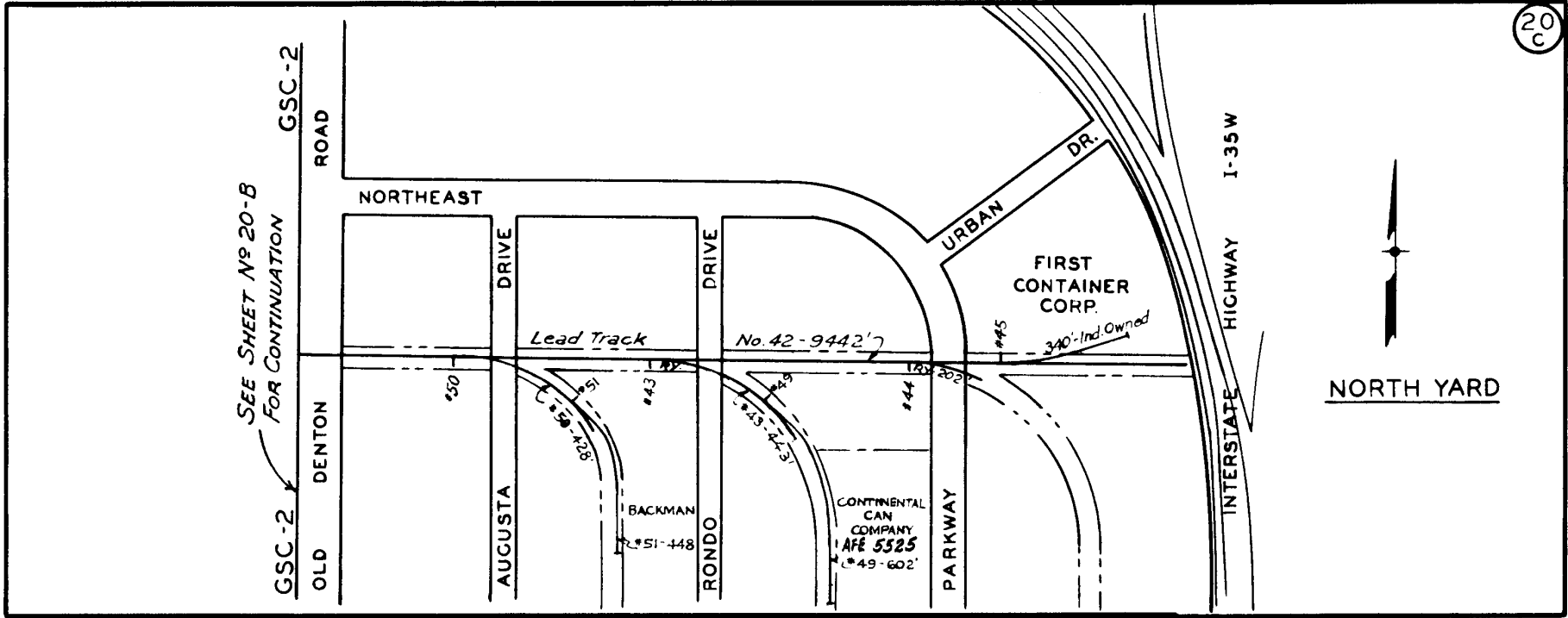
CORRECT TO 1-1-69



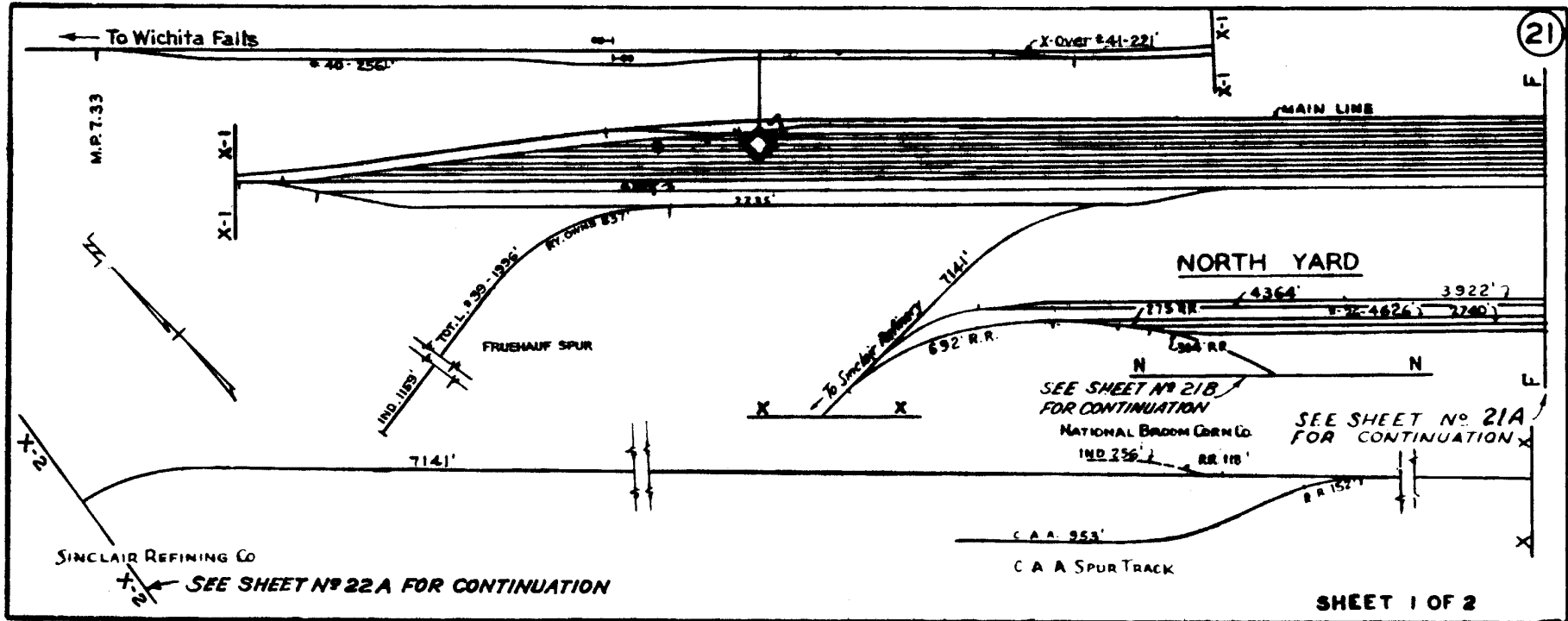
CORRECT TO 1-1-77



CORRECT TO 1-1-70

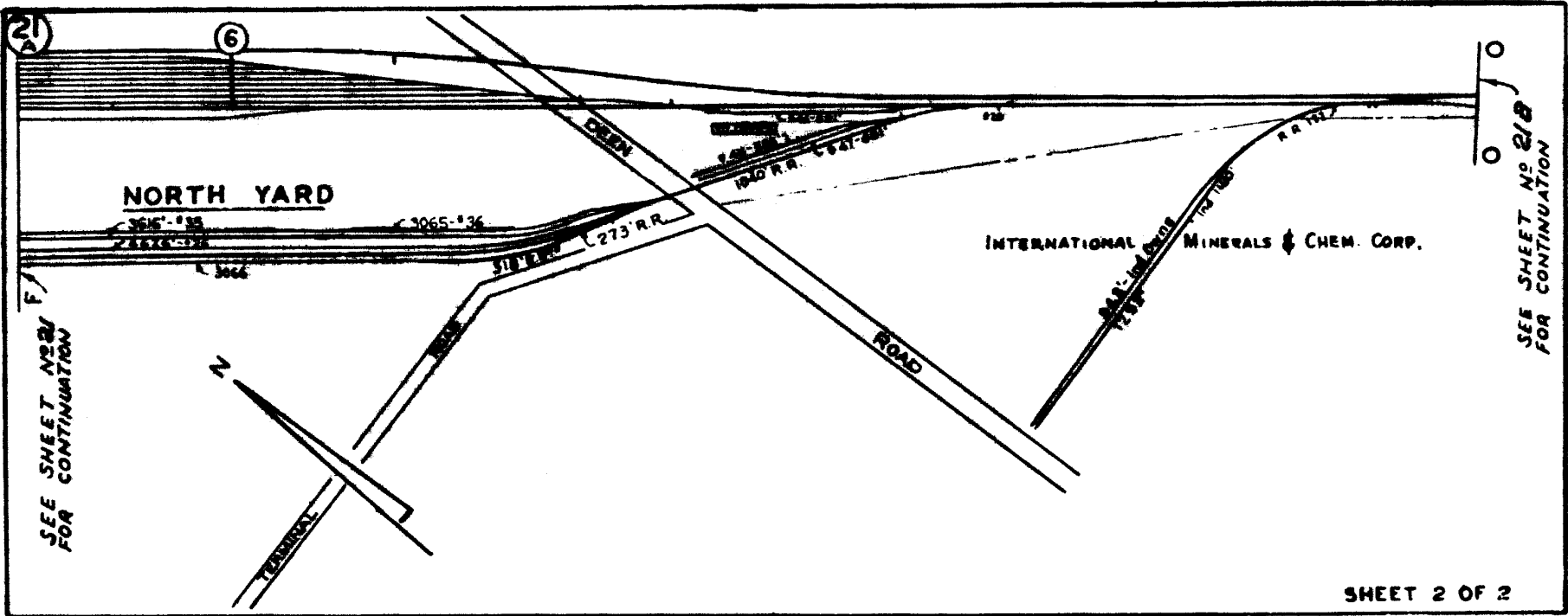


CORRECT TO 1-1-7



SHEET 1 OF 2

CORRECT TO 1-1-69



CORRECT TO 1-1-69