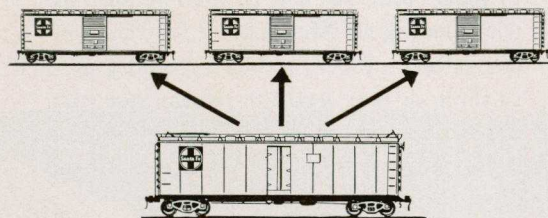


No matter where you are in the United States, Canada, or Mexico, there is a Santa Fe freight representative near you to help with your freight problems. Call him at the nearest Santa Fe Freight office listed below.

SANTA FE FREIGHT OFFICES

ALBUQUERQUE, N. M.	SANTA FE FREIGHT STATION
AMARILLO, TEX.	SANTA FE BLDG.
ATCHISON, KAN.	201 MASONIC BLDG.
ATLANTA 3, GA.	1314 RHODES-HAVERY BLDG.
BAKERSFIELD, CALIF.	EL TEJON HOTEL BLDG. 1413-17TH ST.
BEAUMONT, TEX.	413 PERLSTEIN BLDG., PEARL AND FANNIN STS.
BOSTON 16, MASS.	ROOMS 4-5 LITTLE BLDG., 80 BOYLSTON ST.
BUFFALO 2, N. Y.	1408 LIBERTY BANK BLDG.
CHANUTE, KAN.	SANTA FE STATION
CHICAGO 4, ILL.	500 RAILWAY EXCHANGE, 80 E. JACKSON BLVD.
CINCINNATI 2, OHIO	701 DIXIE TERMINAL BLDG.
CLEVELAND 14, OHIO	750 UNION COMMERCE BLDG.
COLORADO SPRINGS, COLO.	SANTA FE STATION
DALLAS 1, TEX.	1315 COMMERCE ST.
DENVER 2, COLO.	524-17TH STREET
DES MOINES 9, IOWA	601 EQUITABLE BLDG.
DETROIT 26, MICH.	1225 LAFAYETTE BLDG., 149 MICHIGAN AVE.
EL PASO, TEX.	100 SOUTH EL PASO ST.
FORT MADISON, IOWA	SANTA FE STATION
FORT WORTH 2, TEX.	207 CENTURY LIFE BLDG.
FRESNO 1, CALIF.	SANTA FE STATION
GALVESTON, TEX.	411-22ND STREET
HOUSTON 2, TEX.	800 TRAVIS ST.
HUTCHINSON, KANS.	511 WILEY BLDG.
INDIANAPOLIS 4, IND.	210 GUARANTY BLDG.
KANSAS CITY 6, MO.	614 FAIRFAX BLDG.
LEAVENWORTH, KAN.	781 SHAWNEE ST.
LONG BEACH 2, CALIF.	115 PINE AVE.
LOS ANGELES 14, CALIF.	121 EAST SIXTH ST.
LUBBOCK, TEX.	SANTA FE STATION
MEMPHIS, TENN.	870 SHRINE BLDG.
MEXICO CITY, MEX.	BOLIVAR 22-B
MILWAUKEE 3, WIS.	401 MAJESTIC BLDG.
MINNEAPOLIS 2, MINN.	1286 NORTHWESTERN BANK BLDG.
MONTERREY, MEX.	APARTADO 627
NEW ORLEANS 12, LA.	307 PERE MARQUETTE BLDG.
NEW YORK 7, N. Y.	225 BROADWAY
OAKLAND 8, CALIF.	40TH STREET AND SAN PABLO AVE.
OKLAHOMA CITY 2, OKLA.	2109 FIRST NATIONAL BANK BLDG.
PEORIA 2, ILL.	211 JEFFERSON BLDG.
PHILADELPHIA 7, PA.	1416 LINCOLN-LIBERTY BLDG.
PHOENIX, ARIZ.	401 TITLE & TRUST BLDG.
PITTSBURGH 19, PA.	1103 GULF BLDG.
PORTLAND 5, ORE.	1201 AMERICAN BANK BLDG.
PUEBLO, COLO.	401 N. UNION AVE.
SACRAMENTO 14, CALIF.	1000-10TH ST.
ST. JOSEPH 2, MO.	505 FRANCIS ST.
ST. LOUIS 1, MO.	300 COLUMBIA BLDG., 318 NO. 8TH ST.
SALT LAKE CITY 1, UTAH	811 CONTINENTAL BANK BLDG.
SAN ANGELO, TEX.	P. & S. F. STATION
SAN ANTONIO 5, TEX	1211 MAJESTIC BLDG.
SAN BERNARDINO, CALIF.	SANTA FE STATION
SAN DIEGO 1, CALIF.	1020 KETTNER BLVD.
SAN FRANCISCO 4, CALIF.	114 SANSOME ST.
SAN JOSE 13, CALIF.	700 COMMERCIAL BLDG.
SANTA BARBARA, CALIF.	29 W. CARRILLO ST.
SEATTLE 1, WASH.	THE 1411 FOURTH AVE. BLDG.
STOCKTON 3, CALIF.	101 E. WEBER AVE.
TEMPLE, TEX.	301 SOUTH MAIN ST.
TOPEKA, KAN.	SANTA FE BLDG.
TULSA 3, OKLA.	417 S. BOSTON AVE.
WASHINGTON 5, D. C.	525 SHOREHAM BLDG.
WICHITA 2, KAN.	314 UNION NATIONAL BANK BLDG.
WICHITA FALLS, TEX.	608 STALEY BLDG.

Transloading at Mahoney, Kansas



New



improved service
for handling west-
bound merchandise

Transloading at Mahoney, Kansas, serves two purposes.

First, it is a real benefit to merchandise shippers. Second, it enables Santa Fe to make full use of our freight equipment.

Over the Santa Fe lines there is a heavy movement of perishable freight from California and Arizona to eastern points. There is no corresponding westbound movement and as a result thousands of refrigerator cars must be returned empty to the West.

This traffic condition enables Santa Fe to place your box car of merchandise for transloading at Mahoney. The merchandise is taken from the box car and placed in three or four separate refrigerator cars, depending on the number of destination points of your shipment, and then moved direct to each destination.

This plan gives you the many benefits described in this folder and enables us to utilize westbound refrigerator cars while at the same time release a box car in the wheat belt and industrial area of the middle west where box cars are always in demand.

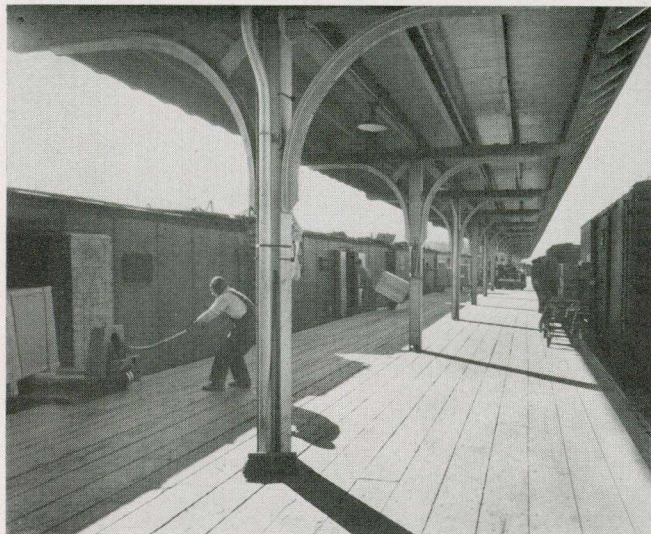
H. Rockwell

*General Freight Traffic Manager
Santa Fe System Lines
Chicago, Illinois*

How transloading at Mahoney works for you!

For example, you have a car of merchandise and have routed this car to western points to reach Santa Fe rails at Chicago, Illinois Junction, or Missouri Junction, Kansas City or East.

This merchandise car may be destined to three separate western points or less in addition to destination, which will require it to make four separate stops. Rather than have the car routed to each point for unloading you desire to take advantage of the transloading service at Mahoney.



This photograph shows box car at transloading platform at Mahoney, Kansas, with refrigerator cars spotted on the opposite track. Here a three-way split is taking place. The car in the foreground at right, where men are removing a

truck load of packages, will serve a load for the three refrigerator cars in the foreground at the left.

Due to the short distance across the platform most freight is moved on hand equipment, however, further down the platform you will note a 5,000 lb. capacity lift truck for handling heavy articles.

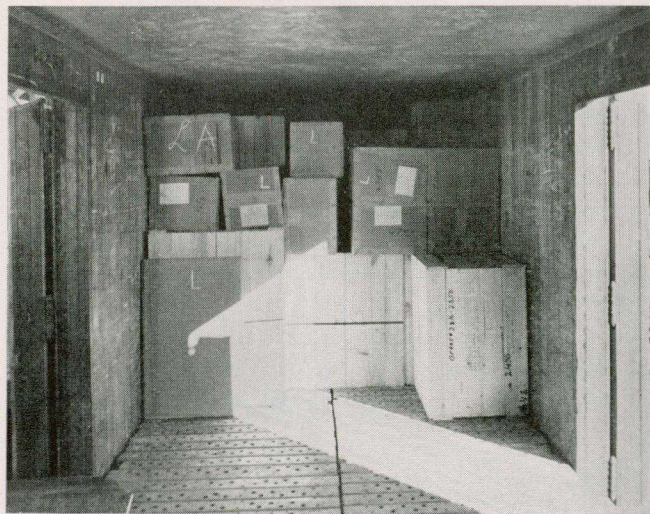
To assure proper loading of refrigerator cars which will carry west the merchandise from the inbound box car, every precaution is followed.

A separate car clerk is assigned to each inbound box car. On the side of the outbound



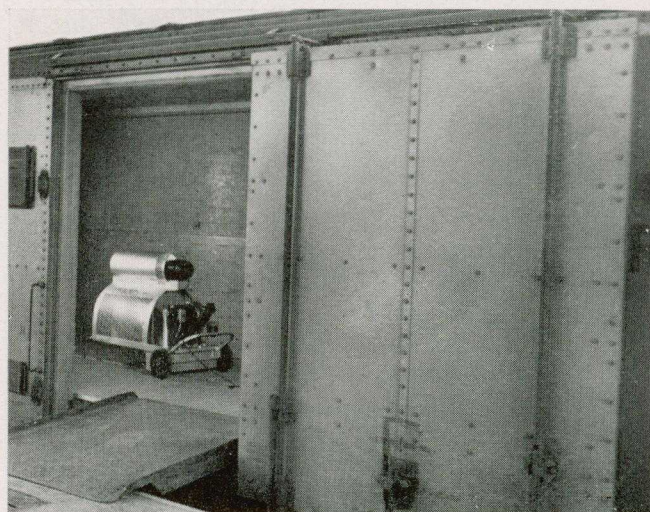
refrigerator car in the above photograph you will note the foreman's loading directions.

"Lenihan" is the name of the car clerk. The number shown below the car clerk's name is the inbound box car number. "L.A." stands for Los Angeles, the destination of the car, while the circled "13" is the block number to be shown on lead packages before leaving the inbound car. The letter "L" is the symbol that must be watched by stowmen to assure correct loading.



When the entire transloaded lot consists of cartons and boxes the load is levelled off and stowed solid. When package freight must be loaded with rough freight, bulkheads are installed. Note letters "L.A." indicating destination of complete shipment on top box and "L" on each box in this car.

Each refrigerator car is thoroughly dried before being loaded.



A Silent Glow Car Dryer removes all traces of moisture from refrigerator cars, which makes them perfectly dry for shipping merchandise cargo whether the contents be packed in a cardboard carton, a sack container, or similar type material. Special heaters can also be placed in refrigerator cars when merchandise is perishable, such as, drugs, candies, etc., and needs heat protection during extremely cold weather while in transit.

Note this particular car has wide doors making it suitable for extra long or wide merchandise loading.

What are the benefits?

1. Quicker dispatch of your merchandise freight is made possible by transloading at Mahoney.

Instead of one box car of merchandise moving from customer to customer, which is subject to terminal delays and customer's unloading problems, the box car is placed at Mahoney and the contents transloaded to separate refrigerator cars for direct movement to points where the merchandise is to be unloaded. All customers get delivery on same day and in a separate car.

Inbound box cars reaching Mahoney, Kansas, by 2:00 PM are transloaded and refrigerator cars continue west the same day of arrival. After 2:00 PM box cars are unloaded and loaded refrigerator cars may move the same day—if not, they will be rolling before 9:00 AM the following morning.

2. Less chance for damage.

By transloading at Mahoney your merchandise is placed in separate refrigerator cars, properly braced and handled by experienced Santa Fe personnel. On arrival at destination it can be easily unloaded.

If the box car was dispatched through for breakbulk at three or four destinations there is a chance of the merchandise not being properly stowed after part of the contents were unloaded at the various drop-shipment points.

3. A profitable way to ship.

If your traffic can be handled through this transloading service you only have to pay the carload rate plus a nominal stop-in-transit charge for each stop point.

Every westbound merchandise shipper should investigate this service

It is easy to learn if you can use Santa Fe's transloading service operated at Mahoney, Kansas. Let your Santa Fe freight representative check your tonnage, destinations, and other simple details, to show you how to route your merchandise freight to western points with transloading at Mahoney.

Here's another way you benefit when you ship "Santa Fe all the way"!

MAHONEY, KANSAS, TRANSFER

