

A FEW OF THE INDUSTRIES

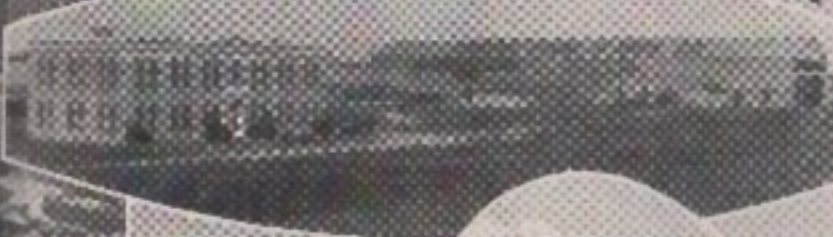
*We Serve Exclusively*



**PUBLIC MARKET**



**CAPITOL STEEL & IRON COMPANY**



**PACKING PLANTS  
OKLA.  
NATIONAL  
STOCK  
YARDS**



**BLACK, SWAILS & DYSON INC. AMERICAN TANK**

**COLETT  
FEED PENS  
EXTENSIVE  
CATTLE  
FEEDING**



**AUTO DOCKS  
IN THE HEART OF  
OKLAHOMA CITY**

Oklahoma Railway Company  
and Connections



Carload Interchange Points at Oklahoma City,  
Oklahoma with—

- Santa Fe
- Rock Island
- Ft. Smith & Western
- Missouri, Kansas & Texas
- Oklahoma City, Ada & Atoka
- St. Louis & San Francisco

At Guthrie, Oklahoma, with—  
Santa Fe  
Ft. Smith & Western.

At El Reno and Yukon, Oklahoma, with—  
Rock Island.



Oklahoma Railway  
Company

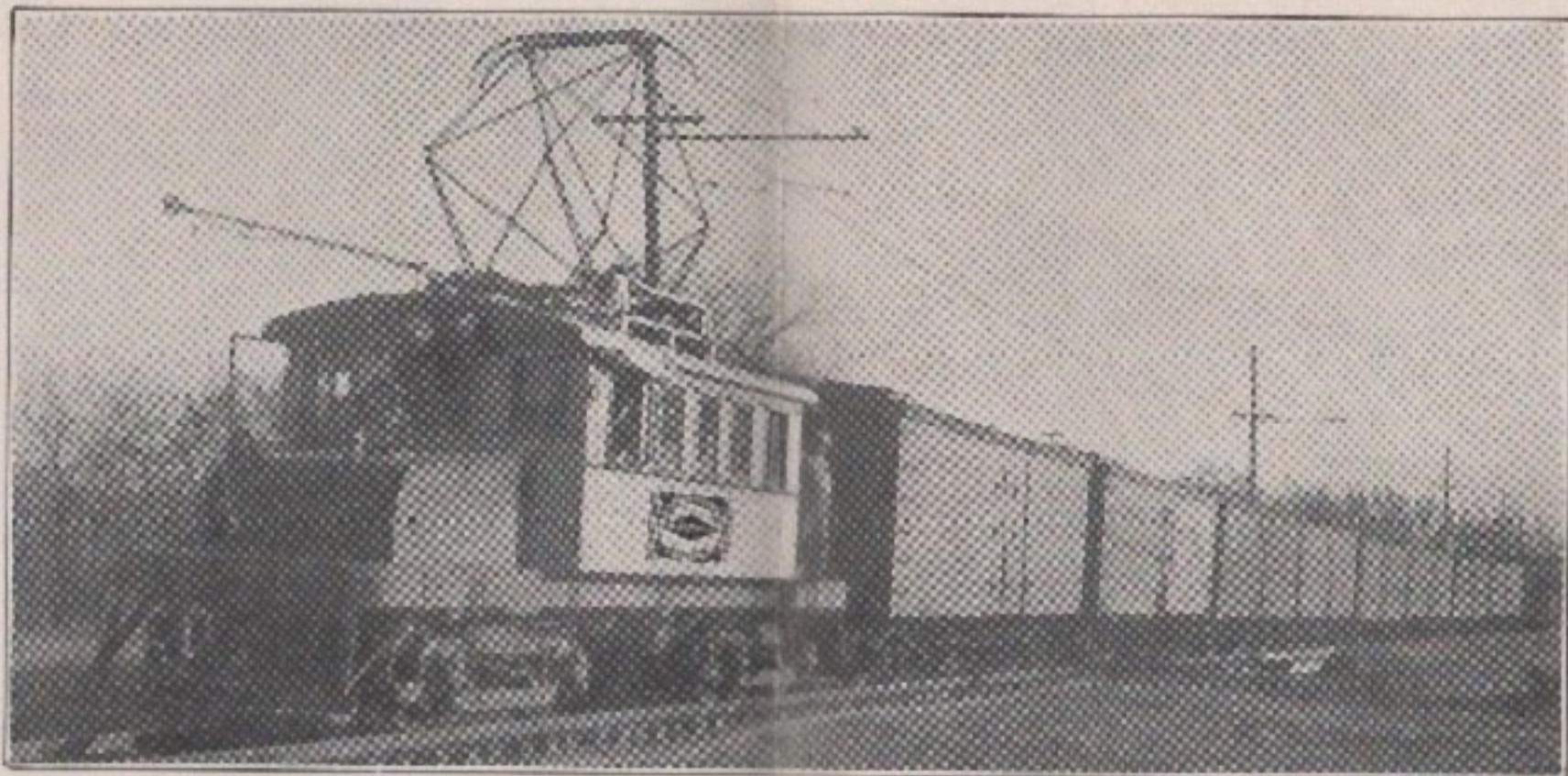
*Dependable - Fast*

**INTERURBAN  
FREIGHT**

**EXPRESS**

*Service*





ONE OF OUR MANY ELECTRIC LOCOMOTIVES IN REGULAR SERVICE

## SWITCHING SERVICE 24 HOURS DAILY CENTRALLY LOCATED INDUSTRIAL SITES

We maintain daily and special service between all points making direct morning and evening connections with the C. R. I. & P. at El Reno, Oklahoma and with the Santa Fe and F. S. & W. Railways at Guthrie, Oklahoma, thus affording prompt delivery of all car load freight.

Special attention to carload shipments consigned in care of the Oklahoma Railway for delivery at any of our many team tracks or unloading docks, assuring rapid and convenient delivery.

Warehousing Facilities—Industrial Sites available within the switching limits, Belt Line or Suburban Territory.

Ask Any Agent



OKLAHOMA RAILWAY COMPANY

# SERVING OKLAHOMA CITY INDUSTRIAL DISTRICT with Conveniently Located Team Tracks and Free Pick-up and Delivery

The Oklahoma Railway Company operate regular L.C.L. Package Car Service to Oklahoma City and all points on line, regular service from Oklahoma City to points served by our line both freight and express with Free Delivery at all agency stations.

Through Chicago, Illinois, Third Morning Delivery Routing Wabash Railway, St. Louis, Mo., Missouri Pacific, Ft. Smith and Western, Oklahoma Railway Package Car.

Through St. Louis, Mo., or Memphis, Tenn., Second Morning Delivery—Routing via connecting lines to St. Louis or Memphis, thence Missouri Pacific, Fort Smith & Western, Oklahoma Railway Package Car.

New York and Eastern Seaboard Territory via Rail and Water, routing Norfolk & Western Dispatch, Southern Railway, Memphis, Missouri Pacific, Fort Smith and Western, Oklahoma Railway Package Car.

Pool Car Shippers: Due to our regular service conveniently timed, the Oklahoma Railway can best serve the distributor of pool car shipments made at Oklahoma City for points on our line, Guthrie, Edmond, Britton, Moore, Norman, Bethany, Yukon, Banner, El Reno.

For further information address—

NEIL NORSWORTHY, Traffic Manager

A. O. STEPHENS, G. F. & P. A.

A. S. JOHNSON, A. G. F. & P. A.

C. C. COLE, Genl. Agent

D. A. HOLLY, Trav. Agent

Box 995

Oklahoma City, Okla.

Telephone 3-7487

GEORGE F. KLEINHOPFER, G. A.

405 Midland Bldg.

Kansas City, Mo.

Telephone Victor 2620

E. R. BICK, Gen. Nor. Agent

309 So. LaSalle Street

Chicago, Illinois

Telephone Wabash 1530

M. E. WILLIAMS,

P. O. Box 213

McAlester, Oklahoma.



OKLAHOMA RAILWAY COMPANY