

SOUTHERN PACIFIC COMPANY  
PACIFIC LINES  
**SAN JOSE**  
PROPOSED REARRANGEMENT OF TRACKAGE TO  
PROVIDE TWO MAIN TRACKS OPPOSITE PASSENGER YARD  
 Scale: 1"=100'    S.E.G.    October 21, 1965

WESTERN DIVN.  
 DRAWING S 3094  
 SHEET NO. 1

scans of selected portions by Wx4.org, 6-29-2019

**LEGEND:**

- Southern Pacific Co., Property Lines
- Red - Proposed New Work.
- Yellow - Remove or Relocate.
- Proposed Paving.
- Green - Future Proposed Car Washer.

Total Red Tracks - 24 Turnouts & 9285 T.F.  
Total Yellow Tracks - 24 Turnouts & 7245 T.F.  
Excess Red Tracks 0 Turnouts & 1340 T.F.  
Const. 1000 T.F. New 112" Track For New Westward Main and 340 T.F. New 112" Track For New Eastward Main - Total 1340 T.F.  
Shift 1380 T.F. Existing Track To Location - New Westward Main  
Shift 1700 T.F. Existing Track To Location - New Eastward Main  
Shift 1110 T.F. Existing Yard Track To Location - New Yard Track.  
4190 T.F. Total Shift Track.  
Total Relocate 24 Turnouts & 3815 T.F.  
Change Out Existing 132"-112"-110" & 90" Rail 8870' To 6075 T.F. 9870' New 112" Rail - New Eastward & Westward Main & Connectives.  
Change out 3" 70" To 4220 T.F. In Existing East Ladder To 3 3/4" 132" To 4220 T.F. For Paving in New East Ladder.  
Change out 1080 T.F. 75" Rail To 1080 T.F. 90" Rail in Track No. 7.

RY  
699.45

COTTAGE LANE

H.S. Chase Property

BARNARD BROS.

SOMERS, O'REAR & STEPHENS

E.B. Pray  
Dead End 21932

To SAN FRANCISCO

UNION ICE CO.

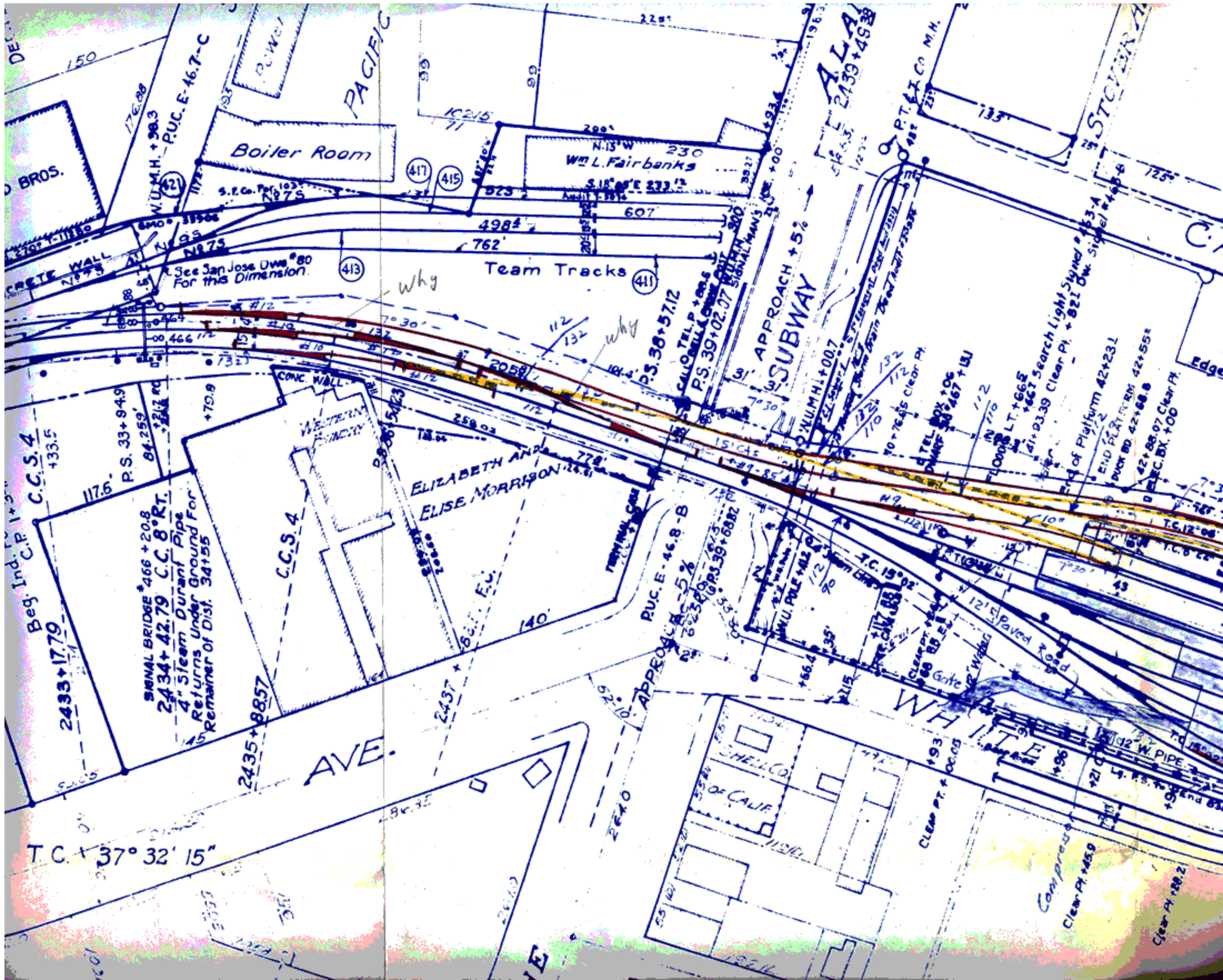
RICHMOND, CHASE CO.  
Plant #15

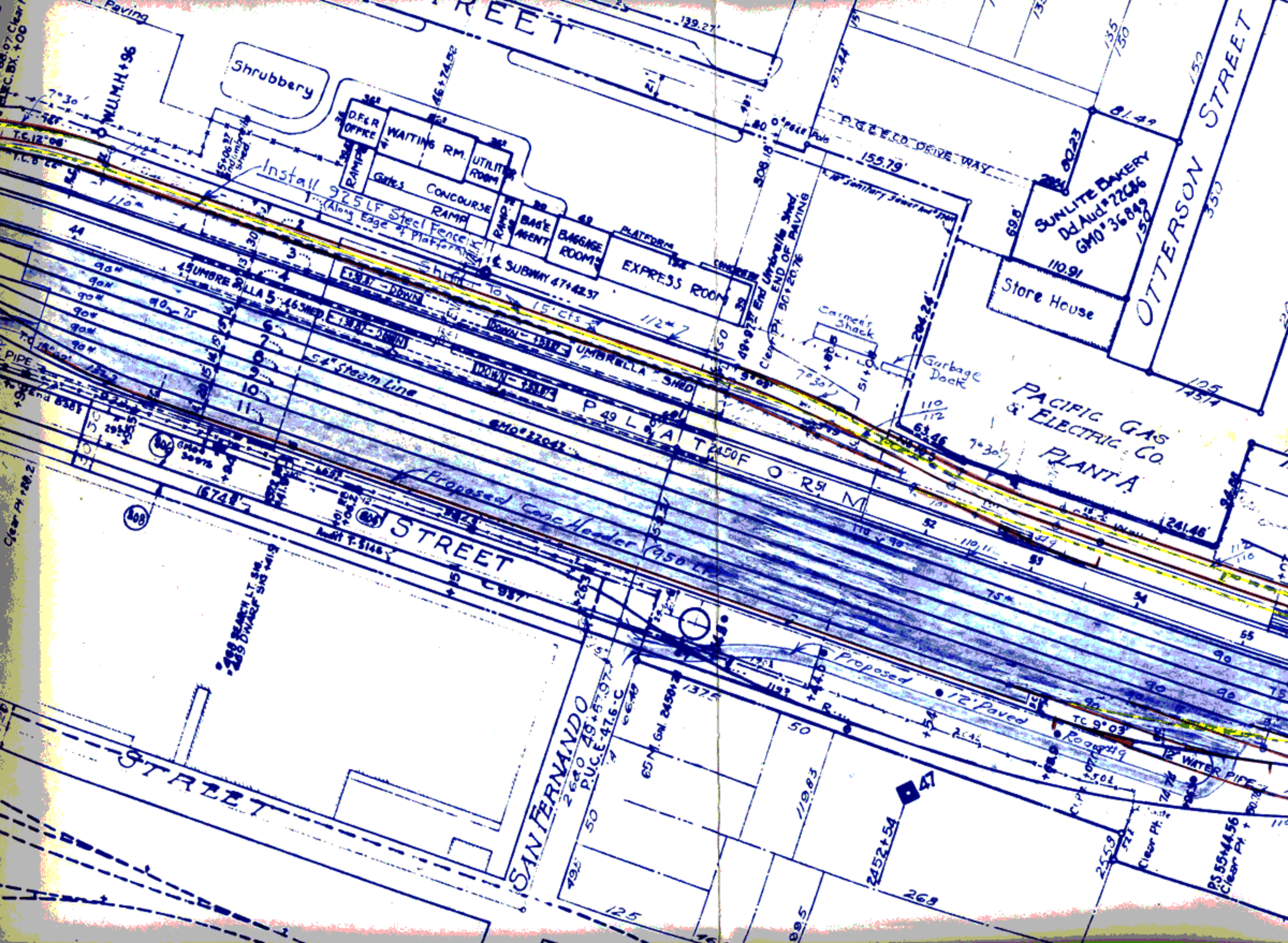
J. George Distr.  
Company

C.C.S. 4

SIGNAL BRIDGE 466 + 20.8  
2434 + 42.79 C.C. 8° RT.  
4" Steam Durant Pipe  
Returns Under Ground For







Shrubbery

D.F. & OFFICE  
WAITING RM.  
UTILITY ROOM  
CONCOURSE  
RAMP  
Gates  
BASE AGENT  
BAGGAGE ROOMS  
PLATFORM  
EXPRESS ROOM  
SUBWAY 47+42.37

Install 925 LF Steel Fence  
(Along Edge of Platform)

SUNLITE BAKERY  
Dd. Aud. #22686  
GMO #36849  
Store House

PACIFIC GAS & ELECTRIC CO.  
PLANT A

STREET

SAN FERNANDO STREET

Proposed Conc. Header (950 LF)

54" Steam Line

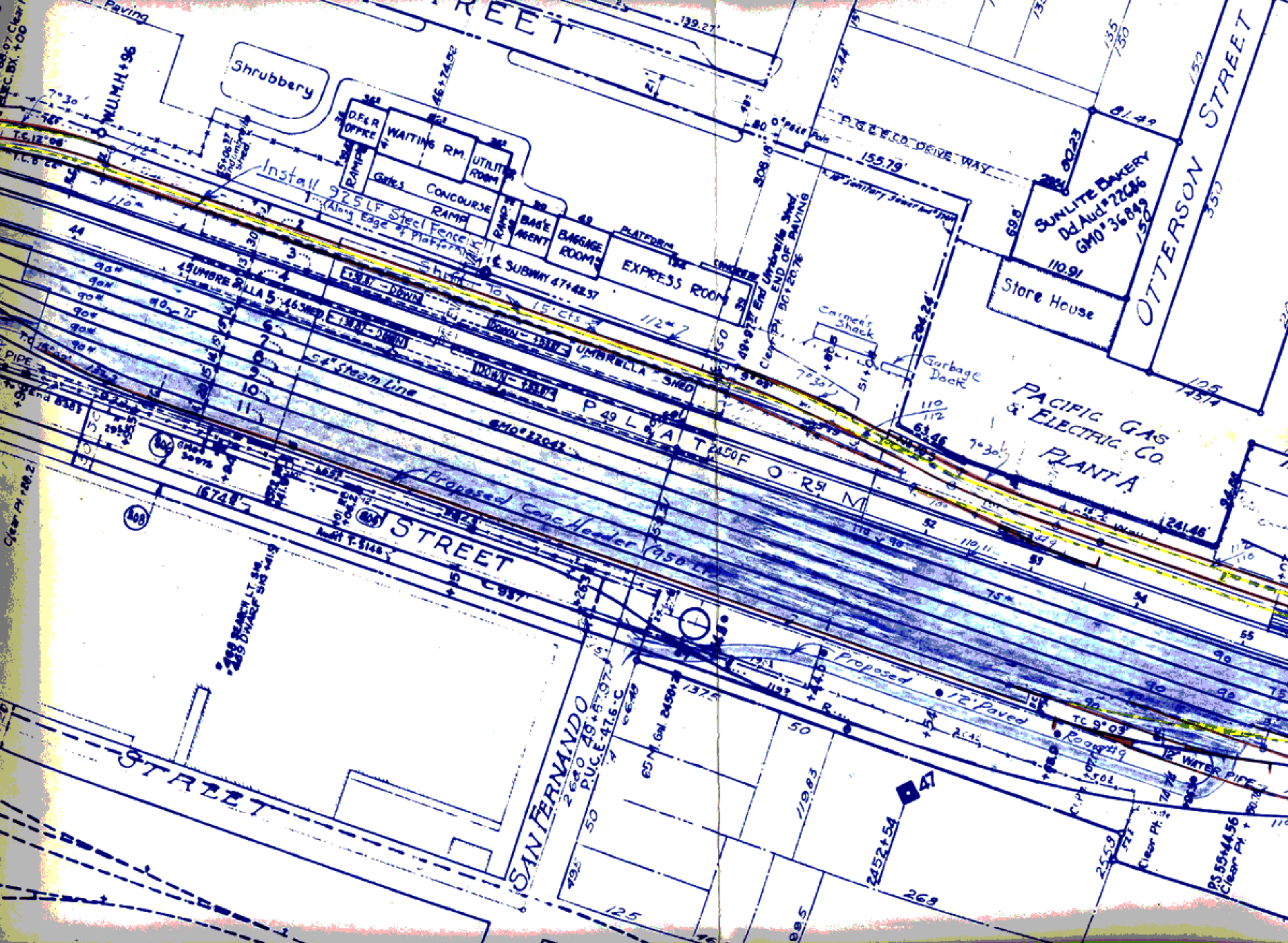
UMBRELLA SHED

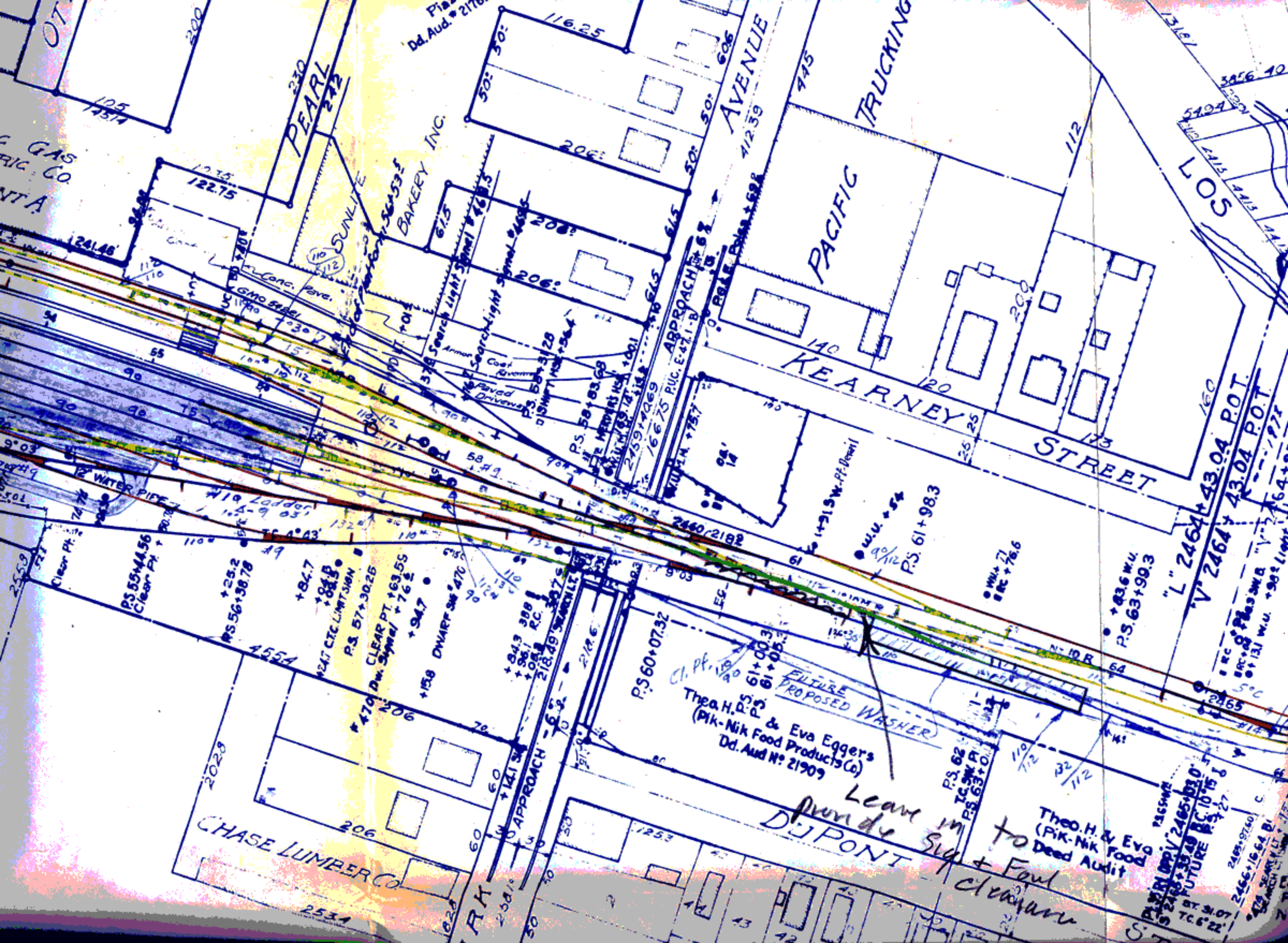
Proposed

12' Paved

12" WATER PIPE

STREET





PEARL  
272

AVENUE  
412.39

KEARNEY  
STREET

PACIFIC  
TRUCKING

LOS

GAS  
CO.

NT A

BAKERY INC.

CHASE LUMBER CO

Theo. H. & Eva Eggers  
(Pik-Nik Food Products Co)  
Dd. Aud N: 21909

Leave in  
DJPONT Sig

Theo. H. & Eva  
(Pik-Nik Food  
Deed Audit

FUTURE  
P.S. 62  
P.S. 63

P.S. 55+44.56  
Clear Pt.

P.S. 56+38.78

+84.7  
+84.8  
+84.9

P.S. 57+30.25  
CLEAR PT. +63.55  
Dw. Signal +76.5

+94.7  
+158 DWART SIG +470

+84.3 388  
+86.1 RC  
218.49 SEARCHLIGHT

P.S. 60+07.32

61+00.3  
61+05.3

P.S. 61+98.3

+43.6 W.U.  
P.S. 63+90.3

"L" 2464+43.04 P.O.T.

"V" 2464+43.04 P.O.T.

12" WATER PIPE

119 Ladder  
114-9 03'

SUNLITE

Searchlight Signal #68.3

Searchlight Signal #68.3

ARMOR  
Cool  
Paved  
Drive

APPROACH

APPROACH

APPROACH

APPROACH

APPROACH

APPROACH

APPROACH

APPROACH

APPROACH

APPROACH

12" WATER PIPE

119 Ladder  
114-9 03'

SUNLITE

Searchlight Signal #68.3

Searchlight Signal #68.3

ARMOR  
Cool  
Paved  
Drive

APPROACH

APPROACH

APPROACH

APPROACH

APPROACH

APPROACH

APPROACH

APPROACH

APPROACH

APPROACH

12" WATER PIPE

119 Ladder  
114-9 03'

SUNLITE

Searchlight Signal #68.3

Searchlight Signal #68.3

ARMOR  
Cool  
Paved  
Drive

APPROACH

APPROACH

APPROACH

APPROACH

APPROACH

APPROACH

APPROACH

APPROACH

APPROACH

APPROACH

12" WATER PIPE

119 Ladder  
114-9 03'

SUNLITE

Searchlight Signal #68.3

Searchlight Signal #68.3

ARMOR  
Cool  
Paved  
Drive

APPROACH

APPROACH

APPROACH

APPROACH

APPROACH

APPROACH

APPROACH

APPROACH

APPROACH

APPROACH

12" WATER PIPE

119 Ladder  
114-9 03'

SUNLITE

Searchlight Signal #68.3

Searchlight Signal #68.3

ARMOR  
Cool  
Paved  
Drive

APPROACH

APPROACH

APPROACH

APPROACH

APPROACH

APPROACH

APPROACH

APPROACH

APPROACH

APPROACH

12" WATER PIPE

119 Ladder  
114-9 03'

SUNLITE

Searchlight Signal #68.3

Searchlight Signal #68.3

ARMOR  
Cool  
Paved  
Drive

APPROACH

APPROACH

APPROACH

APPROACH

APPROACH

APPROACH

APPROACH

APPROACH

APPROACH

APPROACH

12" WATER PIPE

119 Ladder  
114-9 03'

SUNLITE

Searchlight Signal #68.3

Searchlight Signal #68.3

ARMOR  
Cool  
Paved  
Drive

APPROACH

APPROACH

APPROACH

APPROACH

APPROACH

APPROACH

APPROACH

APPROACH

APPROACH

APPROACH

12" WATER PIPE

119 Ladder  
114-9 03'

SUNLITE

Searchlight Signal #68.3

Searchlight Signal #68.3

ARMOR  
Cool  
Paved  
Drive

APPROACH

APPROACH

APPROACH

APPROACH

APPROACH

APPROACH

APPROACH

APPROACH

APPROACH

APPROACH

12" WATER PIPE

119 Ladder  
114-9 03'

SUNLITE

Searchlight Signal #68.3

Searchlight Signal #68.3

ARMOR  
Cool  
Paved  
Drive

APPROACH

APPROACH

APPROACH

APPROACH

APPROACH

APPROACH

APPROACH

APPROACH

APPROACH

APPROACH

12" WATER PIPE

119 Ladder  
114-9 03'

SUNLITE

Searchlight Signal #68.3

Searchlight Signal #68.3

ARMOR  
Cool  
Paved  
Drive

APPROACH

APPROACH

APPROACH

APPROACH

APPROACH

APPROACH

APPROACH

APPROACH

APPROACH

APPROACH

12" WATER PIPE

119 Ladder  
114-9 03'

SUNLITE

Searchlight Signal #68.3

Searchlight Signal #68.3

ARMOR  
Cool  
Paved  
Drive

APPROACH

APPROACH

APPROACH

APPROACH

APPROACH

APPROACH

APPROACH

APPROACH

APPROACH

APPROACH

12" WATER PIPE

119 Ladder  
114-9 03'

SUNLITE

Searchlight Signal #68.3

Searchlight Signal #68.3

ARMOR  
Cool  
Paved  
Drive

APPROACH

APPROACH

APPROACH

APPROACH

APPROACH

APPROACH

APPROACH

APPROACH

APPROACH

APPROACH

12" WATER PIPE

119 Ladder  
114-9 03'

SUNLITE

Searchlight Signal #68.3

Searchlight Signal #68.3

ARMOR  
Cool  
Paved  
Drive

APPROACH

APPROACH

APPROACH

APPROACH

APPROACH

APPROACH

APPROACH

APPROACH

APPROACH

APPROACH

12" WATER PIPE

119 Ladder  
114-9 03'

SUNLITE

Searchlight Signal #68.3

Searchlight Signal #68.3

ARMOR  
Cool  
Paved  
Drive

APPROACH

APPROACH

APPROACH

APPROACH

APPROACH

APPROACH

APPROACH

APPROACH

APPROACH

APPROACH

12" WATER PIPE

119 Ladder  
114-9 03'

SUNLITE

Searchlight Signal #68.3

Searchlight Signal #68.3

ARMOR  
Cool  
Paved  
Drive

APPROACH

APPROACH

APPROACH

APPROACH

APPROACH

APPROACH

APPROACH

APPROACH

APPROACH

APPROACH

12" WATER PIPE

119 Ladder  
114-9 03'

SUNLITE

Searchlight Signal #68.3

Searchlight Signal #68.3

ARMOR  
Cool  
Paved  
Drive

APPROACH

APPROACH

APPROACH

APPROACH

APPROACH

APPROACH

APPROACH

APPROACH

APPROACH

APPROACH

12" WATER PIPE

119 Ladder  
114-9 03'

SUNLITE

Searchlight Signal #68.3

Searchlight Signal #68.3

ARMOR  
Cool  
Paved  
Drive

APPROACH

APPROACH

APPROACH

APPROACH

APPROACH

APPROACH

APPROACH

APPROACH

APPROACH

APPROACH

12" WATER PIPE

119 Ladder  
114-9 03'

SUNLITE

Searchlight Signal #68.3

Searchlight Signal #68.3

ARMOR  
Cool  
Paved  
Drive

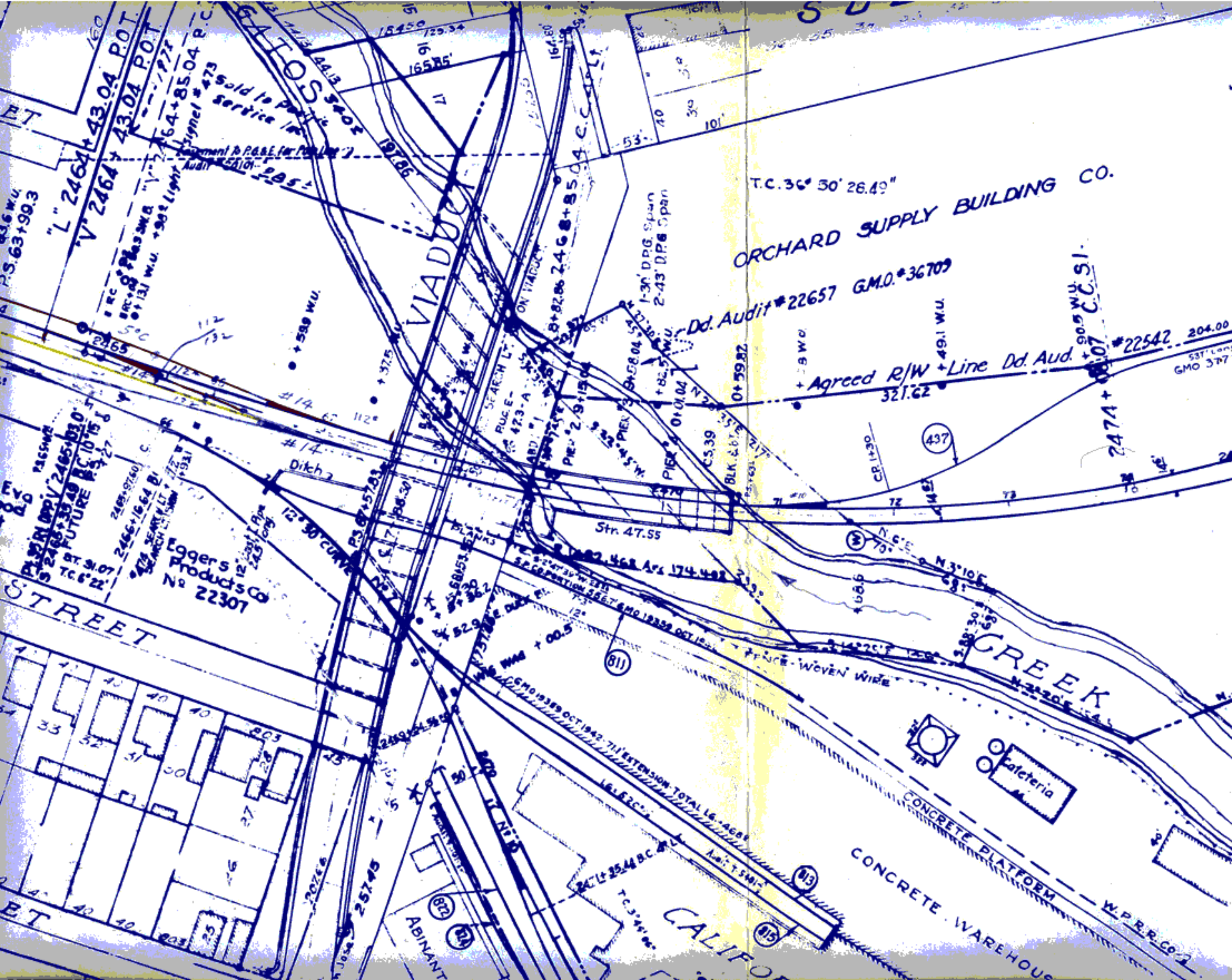
APPROACH

APPROACH

APPROACH

APPROACH

APPRO



VIADUCT

ORCHARD SUPPLY BUILDING CO.

CREEK

CALIFORNIA

STREET

Loggers Products Co  
No 22307

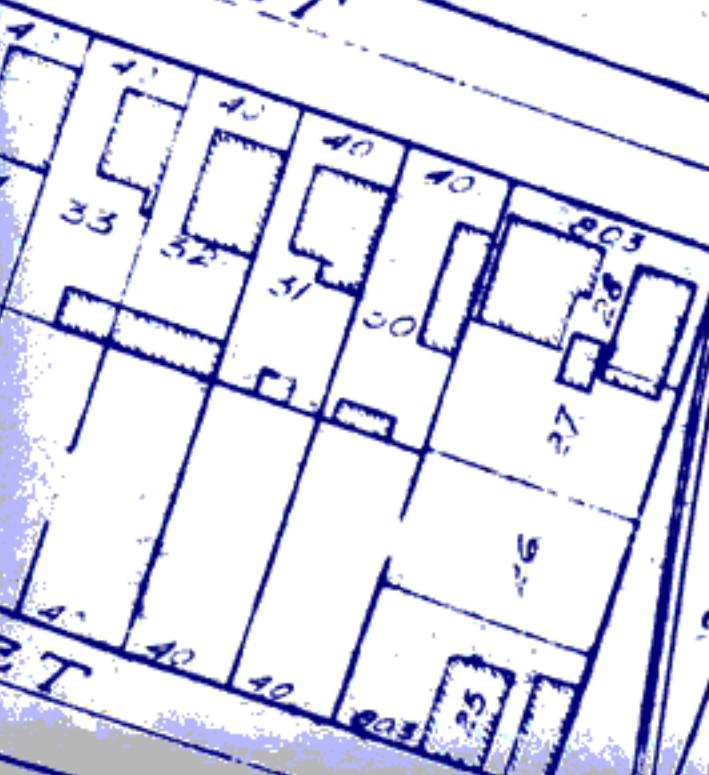
Dd. Audit #22657 G.M.O. #36709

Agreed R/W + Line Dd. Aud. #22542

"L" 2464 + 43.04 P.O.T.  
"V" 2464 + 43.04 P.O.T.

Sold to Pacific  
Service Co

PLANNED  
ST. 91.07  
TC 6' 22"



ABINANT

Cafeteria

CONCRETE PLATFORM

CONCRETE WAREHOUSE

W.P.R.R. CO.

ST

GMO 377

Str. 47.55

Apr 174.492

(811)

(812)

(813)

(815)

(437)

(W)

(813)

(815)

90.5 W.U. S1

49.1 W.U.

37.5 W.U.

59.0 W.U.

82.5 W.U.

82.5 W.U.

82.5 W.U.

82.5 W.U.

82.5 W.U.

82.5 W.U.

82.5 W.U.

82.5 W.U.

82.5 W.U.

82.5 W.U.

82.5 W.U.

82.5 W.U.

82.5 W.U.

82.5 W.U.

82.5 W.U.

82.5 W.U.

82.5 W.U.

82.5 W.U.

82.5 W.U.

82.5 W.U.

82.5 W.U.

82.5 W.U.

82.5 W.U.

82.5 W.U.

82.5 W.U.

82.5 W.U.

82.5 W.U.

82.5 W.U.

82.5 W.U.

82.5 W.U.

82.5 W.U.

82.5 W.U.

82.5 W.U.

82.5 W.U.

82.5 W.U.

82.5 W.U.

82.5 W.U.

82.5 W.U.

82.5 W.U.

82.5 W.U.

82.5 W.U.

82.5 W.U.

82.5 W.U.

82.5 W.U.

82.5 W.U.

82.5 W.U.

82.5 W.U.

82.5 W.U.

82.5 W.U.

82.5 W.U.

82.5 W.U.

82.5 W.U.

82.5 W.U.

82.5 W.U.

82.5 W.U.

82.5 W.U.

82.5 W.U.

82.5 W.U.

82.5 W.U.

82.5 W.U.

82.5 W.U.

82.5 W.U.

82.5 W.U.

82.5 W.U.

82.5 W.U.

82.5 W.U.

82.5 W.U.

82.5 W.U.

82.5 W.U.

82.5 W.U.

82.5 W.U.

82.5 W.U.

82.5 W.U.

82.5 W.U.

82.5 W.U.

82.5 W.U.

82.5 W.U.

82.5 W.U.

82.5 W.U.

82.5 W.U.

82.5 W.U.

82.5 W.U.

82.5 W.U.

82.5 W.U.

82.5 W.U.

82.5 W.U.

82.5 W.U.

82.5 W.U.

82.5 W.U.

82.5 W.U.

82.5 W.U.

82.5 W.U.

82.5 W.U.

82.5 W.U.

82.5 W.U.

82.5 W.U.

82.5 W.U.

82.5 W.U.

82.5 W.U.

82.5 W.U.

82.5 W.U.

82.5 W.U.

82.5 W.U.

82.5 W.U.

82.5 W.U.

82.5 W.U.

82.5 W.U.

82.5 W.U.

82.5 W.U.

82.5 W.U.

82.5 W.U.

82.5 W.U.

82.5 W.U.

82.5 W.U.

82.5 W.U.

82.5 W.U.

82.5 W.U.

82.5 W.U.

82.5 W.U.

82.5 W.U.

82.5 W.U.

82.5 W.U.

82.5 W.U.

82.5 W.U.

82.5 W.U.

82.5 W.U.

82.5 W.U.

82.5 W.U.

82.5 W.U.

82.5 W.U.

82.5 W.U.

82.5 W.U.

82.5 W.U.

82.5 W.U.

82.5 W.U.

82.5 W.U.

82.5 W.U.

82.5 W.U.

82.5 W.U.



S  
STREET  
40 40 40 40  
20 23 24 25 26 27 28 29 30

STREET

N  
30

SAN JOSE HARDWARE CO.  
Deed Audit #22528 GMO#34203

CLOVER LEAF

STREET

DRAKE

TRACT

LOS ANGELES  
No 20 R

FENCE

ALZERRAIS

3905

2705

407 YIPIG SIGN

323.97

2478+06.07 E.C.

2477+06.07 C.C.SI.

#22542

204.00

93.5 W.U.

637' Long  
GMO 37715

288+36  
RC +411.

THL 36. + 35.6  
Gates with Flashing  
inals (Doc. #103983)

271.0

PUC. E-47-15

2476+28.46

176.25

155'  
BOARD

P.S. 2481+05.28

XING PLANKS 60 FT Lg. 9. 60'

3852

3852

3852

3852

3852

3852

3852

3852

3852

3852

3852

3852

3852

3852

3852

3852

3852

3852

3852

3852

3852

1535

15400

42.61

42.61

42.61

42.61

42.61

42.61

42.61

42.61

42.61

42.61

42.61

42.61

42.61

42.61

42.61

42.61

42.61

42.61

42.61

135

135

135

135

135

135

135

135

135

135

135

135

135

135

135

135

135

135

135

135

135

135

135

135

135

135

135

135

135

135

135

135

135

135

135

135

135

135

135

135

135

135

135

135

135

135

135

135

135

135

135

135

135

135

135

135

135

135

135

135

135

135

135

135

135

135

135

135

135

135

135

135

135

135

135

135

135

135

135

135

135

135

135

135

135

135

135

135

135

135

135

135

135

135

135

135

135

135

135

135

135

135

135

135

135

135

135

135

135

135

135

135

135

135

135

135

135

135

135

135

135

135

135

135

135

135

135

135

135

135

135

135

135

135

135

135

135

135

135

135

135

135

135

135

135

135

135

135

135

135

135

135

135

135

135

135

135

135

135

135

135

135

135

135

135

135

135

135

135

135

135

135

135

135

135

135

135

135

135

135

135

135

135

135

135

135

135

135

135

135

135

135

135

135

135

135

135

135

135

135

135

135

135

135

135

135

135

135

135

135

135

135

135

135

135

135

135

135

135

135

135

135

135

135

135

135

135

135

135

135

135

135

135

135

135

135

135

135

135

135

135

135

135

135

135

135

135

135

135

135

135

135

RY  
699.45

COTTAGE LANE

H.S. Chase Property

BARNARD BROS.

SOMERS, O'NEAR & STEPHENS

E.B. Pray  
Dead End # 21932

To SAN FRANCISCO

UNION ICE CO.

RICHMOND, CHASE CO.  
Plant # 15

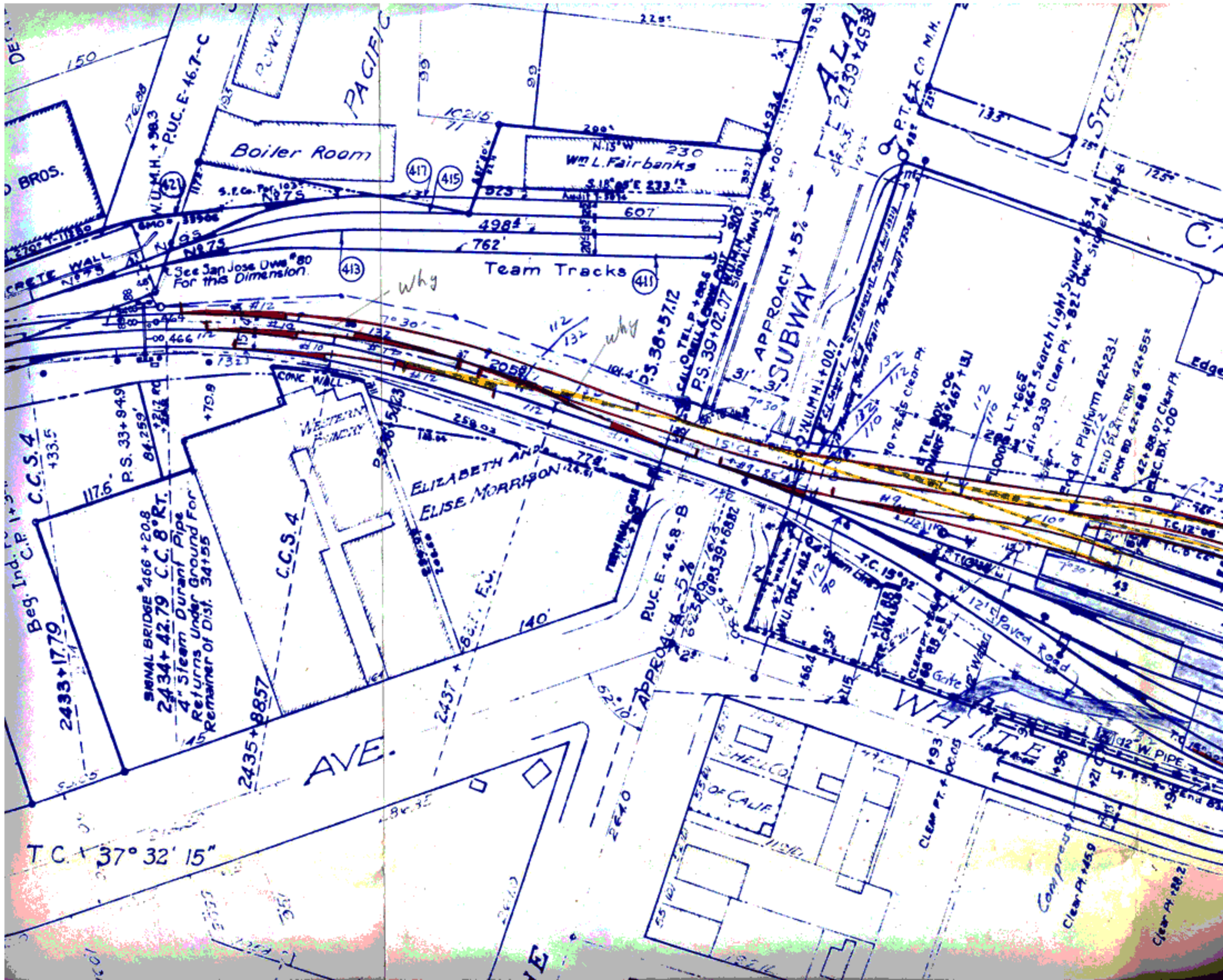
J. George Distr. Company

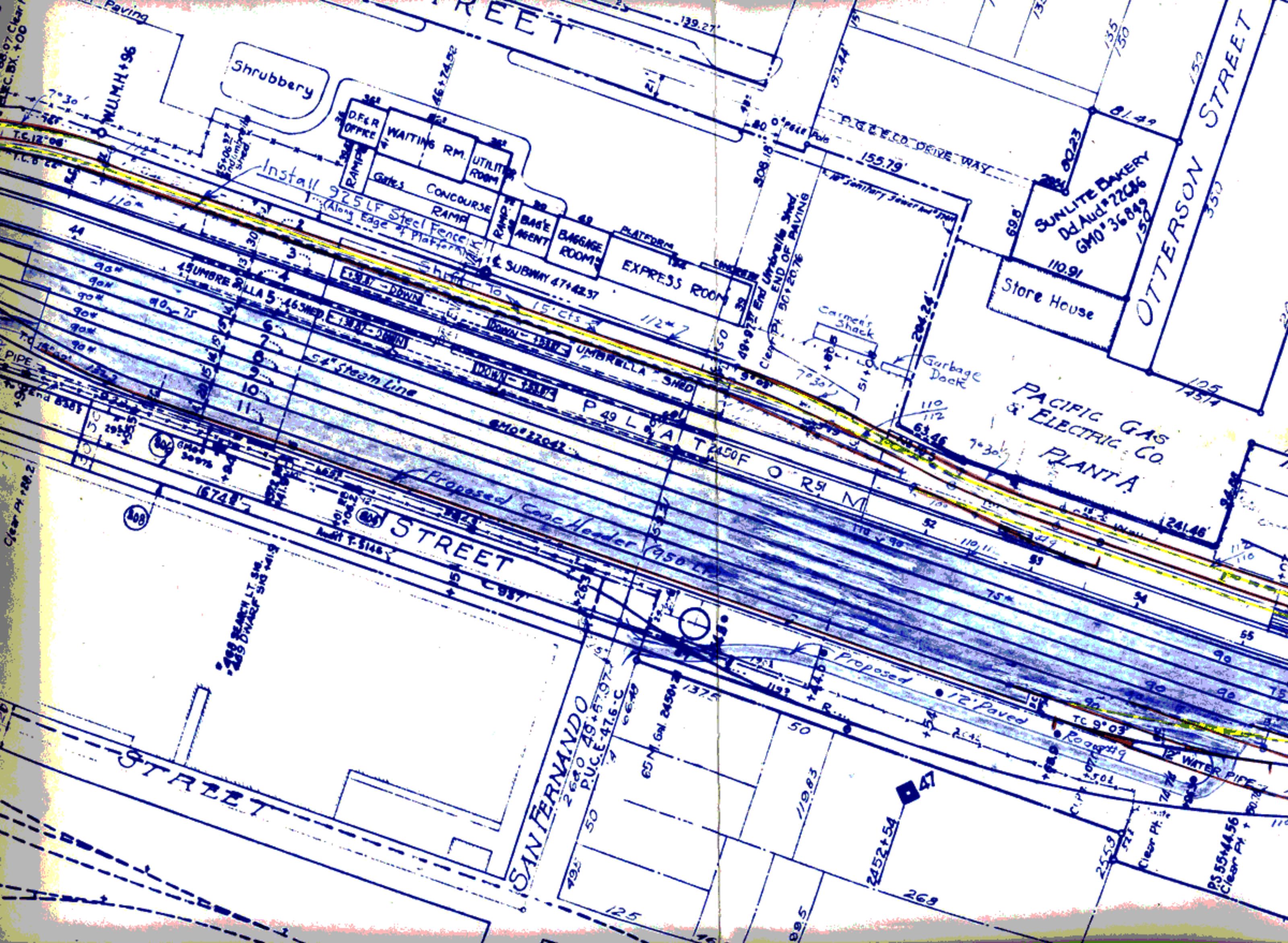
C.C.S. 4

SIGNAL BRIDGE # 466 + 20.8  
2434 + 42.79 C.C. 8° RT.  
4" Steam Durant Pipe  
Returns Under Ground For









Shrubbery

Install 925 LF Steel Fence (Along Edge of Platform)

SUNLITE BAKERY  
Dd. Aud. #22686  
GMO #36849

Store House

PACIFIC GAS & ELECTRIC CO.  
PLANT A

STREET

SAN FERNANDO STREET

STREET

Paving  
W.M.H. +96

44	96"	15 UMBRE
45	90"	15 UMBRE
46	90"	15 UMBRE
47	90"	15 UMBRE
48	90"	15 UMBRE
49	90"	15 UMBRE
50	90"	15 UMBRE
51	90"	15 UMBRE
52	90"	15 UMBRE
53	90"	15 UMBRE
54	90"	15 UMBRE
55	90"	15 UMBRE
56	90"	15 UMBRE
57	90"	15 UMBRE
58	90"	15 UMBRE
59	90"	15 UMBRE
60	90"	15 UMBRE
61	90"	15 UMBRE
62	90"	15 UMBRE
63	90"	15 UMBRE
64	90"	15 UMBRE
65	90"	15 UMBRE
66	90"	15 UMBRE
67	90"	15 UMBRE
68	90"	15 UMBRE
69	90"	15 UMBRE
70	90"	15 UMBRE
71	90"	15 UMBRE
72	90"	15 UMBRE
73	90"	15 UMBRE
74	90"	15 UMBRE
75	90"	15 UMBRE
76	90"	15 UMBRE
77	90"	15 UMBRE
78	90"	15 UMBRE
79	90"	15 UMBRE
80	90"	15 UMBRE
81	90"	15 UMBRE
82	90"	15 UMBRE
83	90"	15 UMBRE
84	90"	15 UMBRE
85	90"	15 UMBRE
86	90"	15 UMBRE
87	90"	15 UMBRE
88	90"	15 UMBRE
89	90"	15 UMBRE
90	90"	15 UMBRE
91	90"	15 UMBRE
92	90"	15 UMBRE
93	90"	15 UMBRE
94	90"	15 UMBRE
95	90"	15 UMBRE
96	90"	15 UMBRE
97	90"	15 UMBRE
98	90"	15 UMBRE
99	90"	15 UMBRE
100	90"	15 UMBRE

Clear Pt. 180.2

200 SEARCH L.T. SH. 200 DWARF SIG. 141.9

Proposed Conc. Header (950 LF)

Proposed

12" Paved

TC 9'03"

12" WATER PIPE

2680 49+57.97  
P.U.C.E. 47.6-C

65 M. G.M. 2450+2

50

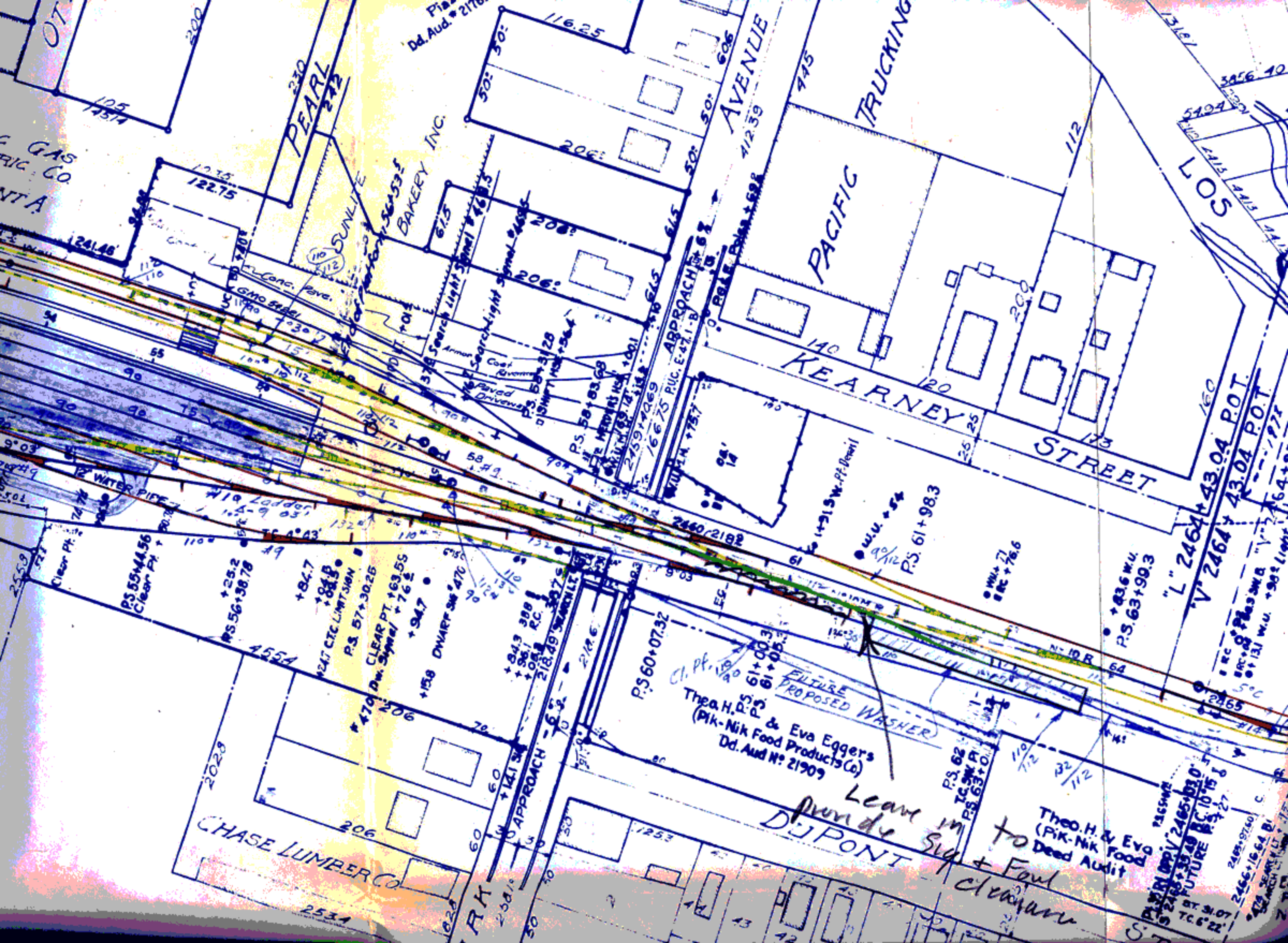
119.83

2452+54

268

Clear Pt. 76

PS 55444.56  
Clear Pt. 180.2



GAS  
RIC CO.  
NT A

PEARL  
272

SUNLITE  
BAKERY INC.

AVENUE  
412.39

TRUCKING

PACIFIC

KEARNEY  
STREET

STREET

LOS

Theo. H. & Eva Eggers  
(Pik-Nik Food Products Co)  
Dd. Aud N: 21909

Leave in place of Sign + Foul Clearing  
DJPONT

Theo. H. & Eva Eggers  
(Pik-Nik Food Products Co)  
Dd. Aud N: 21909

FUTURE PROPOSED WASHER

125  
14574

1235  
122.75

126.48

110  
110

90  
90

75  
75

110  
110

110  
110

110  
110

110  
110

110  
110

110  
110

50: 30:

116.25

50: 30:

50: 30:

606

745

50: 30:

50: 30:

50: 30:

112

112

112

112

54.94

3456.40

4415

4415

4415

4415

4415

4415

4415

4415

4415

4415

4415

4415

4415

4415

4415

4415

4415

4415

4415

4415

4415

4415

4415

4415

4415

4415

4415

4415

4415

4415

4415

4415

4415

4415

4415

4415

4415

4415

4415

4415

4415

4415

9° 03'

12" WATER PIPE

Clear Pt. 24.7

PS 55+44.56  
Clear Pt. 24.7

PS 56+38.78

PS 57+30.26

PS 58+23.68

PS 55+44.56  
Clear Pt. 24.7

PS 56+38.78

PS 57+30.26

PS 58+23.68

PS 59+17.10

PS 60+10.52

PS 61+03.94

PS 62+07.36

PS 63+10.78

PS 64+14.20

PS 65+17.62

PS 66+21.04

PS 67+24.46

PS 68+27.88

PS 69+31.30

PS 70+34.72

PS 71+38.14

PS 72+41.56

PS 55+44.56  
Clear Pt. 24.7

PS 56+38.78

PS 57+30.26

PS 58+23.68

PS 59+17.10

PS 60+10.52

PS 61+03.94

PS 62+07.36

PS 63+10.78

PS 64+14.20

PS 65+17.62

PS 66+21.04

PS 67+24.46

PS 68+27.88

PS 69+31.30

PS 70+34.72

PS 71+38.14

PS 72+41.56

PS 55+44.56  
Clear Pt. 24.7

PS 56+38.78

PS 57+30.26

PS 58+23.68

PS 59+17.10

PS 60+10.52

PS 61+03.94

PS 62+07.36

PS 63+10.78

PS 64+14.20

PS 65+17.62

PS 66+21.04

PS 67+24.46

PS 68+27.88

PS 69+31.30

PS 70+34.72

PS 71+38.14

PS 72+41.56

PS 55+44.56  
Clear Pt. 24.7

PS 56+38.78

PS 57+30.26

PS 58+23.68

PS 59+17.10

PS 60+10.52

PS 61+03.94

PS 62+07.36

PS 63+10.78

PS 64+14.20

PS 65+17.62

PS 66+21.04

PS 67+24.46

PS 68+27.88

PS 69+31.30

PS 70+34.72

PS 71+38.14

PS 72+41.56

PS 55+44.56  
Clear Pt. 24.7

PS 56+38.78

PS 57+30.26

PS 58+23.68

PS 59+17.10

PS 60+10.52

PS 61+03.94

PS 62+07.36

PS 63+10.78

PS 64+14.20

PS 65+17.62

PS 66+21.04

PS 67+24.46

PS 68+27.88

PS 69+31.30

PS 70+34.72

PS 71+38.14

PS 72+41.56

PS 55+44.56  
Clear Pt. 24.7

PS 56+38.78

PS 57+30.26

PS 58+23.68

PS 59+17.10

PS 60+10.52

PS 61+03.94

PS 62+07.36

PS 63+10.78

PS 64+14.20

PS 65+17.62

PS 66+21.04

PS 67+24.46

PS 68+27.88

PS 69+31.30

PS 70+34.72

PS 71+38.14

PS 72+41.56

PS 55+44.56  
Clear Pt. 24.7

PS 56+38.78

PS 57+30.26

PS 58+23.68

PS 59+17.10

PS 60+10.52

PS 61+03.94

PS 62+07.36

PS 63+10.78

PS 64+14.20

PS 65+17.62

PS 66+21.04

PS 67+24.46

PS 68+27.88

PS 69+31.30

PS 70+34.72

PS 71+38.14

PS 72+41.56

PS 55+44.56  
Clear Pt. 24.7

PS 56+38.78

PS 57+30.26

PS 58+23.68

PS 59+17.10

PS 60+10.52

PS 61+03.94

PS 62+07.36

PS 63+10.78

PS 64+14.20

PS 65+17.62

PS 66+21.04

PS 67+24.46

PS 68+27.88

PS 69+31.30

PS 70+34.72

PS 71+38.14

PS 72+41.56

PS 55+44.56  
Clear Pt. 24.7

PS 56+38.78

PS 57+30.26

PS 58+23.68

PS 59+17.10

PS 60+10.52

PS 61+03.94

PS 62+07.36

PS 63+10.78

PS 64+14.20

PS 65+17.62

PS 66+21.04

PS 67+24.46

PS 68+27.88

PS 69+31.30

PS 70+34.72

PS 71+38.14

PS 72+41.56

PS 55+44.56  
Clear Pt. 24.7

PS 56+38.78

PS 57+30.26

PS 58+23.68

PS 59+17.10

PS 60+10.52

PS 61+03.94

PS 62+07.36

PS 63+10.78

PS 64+14.20

PS 65+17.62

PS 66+21.04

PS 67+24.46

PS 68+27.88

PS 69+31.30

PS 70+34.72

PS 71+38.14

PS 72+41.56

PS 55+44.56  
Clear Pt. 24.7

PS 56+38.78

PS 57+30.26

PS 58+23.68

PS 59+17.10

PS 60+10.52

PS 61+03.94

PS 62+07.36

PS 63+10.78

PS 64+14.20

PS 65+17.62

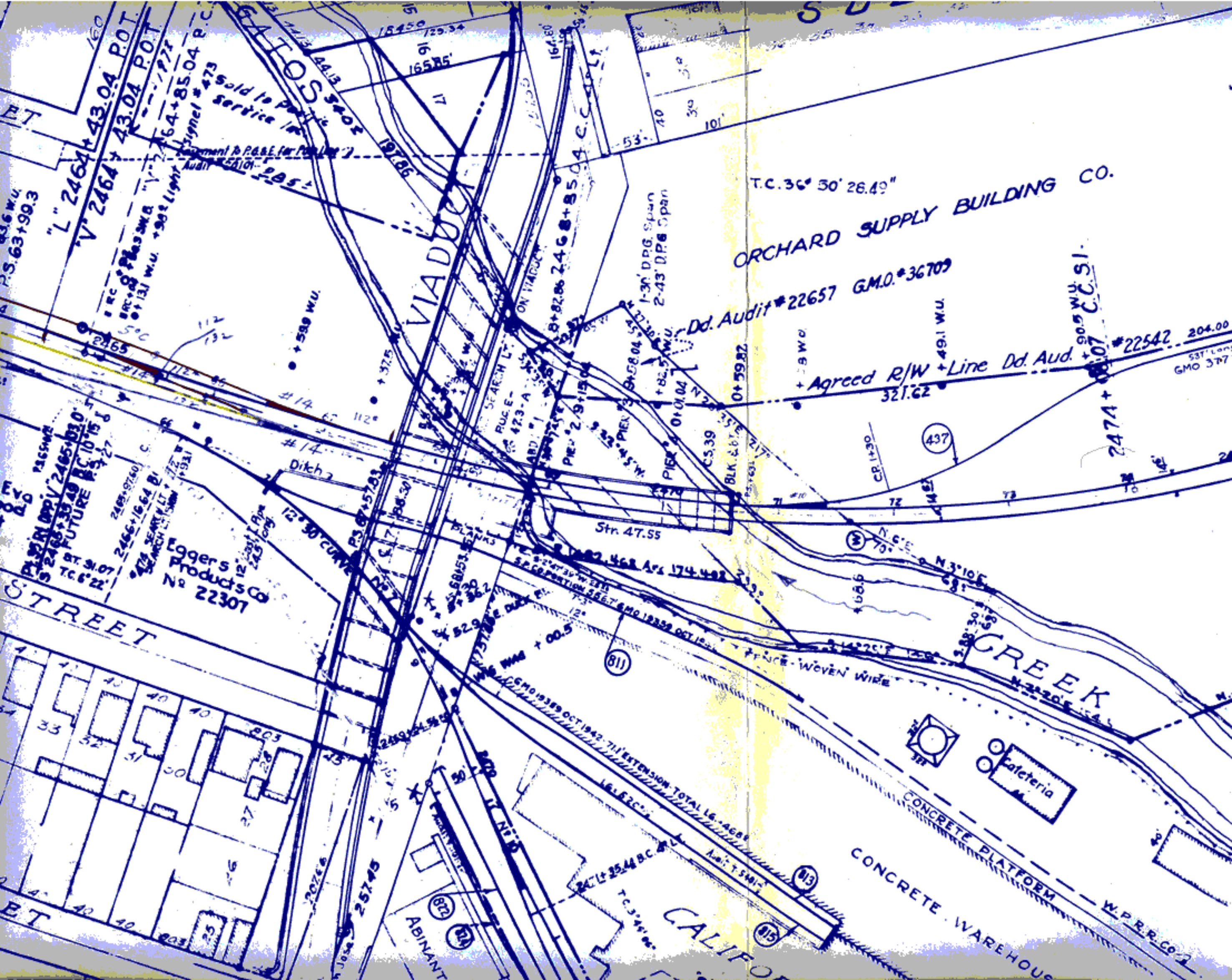
PS 66+21.04

PS 67+24.46

PS 68+27.88

PS 69+31.30

</



VIADUCT

ORCHARD SUPPLY BUILDING CO.

STREET

CREEK

CALIFORNIA

CONCRETE WAREHOUSE

CONCRETE PLATFORM

Cafeteria

Loggers Products Co  
No 22307

FENCE - WOVEN WIRE

Dd. Audit #22657 G.M.O. #36709

Agreed R/W + Line Dd. Aud. #22542

T.C. 36° 50' 26.49"

Str. 47.55

Apr 174.492

(811)

(437)

(W)

(N3)

(N15)

(82)

(84)

ABINANT

P.S. 63+99.3

PL 2465+39.49 BC 10.15  
FUTURE R/W  
T.C. 6° 22'

ET

ET

"L" 2464+43.04 P.O.T.  
"V" 2464+43.04 P.O.T.

500  
112  
132

2465+16.64 B.I.  
SEARCH LIGHT

Ditch

12° 30' CURVE

20766

25745

Sold to Pacific  
Service Co  
Assignment to P.B.E. for P.O.T.  
Audit #56101

580 W.U.  
375 W.U.130' DRG. Span  
2-43' DRG. Span

SEARCH LT.  
RUC. E.  
473-A

PIER #2.9+15.04  
PIER #3.0+10.04

529  
537

16.82C  
16.82C

2471+25.44 B.C.

18450  
91  
129.34  
16585'

19786

ON VIADUCT

8+82.86 2468+85.04 C.C. LT.

164.80

167.80

167.80

167.80

167.80

167.80

167.80

167.80

167.80

167.80

167.80

167.80

167.80

167.80

167.80

167.80

167.80

167.80

167.80

167.80

167.80

167.80

167.80

167.80

167.80

167.80

167.80

167.80

167.80

167.80

167.80

537' Long  
GMO 377

W.P.R.R. Co 2

