

Southern Pacific drawing of trackage from Santa Clara and College Park, 1958

contents

2. east of Newhall Yard throat
3. west of Stockton Ave.
4. Stockton Ave. / College Park station
5. College Park Tower & west leads to C.P. Yard & roundhouse
6. west end of College Park Yard & roundhouse
7. central College Park Yard & roundhouse
8. east College Park Yard & roundhouse
9. Lenzen Ave. Roundhouse & turntable
10. west leg, San Jose Wye
11. east leg, San Jose Wye
12. east end, College Park Yard
13. Guadalupe River
14. west Bassett Street Yard leads
15. Bassett Street freight station
16. pre-1935 passenger station site
17. east leads, Bassett Street yard
18. former Fourth Street Main Line
19. industrial trackage south of Bassett St.

STOCKTON

ST

(Formerly Morris St.)

Sign Santa Clara 1 Mile

Garage 49' 57'

MUTUAL WHOLESALE GROCERY CO. WAREHOUSE

STREET

SHELL OIL CO

Office

Oil Tank Rock 6 Tanks

GMO#46557 T-3254

80' Ext. No GMD T-4303 7-29

GMO#17375 T-9433 CL Pt. to End - 302'

6" C.I. Water Line

13' 15' 14'

SOUTHERN

SOUTH

PACIFIC

PACIFIC

GMO#35023

GMO#35028

GMO#35028

VERMONT

Prop. Post

(LAUREL ST. Closed

Prop. Post

RICHMOND - CHASE CO.

1-37.5' End S.P. Rock

Ind. Par 324'

T-12600 with T-10312  
GMO#28837 Jan 1945

CHASE CANDY CO.

Res No 3020 Oct. 2, 1944 (Ord. Audit No 1174) (65/323-2)

Dirt Bump

783.16

ROCKTON

STREET

HEDDING

AVENUE

UAL WHOLESALE  
ROCERY CO.  
AREHOUSE

SHELL OIL CO

Office

Oil Tank Rack & Tanks

GMO #46567  
97' T-3254

104 T-7102

7' Platform

80' Ext. No GMO  
T-4303 7-'29

GMO #80200 & 80201 Mar. 1929

P.U.C. # E-45.6

SOUTHERN

71 SOUTH

73 PACIFIC

74 PACIFIC

76 RAIL ROAD

79 COAST

75 COMPANY

Ind. Par 324'

GMO #35028

T-12600 with T-10312  
GMO #28837 Jan 1945

CHASE CANDY CO.

Res. No 3020 Oct. 2, 1944  
(Ord. Audit No 1174)

(65/323-2)

70+0360  
P.U.C. # E-45.6

4593

67+243 PS + 70

Final Bridge #455

2380

Slowboard 30.20

Dirt Bump

16" Water Line

Prop. Post

137.5' End S.P. Post

2316

2348

203.25

44.97

39.51

1000

50'

50'

100'

200'

150'

17'

140-372

43.08

11' 8"-th  
Dump

00201 Mar. 192

AVENUE

COLLEGE PARK  
Mi. 45.7

CHEST

San Jose Spruy Mfg. Co.

ASSOCIATED  
Oil Co.

P.U.C. # E-45.65

P.U.C. # E-45.7

ROAD

COAST

66-COMPANY 65

RAILWAY

Gravel Platform

Warehouse  
Covered Platform  
Shop

67+243 P.S. 106

Signal Bridge #455

Slowboard 30:20

College Park Shelter Sheds

60+284 Dwarf Signal

59+9756

47630

1508

612

25035

PACIFIC  
AG

406

610 67919

T. 5254

C.P. to end

#10 L=782

#10 L=802

#10

#10

#10

174

3

64

62

#455

#24

#79

2380

200'

100'

50'

50'

100'

110'

90'

Std. Pl. 62+035

DOO

Water Line

5' DIA. Int.

#10

#10

#10

#10

#10

#10

#10

#10

#10

#10

#10

#10

#10

#10

#10

#10

#10

#10

#10

#10

#10

#10

#10

#10

#10

CHESTNUT

STREET

2394+54.83 End of Dbl. Track - Mile 45.9095

ASSOCIATED OIL CO.

J. D. CHASE

Low Ground

50+52° P.F. #9 MAIN  
0+00° B.C. 5° 30' Lt. LADDER  
+53° B.C. 6° Lt.  
50+19° Δ on Tang.  
46+854

Shop

Water line

L=802 #10

#10 L=782

#10 L=782

L=782 #10

#10 L=782

#14 L=1112

#9

PACIFIC COAST AGGREGATES, INC.

NEHI BOTTLING CO.

GEO. RAGGIO CONCRETE PIPE CO.

SBURY

STOCKTON

55+0202

46481

31+74.41 P.O.T. Signal #456

2393+77.67 9.C.S.-1

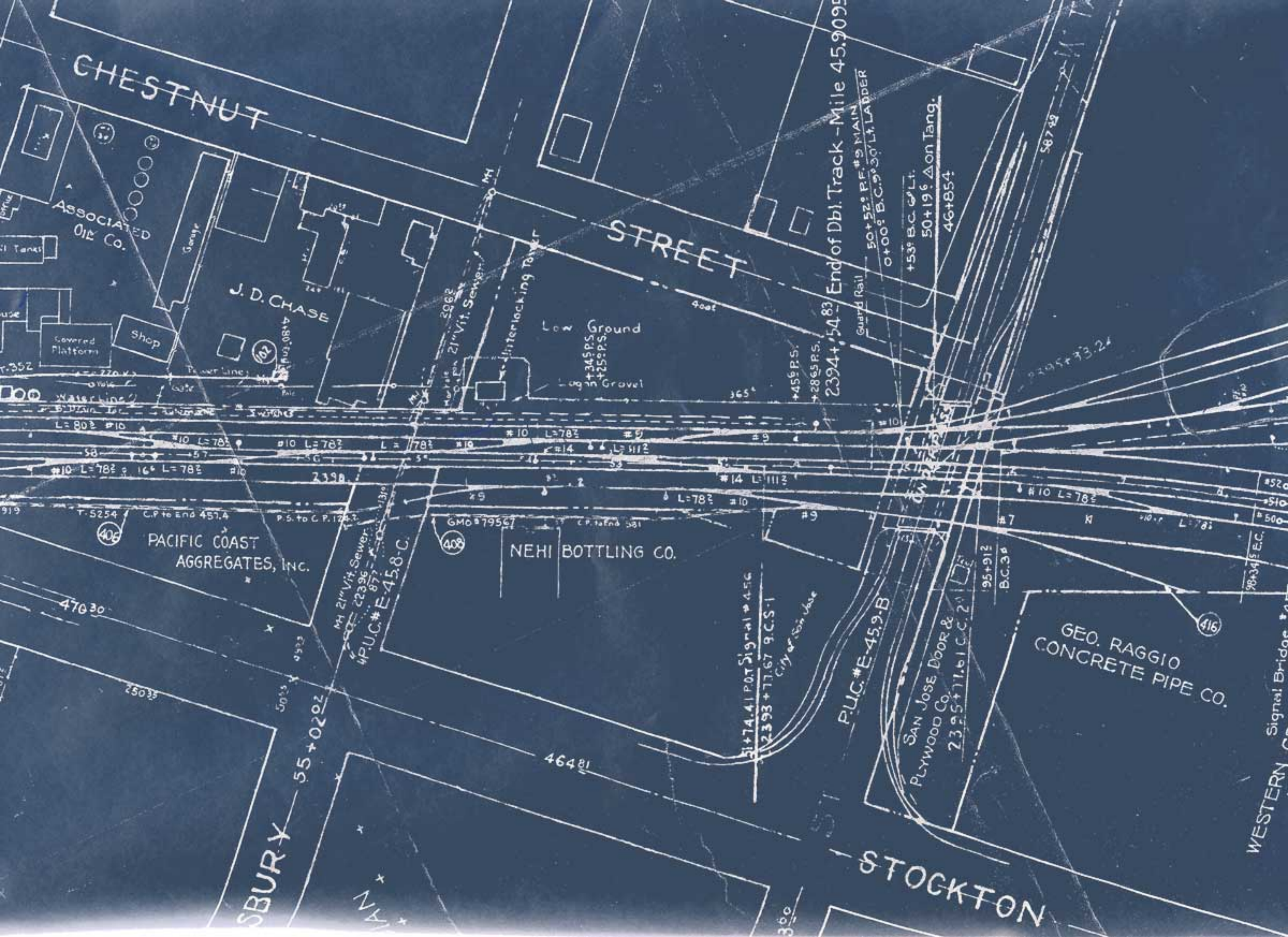
P.U.C.#E-45.9-B

SAN JOSE DOOR & PLYWOOD CO.  
2395+77.61 C.C. 2

95+912

B.C.3#

WESTERN Signal Bridge





345+33.24

587+43

Capacity 43 cars

Yardmaster's House

G.M.O. # 37785

43 Conc Platform

Sw. Pts & Equip. Storage

Repair Pit & House

Rip #3

Wrecker Trk

12° C.

12° C.

12° C.

8 6" C.I. Water Line

No. 7 Outgoing R.H. Track

No. 6 Store Track

No. 5 Ingoing R

No. 4

No. 3 8 Roundhouse Lead

No. 2 Rip #1

432' 2" Overhead Steam Line on

Sand

617

Sw. Pt. Derail  
G.M.O. # 43042

18 18'

2c 17'

①

P.S. to End 12184

G.M.O. # 34494 Lq 244' T-11340

1288 95

G.M.O. # 2151 T-130

Unlo

GEO. RAGGIO  
CONCRETE PIPE CO.

Signal Bridge # 457  
WESTERN GRANITE  
WORKS

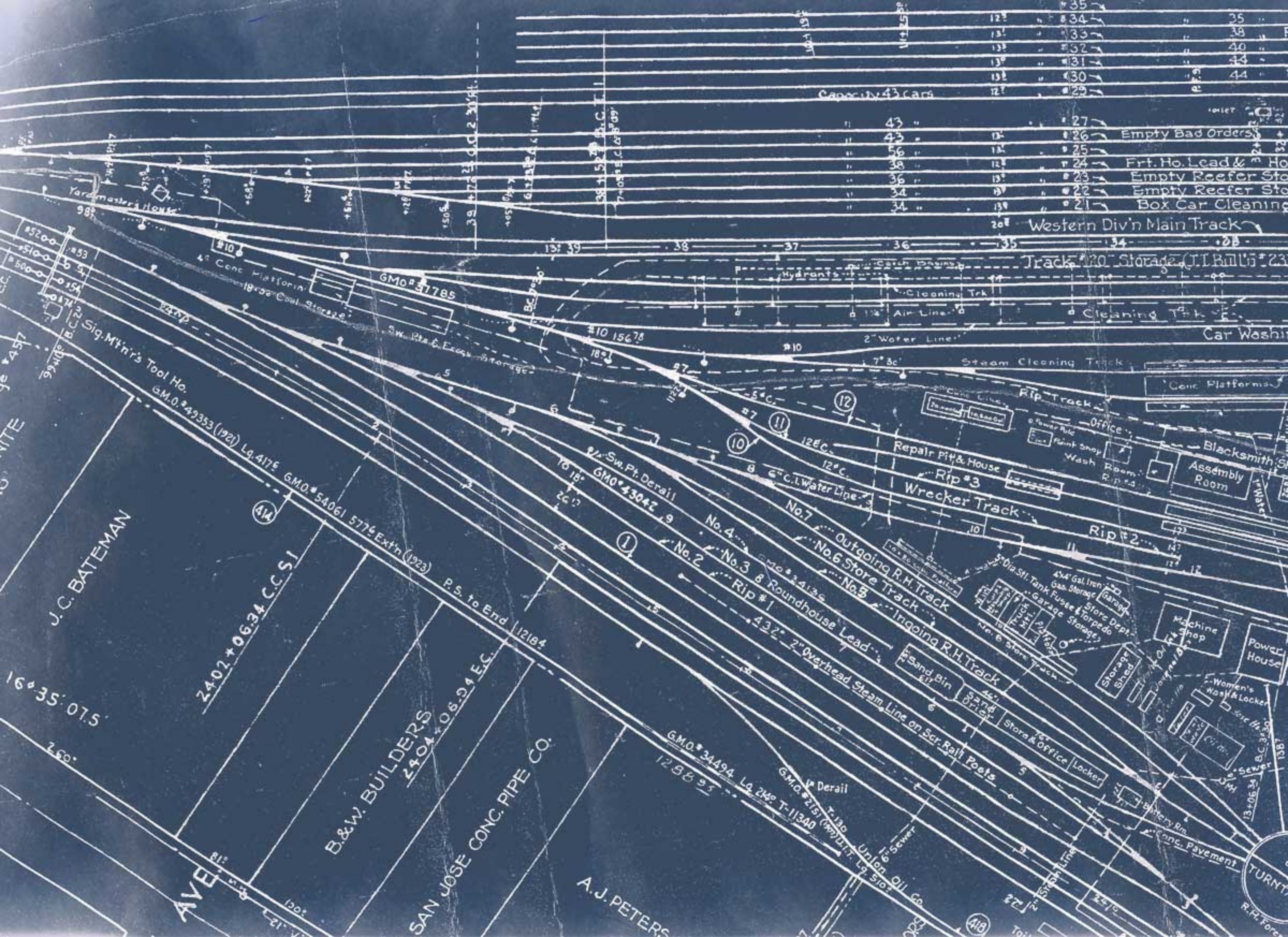
J.C. BATEMAN

02+06.34 C.C.S.I

IRS  
4+06.24 E.C.

CO.





Capacity 43 Cars

12	#34	35
13	#33	38
13	#32	40
13	#31	44
13	#30	44
12	#29	44
11	#27	
11	#26	Empty Bad Orders
12	#25	
12	#24	Fr't. Ho. Lead & H
13	#23	Empty Reefer Sto
13	#22	Empty Reefer Sto
13	#21	Box Car Cleaning
20		Western Div'n Main Track

#5200	#53
#5100	#54
#5000	#55
#4900	#56
#4800	#57
#4700	#58
#4600	#59
#4500	#60
#4400	#61
#4300	#62
#4200	#63
#4100	#64
#4000	#65
#3900	#66
#3800	#67
#3700	#68
#3600	#69
#3500	#70
#3400	#71
#3300	#72
#3200	#73
#3100	#74
#3000	#75
#2900	#76
#2800	#77
#2700	#78
#2600	#79
#2500	#80
#2400	#81
#2300	#82
#2200	#83
#2100	#84
#2000	#85
#1900	#86
#1800	#87
#1700	#88
#1600	#89
#1500	#90
#1400	#91
#1300	#92
#1200	#93
#1100	#94
#1000	#95
#900	#96
#800	#97
#700	#98
#600	#99
#500	#100

J. C. BATEMAN

16° 35' 07.5

260°

AVE

2402+0634 C.C.S.I

B.&W. BUILDERS  
2404+0634 E.C.

SAN JOSE CONC. PIPE CO.

A. J. PETERS

Sig. M'n's Tool Ho.  
G.M.O. #42353 (1921) Lq. 4175

414

G.M.O. #54061 5775 Ext'n (1923)

P.S. to End 12184

Sw. Pt. Derail  
G.M.O. #43042

1

No. 4  
No. 3  
No. 2  
Rip #1

No. 7  
No. 6 Store Track  
No. 5  
Ingoing R.H. Track

Wrecker Track  
Rip #3

Rip #2

4x4 Gal. Iron Gas Storage  
Garage  
Store Dept.  
Torpedo Storage

Machine Shop  
Power House

Women's Wash & Locker  
Sewer

Battery Rm.  
Conc. Pavement

TURN

Yardmaster's House

49 Conc Platform  
18' x 32' Coal Storage

Sw. Pt. & Excav Storage

Sw. Pt. & Excav Storage

Sw. Pt. & Excav Storage

Sw. Pt. & Excav Storage

Sw. Pt. & Excav Storage

Sw. Pt. & Excav Storage

Sw. Pt. & Excav Storage

Hydrants

Cleaning Trk  
2" Water Line  
7" 3c  
Steam Cleaning Track

Cleaning Trk  
Car Wash

Office  
Paint Shop  
Wash Room  
Rip #4

Blacksmith Shop  
Assembly Room

Storage Shed  
Garage  
Store Dept.  
Torpedo Storage

Sw. Pt. & Excav Storage

Sw. Pt. & Excav Storage

Sw. Pt. & Excav Storage

Sw. Pt. & Excav Storage

Sw. Pt. & Excav Storage

Sw. Pt. & Excav Storage

Sw. Pt. & Excav Storage

Sw. Pt. & Excav Storage

Sw. Pt. & Excav Storage

Sw. Pt. & Excav Storage

Sw. Pt. & Excav Storage

Sw. Pt. & Excav Storage

Sw. Pt. & Excav Storage

Sw. Pt. & Excav Storage

Sw. Pt. & Excav Storage

Sw. Pt. & Excav Storage

Sw. Pt. & Excav Storage

Sw. Pt. & Excav Storage

Sw. Pt. & Excav Storage

Sw. Pt. & Excav Storage

Sw. Pt. & Excav Storage

Sw. Pt. & Excav Storage

Sw. Pt. & Excav Storage

Sw. Pt. & Excav Storage

Sw. Pt. & Excav Storage

Sw. Pt. & Excav Storage

Sw. Pt. & Excav Storage

Sw. Pt. & Excav Storage

Sw. Pt. & Excav Storage

Sw. Pt. & Excav Storage

Sw. Pt. & Excav Storage

Sw. Pt. & Excav Storage

Sw. Pt. & Excav Storage

Sw. Pt. & Excav Storage

Sw. Pt. & Excav Storage

Sw. Pt. & Excav Storage

Sw. Pt. & Excav Storage

Sw. Pt. & Excav Storage

Sw. Pt. & Excav Storage

Sw. Pt. & Excav Storage

Sw. Pt. & Excav Storage

Sw. Pt. & Excav Storage

Sw. Pt. & Excav Storage

Sw. Pt. & Excav Storage

Sw. Pt. & Excav Storage

Sw. Pt. & Excav Storage

Sw. Pt. & Excav Storage

Sw. Pt. & Excav Storage

12	#35		
12	#34	"	35 Local Cars
13	#33	"	38 Perishables & Icers
13	#32	"	40 Train Yard
13	#31	"	44 Train Yard
13	#30	"	44 Receiving Track
12	#29	"	

	#27		
12	#26	Empty Bad Orders	Washing & Cleaning Track
13	#25		Storage Track
13	#24	Frnt. Ho. Lead &	House Cars
13	#23	Empty Reefer Storage	
13	#22	Empty Reefer Storage	
13	#21	Box Car Cleaning Track	
20		Western Div'n Main Track	

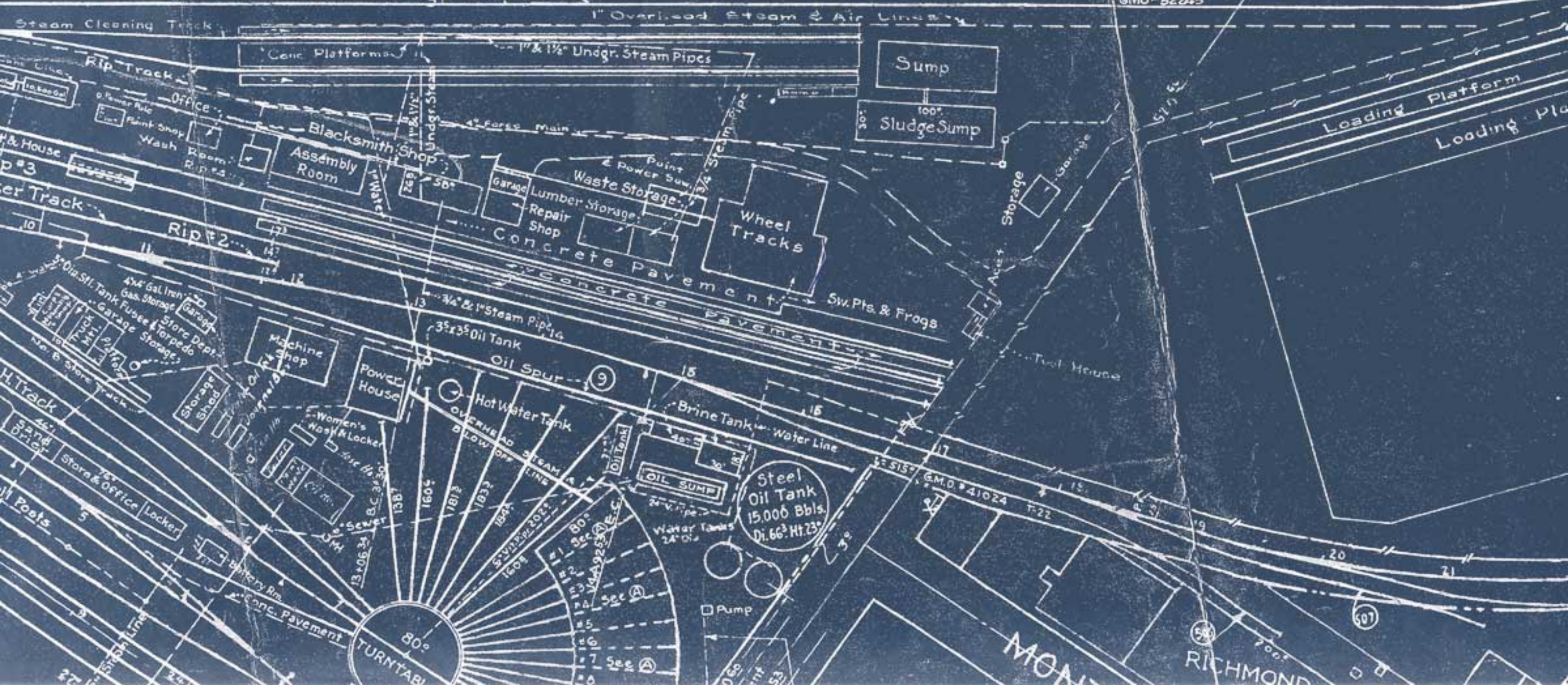
Box Car Cleaning Tracks

Track 20 Storage (T.I. Bull's #23, T.I. #162)

Cleaning Trk.

Car Washing & Scrap Trk.

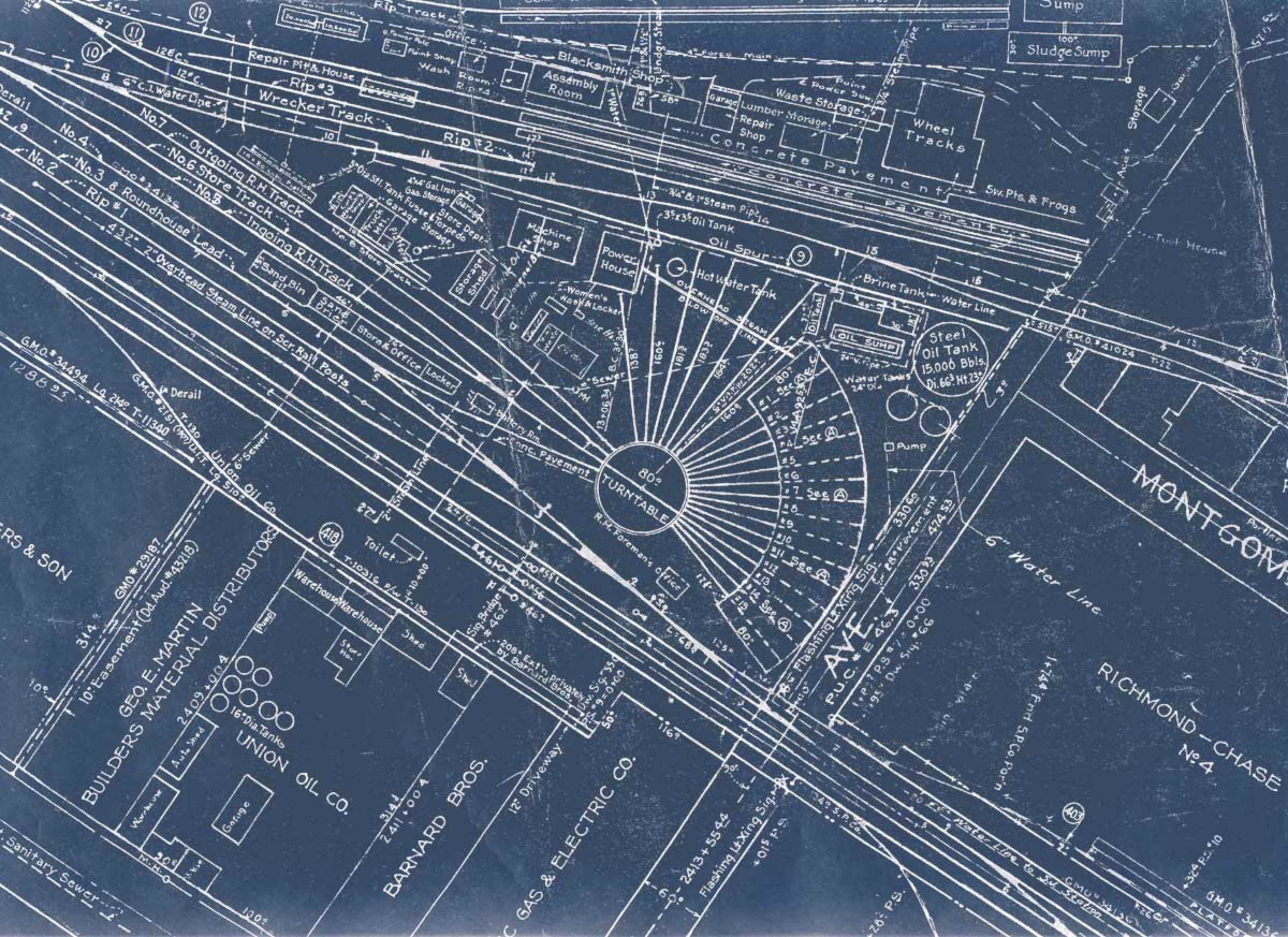
G.M.O. #52245



80° TURNTABLE

MONT... RICHMOND





80°  
TURNABLE  
R.H. Foreman's office

Steel  
Oil Tank  
15,000 Bbls.  
Di. 66' Ht. 23'

MONTGOMERY AVE

RICHMOND - CHASE  
No. 4

PUC AVE

BARNARD BROS.

UNION OIL CO.

GEO. E. MARTIN  
BUILDERS MATERIAL DISTRIBUTORS

FRS & SON

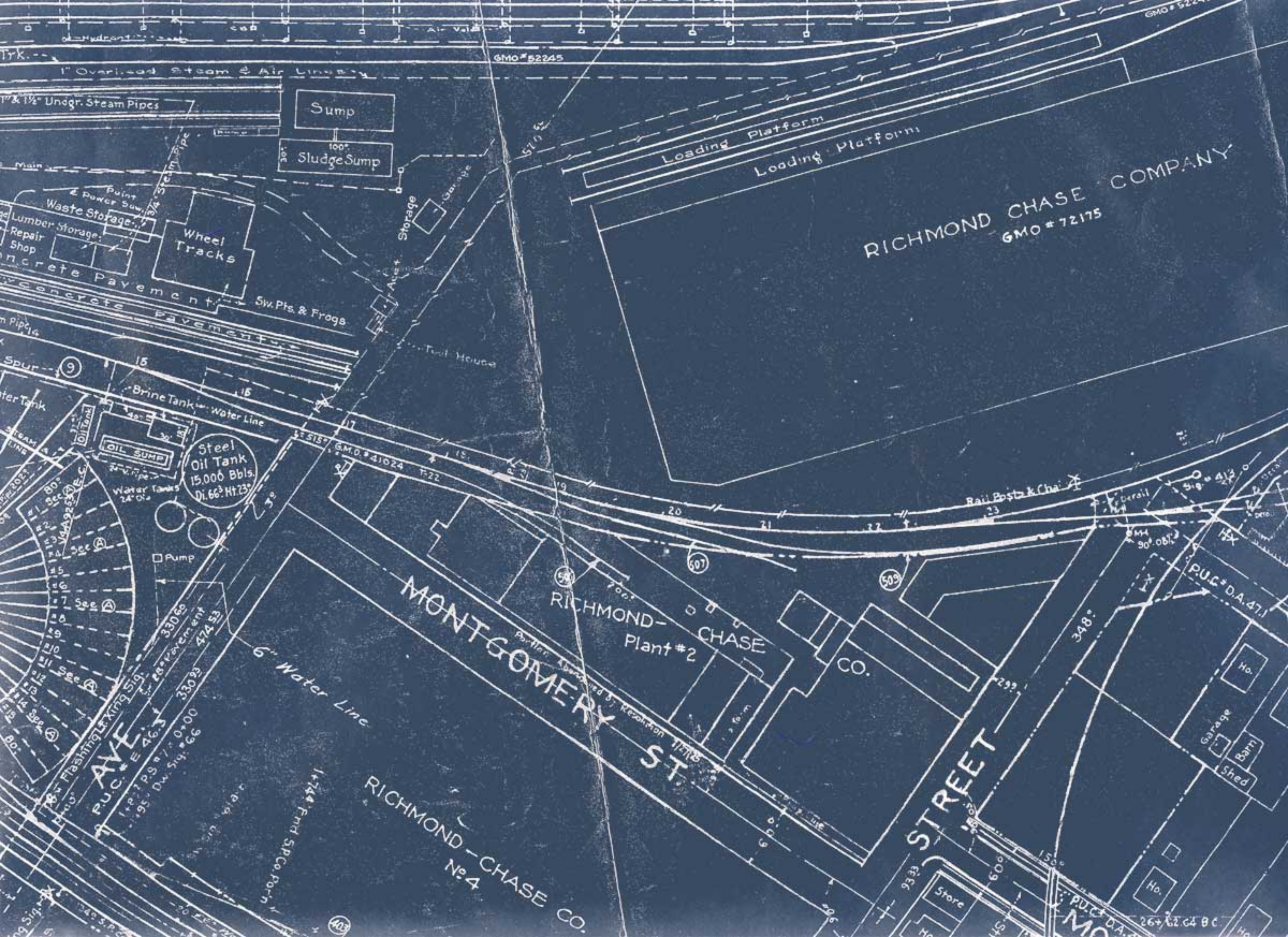
Sanitary Sewer

G.M.O. # 34494  
LA. 248 T-11340  
1288 95

No. 1  
No. 2  
No. 3  
No. 4  
No. 5  
No. 6  
No. 7  
No. 8  
No. 9

1288 95  
1288 95  
1288 95

G.M.O. # 3413  
PLATE



RICHMOND CHASE COMPANY  
G.M.O. # 72175

RICHMOND-CHASE CO.  
Plant #2

MONTGOMERY ST

AVE  
P.U.C. # E 46.3

RICHMOND-CHASE CO.  
No. 4

STREET

P.U.C. # D.A. 47.1  
MO



Steel Oil Tank 15,000 Bbls. Di. 66' Ht. 23'

OIL SUMP

Water Tanks 24' Dia.

Pump

RICHMOND-CHASE CO. Plant #2

MONTGOMERY ST

6" Water Line

RICHMOND-CHASE CO. No 4

STREET

MONTGOMERY

CINNABAR ST

CALIFORNIA PRUNE & APRICOT GROWERS ASSN. No 11

TO LOS ANGELES

PACIFIC GAS & ELECTRIC CO.

AUTHORITY

P.U.C. # 46.3  
1+P. 7 PS # 7-0+00  
1+95' Du. Sig. # 66  
33069  
28' Revm. ent  
33093  
474 53

+20' PS  
+297 PS # 10  
Dwarf Sig. # 62

G.M.O. # 34136  
PLATFORM  
T-11189

G.M.O. # 41024  
T-22

T-8282 F/w T-3008  
Platform G.M.O. # 97590

Store  
Ho.  
Shed  
Ho.

Street Paved (G.M.O. # 41845)  
(Vacated)

ALLEY

21+61' R.S. = 0+00  
E. B. PRAY  
Dd. Aud. # 22150

1+10' B.C. 17' C.  
28+83' B.C. 10'

1+67' C.I. P.

Ho.  
Garage  
Barn  
Shed

Ho.  
Ho.  
Ho.

Ho.  
Ho.

School

Water Line

Rail Post

33069  
28' Revm. ent  
33093  
474 53

1+744' Fnd Sp. Co. Port  
1+744' Fnd Sp. Co. Port

+20' PS  
+297 PS # 10  
Dwarf Sig. # 62

G.M.O. # 34136  
PLATFORM  
T-11189

G.M.O. # 41024  
T-22

T-8282 F/w T-3008  
Platform G.M.O. # 97590

Store  
Ho.  
Shed  
Ho.

Street Paved (G.M.O. # 41845)  
(Vacated)

ALLEY

21+61' R.S. = 0+00  
E. B. PRAY  
Dd. Aud. # 22150

1+10' B.C. 17' C.  
28+83' B.C. 10'

1+67' C.I. P.

Ho.  
Garage  
Barn  
Shed

Ho.  
Ho.  
Ho.

Ho.  
Ho.

School

EMPIRE

Garage

P.M.T. Co. Warehouse

Conc. Plat.

G.M.O. 85131

Cars  
Cles & Icers  
ard  
ard  
ng Track

Box Car Cleaning Tracks

g & Cleaning Track  
Track

b



G.M.O. # 52245

G.M.O. # 52245

1" Overhead Steam & Air Lines

1" & 1 1/2" Undgr. Steam Pipes

Sump

100' Sludge Sump

Waste Storage  
Lumber Storage  
Repair Shop

Wheel Tracks

Concrete Pavement  
Generator

Sw. Pts. & Frogs

Loading Platform  
Loading Platform

RICHMOND CHASE COMPANY  
G.M.O. # 72175



85137

COMPANY

E

STRUCT. #1  
STRUCT. 46.47 (L4.180°)

ROAD WALK  
TRESTLE #2  
STRUCT. 46.47 (L4.193.6°)

TRESTLE #3  
STRUCT. 46.47 (L4.177.6°)

Length Curve 6464  
Struct. 6041 ft Δ 44.53°

TRESTLE #4  
STRUCT. 46.47 (L4.180°)

Creek Tracks  
Round House Tracks  
Fence

HART'S WHSE

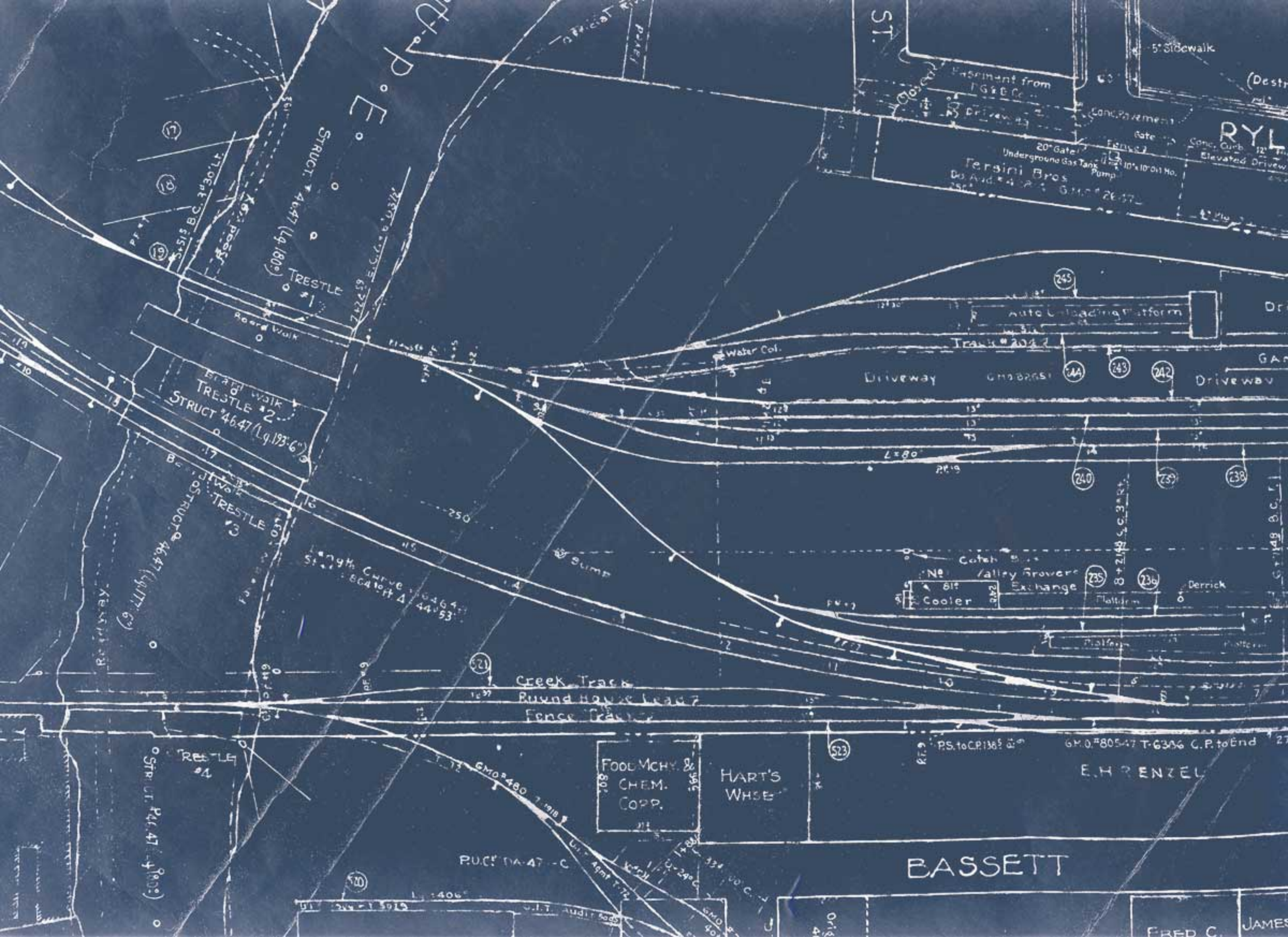
FOOD MCHY. & CHEM. COOP.

FOOD MACHINERY CO.

Dec. 4439 Filed with T-1160

MINING Co.

And...  
Food Machinery Corp.



D.P.O.E.

ST.

RYL

STRUCT #1  
TRESTLE #1  
Length Curve 464.7 (Lq. 180°)

STRUCT #2  
TRESTLE #2  
Length Curve 464.7 (Lq. 193° 6')

STRUCT #3  
TRESTLE #3  
Length Curve 464.7 (Lq. 177° 6')

STRUCT #4  
TRESTLE #4  
Length Curve 464.7 (Lq. 190°)

FOOD MCH. &  
CHEM.  
COPP.

HART'S  
WHSE

BASSETT

E.H. RENZEL

FRED C.

JAMES

# RYLAND

CONC. Pavement ST

Ferrini Bros  
Dd. Aud. # 42329 G.M.O. # 26475

VACANT  
Dd. Aud. # 42329 G.M.O. # 27840

WARREN  
Platform  
Dd. Aud. # 43806 G.M.O. # 35791

DRIED FRUIT  
Lg. 499'

ACME POTATO  
Shed No. 101  
Platform

Auto Unloading Platform

Driveway

Trucks # 2047

GANTRY CRANE

Driveway

G.M.O. # 80251

Driveway

BRUCE STERN

No 105  
LOBUE

Shed # 103

RUSHTON  
(Shed # 109) Owned by S.P.S.  
Platform

G.M.O. # 2971

Cooler  
No. 817

Valley Growers Exchange

Platform

Derrick

Bin Terra Cotta Sewer  
4" Pipe Red Macadam Pavt

FREIGHT

FREIGHT

FREIGHT

PS. to CR 1365  
G.M.O. # 80547 T-6306 C.P. to End 2775

E.H. RENZEL

INDEPENDENT  
PAPER STOCK  
Co.

DOYLE HOME  
FURNISHINGS

JAMES  
TRANSFER

# BASSETT

C. D. HERSEY  
Casual to Bettencourt Markets  
T-12945 with T-907

FRED C. JAMES

JAMES TRANS. & STORAGE Co.

JOHN BEAN

MFG. Co.

BETTENCOURT MARKETS  
FOOD MCHY. & CHEM. CORP.  
(NIAGARA CHEM. DIVN)

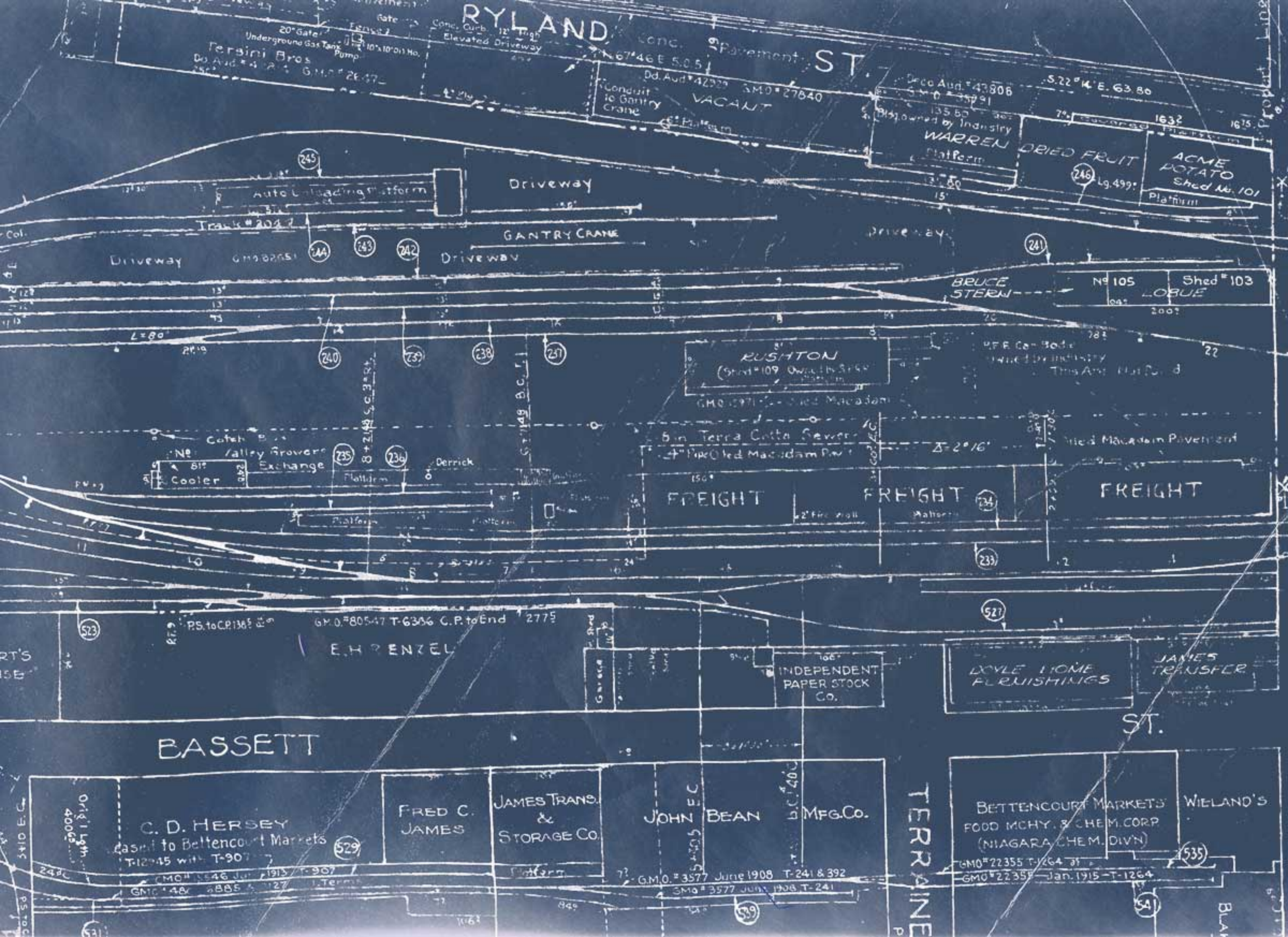
WIELAND'S

# TERRAINE

G.M.O. # 3577 June 1908 T-241 & 392

G.M.O. # 22355 T-1264

G.M.O. # 22355 Jan. 1915 T-1264



RYLAND

PARK

ment. ST.

Deco. Aud. #43806  
 135.50  
 79° measured  
 1632  
 1675  
 S. 22° 14' E. 63.80  
 10° 27' 40"

Dis. owned by Industry  
**WARREN**  
 Platform

DRIED FRUIT  
 (246) Lg. 499'

ACME  
 POTATO  
 Shed No. 101  
 Platform

Property Line 0+00  
0+00  
0+00

City S.P.R.V.  
1+37 C.P.R.R.

9° Ext. G.M.O. #8734 33' E. G.M.O. #91691

Drive Way  
 (241)

BRUCE  
 STERN

No 105  
 LOBUE

Shed # 103

Signal Light  
Flush Light  
Signal

DRIVE WAY

(235)

VACANT  
 Shed No. 104  
 Platform

JAMES  
 TRANSFER  
 Warehouse

May 1911

W.P.F. Car. Code  
 This Am. Plat. d

2° 16'

Macadam Pavement

FREIGHT  
 Platform (234)

FREIGHT

(233)

(527)

SHED # 106  
 G.M.O. # 81269  
 M.W.D. # 5005

LOBUE PACKING CO.

Ice Ho. Platform

SAN  
 BRANT  
 G.M.O. # 81269  
 M.W.D. # 8827

JAMES  
 TRANSFER

G.M.O. # 81269  
 M.W.D. # 8827

Ice Ho. Platform

G.M.O. # 81269  
 M.W.D. # 8827

SAN JOSE POTATO  
 & ONION  
 Shed # 108

(237)

INDEPENDENT  
 PAPER STOCK  
 Co.

DOYLE HOME  
 FURNISHINGS

JAMES  
 TRANSFER

ST.

KEYSTONE COFFEE CO.  
 (H. & E. DAVIS)

KEYSTONE COFFEE CO.  
 (H. & E. DAVIS)

S. 59° 43' W. 632.924

MFG. Co.

BETTENCOURT MARKETS  
 FOOD MCHY. & CHEM. CORP.  
 (NIAGARA CHEM. DIVN)

WIELAND'S

(535)

BASSETT

ST.

OLD

FROY  
 BROS.



K

NORTH

NORTH

NORTH

TRANSFER

(237)

(237)

G.M.O. 61229 MAY 11 1907

31269 200' MWD 8816

JOSE POTATO

ONION

Shed 11-108

9-17-95

W

W

W

W

W

W

W

W

W

W

W

W

W

W

W

W

W

W

W

47

17615

BORCHERS BROS.

U.I. Terms 1907 T-4995 9-10-25

18° Ext. G.M.O. # 69904

T-5505 9-20-26

6" W.I. Water Line

3' x 6' Watchman's Sign

C.P. to End 271's

C.P. to End 272's

G.M.O. # 99840

T-2677 3-8-37

SECURITY WAREHOUSE & COLD STORAGE CO.

P.U.C. # DA-464

FI

Wigwag

SECOND

Westward Track

12+00 B.C. 9 20

12+5143 C.C. 9° 09' C.

G.M.O. # 32811 T-10915  
S.P.C. 162' Ind. 254'  
Total Lq. 416'

BORCHER BROS.

MAYFLOWER

WAREHOUSE

G.M.O. # 3077 T-10915  
C.P. to End 370'

13+67 B.C. 12° 15' C.

15+371 C.C. 6° 34' C.

Δ 20° 46'

Δ 27° 12'

Flashing Light Xing Sig.

Flashing Light Xing Sig.

P.U.C. # DA-464

Signal # 467

17+56 P.S.

Engine & Trolley

CHASE CO.

RICHMOND

Trackage No. 14

741

250

P.S. 429

116

NORTH

NORTH

WAVENILES

47

BORCHERS BROS.

MAYFLOWER WAREHOUSE

CHASE CO.

RICHMOND

U.I. Terms 1907 T-4995 9-10-25  
18° Ext. G.M.O. # 69904  
T-5505 9-20-26

6" WI Water Line  
3" x 6" Watchman's Sentry  
C.P. to End 2715  
C.P. to End 2725

G.M.O. # 99840  
T-2677 3-8-37  
SECURITY WAREHOUSE  
& COLD STORAGE CO.

Westward Track  
12+00 B.C. 9° 20'  
12+51.43 C.C. 9° 09' C.  
P.S. 12+55.9  
G.M.O. # 32811 T-10915  
S.P. Co. 162' Ind. 254'  
Total Lq. 4162'  
BORCHER BROS.

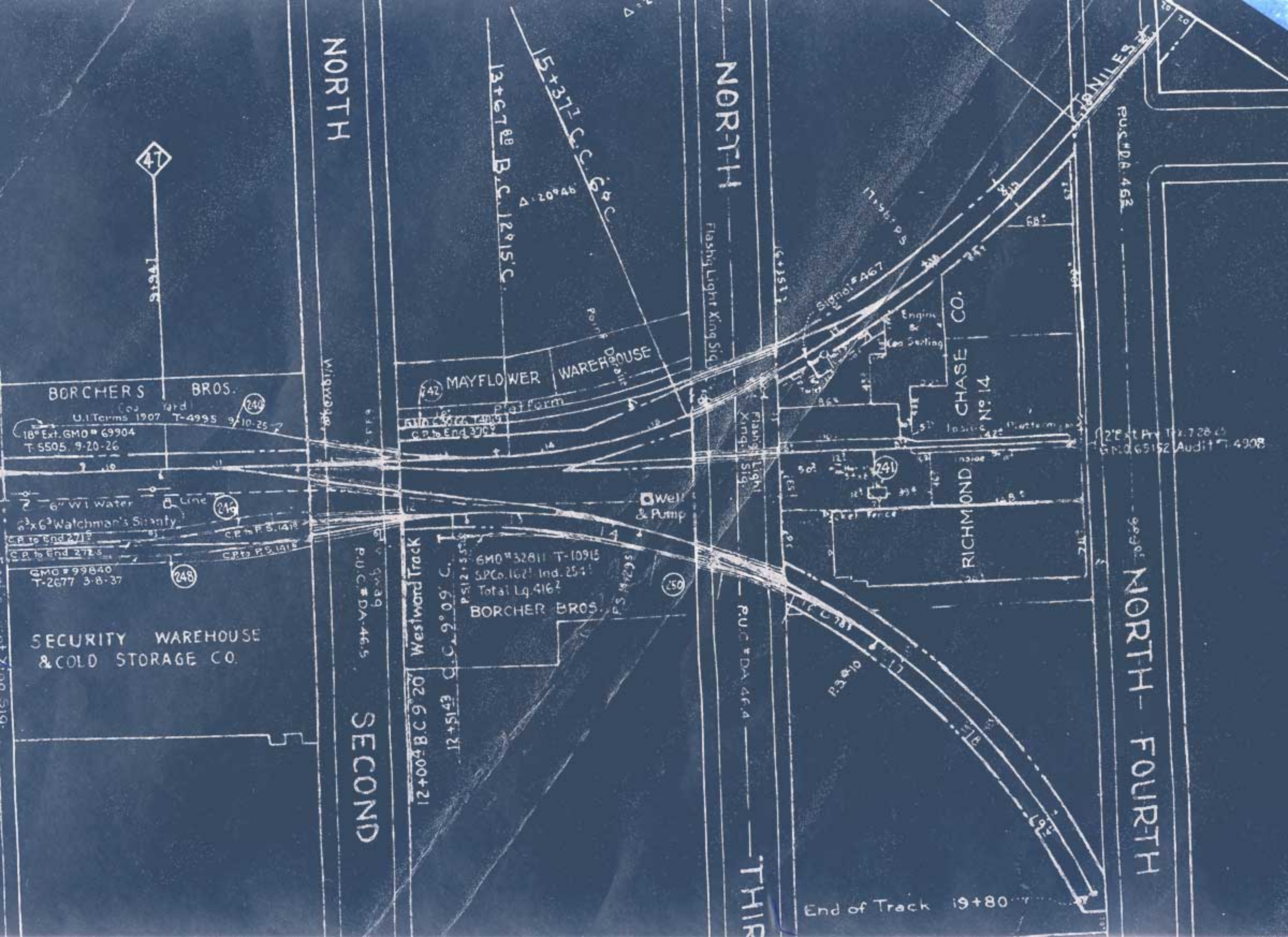
SECOND

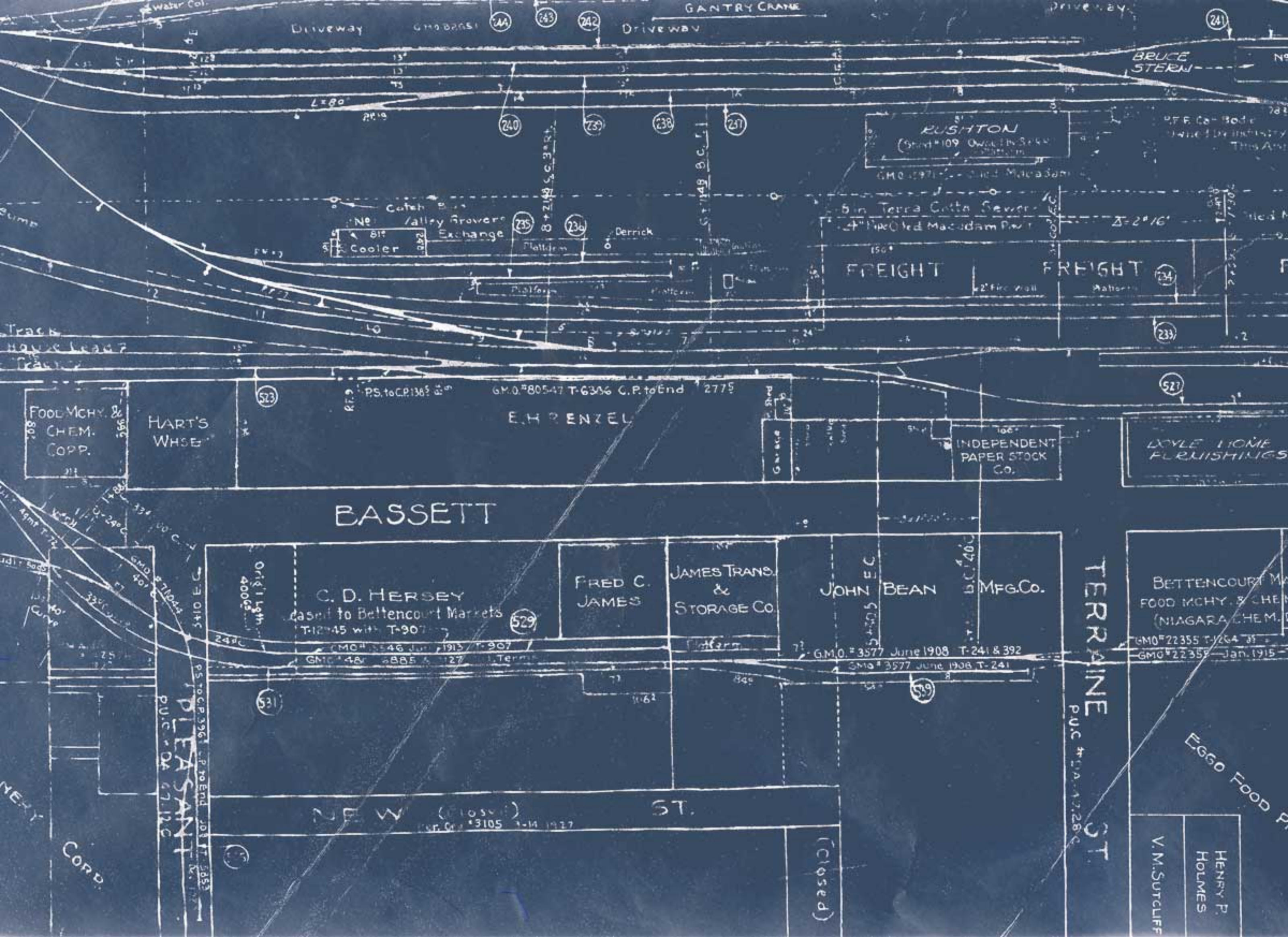
THIRD

NORTH - FOURTH

End of Track 19+80

2' Ext. P. T. 728-45  
G.M.O. 65152 Audit T-4908





Driveway G.M.O. 22851 (244) (243) (242) DRIVEWAY

RUSHTON  
(Sheet #109 Owned by S.P.K. Platform)  
G.M.O. 22971

Catch Basin  
No. 817  
Cooler  
Valley Growers Exchange  
Platform  
Derrick

FREIGHT FREIGHT  
2" Pipe Celled Macadam Pavt  
2' fire wall  
Platform

FOOD MCHY. & CHEM. COPP.

HART'S WHSE

E.H. RENZEL

INDEPENDENT PAPER STOCK Co.

DOYLE HOME FURNISHINGS

BASSETT

C. D. HERSEY  
based to Bettencourt Markets  
T-12345 with T-907  
G.M.O. # 2546 June 1913 T-907  
G.M.O. # 481 2885 & 1127

FRED C. JAMES

JAMES TRANS. & STORAGE CO.

JOHN BEAN

MFG. CO.

BETTENCOURT M. FOOD MCHY. & CHEM. (NIAGARA CHEM.)  
G.M.O. # 22355 T-264 35  
G.M.O. # 22355 Jan. 1915

TERRAINE ST.

PLEASANT

ST.

V.M. SUTCLIFF  
HENRY P. HOLMES

(Closed)

CORP.