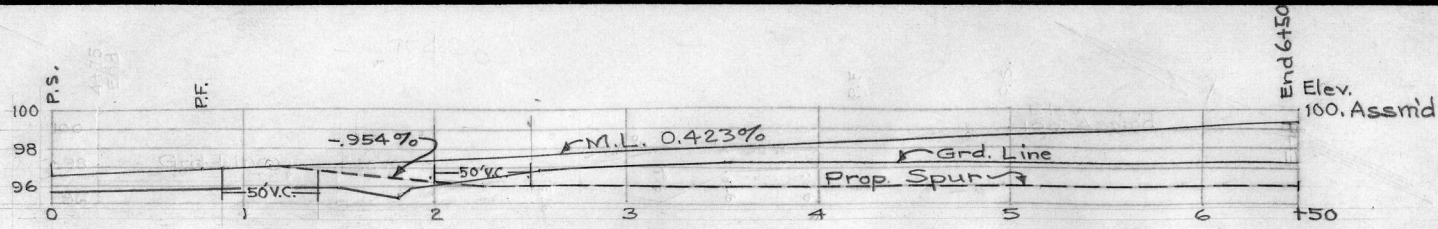


## **Southern Pacific Company Engineering Drawings**

The following drawings are copies of originals produced by SPCo draftsmen. They were created either from blank forms, or from copies of earlier drawings, using pencil and/or ink, and were not colorized. They subsequently were copied, and the copies were then hand-colored for forwarding to the appropriate parties for review.

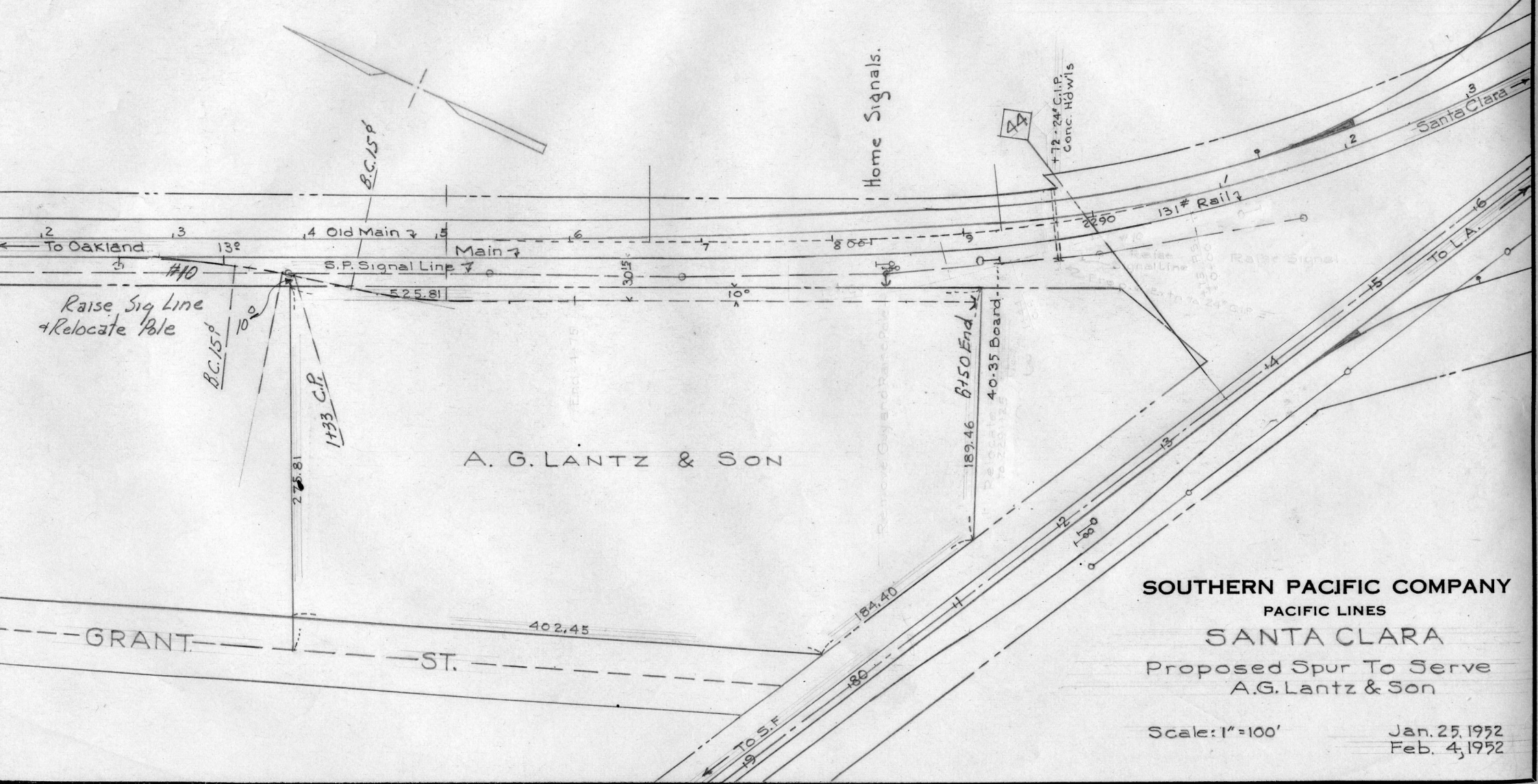
Within any geographic location, such as a city or town, the images are placed in in the PDF in no particular order. When the file contains several geographic locations, they are ordered north-to-south.

You are free to use the contents of this PDF as you see fit. If you republish any of these images, we request that you email us notification at [wx4org@yahoo.com](mailto:wx4org@yahoo.com) and give us a credit line stating *Image Courtesy of Wx4.org*.



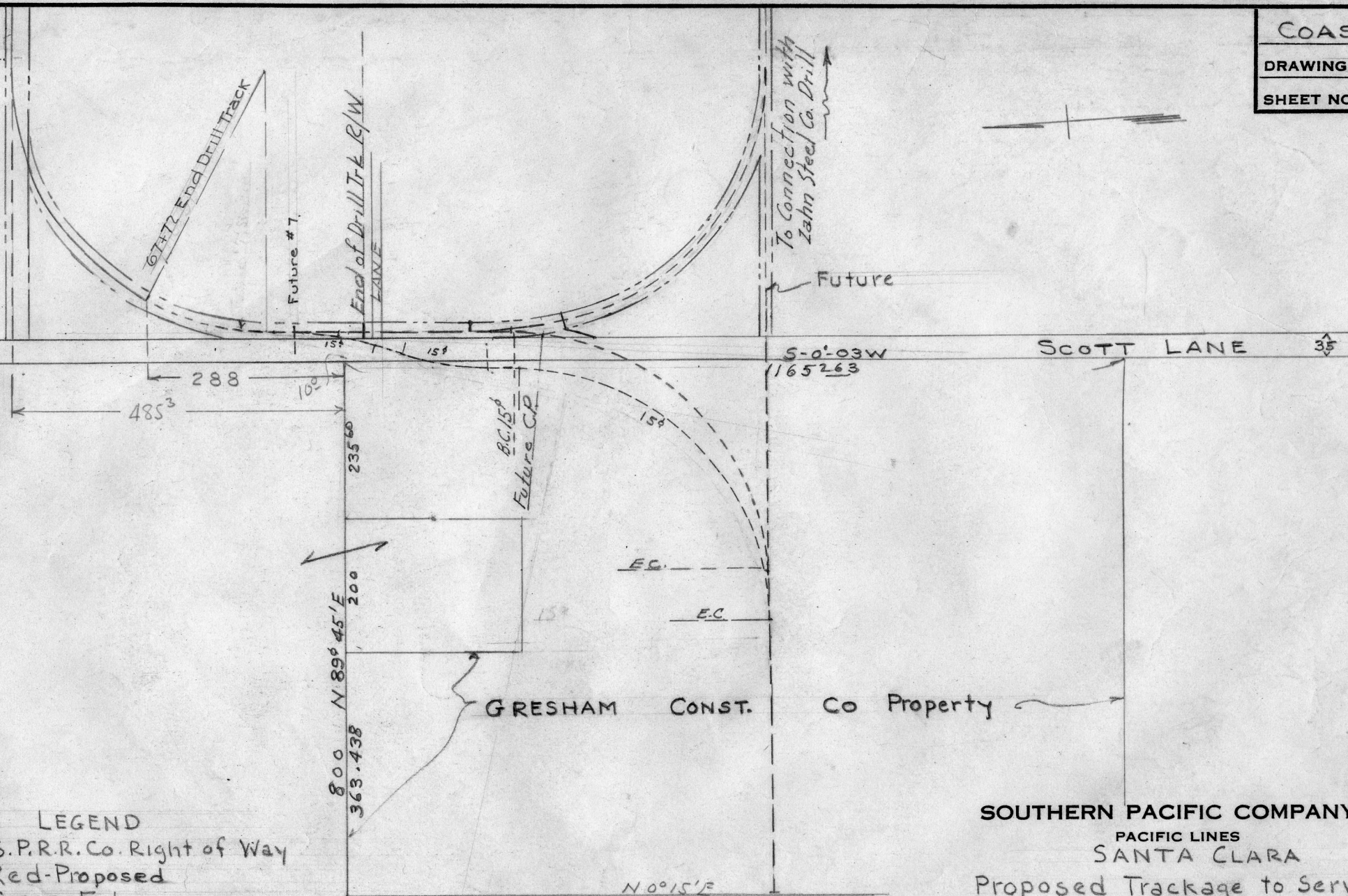
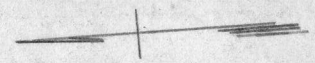
PROFILE - PROPOSED SPUR  
 1"=100' Horiz., 1"=10' Vert.

~ LEGEND ~  
 - - - - - Southern Pacific Right of Way  
 - - - - - Red - Proposed Trackage  
 - - - - - Yellow - To be removed or relocated



**SOUTHERN PACIFIC COMPANY**  
 PACIFIC LINES  
**SANTA CLARA**  
 Proposed Spur To Serve  
 A.G. Lantz & Son

Scale: 1"=100'  
 Jan. 25, 1952  
 Feb. 4, 1952

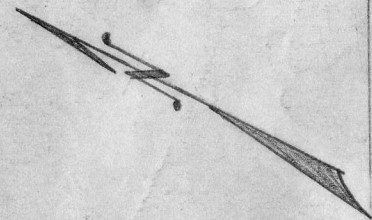


**LEGEND**

- S.P.R.R. Co. Right of Way
- Red-Proposed
- Green-Future
- Orange-Alternate
- Tint-Additional Drill Trk R/W

**SOUTHERN PACIFIC COMPANY**  
 PACIFIC LINES  
 SANTA CLARA  
 Proposed Trackage to Serve  
 Gresham Const. Co

Scale 1"=200' HDB. Jan. 25, 1952  
 2-12-52.



PACIFIC REDWOOD CASKET CO.

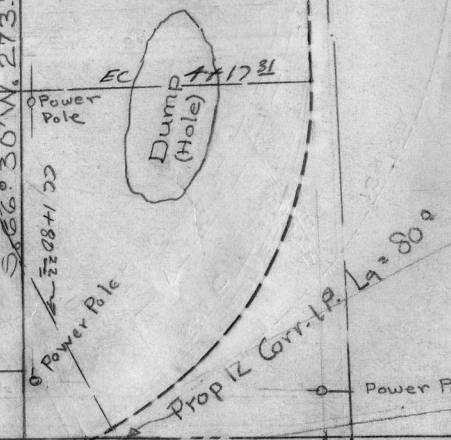
STOCKTON AVE  
S-0-10 E 200  
N 60-10 W 168  
127.97  
157.97  
N 24° W 149.16  
8+10 Future End

PROVANZANO  
306.80 S 66° 00' W 250  
252  
111.23  
80±  
10±  
Future  
S. 64°-08' W. 510.27  
Future

CITY OF SANTA CLARA

BUTTITTA

RS to C.P. 109±  
CP to End. 410±  
Total 515±



- LEGEND
- Sou. Pac. Co. R/W
  - Red: Trackage Owned & Maintained by Railroad
  - Mauve: Trackage Owned & Maintained by Industry

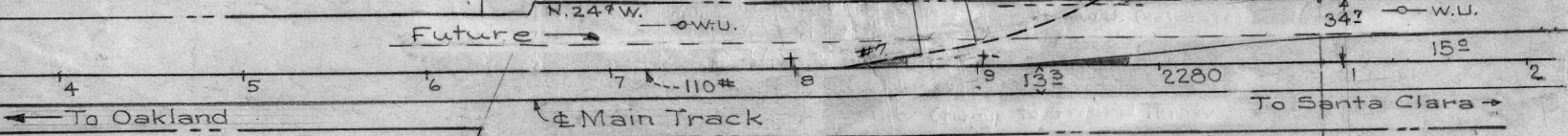
SOUTHERN PACIFIC COMPANY  
PACIFIC LINES

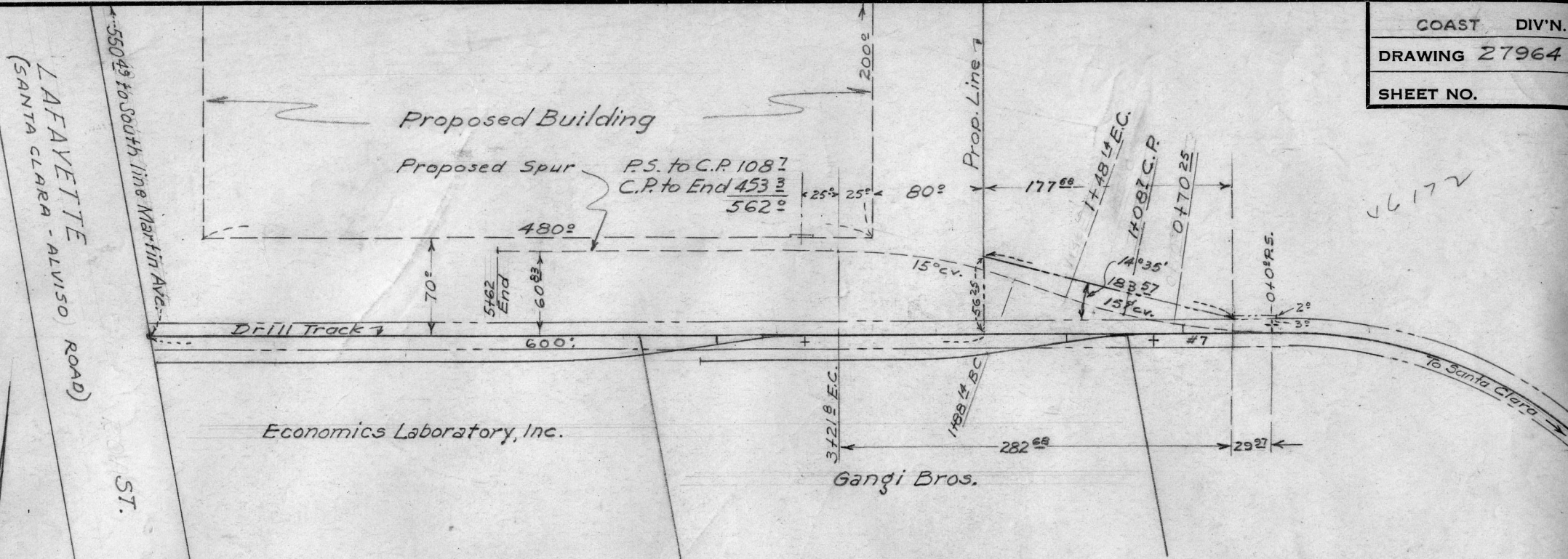
SANTA CLARA

Proposed Spur to Serve:  
Provanzano Bros. Lime & Supply Co.

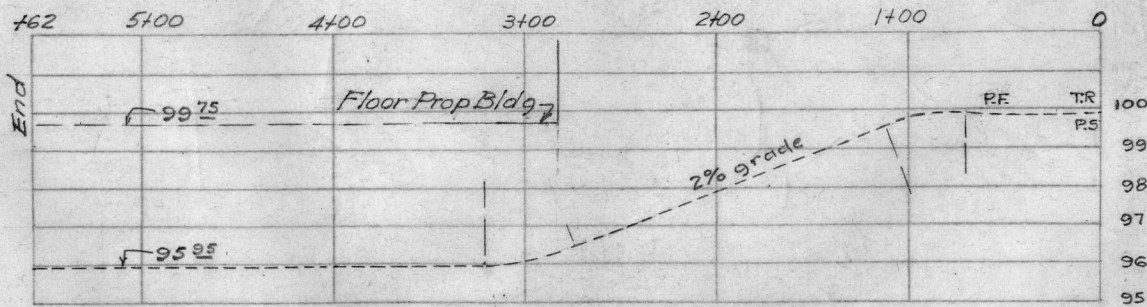
Scale 1"=100' HDB July 12, 1951  
Nov. 5, 1952 July 30, 1954 June 30, 1952  
May 28, 1952 Aug. 13, 1952  
Oct. 24, 1952

DRAWER





66172



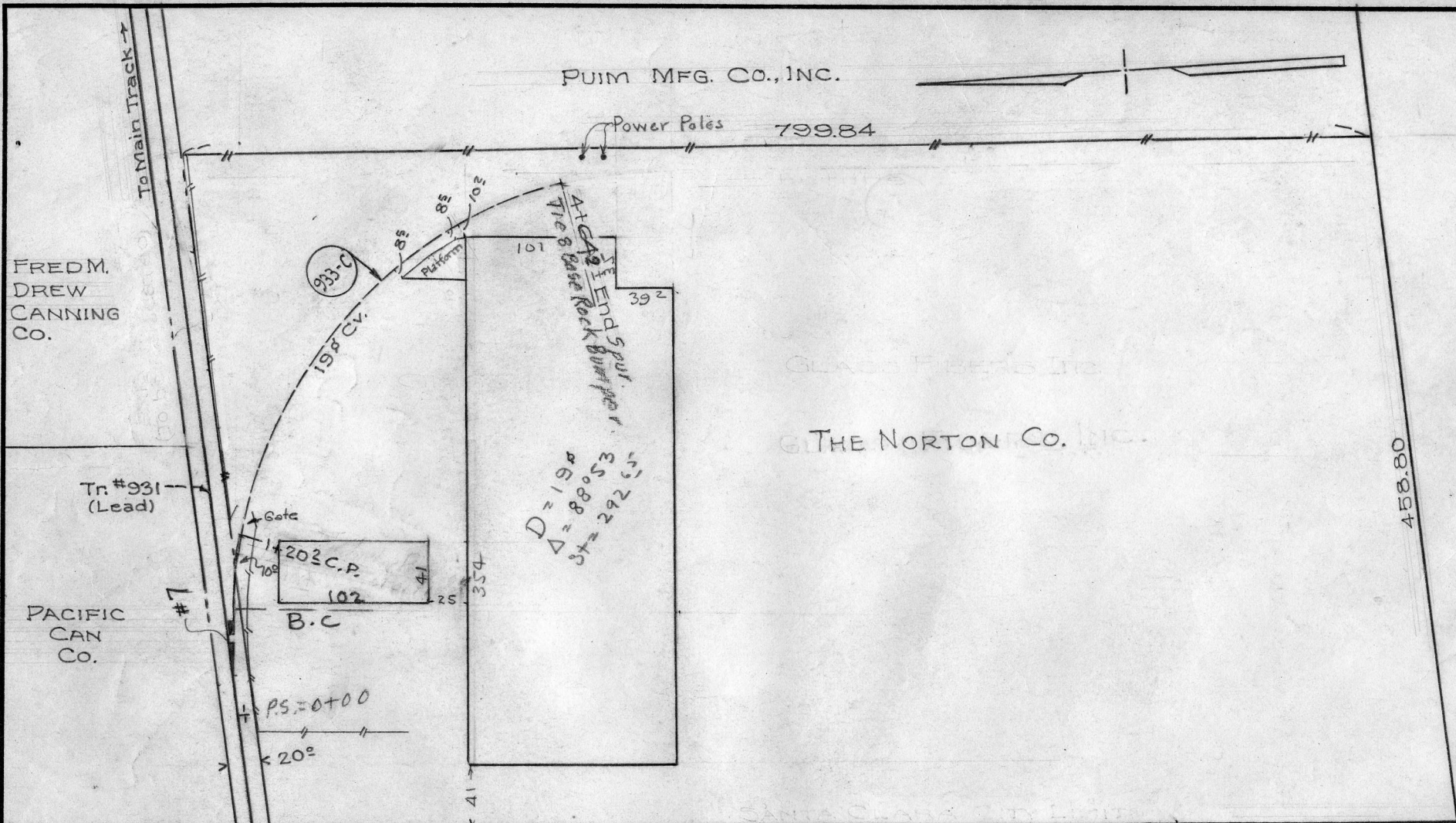
PROFILE  
Scale: Horiz: 1"=100'  
Vert.: 1"=5'

- LEGEND**
- So. Pac. R/W.
  - Red - S.P. Portion
  - Tint - Prop. Easement
  - Orange - Industry Portion

**SOUTHERN PACIFIC COMPANY**  
PACIFIC LINES  
**SANTA CLARA**

Prop. Spur and Easement to Serve  
Spur to Serve Sutherland Paper Co.  
Scale as shown J.J.Z. June 22, 1950  
July 7, 1950





FRED M.  
 DREW  
 CANNING  
 CO.

Tr #931  
 (Lead)

PACIFIC  
 CAN  
 CO.

PUIM MFG. CO., INC.

Power Poles 799.84

THE NORTON CO., INC.

LAFAYETTE STR.

D.U.C.# L-445-C

SOUTHERN PACIFIC COMPANY  
 PACIFIC LINES

SANTA CLARA

Track Serving The Norton Co.

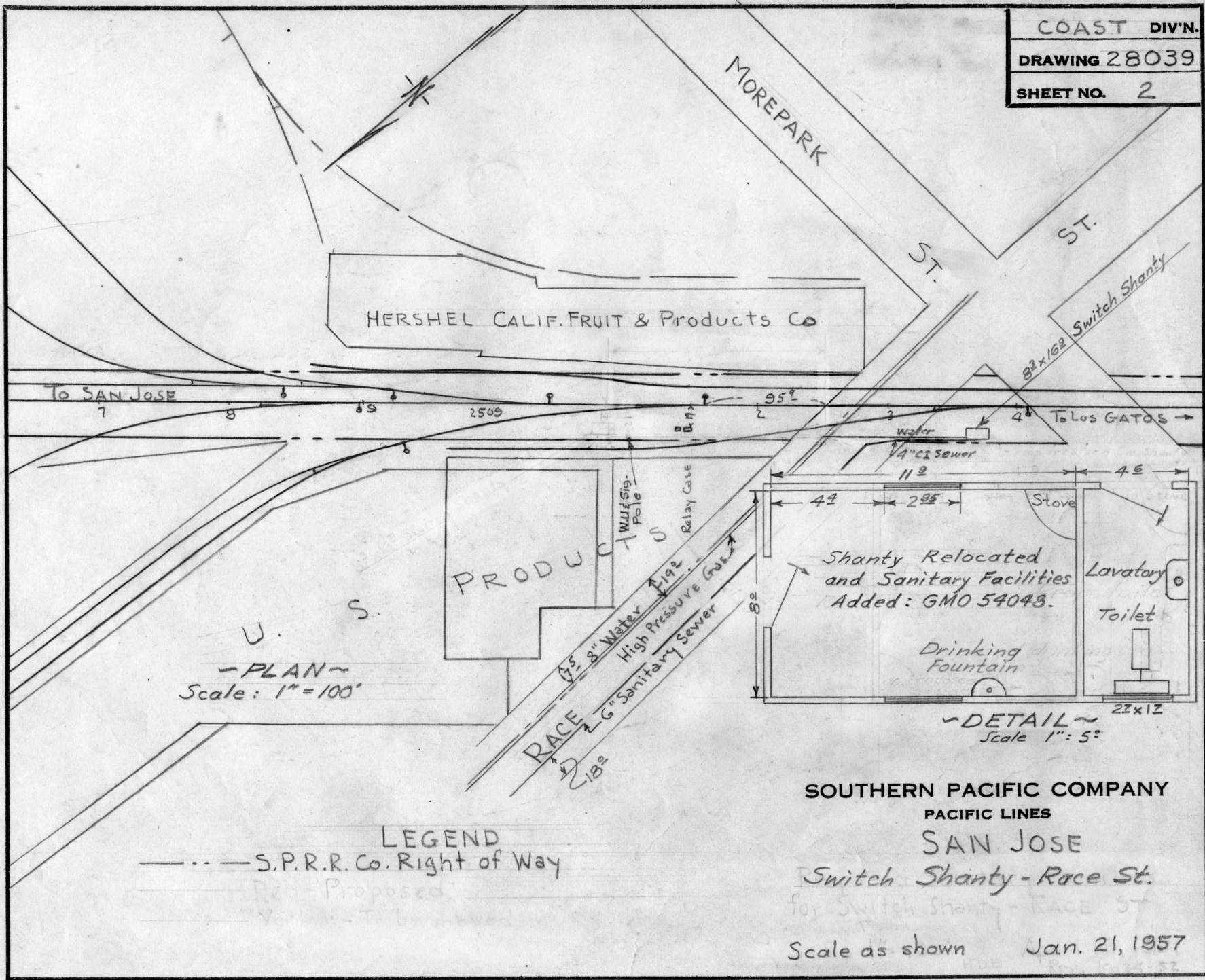
April 29, 1955  
 June 28, 1955  
 Feb. 19, 1952  
 March 11, 1952

Scale 1" = 100'  
 Rev. 7-30-57

HDB

- LEGEND**
- S.P.R.R.Co. Right of Way
  - Red: Track owned & maintained by Railroad
  - Mauve: Track owned & maintained by Industry

DRAWER



HERSHEL CALIF. FRUIT & PRODUCTS CO

TO SAN JOSE

TO LOS GATOS

PRODUCTS

~PLAN~  
 Scale: 1" = 100'

Shanty Relocated  
 and Sanitary Facilities  
 Added: GMO 54048.

~DETAIL~  
 Scale 1" = 5'

LEGEND  
 --- S.P.R.R. Co. Right of Way

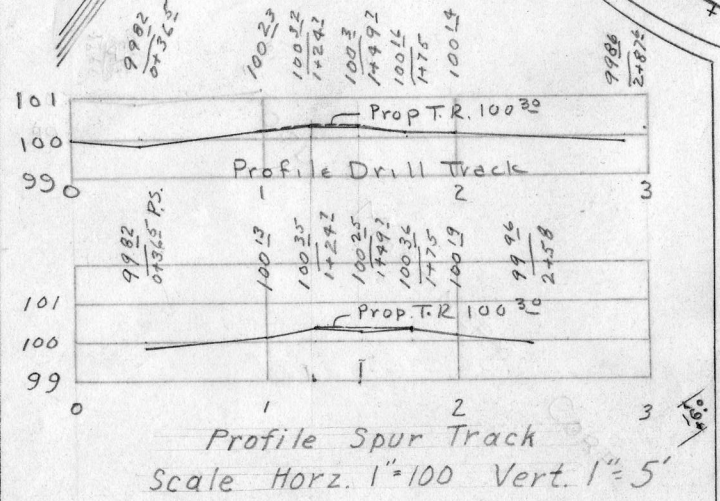
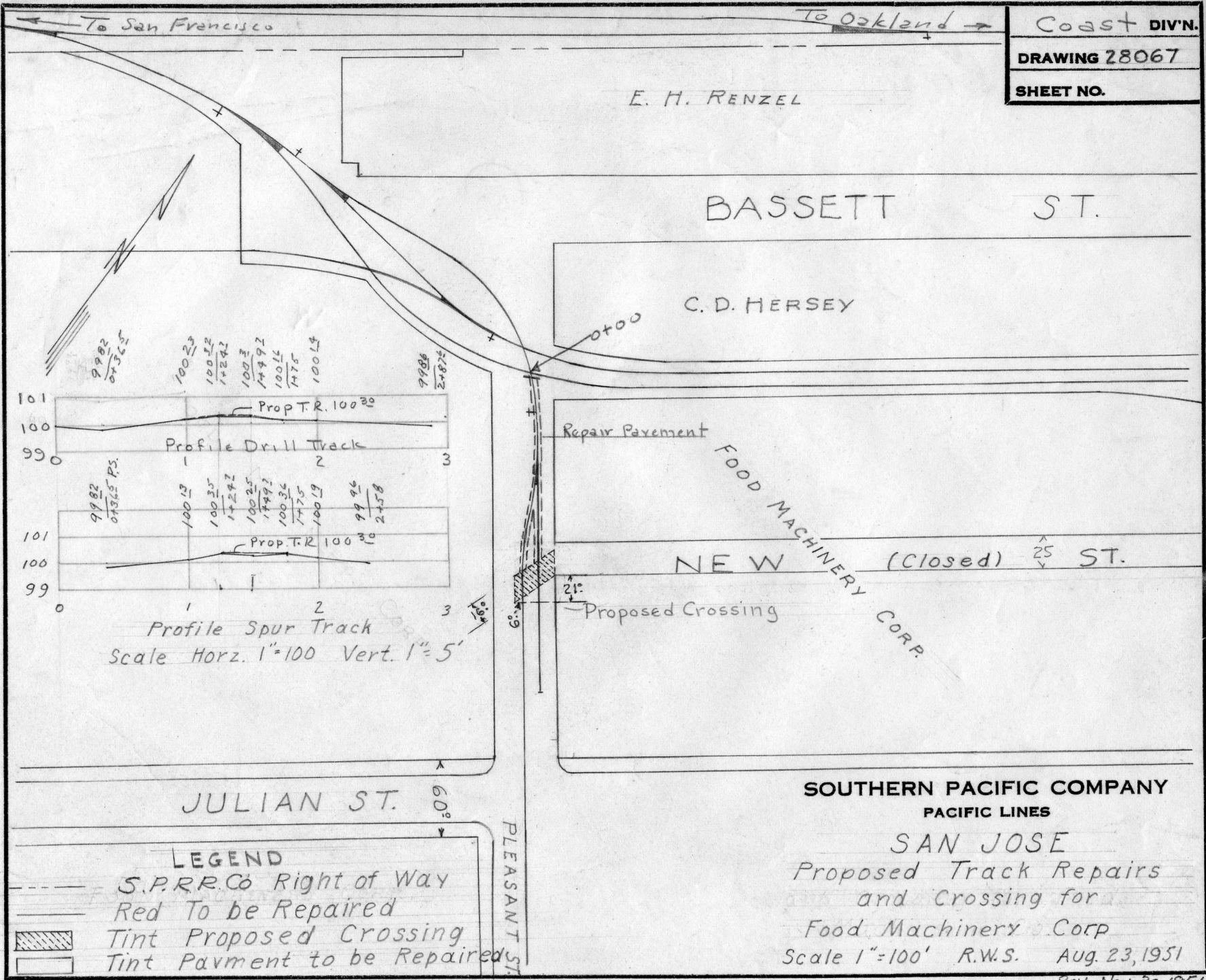
SOUTHERN PACIFIC COMPANY  
 PACIFIC LINES  
 SAN JOSE

Switch Shanty - Race St.

for Switch Shanty - RACE ST  
 Scale as shown Jan. 21, 1957

DRAWER





JULIAN ST. 60'

PLEASANT ST.

**LEGEND**

- S.P.R.R. Co Right of Way
- Red To be Repaired
- Tint Proposed Crossing
- Tint Pavment to be Repaired

E. H. RENZEL

BASSETT ST.

C. D. HERSEY

0+00

Repair Pavement

FOOD MACHINERY CORP.

NEW (Closed) ST. 25'

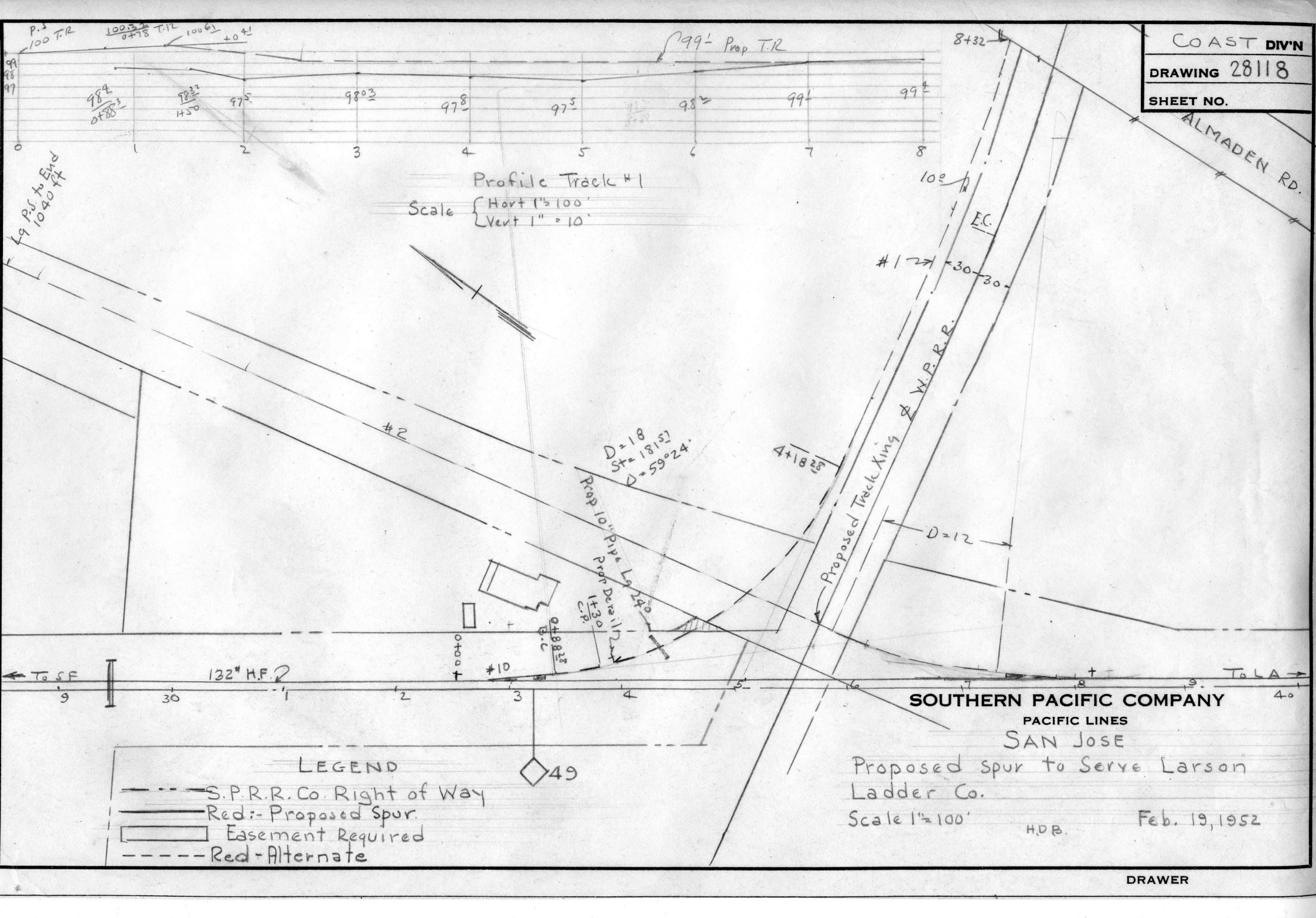
Proposed Crossing

21'

6'

**SOUTHERN PACIFIC COMPANY**  
PACIFIC LINES  
SAN JOSE  
Proposed Track Repairs  
and Crossing for  
Food Machinery Corp  
Scale 1"=100' R.W.S. Aug. 23, 1951  
Rev. Nov. 30, 1951

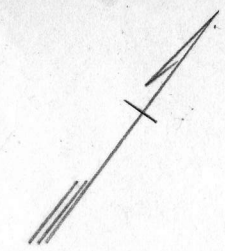
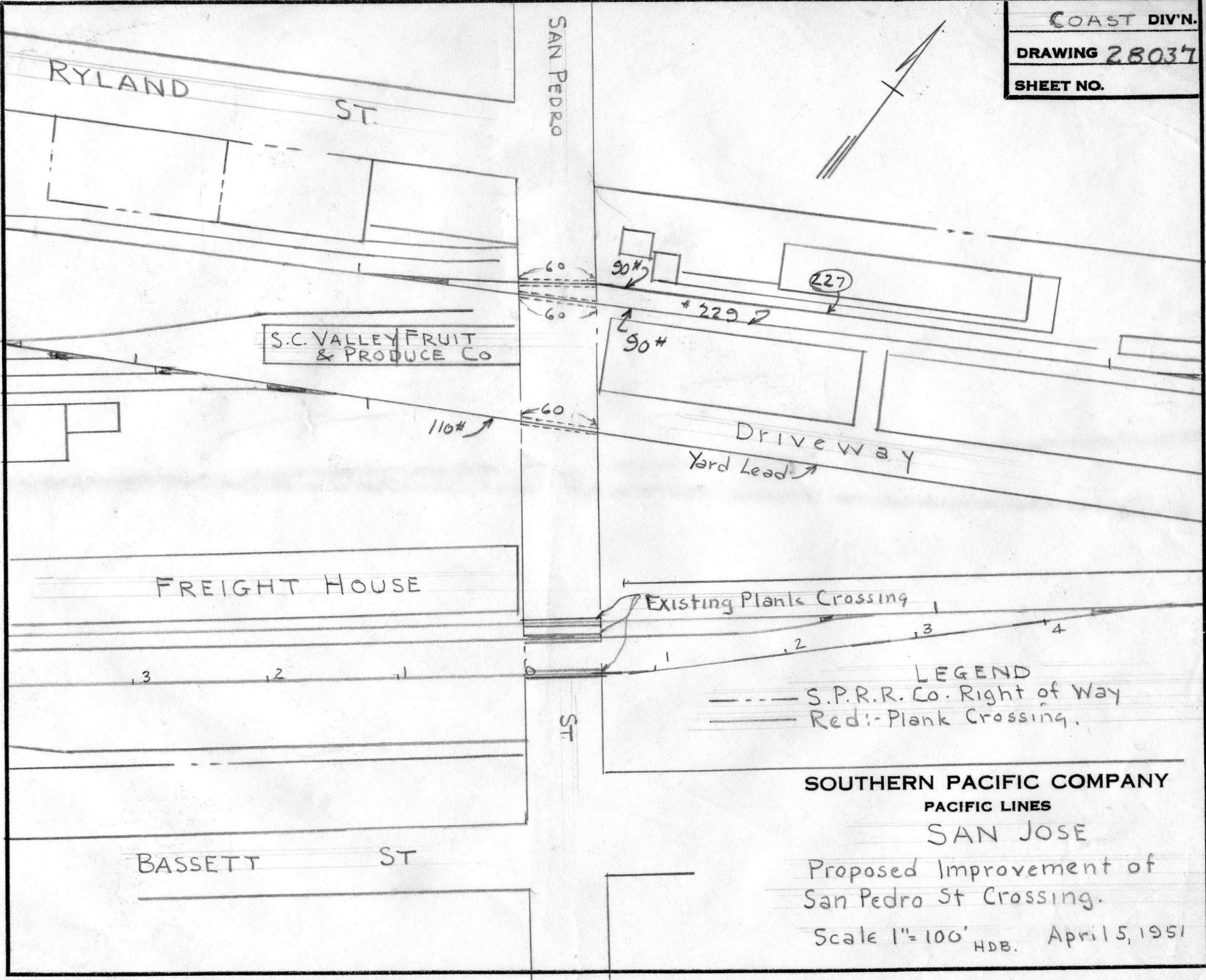
DRAWER



LEGEND

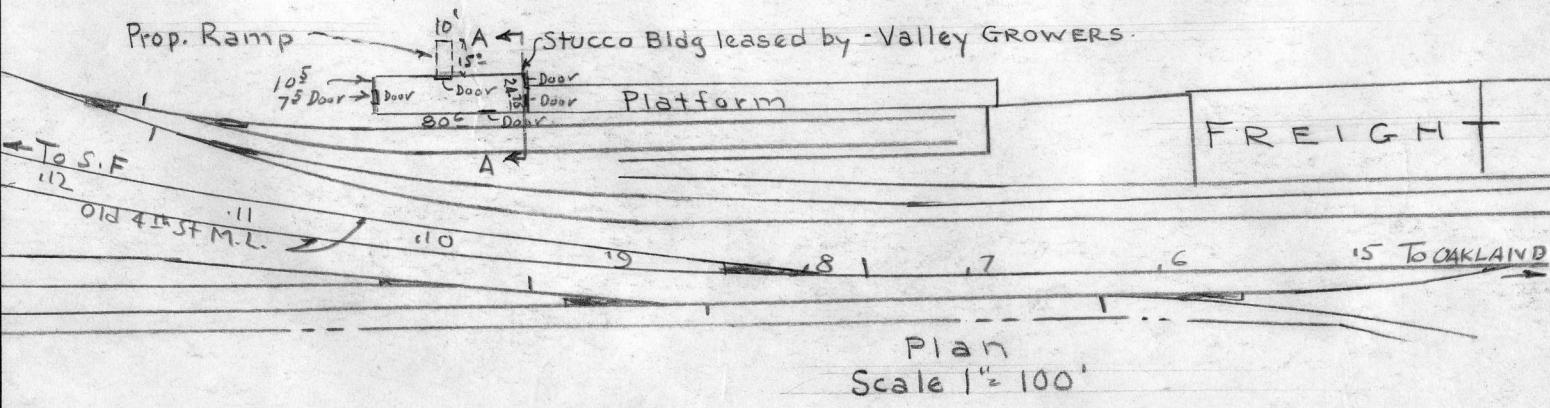
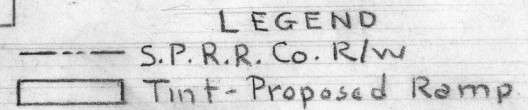
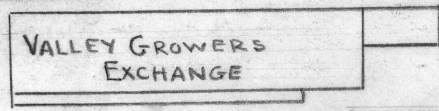
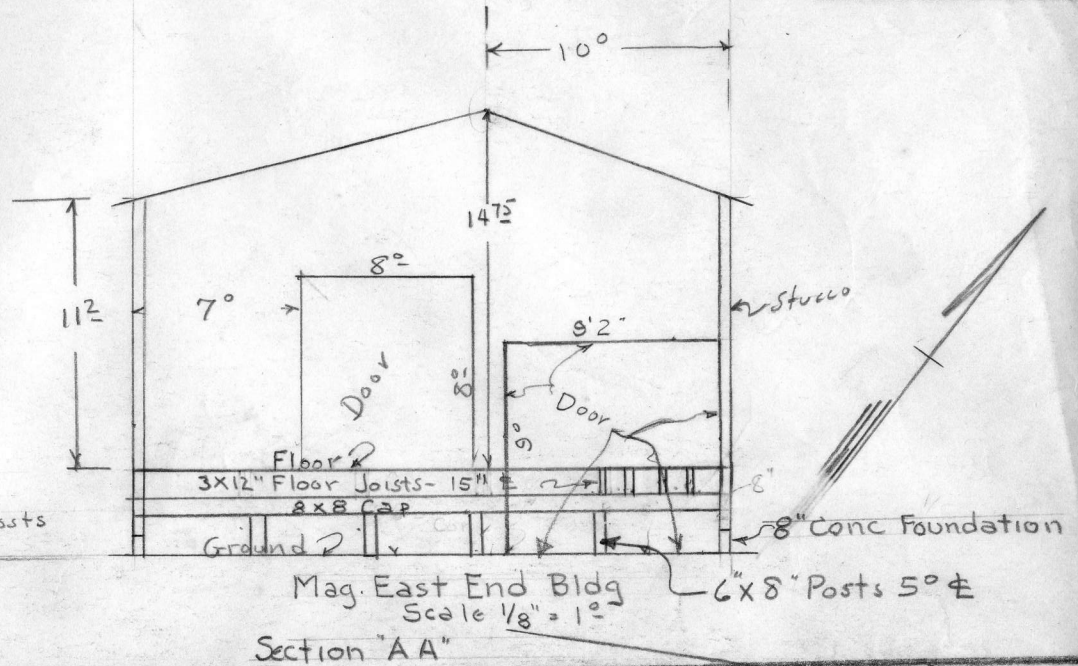
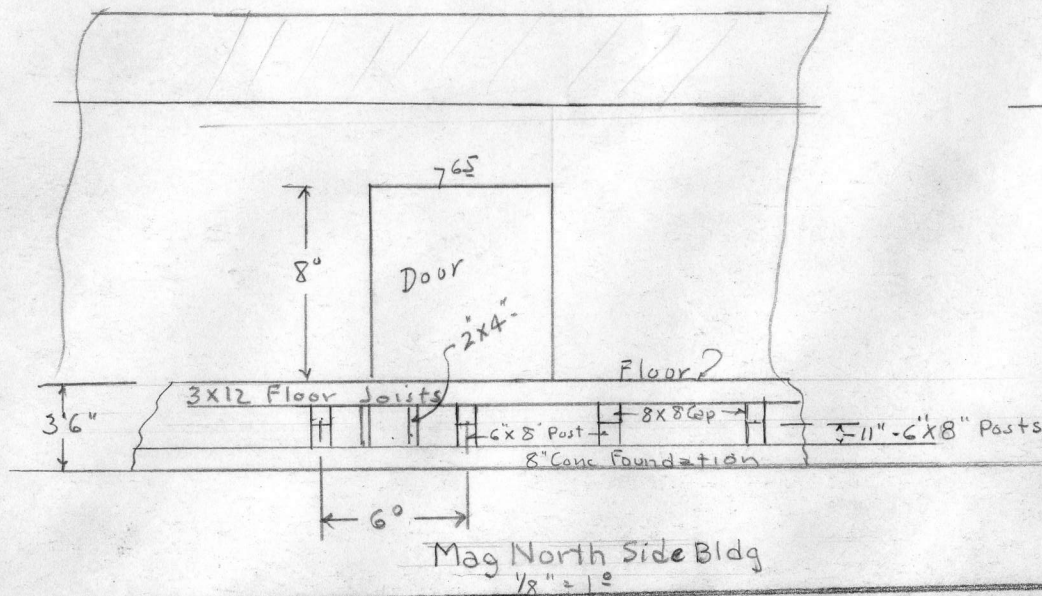
- S.P.R.R. Co. Right of Way
- Red: Proposed Spur.
- Easement Required
- - - - Red-Alternate

DRAWER



LEGEND  
 - - - - - S.P.R.R. Co. Right of Way  
 = = = = = Redi-Plank Crossing.

**SOUTHERN PACIFIC COMPANY**  
 PACIFIC LINES  
 SAN JOSE  
 Proposed Improvement of  
 San Pedro St Crossing.  
 Scale 1"=100' HDB. April 5, 1951



SOUTHERN PACIFIC COMPANY  
PACIFIC LINES  
SAN JOSE  
Proposed Ramp for Building  
occupied by Valley Growers. Exc  
Exchange  
Scale as shown HDB. March 28, 1951

SWANSTON LANE

LEGEND

- - - - - Sou. Pac. R/W
- - - - - Red: Prop. Work
- - - - - Orange: Alternate
- - - - - Yellow: Remove or Relocate

CASEY ROAD

1638+85.6 C.C. 148' Lt.

1540+29.12 C.C.S. 415 P.U.C. E-79.7

1542+54.12 E.C.

9

To San Francisco

1540

1

2

3

4

5

6

To Los Angeles

STATE

HIGHWAY

Power Pole

Wall

Ditch

W.U. Pole Line

Alternate 7

15'

15'

15'

**SOUTHERN PACIFIC COMPANY**

PACIFIC LINES

**GILROY**

(LONOKE)

Proposed Trackage To Serve  
Personal Products, Corp.

Scale 1" = 100'

Nov. 11, 1955

B.D. Trestle  
No. 79.75

DRAWER