

Southern Pacific Company Engineering Drawings

The following drawings are copies of originals produced by SPCo draftsmen. They were created either from blank forms, or from copies of earlier drawings, using pencil and/or ink, and were not colorized. They subsequently were copied, and the copies were then hand-colored for forwarding to the appropriate parties for review.

Within any geographic location, such as a city or town, the images are placed in in the PDF in no particular order. When the file contains several geographic locations, they are ordered north-to-south.

You are free to use the contents of this PDF as you see fit. If you republish any of these images, we request that you email us notification at wx4org@yahoo.com and give us a credit line stating *Image Courtesy of Wx4.org*.

WESTERN DIV'N.
 DRAWING O-4161
 SHEET NO. 1

To Main Line

STORE NO. 1

SIGNAL MATERIAL SHED

Proposed Paving - Area 1500 sq ft

LUMBER SHED

LUMBER PLATFORM

PLANING MILL

STORE NO. 5

STORE #10 B & B WHSE NO. 4

LEGEND

Red Tint - Proposed Paving
 Yellow - Retire Platform

SOUTHERN PACIFIC COMPANY
 PACIFIC LINES

OAKLAND YARD

RETIRE LUMBER PLATFORM &
 PAVING AND PAVE AREA

Scale 1" = 100' Aug. 5th 1958

DRAWER

GILMORE STEEL
& SUPPLY
COMPANY

PACIFIC
PIPE
COMPANY

WESTERN DIV'N.
DRAWING O-4133
SHEET NO. 1

20TH
ST.

ST.

4517 Industry Port
1369 End R.R. Port

KIRKHAM
ST.

Track No. 91 G.M.O. 23484 L-5877'
T. 9921 - Audit 65479

Audit 63846 No. 7 38

P.S. 37+875

A.T. & S.F. RY.

To Main Line

P.S. 2+563

21ST
ST.

A.T. & S.F. RY.

EQUATION 5+127 = 37+945
End Joint S.R. - A.T. & S.F. Track

LEGEND

Yellow - Trackage Removed

P.S. 0+00

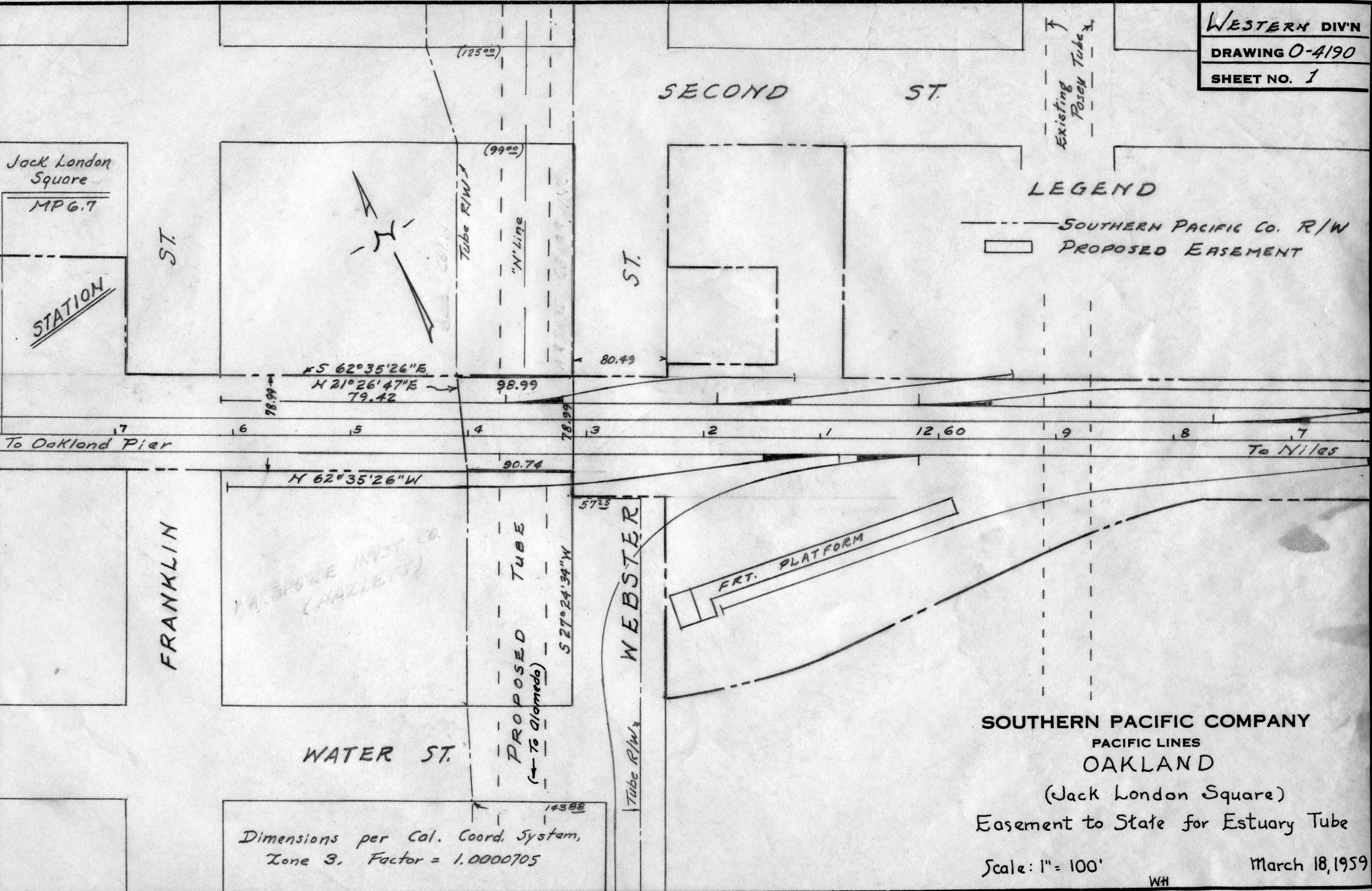
SOUTHERN PACIFIC COMPANY
PACIFIC LINES

OAKLAND
(16TH ST.)

A.T. & S.F. RY. - TRACKAGE - REMOVED

Scale 1" = 50' February 4, 1958

DRAWER



LEGEND

- SOUTHERN PACIFIC CO. R/W
- ▭ PROPOSED EASEMENT

SOUTHERN PACIFIC COMPANY
 PACIFIC LINES
 OAKLAND

(Jack London Square)
 Easement to State for Estuary Tube

Scale: 1" = 100'

March 18, 1959

WH
 DRAWER

Dimensions per Cal. Coord. System,
 Zone 3. Factor = 1.0000705

Jack London Square
 MP 6.7

STATION

To Oakland Pier

To Niles

FRANKLIN ST.

WATER ST.

WEBSTER ST.

SECOND ST.

Tube R/W

PROPOSED TUBE
 (To Alameda)

Tube R/W

"N" Line

Existing Posey Tube

ERT. PLATFORM

WAREHOUSE INVEST. CO.
 (HALLETT)

To Oakland Pier

R/W →

Interceptor Sewer →

Proposed Sewer

W.B. Main

E.B. Main

Yard Drill

Old Commissary

Kitchen

Master Mechanics Office

Track # 13

Track # 14

Carbody

Carbody

Track # 15

SOUTHERN PACIFIC COMPANY
PACIFIC LINES

WEST OAKLAND
SANITARY SEWERSYSTEM

Scale: 1"=20' HK August 24, 1953

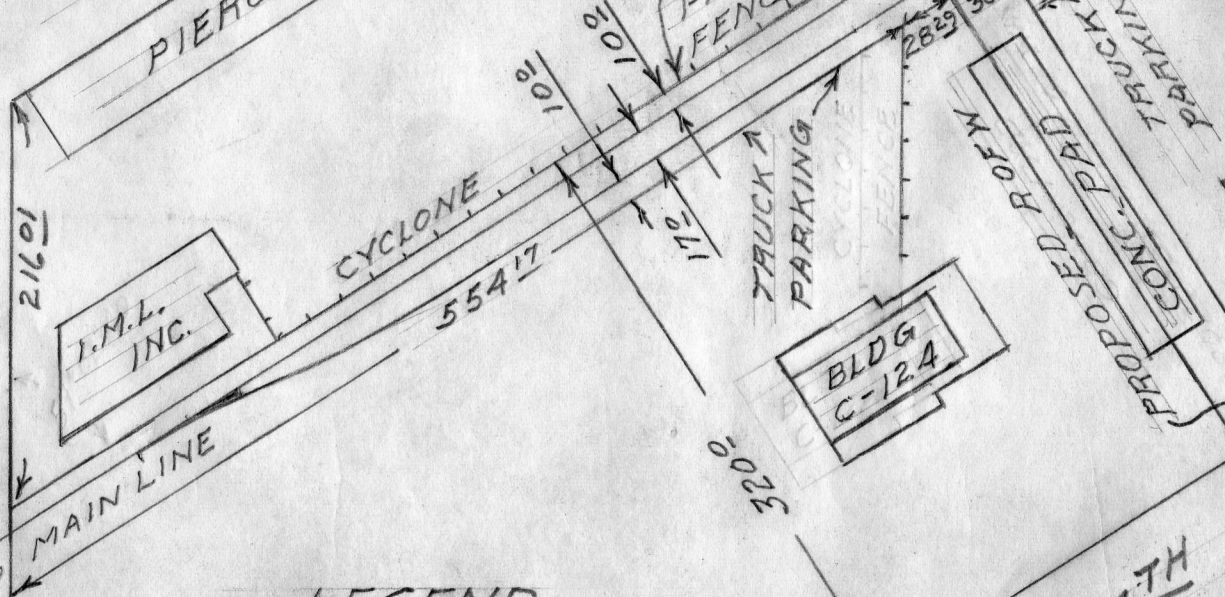
FERRY STREET

MARITIME ST.

BLDG. C-226
 COTTON WHSE.

STREET
 FREIGHT
 PIERCE FAST FREIGHT LINES

TO OAKLAND TERM. RY.
 1500 ± FT. TO PUC X-ING. A-423 C
 S.P. CO. TRACKS BUILT UNDER
 AUTHORITY OF PORT RESOLUTION
 NO. 1928 & OPERATED JOINTLY
 BY OAKLAND TERMINAL RY. & S.P. CO.



— LEGEND —

— RED — PROPOSED X-ING.

SOUTHERN PACIFIC COMPANY
 PACIFIC LINES

OAKLAND PIER
 PROPOSED PRIVATE ROAD
 CROSSING FOR PORT OF OAKLAND
 SCALE 1"=100' OCT. 21, 1959

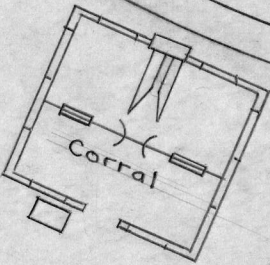
[Handwritten signature]

Western DIV'N.

DRAWING 0-2526

SHEET NO. 1

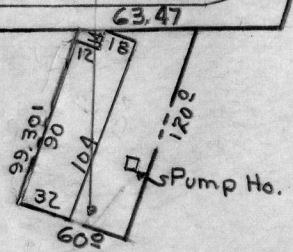
To Main Line



MIDDLE

HARBOR

ROAD



~ LEGEND ~

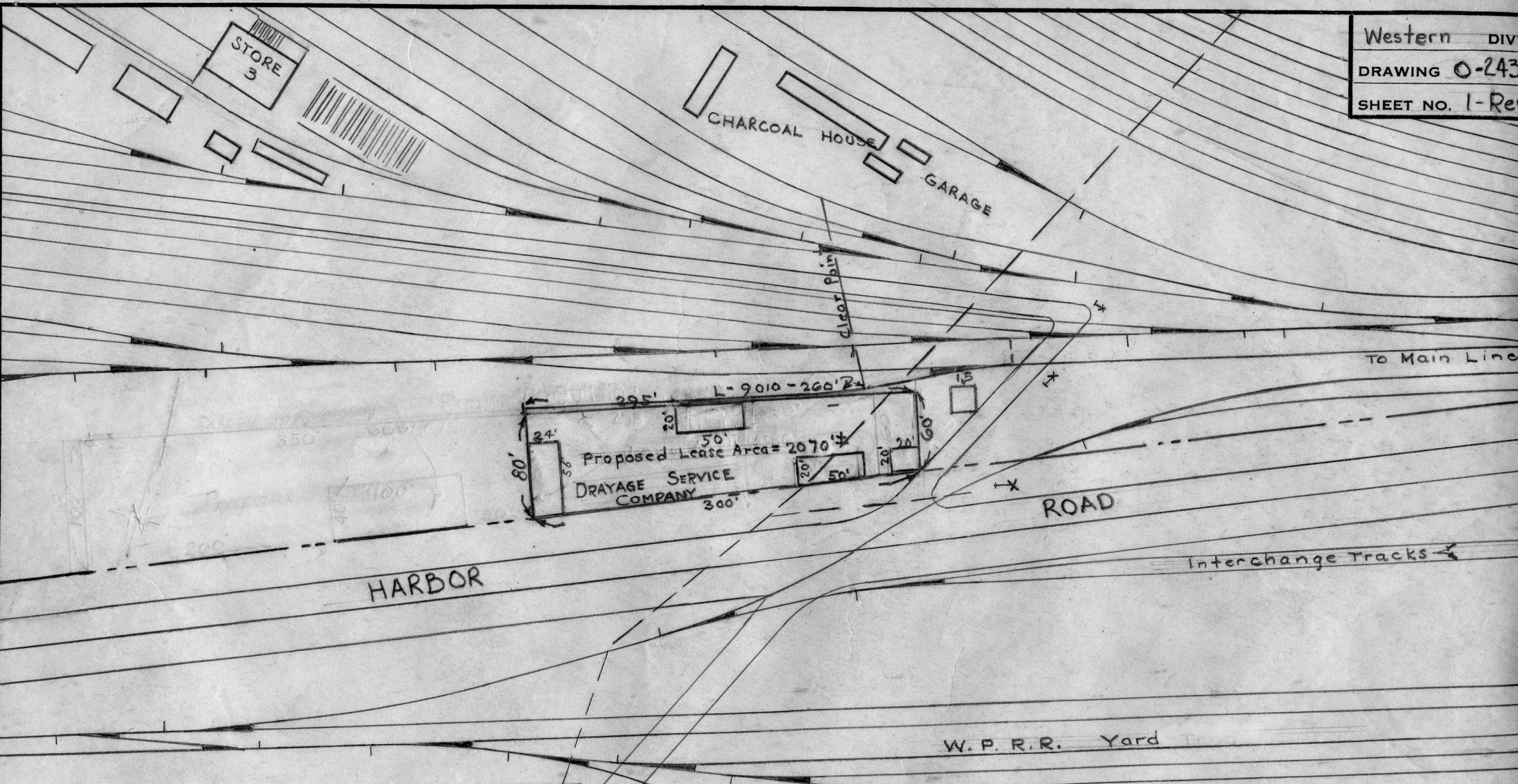
- Sou. Pac. Co. Right of Way
- Red - Proposed Lease

SOUTHERN PACIFIC COMPANY
PACIFIC LINES

OAKLAND YARD
PROPOSED LEASE

Scale 1" = 100' Fmy April 23/951

DRAWER



HARBOR

ROAD

Interchange Tracks

W. P. R. R. Yard

SOUTHERN PACIFIC COMPANY
 PACIFIC LINES

OAKLAND YARD

PROPOSED LEASE

LEGEND
 - - - - - Sou Pac. Co. Right of Way
 ——— Red - Proposed Lease

Scale 1"=100'
 Rev. 7-17-52
 Rev. 7-21-52
 Rev. 8-24-50
 Oct. 3, 1946
 Rev. 11/11/46
 Rev. 11/11/46
 Oakland Pier
 Rev. 11-4-48

DRAWER

assumed

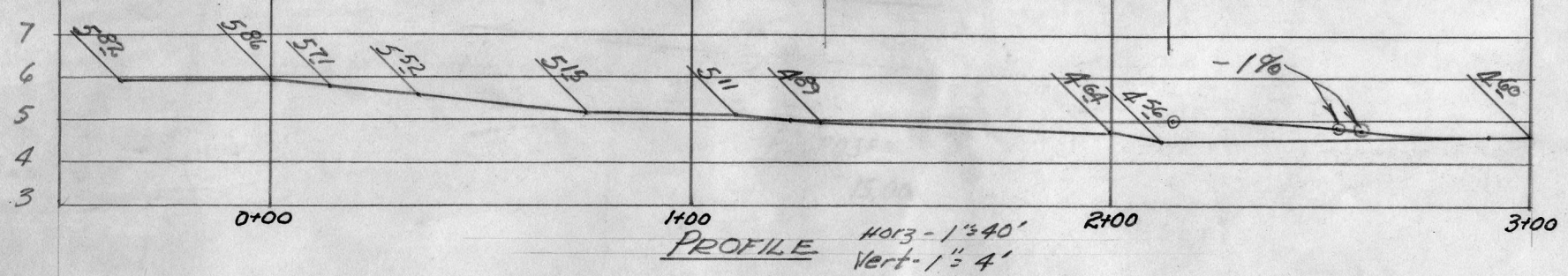
Western DIV'N.
DRAWING O-4149
SHEET NO. 1

Door 16⁷¹

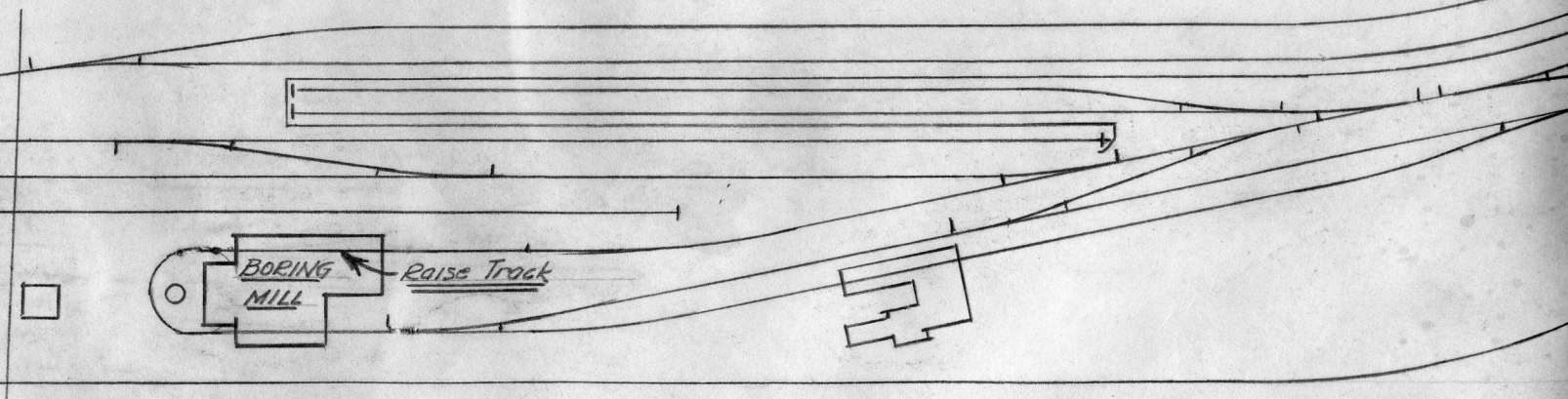
Door 12⁶⁶

ASSUMED

EL. 8



PROFILE
Horiz - 1" = 40'
Vert - 1" = 4'



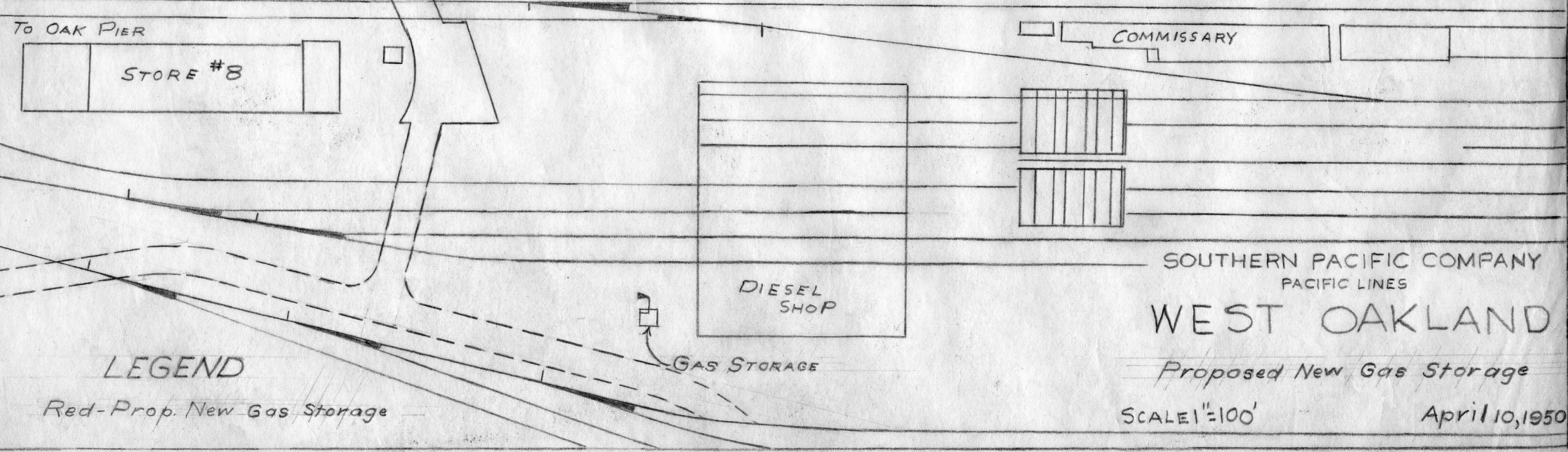
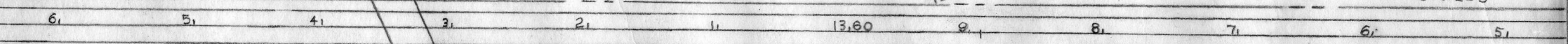
PLAN - Scale 1" = 100'

LEGEND
Red - Proposed Track Raise

SOUTHERN PACIFIC COMPANY
PACIFIC LINES
OAKLAND YARD
RAISE TRACK THRU
TIE BORING MILL
Scale Noted April 21, 1958

DRAWER

WESTERN DIV'N.
 DRAWING W-1790
 SHEET NO. 1



LEGEND

Red-Prop. New Gas Storage

SOUTHERN PACIFIC COMPANY
 PACIFIC LINES

WEST OAKLAND

Proposed New Gas Storage

SCALE 1"=100'

April 10, 1950

Commissary

Western DIV'N
DRAWING W-1804
SHEET NO. 1

Office Tool Room Sheet Metal and Pipe Shop Cleaning

Transfer

Diesel Switcher Repair Track

DIESEL SHOP

Table

Truck Drop Table

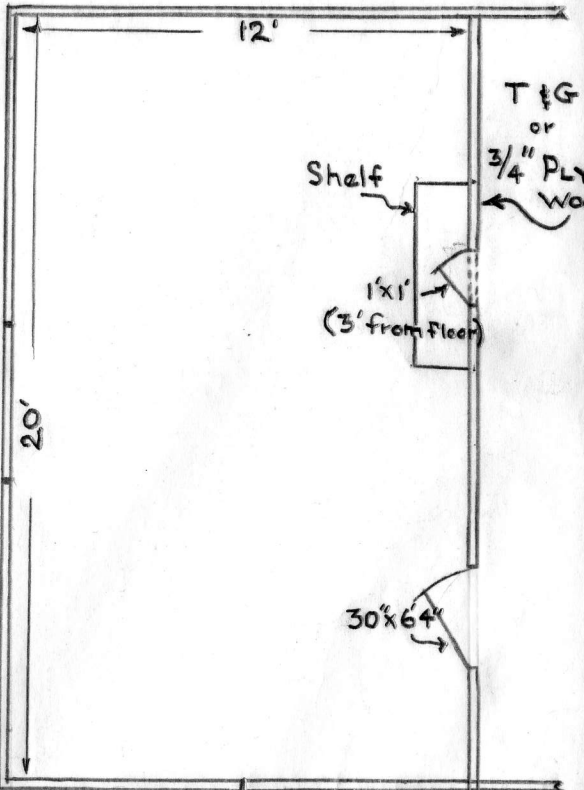
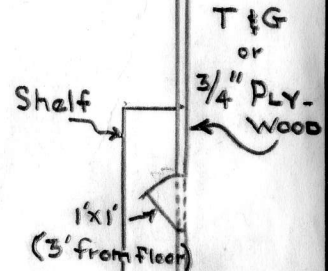
Office

Locker Room

Proposed Chem. Lab.

Wheel & Roller Bearing Shop

Car Shop



Scale - 1" = 5'

SOUTHERN PACIFIC COMPANY
PACIFIC LINES

WEST OAKLAND YARD

PROPOSED CHEMIST
LABORATORY

Scale 1" = 50' RWS

May 28, 1951

Legend

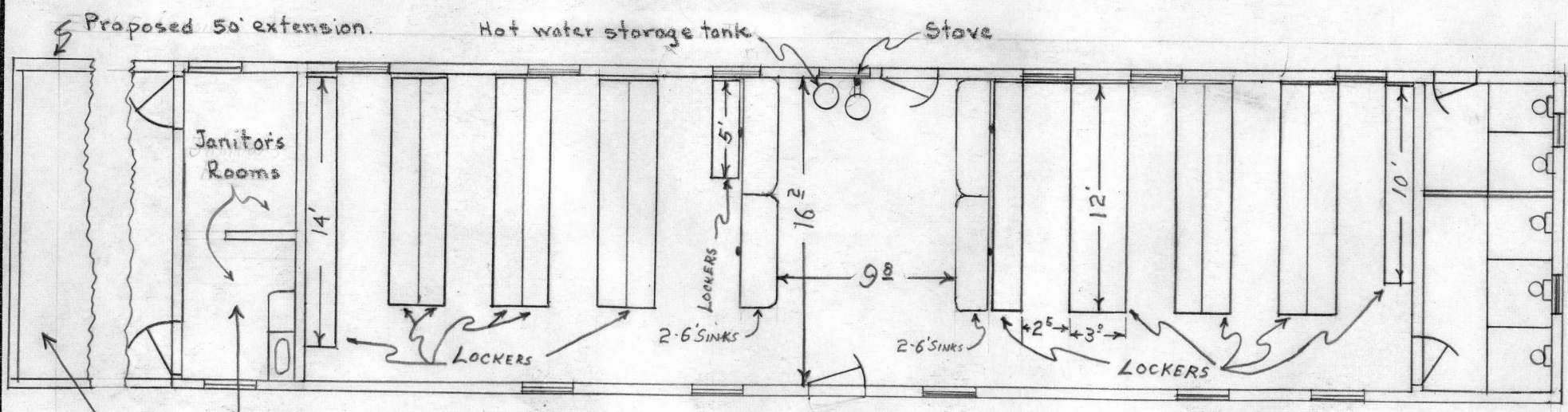
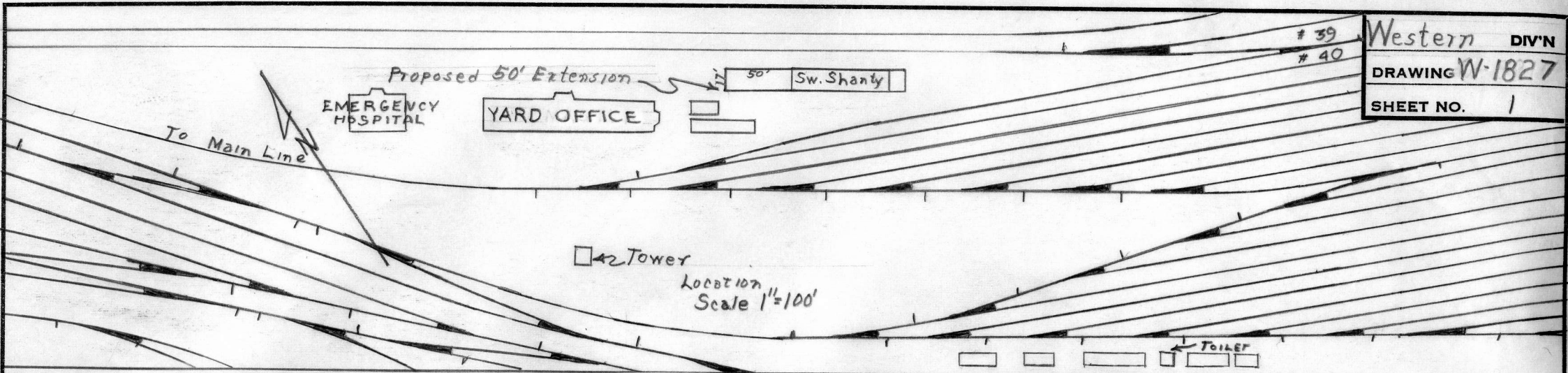
Red-Proposed Work

OAKLAND PIER

DRAWER

39
40

Western DIV'N
DRAWING W-1827
SHEET NO. 1



Move Janitor's rooms to end of 50' extension.

Existing Facilities - Scale 1"=8'

Existing Building: Rustic facing, cedar shingles, gable type roof, wood floor, wood foundation on mud sills; 2" x 4" studs @ 18" centers. T&G. walls and ceiling.

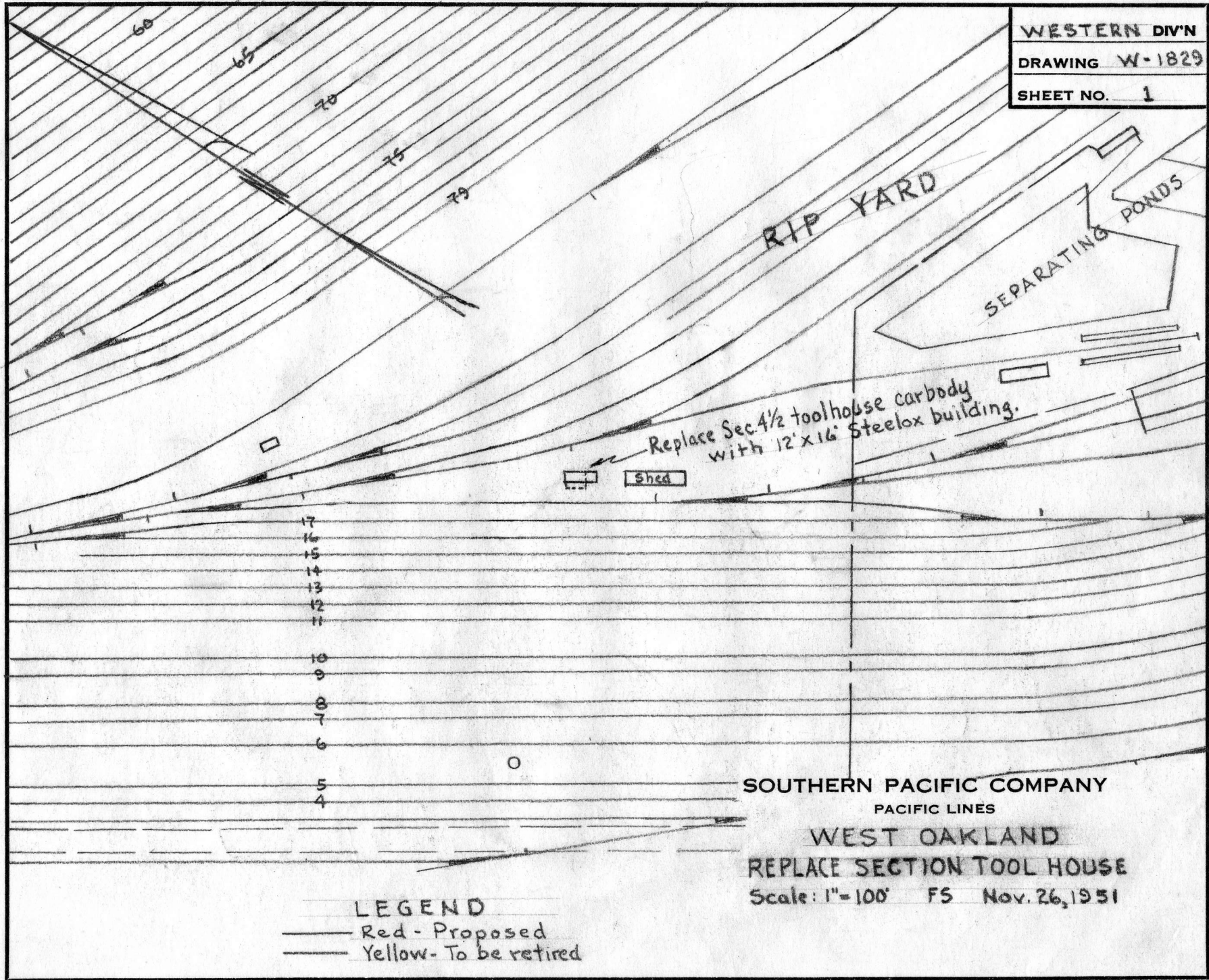
- LEGEND
- Red-Proposed new work
 - Yellow-Remove or relocate

SOUTHERN PACIFIC COMPANY
PACIFIC LINES

WEST OAKLAND LOCKER FACILITIES

Scale as shown
Nov. 20, 1951
Rev. 12-27-51

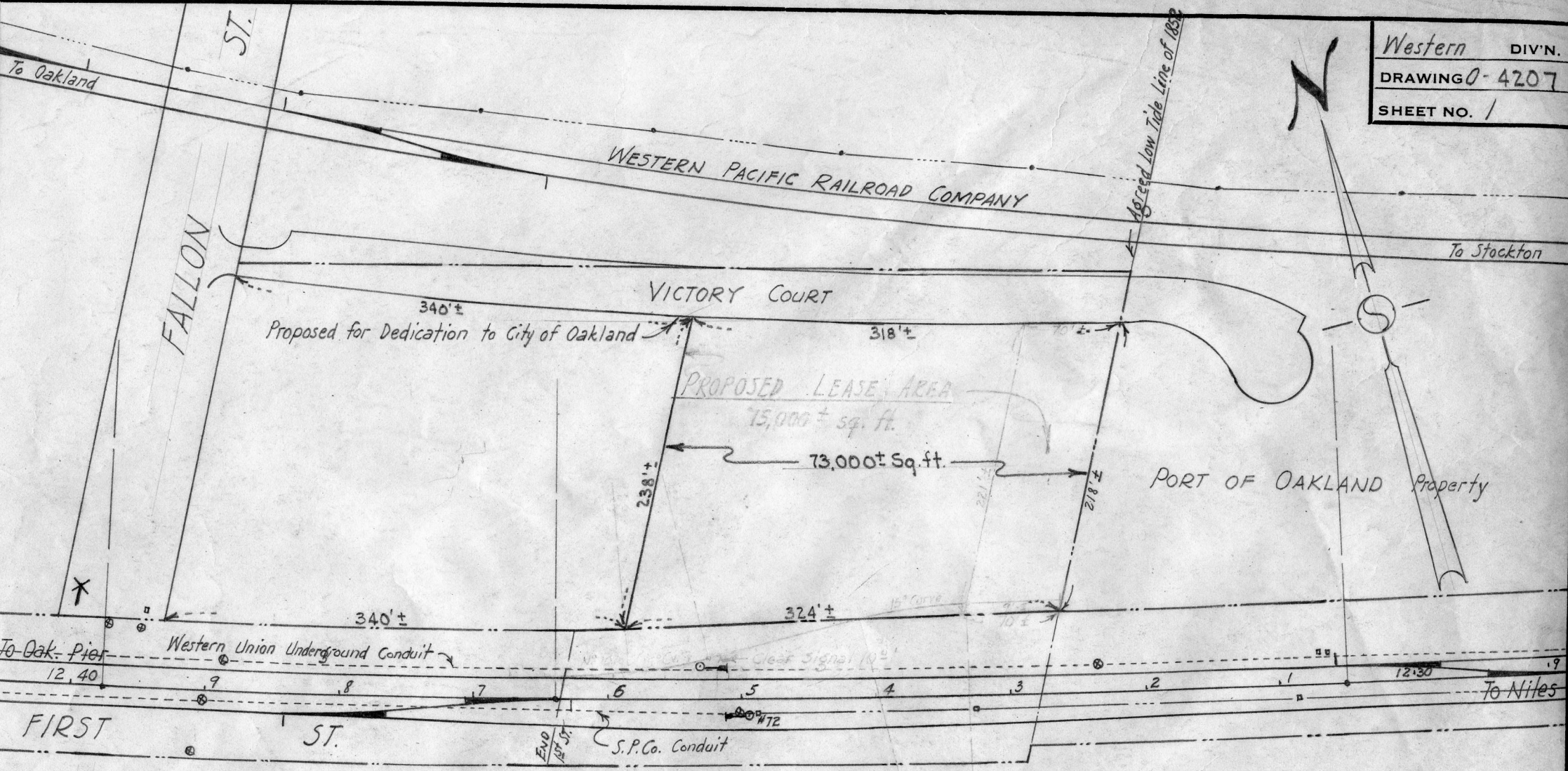
WESTERN DIV'N
 DRAWING W-1829
 SHEET NO. 1






SOUTHERN PACIFIC COMPANY
 PACIFIC LINES

WEST OAKLAND
 REPLACE SECTION TOOL HOUSE
 Scale: 1"=100' FS Nov. 26, 1951

LEGEND
 — Red - Proposed
 — Yellow - To be retired



~LEGEND~

-  Sou. Pac. Co. R/W
-  Red - Proposed New Work
-  Red Outline - Proposed Lease

SOUTHERN PACIFIC COMPANY
PACIFIC LINES
OAKLAND (First & Fallon Sts)

Proposed Property Matters Track Layout
for DAVIDS & STEINBACH Co.

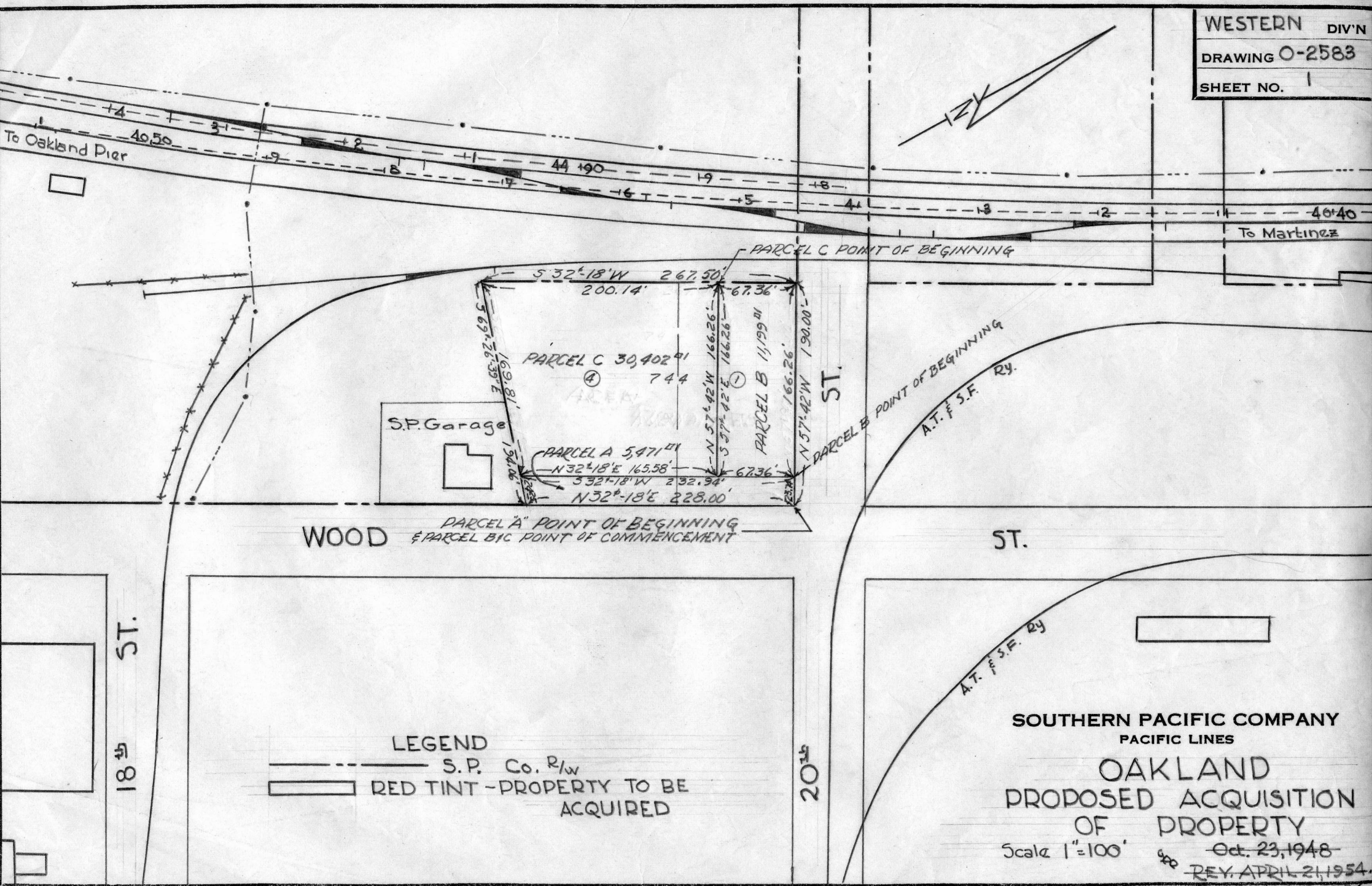
Scale: 1" = 100' CDR JTH July 13, 1959

DRAWER

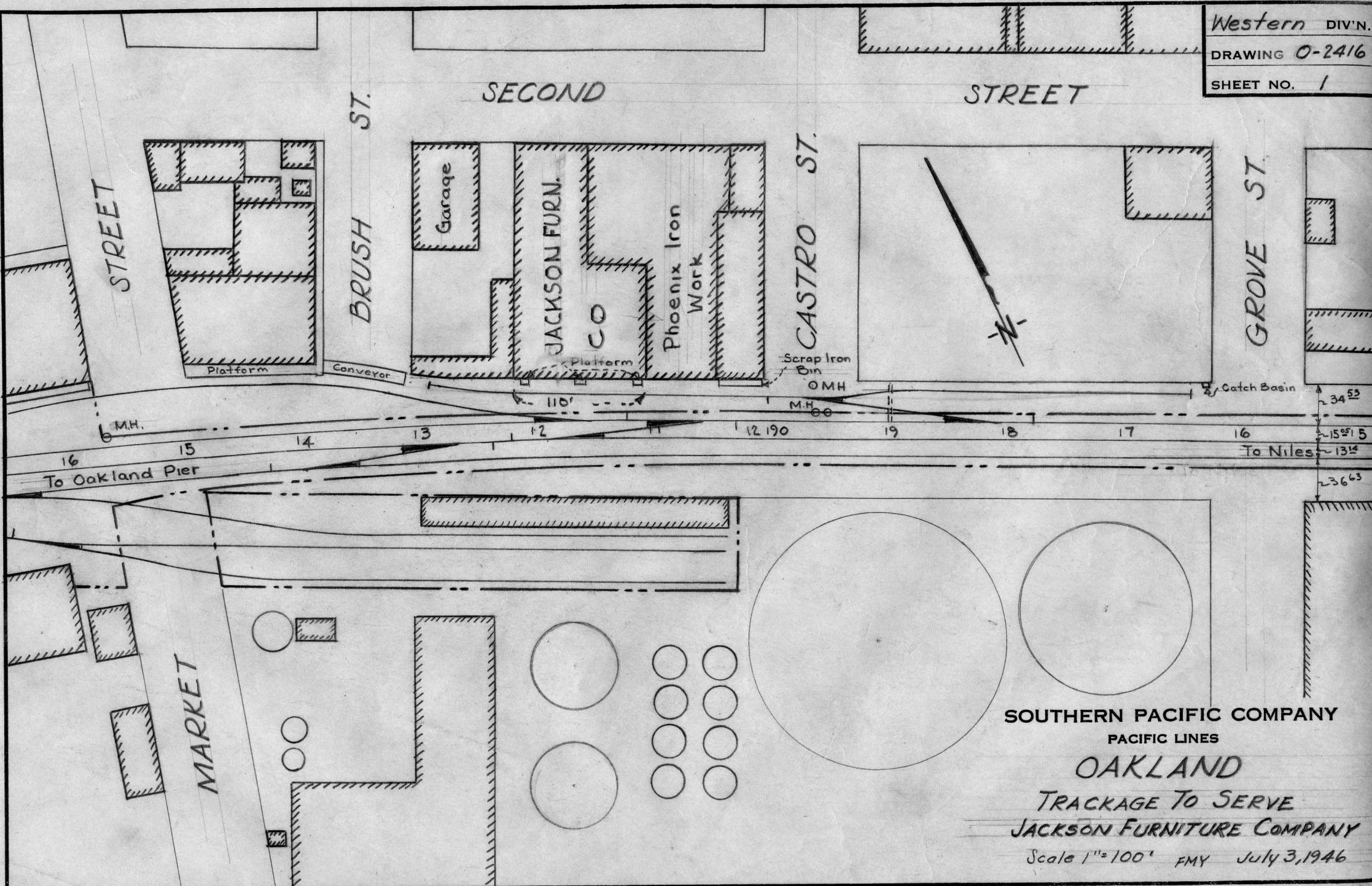
P.U.C. D-7.3

To Oakland Pier

To Martinez

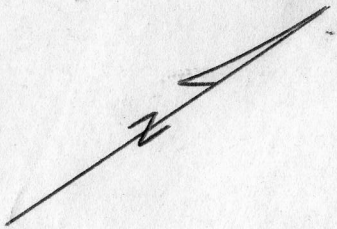


SOUTHERN PACIFIC COMPANY
 PACIFIC LINES
 OAKLAND
 PROPOSED ACQUISITION
 OF PROPERTY
 Scale 1"=100'
 Oct. 23, 1948
 REV. APRIL 21, 1954.
 REV. MAY 13, 1954.
 DRAWER



SOUTHERN PACIFIC COMPANY
 PACIFIC LINES
OAKLAND
 TRACKAGE TO SERVE
 JACKSON FURNITURE COMPANY
 Scale 1"=100' FMY July 3, 1946

WESTERN DIV'N
DRAWING 0-4211
SHEET NO. 1



To
MAIN LINE

PERALTA

RECONSTRUCT 210 T.F. INDUSTRY POR. ST.
REPLACE 90# RAIL WITH 110# RAIL

28TH
ST.

END

RR POR.
IND. POR.

LEGEND

- - - S.P. Co. RIGHT OF WAY
- RED - PROPOSED NEW WORK

29TH
ST.

ST.

POPLAR

SOUTHERN PACIFIC COMPANY
PACIFIC LINES

OAKLAND

PROPOSED IMPROVEMENTS TO SPUR
TRACK SERVING ASSOCIATED IRON
AND METALS CO.

SCALE 1"=100' JLC JULY 21, 1959

WESTERN DIV'N.

DRAWING O-4070

SHEET NO. 1



MYRTLE ST.

MARKET ST.

SECOND ST.

BRUSH ST.

Union Ice Company

PUC-D 6.1-C

13,00 9 8 7 6 5 4 3 2

To OAKLAND PIER

To ELMHURST

Howard Terminal Co.

P. G & E

SOUTHERN PACIFIC COMPANY
PACIFIC LINES

OAKLAND
PROPOSED CROSSING CLOSING

Scale 1"=100'

Dec. 3, 1956

WA

DRAWER

FALLON ST.

BORRMAN STEEL

Install 375 L.F. Grd. Rail
 Feather Out
 Pave 5000 Sq. Ft.

Remove & Replace Paving 975'

UNIVERSAL CARLOADING

7TH ST. Team Track

230TF C.I. Pt. to End

To M.L.

LEGEND

- SPCo. R/w
- Red - New Work
- Red Tint - Proposed Paving

SOUTHERN PACIFIC COMPANY
 PACIFIC LINES

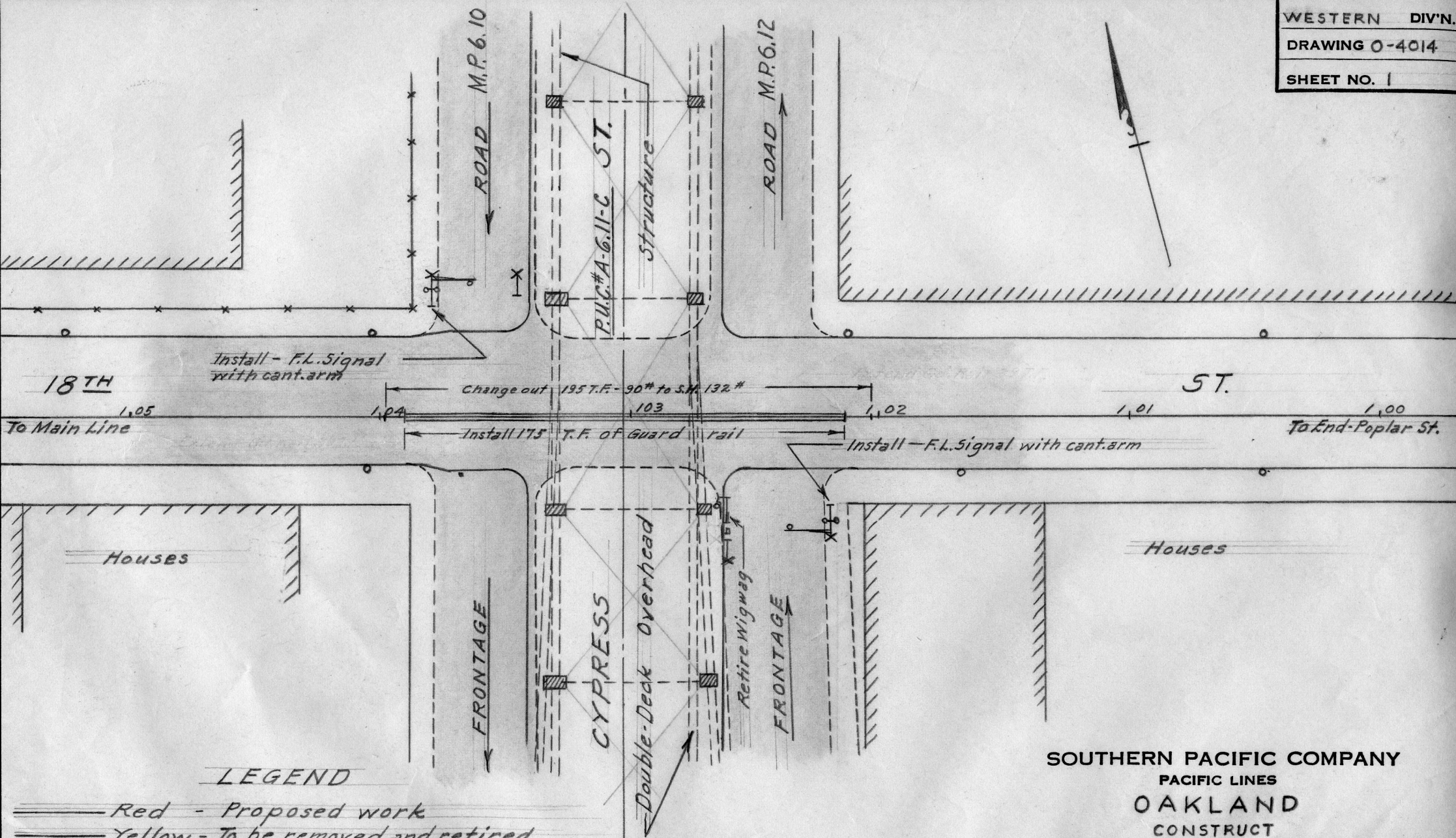
OAKLAND

Proposed Work
 Borrman Steel Co.

Scale: 1"=50'

June 20, 1957

JCC
 DRAWER



LEGEND

- Red - Proposed work
- Yellow - To be removed and retired

SOUTHERN PACIFIC COMPANY
 PACIFIC LINES
OAKLAND
 CONSTRUCT
 FRONTAGE ROAD CROSSINGS
 SCALE 1"=50' O.C.T. 10, 1955