

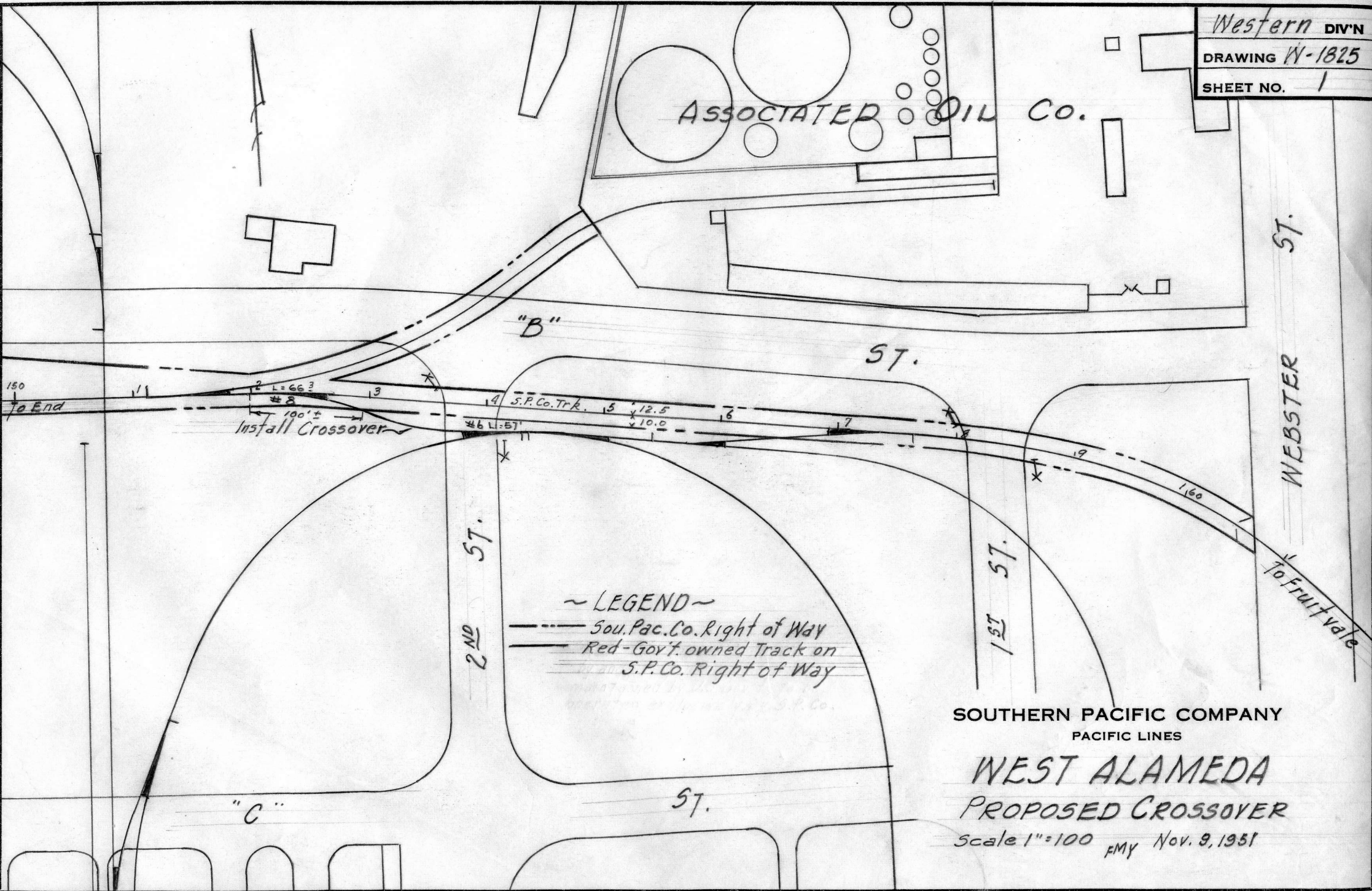
Southern Pacific Company Engineering Drawings

The following drawings are copies of originals produced by SPCo draftsmen. They were created either from blank forms, or from copies of earlier drawings, using pencil and/or ink, and were not colorized. They subsequently were copied, and the copies were then hand-colored for forwarding to the appropriate parties for review.

Within any geographic location, such as a city or town, the images are placed in in the PDF in no particular order. When the file contains several geographic locations, they are ordered north-to-south.

You are free to use the contents of this PDF as you see fit. If you republish any of these images, we request that you email us notification at wx4org@yahoo.com and give us a credit line stating *Image Courtesy of Wx4.org*.

ASSOCIATED OIL CO.

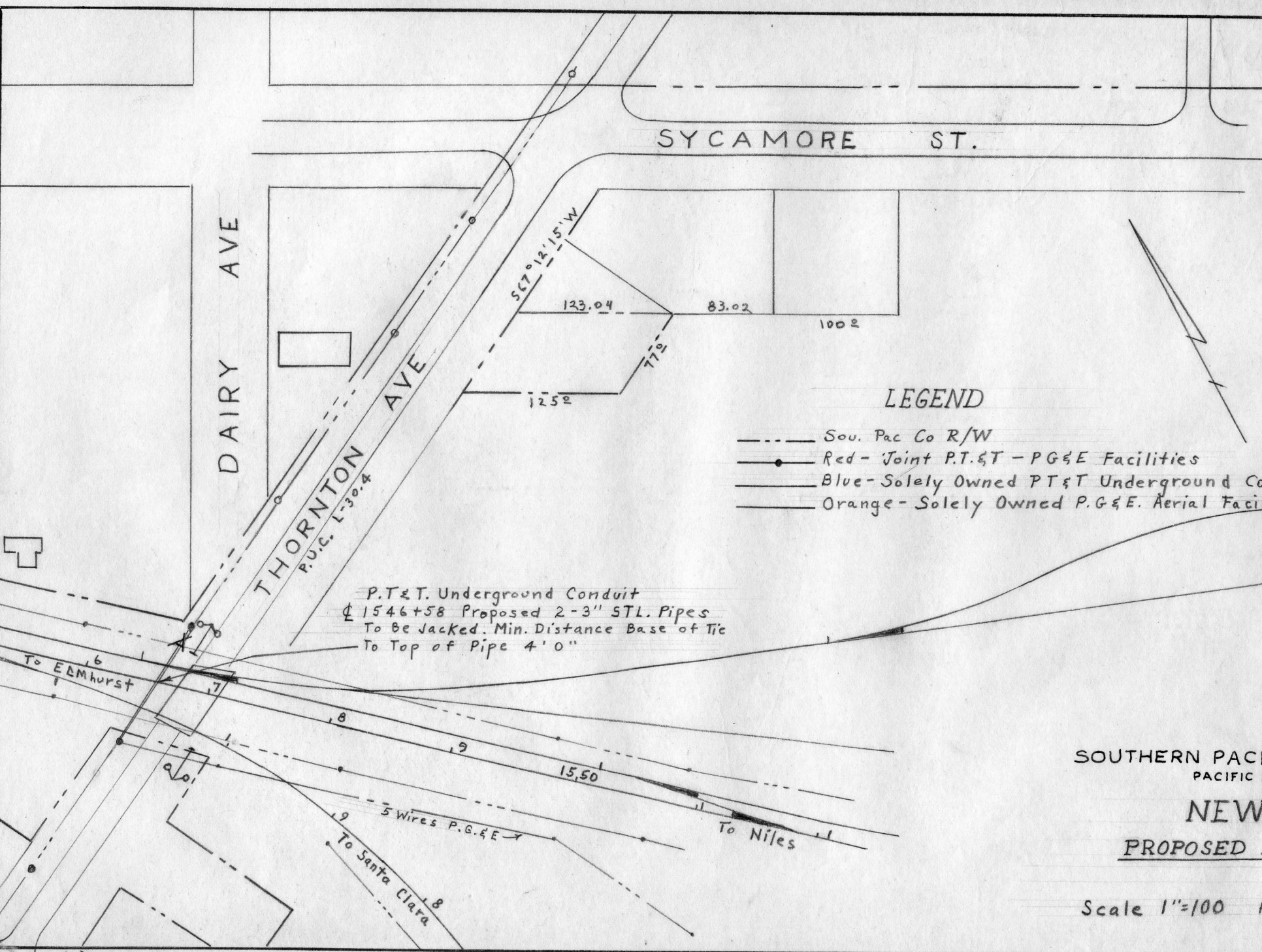


~ LEGEND ~
 - - - - - Sou. Pac. Co. Right of Way
 ———— Red - Gov't. owned Track on
 S.P. Co. Right of Way

SOUTHERN PACIFIC COMPANY
 PACIFIC LINES

WEST ALAMEDA
 PROPOSED CROSSOVER

Scale 1"=100 FMY Nov. 9, 1951



LEGEND

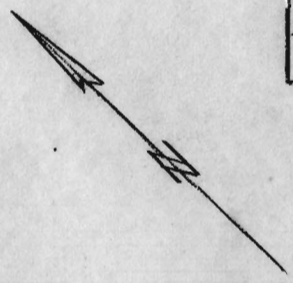
- Sou. Pac Co R/W
- Red - Joint P.T.&T - PG&E Facilities
- Blue - Solely Owned PT&T Underground Conduit
- Orange - Solely Owned P.G.&E. Aerial Facilities

P.T.&T. Underground Conduit
 \$ 1546+58 Proposed 2-3" STL. Pipes
 To Be Jacked. Min. Distance Base of Tie
 To Top of Pipe 4' 0"

SOUTHERN PACIFIC COMPANY
 PACIFIC LINES

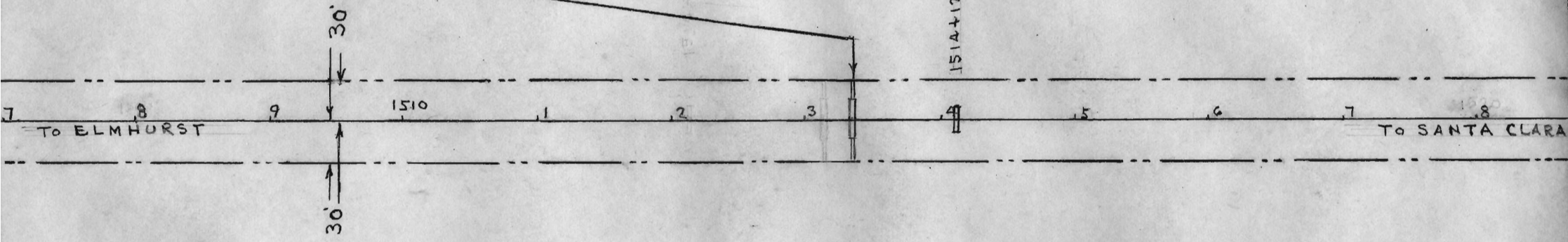
NEWARK
 PROPOSED AGREEMENT

Scale 1"=100 Fc May 27, 1959



1513+36 & 27" Dia. Class IV Reinforced Concrete Pipe 60'
Encased in 30' of a 48 inch Dia. Welded Steel
Pipe (3/8" Gauge) Casing; Base of Tie to Top
of Pipe to be not less than 8'
Casing to be Jacked

151A+129 & 2' x 3' CRCO. BOX 20' No. 29.80



LEGEND

- Southern Pacific Co. - Right of Way
- Proposed Pipe Crossing
- Southern Pacific Co. - Right of Way
- Proposed Pipe Crossing

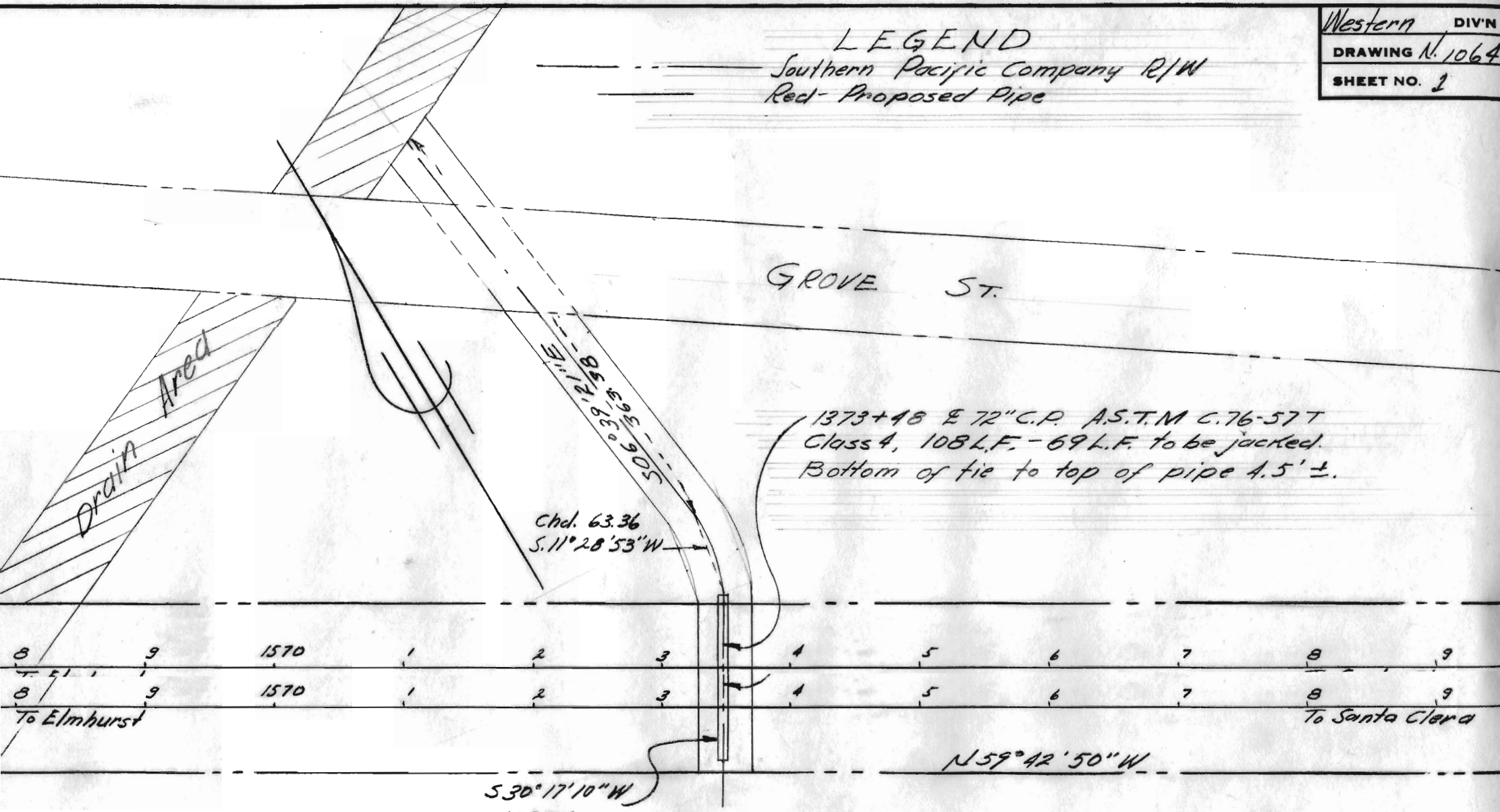
SOUTHERN PACIFIC COMPANY
PACIFIC LINES

NEWARK (WEST OF)

PROPOSED SEWER PIPE CROSSING

Scale 1" = 100' April 1, 1959

LEGEND
 Southern Pacific Company R/W
 Red - Proposed Pipe



SOUTHERN PACIFIC COMPANY
 PACIFIC LINES

NEWARK
 Proposed Pipe X-1113

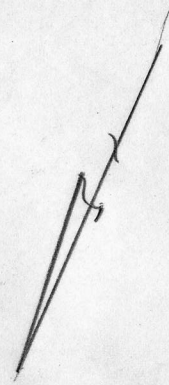
Scale: 1" = 100' Nov. 30, 1959

ST.

ST.

ST.

Proposed 6" Water Pipe in
 50" 12" Casing E.S. 299+80±



To Newark

To Redwood Jct.

DAB-36.8

Water Tank

DAB-36.7

SPRUCE

POPLAR

- LEGEND -

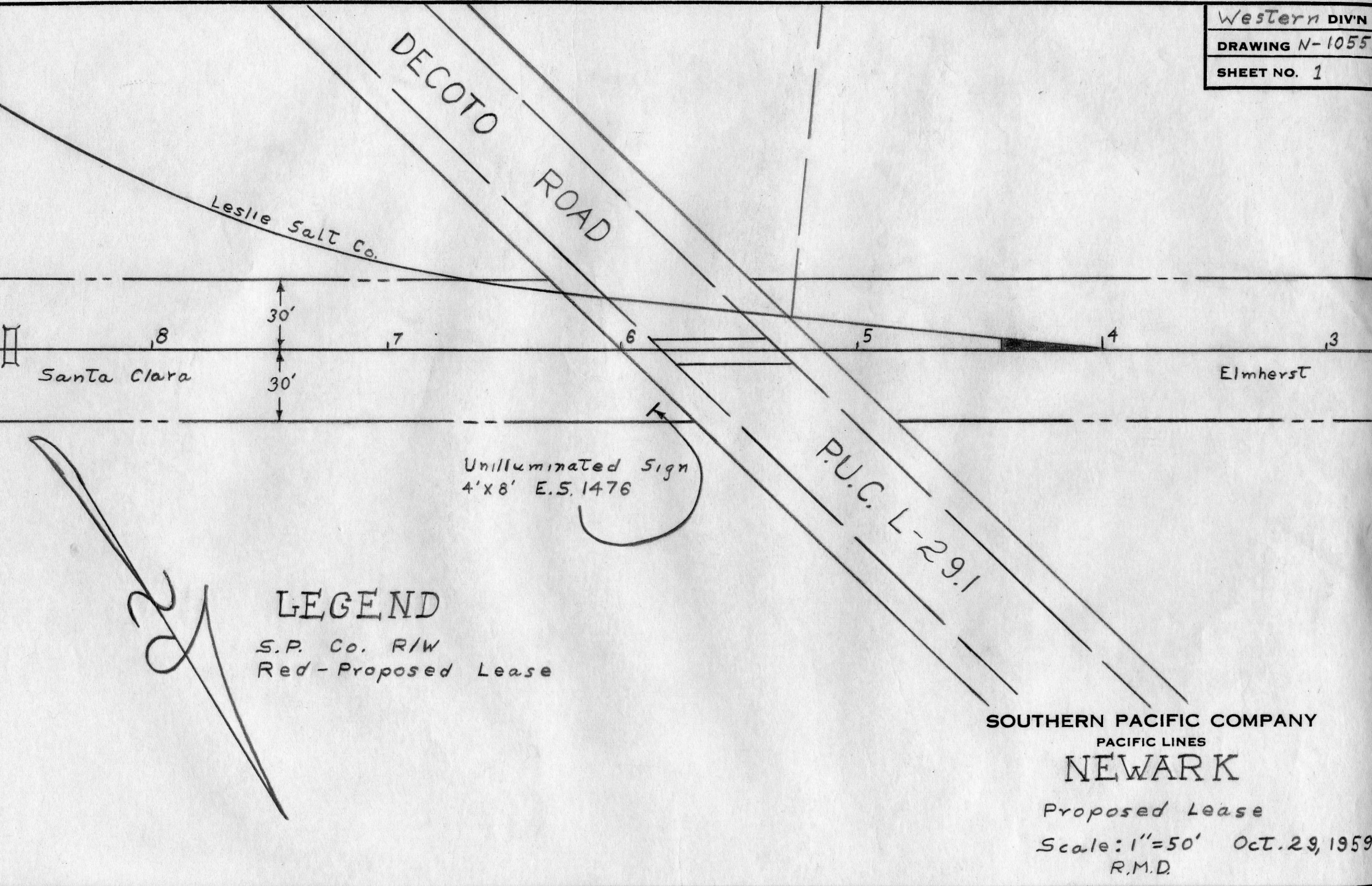
- - - - - Sou. Pac. Co. R/W
- Red - Proposed Pipe X-ing

SOUTHERN PACIFIC COMPANY
 PACIFIC LINES

NEWARK

PROPOSED PIPE CROSSING

Scale 1"=100' Jan. 22, 1954
 FMY

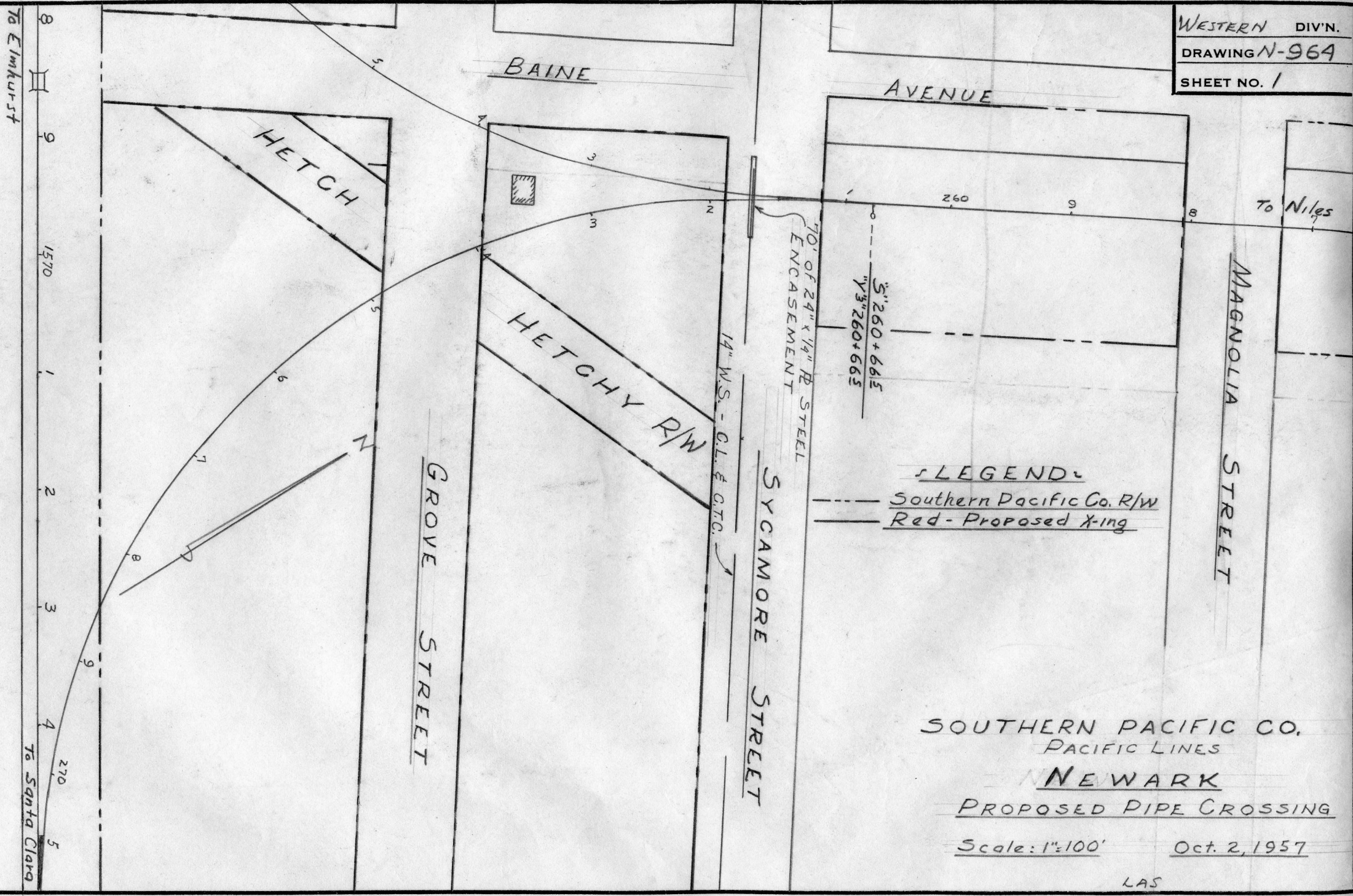


LEGEND

S.P. Co. R/W
 Red-Proposed Lease

SOUTHERN PACIFIC COMPANY
 PACIFIC LINES
NEWARK

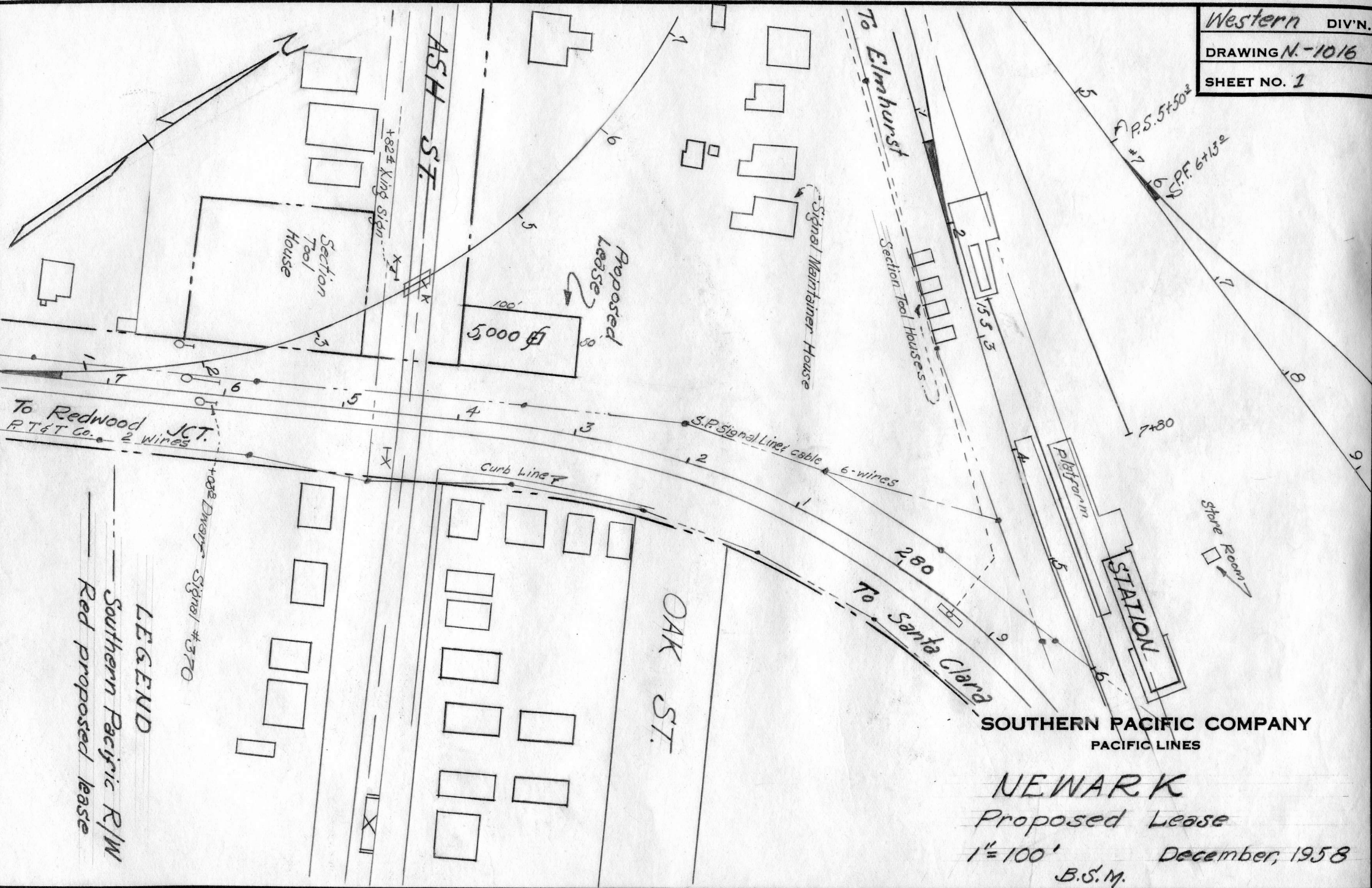
Proposed Lease
 Scale: 1"=50' Oct. 29, 1959
 R.M.D.



SOUTHERN PACIFIC CO.
 PACIFIC LINES
 NEWARK
 PROPOSED PIPE CROSSING

Scale: 1"=100' Oct. 2, 1957

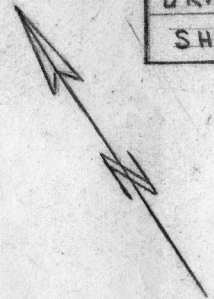
LAS
 DRAWER



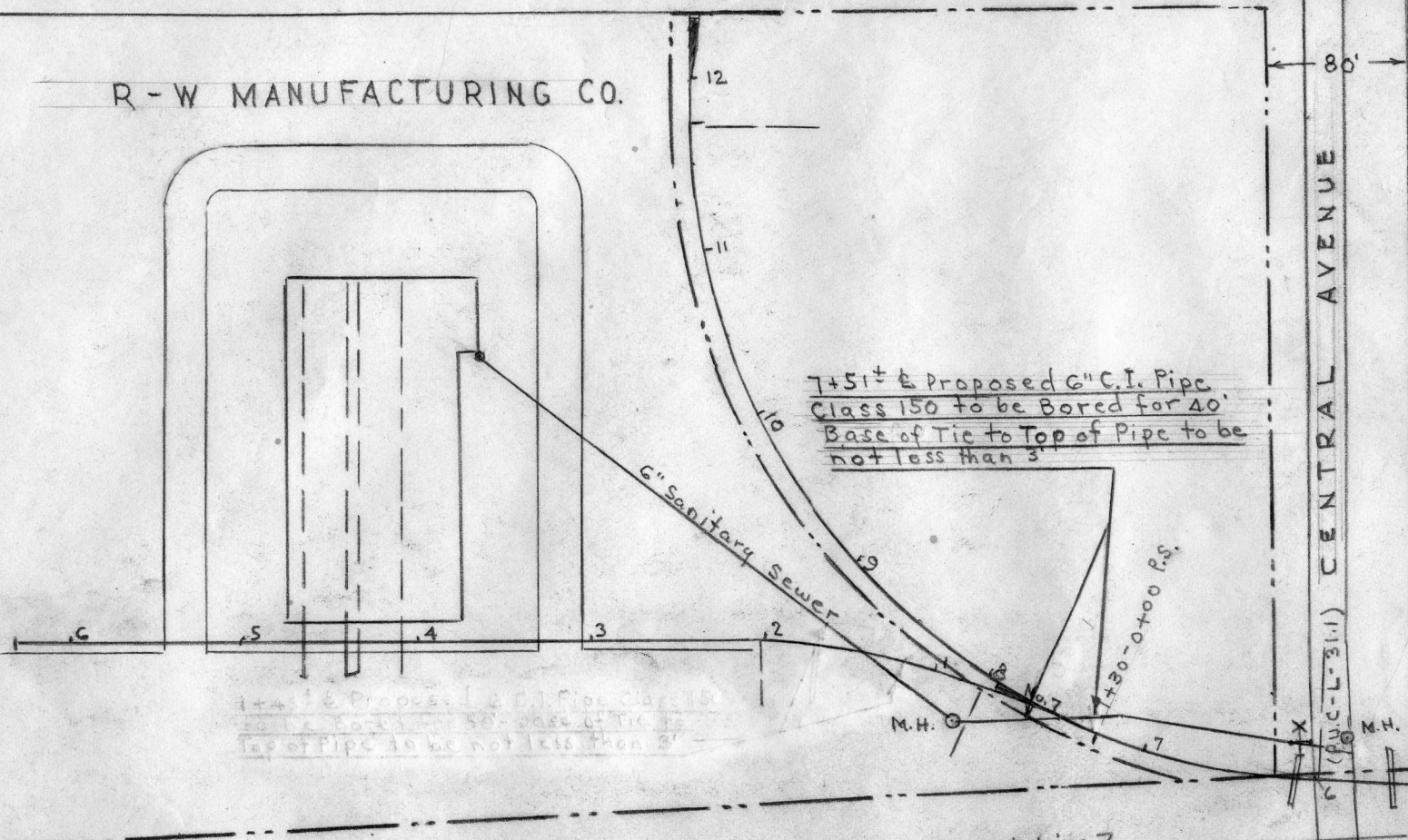
LEGEND
 Southern Pacific R/W
 Red proposed lease

SOUTHERN PACIFIC COMPANY
 PACIFIC LINES

NEWARK
 Proposed Lease
 1" = 100'
 December, 1958
 B.S.M.



R - W MANUFACTURING CO.



7+51± & Proposed 6" C.I. Pipe
Class 150 to be Bored for 40'
Base of Tie to Top of Pipe to be
not less than 3'

1+4± & Proposed 6" C.I. Pipe Class 150
to be Bored for 50'- base of Tie to
Top of Pipe to be not less than 3'

To Elmhurst

Signal Line

W.U. Tel. Line

To Santa Clara

CENTRAL AVENUE

80'

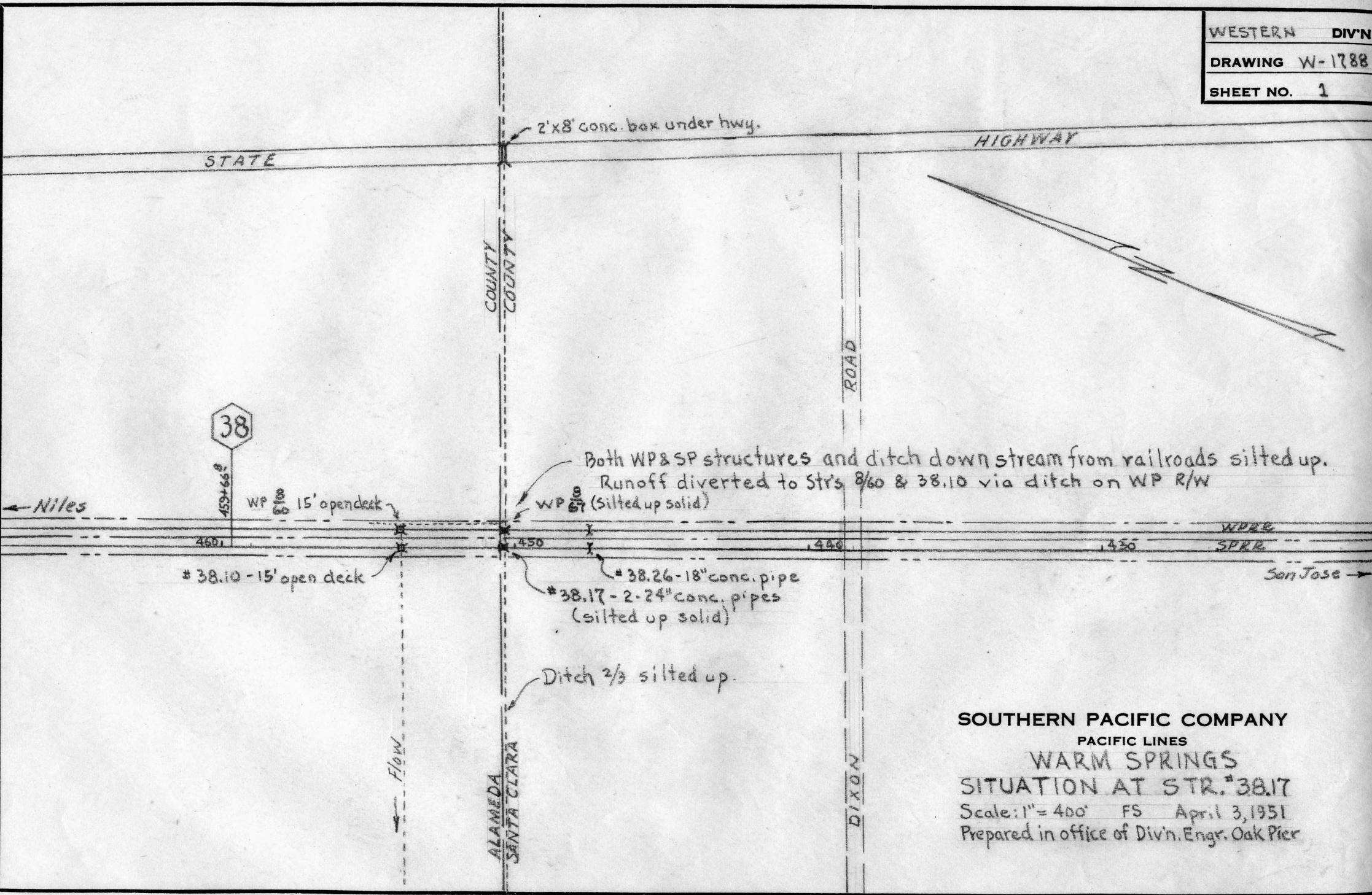
LEGEND
 - - - - Southern Pacific Co. - Right of Way
 = = = = Red - Proposed Pipe Crossing

SOUTHERN PACIFIC COMPANY
PACIFIC LINES

NEWARK

PROPOSED 6" SEWER PIPE CROSSING

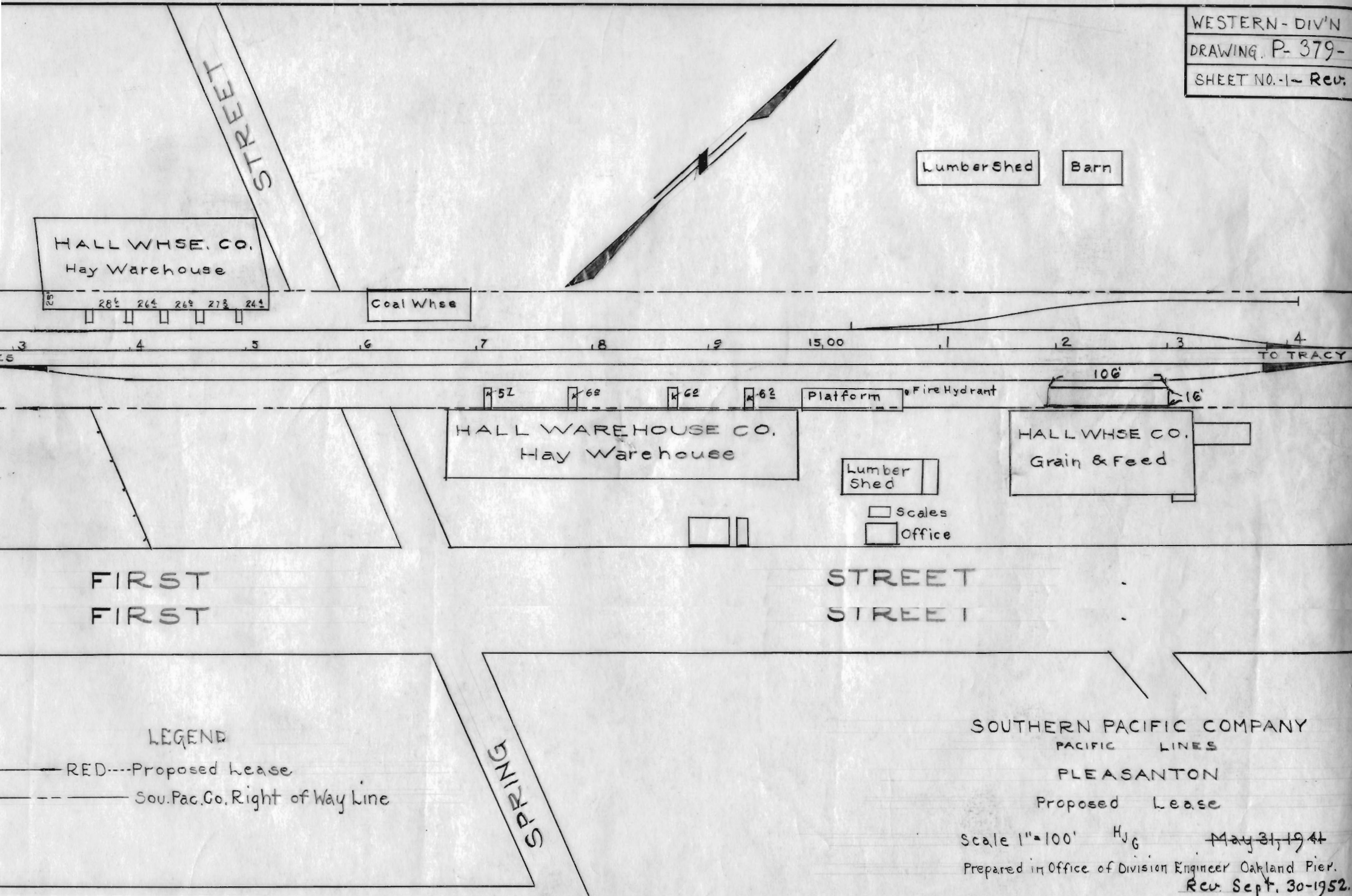
Scale 1" = 100' February 18, 1959



Both WP & SP structures and ditch down stream from railroads silted up.
 Runoff diverted to Strs 38.60 & 38.10 via ditch on WP R/W

SOUTHERN PACIFIC COMPANY
 PACIFIC LINES
 WARM SPRINGS
 SITUATION AT STR. #38.17
 Scale: 1" = 400' FS April 3, 1951
 Prepared in office of Div'n. Engr. Oak Pier

WESTERN-DIV'N
 DRAWING P-379-
 SHEET NO. 1- Rev.



HALL WHSE. CO.
 Hay Warehouse

Coal Whse

Lumber Shed

Barn

HALL WAREHOUSE CO.
 Hay Warehouse

HALL WHSE CO.
 Grain & Feed

Lumber Shed

Scales
 Office

FIRST
 FIRST

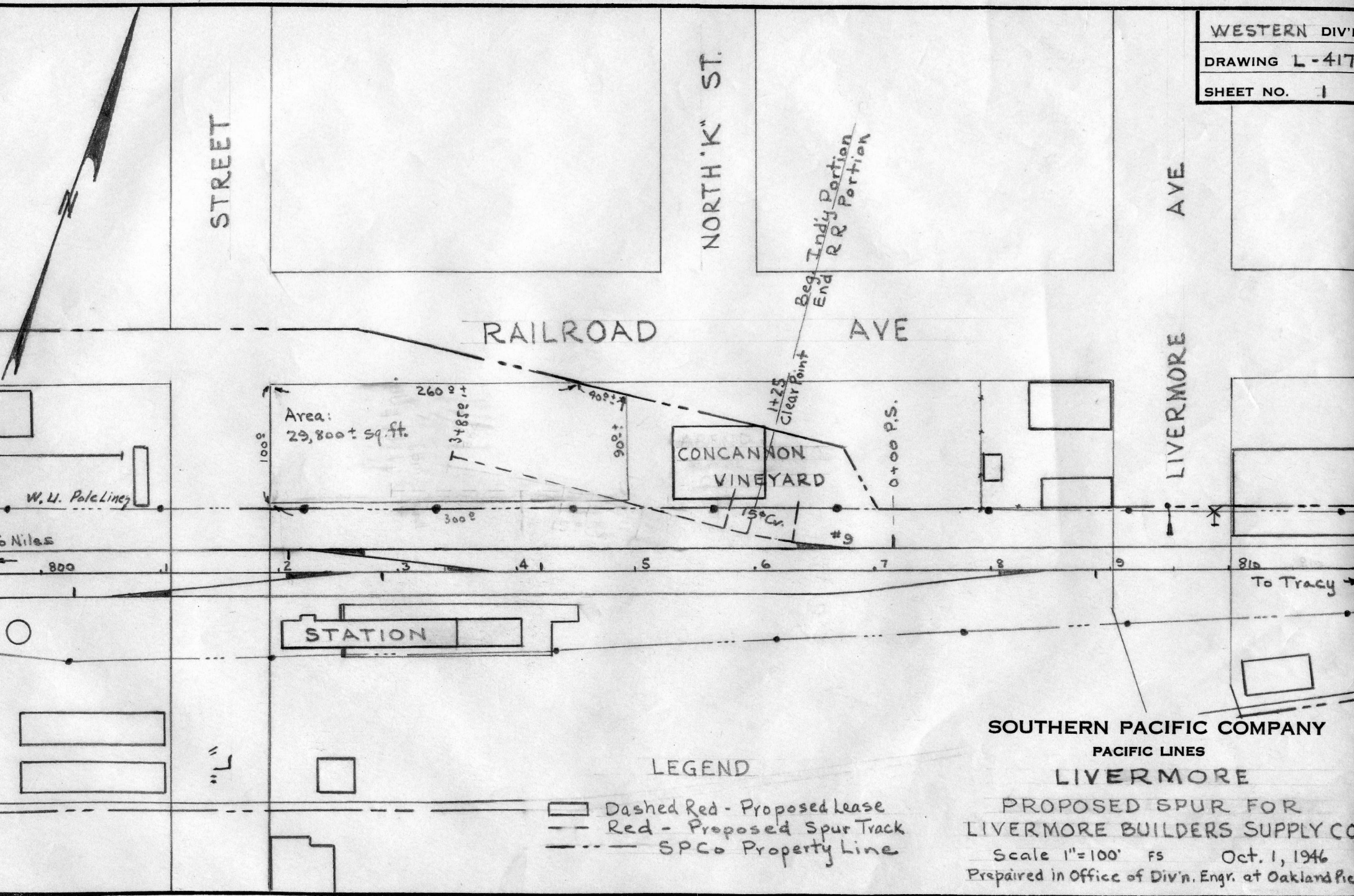
STREET
 STREET

LEGEND

RED---Proposed Lease
 --- Sou. Pac. Co. Right of Way Line

SOUTHERN PACIFIC COMPANY
 PACIFIC LINES
 PLEASANTON
 Proposed Lease

Scale 1"=100' HJG May 31, 1941
 Prepared in Office of Division Engineer Oakland Pier.
 Rev. Sept. 30-1952.



LEGEND

- Dashed Red - Proposed Lease
- Red - Proposed Spur Track
- SPCo Property Line

SOUTHERN PACIFIC COMPANY
PACIFIC LINES
LIVERMORE

PROPOSED SPUR FOR
LIVERMORE BUILDERS SUPPLY CO.
Scale 1"=100' FS Oct. 1, 1946
Prepared in Office of Div'n. Engr. at Oakland Pier