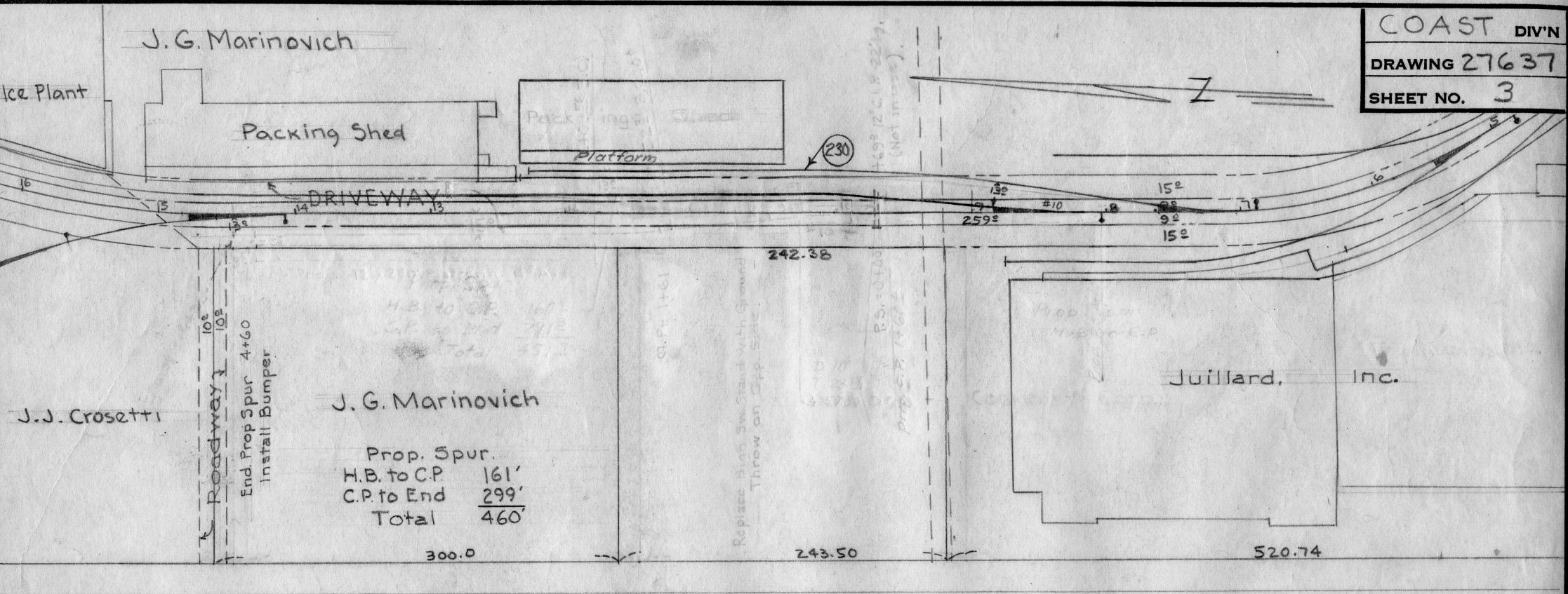


Southern Pacific Company Engineering Drawings

The following drawings are copies of originals produced by SPCo draftsmen. They were created either from blank forms, or from copies of earlier drawings, using pencil and/or ink, and were not colorized. They subsequently were copied, and the copies were then hand-colored for forwarding to the appropriate parties for review.

Within any geographic location, such as a city or town, the images are placed in in the PDF in no particular order. When the file contains several geographic locations, they are ordered north-to-south.

You are free to use the contents of this PDF as you see fit. If you republish any of these images, we request that you email us notification at wx4org@yahoo.com and give us a credit line stating *Image Courtesy of Wx4.org*.

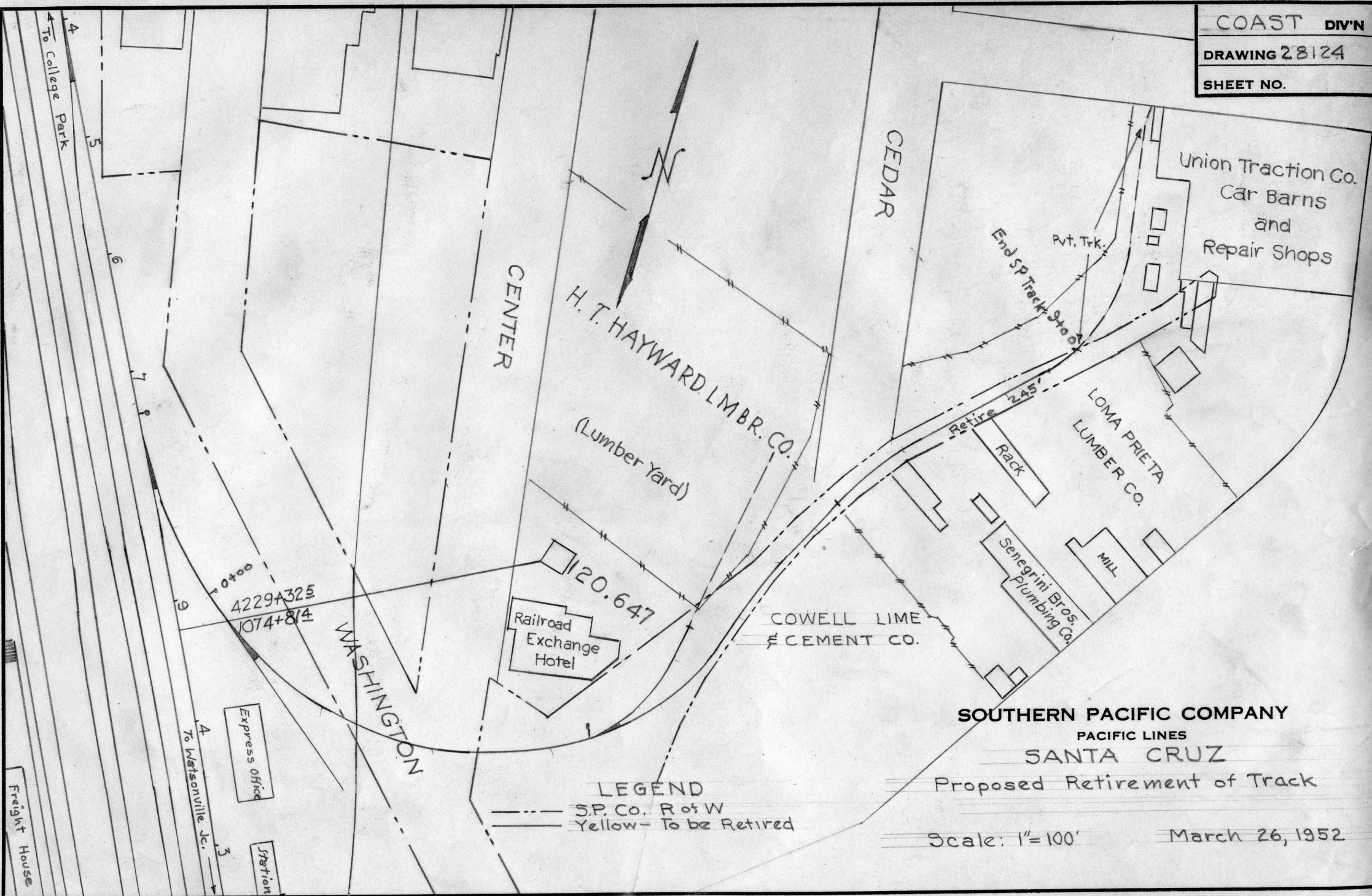


MONTEREY ROAD

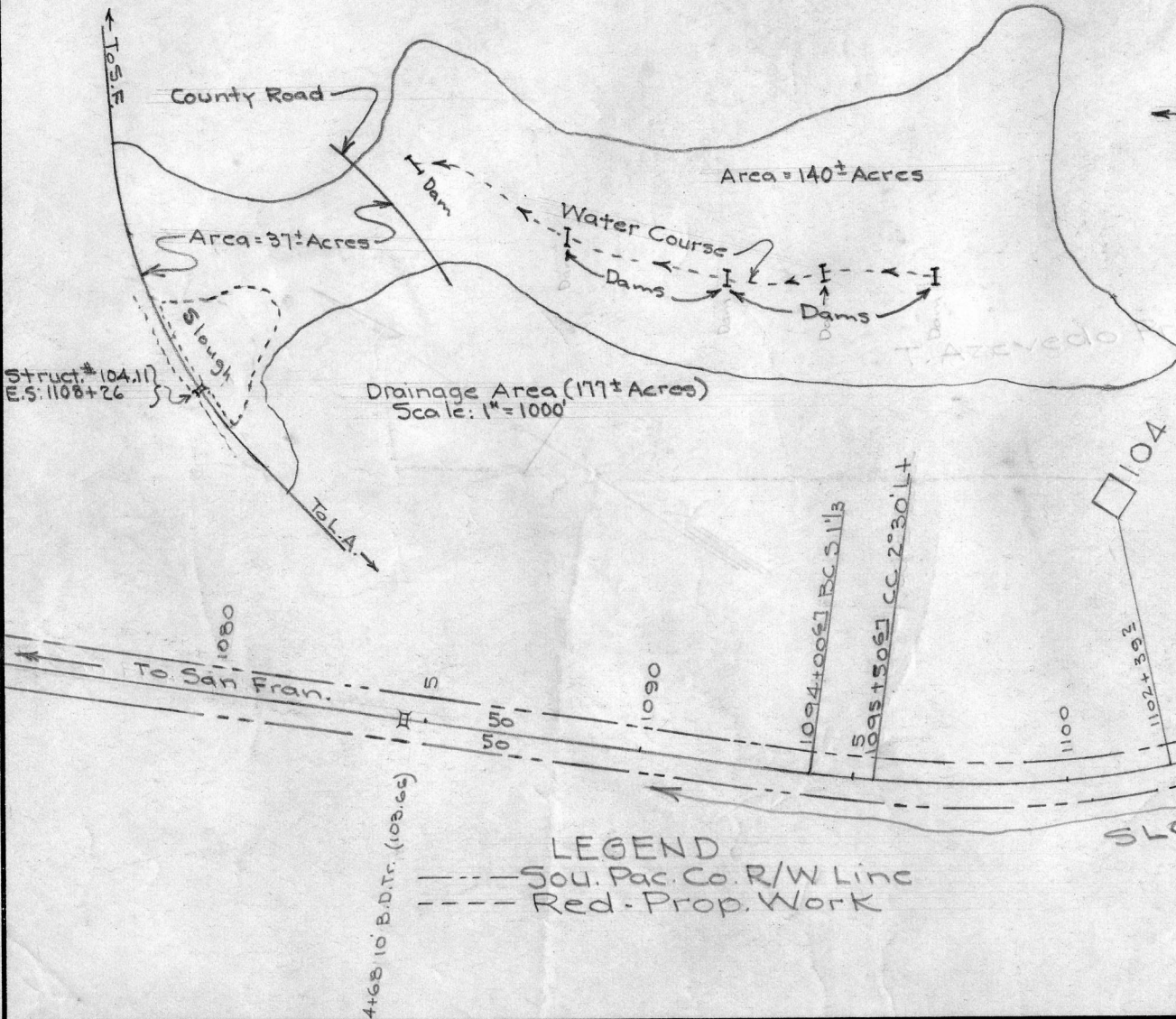
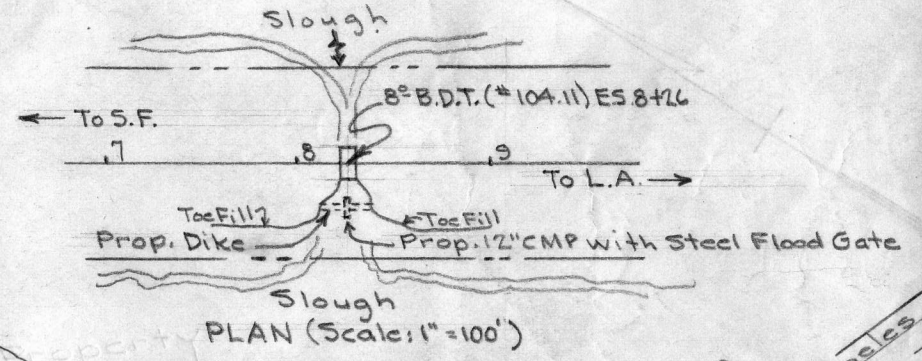
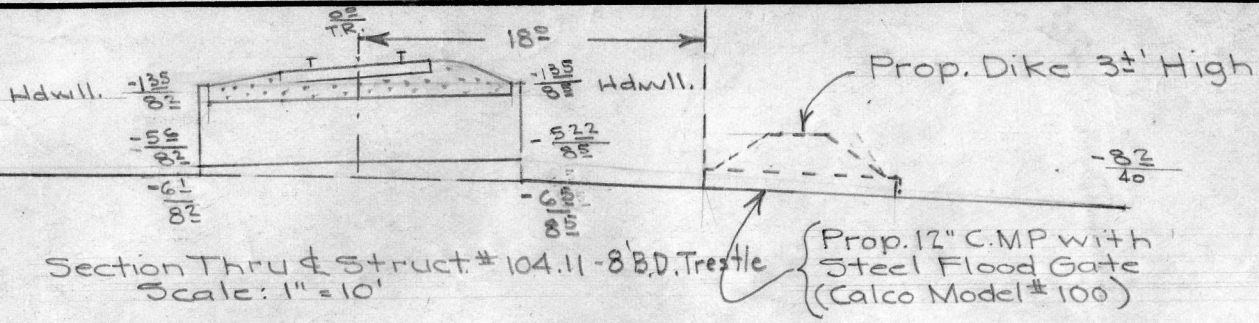
Legend
 - - - - - Sou. Pac. R/W
 Yellow: To be Retired

SOUTHERN PACIFIC COMPANY
PACIFIC LINES
WATSONVILLE JCT.
 Prop. Retirement of Trackage
 Serving J.G. Marinovich
 Scale: 1"=100' Dec. 19 1956

COAST DIV'N
DRAWING 28124
SHEET NO.

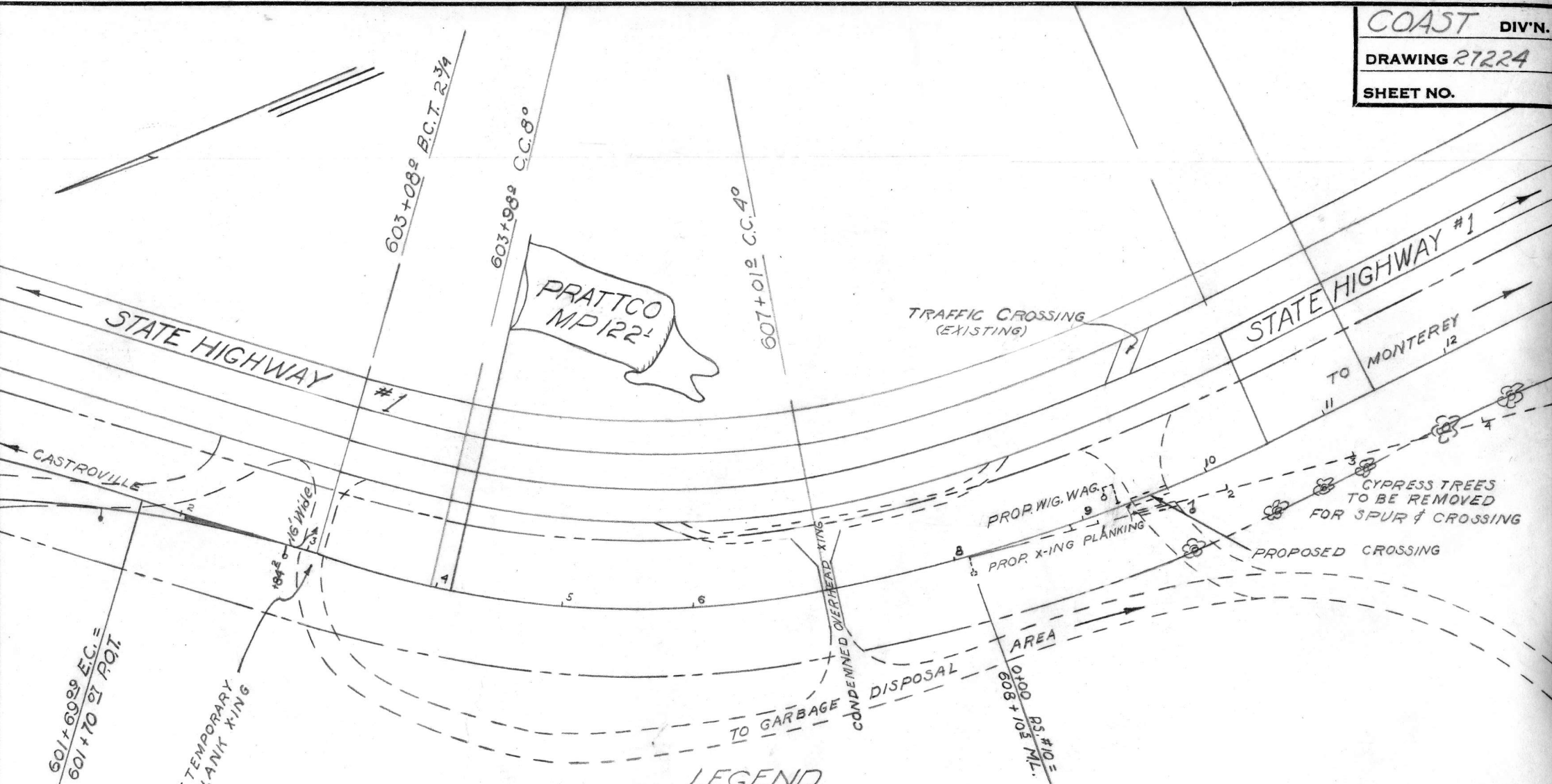


DRAWER



LEGEND
 - - - - - Sou. Pac. Co. R/W Line
 - - - - - Red-Prop. Work

SOUTHERN PACIFIC COMPANY
 PACIFIC LINES
 ELKHORN
 Proposed Flood Gate at
 Structure # 104.11 to Serve
 T. Azevedo
 Scale: 1"=400' Dec. 11, 1950



LEGEND

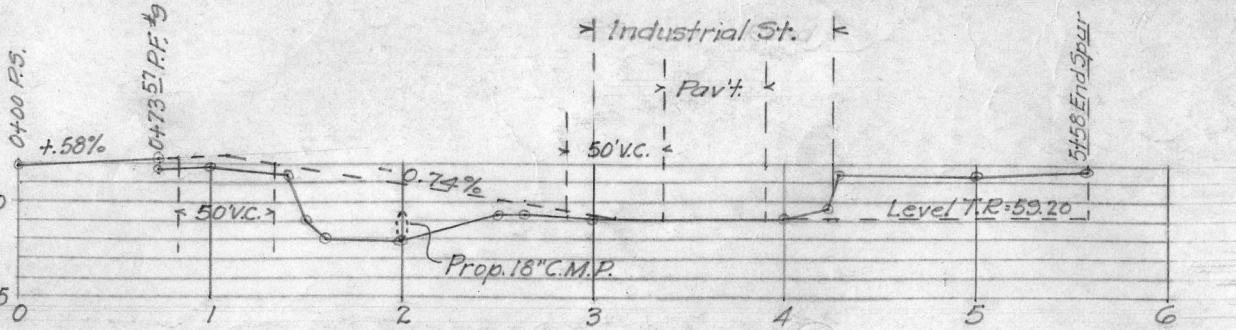
- SOU. PAC. R.W.
- RED: PROP. WORK
- TINT: PROP. LEASE
- YELLOW: TO BE REMOVED

SOUTHERN PACIFIC COMPANY
 PACIFIC LINES
PRATTCO
 PROPOSED PRIVATE CROSSING

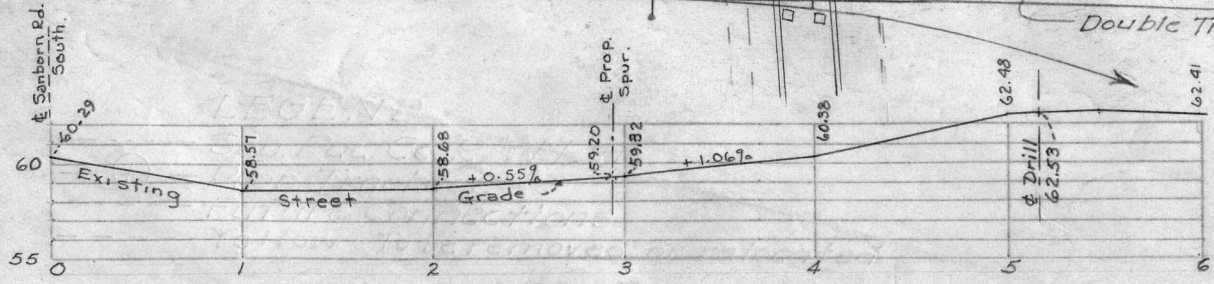
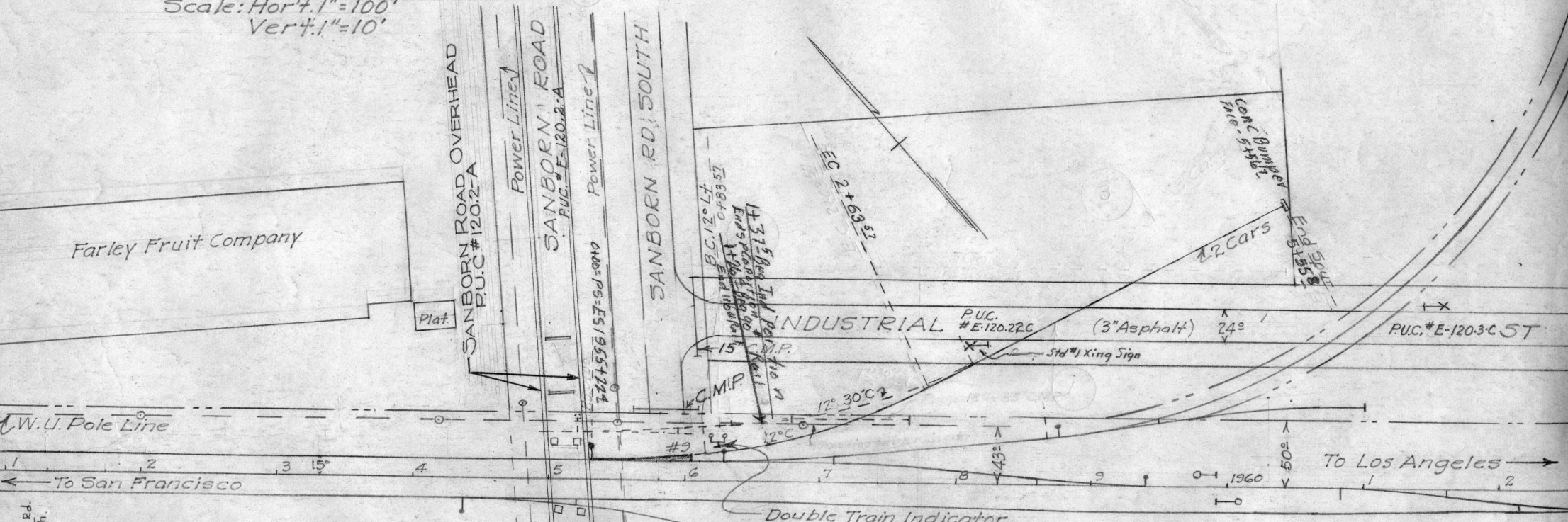
SCALE 1"=100' D.H.T. MAY 20, '46

~ LEGEND ~

- Southern Pacific Co. R/W Line
- Red-Trackage Owned and Maintained by Railroad
- Green-Future Connections
- Yellow-To be removed or relocated
- Mauve-Trackage Owned and Maintained by Industry



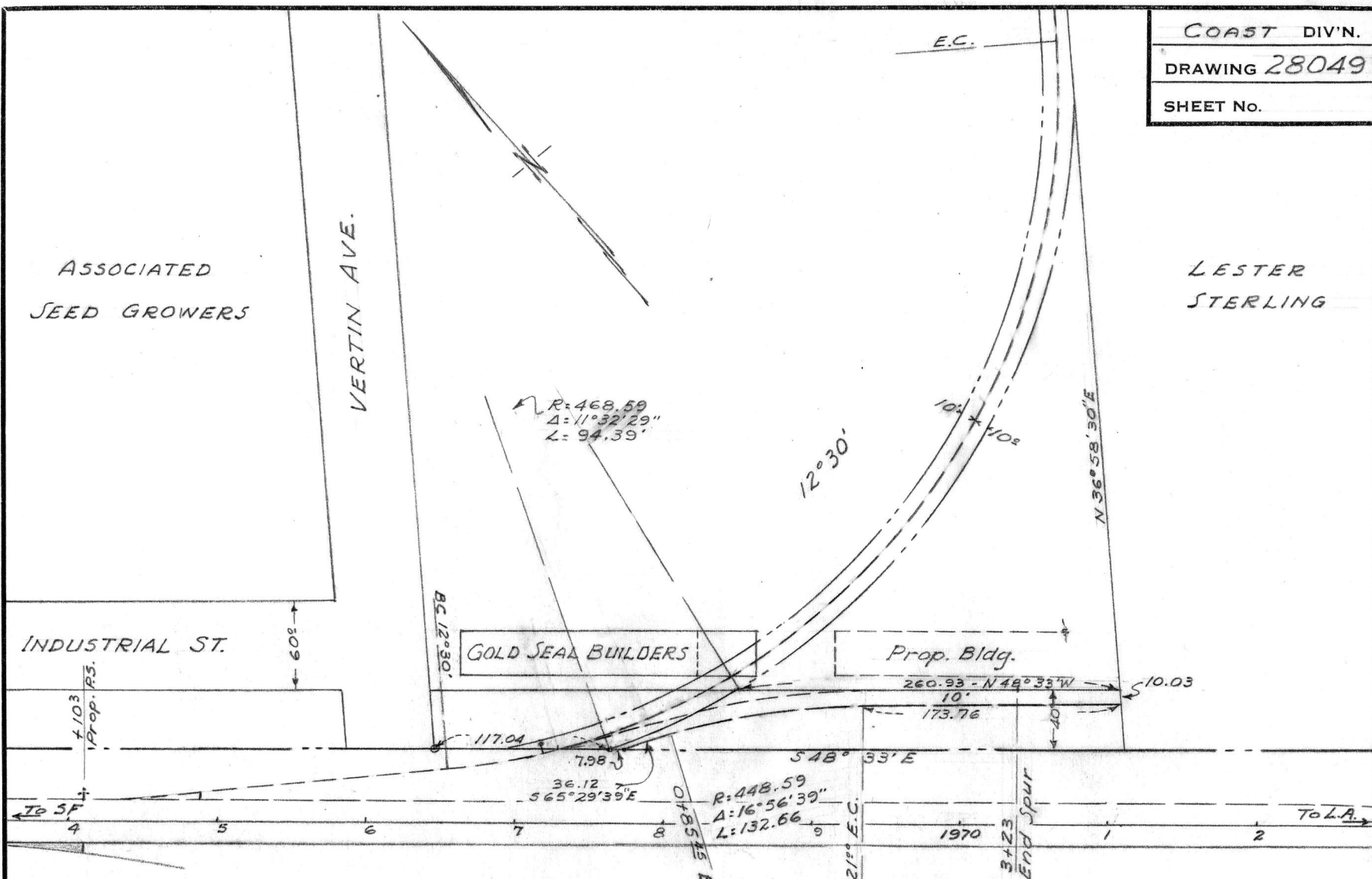
PROFILE PROPOSED SPUR
Scale: Hor. 1"=100'
Vert. 1"=10'



PROFILE - INDUSTRIAL ST.
Scale: Horiz. 1"=100', Vert. 1"=10'

SOUTHERN PACIFIC COMPANY
PACIFIC LINES
SPRECKELS JCT.
Trackage Serving Georgia
Pacific Plywood Co.

Scale: 1"=100'
Rev. 5-20-53
Dec. 7, 1950
Dec. 26, 1950
April 9, 1952



ASSOCIATED
SEED GROWERS

LESTER
STERLING

VERTIN AVE.

INDUSTRIAL ST.

GOLD SEAL BUILDERS

Prop. Bldg.

LEGEND

- So. Pac. Co. R/W.
- [Tint] Red-Easement to be acquired (0.081 Act)

SOUTHERN PACIFIC COMPANY

PACIFIC LINES

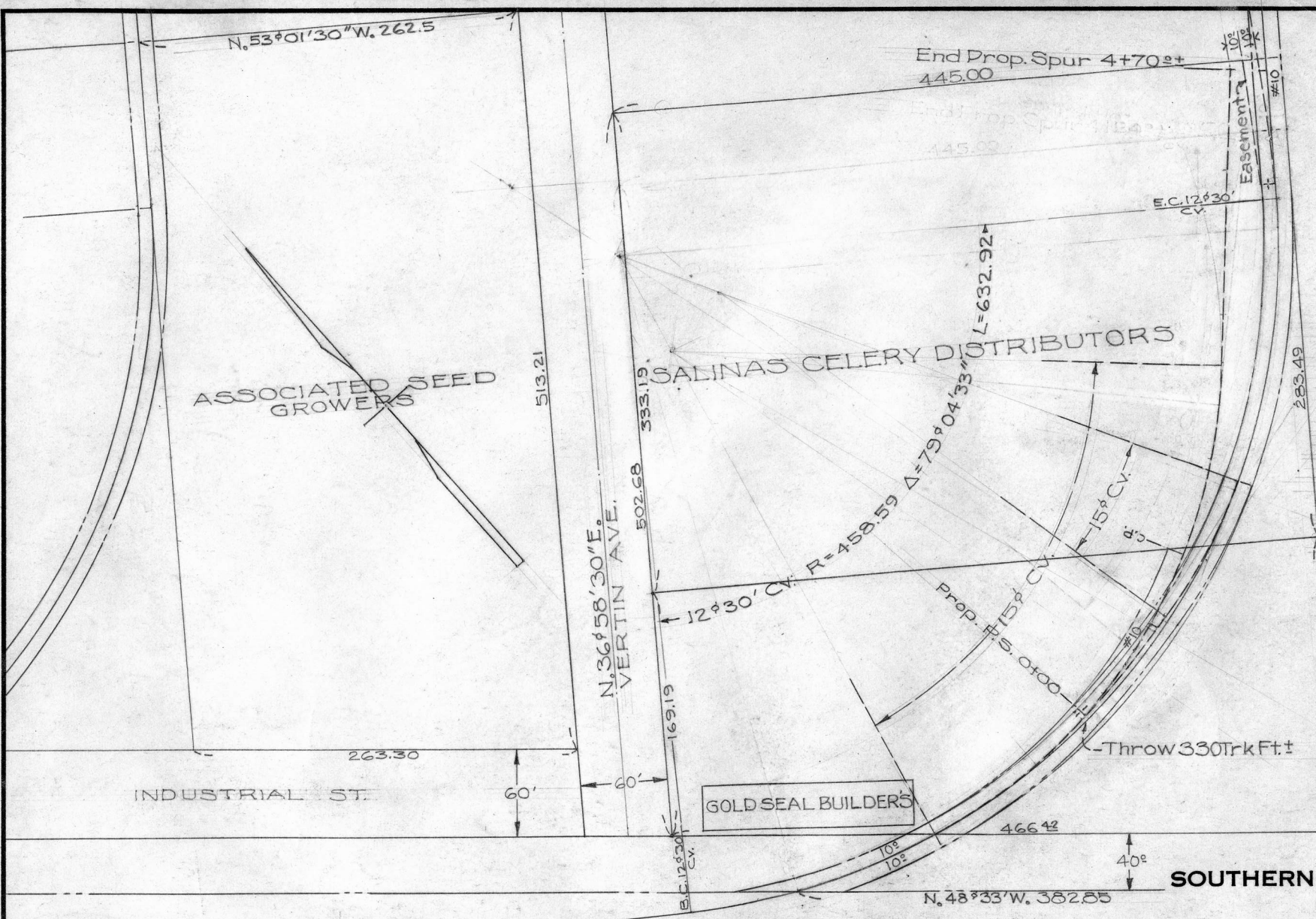
SPRECKELS JCT.

Proposed Trackage to Serve
GOLD SEAL BUILDERS

Scale 1"=100' J.J.Z. June 12, 1951

LEGEND

- Sou. Pac. Co. R/W
- - - Red: Proposed Spur
- - - Dashed Yellow Throw to
- - - Dashed Red
- [] Drill Track R/W to be Acquired
- [] Additional R/W for Proposed Spur
- - - Green: Future Spur
- [] Easement to be Acquired for Future Spur



LESTER STERLING

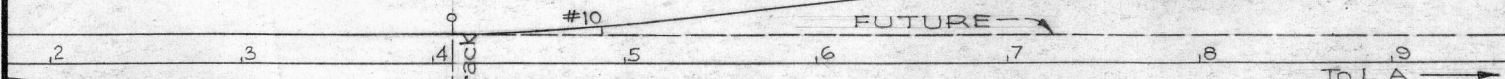
SOUTHERN PACIFIC COMPANY
PACIFIC LINES

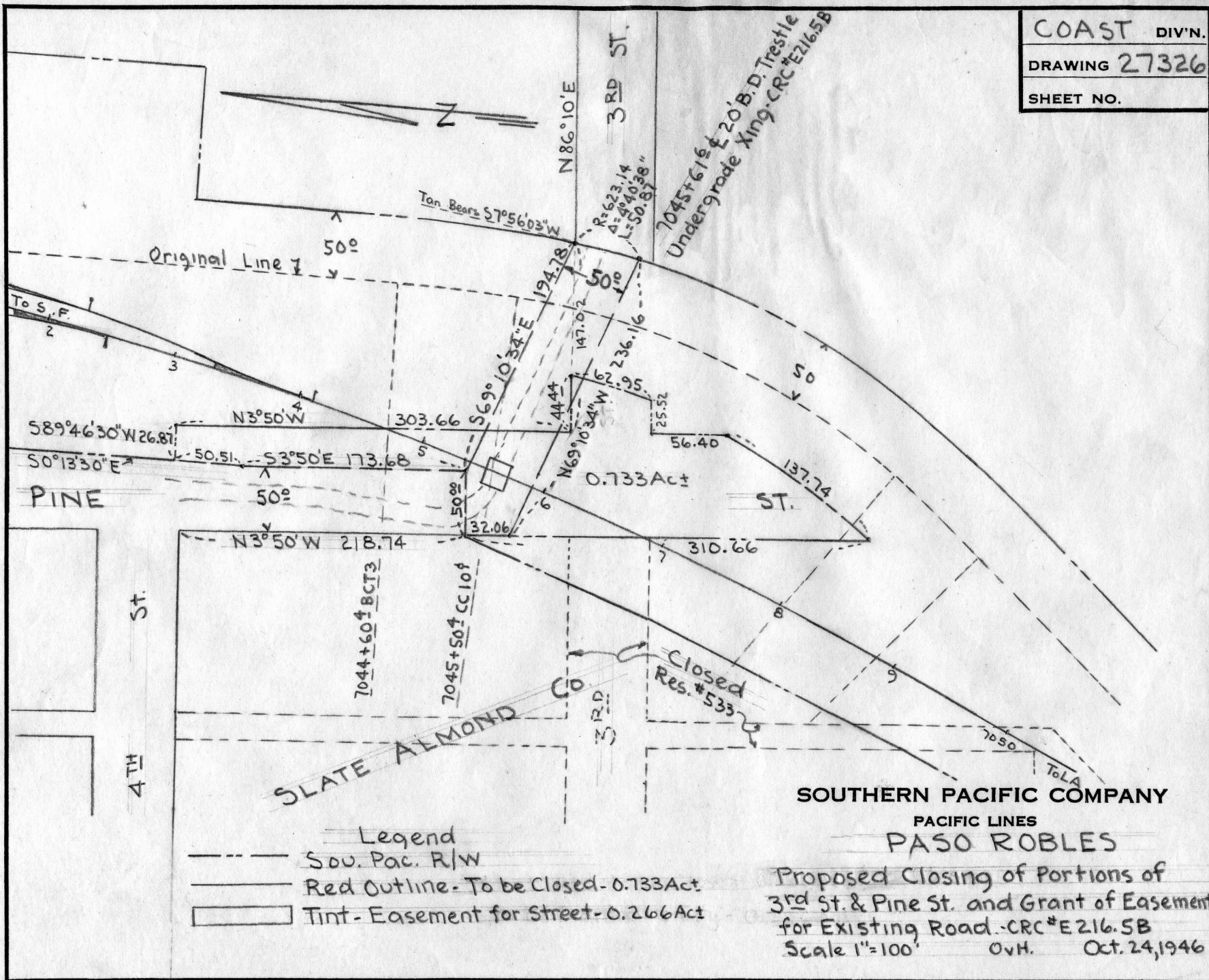
SPRECKELS JCT.

Proposed Spur to Serve:
Salinas Celery Distributors

Scale 1" = 100' JDM Feb. 5, 1952
March 5, 1952

1964+103 =
0+00 Drill Track

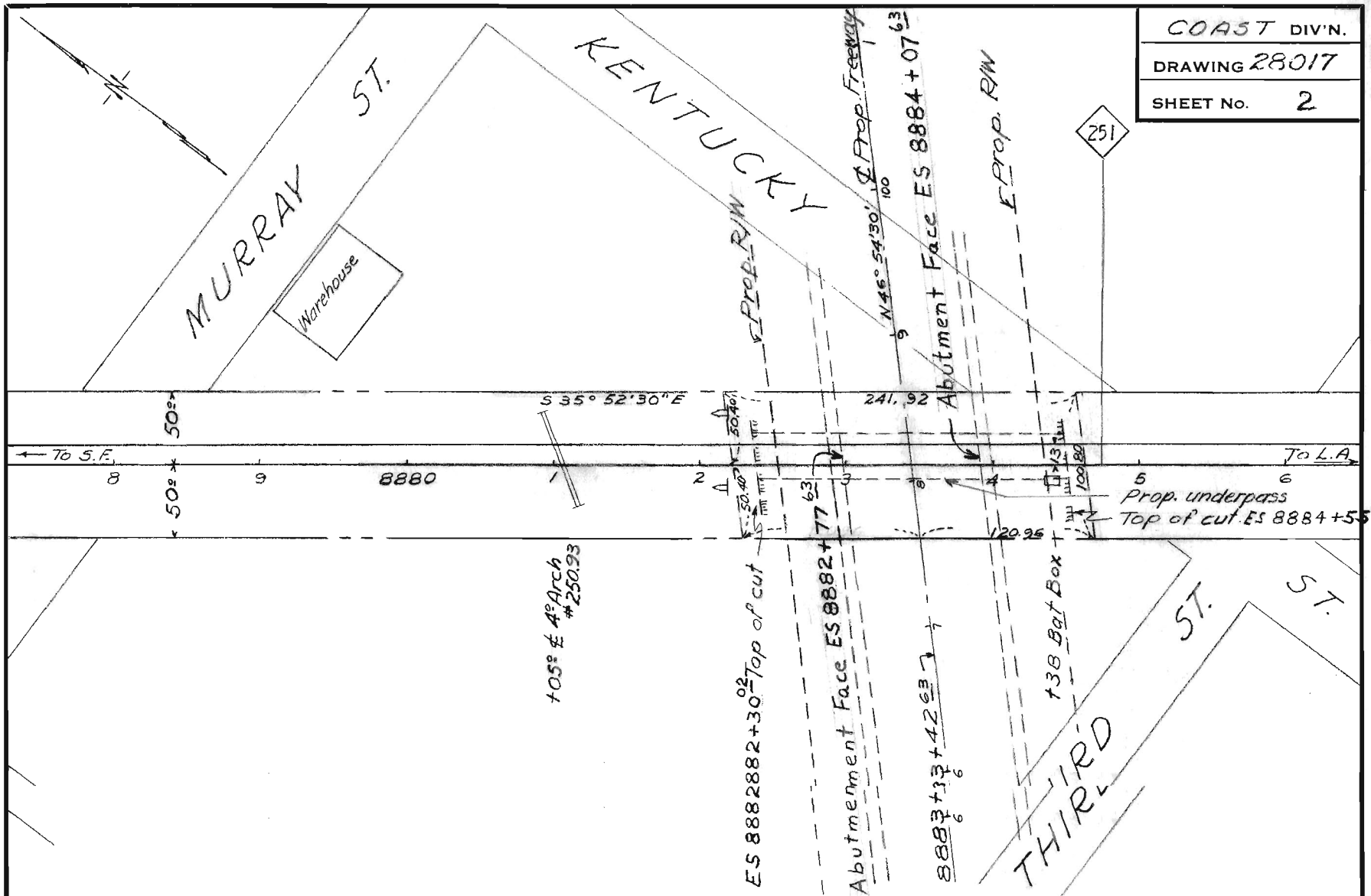




- Legend
- Sou. Pac. R/W
 - Red Outline - To be Closed - 0.733 Act
 - Tint - Easement for Street - 0.266 Act

SOUTHERN PACIFIC COMPANY
 PACIFIC LINES
PASO ROBLES

Proposed Closing of Portions of
 3rd St. & Pine St. and Grant of Easement
 for Existing Road - CRC #E216.5B
 Scale 1"=100' O.V.H. Oct. 24, 1946



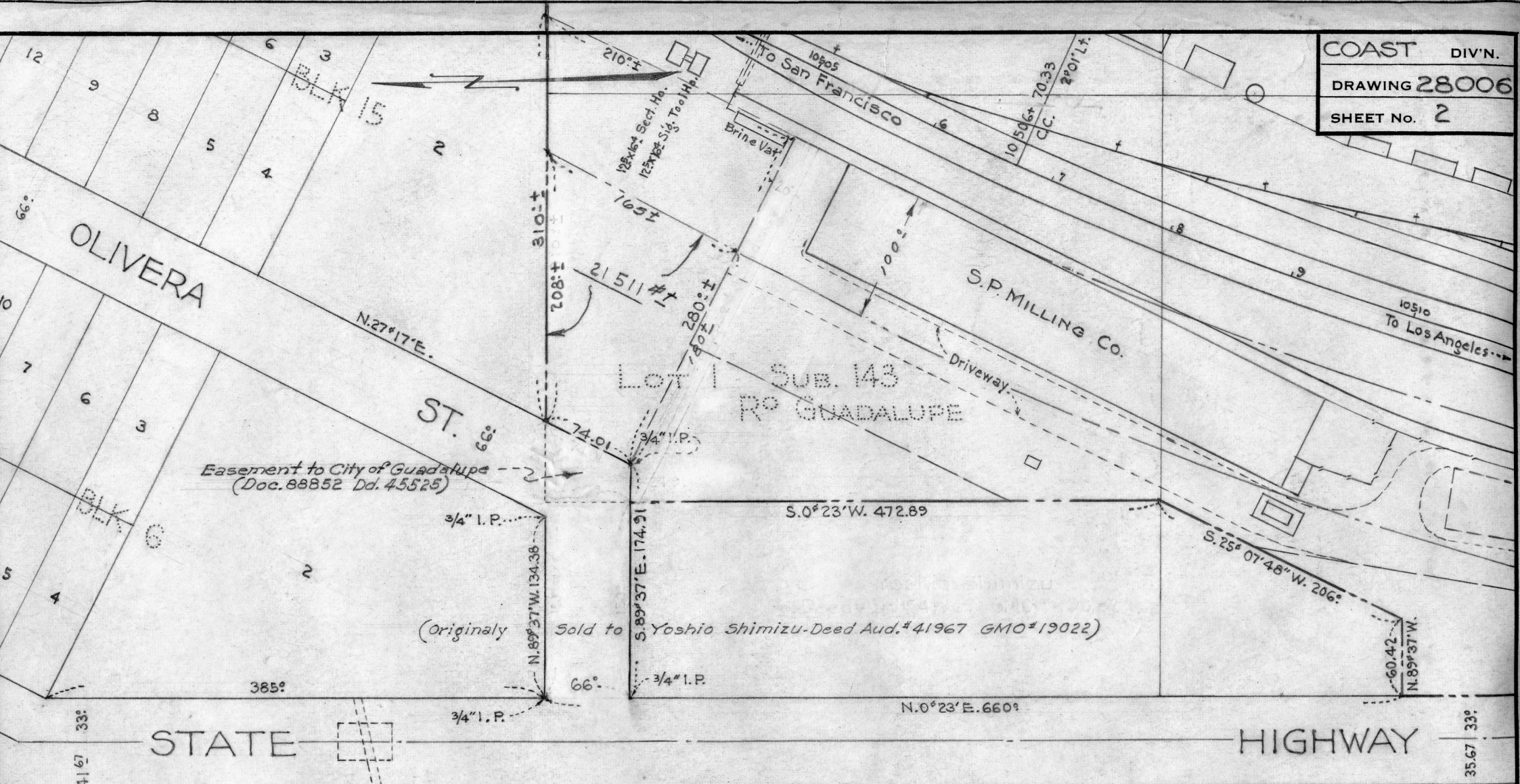
LEGEND

- So. Pac. R/W Line.
- Yellow Embankment Retired

SOUTHERN PACIFIC COMPANY
PACIFIC LINES
HATHAWAY

Embankment replaced by Underpass

Scale 1"=100' JJZ. Jan. 25, 1951.
Nov 30, 1954



Easement to City of Guadalupe
 (Doc. 88852 Dd. 45525)

(Originally Sold to Yoshio Shimizu-Deed Aud.#41967 GMO#19022)

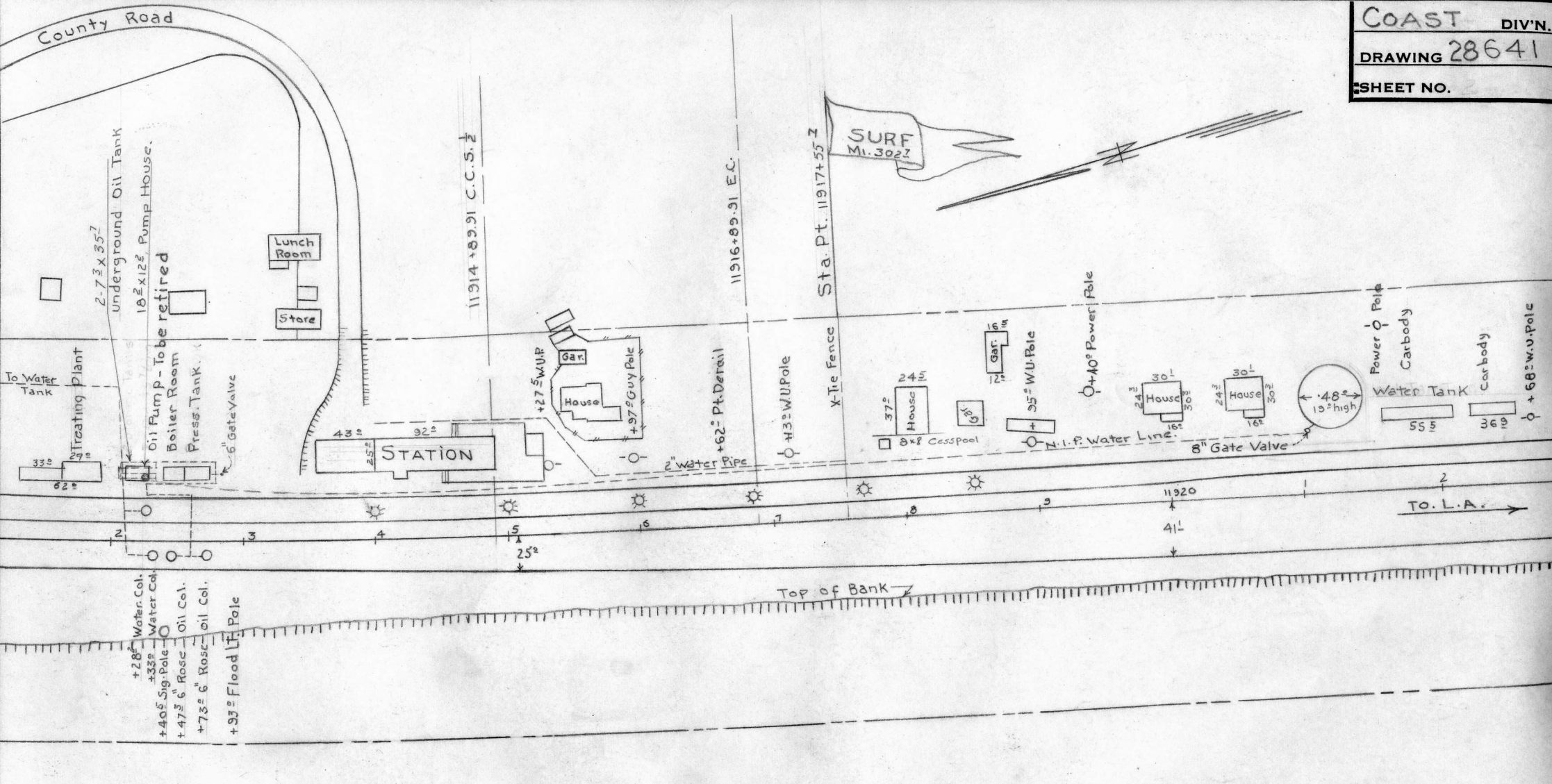
Lot 2 Sub 145

6'x8' Conc. Box Culvert

LEGEND

- Sou.Pac.Right of Way
- Yellow: Prop.Sale of property (38363 ± = 0.88 Ac.±)
- Red: Proposed
- Blue: Area Restricted By Deed Condition (Audit #30593)

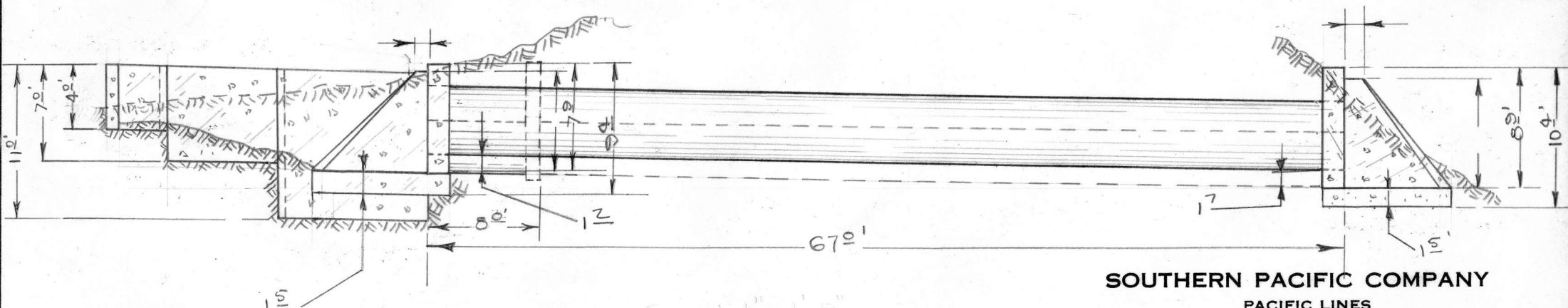
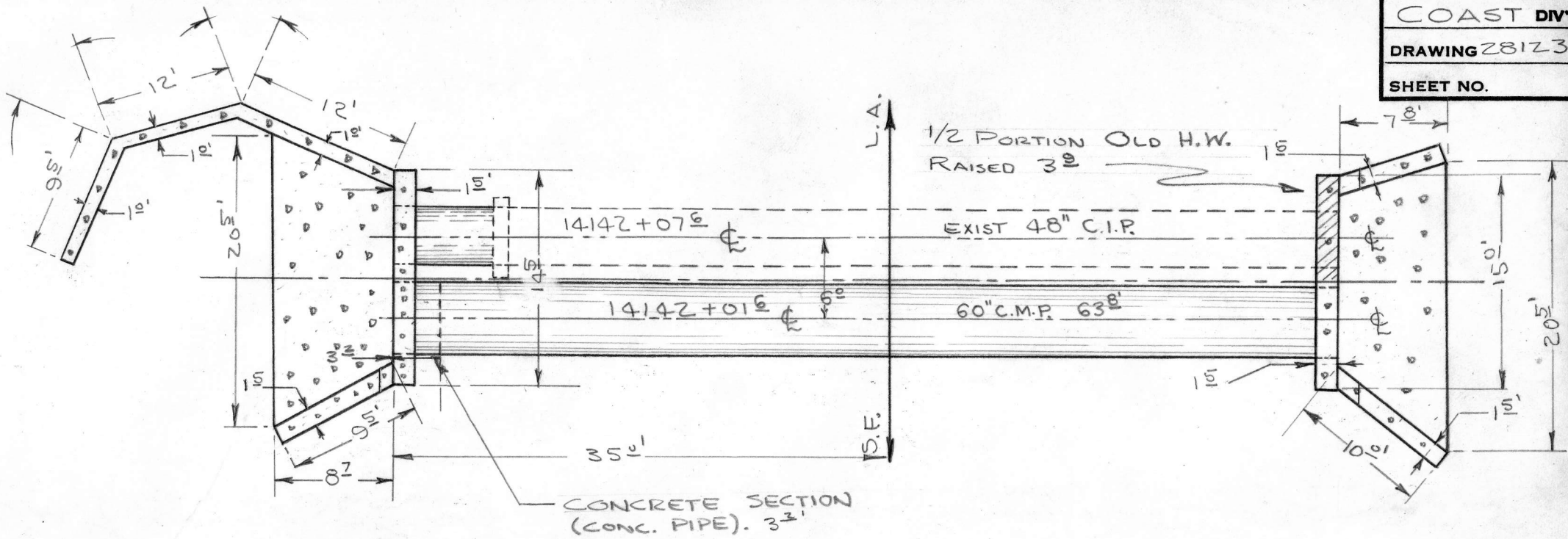
SOUTHERN PACIFIC COMPANY
 PACIFIC LINES
GUADALUPE
 Proposed Sale of Property To
 Paul Kurokawa
 Scale: 1" = 100'
 Nov. 18, 1957
 Dec. 28, 1957.
 Dec. 28, 1957.



SOUTHERN PACIFIC COMPANY
 PACIFIC LINES
 SURF

LEGEND
 - - - - - S.P. Property Line
 - - - - - Yellow; To be Abandoned

Prop. Abandonment of Fuel Oil Facilities
 Scale: 1" = 100'
 Nov. 2, 1953 June 10, 1955
 Nov. 3, 1953 Rev. June 20, 1955
 Feb. 5, 1954 Rev. June 23, 1955
 June 1, 1955



SOUTHERN PACIFIC COMPANY
PACIFIC LINES

TAJIGUAS
60" CULVERT - STR. # 344.54
SCALE: 1" = 1'-0 3-24-52