



TIME TABLE



THE

Katy

SERVES THE
SOUTHWEST



MISSOURI • KANSAS
OKLAHOMA • TEXAS



TIME TABLE



THE

Katy

SERVES THE
SOUTHWEST



MISSOURI • KANSAS
OKLAHOMA • TEXAS

SOUTHWEST

...on Parade!

THE KATY serves ...

Austin • Dallas • Fort Worth
Galveston • Houston • Muskogee
Oklahoma City • San Antonio
Tulsa • Waco • Wichita Falls

...with outstanding trains for com-
fort travel and for the prompt,
expeditious movement of freight.

**FAST
FREIGHTS..**

Free pick-up and
delivery of L.C.L.
freight.

**FINE, FAST
PASSENGER
TRAINS...**

To travel any-
where... to ship
anything... just
phone any Katy
Agent.

Serves the
SOUTHWEST -
Through
ST. LOUIS and KANSAS CITY





MISSOURI-KANSAS-TEXAS RAILROAD CO. MISSOURI-KANSAS-TEXAS RAILROAD CO. OF TEXAS BEAVER, MEADE & ENGLEWOOD RAILROAD CO.



INDEX TO TIME TABLES AND STATIONS

All time tables in this Folder are lettered or numbered—the letter or number of table is shown opposite station in Index below. Indicates where interline tickets are on sale. *Flag stops, not shown in tables. *Freight service only. *Automobiles may be shipped from or to this station on passenger ticket plan.

INDEX OF CONTENTS

Table with 2 columns: Item and Page. Includes: Automobiles checked (19), Baggage Allowance (19), Condensed through schedules (4-6-7), Connecting train service (18-19), Consist of Limited Trains (5), Dining Car Meals (11-14-17), Industrial Department (19), Fast Freight Service (21), Gen'l Information for Psgrs. (19), Limited train stops (19), Map (12-13), Optional Routes (12), Railway Express Agency (8), Roster of Representatives (3), Sleeping car charges (28), Stopover Privileges (6), Tickets by Telegraph (18), Western Union Telegraph (17).

Table A: List of stations and table numbers. Includes: Abbott, Tex. 7; Acampo, Tex. 25; Adair, Okla. 6; Adlecks, Tex. 8; Agra, Okla. 10; Alba, Tex. 23; Albany, Tex. 25; Alexander, Tex. 25; Altama, Okla. 12; Altus, Okla. 19-20; Alvarado, Tex. 7; Amerlus, Tex. 11; Angola, Okla. 10; Appalachia, Okla. 12; Appleton City, Mo. 2; Aquilla, Tex. 25; Arcadia, Okla. 10; Argyie, Tex. 7; Atoka, Okla. 7; Aubrey, Tex. 6-9; Augusta, Tex. 7; Austin, Kan. 11; Austin, Tex. 9; Avoca, Tex. 25.

Table B: List of stations and table numbers. Includes: Bacon, Tex. 19; Baker, Okla. 19-A; Barker, Tex. 8; Bartlesville, Okla. 7; Bastrop, Tex. 8-9; Bateman, Tex. 17; Bayard, Kan. 9; Beagle, Kan. 9; Beaman, Mo. 1; Beaver, Okla. 19-A; Bells, Tex. 7-9; Belton, Tex. 21; Big Cabin, Okla. 6; Blue Jacket, Okla. 6; Blue, Kan. 11; Bonita, Tex. 15; Boonville, Mo. 1; Brinkman, Okla. 19; Bristol, Kan. 11; Broken Arrow, Okla. 12; Brookshire, Tex. 8; Bruceville, Tex. 8; Brushwood, Mo. 3; Bryson, Mo. 1-4; Bud Matthews, Tex. 25; Burk Burnett, Tex. 25; Burlison, Tex. 7; Burlington, Kan. 11; Burton, Mo. 2; Burton, Okla. 19-A; Burt, Okla. 19.

Table C: List of stations and table numbers. Includes: Cleveland, Okla. 10; Clinton, Mo. 1; Coffeyville, Kan. 10; Cokedale, Kan. 13; Colbert, Okla. 6; Collinsville, Tex. 7; Columbia, Mo. 1-3; Columbus, Kan. 13; Comal, Tex. 8; Comyn, Tex. 25; Coppens, Tex. 16; Council Grove, Kan. 11; Coupland, Tex. 8; Cowata, Okla. 12; Cross Plains, Tex. 26; Crowder, Okla. 6-9; Cushing, Okla. 10-12; Dallas, Tex. 17; Deaton, Tex. 17; Dederick, Mo. 3; Deerfield, Tex. 26-26; Denison, Tex. 8; Devol, Okla. 19; Dewey, Okla. 10; Dickinson, Tex. 8-18; Dixon, Tex. 23; Doolin, Okla. 19-A; Downing, Kan. 11; Drumb, Okla. 14; Dumas, Tex. 20; Dunlap, Okla. 19; Durant, Okla. 19; East Lynne, Mo. 4; Echo, Okla. 21; Eddy, Tex. 8; Egan, Tex. 7; Eldorado Springs, Mo. 5; Elgin, Tex. 8-9; Elk City, Okla. 19; Ellsworth, Tex. 22; Elm Mott, Tex. 7; Elsmore, Kan. 9; Emory, Tex. 23; Emporia, Kan. 11; Erie, Kan. 11; Estill, Mo. 2; Eufaula, Okla. 6-9; Eva, Okla. 19-A; Fall City, Mo. 13; Falls, Okla. 10; Farmers Branch, Tex. 16-A; Fate, Tex. 7; Fayette, Mo. 2; Fayetteville, Tex. 8; Fenwick, Mo. 4; Fleming, Kan. 13; Florida, Okla. 19-A; Forgan, Okla. 19; Forreston, Tex. 7; Fort Scott, Kan. 1; Fort Worth, Tex. 2; Fort Worth, Mo. 1; Ft. Worth, Mo. 1; Clearing, Tex. 23.

Table D: List of stations and table numbers. Includes: Franklin, Mo. 1-2; Frederick, Okla. 19; Freeman, Mo. 4; Gainesville, Tex. 13; Galena, Kan. 13; Galveston, Tex. 11; Garden Ridge, Mo. 1-6-8-9-18-24; Garland, Tex. 7-9; Gas, Kan. 15; Gate, Okla. 19; Genoa, Tex. 18; Georgetown, Tex. 8; Gering, Tex. 23; Glenham, Tex. 8; Golden, Tex. 23; Goodrich, Kan. 9; Gorman, Tex. 25; Gould, Okla. 20; Grandfield, Okla. 19; Grandview, Tex. 7; Granger, Tex. 8-9; Greenville, Tex. 1; Gunn City, Mo. 4; Hagerman, Tex. 7; Ballet, Okla. 10; Halstead, Tex. 8; Hamlin, Tex. 25; Hammond, Okla. 19; Handley, Mo. 5; Harrisburg, Tex. 5-18; Harrisonville, Mo. 4; Hartford, Kan. 11; Hartsburg, Mo. 1; Harwood, Mo. 9; Haucke, Kan. 11; Henrietta, Tex. 16; Hepler, Kan. 11; Hertha, Kan. 9; Hester, Okla. 19; Hewitt, Tex. 8; Hiattville, Kan. 1; Hico, Tex. 25; Higbee, Mo. 20; Hillsboro, Tex. 7; Hillsboro, Mo. 4; Hills Prairie, Tex. 8; Hockley, Okla. 11; Holden, Mo. 4; Holland, Tex. 8; Hollis, Okla. 20; Hominy, Okla. 19; Hominy, Okla. 19-A; Hooker, Okla. 19-A; Hopkins, Okla. 19-A; Hough, Okla. 19-A; Houston Heights, Tex. 2; Houston, Tex. 8; Houston, Tex. C. D. G. R. N. O. S. T. 1; Hovey, Okla. 19-A; Hoyt, Tex. 23; Humboldt, Kan. 11; Humphreys, Okla. 19; Iola, Kan. 15; Iredell, Tex. 25; Italy, Tex. 7; Itasca, Tex. 7; Jefferson City, Mo. 1; Jennings, Okla. 10; Jolly, Tex. 16.

Table E: List of stations and table numbers. Includes: Joplin, Mo. 13; Jordan, Tex. 17; Junction City, Kan. 11; Kansas City, Mo. 1; Katy, Tex. 8; Keller, Tex. 7; Kessler, Tex. 20; Keyes, Okla. 19-A; Kimball, Kan. 9; Kincaid, Kan. 9; Kingston, Tex. 7; Kiowa, Okla. 6; Kirtley, Tex. 8; Killeck, Tex. 8; Kline, Okla. 19; Knowles, Okla. 19; Krebs, Okla. 14; Labette, Kan. 6; Ladue, Mo. 1; La Grange, Tex. 6; La Harpe, Kan. 15; Lake Dallas, Tex. 16-A; Lakenon, Tex. 7; La Marque, Tex. 8-18; Lancaster, Tex. 7; Laremore, Tex. 17; Laverne, Okla. 19; League City, Tex. 8-18; Leedey, Okla. 19; Leeton, Mo. 4; Leonard, Tex. 7; Lewis, Mo. 1; Lewisville, Tex. 16-A; Linmerick, Mo. 3; Lindale, Mo. 1; Lindsay, Tex. 16; Little River, Tex. 8; Lockhart, Tex. 17; Lone Oak, Tex. 23; Lorena, Tex. 8; Louisville, Kan. 4; Loveland, Okla. 19; Lueders, Tex. 25; Luther, Okla. 10; McAlester, Okla. 4; McAlister, Okla. 4; McBalme, Mo. 1-3; McKittick, Mo. 1; McQueen, Okla. 20; Machens, Mo. 1; Magnolia, Mo. 4; Mangum, Okla. 19; Mangum, Tex. 25; Martha, Okla. 19; Marthasville, Mo. 1; Matson, Mo. 1; Maxwell, Tex. 17; May, Okla. 19; McAfee, Okla. 6; Mildred, Kan. 9; Milford, Tex. 7; Mineola, Tex. 23; Moberly, Mo. 2; Moccasin, Okla. 19; Mokane, Mo. 1; Montana, Kan. 13; Montrose, Mo. 1; Moody, Kan. 11; Moorewood, Okla. 19; Moran, Kan. 19; Moran, Tex. 25; Moravia, Okla. 19; Morgan, Tex. 25; Mound Valley, Kan. 10; Mouser, Okla. 19-A; Muenster, Tex. 10; Muneys, Okla. 19-A; Muskogee, Okla. 19; Myra, Tex. 16; Nela, Tex. 25; Neosho, Okla. 10; Nevada, Mo. 1-5; New Braunfels, Tex. 8-9; New Franklin, Mo. 1; New Ulm, Tex. 8; Nocona, Tex. 16; North Jefferson, Tex. 1; North McAlester, Okla. 6-14; North Roby, Tex. 25; Noxie, Okla. 10; Okesa, Okla. 10; Oklahoma City, Okla. 10-12; Oktaha, Okla. 6; Olson, Kan. 11; Oneta, Okla. 12; Oswego, Okla. 10-12; Osage, Kan. 6-9; Paola, Kan. 4-9-13; Parker, Kan. 9; Parkersville, Kan. 11; Parsons, Kan. 11; Patterson, Okla. 14; Peniel, Tex. 7; Persimmon, Okla. 10; Petrolia, Kan. 11; Pfugerville, Tex. 8; Pilot Grove, Mo. 1; Pilot Point, Tex. 26; Pioneer, Tex. 26; Pluga, Kan. 11; Plsek, Tex. 8; Plasterco Jct., Tex. 25; Pleasant Green, Mo. 1; Plum, Tex. 8; Point, Tex. 23; Porter, Okla. 12; Portland, Mo. 1; Post Oak, Mo. 4; Pottsboro, Tex. 7; Priddy, Okla. 4; Pryor, Okla. 6-9; Pueblo, Tex. 25; Quaker, Kan. 13; Red Bird, Okla. 12; Red Oak, Tex. 17; Reedville, Tex. 17; Rentiesville, Okla. 6; Rhineand, Mo. 1; Ribey, Kan. 11; Ringsdorf, Tex. 16; Rising Star, Tex. 26; Roanoke, Tex. 7; Rocheport, Mo. 1; Rockville, Mo. 1; Rockwood, Tex. 7-9; Rosanky, Tex. 17; Ross, Tex. 25; Rosston, Okla. 19; Rotan, Tex. 25; Rowlett, Tex. 7; Royse City, Tex. 7; Royston, Tex. 25; Rucker, Tex. 25; Russell, Mo. 2; St. Charles, Mo. 1; St. Jo, Tex. 16; St. Louis, Mo. 1; St. Paul, Kan. 11; St. Paul, Mo. 1; St. Paul, Tex. 7; San Antonio, Tex. 7; Sand Spgs., Okla. 12; San Felipe, Tex. 8; San Marcos, Tex. 8; Savanna, Okla. 6; Savonburg, Kan. 9; Sayers, Tex. 8; Schell City, Mo. 1; Scott, Okla. 19; Sealy, Tex. 8; Sedalia, Mo. 1-6; Sedalia, Tex. 25; Selma, Kan. 9; Shaner, Kan. 6-13; Sharon, Okla. 19; Sherman, Tex. 22; Sherman City, Kan. 13; Sipe Springs, Tex. 26; Skidley, Kan. 11; Smithville, Tex. 7-9-16-20; Somerset, Kan. 4; South Coffeyville, Okla. 10; South Mound, Kan. 1; Spink, Tex. 8; Stamford, Tex. 25; Stark, Kan. 9; Star Valley, Kan. 13; Steedman, Mo. 1; Steiner, Tex. 25; Sterrett, Tex. 7; Storage, Tex. 23; Strawn, Kan. 11; Strington, Okla. 6; Sun, Tex. 22; Supply, Okla. 19; Sutherland, Mo. 4; Sylvan Park, Kan. 11; Taylor, Tex. 7; Tebbets, Mo. 1; Temple, Tex. 8; Tipton, Okla. 19; Togo, Tex. 17; Trail, Okla. 19; Treloar, Mo. 1; Trenton, Tex. 7; Trinity Mills, 16-A; Troy, Tex. 8; Truett, Okla. 6; Tullahoma, Okla. 12; Tulsa, Okla. 8, T. U. V. 7-10-16-9; Turner, Mo. 3; Turpin, Okla. 19-A; Tushka, Okla. 6; Tuxedo, Tex. 25; Upton, Tex. 8; Urbana, Kan. 11; Vici, Okla. 19; Victory, Okla. 20; Vinita, Okla. 1-5-6-9; Waco, Tex. 4, B. C. D. E. F. G. H. I. M. N. O. S. T. U. V. 1-1-A-6-7-10-11-16; Waggoner, Okla. 6-9; Walker, Mo. 1-5; Walnut, Kan. 1; Walnut Springs, Tex. 25; Walton, Tex. 16; Wann, Okla. 10; Washington Ave., St. Louis, Mo. 1; Waxahachie, Tex. 8; Wayman, Kan. 11; Wayside, Okla. 10; Webster, Tex. 18; Weir, Tex. 8; Weikwa, Okla. 12; Welch, Okla. 6; Wellington, Tex. 20; West, Tex. 7; West Alton, Mo. 1; West Line, Mo. 4; West Mineral, Mo. 13; West Point, Tex. 8; White City, Kan. 11; Whitesboro, Tex. 7-9-16; Whitewright, Tex. 7; Whitney, Tex. 25; Wichita Falls, Tex. 25; Wildcat, Tex. 25; Wilburton, Okla. 14; Willow, Okla. 19; Windsor, Mo. 1; Witchee, Okla. 10; Woodbine, Tex. 16; Woodward, Okla. 19; Wreford, Kan. 11; Wyback, Okla. 12; Wyckoff, Kan. 11; Wynona, Okla. 10; Yale, Okla. 10-12.

Table F: List of stations and table numbers. Includes: Joplin, Mo. 13; Jordan, Tex. 17; Junction City, Kan. 11; Kansas City, Mo. 1; Katy, Tex. 8; Keller, Tex. 7; Kessler, Tex. 20; Keyes, Okla. 19-A; Kimball, Kan. 9; Kincaid, Kan. 9; Kingston, Tex. 7; Kiowa, Okla. 6; Kirtley, Tex. 8; Killeck, Tex. 8; Kline, Okla. 19; Knowles, Okla. 19; Krebs, Okla. 14; Labette, Kan. 6; Ladue, Mo. 1; La Grange, Tex. 6; La Harpe, Kan. 15; Lake Dallas, Tex. 16-A; Lakenon, Tex. 7; La Marque, Tex. 8-18; Lancaster, Tex. 7; Laremore, Tex. 17; Laverne, Okla. 19; League City, Tex. 8-18; Leedey, Okla. 19; Leeton, Mo. 4; Leonard, Tex. 7; Lewis, Mo. 1; Lewisville, Tex. 16-A; Linmerick, Mo. 3; Lindale, Mo. 1; Lindsay, Tex. 16; Little River, Tex. 8; Lockhart, Tex. 17; Lone Oak, Tex. 23; Lorena, Tex. 8; Louisville, Kan. 4; Loveland, Okla. 19; Lueders, Tex. 25; Luther, Okla. 10; McAlester, Okla. 4; McAlister, Okla. 4; McBalme, Mo. 1-3; McKittick, Mo. 1; McQueen, Okla. 20; Machens, Mo. 1; Magnolia, Mo. 4; Mangum, Okla. 19; Mangum, Tex. 25; Martha, Okla. 19; Marthasville, Mo. 1; Matson, Mo. 1; Maxwell, Tex. 17; May, Okla. 19; McAfee, Okla. 6; Mildred, Kan. 9; Milford, Tex. 7; Mineola, Tex. 23; Moberly, Mo. 2; Moccasin, Okla. 19; Mokane, Mo. 1; Montana, Kan. 13; Montrose, Mo. 1; Moody, Kan. 11; Moorewood, Okla. 19; Moran, Kan. 19; Moran, Tex. 25; Moravia, Okla. 19; Morgan, Tex. 25; Mound Valley, Kan. 10; Mouser, Okla. 19-A; Muenster, Tex. 10; Muneys, Okla. 19-A; Muskogee, Okla. 19; Myra, Tex. 16; Nela, Tex. 25; Neosho, Okla. 10; Nevada, Mo. 1-5; New Braunfels, Tex. 8-9; New Franklin, Mo. 1; New Ulm, Tex. 8; Nocona, Tex. 16; North Jefferson, Tex. 1; North McAlester, Okla. 6-14; North Roby, Tex. 25; Noxie, Okla. 10; Okesa, Okla. 10; Oklahoma City, Okla. 10-12; Oktaha, Okla. 6; Olson, Kan. 11; Oneta, Okla. 12; Oswego, Okla. 10-12; Osage, Kan. 6-9; Paola, Kan. 4-9-13; Parker, Kan. 9; Parkersville, Kan. 11; Parsons, Kan. 11; Patterson, Okla. 14; Peniel, Tex. 7; Persimmon, Okla. 10; Petrolia, Kan. 11; Pfugerville, Tex. 8; Pilot Grove, Mo. 1; Pilot Point, Tex. 26; Pioneer, Tex. 26; Pluga, Kan. 11; Plsek, Tex. 8; Plasterco Jct., Tex. 25; Pleasant Green, Mo. 1; Plum, Tex. 8; Point, Tex. 23; Porter, Okla. 12; Portland, Mo. 1; Post Oak, Mo. 4; Pottsboro, Tex. 7; Priddy, Okla. 4; Pryor, Okla. 6-9; Pueblo, Tex. 25; Quaker, Kan. 13; Red Bird, Okla. 12; Red Oak, Tex. 17; Reedville, Tex. 17; Rentiesville, Okla. 6; Rhineand, Mo. 1; Ribey, Kan. 11; Ringsdorf, Tex. 16; Rising Star, Tex. 26; Roanoke, Tex. 7; Rocheport, Mo. 1; Rockville, Mo. 1; Rockwood, Tex. 7-9; Rosanky, Tex. 17; Ross, Tex. 25; Rosston, Okla. 19; Rotan, Tex. 25; Rowlett, Tex. 7; Royse City, Tex. 7; Royston, Tex. 25; Rucker, Tex. 25; Russell, Mo. 2; St. Charles, Mo. 1; St. Jo, Tex. 16; St. Louis, Mo. 1; St. Paul, Kan. 11; St. Paul, Mo. 1; St. Paul, Tex. 7; San Antonio, Tex. 7; Sand Spgs., Okla. 12; San Felipe, Tex. 8; San Marcos, Tex. 8; Savanna, Okla. 6; Savonburg, Kan. 9; Sayers, Tex. 8; Schell City, Mo. 1; Scott, Okla. 19; Sealy, Tex. 8; Sedalia, Mo. 1-6; Sedalia, Tex. 25; Selma, Kan. 9; Shaner, Kan. 6-13; Sharon, Okla. 19; Sherman, Tex. 22; Sherman City, Kan. 13; Sipe Springs, Tex. 26; Skidley, Kan. 11; Smithville, Tex. 7-9-16-20; Somerset, Kan. 4; South Coffeyville, Okla. 10; South Mound, Kan. 1; Spink, Tex. 8; Stamford, Tex. 25; Stark, Kan. 9; Star Valley, Kan. 13; Steedman, Mo. 1; Steiner, Tex. 25; Sterrett, Tex. 7; Storage, Tex. 23; Strawn, Kan. 11; Strington, Okla. 6; Sun, Tex. 22; Supply, Okla. 19; Sutherland, Mo. 4; Sylvan Park, Kan. 11; Taylor, Tex. 7; Tebbets, Mo. 1; Temple, Tex. 8; Tipton, Okla. 19; Togo, Tex. 17; Trail, Okla. 19; Treloar, Mo. 1; Trenton, Tex. 7; Trinity Mills, 16-A; Troy, Tex. 8; Truett, Okla. 6; Tullahoma, Okla. 12; Tulsa, Okla. 8, T. U. V. 7-10-16-9; Turner, Mo. 3; Turpin, Okla. 19-A; Tushka, Okla. 6; Tuxedo, Tex. 25; Upton, Tex. 8; Urbana, Kan. 11; Vici, Okla. 19; Victory, Okla. 20; Vinita, Okla. 1-5-6-9; Waco, Tex. 4, B. C. D. E. F. G. H. I. M. N. O. S. T. U. V. 1-1-A-6-7-10-11-16; Waggoner, Okla. 6-9; Walker, Mo. 1-5; Walnut, Kan. 1; Walnut Springs, Tex. 25; Walton, Tex. 16; Wann, Okla. 10; Washington Ave., St. Louis, Mo. 1; Waxahachie, Tex. 8; Wayman, Kan. 11; Wayside, Okla. 10; Webster, Tex. 18; Weir, Tex. 8; Weikwa, Okla. 12; Welch, Okla. 6; Wellington, Tex. 20; West, Tex. 7; West Alton, Mo. 1; West Line, Mo. 4; West Mineral, Mo. 13; West Point, Tex. 8; White City, Kan. 11; Whitesboro, Tex. 7-9-16; Whitewright, Tex. 7; Whitney, Tex. 25; Wichita Falls, Tex. 25; Wildcat, Tex. 25; Wilburton, Okla. 14; Willow, Okla. 19; Windsor, Mo. 1; Witchee, Okla. 10; Woodbine, Tex. 16; Woodward, Okla. 19; Wreford, Kan. 11; Wyback, Okla. 12; Wyckoff, Kan. 11; Wynona, Okla. 10; Yale, Okla. 10-12.

Table G: List of stations and table numbers. Includes: Joplin, Mo. 13; Jordan, Tex. 17; Junction City, Kan. 11; Kansas City, Mo. 1; Katy, Tex. 8; Keller, Tex. 7; Kessler, Tex. 20; Keyes, Okla. 19-A; Kimball, Kan. 9; Kincaid, Kan. 9; Kingston, Tex. 7; Kiowa, Okla. 6; Kirtley, Tex. 8; Killeck, Tex. 8; Kline, Okla. 19; Knowles, Okla. 19; Krebs, Okla. 14; Labette, Kan. 6; Ladue, Mo. 1; La Grange, Tex. 6; La Harpe, Kan. 15; Lake Dallas, Tex. 16-A; Lakenon, Tex. 7; La Marque, Tex. 8-18; Lancaster, Tex. 7; Laremore, Tex. 17; Laverne, Okla. 19; League City, Tex. 8-18; Leedey, Okla. 19; Leeton, Mo. 4; Leonard, Tex. 7; Lewis, Mo. 1; Lewisville, Tex. 16-A; Linmerick, Mo. 3; Lindale, Mo. 1; Lindsay, Tex. 16; Little River, Tex. 8; Lockhart, Tex. 17; Lone Oak, Tex. 23; Lorena, Tex. 8; Louisville, Kan. 4; Loveland, Okla. 19; Lueders, Tex. 25; Luther, Okla. 10; McAlester, Okla. 4; McAlister, Okla. 4; McBalme, Mo. 1-3; McKittick, Mo. 1; McQueen, Okla. 20; Machens, Mo. 1; Magnolia, Mo. 4; Mangum, Okla. 19; Mangum, Tex. 25; Martha, Okla. 19; Marthasville, Mo. 1; Matson, Mo. 1; Maxwell, Tex. 17; May, Okla. 19; McAfee, Okla. 6; Mildred, Kan. 9; Milford, Tex. 7; Mineola, Tex. 23; Moberly, Mo. 2; Moccasin, Okla. 19; Mokane, Mo. 1; Montana, Kan. 13; Montrose, Mo. 1; Moody, Kan. 11; Moorewood, Okla. 19; Moran, Kan. 19; Moran, Tex. 25; Moravia, Okla. 19; Morgan, Tex. 25; Mound Valley, Kan. 10; Mouser, Okla. 19-A; Muenster, Tex. 10; Muneys, Okla. 19-A; Muskogee, Okla. 19; Myra, Tex. 16; Nela, Tex. 25; Neosho, Okla. 10; Nevada, Mo. 1-5; New Braunfels, Tex. 8-9; New Franklin, Mo. 1; New Ulm, Tex. 8; Nocona, Tex. 16; North Jefferson, Tex. 1; North McAlester, Okla. 6-14; North Roby, Tex. 25; Noxie, Okla. 10; Okesa, Okla. 10; Oklahoma City, Okla. 10-12; Oktaha, Okla. 6; Olson, Kan. 11; Oneta, Okla. 12; Oswego, Okla. 10-12; Osage, Kan. 6-9; Paola, Kan. 4-9-13; Parker, Kan. 9; Parkersville, Kan. 11; Parsons, Kan. 11; Patterson, Okla. 14; Peniel, Tex. 7; Persimmon, Okla. 10; Petrolia, Kan. 11; Pfugerville, Tex. 8; Pilot Grove, Mo. 1; Pilot Point, Tex. 26; Pioneer, Tex. 26; Pluga, Kan. 11; Plsek, Tex. 8; Plasterco Jct., Tex. 25; Pleasant Green, Mo. 1; Plum, Tex. 8; Point, Tex. 23; Porter, Okla. 12; Portland, Mo. 1; Post Oak, Mo. 4; Pottsboro, Tex. 7; Priddy, Okla. 4; Pryor, Okla. 6-9; Pueblo, Tex. 25; Quaker, Kan. 13; Red Bird, Okla. 12; Red Oak, Tex. 17; Reedville, Tex. 17; Rentiesville, Okla. 6; Rhineand, Mo. 1; Ribey, Kan. 11; Ringsdorf, Tex. 16; Rising Star, Tex. 26; Roanoke, Tex. 7; Rocheport, Mo. 1; Rockville, Mo. 1; Rockwood, Tex. 7-9; Rosanky, Tex. 17; Ross, Tex. 25; Rosston, Okla. 19; Rotan, Tex. 25; Rowlett, Tex. 7; Royse City, Tex. 7; Royston, Tex. 25; Rucker, Tex. 25; Russell, Mo. 2; St. Charles, Mo. 1; St. Jo, Tex. 16; St. Louis, Mo. 1; St. Paul, Kan. 11; St. Paul, Mo. 1; St. Paul, Tex. 7; San Antonio, Tex. 7; Sand Spgs., Okla. 12; San Felipe, Tex. 8; San Marcos, Tex. 8; Savanna, Okla. 6; Savonburg, Kan. 9; Sayers, Tex. 8; Schell City, Mo. 1; Scott, Okla. 19; Sealy, Tex. 8; Sedalia, Mo. 1-6; Sedalia, Tex. 25; Selma, Kan. 9; Shaner, Kan. 6-13; Sharon, Okla. 19; Sherman, Tex. 22; Sherman City, Kan. 13; Sipe Springs, Tex. 26; Skidley, Kan. 11; Smithville, Tex. 7-9-16-20; Somerset, Kan. 4; South Coffeyville, Okla. 10; South Mound, Kan. 1; Spink, Tex. 8; Stamford, Tex. 25; Stark, Kan. 9; Star Valley, Kan. 13; Steedman, Mo. 1; Steiner, Tex. 25; Sterrett, Tex. 7; Storage, Tex. 23; Strawn, Kan. 11; Strington, Okla. 6; Sun, Tex. 22; Supply, Okla. 19; Sutherland, Mo. 4; Sylvan Park, Kan. 11; Taylor, Tex. 7; Tebbets, Mo. 1; Temple, Tex. 8; Tipton, Okla. 19; Togo, Tex. 17; Trail, Okla. 19; Treloar, Mo. 1; Trenton, Tex. 7; Trinity Mills, 16-A; Troy, Tex. 8; Truett, Okla. 6; Tullahoma, Okla. 12; Tulsa, Okla. 8, T. U. V. 7-10-16-9; Turner, Mo. 3; Turpin, Okla. 19-A; Tushka, Okla. 6; Tuxedo, Tex. 25; Upton, Tex. 8; Urbana, Kan. 11; Vici, Okla. 19; Victory, Okla. 20; Vinita, Okla. 1-5-6-9; Waco, Tex. 4, B. C. D. E. F. G. H. I. M. N. O. S. T. U. V. 1-1-A-6-7-10-11-16; Waggoner, Okla. 6-9; Walker, Mo. 1-5; Walnut, Kan. 1; Walnut Springs, Tex. 25; Walton, Tex. 16; Wann, Okla. 10; Washington Ave., St. Louis, Mo. 1; Waxahachie, Tex. 8; Wayman, Kan. 11; Wayside, Okla. 10; Webster, Tex. 18; Weir, Tex. 8; Weikwa, Okla. 12; Welch, Okla. 6; Wellington, Tex. 20; West, Tex. 7; West Alton, Mo. 1; West Line, Mo. 4; West Mineral, Mo. 13; West Point, Tex. 8; White City, Kan. 11; Whitesboro, Tex. 7-9-16; Whitewright, Tex. 7; Whitney, Tex. 25; Wichita Falls, Tex. 25; Wildcat, Tex. 25; Wilburton, Okla. 14; Willow, Okla. 19; Windsor, Mo. 1; Witchee, Okla. 10; Woodbine, Tex. 16; Woodward, Okla. 19; Wreford, Kan. 11; Wyback, Okla. 12; Wyckoff, Kan. 11; Wynona, Okla. 10; Yale, Okla. 10-12.

Table H: List of stations and table numbers. Includes: Joplin, Mo. 13; Jordan, Tex. 17; Junction City, Kan. 11; Kansas City, Mo. 1; Katy, Tex. 8; Keller, Tex. 7; Kessler, Tex. 20; Keyes, Okla. 19-A; Kimball, Kan. 9; Kincaid, Kan. 9; Kingston, Tex. 7; Kiowa, Okla. 6; Kirtley, Tex. 8; Killeck, Tex. 8; Kline, Okla. 19; Knowles, Okla. 19; Krebs, Okla. 14; Labette, Kan. 6; Ladue, Mo. 1; La Grange, Tex. 6; La Harpe, Kan. 15; Lake Dallas, Tex. 16-A; Lakenon, Tex. 7; La Marque, Tex. 8-18; Lancaster, Tex. 7; Laremore, Tex. 17; Laverne, Okla. 19; League City, Tex. 8-18; Leedey, Okla. 19; Leeton, Mo. 4; Leonard, Tex. 7; Lewis, Mo. 1; Lewisville, Tex. 16-A; Linmerick, Mo. 3; Lindale, Mo. 1; Lindsay, Tex. 16; Little River, Tex. 8; Lockhart, Tex. 17; Lone Oak, Tex. 23; Lorena, Tex. 8; Louisville, Kan. 4; Loveland, Okla. 19; Lueders, Tex. 25; Luther, Okla. 10; McAlester, Okla. 4; McAlister, Okla. 4; McBalme, Mo. 1-3; McKittick, Mo. 1; McQueen, Okla. 20; Machens, Mo. 1; Magnolia, Mo. 4; Mangum, Okla. 19; Mangum, Tex. 25; Martha, Okla. 19; Marthasville, Mo. 1; Matson, Mo. 1; Maxwell, Tex. 17; May, Okla. 19; McAfee, Okla. 6; Mildred, Kan. 9; Milford, Tex. 7; Mineola, Tex. 23; Moberly, Mo. 2; Moccasin, Okla. 19; Mokane, Mo. 1; Montana, Kan. 13; Montrose, Mo. 1; Moody, Kan. 11; Moorewood, Okla. 19; Moran, Kan. 19; Moran, Tex. 25; Moravia, Okla. 19; Morgan, Tex. 25; Mound Valley, Kan. 10; Mouser, Okla. 19-A; Muenster, Tex. 10; Muneys, Okla. 19-A; Muskogee, Okla. 19; Myra, Tex. 16; Nela, Tex. 25; Neosho, Okla. 10; Nevada, Mo. 1-5; New Braunfels, Tex. 8-9; New Franklin, Mo. 1; New Ulm, Tex. 8; Nocona, Tex. 16; North Jefferson, Tex. 1; North McAlester, Okla. 6-14; North Roby, Tex. 25; Noxie, Okla. 10; Okesa, Okla. 10; Oklahoma City, Okla. 10-12; Oktaha, Okla. 6; Olson, Kan. 11; Oneta, Okla. 12; Oswego, Okla. 10-12; Osage, Kan. 6-9; Paola, Kan. 4-9-13; Parker, Kan. 9; Parkersville, Kan. 11; Parsons, Kan. 11; Patterson, Okla. 14; Peniel, Tex. 7; Persimmon, Okla. 10; Petrolia, Kan. 11; Pfugerville, Tex. 8; Pilot Grove, Mo. 1; Pilot Point, Tex. 26; Pioneer, Tex. 26; Pluga, Kan. 11; Plsek, Tex. 8; Plasterco Jct., Tex. 25; Pleasant Green, Mo. 1; Plum, Tex. 8; Point, Tex. 23; Porter, Okla. 12; Portland, Mo. 1; Post Oak, Mo. 4; Pottsboro, Tex. 7; Priddy, Okla. 4; Pryor, Okla. 6-9; Pueblo, Tex. 25; Quaker, Kan. 13; Red Bird, Okla. 12; Red Oak, Tex. 17; Reedville, Tex. 17; Rentiesville, Okla. 6; Rhineand, Mo. 1; Ribey, Kan. 11; Ringsdorf, Tex. 16; Rising Star, Tex. 26; Roanoke, Tex. 7; Rocheport, Mo. 1; Rockville, Mo. 1; Rockwood, Tex. 7-9; Rosanky, Tex. 17; Ross, Tex. 25; Rosston, Okla. 19; Rotan, Tex. 25; Rowlett, Tex. 7; Royse City, Tex. 7; Royston, Tex. 25; Rucker, Tex. 25; Russell, Mo. 2; St. Charles, Mo. 1; St. Jo, Tex. 16; St. Louis, Mo. 1; St. Paul, Kan. 11; St. Paul, Mo. 1; St. Paul, Tex. 7; San Antonio, Tex. 7; Sand Spgs., Okla. 12; San Felipe, Tex. 8; San Marcos, Tex. 8; Savanna, Okla. 6; Savonburg, Kan. 9; Sayers, Tex. 8; Schell City, Mo. 1; Scott, Okla. 19; Sealy, Tex. 8; Sedalia, Mo. 1-6; Sedalia, Tex. 25; Selma, Kan. 9; Shaner, Kan. 6-13; Sharon, Okla. 19; Sherman, Tex. 22; Sherman City, Kan. 13; Sipe Springs, Tex. 26; Skidley, Kan. 11; Smithville, Tex. 7-9-16-20; Somerset, Kan. 4; South Coffeyville, Okla. 10; South Mound, Kan. 1; Spink, Tex. 8; Stamford, Tex. 25; Stark, Kan. 9; Star Valley, Kan. 13; Steedman, Mo. 1; Steiner, Tex. 25; Sterrett, Tex. 7; Storage, Tex. 23; Strawn, Kan. 11; Strington, Okla. 6; Sun, Tex. 22; Supply, Okla. 19; Sutherland, Mo. 4; Sylvan Park, Kan. 11; Taylor, Tex. 7; Tebbets, Mo. 1; Temple, Tex. 8; Tipton, Okla. 19; Togo, Tex. 17; Trail, Okla. 19; Treloar, Mo. 1; Trenton, Tex. 7; Trinity Mills, 16-A; Troy, Tex. 8; Truett, Okla. 6; Tullahoma, Okla. 12; Tulsa, Okla. 8, T. U. V. 7-10-16-9; Turner, Mo. 3; Turpin, Okla. 19-A; Tushka, Okla. 6; Tuxedo, Tex. 25; Upton, Tex. 8; Urbana, Kan. 11; Vici, Okla. 19; Victory, Okla. 20; Vinita, Okla. 1-5-6-9; Waco, Tex. 4, B. C. D. E. F. G. H. I. M. N. O. S. T. U. V. 1-1-A-6-7-10-11-16; Waggoner, Okla. 6-9; Walker, Mo. 1-5; Walnut, Kan. 1; Walnut Springs, Tex. 25; Walton, Tex. 16; Wann, Okla. 10; Washington Ave., St. Louis, Mo. 1; Waxahachie, Tex. 8; Wayman, Kan. 11; Wayside, Okla. 10; Webster, Tex. 18; Weir, Tex. 8; Weikwa, Okla. 12; Welch, Okla. 6; Wellington, Tex. 20; West, Tex. 7; West Alton, Mo. 1; West Line, Mo. 4; West Mineral, Mo. 13; West Point, Tex. 8; White City, Kan. 11; Whitesboro, Tex. 7-9-16; Whitewright, Tex. 7; Whitney, Tex. 25; Wichita Falls, Tex. 25; Wildcat, Tex. 25; Wilburton, Okla. 14; Willow, Okla. 19; Windsor, Mo. 1; Witchee, Okla. 10; Woodbine, Tex. 16; Woodward, Okla. 19; Wreford, Kan. 11; Wyback, Okla. 12; Wyckoff, Kan. 11; Wynona, Okla. 10; Yale, Okla. 10-12.

for... Safety - Comfort - Economy - Convenience - Travel by Rail See page 21

Travel and Ship via KATY ~ Fast, dependable service to, from and through the Southwest

MISSOURI-KANSAS-TEXAS LINES

FREIGHT TRAFFIC—RATES

R. C. TROVILLON, Frt. Traffic Mgr. . . . St. Louis, Mo.
 D. J. COLLINS, General Freight Agent. . . . St. Louis, Mo.
 H. R. SMITH, Asst. General Freight Agent. . . . St. Louis, Mo.
 VERNON GASTON, Asst. Gen. Frt. Agent. . . . St. Louis, Mo.
 T. L. HIRSHMAN, Asst. Gen. Frt. Agent. . . . St. Louis, Mo.
 HENRY J. CABR, Asst. Gen. Frt. Agent. . . . St. Louis, Mo.

FREIGHT TRAFFIC—SOLICITATION

J. P. HENNESSY, JR., Traffic Mgr.—Sol. . . . St. Louis, Mo.
 C. P. BOWSER, Asst. Frt. Traffic Mgr. . . . St. Louis, Mo.
 C. E. VETCHE, Asst. Gen. Frt. Agent. . . . St. Louis, Mo.
 C. HALL, Eastern Traffic Manager, New York, N. Y.
 T. BATE, Asst. Traffic Manager, Los Angeles, Cal.
 C. L. LYONS, Asst. Frt. Traffic Mgr. . . . Kansas City, Mo.
 C. O. HELLER, Gen. Live Stock Agent, Fort Worth, Tex.

MISSOURI-KANSAS-TEXAS RAILROAD COMPANY

MATTHEW S. SLOAN,

Board Chairman and President, St. Louis, Mo.

GEO. T. ATKINS, Executive Vice-President. . . . St. Louis, Mo.
 J. F. GARVIN, Vice-President—Traffic. . . . St. Louis, Mo.
 F. W. GRACE, Vice-President and Gen. Manager. . . . Dallas, Tex.
 C. S. BURG, General Counsel. . . . St. Louis, Mo.
 J. O. LIVENGOOD, Comptroller. . . . St. Louis, Mo.
 T. H. SIMPSON, Treasurer. . . . St. Louis, Mo.
 N. A. PHILLIPS, Secretary. . . . St. Louis, Mo.
 F. RINGER, Chief Engineer. . . . St. Louis, Mo.
 CHARLES C. HUFF, General Solicitor. . . . Dallas, Tex.
 G. E. SCOTT, Purchasing Agent. . . . St. Louis, Mo.
 C. R. McDONALD, Executive Representative. . . . St. Louis, Mo.
 S. L. AUTSCHULER, Executive Gen. Agt. . . . Kansas City, Mo.
 J. H. LITTLE, Supt. Transportation. . . . Denison, Tex.

PASSENGER TRAFFIC

J. F. HENNESSY, JR., Traffic Mgr.—Sol. . . . St. Louis, Mo.
 W. M. FENWICK, Pgr. Traffic Mgr. . . . St. Louis, Mo.
 G. B. ECKER, Gen. Passenger Agent. . . . St. Louis, Mo.
 G. M. WAGNER, Asst. Gen. Pgr. Agt. . . . St. Louis, Mo.
 T. T. TURNER, Supt. Dining Service, Kansas City, Mo.
 G. D. VETCHE, Manager M., B. & E. Tr. . . . St. Louis, Mo.

INDUSTRIAL DEPARTMENT

GEO. C. SMITH, Asst. to Pres. (Ind. Dev.) . . . St. Louis, Mo.
 T. L. PEELE, Industrial Commissioner. . . . Dallas, Tex.
 R. G. BURFORD, Asst. Mgr., Ind. Dev. . . . Dallas, Tex.
 L. E. O'LEARY, Asst. Mgr., Ind. Dev. . . . St. Louis, Mo.
 J. D. KERR, Nat'l Resources Dev. Agt. . . . St. Louis, Mo.

MISSOURI-KANSAS-TEXAS RAILROAD COMPANY OF TEXAS

MATTHEW S. SLOAN,

President, Dallas, Tex.

GEO. T. ATKINS, Executive Vice-President. . . . Dallas, Tex.
 F. W. GRACE, Vice-President and General Manager. . . . Dallas, Tex.
 F. RINGER, Chief Engineer. . . . Dallas, Tex.
 CHARLES C. HUFF, General Solicitor. . . . Dallas, Tex.
 E. T. NELSON, Treasurer. . . . Dallas, Tex.
 O. H. BOWER, Auditor. . . . Dallas, Tex.
 J. H. LITTLE, Supt. Transportation. . . . Denison, Tex.

FREIGHT TRAFFIC

S. D. SPARKES, Freight Traffic Manager. . . . Dallas, Tex.
 HARVET ALLEN, Asst. Frt. Traffic Mgr. . . . Dallas, Tex.
 R. T. DEBOER, Asst. Frt. Traffic Agent. . . . Dallas, Tex.
 C. O. REEDER, Asst. Gen. Frt. Agent. . . . Dallas, Tex.
 H. W. LINDMAN, Asst. G. F. & P. Agt. Fort Worth, Tex.
 C. O. HELLER, Gen. Live Stock Agent, Fort Worth, Tex.

PASSENGER TRAFFIC

J. F. HENNESSY, JR., Traffic Mgr.—Sol. . . . Dallas, Tex.
 F. B. GRIFFIN, General Passenger Agent. . . . Dallas, Tex.
 M. G. ALDERSON, Asst. Gen'l Pgr. Agent. . . . Dallas, Tex.
 G. B. ECKER, Asst. Gen. Pgr. Agt. . . . Dallas, Tex.
 W. G. CRUSH, Spl. Pgr. Representative. . . . Dallas, Tex.
 T. T. TURNER, Supt. Dining Service. . . . Dallas, Tex.
 G. D. VETCHE, Manager M., B. & E. Traffic. . . . Dallas, Tex.

TRAFFIC REPRESENTATIVES

Austin, Tex. . . . Freight Station, 205 E. 4th St.
 Phone . . . 2-3141
 W. P. LACY, Division Freight & Passenger Agent.
 HUGO F. KENDALL, City Pgr. & Freight Agent.
 Birmingham, Ala. . . . 1512 Empire Bldg.
 Phone . . . 7-2983
 L. T. THOMAS, General Agent.
 ORVA THOMAS, Trav. Frt. and Pgr. Agent.
 GILBERT J. WHITE, Trav. Frt. and Pgr. Agent.
 Boston, Mass. . . . 140 Federal St.
 Phone . . . Hubbard 3840
 CHAS. H. MUNDT, General Agent.
 F. A. GREEN, Traveling Frt. & Pgr. Agent.
 Chicago, Ill. . . . 310 South Michigan Bldg.
 Phone . . . HARLISON 6800
 R. E. BOWDEN, General Agent, Passenger Dept.
 L. A. MOORE, Traveling Passenger Agent.
 E. F. MCWILLIAMS, City Passenger Agent.
 LYDIA BRUCKHART, City Passenger Agent.
 W. F. COX, General Agent, Freight Dept.
 O. H. GRIFFIN, Asst. General Agent, Frt. Dept.
 W. S. WEST, Traveling Frt. & Pgr. Agent.
 J. W. WILSON, Commercial Agent.
 Cincinnati, Ohio. . . . 500 Dixie Terminal Building.
 Phone . . . MAIN 4763
 T. L. DARNWELL, General Agent, Freight Dept.
 F. P. O'DONNELL, Trav. Freight & Pgr. Agent.
 E. H. HENKEL, Trav. Freight & Pgr. Agent.
 Cleveland, Ohio. . . . 1056 Terminal Tower Bldg.
 Phone . . . MAIN 3534
 C. R. TABLING, General Agent.
 Dallas, Tex. . . . Katy Building.
 Phone . . . 2-1401
 M. H. McCLURE, General Traveling Freight Agent.
 1018 Cotton Exchange Bldg. . . . 2-1401
 OSORIO ROBER, General Traveling Freight Agent.
 1303 Commerce Street, Phone 2-1401
 M. P. CURTIS, Div. Division Passenger Agent.
 T. C. CONNALLY, City Ticket Agent.
 C. E. EODORF, City Passenger Agent.
 C. H. CORYELL, City Passenger Agent.
 F. L. CRING, City Passenger Agent.
 NORMAN MANFIELD, Division Freight Agent.
 MARK FORD, Commercial Agent.
 J. L. ERWIN, Trav. Frt. and Pgr. Agent.
 Denison, Tex. . . . 1000
 Phone . . .
 J. E. SCOTT, Division Frt. and Pgr. Agent.
 J. E. JOHNSTON, Ticket Agent.
 Denver, Colo. . . . 214 Patterson Bldg.
 Phone . . . Keystone 6818
 E. I. DANSON, General Agent.
 O. G. ATKINSON, Traveling Frt. & Pgr. Agent.
 Detroit, Mich. . . . 2-267 General Motors Building.
 Phone . . . MADISON 2877
 O. W. WHITWORTH, General Agent, Passenger Dept.
 A. L. PEELE, General Agent, Freight Dept.
 A. O. BOYNE, Commercial Agent.
 C. R. GORDON, Traveling Frt. and Pgr. Agent.
 El Paso, Tex. . . . 1202 Bassett Tower.
 Phone . . . MAIN 625
 R. B. DAVIS, General Agent.
 Fort Worth, Tex. . . . 804 Houston St.
 Phone . . . 3-1471
 H. W. LINDMAN, Asst. Gen. Frt. & Pgr. Agent.
 A. W. HEAR, Division Passenger Agent.
 ELMER JORDAN, City Passenger Agent.
 C. W. LEFTWICH, City Ticket Agent.
 L. WARREN, Traveling Frt. and Pgr. Agent.
 L. L. JOHNSON, Traveling Frt. and Pgr. Agent.
 Galveston, Tex. . . . 312 Twenty-First St.
 Phone . . . 4373 and 4374
 W. L. MYERS, Div. Frt. and Pgr. Agent.

Greenville, Tex. . . . 408 Medical Arts Bldg.
 Phone . . . 693
 J. C. SHIELDS, Commercial Agent.
 L. J. BECKHAM, Ticket Agent. (Phone 30)
 Houston, Tex. . . . 919 Texas Ave., Rice Hotel Bldg.
 Phone . . . Preston 1281
 T. A. FURNELL, Division Passenger Agent.
 H. R. GASTON, City Pgr. and Ticket Agent.
 412 Cotton Exchange . . . Preston 1281
 E. O. MCCOBB, Division Freight Agent.
 C. F. HEALY, Traveling Frt. and Pgr. Agent.
 Kansas City, Mo. . . . 1027 Grand Ave.
 Phone . . . VICTOR 7040
 BRUCE R. MORTON, Division Passenger Agent.
 RAYMOND JOHNSON, City Ticket Agent.
 M. R. SMITH, Traveling Passenger Agent.
 G. M. HALL, City Passenger Agent.
 512 Railway Exchange Bldg. . . . VICTOR 7660
 C. L. LYONS, Asst. Freight Traffic Manager
 K. K. SPRELMAN, Division Freight Agent.
 M. S. NEWTON, Commercial Agent.
 C. E. DOWLING, Traveling Frt. and Pgr. Agent.
 F. H. DEARING, Traveling Frt. and Pgr. Agent.
 R. K. McDONALD, Traveling Frt. and Pgr. Agent.
 Los Angeles, Cal. . . . 401 Central Bldg., 108 West 4th St.
 Phone . . . TUCKER 9503
 J. T. BATE, Asst. Traffic Manager
 A. W. BONNYCASTLE, Gen'l Frt. and Pgr. Agent.
 HAROLD BRAGONER, Perishable Freight Agent.
 Memphis, Tenn. . . . 428 Exchange Bldg.
 Phone . . . 5-3124
 G. P. STRODE, General Agent.
 Mexico City, Mex., No. 20 Ave. Del Cinco de Mayo.
 Phone . . . Mexicanas L-8584
 R. NORTEGA, Mexican Traffic Representative.
 Milwaukee, Wis. . . . 1417 Majestic Bldg.
 211 W. Wisconsin Ave. . . . Phone Daily 2411
 W. E. LORDE, General Agent.
 Minneapolis, Minn. . . . 940 Metropolitan Life Bldg.
 Phone . . . Geneva 5103
 F. H. DOWLING, General Agent.
 I. B. HARN, Traveling Frt. and Pgr. Agent.
 Muskogee, Okla. . . . Katy Station.
 Phone . . . 425
 FRED MCGEE, Division Frt. and Pgr. Agent.
 PAT BIRDSONG, Ticket Agent.
 New Orleans, La. . . . 1814 Canal Bank Bldg.
 Phone . . . Raymond 9131
 H. A. CARROLL, General Agent.
 M. S. MCGHEE, Traveling Frt. and Pgr. Agent.
 New York City, N. Y. . . . 9 Rockefeller Plaza.
 Phone . . . Circle 6-6840
 C. F. SWYDER, General Eastern Passenger Agent.
 F. H. GIBBS, District Passenger Agent.
 C. J. WILLIAMS, City Passenger Agent.
 25 Broad St. . . . Phone Bowling Green 9-7430
 C. HALL, Eastern Traffic Manager.
 W. H. KRYMUM, General Agent, Freight Dept.
 R. B. REYNOLDS, Trav. Frt. and Pgr. Agent.
 Oklahoma City, Okla., 207 Commerce Exch. Bldg.
 Phone . . . 2-5148
 W. A. SPRINGALL, Division Frt. and Pgr. Agent.
 P. W. SPRY, Commercial Agent.
 W. K. FLYNN, Traveling Frt. and Pgr. Agent.
 4 So. Robinson St. . . . Phone 2-4457
 E. T. CONNOR, City Ticket Agent.

Parsons, Kan. . . . 2260
 Phone . . .
 C. A. REYNOLDS, Division Frt. and Pgr. Agent.
 ROY BLACKBURN, Trav. Frt. and Pgr. Agent.
 THEODORE COLEMAN, Trav. Frt. and Pgr. Agent.
 JOHN SCHOENBORN, Ticket Agent.
 Philadelphia, Pa. . . . 1014 Girard Trust Bldg.
 Phone . . . RITTENHOUSE 6478
 THOS. W. SCOTT, General Agent.
 HOWARD A. SPECK, Trav. Frt. and Pgr. Agent.
 Pittsburgh, Pa. . . . 1210 Clark Bldg.
 Phone . . . ATLANTIC 5181
 R. L. BRISWENGER, General Agent.
 ALBERT F. YOST, Trav. Frt. and Pgr. Agent.
 J. J. SCHMIDT, Trav. Frt. and Pgr. Agent.
 St. Louis, Mo. . . . Railway Exchange Building.
 Phone . . . MAIN 3660
 E. A. BUDMYER, Division Passenger Agent.
 J. W. COLLS, Traveling Passenger Agent.
 J. M. BOSSCH, City Passenger Agent.
 A. M. HUNTER, Division Freight Agent.
 J. F. DODGE, Traveling Frt. and Pgr. Agent.
 B. E. WAYNE, Commercial Agent.
 328 N. Broadway . . . MAIN 3660
 GEO. McDONALD, City Ticket Agent.
 Salt Lake City, Utah. . . . 206 Walker Bank Bldg.
 Phone . . . WYASARCH 4137
 F. T. AGNEW, General Agent.
 V. M. JACKSON, Trav. Frt. and Pgr. Agent.
 San Antonio, Tex. . . . 417-19 N. St. Mary's St.
 Phone . . . FAUNTL 6121
 ED. BRINDEL, Division Passenger Agent.
 J. R. HINSEY, Traveling Pgr. and Frt. Agent.
 J. D. DARNEN, City Ticket Agent.
 E. M. RANNEY, City Passenger Agent.
 J. F. DOLARD, Division Freight Agent.
 A. M. HALL, Traffic Representative.
 C. A. STILES, Traveling Frt. and Pgr. Agent.
 W. W. RENFRO, Commercial Agent.
 San Francisco, Cal. . . . 899 Mounsook Building.
 Phone . . . DOUGLAS 6333
 F. C. THOMPSON, General Agent.
 L. M. FOSTER, Soliciting Agent.
 Seattle, Wash. . . . 5549 Stuart Building.
 Phone . . . ELIHOOT 7853
 CLINTON WOODRING, General Agent.
 C. E. TURNER, Trav. Frt. and Pgr. Agent.
 Sherman, Tex. . . . 46
 Phone . . .
 J. W. BAILEY, Freight and Ticket Agent.
 Temple, Tex. . . . 2900
 Phone . . .
 J. G. PEARBY, Freight and Ticket Agent.
 Tulsa, Okla. . . . 320 Kennedy Building.
 Phone . . . 4-5115
 T. L. PEELE, JR., Division Frt. and Pgr. Agent.
 C. A. STEPHENSON, Commercial Agent.
 E. D. JONES, Traveling Frt. and Pgr. Agent.
 Waco, Tex. . . . Katy Station.
 Phone . . . 7120
 T. C. MARRAY, Division Frt. and Pgr. Agent.
 M. B. SCHAEFER, City Pgr. and Frt. Agent.
 J. O. CROSBY, Traveling Frt. and Pgr. Agent.
 Washington, D.C. 330 Southern Bldg., 1425 H St. N. W.
 Phone . . . NATIONAL 4582
 J. R. ORYFORD, General Agent.
 Wichita Falls, Tex. . . . Ninth and Ohio Streets.
 Phone . . . 4151 and 2
 H. O. SMITH, Division Frt. and Pgr. Agent.
 JOHN F. TAVIS, Trav. Frt. and Pgr. Agent.
 J. E. DRUMMOND, Trav. Frt. and Pgr. Agent.
 Winston-Salem, N. C. . . . 531 R. J. Reynolds Bldg.
 Phone . . . 8924
 L. O. BERGMAN, General Agent.

CONDENSED TIME TABLES

Southbound—Read down					TO AND FROM THE SOUTHWEST Equipment of trains—Page 5					Northbound—Read up				
The Sooner	Katy Limited	★The Bluebonnet	☆Texas Special	Katy Flyer		Katy Flyer	☆Texas Special	★The Bluebonnet	Katy Limited	The Sooner				
23	23-3	27 7	1	26 5		6 26	2	8 28	4-24	28				
①1010 ① 1 20	②1010 ① 1 20	5 30 7 45 9 00	1 65 6 30	①1165 5 25 6 35 9 20 10 01 11 25		7 30 1 02 11 57 9 05 8 23 7 10	8 30 △	11 45 △	1 60 11 12 10 00	7 15 5 05 4 05				
2 35 3 30 5 50 ⑦ 30	1 40 2 55 4 30 4 45 6 30 7 30 8 26 9 05	9 15 10 30 12 10 12 45 2 15 3 50 4 25	3 20 3 25	12 47 1 40 4 17 6 10		△ 10 10 8 00 7 00	10 26 10 15 8 50	12 50 12 30 11 05	45 9 8 6 35 6 15 4 20 3 25 2 40	2 50 1 55 11 35 ①1000				
	9 30 Via Fort Worth 10 15 1 30 11 15 12 15	4 50 Via Fort Worth 5 30 6 20 ⑦ 10	7 02 Via Fort Worth ⑧ 30 Via Dallas 8 35 9 30 9 40 10 57	7 22 Via Fort Worth ⑧ 04 9 02 10 00 ①1100 12 27	7 30 8 48 9 57 10 05 ①1100 11 42	11 10 9 47 8 20 8 10 7 40 6 51	11 08 △ Via Fort Worth 4 15 4 00 3 50	6 25 8 40 8 35 7 45 6 00	12 25 11 19 ①1100 9 08	1 35 △ Via Fort Worth 11 58 ①1100 9 45 8 15				
	3 25 3 35 4 35 6 45 6 45 7 40 8 02 9 00	11 40 ① 2 40	11 50 11 55 12 43	1 17 1 40 2 35 3 37 ④ 30 5 34 5 58 ⑦ 00	1 25 1 40 2 35 3 37 ④ 30 5 34 5 58 ⑦ 00	5 10 4 30 3 30 2 20 ① 20 12 14 ① 00	1 35 1 30 12 43 ② 10 55 ① ① 9 00	7 15 7 00 6 10 5 58 4 48 3 20 12 15 ①10 00	7 20					
			12 05 1 00 1 55 3 10 6 15 ⑧ 30	10 40 6 55 9 10		4 45 4 00 2 58 1 45 ①11 00 8 00	6 30 10 20 8 00							
★The Bluebonnet is the State Flower of Texas.					☆Star Train Through the Lone Star State.									

③ Pullman cars ready for occupancy at 9:30 P.M.
 ④ Pullman cars may be occupied until 8:00 A.M.
 ⑤ Pullmans open for advance occupancy—see table below.
 ⑥ Air-ports.

⑦ Permissive stop—see specific tables.
 ⑧ Through Pullman St. Louis and Brownsville.
 ⑨ Service by transfer at Waco.
 ⑩ Transfer necessary to St.LSW-CRI&P-GC&SF-Sou.Pac.

⑪ Via Bus between Houston and Galveston.
 ⑫ No connecting service between Fort Worth and Waco.
 ⑬ Pullman service by car-to-car transfer enroute—cars on train 1 to Muskogee thence train 3-23 and 33.

Sleeping Cars Available For Convenient Occupancy

Following are times at which Pullman cars originating at points indicated are available for occupancy before departures; also, where cars may be occupied after arrival of trains at destination.

Train No.	Sleepers open for Occupancy outbound at	PLACE	Train No.	Sleepers may be Occupied after arrival until	Train No.	Sleepers open for Occupancy outbound at	PLACE	Train No.	Sleepers may be Occupied after arrival until
5	9 30 p.m.	DALLAS			6	9 30 p.m.	Austin	5	8 00 a.m.
5	10 15 p.m.	Austin, San Antonio Cars			26	9 30 p.m.	Houston		
4	9 30 p.m.	Houston-Galveston Car	7	8 00 a.m.	23	9 30 p.m.	Kansas City		
4	10 15 p.m.	Tulsa Cars	7	8 00 a.m.	28	9 30 p.m.	Oklahoma City	23	8 00 a.m.
		Kansas City Cars	7	8 00 a.m.	5	9 30 p.m.	St. Louis		
		Cor F-34 from St. Louis			6	9 30 p.m.	San Antonio	5	8 00 a.m.
		FORT WORTH							
28	9 30 p.m.	Austin, San Antonio Cars							
28	10 15 p.m.	Houston Car	27	8 00 a.m.					
24	10 00 p.m.	Tulsa, Kansas City Cars	27	8 00 a.m.					
		Cor F-7 from St. Louis							

All Assigned Cars
Shown Below Are
Air-Conditioned.

SLEEPING, CHAIR AND DINING CARS

All Assigned Cars
Shown Below Are
Air-Conditioned.

No. 1-11. TEXAS SPECIAL

Lounge Car.....*Valet Service; Radio, Library, Writing Desk and Stationery, Newspapers and Periodicals; Baseball Scores; Telephones at St. Louis and San Antonio.*

Sleeping Cars.....St. Louis to Dallas, 10-1-2.
St. Louis to Denison-Dallas—handled on No. 3 from Muskogee, 12 Dr.
St. Louis to Waco via Fort Worth, 10-1-2.
St. Louis to San Antonio via Dallas, 14 Sec.
St. Louis to Brownsville via Dallas-San Antonio, 10-1-2.—handled on S. P. train 313 from San Antonio.
Kansas City to San Antonio via Dallas, 12 Dr.—handled on No. 27-7 to Dallas.
Wichita Falls (for service see note ⑥).

Dining Cars.....Service for all meals:
St. Louis to San Antonio via Dallas.
Denison to Fort Worth.

Chair Cars.....St. Louis to San Antonio via Dallas.
Denison to Houston via Fort Worth.

No. 2. TEXAS SPECIAL

Lounge Car.....*Valet Service; Radio, Library, Writing Desk and Stationery, Newspapers and Periodicals; Baseball Scores; Telephones at San Antonio and St. Louis.*

Sleeping Cars.....Brownsville to St. Louis via San Antonio-Dallas, 10-1-2.—handled on S. P. train 314 to San Antonio.
San Antonio to St. Louis via Dallas, 14 Sec.
San Antonio to Kansas City via Dallas, 12 Dr.—handled on No. 8 from Dallas.
Dallas to St. Louis, 10-1-2 & 12 Dr. (2 Cars).
Fort Worth to St. Louis, 10-1-2.

Dining Cars.....Service for all meals.

Chair Cars.....San Antonio to St. Louis via Dallas.
Fort Worth to Denison.

No. 3-23. KATY LIMITED

Observation.....Kansas City-Dallas-San Antonio.

Lounge Cars.....Muskogee to Fort Worth.
Denison to Dallas.

Sleeping Cars.....Kansas City to Oklahoma City, 12 Dr.
Kansas City to Fort Worth, 10-1-2.
Kansas City to San Antonio via Dallas, 10 Obs.
Muskogee to Dallas, 12 Dr.—handled on No. 1 from St. Louis.
Whitesboro to Wichita Falls, 10 Obs.—handled on No. 26 from Houston.

Dining Cars.....Service for all meals.

Chair Cars.....Kansas City to Oklahoma City.
Kansas City to San Antonio via Dallas.
Denison to Fort Worth.
Denison to Wichita Falls.

No. 4-24. KATY LIMITED

Observation.....San Antonio-Fort Worth-Kansas City.

Sleeping Cars.....San Antonio to Kansas City via Fort Worth, 10 Obs.
Waco to Kansas City via Dallas, 10-1-2.
Fort Worth to Tulsa, 12 Dr.
Dallas to Tulsa, 12 Dr. & 14 Sec. (2 Cars).
Tulsa cars handled on Frisco train 504 from Denison.

Dining Cars.....San Antonio to Waco.
Muskogee to Parsons.

Chair Cars.....San Antonio to Kansas City via Dallas.
Houston to Denison via Fort Worth.

No. 5-25. KATY FLYER

Observation.....Kansas City-Dallas-San Antonio.
Wichita Falls-Fort Worth-Houston.

Sleeping Cars.....St. Louis to Oklahoma City, 12 Dr.
Kansas City to San Antonio via Dallas, 10 Obs.
Tulsa to Galveston via Dallas, 12 Dr.—handled on Frisco train 505 to Denison.
Wichita Falls to Houston via Fort Worth, 10 Obs.—handled on No. 38 from Wichita Falls.
Dallas to San Antonio, 12 Dr. (2 Cars).
Dallas to Galveston, 12 Dr.
Dallas to Austin, 16 Sec.
Fort Worth to Austin, 12 Dr.
Fort Worth to San Antonio, 12 Dr.
Fort Worth to Houston, 10 Obs.

Dining Cars.....Parsons to Denison.
Breakfast Stop at Lindale, Mo.—at 8:11 a. m. Orders taken by porter.

Chair Cars.....St. Louis to Oklahoma City.
Kansas City to San Antonio via Dallas.
Denison to Galveston via Fort Worth.

No. 6-26. KATY FLYER

Observation.....Houston-Fort Worth-Wichita Falls.
San Antonio-Dallas-Kansas City.

Sleeping Cars.....Galveston to Tulsa via Dallas, 12 Dr.—handled on Frisco train 510 from Denison.
Houston to Fort Worth-Wichita Falls, 10 Obs.
San Antonio to Kansas City via Dallas, 10 Obs.
San Antonio to Fort Worth, 12 Dr.
San Antonio to Dallas, 12 Dr. (2 Cars).
Austin to Dallas, 16 Sec.
Austin to Fort Worth, 12 Dr.
Oklahoma City to St. Louis, 12 Dr.

Dining Cars.....Waco to Dallas.
Denison to Kansas City.

Chair Cars.....San Antonio to Kansas City via Dallas.
Galveston to Denison via Fort Worth.
Oklahoma City to St. Louis.

No. 7-27. THE BLUEBONNET

Lounge Car.....St. Louis to Monett.

Observation.....Kansas City to Fort Worth.

Sleeping Cars.....St. Louis to Dallas, 10-1-2.
St. Louis to Fort Worth, 12 Dr.
Kansas City to San Antonio via Dallas, 12 Dr.—handled on No. 1 from Dallas.
Kansas City to Fort Worth, 10 Obs.
Tulsa to Dallas, 14 Sec. & 12 Dr. (2 Cars).
Tulsa to Fort Worth, 12 Dr.—Tulsa cars handled on Frisco train 507 to Denison.

Dining Cars.....Service for all meals

Chair Cars.....St. Louis to Dallas.
Kansas City to Dallas.
Denison to Fort Worth.

No. 8-18-28. THE BLUEBONNET

Lounge Cars.....Dallas to Muskogee.
Monett to St. Louis.

Observation.....Fort Worth to Kansas City.

Sleeping Cars.....San Antonio to Kansas City via Dallas, 12 Dr.—handled on No. 2 from San Antonio.
Dallas to St. Louis, 10-1-2.
Dallas to Kansas City, 12 Dr.
Fort Worth to St. Louis, 12 Dr.
Fort Worth to Kansas City, 10 Obs.
Oklahoma City to Kansas City, 12 Dr.
Wichita Falls to Whitesboro, 10 Obs.—for handling to Houston on No. 25.

Dining Cars.....Service for all Meals.

Chair Cars.....Dallas to St. Louis.
Dallas to Kansas City.
Oklahoma City to Kansas City.
Fort Worth to Denison.
Wichita Falls to Denison.

No. 23. THE SOONER

Sleeping Car.....Kansas City to Oklahoma City, 12 Dr.
Chair Car.....Kansas City to Oklahoma City.

No. 28. THE SOONER

Sleeping Car.....Oklahoma City to Kansas City, 12 Dr.
Chair Car.....Oklahoma City to Kansas City.

All Assigned Cars Shown On This Page
Are Air-Conditioned

CAPACITY OF SLEEPERS

12 Dr. —12 Sections—1 Drawing Room.
14 Sec. —14 Sections—No Drawing Room.
10-1-2 —10 Sections—1 Drawing Room—2 Compartments.
16 Sec. —16 Sections—No Drawing Room.
Observation —10 Sections —Observation with or 10 Obs.— lounge room—No Drawing Room.

Convenient!

Choice of fine, fast trains
between Dallas-Fort Worth
and San Antonio.

For condensed schedules of through sleeping
cars, see Tables E, F, G, H, page 6.

ST. LOUIS—BROWNSVILLE

Via San Antonio and Southern Pacific Lines

Texas Special	Through Pullman Service	Texas Special
5.30	lv. St. Louis (M-K-T).....	8.30
5.30	lv. Kansas City (M-K-T).....	7.15
9.30	Ar. Dallas (M-K-T).....	4.00
4.30	Ar. San Antonio (M-K-T).....	9.00
10.40	lv. San Antonio (So. Pac.).....	6.30
9.10	Ar. Brownsville (So. Pac.).....	8.00

Double Daily Service

Through Pullmans between
Tulsa and Dallas, Fort Worth,
Houston, Galveston.

For condensed schedules of through sleeping
cars, see Tables S, T, U, V, page 7.

CONDENSED SCHEDULES — SLEEPING CAR LINES

ST. LOUIS—DALLAS—SAN ANTONIO

No. 5	No. 1	No. 7	TABLE A			No. 6	No. 2	No. 8
① 155	5 30	1 55	Lv. ST. LOUIS	Ar	7 30	8 30	11 45	
2 55	12 30	2 20	Lv. Muskogee	Ar	3 40	10 25	12 50	
4 45	—	2 15	Lv. McAlester	Lv	1 54	8 50	11 05	
4 45	—	—	Lv. Atoka	Ar	12 48	—	—	
6 28	—	3 50	Lv. Durant	Lv	12 02	7 14	9 28	
7 05	6 50	4 25	Lv. Denison	Lv	11 30	6 45	9 00	
8 48	8 09	5 54	Lv. Greenville	Lv	9 47	6 23	8 35	
9 9	9 18	7 05	Lv. Highland Park	Ar	8 20	4 15	6 28	
10 05	9 30	② 17	Lv. DALLAS	Lv	8 10	4 00	6 10	
① 100	9 35	—	Lv. Union Station	Lv	7 40	3 50	6 00	
11 42	—	—	Lv. Waxahachie	Lv	6 51	—	—	
1 26	11 50	—	Lv. Waco	Lv	5 10	1 35	—	
2 37	12 43	—	Lv. Temple	Lv	3 30	12 43	—	
3 37	—	—	Lv. Georgetown	Lv	2 20	—	—	
④ 30	2 28	—	Lv. Austin	Lv	① 20	10 55	—	
⑤ 34	—	—	Lv. San Marcos	Lv	12 14	—	—	
⑦ 00	4 30	—	Lv. SAN ANTONIO	Lv	① 100	9 00	—	

ST. LOUIS—FORT WORTH—SAN ANTONIO

No. 5-25	1-11-1	No. 7-27	TABLE B			No. 6-26	No. 12-2	No. 18-B
① 155	5 30	1 55	Lv. ST. LOUIS	Ar	7 30	8 30	11 45	
2 55	12 30	2 30	Lv. Muskogee	Ar	3 40	10 25	12 50	
4 45	—	2 15	Lv. McAlester	Lv	1 54	8 50	11 05	
4 45	—	—	Lv. Atoka	Ar	12 48	—	—	
6 28	—	3 50	Lv. Durant	Lv	12 02	7 14	9 28	
7 05	6 50	4 25	Lv. Denison	Lv	11 30	6 45	9 00	
8 48	8 09	5 50	Lv. Whitesboro	Lv	10 25	4 45	6 58	
9 9	9 18	6 20	Lv. Denton	Lv	9 25	4 47	6 45	
10 05	9 30	⑦ 10	Lv. FORT WORTH	Lv	8 30	3 50	6 00	
① 100	9 35	—	Lv. (Union Station)	Lv	7 35	—	—	
11 42	—	—	Lv. Hillsboro	Lv	6 10	—	—	
1 26	11 50	—	Lv. Waco	Lv	5 20	—	—	
2 37	12 43	—	Lv. Temple	Lv	3 30	—	—	
3 37	—	—	Lv. Georgetown	Lv	2 20	—	—	
④ 30	2 28	—	Lv. Austin	Lv	① 20	12 14	—	
⑤ 34	—	—	Lv. San Marcos	Lv	12 14	—	—	
⑦ 00	4 30	—	Lv. SAN ANTONIO	Lv	① 100	9 00	—	

ST. LOUIS—DALLAS—HOUSTON—GALVESTON

5-25	No. 1-11	No. 7	TABLE C			26-6	No. 2	No. 8
① 155	5 30	1 55	Lv. ST. LOUIS	Ar	7 30	8 30	11 45	
2 55	6 50	2 20	Lv. Denison	Lv	11 30	4 45	9 00	
4 45	9 30	⑦ 15	Lv. DALLAS	Lv	8 10	4 00	6 10	
① 100	9 35	—	Lv. Waxahachie	Lv	7 40	—	—	
11 42	—	—	Lv. Waco	Lv	6 51	—	—	
1 26	11 50	—	Lv. Temple	Lv	5 10	—	—	
2 37	1 00	—	Lv. Smithville	Lv	4 00	—	—	
3 37	3 10	—	Lv. Smithville	Lv	1 45	—	—	
④ 30	3 34	—	Lv. La Grange	Lv	1 09	—	—	
⑤ 34	3 45	—	Lv. Sealy	Lv	12 06	—	—	
⑦ 00	4 45	—	Lv. HOUSTON	Lv	① 100	12 15	—	
—	③ 30	—	Lv. GALVESTON	Lv	8 00	—	—	

ST. LOUIS—FT. WORTH—HOUSTON—GALVESTON

No. 5-25	No. 1-11	No. 7-27	TABLE D			No. 26-6	No. 12-2	No. 18-B
① 155	5 30	1 55	Lv. ST. LOUIS	Ar	7 30	8 30	11 45	
2 55	6 50	2 20	Lv. Denison	Lv	11 30	4 45	9 00	
4 45	9 30	⑦ 10	Lv. FORT WORTH	Lv	9 30	5 58	8 00	
① 100	9 35	—	Lv. Hillsboro	Lv	8 25	—	—	
11 42	—	—	Lv. Waco	Lv	6 10	—	—	
1 26	11 50	—	Lv. Temple	Lv	5 20	—	—	
2 37	1 00	—	Lv. Temple	Lv	4 00	—	—	
3 37	3 10	—	Lv. Smithville	Lv	1 45	—	—	
④ 30	3 34	—	Lv. La Grange	Lv	1 09	—	—	
⑤ 34	3 45	—	Lv. Sealy	Lv	12 06	—	—	
⑦ 00	4 45	—	Lv. HOUSTON	Lv	① 100	12 15	—	
—	③ 30	—	Lv. GALVESTON	Lv	8 00	—	—	

DALLAS AND SAN ANTONIO

No. 5	No. 3	No. 1	TABLE E			No. 2	No. 4	No. 6
① 100	12 40	9 35	Lv. DALLAS	Ar	3 50	10 00	7 40	
11 42	1 34	—	Lv. Waxahachie	Lv	—	9 08	6 51	
1 26	3 26	11 50	Lv. Waco	Lv	1 35	7 15	5 10	
2 37	4 35	12 43	Lv. Temple	Lv	12 43	6 10	3 30	
3 37	5 46	—	Lv. Georgetown	Lv	①	4 58	2 20	
④ 30	6 45	2 28	Lv. Austin	Lv	10 55	3 55	① 20	
⑦ 00	9 00	4 30	Lv. SAN ANTONIO	Lv	9 00	1 30	① 10 00	

FORT WORTH AND SAN ANTONIO

No. 25-5	No. 11-1	TABLE F			No. 6-26	No. 4-24
① 100	9 40	Lv. FORT WORTH	Ar	7 35	9 45	
12 27	10 57	Lv. Hillsboro	Ar	6 10	8 15	
1 17	11 45	Lv. Waco	Lv	5 20	7 20	
2 35	12 43	Lv. Temple	Lv	3 30	6 10	
3 37	—	Lv. Georgetown	Lv	2 20	4 58	
④ 30	2 28	Lv. Austin	Lv	① 20	3 45	
⑦ 00	4 30	Lv. SAN ANTONIO	Lv	① 100	1 30	

DALLAS—HOUSTON—GALVESTON

No. 5-25	No. 1-11	TABLE G			No. 26-6	No. 24-4
① 100	9 35	Lv. DALLAS	Ar	7 40	10 00	
11 42	—	Lv. Waxahachie	Lv	6 51	9 08	
1 50	12 05	Lv. Waco	Lv	4 45	6 50	
3 43	—	Lv. Taylor	Lv	2 58	4 48	
5 34	—	Lv. La Grange	Lv	1 09	2 44	
6 35	—	Lv. Sealy	Lv	12 06	1 33	
7 45	—	Lv. HOUSTON	Lv	① 100	12 15	
9 45	—	Lv. GALVESTON	Lv	8 00	① 10 00	

FORT WORTH—HOUSTON—GALVESTON

No. 25	No. 11	TABLE H			No. 26	No. 24
① 100	9 40	Lv. FORT WORTH	Ar	7 35	9 45	
12 27	10 57	Lv. Hillsboro	Ar	6 10	8 15	
1 50	12 05	Lv. Waco	Lv	4 45	6 50	
3 43	—	Lv. Taylor	Lv	2 58	4 48	
5 34	—	Lv. La Grange	Lv	1 09	2 44	
6 35	—	Lv. Sealy	Lv	12 06	1 33	
7 45	—	Lv. HOUSTON	Lv	① 100	12 15	
9 45	—	Lv. GALVESTON	Lv	8 00	① 10 00	

ST. LOUIS AND WICHITA FALLS

1-3-23-33	TABLE J			38-18-8
⑤ 30	Lv. ST. LOUIS	Ar	11 45	
3 20	Lv. Muskogee	Lv	12 50	
4 45	Lv. Denison	Lv	12 30	
9 05	Lv. Whitesboro	Lv	8 35	
10 15	Lv. Galveston	Lv	7 45	
10 55	Lv. Ringgold	Lv	6 32	
12 35	Lv. Henrietta	Lv	5 09	
1 00	Lv. WICHITA FALLS	Lv	4 40	

ST. LOUIS AND OKLAHOMA CITY

No. 5-25	TABLE K			No. 26-6
① 155	Lv. ST. LOUIS	Ar	7 30	
6 35	Lv. Sedalia	Lv	11 57	
11 25	Lv. Parsons	Lv	7 10	
11 55	Lv. Coffeyville	Lv	6 40	
12 47	Lv. Bartlesville	Lv	6 45	
1 40	Lv. Cleveland	Lv	3 55	
3 15	Lv. Cushing	Lv	2 17	
4 17	Lv. OKLAHOMA CITY	Lv	12 30	

① Pullman cars ready for occupancy at 9:30 P. M.
 ② Pullman cars may be occupied until 8:00 A. M.
 ③ Pullman cars ready for occupancy at 10:15 p.m.

④ Permissive stop—see specific tables.
 ⑤ Service by transfer at Waco.
 ⑥ Via Bus between Houston and Galveston.

⑦ Pullman service by car-to-car transfer enroute—cars on train 1 to Muskogee, thence on trains 2-23 and 33.

CONDENSED SCHEDULES — SLEEPING CAR LINES

KANSAS CITY—DALLAS—SAN ANTONIO

No. 23-3	No. 27-7-1	No. 25-5	TABLE L		No. 2-28	No. 4-24	No. 6-26
⑩10 10	5 30	8 30	Lv. KANSAS CITY	Ar	7 15	1 50	10 10
①	7 45	—	Ar. Moran	Lv	5 05	11 12	8 00
1 20	8 29	—	Ar. Erie	Lv	4 27	10 24	⑦
2 55	10 30	11 40	Ar. Parsons	Lv	4 05	10 00	7 00
4 30	12 10	1 22	Ar. Vinita	Lv	2 30	8 15	5 18
6 30	2 15	4 45	Ar. Muskogee	Lv	12 53	6 35	3 40
8 30	—	6 45	Ar. McAlester	Lv	11 05	4 20	12 54
10 30	—	8 45	Ar. Atoka	Lv	9 25	3 25	12 48
12 30	—	10 28	Ar. Durant	Lv	9 20	2 40	12 02
2 30	3 50	12 28	Ar. Denison	Lv	9 20	2 08	11 30
4 30	4 25	1 48	Ar. Greenville	Lv	7 22	12 25	9 47
6 30	5 54	3 57	Ar. Highland Park	Lv	6 10	11 10	8 20
8 30	7 05	5 57	Lv. DALLAS	Ar	6 10	⑩11 00	8 10
10 30	⑦7 15	⑩11 00	Lv. Waxahachie	Ar	3 50	10 00	7 40
12 30	9 35	⑩11 00	Lv. Waco	Ar	1 35	9 08	⑩6 51
2 30	11 42	—	Lv. Temple	Ar	⑩12 43	7 15	5 10
4 30	⑩12 43	—	Lv. Georgetown	Ar	10 55	6 10	3 30
6 30	⑩2 28	⑩4 30	Lv. Austin	Ar	10 55	3 58	⑩1 20
8 30	⑩4 30	⑩5 34	Lv. San Marcos	Ar	9 00	2 52	⑩12 14
10 30	⑩7 00	⑩8 00	Lv. SAN ANTONIO	Ar	9 00	1 30	⑩11 00

KANSAS CITY—FORT WORTH—SAN ANTONIO

No. 27-1	No. 23	No. 25-5	TABLE M		No. 18-28	No. 4-24	No. 6-26
5 30	⑩10 10	8 30	Lv. KANSAS CITY	Ar	7 15	1 50	10 10
7 45	—	—	Ar. Moran	Lv	5 05	11 12	8 00
8 29	①	—	Ar. Erie	Lv	4 27	10 24	⑦
10 30	1 20	11 40	Ar. Parsons	Lv	4 05	10 00	7 00
12 10	2 55	1 22	Ar. Vinita	Lv	2 30	8 15	5 18
2 15	4 30	2 55	Ar. Muskogee	Lv	12 53	6 35	3 40
—	6 30	4 45	Ar. McAlester	Lv	11 05	4 20	12 54
—	8 30	6 45	Ar. Atoka	Lv	9 25	3 25	12 48
—	10 30	8 26	Ar. Durant	Lv	9 20	2 40	12 02
—	12 10	9 05	Ar. Denison	Lv	9 20	2 08	11 30
—	2 15	10 15	Ar. Greenville	Lv	7 22	12 25	9 47
—	4 30	11 15	Ar. Highland Park	Lv	6 10	11 10	8 20
—	6 30	12 16	Lv. FORT WORTH	Ar	6 10	⑩11 00	8 10
—	8 30	—	Lv. Hillsboro	Ar	3 50	9 08	⑩6 51
—	10 30	—	Lv. Waco	Ar	1 35	7 15	5 10
—	12 30	—	Lv. Temple	Ar	⑩12 43	6 10	3 30
—	2 30	—	Lv. Georgetown	Ar	10 55	3 58	⑩1 20
—	4 30	—	Lv. Austin	Ar	9 00	2 52	⑩12 14
—	6 30	—	Lv. SAN ANTONIO	Ar	9 00	1 30	⑩11 00

KANSAS CITY—DALLAS—HOUSTON—GALVESTON

No. 23-3	No. 27-1-11	No. 25-5-26	TABLE N		No. 8-28	No. 24-4-24	No. 26-6-26
⑩10 10	5 30	8 30	Lv. KANSAS CITY	Ar	7 15	1 50	10 10
9 05	4 25	7 05	Ar. Denison	Lv	9 00	2 08	11 30
12 16	⑦7 15	⑩10 00	Lv. DALLAS	Ar	6 00	⑩11 00	8 10
—	9 35	⑩11 00	Lv. Waxahachie	Ar	—	9 08	⑩6 51
—	—	⑩11 42	Lv. Waco	Ar	—	7 15	5 10
—	11 50	—	Lv. Temple	Ar	—	6 55	4 00
—	①1 00	—	Lv. Smithville	Ar	—	3 20	1 45
—	①3 10	—	Lv. La Grange	Ar	—	2 44	1 09
—	①4 45	—	Lv. Sealy	Ar	—	1 33	⑩12 14
—	①6 15	—	Lv. HOUSTON	Ar	—	12 16	⑩11 00
—	①8 30	—	Lv. GALVESTON	Ar	—	⑩10 00	8 00

KANSAS CITY—FORT WORTH—HOUSTON—GALVESTON

No. 23	No. 27-11	No. 26	TABLE O		No. 18-28	No. 24	No. 26
⑩10 10	5 30	8 30	Lv. KANSAS CITY	Ar	7 15	1 50	10 10
9 05	4 25	7 05	Ar. Denison	Lv	9 00	2 08	11 30
12 16	⑦7 15	⑩10 00	Lv. FORT WORTH	Ar	⑩11 00	8 30	8 30
—	9 40	⑩11 00	Lv. Hillsboro	Ar	—	9 45	7 35
—	10 57	12 27	Lv. Waco	Ar	—	8 15	6 10
—	11 40	1 17	Lv. Temple	Ar	—	5 20	5 20
—	①1 00	2 45	Lv. Smithville	Ar	—	5 55	4 00
—	①3 10	4 58	Lv. La Grange	Ar	—	3 20	1 45
—	①4 45	5 34	Lv. Sealy	Ar	—	2 44	1 09
—	①6 15	⑩6 35	Lv. HOUSTON	Ar	—	1 33	⑩12 14
—	①8 30	⑩9 45	Lv. GALVESTON	Ar	—	12 15	⑩11 00

KANSAS CITY AND WICHITA FALLS

No. 23-33	TABLE P		No. 33-28
⑩10 10	Lv. KANSAS CITY	Ar	7 15
9 30	Lv. Denison	Ar	8 35
10 15	Lv. Whitesboro	Ar	7 45
10 55	Lv. Galveston	Ar	7 05
12 35	Lv. Ringgold	Ar	6 32
1 00	Lv. Hedley	Ar	5 05
1 30	Lv. WICHITA FALLS	Ar	4 40

KANSAS CITY AND OKLAHOMA CITY

No. 23	No. 25	TABLE R		No. 28	No. 26
⑩10 10	8 30	Lv. KANSAS CITY	Ar	7 15	10 10
1 20	11 40	Ar. Parsons	Lv	4 05	7 00
2 35	12 47	Ar. Coffeyville	Lv	2 50	5 45
3 50	1 45	Ar. Bartlesville	Lv	1 55	4 55
4 55	3 15	Ar. Cleveland	Lv	12 30	7 15
6 30	4 17	Ar. Cushing	Lv	11 35	7 30
⑦7 30	5 10	Lv. OKLAHOMA CITY	Ar	⑩10 00	12 30

TULSA—DALLAS—HOUSTON

Frisco No. 507 M-K-T No. 7-11	★Frisco No. 505 M-K-T No. 5-25	TABLE S		M-K-T No. 24-4 Frisco No. 504	M-K-T No. 6 Frisco No. 510
⑩10 15	2 15	Lv. TULSA	Ar	7 55	5 50
4 42	7 30	Lv. Denison	Ar	1 45	11 10
7 05	9 57	Ar. Highland Park	Lv	⑩11 10	8 20
⑦7 15	10 05	Lv. DALLAS	Ar	⑩11 00	8 10
11 50	1 25	Ar. Waco	Lv	7 15	5 10
⑩1 00	2 45	Ar. Temple	Lv	6 55	4 00
⑩6 15	7 45	Ar. HOUSTON	Lv	12 15	⑩11 00
⑩9 30	9 45	Ar. GALVESTON	Lv	⑩10 00	8 00

TULSA—FORT WORTH—HOUSTON

Frisco No. 507 M-K-T No. 27-11	★Frisco No. 505 M-K-T No. 25	TABLE T		M-K-T No. 24 Frisco No. 504	M-K-T No. 26 Frisco No. 510
⑩10 15	2 15	Lv. TULSA	Ar	7 55	5 50
4 50	7 22	Lv. Denison	Ar	1 35	11 08
6 20	9 02	Ar. Denton	Lv	11 58	9 25
⑦7 10	10 00	Lv. FORT WORTH	Ar	⑩11 00	8 30
11 40	1 17	Ar. Waco	Lv	7 20	5 20
1 00	2 45	Ar. Temple	Lv	6 55	4 00
⑩6 15	7 45	Ar. HOUSTON	Lv	12 15	⑩11 00
⑩9 30	9 45	Ar. GALVESTON	Lv	⑩10 00	8 00

TULSA—DALLAS—SAN ANTONIO

Frisco No. 507 M-K-T No. 7-1	★Frisco No. 505 M-K-T No. 5	TABLE U		M-K-T No. 4 Frisco No. 504	M-K-T No. 6 Frisco No. 510
⑩10 15	2 15	Lv. TULSA	Ar	7 55	5 50
4 42	7 30	Lv. Denison	Ar	1 45	11 10
7 05	9 57	Ar. Highland Park	Lv	⑩11 10	8 20
⑦7 15	10 05	Lv. DALLAS	Ar	⑩11 00	8 10
11 50	1 25	Ar. Waco	Lv	7 15	5 10
⑩2 28	⑩4 30	Ar. Austin	Lv	⑩6 55	⑩1 20
⑩4 30	⑩7 00	Ar. SAN ANTONIO	Lv	⑩1 30	⑩11 00

TULSA—FORT WORTH—SAN ANTONIO

Frisco No. 507 M-K-T No. 27-1	★Frisco No. 505 M-K-T No. 25-5	TABLE V		M-K-T No. 4-24 Frisco No. 504	M-K-T No. 6-26 Frisco No. 510
⑩10 15	2 15	Lv. TULSA	Ar	7 55	5 50
4 50	7 22	Lv. Denison	Ar	1 35	11 08
6 20	9 02	Ar. Denton	Lv	11 58	9 25
⑦7 10	10 00	Lv. FORT WORTH	Ar	⑩11 00	8 30
11 40	1 17	Ar. Waco	Lv	7 20	5 20
⑩2 28	⑩4 30	Ar. Austin	Lv	⑩6 55	⑩1 20
⑩4 30	⑩7 00	Ar. SAN ANTONIO	Lv	⑩1 30	⑩11 00

★ The Black Gold-Train 505.
 ① Pullman cars ready for occupancy at 9:30 P. M.
 ② Pullman cars may be occupied until 8:00 A. M.

③ Pullmans open for advance occupancy—See Table at bottom of page 4.
 ④ Permissive stop—See specific table.

⑤ Service by transfer at Waco.
 ⑥ Via bus between Houston and Galveston.

ST. LOUIS, SEDALIA, PARSONS, MUSKOGEE AND DENISON

Southbound—Read Down				Northbound—Read Up			
1 Daily Texas Special	7 Daily Blue-bonnet	5 Daily Katy Flyer	Mls.	6 Daily Katy Flyer	2 Daily Texas Special	8 Daily Blue-bonnet	
PM 05 30	PM 01 55	PM 01 55	0	AM 7 30	AM 08 30	AM 11 45	
<p>TICKETS by Telegraph (Prepaid Order System)</p> <p>Railroads provide a service for you in telegraphing tickets to relatives, friends, etc., account sickness, death, business, or for other reasons. It is done simply by depositing money with your local agent to cover cost of ticket—furnishing a limited amount of cash may be included. This service is handled quickly and proves of great convenience—many persons make use of it. Next time why not try this service.</p>				<p>TABLE 1 M.-K.-T. Lines</p> <p>ST. LOUIS (Union Station) Ar 7 30 Washington Avenue... Lv 7 19</p> <p>Missouri River West Alton Lv 8 30 Machens Lv 8 27 St. Charles Lv 8 10 Matson Lv 8 03 Augusta Lv 8 15 Dutrow Lv 8 03 Marthasville Lv 8 54 Trelawny Lv 4 40 Case Lv 4 15 McKittick Lv 4 07 Rhineland Lv 3 55 Portland Lv 3 26 Steedman Lv 3 26 Mokane Lv 3 18 Tebbetts Lv 3 06 North Jefferson Lv 2 45</p> <p>Jefferson City</p> <p>Hartsburg Lv 2 26 McBaine 8... Lv 1 59</p> <p>Columbia 3... Lv 1 10 University of Mo... Lv 2 30</p> <p>McBaine Lv 1 59 Rocheport Lv 1 36 New Franklin 2... Lv 1 20 Franklin Lv 1 15</p> <p>Missouri River Boonville Lv 1 02 Pilot Grove Lv 12 41 Pleasant Green Lv 12 30</p> <p>Lamine River Clifton City Lv 12 18 Beaman Lv 12 08 Sedalia Lv 11 57 Green Ridge Lv 11 29 Bryson 4... Lv 11 12 Windsor Lv 10 57 Calhoun Lv 10 51 Lewy Lv 10 40 Clinton Lv 10 24</p> <p>Grand River Ladue Lv 10 14 Montross Lv 10 03 Appleton City Lv 9 57 Lindale Lv 9 42 Rockville Lv 9 35 Osage River Lv 9 27 Schell City Lv 9 18 Harwood Lv 9 06 Walker 5... Lv 8 47 Nevada 5... Lv 8 29 Deerfield Lv 8 29 Eve, Mo. Lv 8 29 Fort Scott, Kan. Lv 8 29</p> <p>Marmaton River Hlatville Lv 8 06 Hepler Lv 7 58 Walnut Lv 7 44 St. Paul Lv 7 32</p> <p>Neosho River South Mound Lv 7 22 Parsons 1-4-9-10-11-13... Lv 7 10 (Please turn to Table 6 page 9.)</p> <p>Muskogee Lv 8 30 McAlester Lv 1 54 Denison Lv 11 30 Dallas (Union Station) Lv 8 10 Fort Worth Lv 8 10 Waco Lv 8 30 Temple Lv 5 30 Austin Lv 11 20 San Antonio Lv 11 00 Houston Lv 11 00 Galveston Lv 8 00</p>			

ST. LOUIS AND TEXAS

1 Texas Special	7 Blue-bonnet	TABLE 1-A Texas Special Route		2 Texas Special	8 Blue-bonnet
5 30	1 55	Lv.	ST. LOUIS	Ar	8 30
5 39	2 05	Lv.	Tower Grove	Ar	8 16
		Lv.	Webster Groves	Ar	11 33
		Lv.	Glendale (Berry Rd.)	Ar	
	4 23	Lv.	Rolla	Ar	8 52
8 11	4 43	Lv.	Newburg	Ar	8 30
9 45	6 14	Lv.	Lebanon	Ar	8 50
11 16	7 45	Lv.	Springfield	Ar	5 12
	8 38	Lv.	Aurora	Ar	5 40
12 13	8 10	Lv.	Monett	Ar	4 13
	9 57	Lv.	Neosho	Ar	2 60
		Lv.	Atton	Ar	1 35
		Lv.	Vinita	Ar	4 00
		Lv.	Vinita	Ar	12 13
		Lv.	Vinita	Ar	2 38
3 25	12 45	Lv.	Muskogee	Ar	10 25
	2 15	Lv.	McAlester	Ar	12 50
6 50	4 25	Lv.	Denison	Ar	8 50
9 18	7 05	Lv.	Highland Park	Ar	6 35
9 30	07 16	Lv.	Dallas	Ar	4 15
9 30	07 10	Lv.	Fort Worth	Ar	3 80
11 50		Lv.	Waco	Ar	6 00
12 43		Lv.	Temple	Ar	1 35
2 28		Lv.	Austin	Ar	12 43
4 30		Lv.	San Antonio	Ar	10 55
		Lv.	Houston	Ar	9 00

ANYWHERE . .
Via Express!

Railway Express rates are low, and include pick-up and delivery by motor truck in all cities and principal towns, without extra charge. Two receipts, one to the shipper, another to Railway Express on delivery, make sureness doubly sure. For service and information, phone your nearest Railway Express office.

SPECIAL SERVICE
— Without extra charge, a Western Union messenger will pick up your Railway Express packages on phone call, or you can deposit them at any Western Union office.

MOBERLY AND FRANKLIN

61 Mixed Daily Ex. Sun.	Mls.	TABLE 2 Moberly Division		50 Mixed Daily Ex. Sun.
10 00	0	Lv.	MOBERLY	Ar
10 35	9.7	Lv.	Higbee	Ar
	13.0	Lv.	Russell	Ar
10 55	18.2	Lv.	Burton	Ar
11 30	24.8	Lv.	Fayette	Ar
11 55	32.7	Lv.	Estill	Ar
12 15	35.8	Lv.	Franklin	Ar
12 25	38.7	Lv.	New Franklin 1	Ar

COLUMBIA AND MCBAIN

65 Mixed Daily	63 Mixed Daily	Mls. from St. Louis	TABLE 3 Columbia Branch		66 Mixed Daily	64 Mixed Daily
3 45	1 10	178.3	Lv.	COLUMBIA	Ar	6 10
3 56	1 21	175.3	Lv.	Limerick	Ar	2 22
4 00	1 25	173.8	Lv.	Turner	Ar	2 18
4 06	1 31	171.7	Lv.	Brushwood	Ar	2 13
4 10	1 35	170.6	Lv.	Daniel	Ar	2 09
4 20	1 45	169.8	Lv.	McBAIN 1	Ar	2 05

BRYSON AND PAOLA

57 Mixed Daily Ex. Sun.	Mls. from St. Louis	TABLE 4 Holden Division		68 Mixed Daily Ex. Sun.
12 01	243.8	Lv.	Bryson 1	Ar
12 24	250.0	Lv.	Sutherland	Ar
12 46	255.7	Lv.	Leston	Ar
12 55	258.8	Lv.	Post Oak	Ar
	264.7	Lv.	Chilhowee	Ar
	269.4	Lv.	Magnolia	Ar
	276.2	Lv.	Holden	Ar
	284.8	Lv.	Penwick	Ar
	287.0	Lv.	Gunn City	Ar
	290.7	Lv.	East Lynn	Ar
	297.5	Lv.	Harrisonville	Ar
	302.8	Lv.	Prattman	Ar
	306.8	Lv.	Freeman	Ar
	311.4	Lv.	West Line	Ar
	316.8	Lv.	Louisburg	Ar
	322.6	Lv.	Somerset	Ar
	330.1	Lv.	Paola (A)	Ar
	330.6	Lv.	PAOLA (B)	Ar

ELDORADO SPRINGS AND NEVADA

62 Mixed Daily Ex. Sun.	Mls.	TABLE 5 Eldorado Branch		63 Mixed Daily Ex. Sun.
6 45	0	Lv.	Eldorado Spgs.	Ar
7 13	7.1	Lv.	Dederick	Ar
7 28	11.4	Lv.	Handley	Ar
7 35	13.9	Lv.	WALKER 1	Ar
8 00	21.7	Lv.	Nevada 1	Ar

ST. LOUIS, KANSAS CITY, SAN ANTONIO, HOUSTON AND GALVESTON

Southbound—Read Down							Miles from St. Louis	TABLE 6	Northbound—Read Up	Daily				
Daily Motor	Daily Texas Special	Daily Bluebonnet		Daily Katy Flyer		Daily Katy Limited		M-K-T Lines		Daily Katy Flyer	Daily Katy Limited	Daily Bluebonnet	Daily Texas Social	Daily Motor
35 AM	1 PM	27 PM	7 PM	25 AM	6 PM	23-3 PM		0. 227.1 386.6		6 AM	26 PM	4-24 PM	8 AM	28 AM
	⑤ 30		⑦ 55		① 155		Lv. St. Louis ① Union Station Ar	7 30			⑧ 1145		⑧ 30	
8 30 11 40		6 30 9 00		8 30 11 40		⑩ 10 1 20	Lv. Sedalia Ar	11 10						10 10 7 00
12 10 12 25 Arrive Joplin 2 35 table 13		9 15		12 05		1 40	Lv. Parsons ① Union Station Ar	10 10 7 00	1 50 10 00		7 15 4 05			6 30 8 15 Leave Joplin 4 20 table 13
	SPECIAL		BLUEBONNET		12 25	1 59	Lv. Parsons 1-2-7-9-10-11-13. Ar	6 40	9 45		3 50			
		9 35		12 37			Lv. Shaner 13. Ar	⑥ ②	/ 9 28					
		9 48		12 37			Lv. Labette Ar	6 12	/ 9 19					
		10 30		1 72		2 55	Lv. Oswego Ar		/ 9 05		2 30			
		11 41		1 57		3 31	Lv. Labette River Ar	5 58	/ 8 47					
				2 30		3 43	Lv. Chetopa, Kan. Ar		8 47					
						4 05	Lv. Welch Ar		8 38					
							Lv. Blue Jacket Ar		8 15					
							Lv. Vinita Ar		7 57					
							Lv. Big Cabin Ar		7 47					
							Lv. Adair Ar		7 32					
							Lv. Pryor Ar		7 20					
							Lv. Choteau Ar		/ 7 11					
							Lv. Mazie Ar		6 55					
							Lv. Wagoner Ar							
							Lv. Verdigris River Ar							
							Lv. Arkansas River Ar							
							Lv. Muskogee 12. Ar		3 40	6 35	12 50	12 55	⑩ 25	
							Lv. Oktaha Ar		3 30	6 15	12 30		⑩ 16	16
							Lv. Rentiesville Ar		3 07					
							Lv. Checotah Ar		2 55					
							Lv. North Canadian River Ar							
							Lv. Eufaula Ar		2 37					
							Lv. So. Canadian River Ar							
							Lv. Canadian Ar		2 23					
							Lv. Crowder Ar		2 17					
							Lv. North McAlester 14 Ar		1 59					
							Lv. McAlester 14 Ar		1 54	4 20				
							Lv. Savanna Ar		1 37		11 05			
							Lv. Kiowa Ar		1 26					
							Lv. Siringtown Ar		12 59					
							Lv. Atoka 9 Ar		12 48	3 25				
							Lv. Tushka Ar		12 38					
							Lv. Caney Ar		12 28					
							Lv. Caddo Ar		12 18					
							Lv. Blue River Ar							
							Lv. Durant Ar		12 02	2 40		9 29		⑦ 14
							Lv. Calera Ar		11 51					
							Lv. Colbert, Okla. Ar		11 42					
							Lv. Red River Ar							
							Ar. ① Denison Texas 16-22. Lv		11 30	2 08	9 00			6 45
							For Local Time South of Denison, See Tables 7 and 8.							
							Lv. ① Denison Texas 16-22. Ar		11 10	11 08	1 45	1 55	8 40	8 35
							Lv. ① Dallas (Union Station) Ar		8 10	① 11 00	△	△	6 00	△
							Lv. Hillsboro Ar		7 40	10 00	8 08			6 30
							Lv. ① Fort Worth Ar		⑧	8 30	△	① 11 00	5 50	△
							Lv. Waco Ar		△	7 35	9 45			③ 50
							Lv. Temple Ar		5 10	5 20	7 15	7 20		
							Lv. Austin Ar		3 30		6 10			
							Lv. San Antonio Ar		① 1 20	3 55				
							Lv. Houston Ar		① 11 00	1 30				
							Lv. Galveston ① Union Station. Ar		⑧ 00	⑩ 00				

REFERENCE NOTES FOR TABLES 1 AND 6

- / Stops on signal only for revenue passengers.
- * Breakfast Stop. Orders will be taken by the porter.
- ① Stops to receive or discharge revenue passengers.
- ① Pullmans ready for occupancy at 9:30 PM.
- ① Pullmans may be occupied until 8:00 A.M.
- ① Pullmans open for advance occupancy—See Table at bottom of page 1.
- ① Union Station—Used by all lines.
- ① Taxi service available to and from North Jefferson.
- ② Stops to receive revenue passengers for regular stops south of Denison and to discharge revenue passengers from north of Muskogee.
- ② Stops to receive revenue passengers for Kansas City and stations South Mound, Kan. to St. Louis inclusive; also, to discharge revenue passengers from south of Muskogee.
- ② Stops to receive revenue passengers for Kansas City and stations on Neosho Division.
- ② Stops to receive revenue passengers for Dallas and Fort Worth and to discharge revenue passengers from Kansas City.
- ② Stops to discharge revenue passengers from Dallas and north.
- ② Stops to receive revenue passengers for Dallas and north.
- ② Service by transfer at Waco, between Train 1 and Train 11.
- ② Joint Station—transfer necessary only to stations of St. L.-S. W.; C. R. Y. & P.; G. C. & S. F.; and Sou. Pac.
- ② Via Bus between Houston and Galveston.
- ② No baggage checked for this train to or from point designated.
- ④ No connecting service between Fort Worth and Waco.
- ④ Stops regularly at Tower Grove; also at Glendale (Berry Road Crossing) on advance notice for Webster Groves and Kirkwood passengers destined Texas—See Table 1-A.
- ④ Stops to receive revenue passengers for all stations.
- ④ Stops to discharge revenue passengers from all stations.
- ④ Stops regularly at Tower Grove and at Webster Groves on advance notice—See Table 1-A.

ST. LOUIS, DENISON, WACO, SAN ANTONIO, HOUSTON AND GALVESTON

Southbound—Read Down				Miles from St. Louis	TABLE 7 M.-K.-T. Lines				Northbound—Read Up			
Texas Special	The Bluebonnet	Katy Flyer	The Katy Limited		Katy Flyer	The Katy Limited	The Bluebonnet	Texas Special				
PM ⑤ 30	PM ① 55 6 30 9 15 ② 10 15	PM ③ 11 55 8 30 12 05 2 16	PM ④ 10 10 1 40	0 386.6 555.1 503.6 566.0 660.9	Lv. St. Louis ② Union Station Ar Lv. Kansas City ② Union Station Ar Lv. Parsons Ar Lv. ⑦ ⑧ Tulsa Ar Lv. Muskogee Ar Lv. McAlester Ar Lv. ① Denison Ar	AM 7 30 10 10 6 40 6 50 3 30 1 64 11 30	PM ⑥ 11 45 7 15 3 50	AM ⑧ 8 30 △ 1				
3 25 6 50	12 45 2 15 4 25	3 06 4 45 7 05	4 45 6 30 9 05	Mh. from Denton	Via Dallas	6 26 4 24	8 18 2 12	8 18 2 12				
11 7 02	1 7 00	27 4 50	7 4 42	25 7 22	5 7 30 7 50	23 9 30	3 9 26	3 9 26				
☆ TEXAS SPECIAL (Via Fort Worth—See below)	THE BLUEBONNET (To Fort Worth—See below)	KATY FLYER (Via Fort Worth—See below)	THE BLUEBONNET (To Fort Worth—See below)	THE KATY LIMITED (To Fort Worth—See below)	THE KATY LIMITED (To Fort Worth—See below)	THE KATY LIMITED (To Fort Worth—See below)	THE KATY LIMITED (To Fort Worth—See below)	THE KATY LIMITED (To Fort Worth—See below)				
11 7 02	1 7 00	27 4 50	7 4 42	25 7 22	5 7 30 7 50	23 9 30	3 9 26	3 9 26				
11 7 02	1 7 00	27 4 50	7 4 42	25 7 22	5 7 30 7 50	23 9 30	3 9 26	3 9 26				
11 7 02	1 7 00	27 4 50	7 4 42	25 7 22	5 7 30 7 50	23 9 30	3 9 26	3 9 26				
11 7 02	1 7 00	27 4 50	7 4 42	25 7 22	5 7 30 7 50	23 9 30	3 9 26	3 9 26				
11 7 02	1 7 00	27 4 50	7 4 42	25 7 22	5 7 30 7 50	23 9 30	3 9 26	3 9 26				
11 7 02	1 7 00	27 4 50	7 4 42	25 7 22	5 7 30 7 50	23 9 30	3 9 26	3 9 26				
11 7 02	1 7 00	27 4 50	7 4 42	25 7 22	5 7 30 7 50	23 9 30	3 9 26	3 9 26				
11 7 02	1 7 00	27 4 50	7 4 42	25 7 22	5 7 30 7 50	23 9 30	3 9 26	3 9 26				
11 7 02	1 7 00	27 4 50	7 4 42	25 7 22	5 7 30 7 50	23 9 30	3 9 26	3 9 26				
11 7 02	1 7 00	27 4 50	7 4 42	25 7 22	5 7 30 7 50	23 9 30	3 9 26	3 9 26				
11 7 02	1 7 00	27 4 50	7 4 42	25 7 22	5 7 30 7 50	23 9 30	3 9 26	3 9 26				
11 7 02	1 7 00	27 4 50	7 4 42	25 7 22	5 7 30 7 50	23 9 30	3 9 26	3 9 26				
11 7 02	1 7 00	27 4 50	7 4 42	25 7 22	5 7 30 7 50	23 9 30	3 9 26	3 9 26				
11 7 02	1 7 00	27 4 50	7 4 42	25 7 22	5 7 30 7 50	23 9 30	3 9 26	3 9 26				
11 7 02	1 7 00	27 4 50	7 4 42	25 7 22	5 7 30 7 50	23 9 30	3 9 26	3 9 26				
11 7 02	1 7 00	27 4 50	7 4 42	25 7 22	5 7 30 7 50	23 9 30	3 9 26	3 9 26				
11 7 02	1 7 00	27 4 50	7 4 42	25 7 22	5 7 30 7 50	23 9 30	3 9 26	3 9 26				
11 7 02	1 7 00	27 4 50	7 4 42	25 7 22	5 7 30 7 50	23 9 30	3 9 26	3 9 26				
11 7 02	1 7 00	27 4 50	7 4 42	25 7 22	5 7 30 7 50	23 9 30	3 9 26	3 9 26				
11 7 02	1 7 00	27 4 50	7 4 42	25 7 22	5 7 30 7 50	23 9 30	3 9 26	3 9 26				
11 7 02	1 7 00	27 4 50	7 4 42	25 7 22	5 7 30 7 50	23 9 30	3 9 26	3 9 26				
11 7 02	1 7 00	27 4 50	7 4 42	25 7 22	5 7 30 7 50	23 9 30	3 9 26	3 9 26				
11 7 02	1 7 00	27 4 50	7 4 42	25 7 22	5 7 30 7 50	23 9 30	3 9 26	3 9 26				
11 7 02	1 7 00	27 4 50	7 4 42	25 7 22	5 7 30 7 50	23 9 30	3 9 26	3 9 26				
11 7 02	1 7 00	27 4 50	7 4 42	25 7 22	5 7 30 7 50	23 9 30	3 9 26	3 9 26				
11 7 02	1 7 00	27 4 50	7 4 42	25 7 22	5 7 30 7 50	23 9 30	3 9 26	3 9 26				
11 7 02	1 7 00	27 4 50	7 4 42	25 7 22	5 7 30 7 50	23 9 30	3 9 26	3 9 26				
11 7 02	1 7 00	27 4 50	7 4 42	25 7 22	5 7 30 7 50	23 9 30	3 9 26	3 9 26				
11 7 02	1 7 00	27 4 50	7 4 42	25 7 22	5 7 30 7 50	23 9 30	3 9 26	3 9 26				
11 7 02	1 7 00	27 4 50	7 4 42	25 7 22	5 7 30 7 50	23 9 30	3 9 26	3 9 26				
11 7 02	1 7 00	27 4 50	7 4 42	25 7 22	5 7 30 7 50	23 9 30	3 9 26	3 9 26				
11 7 02	1 7 00	27 4 50	7 4 42	25 7 22	5 7 30 7 50	23 9 30	3 9 26	3 9 26				
11 7 02	1 7 00	27 4 50	7 4 42	25 7 22	5 7 30 7 50	23 9 30	3 9 26	3 9 26				
11 7 02	1 7 00	27 4 50	7 4 42	25 7 22	5 7 30 7 50	23 9 30	3 9 26	3 9 26				
11 7 02	1 7 00	27 4 50	7 4 42	25 7 22	5 7 30 7 50	23 9 30	3 9 26	3 9 26				
11 7 02	1 7 00	27 4 50	7 4 42	25 7 22	5 7 30 7 50	23 9 30	3 9 26	3 9 26				
11 7 02	1 7 00	27 4 50	7 4 42	25 7 22	5 7 30 7 50	23 9 30	3 9 26	3 9 26				
11 7 02	1 7 00	27 4 50	7 4 42	25 7 22	5 7 30 7 50	23 9 30	3 9 26	3 9 26				
11 7 02	1 7 00	27 4 50	7 4 42	25 7 22	5 7 30 7 50	23 9 30	3 9 26	3 9 26				
11 7 02	1 7 00	27 4 50	7 4 42	25 7 22	5 7 30 7 50	23 9 30	3 9 26	3 9 26				
11 7 02	1 7 00	27 4 50	7 4 42	25 7 22	5 7 30 7 50	23 9 30	3 9 26	3 9 26				
11 7 02	1 7 00	27 4 50	7 4 42	25 7 22	5 7 30 7 50	23 9 30	3 9 26	3 9 26				
11 7 02	1 7 00	27 4 50	7 4 42	25 7 22	5 7 30 7 50	23 9 30	3 9 26	3 9 26				
11 7 02	1 7 00	27 4 50	7 4 42	25 7 22	5 7 30 7 50	23 9 30	3 9 26	3 9 26				
11 7 02	1 7 00	27 4 50	7 4 42	25 7 22	5 7 30 7 50	23 9 30	3 9 26	3 9 26				
11 7 02	1 7 00	27 4 50	7 4 42	25 7 22	5 7 30 7 50	23 9 30	3 9 26	3 9 26				
11 7 02	1 7 00	27 4 50	7 4 42	25 7 22	5 7 30 7 50	23 9 30	3 9 26	3 9 26				
11 7 02	1 7 00	27 4 50	7 4 42	25 7 22	5 7 30 7 50	23 9 30	3 9 26	3 9 26				
11 7 02	1 7 00	27 4 50	7 4 42	25 7 22	5 7 30 7 50	23 9 30	3 9 26	3 9 26				
11 7 02	1 7 00	27 4 50	7 4 42	25 7 22	5 7 30 7 50	23 9 30	3 9 26	3 9 26				
11 7 02	1 7 00	27 4 50	7 4 42	25 7 22	5 7 30 7 50	23 9 30	3 9 26	3 9 26				
11 7 02	1 7 00	27 4 50	7 4 42	25 7 22	5 7 30 7 50	23 9 30	3 9 26	3 9 26				
11 7 02	1 7 00	27 4 50	7 4 42	25 7 22	5 7 30 7 50	23 9 30	3 9 26	3 9 26				
11 7 02	1 7 00	27 4 50	7 4 42	25 7 22	5 7 30 7 50	23 9 30	3 9 26	3 9 26				
11 7 02	1 7 00	27 4 50	7 4 42	25 7 22	5 7 30 7 50	23 9 30	3 9 26	3 9 26				
11 7 02	1 7 00	27 4 50	7 4 42	25 7 22	5 7 30 7 50	23 9 30	3 9 26	3 9 26				
11 7 02	1 7 00	27 4 50	7 4 42	25 7 22	5 7 30 7 50	23 9 30	3 9 26	3 9 26				
11 7 02	1 7 00	27 4 50	7 4 42	25 7 22	5 7 30 7 50	23 9 30	3 9 26	3 9 26				
11 7 02	1 7 00	27										

DALLAS, FORT WORTH, WACO, AUSTIN, SAN ANTONIO, HOUSTON, GALVESTON

Southbound—Read Down

Northbound—Read Up

KATY LINES	Katy Limited		Katy Flyer		Texas Special		Miles from St. Louis	TABLE 8 M-K-T Lines		Katy Limited		Katy Flyer		Texas Special	
	PM	AM	PM	AM	PM	AM		PM	AM	PM	AM	PM	AM	PM	AM
serve these 8 Important Texas Cities	12 40	9 35	11 00	9 40	9 35	9 40	787.1	Lv. Dallas	10 00	10 00	7 40	7 40	3 50		
DALLAS	6 03						757.3	Lv. Fort Worth	9 45	9 45	7 35	7 35	3 50		
FORT WORTH	6 13		3 22					San Antonio Division	24	4	26	6	2		
AUSTIN	6 25							Waco 25	6 50	7 00	4 45	4 30	1 30		
SAN ANTONIO	6 46	3 37						Hewitt	6 35						
HOUSTON	6 50	4 30						Lorena	6 28						
GALVESTON	7 40	5 34						Bruceville							
WACO	8 02	5 58						Eddy	6 17						
WICHITA FALLS	9 00	7 00						Troy	6 06						
								Temple 21	6 58						
								Little River	6 58						
								Little River	5 26	6 42					
								Holland	6 13						
								Bartlett	6 34						
								Granger	5 25						
								Weir	5 08						
								San Gabriel River							
								Georgetown				2 20			
								Pflugerville							
								Sprinkle							
								Austin							
								(State Capital)							
								Colorado River							
								Rio Blanco River							
								San Marcos 17				12 14			
								Guadalupe River							
								New Braunfels							
								Cornal							
								San Antonio River							
								SAN ANTONIO							
								(See Note ②)							
								Houston Division							
								San Gabriel River							
								Circleville							
								Taylor							
								Coupland							
								Elgin							
								Sayers							
								Calvin							
								Glenham							
								Bastrop							
								Colorado River							
								Hills Prairie							
								Upton							
								Smithville 17							
								Kirtley							
								West Point							
								Plum							
								Colorado River							
								La Grange							
								Halsted							
								Fayetteville							
								Klimek							
								Pisek							
								New Umm							
								Cat Spring							
								Sealy							
								San Felipe							
								Braxos River							
								Brookshire							
								Katy							
								Barker							
								Addicks							
								Houston Heights							
								HOUSTON 18-24							
								(Main St. Station)							
								Buffalo Bayou							
								Harrisburg							
								League City							
								Dickinson							
								La Marque							
								Galveston Bay							
								GALVESTON Union Sta.							

Famous!

Table d'Hote Meals

"Nothing finer than Katy meals" . . . say patrons. Enter the air-conditioned diner—choose one of Katy's famous meals, and discover the zest it adds to your journey!

Breakfasts 40 to 90c
Luncheon \$1.00
Dinner . . \$1.25

Notes For Tables 7 and 8
② Stops to discharge revenue passengers from any station San Antonio to Weir inclusive.
③ Stops to receive revenue passengers for Dallas and north that are regular stops for No. 2

④ Stops to receive revenue passengers for Waco and north that are regular stops for Nos. 8 and 28.

⑤ Joint Station—transfer necessary only to stations of St. L. & S. W., C. R. I. & P., G. C. & S. P. and Sou. Pac.

⑥ Via Bus between Houston and Galveston.

⑦ No baggage checked for this train to or from point designated.

⑧ No connecting service between Fort Worth and Waco.

⑨ Via Frisco between Tulsa and Denison.

⑩ Station for Fort Sam Houston, Arsenal, Brooks Field, Kelly Field, Camp Stanley, Camp Normoy, Randolph Field and Duncan Field.

⑪ Stops regularly at Tower Grove; also at Glendale (Berry Road Crossing) on advance notice for Webster Groves and Kirkwood passengers destined Texas.

⑫ Stops to discharge revenue passengers from north of Denison and to receive revenue passengers for regular stops of trains 11 and 1.

⑬ Stops regularly at Tower Grove and at Webster Groves on advance notice—See Table 1-A.

⑭ Stops to discharge revenue passengers from North of Denison, from Frisco train 505 and from West of Whitesboro.

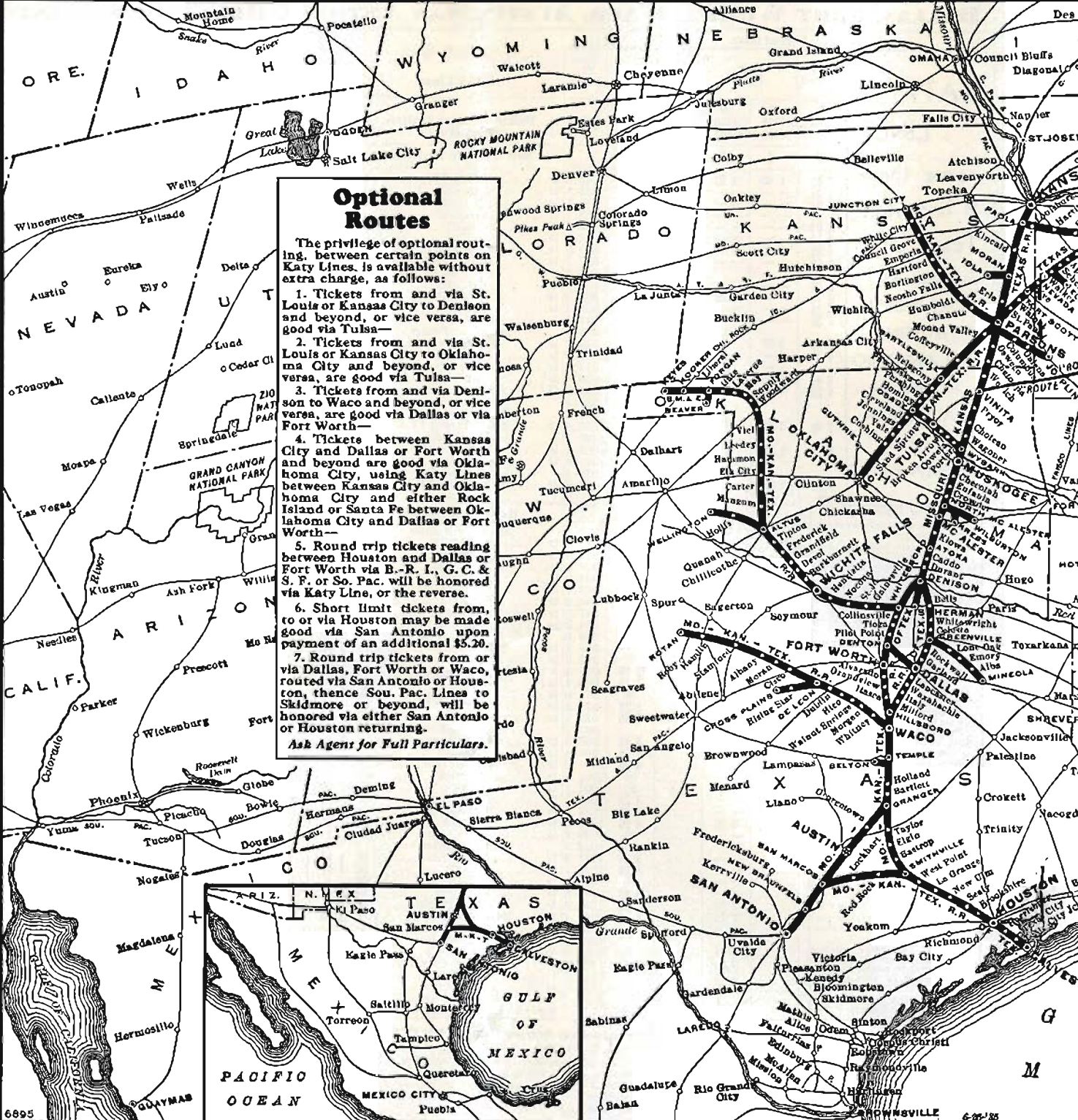
⑮ Stops to receive revenue passengers to Muskogee and beyond.

⑯ Stops to discharge revenue passengers from north of Denison and from Frisco train 505; also, to receive revenue passengers for Waco and beyond where advance arrangements are made.

Permissive Stops For "LIMITED" Trains

Trains 3 and 23, THE KATY LIMITED, will stop at any station in Texas, to discharge revenue passengers (including drovers' tickets) from Kansas City and beyond. Trains 8 and 25, THE KATY FLYER, will stop at any station in Texas, to discharge revenue passengers from Kansas City; also to discharge revenue passengers from all stations St. Louis to South Mound, Kan., inclusive. Trains 6 and 26, THE KATY FLYER, northbound, will stop at any station in Texas or Oklahoma, to receive revenue passengers for Kansas City, also for stations South Mound, Kan. to St. Louis, inclusive.

Notes For Tables 7 and 8
/ Stops on signal only for revenue passengers.
① Pullman cars ready for occupancy at 9:30 PM.
② Pullman cars may be occupied until 9:30 A.M.
③ Pullman open for advance occupancy—see Table at bottom of page 4.
④ Union Station—Used by all lines.
⑤ Stops to discharge revenue passengers from Fort Worth and south, and to receive revenue passengers for regular stops north of Denison.
⑥ Stops to discharge revenue passengers from south of Waco and to receive revenue passengers for regular stops of Nos. 24 and 4.
⑦ Stops to discharge revenue passengers from north of Denison and from Frisco train 505.
⑧ Stops to discharge revenue passengers from Dallas and beyond.
⑨ Stops to receive revenue passengers for Dallas and north.
⑩ Stops to discharge revenue passengers from north of Muskogee and from Frisco train 507.
⑪ Stops to discharge revenue passengers from Denton and south and to receive revenue passengers for regular stops of No. 2 north of Denison.
⑫ Stops to receive revenue passengers for St. Louis and Kansas City.
⑬ Stops to discharge revenue passengers from Denton and south and to receive revenue passengers for Denison and north.
⑭ Stops to discharge revenue passengers from north of Denison, from Frisco train 505 or from West of Whitesboro; also to receive revenue passengers for regular stops of Nos. 25 and 5 south of Fort Worth.
⑮ Stops to discharge revenue passengers from Dallas or Fort Worth and beyond.
(Cont'd on right hand side)

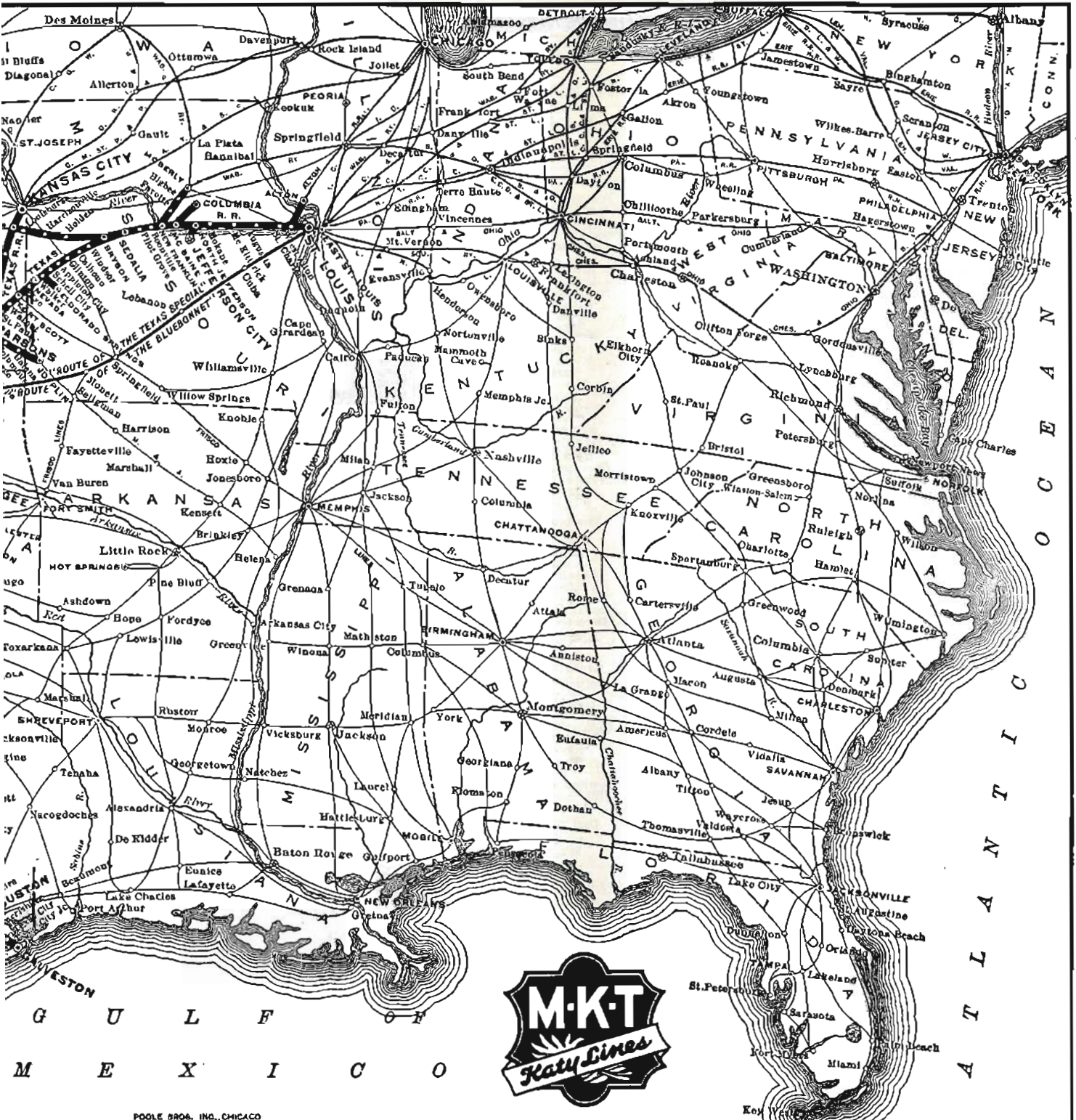


Optional Routes

The privilege of optional routing, between certain points on Katy Lines, is available without extra charge, as follows:

1. Tickets from and via St. Louis or Kansas City to Denison and beyond, or vice versa, are good via Tulsa—
2. Tickets from and via St. Louis or Kansas City to Oklahoma City and beyond, or vice versa, are good via Tulsa—
3. Tickets from and via Denison to Waco and beyond, or vice versa, are good via Dallas or via Fort Worth—
4. Tickets between Kansas City and Dallas or Fort Worth and beyond are good via Oklahoma City, using Katy Lines between Kansas City and Oklahoma City and either Rock Island or Santa Fe between Oklahoma City and Dallas or Fort Worth—
5. Round trip tickets reading between Houston and Dallas or Fort Worth via B.-R. I., G. C. & S. F. or So. Pac. will be honored via Katy Line, or the reverse.
6. Short limit tickets from, to or via Houston may be made good via San Antonio upon payment of an additional \$5.20.
7. Round trip tickets from or via Dallas, Fort Worth or Waco, routed via San Antonio or Houston, thence Sou. Pac. Lines to Skidmore or beyond, will be honored via either San Antonio or Houston returning.

Ask Agent for Full Particulars.



KANSAS CITY, PARSONS, MUSKOGEE, MCALESTER AND TEXAS POINTS

Southbound—Read Down

Northbound—Read Up

Delicious!

COACH MEALS

Tempting dishes . . . satisfying, wholesome meals, are served on trays at your seat in coaches. These economy meals available on all Katy trains carrying dining cars.

Breakfast . . . 30c
 Luncheon . . . 35c
 Dinner 40c

NOTICE

Trains do not stop where no time is shown.

Black face figures immediately following certain stations refer to tables showing time of branch line trains which connect at points designated.

For local time on main line South of Parsons, see Tables 6, 7 and 8; between Parsons and Oklahoma City, see Table 10; between Parsons and Joplin, see Table 13.

REFERENCE

NOTES

1 Stops on signal only for revenue passengers.

2 Pullman cars ready for occupancy at 9:30 P.M.

3 Pullman cars may be occupied until 8:00 A.M.

4 Pullmans open for advance occupancy—See Table at bottom of page 4.

5 Stops to receive revenue passengers for regular stops of No. 23 south of Osage; also for regular stops of Nos. 3 and 23 in Texas.

6 Stops to discharge revenue passengers from south of Parsons and to receive revenue passengers for Kansas City.

7 Stops to discharge revenue passengers from south of Parsons.

8 Stops to receive revenue passengers south of Denison and to discharge revenue passengers from north of Muskogee.

(Continued on other side)

	23 The Sooner Daily	23-3 Katy Limited Daily	27-7 Blue-bonnet Daily	25-5 Katy Flyer Daily	Miles from Kan. City
	PM	PM	PM	AM	
	①10 10 11 05	②10 10 11 05	5 30 6 25	8 30 9 25	
	↓	↓	↓	↓	
	1 20 AM	1 20 AM	8 40	11 40	
	↓	↓	9 00	12 06	
	↓	↓	9 15	12 06	
	↓	↓	9 35	12 26	
	↓	↓	9 48	12 37	
	↓	↓	10 30	1 22	
	↓	↓	3 31	1 57	
	↓	↓	4 05	2 30	
	↓	↓	4 30	2 55	
	↓	↓	4 45	3 05	
	↓	↓	5 17	3 38	
	↓	↓	5 41	3 58	
	↓	↓	6 01	4 15	
	↓	↓	6 30	4 45	
	↓	↓	7 30	5 41	
	↓	↓	8 06	6 28	
	↓	↓	8 26	6 28	
	↓	↓	8 55	7 06	
	↓	↓	9 25	7 42	
	↓	↓	9 45	7 59	
	↓	↓	10 22	8 48	
	↓	↓	10 23	8 48	
	↓	↓	11 24	9 35	
	↓	↓	11 43	10 05	
	↓	↓	②12 06	④4 57	
	↓	↓	②12 45	④5 17	
	↓	↓	②12 45	④5 17	
	↓	↓	②1 34	④5 58	
	↓	↓	②1 40	④6 02	
	↓	↓	②3 25	④7 00	
	↓	↓	9 30	4 50	
	↓	↓	9 35	5 30	
	↓	↓	11 50	6 20	
	↓	↓	7 02	⑦7 10	
	↓	↓	7 40	⑦9 40	
	↓	↓	8 35	⑦10 00	
	↓	↓	9 30	⑦11 00	
	↓	↓	9 40	⑦11 00	
	↓	↓	10 57	⑦12 27	
	↓	↓	11 40	⑦1 17	
	↓	↓	11 55	⑦1 40	
	↓	↓	12 43	⑦2 35	
	↓	↓	②5 25	④3 37	
	↓	↓	②5 25	④3 37	
	↓	↓	②5 46	④3 37	
	↓	↓	②6 28	④4 30	
	↓	↓	②6 45	④5 34	
	↓	↓	②7 40	④5 58	
	↓	↓	②8 02	④7 00	
	↓	↓	②9 00	④7 00	
	↓	↓	12 05	1 50	
	↓	↓	1 00	2 45	
	↓	↓	1 40	3 43	
	↓	↓	1 55	4 09	
	↓	↓	②2 19	4 36	
	↓	↓	②2 47	4 58	
	↓	↓	②3 10	5 34	
	↓	↓	②3 46	6 35	
	↓	↓	②4 55	7 45	
	↓	↓	②6 15	8 94	
	↓	↓	②9 30	9 45	

TABLE 9		M.-K.-T. Lines	
Lv	Ar	Lv	Ar
0	2	42.2	49.1
Lv	Ar	Lv	Ar
53.8	60.7	63.8	69.2
Lv	Ar	Lv	Ar
67.7	77.7	82.0	86.2
Lv	Ar	Lv	Ar
88.2	93.9	102.8	105.6
Lv	Ar	Lv	Ar
109.6	111.8	119.9	123.4
Lv	Ar	Lv	Ar
134.0	136.0	150.4	159.6
Lv	Ar	Lv	Ar
188.4	213.1	237.5	253.0
Lv	Ar	Lv	Ar
274.2	287.6	300.6	315.4
Lv	Ar	Lv	Ar
359.9	379.6	398.9	410.3
Lv	Ar	Lv	Ar
410.3	423.7	450.7	482.4
Lv	Ar	Lv	Ar
512.8	516.7	516.7	547.5
Lv	Ar	Lv	Ar
582.6	616.3	410.3	435.1
Lv	Ar	Lv	Ar
475.1	475.1	506.7	506.7
Lv	Ar	Lv	Ar
561.3	561.3	595.0	629.5
Lv	Ar	Lv	Ar
629.5	657.5	672.7	704.9
Lv	Ar	Lv	Ar
735.9	752.8	788.1	595.0
Lv	Ar	Lv	Ar
629.5	657.5	668.4	684.3
Lv	Ar	Lv	Ar
718.8	737.8	784.9	833.5
Lv	Ar	Lv	Ar
883.0	883.0	595.0	629.5
Lv	Ar	Lv	Ar
668.4	684.3	704.9	735.9
Lv	Ar	Lv	Ar
784.9	833.5	883.0	883.0
Lv	Ar	Lv	Ar
883.0	883.0	883.0	883.0
Lv	Ar	Lv	Ar
883.0	883.0	883.0	883.0
Lv	Ar	Lv	Ar
883.0	883.0	883.0	883.0

	8-28 Blue-bonnet Daily	4-24 Katy Limited Daily	6-26 Katy Flyer Daily	28 The Sooner Daily
	AM	PM	PM	AM
	7 15	1 50	10 10	7 15
	↓	↓	↓	↓
	12 50	12 50	9 10	△
	↓	↓	↓	↓
	12 27	12 15	12 08	①
	↓	↓	↓	↓
	11 58	11 58	11 58	②
	↓	↓	↓	↓
	11 44	11 36	11 28	③
	↓	↓	↓	↓
	11 20	11 12	11 04	④
	↓	↓	↓	↓
	10 54	10 48	10 40	⑤
	↓	↓	↓	↓
	10 36	10 24	10 15	⑥
	↓	↓	↓	↓
	10 00	9 45	9 30	⑦
	↓	↓	↓	↓
	9 19	9 05	8 50	⑧
	↓	↓	↓	↓
	8 15	8 00	7 45	⑨
	↓	↓	↓	↓
	7 32	7 15	7 00	⑩
	↓	↓	↓	↓
	6 55	6 38	6 20	⑪
	↓	↓	↓	↓
	6 15	6 00	5 45	⑫
	↓	↓	↓	↓
	4 20	4 05	3 50	⑬
	↓	↓	↓	↓
	3 25	3 10	2 55	⑭
	↓	↓	↓	↓
	2 40	2 25	2 10	⑮
	↓	↓	↓	↓
	2 08	1 45	1 30	⑯

NOTICE

Trains do not stop where no time is shown.

Passengers should apply to Station Ticket Agent for further information as these Time Tables are subject to change without notice.

For particulars of sleeping car and coach service, see page 5.

Black face figures immediately following stations refer to tables showing time of branch line trains which connect at such points.

REFERENCE NOTES

FOR PAGE 15

The SOONER, trains 23 and 28, Pullman and receiving chair car between Kansas City and Bartlesville-Oklahoma City.

Stops on signal only for revenue passengers.

Pullman cars ready for occupancy at 9:30 P. M.

Pullman cars may be occupied until 8:00 A. M.

Union Station—Used by all lines.

Stops to discharge revenue passengers from Oklahoma City; and to receive for regular stops north of Parsons including Kincaid and Parker; also Neosho Division.

Stops to discharge revenue passengers from Kansas City and Paola.

Stops to discharge revenue passengers from Kansas City and Paola and to receive revenue passengers for Oklahoma City.

Stops to discharge revenue passengers reported for MoPac train 117.

ST. LOUIS, KANSAS CITY, COFFEYVILLE, BARTLESVILLE, OKLAHOMA CITY

Southbound—Read down			TABLE 10 M.-K.-T. Lines		Northbound—Read up	
The Sooner	Flyer	Miles from Kan. City		Flyer	The Sooner	
23 PM	6 PM	26		26 AM	6 AM	28
11 25	11 25		Lv. ST. LOUIS Union Station	7 30		
			Ar. Parsons 1-2-7-9-10-11-13	7 10		
10 10	8 30	0	Lv. KANSAS CITY Union Station	7 15		
1 20	11 40	136.0	Ar. Parsons	7 00	4 05	
23	26			28	28	
1 40	11 55	136.0	Lv. Parsons 1-2-7-9-10-11-13	6 40	3 45	
	12 15	148.2	Lv. Mound Valley	6 15		
	12 27	156.5	Lv. Angola	6 02		
2 35	12 47	166.9	Lv. Verdigris River		2 50	
2 45	12 54	170.1	Lv. Coffeyville, Kan.	5 45		
	1 03	175.6	Lv. South Coffeyville, Okla.	5 28		
2 45	1 12	182.1	Lv. Noxie	5 19		
	1 21	189.3	Lv. Wann	5 10		
	1 28	192.9	Lv. Warsaw	5 03		
3 30	1 40	197.1	Lv. Deway	4 55	1 55	
		197.8	Lv. Bartlesville			
		197.8	Lv. Caney River			
	1 59	207.2	Lv. Okesa	4 27		
	2 16	210.7	Lv. Nelagony	4 09		
4 10	2 23	220.3	Lv. Pershing	4 04	1 09	
	2 32	224.9	Lv. Wynona	3 57		
	2 48	235.2	Lv. Hominy	3 41	12 48	
	3 05	244.8	Lv. Osage 12	3 25		
	4 25		Ar. TULSA	4 40		
	1 40		Lv. Osage 12	4 25		
	3 10	244.8	Lv. Arkansas River	3 20		
		247.0	Lv. Cleveland			
4 55	3 15	255.7	Lv. Hallett	3 15	12 30	
	3 30	259.4	Lv. Jennings	3 04		
5 29	3 53	269.6	Lv. Yale	2 57		
		274.6	Lv. Cimarron River	2 47		
5 50	4 17	279.4	Lv. Cushing	2 37	11 35	
	4 26	289.8	Lv. Agra	2 27		
	4 37	296.2	Lv. Tryon	2 17		
	4 46	301.0	Lv. Carney	2 09		
	5 11	306.5	Lv. Falls	1 56		
	5 22	318.3	Lv. Luther	1 45		
	5 34	323.9	Lv. Arcadia	1 33		
	5 46	331.4	Lv. Witcher	1 22		
7 30	6 10	343.1	Ar. OKLAHOMA CITY	12 30		

JUNCTION CITY AND PARSONS

TABLE 11 Neosho Division		38 Motor Daily
Mts.		
0.	Lv. JUNCT'N CY. Ar	11 50
1.9	Lv. Smoky Hill River	
5.1	Lv. Wretford	11 35
10.7	Lv. Olson	
13.0	Lv. Skiddy	11 16
19.2	Lv. White City	11 01
24.3	Lv. Parkerville	10 47
31.1	Lv. Sylvan Park	10 41
38.8	Lv. Council Grove	10 34
40.8	Lv. Haucke	10 02
45.5	Lv. Dunlap	9 51
52.9	Lv. Americus	9 34
66.2	Lv. Wayman	
69.9	Lv. Neosho River	
61.6	Lv. Emporia	9 15
67.9	Lv. Cottonwood River	
68.0	Lv. Wyckoff	8 54
71.7	Lv. Blue	
75.0	Lv. Hartford	8 40
81.3	Lv. Strawn	8 29
88.0	Lv. Burlington	8 16
93.2	Lv. Bristol	8 05
95.9	Lv. Throck	
97.9	Lv. Richey	7 55
101.6	Lv. Moody	7 47
107.0	Lv. Neosho Falls	7 36
112.6	Lv. Piqua	7 24
121.7	Lv. Humboldt	7 04
126.3	Lv. Petrolia	6 54
130.9	Lv. Chanute	6 43
134.7	Lv. Austin	
139.9	Lv. Urbana	6 23
148.3	Lv. Galesburg	6 10
156.8	Ar. PARSONS 1-8.	5 45
	AM	
	Lv. Muskogee	12 55
	Lv. Denton	9 00
	Lv. Dallas	6 00
	Lv. Fort Worth	5 50
	AM	
7 30	543.4	Ar. St. Louis
		PM

MUSKOGEE, TULSA, OKLAHOMA CITY

TABLE 12 Tulsa Division		37 Daily
Mts.		
0.	Lv. MUSKOGEE	6 05
4.9	Lv. Wybank	5 55
11.3	Lv. Tutulabassie	4 42
16.4	Lv. Porter	4 30
20.6	Lv. Red Bird	4 24
26.1	Lv. Coweta	4 15
32.8	Lv. Oneta	4 05
37.2	Lv. Broken Arrow	4 05
42.1	Lv. Atsuma	4 45
51.3	Ar. TULSA	4 30
59.3	Lv. Sand Springs	4 05
63.1	Lv. Woktwa	3 53
68.1	Lv. Appalachtia	3 53
77.4	Lv. Prus	3 38
84.9	Lv. Osage 10.	3 25
	Lv. Osage	3 20
	Lv. Vale	3 17
	Lv. Cushing	3 07
	Ar. Oklahoma City	12 30

JOPLIN AND PARSONS

TABLE 13 Joplin Division		35 Daily Motor
Mts.		
0.	Lv. JOPLIN	2 35
3.3	Lv. Chitwood	2 26
7.1	Lv. Fall City	2 16
8.6	Lv. Galena	2 03
11.8	Lv. Playter	
14.5	Lv. Spring River	
16.5	Lv. Quaker	1 43
21.6	Lv. Columbus	1 29
24.4	Lv. Fleming	
27.7	Lv. Cokedale	
30.7	Lv. West Mineral	1 04
36.1	Lv. Star Valley	
38.5	Lv. Sherman City	12 45
40.0	Lv. Dickson	
42.6	Lv. Neosho River	
46.2	Lv. Montana	
54.1	Lv. Shanon	12 25
	Ar. PARSONS 1-8.	12 10
	Lv. Paola	9 25
	Ar. Kansas City	8 30

N. MCALESTER AND WILBURTON

TABLE 14 Wilburton Branch		52 Mixed Tue. Thur. Sat.
Mts.		
1.8	Lv. N. McAlester	8 00
5.7	Lv. Krebs	7 45
11.0	Lv. Carbon	7 25
20.7	Lv. Drumb	6 50
26.1	Lv. Patterson	6 25
32.1	Ar. Wilburton	6 00

MORAN AND IOLA

TABLE 15 Iola Branch		60 Mixed Daily Ex-Sun
Mts. from Kan. City		
11.0	Lv. MORAN	2 30
11.3	Lv. La Harpe	2 01
103.7	Lv. Gas	1 50
107.1	Ar. IOLA	1 00

1939 CALENDAR 1939

FEBRUARY			MARCH			APRIL			MAY			JUNE			JULY			AUGUST			SEPTEMBER			OCTOBER			NOVEMBER			DECEMBER																															
S	M	T	W	T	F	S	M	T	W	T	F	S	M	T	W	T	F	S	M	T	W	T	F	S	M	T	W	T	F	S	M	T	W	T	F	S	M	T	W	T	F	S	M	T	W	T	F														
1	2	3	4	5	6	7	8	9	10	11	12	13	14	15	16	17	18	19	20	21	22	23	24	25	26	27	28	29	30	31	1	2	3	4	5	6	7	8	9	10	11	12	13	14	15	16	17	18	19	20	21	22	23	24	25	26	27	28	29	30	31

NOTICE

Trains do not stop where no time is shown.

Bold face figures immediately following stations refer to tables showing time of branch line trains which connect at such points.

REFERENCE NOTES FOR PAGE 16

① Stops on Signal only for revenue passengers.

② Pullman cars ready for occupancy at 9:30 P.M.

③ Union Station—Used by all lines.

④ Between Houston and Galveston tickets reading via any rail line will be honored on trains of any other rail line—See Table 24; M-K-T tickets are also honored by Texas Bus Lines, Inc.

For equipment of trains, see page 5.



Stopover Privileges

Upon notice to conductors, stopovers within final limit of tickets may be had at any M-K-T station, where trains regularly stop, on all one-way tickets with 30-day limit; also on round trip tickets, good in sleeping cars, with 30-day and 6-month limit; on round trip 30-day limit tickets good in coaches; also on Summer Tourist, Winter Tourist and All-Year Tourist tickets.

When you purchase your ticket, specify the stopovers you desire.

HENRIETTA DIVISION

33 Daily	Miles from St. Louis	TABLE 16	38 Daily
PM 5 30	0	Lv. ST. LOUIS	Ar 11 45
① 9 10	680.9	Lv. Kansas City	Ar 7 15
9 30	680.9	Lv. Denison 6-7	Ar 8 35
8 30		Lv. Fort Worth 7	Ar 10 00
10 30	685.7	Lv. Whitesboro	Ar 7 30
10 41	693.1	Lv. Woodbine	Ar 7 18
10 55	701.1	Lv. Gainesville	Ar 7 05
11 06	706.5	Lv. Lindsay	Ar 6 51
11 16	712.4	Lv. Myra	Ar 6 42
11 24	716.3	Lv. Muenster	Ar 6 35
11 26	722.5	Lv. Coppers	Ar 6 25
11 41	728.3	Lv. St. Jo	Ar 6 20
11 54	733.8	Lv. Bonita	Ar 6 08
12 10	742.3	Lv. Nocona	Ar 6 04
12 22	749.1	Lv. Belcher ville	Ar 5 58
12 35	755.2	Lv. Bingsold	Ar 5 52
12 45	765.3	Lv. Walton	Ar 5 18
1 00	771.7	Lv. Henrietta	Ar 5 08
1 15	781.5	Lv. Jolly	Ar 4 54
1 30	790.2	Ar. WICHITA FALLS	Ar 4 40

DALLAS AND DENTON

47 1/2 Daily	Miles	TABLE 16-A	47 Daily
Freight Only	0	Lv. M-K-T DALLAS	Ar
	8.1	Lv. Freight Yard	
	12.2	Lv. Rosejawn	
	14.5	Lv. Farmers Branch	
	16.4	Lv. Carrollton	
	22.5	Lv. Trinity Mills	
	28.2	Lv. Lewisville	
	37.5	Lv. Lake Dallas	
		Ar. Denton 7	

SAN MARCOS AND SMITHVILLE

52 Mixed Daily Ex. Sun.	Miles	TABLE 17	53 Mixed Daily Ex. Sat.
		San Marcos Division	
AM 5 34	0	Lv. SAN MARCOS 8	Ar 12 40
5 06	5.5	Lv. Reedville	Ar 11 59
5 20	8.8	Lv. Maxwell	Ar 11 45
7 05	12.8	Lv. Larremore	Ar 11 20
7 31	16.9	Lv. Lockhart	Ar 11 20
7 57	23.9	Lv. Dale	Ar 10 45
8 01	29.8	Lv. Bateman	Ar
8 20	32.0	Lv. Red Rock	Ar 10 25
8 35	48.1	Lv. Jordan	Ar 10 13
8 50	42.1	Lv. Rosanky	Ar 9 55
9 10	47.1	Lv. Togo	Ar 9 45
9 15	52.6	Lv. SMITHVILLE 8	Ar 9 30
9 15	52.6	Lv.	Ar 9 15
9 45	71.5	Lv. La Grange	Ar 2 44
4 55	118.7	Lv. Sealy	Ar 1 33
6 15	167.3	Ar. HOUSTON	Ar 12 15

HOUSTON AND GALVESTON

①-GN 21 Daily	Katy 26 Daily	Miles from St. Louis	TABLE 18	①-GN 22 Daily	Katy 26 Daily
			(See also Table 24, page 17 and Note @ above)		
PM 1 10	AM 8 05	1084.1	Lv. HOUSTON 8	AM 9 30	PM 9 30
		1085.2	Lv. M-K-T Sta.	Ar 11 59	
		1090.1	Lv. Union Sta.	Ar 11 38	
		1094.8	Lv. Harrisburg	Ar 11 30	
		1098.5	Lv. Dumont	Ar 11 25	
		1105.9	Lv. Genoa	Ar 11 12	
		1108.5	Lv. Webster	Ar 11 08	
		1112.9	Lv. League City	Ar 11 02	
		1120.4	Lv. Dickinson	Ar 10 53	
		1122.9	Lv. La Marque	Ar 10 50	
		1133.5	Lv. Texas City Jct.	Ar 10 30	
			Ar. GALVESTON	Ar 10 30	

WICHITA FALLS AND FORGAN

54 Daily	Miles	TABLE 19	53 Daily
AM 6 30	0	(M-K-T R. R. of Tex.)	PM 4 15
6 45	6.7	Lv. WICHITA FALLS	Ar 3 55
7 03	13.9	Lv. Bacon	Ar 3 40
		Lv. Burk Burnett, Tex.	
		M-K-T R. R.	
		Red River	
7 18	21.0	Lv. Devol, Okla.	Ar 3 24
7 31	27.1	Lv. Grandfield	Ar 3 10
7 45	34.3	Lv. Loveland	Ar 2 55
8 00	40.9	Lv. Hollister	Ar 2 41
8 20	50.6	Lv. Fredertek	Ar 2 15
		Lv. Burt	
8 46	62.5	Lv. Tipton	Ar 1 47
8 58	69.1	Lv. Humphreys	Ar 1 35
9 15	77.3	Lv. Altus 20	Ar 1 20
9 38	84.7	Lv. Martha	Ar 12 53
9 50	90.6	Lv. Hester	Ar 12 41
10 08	96.7	Lv. Mangum	Ar 12 28
10 26	106.6	Lv. Brinkman	Ar 12 10
10 32	109.5	Lv. Willow	Ar 12 04
10 41	114.2	Lv. Moravia	Ar 11 55
10 57	121.2	Lv. Carter	Ar 11 39
11 18	130.4	Lv. Hocker	Ar 11 18
11 30	137.0	Ar. Elk City	Ar 11 05
11 45	137.0	Lv. Hampton	Ar 10 50
11 59	146.4	Lv. Carpenter	Ar 10 31
12 13	154.0	Lv. Washita River	Ar 10 17
		Moorewood	
12 31	163.6	Lv. Leedy	Ar 9 59
12 59	172.8	Lv. Trail	Ar 9 40
1 08	182.4	Lv. So. Canadian River	Ar 9 22
		Camargo	
1 19	188.5	Lv. Vict.	Ar 9 11
2 40	197.0	Lv. Sharon	Ar 8 50
2 01	207.7	Lv. Woodward	Ar 8 29
2 30	221.0	Lv. Kline	Ar 8 00
2 48	227.4	Lv. Scott	Ar 7 36
3 08	236.4	Lv. Supply	Ar 7 19
3 20	242.4	Lv. Dunlap	Ar 7 07
3 32	247.1	Lv. May	Ar 6 57
3 52	257.2	Lv. Laverne	Ar 6 36
4 06	264.8	Lv. Rosston	Ar 6 18
4 22	272.3	Lv. Gate	Ar 6 02
4 46	283.2	Lv. Knowles	Ar 5 42
5 08	293.9	Lv. Mokane	Ar 5 22
5 30	305.1	Ar. FOEGAN	Ar 5 00

ALTUS AND WELLINGTON

58 Mixed Daily Ex. Su.	Miles	TABLE 20	57 Mixed Daily Ex. Su.
		(M-K-T R. R. of Tex.)	
AM 6 30		Lv. WICHITA FALLS	PM
		(M-K-T R. R.)	
9 25	0	Lv. ALTUS 19	Ar 4 50
9 47	7.2	Lv. Victory	Ar 4 25
10 15	14.9	Lv. Duke	Ar 4 00
10 38	22.4	Lv. McQueen	Ar 3 35
10 55	26.9	Lv. Gould	Ar 3 20
11 35	35.1	Lv. Hollis, Okla.	Ar 2 50
		(M-K-T R. R. of Tex.)	
12 05	44.0	Lv. Dodson, Tex.	Ar 2 10
12 25	50.3	Lv. Kessler	Ar 1 50
12 45	57.1	Ar. WELLINGTON	Ar 1 30

TEMPLE AND BELTON

55 Mixed Daily Ex. Sun.	Miles from St. Louis	TABLE 21	54 Mixed Daily Ex. Sun.
		Belton Branch	
PM 2 30	880.0	Lv. TEMPLE 8	Ar 9 40
2 45		Lv. Echo	Ar 9 30
3 15	890.1	Ar. BELTON	Ar 9 00

TABLE 19-A

BEAVER, MEADE, AND ENGLEWOOD RAILROAD COMPANY

General Offices—
 Railway Exchange Bldg., St. Louis
 M. S. SLOAN, President, St. Louis, Mo.
 GEO. T. ATKINS, Executive Vice-Pres., St. Louis, Mo.
 F. W. GRACE, Vice-President and General Manager, Dallas, Tex.
 J. F. GARVIN, Vice-President—Traffic, St. Louis, Mo.
 R. C. TROVILLON, Freight Traffic Manager, St. Louis, Mo.

No. 1	Miles	(Central Time)	No. 2
	0	Lv. Beaver	Ar
	7.0	Lv. Forgan	Ar
	17.3	Lv. Floris	Ar
	26.7	Lv. Turpin	Ar
	34.5	Lv. Baker	Ar
	45.2	Lv. Hooker	Ar
	58.4	Lv. Mouser	Ar
	65.4	Lv. Hough	Ar
	71.2	Lv. Hovey	Ar
	77.1	Lv. Muncy	Ar
	85.4	Lv. Eva	Ar
	90.3	Lv. Doolin	Ar
	95.5	Lv. Hopkins	Ar
	99.5	Lv. Burton	Ar
	105.0	Lv. Keyes	Ar

CONNECTIONS
 With Missouri-Kansas-Texas R. R.
 With Rock Island. With Santa Fe.

DENISON AND SHERMAN

55 Mixed Daily Ex. Su.	Miles from St. Louis	TABLE 22	56 Mixed Daily Ex. Su.
		Sherman Branch	
AM 6 00	680.9	Lv. DENISON 6-7	Ar 2 00
6 25	662.5	Lv. Sun	Ar 1 40
6 40	688.2	Lv. Ellsworth	Ar 1 25
7 05	671.7	Ar. SHERMAN	Ar 1 00

NOTE:—M-K-T Lines tickets are honored between Denison and Sherman on all Texas Electric Ry. trains. Convenient connections at Denison with all M-K-T trains north and south.
 At Denison, Interurban station across street from Katy station.

GREENVILLE AND MINEOLA

51 Mixed Mon. Wd. Fri.	Miles from St. Louis	TABLE 23	52 Mixed Tue. Thur. Sat.
		Mineola Division	
AM 4 42		Lv. Denison	Ar 6 30
		Lv. Dallas	Ar 10 05
6 30	713.0	Lv. Greenville 7	Ar 1 35
7 10	720.3	Lv. Dixon	Ar 12 15
7 50	727.5	Lv. Lone Oak	Ar 12 10
8 30	733.5	Lv. Point	Ar 11 35
9 15	740.9	Lv. Emory	Ar 10 55
	744.0	Lv. GINGER	Ar
	747.3	Lv. Clearing	Ar
10 20	750.4	Lv. Alba	Ar 10 00
10 35	750.9	Lv. Hoyt	Ar 9 50
11 05	758.5	Lv. Golden	Ar 9 20
11 35	761.4	Lv. Storage	Ar 8 45
11 50	763.5	Ar. MINEOLA	Ar 8 30

HOUSTON AND GALVESTON SERVICE

Between Houston and Galveston, tickets reading via any rail line will be honored on trains of any other rail line; M-K-T tickets are also honored by Texas Bus Lines, Inc.

TABLE 24	S. Fe	S. P.	M-K-T	M. P.	S. Fe	TEXAS BUS LINES, Inc.
Lv Houston....	7 50	8 05	8 05	1 10	6 15	Leave on the hour, except none at 11:00 am, 1:00 pm, 3:00 pm, 7:00 pm or 9:00 pm.
Ar Galveston...	9 15	9 45	9 45	2 40	7 45	
	S. Fe	M. P.	S. P.	S. Fe	M-K-T	
Lv Galveston...	7 30	10 30	7 10	7 45	8 00	
Ar Houston....	9 05	11 59	8 50	9 15	9 30	

WACO AND ROTAN

Reference Notes for Page 17	35 Motor Daily	Mls.	TABLE 25	36 Motor Daily
	11 00		Lv. Dallas..... Ar	7 40
	11 00		Lv. San Antonio... Ar	9 00
	6 20	0	Lv. WACO 6-7-8	10 10
	6 50	13.0	Lv. Ross.....	9 43
	6 58	16.4	Lv. Wiggins.....	9 35
	7 13	23.7	Lv. Aquilla.....	9 21
	7 33	33.9	Lv. Whitney.....	9 02
		39.8	Brazos River	
	9 43	40.4	Lv. Nela.....	8 50
	7 53	45.2	Lv. Steiner.....	8 40
	8 09	54.0	Lv. Morgan.....	8 24
	8 27	63.4	Lv. Walnut Springs	8 05
	8 47	73.4	Lv. Iredell.....	7 44
	9 07	84.6	Lv. Rleo.....	7 25
	9 20	91.9	Lv. Chalrette.....	7 09
	9 30	97.1	Lv. Alexander.....	6 59
	9 50	105.9	Lv. Dublin.....	6 40
	10 05	114.1	Lv. Comy.....	6 23
		116.5	Leon River	
	10 15	119.1	Lv. De Leon 26	6 15
	10 30	124.6	Lv. Rucker.....	6 07
	10 40	130.0	Lv. Gorman.....	5 48
	11 00	140.3	Lv. Carbo.....	5 28
	11 10	144.2	Lv. Mangum.....	5 18
	11 20	154.7	Lv. Cisco.....	5 00
	11 50	154.7	Lv. Pueblo.....	4 13
	12 15	167.5	Lv. Moran.....	4 04
	12 25	172.2	Lv. Sedwick.....	3 53
	12 35	177.4	Lv. Albany.....	3 33
	12 55	188.1	Lv. Acampo.....	3 11
	1 16	192.5	Lv. Bud Matthews	3 03
	1 24	203.3	Lv. Lueders.....	2 44
	1 42	212.3	Lv. Avoca.....	2 32
	1 53	219.3	Lv. Stamford.....	2 20
	2 10	226.3	Lv. Tuxedo.....	
		228.3	Lv. Hamlin.....	
	4 30	246.3	Lv. Plasterco Jct.	
	5 10	250.5	Lv. Royston.....	
	5 55	257.8	Lv. North Roby	
	6 50	263.0	Lv. ROTAN	
	7 15	268.8		
	7 45			

DE LEON AND CROSS PLAINS

61 Mixed Mon. Wed. Fri.	Mls. from Waco	TABLE 26	60 Mixed Mon. Wed. Fri.
		Cross Plains Branch	
9 15	119.1	Lv. DE LEON 25... Ar	4 00
9 55	128.8	Lv. Duster.....	3 15
10 25	135.4	Lv. Slpe Springs...	2 45
11 20	146.7	Lv. Rising Star...	1 55
11 50	154.8	Lv. Pioneer.....	1 20
12 15	159.4	Ar. CROSS PLAINS	1 00

AMERICAN EXPRESS TRAVELERS CHEQUES

may now be purchased at our larger ticket offices. Travelers Cheques are spendable in dining cars, at hotels, stores or other places where you would use cash.

Tourate Telegrams

Will be accepted at stations on Katy Lines to any destination in the United States where there is a Western Union office. Sender's own expression within the prescribed limitations as to subjects. Words in excess of 15, relating to conditions of the trip, will be charged for at the regular additional word rate. Remember that your family and your friends at home and elsewhere are following your trip with interest. Keep them informed by inexpensive daily TOURATE TELEGRAMS.

Katy Table d' Hote Meals!



Interior—one of Katy's newest air-conditioned dining cars

(Sample Menu)
Katy SPECIAL DINNER \$1.25

(With Sirloin Steak \$1.65)

- Assorted Olives
- Fresh Gulf Shrimp Cocktail
- or
- Katy Special Onion Soup
- Chicken Gumbo, Louisiana
- Broiled Trout, Maitre d'Hotel
- Fried Milk Fed Chicken, Country Style
- Grilled Baby Lamb Chops, Sweet Relish
- Omelette, Spanish Style
- Cold Assorted Meats, Potato Salad
- Browned New Potatoes
- Bartlett Pear au Fromage
- Head Lettuce, Thousand Island
- Hot Tea Biscuits
- Chilled Melon
- Chocolate Parfait
- Cheese with Toasted Crackers
- Assorted Dinner Breads
- Fresh Baked Pie
- Coffee
- Tea
- Milk

"Nothing Finer..."
... say patrons in praise of Katy's special-ly priced meals. Enter the Katy air-conditioned dining car — try one of Katy's famous "Tab" meals—and learn for yourself how much is added to the satisfaction of your journey!

CONNECTIONS AT ST. LOUIS UNION STATION

Alton	Lv St. Louis	8 58 AM	12 25 PM	2 48 PM	4 30 PM	11 48 PM	12 30 AM
	Ar Springfield	10 46 AM	2 25 PM	4 55 PM	6 18 PM	2 03 AM	
	Ar Chicago	1 53 PM	5 55 PM	9 05 PM	9 26 PM	6 30 AM	7 46 AM
Baltimore & Ohio	Lv St. Louis	9 30 AM	12 50 PM	11 28 PM			
	Ar Louisville	5 45 PM	9 15 PM	7 00 AM			
	Ar Cincinnati (E.T.)	8 17 PM	11 57 PM	8 05 AM			
Big Four Route	Ar Terre Haute	1 40 PM	4 46 PM	10 45 PM	4 15 AM		
	Ar Cleveland (E.T.)	8 15 PM	11 30 PM	6 35 AM		11 45 AM	
	Ar Buffalo	11 59 PM	2 55 AM	9 23 AM		4 45 PM	
Big Four C. & O.	Lv St. Louis	9 10 AM	12 00 PM				
	Ar Cincinnati	8 35 AM	11 10 PM				
	Ar Washington, D.C.	8 20 AM	12 45 PM				
Burlington Route	Lv St. Louis	11 46 PM	2 00 PM				
	Ar Burlington	5 45 PM	8 59 AM				
	Ar Minneapolis	6 26 PM	7 50 AM				
C. & E. I.	Lv St. Louis	12 37 PM	12 00 M	NT			
	Ar Danville	4 39 PM	8 20 PM				
	Ar Chicago	5 32 PM	6 55 AM				
Illinois Central	Lv St. Louis	8 55 AM	12 20 PM	12 05 AM			
	Ar Springfield	10 47 AM	2 25 PM	2 40 AM			
	Ar Chicago	1 50 PM	5 50 PM	7 30 AM			
Illinois Central Cent. of Ga. A. C. L.	Lv St. Louis	11 30 PM					
	Ar Birmingham	4 35 PM	8 20 PM				
	Ar Jacksonville	8 30 AM					
L. & N.	Lv St. Louis	8 15 AM	4 00 PM	10 50 PM	9 35 PM	11 00 AM	
	Ar Evansville	12 45 PM	8 20 PM	2 45 AM	3 15 AM	2 55 PM	
	Ar Nashville	2 05 PM	4 55 PM	4 00 AM	7 05 AM		
M. & O.	Ar Knoxville	5 40 PM	1 05 AM	10 25 AM	7 35 AM	6 22 PM	
	Ar Chattanooga	5 40 PM	4 50 AM	2 20 PM	2 20 PM	9 42 PM	
	Ar Birmingham	5 30 AM	7 30 AM	2 55 PM	6 00 AM		
Nickel Plate Road	Ar Knoxville	1 25 AM	8 20 AM	6 50 PM	8 50 PM	10 20 PM	
	Ar Marion	2 25 AM	9 30 AM	6 50 PM	8 50 PM	10 20 PM	
	Ar Columbus	4 55 AM	10 35 PM	6 50 PM	8 50 PM	10 20 PM	
Penna. Railroad	Ar Harrisburg	3 59 AM	6 25 AM	12 50 PM	1 19 PM	2 12 AM	
	Ar Baltimore	6 66 AM	9 05 AM	4 08 PM	4 09 PM		
	Ar Washington	7 50 AM	9 55 AM	4 55 PM	4 55 PM		
Frisco	Lv St. Louis	11 30 PM	8 45 AM				
	Ar Memphis	7 15 AM	5 55 PM				
	Ar Jacksonville	5 30 AM	9 15 AM				
Southern Railway	Ar Knoxville	5 45 AM	4 00 PM				
	Ar Chattanooga (C.T.)	9 45 AM	8 15 PM				
	Ar Atlanta (C.T.)	8 45 PM	6 59 AM				
Wabash	Lv St. Louis	8 50 AM	12 00 PM	11 55 PM			
	Ar Decatur	10 47 AM	2 18 PM	2 50 AM			
	Ar Chicago	1 45 PM	6 30 PM	7 20 AM			

Illinois Terminal Railroad System
 Station: 710 N. 12th Blvd.
 For Springfield, Peoria, Bloomington, Decatur, Champaign, Danville and to Intermediate Points - Leave St. Louis daily at 4:10 a. m., 8:40 a. m., 1:10 p. m., 4:30 p. m., 5:35 p. m., 6:45 p. m., and 12:05 a. m.

CONNECTIONS AT KANSAS CITY UNION STATION

Alton	Ar Kansas City	16 55 AM	11 45 PM				
	Ar Mexico	11 45 AM	9 00 AM				
	Ar Chicago	19 05 PM	11 45 AM				
Burlington Route	Ar Lincoln	2 00 AM	12 15 PM				
	Ar Billings	10 40 AM	10 40 PM				
	Ar Spokane	6 10 PM	9 30 PM				
C. G. W.	Ar St. Joseph	6 55 PM	1 20 AM				
	Ar Des Moines	10 55 PM	6 30 AM				
	Ar Rochester	7 00 AM	7 30 PM				
The Milwaukee Road	Ar Cedar Rapids	16 55 PM					
	Ar Davenport	17 30 PM	2 55 AM				
	Ar Chicago		8 15 AM				
C. R. I. & P.	Ar Kansas City	9 45 AM	8 10 PM	1 35 PM	11 10 PM	8 00 AM	
	Ar Topeka	11 10 AM	9 50 AM	3 00 PM	12 35 AM	9 08 AM	
	Ar Denver	6 20 AM	11 45 AM				
Missouri Pacific	Ar Kansas City	11 35 PM	9 00 PM	7 46 PM			
	Ar Davenport	8 45 AM	3 47 AM				
	Ar Rock Island	8 55 AM	4 45 AM	4 00 AM			
Santa Fe *Bus Service	Ar Pueblo	7 50 AM	10 40 AM	4 46 AM			
	Ar Colorado Spgs.	10 40 AM	12 50 PM	6 10 AM			
	Ar Denver	8 15 AM	12 50 PM	8 15 AM			
Union Pacific	Ar Kansas City	11 00 PM	9 30 AM	12 47 AM	1 55 PM	10 15 PM	12 27 AM
	Ar Topeka	11 05 AM	9 30 AM	7 37 AM	3 25 PM	10 15 PM	10 00 AM
	Ar La Junta	9 20 PM	7 50 AM	3 05 AM	4 46 AM		
Wabash	Ar Kansas City	8 30 AM	8 30 AM	8 45 PM	9 00 PM		
	Ar Los Angeles	8 15 PM	8 30 AM	19 00 AM	12 05 PM	11 50 AM	19 00 AM
	Ar San Francisco	6 30 AM	8 15 PM	9 15 PM	9 15 PM		

*Does not make connection for Chicago leaving Kansas City Saturday night.

Chicago Transfer: Passengers from Nashville may leave St. Louis at 9:35 P. M. in thru coach for Nashville.

CONNECTIONS AT SAN ANTONIO

Southern Pacific	Ar San Antonio	3 05 PM	3 15 AM				
	Ar Eagle Pass	9 15 PM	10 25 PM				
	Ar El Paso (M.T.)	8 20 AM	7 20 PM				
I.-G. N.	Ar San Antonio	8 30 AM	4 45 PM				
	Ar Laredo	1 15 PM	8 50 PM				
	Ar San Antonio	10 00 PM	8 00 AM				

*Bus from Del Rio. Also train from Spoford arrives Eagle Pass 8:15 A.M.

Through Pullman Service between St. Louis and Brownsville on Texas Special—see Page 5.

Unless otherwise indicated, trains operate daily. †Daily Ex. Sun. ‡Extra Fare.

MISCELLANEOUS CONNECTIONS

CISCO			
T. & P.	Lv Cisco (West)	1 50 AM	11 45 AM
	Lv Cisco (East)	4 16 AM	4 54 PM
DALLAS (Union Station)			
B.-R. I. (Berlingham- Rush Island)	Lv Dallas	8 15 AM	8 00 PM
	As Teague	9 55 AM	6 41 PM
	As Houston	12 16 PM	9 00 PM
	Lv Dallas	6 00 PM	8 00 AM
	As Mt. Pleasant	9 23 PM	11 17 AM
	As Texarkana	11 05 PM	12 45 PM
	As Memphis	7 09 AM	9 00 PM
St. L. S. W. of Texas	Lv Dallas	8 50 AM	6 00 PM
	As Mineola	11 11 AM	7 43 PM
	As Marshall	12 55 PM	9 30 PM
	As New Orleans	7 59 AM	4 25 PM
	Lv Dallas	8 00 AM	5 00 PM
	As Meria	10 09 AM	1 50 AM
	As Houston	2 00 PM	9 25 PM
	Lv Dallas	8 00 PM	6 30 AM
	As Beaumont	8 45 AM	
	Lv Dallas	8 30 AM	9 15 PM
	As Fort Worth	9 25 AM	10 12 PM
ELK CITY			
C.R.I. & P.	Lv Elk City-e	1 43 AM	12 49 PM
	Lv Elk City-w	3 03 AM	5 24 PM
FORT WORTH			
C.R.I. & G.	Lv Fort Worth	10 40 PM	
	As Jackboro	3 45 AM	
	As Graham	6 00 AM	
F.W. & D.C.	Lv Fort Worth	9 45 AM	10 35 PM
	As Wichita Falls	12 50 PM	1 23 AM
C. C. & S. F.	Lv Fort Worth-d	8 00 AM	11 10 PM
	Lv Fort Worth-e	8 00 AM	11 00 PM
	Lv Fort Worth	8 30 AM	10 20 PM
	As Weatherford	9 20 AM	2 37 PM
	As Ranger	11 10 AM	4 25 PM
	As El Paso (M. T.)		6 30 AM

HOUSTON			
Southern Pacific	Lv Houston-w	9 20 AM	11 40 PM
	Lv Houston	8 05 AM	9 40 PM
	As Beaumont	10 15 AM	11 40 PM
	As New Orleans	6 40 PM	7 35 AM
	Lv Houston	5 15 PM	
	As Yoakum	9 20 PM	
	Lv Houston		9 40 PM
	As Corpus Christi		5 00 AM
	As Brownsville		9 10 AM
	Lv Houston	7 45 AM	
Gulf Coast Lines	Lv Houston	10 03 AM	1 45 PM
	As New Orleans	6 25 PM	7 45 AM
	Lv Houston	9 00 AM	9 20 PM
	As Corpus Christi	3 25 PM	4 05 AM
	As Harlingen	7 25 PM	6 50 AM
	As Brownsville	8 15 PM	7 55 AM

McALESTER (Joint Station)			
Rock Island	Lv McAlester-w	9 00 AM	6 35 PM
	Lv McAlester-e		8 50 PM

WICHITA FALLS (Joint Station)			
F. W. & D. C.	Lv Wichita Falls	1 05 PM	1 38 PM
	As Childress	3 45 PM	4 25 AM
	As Amarillo	6 55 PM	7 35 AM
	As Pueblo	4 40 AM	5 00 PM
	As Colo. Springs	5 50 AM	6 15 PM
	As Denver	7 55 AM	8 15 PM
W. V. Ry.	Lv Wichita Falls	5 15 PM	
	As Abilene	11 00 PM	

*Daily. †Daily except Sunday. ‡Northbound. §Southbound.
 e Eastbound. w Westbound. ¶Transfer necessary from or to M.-K.-T. Station.

INFORMATION FOR PASSENGERS

TIME—Central time is used throughout this folder. A. M. time is shown in light faced figures and P. M. time in dark faced figures.

NOT RESPONSIBLE—No responsibility is assumed for errors in time tables, inconvenience or damage resulting from delayed trains or failure to make connections. Schedules herein are subject to change without notice.

STOPPING TRAINS ON SIGNALS—Where trains are scheduled to stop only on signal, advance notice should be given in all cases, so that necessary arrangements may be perfected.

TICKETS ON LIMITED TRAINS—Passengers holding tickets to or desiring stopover privileges at stations where fast or limited trains are not scheduled to stop, will be carried on such trains only to first regular station stop short of destination, or stop-over point, where passenger will leave the train and from there take the first local train.

No agent or conductor has a right to change or vary these rules and regulations.

EXTRA TRAIN STOPS FOR ACCOMMODATION OF PASSENGERS.

SOUTHBOUND—In Texas trains 3 and 23 will stop at any station to discharge revenue passengers (including drovers' tickets) from or via Kansas City; trains 5 and 25 will also stop at any station to discharge revenue passengers from Kansas City or from stations St. Louis, Mo. to South Mound, Kan., inclusive.

NORTHBOUND—In Texas and Oklahoma trains 6 and 26 will stop at any station to take on revenue passengers to Kansas City and beyond and to points South Mound, Kan. to St. Louis, Mo., inclusive.

BUY TICKETS before boarding trains and avoid payment of train charges.

PERSONS DESIRING COUPON TICKETS at stations where they are not regularly on sale can obtain them by giving Ticket Agent sufficient notice.

CHILDREN under five years of age free, when accompanied by parent or guardian; five years of age and under twelve, one-half fare; twelve years of age or over, full fare. Where a child under five (5) years of age accompanied by parent or guardian occupies exclusively a berth or seat in sleeping car, in section other than that occupied by parent or guardian, half fare full ticket will be collected in addition to the Pullman rate.

ADJUSTMENT OF FARES—In cases of dispute with conductors or agents, pay the fare required, take receipt and communicate with Passenger Traffic Office, St. Louis, Mo. or Dallas, Texas.

TICKETS MUST BE USED WITHIN LIMIT—Tickets will be honored for passage to reach destination prior to midnight of date indicated thereon, except when otherwise specified on tickets.

AIR-CONDITIONED TRAINS: Air-conditioned equipment has been assigned to regular sections of trains as shown herein. Every effort will be made to provide it as specified, but the right is reserved to employ non-air-conditioned cars as necessitated by volume of traffic or emergencies.

STOPOVER PRIVILEGES—Stoppers are permitted generally at all points on the M.-K.-T. Lines within final limit of ticket on notice to train conductors.

REDEMPTION OF TICKETS—Tickets unused, or partly used, will be redeemed, under tariff regulations at proper value.

BAGGAGE RESTRICTIONS:

1. Passengers are hereby notified the railroad reserves the right to carry their baggage in trains ahead or following.

2. No baggage or other property will be checked unless passenger makes, on form provided, a written declaration of the value of such baggage or other property, whether or not such valuation is within the free allowance. Exception: On movements wholly within the State of Texas this declaration is not compulsory.

3. 150 pounds of baggage checked free on each adult full fare ticket, except when otherwise specified in tariff under which ticket is sold. All free allowances are subject to tariff stipulations as to contents, weight, value and size. Excess value must be declared at time of checking. A charge of only 10¢ is made for each \$100.00 declared valuation, or fraction thereof, in excess of free allowance.

4. No piece of baggage exceeding 300 pounds in weight or 72 inches in greatest dimension, or single shipment exceeding \$2500.00 in value will be checked.

5. Passengers desiring baggage delivered to them at Highland Park, at non-agency stations or stations where agents are not on duty at train time, will please confer with conductor before arrival at destination.

MARK YOUR BAGGAGE—All baggage should show name and permanent address of owner.

HAND BAGGAGE—Hand baggage and other property (not under check) but carried by passenger or other representative on station premises or into passenger cars, must be protected and cared for by the passenger or representative. The Railroad will not assume responsibility for any loss or damage.

DOGS AND OTHER SMALL HOUSEHOLD PETS—Guns and bicycles (not motorcycles) are transported in baggage cars subject to tariff regulations.

AUTOMOBILES—SHIPPED ON PASSENGER TICKETS—Private automobiles may be shipped to and from practically every point in the United States located on rail lines at much lower rates than regular freight service. Ask Katy Agent for full particulars. Stations on Katy Lines equipped with facilities for handling automobiles are indicated by asterisk (*) on page 2.

LOST ARTICLES—To be inquired for by addressing Baggage Department, Dallas, Texas. No responsibility is assumed for unchecked articles left in stations or cars.

PARCEL ROOM—Parcel Rooms or Locker Boxes will be found at the principal stations where packages, hand-baggage, etc., may be checked.

TELEGRAPH SERVICE—For the convenience of our passengers, Western Union Telegraph service is available from many stations.

WHEEL (revaled) CHAIRS for the convenience of those needing them, may be had at St. Louis, Kansas City, Parsons, Muskogee, McAlester, Denison, Dallas, Fort Worth, Waco, San Antonio, Houston, Olveston and Wichita Falls.

Free

PICK-UP and DELIVERY of L. C. L. Freight

FREE PICK-UP of LCL freight TO any point in the U. S.	FREE DELIVERY of LCL freight FROM any point in the U. S.	To Your DOOR!
--	---	------------------

TO SHIP ANYTHING ANYWHERE, JUST PHONE ANY KATY AGENT.

ONE WAY RAIL AND PULLMAN FARES

The rates shown herein are for general information only and subject to change without notice.

BETWEEN AND	Austin, Tex.			Dallas, Tex.			Fort Worth, Tex.			Houston, Tex.			Kansas City, Mo.			Oklahoma City, Okla.			St. Louis, Mo.			San Antonio, Tex.			Waco, Tex.			Wichita Falls, Tex.				
	In Coaches	In Pullmans	Lower Berth	In Coaches	In Pullmans	Lower Berth	In Coaches	In Pullmans	Lower Berth	In Coaches	In Pullmans	Lower Berth	In Coaches	In Pullmans	Lower Berth	In Coaches	In Pullmans	Lower Berth	In Coaches	In Pullmans	Lower Berth	In Coaches	In Pullmans	Lower Berth	In Coaches	In Pullmans	Lower Berth	In Coaches	In Pullmans	Lower Berth		
Austin, Tex.	4.20	6.27	2.68	3.97	5.93	2.65	12.13	18.17	...	13.87	20.78	6.05	8.08	12.08	3.95	16.91	26.36	7.35	1.60	2.40	...	2.20	3.20	...	6.26	9.36	2.90		
Bartlesville, Okla.	11.87	17.47	...	7.47	11.20	...	7.72	11.56	...	12.13	18.17	...	3.95	5.92	2.65	2.92	4.39	2.10	8.13	12.18	3.15	13.26	19.86	...	5.47	14.19	...	6.05	12.12	4.75		
Boonville, Mo.	15.28	22.88	6.05	11.08	16.61	4.50	11.33	16.98	4.50	15.74	23.59	6.30	8.04	12.05	2.15	8.04	12.05	2.15	16.83	25.38	6.85	13.12	19.68	...	6.25	11.99	17.97	4.75		
Brownsville, Tex.	7.28	10.92	2.90	11.48	17.20	4.75	11.25	16.86	5.25	7.44	11.15	...	21.15	31.71	8.95	15.36	23.01	5.80	23.78	35.65	9.45	5.68	8.52	...	8.43	14.21	...	13.54	20.25	...		
Chicago, Ill.	22.70	34.03	8.95	19.09	29.63	7.35	19.09	29.63	7.35	22.13	33.17	8.70	16.05	24.06	5.80	24.30	36.43	9.45	20.84	31.23	7.65	19.32	28.97		
Corpus Christi, Tex.	4.59	6.89	2.65	8.79	13.17	3.95	8.56	12.63	3.95	4.70	7.04	...	18.46	27.68	7.10	12.67	18.98	...	21.04	31.54	8.70	2.95	4.49	...	6.79	10.18	...	2.90	10.85	16.26		
Dallas, Tex.	4.20	6.27	2.65	4.88	7.31	2.65	9.90	14.85	4.50	13.35	20.02	5.80	5.80	8.62	...	2.65	2.00	2.99		
Denison, Tex.	5.91	8.83	2.65	2.13	3.19	...	1.94	2.90	8.22	12.31	3.70	3.86	5.77	...	11.66	17.49	5.25	7.51	11.24	...	3.15	3.72	5.56	...	2.40	2.60	3.69	
Denver, Colo.	19.57	29.30	8.40	20.48	30.68	8.40
Durant, Okla.	6.31	9.42	2.90	2.53	3.78	...	2.32	3.49	...	6.75	10.10	3.70	7.82	11.72	3.15	11.28	16.90	6.25	7.90	11.83	...	3.15	4.11	6.16	...	2.65	2.99	4.48	
Edinburg, Tex.	6.51	9.91	2.65	10.81	16.19	4.50	10.58	15.85	4.75	6.79	10.17	...	20.48	30.70	8.95	14.69	22.00	...	23.13	34.67	9.45	5.01	7.51	...	8.81	13.20	...	4.20	12.87	19.28		
El Paso, Tex.	14.46	21.62	4.75	18.86	28.29	7.65	
Fort Scott, Kan.	12.34	18.48	5.25	6.15	12.21	3.95	6.39	12.58	3.95	12.81	19.19	5.55	5.11	7.65	2.65	6.28	9.42	2.65	13.50	20.89	...	5.80	10.14	15.21	...	4.20	9.05	13.57		
Fort Worth, Tex.	3.97	5.93	2.65	4.88	7.31	2.65	9.90	14.85	4.50	13.60	20.39	8.40	2.65	1.79	2.67	...	2.83	4.22	
Galveston, Tex.	5.87	8.79	2.65	5.97	8.79	2.65	5.91	1.48	...	15.56	23.30	6.80	3.98	14.94	3.95	19.37	32.98	6.85	
Georgetown, Tex.	6.51	9.91	2.65	3.55	5.32	2.65	3.34	5.00	2.40	13.24	19.85	5.80	7.45	11.15	...	16.52	24.77	7.10	2.25	3.57	...	2.10	1.57	2.34		
Greenville, Tex.	5.29	7.90	2.65	1.09	1.63	5.64	8.44	2.65	9.27	13.88	4.20	5.69	8.50	...	12.50	18.74	5.45	6.89	10.31	...	2.90	3.09	4.62	...	2.10	...		
Harrison, Tex.	6.78	10.17	2.90	10.98	16.45	4.50	10.75	16.11	4.75	6.94	10.40	...	20.65	30.96	8.95	14.86	22.26	...	23.28	34.90	9.45	6.18	7.77	...	3.86	13.46	...	4.20	13.04	19.64		
Houston, Tex.	4.88	7.31	2.65	4.88	7.31	2.65	14.57	21.82	6.30	8.99	13.46	3.95	16.34	24.50	6.85		
Kansas City, Mo.	13.87	20.78	6.05	14.57	21.82	6.30	6.80	9.98	14.94	3.95	19.37	32.98	6.85	
Laredo, Tex.	5.42	7.75	2.65	8.87	13.28	3.95	8.64	12.94	3.95	18.54	27.79	7.65	12.75	19.09	5.80	21.58	32.36	8.95	3.07	4.60	...	6.87	10.29	...	3.98	10.93	16.37		
Los Angeles, Calif.	27.85	43.93	10.80	8.26	12.36	4.20	6.31	9.46	2.65	36.08	61.11	15.75	
McAlester, Okla.	7.81	11.68	3.70	4.03	6.04	2.40	3.84	5.75	2.40	6.31	9.46	2.65	9.77	14.64	3.95	4.41	14.08	...	3.95	6.82	8.41	...	2.65	4.50	6.74	
McAllen, Tex.	6.78	10.17	2.90	10.98	16.45	4.50	10.75	16.11	4.75	6.94	10.40	...	20.65	30.96	8.95	14.86	22.26	...	23.28	34.90	9.45	6.18	7.77	...	3.86	13.46	...	4.20	13.04	19.64		
Minneapolis, Minn.	23.67	35.47	10.00	10.70	29.54	8.40	19.70	29.54	8.40	24.37	36.51	10.28	16.66	24.97	6.85	
Muskogee, Okla.	9.06	13.55	3.70	5.28	7.91	2.55	5.09	7.62	2.65	9.50	14.23	4.50	5.07	7.59	2.65	3.37	5.05	...	6.52	12.77	3.95	10.66	15.96	4.20	6.87	10.29	...	2.90	5.75	8.61		
Ocala, Fla.	8.08	12.08	3.95	8.99	13.46	3.95	6.86	10.28	2.90	10.85	16.27	4.20	9.68	14.49	4.50	6.40	9.32	...	3.90		
Parsons, Kan.	11.40	17.06	4.75	7.28	10.91	3.15	7.43	11.13	3.15	11.84	17.74	4.75	2.72	4.08	2.90	4.14	6.20	2.40	6.91	10.35	3.15	13.00	19.47	5.25	9.20	13.80	3.95	8.09	12.12	3.15		
St. Louis, Mo.	16.91	25.36	7.35	13.36	20.02	5.80	13.60	20.39	5.80	16.34	24.50	6.85	10.85	16.27	4.20	
St. Paul, Minn.	23.61	35.22	10.00	19.54	29.29	8.40	19.54	29.29	8.40	24.21	36.26	10.28	16.50	24.72	6.85	
San Antonio, Tex.	1.60	2.40	...	5.80	8.68	2.65	5.57	8.34	2.65	15.47	23.19	6.30	9.68	14.49	4.50	15.81	27.76	7.65		
Taylor, Tex.	3.47	5.19	2.65	3.25	4.86	2.40	3.07	4.60	2.40	13.15	19.71	5.80	7.46	11.16	15.21	24.31	6.30	3.32	3.48	...	1.48	2.21	...	5.54	8.30	3.70		
Temple, Tex.	1.52	2.27	...	2.69	4.03	2.10	2.47	3.70	...	3.46	5.18	2.65	12.59	18.55	6.00	6.58	9.85	3.15	17.42	23.61	6.05	3.15	4.72	2.10	7.70	1.04	...	4.76	7.14	2.65		
Tulsa, Okla.	10.09	15.10	4.20	5.88	8.81	2.65	6.12	9.17	2.65	10.54	15.78	4.50	4.96	7.41	2.65	3.38	5.33	2.10	9.09	13.69	...	11.69	17.51	4.75	7.87	11.80	3.15	5.66	9.83	...		
Waco, Tex.	2.20	3.28	...	2.00	2.99	...	1.79	2.67	...	3.71	5.57	2.65	11.69	17.52	5.25	6.40	9.32	2.90	15.06	22.66	6.05	3.80	5.69	2.65	4.08	6.11	2.65		
Wichita Falls, Tex.	6.26	9.36	2.90	2.83	4.22	...	2.83	4.22	...	7.17	10.75	3.15	10.13	15.19	4.75	16.21	24.38	6.05	7.86	11.77	3.70	4.08	6.11	2.65		

*Rail fare only; sleeping car charges additional.

Between St. Louis and Mexico City the lower berth rate is \$16.59

Between San Antonio and Mexico City the lower berth rate is \$10.29

Going to the Fairs?

Ask your nearest Katy representative (he's a trained travel expert) to help you arrange your visit to

NEW YORK CITY
(April 30 to October 31, 1939)
SAN FRANCISCO
(Feb. 18 to Dec. 2, 1939)

In connection with any rail ticket to New York or San Francisco, you may purchase American Express Travel Service tickets which assure you of hotel accommodations, taxicab transfers, sightseeing and admission to the Fairs. By thus making your arrangements in advance you avoid loss of time and inconvenience after arrival, and can determine even before you leave your home town what your trip will cost. You can choose a 2, 3, 4, 5- or 6-day visit. The cost of these advance arrangements is surprisingly low, the minimum for a 5-day visit averaging as low as \$3.10 per day.

STANDARD SLEEPING CAR CHARGES

A berth may be occupied by one or two persons provided they hold proper rail tickets; but where a child under five (5) years of age, accompanied by parent or guardian, occupies exclusively a berth or seat in sleeping car, in section other than that occupied by parent or guardian, half fare rail ticket will be collected in addition to the Pullman rate.

Where berth is	Upper berth rate is	Section (for one person) rate is	Obscure (for one person) rate is	Compart-ment one person	Compart-ment two or more	Drawing room one person	Drawing room rate is
\$ 2.10	\$ 1.60	\$ 2.80	\$ 3.25	\$ 4.20	\$ 6.30	\$ 5.25	\$ 7.35
2.40	1.80	3.20	3.70	4.75	6.85	6.05	8.40
2.65	2.00	3.55	4.10	5.25	7.35	6.50	9.45
2.90	2.20	3.90	4.50	5.80	8.40	7.35	10.50
3.15	2.40	4.20	4.85	6.30	9.45	7.90	11.55
3.40	2.						

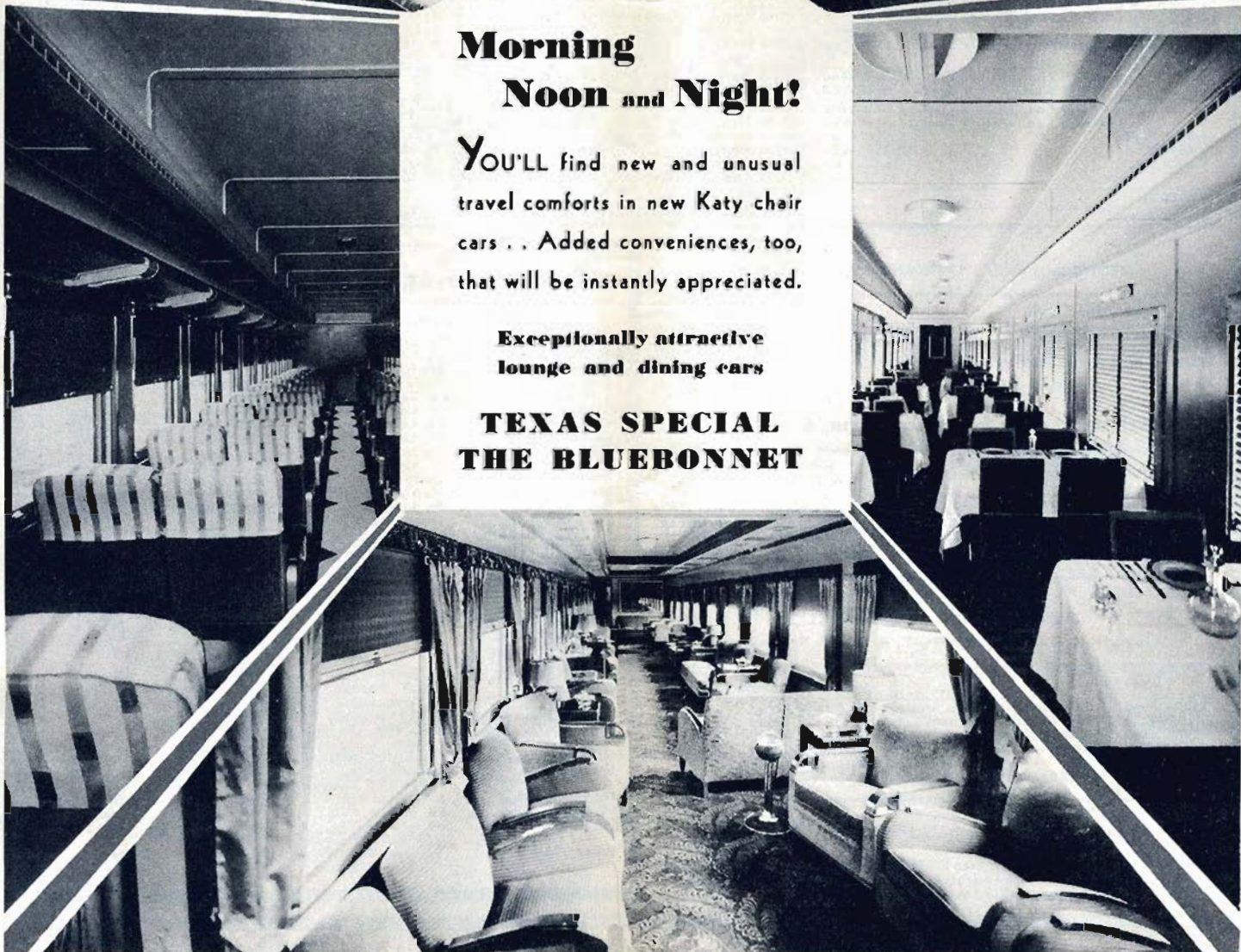


**Morning
Noon and Night!**

YOU'LL find new and unusual travel comforts in new Katy chair cars . . . Added conveniences, too, that will be instantly appreciated.

**Exceptionally attractive
lounge and dining cars**

**TEXAS SPECIAL
THE BLUEBONNET**



Fast, Through Katy Freight Service

SOUTHBOUND—Read Down				NORTHBOUND—Read Up					
KATY KOMET (See Note 2)	KATY KLIPPER No. 75-275	No. 73-273 (See Note 3)	No. 271 (See Note 1)	BULLET No. 71 (See Note 1)	(Examples by Days) DAILY Except as Shown	PACKER No. 74-274 (See Note 1)	ROCKET No. 76-276	No. 72-272	KATY KOMET (See Note 2)
	1:00 PM Mon. 3:30 AM Tue.			8:00 PM Mon. 11:30 AM Tue.	Lv. St. Louis, Mo. Ar. Parsons, Kan. Lv.	8:45 PM Thu. 8:30 AM Thu.	6:00 AM Wed. 2:00 PM Tue.	9:00 PM Wed. 11:00 PM Tue.	
	10:00 PM Mon.	8:00 PM Mon. 9:15 PM Mon. 12:35 AM Tue.	9:15 AM Tue. 10:30 AM Tue. 1:45 PM Tue.	5:00 AM Tue. 6:15 AM Tue. 9:45 AM Tue.	Lv. Kansas City, Mo. Ar. Paola, Kan. Lv. Parsons, Kan. Lv.	1:30 PM Thu.	12:01 PM Tue.	9:00 PM Tue. 7:25 PM Tue. 2:00 PM Tue.	3:00 AM Wed.
	2:45 AM Tue.	1:01 AM Tue. 3:38 AM Tue. 11:45 AM Tue.	2:30 PM Tue. 5:30 PM Tue. 2:30 AM Wed.	2:30 PM Tue. 5:30 PM Tue. 2:30 AM Wed.	Lv. Parsons, Kan. Ar. Bartlesville, Okla. Ar. Oklahoma City, Okla. Lv.	8:45 AM Thu.	6:00 AM Tue. 5:30 AM Tue. 2:38 AM Tue. 8:30 PM Mon.	12:45 PM Tue. 8:50 AM Tue. 10:13 PM Mon.	9:15 PM Tue.
	4:15 AM Tue. 8:00 AM Tue.	1:30 AM Tue. 5:45 AM Tue. 8:55 AM Tue. 9:50 AM Tue. 1:30 PM Tue.	2:45 PM Tue. 6:30 PM Tue.	12:15 PM Tue. 4:15 PM Tue. 6:26 PM Tue. 7:15 PM Tue. 11:15 PM Tue.	Lv. Parsons, Kan. Ar. Muskogee, Okla. Lv. Crowder, Okla. Lv. McAlester, Okla. Ar. Denison, Tex. Lv.	8:00 AM Thu. 4:30 AM Thu.	1:00 PM Tue. 8:00 AM Tue.	8:30 PM Tue. 3:45 PM Tue.	
	3:00 PM Tue.	12:05 AM Wed. 12:05 AM Wed.	1:30 AM Wed. 1:30 AM Wed.	12:05 AM Wed. 12:05 AM Wed.	Lv. Denison, Tex. Ar. Greenville, Tex. Lv. Dallas, Tex. Lv. Dallas, Tex. Ar.	11:15 PM Wed.	11:00 PM Mon. 11:59 PM Mon. (Via Denton) 6:30 PM Mon.	10:00 AM Tue.	
	7:00 PM Mon.	9:15 PM Tue. 5:00 AM Wed.	9:15 PM Tue. 5:00 AM Wed.	2:45 AM Wed. 8:45 AM Wed.	Lv. Denison, Tex. Ar. Wichita Falls, Tex. Lv.		4:57 AM Tue. 1:30 AM Tue.	4:00 AM Tue. 8:00 PM Mon.	
	7:30 PM Mon. 10:15 PM Mon. 7:15 AM Tue.	9:15 PM Tue. 5:00 AM Wed.	9:15 PM Tue. 5:00 AM Wed.	2:45 AM Wed. 8:45 AM Wed.	Lv. Denison, Tex. Ar. Ft. Worth, Tex. Lv. Ft. Worth, Tex. Ar. Waco, Tex. Ar. Houston, Tex. Ar. Galveston, Tex. Lv.	10:45 PM Wed. 7:00 PM Wed.	11:59 PM Mon. 7:00 PM Mon.	9:00 AM Tue. 5:00 AM Tue.	
	4:00 AM Tue. 6:45 AM Tue.	4:00 PM Tue. 8:30 PM Tue.	2:30 PM Tue. 6:30 PM Tue.	3:00 AM Wed. 7:30 AM Wed. 8:30 AM Wed. 12:30 PM Wed. Cons. No. 71 Waco	12:05 AM Wed. 5:00 AM Wed. 5:30 AM Wed. 10:30 AM Wed. 3:00 AM Thu. 8:00 AM Thu. 4:00 AM Thu. 4:30 AM Thu.		6:00 AM Wed. 11:00 PM Tue. 2:00 AM Tue. 6:15 PM Mon.	7:30 AM Tue. 4:30 AM Tue. 8:30 PM Mon.	
					Ar. Austin, Tex. Lv. San Antonio, Tex. Lv.		11:15 PM Mon.	7:00 PM Mon.	8:00 AM Tue.

BETWEEN KANSAS CITY AND ST. LOUIS, MO.

No. 273-74	No. 271-76	No. 71-275	No. 75-270
8:00 PM Mon. 9:00 PM Mon. 9:30 PM Tue.	9:15 AM Mon. 10:15 AM Mon. 5:00 AM Tue.	Lv. Kansas City, Ar. Paola, Kan. Lv. St. Louis, Mo. Lv.	9:00 PM Tue. 7:25 PM Tue. 8:00 PM Mon. 1:00 PM Mon.

BETWEEN GALVESTON, HOUSTON, AUSTIN, & SAN ANTONIO

No. 64-380-71	KOMET (See Note 2)	KOMET (See Note 2)	No. 70-381-53
11:15 PM Mon. 7:30 PM Mon. 3:00 AM Wed. 8:00 AM Wed.	7:00 PM Mon. 7:30 PM Mon. 7:15 AM Tue. 8:00 AM Tue.	Lv. San Antonio, Ar. Austin, Ar. Houston, Ar. Galveston, Ar. Lv.	6:45 AM Tue. 4:00 AM Tue. 2:00 AM Tue. 6:15 PM Mon.

CALIFORNIA-ARIZONA SCHEDULES

Via M.-K.-T., FORT WORTH—T. & P., EL PASO—S. P.

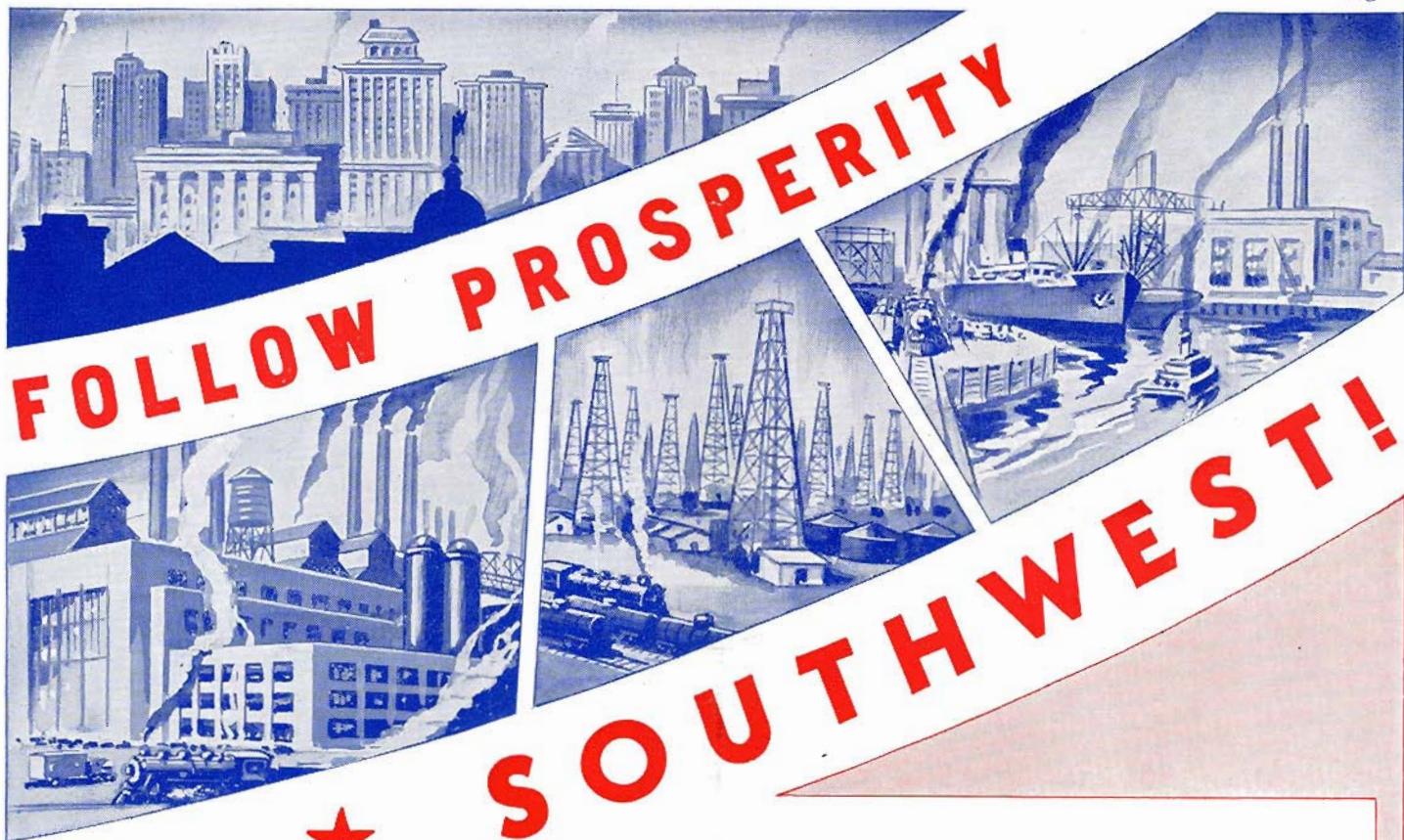
Westbound	Eastbound
8:00 PM Mon. 9:15 AM Tue. 7:30 AM Wed. 6:30 PM Thu. 3:00 AM Sat. 9:00 PM Sat.	1:00 PM Mon. 10:00 PM Mon. 8:30 PM Tue. 2:30 AM Thu. 9:00 PM Fri.
Lv. St. Louis, Ar. Kansas City, Ar. Fort Worth, Ar. El Paso (T&P), Ar. Phoenix (SP), Ar. Los Angeles (SP), Ar.	9:00 PM Tue. 8:00 AM Tue. 5:00 AM Mon.

Note 1—Through schedules apply via Fort Worth and not via Dallas.

Note 3—No. 73 is operated Parsons to Ft. Worth only when No. 273 out of Kansas City has Pacific Northwest Perishables billed to Louisiana points routing via Ft. Worth; otherwise, consolidates at Parsons with No. 75.

MERCHANDISE PACKAGE CAR SERVICE

FROM	Break Bulk Point	Route	Schedule
Chicago, Ill.	St. Louis, Mo.	Alton	1st Day
Chicago, Ill.	St. Louis, Mo.	C&E1	1st Day
Chicago, Ill.	Wichita Falls, Tex.	C&E1-MKT	3rd Day
Chicago, Ill.	Dallas, Tex.	Alton-MKT	3rd Day
Chicago, Ill.	St. Louis, Mo.	IC	1st Day
Cincinnati, Ohio	St. Louis, Mo.	B&O	1st Day
Cleveland, Ohio	St. Louis, Mo.	NKP	1st Day
Cleveland, Ohio	St. Louis, Mo.	Big Four	1st Day
Indianapolis, Ind.	St. Louis, Mo.	Big Four	1st Day
Louisville, Ky.	St. Louis, Mo.	Southern	1st Day
Memphis, Tenn.	Dallas, Tex.	RL-MKT	2nd Day
Milwaukee, Wis.	Kansas City, Mo.	CMS&P	2nd Day
Norfolk, Va.	St. Louis, Mo.	N&W-Big Four	3rd Day
Okla. City, Okla.	Humphreys, Okla. to		
Wichita Falls, Tex.	Victory, Okla. to	Frisco-MKT	1st Day
Okla. City, Okla.	Wellington, Tex.	Frisco-MKT	1st Day
Okla. City, Okla.	Martha, Okla. to	Frisco-MKT	1st Day
Forgan, Okla. & BM&E Points		Frisco-MKT	1st Day
Pittsburgh, Pa.	St. Louis, Mo.	Penna.	2nd Day
Springfield, Ohio	St. Louis, Mo.	Big Four	1st Day
St. Joseph, Mo.	Kansas City, Mo.	CB&Q	1st Day
Dallas, Tex.	Ft. Smith, Ark.	MKT-MV	2nd Day
Dallas, Tex.	LA&T Points via Greenville, Tex.	MKT-LA&T	1st Day
Dallas, Tex.	SSW Points via Waco.	MKT-SSW	1st Day
Kansas City, Mo.	NEO Pts. via Colum-bus.	MKT-NEO	1st Day
Kansas City, Mo.	Ft. Smith, Ark.	MKT-MV	2nd Day
San Antonio, Tex.	Temple, Tex. (GC&SF Depot)	MKT-GC&SF	1st Day
St. Louis, Mo.	NEO Ry. Points	MKT-NEO	2nd Day
St. Louis, Mo.	Ft. Smith, Ark.	MKT-MV	2nd Day
St. Louis, Mo.	Ft. Worth, Tex. (FW&DC Depot)	MKT-FW&DC	2nd Day
Waco, Tex.	Temple, Tex. (GC&SF Depot)	MKT-GC&SF	1st Day



FOLLOW PROSPERITY

SOUTHWEST!



The Southwest Compels . . .
the attention of
INDUSTRY and COMMERCE

**FAMOUS
 Southwestern
 FIRSTS!**

- 1st . . . in the production of crude oil, natural and helium gas.
- 1st . . . in the number of cattle, calves, sheep and lambs.
- 1st . . . in numbers of quality citrus fruit trees and winter production of spinach and onions.
- 1st . . . in the value of agricultural crops, the number of acres harvested and in pasturage.
- 1st . . . in the production of wool, mohair, cotton, sulphur and carbon black.

● The Southwest is today's industrial frontier. Nowhere else in America does there exist such unlimited natural resources, unexcelled industrial, commercial and agricultural opportunities.

● Remarkable population growths are creating attractive new, responsive markets—valuable new minerals are discovered—new agricultural products developed . . . fuel is cheap—power rates low—taxes reasonable. Here are tremendous sources of basic raw materials . . . labor conditions are favorable and the mild climate permits year 'round operation.

● Find out more about the specific advantages and sales possibilities of this vast thriving territory . . . You'll feel the urge to align yourself, your hopes and ambitions with this country of promise!

● The M-K-T Industrial Dept. will give detailed information, make surveys, render complete service. All inquiries are handled in strictest confidence—no obligation—write or see . . .

GEO. C. SMITH
 Assistant to President, M-K-T Lines
 Industrial Development Dept.
 St. Louis, Mo., or Dallas, Texas