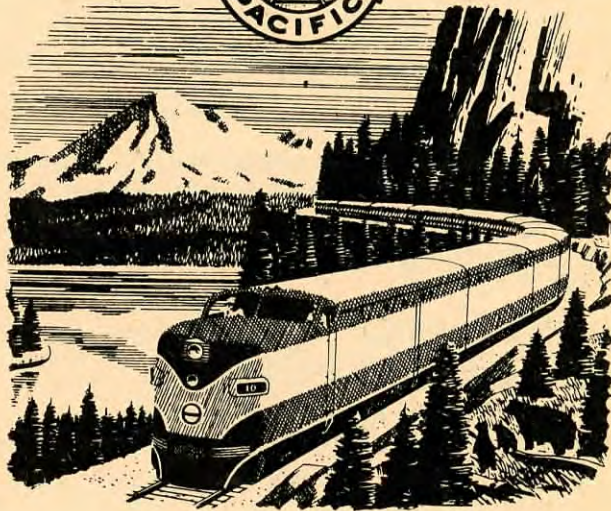


S·P

The Friendly Southern Pacific

Shasta Route

TIME TABLES



PORTLAND · SAN FRANCISCO

Information Shown Herein is Subject to Change Without Notice

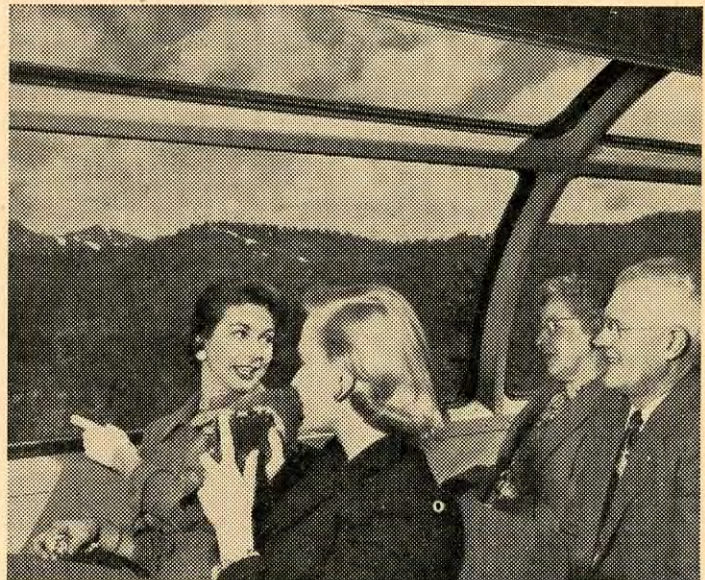
CLAUDE E. PETERSON, VICE PRESIDENT
SYSTEM PASSENGER TRAFFIC — PUBLIC RELATIONS
SAN FRANCISCO

B. S. QUAYLE, PASSENGER TRAFFIC &
PUBLIC RELATIONS MANAGER, PORTLAND, OREGON

SHASTA ROUTE • SOUTHBOUND

SEATTLE - TACOMA - SPOKANE - PORTLAND - SACRAMENTO - OAKLAND - SAN FRANCISCO - FRESNO - BAKERSFIELD - LOS ANGELES

		Shasta Daylight (Streamlined) No. 9 Daily Example		Cascade (Streamlined) No. 11 Daily Example		Passenger No. 19 Daily Example	
Lv Vancouver, B. C.	G.N.	6 30	Sa	8 00	Su	1 00	Su
Ar Seattle	"	10 25	Sa	12 10	Su	4 35	Su
Lv Spokane	U.P.	7 30	Sa	7 30	Sa		
Ar Portland	"	5 30	Su	5 30	Su		
Lv Spokane	(N.P.) S.P.&S.	8 50	Sa	7 25	Su	7 25	Su
Lv Spokane	(G.N.) S.P.&S.	9 45	Sa				
Ar Portland	S.P.&S.	6 00	Su	8 20	Su	8 20	Su
Lv Seattle (Union Sta.)	U.P.	11 45	Sa			5 00	Su
Lv Seattle (King St.)	G.N.-N.P.			12 30	Su		
Lv Tacoma	"	1 15	Su	1 26	Su	6 02	Su
Ar Portland	G.N.-N.P.-U.P.	5 45	Su	4 30	Su	9 15	Su
Lv Portland	S.P.	7 45	Su	4 45	Su	10 15	Su
Lv Salem	"	8 57	Su	5 57	Su	11 57	Su
Lv Albany	"	9 28	Su	6 28	Su	12 42	Mo
Ar Eugene	"	10 09	Su	7 09	Su	1 35	Mo
Lv Eugene	"	▲10 45	Su	▲7 55	Su	↓	
Lv Grants Pass	"	4 01	Su	11 46	Su		
Lv Medford	"	5 35	Su	12 45	Mo		
Ar Ashland	"	▲6 01	Su	▲1 10	Mo		
Lv Eugene	"	↓		↓		▲3 55	Mo
Lv North Bend	"					▲7 01	Mo
Ar Coos Bay	"					▲7 08	Mo
Lv Eugene	"	10 14	Su	7 14	Su	2 00	Mo
Lv Klamath Falls	"	2 35	Su	11 43	Su	7 55	Mo
Ar Dunsmuir	"	4 55	Su	2 20	Mo	11 00	Mo
Lv Grants Pass	"	■11▲55	Su			↓	
Lv Medford	"	■12▲53	Su				
Lv Ashland	"	■1▲18	Su				
Ar Dunsmuir	"	■4▲25	Su				
Lv Dunsmuir	"	5 05	Su	2 30	Mo	11 25	Mo
Lv Redding	"	6 36	Su	4 07	Mo	1 25	Mo
Ar Gerber	"	7 22	Sa	4 53	Mo	2 40	Mo
Ar Davis	"	9 08	Sa	6 40	Mo	5 25	Mo
Lv Davis (S.P. Depot)	"	▲9 15	Su	▲6 50	Mo	▲6 30	Mo
Ar Sacramento (S.P. Depot)	"	▲9 40	Su	▲7 15	Mo	▲6 55	Mo
Lv Gerber No. 201	"	↓		↓		2 55	Mo
Lv Chico	"					3 39	Mo
Lv Marysville	"					4 52	Mo
Ar Sacramento No. 201	"					6 25	Mo
Lv Sacramento No. 60	"	↓		↓		7 45	Mo
Ar Stockton	"					8 55	Mo
Ar Fresno	"					11 45	Mo
Ar Bakersfield	"					2 10	Tu
Ar Los Angeles No. 60	"					7 45	Tu
Lv Davis	"	9 11	Su	6 45	Mo	5 30	Mo
Ar Martinez	"	9 57	Su	7 31	Mo	6 24	Mo
Lv Martinez	"	10 23	Su	9 13	Mo		
Ar Fresno	"	2 20	Mo	12 40	Mo		
Ar Bakersfield	"	4 57	Mo	2 51	Mo		
Ar Los Angeles	"	10 50	Mo	7 55	Mo		
Ar Berkeley	"	10 34	Su	8 16	Mo	7 19	Mo
Ar Oakland (16th St.)	"	10 43	Su	8 26	Mo	7 30	Mo
Ar Oakland Pier } Ferry	"	10 55	Su	8 35	Mo	a 7 40	Mo
Ar San Francisco } Market St.	"	11 30	Su	9 10	Mo	a 9 00	Mo



THE SHASTA DAYLIGHT shows you Mt. Shasta, the Cascade Mountains, lakes, forests, streams from its full-length Dome Lounge and giant "skyview" picture windows.

TRAIN 19 PASSENGER

Chair Car: ★Portland to San Francisco. No Meal Service.

TRAIN 201

Gerber, Marysville, Sacramento

Coach: ★Gerber to Sacramento.

Baggage: see Agent.

PASSENGERS USE FERRY STEAMER FROM OAKLAND PIER TO SAN FRANCISCO

TRAIN 9 STREAMLINER SHASTA DAYLIGHT

Streamlined Air-Conditioned Train. Please reserve seats in advance. Special service charge applicable in chair cars—See Note A. Passenger Agent and Porter Service. Radio.

Parlor-Observation Car: ★Portland to San Francisco. (Railroad owned.) Car S-99.

Chair Cars: ★Portland to San Francisco. Cars 90 to 98 incl., 100, 101.

Dome Lounge Car: ★Portland to San Francisco.

Coffee Shop Car: ★Portland to San Francisco.

Tickets Honored: Ask Agents.

TRAIN 11 STREAMLINER CASCADE

Public Telephone.

Full Lounge Car: ★Portland to San Francisco.

Standard Sleepers: ★Seattle to San Francisco (or N. P. No 408 to Portland.) (6 BR., 10 Rmts.) Cars 113-114. (4 Compts., 4 BR., 2 DR.) Car 115.

★Portland to San Francisco.

(6 BR., 10 Rmts.) Cars 111-116. (12 BR.,) Car 117.

Chair Cars: ★Portland to San Francisco. Cars 12-13.

Reclining Leg Rest Seats. (Please reserve in advance.)

Special service charge applicable in chair cars—See Note A.

Pillow service available at nominal charge.

Dining Car: ★Portland to San Francisco. (Dinner served from Portland.)

Tickets Honored: Ask Agents.

NOTE A—SPECIAL SERVICE CHARGE

The Service Charge is \$1.00 (plus Federal Tax) for each chair car seat occupied by adult, or child of any age, between Portland and San Francisco: proportionate charges to and from intermediate points. (Service Charge Tickets sold in advance will not be redeemable unless space reserved is released for resale not later than the day before departure of train. Service Charge Tickets sold on day of departure will not be redeemable unless space reserved is released at least three (3) hours prior to departure of train.)

All PM time in Dark faced figures.

★—Regularly assigned cars are air-conditioned.

▲—Pacific Greyhound Bus. (Rail tickets honored.)

■—S. P. Depot.

■—Revenue passengers from No. 19 will be handled by taxi between Oakland Pier and San Francisco.

SHASTA ROUTE • NORTHBOUND

SAN FRANCISCO - OAKLAND - SACRAMENTO - LOS ANGELES - BAKERSFIELD - FRESNO - PORTLAND - SPOKANE - TACOMA - SEATTLE

	Shasta Daylight (Streamlined) No. 10 Daily Example		Cascade (Streamlined) No. 12 Daily Example		Passenger No. 20 Daily Example		Trains No. 224-202 Daily Example	
Lv San Francisco Market St.	7 30	Su	4 00	Su	8 00	Su	7 30	Mo
Lv Oakland Pier / Ferry	8 05	Su	4 38	Su	8 35	Su	7 55	Mo
Lv Oakland (16th St.)	8 13	Su	4 47	Su	8 44	Su	8 01	Mo
Lv Berkeley	8 21	Su	4 56	Su	8 54	Su	8 08	Mo
Lv Los Angeles	6 10	Sa	6 50	Su	↓	Su		
Lv Bakersfield	11 47	Sa	11 52	Su	↓	Su		
Lv Fresno	2 20	Su	2 00	Su	↓	Su		
Ar Martinez	b	Su	5 22	Su	↓	Su		
Lv Martinez	8 57	Su	6 44	Su	9 44	Su	8 44	Mo
Ar Davis	9 42	Su	6 30	Su	10 40	Su	9 32	Mo
Ar Sacramento							9 50	Mo
Lv Los Angeles	Seats reserved in advance		6 50	Su	↓	Su	7 35	Su
Lv Bakersfield			11 52	Su	↓	Su	1 10	Mo
Lv Fresno			2 00	Su	↓	Su	4 10	Mo
Lv Stockton			4 45	Su	↓	Su	6 55	Mo
Ar Sacramento			6 00	Su	↓	Su	8 10	Mo
Lv Sacramento No. 202			↓		↓		10 10	Mo
Lv Marysville			↓		↓		11 38	Mo
Lv Chico			↓		↓		1 02	Mo
Ar Gerber No. 202			↓		↓		1 48	Mo
Lv Sacramento (S. P. Depot)	▲ 9 05	Su	▲ 5 59	Su	▲ 8 25	Su		
Ar Davis (S. P. Depot)	▲ 9 30	Su	▲ 6 15	Su	▲ 8 50	Su		
Lv Davis	9 46	Su	6 35	Su	11 10	Su		
Lv Gerber	11 34	Su	8 30	Su	2 45	Mo		
Lv Redding	12 20	Su	9 16	Su	4 07	Mo		
Ar Dunsmuir	1 52	Su	10 50	Su	6 10	Mo		
Lv Dunsmuir	▲ 2 05	Su	▲ 5 56	Mo	↓			
Lv Ashland	▲ 5 08	Su	▲ 4 29	Mo	↓			
Lv Medford	▲ 5 45	Su	▲ 5 05	Mo	↓			
Ar Grants Pass	▲ 6 35	Su	▲ 5 53	Mo	↓			
Lv Dunsmuir	1 58	Su	10 57	Su	6 40	Mo		
Ar Klamath Falls	4 35	Su	1 25	Mo	9 50	Mo		
Ar Eugene	8 59	Su	5 49	Mo	3 45	Mo		
Lv Coos Bay	↓		↓		▲ 6 20	Su		
Lv North Bend	↓		↓		▲ 6 26	Su		
Ar Eugene	↓		↓		▲ 9 28	Su		
Lv Ashland	▲ 2 50	Su	▲ 10 41	Su	↓			
Lv Medford	▲ 3 30	Su	▲ 11 20	Su	↓			
Lv Grants Pass	▲ 4 20	Mo	▲ 12 10	Mo	↓			
Ar Eugene	▲ 8 35	Su	▲ 3 38	Mo	↓			
Lv Eugene	9 04	Su	5 55	Mo	4 10	Mo		
Ar Albany	9 43	Su	6 34	Mo	5 15	Mo		
Ar Salem	10 11	Su	7 02	Mo	5 57	Mo		
Ar Portland	11 25	Su	8 15	Mo	7 55	Mo		
Lv Portland	11 45	Su	9 00	Mo	11 45	Mo		
Ar Tacoma	4 10	Mo	12 01	Mo	4 10	Tu		
Ar Seattle (King St.)			1 00	Mo	6 15	Tu		
Ar Seattle (Union Sta.)	6 15	Mo						
Lv Portland	8 30	Mo	3 00	Mo	9 45	Mo		
Ar Spokane	6 50	Mo	10 38	Mo				
Ar Spokane			10 25	Mo	6 10	Tu		
Lv Portland					9 30	Mo		
Ar Spokane					6 30	Tu		
Lv Seattle	8 05	Mo	2 00	Mo	8 05	Tu		
Ar Vancouver, B.C.	11 59	Mo	5 40	Mo	11 59	Tu		

TRAIN 12 STREAMLINER CASCADE

Public Telephone.

Full Lounge Car: ★San Francisco to Portland.

Standard Sleepers: ★San Francisco to Seattle. (On U. P. No. 457 from Portland.)

(6 BR., 10 Rmets.) Cars 123-124. (4 Compts., 4BR., 2 DRooms) Car 125.

★San Francisco to Portland.

(6 BR., 10 Rmets.) Cars 121-126. (12 BR.) Car 127.

Chair Cars: ★San Francisco to Portland. Cars 12-13, Reclining Leg Rest Seats.

(Please reserve in advance.) Special service charge applicable in chair cars—See Note A.

Pillow service available at nominal charge.

Dining Car: ★San Francisco to Portland. (Dinner served from San Francisco.)

Tickets Honored: Ask Agents.

TRAIN 20 PASSENGER

Chair Car: ★San Francisco to Portland. No Meal Service.

TRAINS 224-202

San Francisco, Sacramento, Marysville, Gerber

Coach: ★San Francisco to Sacramento.

★Sacramento to Gerber.

Baggage: see Agent.

Snack-Lounge-Observation: ★San Francisco to Sacramento.

NOTE A—SPECIAL SERVICE CHARGE

The Service Charge is \$1.00 (plus Federal Tax) for each chair car seat occupied by adult, or child of any age, between Portland and San Francisco; proportionate charges to and from intermediate points. (Service Charge Tickets sold in advance will not be redeemable unless space reserved is released for resale not later than the day before departure of train. Service Charge Tickets sold on day of departure will not be redeemable unless space reserved is released at least three (3) hours prior to departure of train.)

PASSENGERS USE FERRY STEAMER FROM SAN FRANCISCO TO OAKLAND PIER.

TRAIN 10 STREAMLINER SHASTA DAYLIGHT

Streamlined Air-Conditioned Train. Please reserve seats in advance. Special service charge applicable in chair cars—See Note A.

Passenger Agent and Porter service. Radio.

Parlor-Observation Car: ★San Francisco to Portland. (Railroad-Owned.) Car S-99.

Chair Cars: ★San Francisco to Portland. Cars 90 to 98 incl., 100, 101.

Dome Lounge Car: ★San Francisco to Portland.

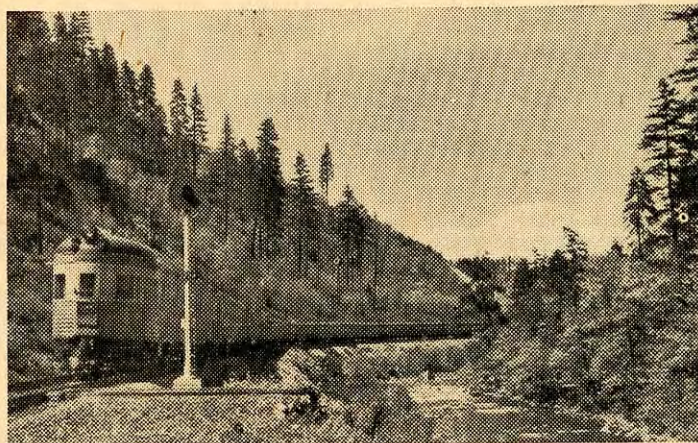
Coffee Shop Car: ★San Francisco to Portland

Tickets Honored: Ask Agents.

All PM time in dark faced figures. ★—Regularly assigned cars are air-conditioned.

▲—Pacific Greyhound Bus. (Rail tickets honored.) *—P.G.L. Depot.

b—Train 57 arrives Oakland Pier at 7:15AM connecting with Train 10. ■—S. P. Depot.



See the Sacramento River Canyon on the
STREAMLINER SHASTA DAYLIGHT

SHASTA ROUTE • SOUTHBOUND

PORTLAND - SACRAMENTO - SAN FRANCISCO - LOS ANGELES

Portland, Salem, Eugene, Klamath Falls, Dunsmuir, Davis, Sacramento, San Francisco



All PM time in dark faced figures.

△-Air Mail dispatched.

■-Pacific Greyhound Bus. (S. P. Depot.)

•P.G.L. Depot.

▲-Pacific Greyhound Bus. (Rail tickets honored.)

↓P.G.L. Bus To and From P.G.L. Depots. Rail and Bus Depot 1/4 mile apart. (Rail tickets honored.)

†-On Call Taxi Service between Crockett Station and Vallejo, City Ticket Office, 401 York Street.

a-Revenue passengers from No. 19 will be handled by taxi between Oakland Pier and San Francisco.

b-Stops to detrain pay passengers from Klamath Falls and beyond; also entrain for Davis and beyond.

d-Stops on flag to entrain pay passengers for Eugene and beyond.

e-Stops on flag to detrain pay passengers from Eugene and beyond.

f-Flag stop to entrain or detrain passengers.

j-Stops on flag to detrain pay passengers from Portland and beyond; also to entrain for Eugene and beyond.

n-Stops on flag Monday, Wednesday and Thursday.

p-Stops on flag to detrain pay passengers from Klamath Falls and beyond.

o-Stops on flag to entrain pay passengers for points west of Davis.

w-Stops on flag daily except Sunday.

S. P. rail tickets will be honored on Pacific Greyhound buses taking passengers from trains at Dunsmuir for Siskiyou Line points.

Gerber, Sacramento, Los Angeles, San Diego

CONNECTING SERVICE (Daily)

Elev	Mls.	No. 201		
251 Lv Gerber	0	2 55		
231 " Tehama	2	2 58		
234 " Los Molinos	4	3 03		
218 " Vina	11	3 39		
200 " Chico	30	3 39		
171 " Durham	36	3 46		
132 " Nelson	42	3 56		
118 " Richvale	46	4 02		
104 " Biggs	52	4 11		
103 " Gridley	56	4 27		
87 " Live Oak	62	4 27		
79 " Marysville	73	4 52		
97 " Wheatland	86	5 09		
122 " Sheridan	89			
173 " Lincoln	97	5 27		
168 " Roseville	107	5 46		
42 Ar Sacramento	125	6 25		

Sacramento - Los Angeles

	Mls.	No. 54-52	No. 60	
42 Lv Sacramento	0	8 20	7 45	
19 " Stockton	48	9 35	8 55	
167 " Merced	115	11 40	10 28	
287 " Fresno	170	12 49	12 01	
417 " Bakersfield	278	2 58	2 20	
432 " Glendale	442	7 37	7 23	
297 Ar Los Angeles	447	7 55	7 45	

Martinez - Los Angeles

	Mls.	No. 52	No. 58	
7 Lv Martinez	0	9 13	10 23	
287 Ar Fresno	170	12 40	2 20	
417 Ar Bakersfield	278	2 51	4 57	
297 Ar Los Angeles	447	7 55	10 50	

Los Angeles - San Diego

Santa Fe Ry.	70	72	74	76	78	80
Lv Los Angeles	7 45	10 00	1 00	5 30	8 00	11 30
Ar San Diego	10 15	12 45	3 30	8 00	10 30	2 45

SISKIYOU LINE SERVICE

Eugene - Grants Pass - Medford - Ashland - Dunsmuir Pacific Greyhound Lines Bus (Daily) Rail Tickets Honored

Elev	Mls.	No. 9	No. 11	No. 19
30 Lv Portland, Ore.	0	7 45	4 45	10 15
426 Ar Eugene	124	10 09	7 09	1 35
	Mls.	PGL Stations	PGL Stations	PGL Stations
426 Lv Eugene	0	▲10 45	▲7 55	▲3 00
643 Ar Cottage Grove	21	11 28	/	/
520 Ar Sutherlin	61	12 42	/	/
459 Ar Roseburg	75	1 10	9 40	4 33
459 Ar Roseburg	75	1 40	9 51	4 45
609 Ar Myrtle Creek	97	2 16		
		Sou Pac Stations		
935 Ar Grants Pass	173	3 56	11 41	6 35
935 Lv Grants Pass	173	▲11 55	4 01	11 46
1081 Ar Gold Hill	190	12 22	4 30	6 40
1370 Ar Medford	206	12 45	4 57	12 30
1370 Lv Medford	206	12 53	5 35	12 45
1869 Ar Ashland	218	1 13	▲6 01	▲1 10
1869 Lv Ashland	218	1 18		▲8 35
2335 Ar Yreka Inn	263	2 45		
2449 Ar Weed	299	3 47		
2553 Lv Mt. Shasta	316	4 05		
2286 Ar Dunsmuir	331	▲4 25		
		No. 9		
2286 Lv Dunsmuir	425	5 05		
8 Ar San Francisco (Mkt.)	718	11 30		

Elev	Mls.	Shasta Daylight No. 9 Daily	Cascade No. 11 Daily	Passenger No. 19 Daily
30 Lv Portland, Ore.△	0	7 45	4 45	10 15
110 " Clackamas	11			
74 " Oregon City	16			10 50
151 " Canby	24			11 06
182 " Hubbard	32			
182 " Woodburn	36			11 22
163 " Chemawa	48			j
163 " Salem	53	8 57	5 57	11 57
286 " Turner	60			
301 " Marion	67			
240 " Jefferson	72			
213 Ar Albany	80	9 28	6 28	12 42
213 Lv Albany	0	▲11 03	▲8 01	▲12 10
227 Ar Corvallis	10	▲11 20	▲8 18	▲12 27
227 Lv Corvallis	0	▲8 43	▲4 30	▲10 45
213 Ar Albany	10	▲9 00	▲4 47	▲11 02
213 Lv Albany	80	9 28	6 28	12 42
282 " Halsey	97			
309 " Harrisburg	106			
326 " Junction City	110			1 15
426 Ar Eugene	124	10 09	7 09	1 35
426 Lv Eugene	124	10 14	7 14	2 00
457 " Springfield	128			2 08
1108 " Westfir	165			w
1206 " Oakridge	167			3 01
2076 " McCreddie Springs	178			n
4885 " Cascade Summit	211			4 50
4844 " Odell Lake	215			
4779 " Crescent Lake	219			5 19
4759 " Chemult	244			5 50
4188 " Chiloquin	291			6 42
4105 Ar Klamath Falls	318	2 25	11 33	7 30
4105 Lv Klamath Falls	318	2 35	11 43	7 55
4241 " Dorris, Cal.	340			8 23
4261 " Maedoe	351			8 34
4259 " Mt. Hebron	353			
4673 " Leaf	367			
5063 " Grass Lake	379			
3898 " Black Butte, Cal.	402			
3553 " Mt. Shasta	410			10 10
2553 " Shasta Springs	422			
2286 Ar Dunsmuir	425	4 55	2 20	11 00
2286 Lv Dunsmuir	425	5 05	2 30	11 25
1943 " Castella	432			
845 " Central Valley	474			
554 " Redding	482	6 36	4 07	1 25
431 " Anderson	493			1 38
421 " Cottonwood	500			1 49
305 " Red Bluff	517			2 20
251 Ar Gerber	526	7 22	4 53	2 40
251 Lv Gerber	526	7 27	4 58	2 50
231 " Tehama	528			
283 " Richfield	533			
284 " Corning	536			3 07
233 " Kirkwood	541			
266 " Orland	549			3 26
176 " Artois	558			
143 " Willows	565			3 47
104 " Norman	573			
101 " Delavan	576			
101 " Maxwell	582			4 05
90 " Williams (Colusa)	591			4 19
146 " Arbuckle	601			4 30
58 " Zamora	619			
69 " Woodland	630			5 11
51 Ar Davis	639	9 08	6 40	5 25
51 Lv Davis	0	▲9 15	▲6 50	▲6 30
42 Ar Sacramento	13	▲9 40	▲7 15	▲6 55
51 Lv Davis	639	9 11	6 45	5 30
64 " Dixon	647			
7 " Sulun-Fairfield	666		7 06	5 59
7 " Martinez	683	9 57	7 31	6 24
10 " Crockett (To Vallejo)†	689		7 42	6 40
38 Ar Richmond	703		8 04	7 05
16 Ar Berkeley	709	10 34	8 16	7 19
9 Ar Oakland (16th St.)△	712	10 43	8 26	7 30
11 Ar Oakland Pier△	714	10 55	8 35	7 40
11 Lv Oakland Pier (Ferry)	714	11 10	8 50	7 40
8 Ar San Francisco (Mkt)△	718	11 30	9 10	7 40
TRAIN NUMBERS		9	11	19

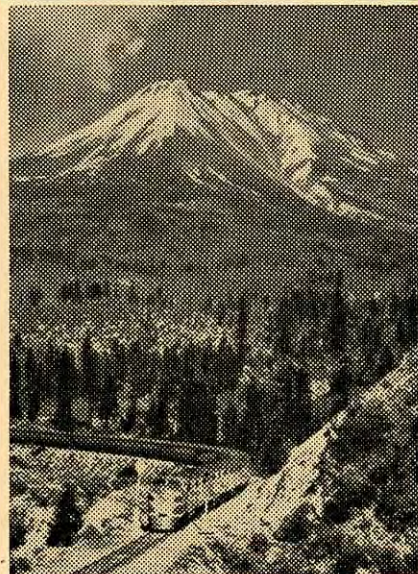
Ride the Spectacular DOME LOUNGE CAR on the Shasta Daylight SAN FRANCISCO—PORTLAND

SHASTA ROUTE • NORTHBOUND

SAN FRANCISCO - (LOS ANGELES) - SACRAMENTO - PORTLAND

San Francisco, Sacramento, Davis, Duns-
muir, Klamath Falls, Eugene, Salem
Portland

Elev	Mis.	Shasta Daylight No. 10 Daily	Cascade No. 12 Daily	Passenger No. 20 Daily		
8	Lv	San Francisco Mkt. St.	0	7 30	4 00	8 00
11	Ar	Oakland Pier, Ferry..	4	7 50	4 20	8 20
11	Lv	Oakland Pier. Δ	4	8 05	4 38	8 35
9	"	Oakland (16th St.) Δ	6	8 13	4 47	8 44
16	"	Berkeley	9	8 21	4 56	8 54
38	"	Richmond	15		5 05	9 06
10	"	Crockett (to Vallejo)	29		5 26	9 30
7	Ar	Martinez	35	8 57	5 44	9 44
7	Lv	Martinez	35	8 57	5 44	9 44
7	"	Suisun-Fairfield..	52			10 08
64	"	Dixon	70			
51	Ar	Davis	79	9 42	6 30	10 40
42	Lv	Sacramento	0	9 05	5 50	8 25
51	Ar	Davis	13	9 30	6 15	8 50
51	Lv	Davis	79	9 46	6 35	11 10
69	"	Woodland	88			11 26
58	"	Zamora	99			
146	"	Arbuckle	116			11 57
90	"	Williams (Colusa)	127			12 13
101	"	Maxwell	136			12 23
104	"	Norman	145			
143	"	Willows	153			1 00
176	"	Artois	160			
266	"	Orland	168			1 38
284	"	Corning	181			2 08
283	"	Richfield	185			2 18
231	"	Tehama	189			2 30
251	Ar	Gerber	191	11 27	8 25	2 35
251	Lv	Gerber	191	11 34	8 30	2 45
305	"	Red Bluff	201			2 58
421	"	Cottonwood	218			
431	"	Anderson	225			
554	"	Redding	236	12 20	9 16	4 07
845	"	Central Valley	244			
2286	Ar	Dunsmuir	293	1 52	10 50	6 10
2286	Lv	Dunsmuir	293	1 58	10 57	6 40
2553	"	Shasta Springs	296			
3553	"	Mt. Shasta	307			7 20
3898	"	Black Butte	316			
5063	"	Grass Lake	339			
4673	"	Leaf	351			
4646	"	Bray	352			8 39
4259	"	Mt. Hebron	364			
4261	"	MacDoel	367			9 02
4241	"	Dorris, Calif.	377			9 22
4105	Ar	Klamath Falls	400	4 35	1 25	9 50
4105	Lv	Klamath Falls	400	4 45	1 35	10 20
4188	"	Chiloquin	427			10 50
4759	"	Chemult	474			11 55
4779	"	Crescent Lake	499			12 44
4844	"	Odell Lake	502			
4885	"	Cascade Summit	507			12 53
2076	"	McCredie Springs	540			
1206	"	Oakridge	551			2 35
1108	"	Westfir	553			
457	"	Springfield	590			3 28
426	Ar	Eugene	594	8 59	5 49	3 45
426	Lv	Eugene	594	9 04	5 55	4 10
326	"	Junction City	607			4 28
309	"	Harrisburg	612			
282	"	Halsey	620			4 43
213	Ar	Albany	638	9 43	6 34	5 15
213	Lv	Albany	0	10 01	9 01	6 12
227	"	Ar Corvallis	10	10 18	9 18	6 29
227	Lv	Ar Corvallis	0	7 57	6 20	4 30
213	Ar	Albany	10	8 14	6 37	4 47
213	Lv	Albany	638	9 43	6 34	5 15
240	"	Jefferson	646			
163	"	Salem	665			5 57
163	"	Chemawaw	670	10 11	7 02	
182	"	Woodburn	682			6 30
151	"	Canby	693			6 53
74	"	Oregon City	702			7 08
110	"	Clackamas	707			
30	Ar	Portland, Ore.	718	11 25	8 15	7 55
		TRAIN NUMBERS		10	12	20



SEE MOUNT SHASTA FROM "SHASTA DAYLIGHT." Majestic Mount Shasta (14,161 feet high) is a spectacular sight as seen from the Dome Lounge and extra-large "sky view" windows of the "Shasta Daylight."

All PM time in Dark faced figures.

▲ Pacific Greyhound Bus. (S. P. Depot.)

▲ P.G.L. Bus. To and From P.G.L. Depots. Rail and Bus Depot 1/4 mile apart. (Rail tickets honored.)

△ Air Mail dispatched.

▲ Pacific Greyhound Bus. (Rail tickets honored.)

▲ Train 57 arrives Oakland Pier at 7:15 AM connecting with Train 10.

▲ Stops daily except Sunday and holidays.

▲ Stops on flag to entrain pay passengers for Eugene and beyond; also to detrain from Gerber and beyond.

▲ Stops on flag to entrain pay passengers for Black Butte and beyond.

▲ Flag stop to entrain or detrain passengers.

▲ Stops on flag to entrain pay passengers for Klamath Falls and beyond; also detrain from Davis and beyond.

▲ Stops on flag to detrain pay passengers from Sacramento and beyond; also entrain for Klamath Falls and beyond.

▲ Stops on flag to detrain pay passengers from Crescent Lake and beyond; also to entrain for Eugene and beyond. Stops on flag on Sundays.

▲ Stops on flag to entrain pay passengers for Eugene and beyond.

▲ Stops to discharge passengers from points Redding and south.

▲ Stops on flag to detrain pay passengers from Davis and beyond.

▲ Stops on flag to detrain pay passengers from Eugene and beyond; also entrain for Portland and beyond.

S. P. rail tickets will be honored on Pacific Greyhound buses taking passengers from trains at Dunsmuir for Siskiyou Line points.

San Diego, Los Angeles, Sacramento, Gerber

CONNECTING SERVICE (Daily)

San Diego - Los Angeles

Santa Fe Ry.	71	73	75	77	79	81
Lv San Diego	6 30	9 00	11 15	3 30	6 00	9 30
Ar Los Angeles	9 00	11 30	1 45	6 05	8 30	12 30

Los Angeles - Martinez

Elev	Mis.	No. 57	No. 51	No. 51		
297	Lv	Los Angeles	0	6 10	6 50	6 50
417	"	Bakersfield	169	11 47	11 52	11 52
287	"	Fresno	277	2 20	2 00	2 00
7	Ar	Martinez	447	5 53	5 22	5 22

Los Angeles - Sacramento

Elev	Mis.	No. 53	No. 53	No. 59		
297	Lv	Los Angeles	0	6 50	6 50	7 35
432	"	Glendale	6	7 10	7 10	7 55
417	"	Bakersfield	169	11 52	11 52	1 10
287	"	Fresno	277	2 00	2 00	4 10
167	"	Merced	332	2 57	2 57	5 19
19	"	Stockton	399	4 45	4 45	6 55
42	Ar	Sacramento	447	6 00	6 00	8 10

Elev	Mis.	No. 224
8	Lv	San Francisco Mkt. St.
11	Lv	Oakland Pier
9	"	Oakland (16th St.) Δ
16	"	Berkeley
7	"	Martinez
51	"	Davis
42	Ar	Sacramento Δ

Elev	Mis.	No. 202
42	Lv	Sacramento
168	"	Roseville
173	"	Lincoln
122	"	Sheridan
97	"	Wheatland
79	"	Marysville
87	"	Live Oak
103	"	Gridley
104	"	Biggs
118	"	Richvale
132	"	Nelson
171	"	Durham
200	"	Chico
218	"	Vina
234	"	Los Molinos
231	"	Tehama
251	Ar	Gerber

SISKIYOU LINE SERVICE

Dunsmuir - Ashland - Medford - Grants Pass - Eugene
Pacific Greyhound Lines Bus (Daily)
Rail Tickets Honored

Elev	Mis.	S.P. Stations No. 10	PGL Stations No. 12	PGL Stations No. 10	PGL Stations No. 12
8	Lv	San Francisco Mkt. St.	0	7 30	4 00
2286	Ar	Dunsmuir	293	1 52	10 50
2286	Lv	Dunsmuir	0	2 05	▲ 1 56
2553	Lv	Mt. Shasta	14	2 26	
3449	Lv	Weed	27	2 45	2 47
2335	Lv	Yreka Inn	64	3 58	3 28
1869	Ar	Ashland	108	5 03	4 28
1869	Ar	Ashland	108	5 08	4 29
1370	Ar	Medford	121	5 34	▲ 5 25
1370	Ar	Medford	121	5 45	▲ 5 05
1081	Lv	Gold Hill	136	6 08	5 25
935	Ar	Grants Pass	153	▲ 6 35	5 53
935	Lv	Grants Pass	153		6 04
459	Ar	Roseburg	252		7 53
459	Lv	Roseburg	252		8 23
426	Ar	Eugene	326	10 50	▲ 8 35
426	Lv	Eugene	594		9 04
30	Ar	Portland, Ore.	718		11 25

SHASTA ROUTE

CONNECTIONS IN CALIFORNIA - OREGON - WASHINGTON

(A) PORTLAND, TACOMA, SEATTLE
Pooled trains operated jointly by the Great Northern,
Northern Pacific and Union Pacific (Daily)

STATIONS	Mls.	U.P.		G.N.		N.P.		U.P.	
		457	459	407	401	407	401	407	401
Lv Portland, Ore.	0	9 00	1 30	5 30	11 45				
Lv Vancouver, Wash.	9	9 21	1 49	5 49	12 09				
Lv Kelso-Longview	48	10 01	2 28	6 29	1 15				
Ar Chehalis	87	10 43	3 12	7 11	2 20				
Ar Centralia	91	10 53	3 23	7 21	2 30				
Ar East Olympia	110	11 16	3 46	7 44					
★ Ar Olympia	8	11 45		8 15					
Ar Tacoma, Wash.	145	12 01	4 31	8 29	4 10				
Ar Seattle (Union Sta.)	183	1 00		6 15					
Ar Seattle (King St. Sta.)	183		5 30	9 30					

STATIONS	Mls.	G.N.		N.P.		U.P.	
		460	408	458	402	460	402
Lv Seattle (King St. Sta.)	0	8 20	12 30				
Lv Seattle (Union Sta.)	0			5 00	11 45		
Lv Tacoma, Wash.	39	9 16	1 26	6 02	1 15		
★ Lv Olympia				1 30			
Lv East Olympia	74	9 58	2 08	6 47	7 29		
Lv Centralia	93	10 22	2 32	7 11	3 00		
Lv Chehalis	96	10 28	2 39	7 18	3 10		
Lv Kelso-Longview	136	11 14	3 24	8 04	4 20		
Ar Vancouver, Wash.	175	11 58	4 08	8 48	5 15		
Ar Portland, Ore.	183	12 20	4 30	9 15	5 45		

(B) PORTLAND, SPOKANE (Daily)

U.P.	SP&S	SP&S	SP&S-6	Mls.	STATIONS	SP&S	NP-SP	SP&S	U.P.
20	4	2	NP-6		1	1	3	3	19
9 30	9 45	3 00	8 30	0	Lv Portland Ar	7 15	8 20	6 00	5 30
6 30	6 10	10 25	6 50	377	Ar Spokane Lv	11 59	7 25	9 45	7 30

(Daily)
SEATTLE, VICTORIA, VANCOUVER

Mls.	G. N.			C. P. S. S.		
	358	360	362			
0	Lv Seattle	8 05	2 00	6 25	4 00	
96	Lv Bellingham	10 28	4 21	8 53		
81	Ar Victoria			9 15		
81	Lv Victoria			3 30	11 59	
164	Ar Vancouver	11 59	5 40	10 20	9 00	7 00

Mls.	G. N.			C. P. S. S.		
	357	359	361			
0	Lv Vancouver	8 00	1 00	6 30	9 15	11 59
83	Ar Victoria			2 30	7 00	
83	Lv Victoria			9 30		
	Lv Bellingham	9 41	2 30	8 00		
164	Ar Seattle	12 10	4 35	10 25	2 45	

PORTLAND, HUNTINGTON (Daily)

106	18	Mls.	(Union Pacific)	17	106
5 00	9 30	0	Lv Portland	Ar	5 30 7 30
7 18	10 54	63	Lv Hood River	Lv	3 45 6 01
6 50	11 40	84	Lv The Dalles	Lv	3 10 5 30
9 08	3 00	216	Lv Pendleton	Lv	11 05 3 10
11 10	5 35	290	Lv La Grande	Lv	8 40 1 05
12 10	6 45	342	Lv Baker	Lv	7 07 11 53
1 35	8 15	390	Ar Huntington (P.T.)	Lv	5 50 10 40

▲ 12 01▲ 9 30▲ 7 00 Lv Portland Ar▲ 7 50▲ 7 50▲ 5 30
▲ 10 02▲ 8 25▲ 3 40 Ar Walla Walla Lv▲ 10 15▲ 12 20▲ 7 30

All PM time in Dark-faced figures.
▲ Pacific Greyhound Bus. *Daily.
★ Bus Service between East Olympia and Olympia.
† On call taxi service between Crockett Station and Vallejo City Ticket Office, 401 York Street.
♠ Motor bus via Pendleton. c—Bus depot, 987 Pearl Street.
d—Monday, Wednesday, Friday.
e—Except Saturday, Sunday and Holidays.
f—Flag stop to receive or discharge passengers.
g—Tuesday, Thursday, Saturday. h—Saturday only.
i—Daily except Sunday and Holidays.
k—On call for one or more passengers.

HERTZ RAIL-AUTO TRAVEL PLAN

Enjoy the restfulness of train travel to your destination . . . then use a new automobile for as long as you want it. Hertz Rail-Auto Service available at many Southern Pacific Stations.

Ask any S.P. ticket agent for details.

(A) ALTURAS, KLAMATH FALLS
(P.G.L. Bus) (Daily)
(Rail Tickets Honored)

12 55	Lv Alturas	Ar	5 20
2 30	" Tule Lake	"	3 45
3 15	Ar Klamath Falls	Lv	3 00

(B) MEDFORD, KLAMATH FALLS
(P.G.L. Bus)

*12 30	Lv Medford	Ar	8 08
12 59	Lv Ashland	Lv	7 42
2 50	Ar Klamath Falls	Lv	* 5 50

(C) KLAMATH FALLS, THE DALLES
(Pacific Trailways) (Daily)
(Rail Tickets Not Honored)

4 20	7 50	Lv Klamath Falls	Ar	2 00	11 10
7 10	11 01	Ar Bend	Lv	10 50	8 20
7 20	11 30	Lv Bend	Ar	10 15	7 35
11 45	3 20	Ar The Dalles	Lv	6 30	4 05

(A) REDDING, SUMMIT CITY, SHASTA DAM
Shasta Dam Stages
Daily, except Sundays and Holidays

Lv Redding	8 25	9 45	11 45	1 45	3 45
Ar Summit City	8 50	10 10	12 10	2 10	4 10
Ar Shasta Dam		k10 20	k12 20	k 2 20	k 4 20
Lv Shasta Dam		k10 25	k12 25	k 2 25	k 4 25
Ar Summit City	7 56	10 31	12 31	2 31	4 31
Ar Redding	8 20	10 55	12 55	2 55	4 55

(B) MOUNT SHASTA, McCLOUD
McCloud River R. R. Co. (Bus)

Lv Mt. Shasta	*7 30	11 00	
Ar McCloud	8 00	11 30	
Lv McCloud	*9 30	11 45	e 4 00
Ar Mt. Shasta	10 00	12 15	4 30

(C) WILLIAMS-COLUSA TAXIS
(Rail Tickets Not Honored)
"On Call"

24 hour "on call" service available both ways. Phone Yellow Taxi, at Colusa G.L. 8-2345. Rates one way \$3.50 one to five persons.

KLAMATH FALLS, CRATER LAKE
(Pacific Trailways) (Daily)
Season—June 15 to Sept. 15

Lv Klamath Falls	8 00	Ar Crater Lake	9 30
Lv Klamath Falls	4 45	Ar Crater Lake	6 15
Lv Crater Lake	12 30	Ar Klamath Falls	2 00
Lv Crater Lake	6 30	Ar Klamath Falls	8 00
Lv Medford	7 30	Ar Crater Lake	9 30
Lv Crater Lake	4 00	Ar Medford	6 00

Klamath Falls—Crater Lake Round Trip \$6.00 plus tax.
Medford—Crater Lake Round Trip \$7.20 plus tax.

(A) PORTLAND, EUGENE, COOS BAY, COQUILLE

No. 19	No. 11	No. 9	No. 10	No. 12	No. 20
*10 15	* 4 45	* 7 45	Lv Portland	Ar	11 25
1 35	7 09	10 09	Ar Eugene	Lv	* 9 04
					8 15
					5 55
					* 4 10

(B) VIA ROSEBURG
(P.G.L. Bus) (Daily)
(Rail Tickets Honored)

▲ 10 45	Lv Eugene	Ar	▲ 12 08
▲ 1 10	Ar Roseburg	Lv	▲ 10 35
▲ 3 05	Lv Roseburg	Ar	▲ 10 35
4 56	Lv Myrtle Point	Lv	8 40
5 10	Ar Coquille	Lv	8 20
▲ 5 46	Ar Coos Bay	Lv	7 50

(C) VIA DRAIN AND REDSPORT
(P.G.L. Bus) (Daily)
(Rail Tickets Honored)

▲ 3 55	▲ 3 20	Lv Eugene	Ar	▲ 12 25	▲ 9 28
5 05	4 35	Lv Drain	Lv	11 33	8 14
6 27	5 55	Lv Redsport	Lv	9 55	7 02
7 01	6 27	Lv North Bend	Lv	9 08	6 26
7 08	6 34	Ar Coos Bay	Lv	9 00	6 20
▲ 8 16	7 17	Ar Coquille	Lv	▲ 8 18	▲ 5 21

REDDING, WEAVERVILLE, EUREKA
Eureka-Redding Stages

* 12 01	Lv Redding	Ar	4 30
1 30	Ar Weaverville	Lv	3 10
1 40	Lv Weaverville	Ar	3 00
6 20	Ar Eureka (127)	Lv	▲ 10 20

(Rail Tickets Honored)

(A) CROCKETT, NAPA VALLEY, SONOMA VALLEY, GLEN ELLEN, SANTA ROSA (Daily)

0	Lv Crockett (S.P.Sta.)	†	Ar		
5	Ar Vallejo (P.G.L. Depot)	Lv			
▲ 7 15	5	Lv Vallejo (P.G.L. Depot)	Ar	▲ 7 10	
7 40	18	Lv Imola (Napa State Hospital)	Ar	6 45	
7 45	20	Ar Napa	Lv	6 40	
7 45	20	Lv Napa	Ar	6 30	
8 10	35	" Sonoma	"	6 05	
8 17	38	" Boyes Springs	"	5 56	
8 33	42	" Eldridge (Sonoma State Home)	"	5 46	
8 35	43	" Glen Ellen	"	5 42	
▲ 9 05	59	Ar Santa Rosa (5th & B Sts.)	Lv	▲ 5 10	

(B) CROCKETT, ST. HELENA, CALISTOGA

0	Lv Crockett (S.P.Sta.)	†	Ar		
5	Ar Vallejo (P.G.L. Depot)	Lv			
▲ 4 15	▲ 10 15	5	Lv Vallejo (P.G.L. Depot)	Ar	▲ 10 10
4 45	10 45	20	Ar Napa	Lv	9 40
4 50	10 50	20	Lv Napa	Ar	9 35
5 08	11 08	29	" Yountville	"	9 16
5 25	11 25	39	" St. Helena	"	8 57
▲ 5 45	▲ 11 45	48	Ar Calistoga	Lv	▲ 8 40

COAST LINE

SAN FRANCISCO - SANTA BARBARA - LOS ANGELES - DEL MONTE - MONTEREY - PACIFIC GROVE

NORTHBOUND	99	99-151	95	75-73	75	91
Lv Los Angeles (Un. Sta.)	* 8 15	* 8 15	* 7 45	* 9 00	* 9 00	* 1 01
Lv Glendale (A)	8 35	8 35	8 05	9 20	9 20	1 26
Lv Ventura			9 31	10 46	10 46	4 10
Lv Santa Barbara	10 30	10 30	10 15	11 34	11 34	5 45
Lv San Luis Obispo	12 51	12 51	12 45	2 15	2 15	9 35
Lv Salinas	3 34	3 34	3 51	5 15	5 15	1 56
Lv Watsonville Junction			4 22	5 48	5 48	2 39
Ar San Jose	4 53	4 53	5 22	6 55	6 55	3 56
Lv San Jose	u5 10	u5 10	i 5 45	x 7 20		
Ar Fruitvale	6 00	6 00	i 7 11	8 18		
Ar Oakland, Jack London Sq.	6 12	6 12	i 7 26	8 30		
Ar Oakland Pier	6 25	6 25		8 45		
Ar San Francisco (Mkt. St.)				9 10		
Lv San Jose	5 05	5 15	5 35	7 13	4 20	
Ar Palo Alto		5 42	5 56	7 39	4 39	
Ar Burlingame		6 12	6 10	7 59	4 59	
Ar San Francisco (3rd St.)	6 00	6 45	6 45	8 30	6 30	
Santa Fe Ry.	71	73	75	77	79	81
Lv San Diego	6 30	9 00	11 15	3 30	6 00	9 30
Ar Los Angeles	9 00	11 30	1 45	6 05	8 30	12 30

Please Reserve Seats in Advance on the "COAST" and "OAKLAND DAYLIGHTS" "STARLIGHT" and "LARK"

NOTE A—SPECIAL SERVICE CHARGE

The Service Charge is \$1.00 (plus Federal Tax) for each chair car seat occupied by adult, or child of any age, between San Francisco or Oakland and Los Angeles; proportionate charges to and from intermediate points. (Service Charge Tickets sold in advance will not be redeemable unless space reserved is released for resale not later than the day before departure of train. (Service Charge Tickets sold on day of departure will not be redeemable unless space reserved is released at least three (3) hours prior to departure of train.)

SOUTHBOUND	98	110-98	94	74-76	76	90
Lv San Francisco (3rd St.)	* 8 15	* 7 05	* 7 45		* 9 00	* 12 20
Lv Burlingame		7 35	8 10		9 23	1 21
Lv Palo Alto		8 08	8 27		9 42	
Ar San Jose	9 06	8 40	8 49		10 03	1 50
Lv San Francisco (Mkt. St.)					28 00	
Lv Oakland Pier	y 7 25	y 7 25			8 30	
Lv Oakland, Jack London Sq.	7 38	7 38	i 7 00		8 43	
Lv Fruitvale	7 47	7 47	i 7 15		8 52	
Ar San Jose	8 50	8 50	i 8 45		9 50	
Lv San Jose	9 18	9 18	8 56	10 15	10 15	2 20
Lv Watsonville Junction			10 04	11 27	11 27	4 15
Lv Salinas	10 38	10 38	10 32	11 58	11 58	5 15
Lv San Luis Obispo	1 28	1 28	1 37	3 30	3 30	9 27
Ar Santa Barbara	3 41	3 41	4 00	5 58	5 58	12 50
Ar Ventura			4 51	6 48	6 48	2 04
Ar Glendale (k)	5 42	5 42	6 25	8 10	8 10	4 10
Ar Los Angeles (Un. Sta.)	6 00	6 00	6 45	8 30	8 30	4 30
Santa Fe Ry.	70	72	74	76	78	80
Lv Los Angeles	7 45	10 00	1 00	5 30	8 00	11 30
Ar San Diego	10 15	12 45	3 30	8 00	10 30	2 45

No. 95 STARLIGHT (STREAMLINED). DAILY.
Streamlined Air-Conditioned Train. Please reserve seats in advance. Special service charge applicable in chair cars—See Note A above. Porter service. Radio. Pillow service available at nominal charge.
Chair Cars, Tavern-Snack Car (open all night). Tickets Honored: Ask Agents.
Baggage: No checked service to or from San Luis Obispo.

No. 99 COAST AND OAKLAND DAYLIGHTS.
Daily STREAMLINED Air-Conditioned Trains.
Streamlined Air-Conditioned Train. Please reserve seats in advance. Special service charge applicable in chair cars—See Note A above. Passenger Agent and Porter service. Radio. Chair Cars, Coffee Shop Car, Tavern Car, Parlor Car with one Drawing Room and Parlor-Observation Car (Railroad owned) Los Angeles to San Francisco.
Chair Car, Los Angeles to San Francisco. (Car P-16 on train 151 from San Jose to San Francisco).
Chair Cars, Los Angeles to Oakland. (Cars O-13 on train 255 from San Jose to Oakland).
Tickets Honored: Ask Agent. Baggage: No checked service to or from San Luis Obispo.

No. 94 STARLIGHT (STREAMLINED). DAILY.
Streamlined Air-Conditioned Train. Please reserve seats in advance. Special service charge applicable in chair cars—See Note A above. Porter service. Radio. Pillow service available at nominal charge.
Chair Cars, Tavern-Snack Car (open all night). Tickets Honored: Ask Agents.
Baggage: No checked service to or from San Luis Obispo.

No. 98 COAST AND OAKLAND DAYLIGHTS.
Daily STREAMLINED Air-Conditioned Trains.
Streamlined Air-Conditioned Train. Please reserve seats in advance. Special service charge applicable in chair cars—See Note A above. Passenger Agent and Porter service. Radio. Chair Cars, Coffee Shop Car, Tavern Car, Parlor Car with one Drawing Room and Parlor-Observation Car (Railroad owned) San Francisco to Los Angeles.
Chair Car, San Francisco to Los Angeles. (Car P-16 on train 110 from San Francisco to San Jose).
Chair Cars, Oakland to Los Angeles. (Cars O-13 on train 250 from Oakland to San Jose).
Tickets Honored: Ask Agent. Baggage: No checked service to or from San Luis Obispo.

No. 91 DAILY.
Coaches: Los Angeles to San Francisco. No meal service.

No. 75 LARK (STREAMLINED). DAILY.
Public Telephone.
Full Lounge Car: ★ Los Angeles to San Francisco. (For Pullman Passengers).
Standard Sleepers: ★ Los Angeles to San Francisco. (Drawing-Rooms, Compartments, Bedrooms, Roomettes).
Dining Car: ★ (For Dinner and Breakfast). (For Pullman Passengers).
Snack-Lounge Car: ★ Los Angeles to San Francisco. (For Chair Car Passengers).
Chair Cars: ★ Los Angeles to San Francisco. Please reserve seats in advance. Special service charge applicable in chair cars. See Note A above.
Baggage: No checked service to or from Glendale, Ventura, Santa Barbara, San Luis Obispo, Palo Alto or Burlingame.
Tickets Honored: Ask Agents.

No. 75-73 OAKLAND LARK (STREAMLINED). DAILY.
Standard Sleeper: ★ Los Angeles to Oakland Pier. (Bedrooms, Roomettes, Drawing-Room, Compartment).
Buffet-Lounge Sleeper: ★ Los Angeles to Oakland Pier. (Evening Buffet and Breakfast Service).
Coach: San Jose to Oakland Pier. Tickets Honored: Ask Agents. Baggage: See Train 75.

No. 90 DAILY.
Coaches: San Francisco to Los Angeles. No meal service.

No. 76 LARK (STREAMLINED). DAILY.
Public Telephone.
Full Lounge Car: ★ San Francisco to Los Angeles. (For Pullman Passengers).
Standard Sleepers: ★ San Francisco to Los Angeles. (Drawing-Rooms, Compartments, Bedrooms, Roomettes).
Dining Car: ★ (For Dinner and Breakfast). (For Pullman Passengers).
Snack-Lounge Car: ★ San Francisco to Los Angeles. (For Chair Car Passengers).
Chair Cars: ★ San Francisco to Los Angeles. Please reserve seats in advance. Special service charge applicable in chair cars. See Note A above.
Baggage: No checked service to or from Glendale, Ventura, Santa Barbara, San Luis Obispo, Palo Alto or Burlingame.
Tickets Honored: Ask Agents.

No. 74-76 OAKLAND LARK (STREAMLINED). DAILY.
Standard Sleeper: ★ Oakland Pier to Los Angeles. (Bedrooms, Roomettes, Drawing-Room, Compartment).
Buffet-Lounge Sleeper: ★ Oakland Pier to Los Angeles. (Evening Buffet and Breakfast Service).
Coach: Oakland Pier to San Jose only. Tickets Honored: Ask Agents. Baggage: See Train 76.

San Francisco, San Jose, Del Monte, Pacific Grove
No. 78 Coaches and Smoker: ★ Parlor-Buffet Car: (Railroad Owned.) No. 77. San Francisco and Pacific Grove

Los Angeles, Santa Barbara, Del Monte, Monterey, Pacific Grove

READ DOWN				READ UP			
Starlight 94 & Bus	Del Monte 78	Daylight 98 & Bus	Mis. Via R.R.	Del Monte 77	Bus & Daylight 99		
* 7 45	* 7 45	* 4 00	* 8 15	0	6 00	6 00	
8 10	8 10	4 21	16	10 05			
8 27	8 27	4 37	30	9 44			
8 56	8 56	5 06	47	9 18	4 53	4 53	
10 04	10 04	6 12	97	8 17			
		6 25	107	7 59			
			107	▲ 7 32			
10 32	10 32		114	▲ 7 18	3 34	3 34	
10 45	n		114		▲ 3 30		
	f 6 40	10 45	115	f 7 42			
	f 6 50		119	d 7 30			
	f 6 54		121	f 7 27			
11 32	6 57	11 32	122	* 7 25	▲ 2 42		
11 45	7 30	11 45	124	* 7 15	▲ 2 20		

READ DOWN				READ UP			
Lark 75 & Bus	Starlight 95 & Bus	Daylight 99 & Bus	Mis.	Bus & Starlight 94	Bus & Daylight 76	Bus & Daylight 98	
* 9 00	* 7 45	* 8 15	0	6 45	8 30	6 00	
9 20	8 05	8 35	6	6 25	8 10	5 42	
10 25	9 11		66	5 07	7 01		
10 46	9 31		76	4 51	6 48		
11 34	10 15	10 30	103	4 00	5 58	3 41	
2 15	12 45	12 51	222	1 37	3 30	1 28	
5 15	3 51	3 34	356	10 32	11 58	10 38	
n	▲ 5 50	▲ 3 45	356	10 20	11 35	10 26	
n			362				
n			366				
n			375				
▲ 6 37	▲ 6 37	▲ 4 37	377	▲ 9 37	10 47	▲ 9 38	
▲ 6 50	▲ 6 50	▲ 4 50	380	▲ 9 10	10 25	▲ 9 10	
			382				

All PM time in dark face figures.
★—Regularly assigned cars are air-conditioned.
*—Daily. #—Union Station. ▲—Pacific Greyhound Bus.
†—Rail Tickets also honored on Bay Rapid Transit Co. Bus between Monterey and Pacific Grove.
—Stops on flag to entrain pay passengers for Santa Barbara or beyond; also detrain from San Jose or beyond.
b—Daily except Sundays and Holidays.
c—Stops on flag to entrain pay passengers for Watsonville Jct., or beyond.
d—Stops daily except Sunday.
f—Flag stop to entrain or detrain passengers.
g—Stops daily except Sundays and Holidays and flag stop on Sundays and Holidays.
h—Stops on flag to entrain pay passengers for Gilroy or beyond.
i—Peerless Stage. j—Oakland, 20th & San Pablo.
k—Gateway to Hollywood, Beverly Hills, Santa Monica and Pasadena. Taxi service available.
m—Stops on flag to entrain pay passengers for San Jose or beyond; also detrain from Santa Barbara or beyond.
n—Frequent Pacific Greyhound Bus Service between Salinas (P.G.L. Station) Seaside and Fort Ord. Rail tickets honored.
w—Train No. 255. x—Train No. 73.
y—Train No. 250. z—Train No. 94.

SAN JOAQUIN VALLEY LINE

SAN FRANCISCO - OAKLAND - BERKELEY - FRESNO - BAKERSFIELD - LOS ANGELES • PORTLAND - DUNSMUIR - LOS ANGELES

NORTHBOUND					SOUTHBOUND								
	51 Daily	51-53 Daily	57 Daily	59 Daily		52 Daily	54-52 Daily	58 Daily	60 Daily				
Lv Los Angeles (Un. Sta.)	6 50	6 50	6 10	7 35	Lv San Francisco (Mkt. St.)	7 30	8 00				
Lv Glendale (a)	7 10	7 10	6 30	7 55	Lv Oakland Pier (Ferry)	8 10	9 10				
Lv Bakersfield	11 52	11 52	11 47	1 10	Lv Oakland (16th St.)	8 18	9 19				
Lv Tulare	1 01	1 01	1 00	2 36	Lv Berkeley	8 26	9 28				
Lv Fresno	2 09	2 00	2 20	4 10	Lv Richmond	8 35	9 40				
Lv Madera	2 23	2 23	b	4 37	Lv Martinez	9 13	10 23				
Lv Merced	2 57	2 57	b	5 19	Ar Tracy	10 05	11 30				
Lv Modesto	3 40	3 40	b	6 08	Lv Tracy	10 09	11 40				
Lv Lathrop			b										
Ar Stockton		4 45		6 55	Lv Sacramento		8 20		7 45				
Ar Lodi		5 05		7 15	Lv Lodi		9 11		8 30				
Ar Sacramento		6 00		8 10	Lv Stockton		9 35		8 55				
Ar Tracy	4 25		4 45		Lv Lathrop	10 23	10 23	b					
Lv Tracy	4 30		4 55		Lv Modesto	10 57	10 57	b	9 40				
Lv Martinez	5 32		5 58		Lv Merced	11 40	11 40	b	10 28				
Ar Richmond	6 09		6 37		Lv Madera	12 13	12 13	b	11 08				
Ar Berkeley	6 23		6 52		Ar Fresno	12 40	12 40	2 20	11 45				
Ar Oakland (16th St.)	6 37		7 03		Ar Tulare	1 42	1 42	3 48	1 00				
Ar Oakland Pier (Ferry)	6 50		7 15		Ar Bakersfield	2 51	2 51	4 57	2 10				
Ar San Francisco (Mkt. St.)	7 30		8 00		Ar Glendale (a)	7 37	7 37	10 30	7 23				
					Ar Los Angeles (Un. Sta.)	7 55	7 55	10 50	7 45				
Santa Fe Ry.	71	73	75	77	79	81	Santa Fe Ry.	70	72	74	76	78	80
Lv San Diego	6 30	9 00	11 15	3 30	6 00	9 30	Lv Los Angeles (Un. Sta.)	7 45	10 00	1 00	5 30	8 00	11 30
Ar Los Angeles (Un. Sta.)	9 00	11 30	1 45	6 05	8 30	12 30	Ar San Diego	10 15	12 45	3 30	8 00	10 30	2 45

Please Reserve Seats in Advance on the "SAN JOAQUIN" and "SACRAMENTO DAYLIGHTS"

NOTE A—
SPECIAL SERVICE CHARGE

The Service Charge is \$1.00 (plus Federal Tax) for each chair car seat occupied by adult, or child of any age, between San Francisco and Los Angeles and Sacramento and Los Angeles: proportionate charges to and from intermediate points. (Service Charge Tickets sold in advance will not be redeemable unless space reserved is released for resale not later than the day before departure of train. Service Charge Tickets sold on day of departure will not be redeemable unless space reserved is released at least three (3) hours prior to departure of train.)

Bus and Taxi Service available between Southern Pacific Ferry Station and Third Street Station, San Francisco. Approximate distance 1¼ miles.

PASSENGERS USE FERRY STEAMER BETWEEN SAN FRANCISCO AND OAKLAND PIER.

NO. 51-53 SAN JOAQUIN AND SACRAMENTO DAYLIGHTS.
Daily STREAMLINED Air Conditioned Trains.
Streamlined Air-Conditioned Train. Please reserve seats in advance. Special service charge applicable in chair cars—See Note A above. Passenger Agent and Porter service. Radio. Chair Cars, Coffee Shop Car, Dome Lounge Car. Los Angeles to San Francisco. Chair Cars. Los Angeles to Sacramento. Tickets Honored: Ask Agents.

NO. 57 OWL. DAILY.
Full Lounge Car: ★ Los Angeles to San Francisco.
Standard Sleeping Cars: ★ Los Angeles to San Francisco. (Sections, BRs., Roomettes.)
Chair Cars: Los Angeles to San Francisco. Pillow service available at nominal charge.
Hamburger Grill Lounge Car: ★ Los Angeles to San Francisco. Tickets Honored: Ask Agents.

NO. 59 WEST COAST. DAILY.
Snack Lounge Car: ★ Los Angeles to Sacramento.
Standard Sleeping Cars: ★ Los Angeles to Sacramento. (Sections, Bedrooms, Roomettes.)
Chair Cars: ★ Los Angeles to Sacramento. Pillow service available at nominal charge.
News Agent Service. Tickets Honored: Ask Agents.

NO. 52-54 SAN JOAQUIN AND SACRAMENTO DAYLIGHTS.
Daily STREAMLINED Air Conditioned Trains.
Streamlined Air-Conditioned Train. Please reserve seats in advance. Special service charge applicable in chair cars—See Note A above. Passenger Agent and Porter service. Radio. Chair Cars, Coffee Shop Car, Dome Lounge Car. San Francisco to Los Angeles. Chair Cars. Sacramento to Los Angeles. Tickets Honored: Ask Agents.

NO. 58 OWL. DAILY.
Full Lounge Car: ★ San Francisco to Los Angeles.
Standard Sleeping Cars: ★ San Francisco to Los Angeles. (Sections, BRs., Roomettes.)
Chair Cars: San Francisco to Los Angeles. Pillow service available at nominal charge.
Hamburger Grill Lounge Car: ★ San Francisco to Los Angeles. Tickets Honored: Ask Agents.

NO. 60 WEST COAST. DAILY.
Snack Lounge Car: ★ Sacramento to Los Angeles.
Standard Sleeping Cars: ★ Sacramento to Los Angeles. (Sections, Bedrooms, Roomettes.)
Chair Cars: ★ Sacramento to Los Angeles. Pillow service available at nominal charge.
News Agent Service. Tickets Honored: Ask Agents.

All PM time in Dark faced figures.
*—Daily.
★—Regularly assigned cars are air-conditioned.
a—Gateway to Hollywood, Beverly Hills, Santa Monica and Pasadena. Taxi service available.
b—Via Los Banos.
c—Passengers from No. 57 will be handled between Oakland Pier and San Francisco Ferry by bus.

If S.P. schedules do not entirely meet your travel requirements, S.P. tickets will be honored on Pacific Greyhound Buses between certain points in San Joaquin Valley. Ask any Southern Pacific Agent.

Ride the Dome Lounge on the San Joaquin Daylight
... through the bountiful San Joaquin Valley and over the Tehachapi Mountains between San Francisco and Los Angeles