

Page No.	Page No.	Page No.	Page No.
Pecos River, Tex. 5b, 10a	Sabinal, Tex. 5b, 10a	Taft, Tex. 12d	Van Raub, Tex. 5d
Pensacola, Fla. 4g	Sacul, Tex. 11t	Tallahassee, Fla. 4g	Van Vleck, Tex. 12c
Pettus, Tex. 12c	Safford, Ariz. 13e	Tanglewood, Tex. 11r	Vaughn, N. M. 5c, 10c
Pheasant, Tex. 12c	Salix, La. 5a, 10b	Taylor, N. M. 13h	Viaduct, Tex. 5b, 10a
Philadelphia, Pa. 2b	Salt Mine, La. 11a	Teacote, Mex. 14a	Victoria, Tex. 11v, 12b, 12e
Phoenix, Ariz. 6a, 7b, 13c	Salton, Calif. 6b, 7a	Tecolote, N. M. 5c, 10c	Village Mills, Tex. 11t
Piechao, Ariz. 6a, 7b	San Antonio, Ariz. 2a, 5a, 5b, 5d, 10a, 10b, 11p, 12a, 12b, 12e, 12g	Telfener, Tex. 12e	Vinton, La. 5a, 10b
Pierce, Tex. 12e	San Bernardino, Calif. 7e	Tempe, Ariz. 6a, 7b, 13c	Voth, Tex. 11t
Pima, Ariz. 13e	San Blas, Mex. 15	Temporal, N. M. 5c, 10c	Waco, Tex. 10e, 11r
Pintado, N. M. 5c, 10c	San Carlos, Ariz. 13e	Tenaha, Tex. 11k	Waelder, Tex. 5a, 10b, 11p, 12g
Piacedo, Tex. 11v	Sanderson, Tex. 5b, 10a	Terrell, Tex. 11d	Waggaman, La. 5a, 10b
Planeport, N. M. 5c, 10c	Sandia, Tex. 12e	Tesnus, Tex. 5b, 10a	Waller, Tex. 12g
Pledger, Tex. 12c	San Diego, Calif. 2a, 6b, 10a, 14a	Petilan, Mex. 15	Wallis, Tex. 12a
Podol, Tex. 12c	(Mkt. St.) Calif. 2a, 6d, 7a	Texas City, Junc., Tex. 12h	Waring, Tex. 5d
Port Allen, La. 11g	San Francisco, (3rd St.) Calif. 2a, 6c, 7a	Texarkana, Tex. 4d	Warren, Tex. 11t
Polvo, Tex. 5b, 10a	San Gabriel, Calif. 6b, 7a	Texhoma, Okla. 5c, 10c	Washington, D. C. 2b
Polvo, N. M. 6a, 7b	San Jose, Calif. 2a, 6c, 7a	Thatcher, Ariz. 13e	Washington, La. 11c
Pomona, Calif. 6b, 7a	San Juan, Ariz. 6a	Thermal, Calif. 6b, 7a	Watkins, Tex. 10a
Ponta, Tex. 11t	San Leon, Tex. 12h	Thornton, Tex. 12g	Watsonville, Calif. 6c, 7a
Port Barre, La. 11h	San Luis Obispo, Calif. 2a, 6c, 7a	Three Rivers, N. M. 5c, 10c	Watsonville Jct., Calif. 2a, 6c, 7a
Portland, Ore. 3h	San Pedro, Calif. 13b	Thurston, Tex. 5b, 10a	Waxahachie, Tex. 12g
Port Lavaca, Tex. 11v	San Simon, Ariz. 6a, 7b	Tijuana, Mex. 6b, 14a	Weimar, Tex. 5a, 10b
Poth, Tex. 12e	Santa Barbara, Calif. 2a, 6c, 7a	Timpson, Tex. 11k	Wellborn, Tex. 12g
Poufette, La. 11a	Santa Cruz, Calif. 6c, 7a	Toltec, Ariz. 6a, 7b	Wellton, Ariz. 2a, 6a, 7b
Poynor, Tex. 11t	Santa Rosa, N. M. 5c, 10c	Tombstone, Ariz. 13f	Welsh, La. 5a, 10b
Prairie View, Tex. 12g	Santa Rosa, Tex. 12e	Topeka, Kan. 5c, 10c	Wendell, Tex. 5b, 10a
Premont, Tex. 12c	San Ysidro, Calif. 7a, 14a	Torbert, Tex. 5b	Westhoff, Tex. 12b
Pueblo, Colo. 5c, 10c	Saspameo, Tex. 12e	Tornillo, Tex. 5b, 10a	West Point, Tex. 11r
Puente, Calif. 6b, 7a	Schriever, La. 5a, 10b	Torrance, N. M. 5c, 10c	Wharton, Tex. 11v
Pumpville, Tex. 5b, 10a	Schulenberg, Tex. 5a, 10b	Torreón, Mex. 4c	Whitton, Tex. 12b, 12c, 12e
Q	Scott, La. 5a, 10b	Travis, Tex. 11r	Willcox, Ariz. 6a, 7b
Queretaro, Mex. 4c	Seabrook, Tex. 12h	Travick, Tex. 11t	Winchester, Tex. 11r
Quili, Tex. 5b, 10a	Seagoville, Tex. 11t	Trinidad, Colo. 5c, 10c	Winkle, N. M. 5c, 10c
Quilla, Mex. 15	Seco, Tex. 5b, 10a	Tubac, Ariz. 13r	Winkelman, Ariz. 5c, 10c
Quinlan, Tex. 11d	Seguin, Tex. 5a, 10b, 11p, 12g	Tucson, Ariz. 2a, 6a, 7b, 13r	Woodrille, Tex. 11t
R	Segura, La. 5a, 10b	Tucumcari, N. M. 5c, 10c, 13h	Wortham, Tex. 12g
Raceland Jct., La. 5a, 10b	Seeley, Calif. 14a	Tularosa, N. M. 5c, 10c	Wotten, N. M. 13v
Ramos, La. 5a, 10b	Sentinel, Ariz. 2a, 6a, 7b	Turquoise, N. M. 5c, 10c	Wymola, Ariz. 6a, 7b
Randolph Field, Tex. 5a, 10b, 11p	Separ, N. M. 6a, 7b	Tuscaloosa, Ala. 4n	Y
Rayne, La. 5a, 10b	Shepherd, Tex. 11k	Tynan, Tex. 12e	Yoakum, Tex. 11r, 12a
Raywood, Tex. 5a	Sheridan, Tex. 12a	U	Yorktown, Tex. 12a
Reagan, Tex. 10e	Sherman, Tex. 12g	Upland, Calif. 6b, 7a	Ysleta, Tex. 5b, 10a
Redlands, Calif. 6b, 7a, 7f	Shiner, Tex. 11r	Uvalde, Tex. 5b, 10a	Yucca, Tex. 5b, 10a
Redlands, (2nd St.) Calif. 7f	Shreveport, La. 11k	V	Yuma, Ariz. 2a, 6a, 6b, 7a, 7b, 11a, 13a, 14a
Red Rock, Ariz. 6a, 7b	Shumla, Tex. 5b, 10a	Vail, N. M. 6a, 7b	Z
Reklaw, Tex. 11t	Sierra Blanca, Tex. 5b, 10a	Valentine, Tex. 5b, 10a	Zavalla, Tex. 11t
Riceville, La. 11a	Silver City, N. M. 13c	Valmont, N. M. 5c, 10c	(Form 6)
Richmond, Tex. 5a, 10b, 12e	Simmons, N. M. 5c, 10c	Van Alstyne, Tex. 12g	
Rillito, Ariz. 6a, 7b	Simonton, Tex. 12a		
Riverside, Calif. 7d	Sinton, Tex. 11r, 11u		
Roanoke, La. 5a, 10b	Skidmore, Tex. 12d, 12e		
Robsart, N. M. 5c, 10c	Solana, N. M. 13h		
Rockdale, Tex. 11r	Solomon, Ariz. 13e		
Rock Island, Tex. 12a	South Fontana, Calif. 6b, 7a		
Rockland, Tex. 11t	Southton, Tex. 12e		
Rockport, Tex. 10f	Spoftord, Tex. 5b, 10a, 10h		
Rockwood, Calif. 6b, 7a	Stafford, Tex. 11r		
Rodeo, N. M. 6a, 7b	Standart, Tex. 5b, 10a		
Rosebud, Tex. 11r	Steins, N. M. 6a, 7b		
Rosenberg, Tex. 5a, 5b, 10b, 11v, 12b, 12c, 12e	Stockdale, Tex. 12b		
Rosenfeld, Tex. 5b, 10a	Sudduth, Tex. 11n		
Rosser, Tex. 11d	Sugarland, Tex. 5a, 10b, 12e		
Roswell, N. M. 13v	Sulphur, La. 5a, 10b		
Rousseau, La. 5a, 10b	Sunset, La. 11c		
Roy, N. M. 13h	Superior, Ariz. 13m		
Runge, Tex. 12a	Sweet Home, Tex. 12a		
Russia, N. M. 13v	Sweetwater, Tex. 4d		
Ruth, La. 11h			
Ryan, Tex. 5b, 10a			
Rynella, La. 11a			
S			
St. Louis, Mo. 2a, 4d, 5c, 10c, 12a, 14a			
St. Martinsville, La. 11h			
St. Paul, Minn. 5c, 10c			

Southern Pacific

TIME TABLES

SUBJECT TO CHANGE WITHOUT NOTICE



Sunset Route

SUNSET LIMITED
COMPLETELY AIR-CONDITIONED
to California

Sunset Limited, crack train on our Sunset Route to Los Angeles, is completely air-conditioned—coaches, chair cars, tourist and standard sleeping cars, dining and lounge cars. The through Pullman to San Diego is also air-conditioned.

Air-conditioned Trains. Air-conditioned cars have been assigned to regular sections of trains as shown in this folder, and every effort will be made to provide such cars, as specified. However, the right is reserved to operate non-air-conditioned cars in such trains as required by volume of traffic or operating contingency.

WHEN ORDERING MERCHANDISE, SPECIFY "RAILWAY EXPRESS SERVICE"
 Almost invariably the customer pays the cost of transportation.

The person or firm ordering the goods therefore is vitally concerned in the cost of transportation and the character of service given. A comparison of rates and service is well worthwhile.

Express charges include pick-up and delivery in all principal cities and towns, within prescribed limits; free liability up to \$50.00 on each shipment of 100 pounds or less, and at the same ratio on shipments in excess of 100 pounds.

If you specify "Ship by Railway Express" on your orders, you are sure of complete, thorough service by one dependable company.

The Railway Express Agency is represented at practically every station along the lines of the Southern Pacific.

For further particulars apply to your local Railway Express agent.

RAILWAY EXPRESS AGENCY
 (Incorporated)

TELEGRAPH SERVICE

For the convenience of our passengers, Western Union Telegraph service is available from many stations. If you wish, you may hand your message to train conductor or porter who will see that it is transmitted from the next station at which train stops.

Sunset Route

SAN FRANCISCO, LOS ANGELES, SAN DIEGO, SOUTHERN ARIZONA, EL PASO, NEW ORLEANS

THROUGH CAR SERVICE
Train 1—Train 2
SUNSET LIMITED
LOS ANGELES AND NEW ORLEANS

ALL CARS AIR-CONDITIONED

(A) EASTBOUND
SAN FRANCISCO TO LOS ANGELES

Lv	Station	No. 78 Daily				No. 76 Daily			
		Mo	Tu	We	Th	Mo	Tu	We	Th
Lv San Francisco (3rd St.)	6 45	Mo	Lounge	8 30	Mo	Lounge	8 30	Mo	Lounge
Lv Palo Alto, Cal.	7 30	Mo	Car	9 13	Mo	Standard	9 13	Mo	Standard
Lv San Jose, Cal.	7 58	Mo	Stand-	9 40	Mo	Single Bed-	9 40	Mo	Single Bed-
Lv Watsonville Junc., Cal.	8 20	Mo	dard	10 59	Mo	room,	10 59	Mo	room,
Lv San Luis Obispo, Cal.	9 20	Mo	Tourist	2 53	Tu	Private	2 53	Tu	Private
Lv Santa Barbara, Cal.	15 15	Tu	Dining	6 05	Tu	Section	6 05	Tu	Section
Lv Glendale, Cal.	18 45	Tu	Car	8 33	Tu	Sleeper,	8 33	Tu	Sleeper,
Lv Los Angeles, Cal.	8 15	Tu	Coaches	9 00	Tu	Dining Car	9 00	Tu	Dining Car

No. 2—SUNSET LIMITED—No Extra Fare
LOS ANGELES TO NEW ORLEANS

Lv	Station	S.D.&A.E.				S.P.T.			
		Mo	Tu	We	Th	Mo	Tu	We	Th
Lv Los Angeles, Cal. (No. 2)	8 00	Tu	We	Th	Fr	Sa	Su	Mo	Tu
Lv Alhambra (Pasadena T19)	8 28	Tu	We	Th	Fr	Sa	Su	Mo	Tu
Lv Colton, Cal.	9 55	Tu	We	Th	Fr	Sa	Su	Mo	Tu
Lv Beaumont, Cal.	10 43	Tu	We	Th	Fr	Sa	Su	Mo	Tu
Lv Indio, Cal.	12 01	We	Th	Fr	Sa	Su	Mo	Tu	Tu
Lv Yuma, Ariz. (P.T.)	2 45	We	Th	Fr	Sa	Su	Mo	Tu	Tu

LOS ANGELES TO SAN FRANCISCO

Lv	Station	No. 71 Daily				No. 77 Daily			
		Mo	Tu	We	Th	Mo	Tu	We	Th
Lv Los Angeles, Cal.	8 00	Th	Fr	Sa	Su	6 45	Th	Lounge	6 45
Lv Glendale, Cal.	8 26	Th	Fr	Sa	Su	7 11	Th	Car,	7 11
Lv Santa Barbara, Cal.	11 00	Th	Fr	Sa	Su	9 45	Th	Stand-	9 45
Lv San Luis Obispo, Cal.	2 10	Th	Fr	Sa	Su	12 57	Fr	dard	12 57
Lv Watsonville Jct., Cal.	6 12	Th	Fr	Sa	Su	5 15	Fr	Tourist,	6 12
Lv San Jose, Cal.	7 35	Th	Fr	Sa	Su	6 52	Fr	Dining	7 35
Lv Palo Alto, Cal.	8 02	Th	Fr	Sa	Su	e7 22	Fr	Car,	8 02
Lv Burlingame, Cal.	8 20	Th	Fr	Sa	Su	e7 41	Fr	Coaches	8 20
Lv San Francisco (3rd St.)	8 45	Th	Fr	Sa	Su	8 10	Fr		8 45

(B) NEW ORLEANS—WASHINGTON—NEW YORK

Lv	Station	L.&N.				B. & O.			
		Mo	Tu	We	Th	Mo	Tu	We	Th
Lv New Orleans, La.	9 00	Th	Fr	Sa	Su	8 20	Th	Fr	Sa
Lv Birmingham, Ala.	8 45	Th	Fr	Sa	Su	7 31	Th	Fr	Sa
Lv Louisville, Ky.	7 25	Fr	Sa	Su	Mo	5 00	Fr	Sa	Su
Lv Cincinnati, O. (C.T.)	10 55	Fr	Sa	Su	Mo	8 20	Fr	Sa	Su

WESTBOUND
No. 1—SUNSET LIMITED—No Extra Fare
NEW ORLEANS TO LOS ANGELES

Lv	Station	I.C.				M. K. & T.			
		Mo	Tu	We	Th	Mo	Tu	We	Th
Lv New Orleans, La. (C.T.)	10 40	Mo	Tu	We	Th	Fr	Sa	Su	Mo
Lv Houston, Tex.	9 20	Tu	We	Th	Fr	Sa	Su	Mo	Tu
Lv San Antonio, Tex.	2 45	Tu	We	Th	Fr	Sa	Su	Mo	Tu
Lv St. Louis, Mo.	11 43	Su	Mo	Tu	We	Th	Fr	Sa	Su
Lv Dallas, Tex.	11 00	Mo	Tu	We	Th	Fr	Sa	Su	Mo
Lv San Antonio, Tex.	7 00	Tu	We	Th	Fr	Sa	Su	Mo	Tu
Lv San Antonio, Tex. (Sou. Pac.)	3 10	Tu	We	Th	Fr	Sa	Su	Mo	Tu
Lv El Paso, Tex. (M.T.)	8 35	We	Th	Fr	Sa	Su	Mo	Tu	Tu
Lv Chicago, Ill.	6 05	Su	Mo	Tu	We	Th	Fr	Sa	Su
Lv New Orleans, La.	7 50	Mo	Tu	We	Th	Fr	Sa	Su	Su
Lv St. Louis, Mo.	6 30	Mo	Tu	We	Th	Fr	Sa	Su	Su
Lv Memphis, Tenn.	10 50	Tu	We	Th	Fr	Sa	Su	Mo	Tu
Lv Dallas, Tex.	12 20	Tu	We	Th	Fr	Sa	Su	Mo	Tu
Lv Fort Worth, Tex.	1 45	We	Th	Fr	Sa	Su	Mo	Tu	Tu
Lv El Paso, Tex. (M.T.)	6 30	We	Th	Fr	Sa	Su	Mo	Tu	Tu
Lv El Paso, Tex. (M.T.) (Sou. Pac.)	8 55	We	Th	Fr	Sa	Su	Mo	Tu	Tu
Lv Deming, N. M.	11 01	We	Th	Fr	Sa	Su	Mo	Tu	Tu
Lv Bowie, Ariz.	2 02	We	Th	Fr	Sa	Su	Mo	Tu	Tu
Lv Tucson, Ariz.	5 25	We	Th	Fr	Sa	Su	Mo	Tu	Tu
Lv Tucson, Ariz.	5 50	We	Th	Fr	Sa	Su	Mo	Tu	Tu
Lv Gila, Ariz.	9 10	We	Th	Fr	Sa	Su	Mo	Tu	Tu
Lv Wellton, Ariz.	11 40	Fr	Sa	Su	Mo	Tu	We	Th	Tu
Lv Yuma, Ariz. (M.T.)	12 40	Th	Fr	Sa	Su	Mo	Tu	We	Tu
Lv Yuma, Ariz. (P.T.) (No. 361)	1 00	Th	Fr	Sa	Su	Mo	Tu	We	Tu
Lv San Diego, Cal. (S.D.&A.E.)	8 45	Th	Fr	Sa	Su	Mo	Tu	We	Tu
Lv Yuma, Ariz. (P.T.) (S.D.&A.E.)	12 01	Th	Fr	Sa	Su	Mo	Tu	We	Tu
Lv Niland, Cal.	1 32	Th	Fr	Sa	Su	Mo	Tu	We	Tu
Lv Niland, Cal.	4 55	Th	Fr	Sa	Su	Mo	Tu	We	Tu
Lv Brawley, Cal.	6 08	Th	Fr	Sa	Su	Mo	Tu	We	Tu
Lv Niland, Cal.	1 32	Th	Fr	Sa	Su	Mo	Tu	We	Tu
Lv Indio, Cal.	2 48	Th	Fr	Sa	Su	Mo	Tu	We	Tu
Lv Colton, Cal.	5 28	Th	Fr	Sa	Su	Mo	Tu	We	Tu
Lv Alhambra, Cal. (Pasadena)	6 55	Th	Fr	Sa	Su	Mo	Tu	We	Tu
Lv Los Angeles, Cal. (No. 1)	7 30	Th	Fr	Sa	Su	Mo	Tu	We	Tu

LOS ANGELES TO SAN FRANCISCO

Lv	Station	No. 71 Daily				No. 77 Daily			
		Mo	Tu	We	Th	Mo	Tu	We	Th
Lv Los Angeles, Cal.	8 00	Th	Fr	Sa	Su	6 45	Th	Lounge	6 45
Lv Glendale, Cal.	8 26	Th	Fr	Sa	Su	7 11	Th	Car,	7 11
Lv Santa Barbara, Cal.	11 00	Th	Fr	Sa	Su	9 45	Th	Stand-	9 45
Lv San Luis Obispo, Cal.	2 10	Th	Fr	Sa	Su	12 57	Fr	dard	12 57
Lv Watsonville Jct., Cal.	6 12	Th	Fr	Sa	Su	5 15	Fr	Tourist,	6 12
Lv San Jose, Cal.	7 35	Th	Fr	Sa	Su	6 52	Fr	Dining	7 35
Lv Palo Alto, Cal.	8 02	Th	Fr	Sa	Su	e7 22	Fr	Car,	8 02
Lv Burlingame, Cal.	8 20	Th	Fr	Sa	Su	e7 41	Fr	Coaches	8 20
Lv San Francisco (3rd St.)	8 45	Th	Fr	Sa	Su	8 10	Fr		8 45

NEW YORK, WASHINGTON TO NEW ORLEANS

Lv	Station	B. & O.				I.C.			
		Mo	Tu	We	Th	Mo	Tu	We	Th
Lv New York, N. Y.	6 15	Mo	Tu	We	Th	12 25	Mo	Tu	We
Lv Philadelphia, Pa.	8 57	Mo	Tu	We	Th	3 16	Tu	We	Th
Lv Baltimore, Md.	10 52	Mo	Tu	We	Th	3 19	Tu	We	Th
Lv Washington, D. C.	11 43	Mo	Tu	We	Th	7 25	Tu	We	Th
Lv New York, N. Y.	9 50	Mo	Tu	We	Th	6 45	Mo	Tu	We
Lv Philadelphia (North), Pa.	11 31	Mo	Tu	We	Th	8 21	Mo	Tu	We
Lv Baltimore, Md.	1 43	Tu	We	Th	Fr	10 27	Mo	Tu	We
Lv Washington, D. C.	2 55	Tu	We	Th	Fr	11 55	Mo	Tu	We
Lv Atlanta, Ga.	6 05	Tu	We	Th	Fr	3 45	Tu	We	Th
Lv New Orleans, La.	8 05	We	Th	Fr	Sa	7 20	We	Th	Fr
Lv Chicago, Ill.	9 00	Tu	We	Th	Fr	e 1 00	Tu	We	Th
Lv New Orleans, La.	9 15	We	Th	Fr	Sa	9 00	We	Th	Fr
Lv Cincinnati, O. (C.T.)	6 00	Su	Mo	Tu	We	7 45	Su	Mo	Tu
Lv New Orleans, La.	7 50	Mo	Tu	We	Th	9 15	Mo	Tu	We
Lv Cincinnati, O. (C.T.)	7 45	Tu	We	Th	Fr	6 00	Tu	We	Th
Lv Louisville, Ky.	12 01	Tu	We	Th	Fr	9 40	Tu	We	Th
Lv New Orleans, La.	9 15	We	Th	Fr	Sa	7 50	We	Th	Fr
Lv New York, N. Y.	6 45	Sa	Su	Mo	Tu	6 45	Sa	Su	Mo
Lv Chattanooga, Tenn.	4 45	Su	Mo	Tu	We	8 55	Su	Mo	Tu
Lv Birmingham, Ala.	8 55	Su	Mo	Tu	We	7 15	Su	Mo	Tu
Lv New Orleans, La.	7 15	Mo	Tu	We	Th	9 50	Mo	Tu	We
Lv Cincinnati, O. (C.T.)	6 15	Mo	Tu	We	Th	8 35	Mo	Tu	We
Lv Louisville, Ky.	9 50	Mo	Tu	We	Th	2 50	Tu	We	Th
Lv Birmingham, Ala.	7 30	Tu	We	Th	Fr	8 30	Tu	We	Th
Lv New Orleans, La.	8 30	Tu	We	Th	Fr	6 50	Tu	We	Th

Standard Sleepers: Los Angeles and New Orleans (Sections, Compartments, Drawing Rooms), Los Angeles and St. Louis via S. P., T. & P., M. P. (Sections, Drawing-Room, Comp'ts).

Los Angeles and Mexico City, Sundays, Tuesdays and Thursdays, from Los Angeles; returning from Mexico City, Saturdays, Mondays and Wednesdays (Sections, Drawing-Room, Compartment).

San Diego and New Orleans (Sections, Drawing Room) via Yuma.

Houston to Chicago (Sections, Drawing-Room) on I. C. No. 4 from New Orleans to Chicago.

Houston and New Orleans (Sections).

New Orleans and Lake Charles. (Sections, Drawing-Room.) Open for occupancy at New Orleans and Lake Charles at 9:30 p. m. May be occupied at Lake Charles until 8:00 a. m.

Sun Parlor Lounge Car: Los Angeles and New Orleans (Barber, Valet, Shower-bath).

Tourist Sleeper: Los Angeles and New Orleans.

Dining Car: For all Meal Service, except breakfast into New Orleans. Complete luncheons and dinners 80c to \$1.25. Breakfasts 50c to 90c, also a la carte service.

Reclining Chair Car: Los Angeles and New Orleans.

Coach: San Diego and El Paso.

Coach: El Paso and New Orleans.

Tickets Honored: All classes.

Sunset Limited

COMPLETELY AIR-CONDITIONED

—•••—

All cars—coaches, chair cars, tourist sleeping cars, Pullmans, dining and lounge cars—are air-conditioned on the Sunset Limited between New Orleans and Los Angeles, via Houston, San Antonio, El Paso and Tucson.

The Sunset also carries a through air-conditioned Pullman between New Orleans and San Diego.

b—Stops to detain passengers from Watsonville Junction and beyond.

c—Individual weekly and monthly commutation tickets not honored between San Jose and San Francisco.

e—Extra fare train.

f—Flag stop to receive or discharge passengers.

Southern Pacific Steamship Lines

By Sea and Land to California

"100 Golden Hours at Sea," New York
to New Orleans, thence "Sunset Limited"

Fares same as all rail but include first
class meals and accommodations aboard ship



EXAMPLES OF MINIMUM FARES, INCLUDING MEALS AND SLEEPING ACCOMMODATIONS ON STEAMER

One way between New York and San Francisco
\$94.94 . . . 1st Cabin on steamer
thence in standard Pullman or Tour-
ist sleeping cars (berth extra).
\$77.06 . . . 1st Cabin on steamer
thence in tourist sleeping cars (Pull-
man berth charge extra).
\$66.68 . . . 1st Cabin on steamer
thence in coaches or chair cars.

Roundtrip between New York and Los Angeles or San Francisco
\$169.90 12 Month Limit

Above roundtrip fare includes 1st Cabin on steamer and will be accepted in Standard Pullman or Tourist Sleeping cars. (Pullman berth charge extra.)

One way, either direction, between New York and New Orleans
\$55 1st Cabin \$30 3d Class,

One way, either direction, between New York and Houston, or San Antonio
To San Antonio \$63.14 1st Cabin \$40.22 3rd Cabin
To Houston \$60.00 3rd Cabin

Roundtrips, either direction, between New York and New Orleans
1st Cabin (six months return limit) \$100.00. 60 Days \$90.00.
1st Cabin (limited to return voyage of ship) \$75.00.
3rd Class (six months return limit) \$40.00.

"All Expense" Tours New York to New Orleans and return

\$90 Minimum, Limited to return voyage of ship.

Includes roundtrip voyage (10½ days at sea) with first cabin accommodations and meals; room with private bath for 4 days at wide choice of leading New Orleans hotels (Optional: breakfasts and dinners for the four days \$6.40 to \$8.00 additional depending on hotel selected); interesting sightseeing trips in and around New Orleans.

Certain accommodations on steamer subject to extra charges.

SCHEDULE OF SAILINGS:

From New York, Pier 49, North River, 5:00 P.M. (Eastern Standard Time) Wednesday; due at New Orleans following Tuesday 7:00 A.M. (Central Standard Time).
From New Orleans, Canal Street Wharf, 11:00 A.M. (Central Standard Time) Saturday; due at New York following Thursday 8:00 A.M. (Eastern Standard Time).

Leave New York	Vessel	Arrive New Orleans	Leave New Orleans	Vessel	Arrive New York
Aug. 21	Dixie	Aug. 27	Aug. 10	Dixie	Aug. 15
Sept. 11	Dixie	Sept. 17	Aug. 31	Dixie	Sept. 5
Oct. 2	Dixie	Oct. 8	Sept. 21	Dixie	Sept. 26
Oct. 23	Dixie	Oct. 29	Oct. 12	Dixie	Oct. 17
Nov. 13	Dixie	Nov. 19	Nov. 2	Dixie	Nov. 7
Dec. 4	Dixie	Dec. 10	Nov. 23	Dixie	Nov. 28
			Dec. 14	Dixie	Dec. 19

Sailings subject to change or cancellation without notice.

FREIGHT SERVICE Between

New York, Boston, New Bedford, Baltimore, Norfolk and Galveston—Houston; New York—New Orleans

Fast Package Car Service from Gulf Ports

Through rates and through bills of lading between New England—Eastern Trunk Line territories and points in Mississippi, Louisiana, Arkansas, Texas, Oklahoma, Colorado, Utah, Eastern "Daylight Saving" Time.

New Mexico, Arizona, California, Oregon, Washington and Mexico; also to and from foreign countries via Gulf and Pacific ports.

Sunset Route TEXAS AND LOUISIANA LINES

(A)

NEW ORLEANS, BEAUMONT, HOUSTON, SAN ANTONIO, DALLAS, FORT WORTH AND DENVER

WESTBOUND					EASTBOUND						
1-13	22-13	7-17	7-19	3-13	Mls.	STATIONS	82-14	2	2	82-	
83		-1	85	83	0	Lv New Orleans	Ar 9 25	20-8	18-8	20-21	14-2
10*40			*9 35	*9 35	278	Lv Beaumont	Ar 12 35	10 20	10 20		7 35
7 05			6 23	5 23	362	Lv Houston	Ar 6 55	*16 15	7 10		11 30
11 25			11 30	19 20		Lv San Antonio	Ar				6 55
	*8 45					Lv Dallas	Ar 12*25	*9 45	11 30	*9 45	12 25
5 55	5 55	7 00	*16 55	5 55	626	Ar Fort Worth	Lv 11 25		10 40	19 45	11*25
6 45		7 45	7 45	6 45	648	Ar Denver (C.&S.)	Lv *7 25		*8 20		
8 40		9 40	9 40	8 40	1461						

(B)

NEW ORLEANS AND AUSTIN AND WACO

1-13	3-43	7-	7-17	Mls.	STATIONS	42	42-2	46-20	66-18-
10 40	*9 00	*9 35	*9 35	0	Lv New Orleans	Ar 7 35	9 25	7 25	7 25
9 00	7 25	8 20	8 20	362	Ar Houston	Lv 9 30	9 30	8 05	8 05
11 25	8 05	*9 20	11 30	362	Lv Houston	Ar 6 55	6 38	*16 15	7 10
	1 10		*5 15	526	Ar Austin	Lv 1 40	*1 40	*11 30	
*6 30		*7 00	7 00	548	Ar Waco	Lv *12 35		*10 00	*10 00

(C)

NEW ORLEANS, BEAUMONT, HOUSTON, SAN ANTONIO, GALVESTON

1	3	7	Mls.	STATIONS	2	4	8
*10 40	*9 00	*9 35	0	Lv New Orleans	Lv 7 35	9 25	7 25
7 05	5 23	6 23	362	Ar Beaumont	Lv 11 30	12 35	10 20
7 05	5 23	6 23	362	Lv Beaumont	Ar 11 30	12 35	10 20
9 00	7 25	8 20	362	Ar Houston	Lv 9 30	*10 30	8 05
		11 59	362	Lv Houston	Ar 9 00		7 00
	2 45	7 00	526	Ar San Antonio	Lv 3 30		*11 59
	6 11	9 40	611	Ar Galveston	Lv *7 25	6 8 00	6 6 00

(D)

NEW ORLEANS AND HOUSTON AND SHREVEPORT

	7-28	3-26	Mls.	STATIONS	25-2	27-8
	*9 35	*9 00	0	Lv New Orleans	Ar 7 35	7 25
	8 20	7 25	362	Ar Houston	Lv *9 30	*8 05
	*10 15	*8 40	0	Lv Houston	Ar 5 05	7 30
	7 00	4 40	232	Ar Shreveport	Lv *9 15	*11 00

(E)

EDINBURG-McALLEN-HARLINGEN-BROWNSVILLE

7-303	314	314	1-313	314-2
313	VIA HOUSTON	304-8	VIA SAN ANTONIO	314-2
*9 35	Lv New Orleans, La.	Ar 7 25	*10 40	Lv New Orleans, La.
8 20	Ar Houston, Tex.	Lv 8 05	2 45	Ar San Antonio, Tex.
8 30	Lv Houston, Tex.	Ar 7 45	9 30	Lv San Antonio, Tex.
5 41	Ar McAllen	Lv 10 20	5 41	Ar McAllen
7 10	Ar Harlingen	Lv 8 55	7 10	Ar Harlingen
8 00	Ar Brownsville, Tex.	Lv *8 00	8 00	Ar Brownsville, Tex.

PAN-AMERICAN AIR SERVICE

Lv Brownsville *9:00 AM, Ar Tampico 11:45 AM, Ar Mexico City 1:45 PM.
Lv Mexico City *8:00 AM, Ar Tampico 10:20 AM, Ar Brownsville 12:30 PM.

(F)

CHICAGO—HOUSTON

3-3	Mls.	STATIONS	2-4
*6 05	0	Lv Chicago (I.C.)	Ar 8 30
7 50	921	Ar New Orleans (I.C.)	Lv 8 30
9 00	921	Lv New Orleans	Ar 7 35
7 25	1283	Ar Houston	Lv *9 30

(G)

NEW ORLEANS—DALLAS

7-17	STATIONS	18-8
*9 35	Lv New Orleans	Ar 7 25
8 20	Ar Houston	Lv 8 05
7 00	Ar Dallas	Lv 11 30
7 00	Ar Colorado Springs (C&S)	Lv 10 30
9 40	Ar Denver	Lv *8 20

(H)

NEW ORLEANS, LOS ANGELES, SACRAMENTO, PORTLAND

1-25	15-60-26
59-60-16	2
Mo *10 40	Lv New Orleans (C.T.)
We 8 35	Ar El Paso (M.T.)
We 8 55	Lv El Paso (M.T.)
Th 7 35	Ar Los Angeles
Th 6 00	Lv Los Angeles
Fr 3 05	Lv Fresno
Fr 10 10	Lv Sacramento
Fr 9 20	Ar Klamath Falls
Sa 3 26	Ar Eugene
Sa 7 55	Ar Portland

NEW ORLEANS—DENVER

7-17	STATIONS	5-2
*9 35	Lv New Orleans	Ar 7 25
8 20	Ar Houston	Lv 8 05
7 00	Ar Dallas	Lv 11 30
7 00	Ar Colorado Springs (C&S)	Lv 10 30
9 40	Ar Denver	Lv *8 20

†-Daily, except Sunday.
¶-Daily except Monday. c-Mondays only.
b-Houston-Galveston Interurban. *Daily.
•Bus between Bremond and Waco.

Sunset Route—

TEXAS AND LOUISIANA LINES

(A) NEW ORLEANS, SAN ANTONIO AND MEXICO CITY, VIA LAREDO

Daily	Daily	Mis.	Daily	Daily
10 40	9 35	0	Lv New Orleans.....	Sou. Pac. Ar 7 35
2 45	7 00	573	Ar San Antonio.....	Sou. Pac. Lv 11 59
9 00	8 00	0	Lv San Antonio, Tex.....	I.-G. N. Ar 7 30
2 00	1 00	153	Ar Laredo, Tex (C.T.).....	I.-G. N. Lv 3 30
3 00	3 00	0	Lv Nuevo Laredo (M.T.).....	Nat. Ry. Ar 1 20
8 45	10 10	803	Ar Mexico City, Mex.....	Nat. Ry. Lv 7 50

REFERENCE MARKS

- Houston-Galveston Interurban.
- †—Daily except Sunday
- ¶—Daily, except Monday.
- Monday only.

(B) HOUSTON—MEXICO CITY

Daily	VIA LAREDO		Daily
8 31	Lv Houston.....	Ar	7 45
3 00	Ar Alice.....	Lv	12 57
4 15	Lv Alice.....	Tex.-Mex. Ar	10 35
9 00	Ar Laredo.....	Tex.-Mex. Lv	5 45
3 00	Lv Nuevo Laredo.....	Nat. of Mex. Ar	2 20
10 10	Ar Mexico City.....	Nat. of Mex. Lv	8 10

(E) HOUSTON AND SAN ANTONIO AND CORPUS CHRISTI

303	Mis.	304
* 8 30	0	Lv Houston.....
4 20	240	Ar Corpus Christi.....
313-		304-
* 9 30	0	Lv San Antonio.....
4 20	151	Ar Corpus Christi.....

(C) NATIONAL RYS. OF MEXICO, EL PASO, TORREON, MEXICO CITY

Daily	Ds/Mis.	Daily	Ds.
1 40	Mo.....	Lv El Paso (M.T.).....	Ar 5 00
2 40	Mo.....	Lv El Paso, Tex. (C.T.).....	Ar 6 00
3 50	Mo.....	Lv Ciudad Juarez, Mex. (C.T.).....	Ar 6 00
4 45	Tu.....	Lv Chihuahua.....	Ar 9 55
9 45	Tu.....	Lv Jimenez.....	Lv 4 25
10 20	Tu.....	Lv Torreon.....	Lv 10 55
4 00	We.....	Lv Aguascalientes.....	Lv 10 45
6 40	We.....	Lv Irapuato.....	Lv 5 20
1 05	We.....	Lv Queretaro.....	Lv 2 30
		Ar Mexico City, Mex.....	Lv 8 15

(F) DALLAS AND GALVESTON

14	18-171	Mis.	172-17	13
12 25	* 11 30	0	Lv Dallas.....	Ar 7 00
9 30	9 40	321	Ar Galveston.....	Lv * 7 25

(G) NEW ORLEANS AND JACKSONVILLE

2-3	5-1	Mis.	3	2	5-6-4
* 8 40	* 9 00	0	Lv New Orleans (L.&N.).....	Ar	7 20
6 35	5 25	245	Lv Pensacola, Fla. (L.&N.).....	Ar	9 20
1 30	1 30	447	Ar Tallahassee, Fla. (SAL).....	Lv	2 45
6 15	7 00	613	Ar Jacksonville, Fla. (SAL).....	Lv	9 50

(D) EL PASO, DALLAS, ST. LOUIS Texas and Pacific Ry. Missouri Pacific

2	6	Daily	Daily	Mis.	1	7
9 00	2 00	0	Lv El Paso, Tex. (M.T.).....	Ar	6 30	4 10
10 00	3 00	0	Lv El Paso, Tex. (C.T.), T. & P.	Ar	7 30	5 10
7 10	11 45	348	" Big Springs.....	"	9 15	7 40
8 45	4 40	413	" Sweetwater.....	"	7 20	5 05
9 40	2 35	455	" Abilene.....	"	6 20	3 25
10 55	4 13	500	" Cisco.....	"	4 55	1 50
2 05	7 00	615	Ar Fort Worth.....	Lv	1 45	10 20
3 10	8 30	647	" Dallas.....	Lv	12 20	8 55
6 47	1 30	797	Lv Marshall.....	Lv	8 30	4 20
8 20	3 20	859	Ar Texarkana, Tex.....	Mo. Pac.	6 45	2 50
11 50	9 35	1004	Ar Little Rock, Ark.....	"	3 05	11 15
7 25	1330	Ar Memphis, Tenn.....	"	Lv	10 45	8 00
8 30	7 42	1349	Ar St. Louis, Mo.....	Lv	6 30	2 00

(H) DALLAS AND SAN ANTONIO

18-21	20-21	22-13
* 11 30	† 9 45	Lv Dallas.....
9 20	† 7 45	Ar San Antonio.....

"SUNBEAM"—13-14 HOUSTON, DALLAS AND FT. WORTH

Daily	Daily
11 25	Lv Houston.....
5 55	Ar Dallas.....
6 45	Ar Fort Worth.....

NEW ORLEANS, NASHVILLE, CHICAGO, LOUISVILLE AND CINCINNATI

2	98	4	Mis.	99	1	3
8 40	8 20	9 00	0	Lv New Orleans, La.....	L. & N. Ar	7 55
12 49	12 17	1 07	139	" Mobile, Ala.....	" Lv	4 10
8 10	5 12	6 15	318	" Montgomery, Ala.....	" " 11 35	
11 40	7 31	8 45	416	" Birmingham, Ala.....	" " 9 30	
6 40	12 12	1 40	621	Ar Nashville, Tenn.....	" Lv	4 45
		2 00	621	Lv Nashville, Tenn.....	" Ar	1 25
		6 30	773	Ar Evansville, Ind.....	C. & E. I. " 9 05	
		2 00	1066	" Chicago, Ill.....	" Lv	2 45
2 25	5 00	7 25	807	Lv Louisville, Ky.....	L. & N. " 12 22	
7 05	9 20	11 55	921	Ar Cincinnati, Ohio (E.T.).....	" Lv	10 00

NEW ORLEANS, BIRMINGHAM, CHATTANOOGA, CINCINNATI

42	44	Daily	Daily	Mis.	41	43
8 40	8 10	0	Lv New Orleans, La.....	Southern Ar	7 15	6 00
2 45	1 55	202	" Meridian, Miss.....	" " 1 25	11 55	
5 18	4 25	299	" Tuscahoochee, Ala.....	A. G. S. " 10 50		
7 15	6 10	357	" Birmingham, Ala.....	" " 9 15		
11 15	10 25	493	" Chattanooga, Tenn. C.N.O. & T.P.	" " 5 05		
6 30	5 40	754	" Lexington, Ky.....	" " 9 40		
9 40	8 50	836	Ar Cincinnati, O. (E.T.).....	" Lv	8 45	

Trains 313 and 314—BORDER LIMITED—Daily

Standard Sleeping Car: San Antonio and Brownsville (Sections, Drawing-Room). Sleeper may be occupied at San Antonio until 8 a. m. Coach: San Antonio and Brownsville.

A. C.—Regularly assigned cars Air-Conditioned.

Train 3—TEXAS LIMITED—Daily

A. C. Standard Sleeping Car: Chicago to Houston (Sections, Drawing-Room) on I. C. No. 3 Chicago to New Orleans, S. P. No. 3 to Houston.
A. C. Pullman Cafe Lounge Car: New Orleans to Houston (Sections, Cafe Lounge). Sleepers may be occupied at Houston until 8 a. m.
Chair Car and Coach: New Orleans to Houston.

Train 4—NEW ORLEANS LIMITED—Daily

A. C.—Pullman Cafe Lounge Car: Houston to New Orleans (Sections, Cafe Lounge). Chair Car and Coach: Houston to New Orleans.

Train 7—SUNSET MAIL—Train 8

All regular cars Air-Conditioned.
Observation Sleeper: New Orleans and San Antonio (Sections).
Standard Sleepers: Houston and San Antonio (Sections, Drawing-Rooms). Houston and San Antonio (Sections).
Sleepers on S. P. 7, may be occupied at San Antonio, and on S. P. 8, at Houston until 8 a. m.
New Orleans and Denver, Colo. (Sections, Drawing-Rooms) (on S. P. 7 and 8, New Orleans and Houston; S. P. 17 and 18, Houston and Dallas; F. W. D. C.-C. & S. 1 and 2, Dallas and Denver.)
Diner: New Orleans and Houston.
Coach: New Orleans and San Antonio.

Train 13—THE SUNBEAM—Train 14—Daily

All regular cars Air-Conditioned.
Parlor Car: Houston and Dallas.
Diner and Coaches: Houston and Dallas.
Standard Sleeping Car: Brownsville, Tex., and St. Louis, Mo. (Sections, Compartments, Drawing-Room) on S. P. Nos. 314-304 and 303-313 Brownsville and Houston; S. P. Nos. 13 and 14 Houston and Dallas; M. K. & T. Frisco No. 8, Dallas to St. Louis, Frisco-M. K. T. No. 1 St. Louis to Dallas.

Train 17—THE OWL—Daily

All regular cars Air-Conditioned.
Standard Sleeper: Galveston to Dallas (Sections, Drawing-Room) on S. P. No. 172, Galveston to Houston.
Houston to Fort Worth (Sections, Drawing-Room). (S. P. 85 Ennis to Fort Worth, via Waxahachie).
Houston to Dallas (Sections).
Houston to Austin (Sections, Drawing-Room), S. P. 45 Hempstead to Austin. Sleeper occupancy at Austin, until 8:00 a. m.
New Orleans to Denver, Colo. (Sections, Drawing-Rooms) (on S. P. 7 New Orleans to Houston, S. P. 17 to Dallas, F. W. D. C.-C. & S. 1 to Denver).
Coaches: Houston to Dallas. Houston to Austin (S. P. 45 from Hempstead).
Chair Car: New Orleans to Dallas (on S. P. No. 7, New Orleans to Houston).

Train 18—THE OWL—Daily

All regular cars Air-Conditioned.
Standard Sleeping Car: Dallas to Galveston (Sec.; D. R.) on S. P. 171 Houston to Galveston. Dallas to Houston (Sections).
Denver, Colo. to New Orleans (Sections, Drawing-Rooms (on F. W. D. C., C. & S. 2 to Dallas, S. P. 18 to Houston, S. P. 8 to New Orleans).
Ft. Worth to Houston (Sections, Drawing-Room), (S. P. 86, Ft. Worth to Ennis via Waxahachie).
Sleepers may be occupied at Houston until 8 a. m.
Coach: Dallas to Houston.
Chair Car: Dallas to New Orleans (on No. 8 Houston to New Orleans).

Train 19-15

Coaches: Houston to Dallas and Dallas to Denison.

Train 16-20

Daily Denison to Dallas; Daily, except Sunday, Dallas to Houston.
Standard Sleeping Car, A. C.: Austin to Houston (S. P. 46 daily, Austin to Hempstead) (S. P. 20 daily, except Monday, Hempstead to Houston; on S. P. 18 Monday only, Hempstead to Houston (Sections, Drawing-Room).
Sleeper may be occupied at Houston until 8 a. m.
Coach: Denison to Dallas and Dallas to Houston. A. C. Austin to Houston (S. P. 46 daily, Austin to Hempstead, S. P. 20 daily, except Monday, Hempstead to Houston (on S. P. 18 Monday only, Hempstead to Houston).

Trains 27 and 28—Daily

Standard Sleeping Car (Sec., Drawing-Room) and Coaches: Shreveport and Houston.

Trains 43 and 42—Daily—Motor Train

A. C. Coach: Houston and Austin.

Trains 45 and 46—Daily

A. C. Standard Sleeping Car: Houston and Austin (Sections, Drawing-Room). (S. P. 17, Houston to Hempstead). (S. P. 20 Hempstead to Houston, Daily, except Monday, on S. P. No. 18 Mondays only.) (Sleeper may be occupied at Austin and Houston until 8 a. m.)
A. C.—Coach: Houston and Austin (S. P. No. 17 Houston to Hempstead; S. P. No. 20 Hempstead to Houston, Daily except Monday, on S. P. No. 18 Mondays only.)

Trains 65 and 66—Daily

Coach: Bremond and Waco.

Trains 303 and 304—Daily—Border Limited

Standard Sleeping Car: Houston and Corpus Christi (during Sept.) Sections, Drawing-Room (Sleeper may be occupied at Corpus Christi 8 a.m.; occupancy Corpus Christi 9:30 p. m.) Coach: Houston and Corpus Christi.

Trains 314-304 and 303-313—Daily—Border Limited

A. C.—Standard Sleeping Car: Brownsville, Tex. and St. Louis, Mo (Sections, Compartments, Drawing-Room), on S. P. Nos. 314-304 and 303-313 Brownsville and Houston, S. P. Nos. 13 and 14 Houston and Dallas, M. K. & T.—Frisco No. 8, Dallas to St. Louis, Frisco-M. K. & T. No. 1, St. Louis to Dallas.
Chair Car: Brownsville and Houston.

Illinois Central R. R. NEW ORLEANS, LOUISVILLE AND CINCINNATI

101-105-3	Daily	Daily	Mis.	(R)
2-102	4-104	101-105-3	0	Lv New Orleans, La.....
8 30	8 30	Ar	4 10	Ar Jackson, Miss.....
1 20	1 50	Ar	4 10	Ar Grenada, Miss.....
4 38	4 37	Ar	1 02	Ar Memphis, Tenn.....
7 25	9 35	Ar	10 45	Ar Fulton, Ky.....
10 20	12 25	Ar	7 05	Ar Paducah, Ky.....
5 15	7 50	Ar	12 01	Ar Louisville, Ky.....
11 00	12 20	Ar	8 40	Ar Cincinnati, O. (E.T.).....

Sunset Route

NEW ORLEANS, HOUSTON, SAN ANTONIO, EL PASO

CHICAGO, ST. LOUIS, KANSAS CITY, EL PASO

Westbound—Sunset Route

Elv.	(A)	Mls.	1 Daily	7 Daily	3 Daily
.....	Lv New Orleans, La.(C.T.)	0	10 40	9 35	9 00
12	Union Station	0	10 40	9 35	9 00
12	New Orleans (Carrollton Ave)	2	10 47	9 42	9 07
12	Avondale	2	11 50	10 35	10 05
8	Boutte	24		10 55	
9	Des Allemands	32		11 08	
8	Raceland Junction	40		11 21	
25	Lafourche	52		11 36	
17	Schriever	55		11 46	
11	Donner	66		11 57	
11	Gibson	66		12 02	11 13
13	Boeuf	73		12 07	11 27
14	Morgan City	80	f 1 26	12 32	11 53
15	Berwick	81		12 36	11 55
9	Patterson	87		12 51	12 13
12	Bayou Sale	96		1 05	
10	Franklin	101	f 2 03	1 15	12 35
13	Baldwin	105		1 27	
19	Jeanerette	114	f 2 21	1 36	12 56
21	New Iberia	126	f 2 40	1 58	1 17
34	Cade	133		2 10	
39	Ar Lafayette	145		2 22	1 50
39	Lv Lafayette	145		2 35	1 55
35	Rayne	160		3 00	
23	Crowley	167		3 13	2 29
18	Midland	175		3 26	
16	Mermentau	180	e 4 12	3 33	
29	Jennings	185	e 4 22	3 38	2 58
29	Roanoke	191		3 48	
23	Welsh	195	e 4 38	3 58	
24	Iowa	207		4 23	
16	Lake Charles	219	e 5 25	4 45	3 46
19	Sulphur	229	e 5 43	5 00	
23	Edgerly	236		5 12	
16	Vinton, Louisiana	242		5 22	
16	Ar Echo, Texas	252			
16	Lv Echo, Texas	252			
10	Orange	256	6 30	5 50	4 46
22	Beaumont	279	7 05	6 23	5 23
45	Nome	298		6 49	
60	Devers	308		7 02	
34	Liberty	321	f 7 57	7 19	6 18
85	Dayton	327		7 29	6 29
51	Crosby	341		7 46	6 49
47	Ar Houston (G. C. Station)	362	9 00	8 20	7 25
47	Lv Houston	362	10 00	10 00	8 00
7	Ar Galveston	419	11 36	11 30	9 40
7	Lv Galveston	0	7 00	7 25	
47	Ar Houston	57	8 30	9 05	
47	Lv Houston	362	9 20	11 51	
82	Sugarland	388		12 46	
90	Richmond	396		12 59	
107	Rosenberg	399	10 18	1 10	
117	Tavener	410		1 27	
126	East Bernard	415	10 39	1 35	
425	Lissie	425		1 50	
174	Eagle Lake	432	11 04	2 08	
189	Alleyton	444		2 29	
202	Columbus	448	11 29	2 39	
410	Weimar	462	11 55	3 08	
345	Schulenburg	471	12 06	3 23	
463	Engle	478		3 35	
452	Platonia	483	12 28	3 47	5 15
367	Waelder	495	12 44	4 07	5 31
456	Harwood	508	1 04	4 27	5 50
407	Luling	517	1 20	4 50	6 04
605	Kingsbury	528		5 14	6 22
550	Seguin	537	1 50	5 38	6 37
555	Hilda	556		5 48	6 46
643	Marion	548		6 00	6 53
698	Cibolo	553		6 12	7 01
713	Schertz	556		6 18	7 05
712	Randolph Field (Airport)	557	f 2 16	6 20	7 07
612	Converse	560		6 25	7 11
721	Ar San Antonio, Tex.	573	2 45	7 00	7 45

Elv.	(B)	Mls.	1 Daily
661	Lv San Antonio	573	3 10
631	Macondo	590	
721	Lacoste	598	f 3 52
778	Noonan	605	
992	Dunlay	612	f 4 15
833	Quihi	617	
890	Hondo	622	4 33
881	D'Hanis	630	
1065	Seco	635	
957	Sabinal	643	5 08
969	Yuca	648	
985	Knippa	654	f 5 23
1006	Inge	660	
931	Uvalde	665	5 45
939	Hacienda	671	
1043	Obi	676	
997	Cline	683	6 09
1102	Odlaw	688	
1042	Pavo	693	
975	Anacacho	697	
1009	Ar Spofford	705	6 45
1009	Lv Spofford	705	5 00
956	Nora	712	f 5 15
927	Darling	718	f 5 30
820	Paloma	726	f 5 45
767	Olmos	733	f 6 10
731	Ar Eagle Pass	739	7 15
1009	Lv Eagle Pass	0	11 55
1009	Ar Spofford	34	2 00
1009	Lv Spofford	705	6 45
1086	Standart	723	
964	Ar Del Rio	742	7 35
964	Lv Del Rio	742	7 45
923	McKees	751	
955	Devil's River	757	f 8 08
1417	Cabra	772	
1545	Comstock	777	f 8 43
1549	Viaduct	787	
1381	Pecos River Bridge	790	
1413	Shumla	795	
1397	Langtry	806	f 9 45
1815	Pumpville	827	10 16
1508	Lozier	834	10 31
1719	Watkins	844	10 47
1912	Thurston	852	
2106	Dryden	858	11 13
2771	Ar Sanderson	879	11 69
2771	Lv Sanderson	879	12 10
3093	Emerson	888	
3368	Longfellow	896	12 43
3663	Rosefield	904	
3725	Tesnus	911	f 1 19
3881	Haymond	924	f 1 32
4043	Marathon	939	2 01
4484	Alpine	971	2 58
5074	Paisano (Summit)	983	f 3 25
4694	Marfa	996	3 55
4432	Ar Valentine	1032	4 50
4432	Lv Valentine	1032	4 55
3942	Lobo	1069	f 5 37
4193	Dalberg	1073	
4281	Hot Wells	1078	f 6 06
4519	Sierra Blanca	1101	6 45
4117	Small	1123	f 7 17
3949	Finlay	1123	f 7 25
3568	McNary	1135	f 7 48
3592	Fort Hancock	1140	f 7 57
3583	Tornillo	1158	f 8 25
3615	Fabens	1164	f 8 35
3632	Clint	1171	f 8 46
3664	Ysleta (C.T.)	1181	f 9 01
3719	Ar El Paso, Tex.(M.T.)	1193	8 35

Time shown in light figures indicates A.M.; Time shown in dark figures indicates P.M.

Numbers following station names refer to other tables showing connecting lines.

*—Daily.
 *—Monday only—motor.
 †—Meals.
 †—Daily except Sunday.
 †—Daily except Monday—motor.
 †—Houston-Galveston Interurban.
 †—Stops on signal to entrain passengers for El Paso and beyond.
 †—Flag stop for revenue passengers only.
 †—Stops Mondays only to detrain passengers.
 †—Flag stop to entrain or detrain passengers.
 †—Daily except Monday.
 †—Stops on flag to detrain revenue passengers from Houston and points east destined Gonzales; also to entrain revenue passengers from Gonzales destined to San Antonio and stations west.
 †—Stops to detrain revenue passengers from Houston and points east destined Gonzales, also to entrain passengers from Gonzales destined to San Antonio and points west.
 †—Does not stop; for information only.
 †—Connects with Bus, Lv Del Rio 7:45, Ar Eagle Pass 9:30; also with Bus from Eagle Pass, Lv Eagle Pass 5:00, Ar Del Rio 7:00.
 †—Auto.
 P.T.—Pacific Time.
 C.T.—Central Time.
 M.T.—Mountain Time.
 No. 1-77 will stop at any station west of Lafayette to detrain passengers from connecting lines at New Orleans; at any station east of San Antonio to entrain passengers for west of San Antonio; at any station between Houston and San Antonio to detrain passengers from points east of Houston at which train is scheduled to stop; at any station between San Antonio and El Paso to entrain or detrain passengers. Yuma to Los Angeles to detrain passengers from Yuma or beyond. Santa Barbara to San Francisco to detrain passengers from Yuma and beyond.

Westbound, Golden State Route

Elv.	(C)	Mls.	11 Daily	3 Daily
590	Lv Chicago, Ill.(C.T.)C.R.I.&P.	0	10 30	8 45
606	Ar Davenport, Ia.	183	2 55	9 00
748	Ar Kansas City, Mo.	510	11 15	
590	Lv Chicago, Ill. (C.T.)...C.&A.	0	6 45
448	Ar Kansas City, Mo.	483	7 30
854	Lv Minneapolis, Minn., C.R.I.&P.	0	10 40	5 00
732	Ar St. Paul, Minn.	11	11 20	5 40
796	Ar Des Moines, Ia.	271	7 35	12 50
748	Ar Kansas City, Mo.	501	1 15	7 30
480	Lv St. Louis, Mo.	0	8 00	11 45
748	Ar Kansas City, Mo.	296	5 10	7 15
748	Lv Kansas City, Mo.	510	11 55	9 40
892	Ar Topeka, Kan.	579	1 25	11 10
1340	Ar Herington, Kan.	661	3 40	1 35
1506	Ar McPherson, Kan.	707	4 53	2 48
1541	Ar Hutchinson, Kan.	736	5 40	3 30
2851	Ar Liberal, Kan.	923	10 55	8 15
3497	Ar Texhoma, Okla.	983	12 36	
3980	Ar Dalhart, Tex.	1035	1 45	10 50
3980	Lv Dalhart, Tex.	1035	1 55	11 00
4075	Ar Tucumcari, N.M.(C.T.)	1128	4 15	1 15
262	Lv Memphis, Tenn.	0	10 15
266	Ar Little Rock, Ark.	32	1 20
1199	Ar Oklahoma City, Okla.	466	11 35
1327	Ar El Reno, Okla.	513	12 35
3667	Ar Amarillo, Tex.	763	8 00
4075	Ar Tucumcari, N.M.(C.T.)	877	11 15
5183	Lv Denver, Colo.	0	8 20	7 25
5984	Ar Colorado Springs, Colo.	75	10 30	9 35
4656	Ar Pueblo, Colo.	119	11 45	10 40
5990	Ar Trinidad, Colo.	213	2 40	1 55
3980	Ar Dalhart, Tex.	384	8 40	7 30
3980	Lv Dalhart, Tex.	384	1 55	11 00
4075	Ar Tucumcari, N.M.(C.T.)	477	4 15	1 15
4075	Lv Tucumcari (MT)Sou.Pac.	1128	3 30	12 30
4178	Ar Hargis, N. M.	1133	f 3 40	
4352	Ar Palomas	1137	f 3 49	
4319	Ar Montoya	1148	f 3 49	
4553	Ar Newkirk	1160	f 4 18	
4834	Ar Cuervo	1171	f 4 49	
4900	Ar Los Tancos	1177	f 4 49	
4600	Ar Santa Rosa	1186	4 58	f 1 49
4687	Ar Pintado	1181	5 05	
5140	Ar Guadalupe	1191	5 23	
5287	Ar Pastura	1208	f 5 30	
5851	Ar Tony	1226	f 5 56	
5942	Ar Vaughn	1229	f 6 07	2 59
6268	Ar Duran	1245	f 6 29	
6435	Ar Torrance	1256	f 6 44	
6465	Ar Varney	1259	f 6 49	
6666	Ar Corona	1264	6 59	
6637	Ar Gallinas	1272	f 7 09	
6600	Ar Elda	1277	f 7 22	
6538	Ar Teolote	1281	f 7 22	
6278	Ar Luna	1287	f 7 30	
6115	Ar Ancho	1292	f 7 36	
5902	Ar Largo	1295	f 7 41	
5801	Ar Coyote	1302	f 7 50	
5439	Ar Carrizozo	1315	8 17	5 04
5019	Ar Oscura	1331	f 8 36	
4562	Ar Three Rivers	1343	f 8 50	
4444	Ar Alamosa	1360	9 13	5 58
4323	Ar Alamogordo	1372	9 36	6 21
4027	Ar Valmont	1383	f 9 51	
4103	Ar Turquoise	1404	f 10 17	
4170	Ar Orogrande	1410	10 25	
3990	Ar Newman	1437	f 10 57	
3877	Ar Planeport, N. M.	1453	f 11 14	
3889	Ar Fort Bliss	1454	f 11 16	
3719	Ar El Paso			

Sunset Route

EL PASO, BOWIE, DOUGLAS, TUCSON, PHOENIX, LOS ANGELES, SAN DIEGO, SAN FRANCISCO

Westbound

Elev	(A)	Mls.	3 Daily	1 Daily	11 Daily
3719	Lv El Paso, Tex. (M.T.)	1193	8 50	8 55	12 01
4211	" Afton, N. M.	1229		9 55	
4227	" Cambray	1254		10 26	
4334	" Denning	1280		11 01	
4489	" Gage	1300		11 31	
4503	" Separ	1320		11 57	
4244	Lv Lordsburg	1340		12 27	
4244	Lv Lordsburg	1340		12 27	
4347	" S. Cimn, N. M.	1357		1 06	
3611	" S. Simon, Ariz.	1374		1 30	
3761	Ar Bowie	1390		2 02	
3761	Lv Bowie (To Apache Trail)	1390		2 45	
35.0	Ar Globe	1514		6 56	
35.10	Lv Globe	0		9 10	
3761	Ar Bowie	124		1 20	
3761	Lv Bowie	1390		2 02	
4167	" Wilcox	1414		2 47	
4225	" Cochise	1424		3 02	
4613	" Dragon	1434		3 20	
3580	" Benson	1456		4 06	
4064	" Mescal	1465		4 25	
3547	" Empire	1476		4 47	
3238	" Vail	1485		4 52	
3014	" Cruz	1498		5 06	
2536	" Polvo	1501			
2386	Ar Tucson, Ariz.	1505		5 25	
4103	Lv Mastodon, N. M.	14		12 28	
4057	" Columbus	73	10 28	1 38	
4511	" Hachita	117	11 28	2 33	
4119	" Rodeo, N. M.	165	12 30	3 40	
4599	" Casador, Ariz.	202		4 30	
3970	Ar Douglas	216	1 45	5 05	
3970	Lv Douglas	216	1 55	5 05	
4676	Ar Bisbee Jct.	239	2 40	5 40	
4676	Lv Bisbee Jct.	239	2 40	5 40	
5294	Ar Bisbee	247	3 05	6 05	
5294	Lv Bisbee	0	3 10	5 10	
4676	Ar Bisbee Jct.	8	1 55	5 35	
4676	Lv Bisbee Jct.	239	2 40	5 40	
4580	" Naco	242	2 45	5 48	
4183	" Hereford	254	3 05	6 05	
4030	" Lewis Springs	265	3 15	6 20	
3853	" Fairbank	275	3 39	6 42	
3893	" Boquillas	280		6 48	
3999	" San Juan	288		6 57	
4053	" Miramonte	295		7 09	
2386	Ar Tucson, Ariz.	340	5 15	8 10	
2386	Lv Tucson, Ariz.	1505	5 30	8 25	
2152	" Cortaro	1517	5 49	8 45	
2057	" Rillito	1522	5 55	8 59	
1990	" Marana	1527	6 01	9 13	
1864	" Red Rock	1538	6 13	9 33	
1759	" Wymola	1545	6 21	9 39	
1616	Ar Picacho	1551	6 30	9 32	
1616	Lv Picacho	0	6 30	9 32	
1425	" Coolidge	19	6 58	10 00	
1214	" Chandler	52	7 44	10 41	
1229	" Mesa	59	7 59	10 55	
1161	" Tempe	67	8 15	11 10	
1074	Ar Phoenix (To Apache Trail)	75	8 35	11 30	
1074	Lv Phoenix	75	8 25	11 40	
871	" Litchfield	88	9 25		
888	" Buckeye	105	9 46	12 25	
876	" Haysayampa	113			
535	" Hyder (Aqua Caliente Spgs.)	151	11 13	1 32	
255	Ar Wellton	211	12 20		
1616	Lv Picacho	1551	7 00		
1508	" Eloy	1556	7 06		
1395	" Casa Grande	1570	7 30		
1173	" Maricopa	1590	8 02		
736	" Gila	1633	9 20		
687	" Sentinel	1662	10 07		
494	" Aztec	1676	10 30		
540	" Mohawk	1696	10 59		
304	" Ming	1713	12 10		
255	" Wellton	1718	12 20	11 40	
142	Ar Yuma, Ariz. (M.T.)	1756	1 20	12 40	3 27

5 S. P. Trains to and from California Completely Air-Conditioned

Five famous Southern Pacific trains to and from California are completely air-conditioned — Sunset Limited (New Orleans-Los Angeles); Golden State Limited (Chicago-Los Angeles); Overland Limited and Pacific Limited (San Francisco-Chicago) and The Cascade (San Francisco-Portland).

P.T.—Pacific time.
M.T.—Mountain time.
C.T.—Central time.
*—Daily.
=Below Sea Level.
▲—Pacific Greyhound Bus.
a—"Oakland Lark" leave San Jose 8.01 A. M.; arrive Oakland (First St.) 9.08; arrive Oakland Pier 9.17 A. M.
b—Stops to detain passengers from El Paso or beyond; also to entrain passengers for Phoenix line points.
c—Stops on signal to detain passengers from Phoenix or beyond; also to entrain passengers for Los Angeles.
d—Stops to detain passengers from El Paso or beyond; also to entrain passengers for Los Angeles.
e—Stops on flag to receive passengers for Phoenix line points only.
f—Flag stop to entrain or detain passengers.
g—Bus.
h—Stops on flag to detain passengers from East of Yuma.
k—Stops to detain passengers from Phoenix or beyond; also to entrain for Yuma and beyond where scheduled to stop.
m—Stops to detain passengers from east of El Paso; also to entrain passengers for Yuma or beyond.
n—Stops to detain passengers from El Paso or beyond.
p—Stops to detain passengers from Yuma or beyond.
r Train Connection via Watsonville Jet.
u—La Quinta.
w—Bus connection at Salinas.
y—Winter resorts. Desert Inn, E Mirador, Oasis, Deep Well, Smoke Tree Ranch.
Time shown in light figures indicates A. M. Time shown in dark figures indicates P. M.

Westbound

Elev	(B)	Mls.	819 Daily	1 Daily	3 Daily	11 Daily	365 Daily	357-51 Daily
142	Lv Yuma, Ariz. (P.T.)	1756	12 01	12 40	2 40			
353	" Ogilby, Calif.	1772	12 24	1 03	3 05			
320	" Glamis	1791	12 48		3 21			
=130	Ar Niland	1821	1 32	2 07	4 05			
142	Lv Yuma, Ariz. (P.T.) Sou. Pac.	0	1 00	1 00			10 00	
125	" Cantu	9	1 22	1 22			10 35	
121	" Algodones	10	1 24	1 24			10 40	
= 1	" Mexicali	60	2 38	2 38			1 00	
= 2	Ar Calexico	61	2 42	2 42			1 15	
= 2	Lv Calexico	61	2 52	2 52			1 30	
= 16	" Heber	65	3 01	3 01			2 35	6 30
= 49	Ar El Centro	70	3 10	3 10			2 45	6 42
= 49	Lv El Centro	0	3 15	3 15			2 55	6 55
2380	" Carrizo Gorge	47	5 09	5 09			7 10	10 24
2830	" Jucumba	55	5 37	5 37			10 57	
125	" Agua Caliente	130	8 00	8 00			3 00	
100	" Tijuana	132	8 05	8 05			3 06	
13	Ar San Diego	148	8 45	8 45			4 20	
= 49	Lv El Centro	70	9 27				2 55	
= 68	" Imperial	74	9 38				3 05	
= 117	" Brawley	83	10 10				3 23	
= 160	" Rockwood	88	10 19				3 32	
= 183	" Calipatria	94	10 33				3 41	
= 130	Ar Niland	102	10 43				3 55	
= 130	Lv Niland	1821	10 53	1 32	2 07	4 03		
= 202	" Salton	1851	11 37			4 36		
= 197	" Mecca	1865	11 59	2 21	3 01	4 52		
= 127	" Thermal	1871	12 14	2 28	3 09	5 00		
= 72	" Coachella	1875	12 24	2 34	3 14	5 05		
= 20	" Indio ("r")	1878	12 40	2 48	3 26	5 17		
1125	" Palm Springs ("y")	1906	1 36	3 40	4 17	6 08		
1779	" Cabazon	1915	2 02	4 05		6 28		
2318	" Banning	1921	2 21	4 23	4 51	6 43		
2559	" Beaumont	1927	2 38	4 39	5 04	6 58		
1307	" Redlands	1943	3 12	5 08	5 33	7 27		
1071	" Loma Linda	1946	3 20	5 15	5 45	7 39		
964	Ar Colton	1950	3 29	5 21	5 45			
1082	Lv Bloomington	1954	3 47	5 37	5 58			
1025	" South Fontana	1959	3 57	5 43	6 04			
952	" Guasti	1965	4 07	5 52	6 12			
980	" Ontario (To Upland)	1969	4 15	6 01	6 18	8 12		
855	" Pomona	1975	4 31	6 12	6 28	8 22		
320	" Puente	1988	4 54					
287	" Basset	1992	5 00					
285	" El Monte	1994	5 06		6 55			
409	" San Gabriel	1998	5 16					
459	" Alhambra (Pasadena)	2001	5 25	6 55	7 05	9 13		
293	Ar Los Angeles	2008	6 00	7 30	7 40			
293	Lv Los Angeles, Cal.	2008	8 00	6 45	8 30	10 00	1 00	
425	Lv Glendale	2015	8 26	7 11	8 56	10 31	1 22	
7	Ar Santa Barbara	2112	11 00	9 45	11 20	1 10	3 50	
239	Ar San Luis Obispo	2231	2 10	12 57	2 22	4 39		
722	Ar Paso Robles Hot Springs	2267	3 38	4 39		6 14		
18	Ar Castroville	2373				7 02		
43	Lv Salinas	2373	▲ 5 50				11▲00	
27	Ar Del Monte	2387	▲ 6 26		7 16		11▲31	
3	Ar Monterey	2388	▲ 6 30		7 20		11▲35	
45	Ar Pacific Grove	2391	▲ 6 40		7 40		11▲45	
18	Lv Castroville	2373				7 02		
21	Ar Watsonville Junction	2383	▲ 6 12	5 15	6 15	9 20		
21	Lv Watsonville Junction	2383	▲ 6 30			9 30		
22	Ar Watsonville	2384	▲ 6 40			9 35		
8	Ar Santa Cruz	2403	7 40			10 20		
21	Lv Watsonville Junction	2383	6 20	5 30	6 32	9 30		
86	Ar San Jose	2432	7 35	6 52	7 45	10 50		
59	Ar Palo Alto	2449	8 01	7 21	8 11	11 21		
25	Ar Burlingame	2463		7 41	8 31			
8	Ar San Francisco (3rd St.)	2479	8 45	8 10	9 00	12 10		
293	Lv Los Angeles	2008		51 Daily	25 Daily	55 Daily		
425	Lv Glendale	2015		7 50	6 00	8 35		
414	Lv Bakersfield	2179		8 15	6 24	9 07		
219	Ar Fresno	2286		1 30	12 11	3 40		
6	Ar San Francisco (Market St.)	2492		4 00	2 40	7 20		
				10 12	8 52	1 52		

Sample Menu

Our new "Meals Select" offer complete dinners and luncheons for 80c to \$1.25. Here is a sample:

80c

Beef Broth or Consomme
Grilled Salmon
Lima Beans
Fried Potatoes
The Salad Bowl
Apple Pie, or Ice Cream & Cake, or Custard
Hot Corn Bread
Assorted Bread
Tea, Coffee, Milk

Street Car and Bus Service

between Southern Pacific Ferry Station and Third Street Station, San Francisco: Street Car No. 28 leaves both Stations frequently, fare 5c. Municipal Ry. Bus week days, every 15 minutes from 6.00 to 6.40; Sundays every 30 minutes from 7.00 to 6.45.

CARLSBAD CAVERNS

World's largest underground spectacle. A one day motor side trip from El Paso. You leave El Paso in the morning, visit the Caverns, and return to El Paso same evening. Ask any S. P. representative for illustrated folder.

STORE-DOOR FREIGHT SERVICE

Merchandise Freight will be picked up at shipper's place of business and delivered promptly to consignee at destination by SOUTHERN PACIFIC MOTOR TRANSPORT SERVICE. Phone any Southern Pacific Agent for Pick-up Service or information.

Sunset Route

SAN FRANCISCO, SAN DIEGO, LOS ANGELES, PHOENIX, TUCSON, DOUGLAS, BOWIE, EL PASO

Eastbound

Elev	(A)	Mls.	78 Daily	76 Daily	70 Daily	72 Daily
8	Lv San Francisco (3rd St.)	0	6 45	7 30	7 45	8 00
25	" Burlingame	16	7 08	8 53		8 22
59	" Palo Alto	30	7 30	9 15	8 24	8 38
86	" San Jose	47	7 58	9 40	8 55	9 06
21	Ar Watsonville Junc.	96	9 10	10 54	10 15	10 18
8	Lv Santa Cruz	0	▲ 8 10		▲ 8 10	8 25
22	" Watsonville	1	▲ 9 07		▲ 9 07	9 10
21	Ar Watsonville Junc.	20	▲ 9 15		▲ 9 15	9 15
21	Lv Watsonville Junc.	96	▲ 9 20	10 59	10 28	10 25
18	Ar Castroville	110	9 38			
45	Lv Pacific Grove	0	8 45		▲ 9 55	▲ 4 55
3	" Monterey	3	8 53		10 06	▲ 5 05
27	" Del Monte	4	8 57		10 10	▲ 5 07
43	Ar Salinas	18	9 25		10 50	▲ 5 40
18	Lv Castroville	110	9 38			
722	" Paso Robles Hot Springs	212	11 55		1 43	3 50
239	" San Luis Obispo	248	1 25	2 53	3 35	2 07
7	" Santa Barbara	367	5 15	6 05	7 35	6 45
425	" Glendale	464	7 48	8 36	10 18	8 19
293	Ar Los Angeles	471	8 15	9 00	10 50	8 45

Elev	(A)	Mls.	282-60-26	26	52	8 00
6	Lv San Francisco (Mkt. St.)	0	4 00	6 00	8 00	
219	" Fresno	206	12 10	12 10	1 55	
414	" Bakersfield	313	2 45	2 45	4 35	
425	" Glendale	464	8 18	8 18	9 55	
293	Ar Los Angeles	484	8 45	8 45	10 25	

Elev	(A)	Mls.	12	2	4	820
293	Lv Los Angeles	471	12 15	8 00	8 15	9 30
459	" Alhambra	478	12 43	8 28	8 43	9 58
409	" San Gabriel	481		8 33		
285	" El Monte	485		8 39		10 10
237	" Bassett	487		8 43		10 15
320	" Puente	491				10 20
855	" Pomona	504	1 25	9 10	9 25	10 50
980	" Ontario (To Upland)	510	1 36	9 21	9 36	11 06
952	" Guasti	514		9 27		11 12
1025	" South Fontana	520				11 20
1082	" Bloomington	525				11 27
964	" Colton	529	2 12	9 55	10 10	11 40
1071	" Loma Linda	533	2 18			11 47
1307	" Redlands	536	2 26	10 07	10 22	11 56
2559	" Beaumont	552	2 35	10 43	12 45	
2318	" Banning	558	2 41	10 53	1 03	
1779	" Cabazon	564	2 46			1 13
1125	" Palm Springs (w)	573	4 43	11 16	11 31	1 36
= 20	" Indio (p)	601	4 29	12 01	12 17	2 41
= 72	" Coachella	604	4 34			2 51
= 127	" Thermal	608	4 41	12 14		3 09
= 197	" Mecca	614	4 52	12 22		3 20
= 202	" Salton	628				3 45
= 130	Ar Niland	658	5 52	1 15	1 32	4 45
= 130	Lv Niland	658	5 52	1 15	1 32	
320	" Glamis	688				
353	" Ogilby, Calif.	707	7 03			
142	Ar Yuma, Ariz. (P.T.)	723	7 30	2 50	3 00	
= 130	Lv Niland	658				4 55
= 183	" Calpatrina	666				5 25
= 160	" Rockwood	672				5 35
= 117	" Brawley	677				6 08
= 618	" Imperial	686				6 28
= 49	Ar El Centro	690				6 58
= 130	Lv San Diego	0	6 45	6 45		8 40
100	" San Ysidro	16	7 17	7 17		9 39
125	" Agua Caliente	18	7 27	7 27		9 54
2830	" Jacumba	93	10 00	10 00		2 25
2330	" Carriso Gorge	101	10 24	10 24		3 05
= 49	Ar El Centro	148	12 01	12 01		5 53
= 49	Lv El Centro	148	12 05	12 05	6 05	7 05
= 16	" Heber	153	12 13	12 13	7 13	7 15
= 2	Ar Calexico	157	12 23	12 23	7 25	7 25
= 2	Lv Calexico	157	12 30	12 30		9 25
= 1	" Mexicali	158	12 36	12 36		9 40
121	" Algodones	208		1 57	1 57	11 52
125	" Cantu	209		1 59	1 59	12 04
142	Ar Yuma, Ariz. (P.T.)	218	2 25	2 25		12 30

Check Your Car!

We have greatly reduced the cost of shipping passengers' automobiles. First, you buy two standard one-way or round-trip tickets. These may be used by you and one other person. The charge for shipping your car is then figured on the basis of 3.6c a mile. You ride fast S. P. trains. Your car goes fast freight. (Minimum charge for two tickets and car \$54.)

Elev	(A)	Mls.	364 Daily	52-358 Mixed Daily
6	Lv San Francisco (Mkt. St.)	0	4 00	6 05
219	" Fresno	206	12 10	6 19
414	" Bakersfield	313	2 45	6 28
425	" Glendale	464	8 18	6 41
293	Ar Los Angeles	484	8 45	6 56

Eastbound

Elev	(B)	Mls.	12 Daily	2 Daily	4 Daily
142	Lv Yuma, Ariz. (M.T.)	723	8 45	4 10	4 20
189	" Blaisdell	737	9 05		
255	" Welton	761	9 39	5 05	5 13
540	" Mohawk	783		5 37	
494	" Aztec	803		6 06	
687	" Sentinel	817		6 25	
736	" Gila	846		7 15	
1173	" Maricopa	889		8 16	
1395	" Casa Grande	909		8 48	
1508	" Eloy	924		9 06	
1616	Ar Picacho	928		9 12	
255	Lv Welton	761	9 39		5 13
304	" Ming	767	9 48		
321	" Growler	772	10 08		
387	" Kofa	794	10 18		
535	" Hyder (Agua Caliente)	814	10 41		
876	" Hassayampa (Springs)	859			
888	" Buckeye	867	12 05		7 16
971	" Litchfield	884	12 25		
1074	Ar Phoenix (To Apache Trail)	897	12 55		8 00
1074	Lv Phoenix	897	1 15		8 15
1161	" Tempe	903	1 35		8 34
1229	" Mesa	911	1 50		8 48
1214	" Chandler	918	2 05		9 01
1425	" Coolidge	953	2 51		9 44
1616	Ar Picacho	974	3 15		10 06
1616	Lv Picacho	928	3 15	9 12	10 06
1864	" Red Rock	941	3 39	9 33	
1990	" Marana	952	3 51	9 48	
2057	" Rillito	957	3 58	9 57	
2152	" Cortaro	962	4 05	10 04	
2180	" Jaynes	968	4 15	10 10	
2386	Ar Tucson, Ariz.	974	4 30	10 25	11 05
2386	Lv Tucson, Ariz.	974	4 50	10 45	11 17
2536	" Polvo	978	5 00		
3014	" Esmond	981	5 19	11 14	
3238	" Vail	994	5 27	11 22	
3547	" Pantano	1003	5 44	11 40	
4064	" Mescal	1014	6 05	12 01	
3853	" Fairbank	1039	6 42		1 09
4030	" Lewis Springs	1049	6 58		
4183	" Hereford	1060	7 16		1 37
4580	" Naco	1072	7 35		2 02
4676	Ar Bisbee Jct.	1075	7 47		2 40
4676	Lv Bisbee Jct.	1083	8 15		3 06
5294	Lv Bisbee	0	7 15		1 30
4676	Ar Bisbee Jct.	8	7 40		1 55
4676	Lv Bisbee Jct.	1075	7 47		2 02
3970	Ar Douglas	1094	8 20		2 30
3970	Lv Douglas	1094	8 30		2 37
4599	" Casador, Ariz.	1108	8 55		
4119	" Rodeo, N. M.	1145	9 50		
4511	" Hachita	1197	10 55		4 56
4057	" Columbus	1241	11 59		
4103	" Mastodon, N. M.	1300	1 21		7 06
4064	Lv Mescal, Ariz.	1012		12 01	
3580	" Benson	1023		12 20	
4613	" Dragon	1045		1 04	
4225	" Cochise	1055		1 29	
4167	" Willie ox	1065		1 41	
3761	Ar Bowie	1089		2 32	
3761	Lv Bowie	1089		2 45	
3510	Ar Globe	1213		6 55	
3510	Lv Globe	0		9 10	
3761	Ar Bowie	124		1 20	
3761	Lv Bowie	1089		2 37	
3611	" San Simon, Ariz.	1105		2 54	
4347	" Steins, N. M.	1122		3 28	
4244	Lv Lordsburg	1139		3 55	
4244	Lv Lordsburg	1139		4 05	
4503	" Separ	1159		4 29	
4489	" Gage	1179		4 53	
4334	" Deming	1199		5 24	
4227	" Cambrey	1225		5 54	
4211	" Afton, N. M.	1250		6 26	
3719	Ar El Paso, Tex. (M.T.)	1266	1 50	7 30	7 35

(C) ALHAMBRA, PASADENA

Motor coach to downtown location in Pasadena connecting with Southern Pacific Trains at Alhambra.
Baggage handled in compartment.

Lv Alhambra (7:20)	*7 05	*12 45	9 13
Ar Pasadena	7 20	1 00	9 28
Lv Pasadena	*6 40	*12 15	*8 00
Ar Alhambra	6 55	12 30	8 15

(D) COLTON, RIVERSIDE (E)

COLTON, RIVERSIDE (P. E. Ry.)

Lv Colton for Riverside (26 minutes)	*6.39, *7.20, *7.58, *8.58, *9.58, *10.58, *11.58, *12.58, *1.58, *2.58, *3.58, *4.30, *5.20, *6.05, *7.30, *8.50, *10.14, *11.34.
Lv Riverside for Colton (26 minutes)	*5.50, *7.10, *7.56, *8.35, *9.35, *10.35, *11.35, *12.35, *1.38, *2.35, *3.35, *4.28, *5.05, *5.55, *6.38, *8.02, *9.20, *10.45.

(E) COLTON, SAN BERNARDINO

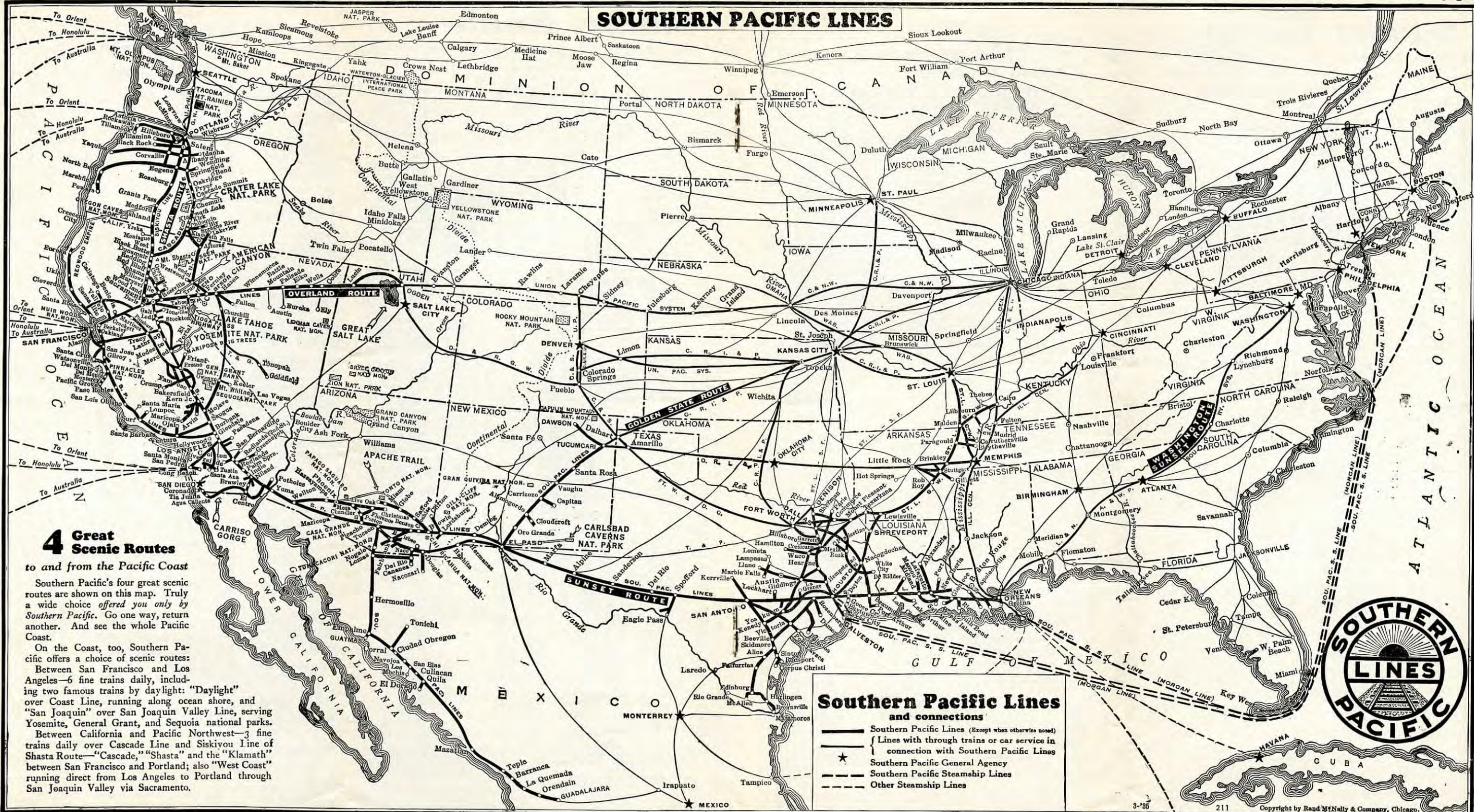
COLTON, SAN BERNARDINO (10 minutes)

Lv Colton for San Bernardino (10 minutes)	*6.16, *7.34, *8.23, *9.04, *10.04, *11.04, *12.04, *1.04, *2.04, *3.04, *4.04, *4.56, *5.34, *6.18, *7.04, *8.27, *9.46, *11.11.
Lv San Bernardino for Colton (10 minutes)	*6.30, *7.10, *7.48, *8.48, *9.48, *10.48, *11.48, *12.48, *1.48, *2.48, *3.48, *4.20, *5.10, *5.55, *7.20, *8.40, *10.05, *11.25.

(F) REDLANDS MOTOR BUS SERVICE

Auto Bus will meet all trains between *5.25 and *8.30 for passengers between Redlands, Second Street station and main line Redlands station, in each direction.
Telephone at station for calling Peterson Auto Co.
Baggage service, daily except Sunday.

SOUTHERN PACIFIC LINES



4 Great Scenic Routes

to and from the Pacific Coast

Southern Pacific's four great scenic routes are shown on this map. Truly a wide choice offered you only by Southern Pacific. Go one way, return another. And see the whole Pacific Coast.

On the Coast, too, Southern Pacific offers a choice of scenic routes:

Between San Francisco and Los Angeles—6 fine trains daily, including two famous trains by daylight: "Daylight" over Coast Line, running along ocean shore, and "San Joaquin" over San Joaquin Valley Line, serving Yosemite, General Grant, and Sequoia national parks.

Between California and Pacific Northwest—3 fine trains daily over Cascade Line and Siskiyou Line of Shasta Route—"Cascade," "Shasta" and the "Klamath" between San Francisco and Portland; also "West Coast" running direct from Los Angeles to Portland through San Joaquin Valley via Sacramento.

Southern Pacific Lines and connections

- Southern Pacific Lines (Except when otherwise noted)
- - - Lines with through trains or car service in connection with Southern Pacific Lines
- ★ Southern Pacific General Agency
- - - Southern Pacific Steamship Lines
- - - Other Steamship Lines



Sunset Route

EL PASO, SAN ANTONIO, HOUSTON, NEW ORLEANS, EL PASO, KANSAS CITY, ST. LOUIS, CHICAGO

Eastbound—Sunset Route

Elev.	(A)	Mls.	2 Daily	Elev.	(B)	Mls.	2 Daily	22-13 Daily	8 Daily
3719	Lv El Paso, Tex.(M.T.)	1286	8 00	661	Lv San Antonio, Tex.	1906	3 30	8 45	11 59
3664	" Ysleta (C.T.)	1298	f 9 29	662	" Converse	1919		f 9 11	f 12 23
3632	" Clint	1308	f 9 42	712	" Randolph Field (AirPort)	1922	f 3 57	f 9 15	f 12 26
3615	" Fabens	1315	f 9 52	713	" Schertz	1923		f 9 18	f 12 29
3583	" Tornillo	1321	f 10 00	698	" Cibolo	1925		f 9 23	f 12 34
3592	" Fort Hancock	1339	f 10 28	643	" Marion	1936		f 9 31	f 12 42
3568	" McNary	1344	f 10 35	555	" Hilda	1935		f 9 38	
3949	" Finlay	1356	f 10 57	550	" Seguin	1947	4 28	9 48	1 03
4117	" Small	1361	f 11 06	605	" Kingsbury	1956		f 10 03	1 19
4519	" Sierra Blanca	1379	f 11 45	407	" Luling	1967	5 00	10 21	1 45
4281	" Hot Wells	1402	f 12 18	456	" Harwood	1978	5 16	10 36	2 05
4193	" Dalberg	1407		367	" Waelder	1994	5 35	10 55	2 20
3942	" Lobo	1420	f 12 49	452	" Flatonia	2001	5 52	11 12	2 34
4432	Lv Valentine	1447	1 30	363	" Engle	2002			2 50
4432	Lv Valentine	1447	1 35	345	" Schulenberg	2013	6 14		3 23
4751	" Ryan	1463		410	" Weimar	2022	6 25		f 3 35
4905	" Conejo	1468		202	" Columbus	2036	6 50		f 4 08
4901	" Aragon	1473		189	" Alleton	2039			f 4 15
4694	" Marfa	1483	2 35	174	" Eagle Lake	2052	7 13		f 4 40
5074	" Paisano (Summit)	1491	f 2 58	425	" Lissie	2059			f 4 52
4484	" Alpine	1503	3 30	126	" East Bernard	2069			5 08
4642	" Altuda	1524		117	" Tavenner	2074			f 5 16
4043	" Marathon	1540	4 25	111	" Roseburg	2088	8 00		5 40
3881	" Haymond	1551	f 4 51	90	" Richmond	2085			5 50
3725	" Tesnus	1568	f 5 02	82	" Sugarland	2096			6 05
3663	" Rosenfeld	1575		47	Lv Houston (G. C. Sta.)	2117	9 00		7 00
3368	" Longfellow	1583	f 5 33	7	Lv Houston	2117	10 00	4	8 00
3093	" Emerson	1591		7	Ar Galveston	2174	11 30	9 40	9 40
2771	Ar Sanderson	1600	6 00	7	Lv Galveston	0	* 7 25	8 00	6 00
2771	Lv Sanderson	1600	6 09	47	Lv Houston	2117	9 30	10 30	8 05
2106	" Dryden	1621	f 6 45	51	" Crosby	2138			8 39
1912	" Thurston	1627		85	" Dayton	2152			8 58
1719	" Watkins	1635	f 7 08	34	" Liberty	2158	10 30		9 08
1508	" Lozier	1645	f 7 24	60	" Devers	2171			9 26
1815	" Pumpville	1652	f 7 42	45	" Nome	2181			9 41
1397	" Langtry	1673	8 15	22	" Beaumont	2201	11 30	12 35	10 20
1413	" Shumla	1684		16	" Orange	2223		12 02	10 55
1381	" Peecos River Bridge	1689		16	Ar Echo	2228			
1549	" Viaduct	1692		16	Ar Echo, Texas	2228			
1545	" Comstock	1702	9 19	16	" Vinton, Louisiana	2237		1 36	11 22
1417	" Cabra	1707		23	" Edgerly	2243			11 42
955	" Devil's River	1722	f 10 55	19	" Sulphur	2250		1 54	11 59
923	" McKeel	1728	f 9 06	16	" Lake Charles	2260	1 09	2 11	11 42
964	Ar Del Rio	1737	10 20	24	" Iowa	2272		f 2 28	f 12 19
964	Lv Del Rio	1737	10 30	23	" Welsh	2284		2 43	f 12 36
1086	" Standart	1756		29	" Roanoke	2288			f 12 45
1009	Ar Spofford	1774	11 28	29	" Jennings	2295	2 00	2 58	f 12 55
1009	Lv Spofford	1774		16	" Mermentau	2300			f 1 05
731	Ar Eagle Pass	1818		18	" Midland	2304			f 1 13
731	Lv Eagle Pass	0	12 30	23	" Crowley	2312	2 29	3 25	1 27
767	" Olmos	7	f 12 40	35	" Rayne	2319		3 40	1 38
820	" Paloma	15	f 1 05	39	" Ar Lafayette	2334	3 05	4 10	2 05
927	" Darling	23	f 1 23	39	" Ar Lafayette	2334	3 10	4 15	2 10
906	" Nora	29	f 1 38	34	" Cade	2346		4 34	f 2 30
959	Ar Spofford	34	2 00	21	" New Iberia	2353		4 47	f 2 50
1009	Lv Spofford	1774	11 28	19	" Jeanerette	2365		5 06	3 09
975	" Anachae	1782		13	" Baldwin	2374		f 5 20	
1042	" Pavo	1786		10	" Franklin	2378		5 28	3 32
1102	" Odlaw	1791		12	" Bayou Sale	2383		f 5 36	f 3 42
997	" Cline	1796	f 12 01	9	" Patterson	2392		5 48	3 56
1043	" Obi	1803		15	" Berwick	2398		f 6 02	f 4 09
939	" Hacienda	1808		14	" Morgan City	2399		6 07	4 14
931	" Uvalde	1814	12 35	13	" Boeuf	2406		f 6 20	
1005	" Ange	1819		11	" Gibson	2413		f 6 32	
965	" Knippa	1825	f 12 53	11	" Donner	2415		f 6 36	f 4 38
969	" Yucca	1831		17	" Schriever	2424		6 55	f 4 55
957	" Sabinal	1836	Sunset 1 10	25	" Lafourche	2427		7 18	5 18
1065	" Seco	1844		9	" Raceland Junc.	2439		7 32	5 32
881	" D'Hanis	1849	1 42	8	" Des Allemands	2447		f 7 46	
890	" Hondo	1857	1 37	10	" Boutte	2455	6 25	8 15	6 15
833	" Quiri	1862		12	Ar New Orleans (Carrollton Ave.)	2477	7 25	9 15	7 15
992	" Dunlay	1867	2 03	12	Ar New Orleans, La.(C.T.)	2479	7 35	9 25	7 25
778	" Noonan	1874			(Union Station)				
621	" Lacoste	1881	f 2 27						
661	Ar San Antonio	1899							
		1906	3 10						

Numbers following station names refer to other tables showing connecting lines.

*-Daily.
 #-Meals.
 †-Daily except Sunday.
 §-Sundays only.
 ‡-Does not stop; for information only.
 •-Motor train.
 #-Bus.
 •-Connects with bus, leave Del Rio 10 40, arrive Eagle Pass 12 40.
 P.T.-Pacific time.
 C.T.-Central time.
 M.T.-Mountain time.
 a-Galveston-Houston Interurban.
 b-Daily, except Mondays
 c-Daily mixed train.
 d-Stops on signal to detrain from El Paso or beyond.
 e-Stops on signal to entrain passengers for points where train is scheduled to stop.
 f-Flag stop to entrain or detrain passengers.
 g-Stops on flag for revenue passengers only.
 k Monday only.
 n-On Mondays arrives 7.10.
 v-Stops on flag to detrain revenue passengers from San Antonio and stations west destined to Gonzales; also to entrain passengers from Gonzales destined to Houston and stations east.
 Time shown in light figures indicates A. M.; Time shown in dark figures indicates P. M.
 No. 78-2 will stop at any station—San Jose to Santa Barbara to entrain passengers for Yuma and beyond. Los Angeles to Colton to entrain passengers for El Paso and beyond. Lordsburg to El Paso to entrain passengers for San Antonio or Tucumcari and beyond. El Paso and San Antonio to entrain or detrain passengers; at any station East of San Antonio to detrain passengers originating West of San Antonio, and points between San Antonio and Houston to entrain passengers destined to points East of Houston at which train is scheduled to stop.

Eastbound Golden State Route

Elev.	(C)	Mls.	2 Daily	4 Daily
3719	Lv El Paso, Tex. (M.T.)..Sou. Pac.	0	2 10	7 55
3889	" Fort Bliss	4	f 2 33	
3877	" Planeport	5	f 2 35	
3990	" Newman, N. M.	21	f 2 50	
4088	" Desert	46	f 3 07	
4170	" Orogrande	48	f 3 24	
4103	" Turquoise	54	f 3 31	
4027	" Valmont	75	f 3 55	
4323	" Alamogordo	87	4 16	10 10
4444	" Tularosa	100	4 37	
4562	" Three Rivers	115	f 5 01	
5019	" Oesura	127	f 5 20	
5439	Ar Carrizozo	144	5 45	11 25
5439	Lv Carrizozo	144	5 55	11 35
5801	" Coyote	156	6 15	
5902	" Largo	163	f 6 25	
6115	" Ancho	166	6 35	
6278	" Luna	171	f 6 42	
6538	" Tecolote	177	f 6 52	
6600	" Elda	182	f 6 59	
6637	" Gallinas	186	f 7 09	
6666	" Corina	194	7 25	
6466	" Varney	198	f 7 31	
6435	" Torrance	202	f 7 36	
6268	" Duran	213	f 7 51	
5942	" Vaughn	229	8 25	1 50
5851	" Tony	232	f 8 30	
5287	" Pastura	250	f 8 53	
5140	" Guadalupe	255	f 8 59	
4687	" Pintado	267	f 9 16	2 52
4600	" Santa Rosa	272	9 30	
4900	" Los Tanos	281	f 9 44	
4834	" Cuervo	289	9 57	
4553	" Newkirk	298	f 10 09	
4319	" Montayo	310	f 10 27	
4352	" Palomas	319	f 10 37	
4178	" Hargis	325	f 10 47	
4075	Ar Tucumcari, N.M.(M.T.)	331	11 00	4 15
4075	Lv Tucumcari, N. M. (C. T.)	0		5 35
3980	Ar Dalhart, Tex.....C.R.I.&P.	93		7 40
3980	Lv Dalhart, Tex.....C. & S.	93		10 36
5990	" Trinidad, Colo.	264		2 45
4656	" Pueblo, Colo.	358		5 30
5984	" Colorado Spgs., Colo.	402		6 30
5183	Ar Denver, Colo.....C. & S.	477		8 40
4075	Lv Tucumcari, N.M. (C.T.) CRI&P	0		5 25
3666	" Amarillo, Tex.	114		8 15
1327	" El Reno, Okla.	364		3 35
1199	" Oklahoma City, Okla.	391		4 35
266	" Little Rock, Ark.	845		3 25
262	Ar Memphis, Tenn.	877		6 45
4075	Lv Tucumcari, N.M. (C.T.) CRI&P	331	12 15	5 35
3980	Ar Dalhart, Tex.	423	2 25	7 35
3980	Lv Dalhart, Tex.	423	2 35	7 45
3497	" Texhoma, Okla.	475	3 40	
2851	" Liberal, Kan.	535	5 20	10 05
1541	" Hutchinson, Kan.	724	10 35	2 20
1506	" McPherson, Kan.	751	11 22	f 3 07
1340	" Herington, Kan.	787	1 00	4 30
892	" Topeka, Kan.	797	1 00	6 25
748	Ar Kansas City, Mo.	949	4 50	8 15
748	Lv Kansas City, Mo.	0	11 59	11 59
480	Ar St. Louis, Mo.	296	7 23	7 23
748	Lv Kansas City, Mo.	0	5 45	11 59
796	" Des Moines, Ia.	230	11 45	f 7 05
432	" St. Paul, Minn.	490	7 15	2 00
854	Ar Minneapolis, Minn.	501	8 00	2 50
748	Lv Kansas City, Mo.....CRI&P	949	5 45	9 00
606	" Davenport, Ia.	1284	2 00	
590	Ar Chicago, Ill.	1459	6 59	9 00

(H) DEL RIO—EAGLE PASS

* 7 45 *10 40 Lv Del Rio.....Ar 7 00
 # 9 30 12 40 Ar Eagle Pass.....Lv # 5 00

SPOFFORD—EAGLE PASS

c5 00 0 Lv Spofford, Tex. Ar 2 00
 7 15 34 Ar Eagle Pass.....Lv 11 c55

(E) HOUSTON—BREMOND—WACO

13	65	65	Mixed	Mls.	14	66
*11 25	*11 30	f 9 20	0	Lv Houston	* 6 55	n 6 15
*#3 45	k 3 25	b 2 45	0	Lv Bremond	# 2 20	

Sunset Route

TEXAS AND LOUISIANA LINES—LOCAL SERVICE IN TEXAS

NEW IBERIA, MIDLAND AND EUNICE

521 Mixed	527 Mixed	519 Mixed	(A)	520 Mixed	528 Mixed	522 Mixed
12 30	8 30	8 00	0 Lv New Iberia, La.	10 20	3 10	2 30
12 45	8 42	8 15	5 " Davids.	10 05	2 55	2 05
12 48	8 44	8 20	5 " Ar I. & V. Junction.	10 00	2 53	2 00
1 15	8 45	8 45	10 " Ar Salt Mine.	9 45	2 50	1 45
	8 47		6 Lv Rynella.		2 45	
	8 51		7 " Lee.		2 35	
	8 55		9 " Poufette.		2 31	
	9 05		11 " Bob Acres.		2 20	
	9 30		12 " Deleambre.		2 16	
	10 00		18 " Erath.		2 05	
	11 00		21 " Abbeville.		1 20	
	11 15	515 Mixed	30 " Kaplan.		12 30	516 Mixed
	11 45	Sun. Only	37 " Mulvey.		12 01	Sun. Only
	11 55		45 " Gueydan.		11 45	
	12 40		49 " Riceville.		11 20	
	12 40	12 40	56 " Ar Midland.		11 00	
	12 50	12 50	56 Lv Midland.		11 00	
	1 05	1 05	60 " Egan.		10 15	10 15
	1 17	1 17	67 " Iota.		10 00	10 00
	2 50	2 50	79 " Frey.		9 45	9 45
			Ar Eunice.		9 30	9 30

(B) FRANKLIN, BALDWIN AND CYPREMOET

Mixed	Lv	Ar	Mixed
*10 00	Lv Franklin, La.	Ar	8 45
10 15	Ar Baldwin	Lv	8 30
10 45	Lv Baldwin	Ar	8 15
11 00	Lv Caneland.	Ar	7 50
11 20	Ar Caneland.	Lv	7 30
12 10	Ar Cypremoe, La.	Lv	*7 00

(C) LAFAYETTE, ALEXANDRIA

835 Mixed	Lv	Ar	834 Mixed
* 8 30	Lv Lafayette,	Ar	2 00
9 00	" Carencro.	Lv	1 30
9 25	" Sunset.	Ar	1 00
10 50	" Opelousas.	Ar	12 01
11 10	" Washington.	Ar	11 10
11 35	" Garland.	Ar	11 50
11 15	" Barbreck.	Ar	11 19
12 28	" Gold Dust.	Ar	10 10
12 50	" Eola.	Ar	10 00
1 20	" Cheneyville.	Ar	9 35
3 00	Ar Alexandria, La.	Lv	* 8 30

(D) PARIS, COMMERCER, GREENVILLE, TERRELL, ENNIS

40	Lv	Ar	39
* 4 30	Lv Paris, Tex.	Ar	11 30
4 50	" Howland.	Ar	11 06
5 05	" Enloe.	Ar	10 51
5 14	" Cooper.	Ar	10 42
5 23	" Klondike.	Ar	10 31
5 44	" Commerce.	Ar	10 12
6 10	" Greenville.	Ar	9 44
6 47	" Quinlan.	Ar	9 04
7 18	" Terrell.	Ar	8 38
7 30	" Cartwright.	Ar	8 22
7 43	" Kaufman.	Ar	8 10
8 12	" Rosser.	Ar	7 37
8 32	" Crisp.	Ar	7 15
9 00	Ar Ennis.	Lv	* 7 00

(E) LAKE CHARLES, DE RIDDER

Mixed	Lv	Ar	Mixed
* 6 30	Lv Lake Charles, La.	Ar	1 15
7 30	" Pulton.	Ar	12 05
7 55	" Longville.	Ar	11 45
8 30	" Bannister.	Ar	11 25
8 50	" Bon Ami.	Ar	11 10
9 00	Ar De Ridder.	Lv	* 11 00

(G) LAFAYETTE, ATCHAFALAYA RIVER

601-603 Mixed	Lv	Ar	604 Mixed
*12 01	Lv Lafayette, La.	Ar	10 40
12 45	Ar Breaux Bridge.	Lv	10 00
7 55	Lv Nina.	Ar	9 35
8 10	" Lenora.	Ar	9 20
8 30	Ar Atchafalaya River.	Lv	* 9 00

(H) CADE, PORT BARRE

603-601 Mixed	Lv	Ar	602 Mixed
* 4 20	Lv Cade, La.	Ar	4 00
4 55	" Delacroix.	Lv	3 14
4 58	" St. Martinville.	Ar	3 10
7 30	Ar Breaux Bridge.	Lv	3 00
12 45	Lv Breaux Bridge.	Ar	3 00
1 15	" Gecko.	Ar	2 27
1 27	" De Clouet.	Ar	2 27
1 50	Ar Arnaudville.	Lv	* 2 10
	" Leonville.	Lv	
	Ar Port Barre, La.	Lv	

Through Air-Conditioned Pullman direct to the SAN DIEGO EXPOSITION on Sunset Limited

(K) HOUSTON, NACOGDOCHES AND SHREVEPORT

28 Daily	26 Daily	Mls.	25 Daily	27 Daily
10 15	8 40	0	Lv Houston, Tex.	5 05
			(G. C. Sta.) Ar	7 30
10 55	9 13	18	" Humble.	4 27
11 15	9 31	29	" New Caney.	4 07
11 43	9 58	44	" Cleveland.	3 42
12 07	10 18	56	" Shepherd.	3 20
12 30	10 40	72	" Livingston.	2 45
12 53	11 02	78	" New Willard.	2 33
1 17	11 23	88	" Corscow.	2 15
1 29	11 34	94	" Corrigan.	2 05
1 58	11 58	108	" Diboll.	1 40
2 25	12 20	119	" Ar Lufkin.	1 20
2 35	12 40	119	" Lufkin.	1 00
3 40	1 20	139	" Nacogdoches.	1 00
3 57	1 40	149	" Appleby.	11 25
4 20	2 04	159	" Garrison.	11 35
4 40	2 20	168	" Timpson.	11 20
4 59	2 40	177	" Tampa.	11 03
5 22	3 02	189	" Joaquin, Tex.	10 40
5 30	3 12	192	" Logansport, La.	10 31
5 48	3 30	201	" Longstreet.	10 15
6 00	3 42	208	" Keatchie.	10 04
7 00	4 40	232	Ar Shreveport, La.	9 15
			(K.C.S.Sta.) Lv	11 00

(M) HOUSTON, HEMPSTEAD, AUSTIN

17-45 Daily	43 Daily	Mls.	42 Daily	46-20 Daily
11 30	8 05	0	Lv Houston, Tex.	6 38
			(G. C. Sta.) Ar	6 15
12 50	9 30	49	" Hempstead.	5 15
1 29	10 09	71	" Brenham.	4 35
1 50	10 34	83	" Burton.	4 13
2 40	11 10	105	" Ledbetter.	3 52
3 06	11 31	117	" Giddings.	3 36
3 31	11 48	127	" Paige.	3 14
3 55	12 06	137	" McJade.	2 57
4 24	12 30	149	" Elgin.	2 36
5 15	1 10	164	" Manor.	2 10
			Ar Austin, Tex.	1 40

(N) AUSTIN, LAMPASAS

253 Mixed	Mls.	Lv	Ar	254 Mixed
* 7 00	0	Lv Austin, Tex.	Ar	6 00
8 25	17	" McNeil.	Ar	4 50
8 54	26	" Cedar Park.	Ar	4 22
9 39	39	" Liberty Hill.	Ar	3 32
9 44	44	" Grover.	Ar	3 00
10 05	49	" Bertram.	Lv	2 15
11 00	61	" Ar Burnet.	Ar	9 15
11 00	61	" Burnet.	Ar	8 45
11 25	67	" Sudduth.	Ar	7 45
11 35	70	" Fairland.	Ar	7 30
12 01	79	" Marble Falls.	Ar	6 05
1 15	99	" Kingsland.	Lv	6 50
1 40	0	Lv Burnet.	Ar	1 40
1 11	11	" Lake Victor.	Ar	1 40
11 55	23	Ar Lampasas, Tex.	Lv	11 25

(P) DALLAS, CALDWELL, GIDDINGS

20-21	Mls.	22-13
* 9 45	0	Lv Dallas, Tex.
		(Un. Sta.) Ar
10 45	34	" Ennis.
11 25	55	" Corsicana.
12 25	84	" Mexia.
1 35	122	" Bremond.
2 30	144	" Hearne.
4 54	244	" Caldwell.
5 42	4 20	" Giddings.
6 50	5 15	" Flatonia.
7 07	5 31	" Waelder.
7 42	6 04	" Luling.
8 17	6 37	" Seguin.
8 49	7 07	" Randolph Field.
9 20	7 45	Ar San Antonio.

(R) WACO, GIDDINGS, YOAKUM

21	51 Daily	Mls.	52 Daily	22
3 15	0	Lv Waco, Tex. (Union S.)	Ar	12 01
3 57	22	" Chilton.	Lv	11 13
4 11	28	" Lott.	Ar	10 59
4 21	33	" Travis.	Ar	10 49
4 31	38	" Rosebud.	Ar	10 40
4 39	42	" Burlington.	Ar	10 32
4 46	45	" Ben Arnold.	Ar	10 25
5 03	53	" Cameron.	Ar	10 07
5 19	60	" Minerva.	Ar	9 53
5 34	66	" Rockdale.	Ar	9 38
5 51	73	" Hicks.	Ar	9 22
6 07	79	" Tanglewood.	Ar	9 16
6 19	86	" Lexington.	Ar	9 05
6 50	104	" Lincoln.	Ar	8 46
7 10	110	Ar Giddings.	Lv	8 30
7 17	112	" Northrup.	Ar	8 16
7 22	117	" Winchester.	Ar	8 04
7 27	122	" West Point.	Ar	7 56
7 41	132	" Muldoon.	Ar	7 38
8 00	140	" Flatonia.	Ar	7 20
8 17	150	" Moulton.	Ar	7 04
8 37	160	" Shiner.	Ar	6 47
9 05	171	Ar Yoakum, Tex.	Lv	* 6 20

(T) BEAUMONT, JACKSONVILLE AND DALLAS

155 Mixed	Mls.	156 Mixed
* 8 00	0	Lv Beaumont, Tex. (9.27)
8 20	9	" Voth.
8 53	25	" Kountze.
9 24	36	" Village Mills.
9 24	40	" Hyatt.
9 30	43	" Warren.
9 40	47	" Hillister.
10 00	55	" Woodville.
10 10	58	" Doucette.
10 25	64	" Colmesneil.
10 45	74	" Rockland.
11 10	85	" Zavalla.
11 45	97	" Huntington.
12 45	122	Ar Nacogdoches.
1 00	122	Lv Nacogdoches.
1 30	134	" Caro.
1 37	136	" Trawick.
1 52	142	" Cushing.
2 10	147	" Sacul.
2 25	153	" Reklaw.
2 40	159	" Ponta.
2 50	163	" Gallatin.
3 20	172	Ar Jacksonville.
3 35	172	Lv Jacksonville.
4 10	182	" Cuney.
4 25	184	" Frankston.
4 40	200	" Poynor.
5 15	213	" Athens.
5 40	226	" Eustace.
5 55	233	" Mabank.
6 20	242	" Kemp.
6 50	253	" Kaufman.
7 17	264	" Crandall.
7 33	269	" Seagoville.
7 45	274	" Kleberg.
8 45	291	Ar Dallas, Tex.

(V) VICTORIA, PORT LAVACA

* 8 30	* 7 35	0	Lv Houston	Ar	5 45	7 45
9 30	8 45	35	" Rosenberg.	Ar	4 35	6 42
10 08	9 30	63	" Wharton.	Ar	3 50	5 58
11 45	11 15	129	Ar Victoria.	Lv	* 1 45	* 4 10
7 00	129	Lv Victoria.	Ar	10 55		
7 24	135	" Guadalupe.	Ar	10 32		
7 48	148	" Placedo.	Ar	10 04		
8 50	160	Ar Port Lavaca, Tex.	Lv	19 05		

*-Daily. f-Daily except Sunday. ¶-Daily except Monday.
 b-Lv Giddings 5.42, Ar Flatonia 6.50, Mondays only.
 a-Monday only.
 f-Flag stop to entrain or detain passengers. ¶-Motor Train.
 ▲-Motor between Hearne and San Antonio.

*Daily except Monday. On Monday only Train 21 leaves Hearne 4.00 a. m. and arrives San Antonio 9.20 a. m., which provides a passenger connection with Train 18 leaving Dallas 11.30 p. m., Sunday.

Time shown in light figures indicates A.M.; Time shown in dark figures indicates P.M.

Sunset Route

TEXAS AND LOUISIANA LINES—LOCAL SERVICE AND CONNECTIONS

SAN ANTONIO AND HOUSTON

378	313-310	Mls.	(A)	309-314	377
.....	9 30	0	Lv San Antonio	Ar 6 50
.....	10 39	31	" Floresville	" 5 19
.....	11 04	46	" Falls City	" 4 45
.....	11 23	57	" Karnes City	" 4 15
Mixed	11 34	63	Ar Kenedy	Lv 4 00	Mixed
8 40	4 22	73	" Runge	" 10 57	3 15
9 10	4 36	80	" Nordheim	" 10 43	2 40
10 10	4 52	88	" Yorktown	" 10 27	1 40
11 00	5 28	104	Ar Cuero	Lv 9 50	12 130
.....	5 28	104	Lv Cuero	Ar 9 50
.....	6 10	121	Ar Yoakum	Ar 9 15
.....	6 20	121	Lv Yoakum	Ar 9 10
.....	6 32	127	" Sweet Home	" 8 58
.....	6 54	138	" Hallettsville	" 8 37
.....	7 26	155	" Sheridan	" 8 01
.....	7 39	162	" Rook Island	" 7 48
.....	8 10	177	Ar Eagle Lake	Lv 7 15
.....	8 10	177	Lv Eagle Lake	Ar 7 10
.....	8 40	194	" Wallis	" 6 42
.....	8 52	201	" Simonton	" 6 31
.....	9 02	206	" Fulshear	" 6 23
.....	9 27	218	" Clodine	" 6 02
.....	10 15	241	Ar Houston (G.C.Sta.)	Lv 5 20

THROUGH PULLMAN: ST. LOUIS, MO. AND BROWNSVILLE, TEX.

Southbound—Frisco—M-K-T TEXAS SPECIAL, St. Louis to Dallas; "SP" SUNBEAM, Dallas to Houston; "SP" BORDER LIMITED, Houston to Brownsville.

Connections at Brownsville with Pan-American Air-Ways for Mexico.

Northbound—"SP" BORDER LIMITED, Brownsville to Houston; "SP" SUNBEAM, Houston to Dallas; M-K-T—Frisco BLUE-BONNET, Dallas to St. Louis.

1-14	303-313	Mls.	(E)	314-304	302
6 30	Lv St. Louis Frisco	(M.K.&T.)	Ar	11 30
10 10	Lv Kansas City	"	Ar	7 15
12 15	Ar Dallas	"	Lv	6 10
12 20	Lv Dallas	(Sou. Pac.)	Ar	5 55
6 55	Ar Houston	"	Lv	11 25
8 30	Lv Houston	"	Ar	7 45
8 00	Ar Brownsville	"	Lv	8 00

HOUSTON, SAN ANTONIO, DALLAS, DENISON, FORT WORTH, COLORADO SPRINGS, DENVER

7-17	7-19	1-13	3-43	(G)	20-8	18-8	14-2	42-2
Daily	Daily	Daily	Daily	Mls.	Daily	Daily	Daily	Daily
9 35	9 35	10 40	9 00	0	Lv New Orleans, La. (U. Sta.)	Ar	7 25	7 35
8 20	8 20	9 00	7 25	362	Ar Houston, Tex. (G.C.Sta)	Lv	8 05	9 30
*7 25	*7 25	a8 00	a6 00	0	Lv Galveston, Tex.	Ar	9 40	9 30
9 05	9 05	9 30	7 30	57	Ar Houston	Lv	8 00	a8 00
11 30	7 20	11 25	8 05	0	Lv Houston, Tex.	Ar	6 15	6 55
.....	7 42	8 27	8 27	11	" Fairbanks	"	7 45	7 35
.....	10 15	8 59	34	40	" Hoekley	"	7 50	7 35
.....	10 21	8 59	40	40	" Waller	"	7 50	7 35
.....	10 27	9 14	45	50	" Prairie View	"	7 50	7 35
.....	10 42	9 26	45	50	" Hempstead	"	7 50	7 35
.....	10 51	9 26	54	50	" Howth	"	7 50	7 35
.....	11 01	9 26	61	50	" Courtney	"	7 50	7 35
.....	11 17	12 49	70	50	" Navasota	"	7 50	7 35
.....	11 37	12 49	75	50	" Nettle	"	7 50	7 35
.....	11 45	12 49	79	50	" Millican	"	7 50	7 35
.....	11 59	12 49	87	50	" Wellborn	"	7 50	7 35
.....	12 13	1 23	94	50	" College Station	"	7 50	7 35
.....	1 19	1 28	98	50	" Bryan	"	7 50	7 35
.....	1 45	2 03	119	50	Ar Hearne	Ar	7 45	7 35
.....	2 05	2 03	8 45	50	Lv San Antonio	Ar	7 45	7 35
.....	9 48	9 48	35	50	" Seguin	"	7 45	7 35
.....	10 55	10 55	38	50	" Waelder	"	7 45	7 35
.....	11 12	11 12	89	50	" Flatonia	"	7 45	7 35
.....	12 18	12 18	127	50	" Giddings	"	7 45	7 35
.....	1 06	1 06	137	50	" Caldwell	"	7 45	7 35
.....	2 00	2 00	187	50	Ar Hearne	Ar	7 45	7 35
.....	1 15	2 03	119	50	Lv Hearne	Ar	7 45	7 35
.....	1 30	2 15	127	50	" Calvert	"	7 45	7 35
.....	2 00	2 33	142	50	" Bremond	"	7 45	7 35
.....	2 40	2 52	152	50	" Kosse	"	7 45	7 35
.....	3 00	3 04	160	50	" Thornton	"	7 45	7 35
.....	4 03	3 17	168	50	" Groesbeck	"	7 45	7 35
.....	4 25	3 36	180	50	" Mexia	"	7 45	7 35
.....	3 53	3 47	187	50	" Wortham	"	7 45	7 35
.....	5 14	4 22	209	50	" Corsicana	"	7 45	7 35
.....	5 50	4 50	230	50	Ar Ennis	Ar	7 45	7 35
.....	5 55	4 55	230	50	Lv Ennis	Ar	7 45	7 35
.....	7 00	5 55	264	50	Ar Dallas (Union Sta.)	Ar	7 45	7 35
.....	6 00	6 00	0	50	Lv Ennis	Ar	7 45	7 35
.....	6 25	5 25	3	50	" Garrett	"	7 45	7 35
.....	6 44	5 44	15	50	" Waxahachie	"	7 45	7 35
.....	7 03	6 04	26	50	" Midlothian	"	7 45	7 35
.....	7 45	6 45	38	50	" Mansfield	"	7 45	7 35
.....	8 10	7 10	56	50	Ar Ft. Worth, Tex. (Un. Sta.)	Lv	7 45	7 35
.....	11 10	11 10	0	50	Lv Ft. Worth, Tex. F.W.&C. Ar	Ar	7 45	7 35
.....	7 00	6 30	728	50	Ar Colorado Springs	Ar	7 45	7 35
.....	9 40	8 40	802	50	Ar Denver, Colo., C. & S. Lv	Ar	7 45	7 35
.....	8 05	8 05	264	50	Lv Dallas, Tex.	Ar	7 45	7 35
.....	9 06	8 06	296	50	" McKinney	"	7 45	7 35
.....	9 18	8 18	303	50	" Melissa	"	7 45	7 35
.....	10 10	9 10	313	50	" Van Alstyne	"	7 45	7 35
.....	10 30	9 30	329	50	" Sherman	"	7 45	7 35
.....	10 30	9 30	338	50	Ar Denison, Tex.	Lv	7 45	7 35

SAN ANTONIO, VICTORIA, HOUSTON

* 9 30	0	Lv San Antonio, Tex. <th>Ar</th> <th>3 00</th>	Ar	3 00
10 25	26	" Lavernia	"	2 03
10 49	39	" Stockdale	"	1 40
11 10	67	" Nixon	"	1 21
11 43	72	" Westhoff	"	12 41
12 15	86	" Cuero	"	12 15
1 15	114	Ar Victoria	Lv	11 25
1 45	114	Lv Victoria	Ar	11 15
3 50	206	" Wharton	"	9 30
4 35	280	" Rosenberg	"	8 45
5 45	243	Ar Houston	Lv	7 35

HOUSTON, SAN ANTONIO, BROWNSVILLE

* 7 35	8 30	0	Lv Houston, Tex. (G.C.Sta) <th>Ar</th> <th>7 45</th> <th>5 45</th>	Ar	7 45	5 45
8 19	26	0	" Sugarland (Sou. Pac.)	Ar	7 03	4 47
8 34	34	0	" Richmond	"	6 50	4 41
8 45	37	0	" Rosenberg	"	6 42	4 35
8 58	45	0	" Beasley	"	6 42	4 35
9 06	51	0	" Kenedon	"	6 42	4 35
9 15	57	0	" Hungerford	"	6 42	4 35
9 30	63	0	" Wharton	"	6 42	4 35
9 45	71	0	" Pierce	"	6 42	4 35
9 55	76	0	" El Campo	"	6 42	4 35
10 10	87	0	" Louise	"	6 42	4 35
10 22	95	0	" Ganado	"	6 42	4 35
10 37	104	0	" Edna	"	6 42	4 35
11 01	121	0	" Telfer	"	6 42	4 35
11 15	129	0	Ar Victoria	Lv	6 42	4 35
11 50	129	0	Lv Victoria	Ar	6 42	4 35
12 14	145	0	" Fannin	"	6 42	4 35
12 28	154	0	" Goliad	"	6 42	4 35
12 53	170	0	" Berclair	"	6 42	4 35
1 15	185	0	Ar Beeville	Lv	6 42	4 35
1 30	13	0	Lv San Antonio, Tex.	Ar	6 50	5 50
10 01	13	0	" Southton	"	6 50	5 50
10 12	20	0	" Elmendorf	"	6 50	5 50
10 17	22	0	" Saspameo	"	6 50	5 50
10 39	34	0	" Floresville	"	6 50	5 50
10 51	41	0	" Poth	"	6 50	5 50
11 04	48	0	" Falls City	"	6 50	5 50
11 09	51	0	" Hobson	"	6 50	5 50
11 23	59	0	" Karnes City	"	6 50	5 50
11 34	65	0	Ar Kenedy	Lv	6 50	5 50
11 50	65	0	Lv Kenedy	Ar	6 50	5 50
12 21	81	0	" Pettus	"	6 50	5 50
12 32	88	0	" Normanna	"	6 50	5 50
1 00	97	0	Ar Beeville	Lv	6 50	5 50
1 25	1 25	0	Lv Beeville	Ar	6 50	5 50
1 45	1 45	0	Ar Skidmore	Ar	6 50	5 50
1 55	1 55	0	" Tynan	"	6 50	5 50
2 07	2 07	0	" Mathis	"	6 50	5 50
2 19	2 19	0	" Sandia	"	6 50	5 50
2 28	2 28	0	" Orange Grove	"	6 50	5 50
3 00	3 00	0	" Alice	"	6 50	5 50
3 37	3 37	0	" Premont	"	6 50	5 50
3 54	3 54	0	" Fallfurias	"	6 50	5 50
4 55	4 55	0	" Linn	"	6 50	5 50
5 29	5 29	0	" Edinburg	"	6 50	5 50
5 41	5 41	0	" McAllen	"	6 50	5 50
6 10	6 10	0	" Edinburg	"	6 50	5 50
6 35	6 35	0	" Elsa	"	6 50	5 50
6 40	6 40	0	" Edcouch	"	6 50	5 50
6 54	6 54	0	" Santa Rosa	"	6 50	5 50
7 10	7 10	0	" Harlingen	"	6 50	5 50
8 00	8 00	0	Ar Brownsville, Tex.	Lv	6 50	5 50

(C) HOUSTON, WHARTON, PALACIOS

* 7 35	0	Lv Houston, Tex. (G.C.Sta) <th>Ar</th> <th>5 45</th>	Ar	5 45
8 45	37	" Rosenberg	"	4 35
9 30	63	Ar Wharton	Lv	3 50
9 55	70	Lv Wharton	Ar	3 30
f 9 50	70	" Burr	"	3 07
9 55	73	" Lago	"	3 01
9 59	74	" Boiling	"	2 57
10 05	78	" Don-Tol.	"	2 51
10 10	81	" Pledger	"	2 45
10 18	86	" Podo	"	2 36
10 22	88	" Ashwood	"	2 3

San Diego & Arizona Eastern Ry. Co.

"SAN DIEGO SHORT LINE"

SAN DIEGO, TIJUANA, AGUA CALIENTE, CARRISO GORGE, YUMA, EL PASO, KANSAS CITY, ST. LOUIS, CHICAGO, EL PASO, SAN ANTONIO, HOUSTON, NEW ORLEANS

Read Down			Mls.	(A)	Elev	Read Up			
4-362-4	4-362-2	Daily				1-363-3	3-363-3	357-51	
* 8 40	6 45	6 45	0	Lv San Diego, Calif.	S.D.&A.E. Ar	13	8 45	8 45	4 20
9 39	7 17	7 17	16	" San Ysidro	" " " "	100	8 10	8 10	3 17
9 49	7 22	7 22	16	" Tijuana (Mex.)	" " " "	775	8 05	8 05	3 06
f 9 54	f 7 27	f 7 27	18	" Agua Caliente (Mex.)	" " " "	125	f 8 00	f 8 00	f 3 00
f 10 47	f 8 00	f 8 00	37	" Redondo (Mex.)	" " " "	125	f 7 30	f 7 30	f 2 08
11 44	8 37	8 37	53	" Tecate (Mex.)	" " " "	1690	f 7 01	f 7 01	1 25
f 12 07	f 8 51	f 8 51	60	" Lindero (Mex.)	" " " "	2120	f 6 47	f 6 47	f 1 01
f 12 34	9 05	9 05	66	" Campo (Calif.)	" " " "	2590	6 36	6 36	f 12 34
2 25	10 00	10 00	92	" Jacumba	" " " "	2830	5 37	5 37	10 57
f 3 05	f 10 24	f 10 24	101	" Carriso Gorge	" " " "	2380	f 5 09	f 5 09	f 10 24
4 38	11 19	11 19	123	" Coyote Wells	" " " "	290	f 4 00	f 4 00	8 33
f 5 16	f 11 37	f 11 37	134	" Diekiland	" " " "	=10	f 3 40	f 3 40	f 7 44
f 5 28	f 11 45	f 11 45	140	" Soeley	" " " "	=44	f 3 32	f 3 32	f 7 32
5 53	12 01	12 01	148	Ar El Centro	S. D. & A. E. Lv	=49	3 15	3 15	7 10
.....	12 05	12 05	148	Lv El Centro	Sou. Pac. Ar	=49	3 10
.....	12 23	12 23	157	Ar Calexico	" " " "	=2	2 52
.....	2 25	2 25	218	Ar Yuma (P.T.)	" " " "	142	1 00
.....	4 10	4 10	218	Lv Yuma (M. T.)	" " " "	142	12 40
.....	10 45	10 45	514	" Tucson	" " " "	2386	5 50
.....	7 30	7 30	824	Ar El Paso (M. T.)	" " " "	3721	8 55
.....	8 00	8 00	824	Lv El Paso (M.T.) (Un.Sta.)	" " " "	3721	8 35
.....	3 10	3 10	1444	Ar San Antonio (C. T.)	" " " "	661	3 10
.....	9 05	9 05	1655	Ar Houston (G. C. Sta.)	" " " "	64	9 15
.....	7 35	7 35	2018	Ar New Orleans (Un. Sta.)	" " " "	7	10 40
6 00	12 05	148	Lv El Centro	Sou. Pac. Ar	=49	3 10	6 55
6 30	12 23	157	Ar Calexico (U. S.)	" " " "	=2	2 52	6 30
9 25	12 30	157	Lv Calexico	I. C. Ar	=2	2 42	1 15
9 40	12 36	158	Lv Mexicali (Mex.)	" " " "	=1	2 38	1 00
11 52	1 57	209	" Algodones	" " " "	121	1 24	10 40
12 04	1 59	210	" Cantu (U. S.)	" " " "	125	1 22	10 35
12 30	2 25	218	Ar Yuma (P. T.)	Sou. Pac. Lv	142	1 00	*10 00
.....	4 20	218	Lv Yuma (M. T.)	" " " "	142	1 20
.....	8 15	392	" Phoenix	" " " "	1074	8 35
.....	11 17	514	" Tucson	" " " "	2386	5 30
.....	7 35	824	Ar El Paso (M. T.)	" " " "	3721	8 50
.....	7 55	824	Lv El Paso (M. T.)	" " " "	3721	8 30
.....	8 15	1775	Ar Kansas City (C.T.) C.R.I. & P.	Lv	766	9 40
.....	11 55	1775	Lv Kansas City	" " " "	766	7 15
.....	7 30	2071	Ar St. Louis	" " " "	600	11 45
.....	11 59	1775	Lv Kansas City, Mo.	" " " "	766	7 30
.....	2 00	2265	Ar St. Paul, Minn.	" " " "	732	5 40
.....	2 50	2276	Ar Minneapolis, Minn.	" " " "	854	5 00
.....	9 00	1775	Lv Kansas City	C. R. I. & P. Ar	766	9 00
.....	9 00	2291	Ar Chicago	" " " "	603	8 45

Nos. 4-362-4 and Nos. 3-363-3:
Standard Sleepers: San Diego and Chicago.
Observation Car: San Diego, Calexico, Chicago.
Dining Car: For meal service.
Club Car: Yuma and Chicago.
Coaches: San Diego and El Paso.
Eastbound on Nos. 4-362-2.
Westbound on Nos. 1-363-3.

Nos. 4-362-2 and Nos. 1-363-3:
Standard Sleeper: San Diego and New Orleans. Air-Conditioned.
Lounge Car: San Diego, Calexico and New Orleans.
Dining Car: For meal service.
Coaches: San Diego and El Paso (change Coaches at El Paso).
Nos. 52-358 and 357-51:
Coaches: San Diego, El Centro, Calexico, Yuma (mixed train).

	No. 4	No. 52
Lv San Diego (SD&AE)	*6 45	* 8 40
" San Ysidro	7 17	9 39
" Tijuana	7 22	9 49
Ar Agua Caliente	f 7 27	f 9 54

	No. 51	No. 3
Lv Agua Caliente (SD & A.E)	3* f00	*f8 00
" Tijuana	3 06	8 05
" San Ysidro	3 17	8 10
Ar San Diego	4 20	8 45

THE SHORTEST LINE TO SAN DIEGO

Via Carriso Gorge and Agua Caliente Through Air-Conditioned Pullmans from Chicago and New Orleans

*-Daily. f-Flag to entrain or detrain passengers. =Below sea level.
Time shown in light figures indicates AM; Time shown in dark figures indicates PM.

SAN DIEGO EXPOSITION

The California Pacific International Exposition now being held in San Diego offers the finest vacation opportunity in many years—a World's Fair in a delightful vacation setting. San Diego itself is a perfect place to play. Nearby are Coronado, La Jolla, Los Angeles and all the attractions of Southern California.

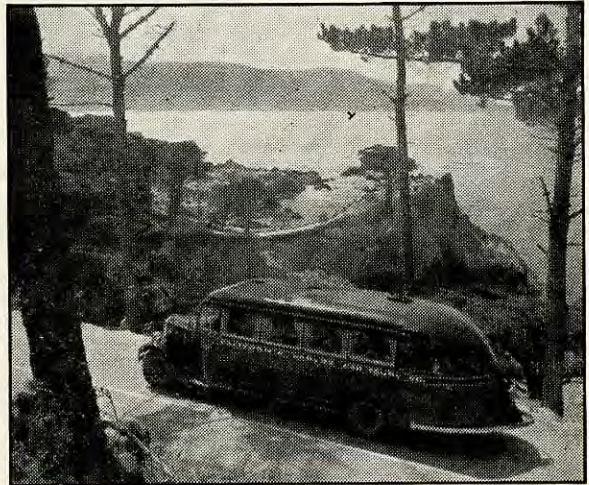
Through Air-Conditioned Pullmans

Southern Pacific offers through air-conditioned Pullmans direct to San Diego from Chicago (on Golden State Limited) and from New Orleans (on Sunset Limited).

Visit the S. P. Exhibit

A talking map of the United States and Mexico is a feature of the Southern Pacific exhibit, the "S. P. Plaza," located in the Transportation Building. You are invited to rest, relax and meet your friends here.

Convenient, economical plan assures hotel accommodations
In connection with any rail ticket to the Exposition you may purchase coupons which assure you of your hotel accommodations in San Diego and also provide for transfers, sightseeing and admission to the Exposition. Costs are surprisingly low—ask any railroad ticket agent for details.



See California the Delightful Way on Your Way to or from the San Diego Exposition

3 AND 4 DAY ALL EXPENSE MOTOR TOURS

Los Angeles to San Francisco either direction

Overnight stops at Hotel Del Monte and Santa Barbara Biltmore Hotel. (Also at Ahwahnee Hotel, Yosemite Valley, on the new 4 day tour.)

Allowance on your railroad tickets
Reservations may be made at any railroad ticket office, or travel bureau.

California Parlor Car Tours Company

West Coast of Mexico Route

SOUTHERN PACIFIC RAILROAD OF MEXICO

Low Fares

Low round-trip fares are in effect to Mexico City; also attractive "side-trip" fares so you can include a visit to Mexico in your trip to or from California. All tickets give you a choice of routes.

Air-Conditioned Cars

Through air-conditioned Pullmans are operated from Los Angeles to Mexico City via Tucson, Nogales and Guadaluajara; also via El Paso and National Rys. of Mexico. The Pullman observation sleeping cars and cafe-lounge cars on S.P. of Mexico Trains 9 and 10 are Air-Conditioned.

"Hotel Car Cruises"

Every Monday an air-conditioned Pullman cafe-lounge, sleeping car leaves El Paso and Tucson for the round-trip to Mexico City and return to El Paso, visiting some of the most interesting places in Mexico en route. See your tour bureau or railroad ticket agent for details.

BOTTLED SPRING WATER

Fresh, pure bottled spring water is provided free in Pullman and dining cars on our West Coast Route trains.

CELAYA AND URUAPAN

* 5 45	Lv Celaya (Nat. Ry.)	Ar	10 25
10 21	Ar Morelia	Lv	5 19
10 31	Lv Morelia	Ar	9 00
11 53	Ar Patzcuaro	Lv	7 45
* 12 00	Lv Patzcuaro	Ar	3 42
2 20	Ar Uruapan	Lv*	1 25

CORRAL, NAVOJOA

(Motor Car Service)			
* 3 35	Lv Corral	Ar	9 20
3 50	Lv Esperanza	Ar	8 50
4 10	Lv Cd. Obregon	Ar	8 30
6 00	Ar Navojoa	Lv	7 00

6 00	Lv Corral	Ar	3 25
3 10	Ar Tonichi	Lv	10 20

MAZATLAN AND ACAPONETA

Daily Ex Sat	Motor Car Service	Daily Ex Sat	
10 00	Lv Mazatlan	Ar	7 25
10 35	Lv Presidio	Ar	6 45
11 39	Lv Rosario	Ar	5 31
12 13	Lv Escuinapa	Ar	4 53
2 10	Ar Acaponeta	Lv	3 05

THROUGH PULLMAN SERVICE

Standard Sleeper: Los Angeles and Mexico City. (Sections, Drawing-Room, Compartment). Leave Los Angeles, Sundays, Tuesdays and Thursdays, arriving Mexico City Thursdays, Saturdays and Mondays; Returning, leave Mexico City, Saturdays, Mondays and Wednesdays, arriving Los Angeles Wednesdays, Fridays and Sundays. **Pullman Observation Sleeper:** Nogales and Guadaluajara (Sections) Trains 9 and 10. **Coaches:** Los Angeles and Guadaluajara. **Pullman Cafe Lounge Cars** handled on trains Nos. 9 and 10, between Nogales and Guadaluajara; all meals enroute, served by The Pullman Company. **Stadard Sleeper Buffet-Car:** Nogales and Guadaluajara (Sections, Drawing-Room) Leave Nogales Tuesdays, Thursdays and Saturdays, arriving Guadaluajara Fridays, Sundays and Tuesdays; Returning leave Guadaluajara, Mondays, Wednesdays and Saturdays, arriving Nogales Wednesdays, Fridays and Mondays. All meals enroute served by The Pullman Company.

READ DOWN				2-378				(A)				READ UP							
76				70				Mls.				No. 9-379-1							
* 8 30				* 7 45				0				8 45							
6 05				7 35				367				11 00							
9 00				10 50				471				* 8 00							
Fr We Mo Tu Th				Fr We Mo Tu Th				Fr We Mo Tu Th				Fr We Mo Tu Th							
Fr	We	Mo	Tu	Th	Fr	We	Mo	8 00	9 00	10 00	11 00	Ar	Fr	We	Mo	8 45	9 45	10 45	11 45
Fr	We	Mo	Tu	Th	Fr	We	Mo	8 55	9 55	10 55	11 55	Ar	Fr	We	Mo	11 00	12 00	1 00	2 00
Fr	We	Mo	Tu	Th	Fr	We	Mo	9 10	10 10	11 10	12 10	Ar	Fr	We	Mo	* 8 00	* 9 00	* 10 00	* 11 00
Fr	We	Mo	Tu	Th	Fr	We	Mo	9 25	10 25	11 25	12 25	Ar	Fr	We	Mo				
Fr	We	Mo	Tu	Th	Fr	We	Mo	9 40	10 40	11 40	12 40	Ar	Fr	We	Mo				
Fr	We	Mo	Tu	Th	Fr	We	Mo	9 55	10 55	11 55	12 55	Ar	Fr	We	Mo				
Fr	We	Mo	Tu	Th	Fr	We	Mo	10 10	11 10	12 10	1 10	Ar	Fr	We	Mo				
Fr	We	Mo	Tu	Th	Fr	We	Mo	10 25	11 25	12 25	1 25	Ar	Fr	We	Mo				
Fr	We	Mo	Tu	Th	Fr	We	Mo	10 40	11 40	12 40	1 40	Ar	Fr	We	Mo				
Fr	We	Mo	Tu	Th	Fr	We	Mo	10 55	11 55	12 55	2 00	Ar	Fr	We	Mo				
Fr	We	Mo	Tu	Th	Fr	We	Mo	11 10	12 10	1 10	2 10	Ar	Fr	We	Mo				
Fr	We	Mo	Tu	Th	Fr	We	Mo	11 25	12 25	1 25	2 25	Ar	Fr	We	Mo				
Fr	We	Mo	Tu	Th	Fr	We	Mo	11 40	12 40	1 40	2 40	Ar	Fr	We	Mo				
Fr	We	Mo	Tu	Th	Fr	We	Mo	11 55	12 55	1 55	2 55	Ar	Fr	We	Mo				
Fr	We	Mo	Tu	Th	Fr	We	Mo	12 10	1 10	2 10	3 10	Ar	Fr	We	Mo				
Fr	We	Mo	Tu	Th	Fr	We	Mo	12 25	1 25	2 25	3 25	Ar	Fr	We	Mo				
Fr	We	Mo	Tu	Th	Fr	We	Mo	12 40	1 40	2 40	3 40	Ar	Fr	We	Mo				
Fr	We	Mo	Tu	Th	Fr	We	Mo	12 55	1 55	2 55	3 55	Ar	Fr	We	Mo				
Fr	We	Mo	Tu	Th	Fr	We	Mo	1 10	2 10	3 10	4 10	Ar	Fr	We	Mo				
Fr	We	Mo	Tu	Th	Fr	We	Mo	1 25	2 25	3 25	4 25	Ar	Fr	We	Mo				
Fr	We	Mo	Tu	Th	Fr	We	Mo	1 40	2 40	3 40	4 40	Ar	Fr	We	Mo				
Fr	We	Mo	Tu	Th	Fr	We	Mo	1 55	2 55	3 55	4 55	Ar	Fr	We	Mo				
Fr	We	Mo	Tu	Th	Fr	We	Mo	2 10	3 10	4 10	5 10	Ar	Fr	We	Mo				
Fr	We	Mo	Tu	Th	Fr	We	Mo	2 25	3 25	4 25	5 25	Ar	Fr	We	Mo				
Fr	We	Mo	Tu	Th	Fr	We	Mo	2 40	3 40	4 40	5 40	Ar	Fr	We	Mo				
Fr	We	Mo	Tu	Th	Fr	We	Mo	2 55	3 55	4 55	6 00	Ar	Fr	We	Mo				
Fr	We	Mo	Tu	Th	Fr	We	Mo	3 10	4 10	5 10	6 10	Ar	Fr	We	Mo				
Fr	We	Mo	Tu	Th	Fr	We	Mo	3 25	4 25	5 25	6 25	Ar	Fr	We	Mo				
Fr	We	Mo	Tu	Th	Fr	We	Mo	3 40	4 40	5 40	6 40	Ar	Fr	We	Mo				
Fr	We	Mo	Tu	Th	Fr	We	Mo	3 55	4 55	5 55	7 00	Ar	Fr	We	Mo				
Fr	We	Mo	Tu	Th	Fr	We	Mo	4 10	5 10	6 10	7 10	Ar	Fr	We	Mo				
Fr	We	Mo	Tu	Th	Fr	We	Mo	4 25	5 25	6 25	7 25	Ar	Fr	We	Mo				
Fr	We	Mo	Tu	Th	Fr	We	Mo	4 40	5 40	6 40	7 40	Ar	Fr	We	Mo				
Fr	We	Mo	Tu	Th	Fr	We	Mo	4 55	5 55	6 55	8 00	Ar	Fr	We	Mo				
Fr	We	Mo	Tu	Th	Fr	We	Mo	5 10	6 10	7 10	8 10	Ar	Fr	We	Mo				
Fr	We	Mo	Tu	Th	Fr	We	Mo	5 25	6 25	7 25	8 25	Ar	Fr	We	Mo				
Fr	We	Mo	Tu	Th	Fr	We	Mo	5 40	6 40	7 40	8 40	Ar	Fr	We	Mo				
Fr	We	Mo	Tu	Th	Fr	We	Mo	5 55	6 55	7 55	9 00	Ar	Fr	We	Mo				
Fr	We	Mo	Tu	Th	Fr	We	Mo	6 10	7 10	8 10	9 10	Ar	Fr	We	Mo				
Fr	We	Mo	Tu	Th	Fr	We	Mo	6 25	7 25	8 25	9 25	Ar	Fr	We	Mo				
Fr	We	Mo	Tu	Th	Fr	We	Mo	6 40	7 40	8 40	10 00	Ar	Fr	We	Mo				
Fr	We	Mo	Tu	Th	Fr	We	Mo	6 55	7 55	8 55	10 05	Ar	Fr	We	Mo				
Fr	We	Mo	Tu	Th	Fr	We	Mo	7 10	8 10	9 10	10 10	Ar	Fr	We	Mo				
Fr	We	Mo	Tu	Th	Fr	We	Mo	7 25	8 25	9 25	10 15	Ar	Fr	We	Mo				
Fr	We	Mo	Tu	Th	Fr	We	Mo	7 40	8 40	9 40	10 20	Ar	Fr	We	Mo				
Fr	We	Mo	Tu	Th	Fr	We	Mo	7 55	8 55	9 55	10 25	Ar	Fr	We	Mo				
Fr	We	Mo	Tu	Th	Fr	We	Mo	8 10	9 10	10 10	10 30	Ar	Fr	We	Mo				
Fr	We	Mo	Tu	Th	Fr	We	Mo	8 25	9 25	10 25	10 35	Ar	Fr	We	Mo				
Fr	We	Mo	Tu	Th	Fr	We	Mo	8 40	9 40	10 40	10 40	Ar	Fr	We	Mo				
Fr	We	Mo	Tu	Th	Fr	We	Mo	8 55	9 55	10 55	10 45	Ar	Fr	We	Mo				
Fr	We	Mo	Tu	Th	Fr	We	Mo	9 10	10 10	11 10	10 50	Ar	Fr	We	Mo				
Fr	We	Mo	Tu	Th	Fr	We	Mo	9 25	10 25	11 25	11 00	Ar	Fr	We	Mo				
Fr	We	Mo	Tu	Th	Fr	We	Mo	9 40	10 40	11 40	11 05	Ar	Fr	We	Mo				
Fr	We	Mo	Tu	Th	Fr	We	Mo	9 55	10 55	11 55	11 15	Ar	Fr	We	Mo				
Fr	We	Mo	Tu	Th	Fr	We	Mo	10 10	11 10	12 10	11 30	Ar	Fr	We	Mo				
Fr	We	Mo	Tu	Th	Fr	We	Mo	10 25	11 25	12 25	11 45	Ar	Fr	We	Mo				
Fr	We	Mo	Tu	Th	Fr	We	Mo	10 40	11 40	1 00	12 00	Ar	Fr	We	Mo				
Fr	We	Mo	Tu	Th	Fr	We	Mo	10 55	11 55	1 05	12 05	Ar	Fr	We	Mo				
Fr	We	Mo	Tu	Th	Fr	We	Mo	11 10	12 10	1 10	12 10	Ar	Fr	We	Mo				
Fr	We	Mo	Tu	Th	Fr	We	Mo	11 25	12 25	1 25	12 15	Ar	Fr	We	Mo				
Fr	We	Mo	Tu	Th	Fr	We	Mo	11 40	12 40	1 40	12 30	Ar	Fr	We	Mo				
Fr	We	Mo	Tu	Th	Fr	We	Mo	11 55	12 55	1 55	12 45	Ar	Fr	We	Mo				
Fr	We	Mo	Tu	Th	Fr	We	Mo	12 10	1 10	2 10	12 55	Ar	Fr	We	Mo				
Fr	We	Mo	Tu	Th	Fr	We	Mo	12 25	1 25	2 25	1 10	Ar	Fr	We	Mo				
Fr	We	Mo	Tu	Th	Fr	We	Mo	12 40	1 40	2 40	1 20	Ar	Fr	We	Mo				
Fr	We	Mo	Tu	Th	Fr	We	Mo	12 55	1 55	2 55	1 30	Ar	Fr	We	Mo				
Fr	We	Mo	Tu	Th	Fr	We	Mo	1 10	2 10	3 10	1 40	Ar	Fr	We	Mo				
Fr	We	Mo	Tu	Th	Fr	We	Mo	1 25	2 25	3 25	1 50	Ar	Fr	We	Mo				
Fr	We	Mo	Tu	Th	Fr	We	Mo	1 40	2 40	3 40	2 00	Ar	Fr	We	Mo				
Fr	We	Mo	Tu	Th	Fr	We	Mo	1 55	2 55	3 55	2 10	Ar	Fr	We	Mo				
Fr	We	Mo	Tu	Th	Fr	We	Mo	2 10	3 10	4 10	2 20	Ar	Fr	We	Mo				
Fr	We	Mo	Tu	Th	Fr	We	Mo	2 25	3 25	4 25	2 30	Ar	Fr	We	Mo				
Fr	We	Mo	Tu	Th	Fr	We	Mo	2 40	3 40	4 40	2 40	Ar	Fr	We	Mo				
Fr	We	Mo</																	