

ESTACADA

The new terminal city of the Oregon Water Power & Railway Company's standard gauge electric road, is 35 miles southeast of Portland, on the Clackamas River, a magnificent mountain stream flowing westerly from the Cascades. One and one-half miles above Estacada the company is developing a 15,000 horse-power electric plant, to cost \$1,000,000. This grand water-power will furnish all the electrical en-



The Estacada Hotel

ergy required to operate the railway system and leave a large surplus for commercial purposes. Estacada is destined to be the seat of large and varied manufacturing industries. A large sash and door factory and a sawmill are already in operation. A company is forming to manufacture terra cotta, fire brick, pressed finishing brick, pottery and other products from the clays existing in large quantities upon the acreage owned by the Town Site Company. This plant will cost \$75,000. Here is a profitable field for a furniture factory; an implement and handle factory; wagon and carriage factory; box and basket factory; shoe factory; harness factory; soap factory; fruit canneries; excelsior factory; pulp and paper mills. Nature has plentifully supplied all

the raw material required for these enterprises, and the markets of the world are at your door—only 35 miles from Portland, the chief seaport of the Pacific Coast.

BARTON

The town of Barton has been platted by the Town Site Company, and lots will be placed upon the market in May. Barton is located on a beautiful plain, with the Clackamas River on the south and Deep Creek on the north, and is surrounded by a fine agricultural country. It is 26 miles from Portland by rail. All the advantages of an inexhaustible water-power exist. Barton is destined to be one of the manufacturing and business centers of Eastern Clackamas County.

OPPORTUNITIES

Oregon is a great field for people with energy and push. The towns of Estacada and Barton afford fine opportunities for enterprising people to locate and reap the profits of the great activities now being developed by the construction of the Oregon Water Power & Railway Company's standard gauge electric system.

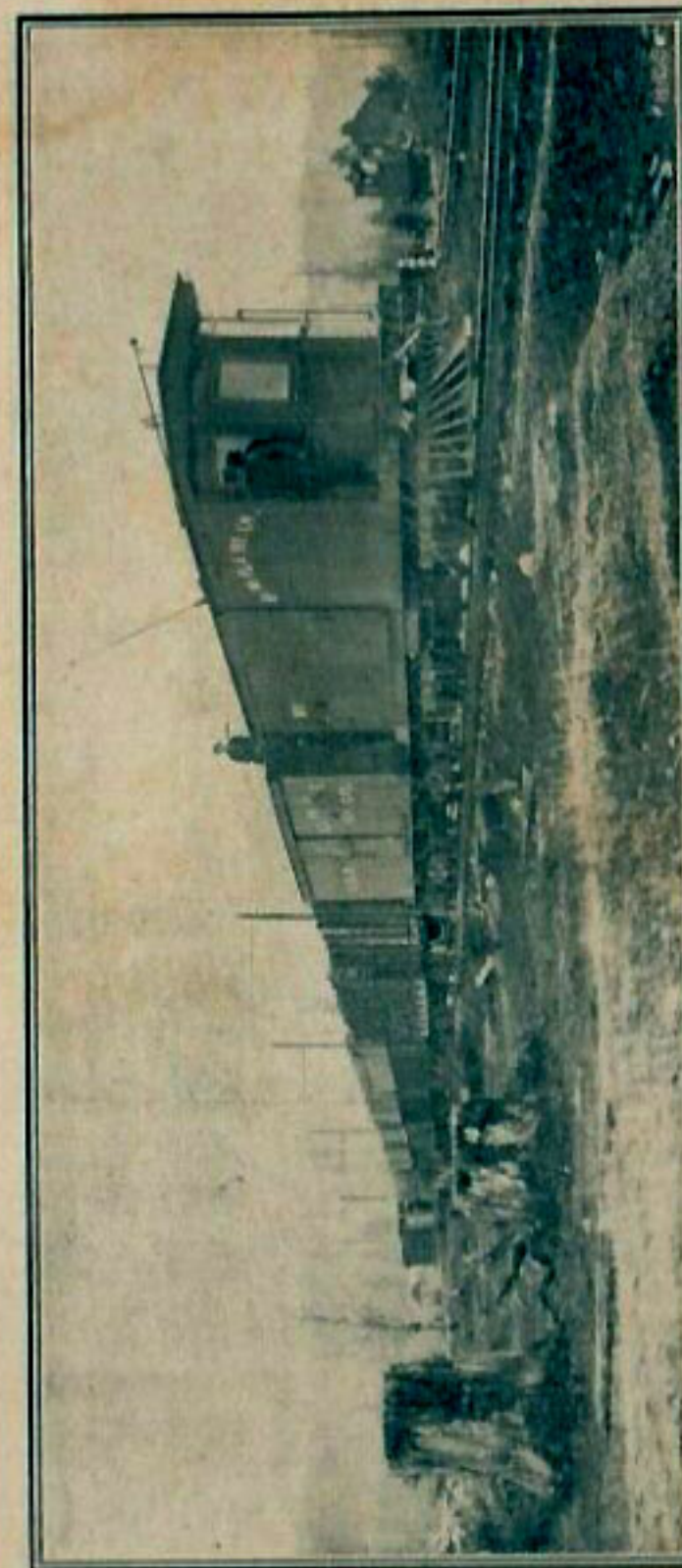
For further information concerning any of
the above, address

Oregon Water Power Town Site Company

Room 5, O. W. P. Ry. Co.'s Building
Telephone Main 216

132½ First Street
Corner Alder

PORTLAND, OR.



Electric Freight Train, O. W. P. & R'y Co.

"Trolley Trips"

O.W.P.

OREGON WATER POWER AND RAILWAY CO.

O.W.P. & R'y Co.

Urban Interurban & Suburban ELECTRIC LINE

CLACKAMAS COUNTY

Clackamas is one of the most prosperous counties of Oregon. In addition to its large area of fertile agricultural lands, it is rich in large bodies of first class commercial timber. In the eastern or mountainous section of the county the precious metals have been discovered, but the same are as yet undeveloped. The economic minerals, such as clay, coal, etc., have been found and are now in process of development.



High Bridge—Estacada

The construction of the Oregon Water Power & Railway Company's electric road from Portland, has brought this heretofore isolated eastern section of the county into direct and cheap connection with Portland, the chief city of the Pacific Northwest. A standard gauge electric railway, with a passenger rate of only two cents per mile and freight rates so reasonable that no farmer can afford to wear out harness, wagons and horses hauling his products to market, is found to be a powerful factor in the development of a country. Eastern Clackamas has all the benefits of this system.

TOPOGRAPHY AND SOIL

The electric railway runs through a fine agricultural country its entire length. After reaching the Clackamas Valley the road skirts the foothills of the Cascade Mountains, the rolling hills extending several miles easterly to the main range. This hilly country is well watered and abundantly timbered, the soil is largely decomposed lava, containing to perfection all of the elements essential to plant life. Here is found some of the best farms in Oregon. The people are prosperous and contented, and have good schools and churches.

LAND VALUES

The value of land is governed by the improvements thereon. Wild land ranges from ten to twenty-five dollars per acre. Improved land ranges from twenty-five to one hundred dollars per acre, owing to cost of improvements and distance from the railway. Most of the cultivated land was originally forest, and the clearing of the same represents much labor and expense. Improved land at one hundred dollars per acre is cheap in this country, as ten acres properly worked is equivalent in productive value to forty or more acres in the Mississippi Valley.

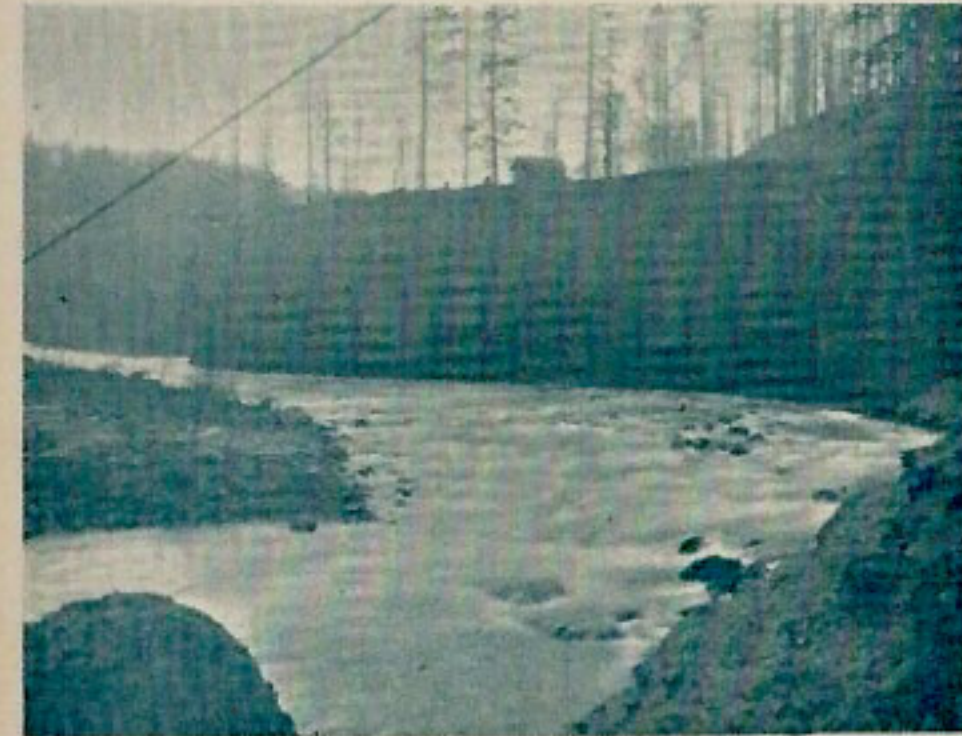
The Willamette Valley is the oldest section of Oregon, and is justly classed as the garden spot of the Pacific Coast. Failure of crops is unknown in this valley. The fertile soil is adapted to the growth of all the cereals, vegetables, fruits and berries. Hops grow to perfection and constitute one of the most valuable products. Clover, timothy, vetches, peas and all root crops grow abundantly.

RAILWAYS

Portland is connected with the East by four trans-continental railways—the Union Pacific, the Northern Pacific, the Southern Pacific and the Great Northern. The Oregon Water Power & Railway Company's local electric system is standard gauge, thus enabling it to interchange traffic with all the trunk lines without breaking bulk.

CLIMATE

Oregon is in the same latitude as South Dakota, Michigan and Northern New York, and the state is divided north and south by the Cascade Range of mountains. The Willamette Valley, including Clackamas County, lies west of the Cascades. Between the valley and the Pacific Ocean a range of low mountains occur, called the Coast Range. The prevailing winds of winter come from the warm South Pacific



Site of the O. W. P. & R'y Co.'s \$1,000,000 Power Plant

Ocean, and in connection with the warm Japan Ocean current which flows along the Oregon Coast, so tempers the atmosphere that Western Oregon has a uniformly mild climate, notwithstanding its latitude. Zero weather seldom occurs, and snow seldom falls in the valley. Summer temperature is moderate, owing to cool winds from the Pacific. Oregon is one of the healthiest states of the Union, and it is free from drouths, cyclones, tornadoes, blizzards, and all the insect pests that destroy crops.

