
This is a reproduction of a library book that was digitized by Google as part of an ongoing effort to preserve the information in books and make it universally accessible.

Google™ books

<https://books.google.com>



SAN DIEGO OFFICIAL TIME TABLES



INTERURBAN
STEAMSHIP
RAILROAD

and **Daily Guide**

1918

SEPT.

1918

**WATCH THE WEEKLY INSERT FOR ADVANCE
DAILY PROGRAM OF PUBLIC EVENTS**

CONTENTS

	Page
Auto Road Maps, Back Country.....	19 & 12-13
Coronado Ferry.....	15
Churches.....	24
Daily Events, Theatres, Etc.....	I, II, III, IV
Fishing Information, Tide Tables, Etc.....	8
La Jolla and Pacific Beach.....	16
National City and Chula Vista.....	17
Pickwick Stages to All So. California Points.....	20-23
Point Loma Ferry (Rt. Rosecrans & N. Isl.)....	10
Point Loma R. R., Ocean Beach.....	14
Rail and Trolley Trips.....	2
San Diego & Arizona R. R.....	18
Steamship Lines.....	10
Santa Fe.....	3
Street Ry. Routes and Numbers.....	7

BUY US WSS

SPECIAL INFORMATION
FOR SOLDIERS AND SAILORS

You find "the luxury of convenience"

— IN —

The CHURCHILL HOTEL

at Ninth and C Streets, San Diego

SPLENDID LOCATION

ABSOLUTELY FIREPROOF

An unusually fine DINING ROOM

Breakfast and Luncheon, 50c

Dinner, \$1.00

The Churchill is a good place to *live*

Tariff From \$1.00

American & European

GEORGE L. MAYNE, Mgr.

Plaza Service

When you transfer and wait for your car buy your drug needs at our stores. We keep a large force of clerks so as to be able to serve you quickly. If you do not need drugs come in and try our fountain drinks. They are the best that money can buy. We pride ourselves on the cleanliness of our fountain as well as the service.

Plaza Prescription Pharmacy

Two Stores on Broadway

Corner Third

Corner Sixth

HOME 4378

MAIN 1504

New China Cafe

❖❖❖❖ CHONG QUON, PROP. ❖❖❖❖❖❖

American and Oriental Dishes

OPEN 10 A. M. TO 12 P. M.

1172 FOURTH ST., S. W. COR. B ST.
SAN DIEGO, CALIF.

HAD YOUR SWIM TODAY?

LOS BANOS

Is Just
The Place

FOOT OF BROADWAY — Opposite Santa Fe Depot



Pure Sea Water; Pool 45x90 ft. Hot and Cold Salt Water Tub Baths. Fresh Water Showers LESSONS

Daily Events

In San Diego and Vicinity

Sept. 21 to Sept. 28, 1918

SATURDAY, SEPTEMBER 21

8:00 p. m.—ISIS: "Flagship Fo'castle Follies" Vaudeville given by men of the Pacific Fleet Flagship.

SILVER STRAND, Coronado—Community Sing and Motion Pictures, Benefit Red Cross Wool Fund.

SANDFORD HOTEL—First Officers' Dinner Dance.

7:30 p. m.—First Presbyterian, Congregational and Central Christian churches and Y. M. C. A., parties for all service men.

Dancing for service men at all clubs and Liberty Auditorium.

SUNDAY, SEPTEMBER 22

11:00 a. m.—Services in all churches. See page 24.

Afternoon—BALBOA PARK: Patriotic film for San Diego boys at the front to be taken. All relatives and sweet-hearts of San Diego men at the front are urged to take part.

The Oldest and Largest

SAVINGS BANK IN SAN DIEGO

Conveniently located at

5th and E Streets

Invites your account

3% compound interest paid on ordinary savings accounts with checking privilege.

4% compound interest paid on Term Savings accounts.

OPEN SATURDAY EVENINGS FOR DEPOSITS
FROM 6:30 UNTIL 8 O'CLOCK

THE SAN DIEGO SAVINGS BANK

NORTHEAST CORNER FIFTH AND E STREETS

Total Resources Over
\$5,000,000.00

DREAM THEATRE

Fifth and F Sts., San Diego

HIGH-CLASS PHOTO PLAYS

Featuring

Wm. S. Hart, Douglas Fairbanks, Mary Pickford,
Clara Kimball Young, Wm. Duncan, Carol
Holloway, Jack Mulhall.

Change of Program every Sunday, Tuesday and
Thursday

Continuous—10 A. M. to 11 P. M.

ANY SEAT 5c

NO WAR TAX

BUY LIBERTY BONDS!

3:00 p. m.—Balboa Park: Exercises in honor of former Texas men in the service here. Former Mayor Charles F. O'neall to speak.

MONDAY, SEPTEMBER 23

See the U. S. Picture, "America's Answer," at the Plaza.

2:00 p. m.—U. S. Grant Hotel: City Federation Parent-Teacher Association open meeting.

TUESDAY, SEPTEMBER 24

8:00 p. m.—School of Psychological Awakeing, Seventh and Broadway. Lecture by Dr. Jaques, "Law, Order and Sequence."



SUNSET
PHOTO STUDIOS
SAN DIEGO, CALIF.

TRIAL OFFER—Your first roll of kodak film, ANY SIZE, developed and finished complete, with one print of each good picture, for 10c. Mail to us, or leave at our studio, 1266 4th st. MENTION THIS AD.

WEDNESDAY, SEPTEMBER 25

8:00 p. m.—LIBERTY HALL, Ninth and G Streets: "An Evening at Rector's," Cabaret by Section Navy Base. Meal service a la Navy.

THURSDAY, SEPTEMBER 26

Don't miss "Out of a Clear Sky" at the Cabrillo.

2:00 p. m.—Casa Loma Hotel—Officers' Family Club. All officers' families invited.

BUY WAR SAVINGS STAMPS

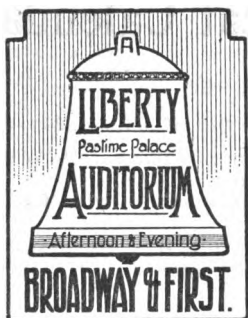


DOVE & ROBINSON

Commercial
and Poster **Printers**

634 THIRD ST., SAN DIEGO





DANCING!

Every Evening 7:30 to 12

Matinees:

Wed. Sat. Sun.
2:30 to 5

FULL ORCHESTRA

10 Class Lessons - - \$1.00
Private Lessons - - - \$1.00

FRIDAY, SEPTEMBER 27

Dream Theatre—Norma Talmadge in "Missing Links."

SATURDAY, SEPTEMBER 28

Beginning of FOURTH LIBERTY LOAN DRIVE.
Buy a bond!

The Daily Program of Events which has been incorporated in the San Diego Official Time Tables is for the convenience and assistance of the public, particularly the transient public. Any announcements should be left at 210 Owl Building (Phone Main 1171), by Wednesday of each week.

The Travelers' Aid Society is always at the service of strangers and will help them in every way possible. A rest room is maintained in the Santa Fe station. Phone Main 6380 or Main 752.

BUY WAR SAVINGS STAMPS



33 1/3%
OFF To
Soldiers &
Sailors

MAIL IN
YOUR
FILMS
AT ONCE

307
C St.
SAN DIEGO

Weekly Theatrical Calendar

* * *

MOTION PICTURES

- CABRILLO**—Marguerite Clark in "Out of a Clear Sky."
DREAM—Sunday and Monday, Marie Walcamp, "A Whirlwind Finish," a racing drama.
Tuesday and Wednesday, "Redemption," with Evelyn Nesbit Thaw.
Thursday, "Faith Endurance," with Roy Stewart.
Friday and Saturday—"Missing Links," with Norma Talmadge.
- PLAZA**—"America's Answer," the second official United States Government war picture.
- PICKWICK**—Wm. Fox presents Theda Bara in "Salome."
- BROADWAY**—Sunday, Dorothy Dalton in "Green Eyes."
Thursday, Shirley Mason in "Come On In."
- SUPERBA**—Sunday, "The Geezer of Berlin," a two-reel comedy; Monroe Salisbury in "The Guilt of Silence."
Thursday, Fritzi Brunette in "Playthings."
- STRAND**—"Johnny Get Your Gun," Virginia Brissac Stock Company.
- SPRECKELS THEATRE**—Hippodrome Vaudeville.
- SAVOY THEATRE**—Pantages Vaudeville.
- SUNSHINE THEATER**—Camp Kearny, Musical Comedy.
- LIBERTY THEATER**—Camp Kearny, Musical Comedy.

We promise only what we can do, and do what we promise

VARIN-HEALEY

"Spot Chasers"

CLEANERS --- DYERS

Economize by Dyeing (Your Old Clothes)

OUR NEW DYEING EQUIPMENT ENABLES US TO HANDLE ALL KINDS OF DYEING ON SHORT NOTICE AND WITH BEST RESULTS OBTAINABLE BY EXPERT WORKMEN.

1141 Sixteenth Street

Main 3846

Home 1228

Auto Call

Auto Delivery

We Give Trading Stamps

The Ideal Lunch Room

1166 FIFTH ST.—Opposite Benbough Furniture Co.

A Cool, Inviting Place to Eat

Fresh Bakery Lunches, Sandwiches and Crisp Salads.
A No. 1 Coffee—Ice Cream and Wafers at All Hours.

All Day and Evening Service

Watch for Saturday Specials

Special Invitation to Service Men

San Diego Official Time Tables and DAILY GUIDE

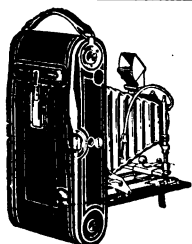
6th Year PUBLISHED MONTHLY BY 6th Year

HALE PUBLICITY COMPANY

210 Owl Drug Building — San Diego, California — Main 1171

VOL. VI SEPT., 1918 No. 9

Guaranteed Circulation 5000. Endorsed by Merchants Ass'n.



Harold E. Lutes

Formerly Slocum's

958 FIFTH STREET
JUST OFF BROADWAY

The largest stock of EASTMAN GOODS carried in San Diego.

DEVELOPING and PRINTING
Done the Eastman Way

PRICES REASONABLE

Public Utilities Are Vital in War

GAS and electric companies perform a service of greatest economic value year in and year out—in war and peace.

The Comptroller of the Currency of the United States in his annual report says:

“The continued and increasing efficiency of these corporations is important for the successful conduct of the war.”

Gas and electric service in industry are speeding up production—saving labor, time and capital investment.

San Diego Consolidated Gas & Electric Co.

By H. H. JONES, Manager.

A large and increasing amount of the securities of this Company are owned by its customers.

RAIL & TROLLEY TRIPS

LA JOLLA

La Jolla (La-Ho-ya) is 16 miles north of the business center of San Diego. Thousands of tourists annually visit this beautiful suburb—some to enjoy a season of rest and pleasure, and some for just a brief view of the many attractions to be found here. No one should leave San Diego without seeing the caves, the bathing coves, Alligator Head, the Witches' Cauldron and the never-to-be-forgotten view of mountains, valleys, plains and sea from the top of Mount Soledad. La Jolla has golf links, club house and reading rooms for the entertainment of visitors, and the exhibition at the Biological Station is well worth a visit.

It has, also, an excellent public library, churches of different denominations, bank, newspaper and good stores of all kinds. There are many cosy cottages and splendid housekeeping apartments, with every modern convenience, to be had at reasonable rates, throughout the season. This is one of the most charming seaside resorts in Southern California. Reached by the La Jolla Railway from Fourth and Broadway.

OCEAN BEACH

On the western slope of Point Loma, near the entrance of Mission Bay, facing the open Pacific, is located a suburb which includes the attractive features of beach resort and place of permanent residence. Here is found a wide expanse of ocean strand, where the swells and breakers invite the surf bather. Fishing and clam digging are among the attractions. Picturesque rocks, caves and coves compose the adjacent coast. Bath-houses, swimming pool, several cafes, perfect boulevards and natural beauty are characteristic of the spot. A short distance south of the beach is an attractive rustic "sea shore" park called Sunset Cliffs.

MISSION BEACH

This newest seaside resort, located just north of Ocean Beach, is ideally situated, facing on both bay and ocean with two and three-quarter miles of shore line on each. It has a well patronized Tent City and bathing beach and is reached by electric car line.

CORONADO TENT CITY

Near Hotel del Coronado is Coronado Tent City, one of the most unique resorts in the world. Life at Tent City is a continual round of pleasure, and the tent houses and palm cottages are the homes of thousands of people during the summer months. Land and water sports of every kind are at hand, and during the season one of the finest bands in the United States gives concerts afternoons and evenings.

HOTEL DEL CORONADO

One of the greatest resort hotels in America, open all the year. Covers nearly five acres. Within a stone's throw of beach, and almost entirely surrounded by semi-tropical foliage and beautiful parked grounds. Is conducted on the American plan. The Coronado Country Club, the scene of International Polo events in Winter, and Golf and Tennis Tournaments during Winter and Summer, is near by. Car No. 9.

Souvenirs & Curios



Suitable for your "Back Home" friends.

Mexican Linen Work, Pottery, Baskets, Blankets, Navajo Silver Jewelry, California Souvenirs of Leather, Wood, Shells, Etc. Native Gem Stones and Abalone Pearl Jewelry.

Burnell's Curiosity Store

Established 30 Years

1045 Sixth St., Between Broadway and C

U. S. RAILROAD ADMINISTRATION

Ticket Office, U. S. Grant Hotel Building, Third and Broadway

SAN DIEGO TO LOS ANGELES

	No. 79 A. M.	No. 71 A. M.	No. 73 P. M.	No. 75 P. M.
Lv. San Diego	2:30	8:40	12:45	3:00
" Linda Vista	3:00	9:08	1:20	3:23
" Sorrento	f3:10	f9:16	f3:38
" Del Mar	f3:20	9:25	1:39
" Cardiff	f3:28	f9:32	f1:45
" Encinitas	f3:32	9:36	f1:49
" Oceanside	4:00	10:03	2:15	4:07
" Capistrano	f5:10	10:57	3:03	f4:50
" Santa Ana	6:00	11:37	3:42	5:27
" Orange	6:09	11:47	3:52	5:34
" Anaheim	6:19	11:58	4:00	5:43
" Fullerton	6:30	12:10
Ar. Los Angeles	7:15	12:50	4:50	6:30
	A. M.	P. M.	P. M.	P. M.

LOS ANGELES TO SAN DIEGO

	No. 72 A. M.	No. 74 P. M.	No. 76 P. M.	No. 78 P. M.
Lv. Los Angeles	9:05	2:05	6:00	11:59
" Fullerton	9:41	2:40	6:35	12:47
" Anaheim	9:50	2:50	6:42	1:03
" Orange	10:00	2:59	6:50	1:15
" Santa Ana	10:10	3:07	7:00	1:25
" Capistrano	10:45	3:40	f2:15
" Oceanside	11:35	4:35	8:20	3:25
" Encinitas	12:07	f5:00	f3:50
" Cardiff	f12:10	f5:03	f3:54
" Del Mar	12:18	5:15	f8:45	f4:05
" Sorrento	f12:28	f5:25	f4:15
" Linda Vista	12:43	5:40	9:02	4:32
" Pacific Beach	f12:56	f5:55
Ar. San Diego	1:10	6:10	9:30	5:00
	P. M.	P. M.	P. M.	A. M.

DOUGLAS FAIRBANKS

WM. S. HART

NORMA TALMADGE

MARY PICKFORD

CLARA KIMBALL YOUNG

THEDA BARA

D. W. GRIFFITH PRODUCTIONS

FATTY ARBUCKLE AND

MACK SENNETT COMEDIES

□□□□□□ AT THE □□□□□□

CABRILLO THEATER

"The 18-Karat House"

Fireproof — Elegant — Comfortable.

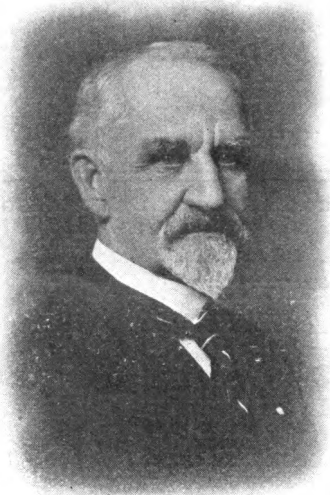
**The Greatest Degree of Ventilating
Perfection Attained in California.**

ASK ANYBODY

Geo. Puterbaugh

For CITY JUSTICE

(Police Judge)



JUDGE GEO. PUTERBAUGH, who has announced his candidacy for re-election to the office of City Justice, is so well known to San Diegans that the mere announcement will probably be sufficient as a rallying war cry to his host of friends. His long residence in San Diego, his useful career in this community, and the general love and esteem in which he has always been held, speak the certainty of his re-election.

In no other office does the necessity for a great human heart so certainly exist, and in this respect, in addition to his well-known ability and probity, does Judge Puterbaugh fully qualify. Many a human wreck owes to him the impulse and opportunity for reformation and rehabilitation. His love of his fellow-man manifests itself in his daily work. San Diego can illy afford to do without him in his present occupation.

MISSION CLIFF GARDENS

One of the most beautiful gardens and view spots in California. Overlooks Mission Valley and San Diego Mission (the oldest in the state). There is a large aviary, housing over 300 song-birds; deer paddock and pavillon. Admission free. Take Car 1, north, on Fifth street. This car passes Exposition grounds.

★ Special Information ★

For Our Service Men

This section conducted under the auspices of
the RECREATION COMMITTEE FOR
ARMY AND NAVY.

SERVICE CLUBS

Service Men's Club—Elevator entrance, C street, near Fifth.

Soldiers and Sailors' Club—615 Broadway, second floor.

U. S. Service League Canteen and Amusement Rooms—
1318-20 Fifth street.

Army and Navy Service Club—Basement New Southern
Hotel, Sixth street, near B. Maintained by Rotary Club.

Enlisted Men's Club—Central Christian Church.

La Jolla Service Club—Chase block on Wall street.

Enlisted Men's Club—Bank of Coronado building, Orange
avenue, Coronado.

Masonic Service Club—Fifth and A streets.

Christian Science Club for Enlisted Men—Spreckels Bldg.

Jewish Welfare Club—Seventh and Broadway, second floor,
entrance on Seventh.

Salvation Army Hostel—For soldiers and sailors. Northwest
corner Sixth and Broadway. Open day and night.

Salvation Army Reading, Writing and Rest Room—For
soldiers and sailors. Open every afternoon.

* * *

All these clubs, with the exception of the last five, are conducted under the auspices of the War and Navy Department Committee on Training Camp Activities. Men in all branches of the service may check coats, hats or packages and receive all the privileges and attentions of regular clubs.

At the Service Men's Club, luncheon and supper (home cooking), are served on Liberty days for 35c each. At the Soldiers and Sailors' Club, counter service with sandwiches, pie, cake, coffee, soft drinks, etc., is maintained every day.

OFFICE BUILDINGS

American National Bank Building.....	Fifth and Bdwy.
Bank of Commerce Building.....	841 Fifth
Bullders' Exchange Building.....	820 Fifth
Central Mortgage Building...N. E. Cor. 1st and Broadway	
City Hall.....	S. W. Cor. Fifth and G
Cosgrove Building.....	960 Fourth
Court House.....	Bdwy. between Front and Union
Elks' Building.....	N. W. Cor. Second and Bdwy.
Fox-Heller Building.....	S. E. Cor. Fifth and E
Granger Building.....	Fifth and Broadway
Grant Building.....	1036 Fifth
Grant Hotel.....	Broadway between Third and Fourth
Lawyers' Block.....	919 Fourth
McNeece Building.....	N. W. Cor. Fifth and F
New Masonic Temple.....	Fifth and Ash
Owl Drug Building.....	Fourth and Bdwy.
Plaza Building.....	920 Fourth
Post-Bailey Building.....	N. E. Cor. 7th and Broadway
Savoy Theatre Building.....	N. W. Cor. Third and C
Scripps Building.....	Sixth and C
Sefton Building.....	C St. between Fourth and Fifth
Spreckels Theatre Building....	Bdwy. between 1st and 2nd
Timken Building.....	Sixth and E
Union Building.....	Bdwy. between Second and Third
U. S. Postoffice.....	F and Union Streets
Watts Building.....	Fifth and E

Camp Kearny

UNITED STATES RAILROAD ADMINISTRATION

SAN DIEGO-CAMP KEARNY TRAINS

Leave San Diego	Leave Linda Vista	Arrive Camp Kearny
7:00 a. m.	7:31 a. m.	7:40 a. m.
.....	12:45 p. m.	12:55 p. m.
k2:00 p. m.	k2:30 p. m.	k2:40 p. m.
b2:20 p. m.	b2:50 p. m.	b3:00 p. m.
3:00 p. m.	x3:25 p. m.	x3:35 p. m.
o4:25 p. m.	o4:55 p. m.	o5:05 p. m.
.....	5:42 p. m.	5:50 p. m.
†9:00 p. m.	†9:30 p. m.	†9:40 p. m.
o11:00 p. m.	o11:30 p. m.	o11:40 p. m.

Leave Camp Kearny	Arrive Linda Vista	Arrive San Diego
8:55 a. m.	9:05 a. m.
12:30 p. m.	12:40 p. m.	1:10 p. m.
k12:45 p. m.	k12:54 p. m.	k1:30 p. m.
b1:05 p. m.	b1:15 p. m.	b1:49 p. m.
3:00 p. m.	3:10 p. m.	b3:45 p. m.
: 3:45 p. m.	: 3:55 p. m.	: 4:25 p. m.
*4:20 p. m.	*4:30 p. m.	*5:00 p. m.
b5:15 p. m.	b5:24 p. m.	b5:55 p. m.
5:30 p. m.	5:39 p. m.	6:10 p. m.
†9:50 p. m.	†9:59 p. m.	†10:30 p. m.

k Saturday only. : Wednesday only.
 † Sunday only. b Saturday and Sunday only.
 * Monday, Tuesday, Wed'day, Thursday, Friday only.
 o Wednesday, Saturday and Sunday only.
 x Monday, Tuesday, Thursday and Friday only.

BANKS

First National.....N. E. Corner Firth and Broadway
 Citizens' Savings Bank.....Timken Building, Sixth and E
 Merchants' National Bank....S. W. Cor. Fifth and Broadway
 San Diego Savings Bank—N. E. Corner Fifth and E streets
 Security Commercial & Savings Bank....Fifth and F streets
 Southern Trust & Commerce Bank....S. W. Cor. Fifth and E
 Union National Bank.....Sixth and Broadway
 United States National Bank.....Second and Broadway
 University Avenue Bank.....548 University

RED CROSS

Executive Offices, Civillian Relief and Information Bureau
 —809 Sixth St., Maryland Hotel; Leroy A. Wright, Chair-
 man. Phone Main 1992.



Manufacturers of **Army & Navy Leather Goods**

Special Instrument Cases, Field Map
 Cases, Dispatch Bags, Field Glass Cases,
 Portfolios, Photo Cases, Money Belts, Leg
 Purses, Hat Straps, Chin Straps, Wrist
 Watch Cases : : : : : :

Repairing and Altering
 Puttees and Officers' Boots

BURNELL'S

Established 30 Years

1045 Sixth St., Near C

STREET RAILWAYS

ROUTE NO. 1. (5th Street and Mission Cliff Line.) **NORTHBOUND**—From Union Depot on Broadway and 5th St., via Laurel St. Entrance to Balboa Park, University Ave. and Park Boulevard to Normal School, Mission Cliff Gardens and Ostrich Farm. **SOUTHBOUND**—From Mission Cliff Gardens, on Park Boulevard, University Ave., 5th St., and Broadway to Union Depot.

ROUTE No. 2. (Broadway and Brooklyn Heights Line.) **EASTBOUND**—From Union Depot, on Broadway to Golden Hill, Brooklyn Heights, via 30th St., to University Ave. **WESTBOUND**—From University Ave., on 30th St. via Broadway, to Union Depot.

ROUTE NO. 3. (Fifth Street and Mission Hills Line.) **NORTHBOUND**—From Union Depot, on Broadway and 5th St. to Hillcrest and Mission Hills, via Ft. Stockton Drive to Trias St. **SOUTHBOUND**—From Trias St. via 5th St. and Broadway to Union Depot.

ROUTE NO. 4. (Imperial Avenue Line.) **EASTBOUND**—From First and Broadway on Broadway, Fifth, Imperial Ave. to Cemeteries and Sierra Vistas. **WESTBOUND**—From 40th St. via Imperial Ave., Fifth St. and Broadway to First and Broadway.

ROUTE NO. 5. (K Street and Old Town Line.) **WESTBOUND**—From 30th St., on Woolman, via K St., 5th, Broadway, State and India to Ramona's Marriage Place, Old Town. **SOUTHBOUND**—From Ramona's Marriage Place, on India and State, via Broadway, Fifth, K St., 25th and Woolman to 30th St.

ROUTE NO. 6. (First and Market Street Line.) **WESTBOUND**—From 25th St., on Market, via Third B and First to Laurel St. **SOUTHBOUND**—From Laurel on First St., via B, Third and Market to 25th St.

ROUTE NO. 7. (East San Diego Line via Park.) **NORTHBOUND**—From F St., on Third and B via High School, Spreckels Outdoor Organ, through Balboa Park to University Ave. and East San Diego. **SOUTHBOUND**—From Euclid Ave., East San Diego, on University Ave. via Balboa Park, 12th St. and F to Third.

ROUTE NO. 8. (F Street Line.) **EASTBOUND**—From Union Depot on Broadway, via State and F St. to 25th. **WESTBOUND**—From 25th St., on F, via Federal Building and Arctic St. to Union Depot.

ROUTE NO. 9. (Coronado Ferry Line.) **EAST** on Broadway, via 5th St. and Market to Santa Fe Wharf and Coronado Ferry. Returning from Ferry on Arctic St. to Union Depot.

ROUTE NO. 10. (Coronado Ferry Line.) (Operates from 4:10 p. m. to 6:10 p. m., only.) **WEST** on Broadway via Union Depot, Municipal Pier, on Arctic St. to Santa Fe Wharf and Coronado Ferry. Returning from Ferry via Market and 5th St.

ROUTE NO. 11. (Adams Avenue Line via Park.) **EASTBOUND**—From Third, on F and 12th, via High School, Spreckels Outdoor Organ, through Balboa Park to Adams Avenue, Normal Heights and Kensington Park. **WESTBOUND**—From Kensington Park, on Adams Ave., through Balboa Park via B St. and Third to F.

ROUTE NO. 12. (Logan Heights Line.) **EASTBOUND**—From Union Depot on Broadway, via Fifth, Market and 16th St. to Logan Heights. **WESTBOUND**—From 31st St. on National Ave. and Logan Ave., via 16th, Market, Fifth and Broadway to Union Depot.

ROUTE NO. 13. (Third Street Line.) **NORTHBOUND**—From Broadway on Third and Fourth, Spruce and First St. to Washington. **SOUTHBOUND**—From Washington on First, Spruce, Fourth and Third to Broadway.

ROUTE O.B. (Ocean Beach Line.) **WESTBOUND**—From Fourth and Broadway, via Loop, F and Third St.; West on Broadway, North on State and India via Loma Portal to Ocean Beach. **Note**—Transfer at Roseville Junction for La Playa.

ROUTE N.C. (National City and Chula Vista Line.) **SOUTHBOUND**—From Union Depot on Broadway via Third, Market, Fifth, K St. and Newton Ave. to National City and Chula Vista.

NATIONAL CITY-CHULA VISTA

One of the many pleasant trips to be taken to suburban towns is by electric car from Third and Broadway to National City and Chula Vista. Both are attractive, growing communities of great promise, and close to the best citrus fruit region of the country. National City is four miles from San Diego; Chula Vista seven miles and near the bay.



---fishin'

TIDE TABLE --- SEPTEMBER

(Based on Old Time)

SEPTEMBER

Date	Forenoon				Afternoon			
	High Time	High Ft.	Low Time	Low Ft.	High Time	High Ft.	Low Time	Low Ft.
Sun. 1.....	7:24	4.5	1:00	0.1	6:44	6.0	0:50	2.2
Mon. 2.....	7:53	4.8	1:45	0.0	7:26	6.0	1:30	1.8
Tues. 3.....	8:19	5.0	2:22	0.1	8:04	6.0	2:08	1.6
Wed. 4.....	8:44	5.1	2:44	0.3	8:38	5.8	2:41	1.3
Thurs. 5.....	9:07	5.3	3:07	0.5	9:11	5.6	3:12	1.2
Fri. 6.....	9:32	5.4	3:30	0.8	9:42	5.3	3:43	1.1
Sat. 7.....	9:56	5.4	3:51	1.2	10:14	4.8	4:16	1.1
Sun. 8.....	10:19	5.4	4:10	1.5	10:48	4.4	4:49	1.2
Mon. 9.....	10:42	5.3	4:26	1.8	11:27	3.9	5:27	1.3
Tues. 10.....	11:08	5.2	4:43	2.1	6:17	1.5
Wed. 11.....	0:19	3.4	5:00	2.5	11:42	5.0	7:31	1.7
Thurs. 12.....	1:51	3.0	5:16	2.8	0:35	4.8	9:23	1.6
Fri. 13.....	4:21	3.1	7:08	3.0	2:13	4.7	10:54	1.3
Sat. 14.....	5:48	3.5	9:07	3.4	3:52	4.9	11:46	0.8
Sun. 15.....	6:16	3.8	11:12	3.0	5:03	5.3
Mon. 16.....	6:44	4.3	0:25	0.4	6:00	5.7	0:07	2.5
Tues. 17.....	7:12	4.8	1:00	0.1	6:50	6.0	0:52	1.8
Wed. 18.....	7:42	5.3	1:34	0.0	7:35	6.2	1:36	1.1
Thurs. 19.....	8:13	5.8	2:08	0.0	8:24	6.2	2:19	0.5
Fri. 20.....	8:42	6.2	2:41	0.1	9:09	5.9	3:04	0.0
Sat. 21.....	9:22	6.5	3:15	0.5	9:58	5.5	3:52	-0.2
Sun. 22.....	10:00	6.6	3:50	0.9	10:51	4.9	4:42	-0.2
Mon. 23.....	10:40	6.5	4:25	1.4	1:50	4.2	5:40	0.0
Tues. 24.....	11:27	6.2	5:05	2.0	6:45	0.2
Wed. 25.....	1:01	3.8	5:51	2.5	0:24	5.8	8:07	0.6
Thurs. 26.....	2:37	3.5	7:08	3.0	1:38	5.4	9:39	0.7
Fri. 27.....	4:28	3.7	9:16	3.1	3:09	5.1	10:56	0.6
Sat. 28.....	5:38	4.1	10:57	2.8	4:33	5.1	11:53	0.5
Sun. 29.....	6:19	4.5	12:00	2.3	5:37	5.2
Mon. 30.....	6:50	4.8	0:41	0.4	6:38	5.3	0:47	1.8

†Cross means in the forenoon.

Fishing in Vicinity of San Diego

By Stanley P. Andrews

Manager of the Hazard-Gould Sport Goods Company

NO PLACE in the Southwest, and possibly in the U. S. A., can you find a greater variety of fishing than can be found in the vicinity of San Diego. There are three classes of salt-water fishing to be had here, as follows:

DEEP-SEA TROLLING for the gamey Yellowtail, Albicore, White Sea Bass, Spanish Mackerel, Barracuda and others, too numerous to mention, that inhabit the waters in the vicinity of the kelp beds.

SURF FISHING is undoubtedly the most favored of all our fishing, and thousands line the beaches during the summer months to try their luck. The Corvina and Spot-fin Croaker are the most prized fish caught in the surf, and are considered our best table fish. Season for surf fishing is best from April 1 to September 1.

San Diego and Mission Bays furnish good fishing all year, and at various seasons great sport can be had with the Jack Smelt, Mackerel, Sea Trout, Halibut, Sculpin, Bass and Flounders.

FRESH-WATER FISHING—San Diego County has several lakes that have been stocked with Black Bass of the large-mouth variety; the most important of these lakes are Sweetwater, La Mesa, Upper Otay and Moreno. The principal streams of the county have been stocked with Rainbow and Brook Trout. Cuyamaca lake has also been stocked with trout, which should furnish good fishing this season.

Very good catches were reported last year in several of the streams, and from all indications fishing should be better this year than last.

For further information, the Hazard-Gould Sports Goods Co., 145 Broadway, has published for free distribution, a small but complete pamphlet on fishing, including Tide Tables, bait and tackle to use, places to go and how to get there, also sunrise and sunset table.

The Hazard-Gould Sport Goods Co., are the local agents for A. G. Spalding & Bros. They carry a full line of sporting goods.

season's here!

PHONE
HOME 2151

For All
Kinds of
Fish Bait
and
Tackle



—SEE

S. E. HOFFMAN—Foot of F St.

THE SAN DIEGO MUSEUM

A rich inheritance from the Exposition beautiful, the San Diego museum, is one of the chief educational influences of the city and a worthy source of pride. It occupies the California Quadrangle in Balboa park—the group of fireproof buildings which were designed to remain as a permanent architectural achievement. The museum is now the largest west of Chicago; the buildings are valued at \$500,000, the collections at \$250,000.

The Fine Arts Building is devoted to exhibitions of various forms of art, especially that expressive of California and the Southwest.

The California Building contains a wonderful collection of relics representing the life of the earliest Americans. There are great statues from Guatamala, memorial tablets from Central America temples, burial pottery from Mexico and sacred books of the ancient Aztecs and Mayas.

The Indian Arts Building contains valuable collections of the Indians of the Southwest; also groups of figures which illustrate the early beginning of native American culture. There is one of the largest collections of ancient pueblo and cliff dwellers' pottery in existence.

The Science of Man Building is occupied by the famous collections gathered by expeditions to all parts of the world and assembled with the assistance of the Smithsonian Institution. It is a great anthropological study in five sections—the evolution of man, his variations in racial groups, present development; pathology, the anthropological laboratory. This exhibit was prepared and installed by the United States national museum and is considered the most important of its kind in the world.

The Government Building contains the Joseph Jessop Archery collection, the finest archery collection in existence. Other important collections are being assembled here.

GROSSMONT

Gross mont (elevation 1200 feet above sea level) fourteen miles east of San Diego, on the San Diego & Arizona Railway, is the home of Madame Schumann-Heink, the famous contralto; Carrie Jacobs Bond, Owen Wister and other celebrities. From the summit of Grossmont a remarkable view is presented of mountains of California and Mexico, as well as the city, Point Loma, ocean and bay.

POINT LOMA FERRY

R. J. CHANDLER AND OAKLEY HALL, Mgrs.

LEAVES STAR AND CRESCENT WHARF

Foot of Broadway

Take No. 2 Car

Telephones, Home 2597; Pacific Main 1100
Subject to Change Without Notice

NORTH ISLAND TIME TABLE

Daily Except Sundays				Sunday Only			
Lv. San Diego		Lv. N. Island		Lv. San Diego		Lv. N. Island	
A. M.	P. M.	A. M.	P. M.	A. M.	P. M.	A. M.	P. M.
*6:15	3:00	*6:30	4:4b	*7:00	*1:00	*7:15	4:15
*7:00	4:00	*7:15	5:15	*7:40	2:00	*7:55	*5:15
*7:40	4:30	*7:55	*5:50	9:00	3:00	9:15	*6:20
9:00	5:00	9:15	*6:20	*10:00	4:00	*10:15	*7:00
10:00	*5:30	10:15	*7:00	11:00	*5:00	11:15	8:00
11:00	*6:05	11:15	8:00	12:00	*6:00	P. M.	10:00
†*12:00	*6:45	P. M.	10:00	*6:45	12:15	11:00
P. M.	7:45	12:45	11:00	7:45	*1:15	11:30
.....	9:45	1:15	11:30	9:45	2:15	12:00
1:00	10:45	2:15	12:00	10:45	3:30
.....	11:15	3:30	11:15
2:00	11:45	4:15	11:45

*Men in uniform and civilian employes carried free on these trips. All other trips 5c each way.

Saturday only—3:00 and 3:30 p. m. trips free to service men and employes; 5:00 and 5:20 p. m. pay boats.

†Foot of Market St., Santa Fe Float.

FORT ROSECRANS TIME TABLE

Boats Leave San Diego for Fort Rosecrans	Boats Leave Fort Rosecrans for San Diego
5:45 a.m. Daily except Sunday	6:20 a.m. Daily except Sunday
7:00 a.m. Daily except Sunday	7:45 a.m. Daily except Sunday
7:30 a.m. Sunday only	8:10 a.m. Sunday only
12:10 p.m. Wed., Sat., & Sun.	12:50 p.m. Wed., Sat., Sunday
4:00 p.m. Daily	4:40 p.m. Daily
5:15 p.m. Tues., Wed., Thurs., Sat. & Sun	5:50p.m. Tues., Wed., Thurs., Sat. & Sun.
6:30 p.m. Monday and Friday	p.m. Mon. & Fri. (When singing class is over)
10:15 p.m. Tues., Wed., Thurs., Sat. & Sun.	10:45 p.m. Tues., Wed., Thurs., Sat. & Sun.
12:00 Every night.	12:30 a.m. Every morning.

2:30 P. M.—SUNDAY—3:15 P. M.

RAMONA'S MARRIAGE PLACE

Old Town, on No. 5 car line, was the beginning of California; location of first white settlement. First Mission established here in 1769. Monument marks spot where General Fremont planted United States flag in 1846. Other sights are old graveyard, first jail, first palm tree, 140 years old, Indian couple, 120 years old, Ramona's Marriage Place, built in 1825, and since partially restored, located here.

PACIFIC S. S. CO. SAILINGS

Queen and Dewey leave San Diego Monday, 10 p. m. Arrive San Diego, Monday, 5:30 p. m. President leaves San Diego alternate Wednesdays, 10 p. m. Arrives San Diego alternate Wednesdays, 5 p. m. Phone Main 7; Home 4441. Ticket Office, Second and Broadway, southeast corner.



McCormick S. S. Line

San Pedro	\$3.00	Grays Har.	\$35.50
Frisco	\$14.50	Portland	\$34.50
Tacoma and Seattle		\$36.50	

These are first-class rates, berth and meals included.

Office and Wharf—Foot 24th St.

Tel. Main 4991



The Gainsborough
Studio.

1047 FIFTH ST. - SAN DIEGO
PHONE MAIN 6119



☪ *Special Service to Army People*



SAN DIEGO

"The Birthplace of California"

PERHAPS no better evidence can be offered of San Diego's many and unusual advantages of location, climate, bay, harbor and general surroundings than is shown in the preferences extended by the Federal Government.

Briefly stated, they are as follows:

Camp Kearny, U. S. National Guard Encampment; Headquarters 21st Infantry, U. S. Army; U. S. Naval Training Station; U. S. Marine Corps Base; U. S. Army Aviation School, two fields; U. S. Navy Aviation School; U. S. Naval Coaling Station; U. S. Naval Fuel Oil Station; U. S. Quarantine Station; U. S. Submarine Operating Base; Fort Rosecrans, Coast Artillery; U. S. Naval High Power Radio Station; U. S. Naval Radio Station; Training Port for Vessels of Pacific Fleet; Concrete Ship Building Plant.

San Diego is the greatest military rendezvous ever created west of Chicago, all branches of the Army and Navy being represented.

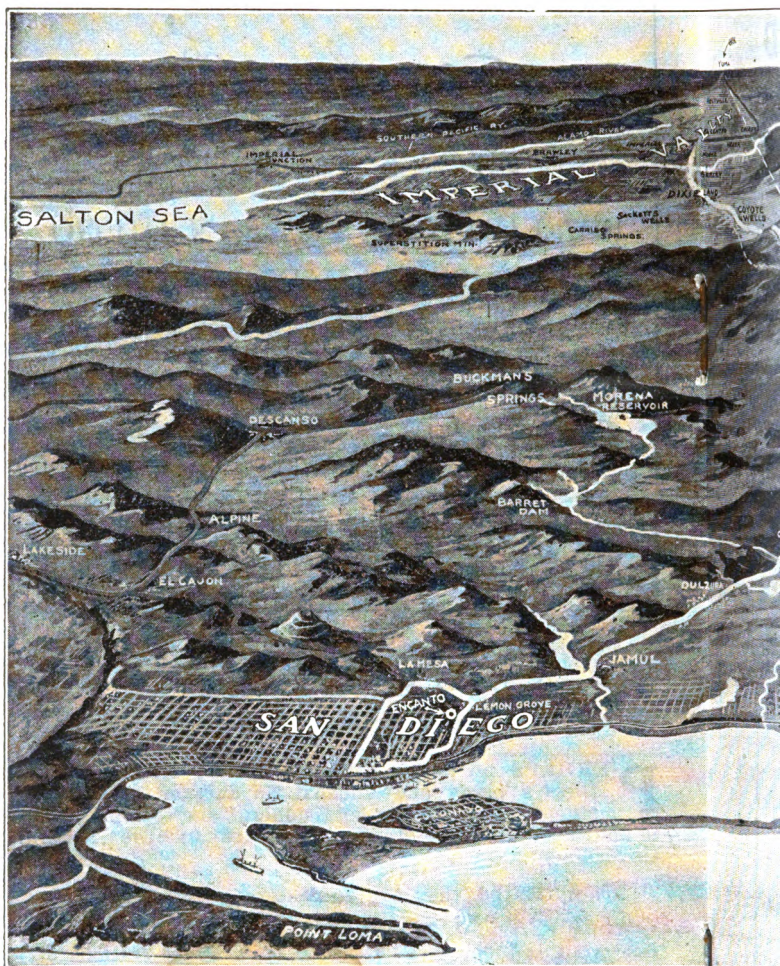
THE SAN DIEGO
CHAMBER OF COMMERCE

Extends an invitation to come and see for yourself, placing its Information Bureau at your service.

CHAMBER OF COMMERCE
BROADWAY AT SECOND

Southern Trust AND COMMERCE BANK

Offers a



To the Beaches

CAR 9
For **Coronado Tent City**
Bathing, Boating, Dancing

For **Ocean and Mission Beaches**
Take OB CAR

San Diego Electric Ry. Co.
Ticket Office 213 Broadway

1st AND
COMMERCIAL BANK, The Offers a complete Banking Service.
 Commercial, Savings, Trust and Bond Departments.
 Banking Home of over 19,000 Depositors.



Delightful **BAY TRIPS**

You cannot enjoy San Diego to the utmost without taking one of the Star & Crescent Boat Company's marine excursions. Besides the following the Company makes a specialty of chartered parties:

BAY TRIP DE LUXE—Daily at 10:15 a. m. and 2:30 p. m. to see interesting and historic points. Personally conducted. Round trip, 60c.

AVIATION FIELD—This trip temporarily discontinued. Fine view of aeroplanes at close range can be had from Bay Trip de Luxe.

All excursions leave from foot of Broadway. For further particulars phone Main 1100 or Home 2597.

Point Loma and Ocean Beach

POINT LOMA RAILROAD TO POINT LOMA, OCEAN BEACH, SUNSET CLIFFS, ETC.

CITY TICKET OFFICE, UNION BLDG., 213 BDWY.

Leave Fourth and Broadway—5:20 a. m., 5:40, 6:00, 6:20, 6:40, 7:00 via Loop, 7:20, 7:40, 8:00, 8:20 via Loop, 9:00, 9:40 via Loop, 10:20, 11:00 via Loop, 11:40 via Loop, 12:20 p. m., 1:00 via Loop, 1:40, 2:20 via Loop, 2:40, 3:00, 3:20, 3:40 via Loop, 4:00, 4:20, 4:40, 5:00 via Loop, 5:20, 5:40 via Loop, 6:00, 6:20, 7:00, 7:40, 8:20, 9:00, 9:40 via Loop, 10:20, 11:00, 11:40.

Leave Ocean Beach—6:00 a. m., 6:20, 6:40, 7:00, 7:20, 7:40, 8:00, 8:20, 8:40, 9:00, 9:40, 10:20, 11:00, 11:40, 12:20 p. m., 1:00, 1:40, 2:20, 3:00, 3:20, 3:40, 4:00, 4:20, 4:40, 5:00, 5:20, 5:40, 6:00, 6:20, 6:40, 7:00, 7:40, 8:20, 9:00, 9:40, 10:20, 11:00, 11:40, 12:20.

SUNDAY SCHEDULE

Leave Fourth and Broadway—6:20 a. m., 7:00 via Loop, 7:40 8:20 via Loop, 8:40, 9:00, 9:20, 9:40 via Loop, 10:00, 10:20, 10:40, 11:00 via Loop, 11:20, 11:40 via Loop, 12:00, 12:20 p. m., 12:40, 1:00 via Loop, 1:20, 1:40, 2:00, 2:20 via Loop, 2:40, 3:00, 3:20, 3:40 via Loop, 4:00, 4:20, 4:40, 5:00 via Loop, 5:20, 5:40 via Loop, 6:00, 6:20, 6:40, 7:00, 7:40, 8:20, 9:00, 9:40 via Loop, 10:20, 11:00, 11:40.

Leave Ocean Beach—7:00 a. m., 7:40, 8:20, 9:00, 9:20, 9:40, 10:00, 10:20, 10:40, 11:00, 11:20, 11:40, 12:00, 12:20 p. m., 12:40, 1:00, 1:20, 1:40, 2:00, 2:20, 2:40, 3:00, 3:20, 3:40, 4:00, 4:20, 4:40, 5:00, 5:20, 5:40, 6:00, 6:20, 6:40, 7:00, 7:20, 7:40, 8:20, 9:00, 9:40, 10:20, 11:00, 11:40, 12:20.

A leading business man writes: "To stop advertising to save money is like stopping a clock to save time."

The dishes you are most fond of you are almost sure to find in appetizing array—cooked and seasoned just as you like them.

MORGAN'S CAFETERIA

1047-49 Sixth St.

Our cooks are true masters of the culinary art, and they have the best of materials to work with, for there is no skimping of quality at Morgan's. Even the coffee is a fragrant forty-cent blend.

JUBILEE INCUBATORS

MAIN 793

Feed and
Grain of
all Kinds



Home 4262

American
Brooder
Stoves

645 G, Corner 7th

Formerly The San Diego Poultry Supply Company

(14)

Coronado

San Diego & Coronado Ferry Co.

Ferry boats leave San Diego from 6:40 a. m. until midnight—on the hour and 20 and 40 minutes after the hour.

Leave Fifth and Broadway at 10, 30 and 50 minutes after the hour—6:30 a. m. until 11:50 p. m.

Leave Hotel del Coronado on the hour and 20 and 40 minutes after the hour from 6:20 a. m. until 11:40 p. m.

Ferry boats leave Coronado side, 20, 30 and 50 minutes after the hour.

On Sunday afternoons and Holidays and special occasions ten-minutes service is maintained for as long a time as is required.

CAR SERVICE CORONADO

Take Car No. 9 on Broadway, Fifth or Market.

No. 10 operates north on Fifth, west on Broadway, etc., from 4:10 to 6:10 p. m., only.

Round trip tickets, 15c; on sale at Ticket Office, 213 Broadway, Union Building.

PLACES TO KODAK

EXPOSITION GROUNDS AND BALBOA PARK.

The Zoo. Elk Park. Uncle Sam's Boys. Fine Architecture. Beautiful Gardens. Bay Scenery, Etc.

THE OLD MISSION.

Ruins of California's Oldest Mission. Old Palms, Etc.

CORONADO.

The Beach. Bathing Scenes. Japanese Gardens. Coronado Hotel. Ocean Drive. Silver Strand, Etc.

THE WATERFRONT.

Shipping Scenes. Yachts, Fishermen and other interesting scenes.

OLD TOWN.

Ramona's Marriage Place. Sierra Cross. Oldest Palm. First Brick House in California. First Jail. Old Graveyard, Etc.

OCEAN BEACH.

Sunset Cliffs. The Bathers. Mission Beach. Marine Views.

BACK COUNTRY.

Grossmont and other mountain trips. Camping (all the year) at Ellis Ranch, Descanso and many other places.

→ Did You Ever Visit

POWAM LODGE?

CHOICEST MOUNTAIN RESORT IN SAN DIEGO COUNTY for rest and recreation. Situated on the cherry ranch of Loma Cereza, Mesa Grande, at elevation of 3350 feet. A motor trip of three hours over the most scenic roads in the mountains. HOME COOKING, HOME COMFORTS, HOME ATMOSPHERE. FINEST DANCING FLOOR and HOTEL EQUIPMENT. Beautiful swimming pool. Rates on application.

EDWARD H. DAVIS.

La Jolla Beach

Los Angeles & San Diego Beach Railway

"LA JOLLA LINE"

Cars leave Fourth and Broadway (Fourth street side of Grant Hotel)

45 Minutes Running Time between Terminals.

NORTHBOUND—TO LA JOLLA

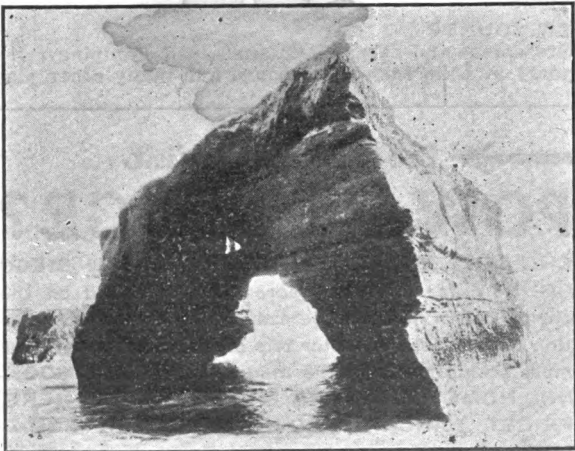
San Diego—	Daily Daily Daily Daily Daily Daily Daily Daily Daily Daily										Sat.	
	a. m.	a. m.	a. m.	a. m.	p. m.	p. m.	p. m.	p. m.	p. m.	p. m.	p. m.	Only
Lv. Fourth, near Broadway....	7:10	9:00	11:15	1:45	3:45	5:40	6:45	11:00				
Lv. Arctic and Ash Streets...	7:15	9:05	11:20	1:50	3:50	5:45	6:50	11:05				
Lv. Lamont St., Pacific Beach	7:36	9:25	11:39	2:11	4:11	6:06	7:11	11:26				
Lv. Pacific Beach (Ocean Fr't)	7:40	9:30	11:42	2:15	4:15	6:10	7:15	11:30				
Lv. Bird Rock.....	7:45	9:35	11:49	2:20	4:20	6:15	7:20	11:35				
Ar. La Jolla, Silverado Depot..	7:55	9:50	12:00	2:30	4:30	6:25	7:30	11:45				

SOUTHBOUND—TO SAN DIEGO

La Jolla—	Daily Daily Daily Daily Daily Daily Daily Daily Daily Daily										Sat.	
	a. m.	a. m.	a. m.	a. m.	p. m.	p. m.	p. m.	p. m.	p. m.	p. m.	p. m.	Only
Lv. Silverado Depot.....	6:10	7:30	10:15	12:45	2:35	4:40	5:40	7:20				
Lv. Bird Rock.....	6:19	7:39	10:26	12:54	2:45	4:45	5:49	7:27				
Lv. Pacific Beach (Ocean Fr't)	6:23	7:44	10:31	1:00	2:50	4:51	5:53	7:32				
Lv. Lamont St., Pacific Beach	6:28	7:48	10:36	1:04	2:54	4:55	5:58	7:53				
Lv. Arctic and Ash Streets....	6:50	8:10	10:55	1:24	3:14	5:15	6:20	7:35				
Ar. 4th near B'dway, San Diego	6:55	8:15	11:00	1:29	3:20	5:25	6:25	8:00				

LEMON GROVE

One of the garden spots of the county is lovely little LEMON GROVE. It consists of 500 acres of fine soil, subdivided into small tracts laid out mostly in full-bearing lemon trees. It has many beautiful homes and happy, prosperous citizens.



Cathedral Rock, La Jolla

National City and Chula Vista

SAN DIEGO ELECTRIC RAILWAY COMPANY National City and Chula Vista Line

Through cars between Union Station, San Diego, and
Third Street, Chula Vista, Via National City

(DAILY SCHEDULE)

Southbound		Northbound	
Leave	Leave	Leave	Leave
Union Station	3rd & Bdwy.	3d St. C'la V'ta	24th St. N. C.
*5:59 A. M.	6:03 A. M.	*5:47 A. M.	6:02 A. m.
6:39	6:43	*6:17	6:32
7:19	7:23	7:07	7:22
7:59	8:03	7:37	7 52
8:53	8:57	8:27	8:42
9:47	9:51	9:10	9:25
10:37	10:41	9:47	10:02
11:27	11:31	10:37	10:52
12:17 P. M.	12:21 P. M.	11:27	11:42
1:07	1:11	12:17 P. M.	12:32 P. M.
1:57	2:01	1:07	1:22
2:47	2:51	1:57	2:12
3:19	3:23	2:47	3:02
3:59	4:03	3:37	3:52
4:39	4:43	4:17	4:32
5:07	5:11	4:57	5:12
5:47	5:51	5:37	5:52
6:37	6:41	6:05	6:20
7:27	7:31	6:37	6:52
8:17	8:21	7:27	7:42
9:07	9:11	8:17	8:32
9:57	10:01	9:07	9:22
10:47	10:51	9:57	10:12
11:37	11:41	10:47	11:02
		11:37	11:52
		12:25	(Transfer to Potash Special for 3d & Bdwy)

POTASH SPECIAL

Southbound	Northbound
Leave	Leave
3rd & Bdwy.	Potash Plant
7:10 A. M.	8:42 A. M.
3:10 P. M.	4:42 P. M.
11:10 P. M.	12:45 A. M.

City Ticket Office and Lost Article Department
213 Broadway—Union Building



Dove & Robinson

Poster, Book and Job

PRINTERS

634 Third Street

San Diego, Cal.

El Cajon, Lakeside

Encanto, Lemon Grove, La Mesa, Santee

SAN DIEGO & ARIZONA R. R.

Motor Car Service from First and Broadway to Suburban Towns
LAKESIDE LINE

Ticket Office: Spreckels Building. Depot: 13th and N Sts.

EASTWARD		Daily													
	Ex. Sun.	A.M.	A.M.	A.M.	A.M.	A.M.	A.M.	A.M.	A.M.	P.M.	P.M.	P.M.	P.M.	P.M.	P.M.
Lv. San Diego (1st & B'dway)	7:05	8:50	10:55	2:05	3:20	5:10	6:10	9:20	11:15					
Lv. San Diego (13th & N Sts.)	5:05	7:13	8:58	11:03	3:28	5:18	6:18	9:28	11:22					
Lv. Encanto	5:22	7:30	9:16	11:22	3:47	5:35	6:35	9:45	11:39					
Lv. Lemon Grove	5:29	7:37	9:23	11:29	3:55	5:43	6:43	9:53	11:47					
Lv. La Mesa	5:36	7:43	9:30	11:35	4:01	5:49	6:49	9:59	11:53					
Lv. El Cajon	7:54	11:48	4:13	7:01	12:05				
Lv. Santee	8:03	11:54	4:21	7:10	12:13				
Ar. Lakeside	8:10	12:02	4:29	7:17	12:20				
		A.M.	A.M.	A.M.	A.M.	A.M.	P.M.	P.M.	P.M.	P.M.	P.M.	P.M.	P.M.	P.M.	P.M.

WESTWARD		Daily													
	Ex. Sun.	A.M.	A.M.	A.M.	A.M.	A.M.	A.M.	A.M.	A.M.	P.M.	P.M.	P.M.	P.M.	P.M.	P.M.
Lv. Lakeside	6:35	8:35	12:30	4:40	7:35					
Lv. Santee	6:44	8:43	12:38	4:48	7:43					
Lv. El Cajon	6:51	8:51	12:46	4:56	7:51					
Lv. La Mesa	5:50	7:03	9:03	9:45	12:58	3:17	5:08	6:08	8:03	10:15				
Lv. Lemon Grove	5:56	7:09	9:09	9:51	1:04	3:23	5:14	6:14	8:09	10:21				
Lv. Encanto	6:03	7:16	9:16	9:58	1:11	3:30	5:21	6:21	8:16	10:28				
Ar. San Diego (1st & Broadway)	6:27	7:40	9:40	10:22	1:35	3:55	5:45	6:45	8:40	10:53				
		A.M.	A.M.	A.M.	A.M.	P.M.	P.M.	P.M.	P.M.	P.M.	P.M.	P.M.	P.M.	P.M.	P.M.

	Daily	Ex. Sun.
Lv. San Diego (Union Station)	8:00	A.M.
Lv. Tia Juana	8:55	
Lv. Tecate	11:07	
Ar. Campo	11:50	A.M.

	Daily	Ex. Sun.
Lv. Campo	2:10	P.M.
Lv. Tecate	2:55	
Lv. Tia Juana	4:40	
Ar. San Diego (Union Station)	5:25	P.M.

Did You Ever

eat one of those delicious,

HOME-COOKED CHICKEN DINNERS
at the

Kenilworth Inn

At RAMONA, (CAL.) ?

No! Then go up there in time for dinner very soon. Take a suitcase, for you will want to stay; it is an ideal vacation spot. Address or call, MRS. I. M. KEARNEY, KENILWORTH INN, RAMONA, CAL.

Pickwick, United and White Star Stages

Between IMPERIAL VALLEY, SAN DIEGO and INTERMEDIATE POINTS

Lv. San Diego	8:00 a m	11:00 a m	2:00 p m	5:00 p m
" Dulzura	9:30 "	12:30 p m	3:30 "	6:30 "
" Potrero	10:20 "	1:20 "	4:20 "	7:20 "
" Campo	11:00 "	2:00 "	5:00 "	8:00 "
" Warrens Ranch	11:30 "	2:30 "	5:30 "	8:30 "
" Boulevard	12:15 p m	3:15 "	6:15 "	9:15 "
" Jacumba	12:35 "	3:35 "	6:35 "	9:35 "
" Mountain Spgs.	1:00 "	4:00 "	7:00 "	10:00 "
" Coyote Wells	1:45 "	4:45 "	7:45 "	10:45 "
" Dixieland	2:15 "	5:15 "	8:15 "	11:15 "
" Seeley	2:30 "	5:30 "	8:30 "	11:30 "
Ar. El Centro	3:00 "	6:00 "	9:00 "	12:00 "

Lv. El Centro	8:00 a m	11:00 a m	2:00 p m	4:00 p m
" Seeley	8:15 "	11:15 "	2:15 "	4:15 "
" Dixieland	8:30 "	11:30 "	2:30 "	4:30 "
" Coyote Wells	9:00 "	12:00 "	3:00 "	5:00 "
" Mountain Spgs.	9:45 "	12:45 p m	3:45 "	5:45 "
" Jacumba	10:15 "	1:15 "	4:15 "	6:15 "
" Boulevard	10:40 "	1:40 "	4:40 "	6:40 "
" Warren's R'nch.	11:20 "	2:20 "	5:20 "	7:20 "
" Campo	12:05 p m	3:05 "	6:05 "	8:05 "
" Potrero	12:35 "	3:35 "	6:35 "	8:35 "
" Dulzura	1:30 "	4:30 "	7:30 "	9:30 "
Ar. San Diego	3:00 "	6:00 "	9:00 "	11:00 "

DIRECT CONNECTIONS TO YUMA AND PHOENIX

EL CENTRO

For

SAN DIEGO TO LOS ANGELES

8 and 11 a. m.—2 and 4 p. m.

FOR CALEXICO AND HOLTVILLE

Cars leave every 30 minutes from 6:30 a. m. to 7 p. m.

FOR IMPERIAL AND BRAWLEY

Every 30 Minutes

DEPOT 470 MAIN STREET

Phone 129

EL CENTRO

CALEXICO

For SAN DIEGO

Autos will leave Calexico for San Diego at 7 a. m.

FARE ONE WAY, \$5.00—ROUND TRIP FARE \$8.90

Cars leave every 30 minutes from 7 a. m. to 7 p. m. for

EL CENTRO, HOLTVILLE, IMPERIAL, BRAWLEY

Cars Leave From

PICKWICK STAGE DEPOT

Second St., Cor. Rockwood Ave.

TEL. CALEXICO 95

EL CENTRO 129

HOLTVILLE AND EL CENTRO

Cars for Holtville every 30 minutes—7:00 A. M. to 7:00 P. M.

IMPERIAL AND EL CENTRO

Cars for Imperial every 20 minutes—7:00 A. M. to 7:00 P. M.

Direct connections at Imperial for Brawley, Calipatria; Brawley to Westmoreland.

Phone Pickwick Stages 129.

Depot, 470 Main Street, El Centro.

Pickwick and United Stages

LOS ANGELES — Coast Route

LEAVE SAN DIEGO

Morning Stages

Stages leave also at 7:00 a. m. and 11:00 a. m.

Lv. San Diego	8:00 a m	9:00 a m	11:00 a m
" Oceanside	9:45 "	10:40 "	12:40 "
" Capistrano	10:45 "	12:45 "	2:45 "
" Santa Ana	11:45 "	1:45 "	3:45 "
Ar. Los Angeles	1:00 p m	2:30 p m	4:30 p m

Afternoon Stages

Stages leave also at 2:00 p. m., 3:00 p. m. and 5:00 p. m.

Lv. San Diego	1:00 p m	4:00 p m	7:00 p m
" Oceanside	2:40 "	5:15 "	8:15 "
" Capistrano	4:45 "	6:15 "	9:15 "
" Santa Ana	5:45 "	7:15 "	10:15 "
Ar. Los Angeles	6:30 "	9:00 "	12:00 "

LEAVE LOS ANGELES

Morning Stages

Stages leave also at 7:00 a. m. and 10:00 a. m.

Lv. Los Angeles	8:00 a m	9:00 a m	11:00 a m
" Santa Ana	9:15 "	10:15 "	12:15 p m
" Capistrano	10:15 "	11:15 "	1:15 "
" Oceanside	11:15 "	12:15 "	2:15 "
Ar. San Diego	1:00 "	2:30 "	4:00 "

Afternoon Stages

Stages leave also at 2:00 p. m., 4:00 p. m. and 7:00 p. m.

Lv. Los Angeles	1:00 p m	3:00 p m	5:00 p m
" Santa Ana	2:15 "	4:15 "	6:15 "
" Capistrano	3:15 "	5:15 "	7:15 "
" Oceanside	4:15 "	6:15 "	8:15 "
Ar. San Diego	6:00 "	8:00 "	10:00 "

Inland Route

FROM SAN DIEGO TO

	Miles	Time	Single	R. T.
Lv. San Diego		8:00 a. m.		
Escondido	35	9:45 a. m.	\$1.50	\$2.50
San Marcos	41	10:00 a. m.	1.75	3.00
Vista	47	10:25 a. m.	2.00	3.50
Bonsall	54	10:45 a. m.	2.25	4.00
Fallbrook	62	11:00 a. m.	2.50	4.50
Rainbow	70	11:20 a. m.	2.75	5.00
Temecula	77	11:45 a. m.	3.25	6.00
Murrieta Springs	83	12:10 p. m.	3.50	6.50
Murrieta	86	12:20 p. m.	3.50	6.00
Elsinore	98	8:15 a. m.	1:15 p. m.	3.75 7.00
Perris	110	8:45 a. m.	1:45 p. m.	4.00 7.50
Riverside	128	9:20 a. m.	2:30 p. m.	4.00 7.50
Ontario	145	9:50 a. m.	3:00 p. m.	4.00 7.50
Pomona	151	10:20 a. m.	3:15 p. m.	4.00 7.50
Ar. Los Angeles	185	11:45 a. m.	5:00 p. m.	4.00 7.50

FROM LOS ANGELES TO

	Miles	Time	Single	R. T.
Lv. Los Angeles		2:30 p. m.		
Pomona	34	3:15 p. m.		
Ontario	40	3:30 p. m.		
Riverside	58	4:45 p. m.	10:45 a. m.	\$1.75 \$2.50
Perris	75	5:20 p. m.	11:30 a. m.	2.25 4.00
Elsinore	87	5:45 p. m.	12:30 p. m.	2.50 4.50
Murrieta	99		1:00 p. m.	3.00 5.00
Murrieta Springs	103		1:15 p. m.	3.00 5.00
Temecula	109		1:30 p. m.	3.25 5.50
Rainbow	116		1:50 p. m.	3.25 5.50
Fallbrook	123		2:15 p. m.	3.25 5.50
Bonsall	130		2:30 p. m.	3.25 5.50
Vista	138		2:45 p. m.	3.25 5.50
San Marcos	144		3:05 p. m.	3.25 5.50
Escondido	150		3:30 p. m.	3.25 5.50
Ar. San Diego	185		5:00 p. m.	4.00 7.50

ALL NIGHT SERVICE---We Never Close

All Stages leave from

UNION STATION

First and E Sts., Next to Spreckels Theatre Bldg.

Phones: Main 340, Home 1555

SAN DIEGO - - CALIFORNIA

PICKWICK STAGES

ESCONDIDO 4 Times Daily

Lv. San Diego.....	8:00 a. m.	10:00 a. m.	2:00 p. m.	5:00 p. m.
Ar. Poway Corners	9:00 a. m.	11:00 a. m.	3:00 p. m.	6:00 p. m.
Ar. Bernardo	9:30 a. m.	11:30 a. m.	3:30 p. m.	6:30 p. m.
Ar. Escondido	9:45 a. m.	11:45 a. m.	3:45 p. m.	6:45 p. m.

RAMONA, JULIAN AND PINE HILLS

			S. T.	R. T.
Lv. San Diego.....	8:30 a m	4:00 p m
Lv. Lakeside	9:40 "	5:10 "	\$1.00	\$1.50
Lv. Dexter	9:50 "	5:15 "	1.00	1.60
Lv. Foster	10:00 "	5:30 "	1.25	2.00
Lv. Mussey's	10:10 "	5:40 "	1.50	2.25
Lv. Shady Dell	10:25 "	5:55 "	1.50	2.50
Lv. Earl School	10:35 "	6:05 "	1.75	3.00
Lv. Ramona	10:45 "	6:15 "	1.75	3.00
Lv. Ballena	11:15 "	6:45 "	2.00	3.50
Lv. Witch Creek	11:30 "	7:00 "	2.25	4.00
Lv. Santa Ysabel	11:45 "	7:15 "	2.50	4.50
Lv. Wynola	12:00 "	7:30 "	2.60	4.75
Ar. Julian	12:15 p m	8:15 "	2.75	5.00
Ar. Pine Hills	12:30 "	...	3.25	6.00

Returning, leave Pine Hills, 8:00 a. m., arrive San Diego 11:45 p. m.

While at Ramona visit the Kenilworth Inn, one of the finest hotels in the Back Country. Chicken dinner every Sunday.

Connections at Ramona for

MESA GRANDE

Conection at Santa Ysabel for

WARNER HOT SPRINGS

DESCANSO

		Miles	S. T.	R. T.
Lv. San Diego	9:00 a. m.			
Ar. El Cajon	9:45 a. m.	16	\$.65	\$1.00
Ar. Bostonia	10:00 a. m.	19	.75	1.25
Ar. Lake View	10:10 a. m.	22	.90	1.50
Ar. Flinn Springs	10:30 a. m.	25	1.00	1.75
Ar. Ye Alpine Tavern	10:45 a. m.	30	1.25	2.25
Ar. Alpine Store	10:50 a. m.	31	1.25	2.25
Ar. The Willows	11:00 a. m.	34	1.25	2.50
Ar. Viejas Valley	11:15 a. m.	37	1.50	2.75
Ar. Descanso	11:30 a. m.	43	2.00	3.75
Ar. Ellis Ranch	12:00	m. 45	2.00	3.75
Ar. Oakzanita	12:30 p. m.	51	2.25	4.25

Leave Ellis Ranch at 1:30 p. m.
Arrive in San Diego at 4:30 p. m.

PICKWICK STAGES

CONNECTIONS OUT OF LOS ANGELES:

SAN FRANCISCO BY COAST ROUTE

	One Way.	R. Trip
SAN FRANCISCO.....	\$12.00	\$22.00
San Jose.....	11.00	21.00
Salinas	10.00	19.00
Paso Robles	7.50	14.00
Atascadero	7.25	13.00
San Luis Obispo	6.75	12.50
Santa Maria	6.50	12.00

Daily Service to San Francisco
Leave Los Angeles 8:00 a. m.

FILLMORE and SANTA PAULA

Leave Los Angeles..... 8:30 a m 4:00 p m
Fillmore....\$1:50 S. T. Santa Paula..\$1.75 S. T. \$3.25 R. T.

SANTA BARBARA LINE

SANTA BARBARA	\$ 2.75	\$5.00
Ventura	2.00	3.75
Oxnard	1.75	3.25
Camarilla	1.50	2.75

7:00 a. m., 8:00, 9:30, 11:00, 12:30 p. m., 2:00, 3:30, 5:00; 1:30
a. m. daily; 7:00 p. m. Ventura and Oxnard Sundays only.

SAN JACINTO	\$ 2.75	\$ 5.00
Riverside	1.75	3.00
Perris	2.25	4.00
Corona	1.75	

8 a. m., 2 p. m. Daily.

PICKWICK AUTO STATION

Phones: F-4159—Pico 445

617 South Hill St.

LOS ANGELES, CAL.

Churches & Religious Societies

ADVENT CHRISTIAN

First Advent Christian Church (not Seventh Day), Kansas and Landis Sts.; Pastor, Rev. S. Forsey.

BAPTIST

First, 10th and E..... Rev. Frank O. Belden
 Grand Avenue, 20th and Newton.....Rev. R. E. Day
 Scott Memorial, Normal Heights.....
 Swedish Bethel, 16tr and E.....Rev. J. A. Carlson
 Ocean BeachRev. U. G. Hobson

CHRISTIAN

Central, F and 9th.....Rev. Wm. E. Crabtree
 University-Cleveland-Richmond....Rev. T. S. Hansaker

CHRISTIAN SCIENCE

First Church of Christ, Scientist, Second and Laurel.....
 Second Church of Christ, Scientist, 949 Ninth St.....

CONGREGATIONAL

First, 6th and A.....Rev. W. B. Thorp
 Logan Heights, Sampson and Kearny....Rev. F. C. Reid
 Mission Hills, Jackdaw and Gettie....Rev. H. B. Roberts
 Park Villa, Idaho and Landis.....Rev. Isaac Cookman
 Union, La Jolla.....Rev. Shelton Bissell

EPISCOPAL

All Saints, Sixth and Pennsylvania.....
 St. James, Kearney, near Evans.....Rev. H. K. Glover
 St. James-by-the Sea, La Jolla.....
 St. Paul's, Eighth and C.....Rev. C. L. Barnes
 Christ Church, Coronado.....Rev. Chas. E. Spalding

FRIENDS

Nineteenth and H.....Rev. B. H. Albertson

JEWISH REFORMED

Temple Beth Israel, Second and Beech.....

JEWISH ORTHODOX

Congregation Tifereth Israel, 1137 Market St., near 12th

EVANGELICAL LUTHERAN

Bethesda, Swedish, 725 Broadway, Room 37.....
Rev. C. Arthur Johnson
 First English, 2nd St., near A..Rev. Edward P. Schueler
 German, 2003 Woolman.....Rev. Paul Scherf
 Grace English, Park Blvd. and Lincoln.....
Rev. C. Damschroeder
 Our Saviour's (Norweg.-Eng.), Park Blvd. and Center,
Rev. J. A. E. Naess

METHODIST EPISCOPAL

Central, Sampson and Harrison....Rev. Arthur E. Schlitz
 First, C and Ninth.....Rev. Lincoln A. Ferris
 First German, Siteenth and I.....Rev. G. C. Poll
 Fray Heights, Ray and Upas.....Rev. W. H. Rogers
 Mission Heights, Falcon and Douglas.....
 Taylor, University and Campus.....Rev. M. G. Wenz

METHODIST EPISCOPAL (SOUTH)

Park Place, Fifth and Olive.....Rev. W. J. Sims

NEW JERUSALEM (SWEDENBORGIAN)

Tyler and Campus.....Rev. Howard C. Dunham

PENTCOSTAL CHURCH OF THE NAZARINE

Foureenth, between D and E.....Rev. A. M. Bowes

PRESBYTERIAN

Brooklyn Heights, Thirtieth and Fir.....
 Coronado.....Rev. E. E. Berger
 First, Third and Date.....Rev. E. F. Hallenback
 First, La Jolla.....Rev. Paul Elliott
 Westminster.....Rev. W. A. Jackson
 East San Diego Presbyterian.....Rev. J. C. Dible

ROMAN CATHOLIC

Lady of the Sacred Heart, Copeland and Anne.....
 Our Lady of the Angels, Twenty-fourth and G.....
 St. Agnes, Point Loma.....
 St. Joseph's, Third and Beech.....
 St. Vincent, Mission Hills, Hawk and Ft. Stockton.....

SEVENTH DAY ADVENTIST

Eighteenth Street, 18th and G....Elder C. F. Falkenberg
 University, Polk and Illinois.....Elder R. S. Owen
 Paradise Valley Sanitarium.....Elder J. A. Burden

SWEDISH SALEM

Nineteenth and E Streets.....Rev. E. J. osberg

UNITARIAN

First, 6th and Cedar.....Rev. H. E. Bard

UNIVERSAL BROTHERHOOD AND THEOSOPHICAL SOCIETY

International Headquarters, Point Loma.....

UNITED BRETHREN IN CHRIST

Third and Robinson.....Miss Myrtle Todd

UNITED PRESBYTERIAN

Golden Hill, Twenty-second and H..Rev. M. M. Kilpatrick

YOUNG MEN'S CHRISTIAN ASSOCIATION

Eighth and C.....

YOUNG WOMEN'S CHRISTIAN ASSOCIATION

Seventh and Broadway.....

SALVATION ARMY

932 Third Street, opposite Plaza.....
Adjt and Mrs. Cozens in Charge

SAN DIEGO RESCUE MISSION (Inc.)

334-336 F Street.....Tom Nowell, Supt.

HOTEL ALBANY

UNION AND E STREETS

MRS. F. S. SANDFORD, Mgr.

Headquarters for Mothers and Wives of Men in Uniform

CLEAN—COMFORTABLE—HOMELIKE

Large Ground Floor Lobby and Writing Room

HOT AND COLD WATER. FREE BATH. STEAM HEAT

One Block From Postoffice and Cars

RATES, 50c TO \$2.00 PER DAY
WEEKLY RATES

Steaks and Coffee : : :
Waffles and Hot Cakes

Clean and Quick Service
Home Made Pies & Pastry

The Palm Cafe

Sixth near Broadway

Wholesome Family Meals
Well Served

Phone Main 1639

Open 5:30 a. m. to 9 p. m.

Ask Anderson --- he knows!

For accurate and detailed information about San Diego and its surroundings, ask MR. A. H. ANDERSON OF THE PLAZA INFORMATION BUREAU, CORNER OF THIRD AND BROADWAY. Mr. Anderson answers about 10,000 questions a month, is always glad to be of help to strangers, especially Uncle Sam's boys, and makes no charge for his services. You can call on him for assistance. : : : :

“SATISFYING”

Describes

The Penox
CAFETERIA

1058 Fifth Street

(Down-stairs)

Home-Made Pastry and Salads

and a Good Variety of Meats and Vegetables

New Indirect Lighting. Lobby and Phones for Patrons.
The Best Equipped Cafeteria in the City—employing only white help.

MR. MOTORIST!

G.L.W.



ASK YOUR DEALER

SPRING OILERS

To make your visit more enjoyable eat at

RUDDER'S

Cafe and Bohemian Grill

The Very Best of Everything to Eat at Sensible Prices

Try Our 35c Noon Day Lunch

Music at Lunch, Dinner and After Theatre
Chicago Philharmonic Lady Quartet

The only restaurant of class, with perfect service and excellent cuisine, with a \$10,000 pipe organ used with orchestra, in California. Attention is called to our week day luncheon. Private dining rooms for small or large parties. Entrance on Broadway or on Second street, UNION BUILDING, San Diego.

HARRY RUDDER, Proprietor—Established 1894

STRANGERS -- In Case of Emergency---

If you do not know a physician, or if your physician is out and you wish to find him, or if you must have another in his stead, call MAIN 3862, OR HOME 2558—THE PHYSICIANS' AND SURGEONS' TELEPHONE EXCHANGE.

Also Nurses' Official Directory—Graduate Nurses Only.

The Pioneer Carpet Cleaning Works

751 FIRST STREET

Thirty years' valuable experience.
Sanitary cleaning process that kills all moths and insects. Rugs cleaned to stay clean.
Careful handling of rugs and carpets by experts.
References: 400 leading homes in San Diego; 50 leading homes in Coronado; many others in the county.

C. D. ALLEN, Mgr.

PACKING for STORING
and SHIPPING

OUR SPECIALTIES—Oriental and
Indian Rugs and Blankets

Main 533

Home 1534 Hillcrest 451