

---

---

HISTORY  
of  
The Crookedest Railroad  
on Earth



GENERAL OFFICES  
Rapid City, South Dakota

---

---

# Rapid City Black Hills & Western Railroad Company

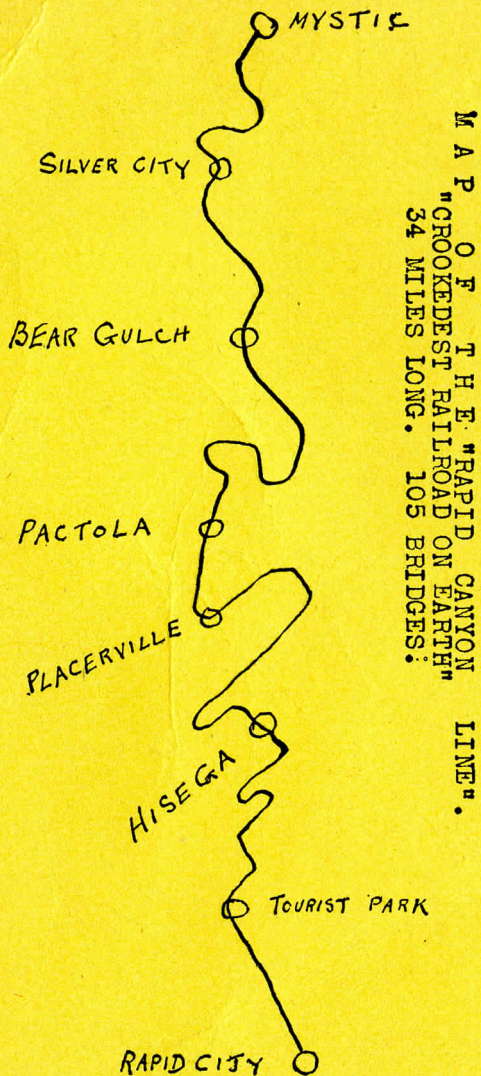
## "Rapid Canyon Line"

operates a line of standard gauge railroad from Rapid City, South Dakota, on the East, to Mystic, South Dakota, on the West, a distance of 35 miles, connecting with the Chicago & Northwestern and the Chicago, Milwaukee & St. Paul Railway Companies at Rapid City and the Chicago, Burlington & Quincy Railroad Company at Mystic.

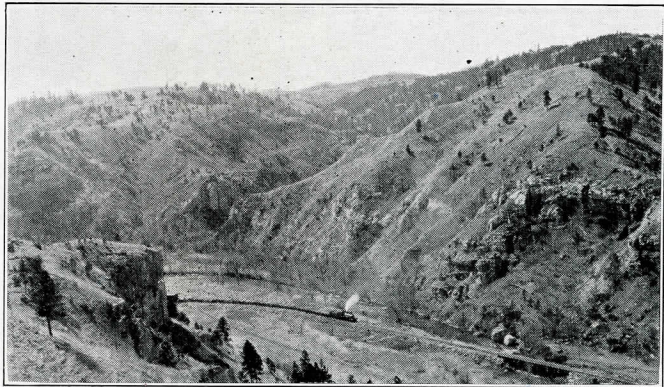
The "Rapid Canyon Line" is the only railroad operating through the Black Hills from East to West and it serves as a connecting short link between the oil and coal fields of Wyoming, Utah, Colorado, together with lumber from the North Pacific Coast and the fruit from California, Washington and Oregon points to the Eastern Dakotas and Western Minnesota, this together with many hundreds of cars of range cattle moving to the plains of South Dakota, East from Rapid City, moving from Texas, New Mexico, and Arizona.

The actual distance (air line) between Mystic and Rapid City is 19½ miles, however, the rail distance is 35 miles, this on account of the mountainous character of the territory traversed. The entire 35 miles of this Railroad lies in the bottom of Rapid River Canyon, crossing the river 105 times, and its curvature is such that the sum of the curves would make 14 complete circles.

Traveling from Rapid City to Mystic on the Rapid Canyon Line, the difference in elevation

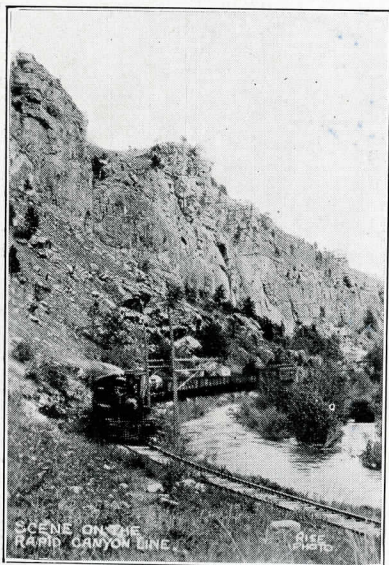


As Seen From Trains on  
"Rapid Canyon Line"



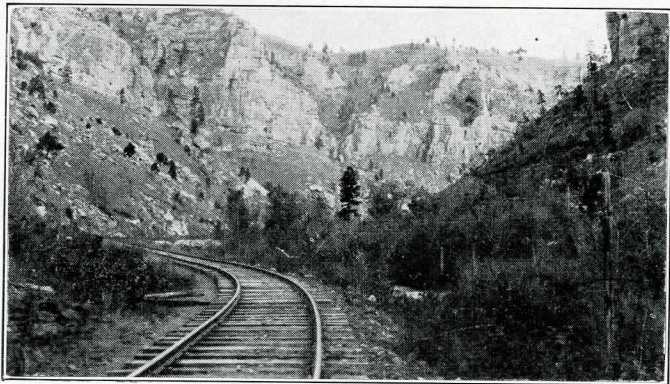
Canyon Gate

As Seen From Trains on  
"Rapid Canyon Line"



Dark Canyon

As Seen From Trains on  
"Rapid Canyon Line"



Prairie Creek Canyon

is 1790 feet, Mystic being only a few feet less than one mile above sea level. Mystic is the point of connection with the Deadwood-Edgemont line of the Burlington.

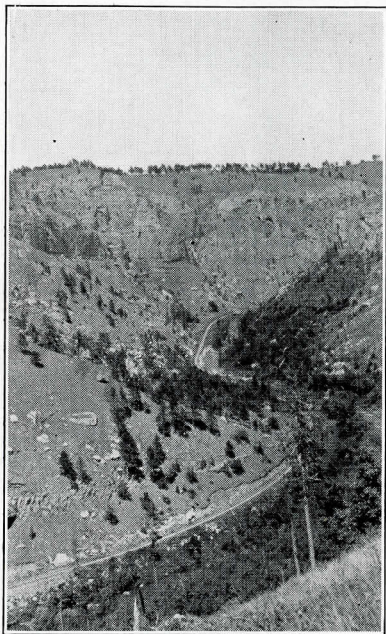
The Canyon of Rapid River has been widely known for years past as being wealthy in mineral resources, and during the gold mining period, the First National Bank of Rapid City paid for gold taken from Rapid River Canyon, in excess of \$2,000,000.00.

Evidence on all sides of early day placer mining operations are to be seen from the Rapid Canyon Line. One of the early day placer mining enterprises was the construction of a flume for placer mining. Since mining operations have ceased, this flume has been extended and developed into a hydroelectric plant that supplies electrical energy to Rapid City, Deadwood, Lead, Whitewood and sundry other municipalities in the Black Hills, the flume being adjacent to and can be seen high up in the mountains along the Rapid Canyon Line.

The mountains along Rapid Canyon are covered with Black Hills pine and spruce and lumbering is a very large industry in this section; the Warren-Lamb Lumber Company of Rapid City investing almost \$150,000.00 in the construction of a water flume for the bringing of logs from points some seven miles distant from the rails of the Rapid Canyon Line, that approximately 3,000 cars of logs, from otherwise inaccessible places, can be brought to their mills annually and thereby utilized for the benefit of the public.

It has been said that there is located in the Black Hills, all the known metals and a very

**As Seen From Trains on  
"Rapid Canyon Line"**



**Canyon Park**

large percentage are found along Rapid River Canyon, together with Black, Green and Red granites.

Along the Rapid Canyon there can be found 214 different varieties of wild flowers, which with the frequent sight of deer and elk make the Canyon of Rapid River different from the usual.

Rapid River Canyon is becoming famed for the holding of conventions for the sundry church denominations, and many new cottages are being constructed by parties from miles distant, and especially are the summer colonies of Hisega and Silver City becoming popular for the erection of summer homes.

The 35 miles, and every foot of the Canyon of Rapid River the Rapid Canyon Line follows, is first class trout fishing ground, none better, for Rainbow, Speckled and Loch Leven, some running in weight up to seven pounds.

Rapid City Tourist Park is one of the few parks that the individual tourist leaves with regrets, carrying fond recollections of it with him on his travels, and is heard to repeat often after leaving and at other camp grounds. "if we only had Rapid City Tourist Park here with its fine fishing, bathing, shade plus other comforts, we would be happy."

While the heights are not as gigantic as the Yellowstone, Glacier or other Rocky Mountain Parks, you will agree with us that no scenery between the Atlantic and Pacific Coasts can compare with the Grand Canyon of Rapid River," traversed its entire length by the "Crookedest Railroad in the World."

Reduced round trip fares between all stations.

Open observation cars are operated on all passenger trains.

Parties of 50 or more passengers, using Adult fares to same destination, will be handled by Special Train at convenience of the party.

JOHNSTON & BORDEWYK, INC.  
RAPID CITY, S. D.

## The Rapid Canyon Line

---

If you're looking for an outing,  
Let me do a little scouting,  
For I know about a place that's surely fine.  
Come to Frink's for dinner,  
'Cause your appetite's a winner,  
When you spend a day upon our little line.

There is surely lots of fishing,  
Mountain climbing to your wishing,  
And resting places you will find without an  
end.

There are many shady bowers,  
And don't forget the flowers,  
You will surely want to show them to a  
friend.

Now you may be sort of guessing  
That's a thing that's most distressing,  
Do not do it; let the trouble be all mine  
But for many happy hours  
In the sunshine, shade and flowers  
Take a trip upon the RAPID CANYON LINE.



