

# Baltimore & Ohio Railroad



System  
Time Tables

Please Keep For Reference

No. 11, 1922

# Baltimore & Ohio Railroad



System  
Time Tables

Please Keep For Reference

No. 11, 1922

# NOTICE OF TEMPORARY CHANGES

IN

## Baltimore and Ohio Railroad Train Schedules.

Baltimore, Md., November 1st, 1922.

Due to operating conditions existing on the Baltimore and Ohio Railroad at the present time, the following train service adjustments have been temporarily made, and passengers are cautioned to be guided by these changes in using this Time Table.

The attached folder does not contain these changes which are of a temporary nature only, and this notice is consequently issued to avoid confusion on the part of passengers.

These changes also involve a number of adjustments in Pullman Car Service, and passengers are kindly requested to consult Ticket Agents regarding the temporary arrangement of Pullman Car Lines.

### THROUGH TRAINS

Train No.	TEMPORARILY DISCONTINUED	Shown in Following
		Tables of Attached Folder.
		Tables Nos.
7	Washington to Chicago.....	1-22-24-29-31-72
10	Chicago to Washington.....	2-23-30-32-71
11	Parkersburg to Cincinnati.....	1-33-35-52
12	Cincinnati to Parkersburg.....	2-11-13-17-23-30-34-36
23	Cincinnati to St. Louis.....	1-37
24	St. Louis to Cincinnati (see Note No. 1)	2-38

### CORRECTIONS

**Trains Nos. 7 and 10, between Washington and Chicago, and Nos. 51 and 52, between Toledo and Cincinnati, have been restored to service.**

### LOCAL TRAINS—EASTERN LINES

23	Cumberland to Pittsburgh.....	29-72
24	Pittsburgh to Cumberland.....	30-71
53	Cumberland to Grafton.....	33-52
55	Grafton to Wheeling.....	52
56	Wheeling to Cumberland.....	34-52
56	Strasburg Junction to Frederick.....	21-24
71	Parkersburg to Kenova.....	3-43
72	Kenova to Parkersburg.....	3-44
73	Weverton to Hagerstown.....	20-22-25-29
74	Hagerstown to Brunswick.....	25
75	Pittsburgh to Wheeling.....	3-39
76	Wheeling to Pittsburgh.....	3-40
407	Frederick to Strasburg Junction.....	20-24

### LOCAL TRAINS—WESTERN LINES

Train No.	TEMPORARILY DISCONTINUED	Shown in Following
		Tables of Attached Folder.
		Tables Nos.
37	Garrett to Chicago.....	31
38	Chicago to Garrett.....	32
40	Cleveland to Valley Junction.....	77
41	Valley Junction to Cleveland.....	78
41	Newark to Sandusky.....	31
42	Sandusky to Newark.....	32
42	Beardstown to Pana.....	96
43	Pana to Beardstown.....	96
47	Flora to Shawneetown.....	97
48	Shawneetown to Flora.....	97
47	Chillicothe to Cincinnati (see Note No. 4)	35
48	Cincinnati to Chillicothe.....	36
50	Louisville to North Vernon.....	81
51	Toledo to Cincinnati.....	9-42
51	Parkersburg to Portsmouth.....	35-82
52	Cincinnati to Toledo.....	9-41
53	Cincinnati to Louisville.....	9-42
54	Portsmouth to Parkersburg.....	36-82
57	Bridgeport to Cleveland (see Note No. 5)	79
60	Cleveland to Bridgeport (see Note No. 6)	79
60	North Vernon to Cincinnati.....	38
59-759	Dayton to Cincinnati.....	42
60-760	Cincinnati to Dayton.....	41
61	Wheeling to Columbus.....	39
62	Columbus to Wheeling.....	40
64	Cincinnati to Dayton.....	41
65	North Vernon to Vincennes.....	37
66	Vincennes to North Vernon.....	38
73	Dayton to Cincinnati.....	42
67	Chillicothe to Dayton.....	88
70	Dayton to Chillicothe.....	88
67	Barton to St. Clairsville.....	79
68	St. Clairsville to Barton.....	79

Note No. 1—During the discontinuance of Train No. 24, Train No. 2 will leave St. Louis 9.00 a. m., instead of 12.05 p. m., making same stops between St. Louis and Cincinnati as formerly made by Train No. 24, arriving Cincinnati 6.30 p. m.

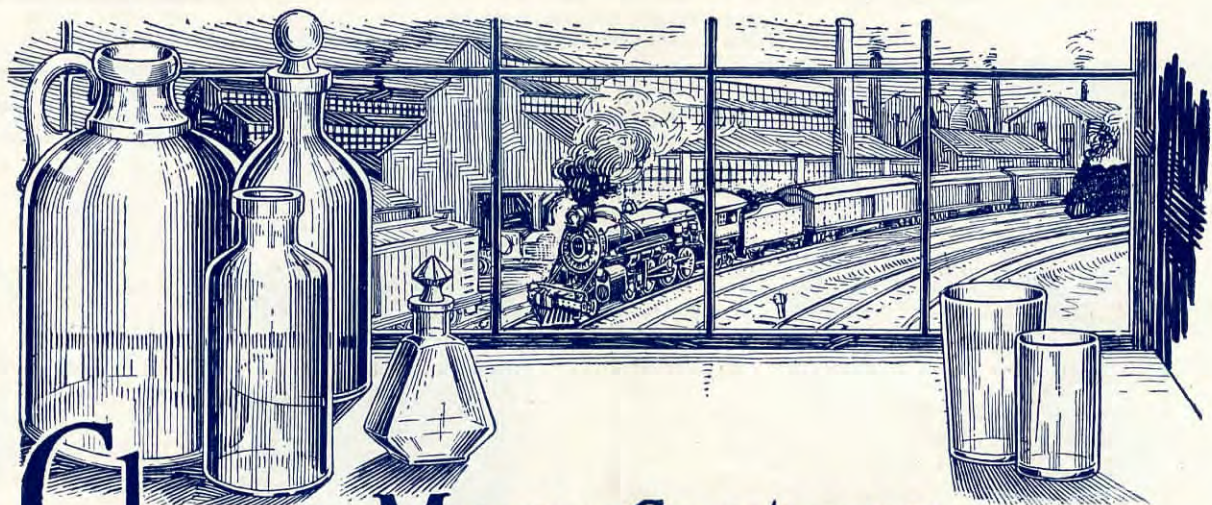
Note No. 4—During the discontinuance of Ohio Division Train No. 47, Train No. 37 will stop on signal at Windsor, Pleasant Plains, Cozaddale, Hills, Symmes, Remington, Madera and Madisonville, O.

Note No. 5—During the discontinuance of Train No. 57, Train No. 59 will be operated daily.

Note No. 6—During the discontinuance of Train No. 60, Train No. 58 will be operated daily.

W. B. CALLOWAY, Passenger Traffic Manager, Baltimore, Md.

THESE PAGES ARE RESERVED FOR THE  
USE OF THE OFFICE OF THE  
COMMISSIONER OF THE  
REVENUE DEPARTMENT  
AND ARE NOT TO BE  
REPRODUCED OR  
CIRCULATED  
WITHOUT THE  
APPROVAL OF THE  
COMMISSIONER.



# Glass Manufacture *on the* Baltimore & Ohio Railroad

The largest plants in the United States for the manufacture of bottles, window glass and polished wire glass are located in cities reached by the Baltimore and Ohio Railroad. The automatic machines which are used in these plants are famous throughout the industrial world. Food products in American glass containers made in these cities help feed the world. The American glass industry, over 300 years old, leads all nations.

The investigations of Dr. G. P. Grimsley, Geological Engineer of the Baltimore and Ohio Railroad, show that the necessary raw materials for glass manufacture are found on this railroad convenient to the 170 plants located in its cities; further that there are available large deposits of white silica sand, 99% pure, inexhaustible limestone deposits, 98% pure, large soda chemical plants and high grade gas coals from over 700 mines within Baltimore and Ohio territory.

The cities served by the BALTIMORE and OHIO RAILROAD during the year 1921 produced 50 million feet of window glass, or 37% of the total output of the country. In these cities are located 44.7% of the pressed and blown ware plants, 30% of bottle and hollow ware

plants, 51% of the window glass plants, or 40.5% of all glass plants in the United States.

The Baltimore and Ohio with its 5,000 miles of railroad through eleven states with total population of over 45,000,000 connects these glass plants by fast freight service with the principal American markets and with modern tidewater terminals at Baltimore, Philadelphia and New York for export.

The Commercial Development Department of the Baltimore and Ohio Railroad is organized for service to those seeking industrial locations best suited to their needs, and for the development of the latent industrial resources along its railroad lines. Practical briefs on economic plant locations are prepared without charge by a corps of trained men. For further information, address—

H. O. Hartzell, Manager Commercial Development,  
**Baltimore & Ohio Railroad**  
Baltimore, Md.

# THE BALTIMORE & OHIO RAILROAD COMPANY

## EXECUTIVE ORGANIZATION

DANIEL WILLARD, President, Baltimore, Md.

GEO. M. SHRIVER, Senior Vice-President, and in Charge of Accounting, Baltimore, Md.  
 Claim, Treasury and Relief Departments.  
 F. C. BATCHELDER, Vice-President, Executive Representative in Chicago, Chicago, Ill.  
 C. W. SALLOWAY, Vice-President in Charge of Operation and Maintenance, Baltimore, Md.  
 ARCHIBALD FRIES, Vice-President in Charge of Traffic and Commercial Development Departments, Baltimore, Md.

GEO. H. CAMPBELL, Assistant to President, Baltimore, Md.  
 J. S. MURRAY, Assistant to President, " "  
 E. C. WASHBURN, Assistant to President, New York  
 C. W. WOOLFORD, Secretary, Baltimore, Md.  
 GEO. F. MAY, Assistant Secretary, " "  
 E. M. DEVEREUX, Treasurer, " "  
 JOHN J. CORNWELL, General Counsel, " "

## TRAFFIC DEPARTMENT

ARCHIBALD FRIES, Vice-President, Baltimore, Md.

### PASSENGER

W. B. CALLOWAY, Passenger Traffic Manager, Baltimore, Md.

O. P. McCARTY, Assistant to Passenger Traffic Manager, Baltimore, Md.  
 J. P. DUGAN, General Baggage and Milk Agent, " "  
 W. E. LOWES, General Passenger Agent, " "  
 GEO. W. SOUIGGINS, General Passenger Agent, Cincinnati, O.  
 W. G. BROWN, General Passenger Agent, Chicago, Ill.

H. B. FAROAT, Assistant General Passenger Agent, Baltimore, Md.  
 JOS. P. TAGGART, Assistant General Passenger Agent, Fittsburgh, Pa.  
 E. D. AINSLIE, Assistant General Passenger Agent, St. Louis, Mo.  
 J. B. SCOTT, General Eastern Passenger Agent, New York, N. Y.

### FREIGHT

GOLDER SHUMATE, General Freight Traffic Manager, Baltimore, Md.

O. S. LEWIS, Freight Traffic Manager, Eastern Region, Baltimore, Md.  
 STUART A. ALLEN, Freight Traffic Manager, Northwest Region, Chicago, Ill.  
 H. P. LEWIS, Freight Traffic Manager, Southwest Region, Cincinnati, O.  
 W. F. RICHARDSON, Freight Traffic Manager, New York, N. Y.  
 GEO. M. KRIDLER, Asst. Freight Traffic Manager, Chicago, Ill.  
 SAMUEL STRACHAN, Asst. to General Freight Traffic Manager, Baltimore, Md.  
 W. T. MOORE, Asst. to General Freight Traffic Manager, Baltimore, Md.  
 C. S. WIGHT, General Freight Representative, Cincinnati, O.  
 S. T. McLAUGHLIN, Assistant to Freight Traffic Manager, Baltimore, Md.  
 H. M. MATTHEWS, Coal Traffic Manager, " "  
 H. A. COCHRAN, Assistant Coal Traffic Manager, " "  
 T. J. WALTERS, General Coal Freight Agent, " "  
 F. M. JORDAN, Coal Freight Agent, Pittsburgh, Pa.  
 C. H. ASHAR, Coal Freight Agent, Cincinnati, O.  
 J. A. SCHEUERMAN, Coal Freight Agent, Cleveland, O.  
 G. V. KEITH, Coal and Coke Representative, Chicago, Ill.  
 F. J. COUSE, Foreign Freight Traffic Manager, Baltimore, Md.  
 M. W. PRYOR, Foreign Freight Agent, " "  
 EARLE C. WIGHT, Assistant Foreign Freight Agent, New York, N. Y.  
 A. F. ROLOSON, Foreign Freight Agent, Philadelphia, Pa.  
 HARRY ATKINSON, Foreign Freight Agent, Baltimore, Md.  
 R. A. EBE, General Live Stock Agent, Baltimore, Md.

E. D. CURTIS, Assistant General Live Stock Agent, Pittsburgh, Pa.  
 General Dairy Freight Agent, Chicago, Ill.  
 SAMUEL HOUSE, General Freight Agent, Baltimore, Md.  
 W. W. BLAKELY, General Freight Agent, Pittsburgh, Pa.  
 H. H. MARSH, General Freight Agent, Wheeling, W. Va.  
 P. D. FRIEBER, General Freight Agent, Cincinnati, O.  
 E. B. TULLIS, General Freight Agent, Chicago, Ill.  
 EDWARD HART, Jr., General Freight Agent, St. Louis, Mo.  
 J. G. FRY, General Southwestern Freight Agent, Baltimore, Md.  
 GEO. S. HARLAN, Assistant General Freight Agent, " "  
 C. S. ROBERTS, Assistant General Freight Agent, " "  
 H. G. SETTLE, Assistant General Freight Agent, " "  
 JOHN H. CARROLL, Jr., General Freight Agent, Philadelphia, Pa.  
 A. L. DOGGETT, Assistant General Freight Agent, Fittsburgh, Pa.  
 J. C. KIMES, Assistant General Freight Agent, Cleveland, O.  
 J. C. MILLER, Assistant General Freight Agent, Chicago, Ill.  
 J. W. MELONE, Assistant General Freight Agent, Baltimore, Md.  
 R. L. GALLEHER, Assistant General Freight Agent, " "  
 J. D. MARNERY, Assistant General Freight Agent, Cincinnati, O.  
 W. H. FOGLE, Chief of Tariff Bureau, Louisville, Ky.  
 A. M. SCHUBERT, Freight Tariff Agent, Baltimore, Md.  
 Cincinnati, O.

## COMMERCIAL DEVELOPMENT DEPARTMENT

H. O. HARTZELL, Manager, Baltimore, Md.

W. W. BAKER, Assistant to Manager, Baltimore, Md.  
 W. I. BISHOP, Industrial Agent, " "  
 W. E. HAMPTON, Industrial Agent, Pittsburgh, Pa.  
 J. M. McDERMOTT, Industrial Agent, Chicago, Ill.  
 G. W. ARNOLD, Industrial Agent, Cincinnati, O.  
 R. L. HAMME, Industrial Agent, St. Louis, Mo.

G. P. GRIMSLEY, Geological Engineer, Baltimore, Md.  
 O. K. OUIVEY, General Agricultural Agent, " "  
 PAUL O. HURLEY, Agricultural Agent, Cincinnati, O.  
 DAVID HUM, Jr., Industrial Survey Agent, Baltimore, Md.  
 W. McH. KEYSER, Assistant Industrial Survey Agent, " "

## DINING CAR AND COMMISSARY DEPARTMENT

E. V. BAUGH, Manager, Baltimore, Md.

## MAIL AND EXPRESS TRAFFIC DEPARTMENT

J. C. McCAHAN, Manager, Baltimore, Md.

### TRAFFIC REPRESENTATIVES

**Akron, O.**—  
 C. M. GOSNELL, Division Freight Agent  
 C. M. GRONINGER, District Freight Agent  
**Atlanta, Ga.**—  
 W. N. MITCHELL, Gen'l Southeastern Fr't Agent  
**Baltimore, Md.**—  
 H. H. TAGGART, Division Passenger Agent  
 J. L. HAYES, Division Freight Agent  
 EDWARD S. KING, District Freight Agent  
**Boston, Mass.**—  
 W. F. WILLIAMS, New England Passenger Rep.  
 J. W. KELLY, New England Fr't Representative  
**Charleston, W. Va.**—  
 Division Freight Agent  
**Cumberland, Md.**—  
 W. W. PICING, Division Passenger Agent  
 R. J. BEGGS, Division Freight Agent  
**Cleveland, O.**—  
 J. G. STRICKENBURG, Division Passenger Agent  
**Columbus, O.**—  
 B. E. WHITE, Division Passenger Agent  
 M. N. FREESE, District Freight Agent  
**Connellsville, Pa.**—  
 W. H. EATON, Division Freight Agent  
**Chillicothe, O.**—  
 E. T. STURTEVANT, Division Freight Agent  
**Cincinnati, O.**—  
 T. J. WEST, Division Passenger Agent  
 C. D. DOUGLASS, District Freight Agent  
**Chicago, Ill.**—  
 P. C. BENEDICT, Division Passenger Agent  
 HAROLD A. WILLIAMS, District Freight Agent  
**Dallas, Tex.**—  
 J. P. ROGERMAN, District Passenger Rep.  
 FLOYD G. STEBBINS, District Freight Rep.  
**Dayton, O.**—  
 T. E. HEILAND, Division Passenger Agent  
 H. E. WARBURTON, Division Freight Agent  
**Denver, Colo.**—  
 GUY GARDNER, District Fr't and Passenger Rep

**Detroit, Mich.**—  
 D. L. MOORMAN, Northern Passenger Agent  
 J. R. LEE, Commercial Freight Agent  
**Garrett, Md.**—  
 D. E. SULLIVAN, Division Freight Agent  
**Grafton, W. Va.**—  
 J. R. BROWN, Division Freight Agent  
**Huntington, W. Va.**—  
 R. E. BARNHART, District Freight Agent  
**Indianapolis, Ind.**—  
 L. E. STONE, District Freight Representative  
**Kansas City, Mo.**—  
 C. C. ELRICK, District Passenger Representative  
 C. W. BROWDER, District Freight Representative  
**Los Angeles, Cal.**—  
 G. V. DORFLINGER, District Fr't and Pass., Rep.  
**Louisville, Ky.**—  
 F. J. PARMALLEE, Division Passenger Agent  
 District Freight Agent  
**Memphis, Tenn.**—  
 L. C. SMITH, District Freight Representative  
**Milwaukee, Wis.**—  
 J. G. VAN NORSDAL, District Passenger Rep.  
 P. C. McCORMICK, District Fr't Representative  
**Minneapolis, Minn.**—  
 H. C. SCOFIELD, Northwestern Passenger Rep.  
 G. A. UPTON, Northwestern Freight Agent  
**Newark, O.**—  
 E. N. KENDALL, Division Freight Agent  
**New Orleans, La.**—  
 EDWARD MORGAN, District Fr't Representative  
**New York, N. Y.**—  
 J. B. SCOTT, General Eastern Passenger Agent  
 E. E. BAKEY, Division Passenger Agent  
 C. H. PUMPHREY, Division Freight Agent  
 S. S. PHENIX, Division Freight Agent  
 P. D. RIDDLE, Commercial Freight Agent  
 C. A. SCHULTZ, Commercial Freight Agent  
 District Freight Agent  
**Omaha, Neb.**—  
 L. G. REYNOLDS, District Fr't and Passenger Rep.

**Parkersburg, W. Va.**—  
 J. M. C. MARTIN, Traveling Passenger Agent  
 F. H. FOWLER, Division Freight Agent  
**Philadelphia, Pa.**—  
 R. C. HAASE, Division Passenger Agent  
 J. W. BABNEU, District Freight Agent  
 THOS. M. GALLAGHER, District Freight Agent  
**Pittsburgh, Pa.**—  
 IOS P. TAGGART, Ass't Gen'l Passenger Agent  
 W. E. MAGILL, Division Freight Agent  
 F. A. MARKLEY, District Freight Agent  
**Portsmouth, O.**—  
 Freight Representative  
**San Francisco, Cal.**—  
 S. M. TATE, District Passenger Representative  
 A. G. MARRINER, District Freight Representative  
**St. Louis, Mo.**—  
 E. D. AINSLIE, Ass't Gen'l Passenger Agent  
 W. F. BOLLMAN, District Freight Agent  
**Seattle, Wash.**—  
 FRANK L. MAHER, District Fr't and Pass., Rep.  
**Springfield, Ill.**—  
 W. P. TOWNSEND, Division Passenger Agent  
 E. A. FERGUSON, Division Freight Agent  
**Toledo, O.**—  
 G. F. SCHEER, Division Passenger Agent  
 E. C. LAW, District Freight Agent  
**Vincennes, Ind.**—  
 W. A. HARTMAN, Freight Representative  
**Washington, D. C.**—  
 W. V. SHIPLEY, Division Passenger Agent  
 F. L. MARSHALL, Jr., District Freight Agent  
**Washington, Ind.**—  
 J. W. HINDSAY, Division Freight Agent  
**Wheeling, W. Va.**—  
 C. T. PROUDFOOT, Division Passenger Agent  
 S. C. WILLIAMS, Division Freight Agent  
**Wilmington, Del.**—  
 H. A. MILLER, Traveling Passenger Agent  
 G. W. BUMPAS, District Freight Agent  
**Youngstown, O.**—  
 C. F. FARMER, Division Freight Agent









CONDENSED SCHEDULE OF THROUGH TRAINS WESTWARD

TABLE No. 1

NEW YORK, PHILADELPHIA, BALTIMORE AND WASHINGTON TO PITTSBURGH, CLEVELAND, DETROIT AND CHICAGO

NEW YORK, PHILADELPHIA, BALTIMORE AND WASHINGTON TO WHEELING, COLUMBUS, DETROIT AND CHICAGO

NEW YORK, PHILADELPHIA, BALTIMORE AND WASHINGTON TO CINCINNATI, LOUISVILLE AND ST. LOUIS

Main schedule table with columns for Miles, VIA AKRON, VIA NEWARK, VIA PARKERSBURG, and various train times (AM, PM) for stations from New York to Chicago.

Only one coupon is required between any two points on the Baltimore & Ohio System, including Newark, N. J., Jersey City, N. J., and New York City. Note: Nos. 11-15-11-Passengers for Trains Nos. 11 and 15 from stations east of Baltimore will use Train No. 511 to Washington...

THROUGH CAR SERVICE MEALS IN DINING CARS-A LA CARTE AND TABLE D'HOTE

NEW YORK-CINCINNATI-ST. LOUIS LIMITED. TRAIN No. 1. DAILY. Sleeping Cars... New York to St. Louis-Drawing-room, Washington to Cincinnati-Drawing-room...

NEW YORK-CHICAGO SPECIAL. TRAIN No. 7. DAILY. Sleeping Cars... New York to Chicago-Drawing-room, Washington to Chicago-Compartments and Drawing-room...

TRAIN No. 11. DAILY. Sleeping Cars... Cumberland-Cincinnati-Drawing-room, Clarksburg to Charleston D.R. (On Train No. 77 from Parkersburg)...

NEW YORK-CINCINNATI-ST. LOUIS EXPRESS. TRAIN No. 3. DAILY. Sleeping Cars... New York to St. Louis-Drawing-room, Washington to St. Louis-Drawing-room...

NOTE-Will not run into Pittsburgh. Passengers for Pittsburgh change at Conneville to Train No. 67. Coach passengers from No. 7 en route to Cleveland will transfer from Akron Union Station to Howard Street Station, taking train No. 41, leaving 6:45 a.m.

MIDDLE WEST EXPRESS. TRAIN No. 15. DAILY. Sleeping Cars... Baltimore to Chicago-Drawing-room, Pittsburgh to Detroit-Drawing-room...

NEW YORK-CHICAGO LIMITED. TRAIN No. 5. DAILY. Sleeping Cars... New York to Chicago-Drawing-room, Washington to Chicago-Compartments and D.R. Philadelphia to Detroit-Drawing-room...

PITTSBURGH AND CHICAGO EXPRESS. TRAIN No. 9. DAILY. Club Cars... New York to Washington, Sleeping Cars... New York to Chicago-Drawing-room...

PITTSBURGH EXPRESS. TRAIN No. 17. DAILY. Sleeping Cars... Philadelphia to Pittsburgh-16 Section, Philadelphia to Cumberland-Drawing-room...

MIDNIGHT EXPRESS. TRAIN No. 23. Sleeping Cars... Cincinnati to St. Louis-16 Section, Cincinnati to Louisville-Drawing-room...

CHICAGO NIGHT EXPRESS. TRAINS Nos. 45-15. DAILY. Sleeping Car... Wheeling to Chicago-Drawing-room, Parlor Dining Car... Wheeling to Newark...

Light-face figures A. M. time. E. T. Eastern Time C. T. Central Time. \* Daily. † Daily except Sunday. ‡ Sunday only. a Stops on signal to discharge passengers from stations east of Wheeling...

CONDENSED SCHEDULE OF THROUGH TRAINS EASTWARD

TABLE No. 2

CHICAGO, DETROIT, CLEVELAND AND PITTSBURGH TO WASHINGTON, BALTIMORE, PHILADELPHIA AND NEW YORK

CHICAGO, DETROIT, COLUMBUS AND WHEELING TO WASHINGTON, BALTIMORE, PHILADELPHIA AND NEW YORK

ST. LOUIS, LOUISVILLE AND CINCINNATI TO WASHINGTON, BALTIMORE, PHILADELPHIA AND NEW YORK

Main schedule table with columns for Miles, VIA PITTSBURGH, VIA NEWARK, VIA PARKERSBURG, and VIA CINCINNATI. Includes train numbers, departure/arrival times, and station names.

Only one Coupon is required between any two points on the Baltimore & Ohio System, including Newark, N. J., Jersey City, N. J., and New York City.

THROUGH CAR SERVICE MEALS IN DINING CARS—A LA CARTE AND TABLE D'HOTE

Table detailing dining car services for various train routes, including St. Louis-Cincinnati-New York Limited, Chicago-Washington-New York Special, and others.

Light-face figures A. M. time. E. T. Eastern time. Black-face figures P. M. time. C. T. Central time. Includes notes on signal to discharge passengers and other operational details.





























PARKERSBURG, ATHENS, CHILLICOTHE, AND GREENFIELD TO CINCINNATI

TABLE No. 35 WESTWARD

Table with columns for Miles, Stations (September 24, 1922), and arrival/departure times for various stations including Parkersburg, Athens, Chillicothe, Greenfield, and Cincinnati, Ohio.

CINCINNATI TO GREENFIELD, CHILLICOTHE, ATHENS AND PARKERSBURG

TABLE No. 36 EASTWARD

Table with columns for Miles, Stations (September 24, 1922), and arrival/departure times for various stations including Cincinnati, Ohio, Chillicothe, Athens, Greenfield, and Parkersburg.

Through Car service, see Tables Nos. 1 and 2. Light-face figures A. M. time. Black-face figures P. M. time. Stops on signal to receive and discharge passengers from Washington, D. C., and east. Stops on signal to discharge passengers from stations east of Loveland. Stops on signal to receive passengers from Baltimore and Ohio (C. I. & W.) or Southern Railroad Lines. Stops on signal daily to discharge passengers from Blanchester and stations east. Stops on signal to receive passengers from Washington, D. C., and stations east. Stops on signal on Sundays only. Stops on signal to receive and discharge passengers west of Cincinnati and stops on signal Sundays to receive and discharge passengers. Stops on signal to discharge passengers from stations east of Midland City. Stops on signal to discharge passengers from Marietta, Parkersburg and stations east. Stops on signal to discharge passengers from stations west of Midland City.



CINCINNATI, SEYMOUR, WASHINGTON, VINCENNES AND FLORA TO ST. LOUIS

TABLE No. 37

WESTWARD

Table with 12 columns (Miles, Stations, 67, 57, 1, 65, 55, 59, 53, 3, 23, 1) and rows of station names and times. Includes stations like Cincinnati, Ohio, Saylor Park, and St. Louis, Mo.

Light-face figures A. M. time. Through Car service, see Table No. 1. Black-face figures P. M. time. Daily. Daily except Sunday. Sunday only. Stops to discharge passengers from Cincinnati. Stops on signal to receive passengers for St. Louis and beyond. Stops on signal to discharge passengers. Stops on signal to discharge passengers from Cincinnati and east and receive passengers for St. Louis and beyond. Stops on signal to receive passengers for East St. Louis and beyond. Stops on signal Sunday only to receive or discharge passengers. Stops on signal Sundays only to discharge passengers from Cincinnati. Stops on signal at Coal Chute Breeze to receive passengers for East St. Louis and beyond. No. 37 will make stops on signal at stations between Cincinnati and Dearborn for passengers to stations west of Dearborn. No. 57 will stop on signal at Storrs to receive passengers from Ohio division train No. 1.

ST. LOUIS TO FLORA, VINCENNES, WASHINGTON, SEYMOUR AND CINCINNATI

TABLE No. 38

EASTWARD

Table with 12 columns (Miles, Stations, 68, 24, 2, 12, 60, 66, 64, 62, 768 Sun. only) and rows of station names and times. Includes stations like St. Louis, Mo., East St. Louis, Ill., and Cincinnati, Ohio.

Light-face figures A. M. time. Through Car service, see Table No. 2. Black-face figures P. M. time. Daily. Daily except Sunday. Sunday only. Stops to discharge passengers from stations on Louisville Sub-division, not including North Vernon. Stops on signal to receive passengers from Cincinnati and beyond. Stops on signal to discharge passengers from East St. Louis and beyond. Stops on signal Sunday to receive passengers for Cincinnati. Stops on signal to receive or discharge passengers. Stops on signal to discharge passengers from St. Louis and west and receive passengers for stations east of Vincennes where No. 24 is scheduled to stop. Stops to discharge passengers from St. Louis and beyond or from Springfield and beyond and receive passengers for Cincinnati or Louisville and beyond. Stops on signal Sunday only to receive or discharge passengers. Note--No. 24 stops at Bridgeport on signal (12.30 p.m.), when running in advance of No. 68 for passengers to Cincinnati and beyond. Nos. 60 and 63 will make stops on signal at stations between Dearborn and Cincinnati for passengers from stations west of Dearborn.

















**TABLE No. 71 PITTSBURGH, McKEESPORT, VERSAILLES, WEST NEWTON TO CONNELLSVILLE**

Miles	STATIONS September 24, 1922		STATIONS April 30, 1922	
	AM	PM	AM	PM
0.0	Lv Pittsburgh, Pa. (Balto. & Ohio Station)	Ar	Lv Confluence, Pa.	Ar
3.0	Lv Pittsburgh, Pa. (Balto. & Ohio Station)	Ar	Lv Somerfield	Ar
4.0	Lv Glenwood	Ar	Lv Watson, Pa.	Ar
4.9	Lv Rankin	Ar	Lv Selbysport, Md.	Ar
8.9	Lv Braddock	Ar	Lv Friendsville	Ar
10.8	Lv Bessemer	Ar	Lv Kendall, Md.	Ar
14.8	Lv McKeesport	Ar		
17.8	Lv West Newton	Ar		
33.1	Lv West Newton	Ar		
57.8	Ar Connelville, Pa.	AM		

**TABLE No. 72 CONNELLSVILLE, WEST NEWTON, VERSAILLES, McKEESPORT TO PITTSBURGH**

Miles	STATIONS September 24, 1922		STATIONS April 30, 1922	
	AM	PM	AM	PM
0.0	Lv Connelville, Pa.	Ar	Lv Confluence, Pa.	Ar
4.0	Lv West Newton	Ar	Lv Somerfield	Ar
4.1	Lv Versailles, Pa.	Ar	Lv Watson, Pa.	Ar
43.0	Lv McKeesport	Ar	Lv Selbysport, Md.	Ar
47.0	Lv Bessemer	Ar	Lv Friendsville	Ar
48.0	Lv Rankin	Ar	Lv Kendall, Md.	Ar
52.1	Lv Glenwood	Ar		
53.9	Lv Hazelwood	Ar		
57.8	Ar Pittsburgh, Pa. (Balto. & Ohio Station)	AM		

\* Daily. † Daily except Sunday. ‡ Stops to discharge passengers from points west of Pittsburgh. § Stops to discharge passengers from stations east of Cumberland. ¶ Stops on signal to receive or discharge passengers. Light-face figures A. M. time. Black-face figures P. M. time. b Flag Stop Saturday only. d Stops to discharge passengers.

**BETWEEN TABLE No. 70 CONFLUENCE AND KENDALL**

Miles	STATIONS April 30, 1922	
	AM	PM
11.00	Lv Confluence, Pa.	Ar
11.50	Lv Somerfield	Ar
12.5	Lv Watson, Pa.	Ar
15.5	Lv Selbysport, Md.	Ar
17.8	Lv Friendsville	Ar
12.40	Ar Kendall, Md.	PM

**BETWEEN YOUNGSTOWN, NILES, WARREN AND PAINESVILLE**

Miles	STATIONS April 30, 1922	
	AM	PM
10.30	Lv Youngstown, Ohio	Ar
10.41	Lv Girard	Lv
10.53	Lv Niles	Lv
11.00	Lv De Forest Junction	Lv
11.15	Lv North Warren	Lv
11.24	Lv State Road	Lv
11.30	Lv Stroups	Lv
11.34	Lv Painesville, Ohio	Lv
11.50	Lv West Farmington	Lv
11.56	Lv Bundysburg	Lv
12.09	Lv Middlefield	Lv
12.16	Lv Burton	Lv
12.26	Lv East Clarion	Lv
12.31	Lv Centre Road	Lv
12.41	Lv Chardon	Lv
12.48	Lv Clarks	Lv
12.54	Lv Concord	Lv
1.10	Ar Painesville, Ohio	Lv

**BETWEEN LORE CITY AND CUMBERLAND**

Miles	STATIONS April 30, 1922	
	AM	PM
3.40	Lv Lore City, Ohio	Ar
3.45	Lv Stone Siding	Lv
3.51	Lv Senecaville	Lv
4.02	Lv Buffalo	Lv
4.08	Lv C. & M. Crossing	Lv
4.14	Lv Blue Bell	Lv
4.30	Ar Cumberland, Ohio	Lv

All trains will stop on signal at Opperman, Yoker's Crossing, Rigby and Goodyear Mine.

**BETWEEN NEWARK, SOMERSET AND SHAWNEE**

Miles	STATIONS April 30, 1922	
	AM	PM
9.40	Lv Newark, Ohio	Ar
9.49	Lv Locust Grove	Lv
9.55	Lv National Road	Lv
10.02	Lv Avondale Park	Lv
10.08	Lv Thornville	Lv
10.15	Lv Walsler	Lv
10.17	Lv Vest's	Lv
10.19	Lv Glenford	Lv
10.30	Lv Chalfant	Lv
10.45	Lv Somerset	Lv
10.51	Lv Wellan	Lv
10.55	Lv McElroy's	Lv
10.59	Lv Gobles	Lv
11.07	Lv Junction City	Lv
11.16	Lv Bristol	Lv
11.20	Lv Dixie	Lv
11.24	Lv McCuneville	Lv
11.35	Ar Shawnee, Ohio	Lv

Nos. 37 and 64 will stop on signal at Green's Crossing and Central Silica Sand Spur.

**BETWEEN WHEELING, BELLAIRE AND ST. CLAIRSVILLE**

Miles	STATIONS April 30, 1922	
	AM	PM
4.00	Lv Wheeling, W. Va.	Ar
4.20	Lv Benwood Junction	Lv
4.25	Lv Bellaire, Ohio	Lv
4.45	Ar Neff	Lv
5.00	Lv Neff	Ar
5.05	Lv North Neff	Lv
5.09	Lv Echo	Lv
5.16	Lv Claremont	Lv
5.35	Ar St. Clairsville, Ohio	Lv

Light-face figures A. M. time. Black-face figures P. M. time. \* Daily. † Daily except Sunday. ‡ Stops on signal to receive or discharge passengers. § Stops on signal week days for passengers from St. Clairsville Sub-division.













## General Information

The Baltimore and Ohio Time-Tables shown herein give the time at which trains may be expected to arrive at and depart from the stations named; however, their arrival and departure at the time stated cannot be guaranteed. The Company cannot hold itself responsible for delays or consequences arising therefrom. Schedules are subject to change without notice.

**Stop-over privilege** for a period not exceeding ten days (exclusive of day ticket is deposited) is accorded at each of the points shown below on first-class one-way, and thirty day round-trip tickets upon notice to conductor and deposit of ticket with station ticket agent immediately upon arrival.

Akron, Ohio.	Postoria, Ohio.	Pittsburgh, Pa.
Baltimore, Md.	Hagerstown, Md.	③St. Louis, Mo.
Canton, Ohio.	Harpers Ferry, W. Va.	Sandusky, Ohio.
①Chicago, Ill.	②Louisville, Ky.	①Terra Alta, W. Va.
②Cincinnati, Ohio.	Lima, Ohio.	Toledo, Ohio.
Cleveland, Ohio.	Mansfield, Ohio.	Warren, Ohio.
Columbus, Ohio.	③Mitchell, Ind.	Washington, D. C.
Cumberland, Md.	①Mt. Lake Park, Md.	②Wayne Junction, Pa.
Dayton, Ohio.	②New York, N. Y.	Wheeling, W. Va.
①Deer Park, Md.	②Oakland, Md.	Wilmington, Del.
Detroit, Mich.	Philadelphia, Pa.	Youngstown, Ohio.

①Stop-over is accorded at these points only during period from May 15th to October 31st.

②When stop-over is made at this point, no further stop-over will be accorded on the same ticket at Reading Terminal, or 24th and Chestnut Streets Station, Philadelphia.

③For French Lick Springs and West Baden, Ind.

④Stop-over is accorded at these points on Eastbound tickets only.

⑤Stop-over at Louisville accorded on Northbound tickets only.

⑥Stop-over accorded at Cincinnati, except on Southbound tickets.

Stop-over is accorded on **Convention tickets** at points and under conditions as shown above, except that no stop-over is permitted beyond final return limit of such tickets.

Stop-over is accorded **at all points** on Baltimore and Ohio system on **Summer Tourist, All Year Tourist, and Winter Tourist tickets**, within final limit, upon notice to conductor and without deposit of ticket.

Passengers will avoid payment of extra charge by buying tickets previous to boarding trains.

**Children** under 5 years of age free, when accompanied by parent or guardian; 5 years of age and under 12, one-half fare; 12 years of age or over, full fare.

**Adjustment of Fares:** Should any misunderstanding arise with conductors or agents, passengers should pay the fare required, take receipt and communicate with General Passenger Agent, Baltimore & Ohio Railroad, at Baltimore, Md., Cincinnati, Ohio, or Chicago, Ill.

**Redemption of Tickets:** **Unused tickets** will be redeemed by the selling agent within thirty days from date of sale, or at any time by forwarding to General Passenger Agent direct, or through any of our ticket agents. **Partly Used Tickets**—The unused portions of partly used tickets will be redeemed by forwarding to General Passenger Agent direct, or through any of our ticket agents.

**Baggage** not exceeding 250 pounds in weight per single piece, or 72 inches in greatest dimension, or single shipment not exceeding \$2500.00 in value, will be checked. Free allowances subject to tariff stipulations as to contents, weight, value and size.

**Baggage Liability Limited:** Excess value must be declared and paid for at time of checking.

**Bicycles** (not motorcycles), **Baby Carriages, Dogs and Guns** are transported in baggage cars subject to tariff regulations.

**Lost Articles:** Inquiry should be made of J. P. Dugan, General Baggage and Milk Agent, Baltimore & Ohio Railroad, Baltimore, Md.

**No Responsibility** can be assumed for unchecked articles left in stations or cars.

**Only one coupon is required between any two points on the Baltimore & Ohio System, including Newark, N. J., Jersey City, N. J., and New York City.**

## BALTIMORE AND OHIO

### TICKET OFFICES

#### PRINCIPAL CITIES

AKRON, OHIO.....	No. 228 East Market St.
ANNAPOLIS, MD.....	No. 54 Maryland Ave.
BALTIMORE, MD.....	Baltimore and Charles Sts.
BROOKLYN, N. Y.....	No. 336 Fulton St.
CHICAGO, ILL.....	No. 161 West Jackson Boulevard (Insurance Exchange Building).
CINCINNATI, OHIO.....	6th and Main Sts. (Gwynne Building).
CLEVELAND, OHIO.....	No. 1004 Prospect St.
COLUMBUS, OHIO.....	No. 16 North Third Street.
DAYTON, OHIO.....	42 West Second St.
DETROIT, MICH.....	No. 1243 Griswold St. (Farwell Building).
LOUISVILLE, KY.....	Corner 4th and Market Sts.
NEWARK, N. J.....	Clinton and Beaver Sts. Meeker Avenue. (L. V. Station)
NEW YORK, N. Y.....	No. 64 Broadway, at Rector St. No. 57 Chambers St., near Broadway. No. 114 West 42d St., between Broadway and 6th Ave. No. 31 West 32d St., near Broadway.
PHILADELPHIA, PA.....	No. 1337 Walnut St.
PITTSBURGH, PA.....	Union Arcade Building, Oliver Ave.
ST. LOUIS, MO.....	No. 326 N. Broadway (Boatmen's Bank Building).
TOLEDO, OHIO.....	No. 211 Superior St.
WASHINGTON, D. C.....	13th and F Sts., N. W.
WILMINGTON, DEL.....	Delaware Trust Building, No. 9 East Ninth St.

### PASSENGER TERMINALS

#### PRINCIPAL CITIES

AKRON, OHIO.....	Union Station.
BALTIMORE, MD.....	Camden Station—Camden, Eutaw and Howard Sts. Mt. Royal Station—Mt. Royal Ave. and Cathedral St.
CHICAGO, ILL.....	Grand Central Station, Harrison and South Wells Sts.
CINCINNATI, OHIO.....	5th and Baymiller (Toledo Division Local trains). Central Union Station, 3d and Central Ave. (all other trains).
CLEVELAND, OHIO.....	Baltimore and Ohio Station, Columbus Road.
COLUMBUS, OHIO.....	Union Station, North High St.
DAYTON, OHIO.....	Union Station, 6th St., between Ludlow and Perry.
DETROIT, MICH.....	Fort St. Union Station, Fort and 3d Sts.
LOUISVILLE, KY.....	7th and Water Sts.
NEW YORK CITY, N. Y.....	Pennsylvania Station, 7th Ave. and 32d St. Hudson Terminal, Cortlandt and Church Sts.
PHILADELPHIA, PA.....	Baltimore and Ohio Station, 24th and Chestnut Sts.
PITTSBURGH, PA.....	Baltimore and Ohio Station, Smithfield and Water Sts.
SPRINGFIELD, ILL.....	5th and Madison Sts.
ST. LOUIS, MO.....	Union Station, 18th, 20th and Market Sts.
TOLEDO, OHIO.....	Union Passenger Station, Emerald and Knapp Streets.
WASHINGTON, D. C.....	Union Station, Massachusetts and Delaware Aves.



## PASSENGER AND FREIGHT SOLICITING REPRESENTATIVES

AKRON, OHIO.....C. M. Gosnell, Division Freight Agent, Hermes Building, Telephone Main 465.

ATLANTA, GA.....W. N. Mitchell, General Southeastern Freight Agent, 214 Palmer Building, Marietta and Forsythe Sts. Telephone Walnut 3492.

BALTIMORE, MD.....H. H. Taggart, Division Passenger Agent, Room 100 Baltimore & Ohio Building. Charles and Baltimore Streets, Telephone Plaza 0400, Branch 134.  
J. L. Hayes, Division Freight Agent, Room 10 Camden Station, Camden and Eutaw Streets, Telephone Plaza 0400, Branch 389.

BOSTON, MASS.....W. F. Williams, New England Passenger Representative, Room 316 Old South Building, 294 Washington Street, Telephone Main 4313.  
J. W. Kelly, New England Freight Representative, Room 316 Old South Building, 294 Washington Street, Telephone Main 4313.

CHARLESTON, W. VA.....Division Freight Agent, 1103 Kanawha Bank Building, Telephone Cap. 3607.

CHICAGO, ILL.....P. C. Benedict, Division Passenger Agent, Room 714, 112 West Adams Street, Telephone Wabash 3242.  
Harold A. Williams, District Freight Agent, Room 712, 112 West Adams Street, Telephone Wabash 3242.

CHILLICOTHE, OHIO.....F. T. Sturtevant, Division Freight Agent, Baltimore and Ohio Station, Telephone 724.

CINCINNATI, OHIO.....T. J. West, Division Passenger Agent, 46 Carew Building, Fifth and Vine Streets, Telephone Main 2900.  
C. D. Douglass, District Freight Agent, Room 82 Carew Building, Fifth and Vine Streets, Telephone Main 2900.

CLEVELAND, OHIO.....J. G. Strickenburg, Division Passenger Agent, 809 Park Building, Telephone Main 6720, Branch 9.

COLUMBUS, OHIO.....B. E. White, Division Passenger Agent, Rowlands Building, 16 North Third Street, Telephones Bell Main 784, Citizen 5615.  
M. N. Freese, District Fr't Agt., Room 705 Guarantee Title and Trust Building, Telephones Bell Main 87, Citizen 2087.

CONNELLSVILLE, PA.....W. H. Eaton, Division Freight Agent, 2nd National Bank Building, Telephone 36.

CUMBERLAND, MD.....W. W. Picking, Division Passenger Agent, Baltimore & Ohio Station, Telephone 3000.  
R. J. Beggs, Division Freight Agent, Baltimore and Ohio Station, Telephone 3000, Branches 112 ad 113.

DALLAS, TEXAS.....J. P. Rogerman, District Passenger Representative, 707-8 Southwestern Life Building, 1500 Main Street, Telephone X7981.  
Floyd G. Stebbins, District Freight Representative, 707-8 Southwestern Life Building, 1500 Main Street, Telephone X1721.

DAYTON, OHIO.....Theo. Heiland, Division Passenger Agent, No. 42 West Second Street, Telephone Main 446.  
H. E. Warburton, Division Fr't Agt., Third and Webster Streets, Telephones Bell East 339, Home 2446.

DENVER, COLO.....Guy Gardner, District Freight and Passenger Representative, 214 United States National Bank Building, 17th and Stout Sts., Telephone Champa 2349.

DETROIT, MICH.....D. L. Moorman, Northern Passenger Agent, 1819 Dime Savings Bank Building, Fort and Griswold Streets, Telephone Main 7240.  
J. R. Lee, Commercial Freight Agent, 1819 Dime Savings Bank Building, Fort and Griswold Streets, Telephones Main 6469.

GARRETT, IND.....D. E. Sullivan, Division Freight Agent, Baltimore and Ohio Station, Telephone 297.

GRAFTON, W.VA.....J. R. Brown, Division Freight Agent, Baltimore and Ohio Station, Telephone B. & O. Exchange 600, Stations 34 and 36.

HUNTINGTON, W. VA.....R. E. Barnhart, District Freight Agent, First National Bank Building, Telephone 216.

INDIANAPOLIS, IND.....L. E. Stone, District Freight Representative, 411 Board of Trade Building, S. E. Cor. Meridian and Ohio Streets, Telephone Lin. 2503.

KANSAS CITY, MO.....C. C. Elick, District Passenger Representative, 241 Railway Exchange Building, 7th and Walnut Streets, Telephone M2850.  
C. W. Browder, District Freight Representative, 240 Railway Exchange Building, 7th St. bet. Walnut and Grand Ave., Telephone M2850.

LOS ANGELES, CAL.....C. W. Dorfinger, District Freight and Passenger Representative, 509 Central Building, 6th and Main Sts., Telephone Main 1243.

LOUISVILLE, KY.....F. J. Parmalee, Division Passenger Agent, 601 Lincoln Bank Building, Telephones City 7838, Main 208.  
—District Freight Agent, 605 Lincoln Bank Building, Telephone City or Main 291.

MEMPHIS, TENN.....L. C. Smith, District Freight Representative, 416 Exchange Building, Madison Avenue and 2nd Street, Telephone M-5274.

MILWAUKEE, WIS.....J. G. Van Nordsdall, District Passenger Representative, P. C. McCormick, District Freight Representative, 536 First Wisconsin National Bank Building, East Water and Mason Sts., Telephone Broadway 151.

## PASSENGER AND FREIGHT SOLICITING REPRESENTATIVES—Concluded.

MINNEAPOLIS, MINN....H. C. Strohm, Northwestern Passenger Representative G. A. Upton, Northwestern Freight Agent, Room 620 Metropolitan Life Building, 3rd and 2nd Aves. Telephone Main 9528.

NEWARK, OHIO.....E. N. Kendall, Division Freight Agent, Baltimore and Ohio Station, Telephone 2093.

NEW ORLEANS, LA.....Edward Morgan, District Freight Representative, 809 Whitney-Central National Bank Building, Gravier and St. Charles Streets, Telephone Main 552.

NEW YORK, N. Y.....J. B. Scott, General Eastern Passenger Agent, 608 Wilson Building, 1270 Broadway, Telephone Pennsylvania 0472.  
C. H. Humphrey and P. S. Phenix, Division Freight Agents, 295 Broadway, Telephone Worth 4740.

OMAHA, NEB.....L. G. Reynolds, District Freight and Passenger Representative, 807 Woodmen of the World Building, 14th and Farnam Sts., Telephone Atlantic 2490.

PARKERSBURG, W. VA.....J. M. C. Martin, Traveling Passenger Agent, Baltimore & Ohio Main Line Station, Telephone 2176.  
F. H. Fowler, Division Freight Agent, Baltimore & Ohio Ann Street Station, Telephone 9.

PHILADELPHIA, PA.....R. C. Haase, Division Passenger Agent, 1337 Walnut St. Telephones Locust 1425, Walnut 3602, Race 5144.  
J. W. Babneu and Thos. M. Gallagher, District Freight Agents, Wildener Building, Telephone Locust 4008.

PITTSBURGH, PA.....J. P. Taggart, Assistant General Passenger Agent, 639 Union Arcade Building, Oliver Avenue, Telephone Court 3220.  
W. E. Magill, Division Freight Agent, Baltimore & Ohio Station, Smithfield and Water Streets, Telephone Court 3220.

PORTSMOUTH, OHIO....D. L. Ogg, Freight Representative, Telephone M127.

SAN FRANCISCO, CAL....S. M. Tate, District Passenger Representative, 382 Monadnock Building, Telephone Sutter 3180.  
A. G. Marriner, District Freight Representative, 378, 382 and 398 Monadnock Building, Telephone Sutter 3180.

ST. LOUIS, MO.....E. D. Ainslie, Assistant General Passenger Agent, 434 Boatmen's Bank Building, Telephone Main 5320.  
W. F. Bollman, District Freight Agent, 723 Pierce Building, Telephone 5320.

SEATTLE, WASH.....Frank L. Maher, District Freight and Passenger Representative, 336-7 Henry Building, Tel. Elliott 3557.

SPRINGFIELD, ILL.....W. P. Townsend, Division Passenger Agent, E. A. Ferguson, Division Freight Agent, 828-834 Reich Building, Telephone Main 255.

TOLEDO, OHIO.....Geo. F. Scheer, Division Passenger Agent, 848 Ohio Building, Madison and Superior Streets, Telephone Adams 2800.  
E. C. Law, District Freight Agent, 849 Ohio Building Madison and Superior Streets, Telephone Adams 1877.

VINCENNES, IND.....W. A. Hartman, Freight Representative, Telephone M54-2.

WASHINGTON, D. C.....W. V. Shipley, Division Passenger Agent, 323 Homer Building, 13th and F Streets, N. W., Telephone Main 556.  
F. L. Marshall, Jr., District Freight Agent, Room 324 Homer Building, 13th and F Streets, N. W., Telephone Main 48.

WASHINGTON, IND.....J. W. Lindsay, Division Freight Agent, Baltimore and Ohio Station, Telephone 75.

WHEELING, W.VA.....C. J. Proudfoot, Division Passenger Agent, Baltimore & Ohio Station, Telephone 127.  
S. C. Williams, Division Freight Agent, Baltimore & Ohio Station, Telephone 2764.

WILMINGTON, DEL.....H. A. Miller, Traveling Passenger Agent, Delaware Trust Building, No. 9 East Ninth Street, Telephone 480.  
G. W. Bumpus, District Freight Agent, Delaware Trust Building, No. 9 East Ninth Street, Telephone 481.

YOUNGSTOWN, OHIO....C. F. Farmer, Division Freight Agent, Room 314 Home Savings & Loan Building, Federal and Chestnut Streets, Telephone M299.

### A Nation-Wide Unified Express Service

Is maintained by the American Railway Express Company, which operates on the Baltimore & Ohio Railroad and other principal railroads in the United States.

Express service stands for safe and rapid transportation of shipments, facilitated by a comprehensive system of through car routes and special express trains, an alert organization of trained expressmen and delivery and pick-up of business at important points.

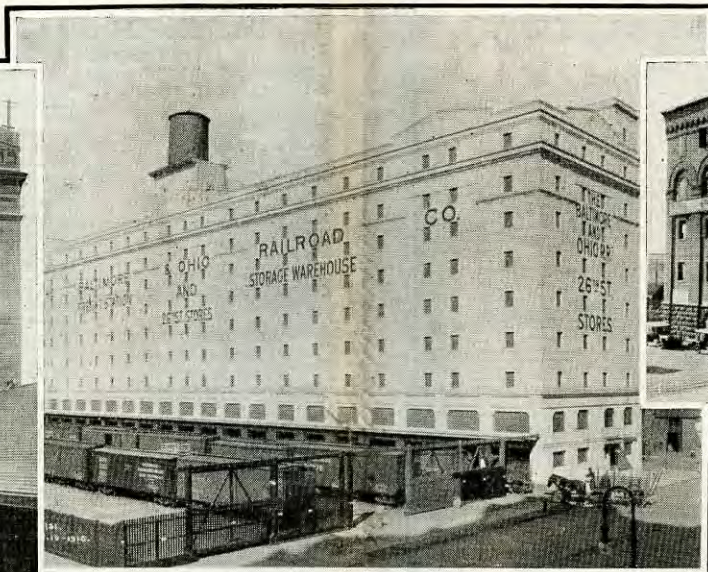
Your shipment by express is recorded and protected throughout its journey; you are given free insurance up to \$50 valuation.

These men and these facilities are constantly at your service.

The Baltimore & Ohio operates exclusive express trains between New York and Chicago and New York and St. Louis on fast schedules, thus assuring rapid handling of shipments.



The Camden warehouse  
of the Baltimore & Ohio in Baltimore



The Baltimore & Ohio Warehouse 26th Street Stores in New York



Baltimore & Ohio Warehouse  
in Cincinnati



## GET NEARER YOUR MARKET

Save Transportation Costs By Using

### Baltimore & Ohio Storage Warehouses

The carrying of stocks of staple commodities in warehouses at important consuming and distributing points, affords the means of quickly supplying distant markets.

It permits taking advantage of carload rates and carload movement to the distributing point, resulting in a saving on transportation costs and the reduction of loss and damage to a minimum.

To meet the demand for such facilities the Baltimore & Ohio Storage Warehouses have been established at principal cities here shown. These warehouses are all served by Baltimore & Ohio tracks. There is no cartage or other terminal expense either in or out of the warehouses on business moving over the Baltimore & Ohio.

Negotiable warehouse receipts for use as collateral, issued upon request.

Others are using this service, why not you?

For detailed information address:

NEW YORK  
Edwin Morton, Manager,  
S. W. Cor. 26th & 11th Avenue

PHILADELPHIA, PA.  
Ralph Earle, Vice-Pres. & Gen'l. Supt.  
Penna. Warehouse & Safe Deposit Co.

BALTIMORE, MD.  
James C. Brown, Manager,  
Camden Station

WASHINGTON, D. C.  
Edward Harban, Supt.

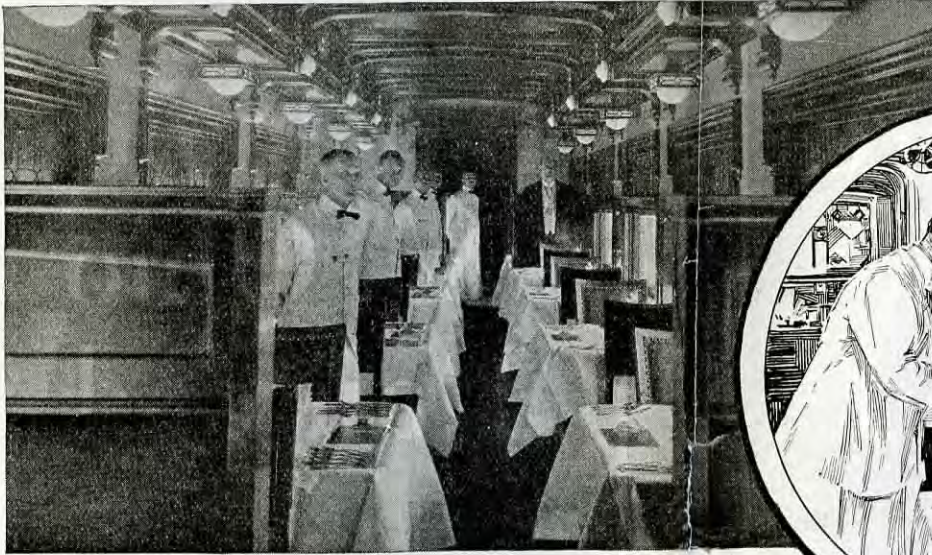
CINCINNATI, O.  
F. W. Berry, Manager,  
2nd & Smith Streets  
Harry Foster, Manager,  
518 W. 5th Street.

CLEVELAND, O.  
George Littell, Agent

FAIRPORT, O.  
G. W. Taylor, Manager,  
Painesville, Ohio

# Baltimore & Ohio Railroad

"Our Passengers are our Guests"



## Meals That Are A Treat, Service That Adds To Their Enjoyment

IT is the attention to little details that adds so much to the enjoyment of food on Baltimore & Ohio dining cars—the way a roast is basted, the way the gravy is made, the chef's own secret of bringing out the flavor.

The serving counts for so much, too—the bright silverware and the dainty china sharpen the appetite.

The territory served by the Baltimore & Ohio is noted for the excellence of its food products. Fresh vegetables from the truck gardens of Maryland's Eastern Shore, sea food from the nearby Chesapeake, fresh meats from the famous Chicago packing houses—from these and many other sources come provisions and delicacies to your table in the dining car. The food is prepared for you by chefs of exceptional ability and served by alert waiters under the constant supervision of courteous stewards.

A delightful table d'hote service—seven course dinner for \$1.25, a generous Commercial Traveler's meal at 75c., and special slips of today's suggestions of seasonable foods are some of the special features of Baltimore & Ohio service. A well-balanced a la carte service is available if you prefer.

We pride ourselves on the standard we have set for our dining car service. It is maintained for you—we invite you to enjoy it.

## A Typical Dinner Cooked In True Southern Style, Savory and Delicious

Soup, Philadelphia Clam Chowder  
Consomme, Hot or Cold  
Stuffed Mangoes Pimento Olives  
Boiled Chesapeake Bay Rock, Egg Sauce  
Potatoes, Hollandaise  
Lobster Newburg  
Apple Fritter, Glazed  
Half Fried Chicken, a la Maryland  
Roast Cochrane West Virginia Farm Ham  
Candied Sweet Potatoes Bantam Corn on Cob  
Lettuce and Tomato Salad, French Dressing  
Peach Roll (Baked on Car)  
Tutti Fruitti Ice Cream Roquefort Cheese  
Assorted Cake Bent's Crackers

(PRICE \$1.25)

# Baltimore & Ohio