

The Rocket Engine

2000 horse-power developed from two huge Electro-Motive 12 cylinder V-Type two cycle Diesel engines drive the Choctaw Rockets by means of 600 volt electric generators and traction

motors geared to the wheel axles. This tremendous power is controlled easily by simple levers and switches. High vision windows provide an open view of the road ahead. Their top speed is easily controlled by electro-pneumatic brakes and a system of safety devices under which the train is controlled more quickly than the heavier conventional trains.

Schedule of "Choctaw Rocket"

Memphis-Amarillo (approximate)

Train 51	Memphis-Amarillo (approximate)	Train 52
8:30 PM Lv	MEMPHIS	Ar 8:00 AM
10:53 PM Ar	LITTLE ROCK	Lv 5:25 AM
10:55 PM Lv	LITTLE ROCK	Ar 5:23 AM
1:42 AM Ar	BOONEVILLE	Lv 2:37 AM
1:44 AM Lv	BOONEVILLE	Ar 2:35 AM
6:07 AM Lv	SHAWNEE	Ar 10:15 PM
7:00 AM Ar	OKLAHOMA CITY	Lv 9:23 PM
7:05 AM Lv	OKLAHOMA CITY	Ar 9:20 PM
7:42 AM Ar	EL RENO	Lv 8:43 PM
7:44 AM Lv	EL RENO	Ar 8:41 PM
10:14 AM Lv	SAYRE	Ar 6:06 PM
1:05 PM Ar	AMARILLO	Lv 3:15 PM

THE CHOCTAW ROCKETS are NOT EXTRA FARE trains. Tickets sold at regular coach fares are honored in reclining seat chair cars. Passengers holding space in Pullman sleepers or Parlor cars must have transportation valid for the type of accommodations selected.

For reservations, tickets and information, consult your nearest Rock Island Agent or telephone or call at

MEMPHIS, Tenn.

70 Monroe St. Phone 8-5911

G. J. Cissel, District Passenger Agent
L. M. Hunt, City Passenger Agent
H. W. Buckley, City Ticket Agent

LITTLE ROCK, ARK.

Second & McLean Sts. Phones 7643, 6197-4-1593

F. W. Duttlinger, Division Passenger Agent
Thurman R. Penn, City Passenger Agent

OKLAHOMA CITY, OKLA.

407-8 Commerce Exchange Bldg. Phones 3-9552-3-4457

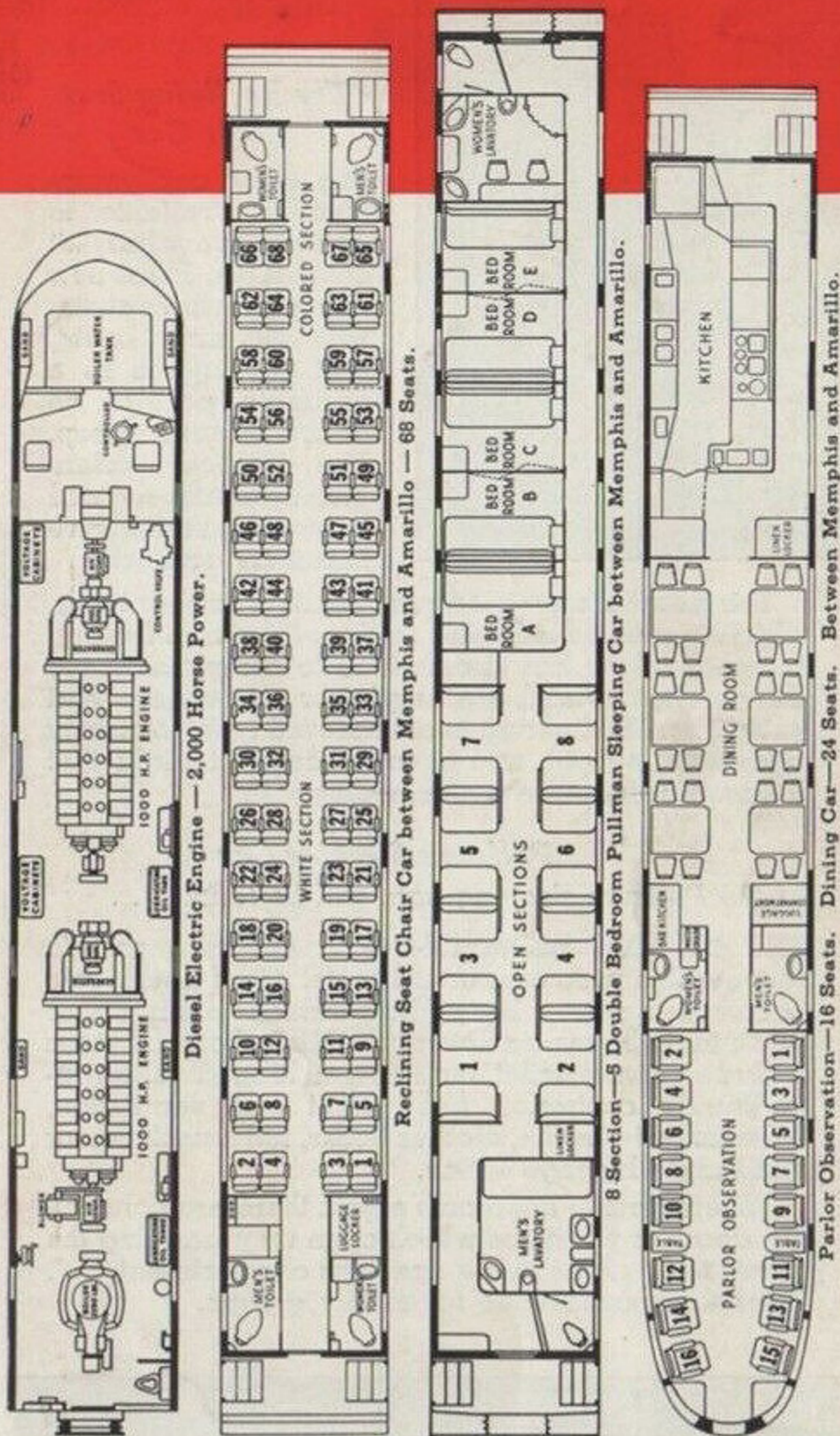
J. K. Gillette, Division Passenger Agent
E. T. Connor, City Ticket Agent

AMARILLO, TEX.

Rock Island Station Phones 5208-5209

H. W. Clutter, City Passenger and Ticket Agent

T. W. BOWDRY, General Passenger Agent, Fort Worth, Texas
P. W. JOHNSTON, General Passenger Agent, Kansas City, Mo.
A. D. MARTIN, Passenger Traffic Manager, Chicago, Ill.



DIAGRAMS OF POWER UNIT AND EQUIPMENT
CHOCTAW ROCKET

Diesel-powered electric engines, luxurious, deep-cushioned, reclining seat chair cars, latest type Pullman sleeping cars with double bedrooms and sectional accommodations. Delightfully appointed Diner and Parlor-Observation Car. No Extra Fare.

The CHOCTAW Rocket



Between
Memphis
Little Rock
Oklahoma City
and Amarillo



ROCK ISLAND LINES

THE ROUTE of the Choctaw Rocket is rich in history and in variety of landscape and industry. West from Memphis it bisects the fertile rice lands, orchards, and abundant truck gardening country of Arkansas. It continues through Oklahoma's cotton fields and myriad of oil derricks to the heart of the cattle country at Amarillo, Texas. . . . This section has shown by its rapid growth a continued importance in American economics.

The history of the construction of the railroad through this territory is filled with the struggles of early pioneers, dating from 1853, when the first railway charter was issued in Arkansas. . . . Today the fine, streamlined Choctaw Rocket speeds over this route formerly traversed only by wagon trains and herds of cattle.

The Choctaw Rockets...

latest additions to the Rock Island fleet of Rocket trains, have been built for speed, safety and comfort. They are roller bearing equipped and operate smoothly, on the fastest schedule between Memphis, Little Rock, Oklahoma City and Amarillo.

The two trains — each built of stainless steel, streamlined, and colorful, are Diesel powered. They afford the latest in modern train travel in reclining seat chair cars, double bedroom sleepers with sectional space, and a diner-parlor-observation car.

The decorative treatment of the interiors was planned to carry unity of color throughout all of the cars. The windows are of unusual width and equipped with shatter-proof glass. The cars are air-conditioned throughout assuring a constant change of clean, cool air at all times. The luxurious comfort, makes certain that your journey will be delightful and long to be remembered.



The Reclining Seat Chair Car

The chair car equipment is available to patrons traveling at coach fares. These new roomy cars have chairs with reclining backs, and adjustable to a desirable position to assure restful sleep. The cushions, scientifically contoured and luxuriously stuffed give maximum comfort.

The floors are covered with resilient rubber tiling, which is sound-deadening and provides firm footing. Luggage racks are streamlined to complement the interior beauty and are ample for all luggage and packages. The lighting is of improved type, to closely resemble daylight, and is so subdued at night that it does not interfere with sleeping.

The Pullman Sleeping Car

In the Pullman sleeping cars will be found . . .

THE DOUBLE BEDROOM — an enclosed private room with a wide comfortable sofa. At night this sofa becomes a roomy bed, above which is an upper berth that also makes down into a bed. Conveniences include private toilet facilities, a hinged table, individually controlled heat, light and ventilation, vacuum water bottle, clothes hooks, full length mirror and ample luggage space.

Where double bedrooms adjoin there are connecting doors or partitions which open up permitting the rooms to be made into a spacious compartment. . . . Ideal accommodations for family groups.

THE SECTION . . . combines upper and lower berths and may be reserved for one or two persons. In the former case it is called a single occupancy section, in the latter, double occupancy section and in either case the upper is raised to give full head room. The upper and lower berths can also be occupied as individual units of space.

THE LOWER BERTH . . . includes electric lights, adjustable shelf for luggage, hanger for clothes, and will accommodate one or two adults. The spring mattress is of the finest hair-type and two pillows are provided. In the daytime the passenger holding the lower berth is entitled to the seat facing forward.

THE UPPER BERTH . . . Pullman's most modest accommodation, includes a window, electric lights, ample space for luggage or clothing, hangers for clothes and an electric bell for summoning the porter. It may be occupied by one or two adults.

The Diner—Parlor Observation Car

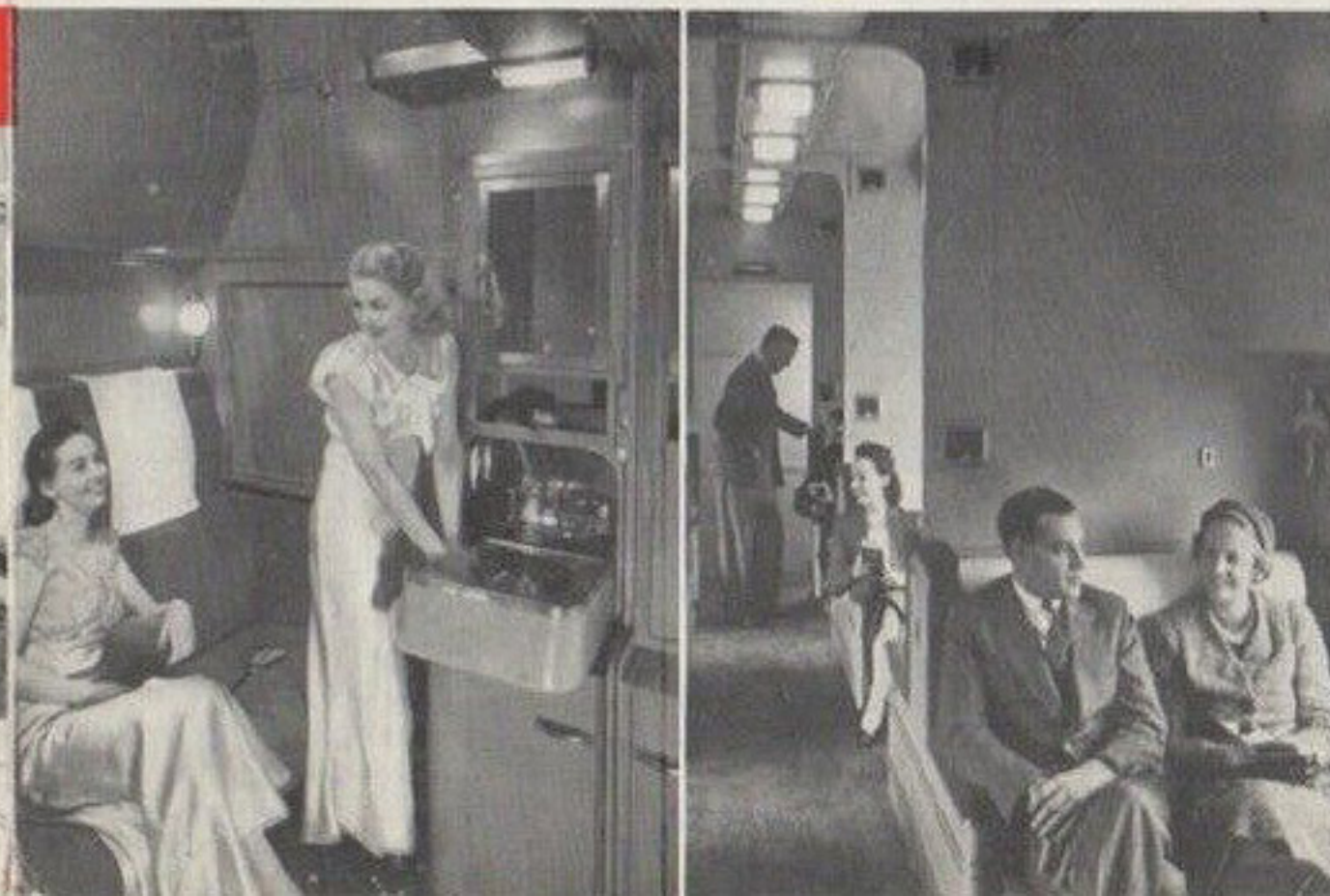
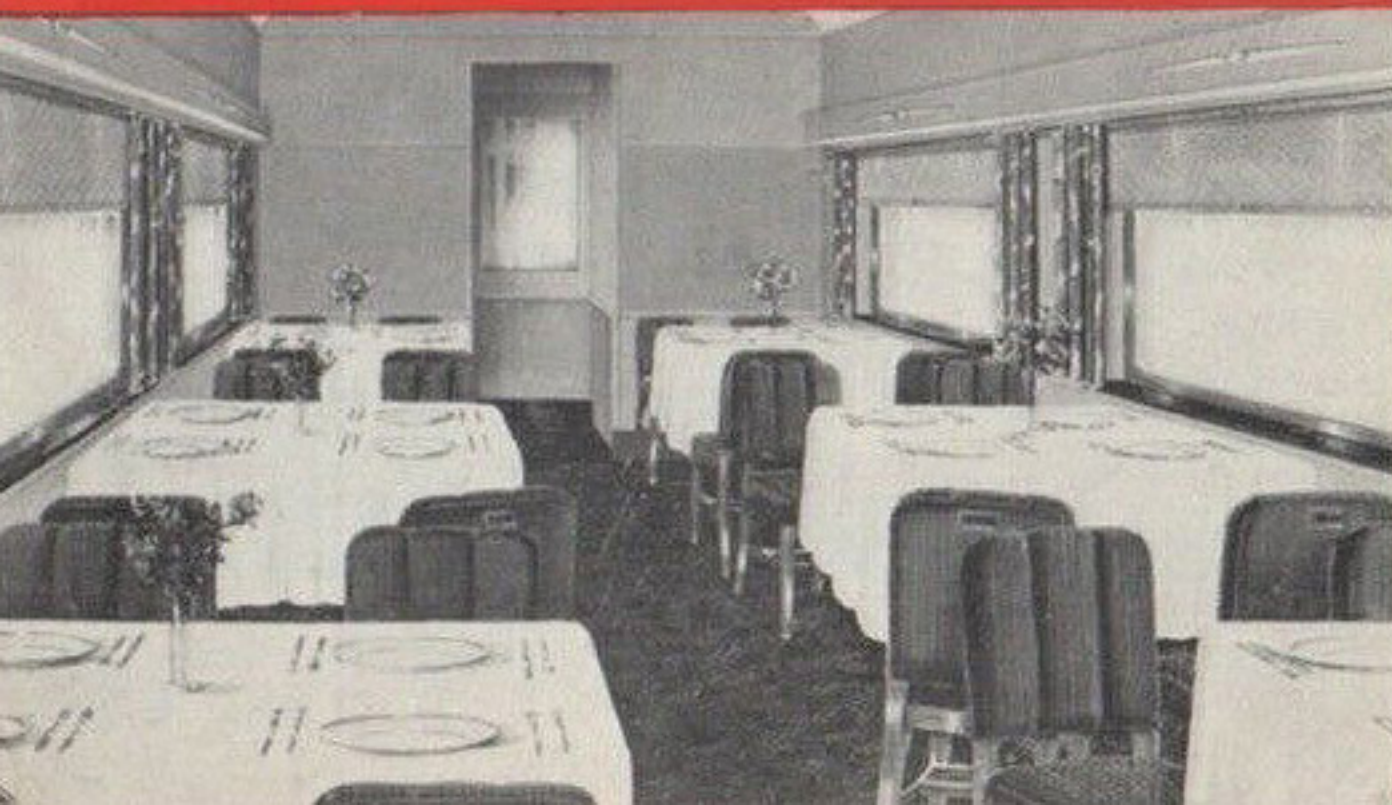
The Parlor Observation has sixteen inviting chairs, magazine library and radio. This section is reserved exclusively for patrons traveling on first-class tickets who hold seat ticket for the parlor car or have accommodations in the Pullman sleeping car.

The Dining Room . . . Merely being seated in its luxurious atmosphere is enough to whet your appetite. There are seating accommodations for twenty-four persons. The well selected table service is especially designed to make the best possible appearance.

Chefs and waiters have been carefully chosen, and are competent and courteous, ready to serve you silently and quickly the "Best Meals on Wheels". Menus are varied and wholesome, providing an excellent choice for the most jaded appetite.

The Dining Room

The Bedroom



The Section

The Parlor—Observation

