

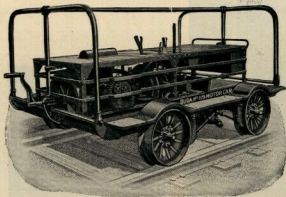
# BUDA

ESTABLISHED  
1881

MANUFACTURERS OF



Buda Rolled Steel Wheel



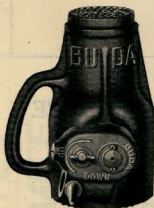
Buda No. 119 Motor Car



Buda All Steel Bumping Post



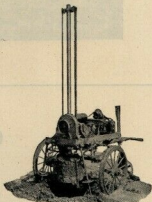
Buda-Clark Track Lines



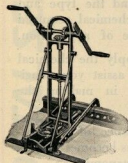
Buda 50-Ton Ball Bearing Journal Jack



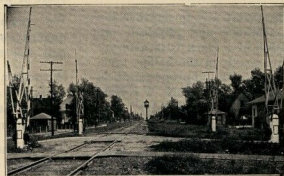
The New BUDA No. 419—truly a "center load" car. Ample power and strength, and as yet the easiest car to handle you may have used



Buda-Hubron Earth Drill



Paulus Hyduty Track Drill



Buda Crossing Gates



Buda-Wilson Drill with Liberty Clamp

Catalogue on request

## THE BUDA COMPANY

Railway Exchange  
CHICAGO

30 Church Street  
NEW YORK

HARVEY (Chicago) ILLINOIS

Railway Exchange  
ST. LOUIS  
LONDON

ATLANTA, GA.

664 Mission St.  
SAN FRANCISCO