

STAGE AND BOAT CONNECTIONS

To points in Oregon and Washington reached from stations on the Spokane, Portland and Seattle Ry. east of Portland and on Oregon Trunk Ry.

Destination	From	Conveyance	Days	Time	Free Bge.lbs.
Oregon:					
*Arlington	Roosevelt	Ferry	Daily	9 A.M. to 9 P.M.	Hand
Ashwood	Madras	Stage	Ex. Sun.	8:00 AM	Hand
Burns	Bend	Stage	Daily	8:00 PM	100
Camp Abbot	Bend	Stage	Daily	30 min. serv 4 AM - Mid't	100
Chiloquin	Bend	Stage	Daily	2:20 PM	100
Crucet	Bend	Stage	Daily	7:20 PM	100
Criterion	Maupin	Stage	Daily	2:20 PM	100
Ft. Klamath	Bend	Stage	Daily	10:55 AM	100
Fort Rook	Bend	Stage	Daily	4:10 PM	100
Grizzly	Bend	Stage	Ex. Sun.	2:20 PM	100
Hay Creek	Madras	Stage	Ex. Sun.	8:45 AM	100
Klamath Falls	Bend	Stage	Ex. Sun.	8:00 AM	100
Lakeview	Bend	Stage	Daily	2:20 PM	100
La Pine	Bend	Stage	Ex. Sun.	7:20 PM	100
Millican	Bend	Stage	Ex. Sun.	8:45 AM	100
Mitchell	Redmond	Stage	Daily	8:00 PM	100
Paisley	Bend	Stage	Sun., Tue., Thu., Sat.	2:05 PM	100
Prineville	Redmond	Stage	Ex. Sun.	8:45 AM	100
Riley	Bend	Stage	Daily	11:35 AM	100
Silver Lake	Bend	Stage	Daily	2:05 PM	100
Summer Lake	Bend	Stage	Daily	7:05 PM	100
*The Dalles	Northdalles	Ferry	Ex. Sun.	8:45 AM	100
Tygh Valley	Maupin	Stage	Ex. Sun.	8:45 AM	100
Wapinitia Jct.	Maupin	Stage	Continuous Service	4:50 PM	100
Warm Springs	Madras	Stage	Daily	10:40 AM	100
				4:55 PM	
				8:00 AM	
Washington:					
Amboy	Vancouver	Stage	Ex. Sun.	7:30 AM	Hand
			"	4:30 PM	
			Sun.	10:00 AM	
			"	7:00 PM	
Appleton	Lyle	Stage	Ex. Sun.	7:00 AM	Hand
Battle Ground	Vancouver	Stage	Daily	Frequent	Hand
Bickleton	Roosevelt	Stage	Daily	Meets 3 & 4	Hand
Brush Prairie	Vancouver	Stage	Daily	Frequent	Hand
Cheney	So. Cheney	Passengers	make own arrangement		s(1)
Gilmer	Bing-Wh Sal	Stage	Ex. Sun.	12:30 PM	Hand
Glenwood	Bing-Wh Sal	Stage	Ex. Sun.	1:00 PM	Hand
*Goldendale	Maryhill	Stage meets	No. 4 Daily		Hand
		Nos. 1 & 3 Daily	ily ex. Sun.		Trunks
					50c
Guler	Bing-Wh Sal	Stage	Ex. Sun.	12:30 PM	Hand
Hanford	Kennewick	Stage	Frequent		Hand
Hartland	Lyle	Stage	Tu.Th.Sat	1:30 PM	Hand
Husum	Bing-Wh Sal	Stage	Ex. Sun.	12:30 PM	Hand
LaCenter	Vancouver	Stage	Daily	See Note 1	Hand
Laurel	Bing-Wh Sal	Stage	Ex. Sun.	12:30 PM	Hand
Liberty Bond	Lyle	Stage	Ex. Sun.	7:00 AM	Hand
Longview	Rainier	Stage	Daily	AM PM	50
				8:20 2:20	
				10:20 4:20	
				12:20 6:20	
				7:40	
Ochards	Vancouver	Stage	Daily	Frequent	Hand
Richland	Kennewick	Stage	Daily	Frequent	Hand
St. Martin's Springs	Carson	Auto	Daily	Trains 3 & 4	Hand
Snowdon	Bing-Wh Sal	Stage	Ex. Sun.	8:00 AM	Hand
Trout Lake	Bing-Wh Sal	Stage	Ex. Sun.	12:30 PM	Hand
White Bluffs	Kennewick	Stage	Frequent		Hand
Yacolt	Vancouver	Stage	Ex. Sun.	7:30 AM	Hand
			"	4:30 PM	
			Sun.	10:00 AM	
			"	7:00 PM	

Note 1—hourly 7:36 A.M. to 6:36 P.M., incl., 9:36 P.M., 12:36 A.M.
 * Phone Goldendale 1642 for special service for connections not shown.
 © Phone Main 1271 Cheney for special service.
 * Suspend only in case of heavy ice in river.
 : 7:30 A.M. to 7:15 P.M.

The information shown above is prepared from the best data obtainable, but it is subject to change without notice and neither service nor rates are guaranteed.

JUNE 1, 1944

SUBJECT TO CHANGE WITHOUT NOTICE



Spokane, Portland & Seattle Ry. Oregon Trunk Ry.

TIME TABLES



Cape Horn, Columbia River, S. P. & S. Ry.

SPOKANE, PORTLAND AND SEATTLE RAILWAY SYSTEM



TRANSCONTINENTAL TRAIN SERVICE—BETWEEN PORTLAND, SPOKANE AND THE EAST

VIA GREAT NORTHERN RY.									
Eastbound, Read Down					Westbound, Read Up				
Daily No. 4	Daily No. 2	Daily No. 2	One Day Example	Miles	Spokane, Portland and Seattle Railway	Daily No. 1	Daily No. 1	Daily No. 5-3	
9.00	8.00	8.00	Su.	0	Lv. Portland, Union Station . Ar.	7.35	7.35	5.08	
9.30	8.30	8.30	"	10	Lv. Vancouver . Ar.	7.05	7.05	4.35	
12.43	11.05	11.05	Mo.	106	Lv. Wishram . Ar.	4.25	4.25	1.45	
4.00	1.50	1.50	"	231	Ar. Pasco . Ar.	1.50	1.50	10.42	
8.20	6.50	6.50	"	378	Ar. Spokane, N. P. Station . Lv.			7.00	
			"	380	Ar. Spokane, G. N. Station . Lv.	9.45	9.45		
Great Northern Ry.									
	No. 28	No. 2				No. 1	No. 27		
			Mo.	380	Lv. Spokane, G. N. Station . Ar.	9.30	6.20		
			"	455	Ar. Sand Point . Lv.		5.55		
			"	488	" Bonner's Ferry . Lv.	6.55	2.58		
			"	676	" Kalispell . Lv.	3.05	11.40		
			"	678	" Belton . Lv.		10.23		
			"	734	" Glacier Park . Lv.		8.40		
			"	806	" Shelby . Lv.	10.35	6.30		
			"	905	Lv. Great Falls . Ar.	7.00			
			Tu.	1128	Ar. Billings . Lv.	11.30			
			"	1064	Ar. Havre . Lv.	8.10	3.30		
			"	1340	" Glasgow . Lv.	4.30	12.15		
			"	1548	" Minot . Lv.	10.50	7.20		
			"	1573	" Grand Forks . Lv.	5.25	9.10		
			"	1838	" Fargo . Lv.	3.20	2.40		
			We.	1843	Ar. Superior . Lv.	9.45			
			"	1804	" Duluth . Lv.	9.30			
			Tu.	1804	Ar. Minneapolis (Hennepin Ave. Sta.) . Lv.	9.25	9.18		
			"	1814	Ar. St. Paul (Union Station) . Lv.	8.50	8.45		
Burlington Route									
						No. 49	No. 49		
			Tu.	1814	Lv. St. Paul (Union Station) . Ar.	8.30	8.30	10.30	
			We.	2245	Ar. Chicago (Union Station) . Lv.	11.15	11.15	4.00	
Burlington Route									
						No. 43			
			We.	1969	Ar. Lincoln . Lv.	11.59			
			We.	2024	Ar. Omaha . Lv.	9.30			
			"	2179	" Kansas City . Lv.	6.00			

m Stops to discharge passengers from Portland. q Daily except Monday.
 † Except Sunday.

EQUIPMENT

No. 2. Empire Builder—AIR CONDITIONED—(S.P. & S.-G.N.-C.B. & Q.)
 8 section buffet-lounge-observation-standard sleeping car, Portland to Spokane; 10 section observation-lounge-standard sleeping car, Spokane to Chicago; 8 section 1 drawing room, 2 compartment, standard sleeping car, Portland to Chicago; 16 section tourist sleeping car, Portland to Chicago; coaches, Portland to Spokane, Spokane to Chicago; dining car, Spokane to Chicago.

No. 2-28. Observation lounge car, with buffet, standard and latest type tourist sleeping car and coaches (all air conditioned), Portland to Spokane, and non-air conditioned coaches only, with light meal service, Spokane to St. Paul.

No. 4-4. Columbia River Express.—Air conditioned reserved seat coach, cafe, and non-air conditioned coach, Portland to Pasco. Air conditioned reserved seat coach and air conditioned coach via Northern Pacific Railway, Pasco to Spokane.

WESTBOUND

No. 1. Empire Builder—AIR CONDITIONED—(C.B. & Q.-G.N.-S.P. & S.)
 10 section observation-lounge-standard sleeping car, Chicago to Spokane; 8 section buffet lounge-observation-standard sleeping car, Spokane to Portland; 8 section, 1 drawing room, 2 compartment, standard sleeping car, Chicago to Portland; 16 section tourist sleeping car, Chicago to Portland; coach, Chicago to Spokane, Spokane to Portland; dining car, Chicago to Spokane, Wishram to Portland.

No. 27-1. Non-air conditioned coaches only, with light meal service, St. Paul to Spokane. Air-conditioned observation lounge car with buffet, and 3 standard sleeping car sections; 8 section, 2 compartment, 1 drawing room, standard sleeping car, latest type tourist sleeping car, and coaches, Spokane to Portland.

No. 5-3. Columbia River Express.—Air conditioned reserved seat coach cafe, and air conditioned coach, Spokane to Pasco via Northern Pacific Ry. Air conditioned reserved seat coach and non-air conditioned coach, Pasco to Portland via S. P. & S. Ry.

VIA NORTHERN PACIFIC RY.									
Eastbound, Read Down					Westbound, Read Up				
Daily No. 4	Daily No. 2	One Day Example	Miles	Spokane, Portland and Seattle Railway	Daily No. 1	Daily No. 1	Daily No. 5-3		
9.00	8.00	Su.	0	Lv. Portland, Union Station . Ar.	7.35	7.35	5.08		
9.30	8.30	"	10	Lv. Vancouver . Ar.	7.05	7.05	4.35		
12.43	11.05	Su.	106	Lv. Wishram . Ar.	4.25	4.25	1.45		
4.00	1.50	Mo.	231	Ar. Pasco . Ar.	1.50	1.50	10.42		
		"	378	Ar. Spokane, N. P. Station . Lv.			7.00		
Northern Pacific Ry.									
	No. 4	No. 2			No. 1	No. 3			
			Mo.	238	Lv. Pasco . Ar.	12.21	10.30	10.42	
			"	378	Ar. Spokane (N. P. Station) . Lv.	9.05	6.35	7.00	
Northern Pacific Ry.									
	No. 4	No. 2			No. 1	No. 3			
			Mo.	378	Lv. Spokane (N. P. Station) . Ar.	8.40	6.15		
			"	418	Ar. Athol (Farragut Naval Training Sta.) . Lv.	7.38	5.02		
			"	446	" Sand Point . Lv.	6.52	4.17		
			"	687	" Missoula . Lv.	3.00	11.10		
			"	759	" Helena . Lv.	11.15	7.05		
			"	761	" Butte . Lv.	12.05	7.40		
			"	857	" Bozeman . Lv.	8.50	3.53		
			"	883	" Livingston . Lv.	7.50	2.55		
			Tu.	937	Ar. Gardiner (Yel. Nat'l Pk.) . Lv.	11.30	11.30		
			"	998	Ar. Billings . Lv.	4.56	11.40		
			"	1137	" Miles City . Lv.	1.20	7.28		
			"	1216	" Glendive . Lv.	11.31	5.20		
			"	1330	" Dickinson . Lv.	9.02	2.23		
			"	1445	" Bismarck . Lv.	7.11	11.43		
			"	1539	" Jamestown . Lv.	6.03	8.49		
			"	1630	" Fargo . Lv.	2.50	5.55		
			Tu.	1886	Ar. Superior . Lv.	7.45	8.12		
			"	1890	" Duluth . Lv.	7.30	8.00		
			Tu.	1880	Ar. Minneapolis (Hennepin Ave. Sta.) . Lv.	9.10	11.05		
			"	1890	Ar. St. Paul (Union Station) . Lv.	8.35	10.15		
Burlington Route									
						No. 51	Zephr No. 21		
			Tu.	1890	Lv. St. Paul (Union Station) . Ar.	8.00	10.30	3.15	
			We.	2321	Ar. Chicago (Union Station) . Lv.	10.45	4.00	9.00	
Burlington Route									
						No. 43			
			Tu.	998	Lv. Billings . Ar.		10.55		
			We.	1839	Ar. Lincoln . Lv.		11.59		
			We.	1894	Ar. Omaha . Lv.		9.30		
			"	2049	" Kansas City . Lv.		6.00		

x Bus. z Motor. o Connects with No. 3 at Minneapolis.
 * Daily except Sunday by bus.

EQUIPMENT

No. 2. North Coast Limited—AIR CONDITIONED—(S.P. & S.-N.P.-C.B. & Q.)
 3 compartment, 1 drawing room, buffet-lounge-standard sleeping car, Pasco to Chicago; 10 section, 1 drawing room, 1 compartment standard sleeping car, Portland to Chicago; 16 section tourist sleeping car, Portland to Chicago; coach, Portland to Chicago; dining car, Pasco to Chicago.

No. 4-4. Columbia River Express—Alaskan. Reserved seat coach, air conditioned, Portland to Pasco, Pasco to Spokane. Cafe car, air conditioned, Portland to Pasco, Pasco to St. Paul. Standard sleeping car, air conditioned, 10 sections, 1 compartment, 1 drawing room, Spokane to St. Paul. Coaches, non-air conditioned, Portland to Pasco; air conditioned, Pasco to St. Paul.

WESTBOUND

No. 1. North Coast Limited—AIR CONDITIONED—(C.B. & Q.-N.P.-S. P. & S.)
 3 compartment, 1 drawing room, buffet-lounge-standard sleeping car, Chicago to Pasco; 10 section, 1 drawing room, 1 compartment, standard sleeping car, Chicago to Portland; 16 section tourist sleeping car, Chicago to Portland; coach, Chicago to Portland. Dining car, Chicago to Pasco, Wishram to Portland.

No. 3. Alaskan.—AIR CONDITIONED. Connects with S. P. & S. No. 1 at Pasco. Standard sleeping car, 10 sections, 1 compartment, 1 drawing room, St. Paul to Spokane. Cafe car, St. Paul to Pasco. Coach, St. Paul to Pasco, Pasco to Portland.

EMPIRE BUILDER AND NORTH COAST LIMITED ARE COMPLETELY AIR CONDITIONED

N. A. C. Non air-conditioned. Light face figures denote A. M. time. Bold face figures denote P. M. time. Ar. Arrive. Lv. Leave. f Stop on signal.



SPOKANE, PORTLAND AND SEATTLE RAILWAY SYSTEM

OREGON TRUNK RY.

Pacific Time

PORTLAND - WISHRAM - PASCO - SPOKANE TRAINS

Table with columns for Eastbound, Read Down and Westbound, Read Up. Includes stops like Portland, Vancouver, Pasco, and Spokane with arrival and departure times.

PORTLAND - REDMOND - BEND TRAINS

Table with columns for Read Down and Read Up. Includes stops like Portland, Redmond, Bend, and Wishram with arrival and departure times.

EQUIPMENT BETWEEN PORTLAND and BEND Trains Nos. 2-102 and 1-103. Coaches daily between Portland and Bend (N. A. C.); observation cars daily between Portland and Wishram, A. C. See page 3.

CONNECTION AT BEND FOR KLAMATH FALLS See schedule of Great Northern Ry. on page 6.

LYLE - KLICKITAT - GOLDENDALE TRAINS

Table with columns for No. 220 Daily ex. Sat., Miles, S. P. & S. Ry. June 12, 1943, Elevation, and No. 221 Daily ex. Sat.

EQUIPMENT—BETWEEN PORTLAND AND SPOKANE

Over-Night Limited. Trains Nos. 1 and 2. All regularly assigned equipment is air-conditioned. Observation-club 8 section standard sleeping cars with lounge, buffet, etc., standard 1 drawing room and 8 section, 2 compartment, 1 drawing room sleeping cars, latest type tourist sleeping cars, and coaches with lounges for women and men, and individual, reclining seats. N. A. C. coach, between Portland and Bend.

For Special Stops on Nos. 1 and 2. See left column, page 3, and under "References" below.

References: a Will stop to discharge revenue passengers from Spokane. b Will stop on signal to receive revenue passengers for Bingen-White Salmon, Vancouver and Portland. c Will stop on signal to receive revenue passengers for Vancouver and Portland. f Stop on signal. g Will stop on signal to discharge revenue passengers from Portland and Vancouver. h Will stop to discharge revenue passengers from Portland, Vancouver and Bingen-White Salmon. k Stops daily except Sunday. m Stops to receive or discharge revenue Passengers to or from Pasco and East. Telegraph stations. N.A.C. Non air-conditioned. A.C. Air conditioned.

SPOKANE, PORTLAND AND SEATTLE RAILWAY SYSTEM

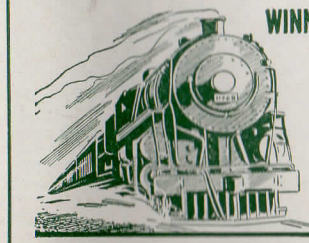


PORTLAND - ST. HELENS RAINIER - ASTORIA - CLATSOP BEACH TRAINS

Table with columns for Westbound-Read Down and Eastbound-Read Up. Includes stops like Portland, Astoria, Clatsop Beach, and Seaside with arrival and departure times.

TRAIN EQUIPMENT

Nos. 21 and 22, carry observation-reserved seat coaches and coaches between Portland, Astoria, Gearhart and Seaside. Cafe dining service in reserved seat coaches, seat fare 30c (plus tax) between Portland and Astoria, Gearhart and Seaside.



WINNING THE WAR IS ALL THAT MATTERS!

Today, when America's vast war effort demands that every muscle be strained in the interests of Victory, Railway Express is trying to do its part.



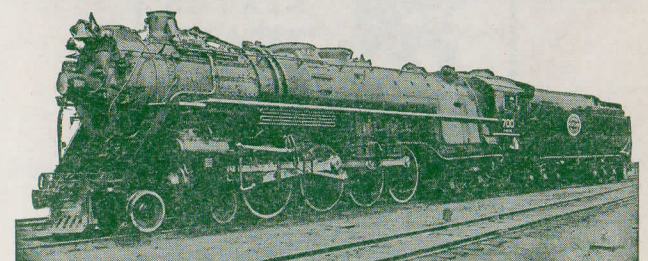
Light face figures denote A. M. time. Bold face figures denote P. M. time. Ar. Arrive. Lv. Leave / Stop on signal. † Telegraph office.

OREGON ELECTRIC RY. PORTLAND-SALEM-ALBANY-EUGENE

Table with columns for Miles, No. 21 Daily, and No. 22 Daily. Includes stops like Portland, Salem, Albany, and Eugene.

GREAT NORTHERN RY. BEND, KLAMATH FALLS, BIEBER

Table with columns for Daily Mixed, M., Gt. Northern Ry., and Daily Mixed. Includes stops like Bend, Klamath Falls, and Bieber.



Giants of the Rails on the Empire Builder and North Coast Limited

These great, fast, powerful locomotives handle the overnight limited trains of the Spokane, Portland and Seattle Railway between Portland and Spokane, in the through Portland-St. Paul-Chicago service of the famous Empire Builder via the Great Northern Railway and the North Coast Limited via the Northern Pacific Railway.

They embody every feature of superiority in motive power known to the famous Baldwin builder. A few dimensions will be of interest and show something of their size, elements for power and speed.

Length of engine and tender, 107 feet; weight 865,520 lbs.; diameter of driving wheels, 77 inches, boiler, 88 inches; steam pressure, 260 pounds per square inch; tractive power, 69,800 pounds; capacity of tender, 20,000 gallons of water, 6,000 of fuel oil; cylinders, 28 by 31 inches; all axles have roller bearings.

Light face figures denote A. M. time. Bold face figures denote P. M. time. Ar. Arrive. Lv. Leave / Stop on signal. † Telegraph office.

UNITED RAILWAYS PORTLAND-NORTH PLAINS-VERNONIA

Table with columns for Miles, No. 102 Daily, and No. 103 Daily. Includes stops like Portland, North Plains, and Vernonia.

RESPONSIBILITY

Not Responsible - The Spokane, Portland and Seattle Railway Company is not responsible for errors in time tables, inconvenience or damage resulting from delayed trains or failure to make connections; schedules herein are subject to change without notice.

Light face figures denote A. M. time. Bold face figures denote P. M. time. Ar. Arrive. Lv. Leave / Stop on signal. † Telegraph office.



SPOKANE, PORTLAND AND SEATTLE RAILWAY SYSTEM

CONNECTIONS AT PORTLAND

PORTLAND - PUGET SOUND - BRITISH COLUMBIA									
NORTHERN PACIFIC RY. - GREAT NORTHERN RY. - UNION PACIFIC R. R.									
Northbound—Read Down					Southbound—Read Up				
Daily	Daily	Daily	Daily	May 2, 1943	Daily	Daily	Daily	Daily	Daily
11.30	4.00	1.30	8.45	Lv. Portland, Un. Sta. Ar	2.20	5.05	9.40	6.45	
12.05	4.25	1.52	9.15	Lv. Vancouver, Wn. Ar	1.45	4.36	9.06	6.15	
12.57			10.03	Ar. Kalama Lv	12.56			4.55	
1.30	5.13	2.38	10.21	" Kelso-Longview " Ar	12.36	3.42	8.12	4.35	
1.48			10.37	" Castle Rock " Ar	12.17			4.05	
2.45	6.06	3.26	11.37	Ar. Chehalis " Ar	11.26	2.48	7.16	3.05	
3.10	6.21	3.35	11.46	" Centralia " Ar	11.15	2.43	7.06	2.53	
			12.08	Ar. South Bend " Ar			7.15		
			b12.22	Ar. East Olympia " Ar		2.13	b 6.35	1.59	
5.00	7.40	4.48	1.30	Ar. Tacoma " Ar	9.40	1.24	5.45	1.00	
† 1.36				Ar. Aberdeen " Ar				13.06	
† 1.55				Ar. Hoquiam " Ar				12.55	
k 6.45	k 9.00	k 5.80	u 2.55	Ar. Seattle Lv	k 8.20	k 12.30	u 4.30	k 11.30	
8.15	9.30	6.00		Lv. Seattle Ar	8.00		2.15	10.35	
9.18	10.44	6.56		Ar. Everett Lv	6.55		1.10	9.39	
11.40		9.10		Ar. Bellingham Lv			11.13	7.25	
2.05		11.15		Ar. Vancouver, B. C. Lv			9.00	5.15	

† Daily except Sunday. b To and from Olympia by bus. k King Street Station. p Stops from Portland and beyond. u Union Station.

SOUTHERN PACIFIC COMPANY											
Southbound, Read Down					Northbound, Read Up						
17	329	15	23	19	May, 1943						
10.00	7.15	7.00	5.20	8.00	0	Lv. Portland Ar	7.55	10.05	1.05	5.45	10.50
11.49	9.30	8.50	6.57	9.55	53	Ar. Salem Lv	5.50	8.05		3.55	8.50
12.45	10.35	9.45	7.40	10.44	80	" Albany " Lv	4.50	7.18		3.10	8.05
	11.05	11.05	8.35	11.15	91	" b. Corvallis b " Lv		6.45		2.35	7.00
1.45	11.42	10.45	8.38	11.55	124	" Eugene " Lv	3.30	6.05	9.48	2.05	6.43
	7.00				246	" Marshfield " Lv	7.00				
8.20		5.45	2.50	7.20	318	" Klamath Falls " Lv	11.10	4.15	7.55	12.10	
Oregonian	1.05	3.35	West Coast	b 4.58	144	" Cottage Grove " Lv	2.20				
	7.34	7.34	Cascade	b 7.20	196	" Roseburg " Lv	12.05				
	9.25	9.25	Beaver	b10.22	297	" Grants Pass " Lv	8.15				
				b11.27	329	" Medford " Lv	7.15				
				342	" Ashland " Lv	6.30					
b 8.05		6.00	b12.50	8.05	657	" Sacramento " Lv	10.20	5.15	7.40	10.40	
9.32	10.18	2.08	10.02	719		"Oakland, 16th St. " Lv	8.01	4.44	7.30	8.55	
9.40	10.25	2.15	10.10	721		"Oakland Pier. " Lv	7.56	4.35	7.15	8.40	
10.20	10.50	2.50	10.50	724		" San Francisco " Lv	7.30	4.00	6.30	8.00	
						" Los Angeles " Lv	5.30		8.00	8.00	

b—By Bus. All coach seats reserved except trains 329-330 and trains 18 and 19 between Portland and Eugene only.

EQUIPMENT OF TRAINS

Train 23-24. Cascade.—(Air Conditioned). Between Portland and San Francisco. Standard sleeping car with sections, drawing rooms, compartments, bedrooms. Dining car. First class tickets required.

Train 23-24. Beaver. (Air Conditioned). Between Portland and San Francisco. Tourist sleeping cars, reclining chair cars and dining car. Chair car seats reserved.

Train 15-16. West Coast.—(Air Conditioned). Between Portland and Los Angeles. Standard sleeping car, tourist sleeping car, reclining chair car and dining car.

Train 17-18. Oregonian.—(Air Conditioned). Between Portland and San Francisco. Standard sleeping car (sections, drawing rooms, compartments), tourist sleeping car, dining car and reclining chair car.

Train 19-20. Klamath.—(Air Conditioned). Between Portland and San Francisco. Standard sleeping cars, tourist sleeping cars, dining car, reclining chair cars and coaches.

Train 329-330. Rogue River.—Between Portland and Ashland. Standard A. C. sleeping car, sections and drawing room, lunch car, and coach. Between Portland and Marshfield, N. A. C. tourist sleeping car and coach.

SAN FRANCISCO—LOS ANGELES—COAST LINE											
38	76	70	72	98	August, 1943						
7.05	9.00	6.30	1.00	8.15	0	Lv. San Francisco Ar	5.35	6.00	6.45	8.45	9.00
8.20	10.03	7.40	2.10	9.08	47	Ar. San Jose Lv	4.25	5.02	5.15	7.50	7.45
8.10	3.00	1.35	10.10	1.19	248	" San Luis Obispo. " Lv	10.30	12.59	9.50	1.10	2.40
	5.58	5.05	2.25	3.35	367	" Santa Barbara. " Lv	10.37	5.10	9.50	11.44	
	9.00	8.35	6.45	6.00	471	" Los Angeles. Lv	8.15	1.00	6.30	9.00	

SAN FRANCISCO—LOS ANGELES—VALLEY LINE											
56	26	52	M		September 5, 1943						
	8.30	5.00	8.00		0	Lv. San Francisco Ar	9.30		9.20	6.50	
	9.05	5.35	8.30		4	" Oakland Pier. " Ar	8.59		8.45	6.15	
		5.00	11.55	2.00	206	Ar. Fresno Lv	3.50		2.45	10.15	
		9.30	2.55	4.25	313	" Bakersfield. " Lv	1.24		11.30	5.50	
		6.15	9.30	10.00	484	" Los Angeles. Lv	8.00		5.00	8.25	

All coach seats reserved except trains 37-38 and 56.

UNION PACIFIC RAILROAD									
Read Down					Read Up				
No.12	No.18	No.26	APRIL 25, 1943		No.25	No.17	No.11		
Daily	Daily	Daily	Daily	Daily	Daily	Daily	Daily	Daily	Daily
	8.00	6.30	9.00	Lv. Portland Ar	6.30	7.30	7.35		
	9.43	8.09	10.53	Ar. Hood River Lv	4.20	5.30	5.40		
	10.20	8.45	11.35	" The Dalles. Ar	3.25	4.50	5.00		
		12.05	3.15	Ar. Pendleton Ar	10.35	1.05			
		4.56	8.07	" Baker Lv	5.30	8.07			
		8.52	12.14	" Payette. Lv	3.23	6.18			
		9.07	12.26	" Ontario. Lv	3.10	6.08			
		10.10	1.35	" Nampa. Lv	1.55	6.10			
		10.50	2.15	Ar. Boise Lv	1.10	4.35			
		5.15	9.10	Ar. Pocatello Lv	5.55	11.00			
		9.55	1.40	Ar. Ogden Lv	12.55				
		11.30	3.15	Ar. Salt Lake Lv	11.05				
		7.35	1.50	Ar. Cheyenne Lv	1.45	8.45			
		11.15	6.00	Ar. Denver Lv	8.45	5.10			

CLATSOP BEACH

SEASIDE—GEARHART PACIFIC OCEAN

ALL-YEAR SEASHORE RESORT

Surrounded by evergreen forests and a background of mountains, Clatsop Beach has every facility for visitors—golf courses, fishing, amusement places, sea foods, pure water, good hotels, restaurants, cottages, and camps. Along the expanding Columbia River, from Portland to Astoria. Train schedules page 5.

Light face figures denote A. M. time. Bold face figures denote P. M. time. Ar. Arrive. Lv. Leave. f Stop on Signal.

SPOKANE, PORTLAND AND SEATTLE RAILWAY SYSTEM

CONNECTIONS AT SPOKANE AND PASCO

313	311	NORTHERN PAC.		312	314	NORTHERN PACIFIC		347	NORTHERN PACIFIC		348	Bus	Bus	GREAT NORTHERN RY.		Bus	Bus	SPOKANE INT'L—CAN. PACIFIC		1
Daily	Daily	Daily	Daily	Daily	Daily	Daily	Daily	Daily	Daily	Daily	Daily	Daily	Daily	Daily	Daily	Daily	Daily	Daily	Daily	Daily
9.00	8.00	Lv. Spokane Ar	7.35	7.35	8.00	Lv. Portland Ar	7.35	8.00	Walla Walla	7.35	5.30	8.15	Lv. Spokane Ar	3.12	7.17	9.00	Lv. Portland Ar	7.35		
9.30	8.40	Lv. Marshall Ar	7.41	7.41	8.00	Lv. Portland Ar	7.35	8.00	Walla Walla	7.35	5.30	8.15	Lv. Spokane Ar	3.12	7.17	9.00	Lv. Portland Ar	7.35		
9.46	8.56	Lv. Rosalia Ar	7.57	7.57	8.00	Lv. Portland Ar	7.35	8.00	Walla Walla	7.35	5.30	8.15	Lv. Spokane Ar	3.12	7.17	9.00	Lv. Portland Ar	7.35		
10.30	9.38	Lv. Oakesdale Ar	11.35	11.35	8.00	Lv. Portland Ar	7.35	8.00	Walla Walla	7.35	5.30	8.15	Lv. Spokane Ar	3.12	7.17	9.00	Lv. Portland Ar	7.35		
10.51	9.59	Lv. Garfield Ar	11.33	11.33	8.00	Lv. Portland Ar	7.35	8.00	Walla Walla	7.35	5.30	8.15	Lv. Spokane Ar	3.12	7.17	9.00	Lv. Portland Ar	7.35		
11.18	10.28	Lv. Palouse Ar	10.53	10.53	8.00	Lv. Portland Ar	7.35	8.00	Walla Walla	7.35	5.30	8.15	Lv. Spokane Ar	3.12	7.17	9.00	Lv. Portland Ar	7.35		
11.38	10.53	Lv. Fullman Ar	10.20	10.20	8.00	Lv. Portland Ar	7.35	8.00	Walla Walla	7.35	5.30	8.15	Lv. Spokane Ar	3.12	7.17	9.00	Lv. Portland Ar	7.35		
12.16	11.36	Lv. Moscow Ar	9.58	9.58	8.00	Lv. Portland Ar	7.35	8.00	Walla Walla	7.35	5.30	8.15	Lv. Spokane Ar	3.12	7.17	9.00	Lv. Portland Ar	7.35		
12.35	11.56	Lv. Kendrick Ar	8.58	8.58	8.00	Lv. Portland Ar	7.35	8.00	Walla Walla	7.35	5.30	8.15	Lv. Spokane Ar	3.12	7.17	9.00	Lv. Portland Ar	7.35		
1.40	12.50	Lv. Juliaetta Ar	8.50	8.50	8.00	Lv. Portland Ar	7.35	8.00	Walla Walla	7.35	5.30	8.15	Lv. Spokane Ar	3.12	7.17	9.00	Lv. Portland Ar	7.35		
1.49	12.58	Lv. Lewiston Ar	8.05	8.05	8.00	Lv. Portland Ar	7.35	8.00	Walla Walla	7.35	5.30	8.15	Lv. Spokane Ar	3.12	7.17	9.00	Lv. Portland Ar	7.35		
2.35	1.45	Lv. Lewiston Ar	8.05	8.05	8.00	Lv. Portland Ar	7.35	8.00	Walla Walla	7.35	5.30	8.15	Lv. Spokane Ar	3.12	7.17	9.00	Lv. Portland Ar	7.35		

6	4	NORTHERN PACIFIC East of Pasco		5	3	5	3	1	NORTHERN PACIFIC West of Pasco		2	6	4
Daily	Daily	Daily	Daily	Daily	Daily	Daily	Daily	Daily	Daily	Daily	Daily	Daily	Daily
8.00	9.00	Lv. Portland Ar	5.08	7.35	8.00	9.00	9.00	12.28	Lv. Portland Ar	5.08	5.08	7.35	
3.00	4.35	Lv. Pasco Ar	10.42	10.30	10.52	10.40	12.28	Lv. Pasco Ar	3.55	2.40	4.25		
	5.25	Lv. Connell Ar	9.53	9.39	11.02	10.55		Lv. Kennewick Ar		2.29	4.14		
	6.16	Lv. Lind Ar	9.09	8.53	12.06	11.59		Lv. Prosser Ar		1.32	3.26		
	5.25	Lv. Sprague Ar	8.42	8.24	12.53	12.53		Lv. Toppensish Ar		12.53	2.43		
f 6.01	7.14	Lv. Cheney Ar	8.07	7.46	1.30	2.50		Lv. Yakima Ar		1.50	12.15	2.00	
6.43	7.50	Lv. Cheney Ar	7.30	7.08	2.45	2.45	3.56	Lv. Ellensburg Ar		12.42	10.56	12.37	

356	354	352	NORTHERN PACIFIC		351	353	355
Daily	Daily	Daily	Daily	Daily	Daily	Daily	Daily
3.00	6.00	12.30	Lv. Spokane Ar	4.00	11.30	6.30	
4.30	7.30	2.00	Ar. Farragut Lv	2.30	10.00	5.00	

To CALIFORNIA

The trains of the S. P. & S. Ry., Spokane to Portland connect with Southern Pacific Co. trains at Portland, with coaches, tourist and standard sleeping cars.

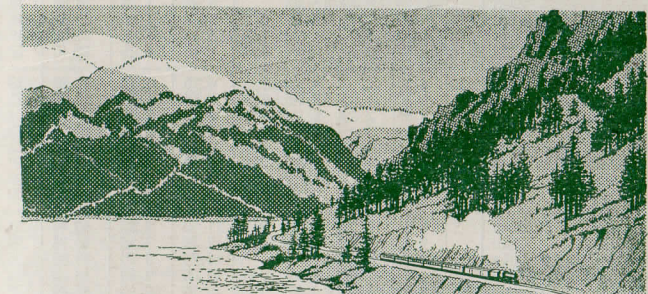
Trains leave Spokane 7:00 A.M. (N. P. Station) and 9:45 P.M. (G. N. Station); arriving Portland, Union Station, 5:08 P.M. and 7:35 A.M. Southern Pacific Co. trains for California schedules on page 8.

Coach tickets honored in coaches and *reserved seat coaches only; *intermediate tickets in tourist sleeping cars, reserved seat coaches, or coaches; *standard tickets in standard sleeping cars or other equipment.

*Additional charges for space occupied.

Consult your home ticket agent for details.

Light face figures denote A. M. time. Bold face figures denote P. M. time. Ar. Arrive. Lv. Leave. f Stop on Signal.



Columbia River and Cascade Range

Between Portland and Spokane

Along the Columbia and Snake Rivers and Through the Heart of the Cascade Range

BONNEVILLE DAM

BEACON ROCK

THE DALLES OF THE COLUMBIA

COLUMBIA RIVER GORGE





SPOKANE, PORTLAND AND SEATTLE RAILWAY SYSTEM

Sleeping, Parlor Car and Reserved Seat Fares

Federal Tax Extra

For information only. Subject to change without notice.

BETWEEN AND Effective April 1, 1942	PORTLAND		SPOKANE		Table basis for determining charges for Standard Upper Berths, Drawing Rooms and Compartments				
	Seat	Lower Berth Standard	Tourist	Lower Berth Standard	Tourist	Where Lower Berth rate is	Upper Berth rate will be	① Drawing Room rate will be	① Compartment rate will be
Astoria.....Ore.	\$*30								
Billings.....Mont.	\$ 8.45	\$ 5.65	\$ 5.25	\$ 3.55					
Bingen-Wm. Salmon Wn.	*.20		2.95	2.00					
Boston.....Mass.	25.15	22.30							
Bozeman.....Mont.	7.55	5.10	4.35	2.95	\$ 2.35	\$ 1.80	\$ 8.10	\$ 6.95	
Buffalo.....N. Y.	22.30	19.65			2.65	2.00	9.25	7.55	
Butte.....Mont.	6.70	4.50	3.50	2.35	2.95	2.20	10.40	8.10	
Camas.....Wash.	*.15		3.20	2.15	3.20	2.45	11.55	9.25	
Chicago.....Ill.	18.25	12.20	15.35	10.25	3.50	2.65	12.75	9.85	
Cincinnati.....Ohio	20.25		17.35		4.35	3.30	16.20	12.20	
Cleveland.....Ohio	20.80		18.25		4.65	3.55	16.20	13.35	
Denver.....Colo.	12.20		11.30		4.95	3.75	17.35	13.90	
Detroit.....Mich.	20.25		17.35		5.25	4.00	18.50	15.05	
Duluth.....Minn.	15.35	10.25	12.75	8.50	5.80	4.40	20.80	16.20	
Eugene.....Ore.	2.35	1.55	4.65	3.10	6.15	4.65	21.95	17.35	
Fargo.....N. D.	13.60	9.10	10.40	6.95	6.40	4.85	23.10	17.95	
Gardiner.....Mont.	8.10		4.95		6.70	5.10	24.30	19.10	
Glacier Park.....Mont.	6.40	4.30	3.20	2.15	7.55	5.75	26.60	21.40	
Grants Pass.....Ore.	2.95	2.00	6.15	4.10	7.85	5.95	27.75	21.95	
Great Falls.....Mont.	8.10	4.65	4.65		8.10	6.20	28.90	23.10	
Havre.....Mont.	8.10	6.50	4.95	3.30	8.45	6.40	30.05	23.75	
Helena.....Mont.	6.70	4.35	3.50	2.35	9.60	7.30	33.50	27.20	
Kansas City.....Mo.	15.35		13.35		9.85	7.50	34.65	27.75	
Klamath Falls.....Ore.	1.90	2.95	2.00	6.40	4.30	10.40	37.00	29.50	
Livingston.....Mont.	7.85	5.25	4.65	3.10	11.30	8.60	40.45	31.80	
Los Angeles.....Calif.	9.60	6.40	13.05	8.70	12.20	9.25	42.75	34.10	
Louisville.....Ky.	20.25		17.35		12.75	9.70	45.05	35.85	
Lyle.....Wash.	*.20		2.95	2.00	13.05	9.90	46.20	36.45	
Medford.....Ore.	2.95	2.00	6.40	4.30	13.35	10.15	47.40	37.60	
Minneapolis.....Minn.	15.35	10.25	12.75	8.50	13.60	10.35	48.55	38.15	
Missoula.....Mont.	5.80	3.85	2.95	2.00	14.75	11.25	52.00	41.60	
New Orleans.....La.	21.95		20.25		15.35	11.70	54.30	43.35	
New York.....N. Y.	25.15		22.30		17.35	13.20	61.25	48.55	
Oakland.....Calif.	6.40	4.30	9.85	6.60	18.25	13.90	64.70	51.45	
Omaha.....Neb.	15.35		12.75		18.85	14.30	65.85	52.60	
Pasco.....Wash.	*.35	2.95	2.00	1.55	19.65	15.00	69.30	55.45	
Philadelphia.....Pa.	24.30		21.70		20.00	15.20	70.50	56.05	
Pittsburgh.....Pa.	21.70		18.85		20.25	15.40	71.65	56.60	
Portland.....Ore.			3.50	2.35	21.70	16.50	76.25	60.70	
Roseburg.....Ore.	2.65	1.80	5.25	3.55	21.95	16.75	77.40	61.85	
St. Louis.....Mo.	17.35		14.75		22.30	16.95	78.55	62.40	
St. Paul.....Minn.	15.35	10.25	12.75	8.50	24.30	18.50	85.50	68.15	
Sacramento.....Calif.	6.15	4.10	9.60	6.40	25.15	19.15	88.95	70.50	
San Antonio.....Texas	20.00	13.35							
San Francisco.....Calif.	6.40	4.30	9.85	6.60					
Seaside.....Ore.	*.30								
Seattle.....Wash.	1.20	2.95	2.00	3.50					
Spokane.....Wash.	*.50	3.50	2.35						
Stevenson.....Wash.	*.20		2.95	2.00					
Tacoma.....Wash.	*.90	2.95	2.00	3.50					
Vancouver.....Wash.	*.15		3.50	2.35					
Washington.....D. C.	24.30		21.70						
Wishram.....Wash.	*.25		2.95	2.00					

The charge for upper berths in Tourist cars is approximately 76% of the charge made for lower Tourist berth.

① Applies for 2 or more passengers. When occupied by one passenger drawing room rate is 2 1/2 times Standard lower berth rate and compartment is two times Standard lower berth rates.

Rate for section when lower berth only is occupied will be quoted by ticket agents.

When both lower and upper berths are used, combination of fares will apply.

* Reserved Seat Coach fares on day trains.

Through cars not operated in all trains; fare applies for continuous trip via direct connections. A compartment is a private room with lower and upper berths and toilet; a drawing room has a divan berth in addition. Occupancy of a drawing room requires 1 1/2 adult rail tickets, or their equivalent; requirement for compartment, one such ticket between S. P. & S.-N. P.-G. N. and connections. 1 1/10 between certain other lines; requirement for section, one such ticket.

BAGGAGE IN SLEEPING CARS.—Hand baggage in sleeping cars is restricted to what may conveniently be placed in berth or at seat occupied by passengers. All baggage should be marked with name and permanent address of owner.

GENERAL OFFICES

EXECUTIVE, TRAFFIC AND PURCHASING DEPARTMENTS
American Bank Building
621 S. W. Morrison Street

ACCOUNTING AND OPERATING DEPARTMENTS

N. W. Eleventh Avenue and N. W. Hoyt Streets
PORTLAND, OREGON

- F. J. GAVIN**..... President..... St. Paul 1, Minn.
C. E. DENNEY..... Vice-President..... St. Paul 1, Minn.
T. F. DIXON..... Vice-President and General Manager, Portland 7, Oregon
ROBT. CROSBIE..... Comptroller..... Portland 7, Oregon
A. J. WITCHEL..... Secretary and Chief Engineer..... Portland 7, Oregon
T. L. PADDEN..... Treasurer..... Portland 7, Oregon
E. H. SHOWALTER..... Purchasing Agent..... Portland 7, Oregon
J. C. MOORE..... Superintendent..... Portland 7, Oregon
G. L. WILLIAMS..... General Freight and Passenger Agent..... Portland 7, Oregon
H. W. SHIELDS..... Assistant General Passenger Agent..... Portland 7, Oregon
GEO. F. EHLEN..... Assistant General Freight Agent..... Portland 7, Oregon
KENNETH C. MILLER..... Asst. to the Gen. Frt. & Pass. Agt..... Portland 7, Oregon
J. C. DARRIES..... Agent..... Portland 7, Oregon
J. C. DARRIES..... Right of Way and Tax Agent..... Portland 7, Oregon

- Representatives**
- ALBANY, ORE.**..... E. V. GRAHAM (Phone M. 291)..... Agt., O. E. Ry. Sta.
ASTORIA, ORE...... R. C. BAKER, 20th and Commercial (Phone 113)..... Agent
BEND, ORE...... M. O. GARDNER, City Passenger and Ticket Agent
EUGENE, ORE...... R. P. JEFFREY (Phone 454)..... Agent, Passenger Sta.
HILLSBORO, ORE...... L. A. DUSENBERRY..... Passenger Sta.
JUNCTION CITY, ORE...... B. P. GILBERT (Phone 438)..... Trav. Frt. & Pass. Agt.
LOS ANGELES 14, CALIF...... S. A. SEXSMITH (Phone 140)..... Agent, O. E. Ry. Sta.
LOS ANGELES 14, CALIF...... E. B. NELSON..... Traveling Freight Agent
LOS ANGELES 14, CALIF...... L. SHERMAN (Ph. M. 541)..... Agt., O. E. Ry. Frt. Depot
LOS ANGELES 14, CALIF...... L. W. MALLORY (Ph. M. 382)..... Agt., O. E. Ry. Frt. Depot

- Great Northern Railway, 919 Associated Realty Bldg., Phone Vandike 1201.**
W. E. McCORMICK..... General Agent
S. L. WILLIAMS..... City Passenger Agent
H. D. HANSCOM..... Trav. Freight & Pass. Agent
Northern Pacific Railway, 401 Associated Realty Bldg., Phone Trinity 2322.
J. C. SPRACKLIN..... General Agent
J. E. BEATTY..... City Freight & Pass. Agent
T. A. MURPHY..... Traveling Freight & Passenger Agent
OAKLAND 12, CAL...... G. R. LALLY, Gen. Agent, Gt. Nor. Ry., 611 Central Bank Building, Phone Templebar 7672-73.
D. F. WALKER, Gen. Agt., Nor. Pac. Ry., 815 Central Bank Building, Phone Glencourt 8717.

- PORTLAND, ORE.**..... **A. F. LEE**..... General Agent
 Consolidated Ticket Office, S. W. Broadway and Morrison St. Telephone BRy. 5631.
J. L. MILLER, Ticket Agent, Union Station, Foot of N. W. 6th Avenue, Telephone Broadway 3421.
R. E. HENDERSHOTT..... General Agent
R. A. LAWRENCE..... Trav. Freight and Pass. Agent
J. T. HARDY..... City Freight Agent
W. Z. MYERS..... City Freight Agent
C. J. LIVINGSTON..... District Passenger Agent
N. E. SWAN..... Traffic Representative
P. H. BRINGMANN, Local Freight Agent, N. W. 11th and Hoyt, Phone ATwater 9111.

- REDMOND, ORE.**..... **G. W. SEXSMITH** (Phone 13) Agt., Passenger Station
SACRAMENTO, CAL...... **H. D. DAY**, Gen. Agt., Gt. Nor. Ry., 223 Forum Bldg.
ST. HELENS, ORE...... **M. RUTHERFORD** (Phone 58) Agt., S. P. & S. Station
SALEM, ORE...... **J. CONDR** (Phone 4763)..... O. E. Ry. Freight Depot
SAN FRANCISCO 5, CAL.
Northern Pacific Railway, 657 Market St. (Palace Hotel), Phone Sutter 1078.
DANIEL TINNEY..... General Agent
H. E. PETERSEN..... Assistant General Agent
W. CEDERBERG..... Trav. Freight and Pass. Agt.
C. H. GAARDSMOE..... Trav. Freight and Pass. Agent
R. O. WILSON..... City Freight and Pass. Agent
W. J. RIDDELL..... City Ticket Agent

- Great Northern Railway, 679 Market Street, Phone Sutter 6051-52.**
A. L. SCOTT..... General Agent
C. G. ALEXANDER..... Traveling Passenger Agent
JOSEPH L. TIERNEY..... City passenger Agent
878 Monadnock Bldg. Phone Yukon 1246-7-8.
G. F. HARDY..... General Freight Agent
G. A. SORRELL..... General Agent, Freight Dept.
C. O. BUTLER (Phone 45), Agent, S. P. & S. Ry. Sta.
SPOKANE 8, WASH...... **J. C. WRIGHT**, General Agent, 925 Old National Bank Building, Phone Main 4238.
R. C. MURPHY, General Agent, Passenger Dept. Davenport Hotel, Phone Main 5141.
E. F. BAIRD, City Passenger and Ticket Agent, Sprague Ave. and Wall St. Phone Main 5321.
H. W. GREEN..... Ticket Agent, Gt. Nor. Ry. Sta.
H. M. LaBERTEW, Agent (Phone 2881), S. P. & S. Ry. Sta.
R. I. THOMPSON (Phone 735)..... Passenger Station

- PASSENGER STATIONS**
- PORTLAND, ORE.**..... S. P. & S. Ry., Union Station, Foot of Sixth Avenue.
SPOKANE, WASH...... Great Northern Station, Trains Nos. 1 and 2.
 Northern Pacific Station, Nor. Pac. trains Nos. 5 and 4, connecting at Pasco with S. P. & S. trains Nos. 3 and 4.



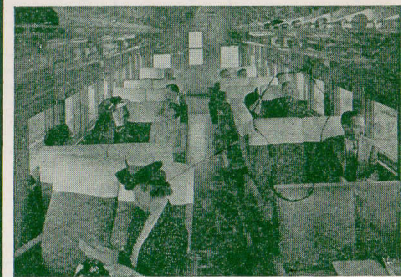
THE DAY TRIP

Between
PORTLAND AND SPOKANE
on the
COLUMBIA RIVER EXPRESS

Between Portland and Pasco, via S. P. & S. Ry., and directly connecting trains between Pasco and Spokane via Northern Pacific Ry., with similar service.

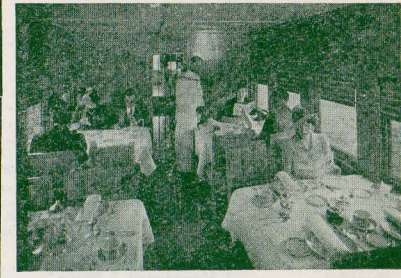
AIR-CONDITIONED RESERVED SEAT COACHES WITH CAFE SERVICE

This is the day train service between these important cities through a fascinating country.



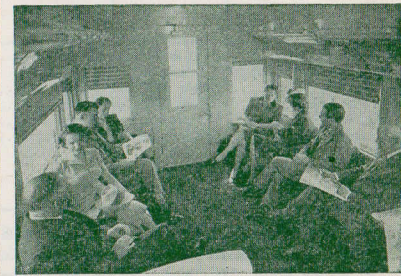
Reserved Seats

Reserved seats (50c plus tax) are of the latest individual, adjustable type, and passengers may enjoy many club features, including observation section, magazines, card table, writing desk, etc., with the dining room for sixteen guests, offering a generous range of menu at moderate prices.



Dining Room

Mt. Hood and others of the Cascade Range, the great Bonneville dam, two crossings of the Columbia river with 220 miles along its north bank, with forests, waterfalls, etc.



Observation Section

Schedules and equipment of these trains and of the night limited trains are shown on page 3, and fares on page 10.