

STAGE AND BOAT CONNECTIONS

To points in Oregon and Washington reached from stations on the Spokane, Portland and Seattle Ry. east of Portland and on Oregon Trunk Ry.

Table with columns: Destination, From, Conveyance, Days, Time, Fare, Free Baggage Lbs. Lists routes to Oregon and Washington.

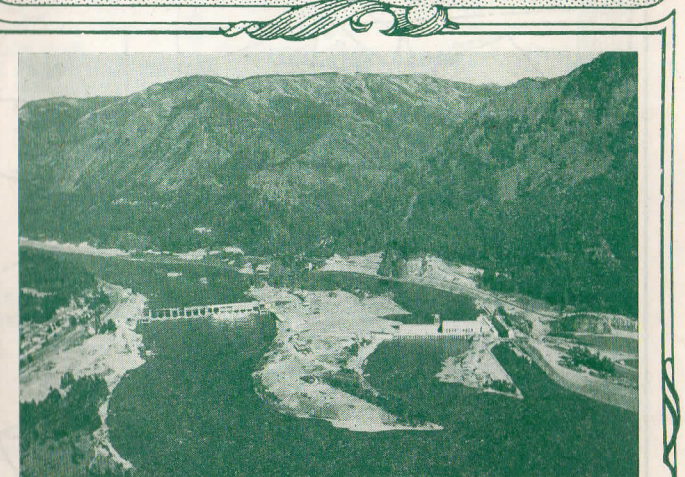
Note 1—12:35, hourly 7:40 A.M. to 4:40 P.M., incl., 6:40, 9:35 P.M. \* Suspends only in case of heavy ice in river. † 7:30 A.M. to 7:15 P.M. ‡ 7:30 A.M. and 4:30 P.M. Ex. Sun.—Except Sundays. x Stage driver may be called by passengers from Trains Nos. 1 and 2. Fare \$1.00.

SHIP AND TRAVEL BY TRAIN



Spokane, Portland and Seattle Ry. Oregon Trunk Ry. Oregon Electric Ry. United Railways Co.

TIME TABLES



Bonneville Dam, Columbia River, from Train Windows, S. P. & S. Ry.

SUBJECT TO CHANGE WITHOUT NOTICE

SPOKANE, PORTLAND AND SEATTLE RAILWAY SYSTEM



TRANSCONTINENTAL TRAIN SERVICE—BETWEEN PORTLAND, SPOKANE AND THE EAST

VIA NORTHERN PACIFIC RY.

Train schedule table for Northern Pacific Ry. showing Eastbound and Westbound routes with train numbers, times, and distances.

z Motor. \*Service June 20-September 13.

VIA GREAT NORTHERN RY.

Train schedule table for Great Northern Ry. showing Eastbound and Westbound routes with train numbers, times, and distances.

x Stops June 15 to Sept. 15 † Except Sunday. h Stops to discharge passengers from west of Spokane.

EASTBOUND EQUIPMENT

No. 2. North Coast Limited.—AIR CONDITIONED. Observation club car service with barber, valet, bath, fountain, library, radio, etc., standard 10 section, 1 compartment, 1 drawing room sleeping car, latest type tourist sleeping car and de luxe coach (free pillows Portland to Spokane), Portland to Chicago via Pasco. Standard sleeping cars, Butte to Kansas City; tourist sleeping car, Spokane to Kansas City. Standard sleeping car and coach, Alliance to Denver. Chair car, Billings to Kansas City. Dining car service, Spokane to Chicago, and Billings to Kansas City. Observation-lounge, standard sleeping, chair and dining cars, St. Joseph to St. Louis.

No. 4-4. Columbia River Express.—Alaskan.—Observation, cafe, reserved seat coach (individual chairs, 50c) and coaches Portland to Spokane. Air conditioned standard sleeping cars, cafe car dining service and coaches, Spokane to St. Paul. No. 50. Observation-lounge car, standard and tourist sleeping cars, coaches and dining car.

WESTBOUND

No. 1. North Coast Limited.—AIR CONDITIONED. Observation club car service with barber, valet, bath, fountain, library, radio, etc., standard 10 section, 1 compartment, 1 drawing room sleeping car, latest type tourist sleeping car and de luxe coach (free pillows Spokane to Portland), Chicago to Portland via Pasco. Standard sleeping cars, Kansas City to Butte, latest type tourist sleeping cars, Kansas City to Spokane. Chair cars St. Louis to St. Joseph, Kansas City to Billings. Dining car service for all meals.

No. 3-1. Alaskan.—AIR CONDITIONED.—Standard sleeping cars, cafe car and coaches St. Paul to Spokane. Connects with No. 1 at Spokane for Portland. See above No. 23. Air conditioned. Observation parlor car, dining car, chair cars.

EMPIRE BUILDER AND NORTH COAST LIMITED ARE COMPLETELY AIR CONDITIONED

Light face figures denote A. M. time. Dark face figures denote P. M. time. Ar. Arrive. Lv. Leave. f Stop on signal.

EASTBOUND EQUIPMENT

No. 2. Empire Builder.—AIR CONDITIONED. Observation club car service with barber, valet, bath, library, fountain, radio, etc., standard 8 section, 2 compartment, 1 drawing room, sleeping car, and latest type tourist sleeping car Portland to Chicago. Standard 12 section, 1 drawing room sleeping car Portland to Spokane; standard sleeping cars Glacier Park to Omaha; Edgemont to Denver. Dining car service Spokane to Chicago, Glacier Park to Great Falls, and Billings to Kansas City. De luxe coach, Portland to Spokane (free pillows), Spokane to Chicago. Coach, Shelby to Billings, and reclining chair car Billings to Kansas City. Coach, Alliance to Denver.

No. 2-28. Observation Club Car, with barber, valet, bath, library, fountain, radio, etc. Standard and latest type tourist sleeping car and coaches (all air conditioned). Portland to Spokane, and non-air conditioned coaches only, Spokane to St. Paul.

WESTBOUND

No. 1. Empire Builder.—AIR CONDITIONED. Observation club car service with barber, valet, bath, library, fountain, radio, etc., standard 8 section, 2 compartment, 1 drawing room, sleeping car and latest type tourist sleeping car Chicago to Portland. Dining cars Chicago and Kansas City to Portland. De luxe coaches Chicago to Spokane, Kansas City to Billings, Billings to Shelby, and Spokane to Portland. Standard sleeping cars, Omaha to Glacier Park; Denver to Alliance.

No. 27-1. Coaches only, St. Paul to Spokane, and air conditioned observation club car with barber, valet, bath, library, fountain, radio, etc. Standard 12 section, 1 drawing room, sleeping car, latest type tourist sleeping car, and de luxe coaches, with free pillows, Spokane to Portland.



SPOKANE, PORTLAND AND SEATTLE RAILWAY SYSTEM

OREGON TRUNK RY.

Pacific Time

PORTLAND - WISHRAM - PASCO - SPOKANE TRAINS

Table with columns for No. 4 Daily, No. 2 Daily, No. 1 Daily, El. va., Miles, and Spokane, Portland and Seattle Railway. Includes sub-sections for Eastbound, Read Down and Westbound, Read Up.

PORTLAND - REDMOND - BEND TRAINS

Table with columns for No. 2 Daily, Miles, Spokane, Portland and Seattle Railway, Elevation, and No. 1 Daily. Includes sub-sections for Read Down and Read Up.

EQUIPMENT BETWEEN PORTLAND and BEND

Trains Nos. 2-102 and 1-103. Standard 16 section sleeping cars leave Portland Sun., Tues. and Thurs. for Bend; leave Bend Mon., Wed. and Fri. for Portland.

CONNECTION AT BEND FOR KLAMATH FALLS

See schedule of Great Northern Ry. on page 6.

LYLE - KLICKITAT - GOLDENDALE TRAINS

Table with columns for No. 220 Daily, Miles, S. P. & S. Ry., Elevation, and No. 221 Daily. Includes sub-sections for Read Down and Read Up.

Ex. Sat. denotes daily except Saturdays. Ex. Sun. denotes daily except Sunday. Equipment, coaches.

For Special Stops on Nos. 1 and 2. See left column, page 3, and under "References" below.

- References: a Will stop on signal to discharge revenue passengers from Spokane. b Will stop on signal to receive revenue passengers for Bingen-White Salmon, Vancouver and Portland.

EQUIPMENT—BETWEEN PORTLAND AND SPOKANE

Over-Night Limited. Trains Nos. 1 and 2. Every regularly assigned car air-conditioned. Observation-club cars with barber, bath, valet periodicals, fountain, radio, etc.

SPOKANE, PORTLAND AND SEATTLE RAILWAY SYSTEM



PORTLAND - ST. HELENS RAINIER - ASTORIA - CLATSOP BEACH TRAINS

Table with columns for No. 23 Daily, No. 31 Sat. Only, No. 21 Daily, Miles, S. P. & S. Ry. Pacific Time, No. 22 Daily, No. 24 Daily, No. 30 Sun. Only. Includes sub-sections for Westbound, Read Down and Eastbound, Read Up.

TRAIN EQUIPMENT

Nos. 21, 24, 30 and 31 carry observation-parlor cars, coaches and smoking cars between Portland, Astoria and Seaside. Nos. 23 and 22 carry coaches and smoking cars daily, and observation-parlor cafe cars on No. 23 Fridays, Saturdays and Sundays, and No. 22 Saturdays, Sundays and Mondays.

REFERENCES

- a—Stops on signal to receive passengers for Astoria and scheduled stations west thereof. m—No. 31 stops to discharge North Beach revenue passengers at 14th St. (Ferry dock).

OREGON ELECTRIC RY. PORTLAND-SALEM-ALBANY-EUGENE

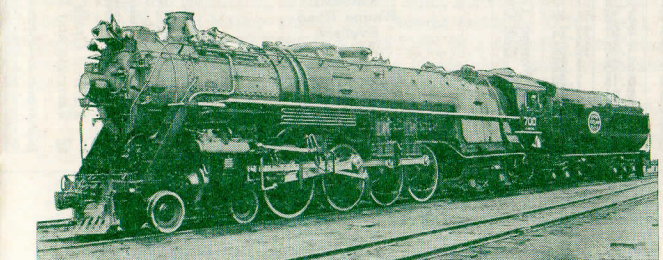
Table with columns for Miles, Oregon Electric Sta., and Freight Service Only. Includes sub-sections for Portland-Garden Home, Wilsonville, and Salem-Albany.

UNITED RAILWAYS PORTLAND-NORTH PLAINS-VERNONIA

Table with columns for Miles, S. P. & S. Ry., and Freight Service Only. Includes sub-sections for Portland-Linnton and North Plains-Vernonia.

GREAT NORTHERN RY. BEND, KLAMATH FALLS, BIEBER

Table with columns for Daily Mix'd, M, Gt. Northern Ry., Daily Mix'd, and Freight Service Only. Includes sub-sections for Bend, Lava Jet, La Pine, Fremont, Crescent, Chemult, Chilquien, Algora, Klamath Falls, So. Klamath, Merrill, Malin, Scarface, Lookout, and Bieber.



Giants of the Rails

These great, fast, powerful locomotives have just been placed on the runs of the overnight limited trains of the Spokane, Portland and Seattle Railway between Portland and Spokane, in the through Portland-St. Paul-Chicago service of the famous North Coast Limited via the Northern Pacific Railway and the Empire Builder via the Great Northern Railway.

They embody every feature of superiority in motive power known to the famous Baldwin builder. A few dimensions will be of interest and show something of their size, elements for power and speed.

Length of engine and tender, 107 feet; weight 865,520 lbs.; diameter of driving wheels, 77 inches, boiler, 88 inches; steam pressure, 260 pounds per square inch; tractive power, 69,800 pounds; capacity of tender, 20,000 gallons of water, 6,000 of fuel oil; cylinders, 28 by 31 inches; all axles have roller bearings.





## SPOKANE, PORTLAND AND SEATTLE RAILWAY

Trains Follow the Columbia River Over 300 Miles



Cascade Range, Columbia River

Vancouver, Hudson's Bay headquarters from 1825 to 1846, and U. S. army post from that early day until the present, is a city of interest and enterprise, with extensive manufacturing, grain handling, rail and deep water shipping facilities.

At historic Vancouver the railroad again crosses the Columbia River then the Willamette, and follows the line of the lower harbor, past lumber mills and many other extensive industrial concerns on its double-tracked entrance to Portland.

### Portland, The "Rose City"

Portland, Oregon is the heart of this wonderful Pacific Northwest out-of-doors land, with a delightful climate.

A city of 352,000 population, Portland is unusual in the beauty of situation, lying on both sides of the Willamette River, watched over by mountain ranges in three directions, while to the fourth lies the beautiful and fertile valley of the Willamette—all encompassed by the richness of evergreen forests.

Portland has splendid hotels, homes, parks, public buildings, libraries, theatres, stores, bazaars and amusement places. A fine system of boulevards covering the city, surrounding districts of scenic advantage and the distant countryside affords visitors delightful automobile trips. The well-famed Columbia River Highway, leading eastward along the sheer cliffs of the Columbia River, through the heart of the Cascade Range, reveals an amazing and changing panorama of snow-peaked mountains, Hood and Adams, the expanding waters of the Columbia, glacial-fed cataracts, and forests of fir, pine, larch and cedar. Here rose culture has reached such perfection that Portland has well been named the Rose City.

The historic old battleship *Oregon* rests in her permanent berth in the Willamette River, near the business district of Portland, open to visitors.



Bonneville Dam from S. P. & S. Ry. Trains

### Along the Lower Columbia River Portland to Astoria and the Sea

In all this land of history, romance and scenic interest, no short trip gives the visitor so rich and changing a view of sweeping river, forest, mountain and ocean as this.

This train or motor stage ride along the shores of the Willamette and Columbia Rivers between Portland, Astoria and the Pacific Ocean, gives the eye nature's true tints of a beautiful picture rare in its composition, variety and extent.

In the run of about four hours are scenes novel to the tourist—lumber mills and logging operations, river and ocean craft, fishing villages, fleets of fishermen's boats and forested coast ranges. For miles, soon after leaving Portland, Mt. St. Helens dominates the skyline.

Opposite Rainier are seen the great docks and sawmills of Longview.

The track follows the shore of the ever-widening Columbia River, with changing vistas, to Astoria.

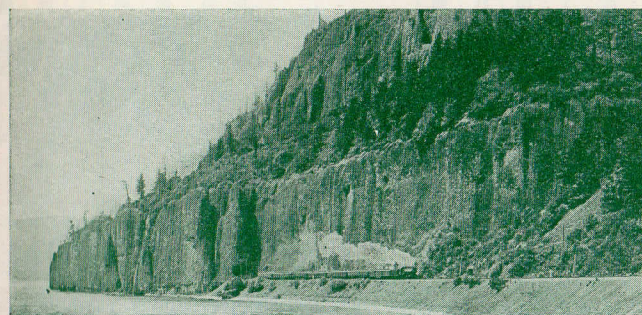
### Astoria

The first American settlement on the Pacific Coast was at Astoria in 1811, although that spot previously had been visited by Captain Robert Gray in 1792 and the Lewis and Clark expedition in 1805-6. On a hilltop an imposing column 126 feet high commemorates the establishment of the city, as well as the discovery of the Columbia River by Captain Gray, the explorations of Captains Lewis and Clark, the enterprise of John Jacob Astor, and the coming of the pioneers.

Rising on the slopes of the Columbia River, the homes and public buildings overlook a vast panorama of mountain, forest, river and ocean.

Astoria's modern maritime importance is evidenced by the miles of busy waterfront, the shipping, docks, lumber and flouring mills, salmon canneries and other enterprises.

The city is the center of the salmon fishing and canning industries.



Cape Horn, Columbia River



Portland, Mt. Hood

## SPOKANE, PORTLAND AND SEATTLE RAILWAY

Mountains, Rivers, Forests and Ocean



Following the extensive waterfront of the city, the line crosses a long bridge over Young's Bay, and runs through meadows, fields of wild flowers, golden banks of Scotch broom and evergreen woods to the end of the famous Lewis and Clark Trail at Clatsop Beach on the Pacific Ocean.

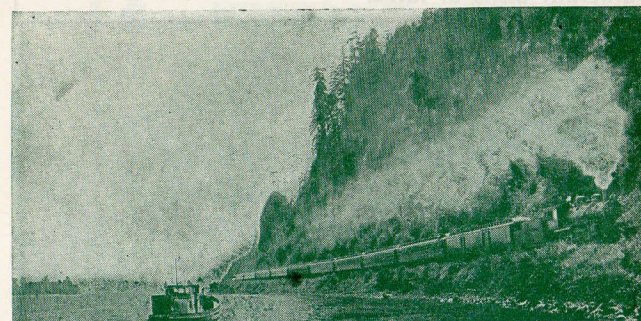
### Clatsop Beach, Pacific Ocean

Southward for twenty-five miles from the mouth of the Columbia River, reach the smooth, surf-washed sands of Clatsop Beach, ending at the dominating heights of densely forested Tillamook Head.

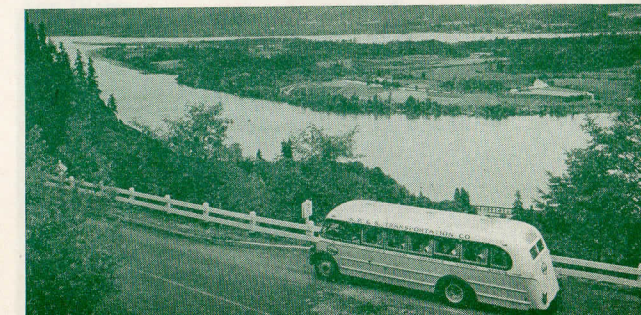
Upon this vast natural veranda of the Pacific Ocean, hotels, cottages, homes and camps abound. There are accommodations for all desires, from the first class hotels and roomy cottages to modest boarding places, comfortably furnished tent houses and campsites.

Clatsop Beach is devoid of the barrenness sometimes associated with the seacoast. Here are rolling, grassy meadows and groves of evergreen spruce, with a background of virgin forest reaching to the nearby mountain tops.

It is an all-year resort, for freezing weather is seldom known, and the ever-refreshing and recreating influence of the soft salt air and music of the sea waves in surroundings of unusual richness and beauty, entice lovers of nature and the weary to this spot at all seasons. Spring and autumn are delightful. But the glory of the year is summer, when conditions here reach perfection, with azure sky, argent cloud, ocean's deep blue, salt breeze, soft days and cool nights inviting open fires, blankets and slumber. Clatsop Beach is supplied with pure spring water from the mountains. The climate is extremely healthful, and there are no mosquitoes or similar pests.



Lower Columbia River



Clatsop Crest, Lower Columbia River Highway



Tongue Point, near Astoria

The surf bathing at Clatsop Beach is invigorating and delightful. The water is free from rocks, sea growths or drift matter, and the descent is gradual.

Aside from the pleasures of bathing in the surf, lolling in the sands or tramping for miles the wave beaten shore, visitors find that nature has been generous in furnishing many attractions for out-of-door life. Tillamook Head provides a good climb through forest of giant spruce, rewarded by grand views of ocean, mountain and timberland; mountain streams give fine fishing in season; tide-washed rivers invite canoeing or boating; trails to distant points through meadows and woods allure the pedestrians; and man has constructed splendid highways and bridle paths.

Hotels and restaurants make a specialty of crabs, clams and other sea-foods, with dairy products, poultry and eggs from nearby ranches.

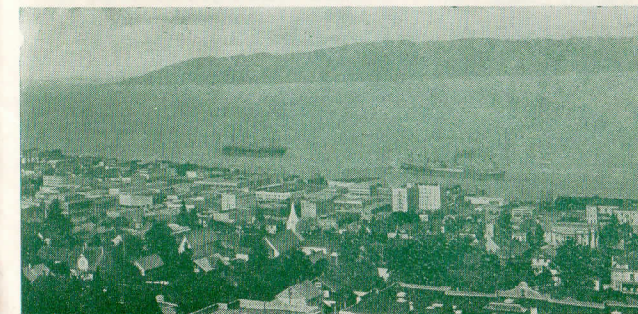
Clatsop Beach has enjoyed a fine growth in population from large numbers of people who appreciate the delightful advantage of homes at the seashore, and have builded hundreds of cottages facing the sea, in the meadows or near the friendly spruce groves.

No other Pacific Ocean resort in the Northwest offers lovers of the sea so great a variety of attractions, amusements and accommodations as Clatsop Beach, centered at Seaside and Gearhart.

### Gearhart

At Gearhart an eighteen-hole golf course is laid upon rolling sweeps between ocean front and evergreen forest. Its natural situation is a real joy to lovers of the game. Visitors have the use of the links by payment of a modest greens fee.

Hotel Gearhart and Ocean House occupy splendid locations, with commanding views of the ocean, forest and golf links, and dining rooms and sun porches facing the ocean. Accommodations are provided for large numbers of first-class patrons. Numerous cottages are available for the season or shorter periods. Beside golf there are riding horses, tennis, etc.

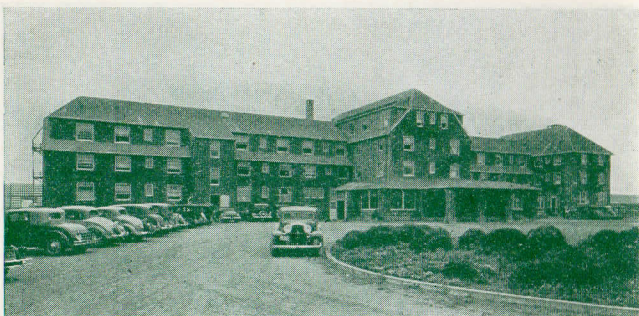


Astoria, Columbia River



# SPOKANE, PORTLAND AND SEATTLE RAILWAY

To Clatsop Beach, Seaside, Gearhart, Pacific Ocean



Hotel Gearhart, Clatsop Beach

### Seaside

Seaside is a city of several thousand during the summer season, and hotels, restaurants, boarding places, and stores are open all the year. It is well equipped with modern improvements—paved streets, light, water and a long ocean front promenade.

Seaside's public golf course is largely patronized the year around. It is splendidly located on both sides of the beautiful Necanicum River, and reaches toward the ocean front. A small greens fee is charged visitors.

Seaside has numerous hotels, restaurants, apartments, boarding houses, cottages and tents for rent, salt water natatorium, aquarium, churches, stores, markets, theatres, dance pavilions, day nursery for children, riding horses, etc. Seaside is the end of the historic Lewis and Clark Trail. Here, appropriately marked, is the site of the salt camp of Lewis and Clark in 1805-6.

The Seaside Hotel occupies a commanding site on the promenade and ocean front, provides accommodation for a large number of guests, and meets the requirements of the best resort patronage, with lounge and dining room facing the ocean.

It and numerous other hotels, apartments, cottages, boarding and rooming houses and camp facilities, provide a range in accommodation and price to meet varying wishes or needs.

### Cannon Beach

Ten miles south of Seaside by a good motor road leading through splendid forest and over Tillamook Head is the twelve mile's stretch of wide, hard sands of Cannon Beach with a most beautiful combination of fantastic rocks, forests and ocean fronts. This wonderful beach derives its name from an ancient bronze cannon found in the surf-washed wreckage of some old wooden frigate. Regular motor stage service is provided from Seaside.

Hotels, cottages and camps front on this beautiful beach.



Seaside, Clatsop Beach

### North Beach

On the Washington side of the Columbia River, extending northward, is North Beach, reached by ferry-motor stage service from Astoria. Its chief attraction is the beach itself, facing the Pacific for twenty-five miles, and at low tide affording a boulevard of compact sand the entire distance.

Summer hamlets sheltered in groves of spruce are strewn along the shore in goodly number, each provided with comfortable hotel, cottage and camp accommodations. The principal points are Seaview, Long Beach and Ocean Park.

It is a great place for the pedestrian, who may take short or long walks to points of changing interest, and surf bathing is ideal.

## Round Trip Fares Summer 1938

### FROM PORTLAND

**\$3.50**—Astoria, Seaside, Gearhart; Friday, Saturday and Sunday. Return limit Monday.

**\$4.00**—Astoria

**\$4.65**—Gearhart } Every day. Return limit 10 days

**\$4.75**—Seaside

**\$5.00**—Astoria, Gearhart, Seaside Every day.

Return limit October 31.

**\$17.50** Ten ride family ticket, Astoria, Gearhart, Seaside. Every day, limit three months.

Tickets at these fares are honored on trains or stages in either direction at option of passenger.

### FROM SPOKANE

**\$21.90** daily, return limit October 31.

Similar fares from other points in Pacific Northwest. Round-trip tickets are on sale at other seasons, on different basis of fares.



Seaside Hotel, Clatsop Beach



Cannon Beach



# SPOKANE, PORTLAND AND SEATTLE RAILWAY SYSTEM

## CONNECTIONS AT SPOKANE AND PASCO

4-313 Daily	2-311 Daily	NORTHERN PAC.	312-1 Daily	314-1 Daily	256 Daily	GREAT NORTHERN RY.	255 Daily	64 ExSu.	GREAT NORTHERN RY.	67 ExSu.	4-2 Daily	SPOKANE INT'L-CAN. PACIFIC	1-1 Daily
8.30	9.30	Lv. Portland . Ar	7.35	7.35							8.30	Lv. Portland . Ar	7.35
9.30	8.40	Lv. Spokane . Ar	1.10	8.10	8.25	Lv. Spokane . Ar	4.50	8.15	Lv. Spokane . Ar	6.30	11.45	Lv. Spokane (S.I.Ry.) Ar	11.50
9.47	8.57	Marshall . . .	12.54	7.55	9.28	Deer Park . . .	3.45	9.35	Spring Valley . . .	5.07	4.40	Ar. Macleod (C.P.R.) . Lv	10.55
10.31	9.41	Rosalia . . .	12.07	7.10	10.53	Chewelah . . .	2.21	9.58	Oakdale . . .	4.41	5.50	Lethbridge . . .	9.35
10.50	10.00	Oakdale . . .	11.48	6.51	11.44	Colville . . .	1.36	10.20	Garfield . . .	4.19	10.30	Ar. Calgary . . . Lv	6.55
11.15	10.25	Garfield . . .	11.24	6.32	12.20	Ar. Marcus . . . Lv	1.00	10.45	Ar. Palouse . . . Lv	4.00	6.25	Ar. Edmonton . . . Lv	12.10
11.32	10.40	Palouse . . .	11.06	6.15				11.20	Moscow . . .	3.30	9.50	Ar. Medicine Hat . . . Lv	5.45
12.03	11.11	Pullman . . .	10.35	5.45	1.50	Northport . . .	10.50				6.45	Ar. Moose Jaw . . . Lv	8.55
12.35	11.46	Moscow . . .	10.15	5.21	4.45	Ar. So. Nelson, B. C. Lv	8.00				8.10	Ar. Regina . . . Lv	7.20
1.30	12.55	Kendrick . . .	9.13	4.18	3.38	Grand Forks . . . m 10.00		Daily	Daily	Daily	6.00	Ar. Winnipeg . . . Lv	9.30
1.40	12.55	Julietta . . .	9.03	4.08				1.10	7.40	Lv. Spokane . . . Ar	10.15	5.40	
2.25	1.45	Ar. Lewiston . Lv	8.20	3.25				2.20	8.50	Ar. Coeur d'Alene . Lv	9.05	4.30	

2-6 Daily	4-4 Daily	NORTHERN PACIFIC East of Pasco	5-3 Daily	3-1 Daily	2-347 Daily	NORTHERN PACIFIC Walla Walla	348-1 Daily	2-5 Daily	4-3 Daily	4-1 Daily	NORTHERN PACIFIC West of Pasco	2-3 Daily	6-3 Daily	4-1 Daily
9.30	8.30	Lv. Portland . Ar	6.30	7.35	9.30	Lv. Portland . Ar	7.35				Lv. Portland . Ar	6.30	6.30	7.35
3.10	4.30	Lv. Pasco . Ar	11.55	9.10	4.25	Lv. Pasco . Ar	9.00	12.05	9.20	12.47	Lv. Pasco . Ar	4.00	2.50	4.23
4.08	5.25	Connell . . .	11.00	8.23	5.38	Eureka . . .	7.50	12.15	9.30		Kennewick . . .	2.40	4.14	
4.55	6.14	Lind . . .	10.23	7.39	6.45	Ar. Walla Walla . . . Lv	6.40	1.20	10.39		Prosser . . .	1.21	3.15	
5.26	6.45	Ritzville . . .	9.56	7.12	*12.15	Ar. Waiatburg . . . Lv	*2.32	2.05	11.27		Toppenish . . .	12.40	2.32	
6.03	7.26	Ar. Sprague . . Lv	9.22	6.36	*1.00	Ar. Dayton . . . Lv	*2.00	2.43	12.10	3.05	Ar. Yakima . . .	2.00	12.10	2.00
								3.51	1.36	4.11	Ar. Ellensburg . . . Lv	12.53	10.51	12.47



## To California THIS SUMMER

See the new, wonderful bridges across San Francisco Bay, and share in the myriad works of nature and man in the Golden State.



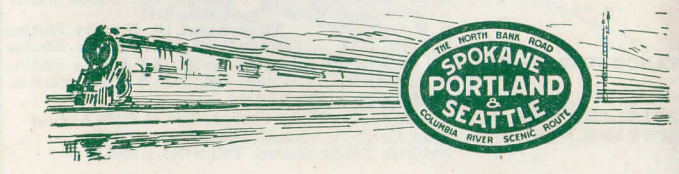
Excursion fares are in effect by the S. P. & S. Ry. every day to San Francisco, Los Angeles, San Diego, Santa Barbara, Del Monte, etc., with stopovers and liberal limits. Enjoy the delights of visits to Oregon and California.

S. P. & S. trains leave Spokane 8:30 A.M. and 9:45 P.M., and arrive Portland, Union Station, 6:30 P.M. and 7:35 A.M., connecting with Southern Pacific trains for California; schedules on page 8.

### ROUND TRIP FARES FROM SPOKANE

	Coach	Tourist	Standard
San Francisco . . . . .	\$36.75	\$41.35	\$50.60
Los Angeles . . . . .	48.35	54.40	68.00
Santa Barbara . . . . .	48.35	54.40	65.70
San Diego . . . . .	54.20	60.85	74.70

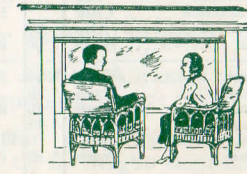
21 Day Return Limit.  
 Tickets are good for stop-overs within limit:  
 Coach tickets honored in coaches and reserved seat coaches only.  
 Tourist tickets in tourist sleeping cars, reserved seat coaches, or coaches;  
 standard tickets in standard sleeping cars or other equipment. Sleeping car, parlor car and reserved seat coach accommodations are at additional charges.  
 Fares for tickets with longer limits will be furnished by agents on request.  
 Round Trip fares from other stations at proportionate figures.



## DELIGHTFUL TRAIN TRIPS between PORTLAND and SPOKANE

### Along the Columbia and Snake Rivers and Through the Heart of the Cascade Range

The day express trains give passengers the pleasure of a rare panorama of plateau, river, mountain and forest scenery and Bonneville Dam, from coaches, or reserved seat coaches with individual chairs, wide windows and observation platforms which add greatly to the pleasure of the trip; seat fare fifty cents. Cafe service for the three meals at economy prices.



The night limited trains furnish every feature for comfort and pleasure in modern travel—Completely air-conditioned—observation club cars, with radio, barber, fountain, magazines, lounge chairs, etc., standard and latest type tourist sleeping cars and newest style coaches, with lounges for men and women, porter and free pillows.

Very low train fares are now in effect between Portland and Spokane—in coaches and reserved seat coaches only, one way \$7.50, round trip \$14.25; in reserved seat coaches, regular coaches and tourist sleeping cars, one way \$8.43, round trip \$16.05, with return limit 30 days; in standard sleeping cars and other equipment, one way \$11.24, round trip \$16.90 with return limit 30 days, and \$20.65 with return limit 6 months.

Berth and reserved seat charges are additional; see page 11.

