

OCTOBER, 1932



**Spokane, Portland and Seattle Ry.
Oregon Trunk Ry.
Oregon Electric Ry.
United Railways Co.**

TIME TABLES



Typical Dairy Farm in the Fertile Lower Columbia River Region near Clatskanie, Oregon.

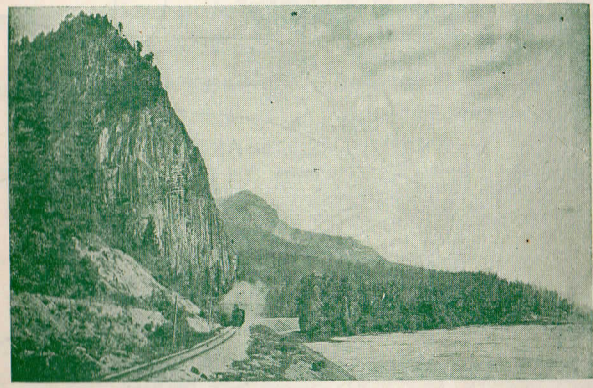
SUBJECT TO CHANGE WITHOUT NOTICE

OCTOBER, 1932



**Spokane, Portland and Seattle Ry.
Oregon Trunk Ry.
Oregon Electric Ry.
United Railways Co.**

TIME TABLES



Spokane, Portland & Seattle Railway train at Beacon Rock near Skamania, Washington

DESTROY PREVIOUS ISSUES

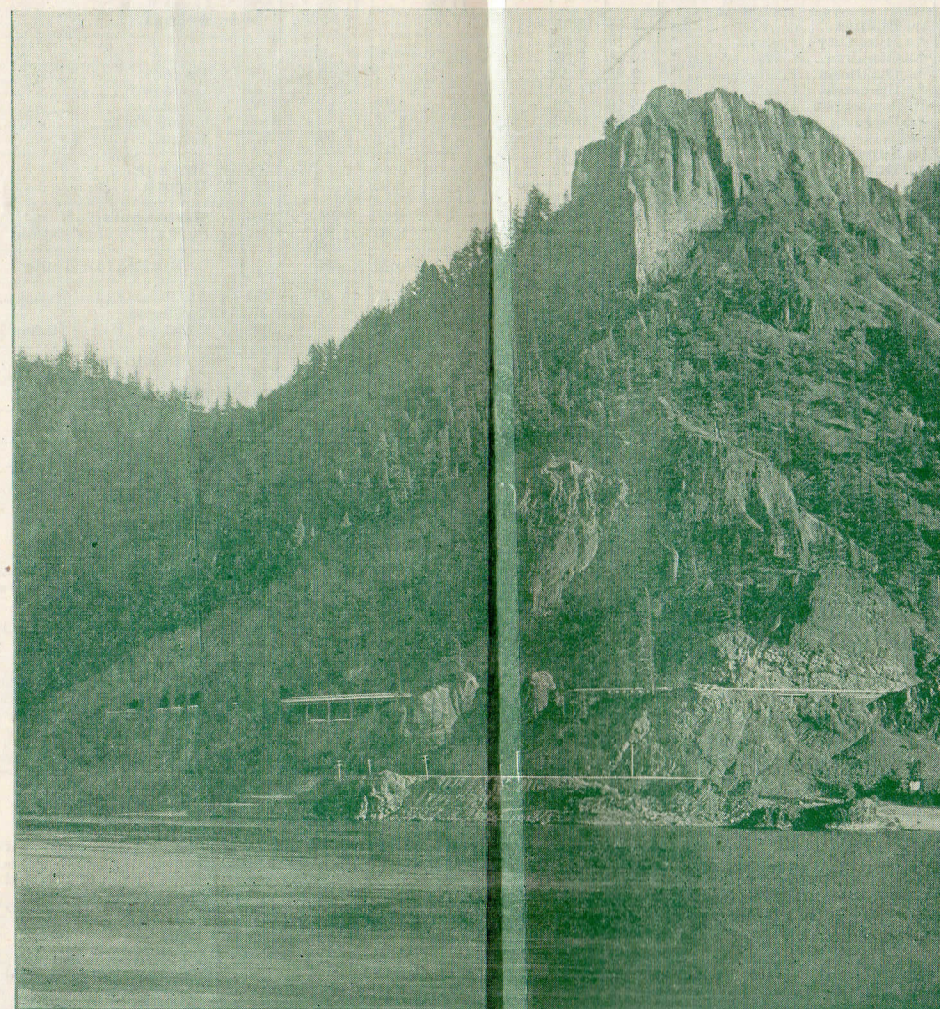
THROUGH TO CHICAGO

OVER THE
COLUMBIA RIVER SCENIC ROUTE
ON YOUR CHOICE OF TWO SUPERB TRAINS

The
Empire
Builder

Via
S. P. & S. - G. N.
C. B. & Q.

Leave Portland
9:30 p. m.
Arrive Chicago
third morning.



The
North Coast
Limited

Via
S. P. & S. - N. P.
C. B. & Q.

Leave Portland
9:30 p. m.
Arrive Chicago
third morning.



MITCHELL POINT AS VIEWED FROM TRAINS OF THE SPOKANE, PORTLAND & SEATTLE RAILWAY NEAR COOKS, WASHINGTON



SPOKANE, PORTLAND AND SEATTLE RAILWAY SYSTEM

TRAIN SERVICE—BETWEEN PORTLAND, SPOKANE AND THE EAST

VIA NORTHERN PACIFIC RY.

Table with columns for Eastbound, Read Down and Westbound, Read Up. Includes routes like Spokane, Portland and Seattle Railway, Northern Pacific Ry., and Burlington Route.

EQUIPMENT

EASTBOUND No. 2. North Coast Limited.—Observation club car with barber, valet, bath, fountain, library, radio, etc., and dining service, standard 10-section 1 compartment, 1 drawing room sleeping car, Portland to Chicago.

No. 4-4. Columbia River Express.—Observation parlor car (buffet) and coaches, Portland to Spokane; standard sleeping car, Spokane to Butte and Helena to St. Paul, dining service and coaches, Spokane to St. Paul; coach Garrison to Helena.

WESTBOUND

No. 1. North Coast Limited.—Observation club car with barber, valet, bath, fountain, library, radio, etc., and dining service, standard 10-section, 1 compartment, 1 drawing room sleeping car, Chicago to Portland.

No. 3-1. Alaskan—North Coast Limited.—Observation club car with barber, valet, bath, fountain, library, radio, etc., standard 12-section, 1 drawing room and tourist sleeping cars and coaches, Spokane to Portland.

VIA GREAT NORTHERN RY.

Table with columns for Eastbound, Read Down and Westbound, Read Up. Includes routes like Spokane, Portland and Seattle Railway, Great Northern Ry., and Burlington Route.

EQUIPMENT

EASTBOUND No. 2. Empire Builder.—Observation club car with barber, valet, bath, library, fountain, radio, etc., and dining service, standard 8-section 2-compartment 1 drawing room sleeping car, Portland to Chicago.

No. 2-28-4. Observation club car with barber, valet, bath, library, fountain, radio, etc., standard sleeping car and coaches Portland to Spokane. Standard 12-section, 1 drawing room sleeping car, dining car and coaches, Havre to St. Paul. (Coaches Spokane to Havre.)

No. 42. Standard sleeping car, Shelby to Kansas City via Lincoln; dining service and coaches.

WESTBOUND

No. 1. Empire Builder.—Observation club car with barber, valet, bath, library, fountain, radio, etc., and dining service, standard 8-section 2-compartment, 1 drawing room sleeping car, Chicago to Portland.

Standard and tourist sleeping cars and coaches Chicago to Spokane and Spokane to Portland.

No. 3-27-1. Standard 12-section 1 drawing room sleeping car, dining car and coaches, St. Paul to Havre. (Coaches Havre to Spokane.) Observation club car with barber, valet, bath, library, fountain, radio, etc., standard 12-section 1 drawing room sleeping car and coaches, Spokane to Portland.

No. 41.—Standard sleeping car Kansas City to Shelby via Lincoln; dining car service and coaches.

SPOKANE, PORTLAND AND SEATTLE RAILWAY SYSTEM

OREGON TRUNK RY.



PORTLAND - WISHRAM - PASCO - SPOKANE

Main table with columns for Eastbound, Read Down and Westbound, Read Up. Includes routes like Portland - Wishram - Pasco - Spokane, Portland - Redmond - Bend, and Portland - Lyle - Klickitat - Goldendale.

For equipment, Trains 1, 2, 3 and 4 see pages 3 and 4.

LOCAL STOPS ON TRAINS NOS. 1 AND 2

Under advance arrangements with agents Train No. 2 will stop at any station west of Pasco to receive passengers for Spokane, and at any station for passengers to points east of Spokane.

References: t Telegraph station. f Stops on signal. g No. 2 stops on signal to pick up passengers for east of Wishram and No. 1 to discharge passengers from east of Wishram.

daily except Sundays. m Stops to discharge passengers. n Stops on signal to discharge revenue passengers. o Stops to receive passengers for Portland and Vancouver.

EQUIPMENT—No. 8. Coaches and smoking cars, Portland to Wishram. Nos. 2-102 and 103-1, Standard sleeping car between Portland and Bend. Coaches and smoking cars Portland to Wishram and Wishram to Bend.

BAGGAGE IN SLEEPING CARS.—Hand baggage in sleeping cars is restricted to what may conveniently be placed in berth or seat occupied by passengers.

Prineville is reached by the City of Prineville Ry. Trains connect at Prineville Jct. with Oregon Trunk trains Nos. 102 and 103.



SPOKANE, PORTLAND AND SEATTLE RAILWAY SYSTEM

TRAINS BETWEEN PORTLAND - ST. HELENS - RAINIER - CLATSKANIE - ASTORIA - CLATSOP BEACH

Westbound, Read Down

Eastbound, Read Up

REFERENCES

b Passenger traffic between Warrenton, Flavel, Hammond and Fort Stevens is handled by stages, daily except Sunday...

c Stops to discharge passengers. d Stops to pick up passengers. e Stops to discharge passengers from Portland. f Stops on signal.

g Stops on flag to discharge passengers from Rainier and east.

h Stops to discharge passengers from Rainier or west.

i Telegraph office.

y Stops to pick up passengers for Portland.

Ar.—Arrive. Lv.—Leave.

M. W. F.—Mondays, Wednesday and Fridays.

RAIL EQUIPMENT

Trains Nos. 21 and 24 carry observation parlor cars, coaches and smoking cars between Portland, Astoria and Clatsop Beach points daily.

Parlor Car Fares: Between Portland and Astoria, Gearhart, Seaside, 50c per seat.

Meals: Buffet service is provided in parlor cars on Trains Nos. 21, 22, 23 and 24.

Table with columns: No. 61 M.W.F., No. 23 Daily, No. 21 Daily, Miles, Pacific Time, No. 22 Daily, No. 24 Daily, No. 62 M.W.F.

S.P. & S. STAGE SERVICE

BETWEEN PORTLAND AND SEASIDE, GEARHART, ASTORIA, CLATSKANIE, RAINIER, ST. HELENS, SCAPOOSE and VERNONIA

Leave Portland Stage Depot, Park and Yamhill Streets, for Seaside, Astoria, Clatskanie, Rainier (Longview) and St. Helens at 8:00 a. m. and 12:15 daily.

For St. Helens and Scappoose daily: 8:00, 10:15 a. m.; 12:15, 1:45, 4:15, 6:15 and 11:00 p. m. daily, and 9:45 p. m. Sundays.

For Vernonia daily 8:00 a. m. and 6:15 p. m.

Fast, Comfortable Motor Coaches—Low 1-Way and Round-Trip Fares. YAMHILL STAGE DEPOT Park and Yamhill Streets AT. 5171

S.P. & S. STAGES

NORTHWEST TRANSIT CO.

Motor stage leaves Longview for Ryderwood 4:10 p.m. daily, arriving Ryderwood at 5:25 p.m. Returning, leaves Ryderwood at 1:45 p.m., arriving Longview 3:00 p.m.

Note—Ferry leaves Goble for Kalama 10:20 a.m.; 1:30 p.m. and 7:55 p. m. Arrives Goble from Kalama 9:20 a. m.; 1:20 and 7:35 p.m. Fare 25 cents one way.

Note.—Bus leaves Rainier for Longview every other hour from 8:20 a. m. to 8:20 p. m. Arrives Rainier from Longview every other hour during same period.

CITY TICKET OFFICES

Spokane—Davenport Hotel—H. W. Shields, General Agent. C. J. Livingston, City Pass'r and Ticket Agt, Phone Main 3483. Portland—Consolidated Ticket Office, A. L. Arnold, Agent, Phone Bdy. 5631. Broadway and Morrison.

STATIONS—PORTLAND

Spokane, Portland and Seattle Ry. trains (except Nos. 61 and 62 to and from Vernonia) use Union Station. S. P. & S. Ry. trains Nos. 61 and 62 to and from Vernonia use Tenth and Hoyt Streets Station. Schedule page 11. Oregon Electric Ry. trains use Jefferson Street Station, Front and Jefferson Streets.

STATIONS—SPOKANE

S. P. & S. Ry. Trains Nos. 1 and 2 use Great Northern Station, and Nos. 3 and 4 use Northern Pacific Station.

TRAVELERS AID SERVICE



Representatives of the National Association of Travelers' Aid Societies are at many of the larger stations in the United States to serve travelers in difficulty and to assist those requiring protection when they arrive in a strange city.

SPOKANE, PORTLAND AND SEATTLE RAILWAY SYSTEM OREGON ELECTRIC RAILWAY



PORTLAND - SALEM - ALBANY - CORVALLIS - JUNCTION CITY EUGENE

From Portland, Read Down

To Portland, Read Up

Table with columns: b9 Daily, Ele-va-tion, Miles from Port-land, Pacific Time Oregon Electric Station Front and Jefferson Streets, Miles from Eu-gene, b12 Daily

i Connection by Bus at Albany. b Baggage handled. f Stops on signal.

At Your Service

Industries seeking location in the Pacific Northwest will find it to their advantage to consult the Spokane, Portland & Seattle Railway Industrial Department.

Atwater 9111

CONNECTIONS AT EUGENE COOS BAY POINTS

Table with columns: 334 Daily, Southern Pacific Lines, 333 Daily

Pacific Greyhound Lines Stages leave Marshfield for Coquille and Myrtle Point 7:40, 10:10 a.m., 4:20 p. m.; for Powers at 7:40 a. m.; for Bandon 7:40 a.m., 4:20 p.m.; for Crescent City 7:40 a.m.

LOW ROUND TRIPS

Between Portland and Seaside - Gearhart - Pacific Ocean.

SEASIDE \$3.55 GEARHART \$3.50 ASTORIA \$3.00

On Sale Daily—30 day return limit.

S. P. & S. Ry. Trains-Stages



Spokane, Portland & Seattle Railway Train—in the Heart of the Cascade Mountains near Bingen—White Salmon, Washington

ASK ABOUT THE LOW COST

PANAMA CANAL—RAIL-WATER TRIPS

Portland to New York—Spanish-American Countries, Colombia, Panama, Costa Rica, Nicaragua, El Salvador, Guatemala, Mexico, Los Angeles, San Francisco, Portland—Via S. P. & S. Ry. and Grace Line "Santa" Fleet. Full details, attractive literature, etc., upon application to agents and representatives of the

Spokane, Portland & Seattle Ry.

or R. H. CROZIER, General Pass. Agent, Portland, Oregon



SPOKANE, PORTLAND AND SEATTLE RAILWAY SYSTEM

PORTLAND - NORTH PLAINS - WILKESBORO - VERNONIA

Read Down			Read Up		
M. W. F.	Miles	S. P. & S. R. Y.	M. W. F.	Miles	S. P. & S. R. Y.
7.25	0.0	Lv. Portland	2.10	0.0	Ar. Portland
7.55	7.3	Ar. 10th and Hoyt Sts. Station	1.40	7.3	Lv. 10th and Hoyt Sts. Station
UNITED RAILWAYS					
7.55	7.3	Lv. Linnton	1.40	7.3	Ar. Linnton
8.15	11.7	Burlington	1.20	11.7	Burlington
8.28	15.5	Rockton	1.06	15.5	Rockton
8.31	16.2	Valle Vista	1.02	16.2	Valle Vista
8.35	17.1	Bowers Jet.	1.00	17.1	Bowers Jet.
8.36	17.6	Helvetia	12.53	17.6	Helvetia
8.39	19.1	Connell	12.50	19.1	Connell
8.41	20.2	Lincoln	12.48	20.2	Lincoln
8.50	21.9	North Plains	12.44	21.9	North Plains
8.52	23.2	Vadis	12.35	23.2	Vadis
8.54	23.8	Dersham	12.33	23.8	Dersham
9.00	25.5	Christie	12.26	25.5	Christie
9.05	26.5	Wilkesboro	12.25	26.5	Wilkesboro
9.10	27.5	Banks	12.18	27.5	Banks
9.14	29.4	Davies	12.13	29.4	Davies
9.16	29.9	Vernonia Company	12.11	29.9	Vernonia Company
9.18	31.1	Carstens	12.09	31.1	Carstens
9.25	31.8	Manning	12.05	31.8	Manning
9.28	34.6	Burton	11.47	34.6	Burton
9.50	38.8	Tophill	11.42	38.8	Tophill
9.57	41.6	Schmidlin	11.33	41.6	Schmidlin
10.05	42.9	Braun	11.30	42.9	Braun
10.08	44.2	Connacher	11.18	44.2	Connacher
10.12	46.4	McPherson	11.17	46.4	McPherson
10.14	46.7	Treborn	11.15	46.7	Treborn
10.25	48.6	Ar. Vernonia	11.10	48.6	Lv. Vernonia
No passenger service					
48.6 Lv. Vernonia			50.6 Poynter		
50.6 Poynter			53.2 Homewood		
53.2 Homewood			54.9 Early		
54.9 Early			57.0 Ar. Keasey		
57.0 Ar. Keasey			No passenger service		

Attend the
Pacific International Livestock Exposition,
Portland, Oregon

OCTOBER 15th to 22nd, 1932

Prize Winning Horses, Cattle, Hogs, Sheep, Goats,
Poultry and Pet Stock.
Manufacturers and Land Products Show.
Rodeo—Many other features daily.

Railway Express Agency, Inc.

The Railway Express Agency, Inc., operates on the Spokane, Portland & Seattle Ry., Oregon Electric and other principal lines in the United States, offering safe, speedy, nation-wide service. Through routes and fast schedules are maintained between all important points.

Prevent Forest Fires

A forest fire may be slow in starting, but when it does spread, it is sure to go

Prevent Forest Fires—It Pays

PORTLAND - PUGET SOUND - BRITISH COLUMBIA									
NORTH PACIFIC RY.—GREAT NORTHERN RY.—UNION PACIFIC SYSTEM					NORTH PACIFIC RY.—GREAT NORTHERN RY.—UNION PACIFIC SYSTEM				
Northbound—Lead Down					Southbound—Read Up				
Daily	Daily	Daily	Daily	Daily	All Trains Daily	Daily	Daily	Daily	Daily
11.30	11.15	4.30	1.00	8.35	Lv. Portland, Union Station	2.30	6.15	9.30	6.15
12.05	11.45	4.55	1.25	9.00	Lv. Vancouver, Wash.	1.55	5.42	9.05	5.55
1.04			2.05	9.48	Kalama	1.06	5.01		4.54
	12.47	5.48			Longview			8.10	4.16
1.26			2.20	10.06	Kelso	12.47	4.47		4.35
1.47			2.35	10.24	Castle Rock	12.29	4.31		4.15
				2.08	Ar. South Bend			3.50	
3.00	2.00	6.53	3.22	11.20	Ar. Chehalis	11.38	3.47	7.06	3.05
3.20	2.30	7.05	3.34	11.36	Lv. Centralia	11.28	3.39	6.57	3.10
				1.25	Ar. Aberdeen			4.33	
				1.40	Hoquiam			4.20	
5.05	4.50	8.20	4.57	1.04	Ar. Tacoma	9.50	2.10	5.40	12.40
6.45	6.30	9.30	6.15	2.20	Ar. Seattle	8.30	1.00	4.30	11.15
				6.00	Lv. Seattle			1.45	10.45
				6.57	Ar. Everett			12.43	9.45
				8.00	Bellingham			10.35	7.35
				10.15	Ar. Vancouver, B. C.			8.30	6.30

Light face figures denote A. M. time. Dark face figures denote P. M. time.

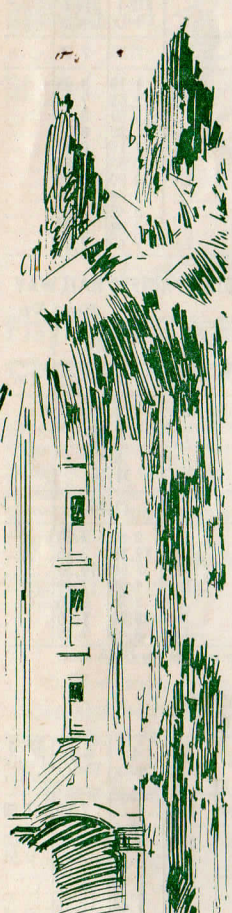
f/Stop on signal. Points north of Seattle via G. N. Ry.

SPOKANE, PORTLAND AND SEATTLE RAILWAY SYSTEM



CALIFORNIA

America's
Great
All-Year
Playground!



See the century-old Missions, the mammoth orange plantations, the movie colony, the golf courses, big cities, hotels, etc.

PLAN TO GO SOUTH NOW

Special Fares are in effect from Spokane on two splendid trains daily. Direct connections in Portland, Union Station, with Southern Pacific trains for California. Schedules on page 12.

Empire Builder-North Coast Limited 9:45 p.m. from G. N. Station. Columbia River Express 8:00 a.m. from N. P. Station.

Choice Snake, Columbia and Willamette River Scenery!



Pacific Steamship Company steamers leave Portland, Admiral Line Terminal, for San Francisco, Los Angeles and San Diego every Tues. at 5 P.M.

H. W. SHIELDS
General Agent

G. J. LIVINGSTON
City Passenger and Ticket Agent

Davenport Hotel Ticket Office

MAin 3483
Spokane, Washington



FARM OPPORTUNITIES

Through Washington, from Spokane west, livestock raising and wheat growing are the principal farm occupations, with extensive irrigated truck and fruit districts in the territory surrounding Pasco and Kennewick.

On the Columbia River—particularly at Bingen-White Salmon and Underwood—is a very specialized fruit district for the production of high-quality apples, pears and strawberries.

In Clark County, in addition to general farming and dairying, specialty tree crops are prunes and nuts.

Oregon produces many specialty crops. In the higher elevations of Central Oregon, in addition to livestock and turkey-raising; clover seed, Netted Gem potatoes and dairying, under irrigated conditions, are the principal occupations of the farmers.

The Willamette Valley, devoted to general farming, also produces small fruits, berries, tree fruits, vegetables, walnuts and filberts.

In the Lower Columbia region, flaxseed, mint, bulbs, honey, out-of-season vegetables and cranberries are the specialty crops, while dairying, under non-irrigated conditions, and poultry production, are the major enterprises.

For information regarding land or farm opportunities write to

KENNETH C. MILLER
Agricultural and Livestock Agent
313 Commerce Building, PORTLAND, OREGON

Spokane, Portland & Seattle Ry.

HAWAII

Offers Recreation—Rest—Romantic Appeal

Headed by luxury liners MARIPOSA, MONTEREY and MALOLO, the Matson Line and Lasso fleets provide a frequency of service and variety of fares to meet every requirement.

Inclusive tours with every detail arranged in advance can be enjoyed any time of the year. It's always Springtime in Hawaii! Total inclusive cost as low as \$293.50 for sea voyage (first class) and 7 days in Hawaii, touring the Island of Oahu and Volcano on Island of Hawaii.

Also low one-way and round-trip fares, tours and cruises to South Seas, New Zealand, Australia and Around the Pacific.

Ask your agent about folders and reservations on

Matson Line — Lasso Line
FROM SAN FRANCISCO FROM LOS ANGELES

Full information at 271 Pine Street, PORTLAND, OREGON or from agents and representatives of the

Spokane, Portland & Seattle Ry.



SPokane, PORTLAND AND SEATTLE RAILWAY SYSTEM

CONNECTIONS AT SPOKANE GREAT NORTHERN RAILWAY

Table with columns: Daily Ex.Su., Miles, Pacific Time, 255-1 Daily Ex.Su. Routes include Portland, Spokane, Deer Park, Loon Lake, Chewelah, Colville, Marcus, Northport, So. Nelson, B. C., Grand Forks, B. C., Curlow, Republic.

j Monday and Friday. k Monday. l Tuesday. m Tuesday and Saturday.

SPOKANE, COEUR D'ALENE & PALOUSE RY. CO.

Table with columns: Daily ex. Sat., 2-64 Daily, 67-1 Daily, 95 Daily ex. Sat. Routes include Portland, Spokane, Mt. Hope, Waverly, Spring Valley, Rosalia, Thornton, Steptoe, Colfax, Oakesdale, Garfield, Palouse, Palouse (W.I. & M. Ry.), Potlatch, Princeton, Harvard, Deary, Bovill (W.I. & M. Ry.), Moscow.

* Daily except Sunday.

SPOKANE, COEUR D'ALENE & PALOUSE RY. CO.

Table with columns: Daily, Daily, Daily, Daily. Routes include Portland, Spokane, Coeur d'Alene.

CONNECTIONS AT PORTLAND UNION PACIFIC SYSTEM

Table with columns: Read Down, No. 18 Daily, No. 20 Daily, No. 21 Daily, No. 17 Daily, Read Up. Routes include Portland, Hood River, The Dalles, Pendleton, Baker, Payette, Ontario, Nampa, Boise, Pocatello, Ogden, Salt Lake, Cheyenne, Denver, Kansas City, Omaha.

Light face figures denote A. M. time.

Dark face figures denote P. M. time.

CONNECTIONS AT SPOKANE NORTHERN PACIFIC RAILWAY

Table with columns: Read Down, 4-313 Daily, 2-311 Daily, Miles, Pacific Time, 312-1 Daily, 314-1 Daily, Read Up. Routes include Portland, Spokane, Marshall, Rosalia, Oakesdale, Garfield, Palouse, Pullman, Moscow, Kendrick, Juliaetta, Lewiston.

SPOKANE INTERNATIONAL RAILROAD-CANADIAN PACIFIC RAILWAY

Table with columns: Read Down, 2-2 Daily, Read Up, 1-1 Daily. Routes include Portland, Spokane (S. I. Ry.), Kingsgate (C. P. R.), Macleod, Lethbridge, Calgary, Edmonton, Medicine Hat, Swift Current, Moose Jaw, Regina, Brandon, Winnipeg.

* Except Sunday. Sundays arrives Edmonton 10:40 p.m.; leaves 12:15 a.m.

CONNECTIONS AT PASCO NORTHERN PACIFIC RAILWAY

Table with columns: 4-533 Daily Motor, 2-5 Daily, 4-3 Daily, 1 Daily, M., Main Line West, 2-3 Daily, 4 Daily, 6-3 Daily, 334-3 Daily Motor. Routes include Portland, Pasco, Kennewick, Prosser, Mabton, Toppenish, Yakima, Ellensburg.

Table with columns: 4-4 Daily, 6 Daily, M., Main Line East, 5-3 Daily, 3-1 Daily. Routes include Portland, Pasco, Connell, Lind, Ritzville, Sprague.

Table with columns: 2-347 Daily, M., 348-1 Daily. Routes include Portland, Pasco, Attala, Bureka, Walla Walla, Waitsburg, Dayton, Helix, Pendleton.

* Daily except Sunday. / Stop on signal.

SPokane, PORTLAND AND SEATTLE RAILWAY SYSTEM



Ask for copy of our illustrated Clatsop Beach Resort folder.

Play at SEASIDE or GEARHART Clatsop Beach, Pacific Ocean Popular All-Year Beach Resort.

Fine golf courses open to the public on payment of a small greens fee. Headquarters for riding, tennis, bathing, hiking, fishing, boating, mountain climbing, etc. Hotel Seaside at Seaside and the Gearhart Hotel and Ocean House at Gearhart furnish first class accommodations. In addition to these there are numerous apartments, courts, rooming houses and cottages.

Low Round Trips

BETWEEN PORTLAND AND SEASIDE-GEARHART

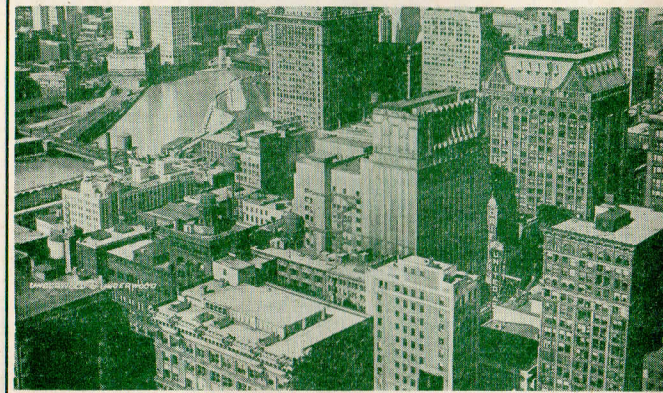
Table with columns: Seaside \$3.55, Gearhart \$3.50, Astoria \$3.00. Includes note: Go daily. 30 day return limit.

Good on trains or stages, making a fine combination trip possible.

Descriptive folders, full information, etc., on request to

R. H. CROZIER, General Passenger Agent Portland, Oregon

Spokane, Portland & Seattle Ry.



Air view of Chicago, great railroad center of the United States. Location of the Century of Progress International Exposition, June 1 to Nov. 1, 1933.

Sleeping and Parlor Car Fares INCLUDING SURCHARGES Subject to change without notice.

Large fare table with columns: BETWEEN AND, SEAT, PORTLAND (Standard Lower Berth, Compartment, Drawing room, Tourist Lower Berth), SPOKANE (Standard Lower Berth, Compartment, Drawing Room, Tourist Lower Berth). Lists various cities and their corresponding fares.

Freight Service

Route your freight shipments via the Spokane, Portland and Seattle Railway for fast and dependable service-between Portland, Astoria, Spokane, Yakima, Walla Walla, Pendleton, Lewiston, Bend, and all points East.

Let Us Handle Your Transportation Problems

