



**Spokane, Portland and Seattle Ry.
Oregon Trunk Ry.
Oregon Electric Ry.
United Railways Co.**

TIME TABLES



Angel's Terrace, Mammoth Hot Springs, Yellowstone National Park

SUBJECT TO CHANGE WITHOUT NOTICE



**Spokane, Portland and Seattle Ry.
Oregon Trunk Ry.
Oregon Electric Ry.
United Railways Co.**

TIME TABLES



Blackfoot Indians at Glacier National Park

DESTROY PREVIOUS ISSUES

THROUGH to CHICAGO

Over the Columbia River Scenic Route
On your choice of Two Superb Trains

VACATION FARES TO THE EAST LOWER THIS SUMMER

ASK FOR PARTICULARS

The North Coast Limited

Via S. P. & S. - N. P. - C. B. & Q.

Leave Portland 9:30 p. m.

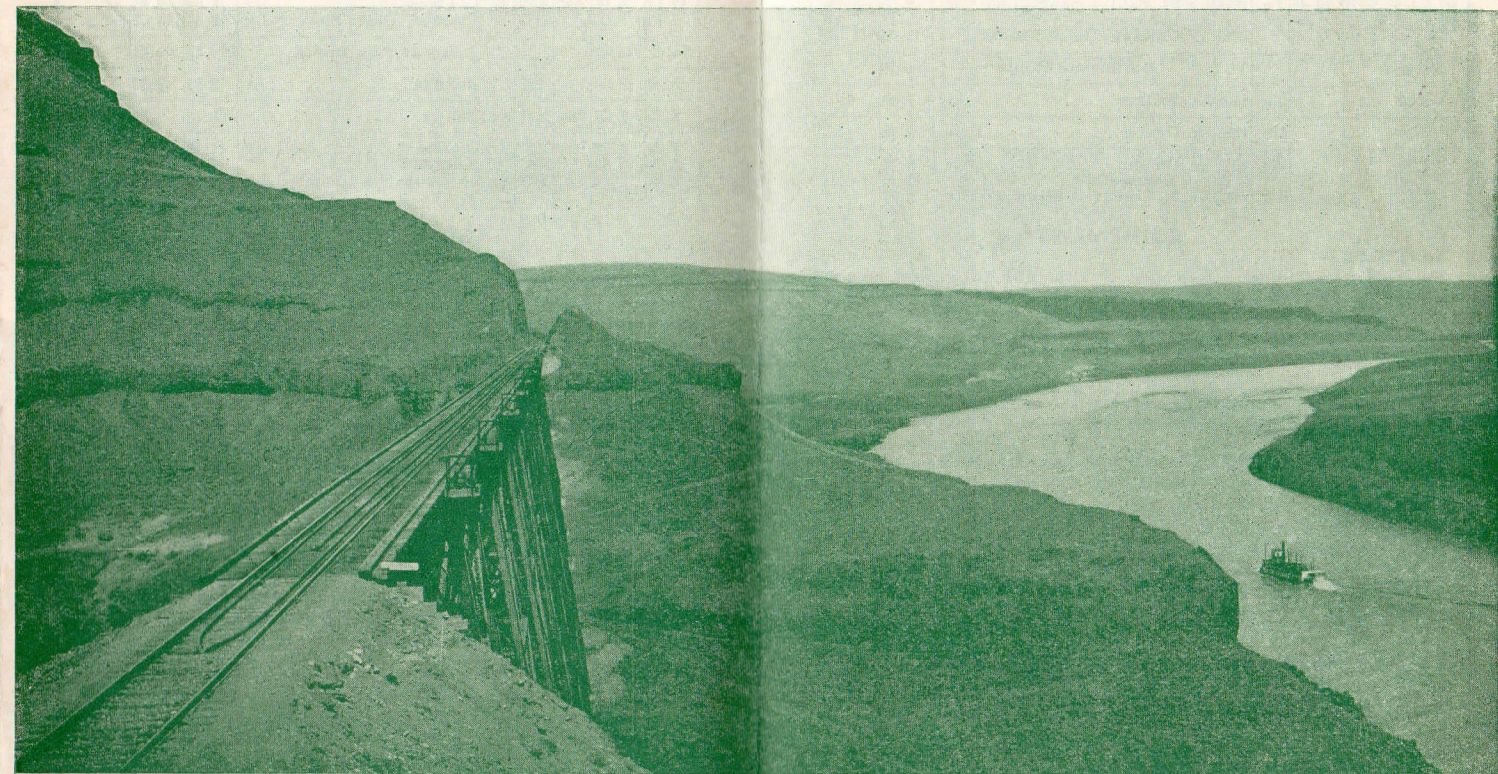
Arrive Chicago third morning.

The Empire Builder

Via S. P. & S. - G. N. - C. B. & Q.

Leave Portland 9:30 p. m.

Arrive Chicago third morning.



SPOKANE, PORTLAND & SEATTLE RAILWAY TRACKS ALONG THE PRECIPITOUS WALLS OF THE SNAKE RIVER WEST OF SPOKANE, WASHINGTON



SPOKANE, PORTLAND AND SEATTLE RAILWAY SYSTEM

TRAIN SERVICE—BETWEEN PORTLAND, SPOKANE AND THE EAST

VIA GREAT NORTHERN RY.

Table with columns for Eastbound, Read Down and Westbound, Read Up. Includes train numbers, days, and times for routes like Spokane, Portland and Seattle Railway and Great Northern Ry.

VIA NORTHERN PACIFIC RY.

Table with columns for Eastbound, Read Down and Westbound, Read Up. Includes train numbers, days, and times for routes like Spokane, Portland and Seattle Railway and Northern Pacific Ry.

EQUIPMENT

Text describing equipment for various train services, including observation club cars, sleeping cars, and dining cars.

EQUIPMENT

Text describing equipment for various train services, including observation club cars, sleeping cars, and dining cars.

SPOKANE, PORTLAND AND SEATTLE RAILWAY SYSTEM OREGON TRUNK RY.



PORTLAND - WISHRAM - PASCO - SPOKANE

Table showing train schedules for Portland - Wishram - Pasco - Spokane. Includes columns for No. 8, No. 4, No. 2, No. 1, and No. 3, with times and elevations.

Portland - Redmond - Bend

Table showing train schedules for Portland - Redmond - Bend. Includes columns for No. 2, No. 102, and No. 103, with times and elevations.

For equipment, Trains 1, 2, 3 and 4 see pages 3 and 4.

Portland - Lyle - Klickitat - Goldendale

Table showing train schedules for Portland - Lyle - Klickitat - Goldendale. Includes columns for No. 8-220, No. 221, and No. 222, with times and elevations.

Ex. Sun. denotes Daily except Sundays.

Ex. Mon. denotes Daily except Monday.

MEALS—Nos. 3 and 4 cafe, parlor observation car service. Nos. 1 and 2, light buffet lunch in club cars.

LOCAL STOPS ON TRAINS NOS. 1 AND 2

Under advance arrangements with agents Train No. 2 will stop at any station west of Pasco to receive passengers for Spokane, and at any station for passengers to points east of Spokane.

References: t Telegraph station. f Stops on signal. g No. 2 stops on signal to pick up passengers for east of Wishram and No. 1 to discharge passengers from east of Wishram.

daily except Sundays. m Stops to discharge passengers. † Stops to receive passengers for Portland and Vancouver.

EQUIPMENT—No. 8. Coaches and smoking cars, Portland to Wishram. Nos. 2-102 and 103-1, Standard sleeping car between Portland and Bend. Coaches and smoking cars Portland to Wishram and Wishram to Bend.

BAGGAGE IN SLEEPING CARS.—Hand baggage in sleeping cars is restricted to what may conveniently be placed in berth or seat occupied by passengers. All baggage should be marked with name and permanent address of owner.



SPOKANE, PORTLAND AND SEATTLE RAILWAY SYSTEM

TRAINS BETWEEN PORTLAND - ST. HELENS - RAINIER - CLATSKANIE - ASTORIA - CLATSOP BEACH

Westbound, Read Down

Eastbound, Read Up

Table with columns for train numbers (No. 61, No. 31, No. 23, No. 21, Miles, Pacific Time, No. 22, No. 24, No. 30, No. 62), stations (Lv. PORTLAND, Union Sta., 10th and Hoyt Streets Station, etc.), and times.

REFERENCES
a Stops on flag to pick up passengers for Astoria and west.
b Passenger traffic between Warrenton, Flavel, Hammond and Fort Stevens is handled by stages, daily except Sunday, making connection with Trains Nos. 21 and 24. Rail tickets accepted.
c Stops to discharge passengers.
d Stops to pick up passengers.
e Stops to discharge passengers from Portland.
f Stops on signal.
g Stops on flag to discharge passengers from Rainier and east.
h Stops to discharge passengers from Rainier or west.
k Stops on signal to discharge passengers from east of Astoria.
m Stops on flag to pick up passengers for scheduled stops Astoria and east.
n Stops to discharge passengers from west of Astoria.
t Telegraph office.
y Stops to pick up passengers for Portland.
Ar.—Arrive. Lv.—Leave.
Sats.—Saturdays.
Suns.—Sundays.

RAIL EQUIPMENT
Trains Nos. 21, 24, 30 and 31 carry observation parlor cars, coaches and smoking cars between Portland, Astoria and Clatsop Beach points daily. No. 23 parlor car Fridays, Saturdays and Sundays. No. 22 Saturdays, Sundays and Mondays.
Other trains, coaches and smoking cars.
Parlor Car Fares: Between Portland and Astoria, Gearhart, Seaside, 50c per seat.
Meals: Buffet service is provided in parlor cars on Trains Nos. 21, 22, 23 and 24.
NORTHWEST TRANSIT CO.
Motor stages leave Longview for Ryderwood 9:30 a. m. daily, and 4:10 p. m. daily except Sundays and 9:00 p. m. Sundays and holidays. Arrive Longview from Ryderwood 9:45 a. m. daily; and 3:45 p. m. daily except Sundays and 7:00 p. m. Sundays.
Note.—Ferry leaves Goble for Kalama 10:20 a. m.; 1:30 p. m. and 6:30 p. m. Arrives Goble from Kalama 9:20 a. m.; 1:30 and 6:20 p. m. Fare 25 cents one way.
Note.—Bus leaves Rainier for Longview every other hour from 8:20 a. m. to 8:20 p. m. Arrives Rainier from Longview every other hour during same period.

CITY TICKET OFFICES
Spokane—Davenport Hotel—H. W. Shields, General Agent. C. J. Livingston, City Pass' and Ticket Agt, Phone Main 3483.
Portland—Consolidated Ticket Office, A. L. Arnold, Agent, Phone Bdy. 5631. Broadway and Morrison.
PORTLAND STATIONS
Spokane, Portland and Seattle Ry. trains (except Nos. 61 and 62 to and from Vernonia) use Union Station.
S. P. & S. Ry. trains Nos. 61 and 62 to and from Vernonia use Tenth and Hoyt Streets Station. Schedule page 11.
Oregon Electric Ry. trains use Jefferson Street Station, Front and Jefferson Streets.
SPOKANE STATIONS
S. P. & S. Ry. Trains Nos. 1 and 2 use Great Northern Station, and Nos. 3 and 4 use Northern Pacific Station.

S. P. & S. STAGES

BETWEEN PORTLAND AND SEASIDE, GEARHART, ASTORIA, CLATSKANIE, RAINIER, ST. HELENS, SCAPOOSE and VERNONIA

Leave Portland Stage Depot, Park and Yamhill Streets, for Seaside, Astoria, Clatskanie, Rainier (Longview) and St. Helens at 8:00 a. m., 12:15 and 4:15 p. m. daily.

For Rainier daily 8:00 a. m., 12:15, 4:15, 5:15 p. m.
For St. Helens and Scappoose daily: 8:00, 10:45 a. m.; 12:15, 1:45, 4:15, 5:15; 6:15, and 11:05 p. m. daily and 9:45 p. m. Sundays.

For Vernonia daily 8:00 a. m. and 6:15 p. m.

Fast, Comfortable Motor Coaches—Low Fares

YAMHILL STAGE DEPOT Park and Yamhill . AT. 5171

S. P. & S. STAGES

TRAVELERS' AID SERVICE
Representatives of the National Association of Travelers' Aid Societies are at many of the larger stations in the United States, to serve travelers in difficulty and to assist those requiring protection when they arrive in a strange city. Those in need of such service should inquire of station employes for a Travelers' Aid Service representative.



SPOKANE, PORTLAND AND SEATTLE RAILWAY SYSTEM OREGON ELECTRIC RAILWAY



10th Olympiad, American Legion Convention and other Important Events of 1932

Reduced round-trip fares will be in effect for all of the following events. Communicate with agents or representatives of the Spokane, Portland & Seattle Railway System for full particulars.

PORTLAND, ORE.

National Convention of American Legion, American Legion Auxiliary, 18th Engineers, 91st Division, Society of 40 and 8, U. S. Naval Veterans Reunion—Sept. 12, 15.

Head Camp Session Woodmen of the World—June 20, 27.

Pacific Northwest Golf Association Tournament—June 27-July 2.

North Pacific Sanger-Bund—July 21, 24.

Pacific International Livestock Exposition—Oct. 22-29.

SALEM, ORE.

Oregon State Fair—Sept. 25, Oct. 1.

SAN FRANCISCO, CAL.

Nobles of the Mystic Shrine—July 26, 27, 28.

LOS ANGELES, CAL.

10th Olympiad—July 30, Aug. 14.

Lions' International Convention—July 19, 22.

American Bankers' Association—Oct. 3, 6.

National Federation of Men's Bible Classes—July 21, 24.

National Editorial Association Convention—July 18, 24.

CORONADO BEACH, CAL.

Western Conference of the Equitable Life Assurance Society of the United States—Oct. 3, 5.

CONNECTIONS AT BEND FOR KLAMATH FALLS

G. N. Mixed Train Service operated on irregular schedules between Bend and Klamath Falls.

PORTLAND - SALEM - ALBANY - CORVALLIS - HARRISBURG JUNCTION CITY - EUGENE

Table with columns for train numbers (11, b9, 10, b12), stations (Lv. PORTLAND, Jefferson Street Station, Garden Home, etc.), and times.

Additional Local Trains leave Portland for Tualatin at 5:15, 6:45 a. m.; 1:25 (Saturdays), 3:40 and 5:40 p. m. For Garden Home 6:00 and 10:40 a. m. (Saturdays) except Sundays—all others daily, except as noted. (x denotes daily except Sundays—all others daily except as noted). (Sats.—Saturdays.)

PORTLAND - BEAVERTON - ORENCO - HILLSBORO - FOREST GROVE

Table with columns for train numbers (b11-37, b35, 33, 34, b36, b38), stations (Lv. PORTLAND, Jefferson St. Station, Garden Home, etc.), and times.

Ex. Sun.—Except Sunday.

CONNECTIONS AT EUGENE COOS BAY POINTS

Table with columns for train numbers (334 Daily, 333 Daily), stations (Lv. Eugene, Noti, Mapleton, etc.), and times.

Pacific Greyhound Lines Stages leave Marshfield for Coquille and Myrtle Point 7:35, 10:00 a. m., 5:40 p. m. for Powers at 7:35 a. m., 5:40 p. m.; for Bandon 7:35, 6:40 p. m.; for Crescent City 7:35 a. m.



SPOKANE, PORTLAND AND SEATTLE RAILWAY SYSTEM

PORTLAND - NORTH PLAINS - WILKESBORO - VERNONIA

Read Down		Miles		S. P. & S. RY.		Read Up	
61	ex. Sun.			Lv.	Ar.	92	ex. Sun.
6.15	0.0			Lv. Portland	Ar. 10th and Hoyt Sta. Station	1.25	
6.45	7.3			Ar. Linnton	Lv. 12.55		
UNITED RAILWAYS							
6.45	7.3			Lv. Linnton	Ar. 12.55		
7.05	11.7			Burlington	12.35		
7.18	15.5			Rocketon	12.21		
7.21	16.2			Valle Vista	12.17		
7.25	17.1			Bowers Jct.	12.15		
7.26	17.6			Helvetia	12.08		
7.29	19.1			Connell	12.05		
7.31	20.2			Lincoln	12.03		
7.40	21.9			North Plains	11.59		
7.43	23.2			Vadis	11.50		
7.44	23.8			Dersham	11.48		
7.50	25.5			Christie	11.41		
7.55	26.5			Wilkesboro	11.40		
8.00	27.5			Banks	11.33		
8.04	29.4			Davies	11.28		
8.06	29.9			Vernonia Company	11.26		
8.08	31.1			Carstens	11.24		
8.15	31.8			Manning	11.20		
8.18	34.6			Buxton	11.02		
8.40	38.8			Tophill	10.57		
8.47	41.6			Schmidlin	10.48		
8.55	42.9			Braun	10.45		
8.58	44.2			Connacher	10.33		
9.02	46.4			McPherson	10.32		
9.04	46.7			Trehorn	10.31		
9.15	48.6			Ar. Vernonia	10.25		
Stage 36							
9.30	9.15	48.6		Lv. Vernonia	Ar. 10.25	11.40	
		50.6		Poynter			
		53.2		Homewood			
		54.9		Early			
	9.40	57.0		Ar. Keasey	10.00	11.15	

Stop on Signal. Telegraph Station.
 Ex. Sun. & Thur.—Except Sundays and Thursdays.
 Connection by stage except Thursdays and Sundays.

ASK ABOUT THE LOW COST
PANAMA CANAL—RAIL-WATER TRIPS
 Portland to New York—Spanish-American Countries, Colombia, Panama, Costa Rica, Nicaragua, El Salvador, Guatemala, Mexico, Los Angeles, San Francisco, Portland—Via S. P. & S. Ry. and Grace Line "Santa" Fleet. Full details, attractive literature, etc., upon application to agents and representatives of the
Spokane, Portland & Seattle Ry.
 or R. H. CROZIER, General Pass. Agent, Portland, Oregon

Railway Express Agency, Inc.

The Railway Express Agency, Inc., operates on the Spokane, Portland & Seattle Ry., Oregon Electric and other principal lines in the United States, offering safe, speedy, nation-wide service. Through routes and fast schedules are maintained between all important points.

Prevent Forest Fires

A forest fire may be slow in starting, but when it does spread, it is sure to go

Prevent Forest Fires—It Pays

CONNECTIONS AT PORTLAND

SOUTHERN PACIFIC LINES					
Southbound, Read Down			Northbound, Read Up		
17	329	15	7-5	7	Mi.
9.50	8.10	7.15	8.00	8.00	0.0
11.37	10.20	9.12	9.57	9.57	52.8
12.16	11.19	9.54	10.40	10.40	80.1
					123.7
1.25	12.52	11.10	2.11	12.01	
7.00		4.55	7.20		
	1.46			12.41	144.5
	4.10			2.18	198.4
	8.07			5.45	237.1
	9.30			6.35	323.2
	10.00			7.00	341.9
				4.45	6
5.55		5.05	7.32	7.32	683.2
6.20		7.48	9.20	9.20	767.5
6.50		8.15	9.50	9.50	771.0
9.15		8.45	10.25	10.25	

No. 7 and 8. The Shasta. Standard sleeping cars, coaches and cafe lounge car Medford.
No. 329 and 330-16. Oregonian. Standard drawing room sleepers, cafe coach car and coaches Ashland and Portland. Standard Sleeper Portland-Marshfield via Eugene.
No. 15 and 16. West Coast. Observation, standard drawing-room compt. and tourist sleepers, dining car and coaches to Los Angeles. (Lunch car between Portland and Sacramento). Standard sleeper between San Francisco and Portland via Klamath Falls.
No. 17 and 18. Cascade. Observation, Club (barber, valet, ladies' maid, showers), standard sleepers, dining car. Extra fare (\$3) limited to and from San Francisco, standard sleeper, Portland . Los Angeles via Oakland Pier and Train 76 via Klamath Falls. Coach between Portland and Eugene—no extra fare.
No. 5 and 6. Klamath. Lounge car, standard and tourist sleepers, coaches, Portland to San Francisco, diner and lunch car.

COAST LINE					
Daily Trains					
70	76	78	72	M.	
8.15	8.00	6.45	8.00	0	Lv San Francisco Ar
9.20	9.05	7.55	9.02	46	Ar San Jose Lv
		10.26		124	Ar Del Monte Lv
1.50		12.10		216	Ar Paso Robles Lv
3.30	2.35	2.35	2.25	252	Ar San Luis Obispo Lv
7.20	5.50	5.00	6.25	370	Ar Santa Barbara Lv
10.40	9.15	8.15	8.30	470	Ar Los Angeles Lv

Daylight Limited leaves San Francisco 8:00 a.m., arrives Los Angeles 8:40 p.m.

VALLEY LINE					
Daily Trains					
58	26	15-60	56	52	M.
11.40	6.00		11.40	8.00	0
12.10	6.25		12.05	8.25	0
			5.45		0
6.35	11.30	11.15	6.30	1.45	205
2.10	2.10	11.35	4.25	313	Ar Bakersfield Lv
8.45	8.45	7.00	10.25	484	Ar Los Angeles Lv

PORTLAND - PUGET SOUND - BRITISH COLUMBIA

NORTHERN PACIFIC RY.—GREAT NORTHERN RY.—UNION PACIFIC SYSTEM					
Northbound—Lead Down			Southbound—Read Up		
Daily	Daily	Daily	Daily	Daily	Daily
11.30	11.15	4.30	11.15	8.35	
12.05	11.45	4.55	11.40	9.00	
1.04			12.23	9.48	
	12.47	5.48			
1.26			12.39	10.06	
1.47			12.54	10.24	
				2.08	
3.00	2.00	6.55	1.45	11.20	
3.20	2.30	7.02	1.58	11.36	
				1.25	
				1.40	
5.05	4.50	8.20	3.24	1.04	
6.45	6.30	9.30	4.46	2.20	
8.05				5.00	
9.15				5.57	
11.35				8.00	
2.00				10.15	

Light face figures denote A. M. time. Dark face figures denote P. M. time. / Stop on signal. Points north of Seattle via G. N. Ry.

SPOKANE, PORTLAND AND SEATTLE RAILWAY SYSTEM



Play at....

SEASIDE or GEARHART

Clatsop Beach Pacific Ocean

POPULAR ALL-YEAR BEACH RESORTS

Fine golf courses open to the public on payment of a small greens fee. Headquarters for riding, tennis, bathing, hiking, fishing, boating, mountain climbing, etc. Hotel Seaside at Seaside and the Gearhart Hotel and Ocean House at Gearhart furnish first class accommodations. In addition to these there are numerous apartments, courts, rooming houses and cottages.

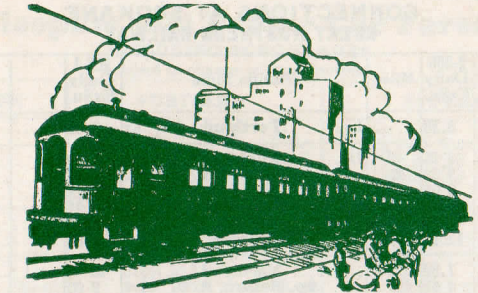
Low Round Trips
 BETWEEN PORTLAND AND SEASIDE—GEARHART
\$3.00 Week-Ends Return limit Mondays. \$4.00 daily, long return limit. Good on trains or stages, making a fine combination trip possible. Low 30-day round trips in effect—Seaside \$3.55, Astoria \$3.00 and Gearhart \$3.50.

Cascade Mountain Region
 Bingen-White Salmon, Government Springs, in the heart of the Cascades, and Bend on the Central Oregon plateau, elevation 3600 feet, are fine health resorts.

Ask about hikes to Mt. Adams, Beacon Rock, Blockhouse near Cascades, Crooked River, Deschutes and Wind River Canyons.

Descriptive folders, full information, etc., on request to
 R. H. CROZIER, General Passenger Agent
 Portland, Oregon

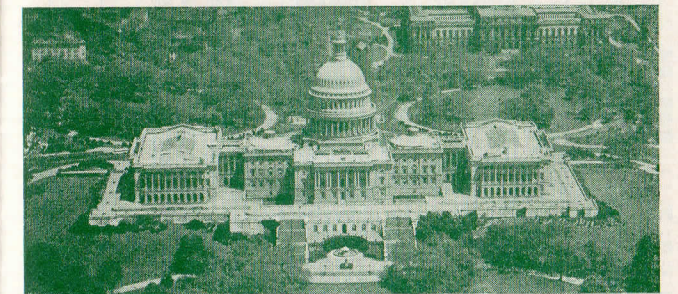
Spokane, Portland & Seattle Railway



OREGON ELECTRIC RAILWAY

Willamette Valley Route

Trains leave Portland, Front and Jefferson Streets, for Salem, Albany, Corvallis and Eugene at 8:15 a. m. daily; additional train for Salem at 6:15 p. m.; for Tualatin at 5:15 a. m. and 5:40 p. m. daily; 6:55 a. m. and 3:40 p. m. daily except Sundays; 1:30 p. m. Saturdays; for Orenco, Hillsboro and Forest Grove at 10:40 a. m.; for Orenco at 6:15 p. m. daily and 6:00 a. m. daily except Sundays. Oregon Electric Railway Station at Portland is at Front and Jefferson Streets. Phone Atwater 9111.



Capitol at Washington, D. C. Vacation Fares are lower this Summer. See page 22 for Example Fares.

HAWAII

Offers Recreation—Rest—Romantic Appeal
 n Headed by the luxury liners MARIPOSA and MALOLO, also the new MONTEREY which will make her maiden voyage in June, the Matson Line and Lasso fleets provide a frequency of service and variety of fares to meet every requirement.
 Inclusive tours with every detail arranged in advance can be enjoyed any time of the year. It's always Springtime in Hawaii! Total inclusive cost as low as \$293.50 for sea voyage (first class) and 7 days in Hawaii, touring the Island of Oahu and Volcano on Island of Hawaii.
 Also low one-way and round-trip fares, tours and cruises to South Seas, New Zealand, Australia and Around the Pacific.

Ask your agent about folders and reservations on
Matson Line — Lasso Line
 FROM SAN FRANCISCO FROM LOS ANGELES

Full information at 271 Pine Street, PORTLAND, OREGON
 or from agents and representatives of the
Spokane, Portland & Seattle Railway



SPOKANE, PORTLAND AND SEATTLE RAILWAY SYSTEM

CONNECTIONS AT SPOKANE GREAT NORTHERN RAILWAY

Table with columns for Miles, Pacific Time, and 256-1 Daily ExSu. Lists routes to Portland, Spokane, Deer Park, Loon Lake, Chewelah, Colville, Marcus, Northport, So. Nelson, B. C., Grand Forks, B. C., Curlew, and Republic.

CONNECTIONS AT SPOKANE NORTHERN PACIFIC RAILWAY

Table with columns for Read Down (4-313 Daily, 2-311 Daily) and Read Up (312-1 Daily, 314-1 Daily). Lists routes to Portland, Spokane, Marshall, Rosalia, Oakesdale, Garfield, Palouse, Pullman, Moscow, Kendrick, Juliaetta, and Lewiston.

SPOKANE INTERNATIONAL RAILROAD—CANADIAN PACIFIC RAILWAY

Table with columns for Read Down (2-2 Daily) and Read Up (1-1 Daily). Lists routes to Portland, Spokane (S. I. Ry.), Kingsgate (C. P. R.), Macleod, Lethbridge, Calgary, Edmonton, Medicine Hat, and Winnipeg.

* Except Sunday. Sundays arrives Edmonton 9:10 p.m.; leaves 8:00 a.m.

CONNECTIONS AT PASCO NORTHERN PACIFIC RAILWAY

Table with columns for 4-333 Daily Motor, 2-5 Daily, 4-3 Daily, 1 Daily, M., Main Line West, 2-3 Daily, 4 Daily, 6-3 Daily, 334-3 Daily Motor. Lists routes to Portland, Pasco, Kennewick, Prosser, Mabton, Toppenish, Yakima, and Ellensburg.

CONNECTIONS AT PORTLAND UNION PACIFIC SYSTEM

Table with columns for Read Down (No. 18 Daily, No. 20 Daily) and Read Up (No. 21 Daily, No. 17 Daily). Lists routes to Portland, Hood River, The Dalles, Pendleton, Baker, Payette, Ontario, Nampa, Boise, Pocatello, Ogden, Salt Lake, Cheyenne, Denver, Kansas City, and Omaha.

Light face figures denote A. M. time.

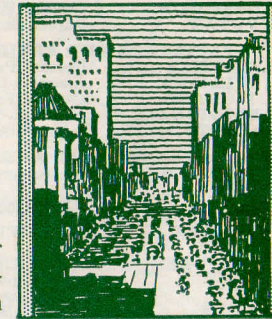
Dark face figures denote P. M. time.

SPOKANE, PORTLAND AND SEATTLE RAILWAY SYSTEM



CALIFORNIA

Pleasure Capital of America



10th OLYMPIAD July 30 to Aug. 14 LOS ANGELES

Noted for its famous all-year climate, its large cities, metropolitan hotels, ancient Spanish missions, Hollywood movie colony, marvelous sea bathing, golf courses and orange groves—all set in scenes of historical interest and scenic grandeur.

Plan to Go South Now

Special Fares Are in Effect From Spokane via Spokane, Portland & Seattle Ry.

on two splendid trains daily. Direct connections in Portland Union Station for California. Schedules on page 12 North Coast Limited—Empire Builder 9:45 p.m. from G. N. Station. Columbia River Express 8:00 a.m. from N. P. Station.

Pacific Steamship Company steamers leave Portland Admiral Line Terminal for San Francisco, Los Angeles and San Diego every Tuesday at 5 P.M.

H. W. SHIELDS, General Agent C. J. LIVINGSTON, City Passenger and Ticket Agent

DAVENPORT HOTEL TICKET OFFICE

MAIN 3483

Spokane, Portland & Seattle Railway



Sleeping and Parlor Car Fares INCLUDING SURCHARGES Subject to change without notice.

Large table with columns for BETWEEN AND, PORTLAND, and SPOKANE. Rows list various cities like Astoria, Atlanta, Baltimore, Bend, Billings, Blgen-Wh Salm, Boston, Boreman, Butte, Camas, Chicago, Cleveland, Denver, Detroit, Duluth, Fargo, Gardiner, Gearhart, Glacier Park, Granddalles, Great Falls, Havre, Helena, Indianapolis, Jacksonvile, Kansas City, Livingston, Los Angeles, Louisville, Lyle, Minneapolis, Missoula, Mobile, Montreal, New Orleans, New York, Oakland, Omaha, Pasco, Philadelphia, Pittsburg, Portland, Portland, St. Louis, St. Paul, Sacramento, San Antonio, San Francisco, Seaside, Spokane, Stevenson, Vancouver, Washington, and Wishram. Columns show fares for Standard Lower Berth, Compartment, Drawing room, Tourist Lower Berth, and other services.

Through cars not operated in all trains; fare applies for continuous trip via direct connections. The fare for a section is the combined fare of an upper and a lower berth. The fare for an upper berth is 80% of the lower berth fare. Single occupancy of one section is lower berth rate plus 40%. A compartment is a private room with lower and upper berths and toilet; a drawing room has a divan berth in addition. Occupancy of a drawing room requires two adult rail tickets, or their equivalent. For a compartment 1 1/2 tickets are required.

Freight Service

Route your freight shipments via the Spokane, Portland and Seattle Railway for fast and dependable service—between Portland, Astoria, Spokane, Yakima, Walla Walla, Pendleton, Lewiston, Bend, and all points East.

Let Us Handle Your Transportation Problems

STAGE AND BOAT CONNECTIONS

To points in Oregon and Washington reached from stations on the Spokane, Portland and Seattle Ry. east of Portland and Oregon Trunk Ry.

Destination	From	Conveyance	Days	Time	Fare	Free Baggage Lbs.
Oregon:						
*Arlington	Roosevelt	Ferry	Daily	Frequent	\$0.25	Hand
		During daylight hours				
Ashwood	Madras	Auto Stage	Ex. Sun.	7:00 AM	2.50	Hand
Burns	Bend	Auto Stage	Daily	9:00 AM	7.50	Hand
Chiloquin	Bend	See Schedu	le on page 9			
Crescent	Bend	See Schedu	le on page 9			
Criterion	Maupin	Auto Stage	Tu., Fri.	9:30 AM	2.00	Hand
Fife	Prineville	Auto Stage	Mo., Th.	7:30 AM	4.50	Hand
Ft. Klamath	Bend	See Schedu	le on page 9			
Geneva	Culver	Spl. Auto			7.00	
Grandview	Culver	Spl. Auto			5.00	
Grizzly	Madras	Auto Stage	Ex. Sun.	7:00 AM	1.75	40
Hay Creek	Madras	Auto Stage	Ex. Sun.	7:00 AM	1.00	50
Hood River	Bingen-WhSal	Spl. Autos	or by foot o	ver Bridge		
Klamath Falls	Bend	Schedule	on page 9			
Lakeview	Bend	Auto Stage	Daily		12.20	
	Via Klamat	h Falls.				
Lamonta	Culver	Spl. Auto			4.00	
La Pine	Bend	See Schedu	le on page 9			
Millican	Bend	Auto Stage	Daily	9:00 AM	1.75	25
Mitchell	Prineville	Auto Stage	Ex. Sun.	8:30 AM	4.00	Hand
Paulina	Prineville	Auto Stage	Ex. Sun.	8:30 AM	5.00	Hand
Post	Prineville	Auto Stage	Ex. Sun.	8:30 AM	2.50	25
Riley	Bend	Auto Stage	Daily	9:00 AM	6.85	50
Silver Lake	Bend	Auto Stage	Ex. Sun.	9:00 AM	5.30	25
Sisters	Redmond	Auto	Ex. Sun.	8:30 AM	2.00	Hand
Summer Lake	Bend	Auto Stage	Ex. Sun.	9:00 AM	7.35	25
*The Dalles	Granddalles	Ferry	Meets Trains	3 and 4,		
			also 8 if on	time	.25	50
Tygh Valley	Sherar	Auto Stage	Ex. Sun.	2:00 PM	.50	Hand
Umatilla	Plymouth	Ferry	Daily (Day	& Night)	.50	Hand
Wamic	Sherar	Auto Stage	Ex. Sun.	2:00 PM	1.00	Hand
Warm Springs	Gateway	Stage	Ex. Sun.	9:30 AM	1.50	Hand
†Suspend in	Winter.					
Washington:						
Appleton	Lyle	Stage	Ex. Sun.	7:30 AM	1.50	Hand
Battle Ground	Vancouver	Auto Stage	Daily	Frequent	.75	Hand
Bickleton	Roosevelt	Auto Stage	Ex. Sun.	5:00 AM	3.00	Hand
Brush Prairie	Vancouver	Auto Stage	Daily	Frequent	.50	Hand
Cheney	So. Cheney	Spl. Auto			1.00	
Chenoweth	Underwood	Stage	Ex. Sun.	12:15 PM	.75	Hand
					2.50	Hand
Gilmer	Bingen-Wh Sal	Auto Stage	Ex. Sun.	1:00 PM	1.00	Hand
Glenwood	Bingen-Wh Sal	Auto Stage	Ex. Sun.	1:00 PM	1.50	Hand
Goldendale	Maryhill	Auto Stage	Meets all	trains	1.00	
Govern't Spgs.	Carson	Auto	Daily	11:00 AM	Free	Hand
Guler	Bingen-Wh Sal	Auto Stage	Ex. Sun.	1:00 PM	1.50	Hand
Hanford	Kennewick	Auto Stage	Daily	7:30 AM	2.50	Hand
Hartland	Lyle	Auto Stage	Tu., Th. Sat	1:30 PM	1.00	Hand
Husum	Bingen W Sal	Auto Stage	Ex. Sun.	1:00 PM	.50	Hand
La Center	Vancouver	Auto Stage	Daily	Hourly	+.55	Hand
					.75	Hand
Laurel	Bingen-Wh Sal	Auto Stage	Ex. Sun.	1:00 PM	1.00	Hand
Liberty Bond	Lyle	Stage	Ex. Sun.	7:30 AM	2.00	Hand
Moffett's Spgs.	Cascades	Auto	Daily	All trains	.25	Hand
Orchards	Vancouver	Auto Stage	Daily	Frequent	.25	Hand
Richland	Kennewick	Auto Stage	Daily	8:00 AM	.75	Hand
St. Martin's Spg	Carson	Auto	Daily	All trains	.75	Hand
Snowden	Bingen-Wh Sal	Auto Stage	Ex. Sun.	7:30 AM	1.50	Hand
The Cedars	Underwood	Auto on ca	ll		4.00	Hand
Trout Lake	Underwood	Auto on ca	ll		8.00	Hand
Trout Lake	Bingen-Wh Sal	Auto Stage	Ex. Sun.	1:00 PM	1.50	Hand
White Bluffs	Kennewick	Auto Stage	Daily	8:00 AM	3.00	Hand
White Salmon	Bingen-Wh Sal	Auto	(Daily by a	ppoint.)	.35	Hand
Yacolt	Vancouver	Auto Stage	Daily	Frequent	† 1.50	Hand

† Suspend in Winter. * Suspend only in case of heavy ice in river.
 † 7:30 a. m. to 7:15 p. m. * 7:30 a. m. to 6:30 p. m.
 † 7:30 a. m., 11:15 a. m., 4:30 p. m., (9:45 a. m., 7:15 p. m. Sundays.)
 Ex. Sun.—Except Sundays. Tu.—Tuesdays. Fri.—Fridays.
 Mon.—Mondays. Sat.—Saturdays.

The information shown above is prepared from the best data obtainable, but it is subject to change without notice and neither service nor rates are guaranteed.

\$3 LOW \$4
 Fridays, Saturdays or Sundays **ROUND TRIPS** Daily — Long Return
 Return limit Mondays **BETWEEN** Limit

Portland and Seaside — Gearhart — Pacific Ocean.
 Also \$3.55 Round Trip Portland to Seaside and \$3 to Astoria daily with a 30 day return limit. S. P. & S. RY. Trains—Stages

GENERAL OFFICES COMMERCE BUILDING 271 Stark Street, corner Fourth PORTLAND, OREGON

W. F. TURNER..... President..... Portland, Oregon

A. J. DAVIDSON..... General Manager..... Portland, Oregon
G. E. VOTAW..... Superintendent..... Portland, Oregon

PASSENGER AND FREIGHT TRAFFIC DEPARTMENTS
R. H. CROZIER..... General Passenger Agent..... Portland, Oregon
G. L. WILLIAMS..... Assistant General Passenger Agent..... Portland, Oregon
R. W. PICKARD..... General Freight Agent..... Portland, Oregon
J. M. BALLINGALL..... Assistant General Freight Agent..... Portland, Oregon
J. C. ABBETT..... Advertising Agent..... Portland, Oregon

AGRICULTURAL AND LIVESTOCK DEPARTMENT
KENNETH C. MILLER..... Agricultural and Livestock Agent..... Portland, Oregon

REPRESENTATIVES
ALBANY, ORE...... H. C. REEVES (Phone M. 291)..... Agent
 Water and Jackson Sts.

ASTORIA, ORE...... J. C. WRIGHT..... General Agent
 Telephone 113, S. F. & S. Ry. Station, 20th and
 Commercial Sts.

BEND, ORE...... H. M. LABERTEW (Phone 454)..... Agent, Ry. Station
G. C. PENDERGAST..... Trav. Freight and Pass. Agent

CORVALLIS ORE...... G. W. SEXSMITH..... Agent
 City Ticket Office, Hotel Benton (Phone 102), or
 O. E. Ry. Station. (Phone 467)

EUGENE, ORE...... F. S. APPELMAN (Phone 140)..... Agent, O. E. Ry. Sta.
FOREST GROVE, ORE...... G. H. RUSSELL (Phone Main 351) Agt., O. E. Ry. Sta.

HILLSBORO, ORE...... L. SHERMAN (Phone M. 541)..... Agt., O. E. Ry. Sta.
JUNCTION CITY, ORE...... L. W. MALLORY (Phone M. 382)..... Agt., O. E. Ry. Sta.

PORTLAND ORE...... A. L. ARNOLD—Agent, Consolidated Ticket Office.
 Broadway and Morrison Sts. Telephone Bdy. 5631.

310 Commerce Building
Telephone ATwater 9111

REDMOND, ORE...... A. P. MEYERS (Phone Black 79)..... Agent, Union Station
ST. HELENS, ORE...... E. G. VOSS (Phone 58)..... Agent, S. P. & S. Station
SALEM, ORE...... E. F. ROBERTS (Phone 7127)..... City Pass. and Ticket
 Agent, O. E. Ry. Station.
J. W. RITCHIE (Phone 4763)..... Freight Agent
 O. E. Ry. Freight Depot.

SAN FRANCISCO, CAL...... J. H. BRADY..... General Agent
CHAS. G. TRYOR..... City Frt. and Pass. Agent
 902 Monadnock Building.

SEASIDE, ORE...... S. A. SEXSMITH (Phone 45)..... Agent, S. P. & S. Ry.
 Station.

SPOKANE, WASH...... H. W. SHIELDS, General Agent, 701 Old National
 Bank Building, Phone Main 4238.
C. J. LIVINGSTON, City Pass. and Ticket Agent.
 Phone Main 3483, Davenport Hotel.

H. W. GREEN..... Ticket Agent, Gt. Nor. Ry. Station
T. A. BRADY..... Ticket Agent, Nor. Pac. Ry. Station
W. R. EMERSON (Phone 735), Ticket Agent, S. P. & S.
 Ry. Station.

J. H. CORBETT..... Freight Agt., S. P. & S. Ry. Depot

PASSENGER STATIONS
PORTLAND, ORE...... S. P. & S. Ry., Union Station, Foot of Sixth Street, ex-
 cept Trains 61 and 62, Vernonia Trains, which use
 Tenth and Hoyt Street Station.
 Oregon Electric Ry., Oregon Electric Station, Front and
 Jefferson Streets.

SPOKANE, WASH...... Northern Pacific Station. Trains No. 3 and 4.
 Great Northern Station. Trains No. 1 and 2.

The representatives of these railroads named above, and at other points will
 gladly quote passenger fares and freight rates, make reservations for sleeping car
 accommodations, and give full details regarding tickets and freight to or from points
 throughout the United States and Canada.

The Spokane, Portland and Seattle, Oregon Trunk and Oregon Electric Rys.
 are affiliated with the Northern Pacific, Great Northern and Chicago, Burlington
 & Quincy Rys. Representatives and agents of these lines, and others throughout
 the East and West, will supply full information regarding these lines, or communi-
 cations may be addressed to

R. H. CROZIER, General Passenger Agent, S. P. & S. Ry.
PORTLAND, OREGON



LOWER FARES EAST THIS SUMMER

Many Routes . .
 Liberal Stopovers

Go Daily to Oct. 15; return
 limit Oct. 31

30-Day Round Trips

Examples:
 New York \$119.77; Wash-
 ington \$130.45.

Season Round Trips

Examples:
 Chicago \$90.30; New York
 \$135.12; St. Louis \$85.60;
 Washington \$116.56.

1-Way COACH Fares

Go Daily to Dec. 15
 Examples:
 Chicago and St. Louis \$40;
 Washington \$67.78; New
 York \$70.70.

1-Way Intermediate Fares

Tickets good in tourist car
 (with berth ticket). Go
 Daily to Dec. 15

Examples:

Chicago and St. Louis \$65;
 New York \$95.70; Wash-
 ington \$92.78.

FARES TO OTHER DESTINATIONS IN PROPORTION

Tickets, detailed informa-
 tion, etc., can be secured
 from Agents or Represent-
 atives or from

R. H. CROZIER
 General Passenger Agent
 922 Commerce Bldg.
 Portland, Oregon

Spokane, Portland & Seattle Railway System