



**Spokane, Portland and Seattle Ry.  
Oregon Trunk Ry.  
Oregon Electric Ry.  
United Railways Co.**

# TIME TABLES



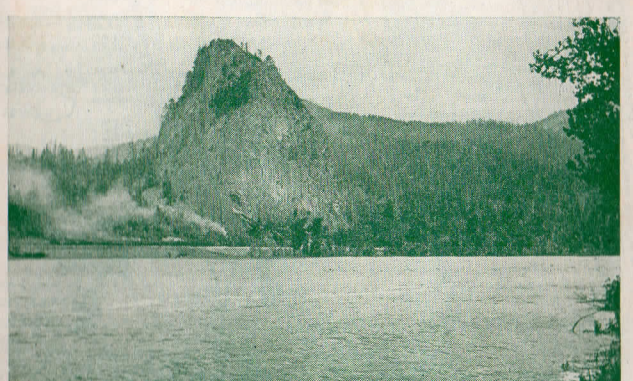
The rugged Cascade Mountains and the Columbia River near Bingen-White Salmon, Washington, on the Spokane, Portland & Seattle Railway

SUBJECT TO CHANGE WITHOUT NOTICE



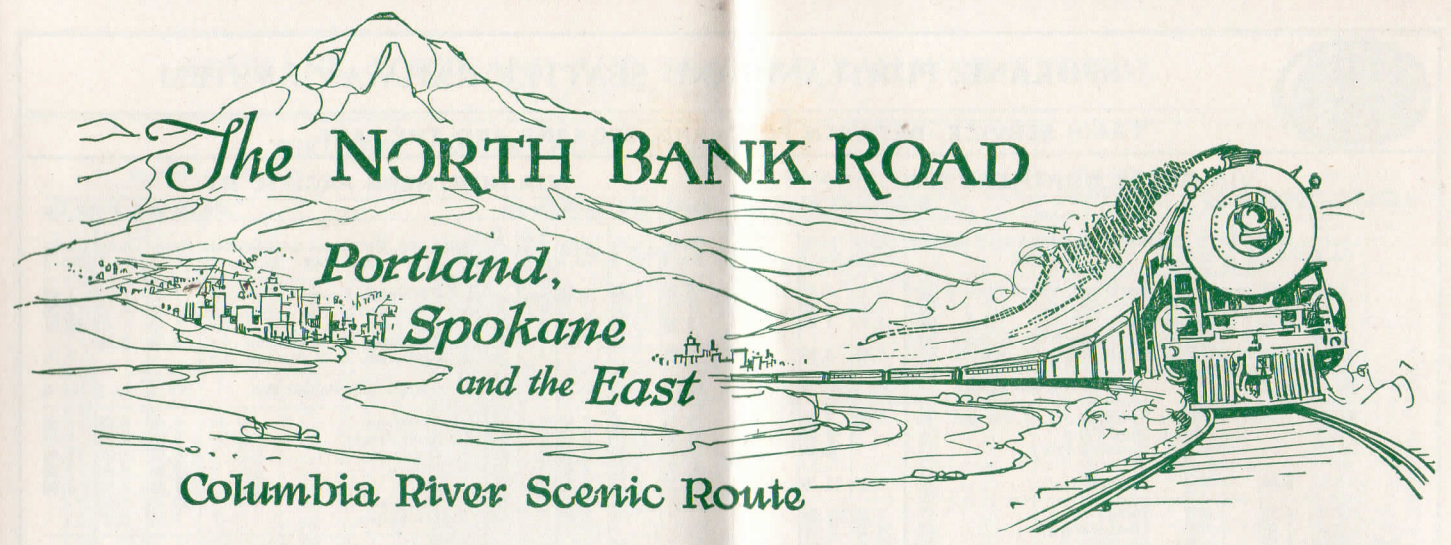
**Spokane, Portland and Seattle Ry.  
Oregon Trunk Ry.  
Oregon Electric Ry.  
United Railways Co.**

# TIME TABLES



Spokane, Portland & Seattle Railway train passing historic Beacon Rock on the Columbia River east of Vancouver, Washington.

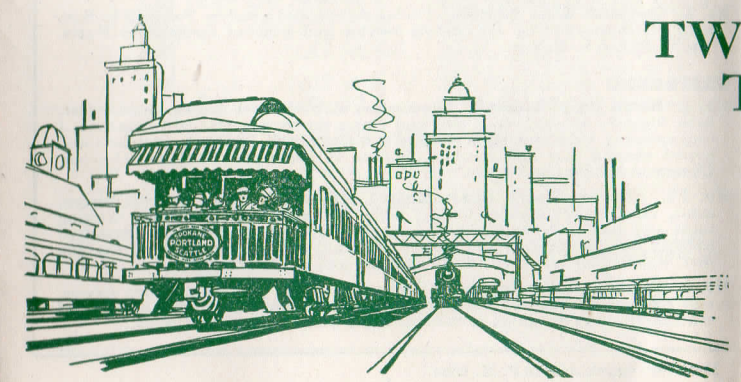
DESTROY PREVIOUS ISSUES



MAJESTIC, SNOW-COVERED MT. HOOD, 11,225 FEET ABOVE THE SEA, AS SEEN FROM BINGEN-WHITE SALMON, WASHINGTON, ON THE LINE OF THE SPOKANE, PORTLAND AND SEATTLE RAILWAY

## TWO SUPERB TRAINS THROUGH TO CHICAGO

**Empire Builder    North Coast Limited**  
Via S. P. & S.-G. N.-C. B. & Q.    Via S. P. & S.-N. P.-C. B. & Q.  
Leaving Portland at 9:30 p. m.    Leaving Portland at 9:30 p. m.  
Arrival Chicago third morning    Arrival Chicago third morning





SPOKANE, PORTLAND AND SEATTLE RAILWAY SYSTEM

TRAIN SERVICE—BETWEEN PORTLAND, SPOKANE AND THE EAST

VIA GREAT NORTHERN RY.

Table with columns for Eastbound, Read Down and Westbound, Read Up. Includes train numbers, times, and stations like Portland, Wishram, Pasco, Spokane, and Chicago.

EQUIPMENT

Eastbound: No. 2. Empire Builder. Observation club car with barber, maid, valet, bath, library, fountain, radio, etc., and dining car service...

No. 4. Columbia River Express. Observation parlor car, dining service and coaches, Portland to Spokane. Standard 12-section, 1 drawing room sleeping car, dining car and coaches, Spokane to St. Paul.

No. 42. Standard sleeping car, Shelby to Omaha Lincoln to Kansas City; dining service and coaches.

WESTBOUND

No. 1. Empire Builder. Observation club car with barber, maid, valet, bath, library, fountain, radio, etc., and dining car service, standard 8-section 2-compartment, 1 drawing room sleeping car, Chicago to Portland.

Standard and tourist sleeping cars and coaches, Chicago to Spokane and Spokane to Portland.

No. 3-1. Standard 12-section 1 drawing room sleeping car, dining car and coaches, St. Paul to Spokane. Observation club car with barber, maid, valet, bath, library, fountain, radio, etc., standard 12-section 1 drawing room sleeping car and coaches, Spokane to Portland.

No. 41. Standard sleeping car Omaha to Shelby, Kansas City to Lincoln; dining car service and coaches.

Light face figures denote A. M. time.

VIA NORTHERN PACIFIC RY.

Table with columns for Eastbound, Read Down and Westbound, Read Up. Includes train numbers, times, and stations like Portland, Wishram, Pasco, Spokane, and Chicago.

EQUIPMENT

Eastbound: No. 2. North Coast Limited. Observation club car with barber, maid, valet, bath, fountain, library, radio, etc., and dining car service, standard 10-section 1 compartment, 1 drawing room sleeping car, Portland to Chicago. Standard and tourist sleeping cars and coaches, Portland to Pasco and Spokane. Coaches, Pasco and Spokane to Chicago.

No. 2-4. North Coast Limited-Alaskan. Observation club car with barber, maid, valet, bath, fountain, library, radio, etc., standard 12-section 1 drawing room and tourist sleeping cars and coaches. Portland to Chicago. Standard sleeping cars, dining cars and coaches, Spokane to St. Paul; standard sleeping cars, Spokane to Kansas City-St. Louis and Butte to Denver.

No. 4. Columbia River Express. Dining service and coaches, Portland to Spokane; standard sleeping car, dining service and coaches, Spokane to Butte; coach Garrison to Helena.

WESTBOUND

No. 1. North Coast Limited. Observation club car with barber, maid, valet, bath, fountain, library, radio, etc., and dining car service, standard 10-section, 1 compartment, 1 drawing room sleeping car, Chicago to Portland. Standard and tourist sleeping cars and coaches, Spokane to Pasco and Portland. Coaches, Chicago to Spokane and Pasco.

No. 3-1. Alaskan-North Coast Limited. Observation club car with barber, maid, valet, bath, fountain, library, radio, etc., standard 12-section, 1 drawing room and tourist sleeping cars and coaches, Spokane to Portland. Standard sleeping cars, dining cars and coaches, St. Paul to Spokane; standard sleeping cars, Kansas City and St. Louis to Spokane, and Denver to Butte.

No. 3. Columbia River Express. Observation library parlor car, dining service, and coaches, Spokane to Portland; standard sleeping car, dining service and coaches, Butte to Spokane; connecting trains from Billings and Helena.

Dark face figures denote P. M. time.

SPOKANE, PORTLAND AND SEATTLE RAILWAY SYSTEM

OREGON TRUNK RY.



PORTLAND - WISHRAM - PASCO - SPOKANE

Large table with columns for Eastbound, Read Down and Westbound, Read Up. Includes train numbers, times, and stations like Portland, Wishram, Pasco, Spokane, and Bend.

LOCAL STOPS ON TRAINS NOS. 1 AND 2

Under advance arrangements with agent, Train No. 2 will stop at any station to receive passengers destined east of Wishram; and Train No. 1 on notice to conductors will stop to discharge passengers from the same territory.

References: t Telegraph station. f Stops on signal. g No. 2 stops on signal to pick up passengers for east of Wishram and No. 1 to discharge passengers from east of Wishram. sf Stops Sundays on signal.

Prineville is reached by the City of Prineville Ry. Trains connect at Prineville Jet. with Oregon Trunk trains Nos. 102 and 103.

Light face figures denote A. M. time.

EQUIPMENT—Nos. 7 and 8. Coaches and smoking cars between Portland, Wishram and Bend, Nos. 8-102 and 103-1. Standard sleeping car between Portland and Bend. Coaches and smoking cars Portland to Wishram and Wishram to Bend. Nos. 220 and 221. Coaches and smokers between Lyle and Goldendale. Nos. 1, 2, 3 and 4. See pages 3 and 4.

Nos. 3 and 4.—Observation parlor car service between Portland and Spokane.

BAGGAGE IN SLEEPING CARS.—Hand baggage in sleeping cars is restricted to what may conveniently be placed in berth or seat occupied by passengers. All baggage should be marked with name and permanent address of owner.

Dark face figures denote P. M. time.



SPOKANE, PORTLAND AND SEATTLE RAILWAY SYSTEM

TRAINS BETWEEN PORTLAND - ST. HELENS - RAINIER - CLATSKANIE - ASTORIA - CLATSOP BEACH

Westbound, Read Down

Eastbound, Read Up

REFERENCES

b Passenger traffic between Warrenton, Flavel, Hammond and Fort Stevens is handled by stages, daily except Sunday, making connection with Trains Nos. 21 and 24. Rail tickets accepted.

RAIL EQUIPMENT

Trains Nos. 21 and 24 carry observation parlor cars, coaches and smoking cars between Portland, Astoria and Clatsop Beach points.

NORTHWEST TRANSIT CO.

Motor stages leave Longview for Ryderwood 9:30 a. m. daily, and 4:10 p. m. daily except Sundays and 9:00 p. m. Sundays and holidays.

Note.—Ferry leaves Goble for Kalama on the half hour, 7:30 a. m. to 6:30 p. m. Arrives Goble from Kalama 7:15 a. m. and hourly till 6:15 p. m. Fare 25 cents one way.

Note.—Bus leaves Rainier for Longview every two hours from 7:30 a. m. to 9:30 p. m. Arrives Rainier from Longview every two hours 7:20 a. m. to 9:20 p. m.

CITY TICKET OFFICES

Spokane—Davenport Hotel—J. G. Travers, Acting General Agent. C. J. Livingston, City Pass'r and Ticket Agt., Phone Main 3483.

Portland—Consolidated Ticket Office, A. L. Arnold, Agent, Phone Bdy. 5631. Broadway and Morrison.

PORTLAND STATIONS

Spokane, Portland and Seattle Ry. trains (except Nos. 61 and 62 to and from Vernonia) use Union Station.

Oregon Electric Ry. trains and S. P. & S. Ry. trains Nos. 61 and 62 to and from Vernonia use Oregon Electric Station, Tenth and Hoyt Streets.

SPOKANE STATIONS

S. P. & S. Ry. Trains Nos. 1 and 2 use Great Northern Station, and Nos. 3 and 4 use Northern Pacific Station.

Table with columns for train numbers (No. 61, 23, 21, 22, 24, 62), miles, and station names (Portland, St. Helens, Rainier, Clatskanie, Astoria, Clatsop Beach). Includes times and directions.

Spokane, Portland and Seattle Transportation Company

MOTOR COACHES

Leave Portland Stage Depot for Seaside, Astoria, Clatskanie, Rainier and St. Helens daily—9:15 a. m.; 12:15 and 10:45 p. m.

For Astoria in addition at 4:15 p. m.

For Rainier and St. Helens daily; 9:15 a. m., 12:15, 4:15, 5:15 and 10:45 p. m. daily.

For St. Helens and Scappoose daily: 9:15 a. m., 12:15, 1:15, 2:15, 4:15, 5:15, 6:15, 10:45 p. m. 12:15 midnight, Saturdays and Sundays, and 9:45 p. m. Sundays.

For Vernonia daily 1:15, 6:15 p. m.

For Keasey: 1:15 p. m. Wednesdays and Saturdays.

Only the Highest Type of Stages Are Used

STAGE DEPOT

Park and Yamhill - BE. 8181

Spokane, Portland and Seattle Transportation Co.

TRAVELERS' AID SERVICE

Representatives of the National Association of Travelers' Aid Societies are at many of the larger stations in the United States, to serve travelers in difficulty and to assist those requiring protection when they arrive in a strange city.



SPOKANE, PORTLAND AND SEATTLE RAILWAY SYSTEM

OREGON ELECTRIC RAILWAY



PORTLAND - SALEM - ALBANY - CORVALLIS - HARRISBURG - JUNCTION CITY - EUGENE

From Portland, Read Down

To Portland, Read Up

Large table with columns for train numbers (51, 15, 49, b11, 47, 13, b9, 43, 41), miles, and station names (Portland, Salem, Albany, Corvallis, Harrisburg, Junction City, Eugene). Includes times and directions.

Note—Additional trains for GARDEN HOME leave Portland at 8:45 a. m., 10:30 a. m., 5:05 p. m. daily. Arrive Portland, 7:45 a. m., 10:05 a. m., 4:55 p. m.

Railway Express Agency, Inc.

The Railway Express Agency, Inc., operates on the Spokane, Portland & Seattle Ry., Oregon Electric and other principal lines in the United States, offering safe, speedy, nation-wide service.

h Stops on flag Sunday only. b Baggage handled. f Stops on signal. Ex. Sun. Except Sunday. Ex. Sat. Except Saturday.

Prevent Forest Fires

A forest fire may be slow in starting, but when it does spread, it is sure to go.

Prevent forest fires—It pays.

CONNECTIONS AT BEND FOR KLAMATH FALLS

Table showing connections at Bend for Klamath Falls, including bus and train schedules.

CONNECTIONS AT EUGENE—COOS BAY POINTS

Table showing connections at Eugene for Coos Bay points, including bus and train schedules.

Pacific Greyhound Lines Stages leave Marshfield for Coquille and Myrtle Point 7:35, 10:00 a. m., 1:45, 5:55, 6:40 p. m.; for Powers at 7:35 a. m., 5:55 p. m.; for Bandon 7:35, 10:00 a. m., 6:40 p. m.; for Crescent City 7:35 a. m.



SPOKANE, PORTLAND AND SEATTLE RAILWAY SYSTEM

PORTLAND - NORTH PLAINS - WILKESBORO - VERNONIA

Table with columns for Read Down, Daily, Miles, S. P. & S. RY., and Read Up. Lists routes and fares for various stations including Portland, Linnton, Wilkesboro, and Vernonia.

ONE-WAY FARES EAST SLASHED!

Reduced One-Way Fares to Eastern Destinations are in effect daily until June 30, 1931. Includes examples for Chicago, St. Paul, New York, and Winnipeg.

PORTLAND - PUGET SOUND - BRITISH COLUMBIA NORTH PACIFIC RY.

Table showing routes and fares for Northbound and Southbound trips between Portland, Vancouver, and Seattle.

Light face figures denote A. M. time. Dark face figures denote P. M. time. / Stop on signal. Points north of Seattle via G. N. Ry.

CONNECTIONS AT PORTLAND SOUTHERN PACIFIC LINES

Table with columns for Southbound, Read Down, All trains daily, and Northbound, Read Up. Lists connections to various cities like Eugene, Medford, and Sacramento.

No. 7 and 8. The Shasta. Lounge car, standard sleeping cars, coaches and dining car via Medford. (Shower, bath, valet.)

COAST LINE

Table with columns for Daily Trains and various stations along the coast line, including San Francisco and Los Angeles.

VALLEY LINE

Table with columns for Daily Trains and various stations in the valley line, including Fresno and Los Angeles.

SPOKANE, PORTLAND AND SEATTLE RAILWAY SYSTEM



All-Year Seashore, Mountain and Health Resorts

ON THE LINES OF THE Spokane, Portland and Seattle Ry.

The mild climate of the Northwest makes it possible to enjoy the charm of each changing season in the mountains or by the sea at all-year resorts reached by short and interesting train trips.



Hotel Seaside, Promenade and Bathing Beach, Seaside

Some of these places are suggested on this page—Seaside Hotel and Gearhart By-The-Sea on Clatsop Beach; rustic Cannon Beach, Pacific Ocean, a short trip from Portland along the wonderful lower Columbia River; Shipperd's, Moffett's and Government Springs, modern health resort hotels, on the Columbia River and in the heart of the Cascade Mountains east of Portland; White Salmon, overlooking the Columbia; and Bend, elevation 3,600 feet, on the great plateau of Central Oregon east of the Cascade Mountains, reached by a night ride from Portland.

Opportunities are many for short week-end hikes into the mountains along the Columbia River, such as historic Beacon Rock, or the site of the frontier blockhouses near Cascades, Wash.; the Crooked, Deschutes and Wind River Canyons.



All Year Golf is Played at Gearhart and Seaside on the Pacific Ocean

Particular information concerning any of these hotels or trips, or an illustrated resort folder, will be mailed on request to R. H. Crozier, General Passenger Agent, S. P. & S. Ry., Portland, Oregon.

HAWAII

Offers Recreation—Rest—Romantic Appeal

Many things attract travelers to the Matson fleet. Frequent sailings from colorful San Francisco's Golden Gate to Hawaii—such comfortable ships—such delicious food—such enjoyable entertainment features—LIFE "as you like it." Sailings also every Saturday from Los Angeles to Honolulu.

Inclusive tours with every detail arranged in advance can be enjoyed any time of the year. It's always Springtime in Hawaii! Total inclusive cost as low as \$293.50 for sea voyage and 7 days in Hawaii, touring the island of Oahu and the volcano on Hawaii.

Ask your agent about frequent sailings on the

Matson Line

Your Fastest Route to South Seas and Australia Only 19 days, San Francisco to Sydney, by the Matson Australian steamers. Sailings every third Thursday—your fastest route! Interesting stops at Honolulu (Hawaii), Pago Pago (Samoa), and Suva (Fiji).

For folders and reservations ask

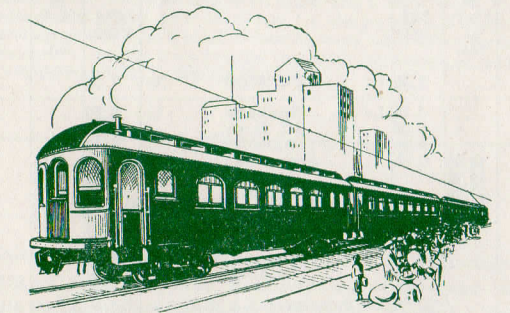
MATSON LINE

271 Pine Street, Portland, Oregon or agents and representatives

Spokane, Portland & Seattle Ry.

At Your Service

Industries seeking location in the Pacific Northwest will find it to their advantage to consult the Spokane, Portland & Seattle Railway Industrial Department. ATwater 9111.



OREGON ELECTRIC RAILWAY

Willamette Valley Route

Trains leave Portland, Tenth and Hoyt Streets, for Salem, Albany, Corvallis and Eugene at 8:00 a.m. and 5:00 p.m. daily; additional trains for Salem at 1:10 p.m. and 6:10 p.m.; for Orenco, Hillsboro and Forest Grove at 10:30 a.m. and 5:05 p.m. Time at Sixth and Salmon is 7 minutes and at Jefferson and Front Sts. 15 minutes later than shown at Tenth and Hoyt Sts.



SPokane, PORTLAND AND SEATTLE RAILWAY SYSTEM

CONNECTIONS AT PORTLAND UNION PACIFIC SYSTEM

Table with columns: Read Down, No. 18, No. 20, No. 19, 23-5, No. 17, Read Up. Lists train numbers and times for various routes.

CONNECTIONS AT SPOKANE GREAT NORTHERN RAILWAY

Table with columns: 2-256 Daily ExSu, Miles, Pacific Time, 255-1 Daily ExSu. Lists train numbers and times for various routes.

SPOKANE, COEUR D'ALENE & PALOUSE RY. CO.

Table with columns: 94 Daily ex. Sat., 2-64 Daily, 67-1 Daily, 95 Daily ex. Sat. Lists train numbers and times for various routes.

SPOKANE, COEUR D'ALENE & PALOUSE RY. CO.

Table with columns: Daily, Daily, Daily, Daily. Lists train numbers and times for various routes.

CONNECTIONS AT SPOKANE NORTHERN PACIFIC RAILWAY

Table with columns: Read Down, 4-313 Daily, 2-311 Daily, Miles, Pacific Time, 312-1 Daily, 314-1 Daily, Read Up. Lists train numbers and times for various routes.

SPOKANE INTERNATIONAL RAILROAD—CANADIAN PACIFIC RAILWAY

Table with columns: Read Down, 2-2 Daily, 1-1 Daily, Read Up. Lists train numbers and times for various routes.

\* Except Sunday. Sundays arrives Edmonton 9:10 p.m.; leaves 7:00 a.m.

CONNECTIONS AT PASCO NORTHERN PACIFIC RAILWAY

Table with columns: 4-333 Daily, 2-5 Daily, 4-3 Daily, 1 Daily, M., Main Line West, 2 Daily, 4 Daily, 6-1 Daily, 334-3 Daily. Lists train numbers and times for various routes.

Table with columns: 4-6 Daily, 2-4 Daily, M., Main Line East, 5-3 Daily, 3-1 Daily. Lists train numbers and times for various routes.

Table with columns: 4-353 Daily, 2-349 Daily, 2-347 Daily, M., 348-1 Daily, 350-3 Daily, 354-3 Daily. Lists train numbers and times for various routes.

† Motor. \* Daily except Sunday. / Stop on signal.

SPokane, PORTLAND AND SEATTLE RAILWAY SYSTEM



Popular the year 'round... a stretch of sandy beach at Santa Monica, California, with Beach Clubs, Cafes and Amusement Piers following the shore for miles. —Photo courtesy The All-Year Club of Southern California.

CALIFORNIA This Spring!

The world over you find no winter clime more favorable for your health, comfort and complete enjoyment! Sunny California has every facility for outdoor sports—golf, tennis, polo, sea bathing, etc.—in her cities are found metropolitan advantages, while points of scenic and historical interest, all under a friendly sun and surrounded by the fascinating Spanish influence, charm the visitor.

Enjoy a California Vacation This Year

Low fares are in effect from Spokane via

Spokane, Portland & Seattle Ry.

on two fine limited trains daily. Fine connections in Portland Union Station for California.

Pacific Steamship Company steamers leave Portland Admiral Line Terminal for San Francisco, Los Angeles and San Diego every Tuesday at 5 P.M.

North Coast Limited—Empire Builder 9:45 p.m. from G. N. Station. Columbia River Express 8:00 a.m. from N. P. Station.

Full particulars from

J. G. TRAVERS, C. J. LIVINGSTON, Acting General Agent City Passenger and Ticket Agent

DAVENPORT HOTEL TICKET OFFICE MAIn 3483

Spokane, Portland and Seattle Railway

Sleeping and Parlor Car Fares

INCLUDING SURCHARGES

Subject to change without notice.

Table with columns: BETWEEN AND, PORTLAND, SPOKANE. Lists fares for various routes and services.

\*No through car; fare applies for continuous trip via direct connections. The fare for a section is the combined fare of an upper and a lower berth. The fare for an upper berth is 80% of the lower berth fare. A compartment is a private room with lower and upper berths and toilet; a drawing room has a divan berth in addition. Occupancy of a drawing room requires two adult rail tickets, or their equivalent. For a compartment 1 1/2 tickets are required.

FREIGHT SERVICE

Route your freight shipments via the Spokane, Portland and Seattle Railway for fast and dependable service—between Portland, Astoria, Spokane, Yakima, Walla Walla, Pendleton, Lewiston, Bend and all points East.

Let us handle your transportation problems

# STAGE AND BOAT CONNECTIONS

To points in Oregon and Washington reached from stations on the Spokane, Portland and Seattle Ry. east of Portland and Oregon Trunk Ry.

Destination	From	Conveyance	Days	Time	Fare	Free Baggage Lbs.
<b>Oregon:</b>						
Arlington	Roosevelt	Ferry	Daily	Frequent	\$0.25	Hand
Ashwood	Madras	Auto Stage	Ex. Sun.	6:30 A. M.	2.50	Hand
Boulder	Alderdale	Ferry	Daily	Frequent	1.00	50
Burns	Bend	Auto Stage	Daily	9:00 AM	7.50	Hand
Chiloquin	Bend	Auto Stage	Daily	9:00 AM	5.35	Hand
Crescent	Bend	Auto Stage	Daily	9:00 AM	2.00	Hand
Maupin	Prineville	Auto Stage	Tu, Fri.	8:00 AM	1.00	Hand
Prineville	Prineville	Auto Stage	Mo., Th.	7:30 AM	4.50	Hand
Ft. Klamath	Bend	Auto Stage	Daily	7:30 AM	4.50	Hand
Geneva	Culver	Spl. Auto			7.00	
Grandview	Culver	Spl. Auto			5.00	
Grant	Maryhill	Ferry	Daily	Frequent	1.75	Hand
Grizzly	Madras	Auto Stage	Ex. Sun.	7:00 AM	1.50	40
Hay Creek	Madras	Auto Stage	Ex. Sun.	7:00 AM	1.00	50
Hood River	Underwood	Spl. Autos	or by foot	ver Bridge	3.10	Hand
Klamath Falls	Bingen-Wh Sal	Spl. Autos	or by foot	ver Bridge		
Lakeview	Bend	Auto Stage	Daily		12.20	
Laмотa	Culver	Spl. Auto			4.00	
La Pine	Bend	Auto Stage	Daily		1.75	25
Millican	Bend	Auto Stage	Daily	9:00 AM	4.00	Hand
Mitchell	Prineville	Auto Stage	Ex. Sun.	8:30 AM	5.00	Hand
Paulina	Prineville	Auto Stage	Ex. Sun.	8:30 AM	2.50	25
Post	Prineville	Auto Stage	Daily	9:00 AM	6.85	Hand
Riley	Bend	Auto Stage	Daily	Frequent	.25	Hand
Rowena	Lyle	Ferry	Daily	Frequent	2.50	Hand
Silver Lake	Bend	Auto Stage	Daily	9:30 AM	5.30	25
Sisters	Redmond	Auto	Ex. Sun.	2:00 PM	2.00	
Summer Lake	Bend	Auto Stage	Daily	9:00 AM	7.35	25
*The Dalles	Granddalles	Ferry	Daily	Frequent	.25	50
Tygh Valley	Sherar	Auto Stage	Ex. Sun.	2:00 PM	.50	Hand
Umatilla	Plymouth	Ferry	Daily	9:30 AM	1.50	Hand
Wamic	Sherar	Auto Stage	Ex. Sun.	2:00 PM	1.00	Hand
Warm Springs	Gateway	Stage	Ex. Sun.	9:30 AM	1.50	Hand
‡Suspend in Winter.						
<b>Washington:</b>						
Appleton	Lyle	Stage	Ex. Sun.	7:30 AM	1.50	Hand
Attalia	Hover	Ferry	Daily	Frequent	.25	100
Battle Ground	Vancouver	Auto Stage	Daily	Frequent	.75	Hand
Bickleton	Roosevelt	Auto Stage	Ex. Sun.	5:00 AM	3.00	Hand
Brush Prairie	Vancouver	Auto Stage	Daily	Frequent	.50	Hand
Cheney	So. Cheney	Spl. Auto			1.00	
Chenoweth	Underwood	Stage	Ex. Sun.	12:15 PM	.75	Hand
Gilmer	Bingen-Wh Sal	Auto on ca	Ex. Sun.	1:00 PM	2.50	Hand
Glenwood	Underwood	Auto on ca	Ex. Sun.	1:00 PM	1.00	Hand
Glenwood	Bingen-Wh Sal	Auto Stage	Ex. Sun.	1:00 PM	1.00	Hand
Goldendale	Maryhill	Auto Stage	Meets 3 & 4, 5†	(other trans by appointment)	\$2.50	Hand
Govern't Spgs.	Carson	Auto	Daily	11:00 AM	Free	Hand
Guler	Underwood	Auto on ca			8.00	Hand
Guler	Bingen-Wh Sal	Auto Stage	Ex. Sun.	1:00 PM	2.00	Hand
Hanford	Kenwick	Auto Stage	Daily	7:30 AM	2.50	Hand
Hartland	Lyle	Auto Stage	Tu, Th, Sat	1:30 PM	1.00	Hand
Husum	Underwood	Auto on ca			3.00	Hand
Husum	WhiteSalm'n	Auto Stage	Ex. Sun.	1:00 PM	.75	Hand
La Center	Vancouver	Auto Stage	Daily	Hourly	.55	Hand
Laurel	Bingen-Wh Sal	Auto Stage	Ex. Sun.	1:00 PM	2.00	Hand
Liberty Bond	Lyle	Stage	Ex. Sun.	7:30 AM	2.00	Hand
Moffett's Spgs.	Cascades	Auto	Daily	All trains	.25	Hand
Orchards	Vancouver	Auto Stage	Daily	Frequent	.25	Hand
Richland	Kenwick	Auto Stage	Daily	8:00 AM	.75	Hand
St. Martin's Spg.	Carson	Auto	Daily	All trains	.75	Hand
Shipherd's Spgs.	Carson	Auto	Daily	All trains	.75	Hand
Snowden	Bingen-Wh Sal	Auto Stage	Ex. Sun.	7:30 AM	1.50	Hand
The Cedars	Underwood	Auto on ca			4.00	Hand
Trout Lake	Underwood	Auto on ca			8.00	Hand
Trout Lake	Bingen-Wh Sal	Auto Stage	Ex. Sun.	1:00 PM	2.00	Hand
White Bluffs	Kenwick	Auto Stage	Daily	8:00 AM	3.00	Hand
White Salmon	Bingen-Wh Sal	Spl. auto	(Daily by appointment)		.35	Hand
White Salmon	Underwood	Spl. auto	n call.		.50	Hand
Yacolt	Underwood	Spl. auto	n call.		.50	Hand
Yacolt	Vancouver	Auto Stage	Daily	Frequent	1.75	Hand

† Suspend in Winter. \* Suspend only in case of heavy ice in river.  
‡ Winter 75c from Underwood.

The information shown above is prepared from the best data obtainable, but it is subject to change without notice and neither service nor rates are guaranteed.

## GENERAL OFFICES CHAMBER OF COMMERCE BUILDING 271 Stark Street, corner Fourth PORTLAND, OREGON

### OFFICERS

**W. F. TURNER** President Portland, Oregon

### OPERATING DEPARTMENT

**A. J. DAVIDSON** General Manager Portland, Oregon  
**G. E. VOTAW** Superintendent Portland, Oregon

### PASSENGER AND FREIGHT TRAFFIC DEPARTMENTS

**R. H. CROZIER** General Passenger Agent Portland, Oregon  
**G. L. WILLIAMS** Assistant General Passenger Agent Portland, Oregon  
**R. W. PICKARD** General Freight Agent Portland, Oregon  
**J. M. BALLINGALL** Assistant General Freight Agent Portland, Oregon  
**J. C. ABBETT** Advertising Agent Portland, Oregon

### AGRICULTURAL AND LIVESTOCK DEPARTMENT

**KENNETH C. MILLER** Agricultural and Livestock Agent Portland, Oregon

### REPRESENTATIVES

**ALBANY, ORE.** H. C. REEVES (Phone M. 291) Agent  
Water and Jackson Sts.

**ASTORIA, ORE.** J. C. WRIGHT General Agent  
G. C. PENDERGAST, Traveling Freight and Pass. Agent, Telephone 113, S. P. & S. Ry. Station, 20th and Commercial Sts.

**BEND, ORE.** H. M. LARBERTEW (Phone 454) Agent, Union Station  
L. S. DAVIS (Phone 34) Trav. Freight and Pass. Agent

**CORVALLIS, ORE.** G. W. SEXSMITH (Phone 467) Agt. O. E. Ry. Sta.  
**EUGENE, ORE.** F. S. APPELMAN (Phone 140) Agent, O. E. Ry. Sta.  
**FOREST GROVE, ORE.** G. H. RUSSELL (Phone Main 351) Agt., O. E. Ry. Sta.  
**HILLSBORO, ORE.** L. D. SHERMAN (Phone M. 541) Agt., O. E. Ry. Sta.  
**JUNCTION CITY, ORE.** L. W. MALLORY (Phone M. 382) Agt., O. E. Ry. Sta.  
**PORTLAND, ORE.** A. L. ARNOLD - Agent, Consolidated Ticket Office.

Broadway and Morrison Sts. Telephone Bdy. 5631.  
L. F. KNOWLTON - General Agent, Passenger Dept.  
J. C. MOORE - Gen'l Agent, Freight Department  
L. B. HICKAM - Passenger Agent  
R. E. HENDERSHOTT - Passenger Agent  
G. F. EHLEN - Contracting Freight Agent  
R. E. MEALS - Contracting Freight Agent  
E. B. SCHULTZ - Contracting Freight Agent  
J. T. HARDY - Trav. Freight and Pass. Agent  
928 Chamber of Commerce Building.

H. SHEEDY, Agent, O. E. Ry. Station, 10th and Hoyt Sts.

C. O. BUTLER, Tkt. Agt., O. E. Ry., Jefferson St. Sta.  
J. L. MILLER, Tkt. Agt., Union Station, Foot of 6th Street, Telephone Broadway 0802.  
**REDMOND, ORE.** A. P. MEYERS (Phone Black 79) Agent, Union Station  
**SALEM, ORE.** E. F. ROBERTS (Phone 727) City Pass. and Ticket Agent, O. E. Ry. Station.  
J. W. BITCHIE (Phone 127) Freight Agent  
O. E. Ry. Station.  
J. H. BRADY (Phone 727) Trav. Freight Agent  
O. E. Ry. Station.

**SAN FRANCISCO, CAL.** H. W. SHELDON - Dist. Freight & Pass. Agent  
CHAS. G. TRYOR - City Frt. and Pass. Agent  
902 Monadnock Building.

**SEASIDE, ORE.** S. A. SEXSMITH (Phone 45) Agent, S. P. & S. Ry. Station.

**SPOKANE, WASH.** J. G. TRAVERS, Acting General Agent, 701 Old National Bank Building, Phone Main 4238.  
C. J. LIVINGSTON, City Pass. and Ticket Agent, Phone Main 3483, Davenport Hotel.

H. W. GREEN - Ticket Agent, Gt. Nor. Ry. Station  
T. A. BRADY - Ticket Agent, Nor. Pac. Ry. Station  
**VANCOUVER, WASH.** W. R. EMERSON (Phone 735) Ticket Agent, S. P. & S. Ry. Station.  
J. H. CORBETT - Freight Agt., S. P. & S. Ry. Depot

### PASSENGER STATIONS

**PORTLAND, ORE.** S. P. & S. Ry., Union Station, Foot of Sixth Street, except Trains 61 and 62, Vernonia Trains, which use Tenth and Hoyt Street Station.  
Oregon Electric Ry., Oregon Electric Station, Tenth and Hoyt Streets, Sixth Street Terminal, Salmon 5th to 6th Streets, and Jefferson Street Station, Front and Jefferson Streets.

**SPOKANE, WASH.** Northern Pacific Station. Trains No. 3 and 4.  
Great Northern Station. Trains No. 1 and 2.

The representatives of these railroads named above, and at other points will gladly quote passenger fares and freight rates, make reservations for sleeping car accommodations, and give full details regarding tickets and freight to or from points throughout the United States and Canada.

The Spokane, Portland and Seattle, Oregon Trunk and Oregon Electric Rys. are affiliated with the Great Northern, Northern Pacific and Chicago, Burlington & Quincy Rys. Representatives and agents of these lines, and others throughout the East and West, will supply full information regarding these lines, or communications may be addressed to

**R. H. CROZIER**, General Passenger Agent, S. P. & S. Ry.  
PORTLAND, OREGON

