

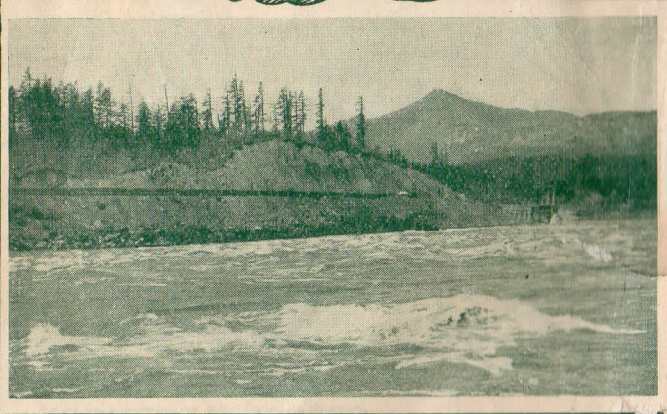


**Spokane, Portland and Seattle Ry.
Oregon Trunk Ry.
Oregon Electric Ry.
United Railways Co.**

**Spokane, Portland and Seattle Ry.
Oregon Trunk Ry.
Oregon Electric Ry.
United Railways Co.**

TIME TABLES

TIME TABLES



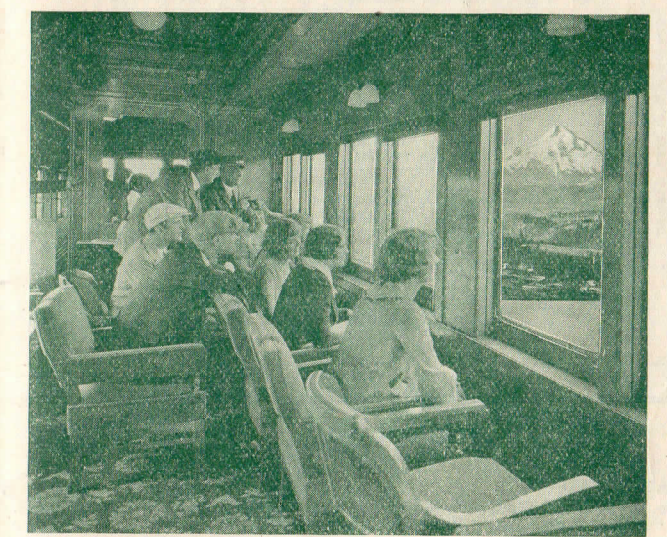
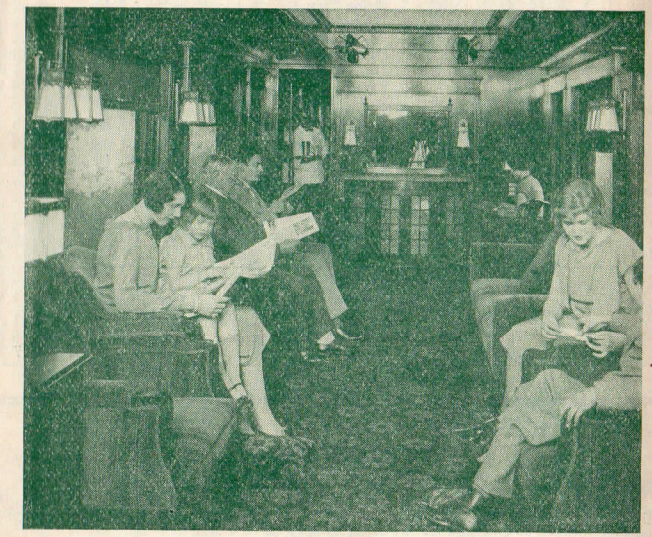
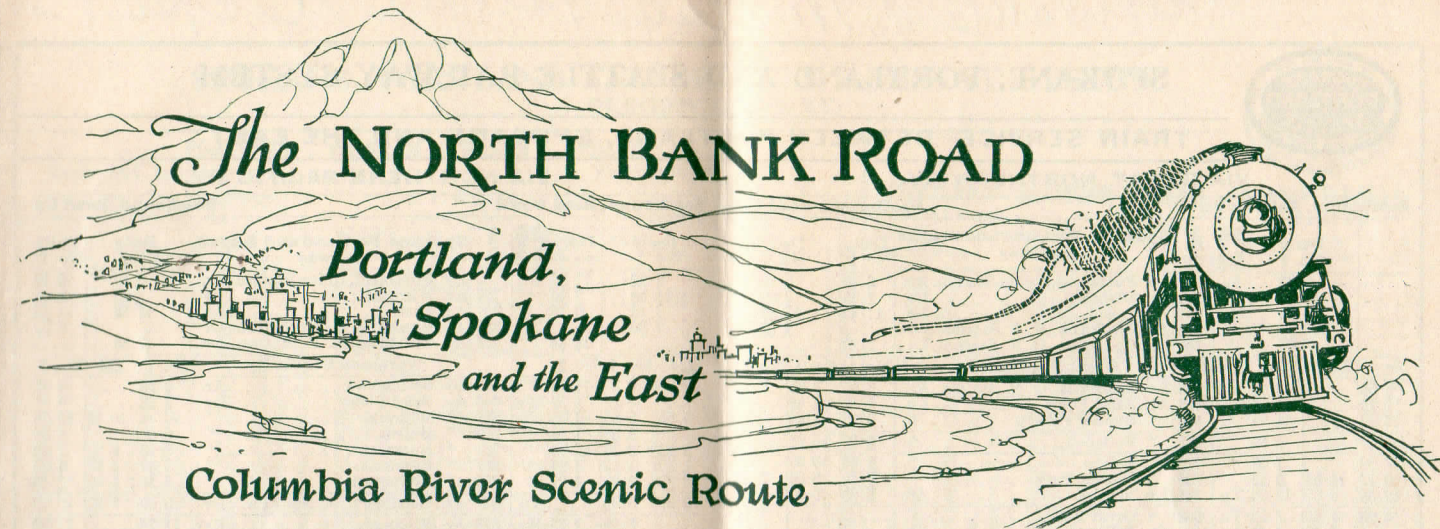
Spokane, Portland and Seattle Railway Limited Train and Fish Wheel at the Cascades of the Columbia, near Cascades, Washington



Bathers Enjoying the Refreshing Surf at Clatsop Beach, Pacific Ocean, Tillamook Head and Lighthouse in the Distance.

DESTROY PREVIOUS ISSUES

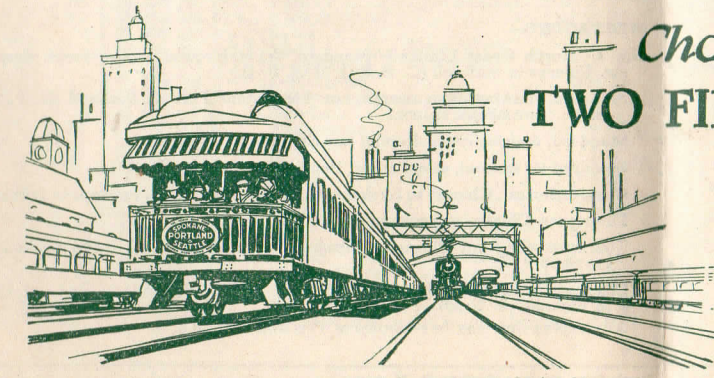
DESTROY PREVIOUS ISSUES



THE ELEGANTLY APPOINTED OBSERVATION CLUB, LIBRARY AND SLEEPING CARS OF THE NORTH COAST AND ORIENTAL LIMITED ARE UNSURPASSED ANYWHERE

Low Round Trip Fares to the East are In Effect All Summer

Full information of Spokane, Portland and Seattle Railway agents and representatives



Choice of
TWO FINE STEEL TRAINS
Daily

THE ORIENTAL LIMITED via S. P. & S., G. N., C. B. & Q. leaving Portland 9.00 p. m., and THE NORTH COAST LIMITED via S. P. & S., N. P., C. B. & Q., leaving Portland at 11.00 a. m.

68 HOURS Portland—Chicago

See Schedules on Pages 3 and 4

Leave Portland Northern Pacific Depot



SPOKANE, PORTLAND AND SEATTLE RAILWAY SYSTEM

TRAIN SERVICE—BETWEEN PORTLAND, SPOKANE AND THE EAST

VIA GREAT NORTHERN RY.

Eastbound, Read Down			Westbound, Read Up		
Daily No. 2	One Day Example	Miles	Daily No. 1	Daily No. 3	Daily No. 4
9 00	Su.	0	Lv. Portland, Union Station. Ar.	6 10	6 10
11 59	Mo.	106	Ar. Wishram	2 55	2 55
3 15		231	Ar. Pasco	11 35	11 55
7 30		378	Ar. Spokane, N. P. Station. Lv.	7 30	7 55
		380	Ar. Spokane, G. N. Station. Lv.	7 20	
Great Northern Ry.					
8 55	No. 44	No. 2	No. 1	No. 3	No. 43
11 20					
12 20					
8 15		5 30		9 55	10 05
7 50		7 02		9 50	10 25
10 12		9 35		7 30	8 06
12 05		12 05		5 00	5 30
4 25		7 50			
7 35		4 40			
4 55		3 15			
7 55		7 30			
11 00		4 40			
1 25		11 07			
7 45					
8 00					
8 30		6 55		12 01	11 45
9 00		7 30		11 25	11 00
Burlington Route					
9 30	No. 52	No. 2	No. 49	No. 51	No. 43
1 05					
9 00					
7 40		7 00			
10 25					
12 40					
7 25					
8 25					

EQUIPMENT

EASTBOUND—
No. 2. Oriental Limited.—Standard, compartment, drawing room, sleeping cars Portland to Spokane, St. Paul and Chicago (G. N. 2, C. B. & Q. 52). Standard drawing room sleeping car Portland to Glacier Park (July 5 to Sept. 15, incl.) (G. N. 2).
 Standard drawing room sleeping car Portland to Yellowstone Park (until Sept. 19, incl.) (N. P. 4-224-217).
 Standard (16 sections) sleeping cars Portland to Spokane.
 Standard (16 sections) sleeping car Portland to Bend (O. T. 102).
 Observation car Portland to Spokane. Spokane to Chicago (G. N. 2, C. B. & Q. 52).
 Tourist sleeping car Portland to Spokane, Spokane to Chicago (G. N. 2, C. B. & Q. 52).
 Dining car Spokane to Chicago (G. N. 2, C. B. & Q. 52).
 Coaches Portland to Spokane, Spokane to Chicago (G. N. 2, C. B. & Q. 52). Wishram to Bend (O. T. 102).
 Occupancy of berth permitted until 8.00 a. m. at Spokane.

WESTBOUND—
No. 1. Oriental Limited. Standard drawing room, compartment sleeping car Chicago to Portland (C. B. & Q. 49, G. N. 1).
 Standard drawing room sleeping car, Glacier Park to Portland (G. N. 1) (July 4 to Sept. 14, incl.).
 Observation car, Chicago to Spokane. (C. B. & Q. 49, G. N. 1). Spokane to Portland.
 Dining cars Chicago to Spokane, Spokane to Portland.
 Parlor car Spokane to Portland.
 Tourist sleeping car Chicago to Spokane (C. B. & Q. 49, G. N. 1).
 Coaches Chicago to Spokane, Spokane to Portland.

VIA NORTHERN PACIFIC RY.

Eastbound, Read Down			Westbound, Read Up		
Daily No. 2	One Day Example	Miles	Daily No. 1	Daily No. 3	Daily No. 4
9 00	Su.	0	Lv. Portland, Union Station. Ar.	6 10	6 10
11 59	Mo.	106	Ar. Wishram	2 55	2 55
3 15		231	Ar. Pasco	11 35	11 55
7 30		378	Ar. Spokane, G. N. Station. Lv.	7 30	7 55
		380	Ar. Spokane, N. P. Station. Lv.	7 20	
Northern Pacific Ry.					
8 20	No. 2	No. 4	No. 1	No. 223	No. 3
10 25					
5 55		11 45		5 20	6 55
9 23		12 10		3 28	4 41
1 30		3 23		10 35	10 55
2 58		4 22		6 30	6 55
9 30		9 30		7 18	6 50
5 10		7 25		3 39	2 40
9 10		11 24		2 30	1 40
11 17		1 32		10 00	7 30
2 27		4 45		11 21	11 20
6 53		8 57		7 10	6 50
9 40		11 38		4 55	4 30
12 09		1 57		11 40	10 45
8 48		9 38		8 53	7 45
9 00		9 50		6 10	4 57
7 10		8 23		7 12	8 42
7 40		9 00		7 00	8 30
8 00		9 50		10 11	10 40
11 35		1 05		7 05	3 01
7 00		9 00		11 05	6 30
Burlington Route					
7 00	No. 42	No. 44	No. 41	No. 43	No. 47
7 40					
3 30		12 40		4 25	11 50
8 45		7 25		10 30	6 30
7 35		8 25		11 55	7 20

EQUIPMENT

EASTBOUND—
No. 4. North Coast Limited.—Standard, drawing room, compartment, sleeping car, Portland to Chicago (N. P. 2, C. B. & Q. 50).
 Observation parlor car, Portland to Spokane, Library observation car Spokane to Chicago (N. P. 2, C. B. & Q. 50).
 Dining car Portland to Spokane, Spokane to Chicago.
 Tourist sleeping car Spokane to Chicago (N. P. 2, C. B. & Q. 50).
 Coaches Portland to Spokane, Spokane to Chicago.

WESTBOUND—
No. 3. North Coast Limited.—Standard, drawing room, compartment, sleeping car, Chicago to Portland (C. B. & Q. 51, N. P. 1).
 Standard, drawing room sleeping car Yellowstone Park to Portland (N. P. 234-223-1). (until Sept. 19 incl.)
 Standard, drawing room sleeping cars Spokane to Portland.
 Standard (16 section), sleeping car, Bend to Portland (O. T. 103).
 Observation car, Chicago to Spokane (C. B. & Q. 51, N. P. 1), Spokane to Portland.
 Dining car, Chicago to Spokane.
 Tourist sleeping car, Chicago to Spokane (C. B. & Q. 51, N. P. 1), Spokane to Portland.
 Coaches, Chicago to Spokane (C. B. & Q. 51, N. P. 1), Spokane to Portland, Bend to Wishram (O. T. 103).
 All sleeping cars may be occupied at Portland till 7.30 a. m.

Light face figures denote A. M. time. Dark face figures denote P. M. time.

SPOKANE, PORTLAND AND SEATTLE RAILWAY SYSTEM

OREGON TRUNK RY.



PORTLAND - WISHRAM - PASCO - SPOKANE

Eastbound, Read Down				Westbound, Read Up			
No. 8 Daily	No. 6 Daily	No. 2 Daily	No. 4 Daily	No. 1 Daily	No. 3 Daily	No. 5 Ex. Su	No. 7 Daily
6 05	7 55	9 00	11 00	6 10	6 10	9 55	6 45
6 32	8 12	9 30	11 30	6 30	6 30	9 30	6 27
6 58	8 38	9 50	11 50	6 50	6 50	9 50	6 22
7 07	8 47	10 00	12 00	7 00	7 00	10 00	6 15
7 11	8 51			7 07	7 07		6 04
7 19	8 59			7 15	7 15		6 02
7 27	9 07			7 23	7 23		5 56
7 35	9 15			7 31	7 31		5 51
7 43	9 23			7 39	7 39		5 46
7 51	9 31			7 47	7 47		5 40
8 00	9 40			7 55	7 55		5 34
8 08	9 48			8 03	8 03		5 28
8 16	9 56			8 11	8 11		5 22
8 24	10 04			8 19	8 19		5 16
8 32	10 12			8 27	8 27		5 10
8 40	10 20			8 35	8 35		5 04
8 48	10 28			8 43	8 43		4 58
8 56	10 36			8 51	8 51		4 52
9 04	10 44			8 59	8 59		4 46
9 12	10 52			9 07	9 07		4 40
9 20	11 00			9 15	9 15		4 34
9 28	11 08			9 23	9 23		4 28
9 36	11 16			9 31	9 31		4 22
9 44	11 24			9 39	9 39		4 16
9 52	11 32			9 47	9 47		4 10
10 00	11 40			9 55	9 55		4 04
10 08	11 48			10 03	10 03		3 58
10 16	11 56			10 11	10 11		3 52
10 24	12 04			10 19	10 19		3 46
10 32	12 12			10 27	10 27		3 40
10 40	12 20			10 35	10 35		3 34
10 48	12 28			10 43	10 43		3 28
10 56	12 36			10 51	10 51		3 22
11 04	12 44			10 59	10 59		3 16
11 12	12 52			11 07	11 07		3 10
11 20	13 00			11 15	11 15		3 04
11 28	13 08			11 23	11 23		2 58
11 36	13 16			11 31	11 31		2 52
11 44	13 24			11 39	11 39		2 46
11 52	13 32			11 47	11 47		2 40
12 00	13 40			11 55	11 55		2 34
12 08	13 48			12 03	12 03		2 28
12 16	13 56			12 11	12 11		2 22
12 24	14 04			12 19	12 19		2 16
12 32	14 12			12 27	12 27		2 10
12 40	14 20			12 35	12 35		2 04
12 48	14 28			12 43	12 43		1 58
12 56	14 36			12 51	12 51		1 52
1 04	14 44			12 59	12 59		1 46
1 12	14 52			1 07	1 07		1 40
1 20	15 00			1 15	1 15		1 34
1 28	15 08			1 23	1 23		1 28
1 36	15 16			1 31	1 31		1 22
1 44	15 24			1 39	1 39		1 16
1 52	15 32			1 47	1 47		1 10
2 00	15 40			1 55	1 55		1 04
2 08	15 48			2 03	2 03		9 58
2 16	15 56			2 11	2 11		9 52
2 24	16 04			2 19	2 19		9 46
2 32	16 12			2 27	2 27		9 40
2 40	16 20			2 35	2 35		9 34
2 48	16 28			2 43	2 43		9 28
2 56	16 36			2 51	2 51		9 22
3 04	16 44			2 59	2 59		9 16
3 12	16 52			3 07	3 07		9 10
3 20	17 00			3 15	3 15		9 04
3 28	17 08			3 23	3 23		8 98
3 36	17 16			3 31	3 31		8 92
3 44	17 24			3 39	3 39		8 86
3 52	17 32			3 47	3 47		8 80
4 00	17 40			3 55	3 55		8 74
4 08	17 48			4 03	4 03		8 68
4 16	17 56			4 11	4 11		8 62
4 24	18 04			4 19	4 19		8 56
4 32	18 12			4 27	4 27		8 50
4 40	18 20			4 35	4 35		8 44
4 48	18 28			4 43	4 43		8 38
4 56	18 36			4 51	4 51		8 32
5 04	18 44			4 59	4 59		8 26
5 12	18 52			5 07	5 07		8 20
5 20	19 00			5 15	5 15		8 14
5 28	19 08			5 23	5 23		8 08
5 36	19 16			5 31	5 31		8 02
5 44	19 24			5 39	5 39		7 96
5 52	19 32			5 47	5 47		7 90
6 00	19 40			5 55	5 55		7 84
6 08	19 48			6 03	6 03		7 78
6 16	19 56			6 11	6 11		7 72
6 24	20 04			6 19	6 19		7 66
6 32	20 12			6 27	6 27		7 60
6 40							



SPOKANE, PORTLAND AND SEATTLE RAILWAY SYSTEM

TRAINS BETWEEN PORTLAND - ST. HELENS - RAINIER - CLATSKANIE - ASTORIA - CLATSOP BEACH

Westbound, Read Down

Eastbound, Read Up

Main train schedule table with columns for train numbers, days, and stations. Includes sub-sections for 'SUNDAY SPECIAL SEASHORE LIMITED' and 'CITY TICKET OFFICES'.



TRAVELERS' AID SERVICE
Representatives of the National Association of Travelers' Aid Societies are at many of the larger stations in the United States...

SPOKANE, PORTLAND AND SEATTLE RAILWAY SYSTEM
OREGON ELECTRIC RAILWAY



PORTLAND - SALEM - ALBANY - CORVALLIS - HARRISBURG - JUNCTION CITY - EUGENE

From Portland, Read Down

To Portland, Read Up

Detailed train schedule for the Eugene line, including train numbers, days, and stations. Includes a 'Note' about additional trains for Tualatin.

PORTLAND - BEAVERTON - ORENO - HILLSBORO - FOREST GROVE

From Portland, Read Down

To Portland, Read Up

Detailed train schedule for the Beaverton line, including train numbers, days, and stations.

CONNECTIONS AT EUGENE—COOS BAY POINTS

Table showing connections at Eugene to Coos Bay points, listing train numbers and destinations.

PREVENT FOREST FIRES
A FOREST FIRE MAY BE SLOW IN STARTING, BUT WHEN IT DOES SPREAD, IT IS SURE TO GO. PREVENT FOREST FIRES—IT PAYS.



SPOKANE, PORTLAND AND SEATTLE RAILWAY SYSTEM

PORTLAND - NORTH PLAINS - WILKESBORO - VERNONIA

Table with columns for Read Down, Daily, Miles, S. P. & S. Ry., and Read Up. Lists stations from Portland to Vernonia with associated times and distances.

Table for PORTLAND - ILWACO - NORTH BEACH. Includes columns for Read Down, Daily, and Read Up. Lists stations like Astoria, Ilwaco, and North Beach.

Vertical text: x Other U. P. ferries leave Astoria for Megler at 7:00, 8:15, 9:45, 11:00 a. m.; 1:35, 2:50, 4:00, 5:15, 7:30, 10:00 p. m. daily. Returning leave Megler 7:35, 8:50, 10:20, 11:35 a. m.; 12:55, 3:25, 4:35, 8:15, 10:45 p. m. daily.

PORTLAND - PUGET SOUND - BRITISH COLUMBIA

Table with columns for Northbound and Southbound, listing stations like Vancouver, Wash., Kalama, Kelso, and Seattle with times.

CONNECTIONS AT PORTLAND

Medford - Klamath Falls - Sacramento - San Francisco - Los Angeles

Table for SOUTHERN PACIFIC LINES. Columns include Southbound Read Down, All trains daily, Pacific Time, and Northbound Read Up. Lists stations from Medford to Los Angeles.

No. 11 and 12. The Shasta, Observation, standard sleeping cars and dining cars. Conches via Medford. (Shower bath, barber, valet.) No. 13 and 14. Oregonian, standard drawing room sleepers, dining car, and coaches via Medford. No. 15 and 16. West Coast, observation, standard drawing-room and tourist sleepers, dining car and coaches to Los Angeles. No. 15. Standard sleeper to San Francisco via Klamath Falls. No. 17 and 18. Observation, Club (barber, valet, ladies' maid, showers), standard sleepers, dining car. Extra fare (\$3) limited to and from San Francisco via Klamath Falls.

COAST LINE - SAN FRANCISCO - SANTA BARBARA - LOS ANGELES

Table for COAST LINE - SAN FRANCISCO - SANTA BARBARA - LOS ANGELES. Columns include Daily Trains, 69, 75, 73, 101, 77. Lists stations from San Francisco to Los Angeles.

VALLEY LINE - SAN FRANCISCO - FRESNO - LOS ANGELES

Table for VALLEY LINE - SAN FRANCISCO - FRESNO - LOS ANGELES. Columns include Daily Trains, 25, 49, 59-62, 55, 51. Lists stations from San Francisco to Los Angeles.

SPOKANE, PORTLAND AND SEATTLE RAILWAY SYSTEM

A Vacation Land Railway



The Pacific Northwest A Great Vacation Land

UNDER the pressure of modern life, with business, industrial and household cares, school demands, etc., a summer vacation is no longer a luxury but is becoming more and more of a necessity to all.

In the great Pacific Northwest are many rare and varied resorts and retreats—seashore, mountains, rivers, lakes and forests—unexcelled in all the land, offering selection to suit any wish.

In no section of our country has Nature been more generous with her invitation to the enjoyment of her great out-of-doors or more prodigal in the provision of rich and delightful spots for the pleasure and profit of her children.

These places may be reached by short train trips, which indeed are important and interesting parts of the vacation plans.

The purpose of this booklet is briefly to describe, principally by pictures, some of these districts, the routes thither and points of attraction enroute.

Spokane to Portland Columbia River—Cascade Mountains

Some of the choicest scenery in the Northwest is enjoyed on the trip from Spokane to Portland on limited trains of the Spokane, Portland and Seattle Railway, "The North Bank Road."



BATHERS AT GEARHART, TILLAMOOK LIGHT IN THE DISTANCE

SECTION OF "THE TIDES", SEASIDE

Light face figures denote A. M. time. Dark face figures denote P. M. time. / Stop n signal. Points north of Seattle via G. N. Ry.

Olympic Hotel

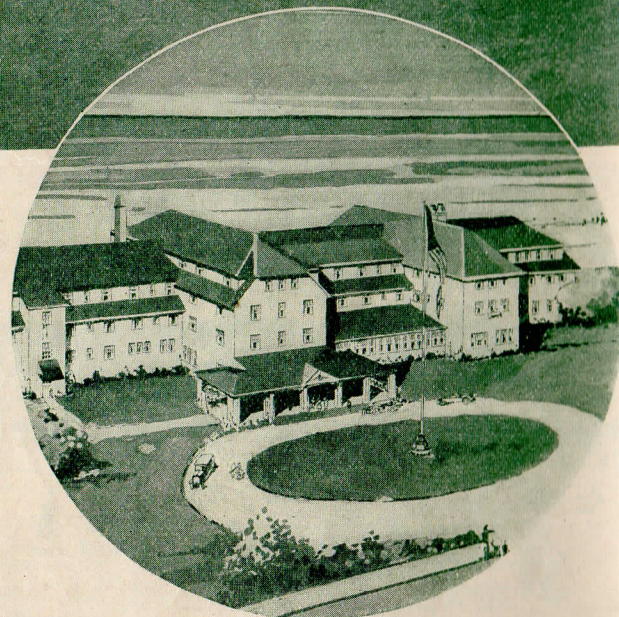


SPOKANE, PORTLAND AND SEATTLE RAILWAY SYSTEM

Follows the Columbia River Over 300 Miles



GOLF COURSE, GEARHART



HOTEL GEARHART-BY-THE-SEA

fields here and there on the uplands.

The valley narrows, the surrounding hills rise higher and closer, volcanic rocks pile up in formations of great proportions from Goodnoe westward, as if raising the curtain for the beauty and grandeur of the mountain, river and forest scenery beyond.

For many miles from Goodnoe to Hood the chaste contours of snow-capped Mt. Hood (altitude 11,225 feet) are seen.

The current of the Columbia River grows swifter as the shores narrow or the channel is cut by islands of rock; at Wishram, which is near the site of the ancient and historic Indian village of that name, are Celilo Falls, crossed by the bridge of the Oregon Trunk Railway, which leads to Central Oregon. The foot of the mountains reach the track itself along the river shore, and forests of pines and fir clothe their lower reaches. White Salmon, Carson and Stevenson are good stop-over places for visits into the fishing and mountain resort districts. At these and other stations are splendid vantage points for viewing the wonderful mountain and river scenery. At the head of the White Salmon Valley stands Mt. Adams (altitude 12,307 feet), a favorite Alpine climb. The railroad from Lyle, or a splendid motor road from Maryhill, leads over the heights to Goldendale, from which also Mt. Adams may be reached. Meritorious hot mineral springs with baths and commodious hotels are found at Carson and Cascades, and are patronized largely, especially by those in need of their curative properties.

This mountain, health, river and fishing district may be reached also by trips from Portland.

wonders. The character of the railway line here tells the genius of its builders.

The dominating browns and yellows in volcanic rock bespeak the geological origin of this region.

From Pasco to Vancouver, Wash., the north bank of the Columbia River is followed—hence the popular name of this line—through the very heart of the Cascade Mountains.

Westward for some miles from Kennewick are seen irrigated tracts of fruit, berries and grasses. Beyond them lie grazing lands in the valley and on the surrounding slopes, with grain



SPOKANE, PORTLAND AND SEATTLE RAILWAY SYSTEM

Through the Cascade Mountains to the Pacific Ocean

The country around Cascades was the scene of Indian troubles in 1856, when General Philip Sheridan, then a young lieutenant, commanded the United States soldiers who patrolled that district, and near there stands, restored, old Fort Rains, a reminder of those stirring days.

Over the mountain cliffs on the Oregon shore drop numerous crystal cataracts, and for miles may be seen the threading line of the Columbia River Highway.

At historic old Vancouver the railroad again crosses the Columbia River, then the Willamette, and follows the line of the lower harbor, past lumber mills and many other extensive industrial concerns on its double-tracked entrance to Portland.

Portland, The "Rose City"

Portland, Oregon, is the heart of this wonderful Pacific Northwest out-of-doors land.

It is a commercial center of great and growing importance, its rail and ocean trade reaches the four quarters of the earth, and its extensive banking, manufacturing and mercantile establishments incite the interest of visitors.

A city of 352,000 population, Portland is unusual in the beauty of situation, lying on both sides of the Willamette River, builded upon easy slopes and the surrounding heights, watched over by mountain ranges in three directions, while to the fourth lies the beautiful and fertile valley of the Willamette—all encompassed by the richness of evergreen forests. The climate of Portland is delightful. The summer's soft, temperate days, the cool nights, and the air from ocean and mountain bring unending rest and refreshment.

Portland has splendid hotels, homes, parks, public buildings, libraries, theaters, stores, bazaars and amusement places. A fine system of boulevards covering the city, surrounding districts of scenic advantage and the distant countryside affords visitors surprisingly delightful automobile trips. The longest and most wonderfully constructed road is the well-famed Columbia River Highway, leading from Portland eastward along the sheer cliffs of the Columbia River and through the heart of the Cascade Mountains. Indeed it reveals an amazing and changing panorama of snow-peaked mountains, Hood and Adams, the expanding waters of the Columbia, glacial-fed cataracts, forests of fir, pine, larch and cedar and matchless effects of clouds and of the rising and setting sun. The Mt. Hood Loop Highway, 160 miles round-trip, also attracts thousands of tourists.

The gardens of Portland are filled for the greater part of the year with flowers of endless variety and of prodigious bloom. Here rose culture has reached such perfection that Portland has well been named the Rose City.

The historic old battleship *Oregon* rests in her permanent berth in the Willamette River, near the business district of Portland, where she is visited by many tourists daily.

Along the Lower Columbia River Portland to Astoria and the Sea

In all this land of history, romance and scenic interest, no short trip gives the visitor so varying and complete a view of sweeping river, forest, mountain, ocean, lumbering and fishing as this.

A journey of one hundred miles in a fast train of The North Bank Road along the shores of the Willamette and Columbia Rivers between Portland, Astoria and the Pacific Ocean, gives the eye nature's true tints of a beautiful picture rare in its composition, variety and extent.

In the run of a little more than three hours are many scenes novel to the tourist—lumber mills and logging operations, river and ocean craft, fishing villages, fleets of fishermen's boats and views of forested coast ranges. For miles, soon after leaving Portland, Mt. St. Helens dominates the skyline of the Cascade Range in Washington.

On the Washington side of the Columbia, opposite Rainier, are seen the great docks and sawmills of Longview, famous Western lumber city. A ferry connects the two points.

The track follows the shore of the ever-widening and mighty Columbia River, with changing vistas, to Astoria.

Astoria

The first American settlement on the Pacific Coast was at Astoria in 1811, although that spot previously had been visited by Captain Robert Gray, an old Revolutionary War sailor, the Lewis and Clark expedition in 1805-6, as well as by a few ships engaged in trading with the Columbia River Indians. On a hill top an imposing column 126 feet high commemorates the establishment of the city, as well as the discovery of the Columbia River by Captain Gray and the explorations of Captains Lewis and Clark, while in the City Park, also occupying a site with a commanding outlook on the heights, is a replica of old Fort Astoria. The log stockade visualizes the setting of historic events portrayed in Irving's "Astoria."

Less than six years ago a devastating fire swept a great section of the business district of the city, from the ruins of which has arisen a far better city of widened streets and splendid structures of concrete and steel—hotels and business blocks—a fine demonstration of the enterprise and spirit of today, and a worthy succession to the faith of the pioneers.

Rising on the slopes above the Columbia River, the homes and public buildings overlook a vast panorama of mountain, forest, river and ocean.

Astoria's modern maritime importance is evidenced by the miles of busy waterfront, the shipping, docks, lumber and flouring mills, salmon canneries and other enterprises.

The city is the center of the salmon fishing and canning industries. The acres of net racks, the canneries and the thousands of fishing boats constitute a sight of unusual interest.

Following the extensive waterfront of the city, The North Bank Road crosses a long bridge over Young's Bay, and runs through meadows, fields of wild flowers, golden banks of Scotch broom and evergreen woods to the end of the famous Lewis and Clark Trail at Clatsop Beach on the Pacific Ocean.

Clatsop Beach, Pacific Ocean

Southward for twenty-five miles, from the mouth of the Columbia River, reach the smooth, surf-washed sands of Clatsop Beach, ending at the dominating heights of densely forested old Tillamook Head.

While wintering on Clatsop Beach over 120 years ago members of the adventurous Lewis and Clark exploring party, including Sacajawea, the Indian princess, and friendly natives, climbed Tillamook Head to Elk Creek, where a huge whale had been stranded, and from which they obtained much needed meat.

Upon the vast natural veranda of Clatsop Beach on the Pacific Ocean, hotels, cottages, homes and camps abound. There are accommodations for all desires, from the first-class hotels and roomy cottages to modest boarding places, comfortably furnished tent houses and campsites.

Clatsop Beach is devoid of the barrenness sometimes associated with the seacoast. Here are rolling, grassy meadows



SPOKANE, PORTLAND AND SEATTLE RAILWAY SYSTEM
To Clatsop Beach, Seaside, Gearhart



CLATSOP BEACH AND TILLAMOOK HEAD, SEASIDE

SEASIDE HOTEL



slumber. Clatsop Beach is supplied with pure spring water from the mountains. The climate is extremely healthful, and there are no mosquitoes or similar pests.

The surf bathing at Clatsop Beach is invigorating and delightful. The water is free from rocks, sea growths or drift matter, and the descent is gradual. The bathing hour is the rallying time for all ages.

Aside from the pleasures of bathing in the surf, lolling in the sands or tramping for miles the wave-beaten shore, visitors find that nature has been generous in furnishing many attractions for out-of-door life. Tillamook Head provides a good climb through forest of giant spruce, rewarded by grand views of ocean, mountain and timberland; mountain streams give fine fishing in season; tide-washed rivers invite canoeing or boating; trails to distant points through meadows and woods allure the pedestrian; and man has constructed splendid high-ways and bridle paths.

Clatsop Beach is served by electric light and mountain water. Hotels and restaurants make a specialty of crabs, clams and other sea foods, with dairy products, poultry and eggs from near-by ranches.

Clatsop Beach has enjoyed a fine growth in population from large numbers of people who appreciate the delightful advantages of homes at the seashore, and who have builded hundreds of cottages, large and small, facing the sea, in the meadows or near the friendly spruce groves.

The United States Army has a large ocean-side summer camp ground, Camp Clatsop near Gearhart, for the use of State military forces.

and groves of evergreen trees, with a background of primitive forest reaching to the nearby mountain tops.

It is an all-year resort, for freezing weather is seldom known, and the ever-refreshing and recreating influence of the soft salt air and music of the sea waves in surroundings of unusual richness and beauty, entice lovers of nature and the weary to this spot at all seasons. Spring and autumn are delightful. But the glory of the year is summer, when conditions here reach perfection, with azure sky, argent cloud, ocean's deep blue, salt breeze, soft days and cool nights inviting open fires, blankets and



SPOKANE, PORTLAND AND SEATTLE RAILWAY SYSTEM
A Vacation Land Railway

No other Pacific Ocean resort in the Northwest offers lovers of the sea so great a variety of attractions, amusements and accommodations as Clatsop Beach, centered at Seaside and Gearhart. Indeed it well merits the name "The Premier Ocean Resort of the Northwest."

Gearhart

At Gearhart an eighteen-hole golf course is laid upon rolling sweeps between ocean front and evergreen forest. Its natural situation is a real joy to lovers of the game. Visitors have the use of the links by the payment of a greens fee. A salt-water natatorium is nearby.

Hotel Gearhart-by-the-Sea occupies a most sightly location with commanding views of ocean, forest and golf links. It is unusually attractive in design and appointments, with accommodations for 175 guests; its rooms are single, double and en suite, most of them with bath, affording accommodations for the best class of patronage.

A few miles north of Gearhart still rests the hull and one mast of the ship *Peter Iredale*, wrecked many years ago.

Seaside

Seaside is a city of several thousand during the summer season, and hotels, restaurants, boarding places, and stores are open all the year. It is well equipped with modern improvements—paved streets, light, water and a long ocean front promenade.

Seaside's fine public golf course is largely patronized the year around. It is splendidly located on both sides of the beautiful Necanicum River, near The Tides apartments, and reaches toward the ocean front. A small greens fee is charged visitors.

Seaside has numerous hotels, restaurants, boarding houses, cottages and tents for rent, salt water natatoria, churches, stores, markets, theatres, dance pavilions, day nursery for children, riding horses, etc. Seaside is the end of the historic Lewis and Clark Trail. Here, appropriately marked, is the site of the salt camp, where Lewis and Clark in 1805-6 laboriously extracted from the briny water of the Pacific, the salt used in preserving elk meat and curing skins.

The large Seaside Hotel merits special consideration. It occupies a commanding site on the promenade and ocean front; provides accommodation for 250 guests, and is designed and

furnished to meet the requirements of the best resort patronage. A large number of single and double rooms and suites have private baths.

It and other hotels, cottages, boarding and rooming houses, tent and camp facilities provide a range in accommodation and price to meet varying wishes or needs.

Cannon Beach

Ten miles south of Seaside by a good motor road leading through splendid forest and over Tillamook Head is Elk Creek, beyond which for twelve miles stretch the wide, hard sands of Cannon Beach, a most beautiful combination of fantastic rocks, forests and ocean fronts. This picturesque beach derives its name from an ancient bronze cannon found in the surf-washed wreckage of some old wooden frigate.

Cragged headlands project into the breakers and a series of solitary, imposing pillars of rock lend a distinction not exceeded on the entire Western Coast. Rustic hotels, cottages and camps are found fronting the uncanny "singing sands" of this beach.

North Beach

On the Washington side of the Columbia River, extending northward, is North Beach. Its chief attraction is the beach itself. It faces the Pacific for twenty-five miles, and at low tide affords a boulevard of compact sand the entire distance some four hundred feet wide.

Summer hamlets sheltered in pretty groves of spruce are strewn along the shore in goodly number, each provided with comfortable hotel, cottage and camp accommodations. The principal points are Seaview, Long Beach and Ocean Park.

North Beach is ideal for surf bathing. The descent is so gradual that bathers wade out a long distance before getting into deep water. At night the great delight is building bonfires from the vast supply of drift wood.

It is a great place for the pedestrian, who may take short or long walks to points of changing interest, including the ocean itself, the North Head promontory and Willapa Harbor.

\$3 SUNDAY and \$4 WEEK-END ROUND-TRIP FARES FROM PORTLAND To Clatsop Beach Points

\$4.00 tickets on sale Friday, Saturday and Sunday of each week, until September 30, 1928, return limit Tuesday following. \$3.00 tickets Sundays, until September 2, 1928; also September 3, 1928; return same day.

WEEK-END ROUND-TRIP FARES FROM PORTLAND To Cascade Mountain Points:

Carson.....	\$ 2.30	Granddalles.....	\$ 4.55	Underwood.....	\$ 3.22
Cascades.....	1.90	Hood.....	3.10	Wahclella.....	1.75
Collins.....	2.70	Lyle.....	4.12	White Salmon.....	3.42
Cooks.....	2.70	Stevenson.....	2.10		

In effect Saturday and Sunday to September 30, and September 4, 1928; return limit following Monday, except tickets sold September 1, 2, 3, and 4 will be limited to September 4, 1928.

CASCADE MOUNTAIN RESORTS—OREGON

Foley Springs, Ore.	Foley Hot Springs.	All Year...	*50	\$4.00 up	†\$25, Am. Plan
Belknap Spgs. Ore.	Belknap Hot Sp'gs. Hotel and Cabins	All Year...	*46	4.00 "	25, inc. baths.
McKenzie Bridge, Ore.	Cascade Resort Hotel			3.50 "	21, Am. Plan
	Log Cabin Hotel	All Year...	35	3.00 "	18, " "
	Hotel McKenzie	Apr.-Oct...	24	2.50 "	15, " "
	Spark's Hotel			3.50 "	21, " "
Vida, Ore.	Nimrod Inn	Apr.-Oct...	30	3.50 "	21, " "

*Indicates number of rooms, otherwise number of guests.
 †Includes mineral baths.

SUMMER FARES TO CLATSOP BEACH AND NORTH BEACH POINTS

Round-trip fares from points shown below, and other stations in the Northwest will be in effect daily to September 30, 1928, with return limit October 31. Stopover granted at any point.

WASHINGTON		OREGON		MONTANA	
Aberdeen.....	\$13.10	Albany.....	\$ 8.75	Stites.....	\$28.25
Centralia.....	10.20	Baker.....	23.50	Wallace.....	30.55
Colfax.....	23.45	Bend.....	18.50		
Davenport.....	28.40	Corvallis.....	9.40	Anaconda.....	\$41.40
Dayton.....	19.90	Eugene.....	11.00	Billings.....	51.50
Eureka.....	18.10	Forest Grove.....	6.50	Bozeman.....	44.90
Goldendale.....	11.90	Hillsboro.....	6.15	Butte.....	40.20
Kennewick.....	17.40	Hood River.....	8.45	Deer Lodge.....	38.25
Lyle.....	9.65	La Grande.....	20.70	Glendive.....	62.35
Palouse.....	25.25	Portland.....	5.00	Great Falls.....	44.90
Pasco.....	17.50	Redmond.....	17.60	Hamilton.....	36.75
Pullman.....	24.50	Salem.....	7.50	Helena.....	40.15
Ritzville.....	21.90	The Dalles.....	9.60	Kalispell.....	37.00
Seattle.....	14.90			Lewistown.....	50.35
Spokane.....	25.25			Livingston.....	46.00
Tacoma.....	12.80			Miles City.....	58.60
Vancouver.....	5.75			Missoula.....	34.45
Walla Walla.....	18.10				
Wenatchee.....	23.80				
White Salmon.....	9.10				
Yakima.....	21.40				



SPOKANE, PORTLAND AND SEATTLE RAILWAY SYSTEM

CONNECTIONS AT PORTLAND UNION PACIFIC SYSTEM

PORTLAND - BOISE - OGDEN - SALT LAKE - DENVER - OMAHA

Table showing train schedules between Portland and various cities including Boise, Ogden, Salt Lake, Denver, and Omaha.

CONNECTIONS AT SPOKANE GREAT NORTHERN RAILWAY

SPOKANE - MARCUS - GRAND FORKS - OROVILLE - NELSON

Table showing train schedules between Spokane and various cities including Marcus, Grand Forks, Oroville, and Nelson.

h Tues., Thurs. g Mon., Wed., Fri.

SPOKANE, COEUR D'ALENE & PALOUSE RY. CO.

SPOKANE - COLFAX - PALOUSE - MOSCOW - POTLATCH

Table showing train schedules between Spokane and various cities including Colfax, Palouse, Moscow, and Potlatch.

* Daily Except Sunday.

SPOKANE, COEUR D'ALENE & PALOUSE RY. CO.

SPOKANE - COEUR D'ALENE - HAYDEN LAKE

Table showing train schedules between Spokane and various cities including Hayden Lake.

Light face figures denote A. M. time. Dark face figures denote P. M. time. / Stop on signal.

CONNECTIONS AT SPOKANE NORTHERN PACIFIC RAILWAY

SPOKANE - PALOUSE - PULLMAN - MOSCOW - LEWISTON

Table showing train schedules between Spokane and various cities including Palouse, Pullman, Moscow, and Lewiston.

SPOKANE INTERNATIONAL RAILROAD-CANADIAN PACIFIC RAILWAY

SPOKANE - CALGARY - EDMONTON - WINNIPEG

Table showing train schedules between Spokane and various cities including Calgary, Edmonton, and Winnipeg.

*Except Sunday. Sundays arrives Edmonton 11:00 p. m.; leaves 7:00 a. m.

CONNECTIONS AT PASCO

NORTHERN PACIFIC RAILWAY

PASCO - PROSSER - TOPPENISH - YAKIMA - ELLENSBURG

Table showing train schedules between Pasco and various cities including Prosser, Toppenish, Yakima, and Ellensburg.

PASCO - ELTOPIA - CONNELL - RITZVILLE - SPRAGUE

Table showing train schedules between Pasco and various cities including Eltopia, Connell, Ritzville, and Sprague.

PASCO - WALLA WALLA - PENDLETON

Table showing train schedules between Pasco and various cities including Walla Walla and Pendleton.

† Motor.

* Daily except Sunday.

SPOKANE, PORTLAND AND SEATTLE RAILWAY SYSTEM



Low Round Trip Fares East!

ALL SUMMER

Daily, to September 30, 1928 Return Limit October 31st

Round Trip Fares From Portland, Oregon

Table showing round trip fares from Portland to various cities including Boston, Chicago, and Detroit.

SIMILAR FARES TO OTHER POINTS

ORIENTAL LIMITED NORTH COAST LIMITED

GREAT NORTHERN TO CHICAGO NORTHERN PACIFIC TO CHICAGO

For full information phone or write agents of the S. P. & S., Oregon Trunk, Oregon Electric and United Railways or

L. F. KNOWLTON, City and Traveling Passenger Agent

Phone BRoadway 0920

922 Chamber of Commerce Building Portland, Oregon

S. P. & S. Transportation Company

SUPERIOR STAGE SERVICE BETWEEN PORTLAND, ST. HELENS, VERNONIA, RAINIER, (LONGVIEW), CLATSKANIE, ASTORIA AND SEASIDE

Stages leave Sixth Street Stage Terminal, Salmon, Fifth to Sixth Street, at hours shown: Stage Depot, Park and Yamhill Streets, ten minutes later.

For Astoria, Rainier, (Longview), and St. Helens, daily: 7:30, 9:00 a. m., 12:00, 2:00, 4:00, 6:00 and 10:30 p. m. daily.

For Seaside, daily: 7:30, 9:00 a. m., 12:00, 2:00, 4:00 and 10:30 p. m.

For Rainier and St. Helens, daily: 7:30, 9:00, 11:00 a. m., 12:00, 2:00, 4:00, 5:00, 6:00 and 10:30 p. m. daily.

For St. Helens and Scappoose: 7:30, 9:00, 11:00 a. m.; 12:00, 1:00, 2:00, 4:00, 5:00, 6:00, 7:00, 10:30 p. m. daily, and 12:00 midnight Saturdays and Sundays.

For Vernonia, daily: 7:30 a. m., 1:00 and 5:00 p. m., and 4:20 p. m. and 8:00 p. m., Sunday only.

For Keasey: 1:00 p. m. daily, except Sundays, and 4:20 p. m. Sundays only.

TICKETS INTERCHANGEABLE

Round-trip Stage Tickets will be honored on trains between points served by both stages and trains. One-way stage tickets will not be honored by the S. P. & S. Ry. except on stages except between Warrenton and Fort Stevens branch stations, where tickets between points east of Astoria and such stations will be honored.

SIXTH STREET STAGE TERMINAL

Salmon, 5th to 6th Sts.

Telephone ATwater 3301



STAGE DEPOT

Park and Yamhill Streets

Telephone BEacon 8181

Special Round Trip Fares to

CALIFORNIA

are in effect from SPOKANE and the INLAND EMPIRE via the

Spokane, Portland and Seattle Railway

on either the NORTH COAST LIMITED, 7:55 p. m. from the N. P. Station or the ORIENTAL LIMITED, 7:20 a. m. from the G. N. Station. Immediate connections in Portland for the South.

Full information relative to fares, reservations, accommodations, etc., at

Davenport Hotel Ticket Office

M. A. FUEGY, City Pass. Agt.

Phone MAin 4238

J. T. HARDY, General Agent

Oregon Electric Railway Superior Train Service

through the heart of the

WILLAMETTE VALLEY

Four trains daily each way between Portland and Eugene, Corvallis and Albany; six between Portland, Salem and other intermediate points.

(See schedules pages 9 and 10)

Through tickets are sold to and from points on the Oregon Electric Railway via Portland and all lines north and east.

Sleeping and Parlor Car Fares

INCLUDING SURCHARGES

Subject to change without notice.

Table showing sleeping and parlor car fares between various cities including Albany, Astoria, Bend, Billings, Bozeman, Butte, Camas, Chicago, Corvallis, Denver, Duluth, Eugene, Fargo, Gearhart, Granddallas, Great Falls, Havre, Oakland, Kansas City, Lincoln, Livingston, Los Angeles, Lyle, Minneapolis, Missoula, Oakland, Omaha, Pasco, Portland, St. Louis, St. Paul, Sacramento, Salem, San Francisco, Seaside, Spokane, Stevenson, Vancouver, White Salmon, and Wishram.

*No through car; fare applies for continuous trip via direct connections. The fare for a section is the combined fare of an upper and a lower berth. The fare for an upper berth is 80% of the lower berth fare. A compartment is a private room with lower and upper berths and toilet; a drawing room has a divan berth in addition. Occupancy of a drawing room requires two adult rail tickets, or their equivalent. For a compartment 1 1/2 tickets are required.

STAGE AND BOAT CONNECTIONS

To points in Oregon and Washington reached from stations on the Spokane, Portland and Seattle Ry. east of Portland and Oregon Trunk Ry.

Destination	From	Conveyance	Days	Time	Fare	Free Baggage Lbs.
Oregon:						
Arlington	Roosevelt	Ferry	Daily	Frequent	\$0.30	Hand
Ashwood	Madras	Auto Stage	Ex. Sun.	7:00 AM	2.50	50
Boulder	Alderdale	Ferry	Daily	Frequent	1.00	Hand
Burns	Bend	Auto Stage	M. Th. Sat.	8:45 AM	9.00	Hand
Chiloquin	Bend	Auto Stage	Daily	8:00 AM	4.60	Hand
Crescent	Bend	Auto Stage	Daily	8:00 AM	2.25	30
Criterion	Maupin	Auto Stage	Tu, Fri.	8:00 AM	1.00	Hand
Wife	Prineville	Auto Stage	Mo, Th.	7:30 AM	4.50	Hand
Wt. Klamath	Bend	Auto Stage	Daily	8:00 AM	4.10	30
Wt. Rock	Bend	Auto Stage	Daily	9:00 AM	5.00	25
Wremont	Bend	Auto Stage	Daily	9:00 AM	4.50	25
Geneva	Culver	Spl. Auto			7.00	
Grandview	Culver	Spl. Auto			5.00	
Grant	Maryhill	Ferry	Daily	Frequent	1.50	Hand
Grizzly	Madras	Auto Stage	Ex. Sun.	7:00 AM	1.75	40
Hay Creek	Madras	Auto Stage	Ex. Sun.	7:00 AM	1.00	50
Hood River	Underwood	Spl. Autos	or by foot	over Bridge	3.10	Hand
Hood River	WhiteSalm'n	Spl. Autos	or by foot	over Bridge		
Klamath Falls	Bend	Auto Stage	Daily	8:00 AM	5.50	25
Lakeview	Bend	Auto Stage	Daily	9:00 AM	12.50	25
Lamonta	Culver	Spl. Auto			4.00	
La Pine	Bend	Auto Stage	Daily	8:30 AM	2.00	25
Millcreek	Bend	Auto Stage	M. Th. Sat.	8:45 AM	3.15	25
Mitchell	Prineville	Auto Stage	Ex. Sun.	8:30 AM	4.00	Hand
Paisley	Bend	Auto Stage	Daily	9:00 AM	9.50	25
Paulina	Prineville	Auto Stage	Ex. Sun.	8:30 AM	5.00	Hand
Post	Prineville	Auto Stage	Ex. Sun.	8:30 AM	2.50	25
Riley	Bend	Auto Stage	M. Th. Sat.	8:45 AM	7.35	25
Rowena	Lyle	Ferry	Daily	Frequent	.25	Hand
Silver Lake	Bend	Auto Stage	Daily	9:00 AM	6.00	25
Sisters	Redmond	Auto	Ex. Sun.	8:30 AM	2.00	Hand
Summer Lake	Bend	Auto Stage	Daily	9:00 AM	7.35	25
The Dalles	Granddalles	Ferry	Daily	Frequent	.25	50
Tumalo	Deschutes	Auto	Ex. Sun.	8:15 AM	.50	50
Tygh Valley	Sherar	Auto Stage	Ex. Sun.	2:00 PM	.50	Hand
Umatilla	Plymouth	Ferry	Daily	Day and Night	.50	Hand
Warm Springs	Sherar	Auto Stage	Ex. Sun.	2:00 PM	1.00	Hand
Warm Springs	Gateway	Stage	Ex. Sun.	9:30 AM	1.50	Hand
Wspends in Winter	Winter					
Washington:						
Appleton	Lyle	Stage	Ex. Sun.	6:30 AM	1.50	Hand
Attalia	Hover	Ferry	Daily	Frequent	.25	100
Battle Ground	Vancouver	Auto Stage	Daily	Frequent	.75	Hand
Bickleton	Roosevelt	Auto Stage	Ex. Sun.	2:00 PM	3.00	Hand
Brush Prairie	Vancouver	Auto Stage	Daily	Frequent	.50	Hand
Cheney	So. Cheney	Spl. Auto			1.00	Hand
Chenoweth	Underwood	Stage	Ex. Sun.	12:15 PM	.75	Hand
Cleodell	Auto on call				2.50	Hand
Dot	Roosevelt	Auto Stage	Ex. Sun.	2:00 PM	2.00	Hand
Gilmer	WhiteSalm'n	Auto Stage	Ex. Sun.	1:00 PM	1.50	Hand
Glenwood	Underwood	Auto on call			10.00	Hand
Glenwood	WhiteSalm'n	Auto Stage	Ex. Sun.	1:00 PM	2.50	Hand
Goldendale	Maryhill	Auto Stage	Daily	All trains	1.00	Hand
Govern't Spgs.	Carson	Auto	Daily	11:00 AM	Free	Hand
Guler	Underwood	Auto on call			8.00	Hand
Guler	WhiteSalm'n	Auto Stage	Ex. Sun.	1:00 PM	2.00	Hand
Hanford	Kennewick	Auto Stage	Daily	8:00 AM	2.50	Hand
Hockinson	Vancouver	Auto Stage	Daily	11:15 AM	.75	Hand
Husum	Underwood	Auto on call			7.50	Hand
Husum	WhiteSalm'n	Auto Stage	Ex. Sun.	1:00 PM	.75	Hand
La Center	Vancouver	Auto Stage	Ex. Sun.	10:30 PM	.75	Hand
Laurel	WhiteSalm'n	Auto Stage	Ex. Sun.	1:00 PM	2.00	Hand
Liberty Bond	Lyle	Stage	Ex. Sun.	6:30 AM	2.00	Hand
Moffett's Spgs.	Cascades	Auto	Daily	All trains	.25	Hand
Orchards	Vancouver	Auto Stage	Daily	Frequent	.25	Hand
Richland	Kennewick	Auto Stage	Daily	8:00 AM	.75	Hand
St. Martin's Spg.	Carson	Auto	Daily	All trains	.75	Hand
Shipherd's Spgs.	Carson	Auto	Daily	All trains	.75	Hand
Snowden	WhiteSalm'n	Auto Stage	Ex. Sun.	7:00 AM	1.50	Hand
The Cedars	Underwood	Auto on call			4.00	Hand
Trout Lake	Underwood	Auto on call			8.00	Hand
Trout Lake	WhiteSalm'n	Auto Stage	Ex. Sun.	1:00 PM	2.00	Hand
White Bluffs	Kennewick	Auto Stage	Daily	8:00 AM	3.00	Hand
White Salmon	WhiteSalm'n	Auto	Daily	by Appointment	.35	Hand
White Salmon	Underwood	Spl. Auto on Call			.50	Hand
White Salmon	Bridge	Underwood	Spl. Auto on Call		.50	Hand
Yacolt	Vancouver	Auto Stage	Daily	Frequent	2.00	Hand

† Suspends in Winter. * Suspends only in case of heavy ice in river. The information shown above is prepared from the best data obtainable, but it is subject to change without notice and neither service nor rates are guaranteed.

GENERAL OFFICES CHAMBER OF COMMERCE BUILDING 271 Stark Street, corner Fourth PORTLAND, OREGON

OFFICERS

W. F. TURNER.....President.....Portland, Oregon

OPERATING DEPARTMENT

A. J. DAVIDSON.....General Manager.....Portland, Oregon
G. E. VOTAW.....Superintendent.....Portland, Oregon

PASSENGER AND FREIGHT TRAFFIC DEPARTMENTS

R. H. CROZIER.....General Passenger Agent.....Portland, Oregon
R. W. PICKARD.....General Freight Agent.....Portland, Oregon
J. M. BALLINGALL.....Assistant General Freight Agent.....Portland, Oregon
J. C. ABBETT.....Advertising Agent.....Portland, Oregon

REPRESENTATIVES

ALBANY, ORE......**H. C. REEVES** (Phone M. 250)... Agent, 5th and Lyon
ASTORIA, ORE......**J. J. HOYDAR**..... General Agent
F. L. WEBER..... Traveling Freight and Pass. Agent
Telephone 113, S. P. & S. Ry. Station, 20th and Commercial Sts.

BEND, ORE......**A. F. SHUGERT** (Phone 54)..... Agent, Union Station
CORVALLIS, ORE......**G. W. SEXSMITH** (Phone 467)..... Agt. O. E. Ry. Sta.
EUGENE, ORE......**F. S. APPELMAN** (Phone 140)..... Agent, O. E. Ry. Sta.
FOREST GROVE, ORE......**G. H. RUSSELL** (Phone Main 351) Agt., O. E. Ry. Sta.
HARRISBURG, ORE......**R. W. KESSELL** (Phone 292)..... Agt., O. E. Ry. Station
HILLSBORO, ORE......**L. D. SHERMAN** (Phone M. 541)..... Agt., O. E. Ry. Sta.
JUNCTION CITY, ORE......**L. W. MALLORY** (Phone M. 382)..... Agt., O. E. Ry. Sta.
PORTLAND, ORE......**A. L. ARNOLD**—Agent, Consolidated Ticket Office, Broadway and Morrison Sts. Telephone Bdy. 5631.

L. F. KNOWLTON, City and Traveling Pass. Agent, 922 Chamber of Commerce Building.
J. C. MOORE..... Gen'l Agent, Freight Department
H. W. SHIELDS..... Contracting Freight Agent
R. E. MEATS..... Contracting Freight Agent
E. R. SCHULTZ..... Contracting Freight Agent
J. C. WRIGHT..... Trav. Freight and Pass. Agent
L. S. DAVIS..... Trav. Freight and Pass. Agent
928 Chamber of Commerce Building.
H. SHEEDY, Agent, O. E. Ry. Station, 10th and Hoyt Sts.
C. O. BUTLER, Tkt. Agt., O. E. Ry., Jefferson St. Sta.
J. L. MILLER, Tkt. Agt., Union Station, Foot of 6th Street. Telephone Broadway 0802.

REDMOND, ORE......**A. P. MEYERS** (Phone Black 79), Agent, Union Station
SALEM, ORE......**J. W. RITCHIE** (Phone M. 727), Agt., O. E. Ry. Station
J. H. BRADY (Phone M. 727)..... Trav. Freight Agent
SAN FRANCISCO, CAL......**F. R. FORBES**..... Dist. Freight & Pass. Agent
E. F. ROBERTS..... City Frt. and Pass. Agent
902 Monadnock Building.

SEASIDE, ORE......**S. A. SEXSMITH** (Phone 45)..... Agent, S. P. & S. Ry. Station.

SPOKANE, WASH......**J. T. HARDY**..... General Agent, Davenport Hotel
M. A. FUEGY..... City Pass. Agent, Davenport Hotel
J. G. TRAVERS..... City Frt. Agt., Davenport Hotel
H. W. GREEN..... Ticket Agent, Gt. Nor. Ry. Station
T. A. BRADY..... Ticket Agent, Nor. Pac. Ry. Station
VANCOUVER, WASH......**W. R. EMERSON** (Phone 735) Ticket Agent, S. P. & S. Ry. Station.
J. H. CORBETT..... Freight Agt., S. P. & S. Ry. Depot

PASSENGER STATIONS

PORTLAND, ORE...... S. P. & S. Ry., Union Station, Foot of Sixth Street.
Oregon Electric Ry., Oregon Electric Station, Tenth and Hoyt Streets, Sixth Street Terminal, Salmon, 5th to 6th Streets, and Jefferson Street Station, Front and Jefferson Streets.

SPOKANE, WASH...... Northern Pacific Station. Tracks No. 3 and 4.
Great Northern Station. Tracks No. 1 and 2.

The representatives of these railroads named above, and at other points will gladly quote passenger fares and freight rates, make reservations for sleeping car accommodations, and give full details regarding tickets and freight to or from points throughout the United States and Canada.

The Spokane, Portland and Seattle, Oregon Trunk and Oregon Electric Rys. are affiliated with the Northern Pacific, Great Northern and Chicago, Burlington & Quincy Rys. Representatives and agents of these lines, and others throughout the East and West, will supply full information regarding these lines, or communications may be addressed to

R. H. CROZIER, General Passenger Agent, S. P. & S. Ry.
PORTLAND, OREGON

Seattle Steamer a.m. during 5.30 P.M.

