

Spokane, Portland and Seattle Railway Passing McNary Dam on the Columbia River



OCTOBER 29, 1967
Subject to change without notice



The Northwest's Own Railway

THROUGH SERVICE

VIA

NORTH COAST
LIMITED

EMPIRE
BUILDER



GREAT NORTHERN

TIME TABLES

TRAVEL THE
COLUMBIA RIVER
SCENIC ROUTE
THROUGH THE
CASCADE RANGE

OCTOBER 29, 1967
Subject to change without notice



The Northwest's Own Railway

THROUGH SERVICE

VIA

NORTH COAST
LIMITED

EMPIRE
BUILDER



GREAT NORTHERN

TIME TABLES

TRAVEL THE
COLUMBIA RIVER
SCENIC ROUTE
THROUGH THE
CASCADE RANGE



SPOKANE, PORTLAND AND SEATTLE RAILWAY SYSTEM

S. P. & S. RY. — OREGON TRUNK RY. — OREGON ELECTRIC RY. — (Subsidiaries of Northern Pacific and Great Northern Railways)

TRANSCONTINENTAL TRAIN SERVICE — BETWEEN PORTLAND, PASCO AND EAST

SPOKANE, PORTLAND AND SEATTLE, NORTHERN PACIFIC AND CHICAGO, BURLINGTON AND QUINCY RAILWAYS

Westbound, Read Down		Eastbound, Read Up			
Daily The Main-streeter C.B.&Q. 47	Daily North Coast Ltd. 25	Chicago, Burlington and Quincy Railway (Central Time)	Mil. P't	Daily North Coast Ltd. 26	Daily The Main-streeter C.B.&Q. 48
10.40	1.15	Lv Chicago (Union Station) Ar	2327	2.55	7.40
11.17	1.52	Lv Aurora Ar	2289	2.12	6.40
1.25	3.26	Lv Savanna Ar	2182	12.34	4.23
4.40	5.36	Lv LaCrosse Ar	2030	10.16	1.40
7.30	8.00	Ar St. Paul (Union Station) Lv	1900	8.20	11.10
N.P. 1					
Northern Pacific Railway					
8.40	8.25	Lv St. Paul (Union Station) Ar	1900	7.30	10.20
9.15	9.00	Lv Minneapolis (Hen.AV.Stn.) Ar	1890	7.00	9.47
The Mainstreeter					
7.25	7.38	Lv Duluth Ar	1881	6.57	11.10
7.30	7.38	Lv Superior Ar	1877	6.45	11.10
Vista-Dome North Coast Limited					
11.53	11.05	Lv Staples Ar	1733	4.33	6.56
2.35	1.03	Lv Fargo Ar	1622	2.27	4.15
4.32	2.42	Lv Jamestown Ar	1530	12.52	2.25
6.20	4.15	Lv Bismark Ar	1428	11.07	12.45
6.07	3.42	Lv Mandan (Mountain Time) Ar	1423	9.51	11.16
8.56	5.29	Lv Dickinson Ar	1322	8.07	8.41
11.45	7.27	Lv Glendive Ar	1217	6.04	5.49
1.18	8.43	Lv Miles City Ar	1138	4.38	4.16
2.22	9.44	Lv Forsyth Ar	1093	3.47	3.05
4.58	11.34	Lv Billings Ar	991	1.58	12.53
The Mainstreeter					
7.40	1.42	Lv Livingston Ar	875	11.51	10.25
8.47	2.27	Lv Bozeman Ar	851	11.06	9.35
11.30	5.01	Lv Butte Ar	756	8.40	6.20
11.20	4.35	Lv Helena Ar	753	8.40	6.45
1.22	6.01	Lv Garrison Ar	704	7.24	4.52
3.14	7.17	Lv Missoula Ar	636	6.03	3.15
4.04	7.56	Lv Paradise (Pacific Time) Ar	565	3.14	12.18
6.21	8.00	Lv Sandpoint Ar	446	1.00	9.48
7.53	11.17	Lv Athol Ar	418	1.00	9.12
7.52	11.17	Ar Spokane (N.P. Station) Lv	378	11.44	8.30
Vista-Dome North Coast Limited					
8.21	11.30	Lv Spokane (N.P. Station) Ar	378	11.29	8.01
11.26	2.15	Ar Pasco Lv	231	8.49	5.00
S.P.S. No. 3					
12.45	2.45	Lv Pasco Ar	231	7.00	1.55
2.51	4.40	Ar Wishram Lv	106	5.00	11.53
4.50	6.30	Ar Vancouver Lv	10	3.22	10.10
5.30	7.00	Ar Portland (Union Station) Lv	0	3.00	9.45
S.P.S. No. 1					
12.45	2.45	Lv Pasco Ar	231	7.00	1.55
2.51	4.40	Ar Wishram Lv	106	5.00	11.53
4.50	6.30	Ar Vancouver Lv	10	3.22	10.10
5.30	7.00	Ar Portland (Union Station) Lv	0	3.00	9.45

21-43	C.B.&Q. Connections at Billings for Denver & Mo. River Pts.	42-20
5.00	Lv Kansas City (CB & Q) Ar	12.10
6.30	Lv St. Joseph Ar	10.30
10.25	Lv Omaha Ar	7.30
12.10	Lv Lincoln Ar	6.10
7.45	Ar Billings Lv	10.10

④ Bus from Logan.
 ⑤ Bus from Garrison.

STANDARD TIME

Light face figures denote A.M. time. Bold face figures denote P.M. time. Ar. Arrive Lv. Leave. f Stop on Signal.

EQUIPMENT

VISTA-DOME NORTH COAST LIMITED BETWEEN CHICAGO AND PORTLAND

All Lightweight Equipment

S. P. & S. 1-2, N. P. 25-26, C. B. & Q. 25-26

STANDARD SLEEPER-CLUB LOUNGE CAR — With 6 roomettes, 3 double bedrooms. Between Pasco and Portland. (Car 10 westbound, Car 20 eastbound.)

"LOUNGE IN THE SKY" — Vista-Dome Sleeper-Buffer-Lounge, Between Chicago-Pasco. Roomettes, Duplex Single Rooms, Bedrooms; (Car 255 westbound, Car 265 eastbound.)

SLUMBER - COACH — Between Chicago and Pasco. Sleeping accommodations may be purchased with coach tickets (SC-25 westbound, SC-26 eastbound.)

STANDARD SLEEPING CAR — Between Chicago and Portland. Newest type all-room car. 4 double bedrooms, 6 roomettes, 8 duplex roomettes, (258 westbound, 268 eastbound.)

VISTA-DOME COACH — Between Chicago and Portland. Chaise lounge "sleepy hollow" seats with leg rests for reclining full length. (C250 westbound, C260 eastbound). Seats reserved in advance. Seat charge.

DELUXE COACH — Between Spokane and Portland, 56 reclining seats. (Advanced reservations required.) 50c seat charge.

LEWIS & CLARK TRAVELLER'S REST BUFFET-LOUNGE CAR — Between Chicago and Pasco. Select and a la carte meals, snacks and beverages, magazines, lounge section.

DINING CAR SERVICE — Between Chicago and Portland. Club breakfasts, Table d'hote dinner, Table d'hote luncheon. Special plate luncheons and dinners. Also a la carte service.

STEWARDESS SERVICE — A Stewardess is a member of the train personnel between Chicago and Pasco.

TICKETS — All classes of regular and reduced rate rail tickets will be honored for passage on the North Coast Limited except during period June 1st through September 22nd and December 15th through January 4th each year. Half rate tickets will not be honored.

THE MAINSTREETER

BETWEEN CHICAGO AND PORTLAND

S. P. & S. 3-4, N. P. 1-2, C. B. & Q. 47-48

DELUXE RECLINING SEAT COACHES — Between Chicago and Pasco. Between Pasco and Portland. Between Spokane and Portland.

DINING CAR SERVICE — Between St. Paul and Pasco.

SPOKANE, PORTLAND AND SEATTLE RAILWAY SYSTEM

S. P. & S. RY. — OREGON TRUNK RY. — OREGON ELECTRIC RY. — (Subsidiaries of Northern Pacific and Great Northern Railways)

TRANSCONTINENTAL TRAIN SERVICE — BETWEEN PORTLAND, SPOKANE AND EAST

VIA CHICAGO, BURLINGTON & QUINCY, GREAT NORTHERN AND SPOKANE, PORTLAND AND SEATTLE RAILWAYS

Westbound, Read Down		Eastbound, Read Up				
Daily Western Star No. 47	Daily Empire Builder No. 31	Chicago, Burlington and Quincy Railroad (Central Time)	Miles from Portland	Daily Empire Builder No. 32	Daily Western Star No. 24	Daily No. 48
10.47	1.15	Lv Chicago (Union Stn) Ar	2260	2.55	11.10	7.40
11.17	1.52	Lv Aurora Ar	2222	2.12	10.20	6.40
1.25	3.26	Lv Savanna Ar	2115	12.34	8.40	4.23
4.40	5.36	Lv LaCrosse Ar	1963	10.16	6.16	1.40
7.30	8.00	Ar St. Paul (Union Stn) Lv	1833	8.10	4.20	11.10
Great Northern Railway						
No. 3	No. 27				No. 28	No. 4
7.30	9.00	Lv St. Paul (Union Stn) Ar	1833	6.35	3.30	7.50
7.55	9.35	Lv Minneapolis (GN Stn) Ar	1822	6.00	2.50	7.20
11.20	10.55	Lv Wilmar Ar	1731	4.25	1.00	6.00
12.47	12.47	Lv Breckenridge Ar	1618	2.20	1.00	6.00
9.08	11.01	Lv St. Cloud Ar	1571	1.20	9.50	2.40
11.01	12.21	Lv Fergus Falls Ar	1493	1.00	9.50	2.40
12.21	2.25	Lv Fargo Ar	1447	11.00	7.41	12.57
1.50	4.32	Lv Grand Forks Ar	1338	9.05	5.50	9.00
6.00	6.20	Lv New Rockford Ar	1218	6.30	3.20	11.10
8.50	8.25	Ar Williston (Central Time) Lv	1218	5.20	2.10	11.10
8.10	7.35	Lv Williston (Mountain " ") Lv	1062	d 2.35	11.10	11.10
11.10	c10.10	Lv Glasgow Ar	909	11.45	8.05	8.05
2.55	12.50	Lv Havre Ar	1029	11.45	8.05	8.05
Streamlined Empire Builder						
8.40	2.35	Ar Great Falls Lv	903	5.00	5.00	5.00
4.50	e3.12	Lv Shelby Ar	804	9.57	6.10	6.10
5.28	7.80	Lv Cut Bank Ar	780	g9.20	5.45	5.45
7.34	7.33	Lv Glacier Park Ar	733	4.37	4.37	4.37
8.16	6.76	Lv Belton Ar	676	2.50	2.50	2.50
8.42	6.61	Lv Columbia Falls Ar	661	2.25	2.25	2.25
The Western Star						
8.40	a5.10	Lv Kalispell Ar	676	a 6.50	a 3.10	3.10
9.10	6.35	Lv Whitefish Ar	653	6.00	2.00	2.00
11.39	8.50	Lv Libby Ar	537	3.36	11.15	11.15
12.01	9.15	Ar Troy (Mountain Time) Lv	519	3.10	10.50	10.50
11.05	8.15	Lv Troy (Pacific Time) Ar	519	2.10	9.45	9.45
11.53	8.15	Lv Bonner's Ferry Ar	488	1.00	8.56	8.56
12.35	8.15	Lv Sandpoint Ar	454	1.00	8.20	8.20
2.15	11.15	Ar Spokane (GN Station) Lv	379	11.10	6.40	6.40
Spokane, Portland and Seattle Railway						
No. 3	No. 1			No. 2	No. 4	
9.30	11.40	Lv Spokane (GN Station) Ar	379	9.50	5.40	5.40
12.45	2.45	Lv Pasco Lv	231	7.10	2.30	2.30
2.51	4.40	Ar Wishram Lv	106	5.00	11.53	11.53
4.50	6.30	Ar Vancouver Lv	10	3.22	10.04	10.04
5.30	7.00	Ar Portland (Un Station) Lv	0	3.00	9.45	9.45

THE WESTERN STAR (Lightweight Streamlined Equipment)

CHICAGO - PORTLAND NO EXTRA FARE

CB&Q, 47-48, GN 27-28, SP&S 3-4

ALL CLASSES OF TICKETS HONORED

Standard Sleeping Cars offering modern Pullman accommodations between Chicago, St. Paul and Spokane, one car containing 16 Duplex Roomettes, and 4 Bedrooms. Double Bedrooms are connecting and may be sold ensuite.

Streamlined Day-Nite Coaches between Chicago and Spokane. Deluxe coaches between Spokane and Portland.

Diner between St. Paul and Spokane.

c — No. 31 stops at Glasgow to discharge revenue passengers from Minot and East and to receive revenue passengers for Spokane and West where No. 1 is scheduled to stop. d — No. 32 stops at Glasgow to discharge revenue passengers from Spokane and West and to receive revenue passengers for Minot and East where No. 2 is scheduled to stop. e — No. 31 stops at Cut Bank to discharge revenue passengers from Williston and East and to receive revenue passengers for scheduled stops Spokane and West. g — No. 32 stops at Cut Bank to discharge revenue passengers from Spokane and West and to receive revenue passengers for scheduled stops Williston and East. ④ Bus service, rail tickets honored. ⑤ Via train 3 from Havre. ⑥ Via train 4 to Havre.

STANDARD TIME

Light face figures denote A.M. time. Bold face figures denote P.M. time. Ar. Arrive Lv. Leave. f Stop on Signal.



SPOKANE, PORTLAND AND SEATTLE RAILWAY SYSTEM

S. P. & S. RY.— OREGON TRUNK RY.— OREGON ELECTRIC RY.— (Subsidiaries of Northern Pacific and Great Northern Railways)

PORTLAND — WISHRAM — PASCO — SPOKANE TRAINS

Westbound, Read Down				Eastbound, Read Up				SPECIAL STOPS	
SP&S No. 3 Daily	NP 1 SP&S 3 Daily	NP No. 25 SP&S No. 1 Daily	SP&S No. 1 Daily	Elev.	Spokane, Portland and Seattle Railway	Miles from Portland	SP&S No. 2 Daily	SP&S4 NP 2 Daily	SP&S No. 4 Daily
9.30			11.40	1871	Lv. Spokane ☆☆☆ (business capital of...)	379.5	9.50		5.40
	8.21	11.30		1920	Lv. Great No. Station Inland Empire) Ar	377.5	11.29	8.01	
	NP Ry			2292	North Pacific Station... Ar	360.7		NP Ry	
	No. 1			2215	South Cheney } Vast plateaus of...	349.5		No. 2	
	Spokane			2090	Amber } Eastern Wash.	343.3		Pasco to	
	to Pasco			1947	Rodna... } Grain district)	334.7		Spokane	
	Pro-	Vista-Dome	Stream-	1826	Lamont (West edge great Palouse)	329.4	Stream-	Vista-	
	visional	North	lined	1706	Rockwell... } Grain district)	323.8	lined	North	
	Stops at	Coast	Empire	1468	Macall... } Grain district)	311.1	Empire	Coast	
	Cheney	Limited	Builder	1246	Hooper... } Grain district)	299.5	Builder	Limited	
	Sprague	Via		1067	Washutucna... } Grain district)	290.9		NP Ry	
	Ritzville	NP Ry		964	Sperry... } Spectacular Devil's...	285.3		to Spokane	
	Lind	to Pasco		888	Kahlotus... } Spectacular Devil's...	277.8		Spokane	
	Connell			719	Farrington... } Canyon	268.6			
				496	Snake River... } Snake River Canyon...	256.3			
				466	Redd... } Snake River Canyon...	250.5			
				454	Levey... } Ice Harbor Dam	244.8			
12.20	11.26	2.15	2.30	358	Ar. PASCO... } ☆☆☆ Lv	231.3	7.10	8.49	5.00
				358	Lv. PASCO... } Ar	231.3	7.00	7.00	1.55
	12.45	2.45	2.45	352	Kennewick (Columbia River...)	228.5		1.55	1.55
				352	Finley... } Crossing	223.9			
				352	Yellepit (Named after Indian Chief	215.8			
				351	Berrian met by Lewis & Clark, 1805-6)	203.3			
				349	No. McNary (McNary Dam)	195.2			
				323	Plymouth (Opp. Old Oregon Trail)...	192.0			
				266	Paterson... } Whitcomb	179.8			
				259	of the... } Alderdale	170.4			
				241	Co-... } McCredie	162.2			
				242	lumbia... } Roosevelt	157.6			
				230	River... } Sundale	146.7			
				216	Goodnoe... } Cliffs (Mt. Hood, 11,225 ft. visible)	140.8			
				203	Cliffs (Mt. Hood, 11,225 ft. visible)	130.8			
				179	Maryhill... } WISHRAM (Mt. Hood visible) Lv	119.7			
				175	Ar. WISHRAM... } Lv	114.3			
2.51	2.51	4.40	4.40	166	Lv. WISHRAM... } Ar	106.1	5.00	5.00	11.53
				166	Along... } WISHRAM... } Ar	106.1	4.58	4.58	11.46
				161	the... } Northdalles (The Dalles Dam)	103.2			11.46
				123	North... } LYLE (Memaloose is Indian burying)	93.3			
	b3.22	b3.22		101	Bank... } Bingen-White Salmon (Mt. Hood)	85.3		gm11.26	gm11.26
	bm3.31	bm3.31	5.16	101	of Co-... } Underwood (Apple country)	75.9	4.29	4.29	gm11.17
				101	lumbia... } Cooks (Mitchell Point to south)	72.5			
				101	River... } Stevensen (Cascades of Columbia)	70.9			
				09	over... } North Bonneville (Bonneville Dam)	65.8			
				09	the... } Skamania (Beacon Rock, alt. 840 ft.)	54.3	4.08	4.08	g10.56
				74	His... } Prindle (Columbia River)	49.3			g10.56
				51	toric... } Mt. Pleasant (Mt. Hood, 11,225 ft.)	42.1			
				51	Lewis... } Washougal (Large woolen mills)	37.8			
				48	and... } Camas (Lge paper & pulp mills)	32.0			
				48	Clark... } Fisher	28.0			
	4.25	4.25	6.12	48	Trail... } VANCOUVER (founded 1825) Lv	23.8	3.38	3.38	m10.26
				48	of 1805-6... } VANCOUVER... } Ar	19.8			m10.26
				46	Ar. VANCOUVER... } East St. Johns (5 snow mts.)	10.0	3.22	3.22	10.10
				46	Lv. VANCOUVER... } Union Station	10.0	3.19	3.19	10.04
				46	East St. Johns (5 snow mts.)	7.0			10.04
				56	Ar. PORTLAND (City of Roses) ☆☆☆ Lv	0.0	3.00	3.00	9.45
				32	Ar. PORTLAND (City of Roses) ☆☆☆ Lv	0.0			9.45

FOR THROUGH SERVICE AND CONSIST OF ALL TRAINS, SEE PRECEDING PAGES 2 and 3

A TRANS-CONTINENTAL SYSTEM OF RAILWAYS THROUGH AMERICA'S WONDERLAND

Traversing the northern states between the Pacific Northwest and Chicago presents a veritable wonderland offering passengers a splendid variety of ever-changing scenery.

Over these lines, between Portland and Chicago, are operated four of America's famous trains, the Streamlined Empire Builder and the Streamlined Western Star, via S.P. & S. Spokane, G.N. St. Paul, C.B. & Q. Chicago, and

the Streamlined Vista Dome North Coast Limited and the Streamlined Mainstreeter via S. P. & S. Pasco, N. P. St. Paul and C.B. & Q. Chicago where connections are made to all points east and south.

These trains provide passengers with every feature of modern railway travel for their comfort, and pleasure.

STANDARD TIME

Light face figures denote A.M. time.

Bold face figures denote P.M. time.

Ar. Arrive Lv. Leave. f Stop on Signal.



SPOKANE, PORTLAND AND SEATTLE RAILWAY SYSTEM

S. P. & S. RY.— OREGON TRUNK RY.— OREGON ELECTRIC RY.— (Subsidiaries of Northern Pacific and Great Northern Railways)

PORTLAND - REDMOND - BEND TRAINS

Read Down			Read Up		
Elev.	No. 105 Sat. Only	No. 103 Daily Ex. Sat. & Sun.	Oregon Trunk Ry. (Mixed Trains)	Miles from P't'd	No. 102 Daily Ex. Sun.
3618	7.00	11.00	Lv Bend... Ar	257.6	7.00
3572	f 7.11	f 11.15	Lv Deschutes... Ar	250.3	f 6.35
2983	f 7.30	11.40	Lv Redmond... Ar	240.7	6.15
2918	f 7.35	f 11.46	Lv Prineville Jct... Ar	238.4	f 5.50
2863	f 7.40	f 11.52	Lv Terrebonne... Ar	235.6	f 5.45
2850	f 7.52	f 12.09	Lv Opal City... Ar	227.7	f 5.31
2624	f 8.02	f 12.25	Lv Culver... Ar	221.1	f 5.18
2517	8.12	12.35	Lv Metolius... Ar	216.3	5.10
2458	8.25	12.55	Lv Madras... Ar	211.1	5.00
2169	f 8.35	f 1.10	Lv Paxton... Ar	205.9	f 4.39
1787	8.51	1.26	Lv Gateway... Ar	200.1	4.23
1254	f 9.13	f 1.48	Lv South Junction... Ar	191.9	f 4.01
1203	f 9.24	f 1.59	Lv Kaskela... Ar	186.2	f 3.45
1074	f 9.43	f 2.18	Lv Dixon... Ar	177.2	f 3.26
1012	f 9.50	2.25	Lv Dent... Ar	173.6	3.19
960	f 9.57	2.32	Lv Dana... Ar	169.9	f 3.11
852	10.20	3.01	Lv Maupin... Ar	160.7	2.53
783	f 10.35	f 3.16	Lv Sherar... Ar	153.4	f 2.39
606	f 10.51	f 3.32	Lv Oakbrook... Ar	145.8	f 2.23
510	f 11.10	f 3.51	Lv Sinamox... Ar	136.5	f 2.04
508	f 11.18	f 3.59	Lv Dike... Ar	132.5	f 1.55
354	f 11.35	f 4.16	Lv Lockit... Ar	124.4	f 1.38
286	f 12.01	f 4.41	Lv Moody... Ar	112.0	f 1.13
166	12.15	5.00	Ar Wishram... Lv	106.1	1.00

EQUIPMENT BETWEEN WISHRAM and BEND
No Leg Rest — Non Air Conditioned

RAIL TRAVEL CREDIT CARD PLAN

permits purchase of Rail and Pullman tickets from any S. P. & S. Railway Co. agent on Credit by securing a Credit Card from the Rail Travel Credit Agency, Room 436, Union Station, Chicago, Ill.

FREE BAGGAGE CART SERVICE

is available at stations in the following cities: Spokane, Pasco, Wash.; Portland, Ore. Please use them to your convenience, leaving them at train side or at the street curb.

YOUR ROOM'S READY

... when you wire ahead!



Western Union Hotel Reservation Service is the fast, convenient, inexpensive way to make and confirm the accommodations you want... where you want them. WESTERN UNION

STANDARD TIME

Light face figures denote A.M. time.

Bold face figures denote P.M. time.

Ar. Arrive Lv. Leave. f Stop on Signal. t Telegraph Office.

SAVE MONEY ON HALF-FARE FAMILY TRAVEL PLAN!

Take Advantage of Our Family Fares

ONE-WAY TRAVEL — Head of family pays regular one-way fare, first class or coach, other parent and children, 12 through 21, each pay half fare. Children 5 through 11, pay one-quarter fare. Children under five are carried free.

ROUND-TRIP TRAVEL — Head of family pays regular round trip fare, first class or coach, other parent and children, 12 through 21, each pay one-way fare for the round trip. Children, 5 through 11, pay half of the one-way fare for round trip. Children under five are carried free.

For details consult any Spokane, Portland and Seattle Railway travel representative.

PACIFIC TRAILWAYS

PORTLAND - BEND

Bus	Bus	Bus	Bus
		PORTLAND... Ore	
		Madras... Ore	
		Redmond... Ore	
		BEND... Ore	

Rail tickets routed via OT — S. P. & S. Railways from or to Central Oregon points will be honored to or from Portland, Oregon by the Mt. Hood Stages (Pacific Trailways). Ask agent for details.

FREIGHT SERVICE

Route your freight shipments via the Spokane, Portland and Seattle Railway for fast and dependable service — between Portland, Astoria, Pasco, Spokane, Yakima, Walla Walla, Lewiston, Eugene, Bend and all points east and south.

Let Us Handle Your Transportation Problems

FREIGHT SERVICE ONLY

Portland — St. Helens — Astoria

0	Portland	71.2	Westport
7.3	Linnton	73.5	Wauna
19.9	Scappoose	76.8	Bradwood
27.6	St. Helens	86.5	Knaappa
41.9	Prescott	99.7	Astoria
45.8	Rainier	105.6	Warrenton
58.0	Locoda	118.0	Seaside
62.2	Clatskanie		

HAMMOND BRANCH

Miles	STATIONS
0	Warrenton
1.8	Flavel
2.7	Hammond

FREIGHT SERVICE ONLY

is operated on the following Branches

S. P. & S. Railway

GOLDENDALE BRANCH

Miles	STATIONS
0	Lyle
10.3	Pitt
13.4	Klickitat
16.9	Wahkiakus
30.2	Warwick
35.3	Centerville
41.6	Goldendale

VERNONIA BRANCH

Miles	STATIONS
0	Portland
7.3	Linnton
11.7	Burlington
17.1	Bowers Junction
21.9	North Plains
27.5	Banks
31.7	Manning
43.1	Braun
48.5	Vernonia

Oregon Electric Railway

PORTLAND - SALEM - ALBANY - EUGENE LINE

Miles	STATIONS
0	Portland
21.5	Forest Grove Jct.
27.6	Beaverton
32.1	Tigard
36.1	Tualatin
39.0	Tonquin
43.0	Wilsonville
49.1	Donald
57.4	St. Louis
63.1	Hopmer
64.1	Quincy
71.2	Salem
79.9	Orville
96.5	Albany Yard
97.8	Albany
124.2	Harrisburg
128.7	Junction City
142.8	Eugene

FOREST GROVE BRANCH

Miles	STATIONS
0	Forest Grove Jct.
0.8	Oreco
4.5	Hillsboro
7.9	Cornelius
10.6	Forest Grove

SANTIAM BRANCH

Miles	STATIONS
0	Albany Yard
4.5	Froman
6.7	Fry
8.4	Goltra
10.3	Tallman
14.1	Lebanon
15.9	Weldwood
20.2	Waterloo
22.1	Nye
28.8	Sweet Home
31.9	Foster



SPOKANE, PORTLAND AND SEATTLE RAILWAY SYSTEM

CONNECTIONS AT PORTLAND

S. P. & S. RY. — OREGON TRUNK RY. — OREGON ELECTRIC RY. — (Subsidiaries of Northern Pacific and Great Northern Railways)

PORTLAND - PUGET SOUND

Northern Pacific Ry. - Great Northern Ry. - Union Pacific R.R.

Northbound — Read Down Southbound — Read Up

G.N. 459 Daily	N.P. 407 Daily	U.P. 457 Daily		G.N. 460 Daily	N.P. 408 Daily	U.P. 458 Daily
1.30	5.00	9.45	Lv. Portland, Un. Sta. Ar	12.05	4.00	9.30
1.49	5.18	10.03	Lv. Vancouver, Wn. Ar	11.43	3.38	9.08
			Ar. Kalama. Lv	f11.11		
2.29	5.55	10.40	Ar. Kelso-Longview. Lv	10.59	2.58	8.25
f 2.39			Ar. Castle Rock. Lv	f10.47		
3.11	6.39	11.24	Ar. Chehalis. Lv	10.14	2.17	7.44
3.21	6.47	11.32	Ar. Centralia. Lv	10.07	2.10	7.37
f 3.44	b 7.08	11.53	Ar. East Olympia. Lv	b 9.43	b 1.47	v 7.14
4.25	7.49	12.34	Ar. Tacoma. Lv	9.01	1.05	6.32
k 5.30	k 8.45	u 1.30	Ar. Seattle. Lv	k 8.05	k 12.15	u 5.30

b — To and from Olympia by bus. k — King Street Station.
 u — Union Station.
 v — No connecting bus service between East Olympia and Olympia.

EQUIPMENT OF TRAINS

Train 11-12, Cascade — (Streamlined, Air Conditioned). Between Portland and San Francisco. Standard sleeping cars with bedrooms, roomettes, lounge and dining car. Non reserved seat chair car.

Great Northern Ry. Bend, Klamath Falls Bieber	SP&S		Northern Pacific Walla Walla	SP&S	
	4	2		3	1
(Freight Service Only)	9.45	3.00	Lv. Portland. Ar	5.30	7.00
	1.55	7.00	Ar. Pasco. Lv	12.45	2.45
Miles	Bus		Bus		
	11.24	2.00	Lv. Pasco. Ar	10.10	4.15
0 Bend		2.20	Lv. Wallula. Ar	9.50	3.55
13 Lava		3.00	Ar. Walla Walla. Lv	8.15	3.15
32 La Pine	2-25	1	Northern Pacific West of Pasco	2	26-3
52 Crescent	Daily	Daily		Daily	Daily
68 Chemult			Lv. Portland. Ar	5.30	
115 Chiloquin		3.00	Ar. Pasco. Lv	12.45	
133 Algoma		7.00	Lv. Pasco. Ar	4.31	8.24
145 Klamath Falls			Ar. Kennewick. Lv	4.16	
162 Merrill	2.40	11.55	Ar. Prosser. Lv	3.27	
213 Scarface		12.05	Ar. Toppensish. Lv	f 2.53	
225 Lookout		1.26	Ar. Yakima. Lv	2.35	6.49
236 Bieber		4.35	Ar. Ellensburg. Lv	1.06	5.40
		5.34			

MARK YOUR BAGGAGE

All baggage, whether checked or carried with you, should be plainly marked with your name and permanent address. This will insure prompt recovery should it become lost or go astray. Remove all obsolete labels and addresses.

JEWELRY, CURRENCY, VALUABLE PAPERS and LIQUIDS should not be placed in baggage intended for checking. The railway will not assume responsibility for loss of, or damage to such articles.

BUS	GREYHOUND LINES	BUS
Frequent Service	Spokane	Frequent Service
	Spangle	
	Rosalia	
	Oakesdale	
	Garfield	
	Palouse	
	Pullman	
Moscow		
	Lewiston	

SOUTHERN PACIFIC COMPANY

Southbound — Read Down Northbound — Read Up

11		12
4.15	Lv. Portland. Ar	8.50
5.25	Ar. Salem. Lv	7.18
5.58	Ar. Albany. Lv	6.48
6.53	Lv. Eugene. Lv	6.05
11.23	Lv. Klamath Falls. Lv	1.25
3.59	Ar. Redding. Lv	8.35
7.35	Ar. (a) Sacramento (a). Lv	5.10
8.07	Ar. Martinez. Lv	4.50
9.20	Ar. Oakland, 16th St. Lv	3.50
9.55	Ar. San Francisco. Lv	3.10
7.20	Ar. Los Angeles. Lv	6.00

(a) — Via P.G. Lines Bus. From Davis.

SAN FRANCISCO — LOS ANGELES — COAST LINE

76	98	M	75	99
9.00	8.25	0	Lv. San Francisco. Ar	8.30
10.15	9.19	47	Ar. San Jose. Lv	7.13
3.08	1.30	248	Ar. San Luis Obispo. Lv	2.25
5.36	3.46	367	Ar. Santa Barbara. Lv	1.44
8.30	6.15	470	Ar. Los Angeles. Lv	9.00

SAN FRANCISCO — LOS ANGELES — VALLEY LINE

52	M	51
7.35	0	Lv. San Francisco. Ar
8.05	4	Lv. Oakland 16th St. Ar
8.25		Lv. Sacramento. Ar
12.08	205	Lv. Fresno. Lv
2.20	313	Lv. Bakersfield. Lv
7.20	482	Ar. Los Angeles. Lv

UNION PACIFIC RAILROAD

Read Down		Read Up	
18 Daily	106 Daily	17 Daily	105 Daily
10.00	1.00	Lv. Portland. Ar	5.00
11.24	2.14	Lv. Hood River. Lv	3.17
12.03	2.45	Lv. The Dalles. Lv	2.40
3.20	5.01	Lv. Pendleton. Lv	11.00
7.25	8.15	Lv. Baker. Lv	6.57
10.43		Lv. Payette. Lv	5.23
10.55		Lv. Ontario. Lv	5.13
11.55	11.55	Lv. Nampa. Lv	4.10
12.35	12.20	Lv. Boise. Lv	3.35
5.35	4.30	Ar. Pocatello. Lv	10.30
6.00	3.00	Ar. Cheyenne. Lv	9.20
9.30	9.15	Ar. Denver. Lv	6.45

SPOKANE, PORTLAND AND SEATTLE RAILWAY SYSTEM

S. P. & S. RY. — OREGON TRUNK RY. — OREGON ELECTRIC RY. — (Subsidiaries of Northern Pacific and Great Northern Railways)



Sleeping, Parlor Car and Reserved Seat Fares

For information only. Subject to change without notice.

BETWEEN	PORTLAND		SPOKANE		BETWEEN	PORTLAND		SPOKANE	
	Parlor Car Seat	Lower Berth Standard	Parlor Car Seat	Lower Berth Standard		Parlor Car Seat	Lower Berth Standard	Parlor Car Seat	Lower Berth Standard
AND					AND				
Billings. Mont.		\$12.25	\$ 7.90		Minneapolis. Minn.	\$20.80	\$17.70		
Bingen-Wm. Salmon, Wn.			5.80		Missoula. Mont.	8.70	5.80		
Bozeman. Mont.		11.00	6.70		Oakland. Calif.	11.00	14.05		
Butte. Mont.		9.95	5.80		Omaha. Neb.	20.80	17.70		
Camas. Wn.		24.20	20.80		Pasco. Wn.	2.35	5.80		
Chicago. Ill.					Portland. Ore.		5.80		
Denver. Colo.		17.00	15.90		St. Paul. Minn.	20.80	17.70		
Duluth. Minn.		20.80	17.70		San Francisco. Calif.	11.00	14.05		
Eugene. Ore.	1.50	6.70	7.05		Seattle. Wn.	1.60	5.80		
Fargo. N.D.		18.85	14.70		Spokane. Wn.	2.95	5.80		
Gardiner. Mont.		11.75	7.55		Stevenson. Wn.		5.80		
Glacier Park. Mont.		9.50	5.80		Tacoma. Wn.	1.20	5.80		
Great Falls. Mont.		11.75	7.05		Vancouver. Wn.		5.80		
Havre. Mont.		11.75	7.55		Wishram. Wn.	1.20	5.80		
Helena. Mont.		9.95	5.80						
Kansas City. Mo. (Via St. Paul, Minn.)		22.20	19.10						
Klamath Falls. Ore.	3.40	6.70	9.50						
Livingston. Mont.		11.45	7.05						
Los Angeles. Calif.		15.80	18.10						
Lyle. Wn.			5.80						

Ⓛ Railroad Owned Cars.

Rates For Sleeping Car Accommodations

Where Standard Lower Berth Is	Upper Berth Is	Duplex Roomette Is	ROOM-ETTE For One Person	Duplex Single Room For One Person	BED-ROOM For One or More Persons	Bedroom Suite For Two or More Persons	Compartment For One or More Persons	Drawing Room For One or More Persons
\$ 5.80	\$ 4.40	\$ 6.35	\$ 8.10	\$10.20	\$14.75	\$26.65	\$15.85	\$21.35
6.10	4.60	6.65	8.50	10.65	15.40	27.85	16.55	22.30
6.70	5.15	7.40	9.40	11.65	16.65	30.40	18.05	24.40
7.05	5.40	7.85	9.95	12.20	17.50	31.80	18.95	25.65
7.55	5.65	8.30	10.55	13.05	18.65	34.05	20.10	27.25
7.90	6.10	8.75	11.05	13.75	19.50	35.60	21.00	28.55
8.70	6.65	9.65	12.20	14.90	21.20	39.15	22.90	31.20
9.50	7.15	10.55	13.25	16.25	22.95	42.10	24.85	33.90
9.95	7.55	10.95	13.80	16.90	23.90	43.80	25.85	35.35
10.00	7.50	11.10	13.90	17.00	24.00	44.05	26.00	35.50
11.00	8.40	12.25	15.50	18.65	26.30	48.25	28.45	38.90
11.45	8.65	12.70	16.00	19.25	27.20	49.90	29.50	40.35
11.75	9.00	13.05	16.60	19.95	27.95	51.30	30.25	41.45
12.25	9.25	13.55	17.10	20.45	28.90	53.15	31.45	43.05
14.05	10.70	15.45	19.70	23.45	33.00	60.80	35.75	49.15
14.45	11.05	16.00	20.15	24.10	33.85	62.25	36.65	50.35
14.70	11.35	16.25	20.70	24.70	34.45	63.55	37.30	51.25
15.90	12.10	17.55	22.20	26.40	36.95	68.05	40.15	55.25
17.00	12.90	18.85	23.75	28.10	39.40	72.65	42.80	59.00
17.70	13.55	19.45	24.75	29.25	41.05	75.70	44.50	61.35
18.10	13.70	19.95	25.25	29.85	41.75	77.10	45.40	62.55
18.45	14.00	20.30	25.85	30.45	42.60	78.70	46.30	63.85
18.85	14.30	20.70	26.25	30.95	43.35	80.10	47.20	65.10
19.10	14.55	21.05	26.80	31.60	44.05	81.30	47.85	66.00
20.15	15.35	22.20	28.20	33.20	46.40	85.75	50.40	69.55
20.80	15.90	22.95	29.15	34.45	47.85	88.50	51.95	71.70
22.20	16.85	24.40	31.00	36.40	50.90	94.10	55.30	76.35
23.15	17.65	25.50	32.45	38.10	52.95	97.95	57.60	79.65
24.20	18.40	26.60	33.80	39.50	55.05	101.95	60.05	83.00

Travel Bargain
For Young People!

YOUTH FARE . . .

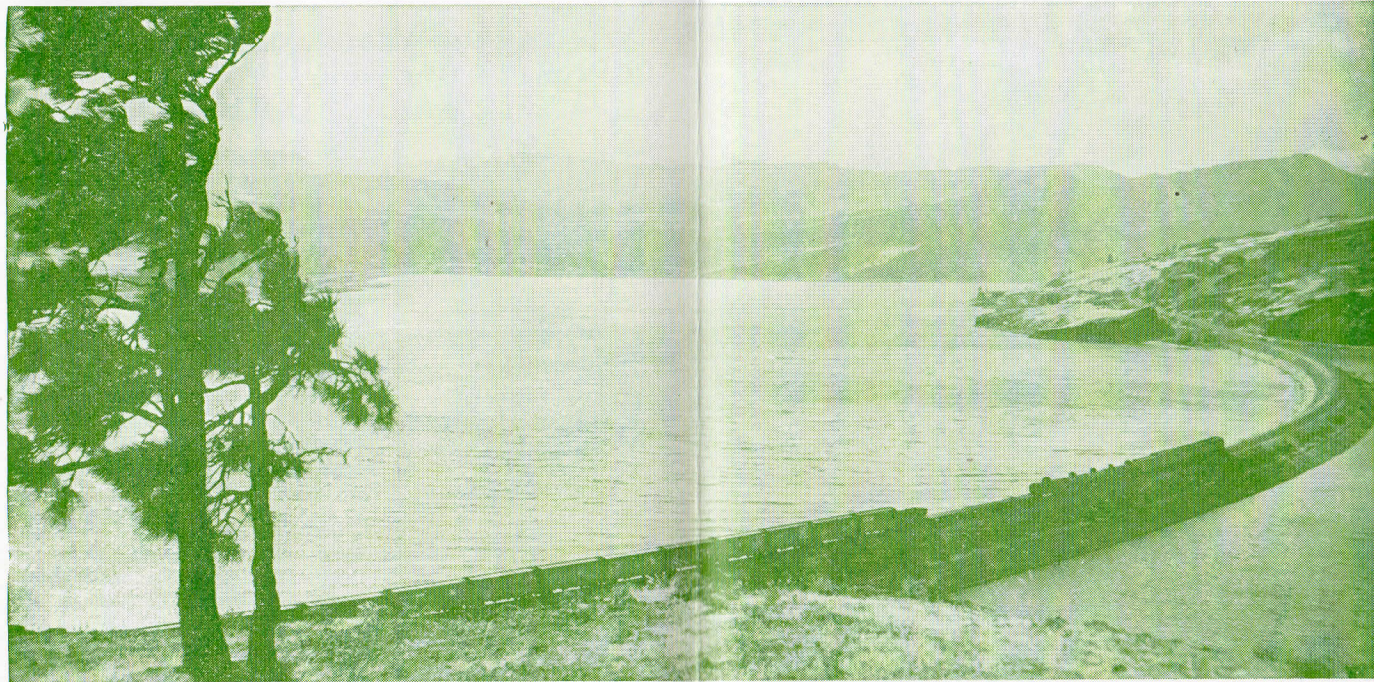
ONE-WAY TRAVEL FOR HALF FARE
 ROUND-TRIP TRAVEL FOR ONE-WAY FARE
 VALID ON TRAINS 3 AND 4 IN COACH SERVICE

FOR INFORMATION CONSULT ANY
 SPOKANE, PORTLAND AND SEATTLE RAILWAY TRAVEL REPRESENTATIVE



SPOKANE, PORTLAND AND SEATTLE RAILWAY SYSTEM

S. P. & S. RY. — OREGON TRUNK RY. — OREGON ELECTRIC RY. — (Subsidiaries of Northern Pacific and Great Northern Railways)



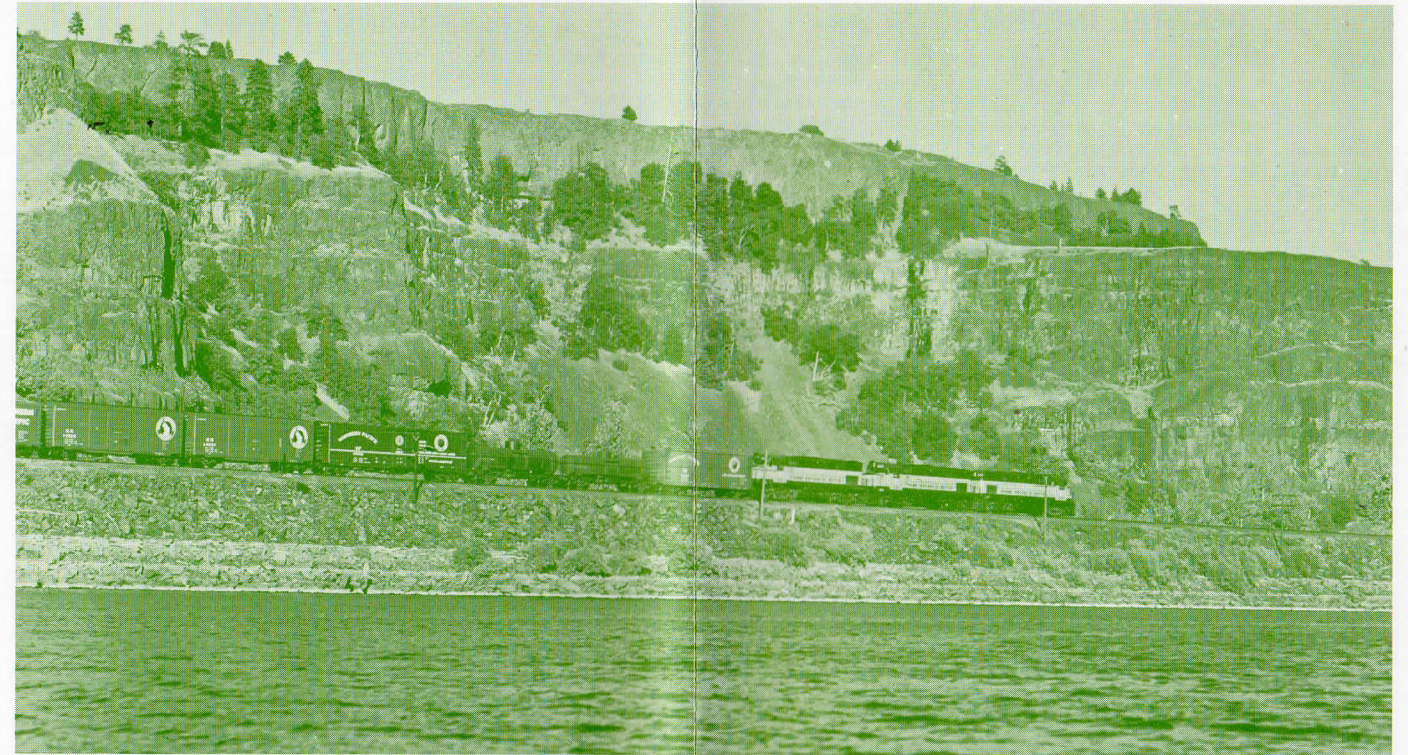
S. P. & S. Ry. Near Bingen-White Salmon, Washington



S. P. & S. Ry. Along The Columbia River Near Lyle, Washington

SPOKANE, PORTLAND AND SEATTLE RAILWAY SYSTEM

S. P. & S. RY. — OREGON TRUNK RY. — OREGON ELECTRIC RY. — (Subsidiaries of Northern Pacific and Great Northern Railways)



Spokane, Portland and Seattle Railway near Lyle, Washington



Spokane, Portland and Seattle Railway with Spokane, Washington in the background

Your Choice of ... Two Daily Trains

Between PORTLAND and SPOKANE

See Page 4 For Detailed Schedules

EASY way
to ship anything

Just phone Railway Express.
Prompt pick-up and fast
delivery within established
vehicle limits.



... safe, swift, sure



SPOKANE, PORTLAND AND SEATTLE RAILWAY SYSTEM

S. P. & S. RY. — OREGON TRUNK RY. — OREGON ELECTRIC RY. — (Subsidiaries of Northern Pacific and Great Northern Railways)

GENERAL INFORMATION

NOTE — This folder has been compiled with care, but may contain errors. Furthermore, it is sometimes necessary to change schedules without notice, trains shown are sometimes unavoidably delayed and connections missed. **We hope none of our patrons will be inconvenienced by any of these causes, but the Railway Company will not be liable therefor.**

ADJUSTMENT OF FARES. In cases of dispute with conductors or agents, passengers should pay fare required, take receipt and communicate with Manager Revenue Accounting, S. P. & S. Ry., Box 571, Portland, Ore. 97207.

REDEMPTION OF TICKETS. Wholly unused tickets will be redeemed by selling agent. Partly used tickets will be redeemed under tariff regulations on application to Manager Revenue Accounting.

STOPOVERS will be allowed at all regular scheduled stops within limits, on application to Conductor.

CHILDREN'S FARES. Children under five years of age, when accompanied by parent or guardian, will be carried free of charge. Children five years of age and under twelve years of age will be charged one-half of the adult fares, **if not mature enough to take care of themselves when traveling alone must not be ticketed unless accompanied by parent or guardian.** Children twelve years of age and over will be charged the adult fare.

MARK YOUR BAGGAGE. All baggage should show name and permanent address of owner. Appropriate gummed labels may be secured from Ticket or Baggage Agent.

HAND BAGGAGE in Pullmans is restricted to what can be conveniently placed in berth or at seat occupied by passenger.

CHECKING CHARGE. 35c per suitcase, trunk or similar size carton.

CHECKED BAGGAGE. Baggage should be checked at least 30 minutes before departure of the train on which it is desired that it move. Every effort is made for prompt handling of baggage, but cannot guarantee forwarding on same train as passenger, nor can time of arrival be guaranteed.

BAGGAGE MAXIMUMS. Ordinarily 150 lbs. is free allowance for each adult ticket. No single piece of baggage exceeding 300 pounds in weight, or exceeding \$2500.00 in value will be checked. Free allowances are subject to tariff stipulation as to contents, weight, value and size.

BAGGAGE INSURANCE. A charge of only thirty cents is made for each hundred dollars value declared above \$100 for baggage checked for each adult passenger and above \$50 for each half-fare ticket. The maximum baggage valuation which may be insured on a single ticket is \$2500.

LIMITED LIABILITY. Excess value of baggage must be declared and paid for at time of checking.

BICYCLES (not motorcycles), baby carriages, dogs and guns are carried in baggage cars subject to tariff regulations.

LOST ARTICLES should be inquired for at the Baggage Office, Union Station, Portland, Oregon, or S. P. & S. Station, Spokane, Washington.

RESPONSIBILITY. No responsibility is assumed for unchecked articles left in stations or cars.

GENERAL OFFICES

Amer. Bank Bldg., 621 S.W. Morrison St., Box 571, Portland, Oregon 97207
Telephone 228-9111 (Area Code 503)

- LOUIS W. MENK..... President..... St. Paul, Minn. 55101
- JOHN M. BUDD..... Vice-President..... St. Paul, Minn. 55101
- N. S. WESTERGARD..... Vice-President and General Manager..... Portland, Oregon
- J. G. MELONAS..... Asst. to General Manager..... Portland, Oregon
- R. A. LAWRENCE..... Traffic Manager..... Portland, Oregon
- F. J. HARRIS..... Asst. Traffic Manager..... Portland, Oregon
- W. J. CROSBIE..... General Passenger Agent..... Portland, Oregon
- H. F. ERZ..... General Freight Agent..... Portland, Oregon
- C. W. MILLER..... Gen. Industrial Agent..... Portland, Oregon
- H. S. JOHNSON..... Asst. General Industrial Agent..... Portland, Oregon
- F. S. BARLOW..... Superintendent..... Portland, Oregon
- L. Z. DANIELS..... General Mechanical Supt..... Vancouver, Wash.
- H. F. MOY..... Secretary and Chief Engineer..... Portland, Oregon
- J. H. EARLENBAUGH..... Treasurer..... Portland, Oregon
- W. T. COWAN..... Purchasing Agent..... Portland, Oregon
- L. F. LAWSON..... Comptroller..... Portland, Oregon
- W. T. WAHLGREN..... Manager Disbursement Accounting..... Portland, Oregon
- B. CALKINS..... Manager Revenue Accounting..... Portland, Oregon
- S. W. GRAY..... Manager Misc. Accounting..... Portland, Oregon
- T. A. BURKE..... Manager Data Processing..... Portland, Oregon
- W. J. SHEEHAN..... General Claim Agent..... Portland, Oregon
- H. E. HUDSON..... Right of Way and Tax Agent..... Portland, Oregon
- H. WENTZIEN..... Superintendent Dining Cars..... Portland, Oregon

Representatives

- ALBANY, ORE..... D. A. DARGIS (Phone 926-1546 or 926-1547)..... Agt. O. E., Ry. Sta.
- BEND, ORE..... E. A. KOSKELA (382-3911)..... Agt. Passenger Sta.
G. E. SKINNER (382-2901)..... General Agent
- EUGENE, ORE..... C. L. JOHNSON (345-8757)..... Agt., O. E. Ry. Sta.
W. Z. MYERS (345-8759)..... General Agent
G. W. WRIGHT..... Traveling Frt. & Pass. Agent
- LOS ANGELES, CALIF. 90014
Great Northern Railway, Room 517, 510 W. 6th St. Bldg., Ph. MA 9-1473
T. L. MAY..... Sales Manager
Northern Pacific Railway, 610 South Main St., Ph. 627-2321
S. A. JEWELL..... General Agent
- OAKLAND, CALIF. 94612
Great Northern Railway, 215 Financial Center, Ph. 832-7672
OWEN FREEMAN..... Sales Manager
Northern Pacific Railway, 611 Central Building, Ph. 451-8717
J. V. KRISMAN..... General Agent
- PORTLAND, ORE..... A. T. MERCER..... GAPD (SP&S-NP Rys.)
439 S. W. 6th Ave., Telephone 227-0415
K. C. CLAUSON..... GAPD (SP&S-GN Rys.)
607 S.W. Washington St., Telephone 223-7273
R. A. J. WESTLAKE, Mail, Baggage and Ticket
Agt., Union Station, Foot of N.W. 6th Ave.,
Telephone 227-3421
J. H. TAYLOR..... General Agent, Freight Dept.
T. J. MARTIN..... Trav. Frt. & Pass. Agent
F. J. KIRCHHOFF..... Trav. Frt. & Pass. Agent
R. G. BOGGESS..... City Freight Agent
D. H. CARLSON..... City Freight Agent
L. L. COX..... City Freight Agent
J. D. SURLLES, Local Freight Agent, N.W. 11th
and Hoyt, Phone 228-9111.
- SACRAMENTO, CALIF. 95814..... R. L. LAMB, Sales Mgr., G. N. Ry., 223 Forum Bldg.
- SALEM, OREGON..... P. J. MARTELL (363-3120) Agt., O. E. Ry. Fr. Dep.
- SAN FRANCISCO, CALIF. 94105
Northern Pacific Railway, 681 Market St., Phone 781-1078
DANIEL TINNEY..... General Agent
Great Northern Railway, 681 Market St., Ph. Sutter 1-6051; 1-6052
C. G. ALEXANDER..... Gen. Agent Passenger Dept.
- SPOKANE, WASH. 99204..... A. H. STUCKERT..... General Agent
D. W. MORRISON..... Trav. Frt. & Pass. Agent
410 Columbia Bldg., Ph. MADison 4-4238
C. M. KOENIGS..... Gen. Agent Passenger Dept.
G. N. Station, Phone MA 4-5141.
W. J. RIDDELL..... General Agent
W. 221 — First Avenue
L. M. CARROLL..... Ticket Agent, Gt. Nor. Ry. Sta.
- VANCOUVER, WASH..... K. M. ELLER, Agt. (Ph. 693-2561), SP&S R Sta.
C. M. WAGNER (Ph. 694-5151), Pass Sta.

Agents of the Great Northern and Northern Pacific Rys. throughout the United States are the direct representatives of the Spokane, Portland and Seattle Railway Co., Oregon Trunk Railway and Oregon Electric Railway Co.

