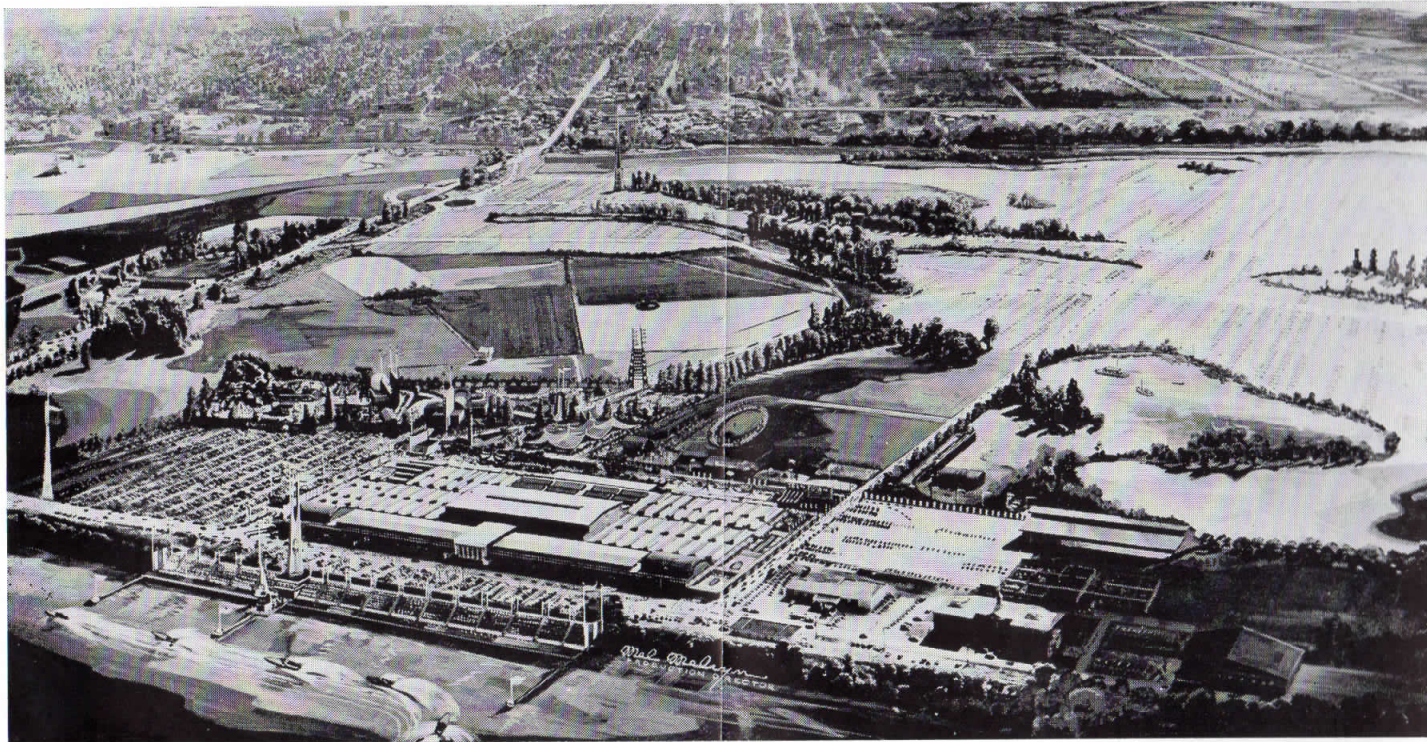


The SPOKANE, PORTLAND and SEATTLE Railway Invites You to the  
Oregon Centennial Exposition in 1959



Site of Oregon Centennial Exposition and International Trade Fair at Portland, June 10-September 17, 1959.

## OREGON CENTENNIAL

100-Day Exposition Expected to Draw 8 Million

The biggest celebration in the United States in 1959 will be held in Oregon in honor of the state's admission to the Union 100 years earlier.

The state-wide celebration began Feb. 14, the admission date, with cutting of the world's biggest birthday cake followed by historical pageants, a spring housecleaning for the whole state, pony express mail service and re-enactment of historical events.

The highlight of the celebration will be a mammoth exposition and international trade fair opening at Portland June 10 at the site shown above.

The international trade fair will close after two weeks, but exhibits from more than a score of countries are expected to remain until the end of the exposition, which will continue a symbolic 100 days until Sept. 17.

Research experts have forecast an attendance of 8 million for the exposition, which will cover 65 acres and use another 100 acres for parking.

Visitors will be able to set off chain reactions in two displays of atomic energy; ride on an elephant train; do business in a frontier town and view a restoration of the village in which Lewis and Clark wintered on the Oregon Coast.

The ideal home of 1969 will be on display, complete with gadgets seldom seen now but sure to be included in the new homes of the future. So will a forest industry pavilion embodying architectural concepts never before translated into reality—seven hyperbolic paraboloids, with a 24,000 square foot roof supported in only seven places, and there by 2x4's.

Ten acres have been set aside for the International Garden of Tomorrow, where newly-developed flowers will be displayed as a preview of the flower beds of the future, and native shrubs from all parts of the world will grow. Here will be an area of calm and quiet, providing a respite of quiet repose far from the demands of industry and business. In the garden will be the biggest floral clock in the world, 30 feet across, with hands and numbers made of living flowers. It will actually tell time, powered by electric clock works as big as a desk. Near the 1 o'clock mark will stand a candle 25 feet tall, which will burn throughout the 100 days of the exposition as a symbol of international good will.

A grandstand will be built on the bank of the cool Columbia river and water events will be staged in a natural setting, while ice shows and similar evening performances will be presented indoors in the 8000 seat centennial coliseum.



MAY 1, 1959  
Subject to change without notice



The Northwest's Own Railway  
THROUGH SERVICE

VIA

NORTH COAST  
LIMITED

EMPIRE  
BUILDER



# TIME TABLES

*Pacific Standard Time*

TRAVEL THE  
COLUMBIA RIVER  
SCENIC ROUTE  
THROUGH THE  
CASCADE RANGE

MAY 1, 1959  
Subject to change without notice



The Northwest's Own Railway  
THROUGH SERVICE

VIA

NORTH COAST  
LIMITED

EMPIRE  
BUILDER



# TIME TABLES

*Pacific Standard Time*

TRAVEL THE  
COLUMBIA RIVER  
SCENIC ROUTE  
THROUGH THE  
CASCADE RANGE





# SPokane, PORTLAND AND SEATTLE RAILWAY SYSTEM

S. P. & S. RY. - OREGON TRUNK RY. - OREGON ELECTRIC RY. - (Subsidiaries of Northern Pacific and Great Northern Railways)

## TRANSCONTINENTAL TRAIN SERVICE - BETWEEN PORTLAND, PASCO AND EAST

### SPokane, PORTLAND AND SEATTLE, NORTHERN PACIFIC AND CHICAGO, BURLINGTON AND QUINCY RAILWAYS

West Bound, Read Down				Eastbound, Read Up			
Daily C. B. & Q. No. 31	Daily The Main-street C. B. & Q. No. 47	Daily North Coast Ltd. No. 25	Chicago, Burlington and Quincy Railway (Central Time)	Daily North Coast Ltd. No. 26	Daily The Main-street C. B. & Q. No. 48	Daily C. B. & Q. No. 22	
2.00	10.45	12.10	Lv Chicago (Union Station).....Ar	2327	1.45	8.15	2.45
12.36	11.25	b12.47	Lv Aurora.....Ar	2289	7.26	7.26	2.05
4.10	1.36	2.24	Lv Savanna.....Ar	2182	11.19	5.36	12.32
6.18	4.28	4.36	" LaCrosse.....Ar	2030	9.04	2.22	10.21
8.45	7.30	6.55	Ar St. Paul (Union Station).....Lv	1900	7.00	11.30	8.25
<b>N.P. 3</b>				<b>N.P. 2</b>			
8.50	8.40	7.15	Lv St. Paul (Union Station).....Ar	1900	6.40	7.15	7.15
9.35	9.15	7.45	Lv Minneapolis (Hen. Av. Stn.)Ar	1890	6.10	9.42	6.40
<b>The Main-street</b>				<b>The Main-street</b>			
6.05	7.25	6.05	Lv Duluth.....Ar	1881	7.30	10.55	7.30
6.16	7.39	6.16	" Superior.....Ar	1877	7.14	10.34	7.14
<b>Vista-Dome North Coast Limited</b>				<b>Vista-Dome North Coast Limited</b>			
1.15	11.51	9.56	Lv Staples.....Ar	1733	3.44	6.55	1.56
5.30	2.30	11.55	" Fargo.....Ar	1622	1.42	4.05	10.15
8.35	4.27	11.55	" Jamestown.....Ar	1530	12.03	2.13	7.35
11.28	3.10	2.30	" Bismarck.....Ar	1428	10.20	12.31	4.50
11.10	6.57	2.30	" Mandan (Mountain Time).....Ar	1423	9.04	11.08	3.20
2.10	8.10	4.15	" Dickinson.....Ar	1322	7.16	9.03	12.30
4.45	10.45	6.12	" Glendive.....Ar	1217	5.14	6.36	9.45
	12.35	7.32	" Miles City.....Ar	1138	3.48	4.51	
	1.45	8.32	" Forsyth.....Ar	1093	2.86	3.42	
	4.23	10.25	Lv Billings.....Ar	991	1.06	1.23	
<b>#9.45</b>				<b>#9.45</b>			
	7.25	12.33	Lv Gardiner (Yel. Nat'l Park).....Ar	929			
	8.27	1.19	Lv Livingston.....Ar	875	10.56	10.43	
	11.30	3.49	" Bozeman.....Ar	851	10.11	9.45	
	11.30	3.20	" Butte.....Ar	756	7.40	6.25	
	1.40	4.60	" Helena.....Ar	704	7.35	6.45	
	3.35	6.15	" Garrison.....Ar	636	6.29	4.45	
	4.40	7.10	" Missoula.....Ar	565	5.08	2.55	
	8.30		" Paradise (Pacific Time).....Ar	446	2.17	11.56	2.15
	9.25		" Sandpoint.....Ar	418		9.40	10.35
	10.35		" Athol.....Ar	378		9.40	8.30
		10.45	Ar Spokane (N.P. Station).....Lv		10.45	8.18	
<b>N.P. 5</b>				<b>No. 2</b>			
7.25	8.50	10.53	Lv Spokane (N.P. Station).....Ar	378	10.38	7.58	6.50
10.35	12.01	1.33	Ar Pasco.....Lv	231	7.50	4.50	3.35
<b>S.P.S. No. 5</b>				<b>S.P.S. No. 4</b>			
2.50	12.55	2.40	Lv Pasco.....Ar	231	7.20	2.00	2.00
5.35	3.20	4.45	Ar Wishram.....Lv	106	5.00	11.53	11.25
7.50	5.30	6.35	" Vancouver.....Ar	10	3.22	10.10	8.55
8.20	*6.00	7.00	Ar Portland (Union Station).....Lv	10	3.00	9.45	8.30

3-21-43		29	C.B. & Q. Connections at Billings for Denver & Mo. River Points		30	42-20-12
8.45			Lv St. Louis (Wab.).....Ar			9.45
5.00			Lv Kansas City (CB & Q).....Ar			1.15
6.35			Lv St. Joseph.....Ar			11.41
10.20			Lv Omaha.....Ar			8.20
12.25			Lv Lincoln.....Ar			6.50
7.15			Ar Billings.....Lv			11.00
		9.40	Lv Denver.....Ar		7.25	
		5.20	Ar Billings.....Lv		1.15	

a—Stops to let off or pick up revenue passengers from or to Missoula and east or Pasco and west where scheduled to stop.  
 b—Stops to receive revenue passengers for all scheduled stops.  
 c—Stops to discharge revenue passengers from west of Minneapolis.  
 \*Passengers may remain in sleeping cars at Portland until 7:30 A.M.  
 #Daily, except Sunday.  
 ① Arrive ② Leave Glendive daily except Sunday.  
 ③ Leave St. Paul daily except Saturday.

Light face figures denote A.M. time. Bold face figures denote P.M. time. Ar. Arrive. Lv. Leave. /Stop on Signal.

### EQUIPMENT

#### VISTA-DOME NORTH COAST LIMITED BETWEEN CHICAGO AND PORTLAND

All Lightweight Equipment  
S. P. & S. 1-2, N. P. 25-26, C. B. & Q. 25-26

**STANDARD SLEEPER-CLUB-LOUNGE CAR**—With 6 roomettes, 3 double bedrooms. Between Pasco and Portland. (Car 10 westbound, Car 20 eastbound.)

**OBSERVATION LOUNGE-SLEEPING CAR**—Between Chicago and Pasco. Four double bedrooms, 1 compartment, spacious lounge, radio, library, writing desk. Buffet service. (259 westbound, 269 eastbound.)

**VISTA-DOME SLEEPING CAR**—Between Chicago and Portland. Newest type all-room car. 4 Roomettes, 4 Duplex Single Rooms and 4 Double Bedrooms. (258 westbound, 268 eastbound.) Operates during summer season only.

**STANDARD SLEEPING CAR**—Between Chicago and Portland. Newest type all-room car. 3 double bedrooms, 1 compartment, 6 roomettes, 8 duplex roomettes. (257 westbound, 267 eastbound.)

**VISTA-DOME COACH**—Between Chicago and Portland. Chaise lounge "sleepy hollow" seats with leg rests for reclining full length. (C252 westbound, C262 eastbound). Seats reserved in advance. No extra charge.

**LEWIS & CLARK TRAVELLER'S REST BUFFET-LOUNGE CAR**—Between Chicago and Pasco. Select and a la carte meals, snacks and beverages, magazines, lounge section.

**DINING CAR SERVICE**—Between Chicago and Portland. Club breakfasts, \$1.55 to \$2.20; Table d'hote dinner, \$3.40; Table d'hote luncheon, \$2.60. Special plate luncheons and dinners, \$2.20. Also a la carte service.

**STEWARDESS NURSE SERVICE**—A Stewardess, who is also a registered nurse, is a member of the train personnel between Chicago and Pasco.

**TICKETS**—All classes of regular and reduced rate rail tickets will be honored for passage on the North Coast Limited except during period June 1 to September 30, reduced rate tickets will not be honored.

#### THE MAINSTREETER BETWEEN CHICAGO AND PORTLAND

S. P. & S. 3-4, N. P. 1-2, C. B. & Q. 47-48

**SLEEPER-BUFFET-LOUNGE CAR**—Between Spokane and Portland. (Car 30 westbound, car 40 eastbound.)

**HOLIDAY LOUNGE**—Between St. Paul and Pasco—Luxurious new Lounge car; lounge section with snack and beverage service open to all passengers.

**STANDARD SLEEPING CARS**—Between Chicago and Spokane 8 Duplex Roomettes, 3 Double Bedrooms, 1 Compartment and 6 Roomettes. (105 westbound, 205 eastbound.)

Through passengers will make station taxicab transfer at Spokane at no additional cost.

**DINING CAR SERVICE**—Between St. Paul and Pasco.

**DELUXE RECLINING SEAT COACHES**—Between Chicago and Pasco. Between St. Paul and Portland.

#### S. P. & S. No. 5-6, (Diesel Power), N. P. No. 5-6 COLUMBIA RIVER EXPRESS BETWEEN SPOKANE, PASCO AND PORTLAND

Reclining seat coach between Pasco-Portland and between Spokane-Pasco.

Light face figures denote A.M. time. Bold face figures denote P.M. time. Ar. Arrive. Lv. Leave. /Stop on Signal.

# SPokane, PORTLAND AND SEATTLE RAILWAY SYSTEM

S. P. & S. RY. - OREGON TRUNK RY. - OREGON ELECTRIC RY. - (Subsidiaries of Northern Pacific and Great Northern Railways)

## TRANSCONTINENTAL TRAIN SERVICE - BETWEEN PORTLAND, SPOKANE AND EAST

### VIA CHICAGO, BURLINGTON & QUINCY AND GREAT NORTHERN SPOKANE, PORTLAND AND SEATTLE RAILWAYS

Westbound, Read Down				Eastbound, Read Up			
Daily Western Star No. 47	Daily Empire Builder No. 31	Chicago, Burlington and Quincy Railroad (Central Time)	Miles from Portland	Daily Empire Builder No. 32	Daily Western Star No. 48		
10.45	2.00	Lv Chicago (Un. Stn.).....Ar	2260	2.00	8.15		
11.26	②2.36	" Aurora.....Ar	2222	①1.18	7.26		
1.36	4.10	" Savanna.....Ar	2115	11.39	5.36		
4.28	6.18	" LaCrosse.....Ar	1963	9.21	2.22		
7.30	8.45	Ar St. Paul (Un. Stn.).....Lv	1833	7.15	11.30		
<b>C'oh's only No. 27</b>				<b>C'oh's only No. 28</b>			
9.30	8.30	9.10	Lv St. Paul (Un. Stn.).....Ar	1833	7.00	10.26	9.55
10.03	9.00	9.40	" Minneapolis (GN Stn.).....Ar	1822	6.25	10.01	9.20
11.45		11.12	Lv Willmar.....Ar	1731	4.40		7.25
1.50		12.55	" Breckenridge.....Ar	1618	2.42		5.06
	10.18		" St. Cloud.....Ar				8.38
	12.24		" Fergus Falls.....Ar		1.23		6.18
2.55	1.59	1.50	" Fargo.....Ar	1571	1.23	6.10	3.53
	3.05		" Grand Forks.....Ar	1447			1.46
	5.49	5.35	" New Rockford.....Ar	1336	11.03		11.59
6.13	7.30	7.57	Ar Minot.....Lv	1218	9.10	11.30	8.40
6.58	10.20	7.12	Ar Williston (Central Time) Lv	1218	6.20	7.30	
	9.39	7.12	Lv Williston (Mountain " )Ar	1062	2.45	4.26	
	12.40	6.45	" Glasgow.....Ar	909	11.50	1.15	
	4.01	12.26	" Havre.....Ar				
	7.01	③5.20	Ar Great Falls.....Lv	908	④8.50	10.05	
	7.25		Lv Great Falls.....Ar	804		9.40	
	10.15	2.15	Lv Shelby.....Ar	780	10.03	6.50	
	10.50	2.48	" Cut Bank.....Ar	733	9.35	6.15	
	/11.50		" Glacier Park.....Ar	676		5.13	
	1.28		" Belton.....Ar	661		3.28	
	1.56		" Columbia Falls.....Ar	676		3.05	
	①1.30	②6.40	Lv Kalispell.....Ar	676	⑦7.00	③3.20	
	2.20	6.00	Lv Whitefish.....Ar	653	6.25	2.40	
	5.05		" Libby.....Ar	537		12.07	
	5.30	8.50	Ar Troy (Mountain Time).....Ar	519	3.30	11.40	
	4.35	7.50	Lv Troy (Pacific Time).....Ar	519	2.30	10.35	
	5.28		" Bonner's Ferry.....Ar	488		9.47	
	6.09		Lv Sandpoint.....Ar	454		9.01	
	8.00	11.20	Ar Spokane (GN Stn.).....Lv	379	11.05	7.10	
<b>No. 3</b>				<b>Spokane, Portland and Seattle Railway</b>			
9.45	11.59	Lv Spokane (GN Stn.).....Ar	379	10.05	6.10		
12.55	2.40	" Pasco.....Lv	231	7.20	2.30		
3.20	4.45	Ar Wishram.....Lv	106	6.00	11.53		
5.30	6.35	" Vancouver.....Ar	10	3.22	10.10		
*6.00	7.00	Ar Portland (Un. Stn.).....Lv	0	3.00	9.45		

#### THE STREAMLINED WESTERN STAR (Lightweight Streamlined Equipment)

CHICAGO-PORTLAND NO EXTRA FARE

CB&Q 47-48, GN 3-4, SP&S 3-4

ALL CLASSES OF TICKETS HONORED

Sleeper-Buffer-Lounge Car between Spokane and Portland—(Car 30 Westbound, Car 40 Eastbound.)

Standard Sleeping Cars offering modern Pullman accommodations between Chicago and Portland, one car containing 4 Sections, 8 Duplex Roomettes and 4 Double Bedrooms. Double Bedrooms are connecting and may be sold ensuite (32 Westbound, 42 Eastbound.)

Streamlined Day-Nite Coaches between Chicago and Spokane. Deluxe coaches between Spokane and Portland (seats reserved June 14 to Sept. 8 only).

Buffet Service between Spokane and Portland.

Dining Car Service between St. Paul and Spokane. Traditional famous Great Northern meals. Club breakfasts, plate luncheons, table d'hote luncheons, plate dinners, table d'hote dinners. Also a la carte service for all meals.

Lounge-Observation Car between Chicago, St. Paul and Minot.

\*Passengers may remain in sleeping cars at Portland until 7:30 A. M. ①Stops to receive revenue passengers for all scheduled stops. ②Stops to discharge revenue passengers from west of Minneapolis. c—No. 31 stops at Glasgow to discharge revenue passengers from Minot and East and to receive revenue passengers for Spokane and West where No. 1 is scheduled to stop. d—No. 32 stops at Glasgow to discharge revenue passengers from Spokane and West and to receive revenue passengers for Minot and East where No. 2 is scheduled to stop. e—No. 31 stops at Cut Bank to discharge revenue passengers from Williston and east and to receive revenue passengers for scheduled stops Spokane and West. g—No. 32 stops at Cut Bank to discharge revenue passengers from Spokane and West and to receive revenue passengers for scheduled stops Williston and East. ④ Bus service, rail tickets honored.

Light face figures denote A.M. time. Bold face figures denote P.M. time. Ar. Arrive. Lv. Leave. /Stop on Signal.





# SPOKANE, PORTLAND AND SEATTLE RAILWAY SYSTEM

S. P. & S. RY. - OREGON TRUNK RY. - OREGON ELECTRIC RY. - (Subsidiaries of Northern Pacific and Great Northern Railways)

## PORTLAND - WISHRAM - PASCO - SPOKANE TRAINS

Westbound, Read Down				Eastbound, Read Up								
SPS No. 3 Daily	NP 1 SPS 3 Daily	NP 5 SPS 5 Daily	NP No. 25 SPS No. 1 Daily	SPS No. 1 Daily	Ele-va.	Spokane, Portland and Seattle Railway	Miles from Portland	SPS 6 No. 6 Daily	SPS No. 2 Daily	SPS 4 NP 2 Daily	SPS No. 4 Daily	SPECIAL STOPS No's 1 & 2 Stops only as shown
9.45	8.50 N.P. Ry. No. 1	7.25 N.P. Ry. No. 5	10.53	11.59	1871	Spokane (business capital of...)	379.5		10.05		6.10	No. 3. At any station to discharge revenue passengers from east of Spokane.
10.38	Spokane to Pasco	Vista-Dome	Streamlined Empire Builder		1920	Great No. Station Inland Empire Ar	377.5	6.50	10.38	7.58		At any station east of Pasco to receive revenue passengers for Vancouver and Portland.
11.01	Provisional Stops at Cheney	Cheney	North Coast Limited		2215	Nor. Pac. Station	370.7			NP Ry. No. 2	4.56	At any station west of Pasco to discharge revenue passengers from Spokane.
11.22	Cheney Sprague	Sprague	Coast Limited		2215	South Cheney	360.7			Provisional Stops at Cheney	4.00	No. 4. At any station to receive revenue passengers destined east of Spokane.
11.36	Ritzville Lind Connell	Ritzville Lind Connell	Via N.P. Ry. Spokane to Pasco		2215	Amber	349.5			Lind Connell	4.50	At any station west of Pasco to receive revenue passengers for Spokane.
12.40	12.01	10.35	1.33	2.30	2090	Rockwell	329.4			Connell	4.50	At any station east of Pasco to discharge revenue passengers from Portland or Vancouver.
12.55	1.05	2.50	2.40	2.40	2090	Macall	323.8				2.30	Stops to receive passengers made only upon advance arrangements through Agent. Stops to discharge passengers made upon application to conductor.
		2.58			1947	Benge	311.1				2.00	References:
		3.05			1826	Hooper	299.5				2.00	b Will stop on signal to receive revenue passengers for Vancouver and Portland.
		3.12			1706	Sperry	285.3				2.00	g Stops to discharge revenue passengers from Portland and Vancouver.
		3.25			1468	Kahlotus	277.8				2.00	m Stops to receive or discharge revenue passengers to or from Pasco and East.
		3.33			1067	Farrington	268.6				2.00	n to dispatch U. S. mail.
		3.38			964	Snake River	256.3				2.00	* Passengers may remain in sleeping cars at Portland until 7:30 A. M.
		3.52			888	Redd	240.8				2.00	• Stops to entrain or de-train revenue passengers to or from points East of Spokane provided advance arrangements are made through agent.
		3.55			719	Levy	231.3				2.00	t Telegraph stations.
		4.02			496	PASCO	231.3				2.00	
		4.12			466	PASCO	231.3				2.00	
		4.17			454	PASCO	231.3				2.00	
		4.27			358	PASCO	231.3				2.00	
		4.37				PASCO	231.3				2.00	
		4.49				PASCO	231.3				2.00	
		5.02				PASCO	231.3				2.00	
		5.14				PASCO	231.3				2.00	
		5.25				PASCO	231.3				2.00	
		5.35				PASCO	231.3				2.00	
		5.51				PASCO	231.3				2.00	
		6.02				PASCO	231.3				2.00	
		6.17				PASCO	231.3				2.00	
		6.22				PASCO	231.3				2.00	
		6.24				PASCO	231.3				2.00	
		6.31				PASCO	231.3				2.00	
		6.42				PASCO	231.3				2.00	
		6.48				PASCO	231.3				2.00	
		6.55				PASCO	231.3				2.00	
		7.04				PASCO	231.3				2.00	
		7.09				PASCO	231.3				2.00	
		7.16				PASCO	231.3				2.00	
		7.22				PASCO	231.3				2.00	
		7.30				PASCO	231.3				2.00	
		7.35				PASCO	231.3				2.00	
		7.50				PASCO	231.3				2.00	
		8.00				PASCO	231.3				2.00	
		8.05				PASCO	231.3				2.00	
		8.20				PASCO	231.3				2.00	

FOR THROUGH SERVICE AND CONSIST OF ALL TRAINS, SEE PRECEDING PAGES 2 and 3.

### A TRANS-CONTINENTAL SYSTEM OF RAILWAYS THROUGH AMERICA'S WONDERLAND

Traversing the northern states between the Pacific Northwest and Chicago presents a veritable wonderland offering passengers a splendid variety of ever-changing scenery.

Over these lines, between Portland and Chicago, are operated four of America's famous trains, the Streamlined Empire Builder and the Streamlined Western Star, via S.P.&S. Spokane, G.N. St. Paul, C.B.&Q. Chicago, and the Streamlined Vista Dome North Coast Limited and The Streamlined Mainstreeter via S.P.&S. Pasco, N.P. St. Paul and C.B.&Q. Chicago where connections are made to all points east and south.

These trains provide passengers with every feature of modern railway travel for their comfort, and pleasure.

Light face figures denote A.M. time. Bold face figures denote P.M. time. Ar. Arrive. Lv. Leave. /Stop on Signal.

# SPOKANE, PORTLAND AND SEATTLE RAILWAY SYSTEM

S. P. & S. RY. - OREGON TRUNK RY. - OREGON ELECTRIC RY. - (Subsidiaries of Northern Pacific and Great Northern Railways)

## PORTLAND - REDMOND - BEND TRAINS

Read Down		Read Up	
No. 105 Sat. Only	No. 103 Daily Ex. Sat. & Sun.	Oregon Trunk Ry.	No. 102 Daily Ex. Sun.
3618	7.00	Lv Bend	7.00
3572	7.11	Deschutes	6.35
2983	7.30	Redmond	6.15
2918	7.35	Prineville Jct.	5.50
2863	7.40	Terrebonne	5.45
2850	7.52	Opal City	5.31
2624	8.02	Culver	5.18
2517	8.12	Metolius	5.10
2458	8.25	Madras	5.00
2169	8.35	Paxton	4.34
1787	8.51	Gateway	4.18
1254	9.13	South Jet	3.56
	9.18	Axford	3.49
	9.24	Kaskela	3.45
	9.40	Hardy	3.31
	9.50	Dant	3.19
	9.57	Nena	3.11
	10.20	Maupin	2.53
	10.28	Tuskan	2.45
	10.35	Sherar	2.39
	10.51	Oakbrook	2.23
	11.10	Sinamox	2.04
	11.18	Dike	1.55
	11.35	Lockit	1.38
	12.01	Moody	1.13
	12.15	Ar Wishram	1.00

### SAVE MONEY ON HALF-FARE FAMILY TRAVEL PLAN!

Take advantage of our Family Fares. Start your going trip on Monday, Tuesday, Wednesday or Thursday, with return any day of the week.

**ONE-WAY TRAVEL**—Head of family pays regular one-way fare, first class or coach, other parent and children, 12 through 21, each pay half fare. Children 5 through 11, pay one-quarter fare. Children under five are carried free.

**ROUND-TRIP TRAVEL**—Head of family pays regular round trip fare, first class or coach, other parent and children, 12 through 21, each pay one-way fare for the round trip. Children, 5 through 11, pay half of the one-way fare for round trip. Children under five are carried free.

For details consult any Spokane, Portland and Seattle Railway travel representative.

### PACIFIC TRAILWAYS

Read Down			Read Up		
Dly.	Dly.	Dly.	Dly.	Dly.	Dly.
6.15	3.15	7.30	Lv PORTLAND	5.55	1.20
9.23	6.25	10.45	Ar Madras	2.40	10.05
10.00	7.08	11.28	Ar Redmond	2.05	9.25
10.25	7.35	12.01	Ar BEND	1.45	9.00

Rail tickets routed via OT - S. P. & S. Railways from or to Central Oregon points will be honored to or from Portland, Oregon by the Mt. Hood Stages (Pacific Trailways). Ask agent for details.

### EQUIPMENT BETWEEN PORTLAND and BEND

Trains Nos. 4-102 and 105-3. Coaches daily between Portland and Wishram and Daily except Sunday between Wishram and Bend. Observation Lounge Buffet cars daily between Portland and Wishram. See pages 2, 3 and 4.

### RAIL TRAVEL CREDIT CARD PLAN

permits purchase of Rail and Pullman tickets from any S. P. & S. Ry. Co. agent on Credit by securing a Credit Card from the Rail Travel Credit Agency, Room 436 Union Station, Chicago, Ill.

### "DRIVURSELF" RAIL-AUTO SERVICE

provides a new automobile at your destination or stop over point. Ask the agent for further details on any of the above plans.

### FREIGHT SERVICE ONLY

is operated on the following Branches

**S. P. & S. Railway**

Miles	STATIONS
0	Lyle
10.3	Pit
13.4	Klickitat
16.9	Wahkiakus
30.2	Warwick
35.3	Centerville
41.6	Goldendale

### VERNONIA BRANCH

Miles	STATIONS
0	Portland
7.3	Linnton
11.7	Burlington
17.1	Bowers Junction
21.9	North Plains
27.5	Banks
31.7	Manning
43.1	Braun
48.5	Vernonia

### Oregon Electric Railway

### PORTLAND-SALEM-ALBANY-EUGENE LINE

Miles	STATIONS
0	Portland
21.5	Forest Grove Jct
27.6	Beaverton
32.1	Tigard
36.1	Tualatin
39.0	Tonquin
43.0	Wilsonville
49.1	Donald
57.4	St. Louis
63.1	Hopmire
64.1	Quinaby
71.2	Salem
79.9	Orville
96.5	Albany Yard
97.8	Albany
124.2	Harrisburg
128.7	Junction City
142.8	Eugene


### FOREST GROVE BRANCH

Miles	STATIONS
0	Forest Grove Jct
0.8	Orencia
4.5	Hillsboro
7.9	Cornelius
10.6	Forest Grove

### SANTIAM BRANCH

Miles	STATIONS
0	Albany Yard
4.5	Froman
6.7	Fry
8.4	Goltra
10.3	Tallman
14.1	Lebanon
15.9	Weidwood
20.2	Waterloo
22.1	Nye
28.8	Sweet Home
31.9	Foster
0	Sweet Home
6.4	Holley
8.1	Callapooya
15.5	Dollar

Wherever you're headed always



Telegraph

- To keep in touch
- To make arrangements
- To flash arrival time

Western Union

Light face figures denote A.M. time. Bold face figures denote P.M. time. Ar. Arrive. Lv. Leave. /Stop on Signal. t Telegraph Office.





# SPOKANE, PORTLAND AND SEATTLE RAILWAY SYSTEM

CONNECTIONS AT PORTLAND  
S. P. & S. RY. - OREGON TRUNK RY. - OREGON ELECTRIC RY. - (Subsidiaries of Northern Pacific and Great Northern Railways)

## PORTLAND - PUGET SOUND - BRITISH COLUMBIA

Northern Pacific Ry. - Great Northern Ry. - Union Pacific R. R.

Northbound-Read Down				Southbound-Read Up				
G.N.	G.N.	N.P.	U.P.	G.N.	N.P.	U.P.	G.N.	
401	459	407	457	460	408	458	402	
Daily	Daily	Daily	Daily	Daily	Daily	Daily	Daily	
11.45	1.30	5.25	9.00	Lv. Portland, Un. Sta. Ar.	12.30	4.30	9.15	6.05
12.11	1.49	5.44	9.21	Lv. Vancouver, Wn. Ar.	12.08	4.08	8.51	5.30
12.52				Ar. Kalama, Lv.	11.35			4.55
1.17	2.28	6.24	10.01	Ar. Kelso-Longview, Lv.	11.24	3.24	8.04	4.38
1.32				Ar. Castle Rock, Lv.	11.12			4.10
2.19	3.12	7.06	10.43	Ar. Chehalis, Lv.	10.39	2.39	7.18	3.20
2.30	3.23	7.16	10.53	Ar. Centralia, Lv.	10.32	2.32	7.11	3.00
				Ar. East Olympia, Lv.	10.08	2.08	6.47	2.08
4.15	4.31	8.24	12.01	Ar. Tacoma, Lv.	9.26	1.26	6.02	1.15
6.00	6.30	9.25	1.00	Ar. Seattle, Lv.	8.30	12.30	5.00	11.45

## SOUTHERN PACIFIC COMPANY

Southbound-Read Down				Northbound-Read Up			
19	11	9		12	20	10	
10.15	4.45	7.45	Lv. Portland, Ar.	8.15	7.55	11.25	
11.57	5.57	8.57	Ar. Salem, Lv.	7.02	5.57	10.11	
12.42	6.28	9.28	Ar. Albany, Lv.	6.34	5.15	9.43	
1.35	7.09	10.09	Ar. Eugene, Lv.	5.55	4.10	9.04	
7.25	11.33	2.25	Ar. Klamath Falls, Lv.	1.35	10.20	4.40	
1.20	4.10	6.35	Ar. Redding, Lv.	9.16	3.40	12.14	
6.55	7.15	9.40	Ar. (a) Sacramento, Lv.	5.50	8.35	9.00	
6.15	7.35	9.57	Ar. Martinez, Lv.	5.35	9.45	8.45	
7.15	8.20	10.40	Ar. Oakland, 16th St., Lv.	4.35	8.45	8.00	
7.45	9.00	11.20	Ar. San Francisco, Lv.	3.55	8.10	7.20	
10.40	7.15	10.40	Ar. Los Angeles, Lv.	5.40		5.15	

## CONNECTIONS AT SPOKANE AND PASCO

Bus Dly	Bus Dly	Great Northern Ry.	Bus Dly	Bus Dly
6.15	9.20	Lv. Spokane, Ar.	12.20	7.15
6.50	9.52	Ar. Deer Park, Lv.	11.40	6.40
7.45	10.45	Ar. Chewelah, Lv.	10.55	5.50
8.10	11.20	Ar. Colville, Lv.	10.20	5.20
8.30	11.52	Ar. Kettle Falls, Lv.	10.00	4.55
	12.43	Ar. Northport, Lv.		4.10
	1.40	Ar. Trail, B.C., Lv.		3.20
	4.25	Ar. Nelson, Lv.		10.50

**EQUIPMENT OF TRAINS**  
Trains 9-10, Shasta Daylight—Streamlined Air Conditioned Train—Parlor Obs. Reclining Chair Cars between Portland and San Francisco. Coffee Shop service. All seats reserved.  
Train 58 will take transfers from No. 9 at Martinez.  
Train 57 will make transfer to No. 10 at Oakland 16th Street Station.  
Train 11-12, Cascade—(Streamlined, Air Conditioned). Between Portland and San Francisco. Standard sleeping cars with drawing rooms, compartments, bedrooms, roomettes, lounge and dining car. Reserved seat chair car.  
Train 19-20, Passenger—(Air Conditioned). Between Portland and San Francisco. Chair car only. No meal service.

Great Northern Ry. Bend, Klamath Falls Bieber	SP&S			Northern Pacific Walla Walla		SP&S		
	4	2	6	3	1	5		
	9.45	3.00	8.30	Lv. Portland, Ar.	6.00	7.00	8.20	
	2.00	7.05	2.00	Ar. Pasco, Lv.	12.55	2.40	2.50	
(Freight Service Only)								
	7.45	8.00	3.55	Lv. Pasco, Ar.		11.25	1.15	
	8.05	8.20	4.15	Lv. Wallula, Ar.		11.10	12.55	
	8.50	9.00	5.00	Ar. Walla Walla, Lv.		10.25	12.15	
Miles								
0	Bend, .....							
15	Lava Jet, .....							
32	La Pine, .....							
52	Crescent, .....	4-5 Dly	6-25 Dly	6-1 Dly	Northern Pacific West of Pasco	2-5 Dly	6-3 Dly	26-3 Dly
68	Chemult, .....							
110	Chiloquin, .....	9.45	8.30	8.30	Lv. Portland, Ar.	8.20	6.00	6.00
133	Algoma, .....	2.00	2.00	2.00	Ar. Pasco, Lv.	2.50	12.55	12.55
144	Klamath Falls, .....	10.50	1.48	12.26	Lv. Pasco, Ar.	4.25	3.20	7.35
159	Merrill, .....	11.02		12.36	Ar. Kennewick, Lv.	4.15	3.10	
210	Scarface, .....	11.54		1.21	Ar. Prosser, Lv.	3.25	2.25	
222	Lookout, .....	12.34		1.58	Ar. Toppenish, Lv.	2.49	1.50	
234	Bieber, .....	1.05	3.37	2.25	Ar. Yakima, Lv.	2.25	1.25	5.50
		2.13	4.37	3.47	Ar. Ellensburg, Lv.	1.11	12.12	4.45

SAN FRANCISCO - LOS ANGELES - COAST LINE									
90	76	98	M		75	91	99		
12.20	8.00	7.15	0	Lv. San Francisco, Ar.	7.30	4.25	5.00		
1.40	9.11	8.06	47	Ar. San Jose, Lv.	6.13	3.15	4.05		
8.50	2.08	12.23	248	Ar. San Luis Obispo, Lv.	1.15	8.00	11.51		
12.50	4.48	2.41	367	Ar. Santa Barbara, Lv.	10.34	3.45	9.30		
4.30	7.30	5.00	470	Ar. Los Angeles, Lv.	8.00	12.15	7.15		

SAN FRANCISCO - LOS ANGELES - VALLEY LINE									
60	58	52	M		57	51	59		
		6.15	0	Lv. San Francisco, Ar.	6.40	7.05			
		6.55	4	Lv. Oakland Pier, Ar.	6.00	6.25			
		7.15		Lv. Sacramento, Ar.		5.45	7.00		
11.30	2.40	11.44	205	Lv. Fresno, Lv.	1.35	1.20	3.00		
1.54	5.07	2.00	313	Lv. Bakersfield, Lv.	10.50	11.05	12.16		
7.10	10.40	7.15	482	Ar. Los Angeles, Lv.	5.15	5.40	6.25		

UNION PACIFIC RAILROAD									
Read Down					Read Up				
18	106	12		17	105	11			
Daily	Daily	Daily		Daily	Daily	Daily			
9.30	1.00	7.10	Lv. Portland, Ar.	5.30	8.30	8.00			
10.54	2.14	8.54	Lv. Hood River, Lv.	3.47	7.13	6.15			
11.30	2.45	9.25	The Dalles, .....	3.10	6.45	5.49			
3.05	4.56	12.20	Pendleton, .....	11.20	4.25	1.65			
7.00	8.05	3.45	Baker, .....	7.22	1.15	10.04			
10.18		7.08	Payette, .....	5.54		8.25			
10.30		7.20	Ontario, .....	5.44		8.14			
11.30	11.55	8.15	Nampa, .....	4.35	11.28	7.00			
12.05	12.20	8.55	Boise, .....	3.55	11.00	6.10			
5.10	4.00	2.00	Ar. Pocatello, .....	10.35	7.15	12.50			
8.55		6.28	Ar. Ogden, Lv.	6.30		8.50			
9.55		8.50	Ar. Salt Lake, Lv.	5.05		6.45			
7.10			Ar. Cheyenne, Lv.	9.15	8.10				
9.45	3.20		Ar. Denver, Lv.	6.50					

## MARK YOUR BAGGAGE

All baggage, whether checked or carried with you, should be plainly marked with your name and permanent address. This will insure prompt recovery should it become lost or go astray. Remove all obsolete labels and addresses.  
JEWELRY, CURRENCY, VALUABLE PAPERS and LIQUIDS should not be placed in baggage intended for checking. The railway will not assume responsibility for loss of, or damage to such articles.

4-311 Daily		NORTHERN PACIFIC		314-3 Daily	
9.45	Lv. Portland, Ar.	6.00		6.00	
7.58	Ar. Spokane, Lv.	8.50		8.50	
8.45	Lv. Spokane, Ar.	8.30		8.30	
9.14	Spangle, .....	8.02		8.02	
9.35	Rosalia, .....	7.41		7.41	
9.51	Oakesdale, .....	7.25		7.25	
10.11	Garfield, .....	7.05		7.05	
10.31	Falouse, .....	6.48		6.48	
10.59	Fullman, .....	6.22		6.22	
11.18	Moscow, .....	6.01		6.01	
12.04	Kendrick, .....	5.14		5.14	
12.11	Luliaetta, .....	5.07		5.07	
12.45	Lewiston, Lv.	4.30		4.30	

# SPOKANE, PORTLAND AND SEATTLE RAILWAY SYSTEM

S. P. & S. RY. - OREGON TRUNK RY. - OREGON ELECTRIC RY. - (Subsidiaries of Northern Pacific and Great Northern Railways)



## Sleeping, Parlor Car and Reserved Seat Fares

Federal Tax Extra

For information only. Subject to change without notice.

BETWEEN	PORTLAND		SPOKANE		BETWEEN	PORTLAND		SPOKANE	
	Parlor Car Seat	Lower Berth Standard	Lower Berth Standard	Parlor Car Seat		Lower Berth Standard	Lower Berth Standard		
AND					AND				
Billings, .....		\$12.25	\$ 7.90		Minneapolis, .....	\$20.80	\$17.70		
Bingen-Wb. Salmon, Wn. ....			5.80		Missoula, .....	8.70	5.80		
Boston, .....		33.20	29.50		New Orleans, .....	29.05	26.80		
Bozeman, .....		11.00	6.70		New York, .....	33.20	29.50		
Buffalo, .....		29.50	26.00		Oakland, .....	10.00	14.05		
Butte, .....		9.95	5.80		Omaha, .....	20.80	17.70		
Camas, .....			5.80		Pasco, .....	2.35	5.80		
Chicago, .....		24.20	20.80		Philadelphia, .....	32.15	28.70		
Cincinnati, .....		26.80	23.15		Pittsburgh, .....	28.70	25.00		
Cleveland, .....		27.50	24.20		Portland, .....		5.80		
Denver, .....		17.00	15.90		St. Louis, .....	23.15	20.15		
Detroit, .....		26.80	23.15		St. Paul, .....	20.80	17.70		
Duluth, .....		20.80	17.70		San Francisco, .....	10.00	14.05		
Eugene, .....	1.35	6.10	7.05		Seattle, .....	1.60	5.80		
Fargo, .....		18.85	14.70		Spokane, .....	2.95	5.80		
Gardiner, .....		11.75	7.55		Stevenson, .....		5.80		
Glacier Park, .....		9.50	5.80		Tacoma, .....	1.20	5.80		
Great Falls, .....		11.75	7.05		Vancouver, .....		5.80		
Havre, .....		11.75	7.55		Washington, .....		32.15		
Helena, .....		9.95	5.80		Wishram, .....		5.80		
Kansas City, .....		22.20	19.10						
(Via St. Paul, Minn.)			9.50						
Klamath Falls, .....	3.05	6.10	9.50						
Livingston, .....		11.45	7.05						
Los Angeles, .....		14.45	18.10						
Louisville, .....		26.80	23.15						
Lyle, .....			5.80						

Ⓢ Railroad Owned Cars.

## RATES FOR SLEEPING CAR ACCOMODATIONS

Where Standard Lower Berth Is	Upper Berth Is	Duplex-Roomette Is	ROOMETTE		Duplex Single Room		BEDROOM		Bedroom Suite		Compartment		Drawing Room	
			For One Person	For Two Persons	For One Person	For Two Persons	For One Person	For Two or More Persons	For Two or More Persons	For One Person	For Two or More Persons	For One Person	For Two or More Persons	
\$ 5.80	\$ 4.40	\$ 6.35	\$ 8.10	\$ 9.20	\$ 9.20	\$10.40	\$10.90	\$12.75	\$21.85	\$11.55	\$13.85	\$15.90	\$19.35	
6.10	4.60	6.65	8.50	9.65	9.65	10.90	11.45	13.40	22.95	12.15	14.55	16.70	20.30	
6.70	5.15	7.40	9.40	10.65	10.65	12.05	12.75	14.65	25.45	13.40	16.05	18.40	22.40	
7.05	5.40	7.85	9.95	11.40	11.40	12.85	13.40	15.50	28.75	14.10	16.95	19.40	23.65	
7.55	5.65	8.30	10.55	12.05	12.05	13.60	14.40	16.65	28.80	15.10	18.10	20.75	25.25	
7.90	6.10	8.75	11.05	12.75	12.75	14.30	15.10	17.50	30.15	15.85	19.00	21.75	26.55	
8.70	6.65	9.65	12.20	13.90	13.90	15.55	16.65	19.20	33.30	17.45	20.90	23.95	29.20	
9.50	7.15	10.55	13.25	15.25	15.25	17.05	18.15	20.95	36.25	19.05	22.85	26.20	31.90	
9.95	7.55	10.95	13.80	15.90	15.90	17.75	18.90	21.90	37.75	19.90	23.85	27.40	33.35	
10.00	7.50	11.10	13.90	16.00	16.00	17.90	19.05	22.00	38.05	20.00	24.00	27.50	33.50	
11.00	8.40	12.25	15.50	17.65	17.65	19.85	20.95	24.30	41.95	22.05	26.45	30.35	36.90	
11.45	8.65	12.70	16.00	18.25	18.25	20.60	21.70	25.20	43.45	22.90	27.50	31.50	38.35</	



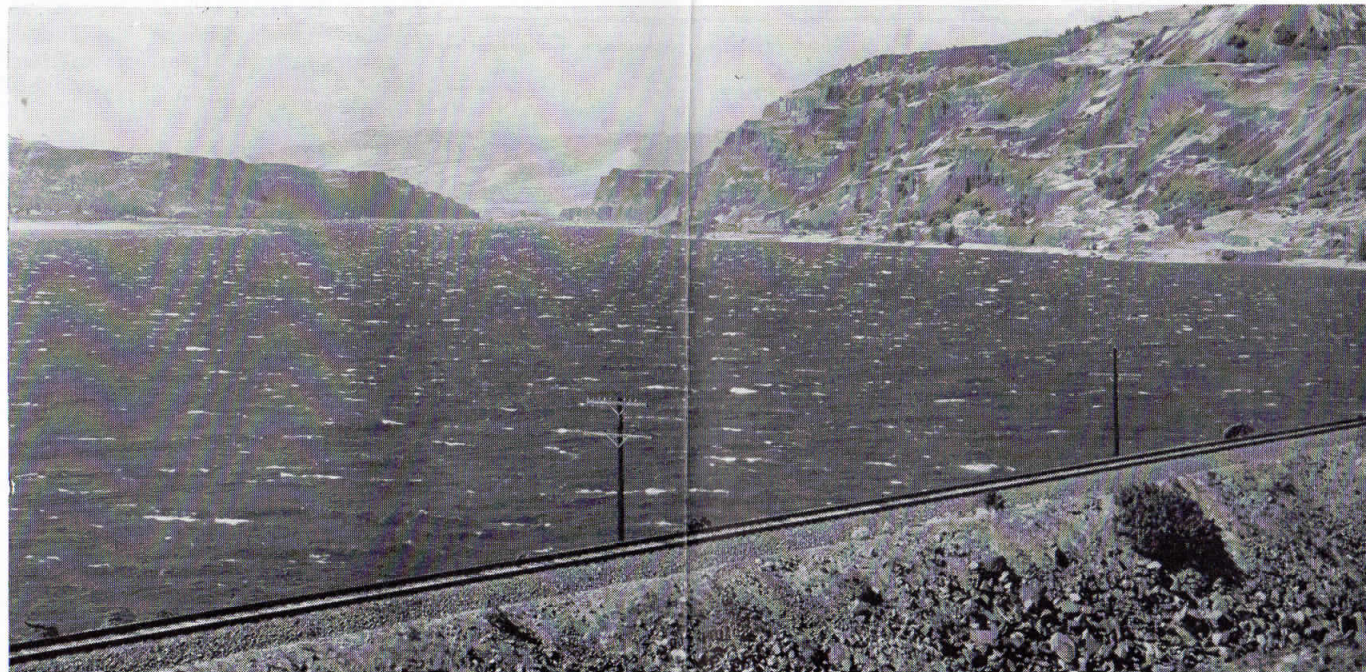


# SPOKANE, PORTLAND AND SEATTLE RAILWAY SYSTEM

S. P. & S. RY. — OREGON TRUNK RY. — OREGON ELECTRIC RY. — (Subsidiaries of Northern Pacific and Great Northern Railways)



S. P. & S. Ry. Near Bingen-White Salmon, Washington



S. P. & S. Ry. Along The Columbia River Near Lyle, Washington



# SPOKANE, PORTLAND AND SEATTLE RAILWAY SYSTEM

S. P. & S. RY. — OREGON TRUNK RY. — OREGON ELECTRIC RY. — (Subsidiaries of Northern Pacific and Great Northern Railways)



Oregon Trunk Ry. Near Moody, Oregon



Portland — the Rose City

Your Choice of... Three Daily Trains  
Between PORTLAND and SPOKANE

See Page 4 For Detailed Schedules

**EASY** way  
to ship anything

Just phone Railway Express.  
Prompt pick-up and fast  
delivery within established  
vehicle limits.



... safe, swift, sure





# SPOKANE, PORTLAND AND SEATTLE RAILWAY SYSTEM

S. P. & S. RY. - OREGON TRUNK RY. - OREGON ELECTRIC RY. - (Subsidiaries of Northern Pacific and Great Northern Railways)

## GENERAL INFORMATION

**NOTE**—This folder has been compiled with care, but may contain errors. Furthermore, it is sometimes necessary to change schedules without notice, trains shown are sometimes unavoidably delayed and connections missed. We hope none of our patrons will be inconvenienced by any of these causes, but the Railway Company will not be liable therefor.

**ADJUSTMENT OF FARES.** In cases of dispute with conductors or agents, passengers should pay fare required, take receipt and communicate with Auditor Revenue Accounts, S. P. & S. Ry., Box 571, Portland 7, Ore.

**REDEMPTION OF TICKETS.** Wholly unused tickets will be redeemed by selling agent. Partly used tickets will be redeemed under tariff regulations on application to Auditor Revenue Accounts.

**TICKET LIMITS.** Tickets will be honored for continuous passage to destination when presented not later than 4:00 a.m. standard time of the day following date of expiration as punched or otherwise shown on ticket. One-way tickets will be honored for passage within 30 days, round-trip tickets 6 months, in addition to date of sale.

**FEDERAL TAX.** Fares quoted in this folder do not include 10% Federal tax.

**STOPOVERS** will be allowed at all regular scheduled stops within limits, on application to Conductor.

**CHILDREN'S FARES.** Children under five years of age, when accompanied by parent or guardian, will be carried free of charge. Children five years of age and under twelve years of age will be charged one-half of the adult fares. Children of five and under twelve years of age who are not mature enough to take care of themselves when traveling alone must not be ticketed unless accompanied by parent or guardian. Children twelve years of age and over will be charged the adult fare.

**MARK YOUR BAGGAGE.** All baggage should show name and permanent address of owner. Appropriate gummed labels may be secured from Ticket or Baggage Agent.

**HAND BAGGAGE** in Pullmans is restricted to what can be conveniently placed in berth or at seat occupied by passenger.

**BAGGAGE MAXIMUMS.** Ordinarily 150 lbs. is free allowance for each adult ticket. No single piece of baggage exceeding 300 pounds in weight, or exceeding \$2500.00 in value will be checked. Free allowances are subject to tariff stipulation as to contents, weight, value and size.

**BAGGAGE INSURANCE.** A charge of only twenty-five cents is made for each hundred dollars value declared above \$100 for baggage checked for each adult passenger and above \$50 for each half-fare ticket. The maximum baggage valuation which may be insured on a single ticket is \$2500.

**LIMITED LIABILITY.** Excess value of baggage must be declared and paid for at time of checking.

**BICYCLES** (not motorcycles), baby carriages, dogs and guns are carried in baggage cars subject to tariff regulations.

**LOST ARTICLES** should be inquired for at the Baggage Office, Union Station, Portland, Oregon, or S. P. & S. Station, Spokane, Wash.

**RESPONSIBILITY.** No responsibility is assumed for unchecked articles left in stations or cars.

## GENERAL OFFICES

Amer. Bank Bldg., 621 S.W. Morrison St., Box 571, Portland 7, Oregon

R. S. MACFARLANE... President... St. Paul 1, Minn.  
 JOHN M. BUDD... Vice-President... St. Paul 1, Minn.  
 L. W. ALBERTSON... Vice-President... Portland, Oregon  
 N. S. WESTERGARD... General Manager... Portland, Oregon  
 GEO. F. EHLEN... Traffic Manager... Portland, Oregon  
 R. A. LAWRENCE... Asst. Traffic Manager... Portland, Oregon  
 W. J. CROSBIE... General Passenger Agent... Portland, Oregon  
 E. H. BLOCK... General Freight Agent... Portland, Oregon  
 F. J. HARRIS... Gen. Industrial Agent... Portland, Oregon  
 C. S. JOHNSON... Asst. General Industrial Agent... Portland, Oregon  
 J. L. MONAHAN... Superintendent... Portland, Oregon  
 D. J. RITCHIE... Gen'l Supt. Motive Power... Vancouver, Wash.  
 H. F. MOY... Secretary and Chief Engineer... Portland, Oregon  
 T. L. PADDEN... Treasurer... Portland, Oregon  
 W. T. COWAN... Purchasing Agent... Portland, Oregon  
 C. E. BROEDER... Comptroller... Portland, Oregon  
 H. L. KENDALL... Auditor Disbursements... Portland, Oregon  
 F. G. BURGARD... Auditor Revenue Accounts... Portland, Oregon  
 L. F. LAWSON... Auditor Miscl. Accounts... Portland, Oregon  
 G. C. GRAHAM... Auditor Machine Section... Portland, Oregon  
 W. J. SHEEHAN... Gen'l Claim Agent... Portland, Oregon  
 W. P. GARRETT... Right of Way and Tax Agent... Portland, Oregon  
 H. WENTZIEN... Superintendent Dining Cars... Portland, Oregon

### Representatives

ALBANY, ORE. R. E. MILLER (Phone Wabash 6-1546 or 6-1547) Agt., O. E. Ry. Sta.

ASTORIA, ORE. R. C. BAKER, 20th & Marine Drive (Ph. FAirfax 5-6111) Agt.

BEND, ORE. E. A. KOSKELA (Ev. 2-3911) Agt. Passenger Sta.  
 G. A. SILK WORTH (Ev. 2-2901) General Agent  
 W. C. BODNO (Ph. DI 5-8757) Agt., O.E.Ry. Sta.  
 W. Z. MYERS (Ph. Diamond 5-8759) General Agt.  
 F. J. KIRCHHOFF... Traveling Frt. & Pass Agent

HILLSBORO, ORE. C. F. DUERR (Ph. Midway 8-4241)

JUNCTION CITY, ORE. K. M. ELLER (Ph. WYman 8-2121) Agt., O.E.Ry. Frt. Dep.

LOS ANGELES 14, CALIF. Room 317 510 West Sixth St., Ph. Madison 9-1473  
 Great Northern Railway C. V. PAULSON... Traveling Passenger Agent  
 Northern Pacific Railway 510 West Sixth St., Phone Madison 7-2321  
 D. F. WALKER... General Agent

OAKLAND 12, CALIF. 807 Financial Center, Ph. Templebar 2-7672  
 Great Northern Railway C. G. ALEXANDER... District Passenger Agent  
 Northern Pacific Railway 611 First Western Bank Bldg.  
 Ph. Glencourt 1-8717

PORTLAND 7, ORE. SPENCER A. JEWELL... General Agent  
 M. L. THOMSON... GAPD (SP&S-NP. Rys.)  
 439 S.W. 6th Ave., Telephone Capitol 2-1311  
 A. W. GUSEY... GAPD (SP&S-GN. Rys.)  
 607 S.W. Washington St., Telephone CA 3-7273  
 F. M. SMITH, Ticket Agt., Union Station, Foot of N.W. 6th Ave., Telephone Capitol 7-3421

1101 American Bank Building  
 Phone Capitol 8-9111

T. J. MARTIN... District Passenger Agent  
 H. F. ERZ... General Agent, Freight Dept.  
 J. H. TAYLOR... Trav. Frt. & Pass. Agent  
 C. S. POWELL... City Freight Agent  
 H. W. MILLER... City Freight Agent  
 L. L. COX... City Freight Agent  
 J. D. SURLLES, Local Freight Agent, N. W. 11th and Hoyt, Phone Capitol 8-9111.

REDMOND, ORE. P. V. McMAHON (Ph. Lincoln 8-2217) Agt., Passenger Sta.

SACRAMENTO 14, CALIF. R. L. LAMB, Gen. Agt., G. N. Ry., 223 Forum Bldg.

ST. HELENS, ORE. J. L. McGRAW (Phone 658) Agt., S.P.&S. Station

SALEM, ORE. R. C. TETZLAFF (Ph. 3-3129) Agt., O.E.Ry. Fr. Dep.

SAN FRANCISCO 5, CALIF. Northern Pacific Railway 681 Market St. Phone Sutter 1-1078  
 DANIEL TINNEY... General Agent  
 Great Northern Railway 679 Market St. Phone Sutter 1-6051; 1-6052  
 A. L. SCOTT... Ass't. Gen. Passenger Agent

SEASIDE, ORE. S. K. SORENSON (Ph. Redfield 8-5322) Agent, S.P.&S. Ry. Sta.

SPOKANE 8, WASH. A. H. STUCKERT... General Agent  
 D. W. MORRISON, Traveling Frt. & Pass. Agt.  
 925 Old National Bank Bldg., Ph. MADison 4-4238  
 RAY L. DUBOIS, General Agent, Passenger Dept.,  
 Davenport Hotel, Phone MA 4-5141  
 R. E. MATTHEWS, JR., District Passenger Agent,  
 W. 221—First Avenue

B. B. McCANNON... Ticket Agent, Gt. Nor. Ry. Sta.  
 VANCOUVER, WASH. T. S. BRACE, Agt. (Ph. Oxford 3-1491), SP&SR Sta.  
 C. M. WAGNER (Phone Oxford 4-5151), Pass. Sta.

Agents of the Great Northern and Northern Pacific Rys. throughout the United States are the direct representatives of the Spokane, Portland and Seattle Railway Co., Oregon Trunk Railway and Oregon Electric Railway Co.

