



Railroad Bridge Over Columbia River at Wishram, Washington on S. P. & S. Ry.
With Mt. Hood in Background



NOVEMBER 1, 1957
Subject to change without notice



The Northwest's Own Railway

THROUGH SERVICE

VIA

NORTH COAST
LIMITED

EMPIRE
BUILDER



TIME TABLES

Pacific Standard Time

TRAVEL THE
COLUMBIA RIVER
SCENIC ROUTE
THROUGH THE
CASCADE RANGE

NOVEMBER 1, 1957
Subject to change without notice



The Northwest's Own Railway

THROUGH SERVICE

VIA

NORTH COAST
LIMITED

EMPIRE
BUILDER



TIME TABLES

Pacific Standard Time

TRAVEL THE
COLUMBIA RIVER
SCENIC ROUTE
THROUGH THE
CASCADE RANGE



SPOKANE, PORTLAND AND SEATTLE RAILWAY SYSTEM

S. P. & S. RY.—OREGON TRUNK RY.—OREGON ELECTRIC RY.—(Subsidiaries of Northern Pacific and Great Northern Railways)

TRANSCONTINENTAL TRAIN SERVICE—BETWEEN PORTLAND, PASCO AND EAST

SPOKANE, PORTLAND AND SEATTLE, NORTHERN PACIFIC AND CHICAGO, BURLINGTON AND QUINCY RAILWAYS

West Bound, Read Down				Eastbound, Read Up			
Daily C. B. & Q. No. 31	Daily The Main-streeter C. B. & Q. No. 47	Daily North Coast Ltd. No. 25	Chicago, Burlington and Quincy Railway (Central Time)	Mil. f'm P'tt	Daily North Coast Ltd. No. 26	Daily The Main-streeter C. B. & Q. No. 48	Daily C. B. & Q. No. 22
2.00	11.00	12.10	Lv Chicago (Union Station).....Ar	2327	1.45	7.55	2.45
b2.36	11.41	b12.47	Lv Aurora.....Ar	2289	12.59	7.06	2.07
4.19	1.59	2.24	Lv Savanna.....Ar	2182	11.19	4.53	12.32
6.22	4.35	4.36	" LaCrosse.....Ar	2030	9.04	2.14	10.21
8.45	7.20	6.55	Ar St. Paul (Union Station).....Lv	1900	7.00	11.45	8.25
N.P. 3							
9.30	8.40	7.15	Northern Pacific Railway		N.P. 2	7.25	9.55
10.15	9.15	7.45	Lv St. Paul (Union Station).....Ar	1900	6.40	10.15	7.25
			Lv Minneapolis (Hen. Av. Stn.)Ar	1890	6.10	9.42	6.50
The Mainstreeter							
6.05	7.25	6.05	Lv Duluth.....Ar	1881	7.30	10.55	7.30
6.16	7.39	6.16	" Superior.....Ar	1877	7.14	10.34	7.14
Vista-Dome North Coast Limited							
1.35	11.51	9.56	Lv Staples.....Ar	1733	3.44	6.55	3.25
5.50	2.30	11.55	" Fargo.....Ar	1622	1.42	4.15	10.50
8.55	4.27	1.30	" Jamestown.....Ar	1530	12.03	2.20	7.50
11.48	6.30	3.10	" Bismarck.....Ar	1428	10.20	12.33	5.00
11.30	5.57	2.30	" Mandan. (Mountain Time).....Ar	1423	9.04	11.13	3.20
2.25	8.10	4.15	" Dickinson.....Ar	1322	7.16	9.06	12.31
5.05	10.43	6.12	" Glendive.....Ar	1217	5.14	6.36	9.45
	12.35	7.32	" Miles City.....Ar	1138	3.48	4.51	
	1.45	8.32	" Forsyth.....Ar	1093	2.56	3.42	
	4.23	10.25	Lv Billings.....Ar	991	1.06	1.48	
The Mainstreeter							
	9.00	2.30	Lv Gardiner (Yel. Nat'l Park).....Ar	929	2.30	9.05	
Vista-Dome North Coast Limited							
	7.25	12.33	Lv Livingston.....Ar	875	10.56	10.43	
	8.27	1.19	" Bozeman.....Ar	851	10.16	9.45	
	11.10	3.49	" Butte.....Ar	756	7.40	6.25	
	11.15	3.20	" Helena.....Ar	753	7.35	6.45	
	1.40	4.50	" Garrison.....Ar	704	6.29	4.45	
	3.35	6.15	" Missoula.....Ar	636	5.08	2.55	
	4.40	7.10	" Paradise. (Pacific Time).....Ar	565	2.17	11.56	2.15
	6.58		" Sandpoint.....Ar	446		9.40	10.35
	9.25		" Athol.....Ar	418		9.03	9.40
	10.35	10.45	Ar Spokane (N.P. Station).....Lv	378	10.45	8.18	8.30
N.P. 6							
7.25	8.50	10.53	Lv Spokane (N.P. Station).....Ar	378	10.38	7.58	6.50
10.35	12.01	1.33	Ar Pasco.....Lv	231	7.50	4.50	3.35
S.P. & S. No. 5							
2.50	1.05	2.55	Lv Pasco.....Ar	231	7.10	2.15	2.00
5.25	3.25	5.00	Ar Wishram.....Lv	106	5.05	12.05	11.25
7.50	5.30	6.50	" Vancouver.....Ar	10	3.23	10.10	8.55
8.20	*6.00	7.15	Ar Portland. (Union Station).....Lv	0	3.00	9.45	8.30

3-21-43		29	C.B. & Q. Connections at Billings for Denver & Mo. River Points		30	42-20-12
8.45			Lv St. Louis. (Wab.).....Ar			9.45
4.00			Lv Kansas City. (CB & Q).....Ar			1.10
5.28			Lv St. Joseph.....Ar			11.35
10.20			Lv Omaha.....Ar			8.30
12.25			Lv Lincoln.....Ar			7.00
7.15			Ar Billings.....Lv			11.00
		9.40	Lv Denver.....Ar		7.15	
		5.20	Ar Billings.....Lv		1.15	

a—Stops to let off or pick up revenue passengers from or to Missoula and east or Pasco and west where scheduled to stop.
 b—Stops to receive revenue passengers for all scheduled stops.
 c—Stops to discharge revenue passengers from west of Minneapolis.
 *Passengers may remain in sleeping cars at Portland until 7:30 A.M.
 ① Arrive ② Leave Glendive daily except Sunday.
 ③ Leave St. Paul daily except Saturday.

EQUIPMENT

VISTA-DOME NORTH COAST LIMITED BETWEEN CHICAGO AND PORTLAND

All Lightweight Equipment
S. P. & S. 1-2, N. P. 25-26, C. B. & Q. 25-26

STANDARD SLEEPER-CLUB-LOUNGE CAR—With 6 roomettes, 3 double bedrooms. Between Pasco and Portland. (Car 10 westbound, Car 20 eastbound.)

OBSERVATION LOUNGE-SLEEPING CAR—Between Chicago and Pasco. Four double bedrooms, 1 compartment, spacious lounge, radio, library, writing desk. Buffet service. (259 westbound, 269 eastbound.)

VISTA-DOME SLEEPING CAR—Between Chicago and Portland. Newest type all-room car. 4 Roomettes, 4 Duplex Single Rooms and 4 Double Bedrooms. (258 westbound, 268 eastbound.)

STANDARD SLEEPING CAR—Between Chicago and Portland. Newest type all-room car. 3 double bedrooms, 1 compartment, 6 roomettes, 8 duplex roomettes. (257 westbound, 267 eastbound.)

VISTA-DOME COACH—Between Chicago and Portland. Chaise lounge "sleepy hollow" seats with leg rests for reclining full length. (C252 westbound, C262 eastbound). Seats reserved in advance. No extra charge.

LEWIS & CLARK TRAVELLER'S REST BUFFET-LOUNGE CAR—Between Chicago and Pasco. Select and a la carte meals, snacks and beverages, magazines, lounge section.

DINING CAR SERVICE—Between Chicago and Portland. Club breakfasts, \$1.45 to \$2.10; Table d'hote dinner, \$3.15; Table d'hote luncheon, \$2.35. Special plate luncheons and dinners, \$2.10. Also a la carte service.

STEWARDESS NURSE SERVICE—A Stewardess, who is also a registered nurse, is a member of the train personnel between Chicago and Pasco.

TICKETS—All classes of regular and reduced rate rail tickets will be honored for passage on the North Coast Limited.

THE MAINSTREETER

BETWEEN CHICAGO AND PORTLAND

S. P. & S. 3-4, N. P. 1-2, C. B. & Q. 47-48

OBSERVATION LOUNGE-BUFFET CAR—Between Spokane and Portland. Contains 8 Sections. (Car 30 westbound, car 40 eastbound.)

HOLIDAY LOUNGE—Between St. Paul and Pasco—Parlor-Lounge car; lounge section open to all passengers. (Car 104 westbound, car 204 eastbound.)

STANDARD SLEEPING CARS—Between Chicago and Spokane 8 Duplex Roomettes, 3 Double Bedrooms, 1 Compartment and 6 Roomettes. (105 westbound, 205 eastbound.) Through passengers will make station taxicab transfer at Spokane at no additional cost.

DINING CAR SERVICE—Between St. Paul and Pasco.

DELUXE RECLINING SEAT COACHES—Between Chicago and Pasco. Between St. Paul and Portland.

S. P. & S. No. 5-6, (Diesel Power), N. P. No. 5-6

COLUMBIA RIVER EXPRESS

BETWEEN SPOKANE, PASCO AND PORTLAND

Deluxe reclining chair car, Pasco-Portland.
Cafe car and deluxe coaches, Spokane and Pasco.

SPOKANE, PORTLAND AND SEATTLE RAILWAY SYSTEM

S. P. & S. RY.—OREGON TRUNK RY.—OREGON ELECTRIC RY.—(Subsidiaries of Northern Pacific and Great Northern Railways)



TRANSCONTINENTAL TRAIN SERVICE—BETWEEN PORTLAND, SPOKANE AND EAST

VIA CHICAGO, BURLINGTON & QUINCY AND GREAT NORTHERN SPOKANE, PORTLAND AND SEATTLE RAILWAYS

Westbound, Read Down				Eastbound, Read Up			
Daily Western Star No. 47	Daily Empire Builder No. 31	Chicago, Burlington and Quincy Railway (Central Time)	Miles from Portland	Daily Empire Builder No. 32	Daily Western Star No. 48		
11.00	2.00	Lv Chicago (Un. Stn.).....Ar	2260	2.00	7.55		
11.41	2.36	" Aurora.....Ar	2222	1.18	7.06		
1.59	4.10	" Savanna.....Ar	2115	11.39	4.53		
4.35	6.22	" LaCrosse.....Ar	1963	9.21	2.14		
7.20	8.45	Ar St. Paul (Un. Stn.).....Lv	1833	7.15	11.45		
Great Northern Ry.							
C'ch's only No. 27	No. 3				No. 4	C'ch's only No. 28	
9.30	8.15	Lv St. Paul (Un. Stn.).....Ar	1833	7.00	10.40	9.55	
10.03	8.45	" Minneapolis (GN Stn.).....Ar	1822	6.25	10.10	9.20	
11.45		Lv Willmar.....Ar	1731	4.40		7.25	
1.50		" Breckenridge.....Ar	1618	2.42		5.06	
	10.05	" St. Cloud.....Ar			8.45		
	12.19	" Fergus Falls.....Ar			6.28		
2.55	1.39	" Fargo.....Ar	1671	1.23	5.07	3.53	
	3.15	" Grand Forks.....Ar	1493		3.35		
	5.13	" New Rockford.....Ar	1447	11.02		1.46	
6.55	7.15	Ar Minot.....Lv	1338	9.02	11.50	11.59	
	10.05	Lv Williston (Central Time).....Lv	1218	6.50	9.15		
	9.20	Lv Williston (Mountain ").....Ar	1218	5.40	8.05		
	12.30	" Glasgow.....Ar	1062	2.45	4.50		
	3.50	" Havre.....Ar	909	11.50	1.35		
	6.50	Ar Great Falls.....Lv	903	8.50	10.25		
	7.15	Lv Great Falls.....Ar	903		10.00		
Streamlined Western Star							
9.55	2.15	Lv Shelby.....Ar	804	10.03	7.15		
10.30	2.48	" Cut Bank.....Ar	780	9.35	6.40		
11.35		" Glacier Park.....Ar	733		5.39		
1.20		" Belton.....Ar	675		3.53		
1.47		" Columbia Falls.....Ar	661		3.28		
Streamlined Empire Builder							
2.10	5.40	Lv Kalispell.....Ar	676	7.00	3.40		
5.01	6.00	Lv Whitefish.....Ar	653	6.25	3.05		
5.30	8.50	" Libby.....Ar	537		12.15		
4.35	7.50	Ar Troy (Mountain Time).....Lv	519	3.30	11.45		
5.27		Lv Troy (Pacific Time).....Ar	519	2.30	10.40		
6.08		" Bonner's Ferry.....Ar	488		9.53		
8.00	11.20	Lv Sandpoint.....Ar	454		9.03		
		Ar Spokane (GN Stn.).....Lv	379	11.05	7.10		
Spokane, Portland and Seattle Railway							
9.45	11.59	Lv Spokane. (GN Stn.).....Ar	379	10.25	6.10		
1.05	2.55	" Pasco.....Lv	231	7.25	2.45		
3.25	5.00	Ar Wishram.....Lv	106	5.05	12.05		
5.30	6.50	" Vancouver.....Ar	10	3.23	10.10		
*6.00	7.15	Ar Portland (Un. Stn.).....Lv	0	3.00	9.45		

THE STREAMLINED WESTERN STAR (Lightweight Streamlined Equipment)

CHICAGO-PORTLAND NO EXTRA FARE

CB&Q 47-48, GN 3-4, SP&S 3-4

ALL CLASSES OF TICKETS HONORED

Observation-Lounge-Buffet Car between Spokane and Portland—contains 8 Sections (Car 30 Westbound, Car 40 Eastbound).
Standard Sleeping Cars offering modern Pullman accommodations between Chicago and Portland, one car containing 4 Sections, 8 Duplex Roomettes and 4 Double Bedrooms. Double Bedrooms are connecting and may be sold en suite (32 Westbound, 42 Eastbound).
Streamlined Day-Nite Coaches between Chicago and Spokane. Deluxe coaches between Spokane and Portland. (Seats reserved June 11 to Sept. 9 only).
Buffet Service between Spokane and Portland.
Dining Car Service between St. Paul and Spokane. Traditional famous Great Northern meals. Club breakfasts, plate luncheons, table d'hote luncheons, plate dinners, table d'hote dinners. Also a la carte service for all meals.
Lounge-Observation Car between Chicago, St. Paul and Spokane.

*Passengers may remain in sleeping cars at Portland until 7:30 A. M. ①Stops to receive revenue passengers for all scheduled stops. ②Stops to discharge revenue passengers from west of Minneapolis. c—No. 31 stops at Glasgow to discharge revenue passengers from Minot and East and to receive revenue passengers for Spokane and West where No. 1 is scheduled to stop. d—No. 32 stops at Glasgow to discharge revenue passengers from Spokane and West and to receive revenue passengers for Minot and East where No. 2 is scheduled to stop. e—No. 31 stops at Cut Bank to discharge revenue passengers from Williston and east and to receive revenue passengers for scheduled stops Spokane and West. g—No. 32 stops at Cut Bank to discharge revenue passengers from Spokane and West and to receive revenue passengers for scheduled stops Williston and East. ④ Bus service, rail tickets honored.



SPOKANE, PORTLAND AND SEATTLE RAILWAY SYSTEM

S. P. & S. RY. - OREGON TRUNK RY. - OREGON ELECTRIC RY. - (Subsidiaries of Northern Pacific and Great Northern Railways)

PORTLAND - WISHRAM - PASCO - SPOKANE TRAINS

Westbound, Read Down				Eastbound, Read Up								
SPS No. 3 Daily	NP 1 SPS 3 Daily	NP 5 SPS 5 Daily	NP No. 25 SPS No. 1 Daily	SPS No. 1 Daily	Elev. va.	Spokane, Portland and Seattle Railway	Miles from Portland	SPS 6 NP 6 Daily	SPS No. 2 Daily	SPS 4 NP 2 Daily	SPS No. 4 Daily	SPECIAL STOPS No's 1 & 2 Stops only as shown
9.45	8.50	7.25	10.53	*11.59	1871	Lv. Spokane (business capital of... t	379.5	10.25	10.38	7.58	6.10	No. 3. At any station to discharge revenue passengers from east of Spokane.
10.24	N.P. Ry. No. 1	N.P. Ry. No. 5	Vista-Dome	Stream-lined	1920	Lv. Great No. Station Inland Empire) Ar	377.5	6.50	7.58	5.22	5.04	At any station east of Pasco to receive revenue passengers for Vancouver and Portland.
10.40	Spokane to Pasco Provisional Stops at Cheney Sprague Ritzville Lind Connell	Spokane to Pasco Stopping at Cheney Sprague Ritzville Lind Connell	North Coast Limited	Empire Builder	2090	Lv. South Cheney. (Vast plateau of Amber. Eastern Wash. Rodna Lamont (West edge great Palouse Rockwell grain district). Macall Bengo Hooper Washtucna Sperry Kahlottus Spectacular Devil's Farrington Snake River Ridd. Snake River Canyon. Levey Ice Harbor Dam. PASCO. t Lv	349.5 343.3 334.7 329.9 329.9 311.1 299.9 285.3 277.8 268.6 256.3 250.5 244.8 231.3	7.10	7.10	4.50	2.45	At any station west of Pasco to discharge revenue passengers from Spokane.
11.04	Spokane to Pasco Provisional Stops at Cheney Sprague Ritzville Lind Connell	Spokane to Pasco Stopping at Cheney Sprague Ritzville Lind Connell	North Coast Limited	Empire Builder	1706	Lv. Snake River	231.3	2.00	7.10	2.15	2.15	At any station west of Pasco to receive revenue passengers from Spokane.
11.27	Spokane to Pasco Provisional Stops at Cheney Sprague Ritzville Lind Connell	Spokane to Pasco Stopping at Cheney Sprague Ritzville Lind Connell	North Coast Limited	Empire Builder	1468	Lv. PASCO. t Lv	231.3	2.00	7.10	2.15	2.15	At any station east of Pasco to discharge revenue passengers from Portland or Vancouver.
11.42	Spokane to Pasco Provisional Stops at Cheney Sprague Ritzville Lind Connell	Spokane to Pasco Stopping at Cheney Sprague Ritzville Lind Connell	North Coast Limited	Empire Builder	1246	Lv. Kennewick (Columbia River Crossing). Finley Yellepit (Named after Indian Chief. Berrian met by Lewis & Clark 1805-6) No. McNary (McNary Dam). Plymouth (Opp. Old Oregon Trail). Paterson Whitecomb Alderdale McCredie Roosevelt Sundale Goodnoe Cliffs (Mt. Hood, 11,225 ft. visible) Maryhill WISHRAM (Mt. Hood visible) t Lv	231.3 228.5 223.9 215.8 208.3 195.2 192.0 179.8 170.4 162.2 157.6 146.7 140.8 130.8 119.7 114.0 106.1	7.10	7.10	2.15	2.15	Stops to receive passengers made only upon advance arrangements through Agent. Stops to discharge passengers made upon application to conductor.
12.12	Spokane to Pasco Provisional Stops at Cheney Sprague Ritzville Lind Connell	Spokane to Pasco Stopping at Cheney Sprague Ritzville Lind Connell	North Coast Limited	Empire Builder	964	Lv. WISHRAM (Celilo Falls) t Ar	106.1	11.15	5.03	5.03	11.57	11.57
12.50	Spokane to Pasco Provisional Stops at Cheney Sprague Ritzville Lind Connell	Spokane to Pasco Stopping at Cheney Sprague Ritzville Lind Connell	North Coast Limited	Empire Builder	888	Lv. Avery Northdales (The Dalles Dam) LYLE (Memalosee Indian burying). Bingen-White Salmon (Mt. Hood). Underwood (Apple country). Hood (Mt. Hood, 11,225 ft. visible). Cooks (Mitchell Point to south). Carson Stevenson (Cascades of Columbia). North Bonneville (Bonneville Dam). Skamania (Beacon Rock, alt. 840 ft.). Prindle (Columbia River). Clark Mount Pleasant (Mt. Hood, 11,225 ft.). Washougal (Large woolen mills). Camas (Large paper and pulp mills). Fisher 1805-6 VANCOUVER (founded 1825) t Lv	106.1 103.2 93.3 85.3 75.9 72.5 70.9 65.8 57.7 54.3 49.3 42.1 37.8 32.0 28.0 23.8 19.8 10.0	7.10	7.10	2.15	2.15	References: b Will stop on signal to receive revenue passengers for Vancouver and Portland. g Stops to discharge revenue passengers from Portland and Vancouver. m Stops to receive or discharge revenue passengers to or from Pasco and East. n to dispatch U. S. mail. * Passengers may remain in sleeping cars at Portland until 7:30 A. M. * Sleeping car ready for occupancy at 9:30 P. M. • Stops to entrain or de-train revenue passengers to or from points East of Spokane provided advance arrangements are made through agent. t Telegraph stations.
1.05	Spokane to Pasco Provisional Stops at Cheney Sprague Ritzville Lind Connell	Spokane to Pasco Stopping at Cheney Sprague Ritzville Lind Connell	North Coast Limited	Empire Builder	888	Lv. VANCOUVER. t Lv	10.0	8.51	3.20	3.20	10.04	10.04
2.50	Spokane to Pasco Provisional Stops at Cheney Sprague Ritzville Lind Connell	Spokane to Pasco Stopping at Cheney Sprague Ritzville Lind Connell	North Coast Limited	Empire Builder	888	Lv. VANCOUVER. t Lv	10.0	8.51	3.20	3.20	10.04	10.04
2.55	Spokane to Pasco Provisional Stops at Cheney Sprague Ritzville Lind Connell	Spokane to Pasco Stopping at Cheney Sprague Ritzville Lind Connell	North Coast Limited	Empire Builder	888	Lv. VANCOUVER. t Lv	10.0	8.51	3.20	3.20	10.04	10.04
3.03	Spokane to Pasco Provisional Stops at Cheney Sprague Ritzville Lind Connell	Spokane to Pasco Stopping at Cheney Sprague Ritzville Lind Connell	North Coast Limited	Empire Builder	888	Lv. VANCOUVER. t Lv	10.0	8.51	3.20	3.20	10.04	10.04
3.12	Spokane to Pasco Provisional Stops at Cheney Sprague Ritzville Lind Connell	Spokane to Pasco Stopping at Cheney Sprague Ritzville Lind Connell	North Coast Limited	Empire Builder	888	Lv. VANCOUVER. t Lv	10.0	8.51	3.20	3.20	10.04	10.04
3.25	Spokane to Pasco Provisional Stops at Cheney Sprague Ritzville Lind Connell	Spokane to Pasco Stopping at Cheney Sprague Ritzville Lind Connell	North Coast Limited	Empire Builder	888	Lv. VANCOUVER. t Lv	10.0	8.51	3.20	3.20	10.04	10.04
3.33	Spokane to Pasco Provisional Stops at Cheney Sprague Ritzville Lind Connell	Spokane to Pasco Stopping at Cheney Sprague Ritzville Lind Connell	North Coast Limited	Empire Builder	888	Lv. VANCOUVER. t Lv	10.0	8.51	3.20	3.20	10.04	10.04
3.38	Spokane to Pasco Provisional Stops at Cheney Sprague Ritzville Lind Connell	Spokane to Pasco Stopping at Cheney Sprague Ritzville Lind Connell	North Coast Limited	Empire Builder	888	Lv. VANCOUVER. t Lv	10.0	8.51	3.20	3.20	10.04	10.04
3.52	Spokane to Pasco Provisional Stops at Cheney Sprague Ritzville Lind Connell	Spokane to Pasco Stopping at Cheney Sprague Ritzville Lind Connell	North Coast Limited	Empire Builder	888	Lv. VANCOUVER. t Lv	10.0	8.51	3.20	3.20	10.04	10.04
4.02	Spokane to Pasco Provisional Stops at Cheney Sprague Ritzville Lind Connell	Spokane to Pasco Stopping at Cheney Sprague Ritzville Lind Connell	North Coast Limited	Empire Builder	888	Lv. VANCOUVER. t Lv	10.0	8.51	3.20	3.20	10.04	10.04
4.12	Spokane to Pasco Provisional Stops at Cheney Sprague Ritzville Lind Connell	Spokane to Pasco Stopping at Cheney Sprague Ritzville Lind Connell	North Coast Limited	Empire Builder	888	Lv. VANCOUVER. t Lv	10.0	8.51	3.20	3.20	10.04	10.04
4.30	Spokane to Pasco Provisional Stops at Cheney Sprague Ritzville Lind Connell	Spokane to Pasco Stopping at Cheney Sprague Ritzville Lind Connell	North Coast Limited	Empire Builder	888	Lv. VANCOUVER. t Lv	10.0	8.51	3.20	3.20	10.04	10.04
4.37	Spokane to Pasco Provisional Stops at Cheney Sprague Ritzville Lind Connell	Spokane to Pasco Stopping at Cheney Sprague Ritzville Lind Connell	North Coast Limited	Empire Builder	888	Lv. VANCOUVER. t Lv	10.0	8.51	3.20	3.20	10.04	10.04
4.49	Spokane to Pasco Provisional Stops at Cheney Sprague Ritzville Lind Connell	Spokane to Pasco Stopping at Cheney Sprague Ritzville Lind Connell	North Coast Limited	Empire Builder	888	Lv. VANCOUVER. t Lv	10.0	8.51	3.20	3.20	10.04	10.04
5.02	Spokane to Pasco Provisional Stops at Cheney Sprague Ritzville Lind Connell	Spokane to Pasco Stopping at Cheney Sprague Ritzville Lind Connell	North Coast Limited	Empire Builder	888	Lv. VANCOUVER. t Lv	10.0	8.51	3.20	3.20	10.04	10.04
5.14	Spokane to Pasco Provisional Stops at Cheney Sprague Ritzville Lind Connell	Spokane to Pasco Stopping at Cheney Sprague Ritzville Lind Connell	North Coast Limited	Empire Builder	888	Lv. VANCOUVER. t Lv	10.0	8.51	3.20	3.20	10.04	10.04
5.25	Spokane to Pasco Provisional Stops at Cheney Sprague Ritzville Lind Connell	Spokane to Pasco Stopping at Cheney Sprague Ritzville Lind Connell	North Coast Limited	Empire Builder	888	Lv. VANCOUVER. t Lv	10.0	8.51	3.20	3.20	10.04	10.04
5.35	Spokane to Pasco Provisional Stops at Cheney Sprague Ritzville Lind Connell	Spokane to Pasco Stopping at Cheney Sprague Ritzville Lind Connell	North Coast Limited	Empire Builder	888	Lv. VANCOUVER. t Lv	10.0	8.51	3.20	3.20	10.04	10.04
5.39	Spokane to Pasco Provisional Stops at Cheney Sprague Ritzville Lind Connell	Spokane to Pasco Stopping at Cheney Sprague Ritzville Lind Connell	North Coast Limited	Empire Builder	888	Lv. VANCOUVER. t Lv	10.0	8.51	3.20	3.20	10.04	10.04
5.51	Spokane to Pasco Provisional Stops at Cheney Sprague Ritzville Lind Connell	Spokane to Pasco Stopping at Cheney Sprague Ritzville Lind Connell	North Coast Limited	Empire Builder	888	Lv. VANCOUVER. t Lv	10.0	8.51	3.20	3.20	10.04	10.04
6.02	Spokane to Pasco Provisional Stops at Cheney Sprague Ritzville Lind Connell	Spokane to Pasco Stopping at Cheney Sprague Ritzville Lind Connell	North Coast Limited	Empire Builder	888	Lv. VANCOUVER. t Lv	10.0	8.51	3.20	3.20	10.04	10.04
6.17	Spokane to Pasco Provisional Stops at Cheney Sprague Ritzville Lind Connell	Spokane to Pasco Stopping at Cheney Sprague Ritzville Lind Connell	North Coast Limited	Empire Builder	888	Lv. VANCOUVER. t Lv	10.0	8.51	3.20	3.20	10.04	10.04
6.22	Spokane to Pasco Provisional Stops at Cheney Sprague Ritzville Lind Connell	Spokane to Pasco Stopping at Cheney Sprague Ritzville Lind Connell	North Coast Limited	Empire Builder	888	Lv. VANCOUVER. t Lv	10.0	8.51	3.20	3.20	10.04	10.04
6.24	Spokane to Pasco Provisional Stops at Cheney Sprague Ritzville Lind Connell	Spokane to Pasco Stopping at Cheney Sprague Ritzville Lind Connell	North Coast Limited	Empire Builder	888	Lv. VANCOUVER. t Lv	10.0	8.51	3.20	3.20	10.04	10.04
6.31	Spokane to Pasco Provisional Stops at Cheney Sprague Ritzville Lind Connell	Spokane to Pasco Stopping at Cheney Sprague Ritzville Lind Connell	North Coast Limited	Empire Builder	888	Lv. VANCOUVER. t Lv	10.0	8.51	3.20	3.20	10.04	10.04
6.42	Spokane to Pasco Provisional Stops at Cheney Sprague Ritzville Lind Connell	Spokane to Pasco Stopping at Cheney Sprague Ritzville Lind Connell	North Coast Limited	Empire Builder	888	Lv. VANCOUVER. t Lv	10.0	8.51	3.20	3.20	10.04	10.04
6.48	Spokane to Pasco Provisional Stops at Cheney Sprague Ritzville Lind Connell	Spokane to Pasco Stopping at Cheney Sprague Ritzville Lind Connell	North Coast Limited	Empire Builder	888	Lv. VANCOUVER. t Lv	10.0	8.51	3.20	3.20	10.04	10.04
6.55	Spokane to Pasco Provisional Stops at Cheney Sprague Ritzville Lind Connell	Spokane to Pasco Stopping at Cheney Sprague Ritzville Lind Connell	North Coast Limited	Empire Builder	888	Lv. VANCOUVER. t Lv	10.0	8.51	3.20	3.20	10.04	10.04
7.04	Spokane to Pasco Provisional Stops at Cheney Sprague Ritzville Lind Connell	Spokane to Pasco Stopping at Cheney Sprague Ritzville Lind Connell	North Coast Limited	Empire Builder	888	Lv. VANCOUVER. t Lv	10.0	8.51	3.20	3.20	10.04	10.04
7.09	Spokane to Pasco Provisional Stops at Cheney Sprague Ritzville Lind Connell	Spokane to Pasco Stopping at Cheney Sprague Ritzville Lind Connell	North Coast Limited	Empire Builder	888	Lv. VANCOUVER. t Lv	10.0	8.51	3.20	3.20	10.04	10.04
7.16	Spokane to Pasco Provisional Stops at Cheney Sprague Ritzville Lind Connell	Spokane to Pasco Stopping at Cheney Sprague Ritzville Lind Connell	North Coast Limited	Empire Builder	888	Lv. VANCOUVER. t Lv	10.0	8.51	3.20	3.20	10.04	10.04
7.22	Spokane to Pasco Provisional Stops at Cheney Sprague Ritzville Lind Connell	Spokane to Pasco Stopping at Cheney Sprague Ritzville Lind Connell	North Coast Limited	Empire Builder	888	Lv. VANCOUVER. t Lv	10.0	8.51	3.20	3.20	10.04	10.04
7.30	Spokane to Pasco Provisional Stops at Cheney Sprague Ritzville Lind Connell	Spokane to Pasco Stopping at Cheney Sprague Ritzville Lind Connell	North Coast Limited	Empire Builder	888	Lv. VANCOUVER. t Lv	10.0	8.51	3.20	3.20	10.04	10.04
7.35	Spokane to Pasco Provisional Stops at Cheney Sprague Ritzville Lind Connell	Spokane to Pasco Stopping at Cheney Sprague Ritzville Lind Connell	North Coast Limited	Empire Builder	888	Lv. VANCOUVER. t Lv	10.0	8.51	3.20	3.20	10.04	10.04
7.50	Spokane to Pasco Provisional Stops at Cheney Sprague Ritzville Lind Connell	Spokane to Pasco Stopping at Cheney Sprague Ritzville Lind Connell	North Coast Limited	Empire Builder	888	Lv. VANCOUVER. t Lv	10.0	8.51	3.20	3.20	10.04	10.04
8.00	Spokane to Pasco Provisional Stops at Cheney Sprague Ritzville Lind Connell	Spokane to Pasco Stopping at Cheney Sprague Ritzville Lind Connell	North Coast Limited	Empire Builder	888	Lv. VANCOUVER. t Lv	10.0	8.51	3.20	3.20	10.04	10.04
8.03	Spokane to Pasco Provisional Stops at Cheney Sprague Ritzville Lind Connell	Spokane to Pasco Stopping at Cheney Sprague Ritzville Lind Connell	North Coast Limited	Empire Builder	888	Lv. VANCOUVER. t Lv	10.0	8.51	3.20	3.20	10.04	10.04
8.20	Spokane to Pasco Provisional Stops at Cheney Sprague Ritzville Lind Connell	Spokane to Pasco Stopping at Cheney Sprague Ritzville Lind Connell	North Coast Limited	Empire Builder	888	Lv. VANCOUVER. t Lv	10.0	8.51	3.20	3.20	10.04	10.04

FOR THROUGH SERVICE AND CONSIST OF ALL TRAINS, SEE PRECEDING PAGES 2 and 3.

A TRANS-CONTINENTAL SYSTEM OF RAILWAYS THROUGH AMERICA'S WONDERLAND

Traversing the northern states between the Pacific Northwest and Chicago presents a veritable wonderland offering passengers a splendid variety of ever-changing scenery.

Over these lines, between Portland and Chicago, are operated four of America's famous trains, the Streamlined Empire Builder and the Streamlined Western Star,

via S.P.&S. Spokane, G.N. St. Paul, C.B.&Q. Chicago, and the Streamlined Vista Dome North Coast Limited and The Mainstreeter via S.P.&S. Pasco, N.P. St. Paul and C.B.&Q. Chicago where connections are made to all points east and south.

These trains provide passengers with every feature of modern railway travel for their comfort, and pleasure.

Light face figures denote A.M. time. Bold face figures denote P.M. time. Ar. Arrive. Lv. Leave. /Stop on Signal.

SPOKANE, PORTLAND AND SEATTLE RAILWAY SYSTEM

S. P. & S. RY. - OREGON TRUNK RY. - OREGON ELECTRIC RY. - (Subsidiaries of Northern Pacific and Great Northern Railways)

PORTLAND - REDMOND - BEND TRAINS

Read Down			Read Up		
No. 105 Sat. Only	No. 103 Daily Ex. Sat. & Sun.	Oregon Trunk Ry.	Miles from P't'd	No. 102 Daily Ex. Sun.	No. 4 Daily
3618	7.00	Lv Bend	257.6	7.00	
3572	7.11	Deschutes	250.3	6.35	
2983	7.30	Redmond	240.7	6.15	
2918	7.35	Prineville Jet.	238.4	5.50	
2863	7.40	Terrebonne	235.6	5.45	
2850	7.52	Opal City	227.7	5.31	
2624	8.02	Culver	221.1	5.18	
2517	8.12	Metolius	216.3	5.10	
2458	8.25	Madras	211.1	5.00	
2169	8.35	Paxton	205.9	4.34	
1787	8.51	Gateway	200.1	4.18	
1254	9.13	South Jet.	191.9	3.56	
	9.18	Axford	189.0	3.49	
1203	9.24	Kaskela	186.2	3.45	
1074	9.40	Hardy	179.7	3.31	
1012	9.50	Dant	173.6	3.19	
960	9.57	Nena	169.9	3.11	
852	10.20	Maupin	160.7	2.53	
788	10.28	Tuskan	156.9	2.45	
783	10.35	Sherar	153.4	2.39	
606	10.51	Oakbrook	145.8	2.23	
510	11.10	Sinamox	136.5	2.04	
508	11.18	Dike	132.5	1.55	
354	11.35	Lockit	124.4	1.38	
286	12.01	Moody	112.0	1.13	
166	12.15	Ar Wishram	106.1	1.00	

EQUIPMENT BETWEEN PORTLAND AND BEND
Trains Nos. 4-102 and 105-3. Coaches daily between Portland and Wishram and Daily except Sunday between Wishram and Bend. Observation Lounge Buffet cars daily between Portland and Wishram. See pages 2, 3 and 4.

RAIL TRAVEL CREDIT CARD PLAN

permits purchase of Rail and Pullman tickets from any S. P. & S. Ry. Co. agent on Credit by securing a Credit Card from the Rail Travel Credit Agency, Room 436 Union Station, Chicago, Ill.

"DRIVURSELF" RAIL-AUTO SERVICE

provides a new automobile at your destination or stop over point. Ask the agent for further details on any of the above plans.



You can **CHARGE TELEGRAMS** Anywhere

Simply write your message on a telegraph blank (available on all Trains) and include your own name and address. Give it to any of the Train's personnel for sending. The charges will be billed to you at home or business.

On any Occasion it's wise to wire **WESTERN UNION**

Light face figures denote A.M. time. Bold face figures denote P.M. time. Ar. Arrive. Lv. Leave. /Stop on Signal. t Telegraph Office.



FREIGHT SERVICE ONLY

is operated on the following Branches

S. P. & S. Railway

Miles	STATIONS
0	Goldendale Br.
10.3	Lyle
13.4	Pitt
16.9	Wahkiakus
30.2	Warwick
35.3	Centerville
41.6	Goldendale

KEASEY BRANCH



SPOKANE, PORTLAND AND SEATTLE RAILWAY SYSTEM

CONNECTIONS AT PORTLAND
S. P. & S. RY. - OREGON TRUNK RY. - OREGON ELECTRIC RY. - (Subsidiaries of Northern Pacific and Great Northern Railways)

PORTLAND - PUGET SOUND - BRITISH COLUMBIA

Northern Pacific Ry. - Great Northern Ry. - Union Pacific R. R.

Northbound-Read Down				Southbound-Read Up				
N. P.	G. N.	N. P.	U. P.	G. N.	N. P.	U. P.	N. P.	
401	469	407	457	460	408	458	402	
Daily	Daily	Daily	Daily	Daily	Daily	Daily	Daily	
11.45	1.30	5.30	9.00	Lv. Portland, Un. Sta. Ar	12.20	4.30	9.15	6.45
12.11	1.49	5.49	9.21	Lv. Vancouver, Wn. Ar	11.58	4.08	8.51	6.15
f 1.05				Ar. Kalama. Lv	f 11.25		f 5.18	
1.35	2.28	6.29	10.01	Ar. Kelso-Longview. Lv	11.14	3.24	8.04	5.00
1.55				Ar. Castle Rock. Lv	f 11.02		f 4.20	
3.00	3.12	7.11	10.43	Ar. Chehalis. Lv	10.29	2.39	7.18	3.25
3.10	3.23	7.21	10.53	Ar. Centralia. Lv	10.22	2.32	7.11	3.00
v 3.46	b 7.44	b 11.16	Ar. East Olympia. Lv	b 9.58	b 2.08	v 6.47	f 2.08	
5.00	4.31	8.29	12.01	Ar. Tacoma. Lv	9.16	1.26	6.02	1.15
k 6.45	k 6.30	k 9.30	u 1.00	Ar. Seattle. Lv	k 8.20	k 12.30	u 5.00	k 11.45

b To and from Olympia by bus k King Street Station
p Stops from Portland and beyond u Union Station
v No connecting bus service between East Olympia and Olympia.

SOUTHERN PACIFIC COMPANY

Southbound-Read Down Northbound-Read Up

19	11	9			12	20	10
10.15	4.45	7.45	Lv. Portland. Ar	8.15	7.55	11.25	
11.57	5.57	8.57	Ar. Salem. Lv	7.02	5.57	10.11	
12.42	6.28	9.28	Ar. Albany. Lv	6.34	5.15	9.43	
2.17	8.18	11.15	Ar. (a) Corvallis (a). Lv	9.10	6.29	10.18	
1.35	7.09	10.09	Ar. Eugene. Lv	5.55	4.10	9.04	
7.25	11.33	2.25	Ar. Klamath Falls. Lv	1.35	10.35	4.45	
1.30	4.07	6.36	Ar. Redding. Lv	9.16	4.7	12.14	
6.55	7.15	9.40	Ar. (a) Sacramento (a). Lv	5.50	8.35	9.00	
6.17	7.30	9.57	Ar. Martinez. Lv	5.41	9.35	8.45	
7.22	8.23	10.43	Ar. Oakland, 16th St. Lv	4.47	8.34	7.59	
7.35	8.35	10.55	Ar. Oakland Pier. Lv	4.38	8.25	7.50	
8.10	9.10	11.30	Ar. San Francisco. Lv	4.00	7.20	7.20	
10.40	7.00	10.50	Ar. Los Angeles. Lv	6.40		7.35	

a-via P G Lines Bus.

EQUIPMENT OF TRAINS

Trains 9-10, Shasta Daylight—Streamlined Air Conditioned Train-Radio Parlor Obs. Reclining Chair Cars between Portland and San Francisco. Coffee Shop service. All seats reserved.
Train 58 will take transfers from No. 9 at Martinez.
Train 57 will make transfer to No. 10 at Oakland Pier.
Train 11-12, Cascade—(Streamlined, Air Conditioned). Between Portland and San Francisco. Standard sleeping cars with drawing rooms, compartments, bedrooms, roomettes, lounge and dining car. Reserved seat chair car. (Telephone service on Trains 11-12.)
Train 19-20, Klamath—(Air Conditioned). Between Portland and San Francisco. Chair car only. No meal service.

CONNECTIONS AT SPOKANE AND PASCO

Bus Ex. Sun.	Bus Dly	Great Northern Ry.	Bus Dly	Bus Dly
2.20	9.20	Lv. Spokane. Ar	12.15	7.30
2.50	9.52	Ar. Deer Park. Lv	11.35	6.55
3.50	10.45	Chewelah. Lv	10.50	6.00
4.20	11.20	Colville. Lv	10.15	5.30
4.40	11.52	Kettle Falls. Lv	10.00	4.55
	12.43	Northport. Lv		4.10
	1.40	Ar. Trail, B.C. Lv		3.20
	4.25	Ar. Nelson. Lv		10.50

Great Northern Ry. Bend, Klamath Falls Bieber	SP&S 4	SP&S 2	SP&S 6	Northern Pacific Walla Walla	SP&S 3	SP&S 1	SP&S 5	
(Freight Service Only)	9.45	3.00	8.30	Lv. Portland. Ar	6.00	7.15	8.20	
	2.15	7.10	2.00	Ar. Pasco. Lv	1.05	2.55	2.50	
	8.10	7.50	3.55	Lv. Pasco. Ar		9.55	9.40	
	8.30	8.10	4.15	Lv. Wallula. Ar		9.28	9.15	
	9.15	8.50	5.00	Ar. Walla Walla. Lv		8.45	8.30	
Miles								
0	Bend.....							
15	Lava Jct.....							
32	La Pine.....							
52	Crescent.....							
68	Chemult.....							
110	Chiloquin.....	9.45	8.30	8.30	Lv. Portland. Ar	8.20	6.00	6.00
133	Algoma.....	2.15	2.00	2.00	Ar. Pasco. Lv	2.50	1.05	1.05
144	Klamath Falls.....	10.50	1.48	12.26	Lv. Pasco. Ar	4.25	3.20	7.35
159	Merrill.....	11.02		12.36	Ar. Kennewick. Lv	4.15	3.10	
210	Scarfaced.....	11.54		1.21	Ar. Prosser. Lv	3.25	2.25	
222	Lookout.....	12.34		1.58	Ar. Toppenish. Lv	2.49	1.50	
234	Bieber.....	1.05	3.37	2.25	Ar. Yakima. Lv	2.25	1.25	5.50
		2.13	4.37	3.47	Ar. Ellensburg. Lv	1.11	12.08	4.45

MARK YOUR BAGGAGE

All baggage, whether checked or carried with you, should be plainly marked with your name and permanent address. This will insure prompt recovery should it become lost or go astray. Remove all obsolete labels and addresses.
JEWELRY, CURRENCY, VALUABLE PAPERS and LIQUIDS should not be placed in baggage intended for checking. The railway will not assume responsibility for loss of, or damage to such articles.

4-311 Daily	NORTHERN PACIFIC	314-3 Daily
9.45	Lv. Portland. Ar	6.00
8.10	Ar. Spokane. Lv	9.10
8.45	Lv. Spokane. Ar	8.30
f 9.14	Ar. Spangle. Lv	f 8.02
f 9.35	Ar. Rosalia. Lv	f 7.41
f 9.51	Ar. Oakesdale. Lv	f 7.25
f 10.11	Ar. Garfield. Lv	f 7.05
10.31	Ar. Palouse. Lv	6.48
10.59	Ar. Pullman. Lv	6.22
11.18	Ar. Moscow. Lv	6.01
12.04	Ar. Kendrick. Lv	5.14
f 12.11	Ar. Juliaetta. Lv	f 5.07
12.45	Ar. Lewiston. Lv	4.30

SAN FRANCISCO - LOS ANGELES - COAST LINE									
90	76	98	M			75	91	99	
12.20	9.00	8.15	0	Lv. San Francisco. Ar	8.30	6.30	6.00		
1.50	10.11	9.06	47	Ar. San Jose. Lv	7.13	4.20	5.05		
9.07	3.08	1.23	245	Ar. San Luis Obispo. Lv	2.15	9.35	12.51		
12.50	5.48	3.41	367	Ar. Santa Barbara. Lv	11.34	5.45	10.30		
4.30	8.30	6.00	470	Ar. Los Angeles. Lv	9.00	1.00	8.15		

SAN FRANCISCO - LOS ANGELES - VALLEY LINE									
60	58	62	M			57	51	59	
	8.20	7.20	0	Lv. San Francisco. Ar	8.10	7.10			
	9.10	8.00	4	Lv. Oakland Pier. Ar	7.25	6.40			
	7.45			Lv. Sacramento. Ar			8.10		
12.01	2.40	12.39	205	Lv. Fresno. Lv	2.20	2.00	4.10		
2.21	5.07	2.50	313	Lv. Bakersfield. Lv	11.30	11.50	1.15		
7.35	10.40	7.55	482	Ar. Los Angeles. Lv	6.00	6.40	7.35		

UNION PACIFIC RAILROAD									
Read Down					Read Up				
18 Daily	106 Daily	12 Daily			17 Daily	105 Daily	11 Daily		
9.30	5.00	8.00	Lv. Portland. Ar	5.30	7.30	7.30			
10.54	6.18	9.39	Ar. Hood River. Lv	3.45	f 6.01	5.07			
11.50	6.50	10.10	Ar. The Dalles. Lv	3.10	5.30	4.35			
3.05	9.08	1.05	Ar. Pendleton. Lv	11.00	3.10	1.20			
7.00	12.10	4.36	Ar. Baker. Lv	7.02	11.55	9.39			
10.25		7.52	Ar. Payette. Lv	5.34		8.05			
10.35		8.05	Ar. Ontario. Lv	5.24		7.56			
11.35	4.06	8.55	Ar. Nampa. Lv	4.15	10.08	6.50			
12.10	4.30	9.35	Ar. Boise. Lv	3.35	9.40	6.10			
5.20	8.20	2.50	Ar. Pocatello. Lv	10.20	6.55	12.50			
8.45		6.20	Ar. Ogden. Ar	6.20		8.50			
10.05		8.20	Ar. Salt Lake. Lv	5.25		6.45			
	6.45	6.00	Ar. Cheyenne. Lv		7.45				
8.45		6.05	Ar. Denver. Lv	7.00					

SPOKANE, PORTLAND AND SEATTLE RAILWAY SYSTEM

S. P. & S. RY. - OREGON TRUNK RY. - OREGON ELECTRIC RY. - (Subsidiaries of Northern Pacific and Great Northern Railways)



Sleeping, Parlor Car and Reserved Seat Fares

BETWEEN	PORTLAND		SPOKANE		BETWEEN	PORTLAND		SPOKANE	
	Parlor Car Seat	Lower Berth Standard	Lower Berth Standard	Parlor Car Seat		Lower Berth Standard	Lower Berth Standard		
ANDr					AND				
Billings. Mont.			\$12.25	\$ 7.90	Minneapolis. Minn.		\$20.80	\$17.70	
Bingen-W. Salmon. Wn.				5.80	Missoula. Mont.		8.70	5.80	
Boston. Mass.			33.20	29.50	New Orleans. La.		29.05	26.80	
Bozeman. Mont.			11.00	6.70	New York. N.Y.		33.20	29.50	
Buffalo. N.Y.			29.50	26.00	Oakland. Calif.		9.50	14.05	
Butte. Mont.			9.95	5.80	Omaha. Neb.		20.80	17.70	
Camas. Wn.				5.80	Pasco. Wn.	2.35	5.80	5.80	
Chicago. Ill.			24.20	20.80	Philadelphia. Pa.		32.15	25.00	
Cincinnati. Ohio			26.80	23.15	Pittsburgh. Pa.		28.70	28.70	
Cleveland. Ohio			27.50	24.20	Portland. Ore.			5.80	
Denver. Colo.			17.00	15.90	St. Louis. Mo.		23.15	20.15	
Detroit. Mich.			26.80	23.15	St. Paul. Minn.		20.80	17.70	
Duluth. Minn.			20.80	17.70	Sacramento. Calif.		9.20	13.75	
Eugene. Ore.	1.35		5.80	7.05	San Francisco. Calif.		9.50	14.05	
Fargo. N.D.			18.85	14.70	Seattle. Wn.	1.00	5.80	5.80	
Gardiner. Mont.			11.75	7.55	Spokane. Wn.	2.95	5.80	5.80	
Glacier Park. Mont.			9.50	5.80	Stevenson. Wn.			5.80	
Great Falls. Mont.			11.75	7.05	Tacoma. Wn.	1.20	5.80	5.80	
Havre. Mont.			11.75	7.55	Vancouver. Wn.			5.80	
Helena. Mont.			9.95	5.80	Washington. D.C.		32.15	28.70	
Kansas City. Mo. (Via St. Paul, Minn.)			22.20	19.10	Wishram. Wn.	1.20		5.80	
Klamath Falls. Ore.	3.05		5.80	9.50					
Livingston. Mont.			11.45	7.05					
Los Angeles. Calif.			13.75	13.10					
Louisville. Ky.			26.80	23.15					
Lyle. Wn.				5.80					

1 Railroad Owned Cars.

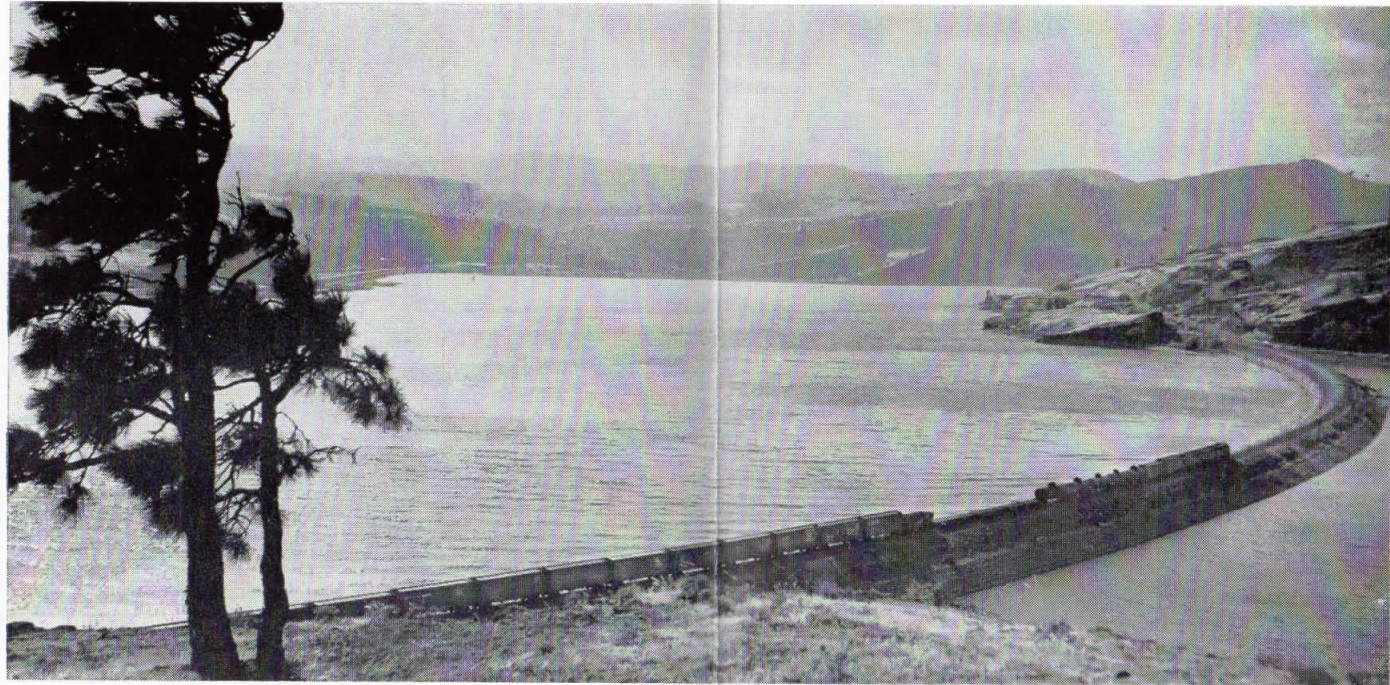
RATES FOR SLEEPING CAR ACCOMODATIONS

Where Standard Lower Berth Is	Upper Berth Is	Duplex Roomette Is	ROOMETTE		Duplex Single Room		BEDROOM		Bedroom Suite	Compartment		Drawing Room	
			For One Person	For Two Persons	For One Person	For Two Persons	For One Person	For Two or More Persons	For Two or More Persons	For One Person	For Two or More Persons	For One Person	For Two or More Persons
\$ 5.80	\$ 4.40	\$ 6.35	\$ 8.10	\$ 9.20	\$ 9.20	\$10.40	\$10.90	\$12.75	\$21.85	\$11.55	\$13.85	\$15.90	\$19.35
6.70	5.15	7.40	9.40	10.65	10.65	12.05	12.75	14.65	25.45	13.40	16.05	18.40	22.40
7.05	5.40	7.85	9.95	11.40	11.40	12.85	13.40	15.50	26.75	14.10	16.95	19.40	23.65
7.55	5.65	8.30	10.55	12.05	12.05	13.60	14.40	16.65	28.80	15.10	18.10	20.75	25.25
7.90	6.10	8.75	11.05	12.75	12.75	14.30	15.10	17.50	30.15	15.85	19.00	21.75	26.55
8.70	6.65	9.65	12.20	13.90	13.90	15.55	16.65	19.20	33.30	17.45	20.90	23.95	29.20
9.20	6.95	10.15	12.80	14.55	14.55	16.30	17.50	20.20	35.00	18.40	22.10	25.30	30.80
9.50	7.15	10.55	13.25	15.25	15.25	17.05	18.15	20.95	36.25	19.05	22.85	26.20	31.90
9.95	7.55	10.95	13.80	15.90	15.90	17.75	18.90	21.90	37.75	19.90	23.85	27.40	33.35
11.00	8.40	12.25	15.50	17.65	17.65	19.85	20.95	24.30	41.95	22.05	26.45	30.35	36.90
11.45	8.65	12.70	16.00	18.25	18.25	20.60	21.70	25.20	43.45	22.90	27.50	31.50	38.35
11.75	9.00	13.05	16.60	18.95	18.95	21.25	22.35	25.95	44.75	23.55	28.25	32.35	39.45
12.25	9.25	13.55	17.10	19.45	19.45	22.00	23.25	26.90	46.55	24.50	29.45	33.70	41.05
13.75	10.50	15.25	19.20	22.00	22.00	24.65	26.10	30.35	52.20	27.50	33.		

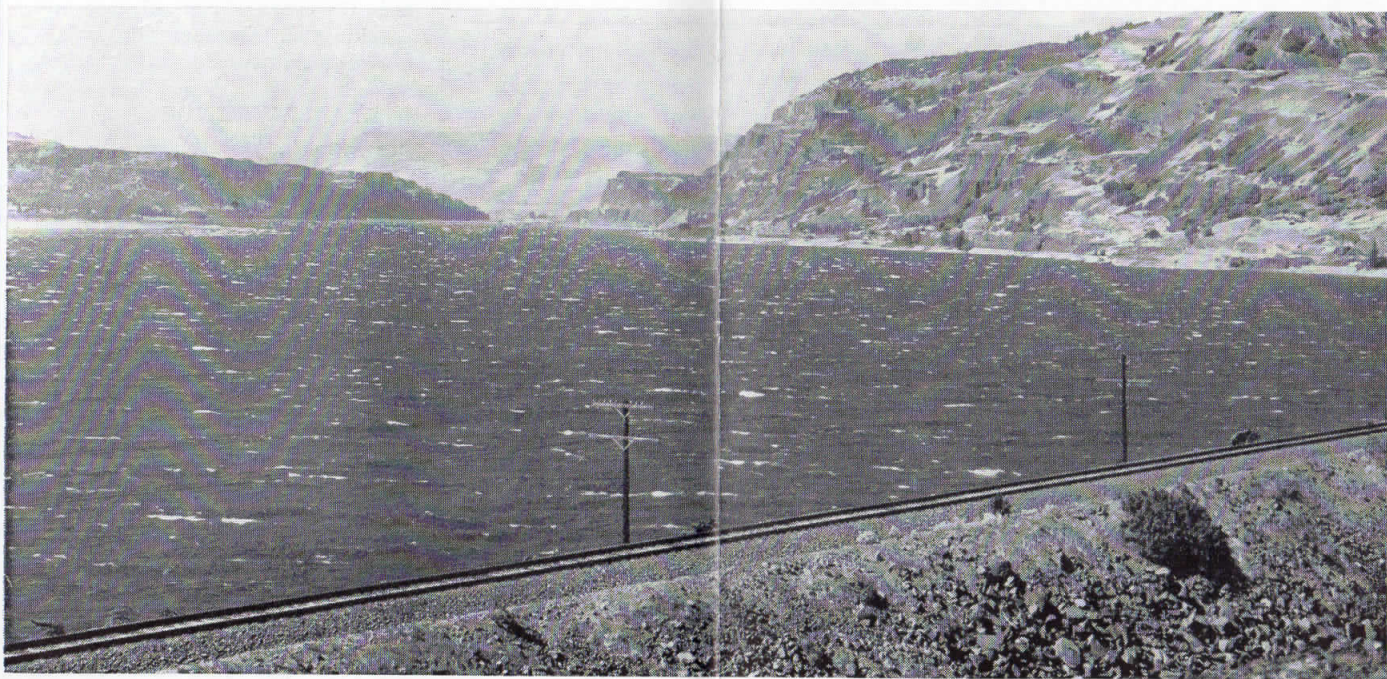


SPOKANE, PORTLAND AND SEATTLE RAILWAY SYSTEM

S. P. & S. RY. — OREGON TRUNK RY. — OREGON ELECTRIC RY. — (Subsidiaries of Northern Pacific and Great Northern Railways)



S. P. & S. Ry. Near Bingen-White Salmon, Washington



S. P. & S. Ry. Along The Columbia River Near Lyle, Washington



SPOKANE, PORTLAND AND SEATTLE RAILWAY SYSTEM

S. P. & S. RY. — OREGON TRUNK RY. — OREGON ELECTRIC RY. — (Subsidiaries of Northern Pacific and Great Northern Railways)



Oregon Trunk Ry. Near Moody, Oregon



Horseshoe curve near Sinamox on the Oregon Trunk Railway

Your Choice of... Three Daily Trains
Between PORTLAND and SPOKANE

See Page 4 For Detailed Schedules

EASY way
to ship anything

Just phone Railway Express.
Prompt pick-up and fast
delivery within established
vehicle limits.



... safe, swift, sure



SPOKANE, PORTLAND AND SEATTLE RAILWAY SYSTEM

S. P. & S. RY.—OREGON TRUNK RY.—OREGON ELECTRIC RY.—(Subsidiaries of Northern Pacific and Great Northern Railways)

GENERAL INFORMATION

NOTE—This folder has been compiled with care, but may contain errors. Furthermore, it is sometimes necessary to change schedules without notice, trains shown are sometimes unavoidably delayed and connections missed. We hope none of our patrons will be inconvenienced by any of these causes, but the Railway Company will not be liable therefor.

ADJUSTMENT OF FARES. In cases of dispute with conductors or agents, passengers should pay fare required, take receipt and communicate with Auditor Revenue Accounts, S. P. & S. Ry., Box 571, Portland 7, Ore.

REDEMPTION OF TICKETS. Wholly unused tickets will be redeemed by selling agent. Partly used tickets will be redeemed under tariff regulations on application to Auditor Revenue Accounts.

TICKET LIMITS. Tickets will be honored for continuous passage to destination when presented not later than 4:00 a.m. standard time of the day following date of expiration as punched or otherwise shown on ticket. One-way tickets will be honored for passage within 30 days, round-trip tickets 6 months, in addition to date of sale.

FEDERAL TAX. Fares quoted in this folder do not include 10% Federal tax.

STOPOVERS will be allowed at all regular scheduled stops within limits, on application to Conductor.

CHILDREN'S FARES. Children under five years of age, when accompanied by parent or guardian, will be carried free of charge. Children five years of age and under twelve years of age will be charged one-half of the adult fares. Children of five and under twelve years of age who are not mature enough to take care of themselves when traveling alone must not be ticketed unless accompanied by parent or guardian. Children twelve years of age and over will be charged the adult fare.

MARK YOUR BAGGAGE. All baggage should show name and permanent address of owner. Appropriate gummed labels may be secured from Ticket or Baggage Agent.

HAND BAGGAGE in Pullmans is restricted to what can be conveniently placed in berth or at seat occupied by passenger.

BAGGAGE MAXIMUMS. Ordinarily 150 lbs. is free allowance for each adult ticket. No single piece of baggage exceeding 300 pounds in weight, or 72 inches in greatest dimension, or exceeding \$2500.00 in value will be checked. Free allowances are subject to tariff stipulation as to contents, weight, value and size.

BAGGAGE INSURANCE. A charge of only twenty-five cents is made for each hundred dollars value declared above \$100 for baggage checked for each adult passenger and above \$50 for each half-fare ticket. The maximum baggage valuation which may be insured on a single ticket is \$2500.

LIMITED LIABILITY. Excess value of baggage must be declared and paid for at time of checking.

BICYCLES (not motorcycles), baby carriages, dogs and guns are carried in baggage cars subject to tariff regulations.

LOST ARTICLES should be inquired for at the Baggage Office, Union Station, Portland, Oregon, or S. P. & S. Station, Spokane, Wash.

RESPONSIBILITY. No responsibility is assumed for unchecked articles left in stations or cars.

GENERAL OFFICES

Amer. Bank Bldg., 621 S.W. Morrison St., Box 571, Portland 7, Oregon

R. S. MACFARLANE	President	St. Paul 1, Minn.
JOHN M. BUDD	Vice-President	St. Paul 1, Minn.
L. W. ALBERTSON	Vice-President	Portland, Oregon
N. S. WESTERGARD	General Manager	Portland, Oregon
GEO. F. EHLEN	Traffic Manager	Portland, Oregon
H. W. SHIELDS	Asst. Traffic Manager	Portland, Oregon
W. J. CROSSIE	General Passenger Agent	Portland, Oregon
E. H. BLOCK	General Freight Agent	Portland, Oregon
R. A. LAWRENCE	Gen. Industrial Agent	Portland, Oregon
A. H. STUCKERT	Asst. General Industrial Agent	Portland, Oregon
J. L. MONAHAN	Superintendent	Portland, Oregon
D. J. RITCHIE	Gen'l Supt. Motive Power	Vancouver, Wash.
H. F. MOY	Secretary and Chief Engineer	Portland, Oregon
T. L. PADDEN	Treasurer	Portland, Oregon
W. T. COWAN	Purchasing Agent	Portland, Oregon
C. E. BROEDER	Comptroller	Portland, Oregon
H. L. KENDALL	Auditor Disbursements	Portland, Oregon
F. G. BURGARD	Auditor Revenue Accounts	Portland, Oregon
L. F. LAWSON	Auditor Misc. Accounts	Portland, Oregon
G. C. GRAHAM	Auditor Machine Section	Portland, Oregon
W. J. SHEEHAN	Gen'l Claim Agent	Portland, Oregon
W. P. GARRETT	Right of Way and Tax Agent	Portland, Oregon
H. WENTZIEN	Superintendent Dining Cars	Portland, Oregon

Representatives

ALBANY, ORE.	J. P. MARION (Phone Wabash 61546 or 61547)	Ag't. O. E. Ry. Sta.
ASTORIA, ORE.	R. C. BAKER, 20th & Commercial (Phone 113)	Ag't.
BEND, ORE.	E. A. KOSKELA (Ev. 2-3911)	Ag't. Passenger Sta.
	G. A. SILKWORTH (Ev. 2-2901)	General Agent
EUGENE, ORE.	W. C. BODNO (Ph. DI 5-8757)	Ag't., O.E.Ry. Sta.
	W. Z. MYERS (Ph. Diamond 5-8759)	General Agent
	J. H. TAYLOR	Traveling Frt. & Pass. Agent
HILLSBORO, ORE.	F. I. RODDAN (Ph. 1944)	Ag't., O.E.Ry. Frt. Depot
JUNCTION CITY, ORE.	R. E. MILLER (Ph. M. 382)	Ag't., O.E.Ry. Frt. Dep.
LOS ANGELES 14, CALIF.	Great Northern Railway Room 317 510 West Sixth St., Ph. Madison 9-1473	
	E. M. BRADY	District Passenger Agent
Northern Pacific Railway	510 West Sixth St., Phone Trinity 2321	
	D. F. WALKER	General Agent
OAKLAND 12, CAL.	Great Northern Railway 807 Financial Center, Ph. Templebar 2-7672	
	C. G. ALEXANDER	District Passenger Agent
Northern Pacific Railway	611 First Western Bank Bldg. Ph. Glencourt 1-8717	
PORTLAND 7, ORE.	SPENCER A. JEWELL	General Agent
	M. L. THOMSON	GAPD (SP&S-NP. Rys.) 439 S.W. 6th Ave., Telephone Capitol 2-1311
	A. W. GUSEY	GAPD (SP&S-GN. Rys.) 607 S.W. Washington St., Telephone CA 3-7273
	F. M. SMITH	Ticket Ag't., Union Station, Foot of N.W. 6th Ave., Telephone Capitol 7-3421
	H. K. HALLGREN	District Passenger Agent
	H. F. ERZ	General Agent, Freight Dept.
	CLARENCE JOHNSON	Trav. Frt. & Pass. Agent
	J. W. JONES	City Freight Agent
	G. E. SKINNER	City Freight Agent
	H. W. MILLER	City Freight Agent
	J. D. SURLS	Local Freight Agent, N. W. 11th and Hoyt, Phone Capitol 8-9111
REDMOND, ORE.	P. V. McMAHON (Phone 13)	Ag't., Passenger Sta.
SACRAMENTO 14, CAL.	R. L. LAMB, Gen. Ag't., G. N. Ry., 223 Forum Bldg.	
ST. HELENS, ORE.	J. L. McGRAW (Phone 658)	Ag't., S.P.&S. Station
SALEM, ORE.	R. C. TETZLAFF (Ph. 3-3129)	Ag't., O.E.Ry. Fr. Dep.
SAN FRANCISCO 5, CAL.	Northern Pacific Railway 681 Market St. Phone Sutter 1-1078	
	DANIEL TINNEY	General Agent
Great Northern Railway	679 Market St. Phone Sutter 1-6051; 1-6052	
	A. L. SCOTT	Ass't. Gen. Passenger Agent
SEASIDE, ORE.	J. E. ROWE (Ph. 45)	Agent, S.P.&S. Ry. Sta.
SPOKANE 8, WASH.	R. E. HENDERSHOTT	General Agent
	D. W. MORRISON	Traveling Frt. & Pass. Ag't.
	925 Old National Bank Building, Ph. Main 4238	
	RAY L. DUBOIS	General Agent, Passenger Dept., Davenport Hotel, Phone Main 5141
	C. H. HALL	District Passenger Agent, W. 221—First Avenue
	B. B. McCANNON	Ticket Agent, Gt. Nor. Ry. Sta.
VANCOUVER, WASH.	T. S. BRACE, Ag't. (Ph. Oxford 3-1491), SP&SR Sta.	
	C. M. WAGNER (Phone Oxford 4-5151)	Pass. Sta.

Agents of the Great Northern and Northern Pacific Rys. throughout the United States are the direct representatives of the Spokane, Portland and Seattle Railway Co., Oregon Trunk Railway and Oregon Electric Railway Co.

