

Spokane, Washington known as the Queen City of the Inland Empire is the Eastern Terminus of the S. P. & S. Railway. It is the second largest city in the State of Washington and is the center of a vast agricultural and industrial empire.



AUGUST 1, 1954  
Subject to change without notice



*The Northwest's Own Railway*

**THROUGH SERVICE**

VIA

NORTH COAST  
LIMITED

EMPIRE  
BUILDER



**TIME TABLES**

*Pacific Standard Time*

TRAVEL THE  
**COLUMBIA RIVER  
SCENIC ROUTE  
THROUGH THE  
CASCADE RANGE**

AUGUST 1, 1954  
Subject to change without notice



*The Northwest's Own Railway*

**THROUGH SERVICE**

VIA

NORTH COAST  
LIMITED

EMPIRE  
BUILDER



**TIME TABLES**

*Pacific Standard Time*

TRAVEL THE  
**COLUMBIA RIVER  
SCENIC ROUTE  
THROUGH THE  
CASCADE RANGE**



# SPOKANE, PORTLAND AND SEATTLE RAILWAY SYSTEM

S. P. & S. RY. - OREGON TRUNK RY. - OREGON ELECTRIC RY. - (Subsidiaries of Northern Pacific and Great Northern Railways)

## TRANSCONTINENTAL TRAIN SERVICE—BETWEEN PORTLAND, PASCO AND EAST

### SPOKANE, PORTLAND AND SEATTLE, NORTHERN PACIFIC AND CHICAGO, BURLINGTON AND QUINCY RAILWAYS

West Bound, Read Down				Eastbound, Read Up			
Daily C. B. & Q. 49	Daily The Main-streeter C. B. & Q. 47	Daily North Coast Ltd. No. 25	Chicago, Burlington and Quincy Railway April 5, 1954 (Central Time)	Mil. 'm P't	Daily North Coast Ltd. No. 26	Daily The Main-streeter C. B. & Q. 48	Daily C. B. & Q. 22
1.00	11.00	11.30	Lv Chicago (Union Station).....Ar	2327	1.45	8.00	2.40
1.36	11.45	12.06	Lv Aurora.....Ar	2289	12.59	7.11	2.02
3.17	1.54	1.47	Lv Savanna.....Ar	2182	11.11	4.55	12.24
3.40	2.25	2.10	Lv Dubuque.....Ar	2145	11.00	4.15	12.05
5.21	4.41	3.51	Lv LaCrosse.....Ar	2030	9.02	2.10	10.20
5.38	5.10	4.10	Lv Winona.....Ar	2006	8.38	1.35	10.00
7.45	7.35	6.15	Ar St. Paul (Union Station).....Lv	1900	7.00	11.45	8.25
Northern Pacific Railway				N.P. 2			
①N.P.3	N.P.1	6.30	Lv St. Paul (Union Station).....Ar	1900	6.40	11.00	①N.P.4
9.30	8.40	7.00	Lv Minneapolis (Hen. Av. Stn.)Ar	1890	6.10	10.27	7.25
10.15	9.15						6.50
5.05	7.00	5.05	Lv Duluth.....Ar	1881	7.55	12.35	7.55
5.17	7.14	5.17	Lv Superior.....Ar	1877	7.39	12.19	7.39
Streamlined North Coast Limited				Streamlined North Coast Limited			
1.35	11.51	9.21	Lv Staples.....Ar	1733	3.44	7.45	3.25
5.50	2.30	11.25	Lv Fargo.....Ar	1622	1.42	5.12	10.50
8.55	4.27	1.06	Lv Jamestown.....Ar	1530	12.02	3.10	7.35
11.48	6.30	2.49	Lv Bismarck.....Ar	1428	10.13	1.20	4.30
11.30	5.57	2.11	Lv Mandan (Mountain Time).....Ar	1423	9.10	11.58	2.50
2.25	8.10	4.00	Lv Dickinson.....Ar	1322	7.12	9.53	12.01
①5.05	10.43	6.02	Lv Glendive.....Ar	1217	5.10	7.23	①9.15
	12.35	7.27	Lv Miles City.....Ar	1138	3.44	5.27	
	1.48	8.27	Lv Forsyth.....Ar	1093	2.49	4.18	
	4.25	10.28	Lv Billings.....Ar	991	12.53	1.45	
	x11.30		Lv Gardiner (Yel. Nat'l Park).....Ar	929		x10.15	
	7.30	12.35	Lv Livingston.....Ar	875	10.46	11.00	
	8.34	1.25	Lv Bozeman.....Ar	851	10.02	10.05	
	12.05	3.54	Lv Butte.....Ar	756	7.30	6.45	
	11.50	3.00	Lv Helena.....Ar	753	8.00	7.00	
<b>BUS</b>	2.00	5.04	Lv Garrison.....Ar	704	6.26	4.50	<b>BUS</b>
	3.55	6.21	Lv Missoula.....Ar	636	5.03	3.15	
	5.00	7.10	Lv Paradise (Pacific Time).....Ar	565	2.17	12.15	1.25
	8.20	7.18	Lv Sandpoint.....Ar	446		9.57	10.10
	9.10	7.52	Lv Athol.....Ar	418		a 9.20	9.15
	10.15	8.45	Ar Spokane (N.P. Station).....Lv	378	10.45	8.35	8.10
N.P. 5				No. 2			
7.15	9.10	10.53	Lv Spokane (N.P. Station).....Ar	378	10.38	8.10	8.10
10.30	12.15	1.33	Ar Pasco.....Lv	231	7.50	5.10	4.45
S.P. & S. No. 3				S.P. & S. No. 4			
10.40	1.05	3.10	Lv Pasco.....Ar	231	7.15	2.40	3.30
1.15	3.25	5.15	Ar Wishram.....Lv	106	5.10	12.35	12.30
3.55	5.30	7.05	Lv Vancouver.....Ar	10	3.23	10.25	9.55
4.25	*6.00	7.30	Ar Portland (Union Station).....Lv	0	3.00	10.00	9.30

21-43	29	C.B. & Q. Connections at Billings for Denver & Mo. River Points	30	42-20
8.50		Lv St. Louis (Wab.).....Ar		9.55
4.00		Lv Kansas City (CB & Q).....Ar		1.20
5.28		Lv St. Joseph.....Ar		11.45
10.20		Lv Omaha.....Ar		8.40
12.05		Lv Lincoln.....Ar		7.10
6.55		Ar Billings.....Lv		11.00
		Lv Denver.....Ar	7.40	
		Ar Billings.....Lv	1.00	

a—Stops to let off or pick up revenue passengers from or to Missoula and east or Pasco and west where scheduled to stop.  
 x Bus, Winter Season.  
 \* Passengers may remain in sleeping cars at Portland until 7:30 A.M.  
 ① Arrive ② Leave Glendive daily except Sunday.  
 ③ Leave St. Paul daily except Saturday.

### EQUIPMENT

#### STREAMLINED NORTH COAST LIMITED BETWEEN CHICAGO AND PORTLAND

All Lightweight Equipment

S. P. & S. 1-2, N. P. 25-26, C. B. & Q. 25-26

**OBSERVATION LOUNGE-BUFFET CAR**—Between Pasco and Portland. (Car 10 westbound, Car 20 eastbound.)

**OBSERVATION LOUNGE-SLEEPING CAR**—Between Chicago and Pasco. Four bedrooms, 1 compartment, spacious lounge, radio, library, writing desk. Buffet service. (258 westbound, 268 eastbound.)

**STANDARD SLEEPING CAR**—Between Chicago and Portland. Newest type all-room car. 3 bedrooms, 1 compartment, 6 roomettes, 8 duplex roomettes. (257 westbound, 267 eastbound.)

**\*LUXURY "DAY-NITE" COACH**—Between Chicago and Portland. Chaise lounge "sleepy hollow" seats with leg rests for reclining full length. (C253 westbound, C263 eastbound.) Seats reserved in advance. No extra charge.

**COACH-BUFFET-LOUNGE**—Between Chicago and Pasco. De Luxe accommodations expressly for coach passengers. Writing desk, radio, magazines. Sandwiches and beverages.

**DINING CAR SERVICE**—Between Chicago and Portland. Club breakfasts, \$1.25 to \$1.95; Table d'hote dinner, \$2.90; Table d'hote luncheon, \$2.10. Special plate luncheons and dinners, \$1.80. Also a la carte service.

**TICKETS**—All classes of regular and reduced rate rail tickets will be honored for passage on the North Coast Limited.

\*NOTE—Effective Aug. 16, 1954, the N.P. will inaugurate "Vista Dome" Coach service on the North Coast Limited between Chicago and Seattle and shortly thereafter between Chicago and Portland.

#### THE MAINSTREETER BETWEEN CHICAGO AND PORTLAND

S. P. & S. 3-4, N. P. 1-2, C. B. & Q. 47-48

**OBSERVATION LOUNGE-BUFFET CAR**—Between Spokane and Portland. (Car 30 westbound, Car 40 eastbound.)

**OBSERVATION LOUNGE-BUFFET CAR**—Between Chicago and Pasco. 8 Sections. (Car 106 westbound, car 206 eastbound.)

**STANDARD SLEEPING CARS**—Between Chicago and Pasco. 12 Roomette, 1 Single and 4 Double bedrooms. (105 westbound, 205 eastbound.) Passengers will make station taxicab transfer at Spokane at no additional cost to modern standard cars from and to Chicago.

**DINING CAR SERVICE**—Between St. Paul and Pasco.

**RECLINING SEAT COACHES**—Between Chicago and Pasco. Between Spokane and Portland.

#### S. P. & S. No. 5 - 6, (Diesel Power), N. P. No. 5-6 COLUMBIA RIVER EXPRESS

##### BETWEEN SPOKANE, PASCO AND PORTLAND

Deluxe reclining chair car, Pasco-Portland. Reserved seat coach, Cafe car and deluxe coaches, Spokane and Pasco.

Seats in reserved seat coach, Spokane-Pasco, must be reserved in advance.

# SPOKANE, PORTLAND AND SEATTLE RAILWAY SYSTEM

S. P. & S. RY. - OREGON TRUNK RY. - OREGON ELECTRIC RY. - (Subsidiaries of Northern Pacific and Great Northern Railways)

## TRANSCONTINENTAL TRAIN SERVICE—BETWEEN PORTLAND, SPOKANE AND EAST

### VIA CHICAGO, BURLINGTON & QUINCY AND GREAT NORTHERN, SPOKANE, PORTLAND AND SEATTLE RAILWAYS

Westbound, Read Down				Eastbound, Read Up			
Daily No. 47	Daily Western Star No. 53	Daily Empire Builder No. 49	Chicago, Burlington and Quincy Railway April 5, 1954 (Central Time)	Miles from Portland	Daily Empire Builder No. 44	Daily Western Star No. 54	Daily No. 48
11.00	10.50	1.00	Lv Chicago (Un. Stn.).....Ar	2260	2.00	7.20	8.00
11.45	11.35	1.36	Lv Aurora.....Ar	2222	1.18	6.40	7.11
1.54	1.30	3.17	Lv Savanna.....Ar	2115	11.30	4.30	4.55
2.25	1.55	3.40	Lv Dubuque.....Ar	2076	11.10	4.15	4.15
4.41	4.15	6.21	Lv LaCrosse.....Ar	1963	9.17	1.49	2.10
5.10	4.45	6.38	Lv Winona.....Ar	1933	8.55	1.15	1.35
7.35	7.15	7.45	Ar St. Paul (Un. Stn.).....Lv	1833	7.15	11.30	11.45
Great Northern Ry.				Great Northern Ry.			
C'ch's only No. 27	No. 3	No. 1			No. 2	No. 4	C'ch's only No. 28
9.30	8.30	8.15	Lv St. Paul (Un. Stn.).....Ar	1833	7.00	10.30	9.55
10.03	9.00	8.45	Lv Minneapolis (GN Stn.).....Ar	1822	6.25	9.55	9.20
11.45	10.18	10.18	Lv Willmar.....Ar	1731	4.40	7.18	7.18
1.55	12.05	12.05	Lv Breckenridge.....Ar	1618	2.30	5.06	5.06
	10.20		Lv St. Cloud.....Ar			8.20	
	12.33		Lv Fargo.....Ar	1571	1.15	5.64	
3.00	1.55	1.15	Lv Grand Forks.....Ar	1493	4.28	2.40	4.08
	3.30		Lv New Rockford.....Ar	1447	11.19	2.40	
5.18	3.08	3.08	Lv Minot.....Ar	1338	9.32	10.15	11.33
7.25	8.25	4.55	Lv Williston (Central Time) Lv	1218	7.10	7.45	9.05
10.03	10.56	7.15	Lv Williston (Mountain " )Ar	1218	6.00	6.40	7.55
9.25	10.10	6.20	Lv Glasgow.....Ar	1062	3.20	3.40	4.25
12.25	1.20	e9.10	Lv Havre.....Ar	909	12.20	12.22	12.05
3.40	4.40	12.10					
	7.45	①3.30	Ar Great Falls.....Lv	903	①9.00	9.35	
	8.00		Lv Great Falls.....Ar	903		9.20	
6.35	11.00	2.10	Lv Shelby.....Ar	804	10.30	6.40	9.15
7.12	11.30	e 2.40	Lv Cut Bank.....Ar	780	9.56	6.10	8.35
f 8.25	k 12.30		Lv Glacier Park.....Ar	733		1.58	7.20
110.20	k 1.59		Lv Belton.....Ar	676		3.42	6.25
10.49	2.20		Lv Columbia Falls.....Ar	661		3.21	4.60
①10.15	①1.45	①5.10	Lv Kalispell.....Ar	676	①7.10	①3.40	①5.00
11.15	2.40	6.05	Lv Whitefish.....Ar	653	6.35	3.00	4.25
2.00	5.10	5.10	Lv Libby.....Ar	537	12.10	1.40	1.40
2.30	5.40	9.05	Ar Troy (Mountain Time) Lv	519	3.40	11.40	11.10
1.40	4.45	8.05	Lv Troy (Pacific Time).....Ar	519	2.40	10.35	12.05
2.35	f 5.35		Lv Bonner's Ferry.....Ar	488		f 9.49	11.15
3.28	f 6.17		Lv Sandpoint.....Ar	454		f 9.08	10.25
5.50	8.15	11.30	Ar Spokane (GN Stn.).....Lv	379	11.15	7.20	8.00
Spokane, Portland and Seattle Railway				Spokane, Portland and Seattle Railway			
No. 3	No. 3	No. 1			No. 2	No. 4	No. 4
9.15	9.15	12.06	Lv Spokane, GN Stn.....Ar	379	10.35	6.35	6.35
1.05	1.05	3.10	Lv Pasco.....Lv	231	7.30	3.00	3.00
3.25	3.25	5.15	Ar Wishram.....Lv	106	5.10	12.30	12.30
5.30	5.30	7.05	Lv Vancouver.....Ar	10	3.23	10.25	10.25
*6.00	*6.00	7.30	Ar Portland, Un. Stn.....Lv	0	3.00	10.00	10.00

### THE STREAMLINED WESTERN STAR (Lightweight Streamlined Equipment)

#### CHICAGO-PORTLAND NO EXTRA FARE

CB&Q 53-54, GN 3-4, SP&S 3-4

ALL CLASSES OF TICKETS HONORED

**Observation-Lounge-Buffet Car** between Spokane and Portland—contains 8 Sections (Car 30 Westbound, Car 40 Eastbound).  
**Observation-Lounge Car** between Chicago and Spokane—Buffet service and radio reception. Also contains 1 Drawing Room and 2 Double Bedrooms (39 Westbound, 49 Eastbound).  
**Standard Sleeping Cars** offering modern Pullman accommodations between Chicago and Portland, one car containing 4 Sections, 8 Duplex Roomettes and 4 Double Bedrooms. Double Bedrooms are connecting and may be sold ensuite at drawing room rate (32 Westbound, 42 Eastbound).  
**Streamliner Day-Nite Coaches** between Chicago and Spokane. Reclining seats with leg rests forming a couch for sleeping. Wide windows and individual reading lights, modern lounge and dressing rooms. Radio reception. Deluxe coaches between Spokane and Portland. (Seats reserved June 14 to Sept. 9 only.)  
**Buffet Service** between Spokane and Portland.  
**Coffee Shop Car** between St. Paul and Spokane. Selling beer, liquor, fruit, candy bars and magazines throughout the day.  
**Dining Car Service** between St. Paul and Spokane. Traditional famous Great Northern meals. Club breakfasts, plate luncheons, table d'hote luncheons, plate dinners, table d'hote dinners. Also a la carte service for all meals.

† Except Sunday. \* Passengers may remain in sleeping cars at Portland until 7:30 A.M. c—No. 1 stops at Glasgow to discharge revenue passengers from Minot and East and to receive revenue passengers for Spokane and West where No. 1 is scheduled to stop. d—No. 2 stops at Glasgow to discharge revenue passengers from Spokane and West and to receive revenue passengers for Minot and East where No. 2 is scheduled to stop. e—No. 1 stops at Cut Bank to discharge revenue passengers from Williston and east and to receive revenue passengers for scheduled stops Spokane and West. g—No. 2 stops at Cut Bank to discharge revenue passengers from Spokane and West and to receive revenue passengers for scheduled stops Williston and East. k—No. 3 stops at Glacier Park and Belton to receive revenue passengers for Spokane and West where No. 3 is scheduled to stop and to discharge revenue passengers from Great Falls and East. l—No. 4 stops at Belton and Glacier Park to discharge revenue passengers from Spokane and West and to receive revenue passengers for Great Falls and East where No. 4 is scheduled to stop. ④ Bus service, rail tickets honored.





# SPOKANE, PORTLAND AND SEATTLE RAILWAY SYSTEM

S. P. & S. RY. - OREGON TRUNK RY. - OREGON ELECTRIC RY. - (Subsidiaries of Northern Pacific and Great Northern Railways)

## PORTLAND - PUGET SOUND - BRITISH COLUMBIA

Northern Pacific Ry. - Great Northern Ry. - Union Pacific R. R.

Table with columns for N.P., G.N., U.P. and routes like Portland, Un. Sta. Ar., Vancouver, Wn., Ar., Kelso-Longview, Lv., etc.

† Daily except Sunday b To and from Olympia by bus k King Street Station p Stops from Portland and beyond u Union Station

## CONNECTIONS AT SPOKANE AND PASCO

Table showing bus and train connections between Spokane and Pasco, including routes like Great Northern Ry., SPOKANE INT'L.-CAN. PACIFIC, etc.

## Great Northern Ry. Bend, Klamath Falls Bieber

Table with columns for SP&S, Northern Pacific, and routes like Portland, Pasco, Walla Walla, etc.

## MARK YOUR BAGGAGE

All baggage, whether checked or carried with you, should be plainly marked with your name and permanent address. This will insure prompt recovery should it become lost or go astray.

## 4-311 NORTHERN PACIFIC 314-3 Daily

Table listing destinations from Spokane: Portland, Spangle, Rosalia, Oakesdale, Garfield, Palouse, Pullman, Moscow, Kendrick, Juliaetta, Lewiston.

## SOUTHERN PACIFIC COMPANY

Table with columns for Southbound-Read Down and Northbound-Read Up, listing routes like Portland, Eugene, Klamath Falls, etc.

a-via P G Lines Bus from and to Albany.

## EQUIPMENT OF TRAINS

Trains 9-10, Shasta Daylight—Streamlined Air Conditioned Train-Radio Parlor Obs. Reclining Chair Cars, Diner, Coffee Shop and Tavern Car. Reserved seat Chair Car. Train 58 will take transfers from No. 9 at Martinez.

# SPOKANE, PORTLAND AND SEATTLE RAILWAY SYSTEM

S. P. & S. RY. - OREGON TRUNK RY. - OREGON ELECTRIC RY. - (Subsidiaries of Northern Pacific and Great Northern Railways)



## Sleeping, Parlor Car and Reserved Seat Fares

Table showing fares between various cities like Billings, Minneapolis, St. Louis, etc., with columns for Parlor Car, Standard, and Lower Berth.

For information only. Subject to change without notice.

### Federal Tax Extra

## INDUSTRIAL LOCATIONS

National concerns continue to come to the Pacific Northwest and are choosing the Portland area as a location for their distribution warehouses. This is not only because of the tremendous growth in population but because of the strategic location for distribution throughout the Pacific Northwest, Alaska, the Hawaiian Islands, and the Orient.

The SP&S RAILWAY SYSTEM owns and serves a great many industrial locations along the Columbia and Willamette Rivers as well as in the cities of both Oregon and Washington. Contact the Industrial Department for information.

R. W. WEST  
General Industrial Agent  
American Bank Building  
P. O. Box 571  
Portland 7, Oregon

## RATES FOR SLEEPING CAR ACCOMODATIONS

Large table showing rates for Roomette, Bedroom, Suite, Compartment, and Drawing Room with columns for different berth configurations and prices.

Through sleeping cars not operated in all trains; fare applies for continuous trip via direct connections. A duplex roomette is a single private room with wash basin and toilet; a bedroom contains lower and upper berth, wardrobe and complete toilet facilities; a compartment is a private room with lower and upper berths, wash basin and toilet; a drawing room has a divan berth in addition.

Exclusive occupancy of a drawing room requires 1 1/2 adult rail tickets, or their equivalent; for 2 bedrooms en suite 2 adult tickets; for compartment, duplex-roomette, single or double bedroom, one adult ticket between S. P. & S.-N. P.-G. N. and connections; 1-1/10 tickets between certain other lines; for section, one adult ticket for each berth.



# SPOKANE, PORTLAND AND SEATTLE RAILWAY SYSTEM

S. P. & S. RY.—OREGON TRUNK RY.—OREGON ELECTRIC RY.—(Subsidiaries of Northern Pacific and Great Northern Railways)



Mt. Hood (11,245 ft.) and Timberline Lodge at the 6000 foot level. Reached by short motor trip or by sight seeing buses from Portland, Oregon. Ski-lift showing above center of lodge extends one mile to 7000 foot level.



Amber Lake—thirty miles west of Spokane on S.P. & S.Ry. main line.

Your Choice of... Three Daily Trains  
Between PORTLAND and SPOKANE

See Page 4 For Detailed Schedules

# FAST DELIVERY

For prompt pickup and fast delivery (within established vehicle limits everywhere) specify Railway Express



Columbia River—near Wishram, Wash. on S.P. & S.Ry. main line.

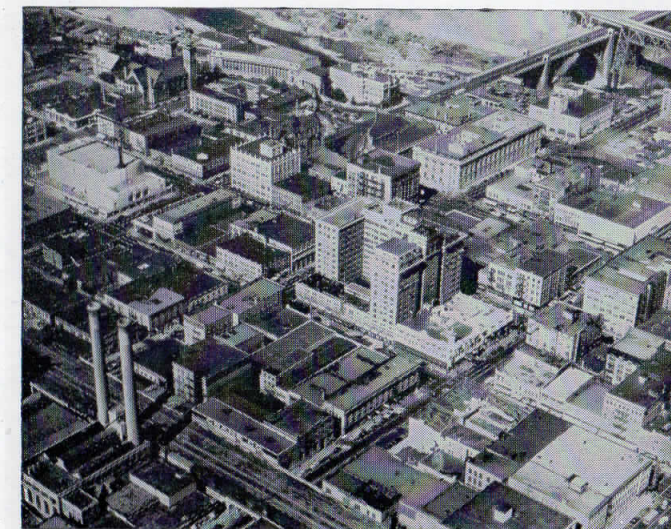


# SPOKANE, PORTLAND AND SEATTLE RAILWAY SYSTEM

S. P. & S. RY.—OREGON TRUNK RY.—OREGON ELECTRIC RY.—(Subsidiaries of Northern Pacific and Great Northern Railways)



Airplane view of Vancouver, Washington and S.P. & S. bridge across Columbia River



Spokane — Queen City of the Inland Empire

## NEED A HOTEL RESERVATION?

Use  
**WESTERN UNION HOTEL ROOM FINDER SERVICE**

To make and confirm reservations for the type of accommodations you want at any distant city.

**CONVENIENT! FAST! INEXPENSIVE!**



Telegram tolls and small service cost may be charged to your Western Union charge account or credit card—or billed direct to you at home or office.



## NBC Network

**Monday Nights**

8 to 8:30 P.M.  
Eastern Standard Time

7 to 7:30 P.M.  
Central Standard Time

9:30 to 10 P.M.  
Mountain Standard Time

8:30 to 9 P.M.  
Pacific Standard Time

**GORDON MacRAE**

and Guest Stars from Stage, Screen & Radio



Portland — the Rose City



# SPOKANE, PORTLAND AND SEATTLE RAILWAY SYSTEM

S. P. & S. RY.—OREGON TRUNK RY.—OREGON ELECTRIC RY.—(Subsidiaries of Northern Pacific and Great Northern Railways)

## GENERAL INFORMATION

**NOTE**—This folder has been compiled with care, but may contain errors. Furthermore, it is sometimes necessary to change schedules without notice, trains shown are sometimes unavoidably delayed and connections missed. We hope none of our patrons will be inconvenienced by any of these causes, but the Railway Company will not be liable therefor.

**ADJUSTMENT OF FARES.** In cases of dispute with conductors or agents, passengers should pay fare required, take receipt and communicate with Auditor Revenue Accounts, S. P. & S. Ry., Box 571, Portland 7, Ore.

**REDEMPTION OF TICKETS.** Wholly unused tickets will be redeemed by selling agent. Partly used tickets will be redeemed under tariff regulations on application to Auditor Revenue Accounts.

**TICKET LIMITS.** Tickets will be honored for continuous passage to destination when presented not later than 4:00 a.m. standard time of the day following date of expiration as punched or otherwise shown on ticket. One-way tickets will be honored for passage within 30 days, round-trip tickets 6 months, in addition to date of sale.

**FEDERAL TAX.** Fares quoted in this folder do not include 10% Federal tax.

**STOPOVERS** will be allowed at all regular scheduled stops within limits, on application to Conductor.

**CHILDREN'S FARES.** Children under five years of age, when accompanied by parent or guardian, will be carried free of charge. Children five years of age and under twelve years of age will be charged one-half of the adult fares. Children of five and under twelve years of age who are not mature enough to take care of themselves when traveling alone must not be ticketed unless accompanied by parent or guardian. Children twelve years of age and over will be charged the adult fare.

**MARK YOUR BAGGAGE.** All baggage should show name and permanent address of owner. Appropriate gummed labels may be secured from Ticket or Baggage Agent.

**HAND BAGGAGE** in Pullmans is restricted to what can be conveniently placed in berth or at seat occupied by passenger.

**BAGGAGE MAXIMUMS.** Ordinarily 150 lbs. is free allowance for each adult ticket. No single piece of baggage exceeding 300 pounds in weight, or 72 inches in greatest dimension, or exceeding \$2500.00 in value will be checked. Free allowances are subject to tariff stipulation as to contents, weight, value and size.

**BAGGAGE INSURANCE.** A charge of only twenty cents is made for each hundred dollars value declared above \$100 for baggage checked for each adult passenger and above \$50 for each half-fare ticket. The maximum baggage valuation which may be insured on a single ticket is \$2500.

**LIMITED LIABILITY.** Excess value of baggage must be declared and paid for at time of checking.

**BICYCLES** (not motorcycles), baby carriages, dogs and guns are carried in baggage cars subject to tariff regulations.

**LOST ARTICLES** should be inquired for at the Baggage Office, Union Station, Portland, Oregon, or S. P. & S. Station, Spokane, Wash.

**RESPONSIBILITY.** No responsibility is assumed for unchecked articles left in stations or cars.

## GENERAL OFFICES

Amer. Bank Bldg., 621 S.W. Morrison St., Box 571, Portland 7, Oregon

JOHN M. BUDD, President, St. Paul 1, Minn.  
 ROBT. S. MACFARLANE, Vice-President, St. Paul 1, Minn.  
 J. C. MOORE, Vice-President, Portland, Oregon  
 A. J. HUNT, Asst. to Vice-Pres. & Gen. Mgr., Portland, Oregon  
 GEO. F. EHLEN, Traffic Manager, Portland, Oregon  
 H. W. SHIELDS, Asst. Traffic Manager, Portland, Oregon  
 W. J. CROSSIE, General Passenger Agent, Portland, Oregon  
 E. H. BLOCK, General Freight Agent, Portland, Oregon  
 R. W. WEST, Gen. Industrial Agent, Portland, Oregon  
 F. J. HARRIS, Asst. General Industrial Agent, Portland, Oregon  
 E. H. SHOWALTER, General Manager, Portland, Oregon  
 N. S. WESTERGARD, Asst. to Gen. Mgr., Portland, Oregon  
 J. L. MONAHAN, Superintendent, Portland, Oregon  
 C. E. BARNES, Gen'l Supt. Motive Power, Vancouver, Wash.  
 C. F. THOMAS, Secretary and Chief Engineer, Portland, Oregon  
 T. L. PADDEN, Treasurer, Portland, Oregon  
 G. R. WILLIAMS, Purchasing Agent, Portland, Oregon  
 L. W. ALBERTSON, Comptroller, Portland, Oregon  
 H. L. KENDALL, Auditor Disbursements, Portland, Oregon  
 E. C. MICHELSEN, Auditor Revenue Accounts, Portland, Oregon  
 C. E. BROEDER, Auditor Misl. Accounts, Portland, Oregon  
 G. C. GRAHAM, Auditor Machine Section, Portland, Oregon  
 W. J. SHEEHAN, Gen'l Claim Agent, Portland, Oregon  
 W. P. GARRETT, Right of Way and Tax Agent, Portland, Oregon  
 W. T. COWAN, Superintendent Dining Cars, Portland, Oregon

### Representatives

ALBANY, ORE. .... WM. BODNO (Phone M. 29D) ... Agt., O. E. Ry. Sta.  
 ASTORIA, ORE. .... R. C. BAKER, 20th & Commercial (Phone 113) Agt.  
 BEND, ORE. .... E. A. KOSKELA (Phone 1360) Agt. Passenger Sta.  
 G. A. SILKWORTH (Phone 438) ... General Agent  
 S. A. SEXSMITH (Ph. 5-8757, 5-8758) Agt. O.E.Ry. Sta.  
 W. Z. MYERS (Phone 5-8750, 5-8759) ... General Agt.  
 J. H. TAYLOR ... Traveling Frt. & Pass. Agent

HILLSBORO, ORE. .... H. SWENSON (Ph. 1944) ... Agt., O.E.Ry. Frt. Depot  
 JUNCTION CITY, ORE. .... L. W. MALLORY (Ph. M. 382) Agt., O.E.Ry. Frt. Depot  
 LOS ANGELES 14, CALIF.  
 Great Northern Railway 510 West Sixth St., Phone Vandike 1201  
 S. L. WILLIAMS ... District Passenger Agent  
 Northern Pacific Railway 510 West Sixth St., Phone Trinity 2321  
 D. F. WALKER ... General Agent

OAKLAND 12, CAL.  
 Great Northern Railway 611-612 Cen. Bk. Bl., Ph. Templebar 2-7672; 2-7673  
 A. F. NIKOLAI ... General Agent  
 Northern Pacific Railway 815 Central Bank Bldg., Ph. Glencourt 1-8717  
 SPENCER A. JEWELL ... General Agent

PORTLAND 7, ORE. .... A. C. STICKLEY ... GAPD (SP&S-NP. Rys.)  
 439 S.W. 6th Ave., Telephone Capitol 1311  
 A. W. GUSEY ... GAPD (SP&S-GN. Rys.)  
 607 S.W. Washington St., Telephone BE. 7273  
 J. L. MILLER, Ticket Agt., Union Station, Foot of  
 N.W. 6th Ave., Telephone Broadway 3421

H. K. HALLGREN ... District Passenger Agent  
 R. A. LAWRENCE ... General Agent, Freight Dept.  
 CLARENCE JOHNSON ... Trav. Frt. & Pass. Agent  
 ALEX H. STUCKERT ... City Freight Agent  
 J. W. JONES ... City Freight Agent  
 G. E. SKINNER ... City Freight Agent  
 P. H. BRINGMANN, Local Freight Agent, N. W.  
 11th and Hoyt, Phone ATwater 9111

REDMOND, ORE. .... A. F. SHUGERT (Phone 13) ... Agt., Passenger Sta.  
 SACRAMENTO 14, CAL. .... T. L. MAY, Gen. Agt., G. N. Ry., 223 Forum Bldg.  
 ST. HELENS, ORE. .... J. L. MCGRAW (Phone 658) ... Agt., S.P.&S. Station  
 SALEM, ORE. .... J. D. SURLS (Ph. 3-3129) Agt., O.E.Ry. Frt. Depot  
 SAN FRANCISCO 5, CAL.  
 Northern Pacific Railway 681 Market St. Phone Sutter 1-1078  
 DANIEL TINNEY ... General Agent  
 Great Northern Railway 679 Market St. Phone Sutter 1-6051; 1-6052  
 A. L. SCOTT ... General Agent, Passenger Dept.

SEASIDE, ORE. .... P. J. MARTELL (Ph. 45) ... Agent, S.P.&S. Ry. Sta.  
 SPOKANE 8, WASH. .... R. E. HENDERSHOTT ... General Agent  
 D. W. MORRISON, Traveling Frt. & Pass. Agt.  
 925 Old National Bank Building, Ph. Main 4238  
 RAY L. DUBOIS, General Agent, Passenger Dept.,  
 Davenport Hotel, Phone Main 5141  
 C. G. SHEFFIELD, City Passenger & Ticket Agt.,  
 Sprague Ave. & Wall St. Phone Main 5321  
 B. B. McCANNON, Ticket Agent, Gt. Nor. Ry. Sta.  
 VANCOUVER, WASH. .... J. CONDRA, Agt. (Ph. Oxford 3-1491), S.P.&S.R. Sta.  
 C. M. WAGNER (Phone Oxford 5-2941) ... Pass. Sta.

Agents of the Great Northern and Northern Pacific Rys. throughout the United States are the direct representatives of the Spokane, Portland and Seattle Railway Co., Oregon Trunk Railway and Oregon Electric Railway Co.

