



THROUGH SERVICE  
VIA

NORTH COAST  
LIMITED

EMPIRE  
BUILDER



# TIME TABLES

JULY 1, 1947

Subject to change without notice

TRAVEL THE  
COLUMBIA RIVER  
SCENIC ROUTE  
THROUGH THE  
CASCADE RANGE



THROUGH SERVICE  
VIA

NORTH COAST  
LIMITED

EMPIRE  
BUILDER



# TIME TABLES

JULY 1, 1947

Subject to change without notice

TRAVEL THE  
COLUMBIA RIVER  
SCENIC ROUTE  
THROUGH THE  
CASCADE RANGE

## SPOKANE, PORTLAND AND SEATTLE RAILWAY SYSTEM

S. P. & S. RY.—OREGON TRUNK RY.—OREGON ELECTRIC RY.—(Subsidiaries of Northern Pacific and Great Northern Railways)



### TRANSCONTINENTAL TRAIN SERVICE—BETWEEN PORTLAND, PASCO AND EAST

SPOKANE, PORTLAND AND SEATTLE, NORTHERN PACIFIC  
AND CHICAGO, BURLINGTON AND QUINCY RAILWAYS

Eastbound, Read Down

Westbound, Read Up

Daily No. 6	Daily No. 4	M.	Spokane, Portland and Seattle Railway	Daily No. 3	Daily No. 5
9.00	8.45	0	Lv Portland, Union Station Ar	7.35	4.40
9.35	9.15	10	Lv Vancouver.....Ar	7.05	4.10
12.37	12.01	106	Lv Wishram.....Ar	4.25	1.20
3.45	2.40	231	Ar Pasco.....Lv	1.50	*10.40
No. 4	No. 2	Northern Pacific Ry.		No. 1	No. 3
4.35	5.02	231	Lv Pasco.....Ar	12.13	10.35
8.20	8.15	378	Ar Spokane (N.P. Station) Lv	9.00	6.50
9.25	8.40	378	Lv Spokane (N.P. Station) Ar	8.35	6.20
10.46	9.26	418	Ar Athol.....Lv	7.41	5.13
11.45	10.04	446	" Sand Point....." "	7.02	4.33
3.35	12.30	564	" Paradise....." "	4.30	1.20
7.00	3.35	687	" Missoula....." "	3.15	11.35
9.15	5.00	703	" Garrison....." "	1.40	9.35
11.25	6.40	759	" Helena....." "	x11.15	7.30
11.10	6.30	761	" Butte....." "	12.25	7.45
2.52	9.30	857	" Bozeman....." "	8.58	4.02
4.00	10.25	883	" Livingston....." "	8.00	3.00
10.30	10.30	937	Ar Gardiner (Yel. Nat'l Pk.) Lv	7.45	7.45
7.00	12.50	998	Ar Billings.....Lv	5.10	11.45
9.40	3.05	1113	" Forsyth....." "	2.45	8.58
10.55	4.13	1137	" Miles City....." "	1.35	7.45
1.10	5.52	1216	" Glendive.....Lv	11.50	5.48
11.35	8.30	1330	" Dickinson....." "	9.12	2.55
2.55	10.55	1453	" Mandan....." "	6.40	12.27
4.35	12.20	1445	" Bismarck....." "	7.15	12.10
7.30	2.10	1539	" Jamestown....." "	4.55	8.55
10.50	4.11	1630	" Fargo....." "	2.38	5.45
3.00	6.42	1763	" Staples....." "	12.02	1.25
7.44	z10.34	1886	Ar Superior.....Lv	z 7.45	z 7.52
8.00	z10.50	1890	" Duluth....." "	z 7.30	z 7.40
7.10	9.27	1880	Ar Minneapolis (Hen. Av. St) Lv	9.15	9.55
7.45	10.00	1890	Ar St. Paul (Union Station) Lv	8.40	9.10
Zephr No. 22	No. 50	Burlington Route		No. 51	No. 49
8.29	10.30	1890	Lv St. Paul (Union Station) Ar	8.15	7.45
9.57	12.20	"	" Winona....." "	"	5.40
10.21	1.01	"	" LaCrosse....." "	5.05	5.21
12.05	3.30	"	" Dubuque....." "	2.35	3.40
12.31	4.15	"	" Savanna....." "	2.11	3.17
2.13	6.59	"	" Aurora....." "	11.50	1.35
2.55	7.50	2321	Ar Chicago (Union Station) Lv	11.00	1.00
No. 42	No. 43	Burlington Route		No. 43	No. 43
.....	9.45	998	Lv Billings.....Ar	.....	9.35
.....	7.00	1840	Ar Denver.....Lv	.....	10.30
.....	9.30	1839	Ar Lincoln.....Lv	.....	11.40
.....	3.40	"	" St. Joseph....." "	.....	7.42
.....	11.10	1894	Ar Omaha.....Lv	.....	9.30
.....	6.15	2049	" Kansas City....." "	.....	6.00
.....	7.36	2458	" St. Louis....." "	.....	12.15

x Bus. z Motor. c Connects with No. 3 at Minneapolis.  
\* Daily except Sunday by bus. • N.P. Train 5 Lv. Spokane 7:00 a.m.  
Ar. Pasco 10:30 a.m.

### EQUIPMENT

S. P. & S. 3-4, N. P. 1-2—NORTH COAST LIMITED  
BETWEEN PORTLAND AND CHICAGO VIA  
S. P. & S.—N. P.—C. B. & Q.

Completely air conditioned.

Buffet Lounge Car:  
Portland-Chicago.

Standard Sleeping Car:  
Portland-Chicago: 10 section, 1 compartment, 1 drawing room (P-40 Eastbound, B-19 Westbound).

Tourist Sleeping Car:  
Portland-Chicago, 14 section (PN Eastbound, BR Westbound).

Luxury Day-Nite Chair Car (chair car chaise lounge seats with leg rests for reclining full length; seats not reserved).  
Portland-Chicago.

Buffet and Dining Car Service:  
Portland-Chicago.

DeLuxe Reclining Chair Car (seats not reserved):  
Portland-Spokane.

N. P. 3-4—ALASKAN (air conditioned)

Standard Sleeping Car:  
Spokane-St. Paul: 10 section, 1 compartment, 1 drawing room (Car No. 8 Eastbound, No. 9 Westbound).

Cafe Car and Reclining Seat Coach:  
Pasco-St. Paul.

S. P. & S. No. 5-6, N. P. No. 4-5—COLUMBIA RIVER  
EXPRESS—ALASKAN

Between Portland, Pasco and Spokane.  
Reserved seat buffet coach and coaches, Portland-Pasco.  
Cafe car and air-conditioned coaches, Pasco and Spokane.  
Seats must be reserved in advance.  
Seat 50c plus tax, Portland to Spokane.

### A TRANS-CONTINENTAL SYSTEM OF RAILWAYS THROUGH AMERICA'S WONDERLAND

Traversing the northern states between the Pacific Northwest and Chicago presents a veritable wonderland offering passengers a splendid variety of ever-changing scenery.

Over these lines, between Portland, Pasco, Spokane, Minneapolis, St. Paul and Chicago, are run two of America's finest trains (the North Coast Limited and the Alaskan), providing passengers every feature of modern railway travel for their comfort, pleasure and economy.





# SPOKANE, PORTLAND AND SEATTLE RAILWAY SYSTEM

S. P. & S. RY.—OREGON TRUNK RY.—OREGON ELECTRIC RY.—(Subsidiaries of Northern Pacific and Great Northern Railways)

## TRANSCONTINENTAL TRAIN SERVICE—BETWEEN PORTLAND, PASCO AND EAST

### VIA SPOKANE, PORTLAND AND SEATTLE, GREAT NORTHERN AND CHICAGO, BURLINGTON & QUINCY RAILWAYS

Eastbound, Read Down				Westbound, Read Up			
Daily No. 6	Daily No. 4	Daily No. 2	M.	Daily No. 1	Daily No. 3	Daily No. 5-5	
9.00	8.45	3.00		Lv Portland, Union Station	Ar	8.00	7.35
9.35	9.15	3.23	10	Lv Vancouver	Ar	7.32	7.05
12.37	12.01	5.28	106	Lv Wishram	Ar	5.25	4.25
3.45	2.40	7.45	231	Ar Pasco	Lv	3.10	1.50
8.20		10.55	378	Ar Spokane, N. P. Station	Lv		7.00
	6.50		380	Ar Spokane, G. N. Station	Lv	12.06	9.45
No. 28	No. 4	No. 2		Great Northern Ry.			
10.00	7.30	11.30	380	Lv Spokane, G. N. Station	Ar	11.30	9.15
12.20	9.33		455	Ar Sand Point	Lv		4.00
1.20	10.20		488	Ar Bonner's Ferry	Lv		7.30
3.30	11.20	2.45		Ar Troy	Lv	8.15	2.00
4.02	12.53			Ar Libby	Lv	6.00	5.55
7.45	3.50	6.50		Ar Whitefish	Lv	6.15	3.10
				Ar Kalispell	Lv		2.00
8.45	4.55	Stream-lined	676	Ar Columbia Falls	Lv		2.45
7.50	4.15	Empire Builder	678	Ar Belton	Lv		11.15
7.8.25	4.40		734	Ar Glacier Park	Lv		10.14
10.40	6.45		806	Ar Cut Bank	Lv	2.45	6.43
11.52	8.35			Ar Shelby	Lv	2.10	10.30
12.45				Ar Great Falls	Lv		7.05
	11.30		905	Ar Billings	Lv		11.30
	6.55		1128	Ar Havre	Lv	12.05	8.10
3.35	10.55	12.55	910	Ar Glasgow	Lv	9.10	4.30
7.15	2.25	a 3.45	1064	Ar Williston *	Lv	6.20	12.55
11.05	5.55	6.40	1340	Ar Minot	Lv	4.55	10.50
4.00	9.35	10.05		Ar Grand Forks	Lv		5.25
	2.40		1548	Ar Superior	Lv		9.45
	q 6.45		1838	Ar Duluth	Lv		9.30
	q 7.00		1843	Ar New Rockford	Lv		3.02
7.25	11.48			Ar Fargo	Lv		1.00
10.05	4.55	1.55	1573	Ar Breckenridge	Lv		11.57
12.45	6.15	3.00		Ar Morris	Lv		12.45
2.00	7.25			Ar Willmar	Lv		10.05
3.40		4.46		Ar Minneapolis (Hemp Av. Sta)	Lv	8.30	9.25
5.55	10.50	6.30	1804	Ar St. Paul (Union Station)	Lv	8.00	8.50
6.30	11.20	7.00	1814				8.45
Zephyr No. 22	No. 54	No. 44		Burlington Route			
8.29	11.55	7.15	1814	Lv St. Paul (Union Station)	Ar	7.45	8.30
9.57		8.42		Ar Winona	Lv	5.56	
10.21	3.00	9.17		Ar La Crosse	Lv	5.21	5.20
12.05		11.00		Ar Dubuque	Lv	3.50	2.50
		11.33		Ar Savanna	Lv		
2.13	8.05	1.17	2245	Ar Chicago (Union Station)	Lv	1.35	12.05
2.55	8.55	2.00				1.00	11.15
No. 42				Burlington Route			
	9.45		1128	Lv Billings	Ar		9.35
	7.00		1840	Ar Denver	Lv		10.30
	9.30		1969	Ar Lincoln	Lv		11.40
	11.10		2024	Ar Omaha	Lv		9.30
	3.40		2115	Ar St. Joseph	Lv		7.42
	6.15		2179	Ar Kansas City	Lv		6.00
	7.36		2458	Ar St. Louis	Lv		12.15

▲ Stops to discharge passengers from Portland. q Daily except Monday.  
 † Except Sunday. \* Central time. ■ Mountain time.  
**G. N. No. 2.**—Stops at Shelby and Cut Bank to discharge revenue passengers from Spokane and West and pickup passengers for Williston and East.  
 a—To discharge revenue passengers from Spokane and West and pick up for Fargo and East.  
**G. N. No. 1.**—Stops at Cut Bank and Shelby to discharge revenue passengers from Williston and East and to pick up passengers for Spokane and West.  
 a—To discharge revenue passengers from Fargo and East and pick up for Spokane and West.

N. A. C. Non-air Conditioned Light face figures denote A. M. time. Bold face figures denote P. M. time. Ar. Arrive. Lv. Leave. f Stop on Signal.

### S. P. & S. 1-2, G. N. 1-2, NEW STREAMLINED EMPIRE BUILDER Between PORTLAND and CHICAGO Via S. P. & S., G. N., C. B. & Q.

Completely air conditioned. No extra fare. Radio.

**Observation-Lounge-Cafe Car:**  
Portland-Spokane.

**Observation-Lounge-Sleeping Car:**  
Spokane-Chicago: 2 double bedrooms, 1 drawing room, (29 Eastbound, 19 Westbound).

**Standard Sleeping Car:**  
Portland-Chicago: 8 duplex roomettes, 4 double bedrooms, 4 sections (P-28 Eastbound, P-18 Westbound).

**Luxury Day-Nite Coach:**  
Portland-Chicago: 48 reserved seats, reserved in advance, no extra cost. (P-202 Eastbound, P-102 Westbound).

**Deluxe Chair Car:**  
Portland-Spokane: 60 reclining seats not reserved.

**Buffet Dining Car Service**  
Portland-Spokane-Chicago.

Note: The following reduced fare tickets will not be honored on the new Empire Builder: Clergy, Charity, Employee, D.V.S., V.A.H., Blind and Attendant, Blind and Guide Dog, Furlough, Dischargee, Circus, Driver's or Caretaker's tickets and Live Stock Contracts.

### S. P. & S. 3-4, G. N. 3-4, THE ORIENTAL LIMITED

All regularly assigned equipment is air conditioned. All classes of tickets honored.

**Standard Sleeping Car**  
Portland-Chicago: 8 sections, 2 compartments, 1 drawing room (Car P-6 Eastbound, Car B-6 Westbound). This car in service June 18 to October 1 only.

**Observation-Buffer-Lounge:**  
Portland-Spokane-Chicago: 8 sections (Car 10 Eastbound, Car 10 Westbound).

**Standard Sleeping Cars, Observation Club Cars:**  
Portland-Spokane, Spokane-Chicago. Radio.

**Tourist Sleeping Car:**  
Portland-Chicago: 16 section (P-J Eastbound, B-J Westbound).

**Deluxe Reclining Chair Cars** (seats not reserved):  
Portland-Spokane-Chicago.

**Buffet-Dining Car Service:**  
Portland-Spokane-Chicago.

### A TRANS-CONTINENTAL SYSTEM OF RAILWAYS THROUGH AMERICA'S WONDERLAND

Traversing the northern states between the Pacific Northwest and Chicago presents a veritable wonderland offering passengers a splendid variety of ever-changing scenery.

Over these lines, between Portland, Spokane, Minneapolis, St. Paul and Chicago, are run two of America's finest trains (the Empire Builder and the Oriental Limited), providing passengers every feature of modern railway travel for their comfort, pleasure and economy.

# SPOKANE, PORTLAND AND SEATTLE RAILWAY SYSTEM

S. P. & S. RY.—OREGON TRUNK RY.—OREGON ELECTRIC RY.—(Subsidiaries of Great Northern and Northern Pacific Railways)



## PORTLAND - WISHRAM - PASCO - SPOKANE TRAINS

Eastbound, Read Down				Westbound, Read Up									
No. 4 Daily	No. 4 Daily	No. 6 Daily	No. 2 Daily	Elva.	Miles	Spokane, Portland and Seattle Railway		No. 1 Daily	No. 5 Daily	No. 3 Daily	No. 3 Daily	SPECIAL STOPS	
8.45	8.45	9.00	3.00	32	0.0	Lv	PORTLAND ("City of Roses")	8.00	4.40	7.35	7.35	No's 1 & 2 Stops only as shown	
		f 9.14		46	7.0		Union Station		f 4.23			No. 3. At any station to discharge revenue passengers from east of Spokane.	
9.06	9.06	9.21	3.20	46	10.0	Ar	East St. Johns 5 snow mts.	7.35	4.15	7.10	7.10	At any station west of Pasco to discharge revenue passengers from Vancouver.	
							North Portland (Pac. Int. Lvst. Exp.)					At any station east of Pasco to receive revenue passengers for Vancouver and Portland.	
9.15	9.15	9.35	3.23	46	10.0	Lv	VANCOUVER (founded 1825)	7.32	4.10	7.05	7.05	No. 4. At any station to discharge revenue passengers destined east of Spokane.	
		f 9.50		48	19.3	Along	Fisher (World famous prune belt)		f 3.52			At any station west of Pasco to discharge revenue passengers from Spokane.	
m 9.38	m 9.38	10.05		48	24.4	the	Camas (Large paper and pulp mills)		f 3.42	m 6.38	m 6.38	At any station east of Pasco to receive revenue passengers for Vancouver and Portland.	
		/10.10		48	27.6	North	Washougal (Large woolen mills)		f 3.26			No. 3. At any station to discharge revenue passengers from Spokane.	
		/10.18		48	32.2	Bank	Mount Pleasant (Mt. Hood, 11,225 ft.)		f 3.19			At any station west of Pasco to discharge revenue passengers from Vancouver.	
		/10.23		49	35.6	of the	Cape Horn		f 3.14			At any station east of Pasco to receive revenue passengers for Vancouver and Portland.	
		/10.27		51	37.8	Col-	Prindle (Columbia River)		f 3.10			No. 4. At any station to discharge revenue passengers destined east of Spokane.	
		/10.35		51	42.8	umbia	Skamania (Beacon Rock, alt. 700 ft.)		f 3.02			At any station west of Pasco to discharge revenue passengers from Spokane.	
		10.46		74	48.8	River	North Bonneville (Bonneville Dam)		2.53			At any station east of Pasco to receive revenue passengers for Vancouver and Portland.	
		10.56		98	53.8	over	Stevenson (Cascades of Columbia)		2.45	c 5.55	c 5.55	No. 3. At any station to discharge revenue passengers from Vancouver.	
		/11.02		98	57.7	the	Carson		f 2.39			At any station west of Pasco to discharge revenue passengers from Vancouver.	
		/11.12		99	65.8	His-	Cooks (Mitchell Point to south)		f 2.29			At any station east of Pasco to receive revenue passengers for Vancouver and Portland.	
		/11.18		101	70.9	toric	Hood (Mt. Hood, 11,225 ft. visible)		f 2.23			No. 4. At any station to discharge revenue passengers destined east of Spokane.	
		/11.22		101	72.7	Lewis	Underwood (Apple country)		f 2.20			At any station west of Pasco to discharge revenue passengers from Vancouver.	
		11.35		101	75.6	and	Bingen-White Salmon (Mt. Hood)		2.15	f 5.24	f 5.24	At any station east of Pasco to receive revenue passengers from Vancouver.	
		11.55		101	85.3	Clark	LYLE (Memaloose Is. Indian burying)		1.57	5.10	5.10	No. 3. At any station to discharge revenue passengers from Vancouver.	
		/12.08		123	94.0	Trail	Northdales (Mt. Hood visible)		f 1.43			At any station west of Pasco to discharge revenue passengers from Vancouver.	
				141	98.4	of	Spearfish (Carved Indian Rocks)					At any station east of Pasco to receive revenue passengers from Vancouver.	
		/12.21		161	102.8	1805-9	Avery		f 1.30			Stops to receive passengers made only upon advance arrangements through Agent Stops to discharge passengers made upon application to conductor.	
		12.28		166	106.1	Ar...	WISHRAM (Celilo Falls)	5.30	1.25	4.40	4.40	References: a Will stop to discharge revenue passengers from Spokane.	
12.05	12.05	12.37	5.21	166	106.1	Lv	WISHRAM (Mt. Hood visible)	5.25	1.20	4.25	4.25	b Will stop on signal to receive revenue passengers for Bingen-White Salmon, Vancouver and Portland.	
h 12.19	h 12.19	12.51		175	114.3		Maryhill		1.10	b 4.15	b 4.15	c Will stop on signal to receive revenue passengers from Vancouver and Portland.	
		f 1.01		179	118.9		Cliffs (Mt. Hood, 11,225 ft. visible)		f 1.01			f Stop on signal.	
		f 1.20	5.24	203	130.6		Goodnoe		/12.47			g Will stop on signal to discharge revenue passengers from Portland and Vancouver.	
		f 1.35		216	140.8		Sundale		/12.35			h Will stop to discharge revenue passengers from Portland, Vancouver and Bingen-White Salmon.	
		1.45		230	146.7	Along	Eosevelt		12.28			k Stops daily except Sunday.	
		f 1.58		242	157.9	the	McCredie		/12.16			m Stops to receive or discharge revenue passengers to or from Pasco and East.	
		f 2.03		241	162.3	North	Alderdale		/12.10			t Telegraph stations.	
		f 2.13		259	170.7	Bank	Whitcomb		/12.01			N.A.C. Non air-conditioned.	
		f 2.27		266	180.5	of	Paterson		/11.49			A.C. Air conditioned.	
		f 2.38		284	192.9	umbia	Plymouth (Opp. Old Oregon Trail)		/11.38				
		2.44		301	198.2	River	Berrian		11.33				
		f 2.52		323	213.4		Yellepit (Named after Indian chief)		/11.27				
		f 3.12		340	219.9		Hover met by Lewis & Clark, 1805-6)		/11.01				
		f 3.29		348	224.1		Finley		/10.55				
		3.38		352	229.2		Kennewick (Columbia River		10.48	f 1.57	f 1.57		
		3.46	7.45	358	231.3	Ar...	PASCO Crossing)	3.10	10.40	1.50	1.50		
2.40	2.40												
4.12	3.00	4.35	7.55	358	231.3	Lv	PASCO	3.00	10.30	1.35	12.38		
		3.35		454	244.6	Snake	Levey						
		3.45		466	251.0	River	Redd						
		4.20		496	256.7		Snake River Canyon		9.44A	12.51			
				719	269.1		Farrington Spectacular Devil's Canyon		9:03 A	12.13			
				888	277.5		Kahlotus Canyon		Lind				
				964	285.1		Sperry		8:37 A	11.54			
				1067	291.4		Washtucna		Ritzville	a 11.42			
				1246	299.8		Hooper		7:28 A	11.27			
				1468	311.2		Benge		Cheney				
				1590	317.4		Lantz		Stops				
				1706	323.4		Macall		No. 5	10.54			
				1826	329.4		Rockwell		N.P.Ry				



**SPOKANE, PORTLAND AND SEATTLE RAILWAY SYSTEM**

S. P. & S. RY.—OREGON TRUNK RY.—OREGON ELECTRIC RY.—(Subsidiaries of Northern Pacific and Great Northern Railways)



**PORTLAND - REDMOND - BEND TRAINS**

Read Down Read Up

No. 4 Daily	Miles	Spokane, Portland and Seattle Railway	Elevation	No. 3 Daily
8.45	0.0	Lv Portland	32	7.35
11.50	106.1	Ar Wishram	166	4.40

No. 102 Daily	Miles	Oregon Trunk Ry.	Elevation	No. 103 Daily
12.30	106.1	Lv Wishram	166	3.00
12.43	111.8	Moody	286	2.40
12.56	117.7	Kloan	328	2.25
1.10	124.1	Lockit	354	2.09
1.27	132.5	Dike	508	1.50
1.36	136.7	Sinamox	510	1.36
1.55	146.0	Oakbrook	606	1.15
2.11	153.8	Sherar	783	1.12
2.18	156.9	Tuskan	788	1.08
2.26	160.8	Maupin	852	1.27
2.48	169.9	Nena	960	1.02
2.57	173.6	Frieda	1012	1.11
3.12	179.7	Dant	1074	1.13
3.16	181.5	Davidson	1103	1.11
3.29	186.4	Kaskela	1202	1.11
3.41	191.9	South Jct.	1254	1.10
4.05	200.1	Gateway	1787	1.04
4.28	205.6	Paxton	2169	1.02
4.46	211.3	Madras	2458	1.01
4.58	216.3	Metolius	2517	0.95
5.09	221.0	Culver	2624	0.94
5.26	228.1	Opal City	2850	0.95
5.44	235.6	Terrebonne	2863	0.92
5.51	238.4	Prineville Jct.	2918	0.88
6.15	241.1	Redmond	2983	0.85
6.40	250.2	Deschutes	3572	0.81
7.00	257.6	Ar Bend	3618	8.00

**EQUIPMENT BETWEEN PORTLAND AND BEND**  
Trains Nos. 4-102 and 103-3 (N.A.C.). Coaches daily between Portland and Wishram and Wishram and Bend, A.C. observation cars daily between Portland and Wishram. See page 2.

**CONNECTION AT BEND FOR KLAMATH FALLS**  
See schedule of Great Northern Railway on page 5.

**LYLE - KLICKITAT - GOLDENDALE TRAINS**

No. 120 Daily ex. Sat.	Miles	S. P. & S. Ry.	Elevation	No. 121 Daily ex. Sat.
11.40	85.3	Lv Lyle	101	8.25
12.05	91.7	Wrights	288	7.05
12.20	95.6	Pitt	370	7.53
12.30	97.8	Lv Klickitat	440	7.43
12.45	102.2	Wahkiakus	500	7.32
1.10	115.6	Warwick	1546	6.51
2.00	120.6	Centerville	1586	6.35
2.25	126.9	Ar Goldendale	1610	6.15

Ex. Sat. daily except Saturdays.  
Ex. Sun. daily except Sunday.

**PACIFIC TRAILWAYS (Mt. Hood Stages, Inc.) (11-10-46)**

6	4	14	2	1	3	5
11.40	4.30	12.01	7.00	1.10	6.35	11.40
3.05	8.25	3.30	10.30	9.55	3.25	8.30
4.25	9.55	4.55	11.55	8.25	1.55	7.00
4.32	10.02	5.02	12.02	8.06	1.36	6.46
4.40	10.10	5.10	12.10	7.58	1.28	6.38
5.15	10.45	5.45	12.45	7.30	1.00	6.10
5.40	11.10	6.10	1.10	7.00	12.30	5.40

**FREIGHT SERVICE**

Route your freight shipments via the Spokane, Portland and Seattle Railway for fast and dependable service—between Portland, Astoria, Spokane, Yakima, Walla Walla, Pendleton, Lewiston, Bend and all points east and south.

**Let Us Handle Your Transportation Problems**

Light face figures denotes A. M. time. Bold face figures denote P. M. time. Ar. Arrive. Lv. Leave. / Stop on signal. † Telegraph office.

**PORTLAND - ST. HELENS**

**RAINIER - ASTORIA - CLATSOP BEACH TRAINS**

Westbound—Read Down Eastbound—Read Up

No. 21 Daily	Miles	S. P. & S. Ry. Pacific Time	No. 22 Daily
8.10	0.0	Lv PORTLAND, Union Sta.	6.45
8.26	7.3	Linnton	6.24
8.50	19.9	Scappoose	5.55
9.06	24.3	Warren	5.45
		ST. HELENS (Station)	5.38
9.11	30.0	Columbia City	5.31
9.18	33.2	Deer Island	5.25
9.31	39.4	Goble	5.11
9.37	42.2	Prescott	5.05
9.47	45.8	Ar RAINIER	4.57
10.35		Ar Longview	4.00
8.00		Lv By Direct Bus 30c	6.40
9.47	45.8	Lv RAINIER	4.57
10.12	55.8	Mayer	4.34
10.16	58.0	Loocda	4.30
10.31	59.3	Quincy	4.27
10.28	62.2	CLATSKANIE	4.21
10.38	66.6	Marshland	4.11
10.40	68.5	Woodson	4.07
10.49	71.2	Westport	4.01
10.55	73.5	Wauna	3.55
11.02	76.8	Bradwood	3.49
11.07	78.4	Clifton	3.45
11.18	83.3	Brownsmead	3.36
11.24	84.9	Blind Slough	3.32
11.28	86.5	Knappa	3.28
11.33	88.5	Ivy	3.23
11.37	90.2	Svensen	3.20
11.50	95.4	Van Dusen	3.10
12.05	99.7	Ar ASTORIA	3.00
12.10	99.7	Lv ASTORIA	2.48
12.11	100.3	11th Street, Astoria	2.46
12.29	105.6	Warrenton	2.30
12.36	108.3	Camp Clatsop	2.23
12.44	112.1	West Gearhart	2.14
12.52	115.7	Ar SEASIDE	2.05
1.00	118.0	Ar SEASIDE	2.00

**RESPONSIBILITY**

Not Responsible—The Spokane, Portland and Seattle Railway Company is not responsible for errors in time tables, inconvenience or damage resulting from delayed trains or failure to make connections; schedules herein are subject to change without notice.

**SHIP BY RAIL**



**CLATSOP BEACH SEASIDE - GEARHART PACIFIC OCEAN**  
ALL-YEAR SEASHORE RESORT  
Surrounded by evergreen forests and a background of mountains, Clatsop Beach has every facility for visitors—golf courses, fishing, amusement places, sea foods, pure water, good hotels, restaurants, cottages, and camps. Along the expanding Columbia River, from Portland to Astoria. Train schedules above.

**ONLY FREIGHT SERVICE** is operated on the following Branches of the Spokane, Portland and Seattle Railway and the Oregon Electric Railway.

**S. P. & S. Railway**

Miles	STATIONS	Miles	STATIONS
0	Portland	0	Wilkesboro
7.3	Linnton	12.9	Glenwood
11.7	Burlington		
15.5	Rockton		
17.1	Bowers Junction		
21.9	North Plains		
26.4	Wilkesboro		
27.5	Banks		
31.7	Manning		
43.1	Braun	0	Warrenton
48.5	Vernonia	1.8	Flavel
57.0	Keasey	3.8	Fort Stevens

**Oregon Electric Railway**

Miles	STATIONS	Miles	STATIONS
0	Portland	0	Forest Grove Jct
21.5	Forest Grove Jct	0.8	Orenco
27.6	Beaverton	4.5	Hillsboro
32.1	Tigard	7.9	Cornelius
36.1	Tualatin	10.6	Forest Grove
39.0	Tonquin		
43.0	Wilsonville	0	Albany Yard
49.1	Donald	4.5	Froman
57.4	St. Louis	6.7	Fry
63.1	Hopmere	8.4	Goltra
64.1	Quinaby	10.3	Tallman
71.2	Orville	14.1	Lebanon
79.9	Albany	15.9	Weldwood
96.5	Albany Yard	20.2	Waterloo
97.8	Albany	22.1	Nye
124.2	Harrisburg	28.8	Sweet Home
128.7	Junction City	31.2	Foster
142.8	Eugene	0	Sweet Home
		6.4	Holley
		8.1	Calapooya
		10.5	Ryan
		11.8	Mitchell
		15.5	Dollar

**SHIP BY RAIL**

**SAFETY FIRST—friendliness too!**

**SPOKANE, PORTLAND AND SEATTLE RAILWAY SYSTEM**

S. P. & S. RY.—OREGON TRUNK RY.—OREGON ELECTRIC RY.—(Subsidiaries of Great Northern and Northern Pacific Railways)



**PORTLAND - PUGET SOUND - BRITISH COLUMBIA**

NORTHERN PAC. RY. - GREAT NORTHERN RY. - UNION PAC. R. R.

Northbound—Read Down				Southbound—Read Up			
401 Daily	459 Daily	407 Daily	457 Daily	460 Daily	408 Daily	458 Daily	402 Daily
11.30	4.00	12.01	8.30	Lv Portland, Un. Sta.	2.20	4.35	6.45
12.05	4.25	12.25	8.58	Lv Vancouver, Wn. Ar	1.45	4.06	6.15
12.57			9.37	Ar Kalama	12.56		4.55
1.30	5.13	1.11	9.58	Ar Kelso-Longview	12.36	3.17	7.29
1.48			10.13	Ar Castle Rock	12.17		4.35
2.45	6.06	2.00	11.08	Ar Chehalis	11.26	2.24	6.35
3.10	6.21	2.10	11.15	Ar Centralia	11.15	2.17	6.26
			12.08	Ar South Bend			3.15
			11.53	Ar East Olympia		1.47	5.55
5.00	7.40	3.25	12.50	Ar Tacoma	9.40	12.57	6.05
a 1.30				Ar Aberdeen			a 3.00
k 6.45	k 9.00	k 4.35	u 2.15	Ar Seattle	k 8.20	k 12.01	u 3.50
7.15	9.30	5.00	8.15	Lv Seattle	8.00	9.30	12.45
8.38	10.34	6.00	9.12	Ar Everett	6.55	8.30	11.47
11.01		7.48	11.01	Ar Bellingham		6.48	10.03
1.15		9.30	12.45	Ar Vancouver, B. C.		6.00	8.10

† Daily except Sunday. a Bus daily b To and from Olympia by bus. k King Street Station. p Stops from Portland and beyond. u Union Sta.

**CONNECTIONS AT SPOKANE AND PASCO**

Bus Dly	Bus Dly	Great Northern Ry.	Bus Dly	Bus Dly	2 Dly	SPOKANE INT'L.-CAN. PACIFIC	3 Dly
5.30	8.15	Lv Spokane	2.55	6.45	3.00	Lv Portland	7.35
6.10	8.52	Ar Deer Park	2.10	6.05	10.55	Ar Spokane	9.45
7.15	9.50	Chewelah	1.05	6.05	11.59	Lv Spokane (S.P.Ry.)	12.15
7.55	10.25	Colville	12.30	4.30	4.53	Ar Macleod (C.P.R.)	11.20
8.15	10.50	Kettle Falls	12.10	3.55	6.10	Ar Lethbridge	9.45
						Ar Calgary	7.25
						Ar Edmonton	12.30
						Ar Medicine Hat	6.00
						Ar Moose Jaw	8.45
						Ar Regina	7.05
						Ar Winnipeg	9.00

4-6 Dly	6-4 Dly	Northern Pacific East of Pasco	5-5 Dly	3-3 Dly	4-347 Dly	Northern Pacific Walla Walla	348-3 Dly
8.45	9.00	Lv Portland	4.40	7.35		Lv Portland	7.35
2.40	3.45	Ar Pasco	10.40	1.50		Ar Pasco	1.50
3.00	4.35	Lv Pasco	10.30	10.35			
	5.23	Connell	9.44	9.44			
	6.16	Lind	9.03	8.58			
	5.15	Ritzville	8.37	8.30			
	6.44	Sprague	8.03	7.55			
	6.33	Ar Cheney	7.28	7.18			

**GREAT NORTHERN RY. BEND, KLAMATH FALLS, BIEBER**

6-313 Daily	4-311 Daily	NORTHERN PACIFIC	312-3 Daily	314-3 Daily
9.00	8.45	Lv Portland	7.35	7.35
8.20	8.15	Ar Spokane	9.00	9.00
9.45	8.50	Lv Spokane	1.00	8.10
10.01	9.05	Marshall	12.41	12.41
10.45	9.46	Rosalia	11.55	11.55
11.06	10.05	Oakesdale	11.35	6.54
11.33	10.31	Garfield	11.13	6.33
11.53	10.55	Palouse	10.55	6.12
12.31	11.36	Pullman	10.20	5.40
12.50	11.56	Moscow	9.58	5.15
1.55	12.50	Kendrick	8.58	4.13
2.04	12.56	Julietta	8.50	4.05





# SPOKANE, PORTLAND AND SEATTLE RAILWAY SYSTEM

S. P. & S. RY.—OREGON TRUNK RY.—OREGON ELECTRIC RY.—(Subsidiaries of Northern Pacific and Great Northern Railways)



Tower Falls, near the lower end of the Grand Canyon, drop from a spectacular group of rocky needles. Yellowstone National Park.—Northern Pacific Railway.



28 passengers can be accommodated in the coach section of the new buffet-lounge coach and 48 passengers in the other post-war coaches now in service on the North Coast Limited. These are the comfortable "Sleepy Hollow" seats with leg rest for reclining position.—Northern Pacific Railway.

## Protect Your Luggage

Ask for Identification Label at Ticket Offices or Baggage Counters and paste in or outside your baggage.

Help us help you in locating your baggage if it becomes misplaced.

## WESTERN UNION TELEGRAMS

may be sent from any telegraph station. Domestic Service: Full Rate Telegrams (fast service at reasonable rates). Day letters (inexpensive deferred service). Night letters (overnight service at reduced rates). The porter will send your telegram or cablegram from the next Western Union Station.

THE WESTERN UNION TELEGRAPH COMPANY HANDLES MESSAGES AT PUBLIC TELEGRAPH OFFICES ON THIS RAILROAD

## SHIP and TRAVEL BY TRAIN



SEND YOUR SHIPMENTS

THE RAILROAD WAY!

Railway Express moves swiftly on America's finest trains. For prompt, efficient shipping service, specify "Via Railway Express!"

**RAILWAY EXPRESS**  
AGENCY INC.

NATION-WIDE SERVICE



# SPOKANE, PORTLAND AND SEATTLE RAILWAY SYSTEM

S. P. & S. RY.—OREGON TRUNK RY.—OREGON ELECTRIC RY.—(Subsidiaries of Northern Pacific and Great Northern Railways)



A leg rest adds to the travel ease of coach passengers on the Empire Builder, new Great Northern streamlined train.—Great Northern Railway.



Upper end of St. Mary's Lake, Glacier National Park.—Great Northern Railway.

## 66 Railroads Offer NEW CHARGE-IT SERVICE

On One Rail Travel Card

To make rail travel more convenient, the SPOKANE, PORTLAND and SEATTLE RAILWAY COMPANY joins 65 other leading railroads to offer this new Charge-it Plan.

Travelers using this plan carry just one card, issued by the Rail Travel Credit Agency. Ticket offices of all participating railroads will honor these cards for any travel originating on their lines — for rail, parlor or sleeping car tickets, meal service in dining cars, as well as for baggage charges.

Any company or individual with proper credit rating can use this plan. No deposit, no service charge.

For further information, write

H. W. SHIELDS  
General Passenger Agent  
S. P. & S. RY. CO.

or

H. W. SIDDALL, Chairman  
RAIL TRAVEL CREDIT AGENCY  
Room 436 Union Station  
Chicago 6, Illinois

## NOW...

You can take that long-delayed vacation trip to Sunny California and enjoy the restful beaches which abound there.

Golf - Swim. Get back that youthful vigor and return to work completely refreshed.

Trains leave Spokane Daily 12:06 AM and 9:45 PM from GN Station, 7:00 AM from N. P. Station making direct connections at Portland with fast S. P. Co. trains. (See Schedules on page 6.)



Contact any agent or representative on page 10 who will be glad to assist you in any way regarding this or other trips.





# SPOKANE, PORTLAND AND SEATTLE RAILWAY SYSTEM

S. P. & S. RY.—OREGON TRUNK RY.—OREGON ELECTRIC RY.—(Subsidiaries of Northern Pacific and Great Northern Railways)

## Sleeping, Parlor Car and Reserved Seat Fares

Federal Tax Extra

For information only. Subject to change without notice.

BETWEEN AND	PORTLAND		SPOKANE		BETWEEN AND	PORTLAND		SPOKANE			
	Seat	Stand-ard	Stand-ard	Tour-ist		Seat	Stand-ard	Stand-ard	Tour-ist		
Billings.....Mont.		\$ 8.45	\$ 5.65	\$ 5.25	\$ 3.55	Medford.....Ore.	\$ 2.95	\$ 2.00	\$ 6.40	\$ 4.30	
Bingen-W.H.Salmon,Wn.	*.20			2.95	2.00	Minneapolis.....Minn.	15.35	10.25	12.75	8.50	
Boston.....Mass.		25.15		22.30		Missoula.....Mont.	5.80	3.85	2.95	2.00	
Boseman.....Mont.		7.55	5.10	4.35	2.95	New Orleans.....La.	21.95		20.25		
Buffalo.....N. Y.		22.30		19.65		New York.....N. Y.	25.15		22.30		
Butte.....Mont.		6.70	4.50	3.50	2.35	Oakland.....Calif.	6.40	4.30	9.85	6.60	
Camas.....Wash.	*.15			3.20	2.15	Omaha.....Neb.	15.35		12.75		
Chicago.....Ill.		18.25	12.20	15.35	10.25	Pasco.....Wash.	2.95	2.00	2.35	1.55	
Cincinnati.....Ohio		20.25		17.35		Philadelphia.....Pa.	24.30		21.70		
Cleveland.....Ohio		20.80		18.25		Pittsburgh.....Pa.	21.70		18.85		
Denver.....Colo.		12.20		11.30		Portland.....Ore.			3.50	2.35	
Detroit.....Mich.		20.25		17.35		Roseburg.....Ore.	2.65	1.80	5.25	3.55	
Duluth.....Minn.		15.35	10.25	12.75	8.50	St. Louis.....Mo.	17.35		14.75		
Eugene.....Ore.	.80		2.35	1.55	4.65	3.10	St. Paul.....Minn.	15.35	10.25	12.75	8.50
Fargo.....N. D.		13.60	9.10	10.40	6.95	Sacramento.....Calif.	6.15	4.10	9.60	6.40	
Gardiner.....Mont.		8.10		4.95		San Antonio.....Texas	20.00	13.35			
Glacier Park.....Mont.		6.40	4.30	3.20	2.15	San Francisco.....Calif.	6.40	4.30	9.85	6.60	
Grants Pass.....Ore.		2.95	2.00	6.15	4.10	Seattle.....Wash.	1.20	2.95	2.00	3.50	
Great Falls.....Mont.		8.10		4.65		Spokane.....Wash.	*.50	3.50	2.35		
Havre.....Mont.		8.10	5.40	4.95	3.30	Stevenson.....Wash.	*.20		2.95	2.00	
Helena.....Mont.		6.70	4.50	3.50	2.35	Tacoma.....Wash.	.90	2.95	2.00	3.50	
Kansas City.....Mo.		15.35		13.35		Vancouver.....Wash.	*.15		3.50	2.35	
Klamath Falls.....Ore.	1.90		2.95	2.00	6.40	Washington.....D. C.	24.30		21.70		
Livingston.....Mont.		7.85	5.25	4.65	3.10	Wishram.....Wash.	*.25		2.95	2.00	
Los Angeles.....Calif.		9.60	6.40	13.05	8.70						
Louisville.....Ky.		20.25		17.35							
Lyle.....Wash.	*.20			2.95	2.00						

\*Reserved Seat Coach fares on day trains.

### RATES FOR UPPER BERTH, DUPLEX ROOMETTE, BEDROOM,

### COMPARTMENT AND DRAWING ROOM IN STANDARD SLEEPING CARS

Where Lower Berth Is	Upper Berth Is	Duplex Roomette	BEDROOM				Bedroom Suite				Compartment		Drawing Room		Where Lower Berth Is	Upper Berth Is
			For One Person	For Two Persons	For Two Persons	For Three Persons	For One Person	For Two Persons	For One Person	For Two Persons	For One Person	For Two Persons				
\$2.35	\$1.80	\$2.60	\$4.20	\$4.65	\$8.10	\$8.10	\$4.65	\$6.95	\$5.80	\$8.10	2.55	1.80	2.15	1.65	2.35	1.80
2.95	2.20	3.25	5.25	5.80	10.40	10.40	5.80	8.10	7.30	10.40	2.75	2.10	2.45	1.85	2.95	2.20
3.50	2.65	3.85	6.30	6.95	12.55	12.55	6.95	9.85	8.70	12.75	3.10	2.40	3.50	2.65	3.10	2.40
4.10	3.10	4.55	7.35	8.10	14.65	15.05	8.10	11.55	10.15	15.05	3.30	2.55	4.35	3.30	3.55	2.65
4.65	3.30	4.80	7.85	8.70	15.65	16.20	8.70	12.20	11.00	16.20	3.70	2.85	4.95	3.75	3.85	3.00
5.25	3.55	5.15	8.40	9.25	16.20	16.20	9.25	13.35	11.55	16.20	4.10	3.10	5.50	4.00	4.10	3.10
5.80	4.40	6.40	10.40	11.55	20.80	20.80	11.55	16.20	14.50	20.80	4.30	3.25	6.95	4.30	4.50	3.45
6.15	4.65	6.80	10.95	12.20	21.90	21.95	12.20	17.35	15.35	21.95	4.65	3.55	7.55	4.65	4.85	3.70
6.40	4.85	7.05	11.45	12.75	22.90	23.10	12.75	17.95	15.90	23.10	5.10	3.85	8.15	5.10	5.25	4.00
6.70	5.10	7.40	12.00	13.35	24.00	24.30	13.35	19.10	16.80	24.30	5.25	4.15	8.45	5.40	5.65	4.30
6.95	5.30	7.65	12.50	13.90	24.30	24.30	13.90	19.65	17.35	24.30	5.40	4.30	8.75	5.65	5.85	4.45
7.55	5.75	8.35	13.55	15.05	26.60	26.60	15.05	21.40	18.85	26.60	6.00	4.60	9.25	6.00	6.20	4.75
7.85	5.95	8.65	14.10	15.65	27.75	27.75	15.65	21.95	19.65	27.75	6.40	4.85	9.60	6.40	6.60	5.05
8.10	6.20	8.95	14.60	16.20	28.90	28.90	16.20	23.10	20.25	28.90	6.80	5.20	10.00	6.80	7.05	5.30
8.45	6.40	9.30	15.15	16.80	30.05	30.05	16.80	23.75	21.15	30.05	7.40	5.65	10.35	7.40	7.65	5.65
8.70	6.60	9.60	15.65	17.35	31.20	31.20	17.35	24.30	21.70	31.20	7.55	5.75	10.65	7.55	7.75	5.75
9.25	7.05	10.20	16.70	18.50	32.35	32.35	18.50	26.05	23.10	32.35	8.15	6.05	11.05	8.15	8.30	6.05
9.60	7.30	10.60	17.20	19.10	33.50	33.50	19.10	27.20	24.00	33.50	8.50	6.60	11.40	8.50	8.70	6.60
9.85	7.50	10.85	17.75	19.65	34.65	34.65	19.65	27.75	24.60	34.65	9.25	7.05	11.75	9.25	9.45	7.05
10.40	7.95	11.45	18.80	20.80	37.00	37.00	20.80	29.50	26.05	37.00	9.50	7.25	12.05	9.50	9.70	7.25
10.75	8.15	11.85	19.25	21.40	38.15	38.15	21.40	30.05	26.90	38.15	9.70	7.40	12.35	9.70	9.90	7.40
11.00	8.40	12.10	19.80	21.95	39.30	39.30	21.95	31.20	27.45	39.30	10.25	7.85	12.65	10.25	10.45	7.85
11.30	8.60	12.45	20.30	22.55	40.45	40.45	22.55	31.80	28.35	40.45	10.50	8.10	12.95	10.50	11.15	8.10
11.55	8.80	12.75	20.80	23.10	40.45	40.45	23.10	32.35	28.90	40.45	10.75	8.30	13.25	10.75	11.40	8.30
11.90	9.05	13.10	21.35	23.75	41.60	41.60	23.75	33.50	29.80	41.60	11.00	8.55	13.55	11.00	11.65	8.55
12.20	9.25	13.45	21.85	24.30	42.75	42.75	24.30	34.10	30.40	42.75	11.25	8.80	13.85	11.25	11.90	8.80
12.75	9.70	14.05	22.90	25.45	45.05	45.05	25.45	34.85	31.80	45.05	11.50	9.05	14.15	11.50	12.15	9.05
13.35	10.15	14.70	23.95	26.60	47.40	47.40	26.60	37.60	33.25	47.40	11.75	9.30	14.45	11.75	12.40	9.30
13.60	10.35	15.00	24.50	27.20	48.55	48.55	27.20	38.15	34.10	48.55	12.00	9.55	14.75	12.00	12.65	9.55
13.90	10.60	15.30	25.00	27.75	48.55	48.55	27.75	39.30	34.65	48.55	12.25	9.80	15.05	12.25	12.90	9.80
15.35	11.70	16.90	27.60	30.65	54.30	54.30	30.65	43.35	38.45	54.30	12.50	10.05	15.35	12.50	13.15	10.05
15.65	11.90	17.25	28.15	31.20	55.45	55.45	31.20	43.90	39.00	55.45	12.75	10.30	15.65	12.75	13.40	10.30
16.50	12.55	18.15	29.65	32.95	57.75	57.75	32.95	46.20	41.35	57.75	13.00	10.55	15.95	13.00	13.65	10.55
16.80	12.80	18.50	30.20	33.50	58.95	58.95	33.50	47.40	41.95	58.95	13.25	10.80	16.25	13.25	13.90	10.80
17.35	13.20	19.10	31.20	34.65	61.25	61.25	34.65	48.55	43.35	61.25	13.50	11.05	16.55	13.50	14.15	11.05
18.25	13.90	20.10	32.80	36.45	64.70	64.70	36.45	51.45	45.65	64.70	13.75	11.30	16.85	13.75	14.40	11.30
20.80	15.85	22.90	37.50	41.60	72.80	72.80	41.60	58.40	52.00	72.80	14.00	11.55	17.15	14.00	14.65	11.55
											12.20	9.25				

## INDUSTRIAL LOCATIONS

Served by the SP&S RAILWAY SYSTEM in Oregon and Washington are many excellent industrial and warehouse sites for those seeking new locations. Abundant raw materials are available for many types of manufacturing and processing. Ocean going ships dock at many locations for a distance of 100 miles along the Columbia and Willamette rivers which are paralleled by rails of the SP&S Railway System.

Contact our Industrial Department for information covering your requirements.

**KENNETH C. MILLER**  
General Industrial and Agricultural Agent  
American Bank Building  
Portland 7, Oregon

Through sleeping cars not operated in all trains; fare applies for continuous trip via direct connections. A compartment is a private room with lower and upper berths and toilet; a drawing room has a divan berth in addition.

Exclusive occupancy of a drawing room requires 1 1/2 adult rail tickets, or their equivalent; for compartment, duplex-roomette, single or double bedroom, one such ticket between S. P. & S. - N. P. - G. N. and connections; 1-1/10 tickets between certain other lines; for section, one such ticket for each berth.

**BAGGAGE IN SLEEPING CARS.**—Hand baggage in sleeping cars is restricted to what may conveniently be placed in berth or at seat occupied by passengers. All baggage should be marked with name and permanent address of owner. Ask ticket or baggage agent for address poster.

# SPOKANE, PORTLAND AND SEATTLE RAILWAY SYSTEM

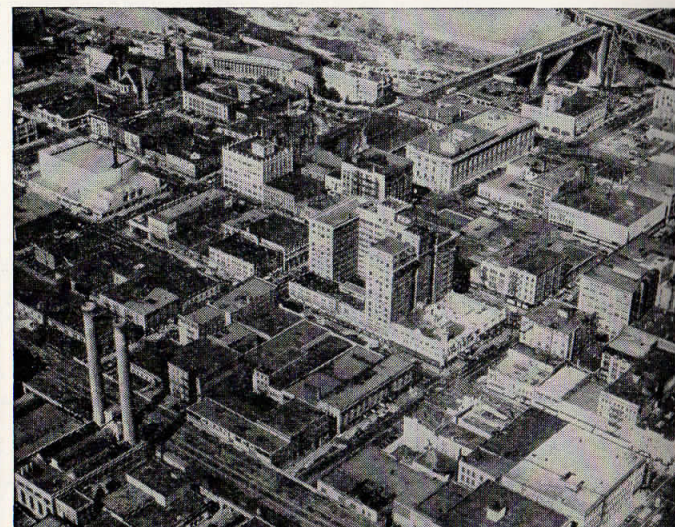
S. P. & S. RY.—OREGON TRUNK RY.—OREGON ELECTRIC RY.—(Subsidiaries of Great Northern and Northern Pacific Railways)



Portland—the Rose City



Vital Link Between  
**SPOKANE, PORTLAND & CALIFORNIA**  
Portland, Pasco, Spokane and East



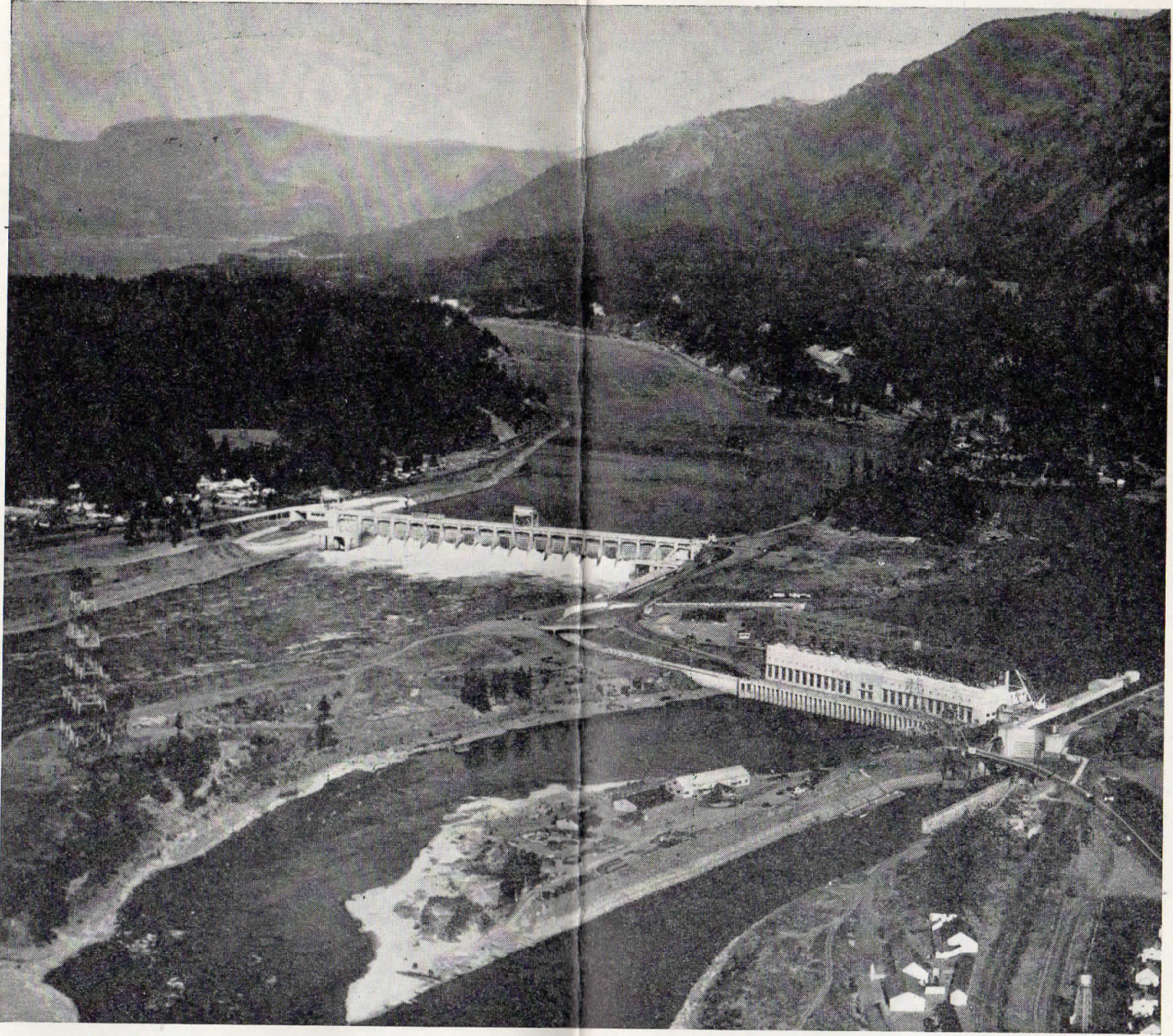
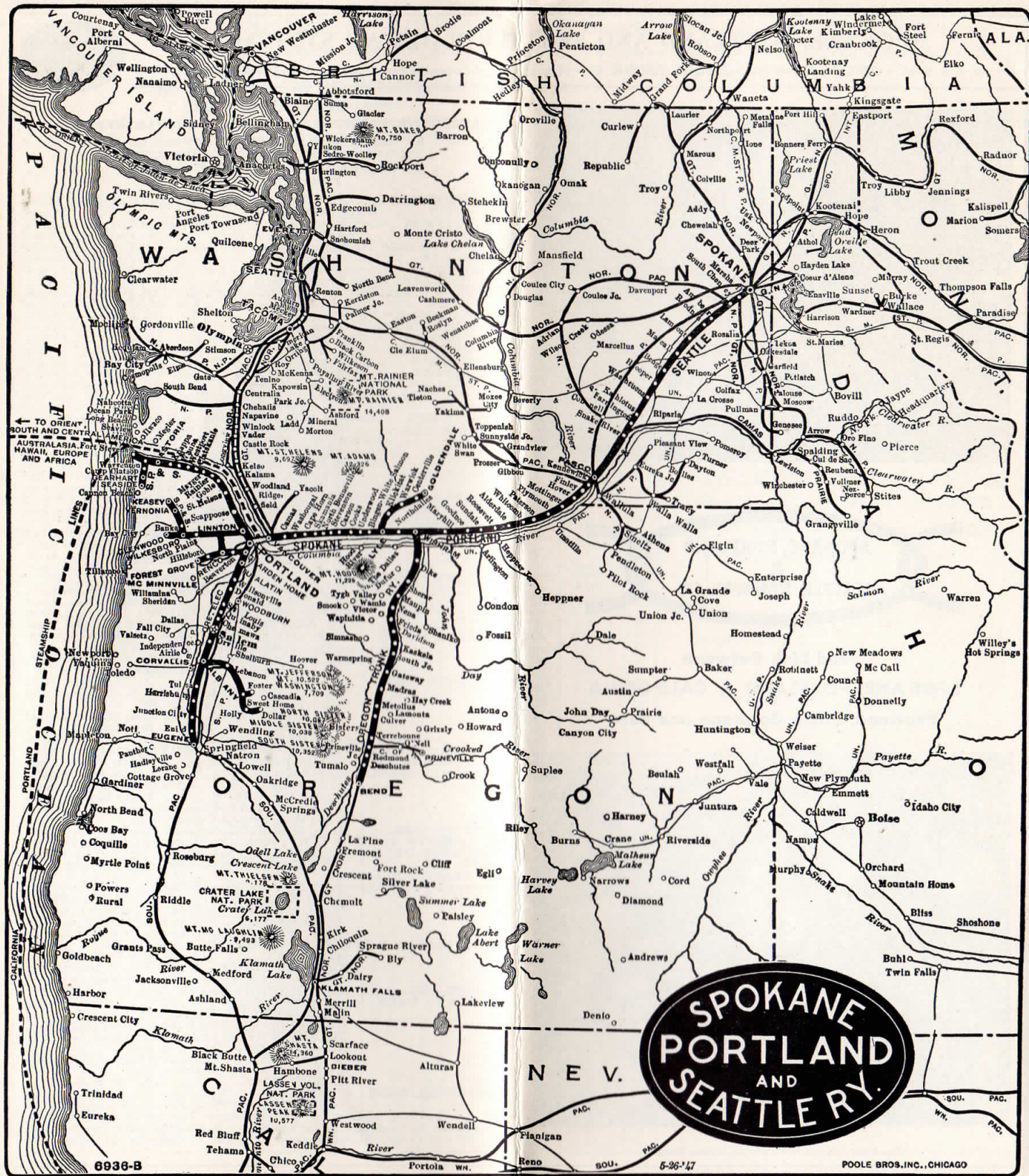
Spokane—Queen City of the Inland Empire

### GENERAL OFFICES

EXECUTIVE, TRAFFIC AND PURCHASING DEPARTMENTS  
American Bank Building, 621 S. W. Morrison Street  
ACCOUNTING AND OPERATING DEPARTMENTS  
N. W. Eleventh Avenue and N. W. Hoyt Streets  
PORTLAND, OREGON

- |   |                    |
|---|--------------------|
| C. E. DENNEY.....President.....                                 | St. Paul 1, Minn.  |
| F. J. GAVIN.....Vice-President.....                             | St. Paul 1, Minn.  |
| E. B. STANTON.....Vice-President and General Manager.....       | Portland 7, Oregon |
| A. J. HUNT.....Asst. to the Gen. Mgr.....                       | Portland 7, Oregon |
| E. H. SHOWALTER.....Superintendent.....                         | Portland 7, Oregon |
| J. C. MOORE.....Traffic Manager.....                            | Portland 7, Oregon |
| H. W. SHIELDS.....General Passenger Agent.....                  | Portland 7, Oregon |
| GEO. F. EHLEN.....General Freight Agent.....                    | Portland 7, Oregon |
| KENNETH C. MILLER.....Gen. Industrial and Agricultural Agt..... | Portland 7, Oregon |
| L. S. DAVIS.....Asst. to the Gen. Frt. & Pass. Agt.....         | Portland 7, Oregon |
| ROBT. CROSBIE.....Comptroller.....                              | Portland 7, Oregon |
| L. W. ALBERTSON.....Assistant Comptroller.....                  |                    |





Bonneville Dam, adjacent to North Bonneville, Washington, 49 miles east of Portland, Oregon on the main line of the Spokane, Portland and Seattle Railway.

This dam, which is one of the government's greatest power-navigation projects, was built at a cost exceeding \$81,386,000.00. A wonderful view of this great work of engineering and the surrounding mountains ranging in altitude from 2,000 to 5,000 feet, may be seen from the trains of the S. P. & S. Railway.