





# SPOKANE, PORTLAND AND SEATTLE RAILWAY SYSTEM

## OREGON TRUNK RY.

Pacific Standard Time

### PORTLAND - WISHRAM - PASCO - SPOKANE TRAINS

Eastbound, Read Down				Westbound, Read Up				
No. 2 Daily	No. 2 Daily	No. 4 Daily	El. va. Miles	Spokane, Portland and Seattle Railway May 26, 1946	No. 3 Daily	No. 1 Daily	No. 1 Daily	
<b>SPECIAL STOPS</b>								
No. 1. At any station to discharge revenue passengers from east of Spokane.	8.45	8.45	9.00	32 0.0	Lv. PORTLAND ("City of Roses")	4.40	7.35	7.35
At any station west of Pasco to discharge revenue passengers from Spokane.	9.15	9.15	9.35	46 10.0	Lv. VANCOUVER (founded 1825)	4.10	7.05	7.05
At any station east of Pasco to receive revenue passengers for Vancouver and Portland.	10.53	10.53	11.35	101 75.6	Lv. WISHRAM (Mt. Hood visible)	1.29	4.25	4.25
At any station west of Pasco to receive passengers for Spokane.	11.18	11.18	11.55	101 75.6	Lv. PASCO	10.30	1.35	12.38
At any station east of Pasco to discharge passengers from Portland or Vancouver.	4.22	4.22	4.35	358 231.3	Lv. LEVY	8.25	8.25	8.25
Stops to receive passengers made only upon advance arrangements through Agent.	7.25	6.50	8.20	1920 377.5	Lv. NOR. PAC. STATION (business capital)	7.00		9.18
Stops to discharge passengers made upon application to conductor.				1871 379.5	Lv. GREAT NO. STATION (of Inland Empire)			

### PORTLAND - REDMOND - BEND TRAINS

Read Down		May 26, 1946		Read Up	
No. 2 Daily	Miles	Spokane, Portland and Seattle Railway	Elevation	No. 1 Daily	No. 103 Daily
8.45	0.0	Lv. PORTLAND	32	7.35	
No. 102 Daily		Oregon Trunk Ry.			
12.30	106.1	Lv. WISHRAM	166	3.00	
12.43	111.8	Moody	286	2.40	
12.56	117.7	Kloan	328	2.25	
1.10	124.1	Lockit	354	2.09	
1.27	132.5	Dike	508	1.50	
1.36	136.7	Sinamox	510	1.36	
1.55	146.0	Oakbrook	606	1.15	
2.11	153.8	Sherar	783	1.28	
2.17	156.9	Tuskana	798	1.38	
2.25	160.8	Maupin	852	1.27	
2.48	169.9	Nena	960	12.01	
2.57	173.6	Frieda	1012	11.51	
3.12	179.7	Dant	1074	11.36	
3.17	181.5	Davidson	1102	11.31	
3.30	186.4	Kaskela	1203	11.18	
3.41	191.9	South Jet	1254	11.03	
4.05	200.1	Gateway	1787	10.41	
4.28	205.6	Paxton	2169	10.26	
4.46	211.3	Madras	2458	10.10	
4.55	216.3	Metolius	2517	9.55	
5.08	221.0	Culver	2624	9.43	
5.32	228.1	Opal City	2850	9.25	
5.57	235.6	Terrebonne	2863	9.05	
6.06	238.4	Prineville Jet	2918	8.58	
6.15	241.1	Redmond	2983	8.50	
6.40	250.2	Deschutes	3572	8.15	
7.00	257.6	Ar. BEND	3618	8.00	

**EQUIPMENT BETWEEN PORTLAND and BEND**  
Trains Nos. 2-102 and 1-103, (N.A.C.). Coaches daily between Portland and Wishram and Wishram and Bend, observation cars daily between Portland and Wishram, A.C. See page 3.

**CONNECTION AT BEND FOR KLAMATH FALLS**  
See schedule of Great Northern Railway on page 9.

### LYLE - KLICKITAT - GOLDENDALE TRAINS

No. 120 Daily ex. Sat.	Miles	S. P. & S. Ry. May 26, 1946	Elevation	No. 121 Daily ex. Sat.
11.40	85.3	Lv. Lyle	101	8.25
12.05	91.7	Wrights	288	8.05
12.20	95.6	Pitt	370	7.53
12.30	97.8	Lv. Klickitat	440	7.43
12.45	102.2	Wahkiakus	500	7.32
1.40	115.6	Warwick	1546	6.51
2.00	120.6	Centerville	1586	6.35
2.25	126.9	Ar. Goldendale	1610	6.15

Ex. Sat. denotes daily except Saturdays.  
Ex. Sun. denotes daily except Sunday.  
Equipment, coaches.

**SAFETY FIRST—**  
*friendliness too!*

### EQUIPMENT—BETWEEN PORTLAND, PASCO AND SPOKANE

**Over-Night Limited.** Trains Nos. 1 and 2. All regularly assigned equipment is air-conditioned. 8 section. Buffet Lounge S.P. & S. (Car-10); 8 section, 1 drawing room, 2 compartments (G.N. P-6); 10 section, 1 drawing room, 1 compartment, (N.P. P-40); 16 Section (P-N and P-J) tourist sleeping cars and coaches with lounges for women and men, and individual, reclining seats. N. A. C. coach between Portland and Wishram and Wishram and Bend. Dining car Wishram to Portland.

**Columbia River Express.** Day Trains Nos. 3 and 4. Air-conditioned observation reserved seat coaches, cafe meal service between Portland and Pasco, and A. C. equipment of similar character on connecting trains of Nor. Pac. Ry. between Pasco and Spokane, with reserved seat tickets issued locally, and between points east and west of Pasco, seat fare Portland-Spokane, 50c, plus tax. Non air-conditioned coaches between Portland and Pasco via S.P. & S., and air-conditioned Pasco to St. Paul via N.P.

For Special Stops on Nos. 1 and 2. See left column, page 3, and under "References" below.

- a Will stop to discharge revenue passengers from Spokane.
- b Will stop on signal to receive revenue passengers for Bingen-White Salmon, Vancouver and Portland.
- c Will stop on signal to receive revenue passengers for Vancouver and Portland.
- f Stop on signal.
- g Will stop on signal to discharge revenue passengers from Portland and Vancouver.
- h Will stop to discharge revenue passengers from Portland, Vancouver and Bingen-White Salmon.
- k Stops daily except Sunday.
- m Stops to receive or discharge revenue Passengers to or from Pasco and East.
- t Telegraph stations. N.A.C. Non air-conditioned. A.C. Air conditioned.

Light face figures denote A. M. time.

Bold face figures denote P. M. time.

Ar. Arrive. Lv. Leave.

f Stop on signal.

# SPOKANE, PORTLAND AND SEATTLE RAILWAY SYSTEM



### PORTLAND - ST. HELENS RAINIER - ASTORIA - CLATSOP BEACH TRAINS

Westbound—Read Down		Eastbound—Read Up	
No. 21 Daily	Miles	S. P. & S. Ry. Pacific Time May 26, 1946	No. 22 Daily
8.00	0.0	Lv. PORTLAND, Union Sta.	6.45
8.16	7.3	Linnton	6.24
8.45	19.9	Scappoose	5.55
8.54	24.3	Warren	5.45
9.03	27.6	ST. HELENS (Station)	5.38
9.09	30.0	Columbia City	5.31
9.18	33.2	Deer Island	5.25
9.31	39.4	Goble	5.11
9.37	42.2	Prescott	5.05
9.47	45.8	Ar. RAINIER	4.57
10.35		Ar. Longview	4.00
8.00		Lv. By Direct Bus 30c	6.40
9.47	45.8	Lv. RAINIER	4.57
10.12	55.8	Mayer	4.34
10.16	58.0	Locoda	4.30
10.20	59.3	Quincy	4.27
10.28	62.2	CLATSkanie	4.21
10.38	66.6	Marshland	4.11
10.40	68.5	Woodson	4.07
10.49	71.2	Westport	4.01
10.55	73.5	Wauna	3.55
11.02	76.8	Bradwood	3.49
11.07	78.4	Clifton	3.45
11.18	83.3	Brownmead	3.36
11.24	84.9	Blind Slough	3.32
11.28	86.5	Knappa	3.28
11.33	88.5	Ivy	3.23
11.37	90.2	Svensen	3.20
11.50	95.4	Van Dusen	3.19
12.05	99.7	Ar. ASTORIA	3.00
12.10	99.7	Lv. ASTORIA	2.48
12.11	100.3	11th Street, Astoria	2.46
12.29	105.6	Warrenton	2.30
12.36	108.3	Camp Clatsop	2.23
12.44	112.1	West	2.14
12.52	115.7	Gearhart	2.05
1.00	118.0	Ar. SEASIDE	2.00

### TRAIN EQUIPMENT

Nos 21 and 22, carry coaches and observation-reserved seat coach; seat fare 30c (plus tax). Also meal service between Portland, Astoria, Gearhart and Seaside.

### PACIFIC TRAILWAYS (Mt. Hood Stages, Inc.) (7-1-46)

No. 21 Daily	No. 22 Daily	Time	Station	Time	Station	Time	Station
11.30	11.30	12.01	Lv. PORTLAND	1.10	6.50	11.40	5.10
2.45	8.20	3.25	" Maupin	9.55	3.40	8.30	1.55
4.15	9.50	4.55	" Madras	8.25	2.10	7.00	12.30
4.22	9.57	5.02	" Metolius	8.06	1.51	6.46	12.21
4.30	10.05	5.10	" Culver	7.58	1.43	6.38	12.13
4.45	10.40	5.45	" Redmond	7.30	1.15	6.10	11.45
5.30	11.05	6.10	Ar. BEND	7.00	12.45	5.40	11.15



**CLATSOP BEACH**  
**SEASIDE - GEARHART**  
**PACIFIC OCEAN**

### ALL-YEAR SEASHORE RESORT

Surrounded by evergreen forests and a background of mountains, Clatsop Beach has every facility for visitors—golf courses, fishing, amusement places, sea foods, pure water, good hotels, restaurants, cottages, and camps. Along the expanding Columbia River, from Portland to Astoria. Train schedules page 5.

Light face figures denotes A. M. time.

Bold face figures denote P. M. time.

Ar. Arrive. Lv. Leave

f Stop on signal. t Telegraph office.

**ONLY FREIGHT SERVICE** is operated on the following Branches of the Spokane, Portland and Seattle Railway and the Oregon Electric Railway.

### S. P. & S. Railway

Miles	STATIONS
0	Portland
7.3	Linnton
11.7	Burlington
15.5	Rockton
17.1	Bowers Junction
21.9	North Plains
26.4	Wilkesboro
27.5	Banks
31.7	Manning
43.1	Braun
48.5	Vernonia
57.0	Keasey

### GLENGOOD BRANCH

Miles	STATIONS
0	Wilkesboro
12.9	Glengood

### FORT STEVENS BRANCH

Miles	STATIONS
0	Warrenton
1.8	Fry
3.8	Fort Stevens

### RESPONSIBILITY

Not Responsible—The Spokane, Portland and Seattle Railway Company is not responsible for errors in time tables, inconvenience or damage resulting from delayed trains or failure to make connections; schedules herein are subject to change without notice.



*Golf and Swim. Get back that youthful vigor and return to work completely refreshed.*



Trains leave Spokane Daily 9:45 PM from G.N. Station 7:00 AM from N.P. Station making direct connections at Portland with fast S. P. Co. trains. (Schedules p. 8.)

Contact any agent or representative on page 12 who will be glad to assist you in any way regarding this or other trips.

### FREIGHT SERVICE

Route your freight shipments via the Spokane, Portland and Seattle Railway for fast and dependable service—between Portland, Astoria, Spokane, Yakima, Walla Walla, Pendleton, Lewiston, Bend and all points east and south.

Let Us Handle Your Transportation Problems



# SPOKANE, PORTLAND AND SEATTLE RAILWAY SYSTEM

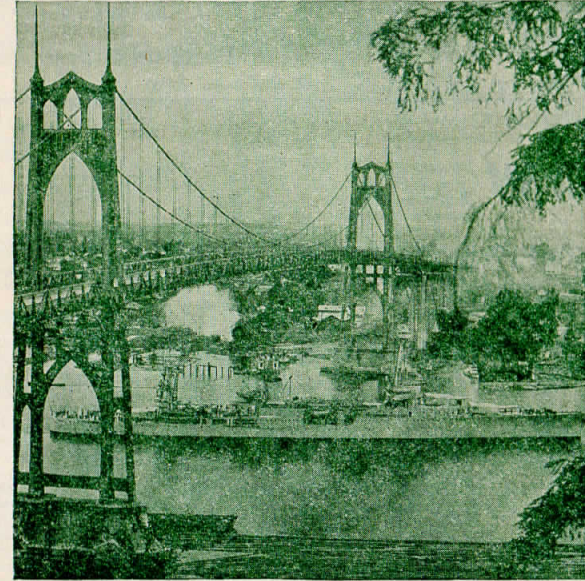
## CONNECTIONS AT PORTLAND

### PORTLAND - PUGET SOUND - BRITISH COLUMBIA

#### NORTHERN PAC. RY. - GREAT NORTHERN RY. - UNION PAC. R. R.

Northbound—Read Down				Southbound—Read Up				
Daily	Daily	Daily	Daily	Daily	Daily	Daily	Daily	
11.30	4.00	12.01	8.15	Lv. Portland, Un. Sta. Ar	2.20	4.35	9.00	6.45
12.05	4.25	12.25	9.15	Lv. Vancouver, Wn. Ar	1.45	4.06	9.06	6.15
12.57		10.03	10.03	Ar. . . . . Kalamazoo Lv	12.56			4.55
1.30	5.13	1.11	10.21	" . . . . . Kelso-Longview "	12.36	3.17	8.12	4.35
1.48		10.37	10.37	" . . . . . Castle Rock "	12.17			4.05
2.45	6.06	2.00	11.37	" . . . . . Chehalis "	11.26	p 2.24	7.16	3.05
2.55	6.16	2.10	11.46	" . . . . . Centralia "	11.15	2.17	7.06	2.53
			12.08	Ar. . . . . South Bend "			7.15	
			12.22	" . . . . . East Olympia "	1.47	b 6.35	f 1.59	
5.00	7.40	3.25	1.30	Ar. . . . . Tacoma "	9.40	12.57	5.45	1.00
				Ar. . . . . Aberdeen "				1.06
				" . . . . . Hoquiam "				2.55
u 6.45	k 9.00	k 4.35	k 2.00	Ar. . . . . Seattle Lv	k 8.20	k 12.01	k 4.00	u 11.30
7.15	9.30	5.00	8.15	Lv. . . . . Seattle Ar	8.00	9.30	12.45	10.20
8.38	10.34	6.00	9.15	" . . . . . Everett Lv	6.55	8.30	11.47	9.20
11.01		7.48	11.01	" . . . . . Bellingham Lv	6.48	10.03	6.48	
1.15		9.30	12.45	Ar. . . . . Vancouver, B. C. Lv	5.00	8.10	4.15	

† Daily except Sunday. b To and from Olympia by bus.  
 k King Street Station. p Stops from Portland and beyond. u Union Sta.



St. Johns Bridge - Willamette River, Portland, Oregon

### SOUTHERN PACIFIC COMPANY

Southbound, Read Down					Northbound, Read Up						
329	15	17	13	11	19	16	12	14	18	20	330
7.00	10.15	10.00	5.00	4.50	8.15	7.40	11.30	11.45	3.40	9.50	7.25
9.10	11.59	11.40	6.30	6.20	10.05	5.52	d 9.48	d 10.15	2.02	7.57	5.20
10.20	12.42	12.20	7.01	6.51	10.50	5.06	d 9.16	9.31	1.20	7.15	4.20
10.55	1.20	1.20			11.20	" . . . . . Corvallis . b "	4.35		8.45	12.45	6.00
11.27	1.40	1.15	7.45	7.45	11.25	" . . . . . Eugene . . . "	3.50	8.25	8.40	12.20	5.55
7.00						" . . . . . Coos Bay . . . "					6.30
	7.50	6.45	1.10	12.55	6.30	" . . . . . Klamath Falls "	9.50	3.30	3.45	6.20	11.45
12.47	West Coast	Oregonian	Beaver	Cascade	Klamath	" . . . . . Cottage Grove "					1.56
2.58						" . . . . . Roseburg "					11.46
7.20						" . . . . . Grants Pass "					7.43
8.16						" . . . . . Medford "					6.40
9.10						" . . . . . Ashland "					6.00
	6.50	b 5.40	b 9.48	b 9.48	6.20	" . . . . . Sacramento . "	10.20	b 6.42	b 6.42	7.30	10.00
	9.45	6.32	11.02	10.42	7.33	" . . . . . Oakland, 16th St. "	8.02	5.38	5.44	6.51	8.58
	9.52	6.40	11.10	10.50	7.40	" . . . . . Oakland Pier . "	7.56	5.30	5.35	6.40	8.45
	10.20	7.20	11.50	11.20	8.20	" . . . . . San Francisco "	7.30	5.00	5.00	6.00	8.00
	8.45	9.00	9.55	9.55	7.50	" . . . . . Los Angeles Lv	7.30		8.30	8.25	8.25

b—By Bus. d Stops to detrain passengers from Davis or beyond.

### EQUIPMENT OF TRAINS

**Train 11-12. Cascade.**—(Air Conditioned). Between Portland and San Francisco. Standard sleeping car with sections, drawing rooms, compartments, bedrooms. Lounge and dining car. First class tickets required.

**Train 13-14. Beaver.**—(Air Conditioned). Between Portland and San Francisco. Tourist sleeping cars, reclining chair cars, lounge and dining car. Chair car seats reserved.

**Train 15-16. West Coast.**—(Air Conditioned). Between Portland and Los Angeles. Standard sleeping car, tourist sleeping car, reclining chair car, buffet lounge and dining car.

**Train 17-18. Oregonian.**—(Air Conditioned). Between Portland and San Francisco. Standard sleeping car (sections, drawing rooms, compartments), tourist sleeping car, reclining chair car and dining car.

**Train 19-20. Klamath.**—(Air Conditioned). Between Portland and San Francisco. Standard sleeping cars, tourist sleeping cars, dining car, reclining chair cars and coaches.

**Train 329-330. Rogue River.**—Between Portland and Ashland. Standard A. C. sleeping car, sections and drawing room, lunch car, and coach. Between Portland and Coos Bay, N. A. C. tourist sleeping car and coach.

### SAN FRANCISCO—LOS ANGELES—COAST LINE

76	70	96	72	98	M	71	99	97	69	75	
9.00	7.00	12.15	8.20	8.15	0	Lv. . . . . San Francisco . Ar	9.30	6.00	9.55	8.45	9.00
10.03	8.05	1.06	9.30	9.08	47	" . . . . . San Jose . . . Lv	8.10	5.03	8.58	7.18	7.45
3.02	1.20	5.11	3.55	1.17	248	" . . . . . San Luis Obispo . "	1.50	12.53	4.52	2.00	2.40
5.58	5.00	7.30	8.10	3.37	367	" . . . . . Santa Barbara . "	10.00	10.35	2.32	10.55	11.44
9.00	8.00	9.55	12.01	6.00	471	" . . . . . Los Angeles . Lv	6.00	8.15	12.15	7.55	9.00

### SAN FRANCISCO—LOS ANGELES—VALLEY LINE

	58	56	52	M	51	57	55	
	6.00	10.00	8.00	0	Lv. . . . . San Francisco . Ar	8.30	8.50	7.20
	6.35	10.35	8.25	4	" . . . . . Oakland Pier . . "	8.10	8.30	7.00
	12.10	5.40	1.00	206	Ar. . . . . Fresno . . . Lv	3.28	2.55	11.30
	2.45	9.40	3.01	313	" . . . . . Bakersfield . . "	1.16	11.45	4.50
	8.35	6.00	7.50	484	" . . . . . Los Angeles . Lv	8.25	5.50	8.30

### UNION PACIFIC RAILROAD

Read Down			Read Up			
No. 16 Daily	No. 18 Daily	No. 12 Daily	No. 11 Daily	No. 17 Daily	No. 15 Daily	
9.30	6.30	9.00	Lv. . . . . Portland . . . . . Ar	4.55	6.50	6.30
10.58	8.01	10.42	Ar. . . . . Hood River . . . . . Lv	3.23	4.50	4.27
11.35	8.45	11.20	" . . . . . The Dalles . . . . . Lv	2.45	4.10	3.45
2.15	11.40	2.20	Ar. . . . . Pendleton . . . . . Lv	11.59	12.25	11.40
6.37	8.15	6.28	" . . . . . Baker . . . . . Lv	7.45	7.30	7.10
	8.27	10.02	" . . . . . Payette . . . . . Lv	6.21	6.20	
10.00	9.35	11.00	" . . . . . Ontario . . . . . Lv	6.09	5.05	
11.35	10.15	11.35	Ar. . . . . Nampa . . . . . Lv	5.05	3.35	4.20
4.55	4.45	5.15	Ar. . . . . Boise . . . . . Lv	4.30	2.60	3.40
			" . . . . . Pocatello . . . . . Lv	10.45	8.15	9.45
8.50	8.50	9.25	Ar. . . . . Ogden . . . . . Lv	7.00	1.40	1.40
10.00	10.00	10.45	Ar. . . . . Salt Lake . . . . . Lv	6.45	12.15	12.15
	6.55	5.55	Ar. . . . . Cheyenne . . . . . Lv	10.00		7.05
	8.20	8.30	Ar. . . . . Denver . . . . . Lv	7.00	5.05	

Light face figures denote A. M. time. Bold face figures denote P. M. time. Ar. Arrive. Lv. Leave. f Stop on Signal.

# SPOKANE, PORTLAND AND SEATTLE RAILWAY SYSTEM



## CONNECTIONS AT SPOKANE AND PASCO

Bus Daily	Bus Daily	GREAT NORTHERN RY.	Bus Daily	Bus Daily	4 Daily	SPOKANE INT'L.-CAN. PACIFIC	1 Daily
5.30	8.15	Lv. . . . . Spokane . . . . . Ar	2.55	6.45	9.00	Lv. . . . . Portland . . . . . Ar	7.35
6.10	8.52	" . . . . . Deer Park . . . . . Ar	2.10	6.05	11.59	Lv. Spokane (S.I. Ry.) Ar	12.15
7.15	9.50	" . . . . . Chewelah . . . . . Ar	1.05	5.05	4.22	Ar. . . . . Macleod (C.P.R.) Lv	11.00
7.55	10.35	" . . . . . Colville . . . . . Ar	12.25	4.10	5.25	" . . . . . Lethbridge . . . . . Lv	9.30
8.15	10.50	" . . . . . Kettle Falls . . . . . Ar	12.10	3.55			
					10.35	Ar. . . . . Calgary . . . . . Lv	7.00
					6.25	Ar. . . . . Edmonton . . . . . Lv	12.10
					9.30	Ar. . . . . Medicine Hat . . . . . Lv	5.10
					7.05	" . . . . . Moose Jaw . . . . . Lv	8.45
					8.35	" . . . . . Regina . . . . . Lv	7.05
					6.45	Ar. . . . . Winnipeg . . . . . Lv	9.00

6 Daily	4 Daily	NORTHERN PACIFIC East of Pasco	5 Daily	3 Daily	347 Daily	NORTHERN PAC. Walla Walla	348 Daily
8.45	9.00	Lv. . . . . Portland . . . . . Ar	4.40	7.35	8.45	Lv. . . . . Portland . . . . . Ar	7.35
3.00	4.35	Lv. . . . . Pasco . . . . . Ar	10.30	10.20	4.35	Lv. . . . . Pasco . . . . . Ar	9.55
	5.23	" . . . . . Connell . . . . . Ar	9.44	f 9.29	5.04	" . . . . . Attalia . . . . . Ar	9.13
	6.16	" . . . . . Lind . . . . . Ar	9.03	8.43	5.48	" . . . . . Eureka . . . . . Ar	8.32
	6.44	" . . . . . Ritzville . . . . . Ar	8.37	8.14	6.55	Ar. . . . . Walla Walla . . . . . Lv	7.30
	5.15	" . . . . . Sprague . . . . . Ar	8.03	7.34			
	f 5.51	" . . . . . Cheney . . . . . Lv	7.28	6.55			
	6.33						

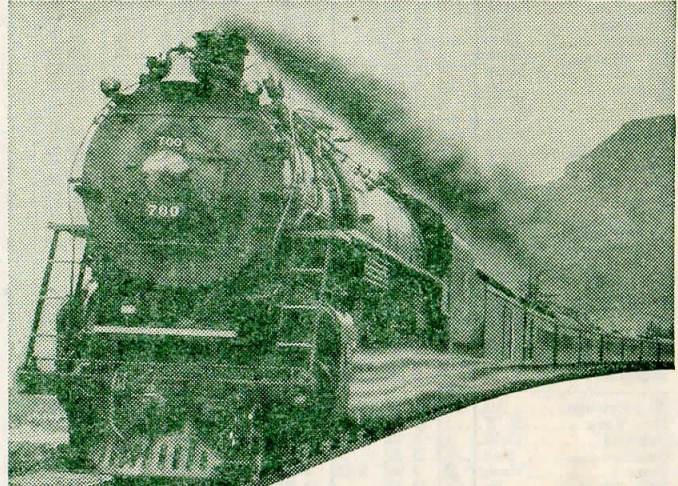
2 Daily	4 Daily	4 Daily	NORTHERN PACIFIC West of Pasco	3 Daily	3 Daily	1 Daily	GREAT NORTHERN RY. BEND, KLAMATH FALLS, BIEBER
8.45	9.00	9.00	Lv. . . . . Portland . . . . . Ar	4.40	4.40	7.35	Miles
10.45	10.30	12.45	Lv. . . . . Pasco . . . . . Ar	4.05	2.35	4.20	0
10.57	10.45		" . . . . . Kennewick . . . . . Ar		2.29	4.08	15
12.02	11.53		" . . . . . Prosser . . . . . Ar		1.41	3.11	32
12.50	12.45		" . . . . . Toppenish . . . . . Ar		12.46	2.31	52
1.35	1.35	3.02	" . . . . . Yakima . . . . . Ar	2.05	12.15	2.00	68
2.45	2.40	4.01	Ar. . . . . Ellensburg . . . . . Lv	12.55	10.56	12.44	115

313 Daily	311 Daily	NORTHERN PACIFIC	312 Daily	314 Daily
9.00	8.45	Lv. . . . . Portland . . . . . Ar	7.35	7.35
9.45	8.40	Lv. . . . . Spokane . . . . . Ar	1.00	8.10
f 10.01	f 8.56	" . . . . . Marshall . . . . . Ar	f 12.41	f 7.54
10.45	9.38	" . . . . . Rosalia . . . . . Ar	11.55	7.12
11.06	9.59	" . . . . . Oakesdale . . . . . Ar	11.35	6.54
11.33	10.28	" . . . . . Garfield . . . . . Ar	11.13	6.33
11.53	10.53	" . . . . . Palouse . . . . . Ar	10.53	6.12
12.31	11.36	" . . . . . Pullman . . . . . Ar	10.20	5.40
12.50	11.56	" . . . . . Moscow . . . . . Ar	9.58	5.15
1.55	12.50	" . . . . . Kendrick . . . . . Ar	8.58	4.13
2.04	12.56	" . . . . . Juliaetta . . . . . Ar	8.50	4.05
2.50	1.45	Ar. . . . . Lewiston . . . . . Lv	8.05	3.20

Mixed train service on irregular schedule.



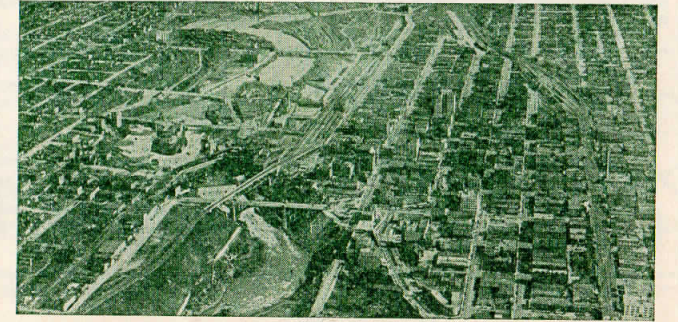
Portland, Mt. Hood



### Giants of the Rails

on the Empire Builder and North Coast Limited

These great, fast, powerful locomotives handle the overnight limited trains of the Spokane, Portland and Seattle Railway between Portland and Spokane, in the through Portland-St. Paul-Chicago service of the famous Empire Builder via the Great Northern Railway and the North Coast Limited via the Northern Pacific Railway.



Spokane

## Protect Your Luggage

Ask for Identification Label at Ticket Offices or Baggage Counters and Paste In or Outside Your Baggage. Help Us Help You in Locating Your Baggage if it Becomes Misplaced.

## SHIP AND TRAVEL BY TRAIN

Light face figures denote A. M. time. Bold face figures denote P. M. time. Ar. Arrive. Lv. Leave. f Stop on Signal.



# SPOKANE, PORTLAND AND SEATTLE RAILWAY SYSTEM

## Sleeping, Parlor Car and Reserved Seat Fares

Federal Tax Extra

For information only. Subject to change without notice.

BETWEEN AND Effective April 1, 1942	PORTLAND		SPOKANE		Table basis for determining charges for Standard Upper Berths, Drawing Rooms and Compartments				
	Seat	Lower Berth Standard	Lower Berth Tourist	Lower Berth Standard	Lower Berth Tourist	Where Lower Berth rate is	Upper Berth rate will be	Drawing Room rate will be	Compart-ment rate will be
Astoria..... Ore.	\$30								
Billingham..... Mont.	\$ 8.45	\$ 5.65	\$ 5.25	\$ 3.55					
Bingen-Wh. Salmon. Wn.	\$ 20								
Boston..... Mass.	25.15		22.30						
Boseman..... Mont.	7.55	5.10	4.35	2.95	\$ 2.35	\$ 1.80	\$ 8.10	\$ 6.95	
Buffalo..... N. Y.	22.30		19.65		2.65	2.00	9.25	7.55	
Butte..... Mont.	6.70	4.50	3.50	2.35	2.95	2.20	10.40	8.10	
Camas..... Wash.	* 15		3.20	2.15	3.20	2.45	11.55	9.25	
Chicago..... Ill.	18.25	12.20	15.35	10.25	3.50	2.65	12.75	9.85	
Cincinnati..... Ohio	20.25		17.35		4.35	3.30	16.20	12.20	
Cleveland..... Ohio	20.80		18.25		4.65	3.55	16.20	13.35	
Denver..... Colo.	12.20		11.30		4.95	3.75	17.35	13.90	
Detroit..... Mich.	20.25		17.35		5.25	4.00	18.50	15.05	
Duluth..... Minn.	15.35	10.25	12.75	8.50	5.80	4.40	20.80	16.20	
Eugene..... Ore.	2.35	1.55	4.65	3.10	6.15	4.65	21.95	17.35	
Fargo..... N. D.	13.60	9.10	10.40	6.95	6.40	4.85	23.10	17.95	
Gardiner..... Mont.	8.10		4.95		6.70	5.10	24.30	19.10	
Glacier Park..... Mont.	6.40	4.30	3.20	2.15	7.55	5.75	26.60	21.40	
Grants Pass..... Ore.	2.95	2.00	6.15	4.10	7.85	5.95	27.75	21.95	
Great Falls..... Mont.	8.10		4.65		8.10	6.20	28.90	23.10	
Havre..... Mont.	8.10	5.35	4.95	3.30	8.45	6.40	30.05	23.75	
Helena..... Mont.	6.70	4.50	3.50	2.35	9.60	7.30	33.50	27.20	
Kansas City..... Mo.	15.35		13.35		9.85	7.50	34.65	27.75	
Klamath Falls..... Ore.	1.90	2.95	2.00	6.40	10.40	7.95	37.00	29.50	
Livingston..... Mont.	7.85	5.25	4.65	3.10	11.30	8.60	40.45	31.80	
Los Angeles..... Calif.	9.60	6.40	13.05	8.70	12.20	9.25	42.75	34.10	
Louisville..... Ky.	20.25		17.35		12.75	9.70	45.05	35.85	
Lyle..... Wash.	* 20		2.95	2.00	13.05	9.90	46.20	36.45	
Medford..... Ore.	2.95	2.00	6.40	4.30	13.35	10.15	47.40	37.60	
Minneapolis..... Minn.	15.35	10.25	12.75	8.50	13.60	10.35	48.55	38.15	
Missoula..... Mont.	5.80	3.85	2.95	2.00	14.75	11.25	52.00	41.60	
New Orleans..... La.	21.95		20.25		15.35	11.70	54.30	43.35	
New York..... N. Y.	25.15		22.30		17.35	13.20	61.25	48.55	
Oakland..... Calif.	6.40	4.30	9.85	6.60	18.25	13.90	64.70	51.45	
Omaha..... Neb.	15.35		12.75		18.85	14.30	65.85	52.60	
Pasco..... Wash.	* 35	2.95	2.00	1.55	19.65	15.00	69.30	55.45	
Philadelphia..... Pa.	24.30		21.70		20.00	15.20	70.50	56.05	
Pittsburgh..... Pa.	21.70		18.85		20.25	15.40	71.65	56.60	
Portland..... Ore.			3.50	2.35	21.70	16.50	76.25	60.70	
Roseburg..... Ore.	2.65	1.80	5.25	3.55	21.95	16.75	77.40	61.85	
St. Louis..... Mo.	17.35		14.75		22.30	16.95	78.55	62.40	
St. Paul..... Minn.	15.35	10.25	12.75	8.50	24.30	18.50	85.50	68.15	
Sacramento..... Calif.	6.15	4.10	9.60	6.40	25.15	19.15	88.95	70.50	
San Antonio..... Texas	20.00		13.35						
San Francisco..... Calif.	6.40	4.30	9.85	6.60					
Seaside..... Ore.	* 30								
Seattle..... Wash.	1.20	2.95	2.00	3.50					
Spokane..... Wash.	* 50	3.50	2.35						
Stevenson..... Wash.	* 20		2.95	2.00					
Tacoma..... Wash.	* 90	2.95	2.00						
Vancouver..... Wash.	* 15		3.50	2.35					
Washington..... D. C.	24.30		21.70						
Wishram..... Wash.	* 25		2.95	2.00					

\* Reserved Seat Coach fares on day trains.

The charge for upper berths in Tourist cars is approximately 76% of the charge made for lower Tourist berth.

Applies for 2 or more passengers. When occupied by one passenger drawing room rate is 2 1/2 times Standard lower berth rate and compartment is two times Standard lower berth rates.

Rate for section when lower berth only is occupied will be quoted by ticket agents.

When both lower and upper berths are used, combination of fares will apply.

Through cars not operated in all trains; fare applies for continuous trip via direct connections. A compartment is a private room with lower and upper berths and toilet; a drawing room has a divan berth in addition. Occupancy of a drawing room requires 1 1/2 adult rail tickets, or their equivalent; requirement for compartment, one such ticket between S. P. & S.-N. P.-G. N. and connections. 1 1/2 between certain other lines; requirement for section, one such ticket.

BAGGAGE IN SLEEPING CARS.—Hand baggage in sleeping cars is restricted to what may conveniently be placed in berth or at seat occupied by passengers. All baggage should be marked with name and permanent address of owner.

### GENERAL OFFICES

EXECUTIVE, TRAFFIC AND PURCHASING DEPARTMENTS  
American Bank Building, 621 S. W. Morrison Street  
ACCOUNTING AND OPERATING DEPARTMENTS  
N. W. Eleventh Avenue and N. W. Hoyt Streets  
PORTLAND, OREGON

F. J. GAVIN.....	President	St. Paul 1, Minn.
C. E. DENNEY.....	Vice-President	St. Paul 1, Minn.
T. F. DIXON.....	Vice-President and General Manager	Portland 7, Oregon
ROBT. CROSBIE.....	Comptroller	Portland 7, Oregon
L. W. ALBERTSON.....	Assistant Comptroller	Portland 7, Oregon
C. D. PHILLIPS.....	Auditor Disbursements	Portland 7, Oregon
E. C. MICHELSEN.....	Auditor Revenue Accounts	Portland 7, Oregon
A. J. MITCHEL.....	Secretary and Chief Engineer	Portland 7, Oregon
T. L. PADDEEN.....	Treasurer	Portland 7, Oregon
G. E. WILLIAMS.....	Purchasing Agent	Portland 7, Oregon
E. H. SHOWALTER.....	Superintendent	Portland 7, Oregon
J. C. MOORE.....	Traffic Manager	Portland 7, Oregon
H. W. SHIELDS.....	General Passenger Agent	Portland 7, Oregon
GEO. F. EHLEN.....	General Freight Agent	Portland 7, Oregon
L. S. DAVIS.....	Asst. to the Gen. Frt. & Pass. Agt.	Portland 7, Oregon
KENNETH C. MILLER.....	General Industrial and Agricultural Agent	Portland 7, Oregon

W. P. GARRETT..... Right of Way and Tax Agent..... Portland 7, Oregon

### Representatives

ALBANY, ORE.....	WM. BODNO.....	(Phone M. 291) Agt., O. E. Ry. Sta.
ASTORIA, ORE.....	R. C. BAKER, 20th and Commercial (Phone 113) Agent	H. W. LINDSAY.....
BEND, ORE.....	ALBERT ALLEN (Phone 454) Agent, Passenger Sta.	B. P. GILBERT (Phone 438) Trav. Frt. & Pass. Agt.
EUGENE, ORE.....	S. A. SEXSMITH (Phone 107) Agent, O. E. Ry. Sta.	E. B. NELSON.....
HILLSBORO, ORE.....	L. SHERMAN (Ph. M. 541) Agt., O. E. Ry. Frt. Depot	JUNCTION CITY, ORE.....
LOS ANGELES 14, CALIF.....	M. A. McDANIEL (Ph. M. 382) Agt., O. E. Ry. Frt. Depot	

Great Northern Railway, 918-919 Associated Realty Bldg., Phone Vandike 1201.  
W. E. McCORMICK..... General Agent  
S. L. WILLIAMS..... District Passenger Agent  
G. M. FRENCH..... Trav. Freight & Pass. Agent  
Northern Pacific Railway, 519 Associated Realty Bldg., Phone Trinity 2322.  
D. F. WALKER..... General Agent  
J. E. BEATTY..... City Freight & Pass. Agent  
R. A. KOELBLIN, City Freight & Passenger Agent  
J. V. KRISMAN, Traveling Freight & Passenger Agent  
G. R. LALLY, Gen. Agt., Gt. Nor. Ry., 611-612 Central Bank Building, Phone Templebar 7672-73.

OAKLAND 12, CAL..... J. C. SPRACKLIN, Gen. Agt., Nor. Pac. Ry., 815 Cent. Bank Building, Phone Glencourt 8717.  
PORTLAND, ORE..... A. F. LEE..... General Agent  
Consolidated Ticket Office, S. W. Broadway and Morrison St. Telephone BRy. 5631.  
J. L. MILLER, Ticket Agent, Union Station, Foot of N. W. 6th Avenue, Telephone Broadway 3421.  
R. E. HENDERSHOTT..... General Agent  
R. A. LAWRENCE..... Trav. Freight and Pass. Agent  
W. Z. MYERS..... City Freight Agent  
G. A. SILKWORTH..... City Freight Agent  
C. J. LIVINGSTON..... District Passenger Agent  
T. J. MARTIN..... Traffic Representative  
P. H. BRINGMANN, Local Freight Agent, N. W. 11th and Hoyt, Phone ATwater 9111.

REDMOND, ORE..... G. W. SEXSMITH (Phone 13) Agt., Passenger Station  
SACRAMENTO, CAL..... T. L. MAY, Gen. Agt., Gt. Nor. Ry., 223 Forum Bldg.  
ST. HELENS, ORE..... M. RUTHERFORD (Phone 58) Agt., S. P. & S. Station  
SALEM, ORE..... J. CONDRA (Phone 4763) O. E. Ry. Freight Depot  
SAN FRANCISCO 5, CAL..... Northern Pacific Railway, 657 Market St. Phone Sutter 1078.  
DANIEL TINNEY..... General Agent  
W. CEDERBERG..... Trav. Freight and Pass. Agt.  
W. J. RIDDELL..... Trav. Freight and Pass. Agent  
G. F. HILLMAN..... City Freight and Pass. Agent  
Great Northern Railway, 679 Market Street, Phone Sutter 6051-52.  
A. L. SCOTT..... General Agent, Passenger Dept.  
C. G. ALEXANDER..... Traveling Passenger Agent  
JOSEPH L. TIERNEY..... City passenger Agent  
F. L. WEBER..... (Phone 45), Agent, S. P. & S. Ry. Sta.  
SEASIDE, ORE..... J. C. WRIGHT, General Agent  
SPOKANE 8, WASH..... HAROLD F. ERZ, City Frt. & Pass. Agt.  
925 Old National Bank Building, Phone Main 4238.  
R. C. MURPHY, General Agent, Passenger Dept.  
Davenport Hotel, Phone Main 5141.  
E. F. BAIRD, City Passenger and Ticket Agent, Sprague Ave. and Wall St. Phone Main 5321.  
H. W. GREEN..... Ticket Agent, Gt. Nor. Ry. Sta.  
VANCOUVER, WASH..... H. M. LaBERTEW, Agent (Phone 2881), S. P. & S. Ry. Sta.  
R. I. THOMPSON (Phone 735) Passenger Station

Agents of the Great Northern and Northern Pacific Railways are the direct representatives of the Spokane, Portland, and Seattle Railway Company, Oregon Trunk Railway and Oregon Electric Railway Company in California, and throughout the United States.

# ENJOY THE DAY TRIP

Between  
PORTLAND AND SPOKANE  
on the  
COLUMBIA RIVER EXPRESS

Via S. P. & S. Ry. between Portland and Pasco, and direct connecting trains via Northern Pacific Ry. with similar service between Pasco and Spokane.

## AIR-CONDITIONED RESERVED SEAT COACHES WITH OBSERVATION-LOUNGE AND CAFE SERVICE

This is the day train service between these important cities through a fascinating country.

Reserved seats (50c plus tax) are of the latest individual, adjustable type, and passengers may enjoy many club features, including observation section, card table, writing desk, etc., with the dining room for sixteen guests, offering a generous range of menu at moderate prices.

See page 3 for schedules and train equipment.

SEE...  
Mt. Hood  
Bonneville Dam  
Beacon Rock  
Columbia River Gorge  
through the HEART of the CASCADE RANGE

It is Always  
MORE  
PLEASANT  
AND  
RESTFUL  
TO  
GO-BY-TRAIN

