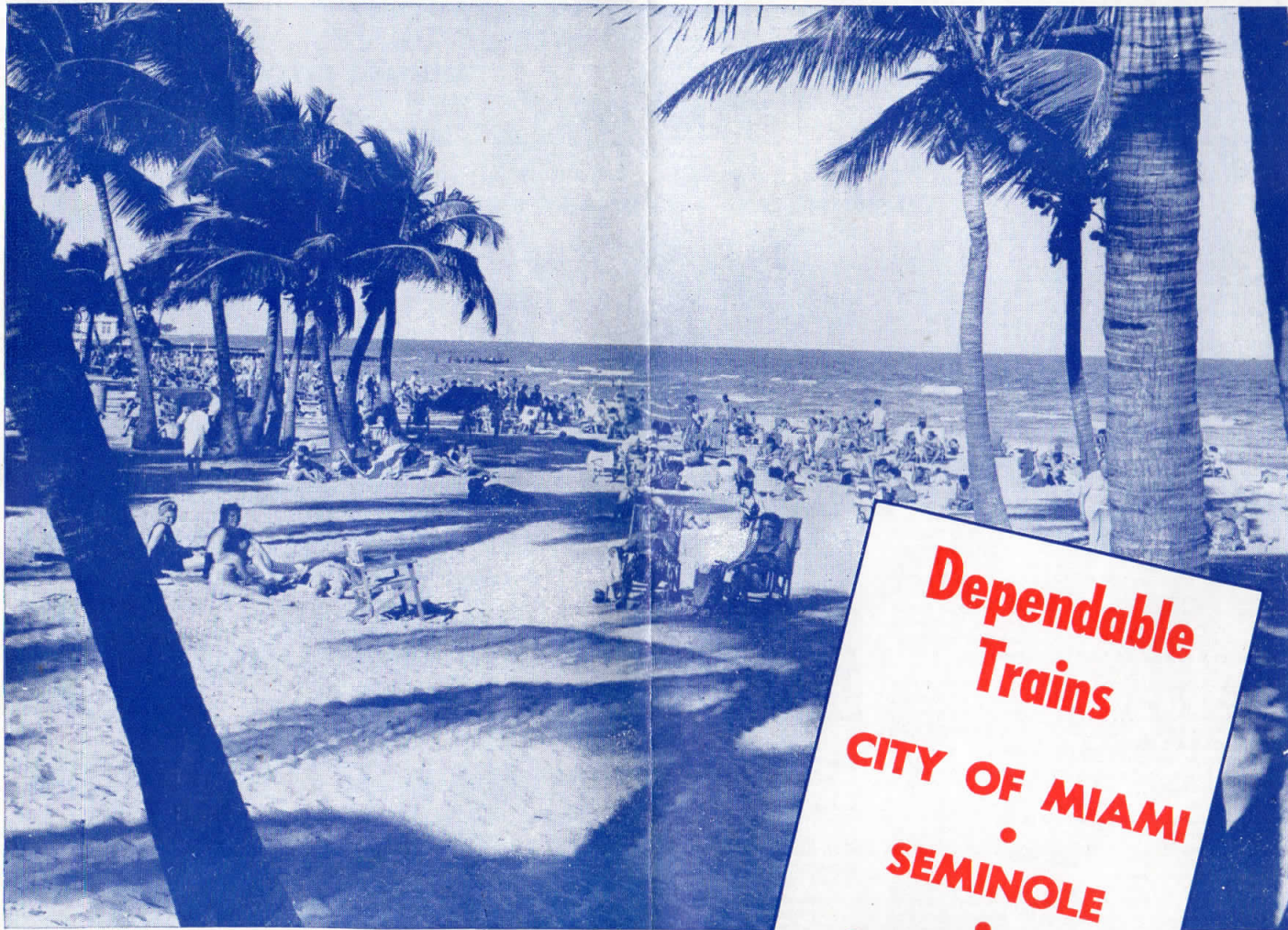


TO FLORIDA . . .

The Sunshine State



**Dependable
Trains**

CITY OF MIAMI

SEMINOLE

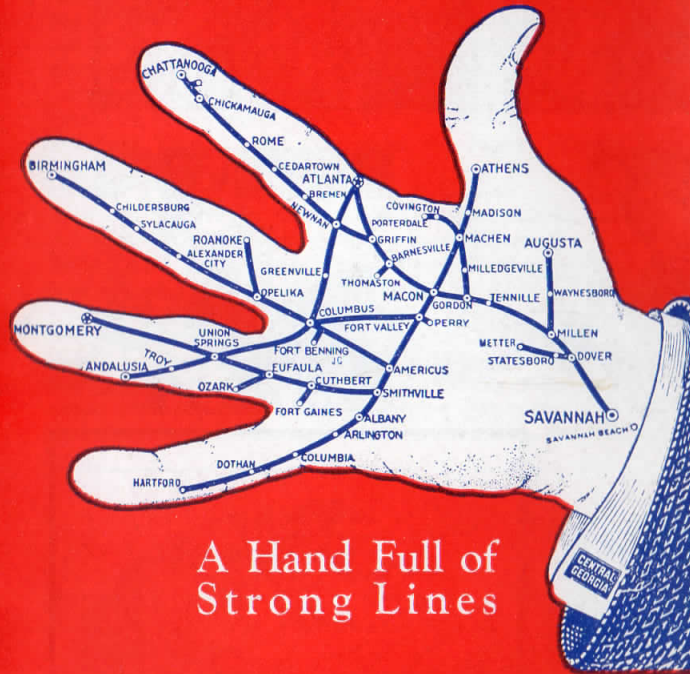
SOUTHLAND

FLAMINGO

*Have fun all the way
on the safe, comfortable*

CENTRAL OF GEORGIA Railway

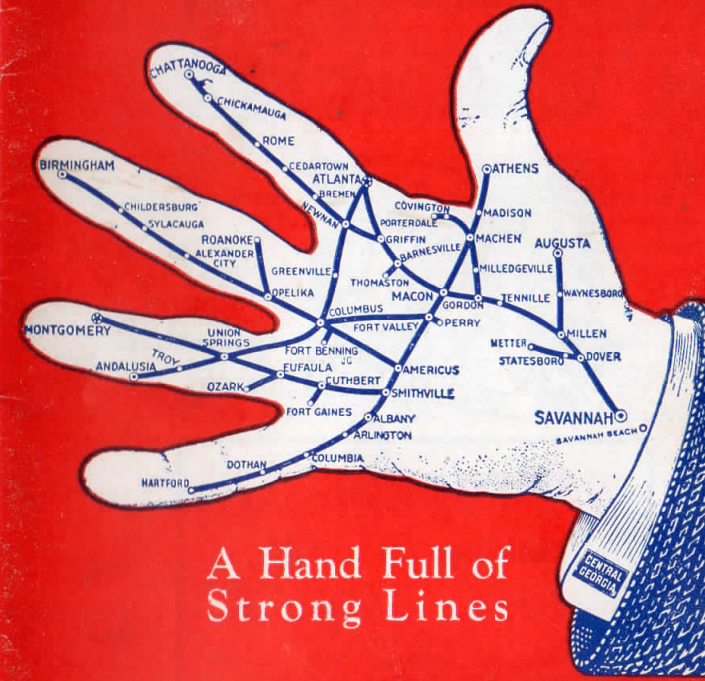
CENTRAL OF GEORGIA



A Hand Full of
Strong Lines



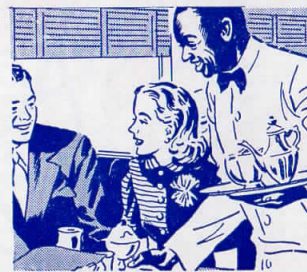
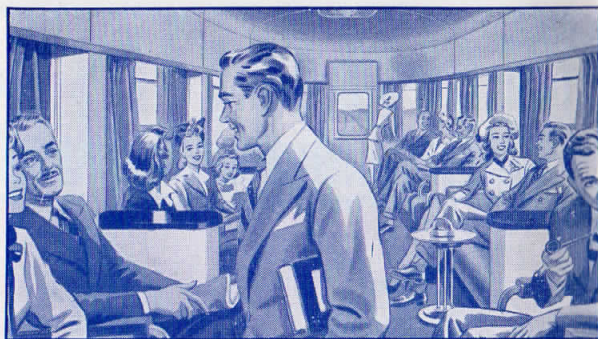
CENTRAL OF GEORGIA



A Hand Full of
Strong Lines



Streamlined MONEY SAVER SERVICE



NANCY HANKS II Linking ATLANTA, MACON and SAVANNAH

Eastern Time		
7:30 AM Leave	Savannah	Arrive 11:55 PM
8:37 AM Leave	Dover	Arrive 10:44 PM
9:05 AM Leave	Millen	Arrive 10:18 PM
9:40 AM Leave	Wadley	Arrive 9:44 PM
10:13 AM Leave	Tennille	Arrive 9:12 PM
10:51 AM Leave	Gordon	Arrive 8:30 PM
11:20 AM Arrive	Macon	Leave 8:05 PM
11:25 AM Leave	Macon	Arrive 8:00 PM
11:53 AM Leave	Forsyth	Arrive 7:28 PM
12:12 PM Leave	Barnesville	Arrive 7:12 PM
12:33 PM Leave	Griffin	Arrive 6:52 PM
1:30 PM Arrive	Atlanta	Leave 6:00 PM

5-Day Round Trip Fare.

BETWEEN ATLANTA AND

Macon-\$2.35 Savannah-\$7.40

Savannah and Macon-\$5.10

Plus Taxes

Corresponding low fares between other points

Riding in NANCY HANKS II and MAN O' WAR,

you can't help being impressed with their immaculate beauty.

Luxurious comfort is an outstanding feature. The deep cushioned seats are the reclining chair type.

In the Grill-Lounge of NANCY HANKS II and Club Observation of MAN O' WAR are all the facilities for a sociable, pleasurable journey. Delicious foods and beverages at reasonable prices.

Maid and Porter service.

**AIR-CONDITIONED
FOR YOUR COMFORT**

MAN O' WAR

Linking

ATLANTA and COLUMBUS

Eastern Time	
Leave Columbus	8:00 AM and 3:00 PM
Leave Hamilton	8:36 AM and 3:36 PM
Leave Chipley	8:49 AM and 3:49 PM
Leave Greenville	9:12 AM and 4:12 PM
Leave Luthersville	9:30 AM and 4:30 PM
Arrive Atlanta	10:45 AM and 5:45 PM

Leave Atlanta	11:30 AM and 6:45 PM
Arrive Luthersville	12:46 PM and 8:01 PM
Arrive Greenville	1:03 PM and 8:18 PM
Arrive Chipley	1:25 PM and 8:40 PM
Arrive Hamilton	1:38 PM and 8:53 PM
Arrive Columbus	2:15 PM and 9:30 PM

5-Day Round Trip Fare.

ATLANTA - COLUMBUS - \$3.10

Plus Taxes

Corresponding low fares between other points

The Central of Georgia Railway Company operates over 1,815 miles of railroad in Georgia, Tennessee and Alabama and with its through connections serves all the important recreational, business, agricultural and industrial regions of the Midwest, South and Southeast. **TABLE OF CONTENTS AND INDEX TO STATIONS** on page 4 will assist you in locating service to and from stations in this folder.

The time tables show the time at which trains may be expected to arrive and depart from stations and to connect with other trains, but departure or arrival or connection at time stated is not guaranteed. This Company reserves the right to vary from the time shown in this folder without notice. The time of connecting transportation companies is published from information available at the time this folder was printed, and every care taken to have it correct, but this Company assumes **NO RESPONSIBILITY** for errors in time tables, inconvenience or damage resulting from delayed trains.

Ticket Offices are open a sufficient time before the departure of trains to permit the purchase of tickets, and passengers are requested to do so before boarding the train; however some small station offices are closed on Saturday and Sunday and tickets should be purchased in advance at such points.

Standard Time is used throughout this folder, Central Time or Eastern Time as shown.

A.M. or P.M. . . . Time from 12.01 midnight to 12.00 noon is shown in light faced figures and time from 12.01 noon to and including 12.00 midnight in heavy faced figures.

Train Stops: Trains make regular stops at stations where time figures only are shown. When a symbol or letter appears in train column opposite station this indicates train only stops on certain conditions. Where trains make a conditional stop, advance notice should be given to agent or train conductor.

Redemption of Tickets: Tickets unused, or partly used will be redeemed under tariff regulations at proper value. Apply to Ticket Agent or mail direct to T. J. Peterson, Auditor of Revenue, Savannah, Ga.

Children under five years of age are carried free, when accompanied by parent or guardian; five years and under twelve, one half fare; twelve years of age or over, full fare.

BAGGAGE

Baggage Maxima: No single piece of baggage exceeding 300 pounds in weight, or 72 inches in greatest dimension or single shipment exceeding \$2,500.00 in value will be checked. Free allowances subject to tariff stipulations as to contents, weights, value and size.

Baggage Liability Limited: Excess value to be declared and paid for at time of checking.

Insure Your Baggage and Personal Effects, including jewelry, furs and other valuables. Policies on sale at important ticket offices. Charge for unauthorized articles in baggage. When passengers fail to disclose nature of articles offered for checking and it develops en route or at destination that the transportation of such articles as baggage is not authorized, collection will be made based on single excess baggage rate for gross weight of such articles, minimum charge thirty cents.

Bicycles (not motorcycles), Baby Carriages, Dogs, and Guns are transported in baggage cars subject to tariff regulations. Every effort will be made to facilitate the handling of baggage, but the railway cannot guarantee to forward baggage on the same train with the owner; nor can the time of arrival at destination to which checked be guaranteed. To facilitate prompt receipt of their baggage at destination passengers are advised, whenever it is possible to do so, to check it in advance in order that same be forwarded on a preceding train.

Lost Articles to be inquired for at offices of Division Superintendents, Savannah, Macon and Columbus, and at office of Superintendent Terminal Station, Atlanta.

No responsibility is assumed for unchecked articles left in stations or cars.



We open doors

TO INDUSTRIAL PROGRESS

We offer you a specialized department for studying site, raw materials, and labor to enable you to grow with the great Southeast. The facilities of this department are at your service.

501 RHODES-HAVERY
BUILDING, ATLANTA,
GEORGIA

**CENTRAL OF GEORGIA
INDUSTRIAL DEVELOPMENT DEPARTMENT**

Atlanta, Macon, Savannah Service 8
Atlanta, Macon, Albany, Dothan, Panama City Service 9
Baggage Information 3
Birmingham, Columbus, Macon, Savannah Service 12

City of Miami 5, 6, 7
Connecting Lines Service 16, 17
Directory of Traffic Offices 19
Flamingo 6, 7, 8, 9
Florida Service and Equipment 5, 6, 7
General Information 3
Louisville & Wadley Railroad 14
Man O' War 2, 12

Nancy Hanks II 2, 8
Map of Central of Georgia Railway 10, 11
Railroad and Pullman Fares 18
Seminole 6, 7, 12
Southland 6, 7, 8, 9
Sylvania Central Railway 14
Wadley Southern Railway 14
Wrightsville & Tennille R.R. 14

INDEX OF STATIONS ON CENTRAL OF GEORGIA RAILWAY

On the line indicated but not shown on Time Table. Indicates Coupon Agency. Freight Service Only—No Regular Passenger Service.

Table listing stations by letter (A-Z) and page number. Includes stations like Atlanta, Macon, Savannah, Birmingham, Columbus, Macon, Savannah, etc.

Between the Northwest and Alabama, Georgia and Florida

CENTRAL OF GEORGIA RAILWAY

FINE AIR CONDITIONED POPULAR TRAINS

CITY OF MIAMI
SOUTHLAND

SEMINOLE
FLAMINGO

Schedules at a glance on page 6—Equipment on page 7

SAFE • COMFORTABLE • DEPENDABLE • ECONOMICAL

TRAVEL IN COMFORT BY TRAIN—RENT-A-CAR AT DESTINATION

CITY OF MIAMI

AIR CONDITIONED THROUGH TRAIN

Fast • One-Night-Out • Coach-Pullman Streamliner

Deluxe Reclining Seat Coaches—All Seats Reserved

Pullmans—Sections, Roomettes, Compartments, Bedrooms, Drawing Rooms • Radio

BETWEEN CHICAGO • ST. LOUIS • MIAMI

Operates Every Third Day Until December 9, 1952
thereafter from each terminal two out of every three days

See below and page 6 for Schedules. See page 7 for dates of Operation and Equipment.

CONDENSED SCHEDULE

Table with columns for Southbound and Northbound routes, including Chicago, St. Louis, Birmingham, Jacksonville, Miami, and St. Petersburg.

Table with columns for Northbound routes, including Jacksonville, Miami, St. Petersburg, and Chicago.

FOLLOW YOUR ROUTE OF TRAVEL ON THE MAP—PAGES 10 AND 11—IT'S INTERESTING

TABLE A Southbound

Table with columns for City of Miami, Flamingo, Semi-nole, and South-land. Lists routes to Chicago, St. Louis, Birmingham, etc.

Reference Notes: A—Stops on signal to take on revenue passengers for Jackson, Tenn. and scheduled stops beyond.

TABLE A Northbound

Table with columns for South-land, City of Miami, Semi-nole, and Flamingo. Lists routes from Fort Myers, Jacksonville, etc.

Reference Notes: P—Stops to let off passengers from Jacksonville and south thereof, and to take on passengers for points north of Birmingham.

EQUIPMENT — Air Conditioned

CITY OF MIAMI

Dates of Departure SOUTHBOUND from Chicago, St. Louis, Birmingham, Sylacauga, Alexander City and intermediate points:

Oct. 1, 4, 7, 10, 13, 16, 19, 22, 25, 28, 31. Nov. 3, 6, 9, 12, 15, 18, 21, 24, 27, 30. Dec. 3, 6, 9, 12, 15, 18, 21, 24, 27, 30, 31. Jan. 2, 3, 5, 6, 8, 9, 11, 12, 14, 15, 17, 18, 20, 21, 23, 24, 26, 27, 28, 30, 31. Feb. 1, 2, 4, 5, 7, 8, 10, 11, 13, 14, 16, 17, 19, 20, 22, 23, 25, 26, 28, Mar. 1, 3, 4, 6, 7, 9, 10, 12, 13, 15, 16, 18, 19, 21, 22, 24, 25, 27, 28, 30, 31. Apr. 2, 3, 5, 6, 8, 9, 11.

Dates of Departure SOUTHBOUND from Opelika, Columbus, Americus and Albany: Oct. 2, 5, 8, 11, 14, 17, 20, 23, 26, 29. Nov. 1, 4, 7, 10, 13, 16, 19, 22, 25, 28. Dec. 1, 4, 7, 10, 13, 14, 16, 17, 19, 20, 22, 23, 25, 26, 28, 29, 31. Jan. 1, 3, 4, 6, 7, 9, 10, 12, 13, 15, 16, 18, 19, 21, 22, 24, 25, 27, 28, 30, 31. Feb. 2, 3, 5, 6, 8, 9, 11, 12, 14, 15, 17, 18, 20, 21, 23, 24, 26, 27, Mar. 1, 2, 4, 5, 7, 8, 10, 11, 13, 14, 16, 17, 19, 20, 22, 23, 25, 26, 28, 29, 31. Apr. 1, 3, 4, 6, 7, 9, 10, 12.

Dates of Departure NORTHBOUND from South Florida: Oct. 2, 5, 8, 11, 14, 17, 20, 23, 26, 29. Nov. 1, 4, 7, 10, 13, 16, 19, 22, 25, 28. Dec. 1, 4, 7, 10, 13, 14, 16, 17, 19, 20, 22, 23, 25, 26, 28, 29, 31. Jan. 1, 3, 4, 6, 7, 9, 10, 12, 13, 15, 16, 18, 19, 21, 22, 24, 25, 27, 28, 30, 31. Feb. 2, 3, 5, 6, 8, 9, 11, 12, 14, 15, 17, 18, 20, 21, 23, 24, 26, 27, Mar. 1, 2, 4, 5, 7, 8, 10, 11, 13, 14, 16, 17, 19, 20, 22, 23, 25, 26, 28, 29, 31. Apr. 1, 3, 4, 6, 7, 9, 10, 12.

Dates of Departure NORTHBOUND from Jacksonville, Albany, Americus, Columbus, Opelika, Alexander City, Sylacauga, Birmingham and intermediate points: Oct. 3, 6, 9, 12, 15, 18, 21, 24, 27, 30. Nov. 2, 5, 8, 11, 14, 17, 20, 23, 26, 29. Dec. 2, 5, 8, 11, 14, 15, 17, 18, 20, 21, 23, 24, 26, 27, 29, 30. Jan. 1, 2, 4, 5, 7, 8, 10, 11, 13, 14, 16, 17, 19, 20, 22, 23, 25, 26, 28, 29, 31. Feb. 1, 3, 4, 6, 7, 9, 10, 12, 13, 15, 16, 18, 19, 21, 22, 24, 25, 27, 28, 30, 31. Mar. 2, 3, 5, 6, 8, 9, 11, 12, 14, 15, 17, 18, 20, 21, 23, 24, 26, 27, 29, 30. Apr. 1, 2, 4, 5, 7, 8, 10, 11, 13.

Table with columns: Type of Car, Car No., South bound, North bound, Between Accommodations. Lists equipment for City of Miami routes.

NOTE A—Sleepers CM-33 and CM-34 will make last trip from Chicago December 9, 1952, and beginning from Chicago December 12 following Sleepers will be added: NOTE B—Coaches CM-5 and CM-6 will be discontinued after December 9 from Chicago.

SEMINOLE

Table with columns: Type of Car, Car No., South bound, North bound, Between Accommodations. Lists equipment for Seminole routes.

FLAMINGO

Table with columns: Type of Car, Car No., South bound, North bound, Between Accommodations. Lists equipment for Flamingo routes.

SOUTHLAND

Table with columns: Type of Car, Car No., South bound, North bound, Between Accommodations. Lists equipment for Southland routes.

TABLE 1 Eastbound. Schedule for Savannah, Millen, Augusta, and Atlanta routes. Includes columns for miles, time, and station names.

TABLE 1 Westbound. Schedule for Savannah, Millen, Augusta, and Atlanta routes. Includes columns for miles, time, and station names.

REFERENCE NOTES

- Meal stop. Southeastern Stages, Inc. Central of Georgia tickets honored. Stops for revenue passengers. Stops to let off passengers. Stops to let off revenue passengers from beyond Albany, and to take on revenue passengers for Albany. Flag stop. Stops to let off revenue passengers from beyond Atlanta, and to pick up revenue passengers for beyond Albany. Stops for passengers originating at Atlanta and Macon. Sleeper ready for occupancy 10.00 PM. Sleeper may be occupied until 8.00 AM. Sleeper ready for occupancy at 9.00 PM. Will be held 30 minutes for train No. 8 when passengers are reported.

SAVANNAH • MILLEN • AUGUSTA

TABLE 2 Eastbound. Schedule for Savannah, Millen, and Augusta routes.

EQUIPMENT—Air Conditioned

For equipment trains 17, 18, 32, 33, see page 7. Trains 1 and 2 Between Savannah and Atlanta—De luxe reclining seat coaches. Trains 3 and 4 Between Savannah and Atlanta—De luxe reclining seat coaches. Sleeping Car—Car A. Sections, compartments, drawing room. Trains 107 and 108—Nancy Hanks II—between Savannah and Atlanta—De luxe reclining seat coaches. Seats for white passengers reserved. Maid and Porter service.

AUGUSTA • MILLEN • SAVANNAH

TABLE 2 Westbound. Schedule for Augusta, Millen, and Savannah routes.

BARNESVILLE • THOMASTON

Central of Georgia Motor Transport Co. Central of Ga. tickets honored on bus.

TABLE 3 Southbound. Schedule for Barnesville and Thomaston routes.

SAVANNAH BEACH BUS LINE

Connects with Central of Georgia Trains

Operates bus between Savannah and Savannah Beach. One Way Fare 50c Round Trip Fare 90c Taxes Not Included

THOMASTON • BARNESVILLE

Central of Georgia Motor Transport Co. Central of Ga. tickets honored on bus.

TABLE 3 Northbound. Schedule for Thomaston and Barnesville routes.

TABLE 4 Southbound. Schedule for Atlanta, Macon, Albany, Dothan, and Panama City routes. Includes columns for miles, time, and station names.

EQUIPMENT—Air Conditioned

Trains 4-7 and 8-3 Between Atlanta-Dothan and Panama City. Sleeping car-sections, compartments and drawing room. Southbound Car 40, ready at Atlanta 10:00 PM. Northbound Car 41, may be occupied at Atlanta until 8:00 AM. Reclining Seat Coaches—between Macon-Dothan and Panama City. Breakfast and evening meal at Dothan. Trains 18-17—Flamingo—see page 7. Trains 32-33—Southland—see page 7. Trains 9-10—Seminole—see page 7.

WESTERN UNION TELEGRAMS

may be sent from any telegraph station. The porter will send your telegram or cablegram from the next Western Union Station. The Western Union Telegraph Company handles messages at public telegraph offices on this railway.

REFERENCE NOTES

- Meal stop. Stops to let off revenue passengers from beyond Albany, and to take on revenue passengers for Atlanta. Stops for revenue passengers for beyond Atlanta, and to let off revenue passengers from beyond Albany. Stops to pick up or let off revenue passengers. Stops to let off revenue passengers from beyond Atlanta and to pick up revenue passengers for beyond Albany. Flag stop. Sleeper ready for occupancy 10.00 PM. Sleeper may be occupied until 8.00 AM. Will be held 30 minutes for train No. 3 when revenue passengers are reported.

Banish Baggage Bother!

Travel comfortably—send baggage ahead—by Railway Express

Country-wide Service

- fast friendly convenient dependable economical



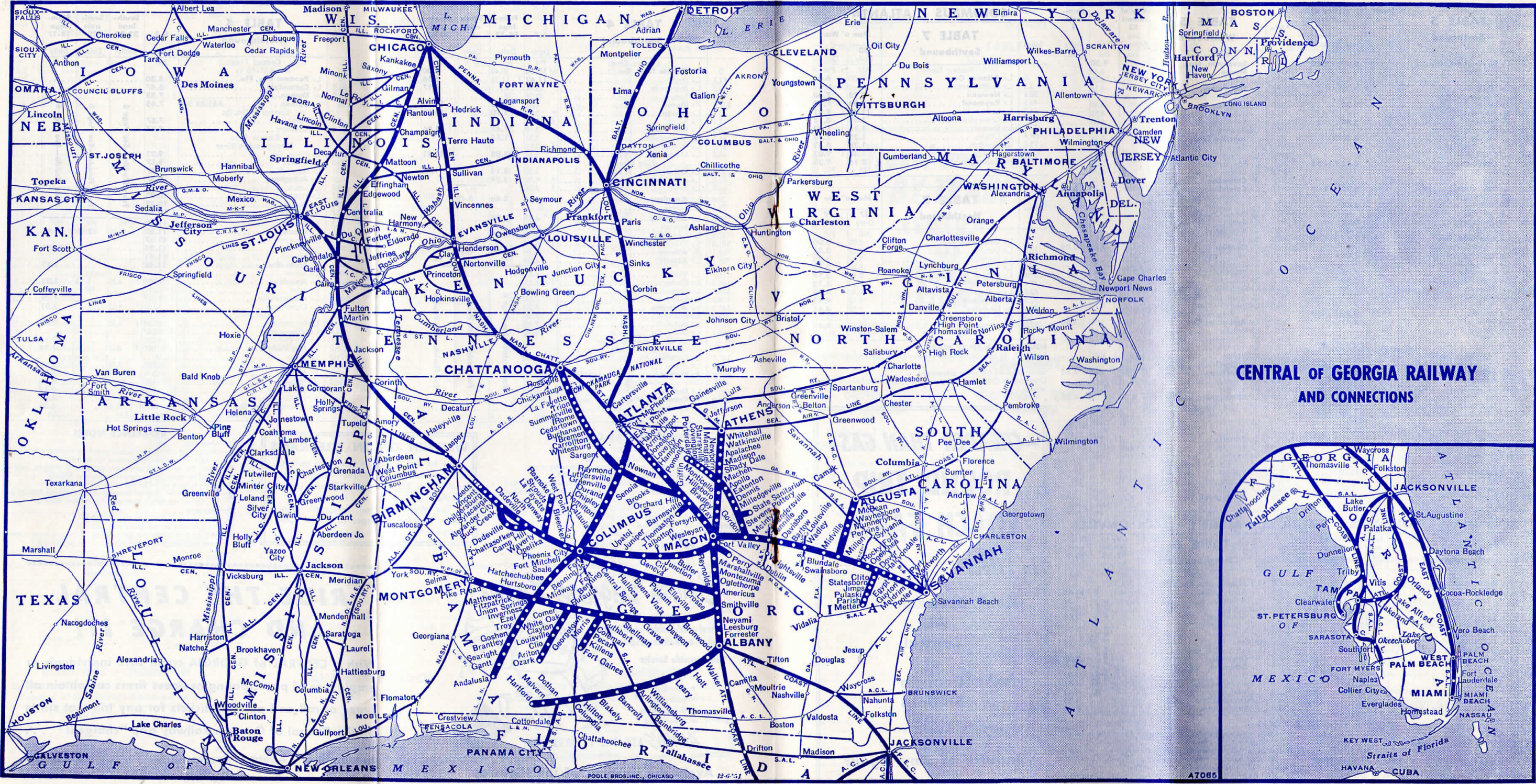
ALWAYS ASK THE EXPRESS MAN!

Avoid the Hazards of the Highway TRAVEL BY TRAIN

RIDE THE CENTRAL AND CHARGE IT!

With a CENTRAL of GEORGIA credit card individuals or employees of participating business firms can obtain all types of rail and pullman tickets for any trip that starts on the Central of Georgia Railway and "charge it" . . .

Inquire at Any Agent or Representative for full information.



CENTRAL OF GEORGIA RAILWAY AND CONNECTIONS



TABLE 5 Eastbound. Central Time. Semi-note 10, 4. City of Miami 52. See Note 1. Includes routes to Birmingham, Ala., Weems, McCombs, Cahaba River, Leeds, Vandiver, Sterrett, Caldwell, Vincent, Coosa River, Childersburg, Bon Air, Lipsy, Sylacauga, Trammells, Hollins, Parkdale, Goodwater, Kellyton, Alexander City, Tallapoosa River, Jackson's Gap, North Dadeville, Dadeville, Camp Hill, Waverly, Gold Ridge, North Auburn, Opelika, Salem, Bleecker, Smith's, Phenix City, Ala., Chattahoochee River, Eastern Time, Columbus, Ga., Upatoi, Box Springs, Juniper, Geneva, Junction City, Howard, Mizell, Butler, Reynolds, Fort Valley, Fort Valley, Fort Valley.

TABLE 5 Westbound. Eastern Time. City of Miami 53. See Note 1. Semi-note 3, 9. Includes routes from Savannah, Ga., Macon, Byron, Fort Valley, Reynolds, Butler, Mizell, Howard, Junction City, Geneva, Juniper, Box Springs, Upatoi, Columbus, Chattahoochee River, Central Time, Phenix City, Ala., Smith's, Bleecker, Salem, Opelika, North Auburn, Gold Ridge, Waverly, Camp Hill, Dadeville, North Dadeville, Jackson's Gap, Tallapoosa River, Alexander City, Kellyton, Goodwater, Parkdale, Hollins, Trammells, Sylacauga, Lipsy, Bon Air, Childersburg, Coosa River, Vincent, Caldwell, Sterrett, Vandiver, Leeds, McCombs, Weems, Irondale, Birmingham, Ala.

COLUMBUS • ATLANTA. TABLE 7 Southbound. Man o' War. 20 Daily, 18 Daily. Includes routes to Atlanta, Ga., Ft. McPherson, Newnan, Raymond, Luthersville, Greenville, Durand, Chipley, Hamilton, Cataula, Columbus.

TABLE 7 Northbound. Man o' War. 17 Daily, 19 Daily. Includes routes from Atlanta, Ga., Cataula, Hamilton, Chipley, Durand, Greenville, Luthersville, Raymond, Newnan, Ft. McPherson, Atlanta.

EQUIPMENT—MAN O' WAR. Trains 17, 18, 19, 20—Diesel powered, air conditioned coach streamliner. Seats reserved for white passengers. Observation-Club car serving food and refreshments. Maid service.

BIRMINGHAM • COLUMBUS • AMERICUS • ALBANY • JACKSONVILLE. TABLE 6 Southbound. Semi-note 10-9. City of Miami 52-53. Note 1. TABLE 6 Northbound. Eastern Time. City of Miami 52-53. Note 1. Semi-note 10-9. Includes routes to Jacksonville, Fla., Albany, Americus, Ellaville, Buena Vista, Central Springs, Ochilree, Fort Benning Junction, Sand Hill, Ochilree, Central Springs, Buena Vista, Ellaville, Americus, Albany, Jacksonville, Fla. ACL.

REFERENCE NOTES. D—Stops on signal to take on passengers for points north of Birmingham. E—Stops to take on passengers for Columbus. F—Stops on signal to take on or let off passengers. G—Stops to let off passengers from Columbus. H—Will be held 10 minutes for train No. 3 when passengers are reported.

—CHEAPER THAN GAS— ROUND TRIP COACH FARES In Effect Between ALL Central of Georgia Stations Inquire of Any Agent

MILLEN • AUGUSTA. TABLE 8. Includes routes to Augusta. HARTFORD • DOTHAN. TABLE 9. Includes routes to Dothan.

Smithville • Eufaula Montgomery. TABLE 10. Includes routes to Montgomery. GORDON • PORTERDALE. TABLE 11. Includes routes to Porterdale.

MACON • ATHENS. TABLE 12. Includes routes to Athens.

Travel and Ship BY TRAIN CENTRAL OF GEORGIA RAILWAY

FREIGHT SERVICE ONLY ON THESE LINES

GRIFFIN • CHATTANOOGA. Table 13. Includes routes to Chattanooga, Tenn.

COLUMBUS • TROY • ANDALUSIA. Table 14. Includes routes to Andalusia.

CUTHBERT • FORT GAINES. Table 15. Includes routes to Fort Gaines. DOVER • METTER. Table 16. Includes routes to Metter. OPELIKA • ROANOKE. Table 17. Includes routes to Roanoke.

EUFULA • OZARK. Table 18. Includes routes to Ozark.

FORT VALLEY • PERRY. Table 19. Includes routes to Perry.

Cruise to HAVANA Overnight Fares - Including Meals and Stateroom Accommodations. \$38.00 Oneway, 44.00 Roundtrip 30-Day Limit, 49.50 Roundtrip 6-months plus taxes. Lv. Miami Monday, Wednesday, Friday 6:00 PM. Ar. Havana Tuesday, Thursday, Saturday 8:00 AM. Lv. Havana Tuesday, Thursday, Sunday 6:00 PM. Ar. Miami Wednesday, Friday, Monday 8:30 AM. The Peninsular & Occidental Steamship Company

WADLEY SOUTHERN RAILWAY COMPANY
 WRIGHTSVILLE & TENNILLE RAILROAD COMPANY
 SYLVANIA CENTRAL RAILWAY COMPANY
 LOUISVILLE & WADLEY RAILROAD COMPANY
 D. C. Rogers, Pres., Gen. Mgr., Dublin, Ga.

Read Down Read Up

Mixed Train Ex. Sun.	Mls.	Table 20		Mixed Train Ex. Sun.
AM		Eastern Time		PM
8:30	0	Lv Wadley, Ga.	Ar	12:10
8:42	4.6	Lv Greenway	Lv	f 11:52
8:55	8.3	Lv Blundale	Lv	f 11:40
f10:00	14.2	Lv Dellwood	Lv	f11:20
10:30	19.8	Ar Swainsboro	Lv	11:00
AM				AM

Read Down Read Up

Mixed Train Ex. Sun.	Mls.	Table 21		Mixed Train Ex. Sun.
AM		Eastern Time		AM
11:05	0	Lv Tennille, Ga.	Ar	10:10
f11:30	9.4	Lv Harrison	Lv	f 9:26
f11:45	13.3	Lv Donovan	Lv	f 9:10
12:00	16.5	Lv Wrightsville	Lv	9:00
f12:15	21.5	Lv Meadows	Lv	f 8:28
f12:21	23.8	Lv Lovett	Lv	f 8:22
f12:25	25.5	Lv Manning	Lv	f 8:16
f12:30	27.9	Lv Brewton	Lv	8:10
f12:44	32.3	Lv Condor	Lv	7:56
1:05	36.3	Ar Dublin	Lv	7:45
PM				AM

Read Down Read Up

Mixed Train Ex. Sat. Sun.	Mls.	Table 22		Mixed Train Ex. Sat. Sun.
AM		Eastern Time		AM
8:00	0	Lv Sylvania, Ga.	Ar	11:15
8:45	14.7	Ar Rocky Ford	Lv	10:10
AM				AM

Read Down Read Up

Mixed Train Ex. Sun.	Mls.	Table 23		Mixed Train Ex. Sun.
PM		Eastern Time		PM
1:30	0	Lv Wadley, Ga.	Ar	3:30
2:00	10.0	Ar Louisville	Lv	3:00
PM				PM

REFERENCE NOTES
 Mixed trains carry freight and passengers. f Flag stop.

FRIENDLY SERVICE FOR 42 YEARS
 has been rendered our farmer patrons by the Central of Georgia Railway Agricultural Department.

The services of our specialists are available without charge to assist in the development of livestock, pasture, crop and forestry programs.

- Jones Purcell, Agricultural Agent, Athens, Ga.
- J. F. Spiers, Forester, Statesboro, Ga.
- H. L. Bowyer, Assistant to Director—Agricultural Development, Savannah, Ga.
- W. Tap Bennett, Director—Agricultural Development, Savannah, Ga.



SHIP BY
SEATRIN
 ... for LOW COST,
 RAIL-WATER DEPENDABILITY

NEW YORK	Lv.	FRIDAYS
SAVANNAH	Ar.	MONDAYS
SAVANNAH	Lv.	TUESDAYS
NEW YORK	Ar.	THURSDAYS

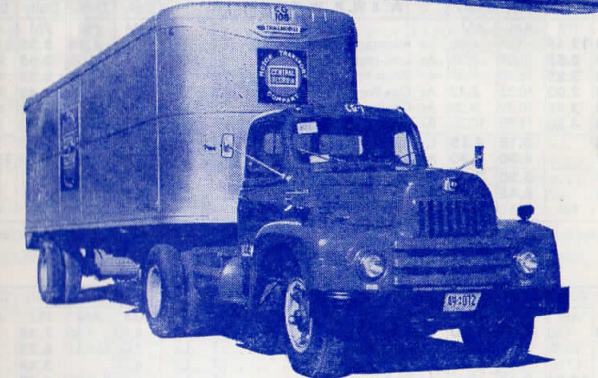
Shippers and receivers of carload freight save by specifying rail-water SEATRIN service. Rates are low, schedules are regular — dependable. Possibility of damage is at a minimum. If you'd like to save money on your carload freight shipping costs, write or call Seatrain or any Central of Georgia representative for information on sailings and rate schedules.

SEATRIN LINES, Inc.
 Seatrain Terminal
 P. O. Box 163, Savannah, Ga.
 702 Healey Building
 Atlanta, Ga.

FREIGHT MOVES FAST ON THE C.O.F.G.A.!



THRU SERVICE. Dieselized freight trains operate daily between the gateways of Atlanta, Chattanooga, Birmingham, Montgomery . . . Albany, Athens, Augusta, and Savannah . . . serving the principal communities of Alabama and Georgia. This freight service is an important link between the West and Florida, the Carolinas. Also the Southeast and the East.



PORT FACILITIES. Speed your products to and from world markets by using the Port of Savannah where the Central owns and maintains modern waterfront facilities for handling export and import freight. Savannah has frequent and regular world-wide sailings.

RAIL-TRUCK. Co-ordination of rail and truck schedules provides faster service for less-than-carload freight shipments between many points on the Central. A fleet of new trucks and trailers, manned by experienced drivers, is your assurance of good service.



We invite you to call a Central of Georgia Representative to help you plan every phase of your shipping operation.

A VITAL LINK IN SOUTHEASTERN TRANSPORTATION



CONNECTING LINES SERVICE

AT ALBANY

Table with columns for Daily, PM, AM, and routes to Albany, Thomasville, etc.

Table with columns for Daily, PM, AM, and routes to Albany, Moultrie, etc.

AT ATLANTA, GA.

Table with columns for Daily, PM, AM, and routes to Atlanta, LaGrange, etc.

Table with columns for Daily, PM, AM, and routes to Atlanta, Marietta, etc.

Table with columns for Daily, PM, AM, and routes to Atlanta, Elawah, etc.

Table with columns for Daily, PM, AM, and routes to Atlanta, Athens, etc.

Table with columns for Daily, PM, AM, and routes to Atlanta, Birmingham, etc.

Table with columns for Daily, PM, AM, and routes to Atlanta, Rome, etc.

Table with columns for Daily, PM, AM, and routes to Atlanta, Gainesville, etc.

AT BIRMINGHAM, ALA.

Table with columns for Daily, PM, AM, and routes to Birmingham, Tupelo, etc.

Table with columns for Daily, PM, AM, and routes to Birmingham, Decatur, etc.

CONNECTING LINES SERVICE

Table with columns for Daily, PM, AM, and routes to Birmingham, Tuscaloosa, etc.

Table with columns for Daily, PM, AM, and routes to Birmingham, Columbus, Miss.

AT DOTHAN, ALA.

Table with columns for Daily, PM, AM, and routes to Dothan, Cottondale, etc.

AT MACON, GA.

Table with columns for Daily, PM, AM, and routes to Macon, Irwinton, etc.

AT MIAMI

Table with columns for Mon., Wed., Fri., Tue., Thur., Sat., PM, AM, and routes to Miami, Havana.

AT MILLEN

Table with columns for Daily, PM, AM, and routes to Millen, Waynesboro, etc.

AT OPELIKA, ALA.

Table with columns for Daily, PM, AM, and routes to Opelika, Montgomery, etc.

Table with columns for Daily, PM, AM, and routes to Opelika, West Point, etc.

AT SAVANNAH

Table with columns for Daily, PM, AM, and routes to Savannah, Charleston, etc.

Table with columns for Daily, PM, AM, and routes to Savannah, Jacksonville, etc.

AT TENNILLE, GA.

Table with columns for Daily, PM, AM, and routes to Tennille, Athens.

CONDENSED THROUGH SCHEDULES AND SERVICE BETWEEN SAVANNAH, MACON, COLUMBUS AND PENSACOLA, MOBILE, NEW ORLEANS, VIA OPELIKA, AND VIA MONTGOMERY

Table with columns for Daily, PM, AM, and routes to Savannah, Millen, etc.

REFERENCE NOTES

Note 1—Central of Georgia Railway tickets honored on bus. CT—Central Time ET—Eastern Time A—See Page 7 for dates of departure.

RAILROAD AND PULLMAN SLEEPING CAR FARES

Given as information only and subject to change without notice, except as required by law. Federal and State Taxes not included.

Table with columns for 'BETWEEN', 'RAILROAD FARES', and 'PULLMAN FARES'. It lists various cities and routes with corresponding fares for different classes of service.

TABLE FOR DETERMINING PULLMAN CHARGES FOR UPPER BERTH AND ROOM ACCOMMODATIONS

Based on charge for Lower Berth as shown in table above.

Applies only between points where through Pullman fares are published—not to combination Pullman fares. Taxes not included.

Table with columns for 'Where lower berth fare is', 'Upper Berth fare will be', 'Drawing Room Fare', 'Compartment Fare', 'Bedroom Fare', and 'Roomette Fare'. It provides detailed pricing for Pullman accommodations.

MINIMUM NUMBER OF RAILROAD TICKETS required for exclusive occupancy of Pullman accommodations:

Small table showing ticket requirements for different Pullman accommodations: Drawing room, Roomette, and Section.

TRAFFIC DEPARTMENT

W. McN. KNAPP, Vice-President, Savannah, Ga.

PASSENGER

T. J. STEWART, Passenger Traffic Manager, Savannah, Ga. GEO. W. STRADTMAN, General Passenger Agent, Savannah, Ga.

FREIGHT

C. D. CHANCELLOR, Freight Traffic Manager, Savannah, Ga. M. W. THOMAS, Assistant Freight Traffic Manager, Savannah, Ga. A. W. SANDERS, Assistant Freight Traffic Manager, Savannah, Ga. H. C. WHITE, Assistant Freight Traffic Manager, Savannah, Ga.

AGRICULTURAL DEVELOPMENT

W. TAP BENNETT, Director, Savannah, Ga. H. L. BOWYER, Assistant to Director, Savannah, Ga. J. F. SPIERS, Forester, Statesboro, Ga. JONES PURCELL, Agricultural Agent, Athens, Ga. JAMES H. NUNN, Agronomist, Auburn, Ala.

INDUSTRIAL DEVELOPMENT

HARRELL L. PERKINS, Vice-President, Atlanta 3, Ga. C. LANIER DEAL, Assistant to Vice-President, Atlanta 3, Ga. B. A. BATES, General Industrial Agent, New York 20, N. Y. WALTER R. BROWN, General Industrial Agent, Atlanta 3, Ga. F. A. NORTON, Assistant General Industrial Agent, Atlanta 3, Ga. W. H. BARNWELL, Sr., Industrial Consultant, Atlanta 3, Ga.

PASSENGER AND FREIGHT REPRESENTATIVES

ALBANY, GA.—500 N. Washington St., Telephone 25. COLUMBUS, GA.—Union Passenger Station, 12th St. & 6th Ave., Telephone 6211, 33462, 3-5658. ATHENS, GA.—105 Mitchell St., Telephone 640. ATLANTA 3, GA.—Piedmont Hotel Building, 95 Forsyth St., N. W., Telephone WALnut 8181 and LAMar 0946. ATLANTA 3, GA.—181 Alabama St., S. W., Telephone WALnut 1201. AUGUSTA, GA.—Campbell Building, 102 8th St., Telephone 4-4343. BIRMINGHAM 3, ALA.—Empire Bldg., 104 North 20th St., Telephones 3-6231, 3-6232. BIRMINGHAM 3, ALA.—601-606 Brown-Marx Bldg., First Avenue and 20th St., Telephone 3-5295. CHATTANOOGA 2, TENN.—1400 Market St., Telephone 6-1021. CHICAGO 4, ILL.—1035 Utilities Bldg., 327 South LaSalle Street, Telephone WAbaSh 2-8621. CHICAGO 4, ILL.—1035 Utilities Bldg., 327 South LaSalle Street, Telephone WAbaSh 2-8621. CINCINNATI 2, OHIO.—337 Dixie Terminal Bldg., 49 East 4th St., Telephone MAIn 0636. CLEVELAND 13, OHIO.—507 Terminal Tower Bldg., 50 Public Square, Telephone TOWer 1-2395.

REFERENCE NOTES

- A—Intrastate in Georgia only. B—Intrastate in Georgia limit 5 days in addition to date of sale. C—Limit 5 days. G—Applies from Atlanta, Ga.

WHY NOT TRY THE RAIL-AUTO TRAVEL PLAN (Hertz Driv-ur-Self System)

Enjoy the restfulness and safety of train travel to your destination—then—use a new automobile for business, or pleasure, for as long as you want it. Central of Georgia Ticket Agents will make all arrangements. This service available at practically all important cities.

LET A CENTRAL OF GEORGIA RAILWAY REPRESENTATIVE HELP PLAN YOUR TRIP