

CENTRAL VERMONT RAILWAY, INC.

(General Offices—St. Albans, Vt.)

R. C. Vaughan	Chairman and President	Montreal, Que.
R. D. Garner	General Manager	St. Albans, Vt.
M. E. Barnes	Assistant General Manager	St. Albans, Vt.
S. C. Vaughan	General Passenger Agent	St. Albans, Vt.
W. J. Regan	District Passenger Agent	St. Albans, Vt.
W. A. Kember	General Freight Agent	Boston, Mass.
J. L. Dempsey	Asst. General Freight Agent	St. Albans, Vt.

PASSENGER AND FREIGHT REPRESENTATIVES

Boston (16) Mass.
 Passenger Department, 497 Boylston St., Phone Commonwealth 7300.
 S. C. Vaughan, General Passenger Agent
 (10) Freight Department, 80 Federal St., Phone Hubbard 3810.
 W. A. Kember, General Freight Agent.
 M. P. Cunningham, General Agent.

Buffalo, (3) N.Y.
 Passenger Department, 22 North Division St.
 C. V. Howick, General Agent Passenger Dept.

Burlington, Vt.
 Passenger Department, 137 St. Paul St., Phone 3610.
 W. S. Appleyard, City Ticket Agent.

Chicago, (3) Ill.
 Passenger Department, 4 So. Michigan Blvd.
 A. M. Nolan, General Western Passenger Agent.

Detroit, (26) Mich.
 Passenger Department, 1239 Washington Blvd.
 H. L. McCaughey, General Agent.
 Freight Department, 5-209 General Motors Bldg.
 M. W. Simpson, General Agent, Phone Madison 7777.

Montreal, Que.
 Passenger and Freight Dept., 384 St. James St., Phone Marquette 7316.
 Ernest Lortie, General Agent.

New Haven, Conn.
 Freight Department, 39 Church St., Phone 8-1707.
 J. C. Burns, General Agent.

New York (22) N. Y. (Canadian National Railways)
 Passenger Department, 673 Fifth Avenue, Phone Wickersham 2-3200.
 Geo. L. Bryson, General Eastern Passenger Agent.
 E. C. Drake, District Passenger Agent.
 Freight Department, 233 Broadway, Phone Rector 2-2700.
 H. H. Wilson, General Eastern Freight Agent.
 C. H. Kent, Foreign Freight Agent.

Philadelphia (7) Pa.
 Passenger Dept., Suite 1142, Lincoln-Liberty Bldg., Broad & Chestnut Sts.
 M. J. Woods, General Agent.
 (2) Freight Department, 1420-1426 South Penn Square.
 H. R. Fish, General Agent.

Pittsburgh, (22) Pa.
 Passenger and Freight Department, 355 Fifth Ave.
 J. E. Myers, General Agent, Passenger Dept.
 W. J. Hickey, General Agent, Freight Dept.

St. Albans, Vt.
 Passenger Department, Phone 1120.
 W. J. Regan, District Passenger Agent.

Washington (5) D. C.
 A. P. Lait, General Agt., 922, 15th St. N. W.

Woonsocket, R. I.
 C. P. Nadeau, Traveling Passenger Agent, 60 Greene St.

CANADIAN NATIONAL HOTELS

Plan to stay at these Canadian National Hotels of Distinction—the thoughtful, efficient Canadian National Service will make your stay an enjoyable one.

CHATEAU LAURIER Ottawa, Ontario	The MACDONALD Edmonton, Alberta
The NOVA SCOTIAN Halifax, Nova Scotia	The BESSBOROUGH Saskatoon, Saskatchewan
PRINCE EDWARD HOTEL Brandon, Manitoba	PRINCE ARTHUR HOTEL Port Arthur, Ontario
The CHARLOTTETOWN Charlottetown, P. E. I.	The FORT GARRY Winnipeg, Manitoba

HOTEL VANCOUVER*
Vancouver, British Columbia

*Operated under the joint management of CANADIAN NATIONAL RAILWAYS and the

CANADIAN PACIFIC RAILWAY COMPANY

CUSTOMS AND IMMIGRATION

United States Custom Officers will examine all passengers and their hand baggage, and United States Immigration Officers will examine all passengers, entering the United States.

The Canadian Immigration and Customs Officers conduct similar examinations of all Passengers and baggage entering Canada.

To avoid delay and inconvenience, passengers are requested to co-operate by having their identification papers and hand baggage ready for inspection. It is necessary that passengers be with their baggage when it is examined.

This examination does not apply to checked baggage carried in the baggage car

NO PASSPORTS REQUIRED TO VISIT CANADA

Insofar as citizens of the United States are concerned they may enter and leave Canada as heretofore, without passports. Regulations do not require passports for United States citizens visiting Canada, although it is desirable that United States citizens have with them means of identification, such as birth certificates, naturalization papers, poll tax receipts or certificates from public officials who can certify American citizenship of the traveler.

TRANS-CANADA AIR LINES THREE TRANSCONTINENTAL flights

Daily Service

Transcontinental

SYDNEY - HALIFAX - MONCTON - SAINT JOHN & FREDERICTON - MONTREAL - OTTAWA - TORONTO - NEW YORK - NORTH BAY - WINNIPEG - REGINA - LETHBRIDGE - VANCOUVER - VICTORIA

Inter-City

MONTREAL - OTTAWA - TORONTO
SYDNEY - HALIFAX - MONCTON - SAINT JOHN & FREDERICTON - MONTREAL
TORONTO - LONDON - WINDSOR (DETROIT)
LETHBRIDGE - CALGARY - EDMONTON

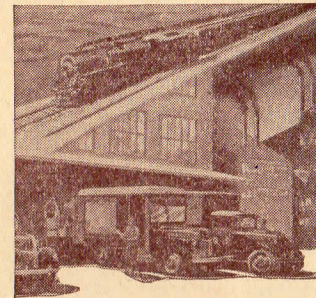
International

NEW YORK - TORONTO
MONCTON - SYDNEY - ST. JOHN'S (NEWFOUNDLAND)

For information as to fares and schedules consult Trans-Canada Air Lines or any Passenger Representative of

CENTRAL VERMONT or CANADIAN NATIONAL RAILWAYS

TRAINS and VEHICLES Geared For Your Shipping Needs



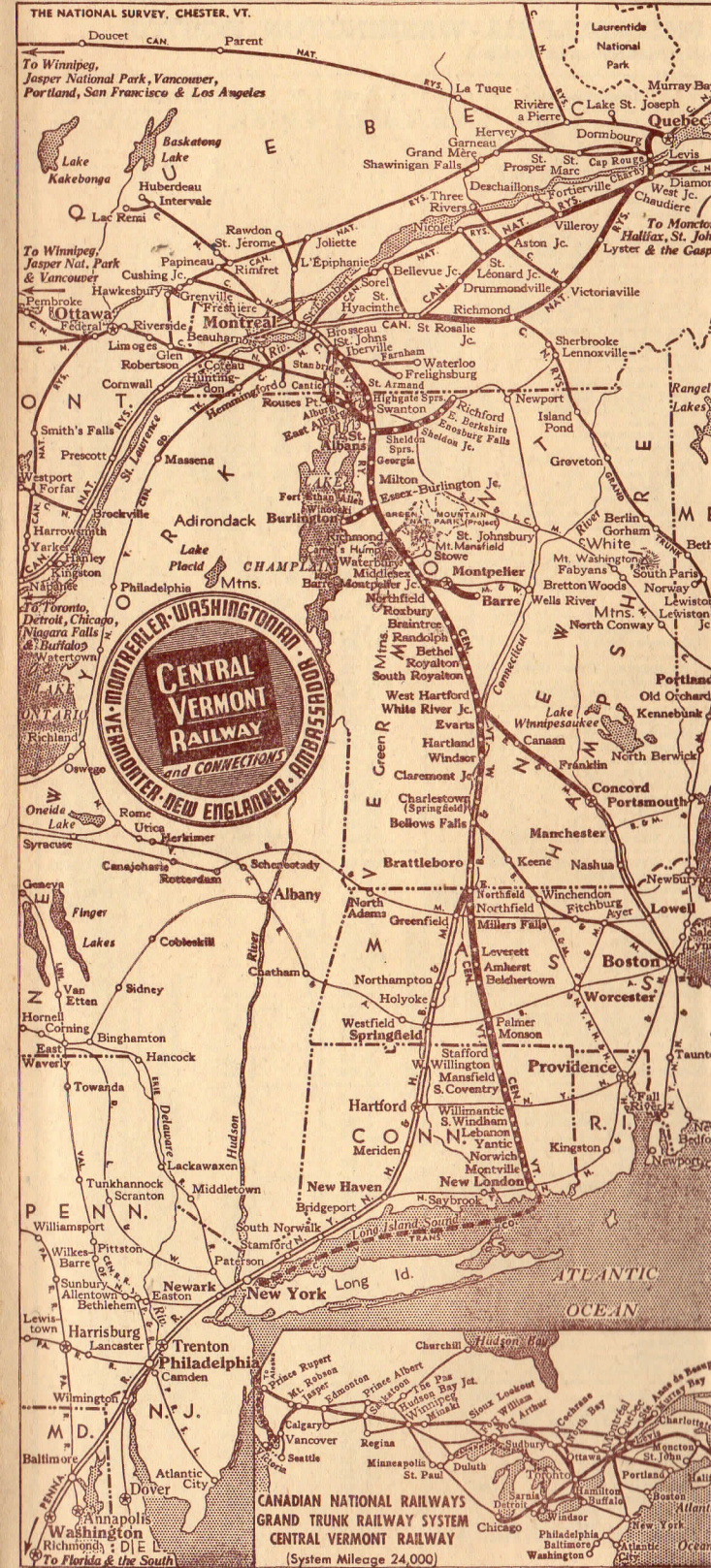
Railway Express service is organized and administered to save America time and effort. Express Trains, motorized delivery vehicles, and skilled personnel keep the nation's goods moving. You can help the even flow of shipments by secure packing, clear addressing and an early start on their way.

RAILWAY EXPRESS
AGENCY INC.

NATION-WIDE SERVICE

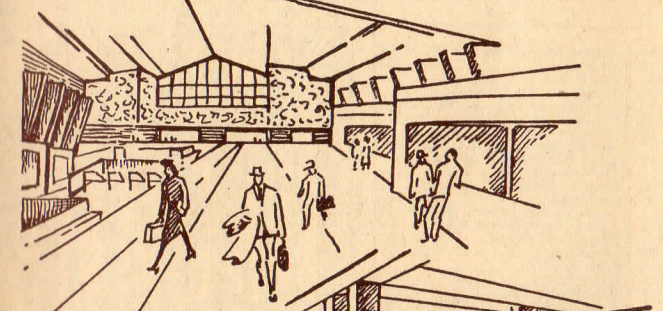
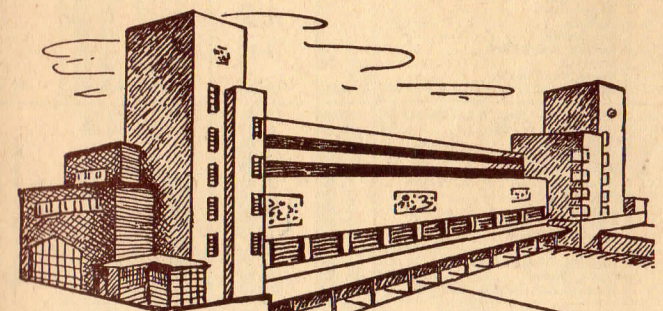
WESTERN UNION TELEGRAMS

May be sent from any telegraph station. Domestic Service: Full Rate Telegrams (fast service at reasonable rates) Day Letters (inexpensive deferred service) Night Letters (Over-night service at reduced rates) The porter will send your telegram or cablegram from the next station.



CENTRAL VERMONT RAILWAY

in connection with
Canadian National-Grand Trunk Railways



CENTRAL STATION
MONTREAL QUE.

Terminal of the
MONTREALER — WASHINGTONIAN — AMBASSADORS

CENTRAL VERMONT RAILWAY

MONTREAL - VERMONT POINTS - NEW YORK - PHILADELPHIA - WASHINGTON - BOSTON THROUGH AIR CONDITIONED EQUIPMENT—SEE PAGE 4

Main railway schedule table with columns for Miles, (Southbound), (Northbound), and various station names like Montreal, Burlington, New York, Philadelphia, Washington, Boston.

BRATTLEBORO AND NEW LONDON ST. ALBANS AND RICHFORD Freight Service Only—27.3 Miles. Motor coach service—Independently operated by Northern Bus Lines.

AYER AND WORCESTER VIA BELLOWS FALLS. P.M. 8:50, A.M. 9:25, P.M. 11:15, A.M. 12:10, P.M. 1:45, 2:42, 4:00, 4:56, 5:26, 6:19, 7:30.

CANADIAN NATIONAL RAILWAYS MONTREAL - QUEBEC. Eastbound, Westbound, Quebec, Que. (Palais Sta.), Ar Quebec, Que. (Ferry).

MONTREAL - OTTAWA. Lv Montreal, Que. (Can. Nat'l Central Sta.), Ar Ottawa, Ont. (Union Sta.) (Chateau Laurier).

MONTREAL - TORONTO - BUFFALO - DETROIT - CHICAGO. Miles, Westbound, Eastbound, Lv Montreal, Que. (Can. Nat'l Central Sta.), Ar Toronto, Ont. (Union Station).

MONTREAL - WINNIPEG - EDMONTON - JASPER - VANCOUVER. Miles, Westbound, Time Daily, Ex-ample (Thur.), Lv Montreal, Que. (Can. Nat'l Central Sta.), Ar Winnipeg, Man. (The Fort Garry Hotel).

REFERENCE MARKS. *Daily, †Sundays only, ‡Daily except Sunday, §Daily except Saturday and Sunday, ¶Daily except Monday, ⓂDaily except Saturday, ⓃMondays only.

EQUIPMENT. No. 20 THE WASHINGTONIAN—No. 21 THE MONTREALER. AC Coaches, AC Buffet Lounge Car (8 Sec.) (Nos. K-133 & K-110) Montreal, New York and Washington.

THE AMBASSADOR. Nos. 332 and 307—Montreal and Boston. AC Coach, AC Buffet Parlor Car Railroad operated (Nos. 38 & 37) Montreal and Boston.

NEW ENGLANDER. No. 20 Montreal to White River Jct. to Boston, No. 302 White River Jct. to Montreal, No. 325 Boston to White River Jct. No. 21 White River Jct. to Montreal.

THE VERMONT. Nos. 304-303—St. Albans-White River Jct.-New York. AC Sleeping Car (12 Sec., 1 D.R.) (Nos. 125 & 126) St. Albans and New York.

No. 72. AC Buffet Parlor Car, AC Coaches, AC Grill Car. White River Jct. to New York, White River Jct. to New York, Springfield to New York.

INFORMATION. Time-tables herein are subject to change without notice. They show the times trains and motor coaches should arrive at and depart from stations but their arrivals, departures, or connections at the times stated, are not guaranteed.