

NEWFOUNDLAND RAILWAY

LABRADOR SERVICE

(June to October)

St. John's	Hawk's Harbor	Fack's Harbor
Brigus (Outward)	Bolster's Rock	George's Island
Bay Roberts		
Hr. Grace	Comfort Bight	Indian Island
Carbonear	Frenchman's Island	Rigolet
Trinity	Punch Bowl	Indian Harbor
Catalina	Webber's Cove	Smokey
Wealeyville	Flat Island	White Bears
	Sandy Islands	Emily Harbor
Twillingate	Batteau	Horse Harbor
St. Anthony	Black Tickle	Holton
Battle Harbor	Spotted Islands	Sloop Cove
Spear Harbor	Domino	Cape Harrison
Francis Harbor	Red Point	Ragged Islands
Fishing Ship's Hr.	Indian Tickle	Long Tickle
Ship Harbor	Wolf Islands	Iron Bound Islands
Occasional Harbor	Black Islands	Macevik
Square Islands	Grady	Allik
Dead Island	Long Island	Turnavick
Snug Harbor	Cartwright	Hopedale
Venison Islands		

ST. JOHN'S & FOGO STEAMSHIP SERVICE

(May to December)

Every Wednesday

St. John's	Lumsden	Horwood
Port Union	Offer Wadham	Stag Harbor
Catalina	Peckford Island	Indian Island
King's Cove	Musgrave Harbor	Seldom
Flat Island	Ladle Cove	Tilting
St. Brendan's	Carmanville	Joe Batt's Arm
Deer Island	Frederickton	Fogo
Greenspond	Main Point (Big Bight)	Change Islands
Valleyfield	Gander Bay	
Wealeyville	Victoria	

NEWFOUNDLAND RAILWAY

NEWFOUNDLAND

ONLY ONE HUNDRED MILES BY SEA FROM CANADA

ST. JOHN'S, NEWFOUNDLAND, TO MONTREAL

Leave St. John's	5.00 p.m.	Sun., Tues., & Thurs.
Arrive Port-aux-Basques	8.30 p.m.	Mon., Wed., & Fri.
Leave Port-aux-Basques	9.30 p.m.	Mon., Wed., & Fri.
Arrive North Sydney	6.00 a.m.	Tues., Thurs., & Sat.
Leave North Sydney	7.25 a.m.	Tues., Thurs., & Sat.
Arrive Truro	4.50 p.m.	Tues., Thurs., & Sat.
Leave Truro	5.20 p.m.	Tues., Thurs., & Sat.
Arrive Montreal	6.40 p.m.	Wed., Fri., & Sun.

MONTREAL TO ST. JOHN'S, NEWFOUNDLAND

Leave Montreal	8.00 p.m.	Sun., Tues., & Thurs.
Arrive Truro	7.50 p.m.	Mon., Wed., & Fri.
Leave Truro	9.10 p.m.	Mon., Wed., & Fri.
Arrive North Sydney	6.35 a.m.	Tues., Thurs., & Sat.
Leave North Sydney	8.30 p.m.	Tues., Thurs., & Sat.
Arrive Port-aux-Basques	6.00 a.m.	Wed., Fri., & Sun.
Leave Port-aux-Basques	7.45 a.m.	Wed., Fri., & Sun.
Arrive St. John's, Nfld.	noon	Thurs., Sat. & Mon.

ST. JOHN'S, NEWFOUNDLAND, TO BOSTON, MASS.

Leave St. John's, Nfld.	5.00 p.m.	Sun., Tues., & Thurs.
Arrive Port-aux-Basques	8.30 p.m.	Mon., Wed., & Fri.
Leave Port-aux-Basques	9.30 p.m.	Mon., Wed., & Fri.
Arrive North Sydney	6.00 a.m.	Tues., Thurs., & Sat.
Leave North Sydney	7.25 a.m.	Tues., Thurs., & Sat.
Arrive Truro	4.50 p.m.	Tues., Thurs., & Sat.
Leave Truro	10.20 a.m.	Wed., Fri., & Sun.
Leave Saint John, N.B.	5.45 p.m.	Wed., Fri., & Sun.
Arrive Boston, Mass.	6.55 a.m.	Thurs., Sat., & Mon.

BOSTON TO ST. JOHN'S, NEWFOUNDLAND

Leave Boston	9.30 p.m.	Sun., Tues., & Thurs.
Arrive Truro	7.50 p.m.	Mon., Wed., & Fri.
Leave Truro	9.10 p.m.	Mon., Wed., & Fri.
Arrive North Sydney	6.35 a.m.	Tues., Thurs., & Sat.
Leave North Sydney	8.30 p.m.	Tues., Thurs., & Sat.
Arrive Port-aux-Basques	6.00 a.m.	Wed., Fri., & Sun.
Leave Port-aux-Basques	7.45 a.m.	Wed., Fri., & Sun.
Arrive St. John's, Nfld.	noon	Thurs., Sat., & Mon.

H. J. RUSSELL, General Manager.....St. John's
 GEO. COBB, Superintendent, Western Division.....Bishop's Falls
 W. FITZPATRICK, Superintendent, Eastern Division.....St. John's
 T. J. ROLLS, General Freight Agent.....St. John's
 F. E. PITTMAN, General Passenger and Ticket Agent.....St. John's

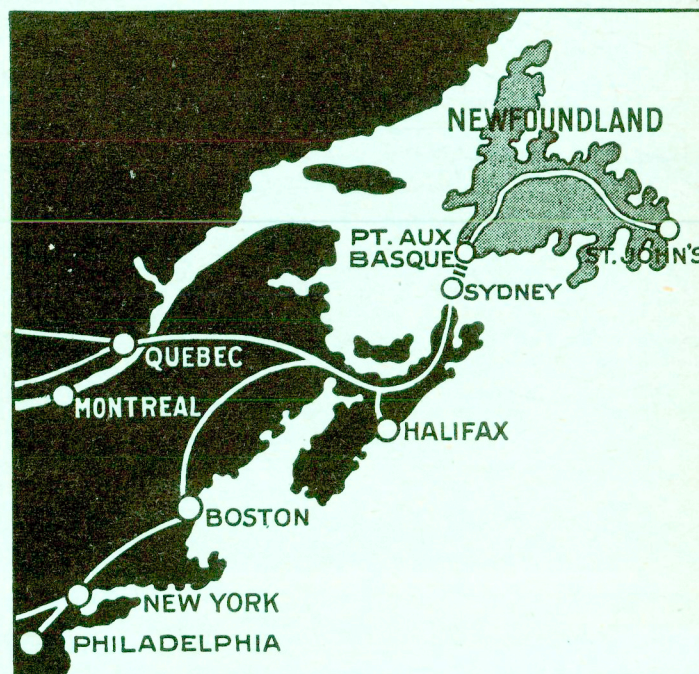
PRINTED IN CANADA

1932

(Effective June to December)

NEWFOUNDLAND RAILWAY

RAILWAY AND STEAMSHIP SYSTEM



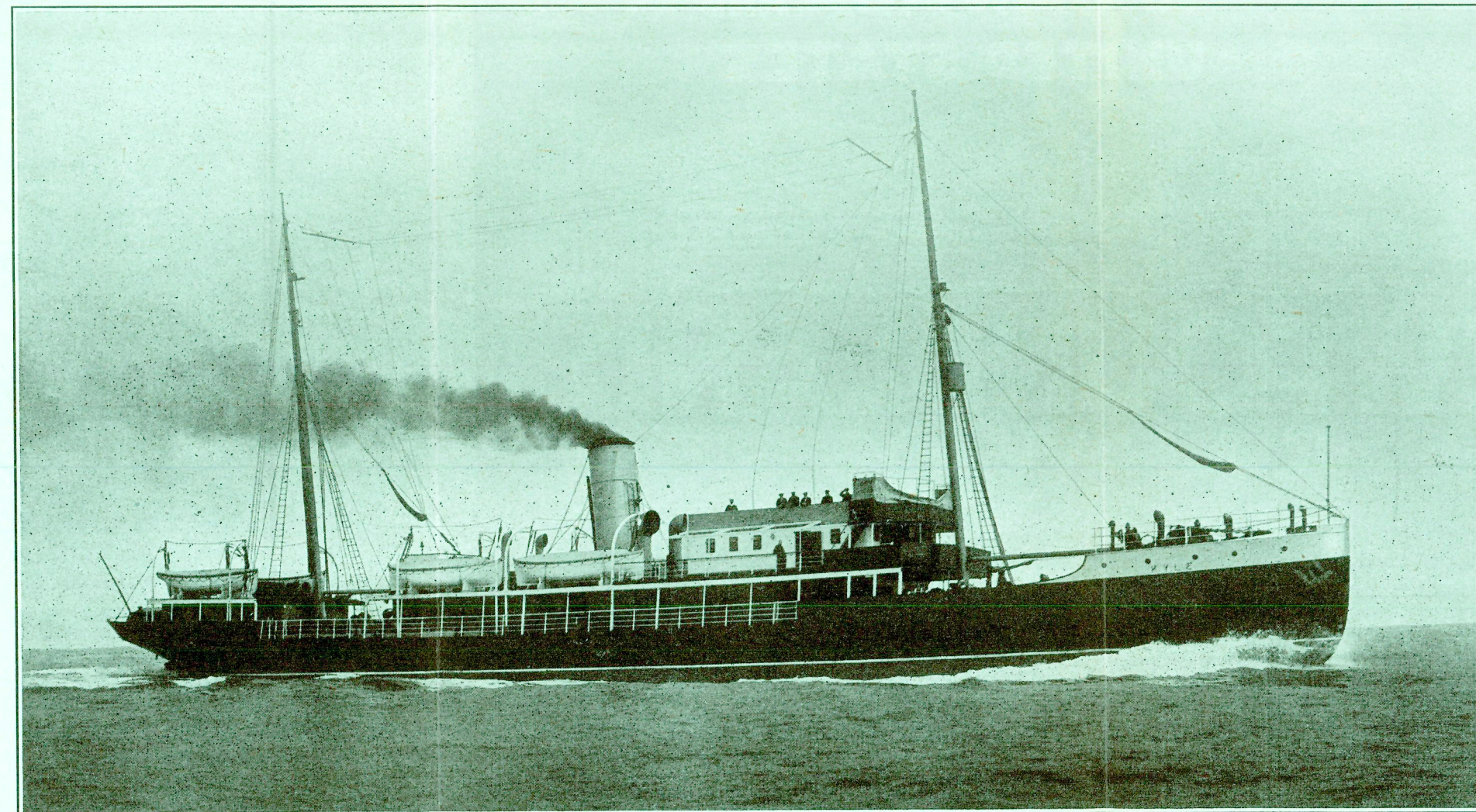
F. E. PITTMAN

GENERAL PASSENGER AND TICKET AGENT

HEAD OFFICE:

ST. JOHN'S, NEWFOUNDLAND

SELECT TOURS
 ST. JOHN'S, NFLD., to LABRADOR on S.S. "KYLE"



S.S. KYLE—MODERNLY EQUIPPED—BUILT SPECIALLY FOR LABRADOR ROUTE

SUMMER TOURS

From St. John's, Newfoundland, to Labrador points, as far North as Hopedale (945 miles). Arranged particularly to serve the pleasure and convenience of tourists and local vacationists.

SAILINGS FROM ST. JOHN'S EVERY FORTNIGHT

Steamer calls principal ports along Northern Coast of Newfoundland, and many interesting settlements on Labrador. Round trip occupies less than a fortnight. Rates reasonable.

For reservations and further information, write or cable to: F. E. PITTMAN GENERAL PASSENGER AGENT, NEWFOUNDLAND RAILWAY, ST. JOHN'S, NEWFOUNDLAND

NEWFOUNDLAND RAILWAY

ST. JOHN'S, PORT-AUX-BASQUES AND NORTH SYDNEY

Table with columns for 'GOING WEST-READ DOWN' and 'GOING EAST-READ UP'. Rows include station names like 'St. John's', 'Waterford Bridge', 'Mount Pearl', etc., with associated train numbers and times.

NEWFOUNDLAND RAILWAY

ST. JOHN'S, PORT-AUX-BASQUES AND NORTH SYDNEY

Table with columns for 'GOING WEST-READ DOWN' and 'GOING EAST-READ UP'. Rows include station names like 'St. John's', 'Waterford Bridge', 'Mount Pearl', etc., with associated train numbers and times.

NEWFOUNDLAND RAILWAY

ST. JOHN'S, PORT-AUX-BASQUES AND NORTH SYDNEY

Table with columns for 'GOING WEST-READ DOWN' and 'GOING EAST-READ UP'. Rows include station names like 'St. John's', 'Waterford Bridge', 'Mount Pearl', etc., with associated train numbers and times.

NEWFOUNDLAND RAILWAY

PLACENTIA AND ARGENTIA BRANCHES

Table with columns for 'GOING WEST-READ DOWN' and 'GOING EAST-READ UP'. Rows include station names like 'Placentia Junction', 'Cranford's Siding', 'Rhody's Pond', etc., with associated train numbers and times.

NEWFOUNDLAND RAILWAY

BAY STEAMSHIP SERVICE (continued)

Table with columns for 'SOUTH COAST AND FORTUNE BAY STEAMSHIP SERVICE' and 'PLACENTIA BAY'. Rows include ship names like 'Argentia', 'Marystown', 'Burlin', etc., with destinations and departure times.

NEWFOUNDLAND RAILWAY

LEWISPORTE TO COOK'S HARBOUR SERVICE

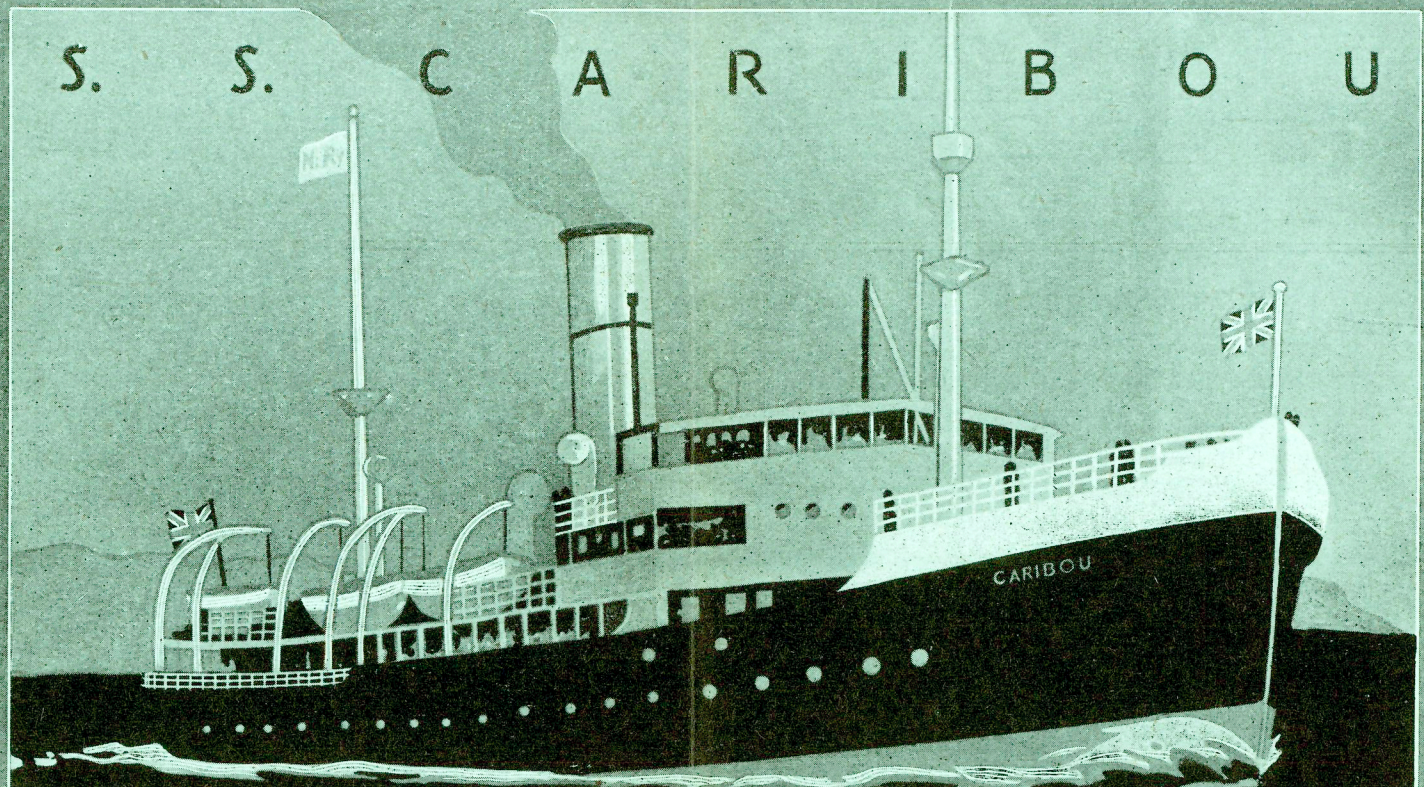
Table with columns for 'LEWISPORTE TO COOK'S HARBOUR SERVICE'. Rows include ship names like 'Lewisporte', 'Exploits', 'Moreton's Harbor', etc., with destinations and departure times.

* Indicates a flag station. Trains stop only when signalled or to leave passengers

NEWFOUNDLAND RAILWAY

Rail	904	Green Bay, Steamer	301
North Sydney to Port-aux-Basques, Steamer	102	St. John's and Labrador (Summer Service)	945
St. John's, Placentia, Port-aux-Basques, Steamer	645	Humbermouth and Battle Harbour Service	379
Placentia Bay, Steamer	290	Total Miles Operated	4,134
Bonavista Bay, Steamer	259		
Notre Dame Bay, Steamer	301		

S. S. C A R I B O U



only **8** HOURS AT SEA BY THE QUICKEST AND BEST ROUTE TO CANADA AND UNITED STATES

NEWFOUNDLAND RAILWAY

USEFUL INFORMATION

Ticket Offices—Passengers are requested to procure tickets at ticket offices and in ample time to enable proper checking of baggage. When tickets are procured on train the Conductor will collect ten (10) cents additional to regular fare.

Tickets, Direction Honored—Tickets of all classes are good for passage only in the direction printed.

Children—Children not exceeding five years of age, accompanied by their parents or friends will be carried free. Children over five and under twelve will be carried at half fare.

Stop-Over will be allowed in exchange on such tickets as entitle holders to stop-over and when so stamped.

Lost Tickets—Proper care should be taken so as to guard against the loss of a ticket, as Railways are not responsible for lost tickets; also, care should be taken of baggage checks, making a memorandum of check numbers for use in case of loss.

Personal Baggage—Consisting of wearing apparel only, and not exceeding 150 lbs. weight, will be checked free on each whole fare ticket, and 75 lbs. free on each half fare ticket. Baggage in excess of free allowance will be charged for, and passengers paying excess charges will receive an excess baggage ticket which must be delivered to Agent with baggage check when baggage is claimed. Storage will be charged on each piece of baggage, either checked or not checked, remaining at stations over twenty-four hours.

Baggage for Flag Stations—Must be claimed at baggage car door immediately on arrival, otherwise it will be carried to next station where agent is on duty and held for further orders.

Caution—It is unlawful to carry dangerous articles, such as gunpowder, matches, etc., in baggage.

Customs—When baggage is examined at Canadian and Newfoundland points, passengers are required to attend to this personally, otherwise baggage will be held by the Customs.

Time of Trains—It is not guaranteed that the starting time or the arriving time of trains shall be as published herein, neither will this Railway be liable for loss or damage arising from delays or detentions, nor will this Railway assume any responsibility beyond its own line.

Reference Marks—
 *—Flag Station—Trains stop only when signalled or when there are passengers to set down, and under the conditions named herein.
 †—Indicates that trains do not stop.

Disputes—Conductors and Agents are governed by rules which they are not authorized to change, therefore, in the event of any disagreement about tickets required, privileges allowed, etc., passengers should pay Conductor's or Agent's claim, obtain receipt and refer the matter to the General Passenger Agent for his decision.

Seat Space—A passenger is entitled only to seat space in car sufficient for one person; baggage and parcels that cannot be placed under car seat or in the passenger's portion of the parcel rack must not be taken into the car. Baggage which cannot be stowed away as above mentioned should be delivered at the baggage room. If found in the car it will be removed.

Obstruction of the Car Aisles Will Not Be Permitted

