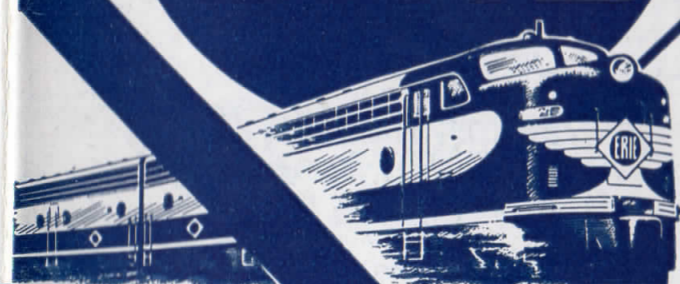


Effective 12:01 A. M.  
January 17, 1959

Effective 12:01 A. M.  
January 17, 1959

# ERIE

# ERIE



## TIME TABLES

## TIME TABLES

*The Scenic Route between*

NEW YORK  
JAMESTOWN  
YOUNGSTOWN  
CLEVELAND  
AKRON  
CHICAGO

FORM 1

*The Scenic Route between*

NEW YORK  
JAMESTOWN  
YOUNGSTOWN  
CLEVELAND  
AKRON  
CHICAGO

FORM 1

## ANY TIME IS VACATION TIME—in Friendly New York

Any time is vacation time, and a wonderful time for a visit to New York City . . . the world's most exciting city. History in action at the U.N. . . sparkling nights at the Theatre and in exotic nightclubs . . . promenades on Fifth Avenue along the fashion shrines of America . . . the quiet beauty of the museums and galleries . . . Cathedrals of all Faiths . . . visits to glamorous ocean liners . . . dining around the world in exotic restaurants . . . all at your beck and call in New York!

Your friendly Erie Ticket Agent invites you! Week-enders and vacationists can now reserve individually scheduled and planned all-expense FRIENDLY TOURS\* to New York City. These packages range from \$16.95 up for all tour features in New York . . . depending on hotel selected and duration of stay.

These tours are on sale daily, with tour features to meet individual requirements.

Personal service is the keynote of FRIENDLY TOURS\*. Everyone is greeted personally on arrival at the Erie Railroad station in Rockefeller Center and is transferred at no additional cost to the hotel. Baggage is handled from Rockefeller Center right to the hotel room—and there is no tipping!

GROUP ECONOMY PLAN—Three or more adults, traveling together and returning on the same ticket, save up to 25% of the round-trip coach fares.

FAMILY PLAN—A family with children saves up to 50% of the adult round-trip fare. Husband-and-wife teams save up to 25%. Inquire of your friendly Travel or Ticket Agent.

*Yes, it pays to travel by train.*

All-expense tour packages can be secured through your friendly Erie Ticket Agents.

Extra savings on ERIE'S LOW rail fares to New York City for use in connection with these tours.



United Nations World Capitol

*Be sure to get your FRIENDLY TOUR\* folder today and ask your Ticket Agent or your Travel Agent about Family Plan fares and Group Economy Plan fares for small, private groups.*

\*Service Mark



## Erie Railroad

# Erie Railroad Erie Railroad

TABLE OF CONTENTS

Equipment of Through Trains... Page 9, 10
Equipment of Detroit, Toledo, Cleveland, Youngstown, Pittsburgh, Washington and Baltimore Trains... 23, 24
Erie Railroad Map... 15, 16, 17, 18
Fares—One-Way and Round-Trip... 7, 8
Fares—Sleeping and Parlor Car... 7, 8
Map of Downtown Chicago... 15, 25
Map of New York City and adjacent area... 18
Motor Coach Service New York... 12
Suggestions to help you read this folder... 5, 6
Ticket Offices and Passenger Stations in Principal Cities... 29, 30
Traffic and Development Representatives... 29, 30
General Information... 5, 6
Adjustment of fares... Holidays
Articles lost on trains... Lost tickets
Baggage regulations... Prepaid orders
Fares for children... Redemption of tickets

Train Service

Binghamton—New York... 13, 14
Binghamton—Chicago... 19, 20
Bradford—Salamanca—Akron—Chicago... 21
Condensed Schedule of Through Trains... 9, 10
Detroit—Toledo—Cleveland—Youngstown—Pittsburgh—Washington—Baltimore... 23, 24
Marion—Chicago... 19, 20
New York—Binghamton... 11, 12
New York—Salamanca—Bradford... 21

INDEX OF STATIONS ON ERIE RAILROAD OR CONNECTING LINES

At Which Trains Are Scheduled To Stop
Numerals Opposite Station Names Indicate Time Table Numbers
Symbols Before Station Explained at Bottom of Page

Table with 6 columns of station names and table numbers. Includes stations like Addison, Akron, Alliquippa, Andover, Arden, Ashland, Aurora, Baltimore, Barborton, Beaver Falls, Belmont, Binghamton, Bradford, Callicoon, Cambridge Springs, Chautauqua Lake, Chester, Chicago, Cleveland, Cocheton, Connellsville, Coraopolis, Corning, Corry, Crown Point, Cuba, Cumberland, Decatur, Deposit, Detroit, East Fifty-fifth St., East Ninety-third St., East Rutherford, Ellwood City, Elmira, Endicott, Englewood, Friendship, Gallion, Geauga Lake, Goshen, Hammond, Hancock, Hankins, Harper's Ferry, Harriman, Hillburn, Hiram, Hoboken, Hokenus, Honestale, Hornell, Howells, Huntington, Jamestown, Jeddito, Kent, Kenton, Lackawaxen, Lee Road-Shaker Hts., Station, Lima, Long Eddy, Lordville, Mahoning, Mahwah, Mansfield, Mantua, Marion, Martinsburg, McKeesport, Meadville, Middletown, Mill Rift, Monroe, Narrowsburg, New Brighton, New Castle, New Hampton, New York, Niles, North Judson, North Randall, Niles, Olean, Otisville, Owego, Ohio City, Passaic, Paterson, Phalanx, Pittsburgh, Pond Eddy, Port Jervis, Ramsey, Randolph, Ravenna, Ridgewood, Rittman, Rochester, Rutherford, Salamanca, Sharon, Shohola, Silver Spring, Skimmers, Sloatsburg, Solon, Southfields, Sparrowbush, Suffern, Susquehanna, Toledo, Tuxedo, Union City, Wadsworth, Waldwick, Wampum, Warren, Washington, Waverly, Wellsville, Westcolong Park, Youngstown.

ERIE TICKET OFFICES AND PASSENGER STATIONS IN PRINCIPAL CITIES

Table listing ticket offices and passenger stations in principal cities. Includes locations like Akron, Binghamton, Chicago, Cleveland, Detroit, Hamilton, Huntington, Jamestown, Kent, Lima, Mansfield, Marion, Meadville, Middletown, New York, Niles, Olean, Passaic, Paterson, Port Jervis, Ridgewood, Salamanca, Sharon, Warren, Youngstown, with contact information and agent names.

Not on the Erie Railroad—See schedule indicated.

No tickets sold or Baggage Checked at this station.



Suggestions to help you read this folder

Reading of Tables

On all tables, the schedule of each individual train is shown in a separate column. Each train has an operating number which appears at the top of the schedule column.

Train times from 12:01 a.m. (Midnight) to 12:00 Noon inclusive, are printed in light-faced figures; 12:01 p.m. (Noon) to 12:00 Midnight are printed in dark-face throughout the timetable.

Trains make regular stops only at stations where time figures appear in column opposite the station name. Symbols are opposite some schedule figures. They are important. They indicate exceptions and should be checked carefully with the explanation under Reference Notes at the bottom of each page.

When trains are shown as Stopping Conditionally at a Station, passengers should advise Station Agent, in advance, of their intention to board train or notify Conductor of intention to leave train, as case may be.

On main line Table 4, where a station name is indented, that station is located on a Branch Line or connecting service.

The equipment of principal trains is shown on pages 9, 10, 23 and 24. Coach equipment is carried on all trains.

Any Erie Ticket Agent or representative will be glad to assist you with information and reservations.

General Information

Erie Lines east of and including Ohio City, Ohio, are shown in EASTERN STANDARD TIME. Lines west of Ohio City, Ohio, in CENTRAL STANDARD TIME.

THIS COMPANY IS NOT RESPONSIBLE FOR ERRORS in timetables, inconvenience or damage resulting from delayed trains, or failure to make connections; schedules and equipment shown herein are subject to change without notice.

The term HOLIDAYS (unless covered by special note under schedule) refers to New Year's Day, Lincoln's Birthday, Washington's Birthday, Memorial Day, Independence Day, Labor Day, Columbus Day, Election Day, Veteran's Day, Thanksgiving and Christmas.

The term MAJOR HOLIDAYS (as shown in the notes on various tables) refers to Thanksgiving Day, Christmas Day, New Year's Day, Memorial Day, Independence Day and Labor Day.

CHILDREN under five years of age are carried free when accompanied by parent or guardian; five years of age and under twelve, half fare; twelve years of age and over, full fare.

Should ANY MISUNDERSTANDING arise with conductors or agents, pay the fare required, take receipt and communicate with Passenger Traffic Manager, Midland Bldg., Cleveland, Ohio.

TICKETS UNUSED or partly used will be redeemed under tariff regulations at proper value. Railroads are not responsible for lost tickets or baggage checks.

A STOP-OVER within final limit will be granted on tickets sold at regular fares at all stations on the Erie Railroad (with certain exceptions in the New York suburban area).

WHEN ARTICLES ARE LOST on trains or left in waiting rooms, owners should apply at once to Agent at station where they leave train or address Manager, Baggage Traffic, Erie Railroad Company, Hoboken, N. J., giving full description of property, stating date of loss and train number.

150 pounds of baggage may be checked on adult tickets and 75

pounds on half fare tickets subject to tariff stipulations as to contents, weight, value and size. A service charge of 25c will be collected for each piece of hand baggage and 50c for each trunk.

Personal baggage is wearing apparel, toilet articles (except liquid) and personal effects in actual use and necessary and appropriate for the wear, use, comfort and convenience of the passenger for the purpose of the journey and not intended for other persons or for sale. Articles which may not be included in personal baggage are shown in published tariff which is on file at stations.

Baggage to be checked should be delivered at stations reasonably in advance of train departure. The railroad cannot guarantee to forward baggage on same train with passenger and when necessary will be forwarded on other trains. To facilitate prompt receipt of baggage at destination, passengers are urged to arrange for forwarding on a preceding train.

A charge is made for storage of baggage at destination when it is not claimed within full time limit.

BAGGAGE WILL NOT BE REMOVED FROM TRAINS AT STATIONS WHEN AGENT IS NOT ON DUTY TO RECEIVE IT.

ALL BAGGAGE CHECKED IN BAGGAGE CAR TO OR FROM NEW YORK CITY will be sent to Barclay Street Station.

BAGGAGE CHECKED FOR HANDLING IN BAGGAGE CAR WILL NOT BE CARRIED ON MOTOR COACHES.

BAGGAGE INSURANCE may be purchased at principal Erie Ticket Offices. It insures your baggage and personal effects for your entire trip anywhere in the world. Minimum premium twenty-five cents. Ask Ticket Agent for full particulars.

BAGGAGE may be checked through to house address, hotel, steamship dock, etc., at destination. Reliable transfer companies perform this service at nominal charges at all principal cities.

HAND BAGGAGE in coaches or Pullman cars is restricted to what can be conveniently placed in accommodations purchased by passenger. It is urged that passengers carry with them only such baggage as required for their immediate needs. Other baggage may be checked in baggage car at a nominal charge.

RED CAP PORTER SERVICE is available at principal stations at a charge of 25c, except at Cleveland Union Terminal where charge is 35c, for each bag or parcel. Carriers' liability is limited to not more than \$50.00 for each bag or parcel unless greater value declared in writing on form provided for that purpose.

DECLARATION form available at baggage room. An additional charge of 20c per bag or parcel will be made for each \$100.00 or fraction thereof, declared in excess of \$50.00. A bag or parcel having value in excess of \$500.00 will not be accepted under any circumstances.

FOR YOUR OWN SAFETY—don't get on or off a train in motion; wait for a full stop. Keep hand baggage out of car aisles. Walk carefully when entering or leaving train; high-heeled shoes are sometimes a cause of tripping or stumbling on car steps. Don't stand or walk close to the railroad track; look both ways before starting across.

PREPAID TICKET ORDERS—for patrons who do not wish to send money by mail, Erie Railroad Ticket Agents sell prepaid ticket orders for the delivery of transportation, rail and Pullman, from practically all points in the United States, Canada and Mexico. These orders may also include the furnishing of cash.

In an emergency, arrangement may be made for the delivery of transportation by telegraph or telephone without charge except when commercial wires are used. Consult Ticket Agents for details.

FOLLOWING RAILROAD AND PULLMAN FARES For information only. Federal tax not included. Subject to change without notice.

Table with columns for 'Between' and 'And' stations, and sub-sections for NEW YORK, BINGHAMTON, and YOUNGSTOWN. It lists fares for various routes and includes Pullman rates for different classes of service.

Table with columns for 'Between' and 'And' stations, and sub-sections for JAMESTOWN, CLEVELAND, and CHICAGO. It lists fares for various routes and includes Pullman rates for different classes of service.

RATES FOR UPPER BERTH, DRAWING ROOM, COMPARTMENT, DOUBLE BEDROOM OR ROOMETTE IN SLEEPING CARS. This table provides detailed pricing for different types of sleeping accommodations on the trains.

Note: Single occupancy sections available in certain cars on certain trains. Consult ticket agents. Limit six months, except as otherwise indicated. For section occupied by two passengers, but with lower berth only prepared for night service.

TABLE 1 CONDENSED TABLE OF THROUGH TRAINS NEW YORK, CLEVELAND AND CHICAGO (FOR LOCAL TRAINS AND INTERMEDIATE TIME OF THROUGH TRAINS SEE LOCAL TABLES)

Air-Conditioned Trains—Air-conditioned equipment has been assigned to regular sections of trains as shown herein. Every effort will be made to provide it as specified, but the right is reserved to employ non-air-conditioned cars as necessitated by volume of traffic or emergencies.

Main table of train schedules and fares, organized by direction (WESTBOUND and EASTBOUND) and train number (1-6, 7-9, 8). It lists departure times, equipment types, and fares for routes between New York, Cleveland, and Chicago.

AA Stops to receive passengers. AD Stops to discharge passengers from Port Jervis and west. Motor Coach service operates direct to and from trainside Hoboken. On Saturdays, Sundays and Major Holidays, Ferry leaves Barclay St. at (7.45 P. M.). On Saturdays, Sundays and Major Holidays, Ferry arrives Barclay St. at (8.42 A. M.).

NEW YORK-BINGHAMTON

TABLE 2 WESTBOUND

For additional train service from Hoboken not shown in this table, please refer to local time tables. Hudson and Manhattan Tube Trains operate between New York and Erie-Lackawanna Station in Hoboken. To Erie-Lackawanna Station, Hoboken—From Downtown New York—Train marked "Hoboken"—Fare 25 cents. From Uptown New York—Train marked "Hoboken"—Fare 25 cents.

Table with columns for Miles from New York, Eastern Standard Time Read Down, and various train numbers (51, 53, 71, 1, 73, 55, 57, 59, 77, 61, 5, 7, 9) with corresponding departure and arrival times.

ALL ABOVE PASSENGER TRAINS ARE DIESEL POWERED

All Conditional Stops are for Revenue Passengers Only. f Stops on signal to receive and discharge revenue passengers. d Stops to discharge passengers. BC Stops Friday only to discharge passengers. BH Stops Paterson and Ridgewood to receive passengers. BX Will not run west of Suffern on Holiday, Feb. 23. BJ Mon. to Fri. Flag stop Passaic to receive passengers for Binghamton and west. Sat. & Sun. make reg. stop. BL Stops Ramsey Saturdays only at 4.49 P. M. to discharge passengers. BN Stops Cochection to discharge passengers from Ridgewood and east and take on passengers for Binghamton and West.

BP Stops Paterson and Ridgewood to receive passengers. BR Flag stop Passaic and Suffern to receive passengers for Binghamton and west. BU Bus operates between Narrowsburg and Honesdale. BX Will not run west of Suffern on Holiday, Feb. 23. BZ Will not run west of Suffern on Saturdays. 1 On Saturdays, Sundays and Major Holidays, Ferry leaves Barclay St. at (7.45 P. M.). 2 On Saturdays Ferry for Train 57 Lv. (3.45 P. M.).

TABLE 3 EASTBOUND

BINGHAMTON-NEW YORK

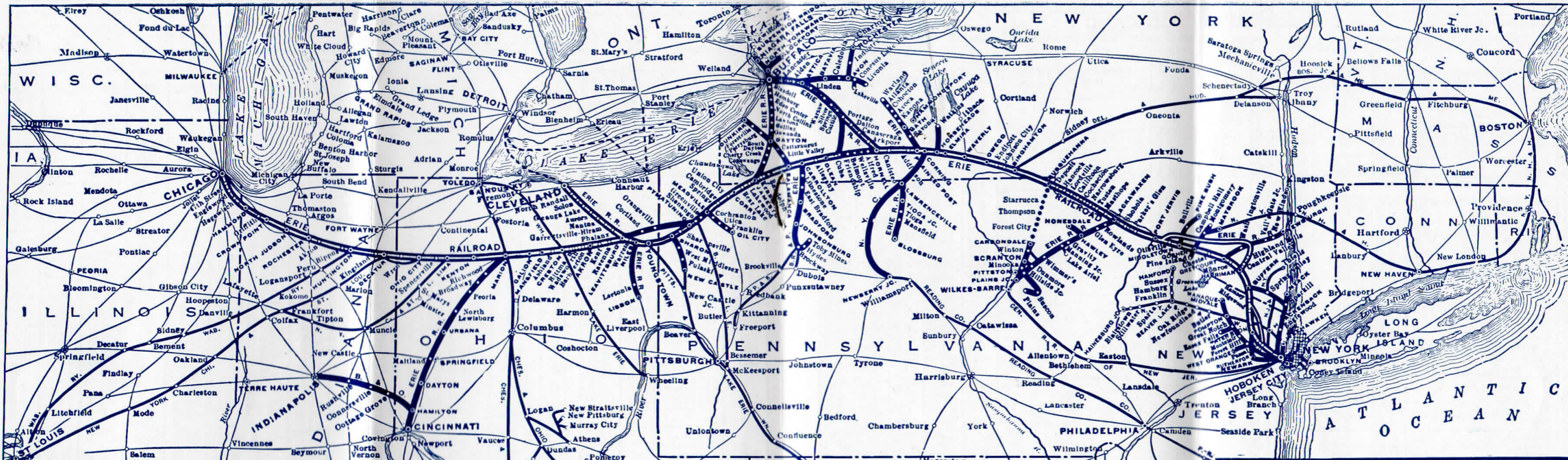
For additional train service to Hoboken, not shown in this table, please refer to local time tables. Hudson and Manhattan Tube Trains operate between New York and Erie-Lackawanna Station in Hoboken. From Erie-Lackawanna Station, Hoboken—To Downtown New York—Train marked "Hudson Terminal"—Fare 25 cents. To Uptown New York—Train marked "33rd Street"—Fare 25 cents.

Table with columns for Miles from Chicago, Eastern Standard Time Read Down, and various train numbers (50, 52, 70, 6, 54, 76, 56, 58, 78, 2, 60, 80, 8) with corresponding departure and arrival times.

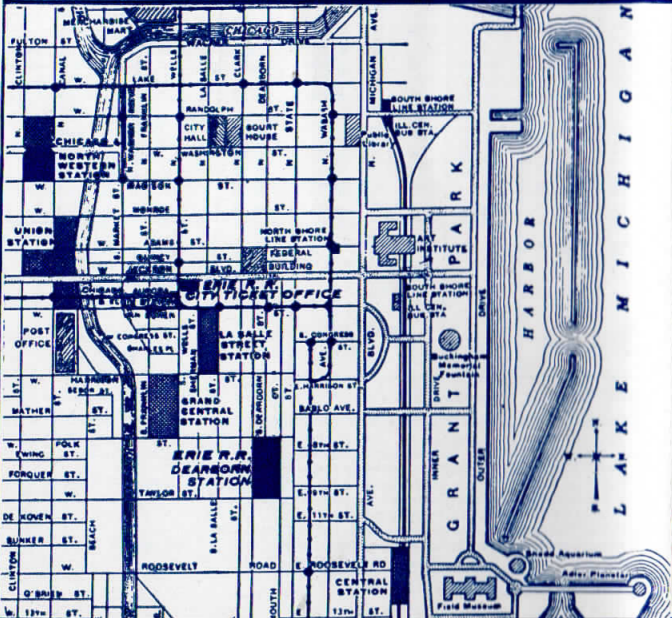
ALL ABOVE PASSENGER TRAINS ARE DIESEL POWERED

All Conditional Stops are for Revenue Passengers Only. f Stops on signal to receive and discharge passengers. d Stops to discharge passengers. BC Stops on Holidays only. CB Stops Fridays only to discharge passengers. CD Stops to discharge passengers from Binghamton and west and receive passengers for Ridgewood and east. CE Stops at Middletown to discharge passengers from Binghamton and west. On Saturdays, Sundays and Holidays makes regular stop to receive and discharge passengers. CH Makes regular stop at Goshen on Saturdays, Sundays and Holidays. CK Stops Saturdays only, arrives Hoboken (12.55 P. M.)

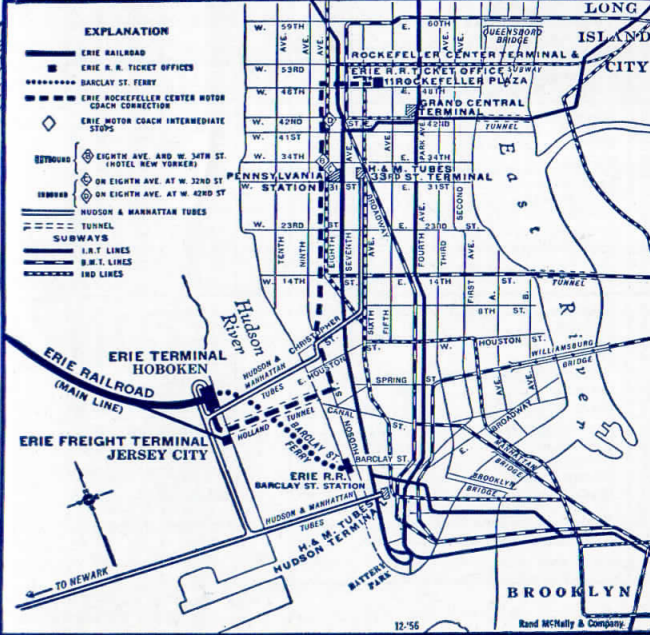
CL Stops Ridgewood and Paterson to discharge passengers from Port Jervis and west. CM Regular stop at Suffern daily. On Saturdays, Sundays and Holidays stops to discharge passengers from west of Port Jervis. CN Stops Passaic to discharge passengers from west of Port Jervis. CO Stops on Sundays only to discharge passengers from Port Jervis and west. CP Bus operates between Narrowsburg and Honesdale. CX Will not run west of Suffern on Sundays. CY Stops Saturdays only to receive or discharge passengers. 1 On Saturdays, Sundays and Major Holidays, Ferry arrives Barclay St. at (8.42 A. M.). 2 On Saturdays, Ferry arrives Barclay St. at (4.42 P. M.). 3 Will not run Holiday, Feb. 12. 4 Will run Holiday, Feb. 12. # Will not run west of Suffern on Holidays.



**MAP OF DOWNTOWN CHICAGO**  
 Showing Business District, "Loop," and Railroad Stations. For detailed information see page 25.



**MAP OF NEW YORK CITY AREA**  
 showing Erie Rockefeller Center Motor Coach, Barclay Street Ferry, H. & M. Tube routes, Erie Terminals and Ticket Offices.



**ERIE RAILROAD AND CONNECTIONS**  
 ..... Freight Service with Erie Railroad Power



TABLE 4 WESTBOUND

BINGHAMTON-CHICAGO

EASTBOUND

Table with columns for Miles from New York, Eastern Standard Time Read Down, Daily, 1, 5, 7, 9, Central Standard Time Read Down, 2, 8, 6, 628, 630, and Miles from Chicago. It lists train routes and schedules between New York and Chicago.

ALL ABOVE PASSENGER TRAINS ARE DIESEL POWERED (SEE REFERENCE NOTES ON PAGE 22)

TABLE 5 NEW YORK-SALAMANCA-BRADFORD-CHICAGO

Table with columns for WESTBOUND Read Down (5-Bus, 1-Bus), Via Salamanca and Limousine Service, EASTERN STANDARD TIME, and EASTBOUND Read Up (Bus-2, Bus-6). It details routes and schedules between New York, Salamanca, Bradford, and Chicago.

IMPROVED SLEEPING CAR SERVICE

WITH ROOMETTES, BEDROOMS AND SECTIONS ON TRAIN NO. 7-9 DAILY BETWEEN

NEW YORK and BINGHAMTON, ELMIRA, CORNING, HORNELL, OLEAN, SALAMANCA

Lv. New York (Rockefeller Center Bus) 11.20 P.M. (EST)

Lv. New York (Barclay St. Ferry) 12.15 A.M. (EST)

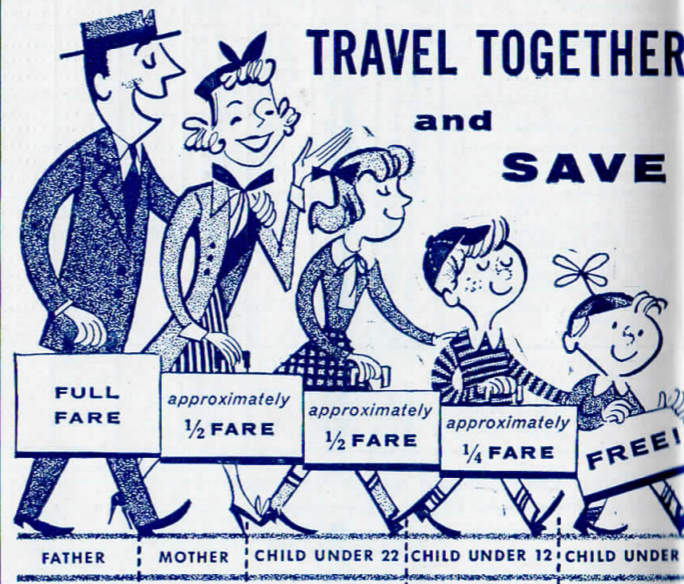
Lv. Hoboken (ERIE No. 7-9) 12.45 A.M. (EST)

( Sleeper open for occupancy in Hoboken Station at 9.30 P.M. EST )

For Complete Schedule See Pages 19 and 20

REFERENCE NOTES

- All Conditional Stops are for Revenue Passengers only.
Stops on signal to receive and discharge passengers.
For additional service between Cleveland and Youngstown, see Table 8.
Via Erie Railroad Limousine Service between Salamanca and Bradford.
Stops Andover, Belmont and Friendship to discharge passengers from New York.
Train 8 stops to discharge passengers from Hammond and west.
Stops Cuba to discharge passengers from Elmira and east, and to receive for Jamestown and west.
Stops to discharge passengers from Meadville and east, and to receive passengers for Akron and west.
Stops Endicott to discharge passengers from Ridgewood and east.
Stops on signal Union City and Cambridge Springs to discharge passengers from Jamestown and east and to receive for Youngstown and west.
Train 8 stops Wadsworth and Barberton to discharge from Gallion and west, and to receive for Youngstown and east.
Stops to discharge passengers from Youngstown and east, and to receive passengers for Mansfield and west.
Stops to discharge passengers from Meadville and east, and to receive passengers for Gallion and west.
Stops daily to discharge passengers from Youngstown and west, and to receive for Binghamton and East.
Stops to discharge passengers from Jamestown and west, and to receive for Elmira and east.
Stops Cambridge Springs and Union City to discharge passengers from Youngstown and west and to receive for Binghamton and east.
Stops to discharge passengers from Chicago.
Stops Waverly and Endicott to discharge passengers from Jamestown and west.
Erie limousine service, operates between Erie Railroad Station, Salamanca and Emery Hotel, Bradford.
Trains 7 and 9 stop to discharge passengers from east of Hammond.
Stops on signal to receive passengers for Chicago. No Baggage Checked.
Stops on signal to discharge passengers from Chicago and receive passengers for Youngstown and east. No Baggage Checked.
No Baggage Checked.
On Saturdays, Sundays and Major Holidays, ferry arrives Barclay St. at (8.42 A. M.).
On Saturdays, Sundays and Major Holidays, ferry leaves Barclay St. at (7.45 P. M.).
In connection with the bus service, the Erie Railroad acts as agent only and is not responsible beyond its own line, except as such responsibility may be imposed by law with respect to baggage.
See Table 4 for stops of Motor Coach in New York City.



use Erie's family fare plan

Traveling together on the Erie is as inexpensive as it is relaxing. You save approximately 50% of round-trip cost with the Family Fare Plan. And there's no traffic to fight... you arrive safe and relaxed. Also applies to husband and wife traveling together.

Call your friendly Erie ticket agent for details



TABLE 8 DETROIT—TOLEDO—CLEVELAND—YOUNGSTOWN—PITTSBURGH—WASHINGTON—BALTIMORE

Table with columns for train numbers (624, 630, 628, 686, 629, 627, 625, 623), times, and stations. Includes sub-tables for Eastern Standard Time and Read Down directions.

NEW DIESEL POWER ON ALL TRAINS BETWEEN CLEVELAND, YOUNGSTOWN AND PITTSBURGH. TRAINS 623 AND 624—Erie Parlor-Diner between Cleveland and Pittsburgh. All trains carry coaches.

All Conditional Stops are for Revenue Passengers only. f Stops on signal to receive and discharge revenue passengers. GG Stops to discharge passengers from Cleveland and to receive passengers for New Castle and east.

BAGGAGE NOTES N. B.—No baggage checked.

Holidays in the above table refers to the observance of New Year's Day, Memorial Day, Independence Day, Labor Day, Thanksgiving Day and Christmas Day.

Relax on a train—rent a new Hertz car there. TRY THE HERTZ RAIL-AUTO TRAVEL PLAN!



Here's the way to go places. Stretch out, get comfortable on a fast train. Arrive refreshed. Then, step into a clean, dependable new Hertz car.

That's traveling! Easy traveling, too. Your ticket agent will reserve your Hertz car when you buy your ticket. No charge. Low Hertz rates (very low by the week) cover all gasoline, oil and proper insurance.

Sleep the miles away



For added comfort, ask your coach porter for a fresh, clean, soft pillow.

Another Erie Service on the Erie Limited and the Lake Cities

ONLY 25c

(Pillows can be rented for your overnight journey)

Lay-over sleeping cars at Akron and Youngstown

Lv. Youngstown 11:45 p.m. EST
Lv. Akron \*1:15 a.m. EST
Ar. Chicago 8:20 a.m. CST (Dearborn Station)

FOR CHICAGO TRAVELERS

You can board your modern sleeper to Chicago at the Erie Station in Akron (except on Saturday nights) or Youngstown at 9:30 p.m. Arrive in Chicago refreshed after a restful night. Smooth diesel power

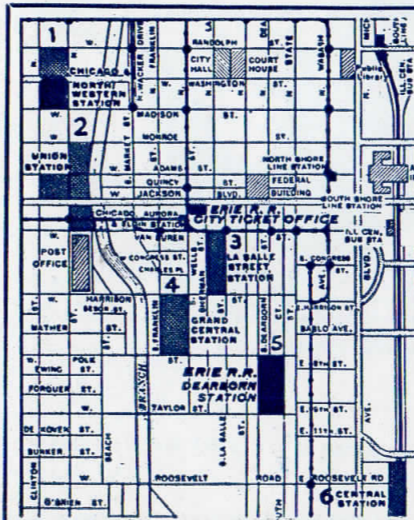
all the way. On your return trip you can occupy your sleeping car in Akron until 8:00 a.m.

These are all ultra-modern sleeping cars with year 'round air-conditioning. They offer the most modern and luxurious accommodations for overnight travel.



Erie Railroad

For your convenience, day service is also provided to Chicago and day and night service to New York.



CHICAGO PASSENGER STATIONS

Number Indicates Location On Map. DEARBORN STATION (5) Polk and Dearborn Sts. ERIE - SANTA FE. CHICAGO & EASTERN ILLINOIS - CHICAGO & WESTERN INDIANA - GRAND TRUNK - MONON ROUTE - WABASH

TRANSFERRING LUGGAGE AND PASSENGERS BETWEEN DEPOTS IN CHICAGO

Be sure to use the transfer coupon—included as part of your through ticket. It entitles you to transfer service from your incoming depot to your outgoing depot.

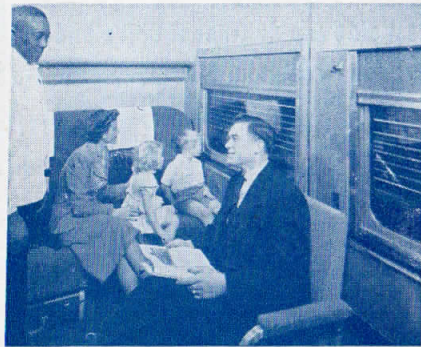
Passengers holding tickets through Chicago may deliver their hand luggage to the Railroad Transfer Service desk at the incoming depots for delivery to the parcel checking rooms of the outgoing depots at cost of 25c per piece, plus the usual parcel checking fees, providing there is three hours or more between trains.

Ask any Ticket Agent about RAILROAD TRANSFER SERVICE

### LUXURY AND COMFORT TO CHICAGO OR NEW YORK

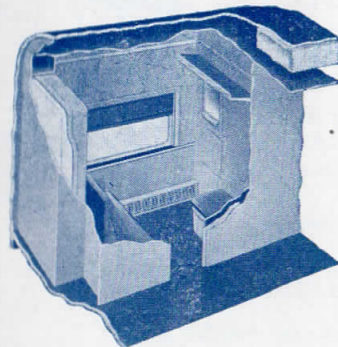
**ULTRA-MODERN, ALL-ROOM SLEEPING CARS**—Here's the latest in comfort and convenience for modern sleeping car service. Your trip will be more restful and enjoyable in these

all-room sleeping cars. Convenient over-night schedules from principal cities to New York and Chicago and return. Also through sleeping cars.



**BEDROOM**

Utmost roominess for one or two adults. Two movable, deep-cushioned chairs for lounging. At night, one or two pre-made beds are quickly ready for a refreshing night's sleep. Individual lighting and heating or air-conditioning controls—circulating ice water—ample wardrobe and luggage space. Two connecting bedrooms can be made into one large room with four beds for family accommodations.



**ROOMETTE**

Ideal for one person. Counter-balances and a "fold-in-the-wall" bed permit passenger to raise and lower bed easily. Individual heat and air-conditioning control. Wide picture windows let you enjoy the scenery.

### 3 FAST, CONVENIENT ROUTES SERVING NEW YORK CITY



#### ROCKEFELLER CENTER MOTOR COACH

Direct service between the Hoboken Station and Rockefeller Center Terminal in midtown Manhattan, via the Holland Tunnel. Intermediate stops: inbound, along Eighth Avenue at W. 32nd Street and at W. 42nd Street; outbound, W. 34th Street at Eighth Avenue (Hotel New Yorker).

This is a special service provided by the Erie exclusively for the convenience of passengers traveling between New York City and points west of Goshen, New York. Ordinary hand baggage is carried free and transferred for you at all stops. Please buy motor coach tickets, when you buy your rail tickets, or from your conductor (they are not sold after arrival in Hoboken). The fare is one-dollar, including tax.



#### BARCLAY STREET FERRY

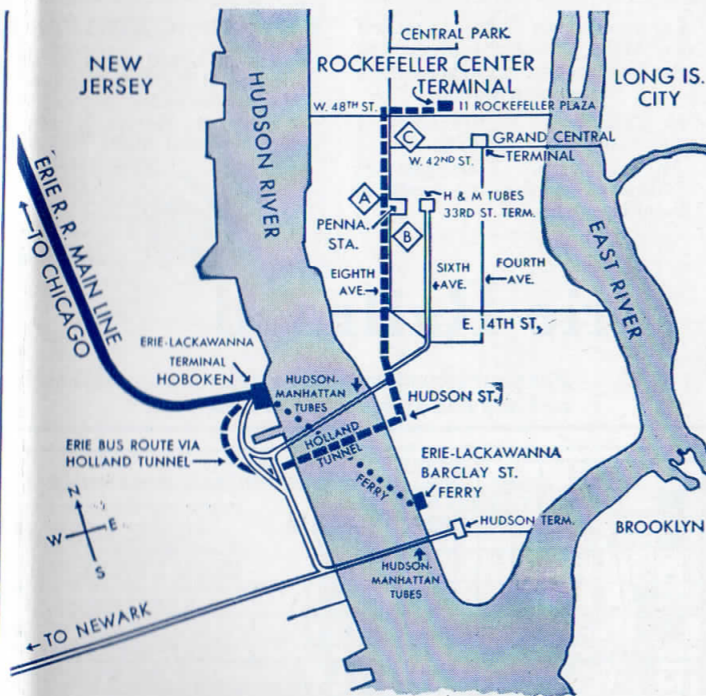
You can enjoy frequent, direct ferry boat service between Barclay Street in downtown Manhattan, and the Erie-Lackawanna Station in Hoboken. Schedules are arranged to connect with all through trains.



#### HUDSON & MANHATTAN TUBE TRAINS

Frequent service via H & M Tube Trains to 33rd Street and 6th Ave., in midtown Manhattan or downtown to Hudson Terminal at Church St. is available at Hoboken.

For further details, see your Erie ticket agent or conductor.



LEGEND—MOTOR COACH SERVICE

Route between Rockefeller Center and Hoboken  
Intermediate Stops in New York City

Outbound

Inbound

- W. 34th St. at 8th Ave. (Hotel New Yorker)
- 8th Ave. at W. 32nd St.
- 8th Ave. at W. 42nd St.

## ERIE RAILROAD COMPANY

General Offices: (Midland Building, Cleveland 15, Ohio, (Telephone Cherry 1-8400)  
(Hudson Terminal, 50 Church Street, New York 7, N. Y., (Telephone Worth 4-4500)  
(South La Salle Building, 327 South La Salle Street, Chicago 4, Ill. (Telephone Harrison 7-4160)

### TRAFFIC DEPARTMENT

D. R. THOMPSON, Vice-President, Cleveland  
W. W. THOMS, Assistant Vice-President, Staff, Cleveland  
PASSENGER—Sales and Service—Rates  
A. G. OLDENQUIST, Passenger Traffic Manager, Cleveland

F. J. WILD, General Passenger Agent, Cleveland.  
R. E. TOWNS, Assistant General Passenger Agent, Chicago.  
V. F. GREEN, Assistant General Passenger Agent, Youngstown.  
G. W. KROM, Assistant General Passenger Agent, New York.  
A. W. MEINKE, Manager Mail, Baggage and Express Traffic, Hoboken.  
J. VAN DER VELDE, Assistant to Passenger Traffic Manager, Cleveland.  
J. M. COLLINS, Manager, Dining Car Department, Jersey City.

### FREIGHT—Sales and Service

E. J. DEAN, Assistant Vice-President, New York.  
G. W. MADSEN, Freight Traffic Manager, New York.  
B. F. CONWAY, Freight Traffic Manager, Piggy Back & LCL Traffic, " "  
E. W. KEILEY, Asst. Freight Traffic Manager, " "  
E. C. ADLER, General Eastern Freight Agent, " "  
F. K. CORLETT, Assistant General Freight Agent, Buffalo.  
H. H. HECK, General New England Agent, Boston.  
E. T. BUTLER, Freight Traffic Manager—Central Territory, Cleveland.  
D. C. KELSEY, Asst. General Freight Agent, Cleveland.  
J. L. TADEN, Assistant General Freight Agent, Cincinnati.  
J. L. CHAPMAN, Assistant General Freight Agent, Pittsburgh.  
C. F. LAUER, Assistant General Freight Agent, Youngstown.  
C. R. MARTIN, Assistant Vice-President, Chicago.  
J. A. RUSSELL, Western Traffic Manager, Los Angeles.  
C. G. ANDREWS, Freight Traffic Manager, Chicago.  
L. E. NEWMAN, Assistant General Freight Agent, Detroit.  
H. W. GRAY, Assistant General Freight Agent, " "  
W. C. OTTEN, Foreign Freight Traffic Manager, New York.  
P. J. VAN NESS, Foreign Freight Agent, " "  
C. C. MITCHELL, Foreign Freight Agent, Chicago.  
A. B. CONNELL, Export and Import Agent, New York.  
P. J. NAPOLI, Perishable Traffic Manager, Pier 28, N. R., New York.

### FREIGHT—Rates

E. C. HALLBERG, Assistant Vice-President, New York.  
F. H. KLITZ, Freight Traffic Manager, Chicago.  
J. H. SISCO, Assistant Freight Traffic Manager, " "  
THOMAS GILPIN, General Freight Agent, " "  
F. K. NOONBURG, Assistant General Freight Agent, " "  
C. L. SMITH, Assistant General Freight Agent, " "  
F. J. NELSON, Chief of Tariff Bureau, " "  
R. M. TERHUNE, Chief of Divisions Bureau, " "

### COAL AND COKE

G. A. LAMB, Coal Traffic Manager, Cleveland.  
R. T. PHILLIPS, General Coal Freight Agent, Cleveland.  
A. E. BARKALOW, Coal Freight Agent, New York.  
J. A. MUCHA, Coal Freight Agent, Buffalo.  
W. N. STENFELT, Coal Freight Agent, Chicago.  
M. S. SWEENEY, Coal Freight Agent, Pittsburgh.

### INDUSTRIAL DEVELOPMENT

D. M. LYNN, Assistant Vice-President, Cleveland.  
L. J. SLACK, Industrial Commissioner, New York.  
R. W. SCHEUCH, Industrial Agent, " "  
D. F. MACKERLEY, Industrial Engineer, " "

### TRAFFIC DEPARTMENT REPRESENTATIVES

#### SALES AND SERVICE

- Akron 8, Ohio—Erie Station, J. P. CLARK, Division Passenger Agent. (Telephone Blackstone 3-8812)
- H. F. KEELAN, General Agent. (Telephone Hemlock 4-8194-4-8195) 80 East Exchange St.
- Albany 7, N. Y.—D. & H. Bldg. (Telephone 4-6051)
- J. E. CAMPBELL, General Agent.
- Atlanta 3, Ga.—Healey Bldg. (Telephone Jackson 1-2135)
- J. P. DREW, General Agent.
- Baltimore 2, Md.—Washington, D. C. 1218-19 Munsey Bldg. (Telephone Baltimore—PLaza 2-8691; Washington—National 8-6075)
- G. A. KIEL, General Agent.
- Birmingham 3, Ala.—927-928 Brown-Marz Bldg., 2000 First Ave., N. (Telephone Alpine 1-1327)
- W. M. L. THORNTON, General Agent.
- Boston 14, Mass.—150 Causeway St. (Telephone Capitol 7-3764)
- H. F. HECK, Gen. New Eng. Agt. General Agent.
- Buffalo 6, N. Y.—1221 Clinton St. (Telephone South 150)
- F. K. CORLETT, Asst. Gen. Freight Agt. (Telephone Alpine 1-1327)
- Chicago 4, Ill.—327 South La Salle St. (Telephone Harrison 7-4160)
- R. A. JOHNSON, City Passenger Agent. L. E. NEWMAN, Asst. Gen. Frt. Agt.
- Cincinnati 2, O.—931 Engletr Bldg. (Telephone Main 1-3420 1-3421)
- J. L. TADEN, Asst. Genl. Frt. Agt.
- Cleveland 15, O.—Midland Bldg. (Telephone Cherry 1-8400)
- D. C. KELSEY, Asst. Gen. Frt. Agt.
- Columbus 15, O.—Atlas Bldg., 8 East Long Street. (Telephone Capitol 4-7331)
- C. A. PARKER, General Agent.
- Dallas 1, Tex.—1509 Main Street. (Telephone Riverside 2-7352)
- J. A. MOORE, General Agent.
- Dayton-Springfield 2, O.—95 S. Main Bldg. (Telephone Dayton, Baldwin 3-8481)
- C. P. UNDERWOOD, Div. Frt. Agt.
- Des Moines 9, Ia.—Hubbell Bldg., 902 Walnut Street. (Telephone Cherry 4-0018)
- J. L. FISCHER, General Agent.
- Detroit 2, Mich.—General Motors Bldg. (Telephone Trinity 5-2360-61)
- H. W. GRAY, Assistant Genl. Frt. Agt.
- Edmonton, Alberta, Canada 13743 115th Ave. (Telephone 55-3509)
- GUY M. GREENWOOD, Comm. Agt.
- Elmira, N. Y.—Erie Station. (Telephone 2-0377)
- Hoboken, N. J.—Erie-D. L. & W. Terminal. (Telephone Oldfield 3-6400)
- DONALD CAMPBELL, Div. Pass. Agt.
- Houston 2, Texas—Bankers Mortgage Bldg., 708 Main Street. (Telephone Jackson 5-9786)
- J. A. HOSTY, General Agent.
- Huntington Ind.—Erie Station. (Telephone 743)
- HAROLD L. JOHNSON, Div. Frt. Agt.
- Indianapolis 4, Ind.—11 So. Meridian St. (Telephone Melrose 7-0255)
- L. B. BRACKENRIDGE, General Agent.
- Jamestown 3, N. Y.—Erie Station.
- O. B. CHAPMAN, Div. Passenger Agt. (Telephone 61-026)
- C. W. STROH, Div. Frt. Agt. (Telephone 7921-7922)
- Kansas City 5, Mo.—Room 1016 Dwight Building. (Telephone Victor 2-6328)
- H. A. BOCKMAN, General Agent.
- Los Angeles 14, Cal.—510 West 6th Street. (Telephone 3-0479)
- K. O. HEMMING, General Agent.
- Marion, O.—Terminal Building. (Telephone 2-0126)
- L. E. BERRY, Division Freight Agent.
- Memphis 3, Tenn.—Exchange Bldg. (Madison & Second Sts.) (Telephone Jackson 6-8781)
- W. R. JACOBS, General Agent.
- Milwaukee 3, Wis.—Majestic Bldg., 331 West Wisconsin Ave. (Telephone Broadway 1-3320-3321)
- C. O. EWING, General Agent.
- Minneapolis 2, Minn.—Rand Tower. Marquette Ave. and 6th St., So. (Telephone Federal 9-0991-0992)
- L. L. HARRIS, General Agent.
- Newark 2, N. J.—Military Park Bldg., 60 Park Place. (Telephone Market 2-0525-26-27)
- F. L. COLLINS, General Agent.
- New Haven 10, Conn.—H. B. I. Bldg. (Telephone State 7-5015-16)
- G. T. DOLAN, General Agent.
- New Orleans 12, La.—Room 810, Pere Marquette Bldg. (Telephone Jackson 5-9786)
- E. F. McHUGH, General Agent.
- New York 20, N. Y.—11 Rockefeller Plaza, Rockefeller Center. (Telephone Circle 5-7222)
- H. T. JAMES, City Pass. Agent.
- J. N. MONZEL, Steamship Pass. Agent. (Telephone Worth 4-4500)
- E. C. ADLER, Genl. East. Frt. Agt.
- Omaha 2, Neb.—1319 Farnam St. (Telephone Jackson 4866)
- E. HAVLICEK, General Agent.
- Paterson, N. J.—5 Colt St. (Telephone Armory 4-4808)
- E. H. HUFFMAN, Division Freight Agent
- Peoria 2, Ill.—Jefferson Building, Cor. South Jefferson & Fulton Streets. (Telephone 3-0479)
- F. W. DAVISON, General Agent.
- Philadelphia 2, Pa.—1503 Finance Bldg. (Telephone Rittenhouse 6-8975-8976)
- GEORGE PETERSON, General Agent.
- Pittsburgh 19, Pa.—Koppers Bldg. (Telephone Grant 1-4831-2-3)
- J. L. CHAPMAN, Asst. Genl. Frt. Agt.
- Portland 5, Ore.—American Bank Bldg., 621 S. W. Morrison St. (Telephone CA 3-3706)
- W. E. REAGER, General Agent.
- Rochester 4, N. Y.—Reynolds Arcade Building. (Telephone Hamilton 6-7938)
- W. E. BENNETT, Div. Freight Agt.
- San Francisco 5, Cal.—681 Market St. (Telephone Sutter 1-3875)
- J. C. BANNATYNE, General Agent.
- St. Louis 1, Mo.—721 Olive St. (Telephone Chestnut 1-7723-1-7724)
- J. W. CLOUD, General Agent.
- Scranton 3, Pa.—Northeastern National Bank Building. (Telephone DI mond 4-7237-7238)
- J. A. STERL, Division Freight Agent.
- Seattle 1, Wash.—817 White Bldg., 1318 Fourth Ave. (Telephone MA 3-4834-3-4835)
- R. J. DUNDON, General Agent.
- Springfield, O. (See Dayton-Springfield O.)
- Toledo 4, O.—2006 Toledo Trust Bldg., 245 Summit Street. (Telephone CHerry 1-3816)
- R. D. McMULLIN, General Agent.
- Toronto, Ont.—69 Yonge Street. (Telephone Empire 3-1311-12)
- ROBERT WILLIAMSON, Can. Frt. Agt. (Telephone Empire 3-1311-12)
- Washington 5, D. C.—National 8-6075 (See Baltimore—Washington)
- Youngstown 3, O.—Terminal Building. (Telephone Riverside 7-0792)
- W. L. SCHORR, Div. Passenger Agent. C. F. LAUER, Asst. Genl. Frt. Agt. R. A. SAUSE, JR., General Agent.