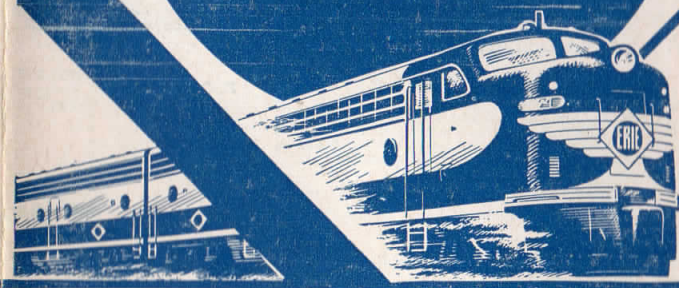
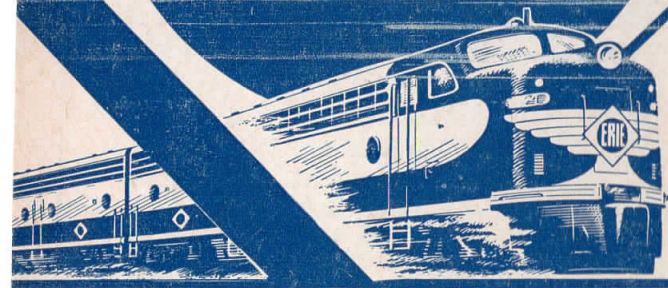


Effective 2:01 A. M.
OCTOBER 28, 1956

Effective 2:01 A. M.
OCTOBER 28, 1956

ERIE

ERIE



TIME TABLES

TIME TABLES

The Scenic Route between

NEW YORK
JAMESTOWN
YOUNGSTOWN
CLEVELAND
AKRON
CHICAGO

The Scenic Route between

NEW YORK
JAMESTOWN
YOUNGSTOWN
CLEVELAND
AKRON
CHICAGO

FORM 1

FORM 1

Erie Railroad

Erie Railroad



we've changed stations

3 FAST, CONVENIENT ROUTES SERVING NEW YORK CITY



ROCKEFELLER CENTER MOTOR COACH

Direct service between the Hoboken Station and Rockefeller Center Terminal in midtown Manhattan, via the Holland Tunnel. Intermediate stops: inbound, along Eighth Avenue at W. 32nd Street and at W. 42nd Street; outbound, W. 34th Street at Eighth Avenue (Hotel New Yorker).

This is a special service provided by the Erie exclusively for the convenience of passengers traveling between New York City and points west of Goshen, New York. Ordinary hand baggage is carried free and transferred for you at all stops. Please buy motor coach tickets, when you buy your rail tickets, or from your conductor (they are not sold after arrival in Hoboken). The fare is one-dollar, including tax.



BARCLAY STREET FERRY

You can enjoy frequent, direct ferry boat service without charge, between Barclay Street in downtown Manhattan, and the Erie-Lackawanna Station in Hoboken. Schedules are arranged to connect with all through trains.



HUDSON & MANHATTAN TUBE TRAINS

Frequent service via H & M Tube Trains to 33rd Street and 6th Ave., in midtown Manhattan or downtown to Hudson Terminal at Church St. is available at Hoboken—fare, twenty-cents.

For further details, see your Erie ticket agent or conductor.

ALL ERIE TRAINS

(except certain commuter trains)

NOW ARRIVE AND DEPART

from the
ERIE-LACKAWANNA STATION
in **HOBOKEN** New Jersey
instead of Jersey City

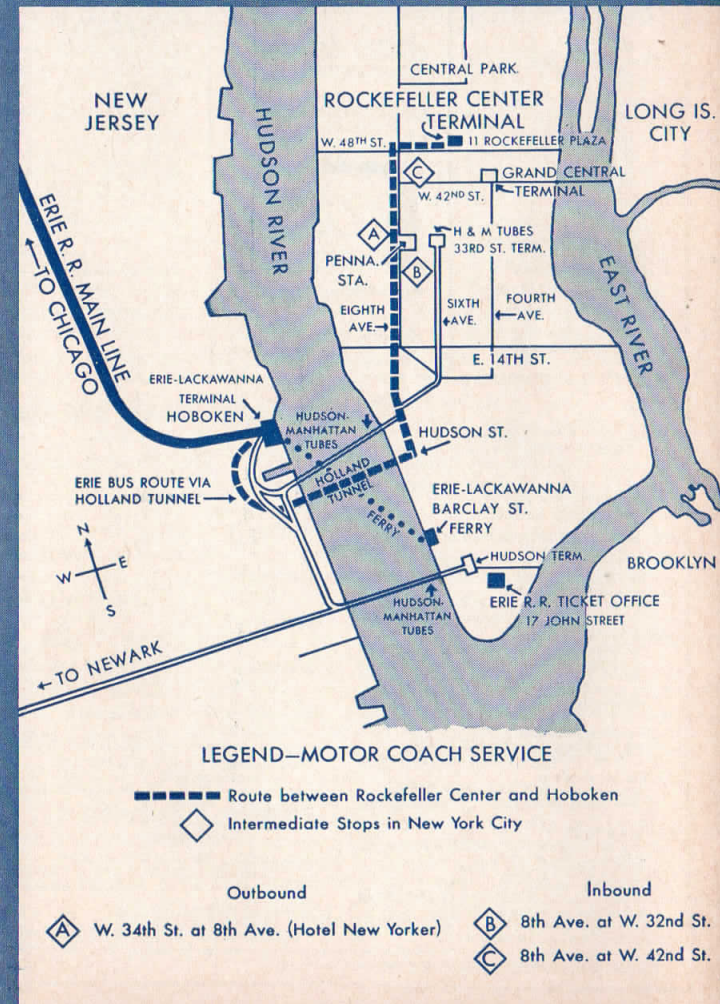


TABLE OF CONTENTS

Equipment of Through Trains... Page 9, 10
Equipment of Detroit, Toledo, Cleveland, Youngstown, Pittsburgh, Washington and Baltimore Trains... 23, 24
Erie Railroad Map... 15, 16, 17, 18
Fares—One-Way and Round-Trip... 7, 8
Fares—Sleeping and Parlor Car... 7, 8
Map of Downtown Chicago... 15, 25
Map of New York City and adjacent area... 18
Motor Coach Service New York... 12
Suggestions to help you read this folder... 5, 6
Ticket Offices and Passenger Stations in Principal Cities... 3, 4
Traffic and Development Representatives... 29, 30
General Information... 5, 6

Train Service
Binghamton—New York... 13, 14
Binghamton—Chicago... 19, 20
Bradford—Salamanca—Akron—Chicago... 21
Chautauqua Lake—Jamestown—Akron—Chicago... 21
Condensed Schedule of Through Trains... 9, 10
Detroit—Toledo—Cleveland—Youngstown—Pittsburgh—Washington—Baltimore... 23, 24
Marion—Chicago... 19, 20
New York—Binghamton... 11, 12
New York—Kenosha Lake—Jeffersonville... 21
New York—Salamanca—Bradford... 21

INDEX OF STATIONS ON ERIE RAILROAD OR CONNECTING LINES

At Which Trains Are Scheduled To Stop
Numerals Opposite Station Names Indicate Time Table Numbers
Symbols Before Station Explained at Bottom of Page

Table with 6 columns listing station names and corresponding table numbers. Includes stations like Addison, Akron, Alliquippa, Alondale, Andover, Arden, Ashland, Aurora, Baltimore, Barborton, Beaver, Beaver Falls, Belmont, Binghamton, Bradford, Calicoon, Cambridge Springs, Chautauqua, Chautauqua Lake, Chester, Chicago, Cleveland, Cocheton, Connellsville, Coraopolis, Corning, Corry, Crown Point, Cuba, Cumberland, Decatur, Deposit, Detroit, East Fifty-fifth St., East Ninety-third St., Elmira, East Rutherford, Ellwood City, Elmira, Endleott, Englewood, Friendship, Gallion, Garrettsville, Geauga Lake, Goshen, Great Bend, Greenville, Gulf Summit, Hale's Eddy, Hammond, Hancock, Hankins, Harper's Ferry, Hillburn, Hiram, Hoboken, Hornell, Howells, Huntington, Jamestown, Jefferson, Kenosha Lake, Kent, Kenon, Lackawaxen, Lee Road, Lima, Long Eddy, Lordville, Mahoning, Mahwah, Mansfield, Mantua, Marion, Martinsburg, McKeesport, Meadville, Middletown, Mill Rift, Monroe, Narrowsburg, New Brighton, New Castle, New Hampton, New York, Niles, North Judson, North Randall, Ohio City, Olean, Otisville, Owego, Parker's Glen, Passaic, Paterson, Phalanx, Pittsburg, Pond Eddy, Port Jervis, Toledo, Tuxedo, Union City, Wadsworth, Waldwick, Wampum, Warren, Washington, Waverly, Wellsville, Westcolong Park, Youngstown.

ERIE TICKET OFFICES AND PASSENGER STATIONS IN PRINCIPAL CITIES

Table listing ticket offices and passenger stations in principal cities. Includes cities like Akron, Binghamton, Chicago, Cleveland, Erie, Hamilton, Huntington, Jamestown, Jersey City, Kent, Lima, Mansfield, Marion, Meadville, Middletown, New York, Niles, Olean, Passaic, Paterson, Port Jervis, Salamanca, Sharon, Warren, Youngstown. Lists agent names and phone numbers.

Not on the Erie Railroad—See schedule indicated. No tickets Sold or Baggage Handled at this station.



Suggestions to help you read this folder

Reading of Tables

On all tables, the schedule of each individual train is shown in a separate column. Each train has an operating number which appears at the top of the schedule column.

Train times from 12:01 a.m. (Midnight) to 12:00 Noon inclusive, are printed in light-faced figures; 12:01 p.m. (Noon) to 12:00 Midnight are printed in dark-face throughout the timetable.

Trains make regular stops only at stations where time figures appear in column opposite the station name. Symbols are opposite some schedule figures. They are important. They indicate exceptions and should be checked carefully with the explanation under Reference Notes at the bottom of each page.

When trains are shown as Stopping Conditionally at a Station, passengers should advise Station Agent, in advance, of their intention to board train or notify Conductor of intention to leave train, as case may be.

On main line Table 4, where a station name is indented, that station is located on a Branch Line or connecting service.

The equipment of principal trains is shown on pages 9, 10, 23 and 24. Coach equipment is carried on all trains.

Any Erie Ticket Agent or representative will be glad to assist you with information and reservations.

General Information

Erie Lines east of and including Ohio City, Ohio, are shown in EASTERN STANDARD TIME. Lines west of Ohio City, Ohio, in CENTRAL STANDARD TIME.

THIS COMPANY IS NOT RESPONSIBLE FOR ERRORS in timetables, inconvenience or damage resulting from delayed trains, or failure to make connections; schedules and equipment shown herein are subject to change without notice.

The term HOLIDAYS (unless covered by special note under schedule) refers to New Year's Day, Lincoln's Birthday, Washington's Birthday, Memorial Day, Independence Day, Labor Day, Columbus Day, Election Day, Veteran's Day, Thanksgiving and Christmas.

The term MAJOR HOLIDAYS (as shown in the notes on various tables) refers to Thanksgiving Day, Christmas, New Year's Day, Washington's Birthday, Memorial Day, Independence Day and Labor Day.

CHILDREN under five years of age are carried free when accompanied by parent or guardian; five years of age and under twelve, half fare; twelve years of age and over, full fare.

Should ANY MISUNDERSTANDING arise with conductors or agents, pay the fare required, take receipt and communicate with Passenger Traffic Manager, Midland Bldg., Cleveland, Ohio.

TICKETS UNUSED or partly used will be redeemed under tariff regulations at proper value. Railroads are not responsible for lost tickets or baggage checks.

A STOP-OVER within final limit will be granted on tickets sold at regular fares at all stations on the Erie Railroad (with certain exceptions in the New York suburban area).

WHEN ARTICLES ARE LOST on trains or left in waiting rooms, owners should apply at once to Agent at station where they leave train or address Manager, Baggage Traffic, Erie Railroad, Chambers St. Terminal, New York 7, N. Y., giving full description of property, stating date of loss and train number.

150 pounds of baggage may be checked on adult tickets and 75

pounds on half fare tickets subject to tariff stipulations as to contents, weight, value and size. A service charge of 25c will be collected for each piece of hand baggage and 50c for each trunk.

Personal baggage is wearing apparel, toilet articles (except liquid) and personal effects in actual use and necessary and appropriate for the wear, use, comfort and convenience of the passenger for the purpose of the journey and not intended for other persons or for sale. Articles which may not be included in personal baggage are shown in published tariff which is on file at stations. Baggage to be checked should be delivered at stations reasonably in advance of train departure. The railroad cannot guarantee to forward baggage on same train with passenger and when necessary will be forwarded on other trains. To facilitate prompt receipt of baggage at destination, passengers are urged to arrange for forwarding on a preceding train.

A charge is made for storage of baggage at destination when it is not claimed within full time limit.

BAGGAGE WILL NOT BE REMOVED FROM TRAINS AT STATIONS WHEN AGENT IS NOT ON DUTY TO RECEIVE IT.

ALL BAGGAGE CHECKED IN BAGGAGE CAR TO OR FROM NEW YORK CITY will be sent to Barclay Street Station.

BAGGAGE CHECKED FOR HANDLING IN BAGGAGE CAR WILL NOT BE CARRIED ON MOTOR COACHES.

BAGGAGE INSURANCE may be purchased at principal Erie Ticket Offices. It insures your baggage and personal effects for your entire trip anywhere in the world. Minimum premium twenty-five cents. Ask Ticket Agent for full particulars.

BAGGAGE may be checked through to house address, hotel, steamship dock, etc., at destination. Reliable transfer companies perform this service at nominal charges at all principal cities.

HAND BAGGAGE in coaches or Pullman cars is restricted to what can be conveniently placed in accommodations purchased by passenger. It is urged that passengers carry with them only such baggage as required for their immediate needs. Other baggage may be checked in baggage car at a nominal charge.

RED CAP PORTER SERVICE is available at principal stations at a charge of 15c, except at Cleveland Union Terminal where charge is 25c, for each bag or parcel. Carriers' liability is limited to not more than \$50.00 for each bag or parcel unless greater value declared in writing on form provided for that purpose. Declaration form available at baggage room. An additional charge of 20c per bag or parcel will be made for each \$100.00 or fraction thereof, declared in excess of \$50.00. A bag or parcel having value in excess of \$500.00 will not be accepted under any circumstances.

FOR YOUR OWN SAFETY—don't get on or off a train in motion; wait for a full stop. Keep hand baggage out of car aisles. Walk carefully when entering or leaving train; high-heeled shoes are sometimes a cause of tripping or stumbling on car steps. Don't stand or walk close to the railroad track; look both ways before starting across.

PREPAID TICKET ORDERS—for patrons who do not wish to send money by mail, Erie Railroad Ticket Agents sell prepaid ticket orders for the delivery of transportation, rail and Pullman, from practically all points in the United States, Canada and Mexico. These orders may also include the furnishing of cash.

In an emergency, arrangement may be made for the delivery of transportation by telegraph or telephone without charge except when commercial wires are used. Consult Ticket Agents for details.

FOLLOWING RAILROAD AND PULLMAN FARES For information only. Federal tax not included. Subject to change without notice.

Between	NEW YORK				BINGHAMTON				YOUNGSTOWN				
	Fares via Motor Coach to and from Rockefeller Center—91c additional in each direction				RAILROAD TICKETS VALID IN				RAILROAD TICKETS VALID IN				
	Coaches		Pullmans		Coaches		Pullmans		Coaches		Pullmans		
	One Way	Round Trip	One Way	Round Trip	One Way	Round Trip	One Way	Round Trip	One Way	Round Trip	One Way	Round Trip	
Akron	\$ 19.85	\$ 33.76	\$ 26.30	\$ 49.98	\$ 8.80	\$ 14.53	\$ 26.15	\$ 7.64	\$ 7.55	\$ 1.94	\$ 13.88	\$ 2.69	\$ 5.38
Binghamton	6.90	13.80	9.15	18.30	7.55	14.53	26.15	7.64	7.55	1.94	13.88	2.69	5.38
Bradford	14.44	28.36	19.04	37.01	7.55	14.53	26.15	7.64	7.55	1.94	13.88	2.69	5.38
Chicago	30.15	51.29	40.83	77.60	13.45	24.38	41.48	62.74	11.40	21.74	36.96	29.45	55.97
Cleveland	19.25	32.76	25.88	49.19	8.80	13.82	25.20	35.81	7.55	10.09	19.58	2.39	4.78
Corning	9.57	18.69	12.68	25.25	7.55	2.70	5.40	7.24	1.05	10.42	19.43	13.31	26.41
Corry	16.12	28.26	21.43	41.16	7.55	9.22	18.11	24.47	7.55	2.40	3.55	7.10	9.30
Elmira	8.96	17.69	11.90	23.73	7.55	2.45	4.16	5.68	1.05	10.64	20.42	14.10	27.93
Hornell	11.08	21.16	14.65	28.88	7.55	4.16	8.32	11.06	1.15	8.60	17.06	11.34	22.63
Huntington	26.95	45.83	36.25	68.83	11.40	21.54	38.02	57.01	9.85	13.40	23.83	23.40	45.84
Jamestown	15.18	28.93	20.15	38.90	7.55	3.95	8.23	10.97	2.25	4.42	8.84	5.92	11.84
Lima	24.31	41.37	32.67	62.11	11.40	18.88	32.13	47.78	8.80	7.44	14.88	9.85	19.70
Mansfield	21.89	37.22	29.07	55.28	9.85	16.65	28.88	42.53	8.80	4.10	4.25	7.75	11.50
Marion	23.21	39.48	30.80	58.54	9.85	17.46	29.87	44.31	8.80	4.45	4.57	7.49	14.98
Meadville	17.54	29.93	23.40	44.63	7.55	4.00	10.64	24.26	7.55	2.05	4.10	2.74	5.48
Middletown	2.39	* 4.31	3.19	1.05	5.14	* 10.62	7.01	14.02	7.55	1.40	17.54	23.83
New York	7.55	11.90	13.80	9.15	118.30	2.00	17.88	30.45	23.79
Olean	13.28	24.41	17.65	34.44	7.55	3.50	6.41	11.82	1.65	6.30	11.60	8.34	16.68
Pittsburgh	7.55	4.00	14.70	26.41	7.55	2.29	4.58	3.14	6.28
Salamanca	13.91	25.31	18.51	35.96	7.55	3.55	7.04	14.08	1.85	5.67	11.34	7.49	14.98
Sharon	17.88	30.45	23.79	45.26	7.55	4.00	12.15	22.79	7.55	3.15	3.93	8.83	11.66
Warren	18.43	31.34	24.51	46.57	7.70	3.11	13.11	24.20	7.55	3.25	5.37	1.06	8.12
Waverly	8.32	16.59	11.04	22.08	7.55	2.30	1.44	* 2.92	1.05	11.26	21.42	14.95	28.85
Wellsville	11.97	22.62	15.90	31.24	7.55	3.20	5.03	* 10.16	7.55	1.40	7.72	116.44	10.17
Youngstown	17.88	30.45	23.79	45.26	7.70	4.00	12.67	23.57	7.55	3.20

Between	JAMESTOWN				CLEVELAND				CHICAGO				
	RAILROAD TICKETS VALID IN				RAILROAD TICKETS VALID IN				RAILROAD TICKETS VALID IN				
	Coaches		Pullmans		Coaches		Pullmans		Coaches		Pullmans		
	One Way	Round Trip	One Way	Round Trip	One Way	Round Trip	One Way	Round Trip	One Way	Round Trip	One Way	Round Trip	
Akron	\$ 6.38	\$ 12.76	\$ 8.51	\$ 17.02	\$ 3.11	\$ 6.22	\$ 4.09	\$ 8.18	\$ 12.57	\$ 23.42	\$ 16.71	\$ 32.71	\$ 7.55
Baltimore	8.23	16.45	10.97	21.94	15.24	27.09	20.25	39.11	24.38	41.48	33.01	62.74	11.40
Binghamton	8.23	16.45	10.97	21.94	7.55	14.53	26.15	7.64	18.52	31.66	24.69	46.99
Bradford	1.75	* 3.50	2.29	* 4.58	7.55	7.42	14.84	9.59	19.18
Chicago	16.77	29.09	22.29	42.68	3.90	7.80	11.70	23.40	21.74	36.96	29.45	55.97	9.85
Cleveland	5.67	11.34	7.39	14.78	1.65	3.30	4.95	9.90	15.33	27.25	21.04	40.48	7.55
Corning	5.53	11.06	7.37	14.74	1.05	4.78	9.56	6.39	15.33	27.25	21.04	40.48	7.55
Corry	1.39	* 2.78	1.39	* 2.78	7.55	1.05	4.78	9.56	15.33	27.25	21.04	40.48	7.55
Elmira	6.15	12.30	8.20	16.40	1.65	3.30	4.95	9.90	22.35	38.01	30.23	57.49	9.85
Hornell	4.07	8.14	5.44	10.88	1.15	9.84	13.16	12.93	20.49	34.86	27.73	52.71	8.80
Huntington	13.28	24.41	17.65	34.44	3.25	6.50	9.75	19.50	16.77	29.09	22.25	42.68	7.55
Jamestown	10.73	20.41	14.18	27.98	3.00	6.00	11.06	11.42	7.36	14.72	9.85	19.70	7.55
Lima	10.73	20.41	14.18	27.98	3.00	6.00	11.06	11.42	7.36	14.72	9.85	19.70	7.55
Mansfield	8.51	16.91	11.17	22.34	2.30	5.48	10.96	7.34	10.45	20.16	13.87	27.46	7.55
Marion	9.31	18.27	12.21	24.36	2.50	6.83	13.66	9.06	19.22	18.11	36.39	24.62	7.55
Meadville	2.48	4.96	3.35	6.70	1.05	4.33	8.70	5.84	14.38	26.78	20.57	39.64	7.55
Middletown	13.97	24.33	18.04	35.13	3.30	6.60	13.20	25.44	29.69	50.51	40.02	76.07	13.45
New York	15.15	28.93	20.15	38.90	3.95	7.90	11.85	23.70	30.15	51.29	40.83	77.60	13.45
Olean	1.83	* 3.66	2.52	* 5.04	1.05	7.54	15.08	9.92	18.63	31.71	25.04	47.62	8.80
Pittsburgh	6.73	13.46	8.98	17.96	1.05	4.70	9.40	6.23	16.65	28.88	22.21	42.53	7.55
Salamanca	1.21	* 2.42	1.73	* 3.46	1.05	6.90	13.80	9.06	18.00	30.61	24.16	45.93	8.80
Sharon	3.99	* 7.98	5.28	* 10.56	1.15	2.99	5.86	3.88	14.98	26.78	19.93	38.48	7.55
Warren	4.97	* 9.94	6.62	* 13.24	1.40	1.94	* 3.88	2.61	14.09	25.57	18.68	36.28	7.55
Washington	15.24	27.09	20.25	39.11	1.75	3.50	7.00	14.00	22.96	39.06	31.12	59.17	9.85
Waverly	6.77	13.54	9.03	18.06	1.05	4.15	8.30	5.14	20.04	34.13	26.83	50.98	8.80
Wellsville	4.15	8.30	5.80	11.60	1.05	8.96	17.69	11.74	14.45	28.90	19.20	37.22	7.55
Youngstown	4.42	* 8.84	5.92	* 11.84	1.25	2.39	4.78	3.19	14.45	28.90	19.20	37.22	7.55

RATES FOR UPPER BERTH, DRAWING ROOM, COMPARTMENT, DOUBLE BEDROOM OR ROOMETTE IN SLEEPING CARS														
Where Roomette Rate Is	Lower Berth Rate Will Be	Upper Berth Rate	Double Bed-Room Rate		Bedroom Suite		Section Rate (See Note)		Compartment Rate		Drawing Room Rate		Where Roomette Rate Is	Lower Berth Rate Will Be
			One Person	Two or More Persons	One Person	Two or More Persons	One Person	Two or More Persons	One Person	Two or More Persons	One Person	Two or More Persons		
\$ 7.55	\$ 5.40	\$ 4.10	\$ 10.20	\$ 11.90	\$ 20.40	\$ 7.05	\$ 7.85	\$ 10.80	\$ 12.95	\$ 14.85	\$ 18.10	\$ 10.35	\$ 7.40	\$ 5.70
8.70	5.50	4.20	10.45	12.10	20.90	7.15	7.95	11.00	13.20	15.15	18.45	11.40	8.15	6.20
7.20	5.90	4.45	11.25	13.05	22.50	7.60	8.60	11.80	14.45	16.25	19.75	11.95	8.60	6.50
8.80	6.25	4.80	11.90	13.70	23.80	7.90	9.05	12.50	15.00	17.20	20.95	12.40	9.30	6.70
9.30	6.60	5.05	12.50	14.50	25.00	8.30	9.55	13.20	15.85	18.15	22.10	12.90	9.70	7.05
9.85	7.05	5.30	13.45	15.55	26.90	8.80	10.20	14.10	16.90	19.40	23.60	13.45	9.55	7.30
14.10	10.05	7.50	18.10	20.40	38.00	12.15	13.65	19.00	22.05	25.15	31.15	16.15	11.85	8.85
15.15	11.05	8.10	19.15	21.45	39.00	12.65	14.15	19.50	22.55	25.65	31.65	16.65	12.35	9.35
16.20	12.05	9.15	20.20	22.50	40.00	13.15	14.65	20.00	23.05	26.15	32.15	17.15	12.85	9.85
17.25	13.05	10.20	21.25	23.55	41.00	13.65	15.15	20.50	23.55	26.65	32.65	17.65	13.35	10.35
18.30	14.05	11.25	22.30	24.60	42.00	14.15	15.65	21.00	24.05	27.15	33.15	18.15	13.85	10.85
19.35	15.05	12.30	23.35	25.65	43.00	14.65	16.15	21.50	24.55	27.65	33.65	18.65	14.35	11.35
20.40	16.05	13.35	24.40	26.70	44.00	15.15	16.65	22.00	25.05	28.15	34.15	19.15	14.85	11.85
21.45	17.05	14.40	25.45	27.75	45.00	15.65	17.15	22.50	25.55	28.65	34.65	19.65	15.35	12.35
22.50	18.05	15.45	26.50	28.80	46.00	16.15	17.65	23.00	26.05	29.15	35.15	20.15	15.85	12.85
23.55	19.05	16.50	27.55	29.85	47.00	16.65	18.15	23.50	26.55	29.65	35.65	20.65	16.35	13.35
24.60	20.05	17.55	28.60	30.90	48.00	17.15	18.65	24.00	27.05	30.15	36.15	21.15	16.85	13.85
25.65	21.05	18.60	29.65	31.95	49.00	17.65	19.15	24.50	27.55	30.65	36.65	21.65	17.35	14.35
26.70	22.05	19.65	30.70	33.00	50.00	18.15	19.65	25.00	28.05	31.15	37.15	22.15	17.85	14.85
27.75	23.05	20.70	31.75	34.05	51.00	18.65	20.15	25.50	28.55	31.65	37.65	22.65	18.3	

NEW YORK—BINGHAMTON

TABLE 2 WESTBOUND For additional train service from Hoboken and Jersey City, not shown in this table, please refer to local time tables.

Table with columns for Miles from New York, Eastern Standard Time, and various train numbers (51, 53, 71, 1, 73, 55, 57, 75, 85, 59, 61, 77, 5, 79, 7, 9). Rows list stations from Binghamton, N.Y. to New York.

ALL ABOVE PASSENGER TRAINS ARE DIESEL POWERED

All Conditional Stops are for Revenue Passengers Only.

- ★ Trains 59 and 85, operate from Jersey City Station only with Ferry connection from Chambers St., at times shown opposite Hoboken & Barclay St. stations.
† Stops on signal to receive and discharge revenue passengers.
r Stops to discharge passengers.
BC Stops Friday nights only to discharge passengers.
BD Stops Fridays and Saturdays only.
BF Stops Monday to Saturday, incl.
BG Stops on Holidays only.
BH Stops Paterson and Ridgewood to receive passengers.
BI Stops Paterson and Ridgewood to receive passengers for Binghamton and west.
BK Stops Passaic to receive passengers.
BL Stops Mondays to Fridays incl. to receive and discharge passengers.
BM On Holidays arrives Port Jervis (4.50 P. M.).
BN Stops to discharge passengers from Ridgewood and east and receive passengers for Binghamton and west.
BP Stops Paterson and Ridgewood to receive passengers.
BR Stops Passaic and Suffern to receive passengers for Binghamton and west.
BU Bus operates between Narrowsburg and Honesdale.
BV On Saturdays Ferry for Train 57 Lv. (3.45 P. M.).
BW Runs West of Middletown Saturdays only.
① On Saturdays and Major Holidays, Ferry leaves Barclay St. at (4.15 A. M.).
② On Saturdays, Sundays and Major Holidays, Ferry leaves Barclay St. at (9.15 A. M.).
③ Will not run Holidays, Nov. 6, Nov. 12 and Feb. 12.
④ On Saturdays, Sundays and Major Holidays, Ferry leaves Barclay St. at (7.45 P. M.).

BINGHAMTON—NEW YORK

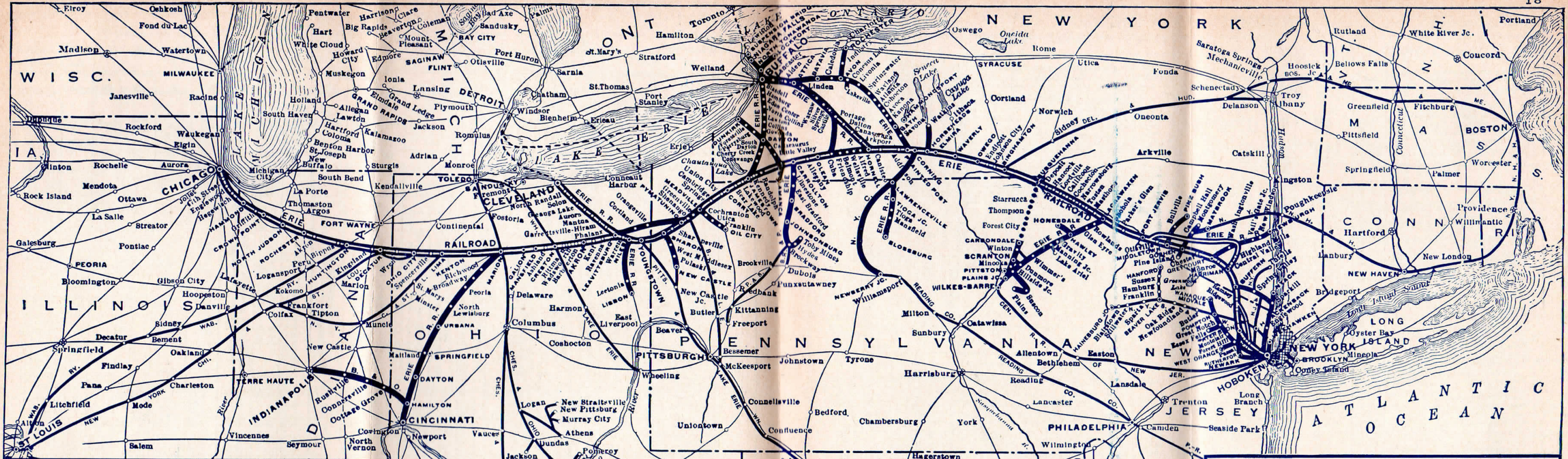
TABLE 3 EASTBOUND For additional train service to Hoboken and Jersey City, not shown in this table, please refer to local time tables. Hudson and Manhattan Tube Trains operate between New York and Erie-Lackawanna Station in Hoboken.

Table with columns for Miles from Chicago, Eastern Standard Time, and various train numbers (50, 52, 70, 72, 6, 54, 74, 76, 56, 58, 58, 78, 2, 60, 80, 8, 82, 62). Rows list stations from Binghamton, N.Y. to New York.

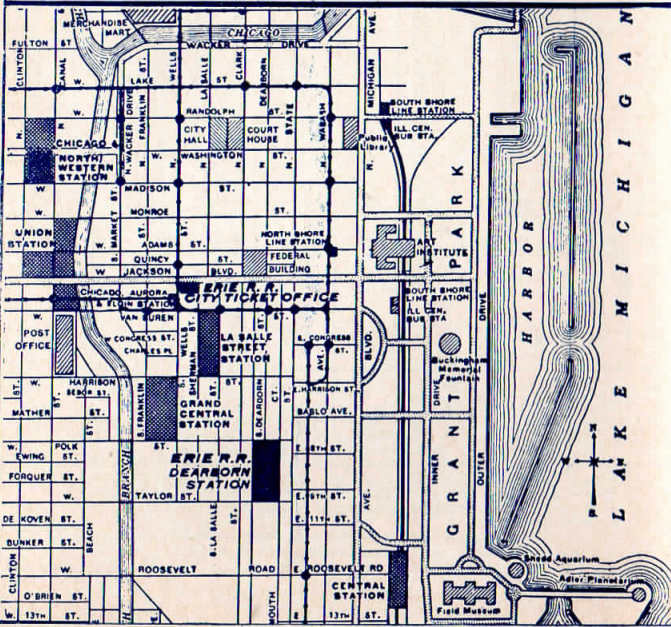
ALL ABOVE PASSENGER TRAINS ARE DIESEL POWERED

All Conditional Stops are for Revenue Passengers Only.

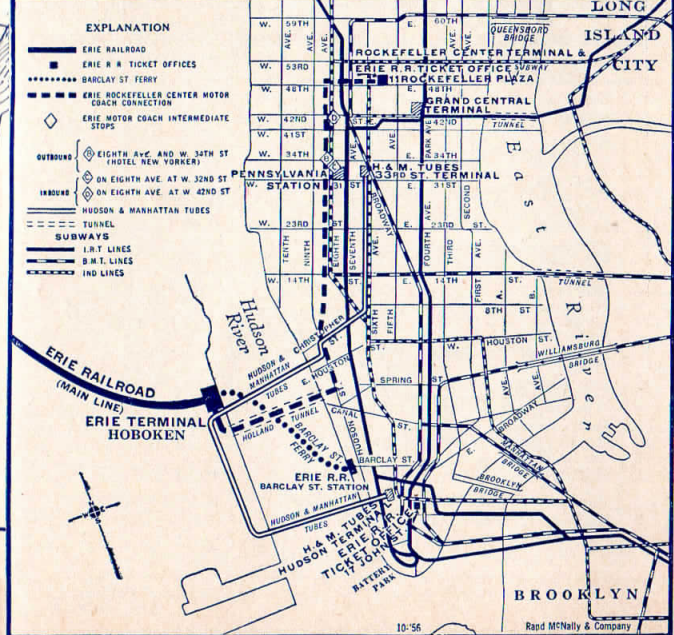
- ★ Trains 50, 52 and 70, terminate at Jersey City Station only with Ferry connection to Chambers St., at times shown opposite Hoboken and Barclay St. stations.
† Stops on signal to receive and discharge passengers.
r Stops to discharge passengers.
CB Stops on Holidays only.
CD Stops to discharge passengers from Binghamton and west and receive passengers for Ridgewood and east.
CE Stops at Middletown to discharge passengers from Binghamton and west, also on Sundays and Holidays, Nov. 22, Dec. 25, and Jan. 1, stops to receive passengers for New York.
CG Train 8 and Train 82 stops Ridgewood to discharge passengers from Port Jervis and west.
CH Train 8 operates via Bergen Short Cut. Connecting train to these points leaves Ridgewood (10.50 P. M.) Daily, except Sats. On Sats. Lv. (11.20 P. M.).
CK Stops Saturdays only to receive and discharge passengers.
CL Stops Ridgewood and Paterson to discharge passengers from Port Jervis and west.
CN Stops Suffern and Passaic to discharge passengers from west of Port Jervis.
CO Stops on Sundays only to discharge passengers from Port Jervis and west.
CS Bus operates between Narrowsburg and Honesdale.
CV Stops Sundays only.
① On Saturdays, Sundays and Major Holidays, Ferry arrives Barclay St. at (9.12 A. M.).
② On Saturdays, Ferry arrives Barclay St. at (4.42 P. M.).
③ On Minor Holidays, Nov. 6, Nov. 12 and Feb. 12, Ferry arrives Barclay St. at (4.27 P. M.).
④ Will not run Holidays, Nov. 6, Nov. 12 and Feb. 12.
⑤ Will run Holidays, Nov. 6, Nov. 12 and Feb. 12.



MAP OF DOWNTOWN CHICAGO
Showing Business District, "Loop," and Railroad Stations. For detailed information see page 25.



MAP OF NEW YORK CITY AREA
showing Erie Rockefeller Center Motor Coach, Barclay Street Ferry, H. & M. Tube routes, Erie Terminals and Ticket Offices.



ERIE RAILROAD AND CONNECTIONS
..... Freight Service with Erie Railroad Power



TABLE 4 WESTBOUND

BINGHAMTON-CHICAGO

EASTBOUND

Table with columns for Miles from New York, Eastern Standard Time Read Down, and Central Standard Time Read Down. Includes routes to Binghamton, Elmira, Salamanca, and Chicago.

ALL ABOVE PASSENGER TRAINS ARE DIESEL POWERED SEE REFERENCE NOTES ON PAGE 22

TABLE 5 NEW YORK-SALAMANCA-BRADFORD-CHICAGO

Table with columns for WESTBOUND Read Down and EASTBOUND Read Up. Includes routes to Salamanca, Bradford, and Chicago.

TABLE 6 NEW YORK-KENOZA LAKE-JEFFERSONVILLE Train and Bus Service via Callicoon

Table with columns for WESTBOUND Read Down and EASTBOUND Read Up. Includes routes to Kenosha Lake and Jeffersonville.

TABLE 7 NEW YORK-CHAUTAUQUA-CHICAGO (Via James' own and BUS of Chautauqua Transit Co.)

Table with columns for WESTBOUND Read Down and EASTBOUND Read Up. Includes routes to Chautauqua and Chicago.

NOW . . . convenient nation-wide credit service on the ERIE and many other railroads!

For personal or business travel . . . use the convenient charge-account service of the new RAIL TRAVEL CARD! Ask your Ticket Agent for application blank.

IMPROVED SLEEPING CAR SERVICE

WITH ROOMETTES, BEDROOMS AND SECTIONS ON TRAIN NO. 7-9 DAILY BETWEEN

NEW YORK and BINGHAMTON, ELM RA CORNING, HORNELL, OLEAN, SALAMANCA

Lv. New York (Rockefeller Center Bus) 11.20 P.M. (EST) Lv. New York (Barclay St. Ferry) 12.15 A.M. (EST) Lv. Hoboken (ERIE No. 7-9) 12.45 A.M. (EST)

(Sleeper open for occupancy in Hoboken Station at 9:30 P.M. EST)

For Complete Schedule See Pages 19 and 20

REFERENCE NOTES

- All Conditional Stops are for Revenue Passengers only.
Stops on signal to receive and discharge passengers.
For additional service between Cleveland and Youngstown see Table 8.
Via Erie Railroad Limousine Service between Salamanca and Bradford.
Stops Andover, Belmont and Friendship to discharge passengers from New York.
Train 8 and Train 82 stop to discharge passengers from Hammond and Chicago.
Stops Cuba to discharge passengers from Elmira and east, and to receive for Jamestown and west.
Stops to discharge passengers from Meadville and east, and to receive passengers for Akron and west.
Stops Endicott to discharge passengers from Ridgewood and east.
Stops on signal Union City and Cambridge Springs to discharge passengers from Jamestown and east and to receive for Youngstown and west.
Train 8 stops Wadsworth and Barberton to discharge from Galion and west, and to receive for Youngstown and east.
Stops to discharge passengers from Youngstown and east, and to receive passengers for Mansfield and west.
Stops to discharge passengers from Meadville and east, and to receive passengers for Galion and west.
Stops daily to discharge passengers from Youngstown and west, and to receive for New York.
Stops to discharge passengers from Jamestown and west, and to receive for Elmira and east.
Stops Cambridge Springs and Union City to discharge passengers from Chicago and to receive for Binghamton and east.
Stops to discharge passengers from Chicago.
Stops Waverly and Endicott to discharge passengers from Jamestown and west.
Erie limousine service; operates between Erie Railroad Station, Salamanca and Emery Hotel, Bradford.
Trains 7 and 9 stop to discharge passengers from east of Hammond.
Stops on signal to receive passengers for Chicago.
Stops on signal to discharge passengers from Chicago and receive passengers for Youngstown and east.
Train 9, operating Sundays only, will arrive and depart Jamestown a few minutes earlier, however, the same Bus connections to and from Chautauqua will apply.
Train 82, operating Sundays only, will arrive and depart Jamestown a few minutes later, however, the same Bus connections to and from Chautauqua will apply.
On Saturdays, Sundays and Major Holidays, ferry arrives Barclay St. at (9.12 A. M.).
On Saturdays, Sundays and Major Holidays, ferry leaves Barclay St. at (9.15 A. M.).
On Saturdays, Sundays and Major Holidays; ferry leaves Barclay St. at (7.45 P. M.).
Note X.—In connection with the bus service; the Erie Railroad acts as agent only and is not responsible beyond its own line, except as such responsibility may be imposed by law with respect to baggage.
Note ⊕—See Table 4 for stops of Motor Coach in New York City.

TABLE 8 DETROIT—TOLEDO—CLEVELAND—YOUNGSTOWN—PITTSBURGH—WASHINGTON—BALTIMORE—PHILADELPHIA

Table with multiple columns showing train routes, times, and distances between Cleveland and Philadelphia. Includes sections for Eastern Standard Time, Morning Steel King, Evening Steel King, and various train numbers like 624, 626, 630, 628, 686, 629, 627, 625, 685, 623.

NEW DIESEL POWER ON ALL TRAINS BETWEEN CLEVELAND, YOUNGSTOWN AND PITTSBURGH. EQUIPMENT—EASTBOUND

- No. 628—Daily ex. Sun. & Hol. Coaches, Cleveland to Youngstown.
No. 630—Sun. & Hol., only. Coaches, Cleveland to Youngstown and Salamanca.
No. 624—Morning Steel King—Daily. Erie Parlor-Diner, Cleveland to Pittsburgh.
No. 626—Daily. Ind. Reclining Seat Coaches, Cleveland to Pittsburgh.
No. 686—Evening Steel King—Daily. Ind. Reclining Seat Coaches, Cleveland to Pittsburgh.
No. 627—Sun. & Hol. only. Coaches, Cleveland to Pittsburgh.

EQUIPMENT—WESTBOUND

- No. 629—Daily ex. Sun. & Hol. Coaches, Youngstown to Cleveland.
No. 625—Morning Steel King—Daily. Ind. Reclining Seat Coaches, Pittsburgh to Cleveland.
No. 627—Sun. & Hol. only. Coaches, Youngstown to Cleveland.
No. 623—Evening Steel King—Daily. Erie Parlor-Diner, Ind. Reclining Seat Coaches, Pittsburgh to Cleveland.
No. 625—Morning Steel King—Daily. Ind. Reclining Seat Coaches, Pittsburgh to Cleveland.
No. 627—Sun. & Hol. only. Coaches, Youngstown to Cleveland.

All Conditional Stops are for Revenue Passengers only.

- f Stops on signal to receive and discharge revenue passengers.
GD Stops Mantua to discharge passengers from Cleveland and receive passengers for Youngstown and east.
GG Stops to discharge passengers from Cleveland and to receive passengers for New Castle and east.
GJ Taxicab service between Wampum and Ellwood City.
GR Stops to discharge passengers.
GK Stops Saturdays only to discharge passengers from Cleveland.
GX Stops to discharge passengers from Youngstown and receive for Cleveland.
GZ Baggage checked on train 623 will be taken to Union Terminal Cleveland and will be available at Lee Rd. station following morning.

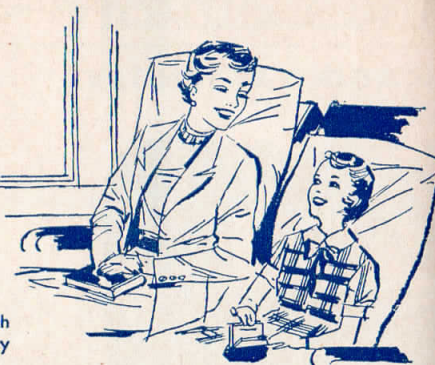
Holidays in the above table refers to the observance of New Year's Day, Memorial Day, Independence Day, Labor Day, Thanksgiving Day and Christmas Day.

You'll Rest Easy!

... with a fresh, clean, soft pillow

Only 25c

Just ask the coach porter. He'll supply one in a jiffy!



Another Erie Service ON THE ERIE LIMITED AND THE LAKE CITIES (Pillows may be rented for your journey before 11.15 P.M.)

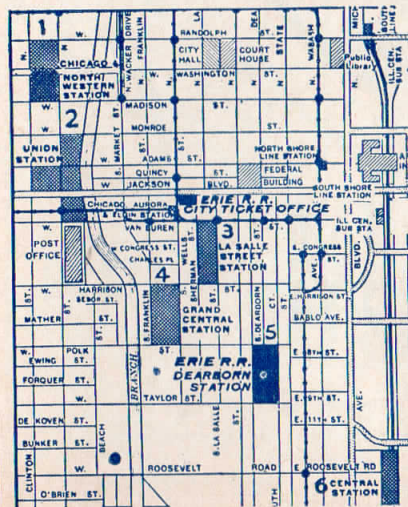
LAY-OVER SLEEPING CARS AT YOUNGSTOWN AND AKRON FOR CHICAGO TRAVELERS

Latest type sleeping cars with year 'round air conditioning provide Erie passengers with the most modern and luxurious accommodations for overnight travel. Smooth diesel power all the way.

For your convenience, sleeping cars are ready for occupancy at Erie Station in Youngstown and Akron at 9:30 p.m. and may be occupied until 8:00 a.m. at Akron on the return.

Lv. Youngstown 11.46 p.m. E.S.T.
Lv. Akron 1.15 a.m. E.S.T.
Ar. Chicago 7.55 a.m. C.S.T. (Dearborn Station)

Lv. Chicago 10.00 pm. C.S.T.
Ar. Akron 6.30 a.m. E.S.T.*
*7.02 a.m. E.S.T. Sundays
Ar. Youngstown 7.45 a.m. E.S.T.*
*8.26 a.m. E.S.T. Sundays



CHICAGO PASSENGER STATIONS

- Number Indicates Location On Map.
DEARBORN STATION (5)
CHICAGO & EASTERN ILLINOIS
CHICAGO & WESTERN INDIANA
GRAND TRUNK
C & NW TERMINAL (1)
UNION PASSENGER STATION (2)
LA SALLE ST. STATION (3)
GRAND CENTRAL STATION (4)
CENTRAL STATION (6)

FREE TRANSFER OF PASSENGERS AND LUGGAGE BETWEEN DEPOTS IN CHICAGO

Limousine transfer service to connecting lines at other depots is available to passengers holding through tickets at no additional charge.

If you change stations and have three or more hours in Chicago before departure of your train, your luggage is handled for you, free of charge, directly to the parcel room of your train. You can spend all of your free hours for business or enjoyment in Chicago. Here's how this Erie service operates: 1. The Erie Train Porter takes your luggage shortly before arrival in Chicago, and gives you a claim check. 2. When you



leave your Erie train at Chicago your luggage is transferred to the parcel room of your connecting line. 3. Before departure time of your westbound train, you pick up your luggage at the parcel room of the station from which you are departing. This service is also available to passengers departing from Dearborn Station where no station transfer is involved, and where there is one hour or more waiting time.

LEE ROAD-SHAKER HEIGHTS PASSENGER STATION

Located at Lee Road and Miles Avenue

Plenty of Parking Space Available

You may leave your car at the station during the day—ready for you when you return.

BUS SERVICE • TAXI SERVICE



SERVING Shaker Heights

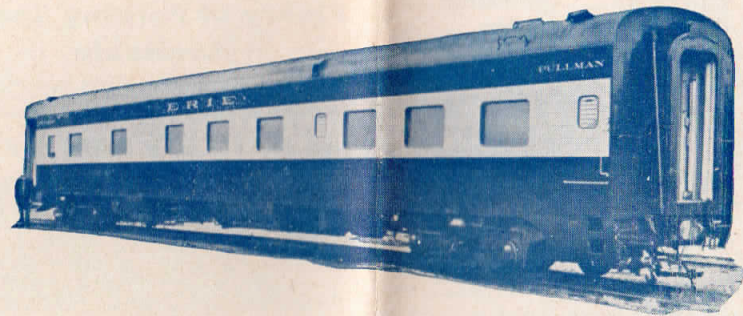
Shaker Heights

Cleveland Heights

University Heights

Maple Heights and adjacent areas

New Luxury and Comfort FOR YOUNGSTOWN-CHICAGO PASSENGERS



New, ultra-modern sleeping cars

"PRIDE OF YOUNGSTOWN"

"SPIRIT OF YOUNGSTOWN"

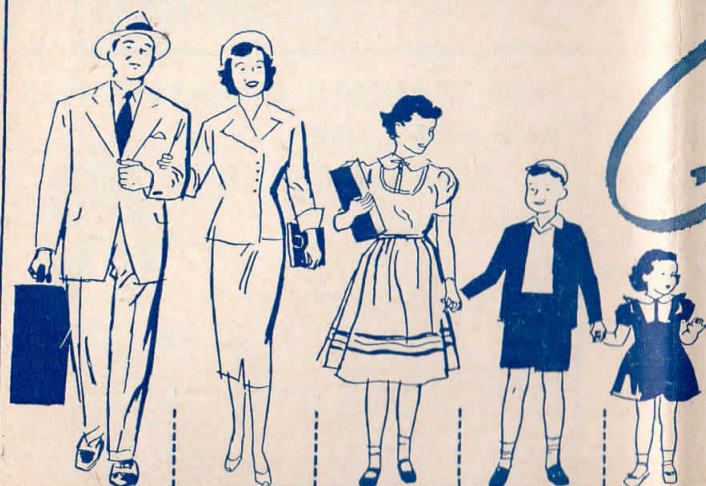
These new sleepers feature new comforts and conveniences that will make your trips more restful and enjoyable. They operate in Erie Train No. 1, The Erie Limited, from Youngstown, Niles and Warren to Chicago, and Erie Train No. 8, The Atlantic Express, from Chicago to Warren, Niles, Youngstown, Sharon, Greenville and Meadville

BEDROOM. Utmost roominess for one or two adults. Two, movable deep-cushioned chairs for lounging. At night, one or two pre-made restful beds are quickly ready for a refreshing night's sleep. Toilet facilities are completely enclosed. Individual lighting and heat or air-conditioning control; circulating ice water; ample wardrobe and luggage space. Two connecting bedrooms can be made into one large room with four beds for family accommodations.

ROOMETTE. Ideal for one person. Newly-developed counter-balances and a cutaway portion in the "Fold-in-the-wall" bed permit the passenger to raise and lower it easily without opening the door. Individual heat or air-conditioning control. Wide picture windows let you enjoy the scenery.

These cars are open for occupancy at Youngstown at 9:30 P.M. E.S.T. and Chicago at 9:15 P.M. C.S.T.

On your next over-night trip between Youngstown and Chicago, ride these luxurious new sleeping cars. You'll remember your trip with pleasure!
(See Pages 9-10)



Go Erie

MAKE IT A FAMILY AFFAIR AND SAVE!

See your friendly Erie ticket agent for exact fares.

FULL FARE 1/2 FARE* 1/2 FARE* 1/4 FARE* FREE

* Approximate

ERIE RAILROAD COMPANY

General Offices (Midland Building, Cleveland 15, Ohio. (Telephone, Cherry 1-8400)
(Hudson Terminal, 50 Church Street, New York 7, N. Y. (Telephone Worth 4-4500)
(South La Salle Building, 327 South La Salle Street, Chicago 4, Ill. (Telephone Harrison 7-4160)

TRAFFIC DEPARTMENT

H. W. VON WILLER, Vice-President, Cleveland
D. R. THOMPSON, Asst. Vice-President, Cleveland

PASSENGER—Sales and Service—Rates
A. G. OLDENQUIST, Passenger Traffic Manager, Cleveland

P. J. WILD, General Passenger Agent, Cleveland
R. E. TOWNS, Assistant General Passenger Agent, Youngstown
V. F. GREEN, Assistant General Passenger Agent, Youngstown

G. W. KHROM, Assistant General Passenger Agent, New York
A. W. MEINKE, Manager Mail, Baggage and Express Traffic, " "
J. VAN DER VELDE, Assistant to Passenger Traffic Manager, Cleveland
J. M. COLLINS, Manager, Dining Car Department, Hoboken

FREIGHT—Sales and Service

E. J. DEAN, Assistant Vice President, New York
G. W. MADSEN, Freight Traffic Manager, " "
B. F. CONWAY, Freight Traffic Manager, Piggy Back & LCL Traffic, " "
E. T. BUTLER, Jr., Asst. Freight Traffic Manager, " "
H. A. WILSON, General Eastern Freight Agent, " "
F. K. CORLETT, Assistant General Freight Agent, Buffalo
M. E. FITZGERALD, General New England Agent, Boston
C. R. MARTIN, Freight Traffic Manager, Cleveland
D. C. KELSEY, Asst. General Freight Agent, Cincinnati
H. W. GRAY, Assistant General Freight Agent, Pittsburgh
C. G. ANDREWS, Assistant General Freight Agent, Youngstown
W. W. THOMS, Assistant General Freight Agent, " "

R. E. O'GRADY, Assistant Vice President, Chicago
J. A. RUSSELL, Western Traffic Manager, Los Angeles
C. V. HARROW, Freight Traffic Manager, Chicago
L. E. NEWMAN, Assistant General Freight Agent, Detroit
E. W. KEILEY, Assistant General Freight Agent, " "

FOREIGN FREIGHT TRAFFIC

W. C. OTTEN, Foreign Freight Traffic Manager, New York
C. A. STOEBER, Assistant Foreign Freight Traffic Manager, " "
P. J. VAN NESS, Foreign Freight Agent, Chicago
C. C. MITCHELL, Foreign Freight Agent, New York
A. B. CONNELL, Export and Import Agent, " "
P. J. NAPOLI, Perishable and Dairy Traffic Manager, Pier 20, N. R., New York

FREIGHT—Rates

O. M. MEYNE, Freight Traffic Manager, New York
J. H. SISCO, Assistant Freight Traffic Manager, " "
THOMAS GILPIN, General Freight Agent, " "
F. K. NOONBURG, Assistant General Freight Agent, " "
C. P. BELL, Assistant General Freight Agent, " "
F. J. NELSON, Chief of Tariff Bureau, " "
R. M. TERHUNE, Chief of Divisions Bureau, " "

E. C. HALLBERG, Assistant Vice-President, New York
F. M. KLITZ, Freight Traffic Manager, Chicago
H. C. WELLS, Assistant Freight Traffic Manager, " "
L. M. SCHUKEL, General Freight Agent, " "
E. R. BURTON, Assistant General Freight Agent, " "
A. E. HARTMAN, Chief of Tariff Bureau, " "
F. M. BELL, Chief of Divisions Bureau, " "

COAL AND COKE

A. E. BARKALOW, Coal Freight Agent, New York
J. A. MUCHA, Coal Freight Agent, Buffalo

G. A. LAMB, Coal Traffic Manager, Cleveland
R. T. PHILLIPS, General Coal Freight Agent, Cleveland
W. N. STENFELT, Coal Freight Agent, Chicago
M. S. SWEENEY, Coal Freight Agent, Pittsburgh

INDUSTRIAL DEVELOPMENT

L. J. SLACK, Industrial Commissioner, New York
R. W. SCHEUCH, Industrial Agent, " "
D. F. MACKERLEY, Industrial Engineer, " "

D. M. LYNN, Assistant Vice-President, Cleveland
G. W. MOORHOUSE, Industrial Commissioner, Cleveland
J. S. PARSONS, Jr., Industrial Agent, " "
R. S. TIBBITS, Industrial Engineer, " "

TRAFFIC DEPARTMENT REPRESENTATIVES

SALES AND SERVICE

- Akron 8, Ohio.—Erie Station**
J. P. CLARK, Division Passenger Agent. (Telephone Blackstone 3-8512)
H. F. KEELER, General Agent. (Telephone Homlock 4-8194-4-8195)
80 East Exchange St.
- Albany 7, N. Y.—D. & H. Bldg.**
(Telephone 4-6051)
J. E. CAMPBELL, General Agent.
- Atlanta 3, Ga.—Haley Bldg.**
(Telephone Walnut 2135)
J. P. DREW, General Agent.
- Baltimore 2, Md.—Munsey Bldg.**
(Telephone Plaza 2-8691)
G. A. KIEL, General Agent.
- Birmingham 3, Ala.—927-928 Brown-Marx Bldg., 2000 First Ave., N.**
(Telephone Alpine 1-1327)
WM. L. THORNTON, General Agent.
- Boston 14, Mass.—150 Causeway St.**
(Telephone Capitol 7-2510-11-12)
M. R. FITZGERALD, Gen. New Eng. Agt.
- Buffalo 6, N. Y.—1221 Clinton St.**
(Telephone South 1520)
F. K. CORLETT, Asst. Gen. Freight Agt.
- Chicago 4, Ill.—327 South La Salle St.**
(Telephone Harrison 7-4160)
R. A. JOHNSON, City Passenger Agent.
L. E. NEWMAN, Asst. Gen. Frt. Agt.
- Cincinnati 2, O.—931 Englewood Bldg.**
(Telephone Main 1-3420, 1-3421)
H. W. GRAY, Asst. Genl. Frt. Agt.
- Cleveland 15, O.—Midland Bldg.**
(Telephone Cherry 1-8400)
D. C. KELSEY, Asst. Gen. Frt. Agt.
- Columbus 15, O.—Atlas Bldg., 8 East Long Street.**
(Telephone Capitol 4-7331)
C. F. LAUER, General Agent.
- Dallas 1, Tex.—1609 Main Street.**
(Telephone Riverside 2-7352)
J. A. MOORE, General Agent.
- Dayton-Springfield 2, O.—25 S. Main Bldg.**
(Telephone Dayton, Adams 8481)
(Telephone Springfield Fairfax 2-5351)
C. P. UNDERWOOD, Div. Frt. Agt.
- Des Moines 9, Ia.—Hubbell Bldg., 904 Walnut Street.**
(Telephone 4-0018)
J. L. FISCHER, General Agent.
- Detroit 2, Mich.—General Motors Bldg.**
(Telephone Trinity 5-2361-61)
E. W. KEILEY, Assistant Genl. Frt. Agt.
- Edmonton, Alberta, Canada**
Magee Bldg., 10118 100A St.
(Telephone 4-5835)
GUY M. GREENWOOD, Comm. Agt.
- Elmira, N. Y.—Erie Station**
G. SAUNDERS, Division Passenger Agt.
(Telephone 2-1621)
H. J. SPINDLER, Division Freight Agent.
(Telephone 2-0377)
- Houston 1, Texas.—Bankers Mortgage Bldg., 708 Main Street.**
(Telephone Capitol 7-3764)
J. A. HOSTY, General Agent.
- Huntington, Ind.—Erie Station.**
(Telephone 743)
HAROLD L. JOHNSON, Div. Frt. Agt.
- Indianapolis 4, Ind.—1 So. Meridian St.**
(Telephone Melrose 7-0255)
L. R. BRECKENRIDGE, General Agent.
- Jamestown 3, N. Y.—Erie Station.**
O. B. CHAPMAN, Div. Passenger Agt.
(Telephone 61-026)
J. L. CHAPMAN, Div. Frt. Agt.
(Telephone 7921-7922)
- Jersey City 2, N. J.—Erie Station.**
(Telephone Journal Square 2-6400)
H. HERRMANN, Genl. Agt. Pass. Dept.
E. H. HUFFMAN, Division Freight Agent.
- Kansas City 6, Mo.—Room 1016 Dwight Building.**
(Telephone Victor 2-6328)
N. C. FRICK, General Agent.
H. F. STUDD, Asst. Gen. Agt.
- Los Angeles 14, Cal.—610 West 6th Street.**
(Telephone Vanlike 4129)
K. O. HEMMING, General Agent.
- Marion, O.—Terminal Building.**
(Telephone 2-0126)
J. L. THADEN, Division Freight Agent.
- Memphis 3, Tenn.—Exchange Bldg. (Madison & Second Sts.)**
(Telephone Jackson 6-8781)
W. R. JACOBS, General Agent.
- Milwaukee 3, Wis.—Majestic Bldg., 232 West Wisconsin Ave.**
(Telephone Broadway 1-3320-3321)
C. O. EWING, General Agent.
- Minneapolis 2, Minn.—Rand Tower, Marquette Ave. and 6th St., So.**
(Telephone Federal 2-3604)
L. L. HARRIS, General Agent.
- Newark 2, N. J.—Military Park Bldg., 60 Park Place.**
(Telephone Market 2-0525-26-27)
F. L. COLLINS, General Agent.
- New Haven 10, Conn.—W B I B Bldg.**
(Telephone State 7-5915-16)
G. T. DOLAN, General Agent.
- New Orleans 12, La.—Room 308, Pere Marquette Bldg.**
(Telephone Raymond 9786)
E. F. MCHUGH, General Agent.
- New York 20, N. Y.—11 Rockefeller Plaza, Rockefeller Center.**
(Telephone Circle 5-7222)
G. H. DOWN, City Pass. Agent.
H. T. JAMES, City Pass. Agent.
J. N. MONZEL, Steamship Pass. Agent.
- New York 7, N. Y.—60 Church Street.**
(Telephone Worth 4-4500)
H. A. WILSON, Genl. East. Frt. Agt.
E. HAVLICEK, General Agent.
- Omaha 2, Neb.—1319 Farnam St.**
(Telephone Jackson 4866)
E. HAVLICEK, General Agent.
- Peoria 2, Ill.—Jefferson Building, Cor. South Jefferson & Fulton Streets.**
(Telephone 3-0479)
F. W. DAVISON, General Agent.
- Philadelphia 2, Pa.—1503 Finance Bldg.**
(Telephone Rittenhouse 6-8975-8976)
GEORGE PETERSEN, General Agent.
- Pittsburgh 19, Pa.—Koppers Bldg.**
(Telephone Grant 1-4831-2-3)
C. G. ANDREWS, Asst. Genl. Frt. Agt.
- Portland 5, Ore.—American Bank Bldg., 621 S. W. Morrison St.**
(Telephone CA 3-3706)
W. E. REAGER, General Agent.
- Rochester 4, N. Y.—Reynolds Arcade Building.**
(Telephone Hamilton 7938)
W. E. BENNETT, Div. Freight Agent.
- San Francisco 5, Cal.—681 Market St.**
(Telephone Sutter 1-3875)
H. F. HECK, General Agent.
- St. Louis 1, Mo.—721 Olive St.**
(Telephone Chestnut 1-7723-1-7724)
J. W. CLOUD, General Agent.
- Scranton, Pa.—First National Bank Bldg.**
(Telephone—Diamond 4-7237-7238)
J. A. STERL, Division Freight Agent.
- Seattle 1, Wash.—817 White Bldg., 1318 Fourth Ave.**
(Telephone Elroy 4834)
R. J. DUNDON, General Agent.
- Springfield, O.—(See Dayton-Springfield O.)**
- Toledo 4, O.—1404 Toledo Trust Bldg., 245 Summit Street.**
(Telephone Cherry 1-3816)
C. W. STROH, General Agent.
- Toronto, Ont.—69 Yonge Street.**
(Telephone Empire 3-1311-12)
ROBERT WILLIAMSON, Can. Frt. Agt.
- Washington 5, D. C.—619 Bond Bldg., 14th St. and New York Ave., N. W.**
(Telephone National 8-6075)
H. A. BOCKMAN, General Agent.
- Youngstown 3, O.—Terminal Building.**
(Telephone Riverside 7-0792)
W. L. SCHOHR, Div. Passenger Agent.
W. W. THOMS, Asst. Genl. Frt. Agt.
H. W. MCILWAIN, General Agent.