

L&N

**PASSENGER TRAIN  
TIME TABLES**

LOUISVILLE  
AND  
NASHVILLE  
RAILROAD

APRIL 27, 1952

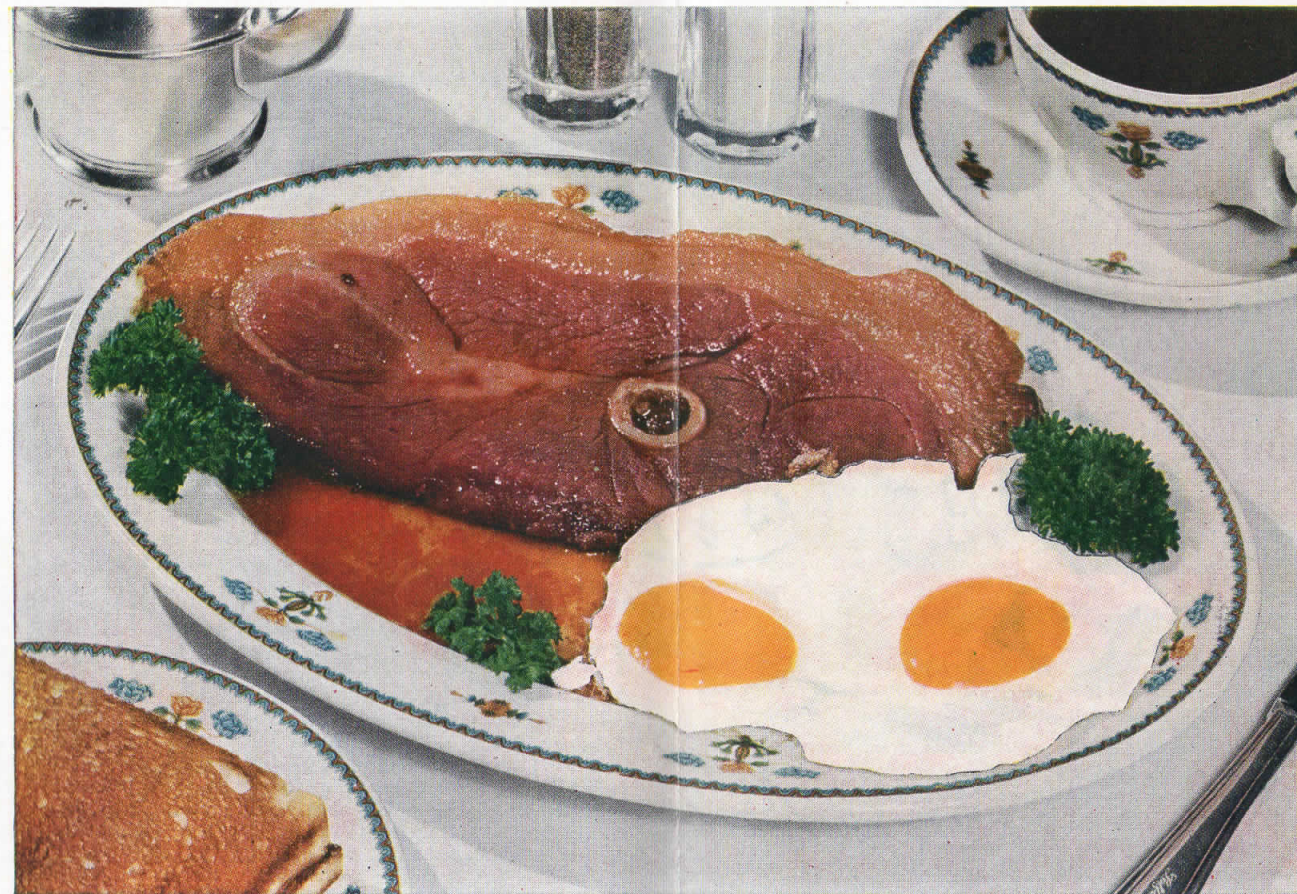


L&N

**PASSENGER TRAIN  
TIME TABLES**

LOUISVILLE  
AND  
NASHVILLE  
RAILROAD

APRIL 27, 1952



On the **L & N** it's . . .

**Country ham  
for breakfast**

For many years, the constant demand of our patrons has made Country Ham the favorite on L & N diners. Our Hams are carefully selected, properly cured and sufficiently aged to assure the highest standard of quality. Country Ham is available for all meals on all L & N diners. ★ Expertly prepared and served with real red gravy, it is more than delicious. Fresh country eggs cooked to your individual taste—hot bread, muffins or toast—choice of fruit juices or cereal—your favorite beverage—make a superb breakfast.



For delicious food and fine service, travel via **L & N**

**LOUISVILLE & NASHVILLE R.R.**

GENERAL INDEX

Table listing general index items like Air-Conditioned Cars, Baggage Regulations, Connecting Lines Train Service, etc.

Table listing general index items like Index to Stations, Local Schedules, Map of L & N R.R., etc.

GENERAL INFORMATION

The time tables show the time at which trains may be expected to arrive and depart from stations and to connect with other trains...

It is our aim to render satisfactory service, and passengers are requested to report any instance of inattention or incivility on the part of employees.

CHILDREN under five years of age will be carried free when accompanied by parent or guardian; five years of age and under twelve, half fare;

REDEMPTION OF TICKETS. Wholly unused tickets of this Company's issue may be redeemed at the same office where ticket was purchased if presented by original purchaser within two months from date of sale.

Application for redemption of unused portions of tickets of this Company's issue, also wholly unused tickets which have not been presented for redemption at office where sold within the two months' period, should be made to General Passenger Agent, L & N Railroad, Louisville 1, Ky.

ADJUSTMENT OF FARES. In the event of disagreement with Conductors or Agents relative to ticket conditions, privileges allowed, etc., passengers should pay the fare required, take receipt and refer case for adjustment to the General Passenger Agent, Louisville 1, Ky., who will refund any overcharge.

HONORING TICKETS TO NON-STOP STATIONS. Passengers holding tickets to stations at which through trains do not stop, will be required to transfer at some intermediate point (usually the last regular terminal point short of destination) and to use next following local train which is scheduled to stop at destination.

STOP-OVERS. One-way tickets are limited to thirty (30) days in addition to date of sale, and stop-overs may be made at any station enroute within final limit of ticket.

Stop-overs are also allowed at all points on the Louisville and Nashville Railroad within final limit of Round-Trip tickets by application to conductor. Detailed information regarding stop-overs may be secured from passenger representatives on page 39 of this folder, or from any L. & N. ticket agent.

AIR-CONDITIONED CARS are regularly assigned principal through main line trains and every effort will be made to provide same; but the right is reserved to use non-Air-Conditioned equipment when necessary, due to volume of traffic or operating contingencies.

BAGGAGE REGULATIONS

DEFINITION OF BAGGAGE. Personal wearing apparel, toilet articles except liquids, and other personal effects in actual use and necessary for the wear, use, comfort and convenience of the passenger and not intended for other persons nor for sale.

MARKING FOR IDENTIFICATION. Mark or tag each piece of baggage with name and address; also place name and permanent address inside each piece, whether the baggage is checked or carried on the train.

ALLOWANCE. Baggage not exceeding 150 pounds in weight or \$100.00 in value, will be checked free upon presentation of one adult passage ticket, and baggage not exceeding 75 pounds in weight or \$50.00 in value will be checked free for a child traveling on a half-fare ticket.

Unless a greater sum is declared and excess valuation charges be paid therefor, according to tariff regulations, the value of baggage weighing 150 pounds or less checked for an adult is agreed not to exceed \$100.00 in value and the value of baggage weighing 75 pounds or less checked for child traveling on a half-fare ticket is agreed not to exceed \$50.00.

WEIGHT, SIZE AND LIABILITY. Baggage weighing in excess of the above free allowances will be charged for in accordance with published tariffs. No single piece of baggage weighing more than 300 pounds, or having dimensions exceeding 72 inches, or valued at more than \$2,500.00, or cardboard cartons weighing more than 50 pounds, will be transported as baggage, but must be sent by express or freight.

EXCESS CHECK. Passengers paying charges for excess weight or valuation will receive an excess baggage check, which must be surrendered to Agent with other checks, if any, when baggage is claimed.

CHECKED TO NON-AGENCY STATION. If baggage is checked to a non-agency station, passenger must claim same by presenting checks to train baggage man at baggage car door on arrival at destination. If baggage is not so claimed, it will be carried to next agency station beyond.

BAD CONDITION. Baggage that is too frail to withstand necessary handling will not be accepted for transportation in baggage cars. When baggage is received at destination in damaged condition, this fact must be called to agent's attention at time of delivery.

STORAGE OF BAGGAGE. On the first twenty-four hours, free storage is allowed at all stations. After expiration of the free time, storage charges will be assessed at regular tariff rates.

BICYCLES (NOT MOTORCYCLES), BABY CARRIAGES, AND GUNS are transported in baggage cars subject to tariff regulations.

DOGS (other than guide dogs) may be taken in private rooms of Pullman cars when on leash and muzzled. Dogs may be checked as baggage at tariff rates, when muzzled and on strong leash, or in crates.

DOGS, CATS AND OTHER SMALL HOUSEHOLD PETS (not vicious, odorous, or objectionable) when carried in baskets or containers may be taken into coaches, and into private rooms of Pullman cars.

FORWARDING. Passengers are urged to check baggage in advance so that it may be forwarded on a preceding train. Every effort will be made to facilitate the handling, but the Railroad cannot guarantee the forwarding of baggage on same train with owner nor can time of arrival at destination to which checked be guaranteed.

LOST ARTICLES should be inquired for through General Passenger Agent, L. & N. R.R., Louisville 1, Ky., or nearest representative.

NO RESPONSIBILITY IS ASSUMED for unchecked articles left in stations or cars.

Suggestions for Reading the L & N Time Table

The L & N Time Table Folder is designed for easy reading. Trains are listed by number, and the equipment is listed underneath the table in which the train's schedule is shown, or on the opposite page.

The tables on pages 6 to 13 are condensed, showing schedules and equipment of through trains operating over the L & N Railroad and connecting railroads, and these tables list only important cities and junction points on the route of the trains. Tables on pages 14 to 28 are complete schedules of trains operating over the L & N Railroad, showing names of stations served by each train. On pages 30 to 35 are listed condensed schedules of connecting railroads at important junction points. Pages 36 and 37 show Rail fares and Pullman rates in effect at the time this folder was printed.

TIME AM or PM

From 12:01 AM (midnight) to and including 12:00 noon shown in light-faced type; from 12:01 PM (noon) to 12:00 midnight printed in dark-faced type. Letters (CT) following names of stations indicate Central Standard Time, letters (ET) indicate Eastern Standard Time.

INDEX TO STATIONS

On pages 4 and 5, stations are listed alphabetically. To the right of the station is a letter or number, or both, indicating tables in which station is listed. Turn to that table, read down the list of stations to locate the desired city. On tables where schedules are shown in one direction, read down. Where schedules are listed in both directions, those to left of stations are southbound schedules and read down, times shown to right of stations are northbound and read up.

REFERENCE NOTES

To indicate special conditions applying to stops of trains at certain stations, as well as to convey other information which could not be included in the body of the time table, special letters and characters are used in connection with trains, stations or equipment, and explanation is contained under "Reference Notes" following the table in which the station or train is shown. If you find a letter or character opposite the train or station you are checking, it is most important that you also read the explanation of the mark to be fully informed of all conditions.

MAP

Map of the L & N Railroad and participating through train service is in the exact center of our folder—pages 20 and 21. Reference to this map will indicate the geographic location of stations and also the route of travel.

GENERAL INFORMATION

Page 2 contains items of general interest concerning train travel and baggage regulations.

TRAFFIC REPRESENTATIVES

On pages 38 and 39 are listed the names, addresses and telephone numbers of Passenger and Freight Traffic Representatives in the larger cities. When information regarding your travel or shipping problem is desired, a call to any of these representatives will receive courteous and prompt attention.

The CRESCENT-SUNSET ROUTE

ROUTE OF THE STREAMLINERS — CRESCENT LIMITED — SUNSET LIMITED

DELUXE PULLMAN SERVICE — ROOMETTES, DOUBLE BEDROOMS, COMPARTMENTS, DRAWING ROOMS, MASTER ROOM, LOUNGE

For Coast to Coast Travelers—Via This Scenic Route

SCHEDULES table with columns for WESTBOUND (Read Down) and EASTBOUND (Read Up), listing train numbers, dates, and times for various routes.

Take Advantage of Carefree Sight-Seeing.

Stop-Over In Gay, Colorful New Orleans . . .

"America's Most Interesting City"

Representatives meet trains and will suggest things to do and places to see in New Orleans; they will also assist in arranging for transfer of baggage as outlined on page 17.

REFERENCE NOTES:

CT—Central Standard Time. ET—Eastern Standard Time. MT—Mountain Standard Time. PT—Pacific Standard Time. B—Coach passengers leave Atlanta 1.55 PM arrive New York 11.00 AM. n—Sleeper may be occupied 9.30 PM at Washington. r—Sleeper may be occupied until 7.00 AM at Washington. T—Coach passengers leave Washington 1.40 AM arrive New York 6.20 AM. u—Sleepers open 10.00 PM. \*—No Coaches between New York and Atlanta. Δ Extra Fare. Δ—Special Service Charge between Los Angeles and San Francisco.

INDEX TO STATIONS

Figures following name of station refer to TABLES (not page numbers) of detailed schedules in which point appears; capital letters following name of station to TABLES of through service on pages 6 to 13. Population figures shown are the final figures of the 1950 census.

Table with 2 columns: Population and Table. Lists station names and their corresponding population and table numbers. Includes entries like Adair, Ky. (Pop 7, Table 7), Adams, Tenn. (Pop 4, Table 4), and Atlanta, Ga. (Pop 331,314, Table E, F, 5, 6, 9).

Table with 2 columns: Population and Table. Lists station names and their corresponding population and table numbers. Includes entries like Clay, Ky. (Pop 1,291, Table 30), Cleveland, Ohio (Pop 914,808, Table E), and Columbus, Ohio (Pop 375,901, Table A, E).

Table with 2 columns: Population and Table. Lists station names and their corresponding population and table numbers. Includes entries like Early Times, Ky. (Pop 900, Table 11), Elkhart, Ind. (Pop 128,636, Table C, F, G), and Evansville, Ind. (Pop 780, Table C, F, G, 4, 7).

Table with 2 columns: Population and Table. Lists station names and their corresponding population and table numbers. Includes entries like Florence, Ala. (Pop 23,879, Table 15), Fort Deposit, Ala. (Pop 1,358, Table F), and Jacksonville, Fla. (Pop 381, Table 1).

Table with 2 columns: Population and Table. Lists station names and their corresponding population and table numbers. Includes entries like Jacksonville, Fla. (Pop 381, Table 1), Jacksonville, Fla. (Pop 381, Table 1), and Jacksonville, Fla. (Pop 381, Table 1).

INDEX TO STATIONS (concluded)

Table with 2 columns: Population and Table. Lists station names and their corresponding population and table numbers. Includes entries like Jacksonville, Fla. (Pop 381, Table 1), Jacksonville, Fla. (Pop 381, Table 1), and Jacksonville, Fla. (Pop 381, Table 1).

Table with 2 columns: Population and Table. Lists station names and their corresponding population and table numbers. Includes entries like Jacksonville, Fla. (Pop 381, Table 1), Jacksonville, Fla. (Pop 381, Table 1), and Jacksonville, Fla. (Pop 381, Table 1).

Table with 2 columns: Population and Table. Lists station names and their corresponding population and table numbers. Includes entries like Jacksonville, Fla. (Pop 381, Table 1), Jacksonville, Fla. (Pop 381, Table 1), and Jacksonville, Fla. (Pop 381, Table 1).



Table with columns for Miles, SOUTHBOUND-DAILY, Local Schedules Montgomery to New Orleans on Page 15, The Azalean, The Crescent, Piedmont Limited, and NORTHBOUND-DAILY, Local Schedules New Orleans to Montgomery on Page 16. Includes train numbers, times, and destinations like New York, New Orleans, Washington, Atlanta, etc.

For through schedules of Crescent-Sunset Route, page 2. For connections west of New Orleans see page 34.

Table with columns for TYPE, CAR NO., FROM, TO, ACCOMMODATIONS. Lists train services like No. 1—THE AZALEAN, No. 33—PIEDMONT LIMITED, No. 37—THE CRESCENT, No. 4—THE AZALEAN, No. 6—THE HUMMING BIRD, No. 34—PIEDMONT LIMITED, No. 38—THE CRESCENT Streamlined Train.

REFERENCE NOTES: C.T.—Central Time, E.T.—Eastern Time, // Stops for meals, A Sleeper occupied until 8:00 AM, B Sleepers open 9:30 PM, C Stops to leave pay passengers from north of Washington and to take for south of Lynchburg, etc.

AIR-CONDITIONED CARS ARE REGULARLY ASSIGNED THE ABOVE TRAINS.

Table with columns for Read Down, 55-155 Daily, 51-151 Daily, Miles, 154 Daily, 156-56 Daily, Read Up. Lists train services between St. Louis and Louisville with times and car types.

For connecting service west of St. Louis see page 35.

Table with columns for TYPE OF CAR, CAR NO., FROM, TO, ACCOMMODATIONS. Lists car services for No. 51-151, No. 55-155, No. 154, and No. 156-56.

REFERENCE NOTES: // Stops for Meals, C.T.—Central Time, E.T.—Eastern Time, A Sleepers open 9:30 PM, B Sleepers occupied until 8:00 AM, C Stops to leave pay passengers from east of Evansville.

AIR-CONDITIONED CARS ARE REGULARLY ASSIGNED THE ABOVE TRAINS

Table with columns for Read Down, 6-65 Daily, 38-63 Daily, The Gulf Wind 34-61 Daily, Miles, The Gulf Wind 60-99 Daily, 62 Daily, 64-1 Daily, Read Up. Lists train services between New Orleans and Jacksonville with times and car types.

For connecting service west of New Orleans see page 34; for connections at Jacksonville see page 32.

Table with columns for TYPE OF CAR, CAR NO., FROM, TO, ACCOMMODATIONS. Lists car services for No. 34-61—THE GULF WIND, No. 60-99—THE GULF WIND, No. 62, No. 38-63, No. 64-1, and No. 6-65.

REFERENCE NOTES: D Stops to take pay passengers for scheduled stops east of Evansville, E Stops to take passengers for Tallahassee or beyond, and leave from Jacksonville or beyond, F Stops on signal, G Stops to leave passengers from Tallahassee or beyond, and take for Jacksonville or beyond.

FLORIDA

Are you looking for the ideal spot to spend your vacation? Florida is the answer! Vacation resorts throughout the state beckon—fishing, swimming, golfing, surfboarding—almost all sporting facilities are available anywhere . . . and hotel rates are lower during the summer. Famous name trains comprise L&N's service to Florida: THE SOUTH WIND, operating every third day from Chicago via Louisville and Montgomery; THE DIXIE FLAGLER from Chicago via Evansville, Nashville and Atlanta, are through trains to Miami and the East Coast, with direct connections at Jacksonville to Central and West Florida.

THE SOUTH WIND, fast overnight train, operates daily between New Orleans and Jacksonville, making direct connections to all Florida points.

This year, plan a vacation to America's favorite playground—Florida.

Table with columns for Miles, SOUTHBOUND, and various train services including Chicago, Cincinnati, Louisville, and Atlanta routes.

Table with columns for Miles, NORTHBOUND, and various train services including Jacksonville, Tampa, and St. Petersburg routes.

REFERENCE NOTES: C.T. Central Time, E.T. Eastern Time, A Sleepers occupied until 8:00 AM, B Sleepers open 9:30 PM, C No connecting service, southbound, D Sleeper from Cincinnati occupied until 8:00 AM (E.T.), E Sleeper for Cincinnati open 9:30 PM (E.T.), G Sleepers open 9:30 PM, H Van station about one mile from Logansport, K Sleepers occupied until 7:30 AM, T Tamiami Trail Tour bus south of Tampa, See West Coast through service via Perry, Fla.

SOUTHBOUND TYPE OF CAR, CAR NO., FROM, TO, ACCOMMODATIONS

No. 15—THE SOUTH WIND Streamlined Coaches—Pullman Train From CHICAGO

Observation Club-Lounge Bar-Lounge Sleepers Dining Cars Coaches

No. 17—THE FLAMINGO Sleepers Dining Car Coaches

No. 29 Coaches

No. 33—THE SOUTHLAND Lounge Sleepers Dining Cars Coaches

NORTHBOUND TYPE OF CAR, CAR NO., FROM, TO, ACCOMMODATIONS

No. 16—THE SOUTH WIND Streamlined Coaches—Pullman Train From MIAMI

Observation Club-Lounge Bar-Lounge Sleepers Dining Cars Coaches

No. 18—THE FLAMINGO Sleepers Dining Car Coaches

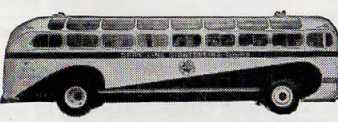
No. 30 Coaches

No. 32—THE SOUTHLAND Lounge Sleepers Dining Cars Coaches

REFERENCE NOTES: Delta In No. 21 Louisville to Corbin, Triangle Operates via Perry, Fla., Circle In No. 24 Corbin to Louisville, A Sleepers open 9:30 PM (ET), B Sleepers occupied until 8:00 AM (ET), AIR-CONDITIONED CARS ARE REGULARLY ASSIGNED THE ABOVE TRAINS

SEE AMERICA "FRONT ROW CENTER"

There's no surer way to make your vacation or business trip a complete and memorable success than to see the glorious sights of famous cities and resort areas the popular Gray Line way.



Ask your Louisville & Nashville Railroad Ticket or Passenger Agent for information and free folder.

PLAN YOUR TRIP IN ADVANCE—

It is not necessary to wait until date of departure to purchase rail tickets and Pullman accommodations. All one-way and round-trip rail tickets are good for a certain period of time. The limit of your ticket will be made effective from the date you start your trip, instead of date of purchase.

Some ticket offices are not open on Sunday and others are closed on Saturday and Sunday. On an interline journey, or a trip requiring Pullman accommodations, it is advisable to make arrangements in advance.

L & N Ticket Agents and Passenger Representatives will gladly assist you in making advance arrangements for your trips, whether for short or long distances.



CINCINNATI TO NEW ORLEANS

Table with columns for Miles, The Pan-American, The Humming Bird, The Azalean, The South Wind, and various train routes including Cumberland River, Duck River, Elk River, and others.

For explanation of reference marks see page 15.

CINCINNATI TO NEW ORLEANS

Table with columns for Miles, The Pan-American, The Gulf Wind, The Humming Bird, The Azalean, Piedmont Limited, The Crescent, and various train routes including Montgomery, Ala., Pensacola, Fla., and others.

REFERENCE NOTES for Table 1, Pages 14 and 15.

- Stops for Meals.
Elizabethtown is station for Abraham Lincoln National Park, Hodgenville, Ky.; reached by taxi service from Elizabethtown.
Mammoth Cave is reached by taxi service from Cave City; fare \$1.50 one way; \$2.50 round trip.
Baggage will not be handled on this train to or from points south of Montgomery, except it will be carried to or from Mobile and to New Orleans.
Baggage is not handled on this train south of Flomaton, but is handled in No. 33.
Via Teche Greyhound Bus; Rail tickets honored.
A Stops to take pay passengers.
B Stops to leave or take pay passengers.
C Stops to leave passengers from Latonia or beyond.
D Stops to leave pay passengers from Cincinnati, Indianapolis, St. Louis or beyond, and to take pay passengers for Chattanooga, Memphis, Birmingham, or beyond and for St. Louis or beyond via Guthrie.
E Stops to leave pay passengers from north of Bowling Green and from points on Memphis Line beyond Bowling Green and take pay passengers for south of Nashville.
F Stops on signal.
G Stops to leave pay passengers.
H Stops to leave pay passengers, also to take pay passengers for Campbellsburg and beyond.
I Stops to leave pay passengers from Nashville and beyond.
J Stops to leave pay passengers from Covington or beyond and take for Louisville or beyond.
K Stops to take pay passengers for New Orleans.
L Stops to leave pay passengers from Birmingham and beyond.
M Stops to leave pay passengers from Montgomery, Pensacola, or beyond and take pay passengers for New Orleans.
N Stops to leave pay passengers from Montgomery and beyond or from Pensacola and beyond.
O Stops to leave pay passengers from beyond Montgomery or from Pensacola and beyond.
P Stops to leave pay passengers from Atlanta and beyond.
Q Stops (9:12am) to leave pay passengers from Nashville or beyond.
R Stops to take pay passengers from Nashville or beyond or take for Birmingham or beyond.
S Stops to leave pay passengers from Mobile or beyond or take for New Orleans or beyond.
T Stops to leave pay passengers from Decatur, Nashville or scheduled stops beyond Nashville; also to take pay passengers for Birmingham, Montgomery or points beyond.
U Stops on Sunday to leave passengers.
V Stops to leave pay passengers from Montgomery or beyond or take for Mobile or beyond.
W Stops to leave pay passengers from Montgomery or beyond or take for Pensacola, Mobile or beyond.

The AMERICAN RAILROADS Present GORDON MacRAE on NBC with Stars of screen, stage, radio The RAILROAD HOUR Every Monday Night FAMOUS MUSICAL SHOWS



NEW ORLEANS TO CINCINNATI

Table with columns for train names (e.g., The Azalean, The Humming Bird), departure times, and arrival times for various stations along the route from New Orleans to Montgomery, Ala.

For explanation of reference notes see page 17.

NEW ORLEANS TO CINCINNATI

Table with columns for train names (e.g., The Azalean, The Humming Bird, The Pan-American, The South Wind), departure times, and arrival times for various stations along the route from New Orleans to Cincinnati, O.

REFERENCE NOTES for Table 2, pages 16 and 17. Includes notes about Mammoth Cave, baggage handling, Elizabethtown station, and various passenger service details.

Transferring passengers and hand luggage between stations at New Orleans

When traveling beyond New Orleans a change of stations is necessary. Passengers with through tickets have the choice of being transferred to the outgoing station, or to any hotel or other destination in downtown New Orleans, in buses of New Orleans Transfer Company without charge.

In addition to this transfer service of passengers, those with through tickets for connecting trains departing three or more hours later, can eliminate the inconvenience of carrying hand-luggage, by arranging with the depot representative of the New Orleans Transfer Company, to have it transferred to the other station and held until called for.

FARMLANDS IN THE SOUTH

The L&N Gulf Coastal regions of south Mississippi, south Alabama and northwest Florida offer exceptional opportunities for the production of various crops and livestock in addition to lands for settlement. For information write: E. J. Hoddy, General Agricultural Agent Louisville & Nashville Railroad Co. Louisville 1, Ky.

Table 3 BETWEEN CINCINNATI AND MEMPHIS

Table 3: Train schedule between Cincinnati and Memphis. Columns include Miles, Equipment (See page 6/7), The Pan-American (99-199), The Humming Bird (5-101), The Azalean (1), and 3-103. Rows list stations from Cincinnati, Ohio to Memphis, Tenn., including various river crossings and local stops.

A Stops to take pay passengers. B Stops to leave or take pay passengers. C Stops to take pay passengers for Louisville and beyond. D Stops to leave pay passengers. E Stops to leave or take pay passengers from or to Paris and regular stops beyond N. C. & St. L. points via McKenzie and to or from Humboldt, Brownsville, Memphis. No. 101 will also stop to leave pay passengers from Milan; No. 104 will also stop to leave pay passengers from I. C. RR points via Milan. f Stops on signal. G No baggage checked to or from Lenox. H Stops to leave pay passengers from Main Line points north or south of Bowling Green. K Stops on Saturdays to leave or take pay passengers from or to Clarksville and scheduled stops beyond. M Stops to leave or take pay passengers from or to Memphis, Birmingham, Cincinnati, Indianapolis or beyond, and from or to St. Louis or beyond via Guthrie or Louisville. N Stops to take or leave pay passengers to or from Memphis and beyond and to or from Guthrie and beyond via either Evansville Div. or Louisville Div. P Stops to leave or take pay passengers from or to Bowling Green or beyond and from or to Memphis or beyond; advance arrangements must be made with Ticket Agent Paris, Tenn. for trains to stop to pick up passengers. Q Stops to leave or take pay passengers from or to Guthrie or beyond and from or to Memphis or beyond; advance arrangements must be made with Ticket Agent Paris, Tenn. for trains to stop to pick up passengers. R Cave City is station for Mammoth Cave; reached by taxi service, fare \$1.50 one way; \$2.50 round trip.


Table 4 BETWEEN ST. LOUIS AND NASHVILLE

Table 4: Train schedule between St. Louis and Nashville. Columns include Miles, The Georgian (51), The Humming Bird (93-81), 93, 53, 55-53 Daily, Dixie Flyer (95), Dixie Flagler 11, and Dixie Flagler 12. Rows list stations from St. Louis, Mo. to Nashville, Tenn., including various river crossings and local stops.

REFERENCE NOTES: J Stops to leave pay passengers from East St. Louis or beyond. N Stops to leave pay passengers from points south of Evansville and passengers occupying sleeping cars from Evansville and beyond and to take pay passengers for East St. Louis and beyond. Q Stops to leave pay passengers from Henderson or beyond or take for Nashville or beyond. R Stops to leave pay passengers from Madisonville or beyond and take for Henderson or beyond. S Stops on signal Sundays to take or leave pay passengers. T Stops to leave or take pay passengers from or to Evansville, St. Louis or beyond; No. 93 also at Maunie on Sundays to take or leave passengers. V Stops to leave pay passengers from Evansville or beyond. W Stops to leave or take pay passengers from or to Chicago, St. Louis or Chattanooga or beyond. U Stops for Meals. A No baggage handled to or from local points between St. Louis and Evansville on trains 55 and 56. A Stops to take pay passengers for Nashville and beyond and leave pay passengers from Hopkinsville and beyond and from Memphis Line points. B Stops to leave or take pay passengers. C Stops to leave pay passengers from south of Guthrie and take for scheduled stops beyond Hopkinsville. D Stops to leave pay passengers from Decatur or beyond, or take for Chicago, St. Louis or beyond. E Stops to leave or take pay passengers from or to Henderson or beyond. f Stops on signal. G Stops to take pay passengers for Evansville or beyond; also to take from Main Line No. 7. H Stops to take pay passengers for points beyond Evansville where connecting trains stop.



MAP OF THE



LOUISVILLE & NASHVILLE R.R.

- EXPLANATION**
- L. & N. R.R.
  - Double Track
  - Through Car Routes
  - Connecting Lines
  - Steamship Lines
  - Highways

POOLE BROS. INC., CHICAGO  
6-25-53

7100-TT

CINCINNATI TO ATLANTA

Table with columns for Miles, The South-land, and The Flamingo. Rows include stations like Cincinnati, Ohio, Covington, Ky, and various river crossings.

Table with columns for Miles, The South-land, and The Flamingo. Rows include stations like Knoxville, Chattanooga, and Atlanta, Ga.

REFERENCE NOTES: C.T. Central Time. E.T. Eastern Time. A Stops to leave pay passengers from Covington or beyond and to take for Atlanta or beyond.

L & N DINING CAR SERVICE. L. & N. Diners are famous for fine Southern Style foods. Next time you ride an L. & N. train in which dining car service is available...

ATLANTA TO CINCINNATI

Table with columns for Miles, The South-land, and The Flamingo. Rows include stations like Atlanta, Ga., Marietta, and various river crossings.

Table with columns for Miles, The South-land, and The Flamingo. Rows include stations like Corbin, Cincinnati, and various river crossings.

REFERENCE NOTES: C.T.—Central Time. E.T.—Eastern Time. A Stops to leave pay passengers from Atlanta or beyond and to take for Cincinnati, Louisville or beyond.

BUY ROUND TRIP TICKETS and SAVE. For your convenience and saving, round trip tickets are on sale at principal L&N ticket offices, and are good for return anytime within 6 months from date you begin your trip.

Read Down		ST. LOUIS AND LOUISVILLE		Read Up	
55-155 Daily	51-151 Daily	Miles	Table 7	156-56 Daily	
			For complete schedules between St. Louis and Evansville, see table 4.		
			Lv St. Louis, Mo. Ar		
			Mississippi River		
			Lv East St. Louis, Ill. Ar		
			Belleville		
			Lv Nashville		
			Lv Ashley		
			Lv Mt. Vernon, Ill.		
			Lv McLeansboro		
			Lv Carmi, Ill.		
			Little Wabash River		
			Wabash River		
			Lv Mt. Vernon, Ind.		
			Lv Evansville		
			Lv Evansville		
			Ohio River		
			Lv Henderson, Ky.		
			Green River		
			Lv Owensboro		
			Lv Lewisport		
			Lv Adair		
			Lv Hawesville		
			Lv Skillman		
			Lv Cloverport		
			Lv Stephensport		
			Lv Sample		
			Lv Mystic		
			Lv Lodi		
			Lv Webster		
			Lv Irvington		
			Lv Irvington		
			Lv Guston		
			Lv Ekron		
			Lv Brandenburg		
			Lv Rock Haven		
			Lv West Point		
			Salt River		
			Lv Highland Park		
			Ar Fourth and H.		
			Ar Louisville, Ky.		
			Ohio River		

**REFERENCE NOTES:**

▲ Stops for meals. C.T.—Central Time E.T.—Eastern Time  
 ▲ No baggage handled to or from local points between St. Louis and Evansville on trains 55 and 56.  
 ▲ Cannellon, Ind. is reached from Hawesville, Ky. by day and night private ferry service; Tell City, Ind. by this ferry to Cannellon, thence taxi service to Tell City. Tickets sold and baggage checked only to Hawesville.  
 A Stops to leave or take pay passengers.  
 B Stops to take pay passengers for scheduled stops beyond Evansville; also at Mt. Vernon, Ill. to leave pay passengers from East St. Louis and beyond.  
 D Stops to leave pay passengers from Louisville and beyond.  
 f Stops on signal.  
 G Stops to leave pay passengers from east of Evansville, and passengers occupying sleepers from Evansville and beyond; also to take pay passengers for East St. Louis and beyond.  
 H Stops to take pay passengers.  
 K Stops to leave pay passengers from Louisville or beyond, and to take for Evansville and beyond.

Considerate Travelers  
 send daily  
 WESTERN UNION  
**TELEGRAMS**  
 to keep the home folks posted

Read Down		FLOMATON AND JACKSONVILLE		Read Up		
1 Daily	5 Daily	99 Daily	Mis.	Table 8	98 Daily	6 Daily
				L. & N. R. R.		
				Lv Cincinnati, O. (E.T.) Ar		
				Lv Louisville, Ky. (C.T.) Ar		
				C. & E. L. R. R.		
				Lv Chicago, Ill. (C.T.) Ar		
				L. & N. R. R.		
				Lv St. Louis, Mo. (C.T.) Ar		
				L. & N. R. R.		
				Lv Nashville, Tenn. Ar		
				Lv Birmingham, Ala. Ar		
				Lv Montgomery, Ala. Ar		
				Ar Flomaton, Ala. Lv		
				L. & N. R. R.		
				Lv New Orleans, La. Ar		
				Lv Mobile, Ala. Ar		
				Ar Flomaton, Ala. Lv		
				L. & N. R. R.		
				Lv Flomaton, Ala. Ar		
				Lv Century, Fla. Lv		
				Lv Bluff Springs. Lv		
				Lv McDavid. Lv		
				Lv Barth. Lv		
				Lv Molino. Lv		
				Lv Cantonment. Lv		
				Ar Pensacola. Lv		
				Pensacola Bay		
				Lv Pace Jct. Lv		
				Lv Milton. Lv		
				Blackwater River		
				Lv Harold. Lv		
				Lv Holts. Lv		
				Lv Milligan. Lv		
				Yellow River		
				Lv Crestview. Lv		
				Lv Mossy Head. Lv		
				Lv De Funiak Spgs. Lv		
				Lv Argyle. Lv		
				Lv Ponce de Leon. Lv		
				Lv Westville. Lv		
				Choctawhatchee River		
				Lv Carville. Lv		
				Lv Bonifay. Lv		
				Lv Chipley. Lv		
				Lv Cottondale. Lv		
				Lv Marianna. Lv		
				Chipola River		
				Lv Cypress. Lv		
				Lv Grand Ridge. Lv		
				Lv Sneads (C.T.) Lv		
				Apalachicola River		
				Eastern Time		
				Ar Chattanooga, Fla. Lv		
				S. A. L. R. R.		
				Lv Chattanooga, Fla. Ar		
				Ar Quincy. Lv		
				Ar Tallahassee. Lv		
				Ar Madison. Lv		
				Ar Live Oak. Lv		
				Ar Lake City. Lv		
				Ar Baldwin. Lv		
				Ar Jacksonville, Fla. Lv		
				Eastern Time		

**REFERENCE NOTES:**

C.T.—Central Time E.T.—Eastern Time f Stops on signal.  
 M Stops to take or leave passengers to or from Tallahassee or Jacksonville or beyond.  
 N Stops to leave or take pay passengers.  
 ▲ Teche Greyhound Bus; Rail tickets honored for passengers off Train 5.

Read Down		LOUISVILLE AND ATLANTA		Read Up	
23 Daily	The Flamingo 21 Daily	Mis.	Table 9	The Flamingo 24 Daily	22 Daily
			Lv Louisville, Ky. (C.T.) Ar		
			Lv Fourth and H. Lv		
			Lv Highland Park. Lv		
			Lv South Park. Lv		
			Lv Coral Ridge. Lv		
			Lv Brooks. Lv		
			Lv Hubers. Lv		
			Lv Shepherdsville. Lv		
			Salt River		
			Lv Bardstown Jct. Lv		
			Lv Belmont. Lv		
			Lv Lebanon Jct. Lv		
			Lv Boston. Lv		
			Beech Fork		
			Lv Nelsonville. Lv		
			Lv Lyons. Lv		
			Rolling Fork		
			Lv New Haven. Lv		
			Lv Gethsemane. Lv		
			Lv New Hope. Lv		
			Lv Dants. Lv		
			Lv St. Francis. Lv		
			Lv Loretto. Lv		
			Lv St. Marys. Lv		
			Lv Lebanon. Lv		
			Lv Rileys. Lv		
			Lv Gravel Switch. Lv		
			Lv Mitchellsburg. Lv		
			Lv Parkville. Lv		
			Lv Junction City. Lv		
			Lv Stanford. Lv		
			Lv Maywood. Lv		
			Lv Crab Orchard. Lv		
			Lv Brodhead. Lv		
			Lv Mareburg. Lv		
			Lv Mt. Vernon. Lv		
			Lv Pine Hill. Lv		
			Lv Sinks. Lv		
			Lv Livingston. Lv		
			Rockcastle River		
			Lv Hazel Patch. Lv		
			Lv East Bernstadt. Lv		
			Lv Pittsburg. Lv		
			Lv London. Lv		
			Lv Fariston. Lv		
			Lv Lily. Lv		
			Lv Dortha. Lv		
			Ar Corbin (C.T.) Lv		
			Ar Corbin (E.T.) Lv		
			Eastern Time		
			Lv Corbin. Ar		
			Cumberland River		
			Lv Williamsburg, Ky. Lv		
			Ar LaFollette, Tenn. Lv		
			Ar Knoxville, Tenn. Lv		
			Gateway to Great Smoky Mtn. Natl. Park Tennessee River		
			Lv Knoxville, Tenn. Ar		
			Ar Atlanta, Ga. Lv		
			(Union Sta.)		

**REFERENCE NOTES:**

C.T.—Central Time E.T.—Eastern Time  
 A Stops to leave pay passengers from Atlanta or beyond and to take for Louisville or beyond.  
 B Stops to leave or take passengers from or to Louisville, and from or to main line points south of Lebanon Jct.  
 C Stops to leave passengers from C. V. Division and from south of Knoxville.  
 D Stops daily to take pay passengers for Lebanon Jct. and points beyond on or via Lebanon Branch; also on Sunday to take or leave pay passengers.  
 E Stops on Sundays to take or leave pay passengers.  
 f Train stops on signal.  
 G Stops daily to leave passengers from south of Lebanon Jct. and on Sundays to take or leave pay passengers.  
 M Stops to take passengers for points on Eastern Kentucky Division beyond Lagrange.  
 N Stops to take passengers for Lagrange or beyond.

Read Down		LOUISVILLE AND LEXINGTON		Read Up	
20 Daily	164 Tues. Fri. Mixed	Mis.	Table 10	169 Tues. Fri. Mixed	15 Daily
			Lv Louisville, Ky. Ar		
			Lv Baxter Ave. Ar		
			Lv Crescent Hill. Lv		
			Lv St. Matthews. Lv		
			Lv Lyndon. Lv		
			Lv Lakeland. Lv		
			Ar Anchorage. Lv		
			Ar Anchorage. Ar		
			Lv Avoca. Lv		
			Lv Eastwood. Lv		
			Lv Long Run. Lv		
			Lv Conner. Lv		
			Lv Lincoln Ridge. Lv		
			Lv Simpsonville. Lv		
			Lv Scotts. Lv		
			Lv Shelbyville. Lv		
			Lv Shelbyville. Ar		
			Lv Logan. Lv		
			Lv Finchville. Lv		
			Lv Veech. Lv		
			Lv Normandy. Lv		
			Lv Yoder. Lv		
			Lv Taylorsville. Lv		
			Lv Wakefield. Lv		
			Ar Bloomfield. Lv		
			Ar Anchorage. Ar		
			Lv O'Bannon. Lv		
			Lv Pewee Valley. Lv		
			Lv Crestwood. Lv		
			Lv Buckner. Lv		
			Lv Lagrange. Lv		
			Lv Jericho. Lv		
			Lv Smithfield. Lv		
			Lv Eminence. Lv		
			Lv Pleasureville. Lv		
			Lv Cropper. Lv		
			Lv Christiansburg. Lv		
			Lv Bagdad. Lv		
			Lv Hatton. Lv		
			Lv Benson. Lv		
			Lv Sam Clay. Lv		
			Lv Frankfort Kentucky River. Lv		
			Lv Jett. Lv		
			Lv Duckers. Lv		
			Lv Spring Station. Lv		
			Lv Midway Elkhorn River. Lv		
			Lv Paynes. Lv		
			Lv Yarnallton. Lv		
			Lv Bracktown. Lv		
			Ar Lexington, Ky. Lv		

Read Down		LOUISVILLE AND SPRINGFIELD		Read Up	
35 Ex. Sun. Mixed	Mis.	Table 11	36 Ex. Sun. Mixed		
			Lv Louisville, Ky. Ar		
			Lv Highland Park. Lv		
			Lv South Park. Lv		
			Lv Coral Ridge. Lv		
			Lv Brooks. Lv		
			Lv Hubers. Lv		
			Lv Shepherdsville. Lv		
			Lv Bardstown Jct. Ar		
			Lv Limestone Springs. Lv		
			Lv Clermont. Lv		
			Lv Lotus. Lv		
			Lv Deatsville. Lv		
			Lv Samuels. Lv		
			Lv Hunters. Lv		
			Lv Bourbon Springs. Lv		
			Lv Nazareth. Lv		
			Lv Bardstown. Lv		
			Lv Early Times. Lv		
			Lv Woodlawn. Lv		
			Lv Crookes. Lv		
			Lv Booker. Lv		
			Lv Valley Hill. Lv		
			Ar Springfield, Ky. Lv		

Table 13: PARK CITY AND GLASGOW. Read Down/Read Up. Includes routes to Park City, Stovall, Garden, Oil City, and Glasgow, Ky.

Table 14: GALLATIN AND SCOTTSVILLE. Read Down/Read Up. Includes routes to Gallatin, Tenn., and various stops in the area.

Table 15: COLUMBIA AND FLORENCE. Read Down/Read Up. Includes routes to Nashville, Tenn., Columbia, Tenn., and Florence, Ala.

Table 16: SELMA AND MYRTLEWOOD. Read Down/Read Up. Includes routes to Selma, Ala., and Myrtlewood, Ala.

Table 20: LEXINGTON AND FLEMING. Read Down/Read Up. Includes routes to Lexington, Ky., Winchester, Ky., and Fleming, Ky.

Table 21: CORBIN, PINEVILLE, HARLAN AND LYNCH. Read Down/Read Up. Includes routes to Cincinnati, O., Winchester, Ky., Corbin, Ky., Louisville, Ky., and various stops in Eastern Time.

Table 23: PINEVILLE, MIDDLESBORO AND NORTON. Read Down/Read Up. Includes routes to Pineville, Ky., Middlesboro, Ky., and Norton, Va.

REFERENCE NOTES: f Stops on signal. Bus schedules via Hazard-Jenkins Line Inc. L&N tickets NOT honored.

CHECKED BAGGAGE: Your baggage should be checked one day in advance of your departure, since some trains do not have facilities for handling baggage, and an extra day in transit is required for its movement.

Table 21: CORBIN, PINEVILLE, HARLAN AND LYNCH. Read Down/Read Up. Includes routes to Cincinnati, O., Winchester, Ky., Corbin, Ky., Louisville, Ky., and various stops in Eastern Time.

Table 22: PINEVILLE, MIDDLESBORO AND NORTON. Read Down/Read Up. Includes routes to Pineville, Ky., Middlesboro, Ky., and Norton, Va.

Through Air-Conditioned Coaches in Nos. 23 and 24 between Louisville and Corbin and in Nos. 21 and 22 between Louisville and Lynch.

REFERENCE NOTES: B—Bus stops in vicinity, but highway is not adjacent to railroad. C.T.—Central Time. E.T.—Eastern Time. f Stops on signal. Bus schedules via Southeastern Greyhound Lines Inc.; L & N tickets NOT honored.

L&N PLAYING CARDS: Distinctive L&N playing cards are on sale on all diners, and in lounge cars of THE HUMMING BIRD and THE GEORGIAN. Double decks are enclosed in attractive box, making an ideal gift.

Table 23: PINEVILLE, MIDDLESBORO AND NORTON. Read Down/Read Up. Includes routes to Pineville, Ky., Middlesboro, Ky., and Norton, Va.

Through Air-Conditioned Coach between Louisville and Norton in Trains 21-11, 12-22.

Table 24: CAMDEN JUNCTION AND CAMDEN. Read Down/Read Up. Includes routes to Camden Junction, Neenah, Estelle, and Camden.

For FAST DELIVERY and dependable, nation-wide shipping service. ALWAYS ASK THE EXPRESS MAN! RAILWAY EXPRESS AGENCY logo.

Read Down **ATHENS AND TELlico PLAINS** Read Up

303		Mls.	Table 27		304		302	
Ex. Sun. Mixed	AM		Ex. Sun. Mixed	AM	Ex. Sun. Mixed	AM		
	8.10	0	Lv Athens, Tenn.	Ar				7.50
	8.40	8	Ar Englewood	Lv				7.25
	8.40	8	Lv Englewood	Ar				10.50
f	9.00	10	Ar Nonaburg	Lv	f			10.38
f	9.14	14	Ar Doone	Lv	f			f
f	9.20	16	Ar Mt. Vernon	Lv	f			10.18
	9.40	23	Ar Tellico Plains, Tenn.	Lv				10.00

Read Down **McLEANSBORO AND SHAWNEETOWN** Read Up

35		Mls.	Table 28		34		
Ex. Sun. Mixed	AM		Ex. Sun. Mixed	AM			
	7.15	0	Lv McLeansboro, Ill.	Ar		12.50	
f	7.30	4	Lv Hoodville	Lv	f		11.50
f	7.55	8	Lv Dales	Lv	f		11.00
	8.20	12	Lv Broughton	Lv	f		10.50
f	8.30	21	Lv Eldorado	Lv	f		f
f	8.45	23	Lv Grayson	Lv	f		10.38
f	8.55	24	Lv Brooklyn	Lv	f		10.28
f	9.05	29	Lv Equality	Lv	f		10.18
	9.35	32	Lv Lawler	Lv			10.00
		35	Lv Junction	Lv			
		41	Ar Shawneetown, Ill.	Lv			

Read Down **HARTFORD AND EARLINGTON** Read Up

31		Mls.	Table 29		32		
Ex. Sun. Mixed	AM		Ex. Sun. Mixed	AM			
	11.20	0	Lv Hartford, Ky.	Ar		10.55	
f	11.35	4	Lv Bishop	Lv	f		10.40
f	11.55	6	Lv Centertown	Lv	f		10.20
f	12.15	11	Lv Kronos	Lv	f		f
f	12.30	12	Lv Smallhaus	Lv	f		10.00
f	12.45	15	Lv Moorman	Lv	f		9.45
f	1.15	19	Lv Bremen	Lv	f		9.30
f	1.35	21	Lv Lynn City	Lv	f		9.00
f	2.10	23	Lv Millport	Lv	f		f
f	2.20	27	Lv Newcoal	Lv	f		8.40
		30	Lv Anton	Lv			8.15
		36	Ar Madisonville	Lv			8.00
		40	Ar Earlington, Ky.	Lv			

Read Down **EARLINGTON AND CLAY** Read Up

40		Mls.	Table 30		41		
Ex. Sun. Mixed	PM		Ex. Sun. Mixed	PM			
	1.40	0	Lv Earlington, Ky.	Ar		5.25	
	1.50	4	Lv Madisonville	Ar		5.15	
	2.05	11	Lv Menlow	Lv	f		4.00
f	2.35	14	Lv Nebo	Lv	f		3.50
f	3.00	17	Lv Schmetzers	Lv	f		3.40
f	3.20	21	Lv Providence	Lv			3.30
		25	Lv Upland	Lv			
		29	Ar Clay, Ky.	Lv			

Read Down **ELKTON AND GUTHRIE** Read Up

23		Mls.	Table 31		24		
Mon. & Fri. Mixed	AM		Mon. & Fri. Mixed	AM			
	10.30	0	Lv Elkton, Ky.	Ar		10.20	
f	10.35	2	Lv Bradshaw	Lv	f		10.15
f	10.42	5	Lv Hermon	Lv	f		10.07
f	10.50	8	Lv Anderson	Lv	f		10.00
	11.05	12	Ar Guthrie, Ky.	Lv			9.50

REFERENCE NOTES:

f Stops on signal.

## Are you interested in a formula that will assure a successful location for your industry?

Take one of many excellent sites available in the L.&N.-served South where adequate electric power, fuel, water, and raw materials are present;

Add the leavening provided by an ample supply of cooperative and productive labor;

Stir in the assurance of profits to result from savings on distribution costs because of proximity to markets;

And include one full measure of superior L.&N. transportation service, both freight and passenger, and then spice liberally with the area's excellent climate, where living and working is a pleasure.

### THE RESULT! A CHOICE PLANT LOCATION.

L.&N.'s Industrial Development Department will gladly furnish, promptly, without obligation, and on a confidential basis, detailed information covering desirable locations for all types of industry operations.

Address inquiries to:  
**RAYMOND E. BISHA, General Industrial Agent,**  
 Louisville & Nashville Railroad,  
 908 West Broadway, Louisville 1, Kentucky

# Cruise TO HAVANA Overnight

LOW Summer time FARES

## \$42 plus taxes

Mon. Wed. Sailings Only  
 Lv. Miami Mon. Wed. Fri. 6:00 PM  
 Ar. Havana Tue. Thur. Sat. 8:00 AM  
 Lv. Havana Tue. Thur. Sun. 6:00 PM  
 Ar. Miami Wed. Fri. Mon. 8:30 AM

Round Trip \$44 plus taxes  
 30 day limit

Rates and schedules subject to change without notice.

**Special Round-Trip Excursion Includes:**  
 Two Enchanting Nights at Sea on the S. S. FLORIDA  
 (with Stateroom Accommodations)  
 Four Delicious Meals aboard Ship  
 A Day to Explore Havana

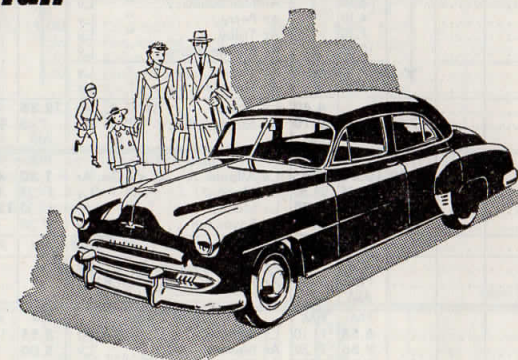
**P&O**  
 THE PENINSULAR & OCCIDENTAL STEAMSHIP COMPANY  
 MIAMI HAVANA

# Whenever you travel on the L&N you can have a new car waiting at your destination!



## through the Hertz Rail-Auto travel plan

Yes, you can enjoy the quick, safe, luxury of train travel on the L & N . . . then have a new car waiting for you at your destination. This convenient new service makes travel more exciting and more fun than ever before. You arrive refreshed, then with a car from Hertz, you can do more things—go more places. This wonderful Hertz service is yours in more than 500 cities in the United States, Canada, Great Britain, Mexico and Hawaii. Enjoy this low-cost convenience whenever you travel.



### ENJOY THE HERTZ RAIL-AUTO PLAN NOW!

1. L & N ticket agents will gladly reserve a car when you buy your rail ticket.
2. You will have a new Chevrolet or other fine car to drive as your own for an hour, day, week or as long as you wish, with gas, oil and insurance furnished.
3. You are allowed up to 50¢ for a reservation wire, and up to 50¢ taxi fare from railroad station or hotel to the Hertz station where you claim your car.
4. The cost is low, and five or six can ride for the same rate as one. For real economy and friendly, efficient service . . . L & N and Hertz is your answer!

For complete information see your Louisville & Nashville ticket agent or passenger representative.



# CONNECTING LINES TRAIN SERVICE

All Trains Operate Daily Unless Otherwise Indicated

## ATLANTA, GA.

Atlanta & West Point R. R.

Table with columns for Read Down, Read Up, and train times for Atlanta & West Point R. R. routes.

Atlantic Coast Line R. R.

Table with columns for Read Down, Read Up, and train times for Atlantic Coast Line R. R. routes.

Central of Georgia Ry.

Table with columns for Read Down, Read Up, and train times for Central of Georgia Ry. routes.

Georgia R. R.

Table with columns for Read Down, Read Up, and train times for Georgia R. R. routes.

Seaboard Air Line R.R.

Table with columns for Read Down, Read Up, and train times for Seaboard Air Line R.R. routes.

Seaboard Air Line R.R.

Table with columns for Read Down, Read Up, and train times for Seaboard Air Line R.R. routes.

## ATLANTA, GA. (Continued)

Southern Ry.

Table with columns for Read Down, Read Up, and train times for Southern Ry. routes.

## BIRMINGHAM, ALA.

Atlantic Coast Line R. R.

Table with columns for Read Down, Read Up, and train times for Atlantic Coast Line R. R. routes.

Central of Georgia Ry.

Table with columns for Read Down, Read Up, and train times for Central of Georgia Ry. routes.

Frisco Lines

Table with columns for Read Down, Read Up, and train times for Frisco Lines routes.

Seaboard Air Line R.R.

Table with columns for Read Down, Read Up, and train times for Seaboard Air Line R.R. routes.

Southern Railway

Table with columns for Read Down, Read Up, and train times for Southern Railway routes.

## CHATTAHOOCHEE, FLA.

Seaboard Air Line R.R.

Table with columns for Read Down, Read Up, and train times for Seaboard Air Line R.R. routes.

### REFERENCE NOTES:

C.T.—Central Time. E.T.—Eastern Time.
† Daily except Sunday. § Sunday only.
A Pullman passengers only between Atlanta and New York.

# CONNECTING LINES TRAIN SERVICE

All Trains Operate Daily Unless Otherwise Indicated

## CINCINNATI, OHIO

(All Lines use Union Terminal)

Table with columns for Read Down, Read Up, and train times for Cincinnati, Ohio routes.

Table with columns for Read Down, Read Up, and train times for Cincinnati, Ohio routes.

Table with columns for Read Down, Read Up, and train times for Cincinnati, Ohio routes.

Table with columns for Read Down, Read Up, and train times for Cincinnati, Ohio routes.

Table with columns for Read Down, Read Up, and train times for Cincinnati, Ohio routes.

## CINCINNATI, OHIO (Continued)

(All Lines use Union Terminal)

Table with columns for Read Down, Read Up, and train times for Cincinnati, Ohio routes.

Table with columns for Read Down, Read Up, and train times for Cincinnati, Ohio routes.

Table with columns for Read Down, Read Up, and train times for Cincinnati, Ohio routes.

\* Northern Arrow (seasonal) operates Northbound June 13, 20, 27, July 1, 3, 7, 9, 11, 14, 16, 18, 21, 23, 25, 28, 30, August 1, 4, 6, 8, 11, 13, 15, 18, 20, 22, 25, 27, 29, September 5 and 12.

## COTTONDALE, FLA.

Atlanta & St. Andrews Bay Ry.

Table with columns for Read Down, Read Up, and train times for Cottondale, Fla. routes.

## DECATUR, ALA.

Southern Ry.

Table with columns for Read Down, Read Up, and train times for Decatur, Ala. routes.

### REFERENCE NOTES:

† Daily except Sunday. ‡ Daily except Saturday. § Sunday only.
Δ Stops Sun. & Mon. mornings only.
⊙ Daily except Sat. and Sun.
□ On Sat. & Sunday leaves Cincinnati 11:35 PM.
C.T. Central Time. E.T. Eastern Time.
A Free Auto service between Covington, Va. and Hot Springs, Va. on tickets to or from Hot Springs.







RAILROAD FARES AND Effective as of

SLEEPING CAR RATES APRIL 27, 1952

Table with columns: RAILROAD FARES (In Coaches, In Pullmans) and PULLMAN RATES (Lower Berth, Upper Berth, Seat Rate For Day Travel). Rows include Atlanta, Ga., Birmingham, Ala., Cincinnati, Ohio, Evansville, Ind., Knoxville, Tenn., Louisville, Ky., Memphis, Tenn., Mobile, Ala., Nashville, Tenn., and Tampa, Fla.

Table with columns: RAILROAD FARES (In Coaches, In Pullmans) and PULLMAN RATES (Lower Berth, Upper Berth, Seat Rate For Day Travel). Rows include Knoxville, Tenn., Louisville, Ky., Memphis, Tenn., Mobile, Ala., Nashville, Tenn., and Tampa, Fla.

Table with columns: RAILROAD FARES (In Coaches, In Pullmans) and PULLMAN RATES (Lower Berth, Upper Berth, Seat Rate For Day Travel). Rows include Nashville, Tenn., Birmingham, Ala., Boston, Mass., Chicago, Ill., Cincinnati, Ohio, Cleveland, Ohio, Denver, Colo., Detroit, Mich., Evansville, Ind., Indianapolis, Ind., Kansas City, Mo., Louisville, Ky., Miami, Fla., Montgomery, Ala., New Orleans, La., Norfolk, Va., Omaha, Neb., Pennsylvania, Pa., Philadelphia, Pa., Pittsburgh, Pa., St. Louis, Mo., San Antonio, Texas, Washington, D. C., and New Orleans, La.

Table with columns: RAILROAD FARES (In Coaches, In Pullmans) and PULLMAN RATES (Lower Berth, Upper Berth, Seat Rate For Day Travel). Rows include New Orleans, (Con'd) to, Pensacola, Fla., St. Louis, Mo., and St. Louis, Mo.

†Seat rates shown above are charges for seats in sections, roomettes, or lounge seats in lounge cars. Seat rate for bedroom is two seat fares for one person, or seat fare for each person for two or more passengers.

RATES FOR OTHER SLEEPING CAR ACCOMMODATIONS

Based on charge for Lower Berth as shown in tables on pages 36 and 37. Applies only between points where through Pullman rates are published—not to combination rates. Federal tax of 15 per cent NOT included.

Table with columns: Where lower berth rate is, Master Room (one person, two or more persons), Drawing Room (one person, two or more persons), Compartment (one person, two or more persons), Bedroom (one person, two persons), Roomette (one person), and Roomette (one person, two persons).

MINIMUM NUMBER OF ADULT RAIL TICKETS REQUIRED BETWEEN POINTS ON L&N R.R. Master Room: Berth Service 2 1/2 tickets; Seat Service 5 tickets. Drawing Room: Berth Service 1 1/4 tickets; Seat Service 2 tickets. Compartment: Berth Service 1 1/10 tickets; Seat Service 1 1/2 tickets. Bedroom: Berth Serv. 1 tckt.; Seat Serv. 1 tckt. for each passenger. Roomette: Berth or Seat Service 1 ticket.

OPTIONAL ROUTES Via L&N. R.R.

The arrangements below are for Southbound travel, but the same privileges also apply Northbound between the points and via the routes indicated Southbound. Tickets read between Cincinnati and Atlanta will be honored direct, or via Nashville and NC&St.L. Ry., or via Louisville and Lebanon Junction. Tickets read between Louisville and Atlanta will be honored direct, or via Nashville and NC&St.L. Ry., or via Lexington. Tickets read between Cincinnati or Louisville and Jacksonville via Atlanta, Nashville or Montgomery, will be exchanged to read via one of these gateways, thence direct routes including routes via Savannah. Tickets read between St. Louis and Jacksonville via L&N through Louisville or Nashville or Montgomery, will be exchanged to read via one other of these gateways, thence direct routes including routes via Savannah. Tickets read between Chicago and Atlanta and beyond via C&Ei to Evansville, (or Wabash R.R. to St. Louis) thence L&N will be exchanged to read via St. Louis (or Evansville).

†Seat rates shown above are charges for seats in sections, roomettes, or lounge seats in lounge cars. Seat rate for bedroom is two seat fares for one person, or seat fare for each person for two or more passengers.

TRAFFIC DEPARTMENT

JOHN K. DENT, Vice-President
W. G. WHITSETT, Assistant to Vice-President

PASSENGER

G. U. YAGER, General Passenger Agent, Louisville 1, Kentucky
R. A. STANLEY, General Passenger Agent, New Orleans 12, Louisiana

L. A. BINKLEY, Assistant General Passenger Agent, Louisville 1, Ky.
F. C. COWHERD, Assistant General Passenger Agent, Louisville 1, Ky.
T. F. MARTIN, Assistant General Passenger Agent, Louisville 1, Ky.
P. A. WAGNER, Superintendent of Dining Cars, Louisville 1, Ky.

FREIGHT

J. K. WILLIAMS, Freight Traffic Manager, Louisville 1, Ky.
J. R. BARRY, General Freight Agent, Louisville 1, Ky.
E. C. PATTON, General Freight Agent Lines South of Decatur, Ala., Birmingham 3, Ala.
E. S. BOWMAN, Assistant General Freight Agent, Louisville 1, Ky.
R. S. McAFEE, General Foreign Freight Agent, Louisville 1, Ky.
F. A. WEBER, Assistant to Freight Traffic Manager, Louisville 1, Ky.

E. J. COTTOM, Freight Traffic Manager, Louisville 1, Ky.
E. R. ROBY, Assistant Freight Traffic Manager, Louisville 1, Ky.
P. H. GOODWYN, General Freight Agent, Louisville 1, Ky.
W. F. BURGESS, Assistant General Freight Agent, Louisville 1, Ky.
J. J. SCHULER, Assistant General Freight Agent, Louisville 1, Ky.
W. M. BREIDENTHAL, Assistant General Freight Agent, Louisville 1, Ky.
J. C. KUEBERT, Assistant to Freight Traffic Manager, Louisville 1, Ky.
G. H. UHL, Assistant to Freight Traffic Manager, Louisville 1, Ky.

COAL TRAFFIC

L. C. GOERING, Coal Traffic Manager, Louisville 1, Ky.
J. A. PARSONS, Assistant to Coal Traffic Manager, Louisville 1, Ky.
E. J. WISE, General Coal Traffic Agent, Louisville 1, Ky.

INDUSTRIAL DEVELOPMENT

R. E. BISHA, General Industrial Agent, Louisville 1, Ky.
W. P. DERMOTT, Industrial Agent, Louisville 1, Ky.
W. W. CARTER, Industrial Agent, Louisville 1, Ky.
L. I. SMITH, Industrial Agent, Birmingham 3, Ala.

RATES AND CHARGES

AGRICULTURAL DEVELOPMENT

E. J. HODDY, General Agricultural Agent, Louisville 1, Ky.
L. R. JAMES, Immigration Agent, Biloxi, Miss.
W. G. ADSMOND, Agricultural Agent, Nashville 3, Tenn.
D. J. MEADOR, Agricultural Agent, Greenville, Ala.
T. M. FARIS, Forestry and Agricultural Agent, Atmore, Ala.

PASSENGER AND FREIGHT REPRESENTATIVES

ANNISTON, ALA.— Terminal R. R. Station, Phone 41— W. A. ROELKER, General Agent. C. DIAMOND, Traveling Freight Agent.
ATLANTA 3, GA.— Room 907, 101 Marietta St. Bldg., Phone Walnut 1400— CLARK DUNN, Division Passenger Agent. MARTIN KINZEL, Traveling Passenger Agent. 67 Luckie St., Piedmont Hotel, Phone Main 5131— G. M. DUGAN, City Passenger Agent. O. M. AHERN, Passenger Representative. G. F. SLAYTON, Joint City Ticket Agent. Union Station, Phone Walnut 3666 T. F. LAWRENCE, Ticket Agent. Room 901, 101 Marietta St. Bldg., Phone Walnut 0511— W. C. WATHEN, Division Freight Agent. W. E. ROBERTSON, Commercial Agent. J. E. FAIRLEY, Traveling Freight Agent. W. O. MATTHEWS, Freight Traffic Agent. T. J. CLEBRON, Freight Traffic Agent.
BIRMINGHAM 3, ALA.— L & N Station, 4 North 20th St., Phone 4-0341— MARSHALL HAYNES, Division Passenger Agent. E. G. ALLENSWORTH, Traveling Passenger Agent. 2004 3rd Avenue North, Phone 3-9153— J. D. LEE, City Passenger Agent. L. W. MCKINLEY, City Ticket Agent. L & N Station, Phone 4-0311 C. W. COLEMAN, Ticket Agent. 1901 Morris Ave., Phone 3-5211— G. C. LLOYD, Division Freight Agent. E. W. LURTON, Commercial Agent. J. R. CORMANY, Traveling Freight Agent. J. L. HOLLOWAY, Freight Traffic Agent. ERIC ELLIS, Freight Traffic Agent.

CHICAGO 3, ILL.— 1327 First Federal Bldg., 7 S. Dearborn St., Phone State 2-9360— T. M. STRANE, General Agent Passenger Dept. R. F. SUMMERVILLE, Traveling Passenger Agent. C. C. CASE, City Passenger Agent. 1333 First Federal Bldg., 7 S. Dearborn St., Phone State 2-8430— C. E. WOLF, General Agent. W. R. WALLACE, Commercial Agent. HAL W. BROWN, Traveling Freight Agent. I. T. WESTERMAN, Traveling Freight Agent. L. T. COOLEY, Freight Traffic Agent. L. T. CHILDERS, Freight Traffic Agent. J. R. CLAXON, Coal Traffic Agent. Z. E. SCOTT JR., Coal Traffic Agent.
CINCINNATI 2, OHIO— 703 Dixie Terminal Bldg., Phone Main 6533— TYNDALL BALL, Division Passenger Agent. JOHN H. GENTRY, Traveling Passenger Agent. 109 Dixie Terminal, Phone Main 2574— LEONARD F. VOGT, City Passenger Agent. RUFUS KINGCADE, Passenger Representative. MARK LITTON, City Ticket Agent. Union Terminal, Phone Cherry 8100 MILTON J. ECKHOFF, Passenger Representative. C. W. WOODWARD, Ticket Agent. 733 Dixie Terminal Bldg., Phone Parkway 7130— F. C. STREET, Division Freight Agent. J. F. MANN, Commercial Agent. S. K. JOHNSON, Traveling Freight Agent. J. D. BUEHLER, Freight Traffic Agent. L. D. MISKELL, Freight Traffic Agent. L. T. SMITH, Coal Traffic Agent.
CLARKSVILLE, TENN.— First National Bank Bldg., Phone 4916— J. A. COX, Commercial Agent.

CLEVELAND 14, OHIO— 704 Hippodrome Bldg., Phone Main 1-6629— J. I. ZEMPKKE, District Passenger Agent. 704 Hippodrome Bldg., Phone Cherry 1-3432— T. R. HOOK, JR., General Agent. J. H. KELLEY, Traveling Freight Agent. W. F. ELDER, Traveling Freight Agent. M. R. NEEL, Jr., Freight Traffic Agent.
DALLAS 1, TEX.— 703 Kirby Bldg., Phone RA-5273— S. W. FERRELL, Commercial Agent. T. P. TROY, Traveling Freight Agent.
DETROIT 26, MICH.— 1104 Lafayette Bldg., Phone Woodward 1-3214 F. W. OSLIE, District Passenger Agent. OTTO EHRINGER, City Passenger Agent. K. G. SCOTT, General Agent. C. A. QUILLAN, Traveling Freight Agent. J. W. POLAND, Traveling Freight Agent. A. M. MILLER, Freight Traffic Agent. J. G. HETTIGER, Coal Traffic Agent.
EAST ST. LOUIS, ILL.— National Stock Yards, Phone Bridge 6696— L. P. McGRAIL, Freight Traffic Agent.
EVANSVILLE 8, IND.— 101 Main St., Phone 3-2605— D. C. McGEHEE, District Passenger Agent. R. L. MOYE, Passenger Agent. J. H. GRAY, Joint City Ticket Agent, Phone 3-3962 L & N Station, Phone 5-5238— A. F. STUEVE, Ticket Agent. L & N Station, Phone 5-3507— E. L. BLANDFORD, Division Freight Agent. P. J. WIBBLES, Traveling Freight Agent. R. I. JAMES, Traveling Freight Agent. D. F. JONES, Freight Traffic Agent.

HOUSTON 2, TEX.— 231 Esperson Bldg., Phone Fairfax 3382— H. L. SWEENEY, District Passenger Agent. P. W. LAWRENCE, Commercial Agent. L. M. DUNFORD, Traveling Freight Agent.
INDIANAPOLIS 4, IND.— 308 Merchants Bank Bldg., Phone Franklin 2785— W. H. LASHLEY, Commercial Agent. GUY WEATHERS, Freight Traffic Agent.
JACKSONVILLE 2, FLA.— 308 Graham Bldg., Phone 6-8226— J. W. MOORE, General Agent Passenger Department. J. S. STALLINGS, Traveling Passenger Agent. 310 Graham Bldg., Phone 6-8307— J. W. SELLERS, General Agent. E. H. JAMES, Freight Traffic Agent.
KANSAS CITY 6, MO.— 334-5 Railway Exchange Bldg., Phone Victor 6774— I. J. BORDERS, General Agent. S. R. CHRISTENSEN, Traveling Freight Agent. R. M. BRENNAN, Freight Traffic Agent.
KNOXVILLE 2, TENN.— L & N Station, Phone 3-6193— J. J. PORTWOOD, District Passenger Agent. J. W. SMITH, City Passenger Agent. L & N Station, Phone 2-0833 J. A. HOLT, Ticket Agent. L & N Station—Phone 2-3187— R. H. WILSON, Division Freight Agent. R. F. BELL, Traveling Freight Agent. L. W. DIAMOND, Traveling Freight Agent. S. L. CARSON, Freight Traffic Agent. C. R. MYNATT, Freight Traffic Agent.
LEXINGTON 6, KY.— Union Station, Ticket Office, Phone 3-4140— E. J. TEED, Ticket Agent. Union Station, Freight and Passenger Office, Phone 3-4149— RICHARD STITES, Dist. Frt. and Pass'r. Agt. F. E. HANSELMAN, Traveling Freight Agent. G. C. WELSH, Freight Traffic Agent.
LITTLE ROCK, ARK.— 314 Gazette Bldg., Phone 4-2827— E. J. EDMONDSON, Commercial Agent.
LOS ANGELES 22, CALIF.— P. O. Box 6802 P. B. SHELTON, Commercial Agent.
LOUISVILLE 2, KY.— 110 Starks Bldg.—Phone Wabash 5325— E. G. JONES, District Passenger Agent. D. C. LANIER, City Passenger Agent. C. A. PRICE, Passenger Representative. L. R. WORLEY, Passenger Agent. J. M. O'FARRELL, City Ticket Agent. Union Station, Phone Jackson 2241— R. F. PENN, Ticket Agent. Baxter Avenue Station, Phone Jackson 1836 J. S. YOUNGER, Ticket Agent. 908 W. Broadway—Phone Wabash 1121— R. P. ETHRIDGE, Asst. to General Passenger Agent. H. L. RASER, Traveling Passenger Agent. H. N. DEVOL, Coal Freight Agent. 908 W. Broadway, Room 110, Phone Wabash 4149— E. W. SIMPSON, General Agent. A. C. LAUER, Freight Traffic Agent. IVAN SEIBERT, JR., Freight Traffic Agent. R. J. FLANAGAN, Freight Traffic Agent. F. R. BUMPUS, Traveling Freight Agent.

MACON, GA.— 201 Terminal Station, Phone 3-4683— A. W. KENDRICK, Commercial Agent. E. G. WHITE, Traveling Freight Agent.
MEMPHIS 3, TENN.— 74 Monroe Avenue, Phone 5-3819— A. E. GROVES, District Passenger Agent. J. E. HOLDEMAN, City Passenger Agent. L. C. POLLARD, Joint City Ticket Agent, Phone 8-0567— Peabody Hotel—F. R. SCHUTT, Ticket Agent. Union Station, Phone 8-4101— A. H. McCULLOUGH, Ticket Agent. 920 Falls Bldg., Phone 8-5851 W. C. DILLARD, Division Freight Agent. J. W. GLEESON, Traveling Freight Agent. R. O. STEWART, Freight Traffic Agent. T. O. JACKSON, Freight Traffic Agent.
MIAMI 32, FLA.— 215 S. E. First St., Phone 3-0911— L. L. SARGENT, District Passenger Agent. J. A. HUGHES, Jr., City Passenger Agent. 1142 Ingraham Bldg., Phone 2-3674— C. C. VAUGHN, Commercial Agent. C. H. RYAN, Traveling Freight Agent.
MOBILE 11, ALA.— 69 St. Francis St., Phone 2-2776— F. W. HOLDER, District Passenger Agent. F. M. HARBIN, City Ticket Agent. M. O. LARCHE, Asst. City Passenger and Ticket Agent. L & N Station, Phone 2-1761— C. J. HAYS, Ticket Agent. 406 First National Bank Bldg., Phone 3-2713— H. W. LEE, Division Freight Agent. E. M. HUNT, Freight Traffic Agent. G. S. FINNEGAN, Freight Traffic Agent.
MONTGOMERY 4, ALA.— Union Station—Phone 3-3757— R. A. LAUN, District Passenger Agent. H. W. ROWELL, Passenger Agent. Union Station, Phone 7385— J. O. FRY, Ticket Agent. Union Station, Phone 7741— C. A. WAGNER, General Agent. R. C. MUNDY, Traveling Freight Agent. RUDOLPH RUSSELL, Freight Traffic Agent.
NASHVILLE 3, TENN.— 811 Third National Bank Bldg., Phone 6-0865— H. T. SCHNEIDER, District Passenger Agent. T. H. NOWELL, City Passenger Agent. 168 Fourth Avenue, North, Phone 6-3124— W. A. LIGHTFOOT, City Ticket Agent. Union Station, Phone 5-8441— H. W. LOFTIN, Ticket Agent. 811 Third National Bank Bldg., Phone 6-8145— C. M. COX, Division Freight Agent. J. L. VINEYARD, Traveling Freight Agent. J. E. NARON, Freight Traffic Agent. W. R. ALLRED, Freight Traffic Agent.
NEW ORLEANS 12, LA.— 1413 Whitney Bank Bldg., Phone Raymond 1346— R. A. STANLEY, General Passenger Agent. 229 St. Charles St., Phone Canal 4191— A. E. JACKSON, District Passenger Agent. C. L. SHUMAKER, Traveling Passenger Agent. E. S. MIDDLETON, City Passenger Agent. J. D. HAMPTON, Passenger Representative. L. P. LAGARDE, Passenger Representative. WM. J. RAINEY, City Ticket Agent. L & N Station, Phone Magnolia 3117— HENRY A. WALTZ, Ticket Agent. 1410 Whitney Bank Bldg., Phone Raymond 3284— J. E. POWER, Division Freight Agent. G. W. KINGSMILL, Commercial Agent. J. S. DAILEY, Traveling Freight Agent. B. J. MANNING, Freight Traffic Agent. F. A. REPPPEL, Freight Traffic Agent.

NEW YORK 36, N. Y.— Room 942, 500 Fifth Ave., at 42nd St., Phone Penna. 6-0388— J. E. CORNELL, General Eastern Passenger Agent. THEO. C. BLACK, District Passenger Agent. JOHN J. HOULIHAN, City Passenger Agent. Room 1630, 11 West 42nd St., Phone Chickering 4-3220— GEO. W. RYAN, JR., General Eastern Freight Agent. F. A. HUEBNER, Commercial Agent. S. E. FRANEY, Foreign Freight Agent. W. C. FORSYTHE, Traveling Freight Agent. W. J. McDONALD, Traveling Freight Agent. D. J. McCABE, Freight Traffic Agent.
ORLANDO, FLA.— 706 Metcalf Bldg., Phone 3-1501— E. M. BLANKNER, Commercial Agent.
OWENSBORO, KY.— L & N Station—Phone 3-1119 C. H. HUFNAGEL, Commercial Agent.
PENSACOLA, FLA.— L & N Station—Phone 8-1619— J. C. McCLOY, District Passenger Agent. H. E. FENNELLY, Passenger Agent. L & N Station, Phone 8-1616— W. O. HOLLOWAY, Ticket Agent. L & N Station, Phone 8-4488— T. P. WASHBURN, Division Freight Agent. J. M. BROCK, Freight Traffic Agent. Commenencia Street Wharf—Phone 4510 W. S. DUNCAN, Port Manager.
PITTSBURGH 22, PA.— 444 Henry W. Oliver Bldg., Phone Atlantic 1-9610— C. R. McFARLAND, General Agent. R. T. STOUT, Traveling Freight Agent. D. W. BUCKSHORN, Traveling Freight Agent. C. M. BEELER, Freight Traffic Agent.
PORTLAND 7, ORE.— P. O. Box 882 C. T. LINDEMANN, Commercial Agent.
SAN FRANCISCO 5, CALIF.— 697 Monadnock Bldg., Phone Exbrook 2-1366— F. J. BANTLE, General Western Freight Agent. R. L. WESTERMAN, Traveling Freight Agent.
SELMA, ALA.— L & N Station, Phone 229— C. C. DAY, Commercial Agent.
ST. LOUIS 2, MO.— 906 Landreth Building, Phone Central 8006— E. V. GRAEF, Division Passenger Agent. S. H. WILHOITE, Traveling Passenger Agent. W. R. GREGORY, City Passenger Agent. 318 North Broadway, Phone Central 8008— C. A. BRUNS, City Ticket Agent. Union Station, Phone Garfield 6600— J. R. NEWTON, Passenger Agent. F. S. DONNELLY, Ticket Agent. 910 Landreth Building, Phone Central 8001— J. J. GLEESON, Division Freight Agent. H. B. ROTHWEILER, General Agent. E. H. ELKIN, Traveling Freight Agent. E. C. MYERS, Freight Traffic Agent. L. H. DE MOORE, Freight Traffic Agent.
TAMPA 1, FLA.— 1109 First National Bank Bldg., Phone 2-2046— J. P. MIDDLETON, Traveling Passenger Agent. E. B. STANLEY, Commercial Agent. R. G. McGEE, Freight Traffic Agent.
WASHINGTON 5, D. C.— 627 Woodward Bldg., Phone Republic 2552— J. H. GOOCH, General Agent.