



SUNSET AREA TIMETABLE #1

Effective 0001 Sunday, March 07, 2004

D. J. Duffy, Executive Vice President - Operations
J. H. Koch, Vice President - Transportation
M. F. Kelly, Vice President - Northern Region
J. M. Santamaria, Vice President - Central Region
S. R. Barkley, Vice President - Southern Region
T. F. Jacobi, Vice President - Western Region
W. E. Wimmer, Vice President - Engineering
S. J. McLaughlin, Vice President - Quality and Process Improvement
D. H. Jacobson, Vice President - Operating Services
R. S. Blackburn, Vice President - Premium Operations
J. H. Rebensdorf, Vice President - Network Planning & Operations
R. M. Grimaila, Sr. AVP - Safety, Environmental & Security
B. J. Kanuch, Chief Mechanical Officer
J. L. Raffety, AVP Coal Operations

This document supersedes:

Union Pacific Railroad El Paso Timetable 2 effective Jan 07, 2001

EXPLANATION OF CHARACTERS

Symbol Represents		Symbol Represents	
CTC	CENTRALIZED TRAFFIC CONTROL	(11)	SPECIAL INSTRUCTIONS APPLY ITEM 11
CTC	CENTRALIZED TRAFFIC CONTROL	N	NORTHWARD
ATC	AUTOMATIC TRAIN CONTROL	S	SOUTHWARD
ATC	AUTOMATIC TRAIN CONTROL	E	EASTWARD
ABS	AUTOMATIC BLOCK SIGNAL SYSTEM	W	WESTWARD
DT	DOUBLE TRACK	C	CENTER
TWC	TRACK WARRANT CONTROL	+	HEAD - END RESTRICTION ONLY
TWC	TRACK WARRANT CONTROL	(R)	REDUCE / RESUME SPEED SIGNS AT OTHER THAN PRESCRIBED LOCATION
ABS	AUTOMATIC BLOCK SIGNAL SYSTEM	(#)	HOT BOX AND DRAGGING EQUIPMENT DETECTOR STATION EQUIPPED WITH RADIO TRANSMITTED VERBAL INDICATOR
#MT	MULTIPLE MAIN TRACK - # (number MT's)	#	HOT BOX DETECTOR STATION EQUIPPED WITH RADIO TRANSMITTED VERBAL INDICATOR
!	SIDING WITH ENTERING SIGNAL ALLOWING ASPECT MORE FAVORABLE THAN LUNAR	@	HOT BOX AND DRAGGING EQUIPMENT DETECTOR STATION EQUIPPED WITH RADIO TRANSMITTED VERBAL INDICATOR - TALK ON DEFECT ONLY WITH HOLD OR STOP SIGNALS
(A)	AUTOMATIC INTERLOCKING	(@)	WHEEL IMPACT DETECTORS EQUIPPED WITH RADIO TRANSMITTED VERBAL DEFECT INDICATORS - TALK ON DEFECT ONLY
B	BASE RADIO STATION	\$	HOT BOX DETECTOR STATION EQUIPPED WITH RADIO TRANSMITTED VERBAL INDICATOR - TALK ON DEFECT ONLY
D	DRAW BRIDGE	%	DRAGGING EQUIPMENT DETECTORS WITH RADIO TRANSMITTED VERBAL INDICATOR - TALK ON DEFECT ONLY
(G)	GATE-NORMAL POSITION AGAINST CONFLICTING ROUTE	&	HIGH WIDE SHIFTED LOAD AND DRAGGING EQUIPMENT DETECTOR EQUIPPED WITH RADIO TRANSMITTED VERBAL INDICATOR
G	GATE-NORMAL POSITION AGAINST THIS SUBDIVISION		
(M)	MANUAL INTERLOCKING		
(S)	STOP SIGN		
T	TURNING FACILITY		
(X)	RAILROAD CROSSING AT GRADE		
X	CROSSOVER BETWEEN MAIN TRACKS DUAL CONTROL SWITCHES		
Y	YARD LIMITS		
(Z)	MANUAL INTERLOCKING WITH A RELEASE BOX AND A M/W KEY RELEASE, IF EQUIPPED		
(9)	SPECIAL INSTRUCTIONS APPLY ITEM 9		

OTHER AVAILABLE REFERENCE MATERIAL

Area #	Area Name	Timetable Item #	Area Profile
1	Portland	PB-27020	Not Available
2	Salt Lake City	PB-27021	Not Available
3	Roseville	PB-27022	Not Available
4	Los Angeles	PB-27023	Not Available
5	Sunset	PB-27024	Not Available
6	Denver	PB-27025	Not Available
7	North Platte	PB-27026	Not Available
8	Council Bluffs	PB-27027	Not Available
9	Kansas City	PB-27028	Not Available
10	Salina	PB-27029	Not Available
11	Iowa	PB-27030	Not Available
12	Twin Cities	PB-27031	Not Available
13	Chicago	PB-27032	Not Available
14	St. Louis	PB-27033	Not Available
15	North Little Rock	PB-27034	Not Available
16	Dallas / Ft. Worth	PB-27035	Not Available
17	Houston	PB-27036	Not Available
18	San Antonio	PB-27037	Not Available
0	All Area 3 Hole Singles	PB-27038	
0	3" Binder	PB-27019	
0	Area Tabs (19 Each)	PB-27018	
0	System Special Instructions	PB-27015	

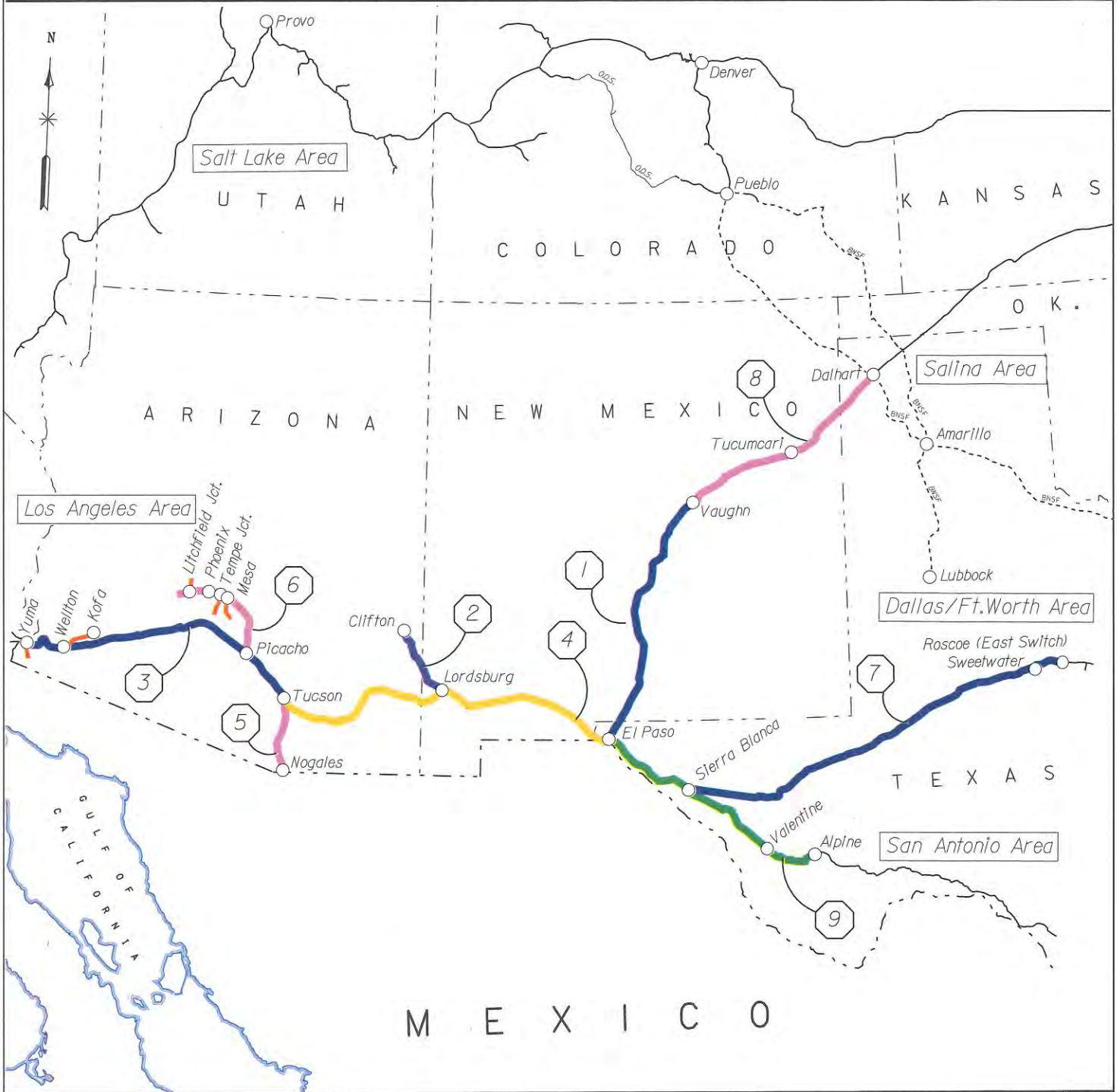


Building America

SUNSET AREA

TIMETABLE #1

Effective 0001 Sunday, March 7, 2004



1. CARRIZOZO.....(0680)
 2. CLIFTON.....(0690)
 3. GILA.....(0675)

4. LORDSBURG.....(0678)
 5. NOGALES.....(0683)
 6. PHOENIX.....(0685)

7. TOYAH.....(0515)
 8. TUCUMCARI.....(0682)
 9. VALENTINE.....(0648)

SUNSET AREA

SUBDIVISION / INDUSTRIAL LEAD / MAPS :	PAGE
CARRIZOZO (0680).....	16
Chandler Industrial Lead (0688).....	21
CLIFTON (0690).....	24
El Paso Terminal Map.....	9
Ft. Bliss Industrial Lead: (0681).....	3
GILA (0675).....	10
International Industrial Lead (0649).....	7
Litchfield Industrial Lead (0686).....	21
LORDSBURG (0678).....	4
NOGALES (0683).....	22
PHOENIX (0685).....	20
Phoenix Yard.....	19
Roll Industrial Lead (0689).....	21
Somerton Industrial Lead (0676).....	12
Tempe Industrial Lead (0687).....	21
TOYAH (0515).....	14
Tucson Yard.....	13
TUCUMCARI (0682).....	18
VALENTINE (0648).....	2

SUNSET AREA

Station Name	Circ7 #	Subdivision	Page #	Station Name	Circ7 #	Subdivision	Page #
36TH STREET		LORDSBURG	4	GAGE	SP110	LORDSBURG	4
36TH STREET		GILA	10	GALLINAS	SW761	CARRIZOZO	16
ADEN	SP050	LORDSBURG	4	GARY	SP157	LORDSBURG	4
AFTON	SP039	LORDSBURG	4	GERMANN	LB400	PHOENIX	20
AKELA	SP069	LORDSBURG	4	GILA BEND	SP440	GILA	10
ALFALFA	TP854	VALENTINE	2	GOZAR	TP676	TOYAH	14
ALPINE SIDING	SO607	VALENTINE	2	HOT WELLS	SO712	VALENTINE	2
ANCHO	SW780	CARRIZOZO	16	HYDER	LB515	PHOENIX	20
APACHE		LORDSBURG	4	IATAN	TP492	TOYAH	14
ARAGON	SO640	VALENTINE	2	ICEHOUSE CROSSOVER		LORDSBURG	4
ARCADE	TP579	TOYAH	14	ISER	TP815	VALENTINE	2
ARLINGTON	LB476	PHOENIX	20	KENDALL	LB427	PHOENIX	20
ARVID	SW657	TUCUMCARI	18	KING	SW539	TUCUMCARI	18
AZTEC	SP484	GILA	10	KINO	SP326	GILA	10
BELEN	TP846	VALENTINE	2	KINTER	SP545	GILA	10
BON	SP388	GILA	10	LANARK	SP029	LORDSBURG	4
BORACHO	TP709	TOYAH	14	LASCA	TP777	VALENTINE	2
BOSQUE	SP433	GILA	10	LEVINSON	TP691	TOYAH	14
BOWIE	SP200	LORDSBURG	4	LISBON	SP139	LORDSBURG	4
BUCKEYE	LB462	PHOENIX	20	LIZARD	SP012	LORDSBURG	4
CAMPBELL STREET		LORDSBURG	4	LOBO	SO688	VALENTINE	2
CARNE	SP078	LORDSBURG	4	LORAINE	TP467	TOYAH	14
CARRIZOZO	SW804	CARRIZOZO	16	LORDSBURG	SP149	CLIFTON	24
CASA GRANDE	SP377	GILA	10	LORDSBURG	SP149	LORDSBURG	4
CASHION	LB445	PHOENIX	20	LOS TANOS	SW666	TUCUMCARI	18
CAVOT		LORDSBURG	4	LUZENA	SP207	LORDSBURG	4
CHAMISO	SP273	LORDSBURG	4	MAGMA	LB389	PHOENIX	20
CHERRY AVENUE	SP317	NOGALES	22	MALLIE	SO723	VALENTINE	2
CHERRY AVENUE	SP317	GILA	10	MARFA	SO628	VALENTINE	2
CHUB	TP549	TOYAH	14	MARICOPA	SP398	GILA	10
CIVIC CENTER		LORDSBURG	4	MATER	SW599	TUCUMCARI	18
CLIFTON	LB062	CLIFTON	24	McNARY	TP803	VALENTINE	2
CLINT	TP839	VALENTINE	2	MESCAL	SP276	LORDSBURG	4
COAHOMA	TP503	TOYAH	14	METZ	TP594	TOYAH	14
COCHISE	SP234	LORDSBURG	4	MOBILE	SP412	GILA	10
COLFRED	SP512	GILA	10	MOHAWK	SP503	GILA	10
COLLADO	SO701	VALENTINE	2	MONAHANS	TP609	TOYAH	14
COOLIDGE	LB377	PHOENIX	20	MONDEL	SP164	LORDSBURG	4
COYOTE	SW791	CARRIZOZO	16	MORITA	TP524	TOYAH	14
DALHART	SW523	TUCUMCARI	18	NAVISKA	SP342	GILA	10
DAVIS	SW680	TUCUMCARI	18	NEWMAN	SW927	CARRIZOZO	16
DEMING	SP090	LORDSBURG	4	NOAH	SP519	GILA	10
DESERT	SW911	CARRIZOZO	16	NOGALES	LB380	NOGALES	22
DOME	TP479	TOYAH	14	OBAR	SW576	TUCUMCARI	18
DOME	SP542	GILA	10	OLGA	SP191	LORDSBURG	4
DONA	SP060	LORDSBURG	4	OMLEE	SW865	CARRIZOZO	16
DUNES	SW878	CARRIZOZO	16	OROGRANDE	SW899	CARRIZOZO	16
DURAN	SW733	CARRIZOZO	16	OSCURO	SW818	CARRIZOZO	16
EAGLE FLAT	TP754	TOYAH	14	OTERO	SW842	CARRIZOZO	16
EAST LEG WYE		LORDSBURG	4	PAISANO	SO617	VALENTINE	2
EAST YARD	SP558	GILA	10	PALOMAS	SW628	TUCUMCARI	18
EFAW	SW749	CARRIZOZO	16	PASTURA	SW696	TUCUMCARI	18
END OF MAIN TRACK		PHOENIX	20	PECOS SIDING	TP652	TOYAH	14
ENID	SP406	GILA	10	PEGASUS	TP564	TOYAH	14
ESTRELLA	SP421	GILA	10	PHOENIX YARD		PHOENIX	20
FENNER	SP265	LORDSBURG	4	PICACHO	SP359	GILA	10
FINLAY	TP790	VALENTINE	2	PICACHO	SP359	PHOENIX	20
FORTUNA	SP552	GILA	10	PIEDRA	SP456	GILA	10

SUNSET AREA

Station Name	Circ7 #	Subdivision	Page #	Station Name	Circ7 #	Subdivision	Page #
PIEDRAS STREET	TP860	LORDSBURG	4	WYMOLA	SP352	GILA	10
PIEDRAS STREET	TP860	VALENTINE	2	YUMA	SP563	GILA	10
PLANEPORT	SW941	CARRIZOZO	16				
PYOTE	TP624	TOYAH	14				
QUEBEC	SO657	VALENTINE	2				
RASO	SP215	LORDSBURG	4				
RED ROCK	SP345	GILA	10				
RILLITO	SP334	GILA	10				
RIO RICO		NOGALES	22				
ROMERO	SW556	TUCUMCARI	18				
ROSCOE	TP456	TOYAH	14				
ROSEDALE		VALENTINE	2				
RYAN	SO649	VALENTINE	2				
SAN SIMON	SP183	LORDSBURG	4				
SENTINEL	SP466	GILA	10				
SEPAR	SP131	LORDSBURG	4				
SHAWMUT	SP426	GILA	10				
SIBYL	SP260	LORDSBURG	4				
SIERRA BLANCA	TP768	TOYAH	14				
SIERRA BLANCA	TP768	VALENTINE	2				
SIMMONS	SW643	TUCUMCARI	18				
SMALL	TP785	VALENTINE	2				
SOUTH SIDING		CLIFTON	24				
SOUTH YARD		GILA	10				
STANTON	TP534	TOYAH	14				
STANWIX	SP476	GILA	10				
STEINS	SP169	LORDSBURG	4				
STOCKHAM	SP322	GILA	10				
STOVAL	SP495	GILA	10				
STRAUSS	SP019	LORDSBURG	4				
SWEETWATER DEPOT	TP448	TOYAH	14				
TECOLOTE	SW770	CARRIZOZO	16				
THEBA	SP450	GILA	10				
THREE RIVERS	SW831	CARRIZOZO	16				
TOLTEC	SP368	GILA	10				
TORNILLO	TP826	VALENTINE	2				
TOWER 196		LORDSBURG	4				
TOWER 47 EAST		CARRIZOZO	16				
TOWER 47 WEST	TP859	CARRIZOZO	16				
TOWER 47 WEST	TP859	LORDSBURG	4				
TOYAH	TP666	TOYAH	14				
TUCSON YARD	SP314	GILA	10				
TUCUMCARI	SW612	TUCUMCARI	18				
TULLY	SP254	LORDSBURG	4				
TUNIS	SP100	LORDSBURG	4				
ULMORIS	SP145	LORDSBURG	4				
VAIL CROSSOVERS		LORDSBURG	4				
VALENTINE	SO665	VALENTINE	2				
VAN HORN	TP735	TOYAH	14				
VANAR	SP176	LORDSBURG	4				
VAUGHN	SW718	CARRIZOZO	16				
VAUGHN	SW718	TUCUMCARI	18				
WELLTON	SP526	GILA	10				
WENDELL	SO677	VALENTINE	2				
WEST WELLTON		GILA	10				
WILD HORSE	TP727	TOYAH	14				
WILLCOX	SP223	LORDSBURG	4				
WILNA	SP121	LORDSBURG	4				

VALENTINE SUBDIVISION (0648)

Mile Post	Rule 6.3	CP #'s	Radio Display:		Sta. #'s	Siding Feet
			WEST ▼ STATIONS	EAST ▲		
610.7	CTC	SA611	ALPINE SIDING (10.3)		SO607	8314
619.3		SA619	PAISANO		SO617	8647
619.6		SA620				
621.0		SA621	(11.0)			
630.3		SA630	MARFA		SO628	8375
632.0		SA632	(11.8)			
642.1		SA643	ARAGON		SO640	8410
643.8		SA644	(9.7)			
651.8		SA652	RYAN		SO649	8362
652.5		SA653	(7.3)			
659.1		SA660	QUEBEC		SO657	8399
660.9		SA661	(7.9)			
667.1		SA667	VALENTINE		SO665	8071
668.8		SA669	(11.7)			
678.8		SA679	WENDELL		SO677	8366
680.5		SA680	(11.5)			
690.3		SA690	LOBO		SO688	8394
692.0		SA692	(13.4)			
702.8		SA703	COLLADO		SO701	8661
705.4		SA705	(10.3)			
713.7		SA714	HOT WELLS		SO712	9368
715.7		SA716	(11.3)			
725.3		SA725	MALLIE		SO723	8375
727.0		SA727	(11.8)			
737.1		SA737	SIERRA BLANCA	(11.1)	TP768	10425
739.3		SA739	(8.1)			
745.2		SA745	LASCA		TP777	8507
747.0		SA747	(5.2)			
750.4		SA750	SMALL		TP785	8479
752.2		SA752	(9.5)			
760.1	SA760	FINLAY		TP790	7835	
761.7	SA762	(9.3)				
769.3	SA769	McNARY		TP803	8306	
771.0	SA771	(13.6)				
782.6	SA783	ISER		TP815	9978	
784.6	SA785	(10.3)				
792.5	SA792	TORNILLO		TP826	11589	
794.9	SA794	(14.0)				
807.1	SA807	CLINT		TP839	8705	
808.9	SA809	(6.3)				
815.2	CTC 2MT	SA815	BELEN (4.6)		TP846	
819.8		SA820	ROSÉDALE (3.2)	X		
823.0		SA823	ALFALFA (4.0)		TP854	
827.0		SA827	PIEDRAS STREET	BTX	TP860	

(212.4)

SI-01 MAIN TRACK AUTHORITY

CTC between:
MP 607.2 and MP 827.0.

SI-02 MAXIMUM SPEED TABLE

Maximum Speed	MPH		
Between Mileposts	PSGR	FRT	EXP
610.7 and 827.0			
(Except as Below).....	79	70	75
613.1 and 616.6.....	70	60	--
616.6 and 621.6.....	50	45	--
621.6 and 624.2.....	75	70	--
624.2 and 625.3.....	55	55	--
629.0 and 630.2.....	45	45	--
630.2 and 633.7.....	60	60	--
638.1 and 640.4.....	50	50	--
704.7 and 706.5.....	60	60	--
742.7 and 745.3.....	70	70	70
745.3 ** W.....	70+	50+	55+
746.9 ** W.....	70+	55+	60+
746.9 and 748.3.....	70	70	70
748.3 ** W.....	70+	55+	60+
748.3 and 756.5.....	70	70	70
756.5 and 759.3.....	55	55	55
760.1 and 763.6.....	70	70	70
763.6 ** E.....	70+	55+	60+
763.6 and 767.2.....	75	70	75
767.2 and 784.6.....	70	70	70
784.6 ** E.....	70+	55+	60+
784.6 and 790.7.....	70	70	70
790.7 ** W.....	70+	50+	55+
791.4 and 792.2.....	60	60	60
810.8 ** E.....	70+	55+	60+
823.0 and 827.0 Trk.1 & Trk.2.....	45	45	45

** Only freight trains exceeding 80 TPOB must comply with speed restriction. Speed restriction will not apply when signal at speed restriction location displays CLEAR.

SI-03 OTHER SPEED RESTRICTIONS

Maximum Speed	MPH
1. Thru Sidings & Turnouts (No Exceptions)	
2. Dual Control Switch Turnouts	
CP SA815 (Belen).....	50
CP SA737 (Most eastern switch).....	60
CP SA737 (Most western switch).....	30
3. Misc. Speed Restrictions	
Ashley: Trks 754-799 (old Zone 10).....	5

VALENTINE SUBDIVISION (0648)

SI-04 MAIN TRACK DESIGNATIONS
Two Main Tracks Between:
 MP 815.3 and MP 827.0.
CP SA620 designated as "Paisano Jct."

SI-05 MILEPOST EQUATIONS
 MP752.57 = MP756.49
 MP827.00 = MP1298.20 on the Lordsburg Subdiv.

SI-06 RCL OPERATIONS
RULE 35.5.1 DESIGNATED REMOTE CONTROL AREAS:
 Following are Remote Control Areas in the El Paso Terminal Area;
 1. Alfalfa Yard Area - between MP820.03 and MP822.9 on the Valentine Subdivision.
 2. Dallas Yard Area - between MP1296.5 and MP1295.7 on the Lordsburg Subdivision.
 3. River Yard Area - between MP1.0 and MP2.8 on the International Industrial Lead, Lordsburg Subdivision.

Rule 35.6.1 DESIGNATED REMOTE CONTROL ZONES
Alfalfa Yard Zones:
 (Zone-1) East end Lead Track-191 starting 50 feet east of the 4-track, continuing east to the end of the Lead prior to Rosedale Street (MP 820.23).
 (Zone-2) West end Fence Track-193, starting 50 feet west of track-23 switch continuing west to the fouling point at Texaco (MP 822.9).
 (Zone-3) West end switching lead Track-194, starting 50 feet west of the 01-track switch continuing west to the fouling point at Texaco (MP822.9).

Dallas Yard Zone:
 (Zone-4) East end D-Yard Track-001, starting 20 feet east of the Track-001 switch continuing east to the signal at the east leg of the TP Wye, track-123.

River Yard Zone:
 (Zone-5) West end of the yard starting 20 feet east of the Track-001 switch westward to track-608, continuing west to the fouling point of the FXE-BNSF Interchange track.

Rule 35.6.1 ACTIVATING A REMOTE CONTROL ZONE
Application:
 Follow this radio procedure when activating or deactivating a zone:
 1. Activating a Zone-
 "UP (ENGINE #) RCO (NAME) TO (APPROPRIATE YARD SUPERVISOR) OVER"
 "UP (APPROPRIATE YARD SUPERVISOR) OVER"
 "THIS IS UP (ENGINE #) ACTIVATING ZONE (#) AT (NAME) YARD OVER"
 "THIS IS (APPROPRIATE YARD SUPERVISOR) SHOWING ZONE (#) AT (NAME) YARD IS ACTIVATED AT (TIME) OVER".
 RCO WITH UP (ENGINE #) UNDERSTANDS THAT ZONE (#) AT (NAME) YARD IS ACTIVATED AT (TIME) OUT".

2. Deactivating a Zone-
 "UP (ENGINE #) RCO (NAME) TO (APPROPRIATE YARD SUPERVISOR) OVER"
 "UP (APPROPRIATE YARD SUPERVISOR) OVER"
 "THIS IS UP (ENGINE #) DEACTIVATING ZONE (#) AT (NAME) YARD OVER"
 "THIS IS (APPROPRIATE YARD SUPERVISOR) SHOWING ZONE (#) AT (NAME) YARD IS DEACTIVATED AT (TIME) OVER".
 RCO WITH UP (ENGINE #) UNDERSTANDS THAT ZONE (#) AT (NAME) YARD IS DEACTIVATED AT (TIME) OUT".

SI-07 ITEM 13 TRAIN DEFECT DETECTORS

% 612.9	(#) 671.0	(#) 765.5
# 615.5	% 676.4	# 776.2
% 617.0	% 682.6	(#) 788.8
% 623.0	(#) 688.2	# 800.2
(#) 626.0	% 694.2	# 811.0
% 635.0	% 700.2	
(#) 640.1	(#) 706.8	
% 646.1	% 711.5	
% 648.5	(#) 721.5	
(#) 656.0	% 729.4	
% 663.0	(#) 734.5	
% 665.0	(#) 748.4	

SI-08 RULES ITEMS
Rule 5.5 Exception: Permanent speed signs not required for speeds listed in SI-02 under heading "EXP FRT".
Rule 15.1. El Paso: When track warrant contains the station name El Paso as either the 'From' or 'To' station on the address, the track warrant will include a list of all track bulletins in effect between MP1290.0 and Belen and between Tower 47 West and Planeport.
Rule 30.10. El Paso: Freight trains that either:
 * Do not have an operable 2-way end of train (EOT) telemetry device (rear-end and head-end units);
 OR
 * Are unable to establish continuity between the rear-end unit and the head-end unit; may depart El Paso and proceed as far as Planeport, Alfalfa or Icehouse Crossover in an effort to establish continuity. Trains may not proceed beyond these locations without being equipped with operable 2-way end of train (EOT) telemetry device.

SI-09 FRA EXCEPTED TRACKS
Asheley Lead: Zone-10, all tracks.

SI-10 BUSINESS TRACKS

Track Name	MP	STA. #S
Fabens E.....	800.4	TP831

SI-11 INDUSTRIAL LEADS
Ft. Bliss Industrial Lead: (681) 4.4 miles long. MP 0.0 (Alfalfa) to MP 4.4 (Planeport).
 Derail located on lead track at MP 0.7.

SI-12 TONNAGE RESTRICTIONS/TPOB
Maximum Gross Weight: 158 Tons.

Tons Per Operative Brake:	Tons Per Dynamic Brake Axle:	Maximum Speed:
100+ to 120		65 MPH
120+ to 132		60 MPH
Over 132		45 MPH

SI-13 TRAIN MAKE-UP RESTRICTIONS - None.

SI-14 MISC. INSTRUCTIONS
6-Axle units are prohibited from operating on House Track at Clint.
El Paso: When notified by Yardmaster of Border Patrol Inspection, trains must not exceed 5 MPH at location specified. Maximum authorized speed must not be resumed until inspecting officers notify train that inspection has been completed.
 Sign reading 'WHEN NOTIFIED STOP HERE' is located at MP826.4. When westward train is directed to stop at Copia Street, train must stop short of sign at MP826.4 and not proceed until permission to proceed is received.
Train operation on the Valentine Subdivision will be governed by Central Time.

LORDSBURG SUBDIVISION (0678)

Mile Post	Rule 6.3	CP #s	Radio Display:		Sta. #s	Siding Feet
			WEST STATIONS	EAST STATIONS		
			Piedras St. to CPS1285: 9696 -(*56) CPS1285 to Raso: 0808 -(*60) Raso to 36th St.: 9696 -(*10)			
1298.2	CTC 6MT	SA827	PIEDRAS STREET (0.3)	XBT	TP860	
1297.9		S1301	EAST LEG WYE (0.3)	TX		
1297.6		S1300	TOWER 47 WEST (0.2)	XBT	TP859	
1297.4		S1299	CP S1299 (0.4)		X	
1297.0		S1298	CP S1298 (Hold Signal) (0.5)			
1296.5		CTC 3MT	S1297	CAMPBELL STREET (0.5)		X
1296.0	S1296		CIVIC CENTER (0.6)		X	
1295.4	S1295		TOWER 196 (2.1)		X	
1293.3	CTC 2MT	S1294	ICEHOUSE CROSSOVER (8.0)			
1285.3		S1285	LIZARD (7.3)	(11)X	SP012	
1278.0	CTC	S1278	STRAUSS (8.3)	(11)	SP019	
1269.7		S1270	LANARK (9.8)		! SP029	8380
1268.1		S1268				
1259.9		S1260	AFTON (11.2)		! SP039	8352
1258.3		S1258				
1248.7		S1249	ADEN (9.7)		! SP050	8347
1247.0		S1247				
1239.0		S1239	DONA (9.2)		! SP060	8376
1237.4		S1237				
1229.8		S1230	AKELA (9.6)		! SP069	8359
1228.2		S1228				
1220.2		S1220	CARNE (10.4)		! SP078	8352
1218.6		S1219				
1209.8		S1210	DEMING (2.6)		! B SP090	8309
1208.2		S1208				
1207.2		S1207	CP S1207 (Hold Signal) (8.2)			
1199.0		S1199	TUNIS (10.4)		! SP100	8361
1197.3		S1197				
1188.6		S1189	GAGE (10.7)		! SP110	8371
1187.0		S1187				
1177.9	S1178	WILNA (9.9)		! SP121	8385	
1176.3	S1176					
1168.0	S1168	SEPAR (8.0)		! SP131	8362	
1166.3	S1166					
1160.0	S1160	LISBON (6.1)		! SP139	8457	
1158.6	S1159					
1153.9	S1154	ULMORIS (4.2)		! SP145	8378	
1152.2	S1152					
1149.7	S1150	LORDSBURG (7.4)		! B SP149	10850	
1147.6	S1148					
1142.3	S1142	GARY (7.7)		! SP157	8360	
1140.6	S1141					
1134.6	CTC 2MT	S1135	MONDEL (4.9)		SP164	
1129.7		S1130	STEINS (3.7)		X SP169	
1126.0		S1126	CAVOT (4.8)		X	
1121.0	S1121	VANAR (8.0)		X SP176		
1113.0	CTC	S1113	SAN SIMON (6.0)		SP183	
1107.0		S1107	OLGA (7.4)		! SP191	8236
1105.4		S1105				

1099.6		S1100	CP S1100 (Hold Signal) (1.3)			
1098.3		S1098	BOWIE (6.5)		IT	SP200 8209
1096.7		S1097				
1091.8	CTC 2MT	S1092	LUZENA (10.6)			SP207
1081.2		S1081	RASO (6.9)		(11)X	SP215
1074.3		S1074	WILLCOX (8.8)		!	SP223 8379
1072.3		S1073				
1065.5	CTC 2MT	S1066	COCHISE (4.2)			SP234
1061.3		S1061	APACHE (11.0)		T(11)X	
1050.3		S1050	TULLY (6.0)		X	SP254
1043.5		S1044	SIBYL (8.4)		X	SP260
1035.0		S1035	FENNER (5.6)		X	SP265
1029.3		S1029	CHAMISO (6.0)		X	SP273
1023.3		S1023	MESCAL (21.9)		X	SP276
1000.0		S1000	VAIL CROSSOVERS (12.2)		X	
987.7		SP988	36TH STREET		X	

(308.9)

SI-01 MAIN TRACK AUTHORITY

CTC Entire Subdivision.

Deming: Movement over SWRR trackage between East MP 1130.6 (SWRR) and West MP 5.7 (SWRR) governed by the General Code of Operating Rules, El Paso Area Timetable and UP System Special Instructions. Rule 6.13 (Yard Limits) is in effect on SWRR main track within these limits. Maximum speed on SWRR trackage, including main track, is 10 MPH.

Operation over trackage of the San **Benson &** Southwestern Railroad is governed by the General Code of Operating Rules, UP El Paso Area Timetable and UP System Special Instructions. UP trains and engines must not operate beyond SPSR MP1.0. Within this territory Rule 6.13 Yard Limits is in effect. Maximum speed is 10 MPH.

SI-02 MAXIMUM SPEED TABLE

Maximum Speed	MPH		
	PSGR	FRT	EXP FRT
Between Mileposts 987.7 and 1298.2 Eastward			
(Except as Below)	79	70	75
987.7 and 988.4	40	40	40
988.4 and 990.3	55	55	55
1005.5 and 1007.4 Trk 1	70	60	65
1007.4 and 1009.3 Trk 1	60	55	60
1009.3 and 1013.7 Trk 1	65	60	60
1013.7 and 1020.9 Trk 1	65	60	65
1020.9 and 1023.1 Trk 1	40	40	40
1003.8 and 1005.7 Trk 2	30	25	25
1005.7 and 1010.4 Trk 2	28	25	25
1010.4 and 1012.6 Trk 2	35	25	35
1012.6 and 1018.1 Trk 2	28	25	25
1018.1 and 1023.1 Trk 2	40	40	40
1023.1 and 1036.8	60	55	55
1036.8 and 1041.9	45	40	40
1041.9 and 1051.7	40	40	40
1051.7 and 1052.4	45	40	45
1052.4 and 1058.0	55	50	55
1058.0 and 1060.0	79	65	70

LORDSBURG SUBDIVISION (0678)

Between Mileposts 987.7 and 1298.2 Eastward	PSGR	FRT	EXP FRT
(Except as Below).....	79	70	75
1060.0 **.....	79	55+	60+
1060.0 and 1065.7.....	79	65	70
1065.7 and 1069.0.....	65	60	65
1069.0 and 1072.7.....	79	65	70
1072.7 **.....	79	55+	60+
1072.7 and 1082.8.....	79	65	70
1082.8 and 1091.0.....	65	60	65
1091.0 and 1121.4.....	79	65	70
1121.4 and 1124.4.....	55	50	50
1124.4 and 1128.7.....	45	40	45
1128.7 and 1130.2.....	55	50	55
1130.2 and 1142.3.....	79	65	70
1142.3 **.....	79	55+	60+
1142.3 and 1147.2.....	79	65	70
1147.2 and 1150.7.....	65	60	65
1150.7 and 1152.3.....	79	65	70
1152.3 **.....	79	50+	55+
1152.3 and 1176.4.....	79	65	70
1176.4 **.....	79	55+	60+
1176.4 and 1192.0.....	79	65	70
1192.0 **.....	79	50+	55+
1192.0 and 1200.4.....	79	65	70
1200.4 **.....	79	55+	60+
1200.4 and 1202.4.....	79	65	70
1202.4 **.....	79	55+	60+
1202.4 and 1204.2.....	79	65	70
1204.2 **.....	79	55+	60+
1204.2 and 1211.2.....	79	65	70
1211.2 **.....	79	55+	60+
1211.2 and 1213.2.....	79	65	70
1213.2 **.....	79	55+	60+
1213.2 and 1221.6.....	79	65	70
1221.6 **.....	79	55+	60+
1221.6 and 1223.4.....	79	65	70
1223.4 **.....	79	55+	60+
1223.4 and 1225.0.....	79	65	70
1225.0 **.....	79	55+	60+
1225.0 and 1229.8.....	79	65	70
1229.8 **.....	79	55+	60+
1229.8 and 1237.4.....	79	65	70
1237.4 **.....	79	55+	60+
1237.4 and 1244.2.....	79	65	70
1244.2 and 1247.0.....	75	65	70
1247.0 **.....	75+	55+	60+
1247.0 and 1247.6.....	75	65	70
1247.6 and 1271.2.....	79	65	70
1271.2 **.....	79	55+	60+
1271.2 and 1275.0.....	79	65	70
1275.0 **.....	79	55+	60+
1275.0 and 1278.2.....	79	65	70
1278.2 and 1278.8 Trk 1.....	79	65	70
1278.8 and 1281.3 Trk 1.....	79	60	70
1281.3 and 1295.5 Trk 1.....	40	40	40
1278.2 and 1281.3 Trk 2.....	65	60	65
1281.3 and 1292.5 Trk 2.....	40	40	40
1292.5 and 1295.5 Trk 2.....	30	30	30
1295.5 and 1296.6 Trks 1 & 2.....	25	20	25
1296.6 and 1298.2 Trks 101 & 102..	30	30	30
1293.5 and 1295.6 Trk 3.....	25	25	25
1295.6 and 1296.6 Trk 3.....	20	20	20
1296.6 and 1297.8 Trks 103 & 104..	30	30	30
1296.6 and 1297.8 Trks 105 & 106..	30	30	30

Between Mileposts 1298.2 and 987.7 Westward	PSGR	FRT	EXP FRT
(Except as Below).....	79	70	75
1298.2 and 1296.6 Trks 101&102....	30	30	30
1297.8 and 1296.6 Trks 103 & 104..	30	30	30
1297.8 and 1296.6 Trks 105 & 106..	30	30	30
1296.3 Trks103,104,105&106.....	10+	10+	10+
1296.6 and 1295.5 Trks 1 & 2.....	25	20	25
1295.5 and 1281.3 Trk 1.....	40	40	40
1295.5 and 1292.5 Trk 2.....	30	30	30
1292.5 and 1281.3 Trk 2.....	40	40	40
1281.3 and 1278.2 Trk 2.....	65	60	65
1296.6 and 1295.6 Trk 3.....	20	20	20
1295.6 and 1293.5 Trk 3.....	25	25	25
1247.6 and 1244.2.....	75	70	75
1150.7 and 1147.2.....	65	60	65
1130.2 and 1128.7.....	55	50	55
1128.7 and 1124.4.....	45	40	45
1124.4 and 1121.5.....	55	50	50
1121.7 **.....	79	45+	50+
1091.0 and 1082.8.....	65	60	65
1069.0 and 1065.7.....	65	60	65
1058.0 and 1052.4.....	55	50	55
1052.4 and 1051.7.....	45	40	45
1051.7 and 1041.9.....	40	40	40
1041.9 and 1036.8.....	45	40	40
1036.8 and 1023.1.....	60	55	55
1023.1 and 1018.1 Trk 2.....	40	40	40
1018.1 and 1012.6 Trk 2.....	28	25	25
1012.6 and 1010.4 Trk 2.....	35	25	35
1010.4 and 1005.7 Trk 2.....	28	25	25
1005.7 and 1003.8 trk 2.....	30	25	25
1023.1 and 1020.9 Trk 1.....	40	40	40
1020.9 and 1009.3 Trk 1.....	65	60	65
1009.3 and 1007.4 Trk 1.....	60	55	60
1007.4 and 1005.5 Trk 1.....	70	60	65
994.1 ** Trk 1.....	79	55+	60+
992.5 ** Trk 1.....	79	50+	55+
990.3 and 988.4.....	55	55	55
988.4 and 987.7.....	40	40	40

** Only freight trains exceeding 80 TPOB must comply with speed restriction. Speed restriction will not apply when signal at speed restriction location displays CLEAR.

LORDSBURG SUBDIVISION (0678)

SI-03 OTHER SPEED RESTRICTIONS

Maximum Speed	MPH
1. Thru Sidings & Turnouts	
Lordsburg, Bowie, Willcox.....	25
2. Dual Control Switch Turnouts	
Turnout: Strauss.....	60
Crossovers:	40
Lizard, Vail, 36th St...	
All crossovers in Trainway, S1296, S1297	10
S1061, S1081.....	40
S1295, S1301.....	10
3. Misc. Speed Restrictions	
D Yard lead at Main Trk.102 & east end of Main Tracks 105 & 106 MP1298.2.....	30
Hand-operated crossover west end of Main Tracks 103 & 104 MP1296.6.....	10
Bowie: All Arizona Eastern RR tracks...	5
Cochise: MP1061.7 Arizona Electric Power Inc., within plant inside gate with bell ringing.....	5
On/Off diesel facility turntable El Paso	3
All Industrial tracks at Willcox.....	5
Lordsburg Yard Track #2 between: MP1148.3 and MP1149.5.....	5

SI-04 MAIN TRACK DESIGNATIONS

Six main tracks between:

MP1297.8 and MP1296.6.

Three main tracks between:

MP1296.6 and MP1293.6.

Between MP1298.2 and MP1293.6 main tracks are designated as follows:

- Trk 1: north track between MP1293.6 and MP1296.6;
 Trk 101: north track between MP1296.6 and MP1298.2;
 Trk 2: second track to south between MP1293.6 and MP1296.6;
 Trk 102: second track to south between MP1296.6 and MP1298.2;
 Trk 3: south track between MP1293.6 and MP1296.6;
 Trk 103: third track to south between MP1296.6 and MP1297.8;
 Trk 104: fourth track to south between MP1296.6 and MP1297.8;
 Trk 105: fifth track to south between MP1296.6 and MP1297.8;
 Trk 106: sixth track to south between MP1296.6 and MP1297.8.

Two main tracks between:

MP1293.7 and MP1278.4;
 MP1134.6 and MP1113.0;
 MP1091.8 and MP1081.2;
 MP1065.5 and MP987.7.

Trk 1 is designated as:

North track between Mescal and MP1008.5;
 South track between MP1008.5 and MP987.7.

Trk 2 is designated as:

South track between Mescal and MP1007.9;
 North track between MP1007.9 and MP987.7.

SI-05 MILEPOST EQUATIONS

MP1298.2 = MP827.0 on Valentine Subdiv.
 MP1293.68 = MP1293.24 (Trk. 2)
 MP1125.3 = MP1125.1
 MP1045.2 = MP1044.7
 MP1040.6 = MP1040.3
 MP1037.5 = MP1037.4
 MP1031.4 = MP1031.3
 MP1023.1 = MP1021.7 (Trk. 1)
 MP1002.01 = MP1001.43 (Trk.2)

*Note: MP1001 to MP1002 is 8,342 feet.

SI-06 RCL OPERATIONS

RULE 35.5.1 DESIGNATED REMOTE CONTROL AREAS:

Following are Remote Control Areas in the El Paso Terminal Area;

1. Alfalfa Yard Area - between MP820.03 and MP822.9 on the Valentine Subdivision.
2. Dallas Yard Area - between MP1296.5 and MP1295.7 on the Lordsburg Subdivision.
3. River Yard Area - between MP1.0 and MP2.8 on the International Industrial Lead, Lordsburg Subdivision.

Rule 35.6.1 DESIGNATED REMOTE CONTROL ZONES

Alfalfa Yard Zones:

- (Zone-1) East end Lead Track-191 starting 50 feet east of the 4-track, continuing east to the end of the Lead prior to Rosedale Street (MP 820.23).
 (Zone-2) West end Fence Track-193, starting 50 feet west of track-23 switch continuing west to the fouling point at Texaco (MP 822.9).
 (Zone-3) West end switching lead Track-194, starting 50 feet west of the 01-track switch continuing west to the fouling point at Texaco (MP822.9).

Dallas Yard Zone:

(Zone-4) East end D-Yard Track-001, starting 20 feet east of the Track-001 switch continuing east to the signal at the east leg of the TP Wye, track-123.

River Yard Zone:

(Zone-5) West end of the yard starting 20 feet east of the Track-001 switch westward to track-608, continuing west to the fouling point of the FXE-BNSF Interchange track.

RULE 35.6.1 ACTIVATING A REMOTE CONTROL ZONE

Application:

Follow this radio procedure when activating or deactivating a zone:

1. Activating a Zone-

"UP (ENGINE #) RCO (NAME) TO (APPROPRIATE YARD SUPERVISOR) OVER"

"UP (APPROPRIATE YARD SUPERVISOR) OVER"

"THIS IS UP (ENGINE #) ACTIVATING ZONE (#) AT (NAME) YARD OVER"

"THIS IS (APPROPRIATE YARD SUPERVISOR) SHOWING ZONE (#) AT (NAME) YARD IS ACTIVATED AT (TIME) OVER".

RCO WITH UP (ENGINE #) UNDERSTANDS THAT ZONE (#) AT (NAME) YARD IS ACTIVATED AT (TIME) OUT".

2. Deactivating a Zone-

"UP (ENGINE #) RCO (NAME) TO (APPROPRIATE YARD SUPERVISOR) OVER"

"UP (APPROPRIATE YARD SUPERVISOR) OVER"

"THIS IS UP (ENGINE #) DEACTIVATING ZONE (#) AT (NAME) YARD OVER"

"THIS IS (APPROPRIATE YARD SUPERVISOR) SHOWING ZONE (#) AT (NAME) YARD IS DEACTIVATED AT (TIME) OVER".

RCO WITH UP (ENGINE #) UNDERSTANDS THAT ZONE (#) AT (NAME) YARD IS DEACTIVATED AT (TIME) OUT".

LORDSBURG SUBDIVISION (0678)

SI-07 ITEM 13 TRAIN DEFECT DETECTORS

% 1287.7	(#) 1152.0	(#) 1038.1
(#) 1282.2	% 1144.9	& 1036.7
% 1273.0	(#) 1136.9	& 1030.7
(#) 1266.9	% 1131.9	(#) 1025.1
(#) 1252.0	(#) 1119.0	% 1017.5
% 1243.0	% 1110.5	(#) 1016.4
(#) 1235.0	(#) 1102.6	(#) 1011.1
% 1224.2	% 1094.0	(#) 997.9
(#) 1215.4	(#) 1088.2	% 991.5
(#) 1202.7	(#) 1077.0	
% 1192.2	(#) 1071.8	
(#) 1181.2	% 1059.3	
% 1174.3	(#) 1051.8	
(#) 1165.0	% 1046.2	
% 1156.2	% 1041.2	

SI-08 RULES ITEMS

Rule 5.5 Exception: Permanent speed signs not required for speed listed in SI-02 under heading "EXP FRT".

Rule 5.5: Location of permanent speed signs between Strauss and El Paso will be 2,500 feet ahead of the restriction.

Rule 5.13 Piedras St. and Icehouse Crossover: On all main tracks one of the following two methods of protection or a combination of these must be provided:

1. A blue signal must be displayed at the end of the rolling equipment; OR
2. Where remote control switches provide direct access, the employee in charge of the workmen must tell the train dispatcher D39 (Radio Display 9696*56) what work will be done.

Train Dispatcher D39 must then:

- a. Inform the employee in charge of the workmen that the switches have been lined against movement onto the track and devices controlling the switches have been secured.
- b. Not remove the locking devices unless the employee in charge of the workmen says it is safe to do so.
- c. Maintain for 15 days a written record of each notification that includes:

- * Name and craft of the employee in charge of the workmen requesting protection;
- * Identification of track involved;
- * Date and time the employee in charge of workmen is notified that protection was provided;
- * Date, time, name and craft of the employee in charge of workmen who authorized removal of the protection.

Joint UP-BNSF Levee Track: crossing BNSF connection to International Bridge located 387' North of the center of the BNSF International Bridge. STOP signs are located on both sides of the BNSF connection to the International Bridge. Movements over this crossing may be made after stopping and crew member has preceded the movement.

Rule 6.8: does not apply at the following locations:

- * Main tracks 5 & 6 at Piedras St. fueling facility for eastward trains.
- * Main tracks 3, 4, 5 & 6 at Campbell St.

Rule 7.1 Application: Bowie (East and West Legs of Wye) - Do not handle any loaded or empty cars exceeding 65 feet on either of these wye tracks.

Rule 7.6: Cars set out on any track at Benson must have a minimum of fifty percent (50%) of operable hand brakes applied with a minimum of two operable hand brakes if two cars are set out.

SI-08 RULES ITEMS Continued...

Rule 8.3, Benson: The normal position for the wye switch is for movement from the SPSW RR to the east leg of wye. Switch must be left lined and locked in normal position when not in use. Cars must not be left on west leg of wye.

Rule 8.20: Flop-over derails on all tracks within SPSW RR Yard must be left lined and locked in the derailing position when used by Union Pacific crews. Missing or defective locks must be reported to the train dispatcher immediately.

Rule 15.1, El Paso: When track warrant contains the station name El Paso as either the 'From' or 'To' station on the address, the track warrant will include a list of all track bulletins in effect between MP1290.0 and Belen and between Tower 47 West and Planeport.

Rule 30.10 Tucson Yard: Eastward trains that are unable to establish continuity between the rear-end unit and the head-end unit at Tucson Yard may depart Tucson Yard and proceed as far as Wilmot in an effort to establish continuity. Eastward trains may not proceed beyond Wilmot without being equipped with operable 2-way end of train (EOT) telemetry device.

Rule 30.10, El Paso: Freight trains that either:
* Do not have an operable 2-way end of train (EOT) telemetry device (rear-end unit and head-end unit);

OR

* Are unable to establish continuity between the rear-end unit and the head-end unit; may depart El Paso and proceed as far as Planeport, Alfalfa or Icehouse Crossover in an effort to establish continuity. Trains may not proceed beyond these locations without being equipped with operable 2-way end of train (EOT) telemetry device.

SI-09 FRA EXCEPTED TRACKS

Following are FRA Excepted Tracks:

El Paso: Yard 5 - trks 500, 501, 503 - 505, 544 - 551;
Yard 6 - trks 754 - 799 (Old Zone 10).

SI-10 BUSINESS TRACKS

Track Name	MP	STA. #S
Phelps Dodge, Separ	1172.0	SP131
Dragoon (Trk.1)W.....	1053.4	SP244
Benson (Trk.2).....	1032.6	SP268
Marsh (Trk.1)W.....	1012.4	SP288
Vail (Trk.2)E.....	1003.5	SP298
Wilmot	994.8	SP306

SI-11 INDUSTRIAL LEADS

International Industrial Lead(0649)

2.8 miles. MP 0.0 to MP 2.8.

CTC in effect between MP 0.0 and MP 1.0.

Control Points located in CTC:

MILE POST	CP#
0.4	SA827
0.6	SA828
1.0	SA829

Rule 5.10 Exception: Marker not required for movements on this industrial lead.

LORDSBURG SUBDIVISION (0678)

SI-12 TONNAGE RESTRICTIONS/TPOB

Maximum Gross Weight: 158 Tons

Tons Per Operative Brake:	Tons Per Dynamic Brake Axle:	Maximum Speed:
----------------------------------	-------------------------------------	-----------------------

80+ to 100		60 MPH Eastward
		65 MPH Westward
100+ to 132		60 MPH Eastward
		60 MPH Westward
Over 132		45 MPH

"EXP FRT" Speed Restriction: Eastward trains averaging more than 70 TPOB (tons per operative brake) that are authorized to operate at speeds listed in the "EXP FRT" speed column in SI-02 must not exceed 70 MPH.

SI-13 TRAIN MAKE-UP RESTRICTIONS

Coupler Limits: The trailing tonnage behind a car must not exceed the coupler limit as specified as follows when ascending a grade. Subtract total locomotive tonnage rating for any helper engine that is positioned within the trailing tonnage behind the car. This final figure is the actual trailing tonnage.

Each car is to be considered equipped with a standard type coupler unless it is known the car is equipped with high strength couplers. If it is not known that a car is equipped with high strength couplers, it can be determined by looking at the coupler casting identification located on top of the coupler. A high strength coupler will have the letter "E" as the LAST character of identification. Examples of high strength coupler identifications are E60HTE, SBE60CE, E60DE.

Coupler Limits

Territory	Standard Coupler	High Strength Coupler
Lordsburg to Mondel	11,000	16,000
Mondel to Wilmot	10,000	11,500
Wilmot to 36th Street	14,000	14,000
36th Street to Lordsburg	8,000	11,000

SI-14 MISC. INSTRUCTIONS

Irvington Station Coal Plant MP992.4, has impaired side clearances at the coal dumper on track 5198. Mirrors, sun visors, and arm rests will not clear side of dumper unless pulled to engine body as close as possible. It will be the responsibility of the engineer and train crew to see that these devices have been moved toward the engine body before entering dumper with engines. Side clearances will not allow employees to ride on side of cars or engines; therefore, employees on engines must be in cab of engines with window shut when operating in the coal dumper.

Willcox: Operation on the Red Barn Lead is limited to one four-axle locomotive with cars.

6-axle locomotives are prohibited from operating on legs of wye at Bowie and Lordsburg.

El Paso: When notified by Yardmaster of Border Patrol Inspection, trains must not exceed 5 MPH at location specified. Track speed must not be resumed until inspecting officers notify train that inspection has been completed.

Benson: All rolling equipment left unattended on the west leg of wye must be secured south of the 602/603 switch. The 602/603 switch is to be left lined for 603 (east leg of the wye).

Train operation on the Lordsburg Subdivision will be governed by Mountain Time.

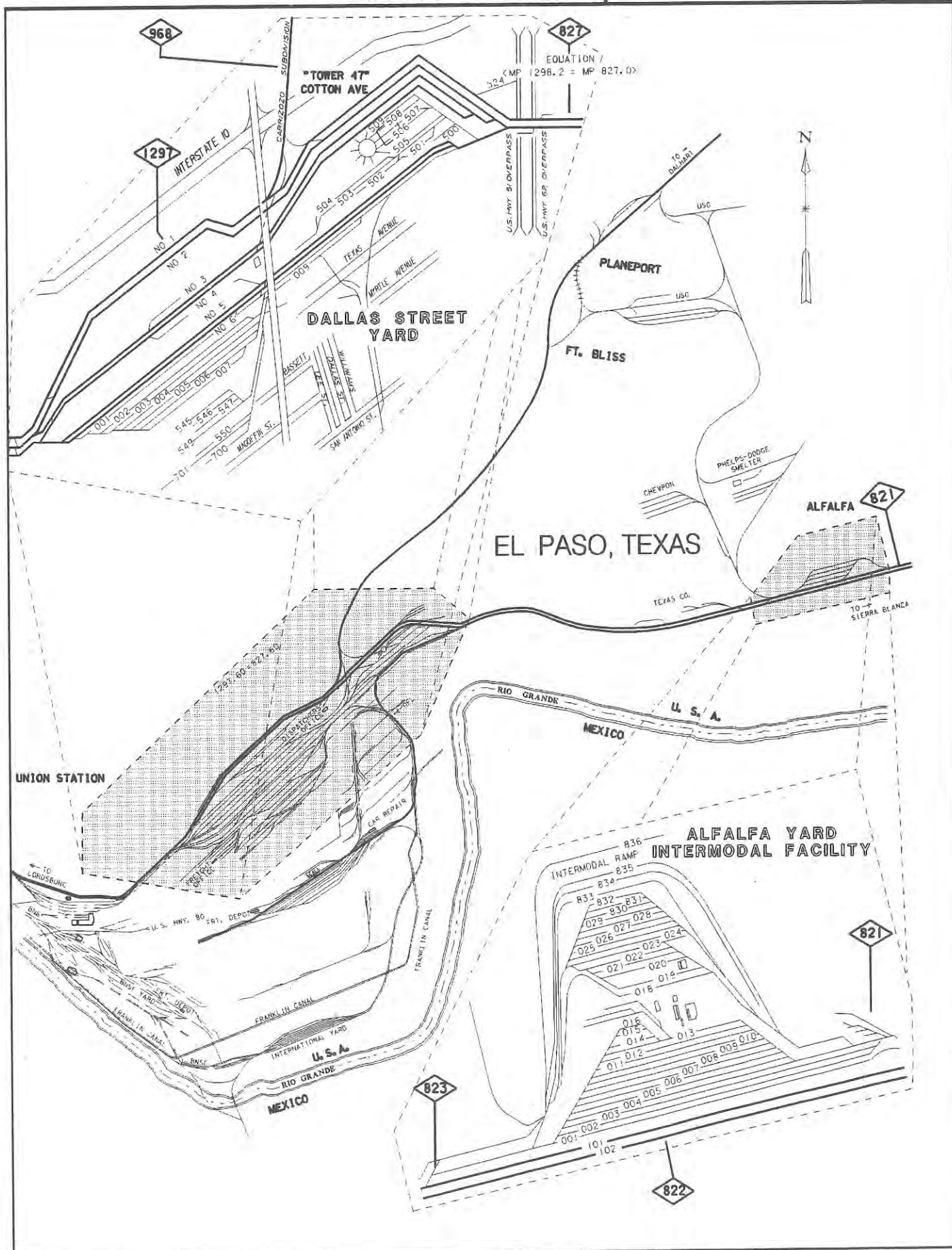
Coal Train Instructions:

Train crews on the Deming to Cochise coal trains (CDGCQ/CCQDG) must inform NCSC of the arrival and departure from the Arizona Electric Generating Plant at Cochise. Telephone numbers to call are: Public: 1-800-221-4163; Co. Line: 8-216-2128 (Ask for the "West Coal desk"). In addition, train crews arriving Deming on the empty train must clear the west end of the Southwest Railroad Yard at Deming and, if necessary cut the road crossing (Ruby Street) on the east end. Also, the TEP and Cochise coal trains will operate as distributed power when empty if a qualified engineer or peer trainer is available. When the engineers' extra board is depleted at Tucson, the first out engineer on the Tucson-El Paso Pool will be used to patch the coal trains. If not qualified, a peer trainer is to be called.

LORDSBURG YARD SWITCHING INSTRUCTIONS: Switching moves are restricted to not more than twelve (12) axles of power (Refer to SYS SI 4-5A) and not more than forty (40) cars. However, this restriction does not apply to trains making a pickup or setout from any track other than track #047.

Track #047 must not be used as a switching lead, use Clifton MT #105. Speed on track #047 must not exceed five (5) MPH and is restricted to four (4) axle locomotives. Couplings must not be made on track #047 between the east switch and a point 400 feet west of the east switch.

El Paso Terminal Map



GILA SUBDIVISION (0675)

Mile Post	Rule 6.3	CP #'s	Radio Display: 36th Street to Gila -9696 Gila to Yuma -1414		Sta. #'s	Siding Feet
			WEST STATIONS	EAST		
987.7	CTC 2MT	SP988	36TH STREET (1.1)	X		
986.6			TUCSON YARD (2.4)	BT	SP314	
985.2		SP985	CHERRY AVENUE (2.5)	X	SP317	
982.7		SP983	SOUTH YARD (3.3)	X		
979.4	CTC	SP979	STOCKHAM (3.6)		SP322	7890
977.8		SP978	KINO (8.4)		SP326	8195
975.8		SP976	RILLITO (8.7)		SP334	8372
974.1		SP974	NAVISKA (6.7)		SP342	8445
967.4		SP967	RED ROCK (7.4)		SP345	8337
965.7		SP966	WYMOLA (6.2)		SP352	8381
958.7		SP959	PICACHO (9.6)	TX	SP359	S8754
957.0		SP957	TOLTEC (11.4)		SP368	8344
952.0		SP952	CASA GRANDE (8.1)		SP377	8336
950.3		SP950	BON (10.6)		SP388	8330
944.6		SP945	MARICOPA (6.9)		SP398	8309
942.9		SP943	ENID (6.9)		SP406	8359
938.4		SP938	MOBILE (7.7)		SP412	8330
936.7		SP937	ESTRELLA (5.8)		SP421	8305
928.8		SP929	SHAWMUT (6.7)		SP426	8883
927.1		SP927	BOSQUE (6.3)		SP433	8049
917.4		SP917	GILA BEND (6.6)		SP440	17014
915.7		SP916	CP SP851 (Hold Signal) (2.4)			
908.3		SP908	CP SP848 (Hold Signal) (1.5)			
906.6		SP907	THEBA (6.0)		SP450	8356
897.7		SP898	PIEDRA (9.7)		SP456	8392
896.0		SP896	SENTINEL (12.4)	(11)	SP466	
890.8		SP891	STANWIX (6.4)	(11)	SP476	
889.1		SP889	AZTEC (10.5)		SP484	8388
883.9		SP884	STOVAL (8.2)		SP495	8386
882.1		SP882	MOHAWK (8.9)		SP503	8401
876.2		SP876	COLFRED (7.4)		SP512	8415
874.5		SP874	NOAH (6.6)		SP519	8371
870.4		SP870				
868.7		SP869				
863.7		SP864				
862.1		SP862				
857.4		SP857				
854.1	SP854					
850.8	SP851					
848.4	SP848					
846.9	SP847					
845.2	SP845					
840.9	SP841					
839.2	SP839					
831.2	CTC 2MT	SP831				
818.8	CTC	SP819				
812.4		SP812				
810.7		SP811				
801.9		SP802				
800.2		SP800				
793.7		SP794				
792.0		SP792				
784.8		SP785				
783.1		SP783				
777.4		SP777				
775.7		SP776				

770.8	CTC 2MT	SP771	WELLTON (2.7)		SP526	
768.1		SP768	WEST WELLTON (14.9)	X		
753.2	CTC	SP753	DOME (2.0)		SP542	
751.2		SP751	KINTER (2.0)		SP545	8487
749.4		SP749	(6.6)			
744.6		SP745	FORTUNA (7.1)		SP552	8388
742.8		SP743				
737.5	ABS 2MT	SP738	EAST YARD (4.8)	Y	SP558	
732.7			YUMA	BTY	SP563	

(255.0)

SI-01 MAIN TRACK AUTHORITY

CTC between:

MP987.7 and MP737.4;
MP985.2 and MP985.5 East lead.
CP SP986 is located at MP985.4 East lead;
MP987.6 and MP987.7 East lead.

Rule 9.14 between:

MP732.5 and MP737.4 Trk 1.

Rule 9.15 Track Permits between:

MP732.5 and MP737.4 Trk 1.

ABS between:

MP734.3 and MP732.5 Trk 1 westward;
MP737.4 and MP734.3 Trk 1 both directions;
MP732.5 and MP737.4 Trk 2 both directions.

Yard Limits between:

MP732.5 and MP737.4 Trk 2.

SI-02 MAXIMUM SPEED TABLE

Maximum Speed	MPH		
	PSGR	FRT	EXP
Between Mileposts			
732.7 and 987.7 Eastward			FRT
(Except as Below)	79	65	75
732.7 and 733.0	25	25	25
733.0 and 737.5 Trk 2	50	50	50
733.0 and 734.3 Trk 1	25	25	25
734.3 and 737.5 Trk 1	40	40	40
743.2 and 748.6	70	65	70
748.6 and 756.2	40	40	40
756.2 and 763.0	60	55	55
763.0 and 770.7	70	65	70
770.7 and 771.0	40	40	40
775.5 **	79	55+	60+
780.3 and 781.4	70	65	70
792.5 and 794.9	55	50	50
819.0 **	79	55+	60+
822.4 and 825.3	55	50	50
855.1 and 855.8	70	65	70
866.9 and 872.1	55	50	55
872.1 and 874.5	65	60	65
874.5 **	65+	55+	60+
874.5 and 875.0	70	60	70
892.7 and 932.1	70	65	70
932.1 **	70+	55+	60+
932.1 and 935.5	70	65	70
938.4 **	79	55+	60+
944.5 **	79	55+	60+
957.0 **	79	55+	60+
975.5 and 975.8	75	65	70
977.8 **	75+	55+	60+
977.8 and 979.4	75	65	70
979.4 and 982.7	50	50	50
982.7 and 987.7	40	40	40

GILA SUBDIVISION (0675)

Between Mileposts 987.7 and 732.7 Westward (Except as Below)	PSGR	FRT	EXP FRT
987.7 and 982.7	40	40	40
982.7 and 979.4	50	50	50
979.4 and 975.5	75	70	75
955.5 **	79	55+	60+
935.5 and 892.7	75	70	75
875.0 and 874.5	65	60	65
874.5 **	65+	55+	60+
874.5 and 873.3	65	60	65
873.3 **	65+	50+	55+
873.3 and 872.3	65	60	65
872.3 **	65+	55+	60+
872.3 and 872.1	65	60	65
872.1 and 867.3	55	50	55
867.3 **	55+	45+	50+
867.3 and 866.9	55	50	55
865.1 **	79	55+	60+
856.4 and 855.1	75	70	75
825.3 and 822.4	55	50	50
794.9 and 792.5	55	50	50
781.4 and 780.3	75	70	75
771.0 and 770.7	40	40	40
770.7 and 763.9	70	70	70
763.9 **	70+	55+	60+
763.9 and 763.0	70	70	70
763.0 and 756.2	60	55	55
756.2 and 748.6	40	40	40
748.6 and 743.2	70	70	70
737.5 and 735.3	50	50	50
735.3 and 734.5	40	40	40
734.5 and 732.1	25	25	25

** Only freight trains exceeding 80 TPOB must comply with speed restriction. Speed restriction will not apply when signal at speed restriction location displays CLEAR.

SI-03 OTHER SPEED RESTRICTIONS

Maximum Speed	MPH
1. Thru Sidings & Turnouts	
Stockham, Kino, Estrella, Shawmut, Theba, Mohawk, Kinter	25
2. Dual Control Switch Turnouts	
Crossover 36th St.	40
Turnouts: Stockham, East Yard	50
Turnouts: Sentinel, Stanwix, Wellton, Dome	40
Turnout: Picacho SP937 to Phoenix Sub.	25
Crossover: South Yard	10
3. Misc. Speed Restrictions	
Picacho: west leg of wye	10
Casa Grande - VIP Lead	5
East Yard: all yard tracks	5
Yuma: all yard and drill tracks	5
Tucson Yard: Trks. 051-056, 507-512, 803 and 804	5
Tucson Yard: All westward trains entering east end of yard from Main Trk. 1 or Trk. 2	5

SI-04 MAIN TRACK DESIGNATIONS

Two Main Tracks Between:
 MP 987.7 and MP 979.4;
 MP 831.2 and MP 818.8;
 MP 770.8 and MP 753.2;
 MP 737.5 and MP 732.7.

SI-05 MILEPOST EQUATIONS

MP 735.3 = MP 735.4
 MP 794.2 = MP 794.3
 MP 867.4 = MP 867.6
 MP 870.0 = MP 870.2

SI-06 RCL OPERATIONS - None.

SI-07 ITEM 13 TRAIN DEFECT DETECTORS

(#) 979.1	(#) 878.7	% 780.4
% 976.4	% 873.0	(#) 772.7
% 971.6	(#) 865.0	(#) 758.2
(#) 961.7	% 859.8	% 752.5
% 954.5	(#) 851.3	(#) & 740.2
% 947.7	% 843.1	% 735.1 Trk.1
(#) 941.4	(#) 834.9	
% 930.8	(#) 820.4	
(#) 922.0	% 815.6	
% 912.5	(#) 806.6	
(#) 902.0	% 796.6	
% 893.6	(#) 790.0	
(#) 888.4	% 787.5	

Detector MP 740.2 protects bridge at MP 732.3.

GILA SUBDIVISION (0675)

SI-08 RULES ITEMS

Rule 5.5 Exception: Permanent speed signs not required for speeds listed in SI-02 under heading "EXP FRT".

Rule 6.32.2

AUTOMATIC WARNING DEVICES - Application:
When a train is issued a track bulletin stating:

"AUTOMATIC CROSSING DEVICE NOT WORKING PROPERLY AT (location) PROTECT CROSSING UNLESS OTHERWISE INSTRUCTED BY SIGNAL EMPLOYEE"

Part reading "PROTECT CROSSING" requires train to stop before occupying the crossing. After a crew member is on the ground at the crossing to warn highway traffic, proceed over the crossing on hand signals from that crew member.

Rule 7.7 Tucson Yard: Employees must know how to operate the type of hand brakes they are using. When hand brakes must be used to control or prevent car movement, test the brakes to ensure that they are operating properly before using them. Kicking cars into a clear track in Tucson Yard is prohibited. Cars placed in any clear track must be shoved to a stop and properly secured.

Rule 9.6. Cherry Ave: When signal displays a PROCEED indication over power derail on east or west lead, a movement will have seven minutes to occupy the established route. If no movement is made, signal will display STOP, and after three additional minutes derail will return to derailling position.

Rule 9.17. East Yard: Trains and engines may enter Trk 2 between MP732.5 and MP737.4 at a hand-operated switch only after receiving permission from Train Dispatcher. Before granting permission, the Train Dispatcher must know that signals governing movement to Trk 2 are set to display STOP. When granted permission, the requirement to line main track switch and wait 5 minutes will not apply.

Rule 31.1.2. Tucson Yard: When engine is left unattended in locomotive servicing area, hand brakes must be set on all units in consist.

Tucson Yard:

- 0-2500 tons - 10 hand brakes or half of the hand brakes in train (whichever is the least)
- 2501-4999 tons - 15 hand brakes
- 5000-7999 tons - 20 hand brakes
- 8000 tons + - 25 hand brakes

All hand brakes are to be set on descending end. Hand brakes will not be applied if outgoing crew takes charge of train on arrival, and inbound crew is advised by Yardmaster that engine is not to be detached and no switching is to be performed on the train. Hand brakes will not be applied if switch crew takes charge of the train on arrival. Hand brakes on outbound trains must not be released until engine is coupled to train, air test completed, and blue sign removed.

Yuma East Yard:

Freight trains- five hand brakes on west end.

Yuma: Freight trains- five hand brakes on west end.

All hand brakes must be released and air cut in before shoving cars to clear in trks 103-105 and 107-109. After movement is completed, hand brakes must be reapplied.

SI-09 FRA EXCEPTED TRACKS

Yuma: All yard tracks except tracks 023, 029, 110, 166 & 915.

SI-10 BUSINESS TRACKS

Track Name	MP	STA. #'S
Tucson	983.9	SP317
Avra W.....	953.5	SP347
Eloy	932.3	SP363
Seco W.....	921.0	SP375
Arizona Grain	903.9	SP398
Blaisdell E.....	746.6	SP549

SI-11 INDUSTRIAL LEADS

Somerton Industrial Lead(0676) 6.1 miles; MP0.0 to MP6.1; entire Lead is FRA Excepted Trk.; Maximum Gross Weight: 120 Tons.

Business Tracks	MP	Sta.#'s
Steam	6.1	SY006

SI-12 TONNAGE RESTRICTIONS/TPOB

Maximum Gross Weight: 158 Tons.

Tons Per Operative Brake:	Tons Per Dynamic Brake Axle:	Maximum Speed:
80+ to 100		60 MPH Eastward
		65 MPH Westward
100+ to 132		60 MPH Both directions
Over 132		45 MPH Both directions

"EXP FRT" Speed Restriction: Eastward trains averaging more than 70 TPOB (tons per operative brake) that are authorized to operate at speeds listed in the "EXP FRT" speed column in SI-02 must not exceed 70 MPH.

SI-13 TRAIN MAKE-UP RESTRICTIONS - None.

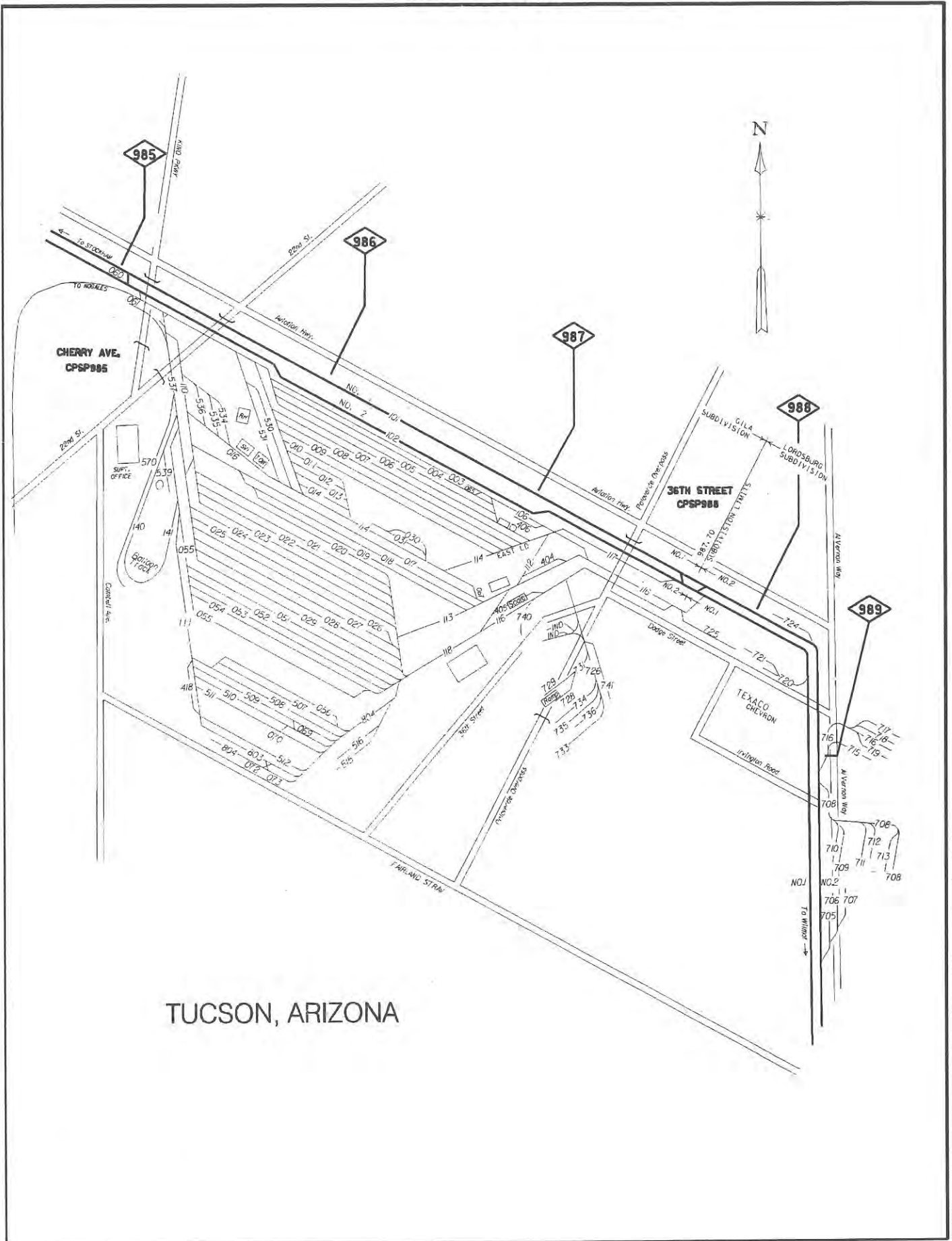
SI-14 MISC. INSTRUCTIONS

Tucson Yard: Westward freight trains must receive permission from Yardmaster or their representative before departing Tucson Yard. Eastward freight trains arriving Tucson Yard must not pass crossover CP SP983 without permission of Yardmaster or their representative.

Rillito: Cars must not be kicked or dropped into Calmat Portland Cement Spur, and cars must not be left standing on this spur west of insulated joints at east end of circuit actuating highway crossing signals. Chains across crusher spur at each end of pit are secured by snaps to posts, and may be unfastened to move cars to or from pit. Chains must be fastened across track when there is no car spotted over pit. Deraill located 80 feet east of crusher pit on crusher spur must not be lined for movement into spur until it is known that track over pit is ready for the movement.

Yuma: Westward freight trains must stop short of crew change sign located 150' east of Yuma yard office for crew change unless otherwise notified by Train Dispatcher.

6-axle locomotives are prohibited from operating on the following track: Casa Grande - VIP Lead.



TUCSON, ARIZONA

TOYAH SUBDIVISION (0515)

Mile Post	Rule 6.3	CP #s	Radio Display: Sweetwater to CP T652: 4646 -(*66) CP T652 to CP SA737: 1414 -(*57)		Sta. #s	Siding Feet
			WEST ▼ STATIONS ▲	EAST ▲ STATIONS ▼		
447.8	TWC		SWEETWATER DEPOT (8.6)	B	TP448	11569
456.4	ABS		ROSCOE (10.0)		TP456	7577
466.4			LORAINE (11.7)		TP467	7457
478.1			DOVE (13.0)		TP479	8257
491.1			IATAN (12.6)		TP492	6830
503.7			COAHOMA (18.7)		TP503	7405
522.4		T522	MORITA (9.7)	(M)	TP524	11220
524.7						
532.1		T532	STANTON (16.5)	(M)	TP534	9578
534.0						
548.6			CHUB (15.2)	(M)	TP549	9367
550.4		T550				
563.8			PEGASUS (14.4)		TP564	8410
578.2			ARCADE (14.0)	(M)	TP579	9395
580.1		T580				
592.2		T592	METZ (15.2)	(M)	TP594	9474
594.1						
607.4		T607	MONAHANS (16.5)	(M)T	TP609	9430
609.4						
623.9	CTC	T624	PYOTE (27.7)	I	TP624	9205
625.8		T626				
651.6		T652	PECOS SIDING (13.3)	I	TP652	9263
653.4		T653				
664.9		T665	TOYAH (11.5)	I	TP666	11865
667.3		T667				
676.4		T676	GOZAR (13.3)	I	TP676	9505
678.2		T678				
689.7		T690	LEVINSON (18.5)	I	TP691	9175
691.6		T692				
708.2	TWC	T708	BORACHO (17.5)	I(M)	TP709	8742
710.0	ABS	T710		I(M)		
725.7		T725	WILD HORSE (9.3)	I(M)	TP727	8700
727.5		T727		I(M)		
735.0			VAN HORN (18.9)		TP735	3606
753.9		T754	EAGLE FLAT (14.8)	I(M)	TP754	8994
755.8		T757		I(M)		
768.7		SA737	SIERRA BLANCA (11)		TP768	

(320.9)

SI-01 MAIN TRACK AUTHORITY

CTC Between:

MP 623.9 (T624) and MP 691.6 (T692).

TWC Between:

MP 447.8 and MP 623.9;
MP 691.6 and MP 768.7.

ABS Between:

MP 447.8 and MP 623.9;
MP 691.6 and MP 768.7.

SI-02 MAXIMUM SPEED TABLE

Maximum Speed

MPH

**Between Mileposts
447.8 and 623.9**

**FRT EXP
FRT**

(Except as Below).....	60	60
447.8 and 449.1.....	30	30
449.1 and 450.8.....	50	60
463.3 ** W.....	45+	45+
463.9 and 464.4.....	50	60
465.7 ** W.....	40+	45+
476.4 and 477.3.....	45	55
479.0 ** E.....	45+	45+
479.1 ** W.....	45+	45+
508.7 and 510.5.....	30	30
514.0 and 514.4.....	50	50
587.1 and 587.6.....	50	50

**Between Mileposts
623.9 and 768.7**

**FRT EXP
FRT**

(Except as Below).....	70	75
682.8 and 683.1.....	65	70
691.6 and 692.7.....	60	70
692.7 and 693.0.....	55	55
693.0 and 697.1.....	60	60
697.1 and 702.0.....	60	70
702.0 and 703.2.....	60	65
703.2 and 723.0.....	60	70
723.0 and 741.3.....	60	60
741.3 and 744.0.....	40	45
744.0 and 768.7.....	60	60

**Only freight trains exceeding 80 TPOB must comply with speed restrictions. Speed restrictions will not apply when signal at speed restriction location displays CLEAR.

SI-03 OTHER SPEED RESTRICTIONS

Maximum Speed

MPH

1. Thru Sidings & Turnouts
Van Horn..... 10
2. Dual Control Switch Turnouts (No Exceptions)
3. Misc. Speed Restrictions (No Exceptions)

SI-04 MAIN TRACK DESIGNATIONS - None.

SI-05 MILEPOST EQUATIONS - None.

SI-06 RCL OPERATIONS - None.

SI-07 ITEM 13 TRAIN DEFECT DETECTORS

(#) 453.0	(#) 560.7	(#) 661.0
(#) 473.2	(#) 582.0	(#) 680.0
(#) 485.4	(#) 598.4	(#) 706.3
(#) 506.8	(#) 613.6	(#) 724.0
(#) 526.6	(#) 630.1	(#) 737.8
(#) 544.0	(#) 644.5	(#) 765.4

TOYAH SUBDIVISION (0515)

SI-08 RULES ITEMS

Rule 5.5 Exception: Permanent speed signs not required for speeds listed in SI-02 under heading "EXP FRT".

Rule 6.28.: Sidings Wild Horse, Boracho and Eagle Flat are designated as being within Automatic Block Signal System; Rule 6.28 does not apply.

Rule 6.31 Exception:
Where no permanent or temporary speed restrictions are in effect, UPRR passenger trains may operate at ten (10) MPH above timetable maximum speed for freight trains not to exceed 79 MPH.

Rule 9.13.1.: When it is necessary to perform switching within a manual interlocking over a dual control switch in hand operation, in TWC territory the requirement to obtain Track and Time within the manual interlocking does not apply.

Rule 9.15.: Sidings Wild Horse, Boracho and Eagle Flat: Track permits apply. MW On-Track equipment must obtain a track permit to occupy these sidings. A track permit will be issued to train only when operating conditions require siding to be jointly occupied by a train and track car, machine or MW employee.

Rule 10.3: Track and time rules apply within manual interlocking limits at each end of the following sidings: Wild Horse, Boracho and Eagle Flat.

Rule 30.10.: Trains are permitted to depart their designated crew change location without an operable 2-way end-of-train device (rear-end unit and head-end unit) and proceed to the first siding where the 2-way end-of train device must be repaired or replaced.

SSI Item-13 Exceptions: The following applies only on the Toyah Subdivision:
System Special Instructions Item 13.6.2 Detector Failure - Action Table item No. 4, revise that portion reading:

"Within 30 miles of the failed detector" to read:

"Within 33 miles of the failed detector"

Rule 42.16 Foul Time: Foul Time applies within interlocking limits at the following control points: T522, T532, T550, T580, T592 AND T607.

SI-09 FRA EXCEPTED TRACKS - None.

SI-10 BUSINESS TRACKS

Track Name	MP	STA. #'S
Ziler	508.5	TP509
Big Spring	513.4	TP513
Tex-Harvey W.....	540.8	TP541
Midland	555.6	TP553
Bounce	559.0	TP559
Solo	568.7	TP569
Odessa	570.3	TP570
Douro	584.1	TP584
Texas Elec. W.....	613.6	TP614
Wickett W.....	616.2	TP615
Barstow E.....	639.7	TP640
Pecos	646.6	TP647
Kent E.....	698.5	TP698
Westex E.....	728.4	TP729
Allamore	746.5	TP746
Eagle Flat Spur	753.5	TP754

SI-11 INDUSTRIAL LEADS - None.

SI-12 TONNAGE RESTRICTIONS/TPOB

Maximum Gross Weight: 143 Tons.

TONNAGE RESTRICTIONS

Between Sweetwater (MP 447.8) and Big Spring (MP 511.1):
Do not exceed-
55 MPH if freight train exceeds 90 TPOB;
50 MPH if freight train exceeds 110 TPOB.

Between Big Spring (MP 511.1) and Pyote (MP 623.9):
Do not exceed-
50 MPH if freight train exceeds 90 TPOB;
45 MPH if freight train exceeds 110 TPOB.

Between Levinson (MP 689.7) and CP SA737 (MP 768.7):
Do not exceed-
55 MPH if freight train exceeds 90 TPOB;
50 MPH if freight train exceeds 110 TPOB.

SI-13 TRAIN MAKE-UP RESTRICTIONS - None.

SI-14 MISC. INSTRUCTIONS - None.

CARRIZOZO SUBDIVISION (0680)

Mile Post	Rule 6.3	CP #s	Radio Display: Vaughn to CP TC962:9696 -(*10) CP TC962 to Twr 47 West: 9696 - (*56)		Sta. #s	Siding Feet
			WEST ▼ STATIONS	EAST ▲		
739.6	CTC	TC739	VAUGHN		SW718	
741.2		TC741	(13.9)			9081
753.5		TC753	DURAN		SW733	9000
755.3		TC755	(16.9)			
770.4		TC770	EFAW		SW749	9732
772.3		TC772	(12.0)			
782.4		TC782	GALLINAS		SW761	9000
784.3		TC784	(8.6)			
791.0		TC791	TECOLOTE		SW770	10400
793.2		TC793	(11.3)			
802.3		TC802	ANCHO		SW780	9000
804.1		TC804	(11.1)			
813.4		TC813	COYOTE		SW791	9000
815.3		TC815	(12.4)			
825.8		TC826	CARRIZOZO		B SW804	1-10400
827.9		TC828	(13.1)			2-9800
838.9		TC839	OSCURO		SW818	9911
840.8		TC841	(13.5)			
852.4		TC852	THREE RIVERS		SW831	9000
854.3		TC854	(11.7)			
864.1	TC864	OTERO		SW842	9075	
866.0	TC866	(22.4)				
886.5	TC886	OMLEE		SW865	9100	
888.3	TC888	(13.0)				
899.5	TC899	DUNES		SW878	9000	
901.4	TC901	(20.4)				
919.9	TC920	OROGRANDE		SW899	9100	
921.8	TC922	(13.5)				
933.4	TC933	DESERT		SW911	9000	
935.2	TC935	(15.0)				
948.4	TC948	NEWMAN		SW927	9000	
950.3	TC950	(13.8)				
962.2	TC962	PLANEPORT		SW941	8726	
964.0	TC964	(6.4)				
968.4	TC968	TOWER 47 EAST				
		(0.2)				
968.6	S1300	TOWER 47 WEST		BT	TP859	

(229.0)

SI-01 MAIN TRACK AUTHORITY
CTC entire Subdivision.

SI-02 MAXIMUM SPEED TABLE		MPH	
Maximum Speed		FRT	EXP
Between Mileposts 737.4 and 968.6		FRT	EXP
(Except as Below).....		70	75
746.0 and 751.8.....		40	40
772.2 and 772.5.....		60	60
773.9 and 778.4.....		40	40
789.9 and 791.9.....		60	60
791.9 and 793.6.....		50	50
793.6 and 793.9.....		45	45
793.9 and 802.3.....		40	40
802.3 and 803.5.....		60	60
803.5 and 810.5.....		60	65
831.3 and 831.6.....		50	55
966.4 and 968.4.....		25	25
968.4 and 968.6 (West leg wye) W..		10	10
968.6 and 968.4 (West leg wye) E..		20	20
968.4 and 968.6 (East leg wye)....		10	10

SI-03 OTHER SPEED RESTRICTIONS		MPH
Maximum Speed		
1. Thru Sidings & Turnouts (No Exceptions)		
2. Dual Control Switch Turnouts		
Turnout CP S1300.....		20
3. Misc. Speed Restrictions		
Freight trains handling empty covered hoppers.....		50
Fence Track: westward.....		10
Fence Track: eastward.....		20
Eastward trains on west leg of wye.....		15+
East leg of wye.....		10

SI-04 MAIN TRACK DESIGNATIONS
Tower 47: Between Tower 47 West and Tower 47 East is designated as Main Track.

SI-05 MILEPOST EQUATIONS - None.

SI-06 RCL OPERATIONS - None.

SI-07 ITEM 13 TRAIN DEFECT DETECTORS		
(#) 751.2	(#) 837.5	(#) 924.8
(#) 762.4	(#) 858.8	(#) 938.9
(#) 773.8	(#) 871.9	(#) 944.2
(#) 789.3	(#) 885.5	(#) 960.3
(#) 808.4	(#) 898.3	
(#) 820.4	(#) 910.5	

SI-08 RULES ITEMS

Rule 5.5 Exception: Permanent speed signs not required for speeds listed under the heading "EXP FRT" in SI-02.

Rule 6.31 Exception:
Where no permanent or temporary speed restrictions are in effect, UPRR passenger trains may operate at ten (10) MPH above timetable maximum speed for freight trains not to exceed 79 MPH.

Rule 15.1. El Paso: When track warrant contains the station name El Paso as either the 'From' or 'To' station on the address, the track warrant will include a list of all track bulletins in effect between MP1290.0 and Belen and between Tower 47 West and Planeport.

Rule 30.10. El Paso: Freight trains that either:
* Do not have an operable 2-way end of train (EOT) telemetry device (rear-end unit and head-end unit);
OR

* Are unable to establish continuity between the rear-end unit and the head-end unit; may depart El Paso and proceed as far as Planeport, Alfalfa or Icehouse Crossover in an effort to establish continuity. Trains may not proceed beyond these locations without being equipped with operable 2-way end of train (EOT) telemetry device.

System Special Instructions Item-1:
Time comparison - Operation on this subdivision will be governed by Mountain Time.

SI-09 FRA EXCEPTED TRACKS - None.

SI-10 BUSINESS TRACKS

Track Name	MP	STA. #S
Corona W.....	775.9	SW753
Robsart E.....	818.5	SW797
Alamogordo E.....	882.5	SW861
Bunsen E.....	953.6	SW931
Fort Bliss E.....	963.5	SW982

SI-11 INDUSTRIAL LEADS - None.

SI-12 TONNAGE RESTRICTIONS/TPOB

Maximum Gross Weight: 143 tons

Tons Per Tons Per Dynamic Maximum Speed:
Operative Brake: Brake Axle:

80+ to 100		65
100+ to 132		60
Over 132		45

SI-13 TRAIN MAKE-UP RESTRICTIONS - None.

SI-14 MISC. INSTRUCTIONS

6-axle locomotives are prohibited from operating on all industry tracks between MP 961.8 and MP 882.2 except Trk.162 and Trk.716 at Alamogordo.

TUCUMCARI SUBDIVISION (0682)

Mile Post	Rule 6.3	CP #'s	Radio Display: Dalhart to Vaughn: 1414 - (*11)		Sta. #'s	Siding Feet
			WEST ▼ STATIONS	EAST ▲		
544.0	CTC	TC544	DALHART	BT	SW523	
545.6		TC546	(3.8)	(X)BNSF(M)		
547.8		TC548	CP TC548 (Hold Signals)			
				(12.7)		
560.5		TC581	KING		SW539	9270
562.5		TC563	(16.6)			
577.1		TC577	ROMERO		SW556	9070
579.2		TC579	(19.9)			
597.0		TC597	OBAR		SW576	9075
598.9		TC599	(24.2)			
621.2		TC621	MATER		SW599	9120
623.0		TC623	(15.5)			
636.7		TC637	TUCUMCARI		SW612	S8200
638.1		TC638				N6800
639.8		TC640	(13.4)			
650.1		TC650	PALOMAS		SW628	9066
651.9		TC652	(13.9)			
664.0		TC664	SIMMONS		SW643	9000
665.8		TC666	(14.1)			
678.1		TC678	ARVID		SW657	9000
680.0	TC680	(8.8)				
686.9	TC687	LOS TANDS		SW666	9200	
688.8	TC689	(15.3)				
702.1	TC702	DAVIS		SW680	8976	
704.0	TC704	(16.2)				
718.3	TC718	PASTURA		SW696	9000	
720.2	TC720	(19.0)				
737.4	TC737	VAUGHN		SW718	9268	
739.6	TC739					

(195.6)

SI-01 MAIN TRACK AUTHORITY

CTC entire Subdivision.

SI-02 MAXIMUM SPEED TABLE

Maximum Speed	MPH	
Between Mileposts	FRT	EXP
544.0 and 741.2	FRT	FRT
(Except as Below)	70	75
544.0 and 546.3	60	60
616.4 and 616.6	50	50
636.6 and 639.9	60	70
666.2 and 670.0	60	60
675.1 and 677.1	60	60
683.4 and 684.7	60	65
694.7 and 703.1	60	60
703.1 and 710.9	40	40
734.1 and 737.4	40	40

SI-03 OTHER SPEED RESTRICTIONS

Maximum Speed	MPH
1. Thru Sidings & Turnouts (No Exceptions).	
2. Dual Control Switch Turnouts (No Exceptions).	
3. Misc. Speed Restrictions	
Freight trains handling empty covered hoppers	50
Tucumcari: Between main track and siding and between siding and yard tracks. Trains handling dimensional or excessive dimension loads must not exceed	30

SI-04 MAIN TRACK DESIGNATIONS - None.

SI-05 MILEPOST EQUATIONS - None.

SI-06 RCL OPERATIONS - None.

SI-07 ITEM 13 TRAIN DEFECT DETECTORS

(#) 554.3	(#) 616.6	(#) 676.3
(#) 570.0	% 621.1	(#) 689.3
(#) 585.6	(#) 630.0	(#) 698.6
(#) 605.0	(#) 643.2	(#) 716.6
% 613.0	(#) 659.0	(#) 735.6

SI-08 RULES ITEMS

Rule 3.1: Train and all other operations between Dalhart and Vaughn will be governed by Central Time.

Rule 5.5 Exception: Permanent speed signs not required for speeds listed in SI-02 under heading "EXP FRT".

Rule 10.3: Track and time applies within interlocking limits at the BNSF crossing at MP 545.6 (CP TC546).

SSI Item 2-E: Fuel Conservation in System Special Instructions does not apply on this subdivision.

Rule 6.31 Exception: Where no permanent or temporary speed restrictions are in effect, UPRR passenger trains may operate at ten (10) MPH above timetable maximum speed for freight trains not to exceed 79 MPH.

SI-09 FRA EXCEPTED TRACKS - None.

SI-10 BUSINESS TRACKS

Track Name	MP	STA. #'S
Logan	615.3	SW593
Newkirk	670.2	SW649
Santa Rosa	697.2	SW675
Leoncito	732.0	SW710

SI-11 INDUSTRIAL LEADS - None.

SI-12 TONNAGE RESTRICTIONS/TPOB

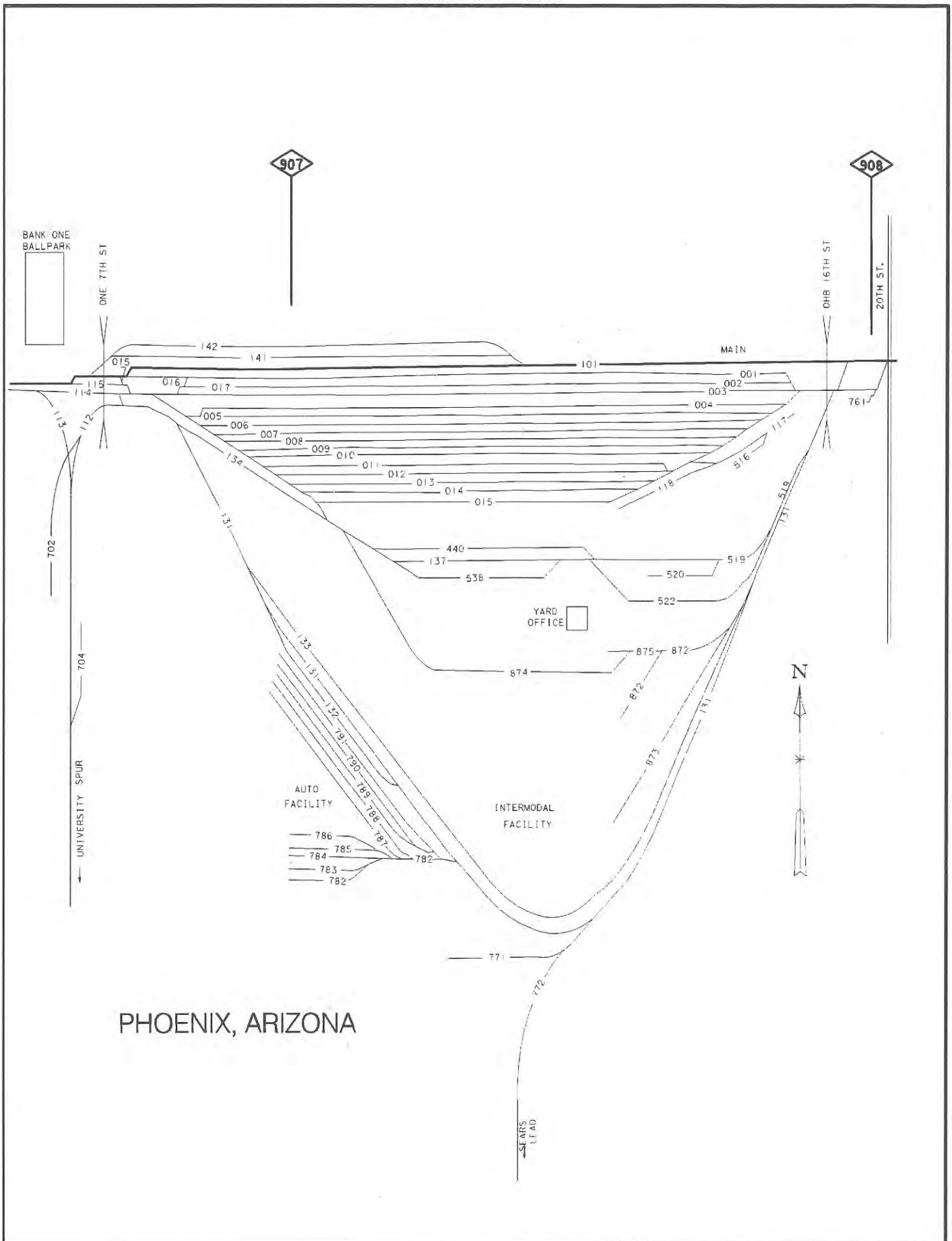
Maximum Gross Weight: 143 Tons.

Tons Per Operative Brake:	Tons Per Dynamic Brake Axle:	Maximum Speed:
80+ to 100		65 MPH
100+ to 132		60 MPH
Over 132		45 MPH

SI-13 TRAIN MAKE-UP RESTRICTIONS - None.

SI-14 MISCELLANEOUS INSTRUCTIONS - None.

Phoenix Yard



PHOENIX, ARIZONA

PHOENIX SUBDIVISION (0685)

Mile Post	Rule 6.3	CP #'s	Radio Display: Picacho to CP PX962: -9696 CP PX962 to MP 802.8: 4545 -(*84)		Sta. #'s	Siding Feet
			WEST ▼ STATIONS	EAST ▲		
979.7	CTC	SP937	PICACHO (2.6)		T SP359	
977.1		PX977	CP PX977 (14.7)			
962.4	TWC ABS	PX962	COOLIDGE (13.5)		LB377	
948.9			MAGMA (11.7)		LB389	5733
937.2			GERMANN (26.1)		LB400	8207
911.1			KENDALL (4.1)		LB427	5383
907.0	YL ABS		PHOENIX YARD (14.0)	BTY		
893.0	TWC ABS		CASHION (17.3)		LB445	4825
875.7			BUCKEYE (14.4)		LB462	3707
861.3			ARLINGTON (39.0)		T LB476	3628
822.3			HYDER (41.4)		LB515	3688
802.8			END OF MAIN TRACK			

(175.6)

SI-01 MAIN TRACK AUTHORITY

CTC between:
MP979.7 and MP962.4.

ABS between:
MP962.4 and MP802.8.

TWC between:
MP962.4 and MP911.0;
MP899.0 and MP802.8.

Yard Limits between:
MP911.0 and MP899.0.

SI-02 MAXIMUM SPEED TABLE

Maximum Speed	MPH
Between Mileposts 979.7 and 802.8	
(Except as Below)	60
979.7 and 979.3.....	25
979.3 and 975.6.....	45
963.5 and 957.0.....	40
950.1 and 949.6.....	40
924.2 and 922.0.....	40
922.0 and 920.8.....	25
920.8 and 916.5.....	40
916.5 and 913.6.....	20
913.6 and 907.9.....	30
907.9 and 906.7.....	20
906.7 and 905.6.....	15
905.6 and 904.8.....	20
904.8 and 802.8.....	25

SI-03 OTHER SPEED RESTRICTIONS

Maximum Speed	MPH
1. Thru Sidings & Turnouts	
All sidings.....	10
2. Dual Control Switch Turnouts	
Turnout: Picacho CP SP937.....	25
3. Misc. Speed Restrictions	
Arlington MP859.3 Palo Verde Power Plant Lead.....	25
All movements within plant with locomotive bell ringing.....	5
Picacho: west leg of wye.....	10
Magma: Copper Basin and Magma RR yard tracks and west lead between tracks 602 and 604.....	5
Phoenix Yard: Yard 2, track 112.....	5
Campo: Yard 4-all curves in tracks 800 & 820.....	5
Campo: Yard 5-all curves in tracks 113, 720, 736, 745 & 760.....	5

SI-04 MAIN TRACK DESIGNATIONS

Main Track out of service between MP854.0 and MP802.8.

SI-05 MILEPOST EQUATIONS

MP957.09 = MP958.42

SI-06 RCL OPERATIONS - None.

SI-07 ITEM 13 TRAIN DEFECT DETECTORS

% 975.6	(#) 911.0	# 856.5
(#) 969.9	% 899.0	(#) 836.5
(#) 953.0	(#) 890.5	(#) 816.5
(#) 941.6	% 880.0	% 808.9
(#) 927.5	(#) 873.5	

SI-08 RULES ITEMS

Rule 1.11.1.:The employee who is to remain awake must inspect passing trains from the ground on side adjacent to their train.

Rule 6.31 Exception: Between Picacho and Phoenix, where no permanent or temporary speed restrictions are in effect for freight trains, Union Pacific passenger trains may operate at ten (10) MPH above maximum authorized speed for freight trains.

Rule 6.32.1.:A member of crew must precede all movements over xing at following locations:
Phoenix: Eb Pearce trk 702 over Lincoln Street;
Pipeola: Xng within SFP Pipe Line reservation.

Rule 6.32.2 AUTOMATIC WARNING DEVICES:
Application - When a train is issued a track bulletin stating:

"AUTOMATIC CROSSING DEVCE NOT WORKNG PROPERLY AT (location) PROTECT CROSSING UNLESS OTHERWISE INSTRUCTED BY SIGNAL EMPLOYEE"

Part reading "PROTECT CROSSING" requires train to stop before occupying the crossing. After a crew member is on the ground at the crossing to warn highway traffic, proceed over the crossing on hand signals from that crew member.

Rule 7.7. Campo, Yard 4: Do not kick or drop cars into the 800 lead which would make contact with another car(s) in the curve connecting to the main track.

Rule 81.8 Close Clearances:
High/Wides are being stored at Arlington siding, yard 10, track 176. Trains or engines handling wide loads exceeding 106" must not meet or pass another wide load between switches at Arlington siding. Trainmen must not ride on the side of any car when meeting or passing wide loads due to close clearance.

PHOENIX SUBDIVISION (0685)

SI-08 RULE ITEMS Continued...:

Rule 7.10. Phoenix Yard: Following applies for movements on east and west legs of wye, tracks 1/112 and 1/113:

Before movement commences, gates must be opened and locked.

When movement is completed, gates must be immediately closed and locked.

Rule 8.3. Phoenix Yard: Main track switch at the east end of trk 113 MP906.1, may be left lined and locked for other than main track movement.

Rule 9.3. Phoenix Yard BNSF Crossing MP905.4:

Westward: When signal governing movement over crossing displays STOP and PROCEED, after stopping, train or engine may move toward crossing but must stop at least 50 feet before fouling crossing and not proceed until a member of the crew determines that conflicting route is clear and both derails are in derailing position.

Eastward: When signal governing movement over crossing displays STOP and PROCEED, after stopping, train or engine must not proceed past signal and over crossing until member of crew determines that conflicting route is clear and both derails are in derailing position.

Rule 31.1.1.D.: Hand brakes may be applied on the head end of eastward trains at Phoenix Yard.

SI-09 FRA EXCEPTED TRACKS

Phoenix Yard:

- * All tracks in Yards 2, 4, 5 and 6;
- * Trks 710-712 and 190;
- * University Spur - trks 112, 725, 750 & 768;
- * Sears Lead - trk. 770.

SI-10 BUSINESS TRACKS

Track Name	MP	STA. #'S
Randolph	966.4	LB373
Higley	932.0	LB405
Gilbert	927.0	LB411
McQueen	923.6	LB414
Mesa	921.8	LB416
Tempe dt.	915.3	LB424
Tempe	914.4	LB423
Aristuc	909.4	LB429
Phoenix	906.0	LB432
Campo	902.0	LB435
23rd. Ave Phoenix	904.0	LB434
Cotpro	900.8	LB436
Pipeola	900.4	LB437
Fowler	898.1	LB440
Tolleson	895.7	LB442
Litchfield dt.	889.3	LB448
Dixie	865.7	LB472
Gillespie	851.0	LB487
Horn	813.2	LB525
Litchfield	889.7	LB447

SI-11 INDUSTRIAL LEADS

Tempe Industrial Lead(0687)

9.7 miles; MP0.0 to MP9.7.
Between main track switch MP0.0 (Tempe dt.) and Chandler Blvd. MP7.7 (West Chandler) the maximum speed is 20 mph.

Between Chandler Blvd. MP7.7 and end of lead MP9.7:

Maximum speed is 10 mph.

Yard 7, all curves in track 705, do not exceed 5 MPH.

Maximum Gross Weight - 143 Tons.

Derail located on lead track at MP 0.2.

Business Tracks	MP	Sta.#'s
Peterson	2.4	U0202
Helena	4.0	U0203
West Chandler	7.7	U0207

Litchfield Industrial Lead(0686)

2.9 miles; MP889.3 to MP892.2.

Six-axle locomotives are prohibited from operating on entire Industrial Lead.

All movements restricted to a maximum of 2 locomotives and 5 cars.

Entire Lead is FRA Excepted track.

Chandler Industrial Lead(0688)

19.6 miles long; MP923.6 to MP943.2.

Entire Lead is FRA Excepted Track.

Business Tracks	MP	Sta.#'s
Tremaine	925.4	U0001
Chandler	929.3	U0007
Serape	934.3	U0012
Dock	943.2	U0016

Roll Industrial Lead(0689)

32.1 miles; MP 770.7 to MP 802.8.

Maximum speed 20 MPH.

ABS in effect on entire lead.

All movements in ABS on the Roll Industrial Lead must be made at restricted speed regardless of signal indication.

NOTE: Lead Track out of service between

MP 802.8 to MP 782.3.

Derails located on Lead Track at

MP 771.0 and MP 777.0.

Trains and engines switching yard tracks be governed by Rule 6.32.2 at Avenue 34 MP774.9 (McElhaney).

Business Tracks	MP	Sta.#'s
McElhaney	774.8	LB567
Roll	780.9	LB567
Growler	793.0	LB555

SI-12 TONNAGE RESTRICTIONS/TPOB

Maximum Gross Weight: 158 Tons

SI-13 TRAIN MAKE-UP RESTRICTIONS

Maximum length for trains operating on Phoenix Subdivision is 8,000 feet total train length including locomotives.

SI-14 MISC. INSTRUCTIONS

6-axle locomotives are prohibited from operating on east or west leg of wye at Magma.

Phoenix Yard: Do not operate 6-axle units OR handle cars exceeding 65 feet in length coupled consecutively, on lead trk 112 between Grant Street and Buckeye Road.

Freight trains must receive permission from Yardmaster or their representative before entering or departing yard.

Freight trains or engines departing yard to enter TWC must receive permission to depart from Train Dispatcher and Yardmaster.

NOGALES SUBDIVISION (0683)

Mile Post	Rule 6.3	CP #s	Radio Display: Cherry Avenue to Nogales: 4545 - (*84)		Sta. #s	Siding Feet
			SOUTH ▼ STATIONS	NORTH ▲		
984.2	TWC	SP985	CHERRY AVENUE (56.8)		SP317	
1041.0	YL		RIO RICO (7.0)	Y		4870
1048.0			NOGALES (1.9)	BY	LB380	
1049.9			END OF TRACK	Y		
(65.7)						

SI-01 MAIN TRACK AUTHORITY

TWC between:
MP984.8 and MP1038.8.

Yard Limits between:
MP1033.8 and MP1048.0.

SI-02 MAXIMUM SPEED TABLE

Maximum Speed	MPH
Between Mileposts 984.2 and 1049.9	
(Except as Below).....	40
984.2 and 985.2.....	10
985.2 and 988.7.....	25
1025.8 and 1026.6.....	25
1039.5 and 1047.5.....	25
1047.5 and 1048.0.....	20
1048.0 and 1049.9.....	10

SI-03 OTHER SPEED RESTRICTIONS

Maximum Speed	MPH
1. Thru Sidings & Turnouts	
Siding Rio Rico.....	10
2. Dual Control Switch Turnouts (No Exceptions.)	
3. Misc. Speed Restrictions	
Sahuarita:	
Cyprus Mine spur - East.....	25
Cyprus Mine spur - West.....	15
Cyprus Mine Spur - Hall road xing at overhead conveyor belt.....	5
Anamax Mine spur - Eastward.....	20
Anamax Mine spur - Westward.....	15
Anamax Mine spur - Exceptions:	
MP1004.2 and MP1004.7.....	10
MP1006.1 and MP1009.5.....	10
MP1009.5 and MP1010.1.....	5
AS&R Mine spur - Eastward.....	20
AS&R Mine spur - Westward.....	15

SI-04 MAIN TRACK DESIGNATIONS

Following Track Segments are designated as "Other than Main Track", Rule 6.28 applies within these limits:
Between MP 984.2 and MP 984.8;
Between MP 1048.0 and MP 1049.9.

SI-05 MILEPOST EQUATIONS

MP 984.2 = MP 985.2 on the Gila Subdiv.

SI-06 RCL OPERATIONS - None.

SI-07 ITEM 13 TRAIN DEFECT DETECTORS

- (#) 993.6
- (#) 1010.2
- (#) 1028.1
- (#) 1042.2

SI-08 RULES ITEMS

Rule 1.11.1.:The employee who is to remain awake must inspect passing trains from the ground on side adjacent to their train.

Rule 6.31 Exception: Where no permanent or temporary speed restrictions are in effect, UPRR passenger trains may operate at five (5) MPH above timetable maximum speed for freight trains.

Rule 6.32.2:Trains and engines making eastward movement out of Empire Machinery Lead (Yard 2, trk 702) be governed by Rule 6.32.2. STOP sign installed.

Rule 7.6.:When leaving cars on spur tracks going to AS&R (720) and Cypress Mines (731 and 750) a minimum number of hand brakes must be secured as follows:
1 to 10 cars.....all hand brakes.
10 or more cars...50% of hand brakes but no less than 10.

Rule 31.7.1. Sahuarita: Retaining valves must be used on all cars on descending grades as follows: at AS&R, Anamax, and Cyprus mines, all retainers must be used. Descending movement will not be made unless train has a minimum of four axles of operative dynamic brake for each 15 cars in train.

Santa Cruz River Bridge: Walkway on bridge at MP 1040.18 over Santa Cruz River is out of service. Northbound trains arriving Rio Rico must stop south of bridge for air test.

SYS Special Instructions: Item 2-C - Exception No. 1 applies when a Level 2 Heat Restriction is in effect.

SI-09 FRA EXCEPTED TRACKS - None.

SI-10 BUSINESS TRACKS

Track Name	MP	STA. #S
Aldona (S).....	992.4	LB105
Sahuarita	1002.4	LB110
Amado (S).....	1021.1	LB118

SI-11 INDUSTRIAL LEADS - None.

SI-12 TONNAGE RESTRICTIONS - None.

SI-13 TRAIN MAKE-UP RESTRICTIONS

When train tonnage exceeds 5,000 actual tons, the first 5 cars behind the road engine must weigh 50 tons or more provided train contains 5 cars that weigh 50 tons or more. For application of this makeup restriction, two consecutively loaded platforms of an articulated or solid drawbar connected car are to be considered the equivalent of one car weighing 50 tons.

SI-14 MISC. INSTRUCTIONS

6-axle locomotives are prohibited from operating on the Cyprus and Asarco Leads at Sahuarita; and trk 128 at Rio Rico.

Sahuarita: At AS&R plant spur to Rod and Ball Mill, cars must not be moved beyond face of building.

Derail located on AS&R Mine Spur (Trk 720) at MP999.98. Derail must be left in DERAILING position except when placed in non-derailing position to permit movement.

Derail located on Anamax Mine Spur (Trk 731) at MP 1003.05. Derail must be left in DERAILING position except when placed in non-derailing position to permit movement.

SPECIAL CONDITION-INITIAL TERMINAL AIR BRAKE TEST

The Union Pacific Railroad Company (UP) petitioned the Federal Railroad Administration (FRA) to grant a temporary waiver of compliance from certain provisions of the Railroad Power Brakes and Drawbars (49 CFR Part 232.12 "Initial Terminal Road Train Airbrake Test"). This request was assigned docket number FRA-2001-8697. On April 26, 2001, the Safety Board reviewed the waiver petition, fielded investigation, and technical staff findings and determined that the waiver be granted under the following conditions:

1. A set and release of brakes as prescribed by Union Pacific Railroad Company Air Brake Rules (Rev 6/98) is observed on the rear car after UP train crews has coupled their locomotive to the train in the Nogales Yard, Arizona, before departure to Rio Rico, Arizona, where an Initial Terminal Air Brake Test as prescribed by Union Pacific Railroad Company Air Brake Rule 30.2 Initial Terminal Road Train Air Brake Test must be performed.
2. At point of interchange (Nogales, Arizona), all cars containing hazardous material shall be inspected at ground level for required marking, labels, placards, securement of closure and leakage.
3. An accurate train consist and proper hazardous material documents must be presented to the UP train crew before departure from Nogales.
4. This waiver is in effect for a five-year period. At the conclusion of the five-year period, FRA reserved the right to extend the waiver if conditions warrant and UP has made a written request for an extension to FRA's office of Safety Assurance and Compliance within six months of the expiration date.
5. FRA reserved the right to modify or rescind this waiver at any time upon receipt of information pertaining to the safety of rail operations or in the event of noncompliance with any conditions of this waiver.
6. All TE&Y employees must have a copy of the waiver as outlined above in these instructions readily available at all times when working into or out of Nogales, Arizona.

Nogales Yard Instructions:

Conductor is responsible to notify his/her Locomotive Engineer when:

1. U.S. Customs or any other regulatory agency or contractor are working on or around the train or out of cars in Nogales Yard;
2. When those working on or around the train are clear and to notify the Locomotive Engineer of same.

CLIFTON SUBDIVISION (0690)

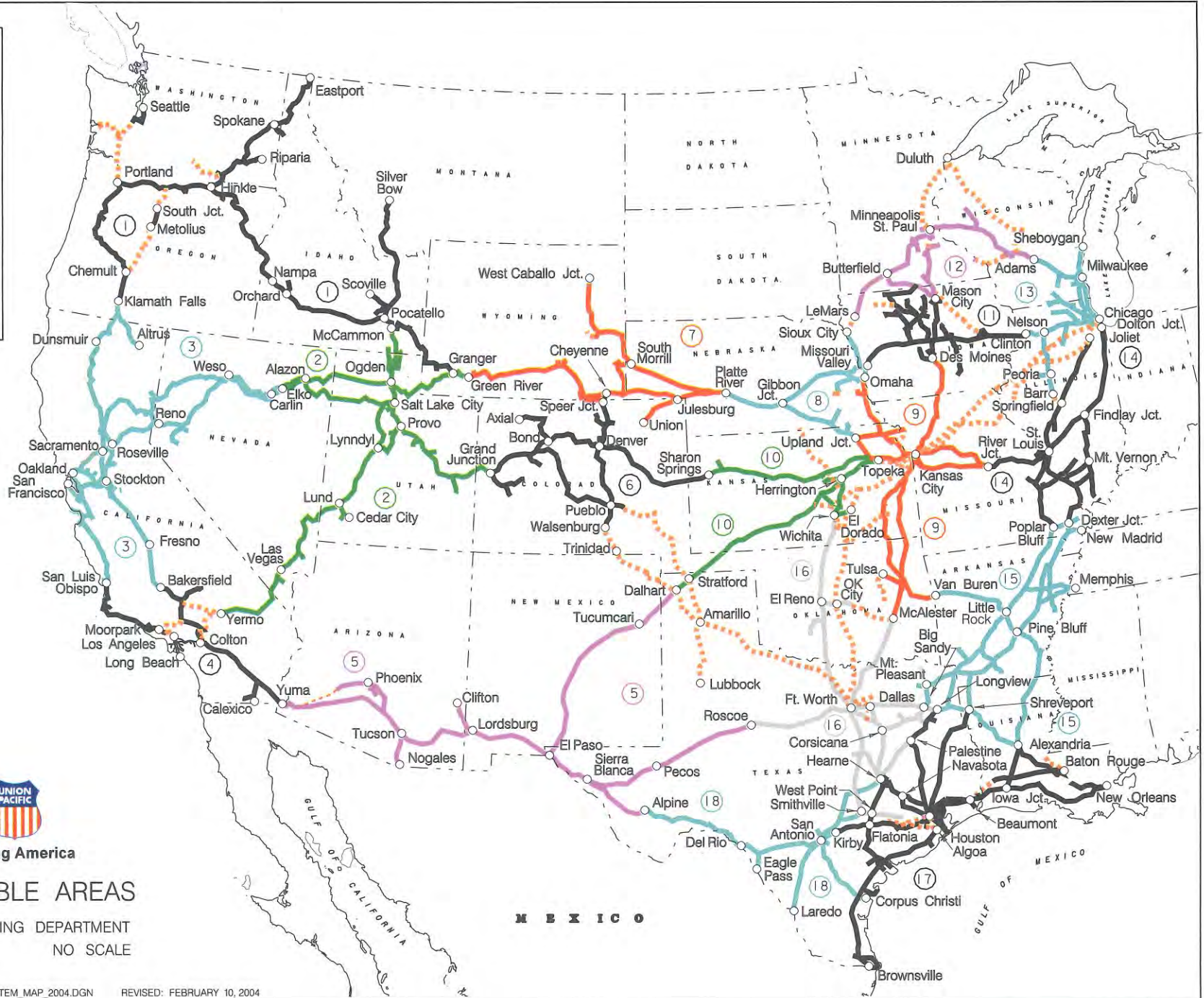
Mile Post	Rule 6.3	CP #'s	Radio Display: Clifton to Lordsburg -0808		Sta. #'s	Siding Feet
			SOUTH ▼ STATIONS	NORTH ▲		
1216.7	YL		CLIFTON (6.5)		Y LB062	
1209.8	TWC		SOUTH SIDING (63.4)			2149
1146.4	YL		LORDSBURG		BTY SP149	
(69.9)						
SI-01 MAIN TRACK AUTHORITY						
TWC Between: MP 1215.3 and MP 1148.5.						
Yard Limits Between: MP 1216.7 and MP 1215.3; MP 1148.5 and MP 1146.4.						
SI-02 MAXIMUM SPEED TABLE						
Maximum Speed			MPH			
Between Mileposts						
1216.7 and 1146.4						
(Except as Below)..... 40						
1216.7 and 1216.0..... 5						
1216.0 and 1197.4..... 10						
1197.4 and 1191.5..... 20						
1191.5 and 1190.0..... 10						
1190.0 and 1185.0..... 20						
1185.0 and 1183.2..... 30						
1176.7 and 1157.2..... 30						
1157.2 and 1149.3..... 10						
1149.3 and 1147.2..... 30						
1147.2 and 1146.4..... 10						
SI-03 OTHER SPEED RESTRICTIONS						
Maximum Speed			MPH			
1. Thru Sidings & Turnouts						
South Siding..... 10						
2. Dual Control Switch Turnouts (No Exceptions.)						
3. Misc. Speed Restrictions						
Clifton Yard Tracks..... 5						
SI-04 MAIN TRACK DESIGNATIONS - None.						
SI-05 MILEPOST EQUATIONS - None.						
SI-06 RCL OPERATIONS - None.						
SI-07 ITEM 13 TRAIN DEFECT DETECTORS						
⌘ 1189.7						
⌘ 1205.2						
SI-08 RULES ITEMS						
Rule 6.32.3 Clifton: Crossing at MP1216.2 is equipped with unit for display of flashing white lights. Display of flashing white lights indicates gates are down.						
SI-09 FRA EXCEPTED TRACKS - None.						
SI-10 BUSINESS TRACKS						
Track Name		MP	STA. #'S			
Guthrie		1205.2	LB051			
Fox		1186.9	LB033			
Duncan		1184.3	LB030			
Summit		1165.3	LB018			
SI-11 INDUSTRIAL LEADS - None.						

<p>SI-12 TONNAGE RESTRICTIONS/TPOB</p> <p>On descending grades between Clifton and Guthrie, a train that exceeds 550 tons per axle of operative dynamic brake, one that experiences dynamic brake failure, or if the use of full dynamic brakes and an 18 pound brake pipe reduction will not control the train at the allowable speed, the train must be STOPPED and sufficient hand brakes set to prevent movement. The train must not proceed until additional dynamic braking is obtained, tonnage is reduced or retainers on all cars are placed in operative position. The train must not proceed except as instructed by the Manager Operating Practices.</p>	<p>SI-13 TRAIN MAKE-UP RESTRICTIONS</p> <p>Westward trains must not exceed 35 loads from Clifton to South Siding and 70 loads from South Siding to Fox. All loads must be entrained on the head-end of train.</p>
<p>SI-14 MISC. INSTRUCTIONS</p> <p>6-axle locomotives are prohibited from operating on the Clifton Subdivision.</p>	

**The Sunset Timetable # 1 is dedicated to Robert E. Lee.
Robert started his railroad career in 1974 on the MKT and moved into
the UPRR ranks in 1988 with the merger. Over the last 30 years Robert has
spent 24 in the Operating Practices Department working with the
Railroad Rules and Timetables.**

LEGEND

- 1. PORTLAND
- 2. SALT LAKE
- 3. ROSEVILLE
- 4. LOS ANGELES
- 5. SUNSET
- 6. DENVER
- 7. NORTH PLATTE
- 8. COUNCIL BLUFFS
- 9. KANSAS CITY
- 10. SALINA
- 11. IOWA
- 12. TWIN CITIES
- 13. CHICAGO
- 14. ST. LOUIS
- 15. NORTH LITTLE ROCK
- 16. DALLAS/FT. WORTH
- 17. HOUSTON
- 18. SAN ANTONIO
- TRACKAGE RIGHTS



Building America

TIME TABLE AREAS

THE ENGINEERING DEPARTMENT
OMAHA, NE NO SCALE



SAFETY
IS MY
PERSONAL
RESPONSIBILITY