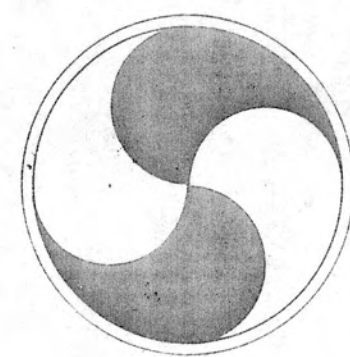
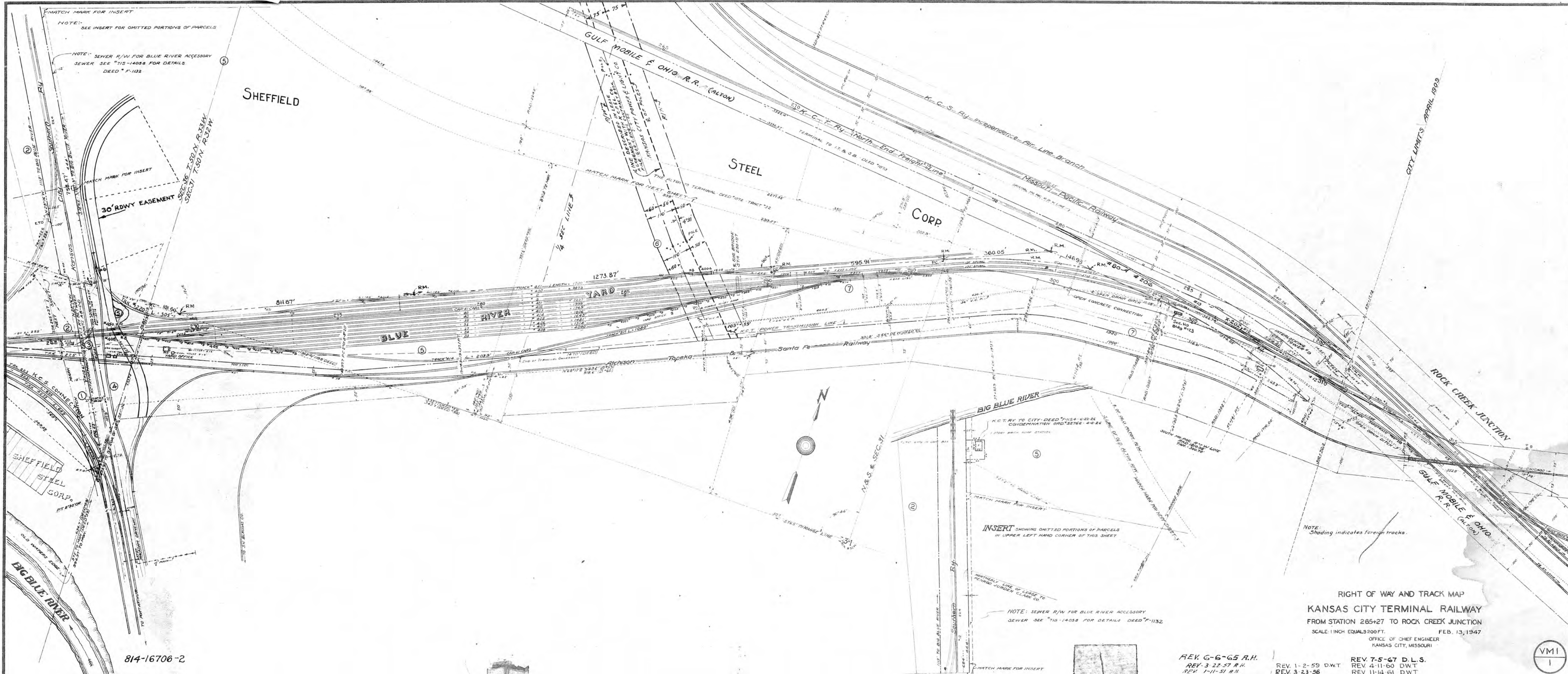


KANSAS CITY TERMINAL RY. CO.

TRACK MAPS

SCALE ~1 INCH EQUALS 200 FEET

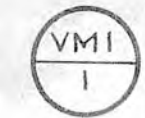


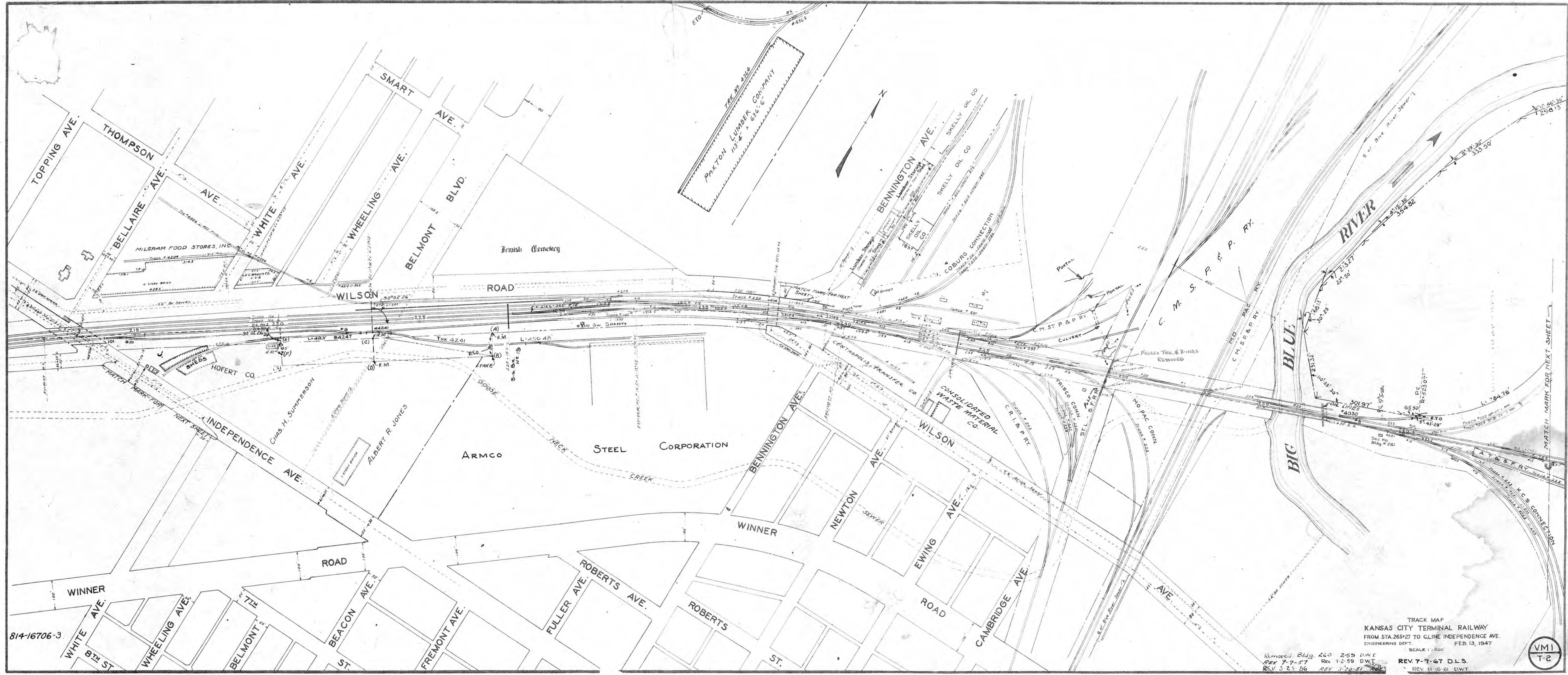


814-16706-2

RIGHT OF WAY AND TRACK MAP
KANSAS CITY TERMINAL RAILWAY
FROM STATION 265+27 TO ROCK CREEK JUNCTION
SCALE: 1 INCH EQUALS 200 FT. FEB. 13, 1947
OFFICE OF CHIEF ENGINEER
KANSAS CITY, MISSOURI

REV. G-6-65 R.H.
REV. 3-22-57 R.H.
REV. 1-11-51 R.H.
REV. 1-2-59 DWT
REV. 3-23-56
REV. 7-5-67 D.L.S.
REV. 4-11-60 DWT
REV. 11-14-61 DWT



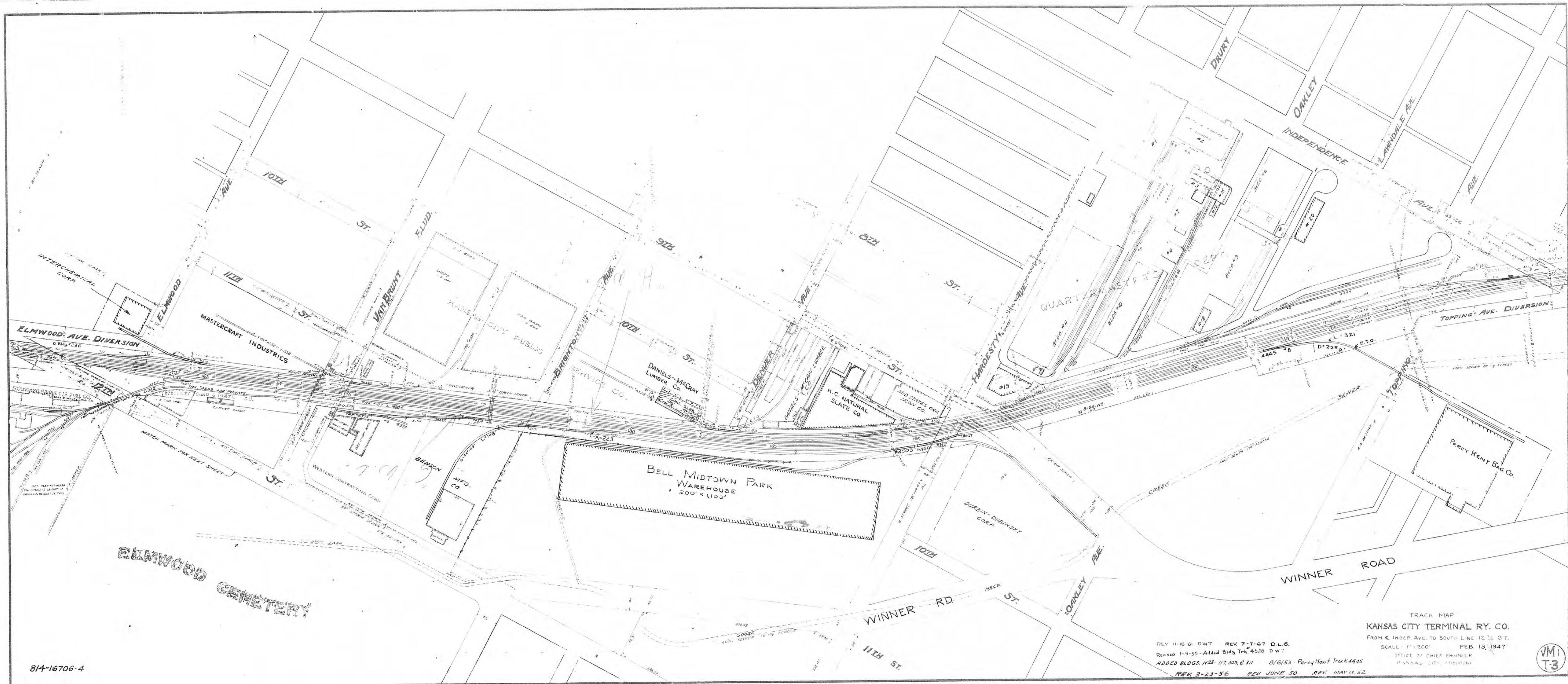


814-16706-3

Removed Bldg. 260 2-55 D.W.T.
REV 7-7-57 REV 1-2-59 D.W.T.
REV 3-23-56 REV 7-20-51

TRACK MAP
KANSAS CITY TERMINAL RAILWAY
FROM STA. 265+27 TO CLINE INDEPENDENCE AVE.
ENGINEERING DEPT. FEB. 13, 1947
SCALE 1"=200'
REV 7-7-67 D.L.S.
REV 11-16-61 D.W.T.

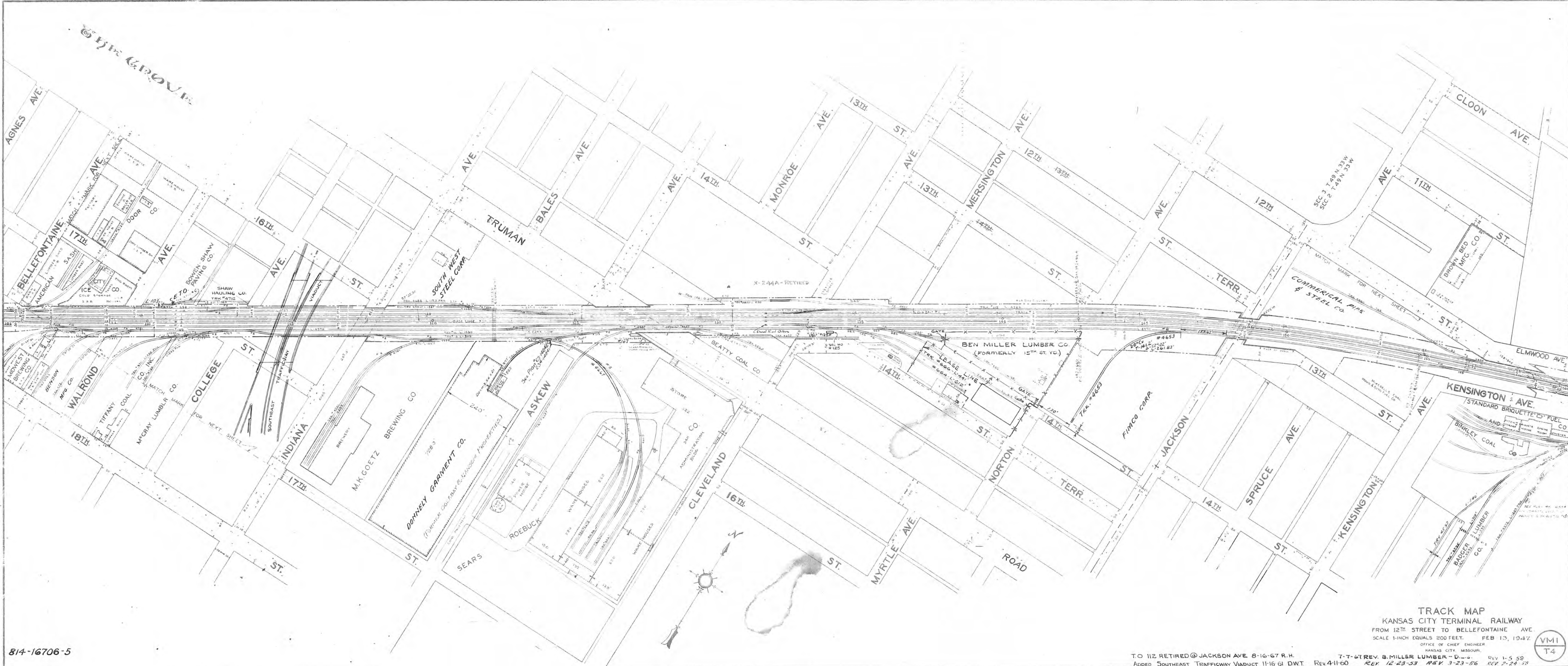




REV. 11-16-61 DWT REV. 7-7-67 D.L.S.
REVISED 1-5-59 - Added Bldg Trk. 4528 DWT
ADDED BLDGS. NOS. 117, 303, & 311 8/6/53 - Perry Kent Trk. 4445
REV. 3-23-56 REV. JUNE 50 REV. MAY 13 52

TRACK MAP
KANSAS CITY TERMINAL RY. CO.
FROM 4 INDEP. AVE. TO SOUTH LINE 12 TO 31.
SCALE 1" = 200' FEB. 13, 1947
OFFICE OF CHIEF ENGINEER
KANSAS CITY, MISSOURI





814-16706-5

T.O. 112 RETIRED@ JACKSON AVE. 8-16-67 R.H.
ADDED SOUTHEAST TRAFFICWAY VIADUCT 11-16-61 DWT. REV. 4-11-60
T-T-67 REV. B. MILLER LUMBER - D.W. REV. 12-23-53 REV. 3-23-56 REV. 7-24-58
REV. 1-5-58

TRACK MAP
KANSAS CITY TERMINAL RAILWAY
FROM 12TH STREET TO BELLEFONTAINE AVE.
SCALE 1-INCH EQUALS 200 FEET. FEB 13, 1947.
OFFICE OF CHIEF ENGINEER
KANSAS CITY, MISSOURI.





REVISIONS	
DATE	EXPLANATION
1-2-22	CA Bracket changed to Quality Roofing Co.
1-15-22	Added Building Sta. 68150
2-2-22	Removed Bldg. Casey Hume Bldg.

TRACK MAP
K.C. TERMINAL RY.
BELLEFONTAINE AVE. TO THE PASEO
CHIEF ENGINEER'S OFFICE FEB. 13, 1927
SCALE 1" = 200'

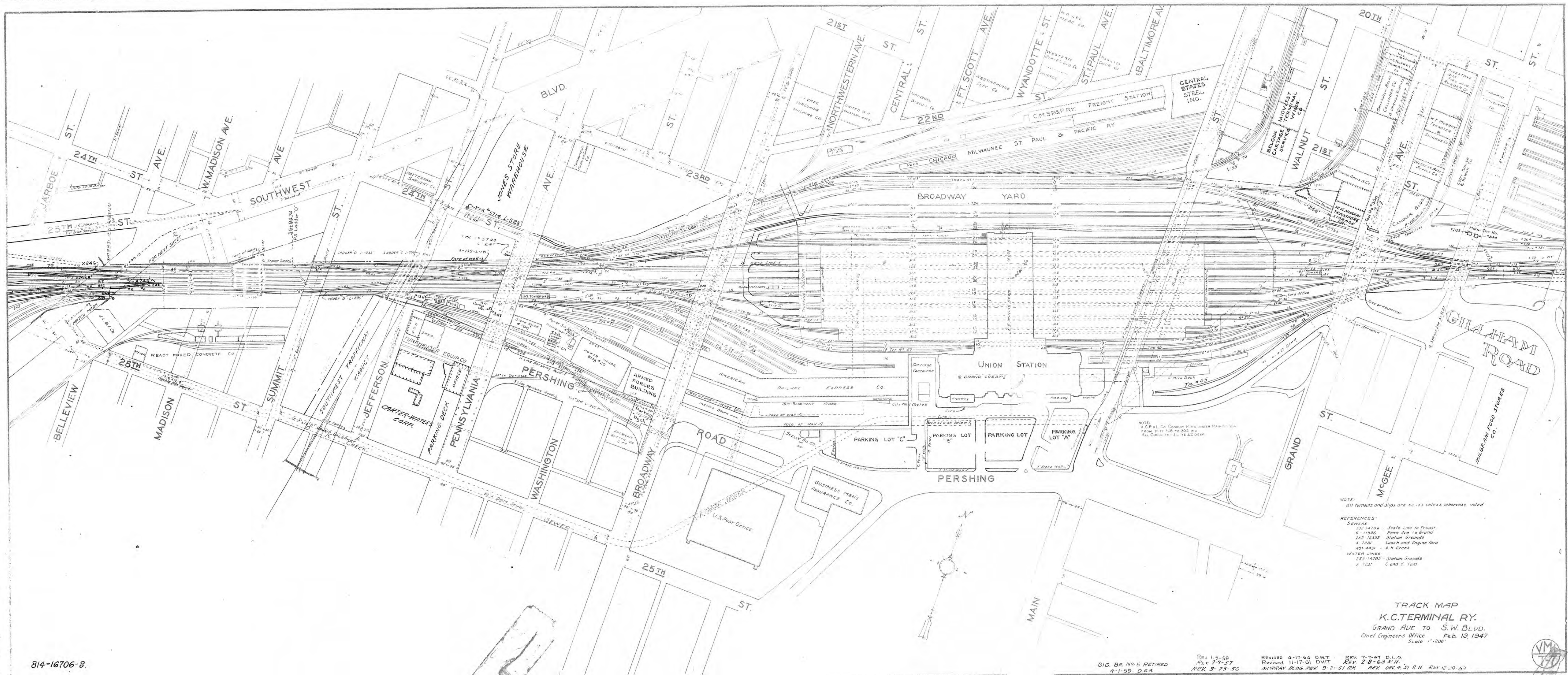


TRACK MAP
KANSAS CITY TERMINAL RAILWAY
VINE ST. TO GRAND AVE.
ENG'G DEPT. FEB. 13, 1947
SCALE 1"=200'

8/4-16706-7

REV. 11-16-51 DWT. REV. 6-3-63 DWT. REV. 7-7-67 D.L.S.
REV. 8-24-60 R.H. REV. 4-11-60 REV. 1-5-59 REV. 9-9-57
REV. 4-29-57 REV. 3-23-56 REV. 4-12-50 REV. AUG '50 REV. AUG '53 REV. JULY '54

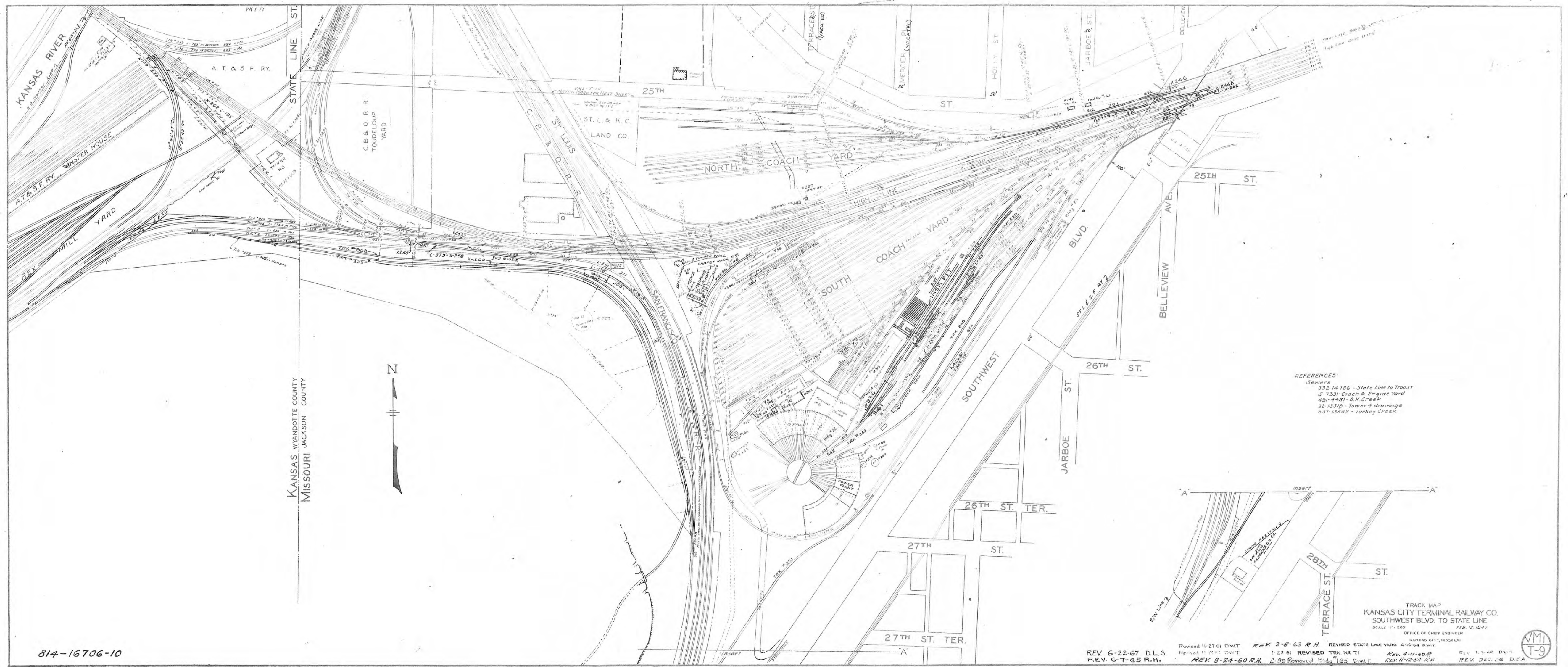




NOTE:
All turnouts and slips are No. 100 unless otherwise noted.

REFERENCES:
SEWERS:
332 14706 State Line to Transit
6 17506 Penn Ave to Grand
253 16382 Station Grounds
5 7231 Coach and Engine Yard
491 4431 U. K. Creek
WATER LINES:
252 14705 Station Grounds
5 7231 C and E Yards

TRACK MAP
K.C. TERMINAL RY.
GRAND AVE TO S.W. BLVD.
Chief Engineers Office Feb. 13, 1947
Scale 1"=200'



REFERENCES:
Sewers
332-14786 - State Line to Troost
5-7231 - Coach & Engine Yard
491-4431 - O.K. Creek
32-13312 - Tower 4 drainage
537-13582 - Turkey Creek

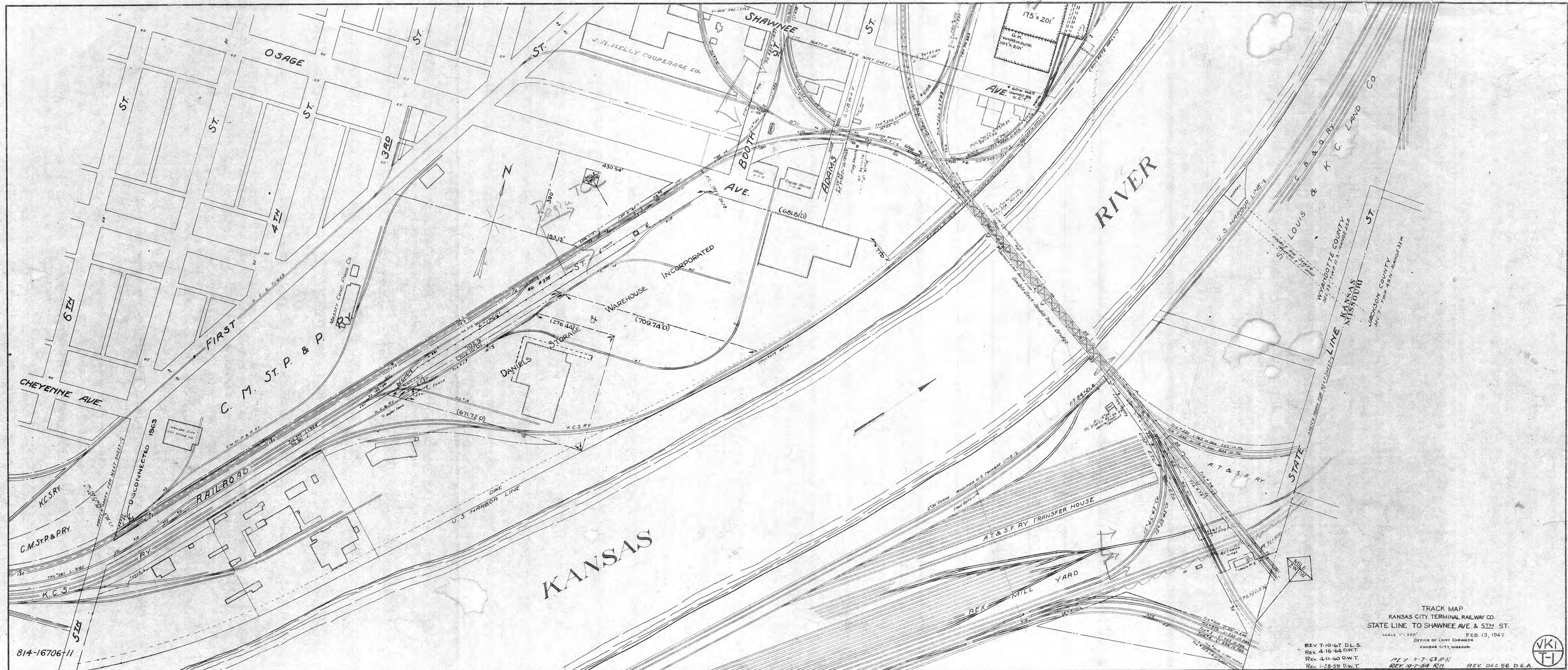


TRACK MAP
KANSAS CITY TERMINAL RAILWAY CO.
SOUTHWEST BLVD. TO STATE LINE
SCALE 1" = 200'
FEB. 12, 1947
OFFICE OF CHIEF ENGINEER
KANSAS CITY, MISSOURI

814-16706-10

REV. 6-22-67 D.L.S.
REV. 6-7-65 R.H.
REVISED 11-27-61 DWT
REVISED 11-27-61 DWT
REV. 8-24-60 R.H.
2.59 Removed Bldg. 65 D.W.T.
REV. 2-8-63 R.H.
REVISED STATE LINE YARD 4-16-64 D.W.T.
1-23-61 REVISED TRK NO. 71
REV. 4-11-60 R
REV. 11-12-54 R.H.
REV. 1-5-60 D.W.T.
REV. DEC. 26 DE A.





814-16706-11

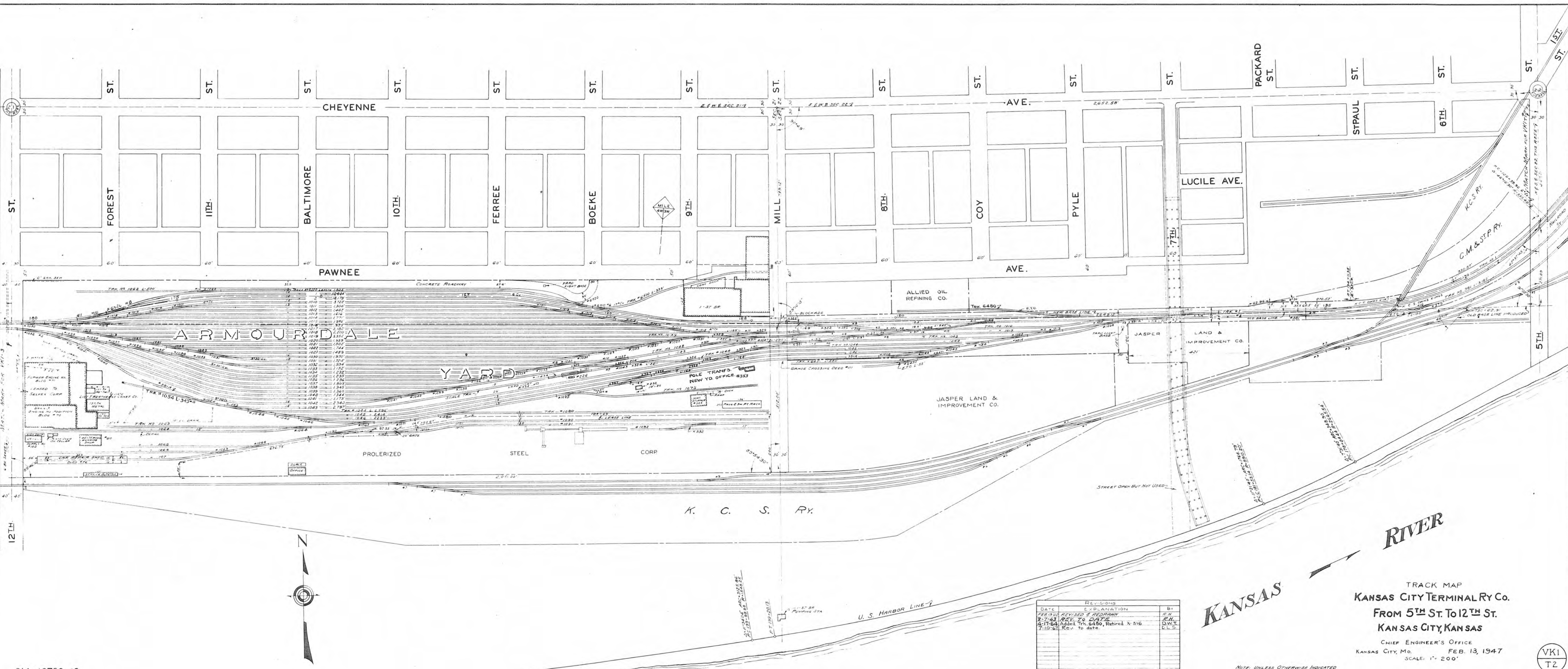
REV. 7-10-67 D.L.S.
REV. 4-16-64 D.W.T.
REV. 4-11-60 D.W.T.
REV. 1-28-59 D.W.T.

TRACK MAP
KANSAS CITY TERMINAL RAILWAY CO.
STATE LINE TO SHAWNEE AVE. & 5TH ST.
SCALE 1"=200'

OFFICE OF CHIEF ENGINEER
KANSAS CITY, MISSOURI

REV. 7-7-63 R.H.
REV. 10-7-54 R.H.
REV. DEC 56 D.E.A.





REVISIONS		
DATE	DESCRIPTION	BY
FEB 13 1947	REVISED & REDRAWN	R.H.
2-7-63	REV. TO DATE	R.H.
4-17-64	Added Trk. 6450, Retired X-516	D.W.T.
7-10-67	Rev. To date	K.L.S.

KANSAS RIVER

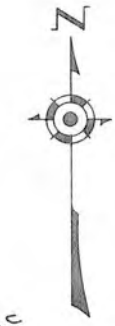
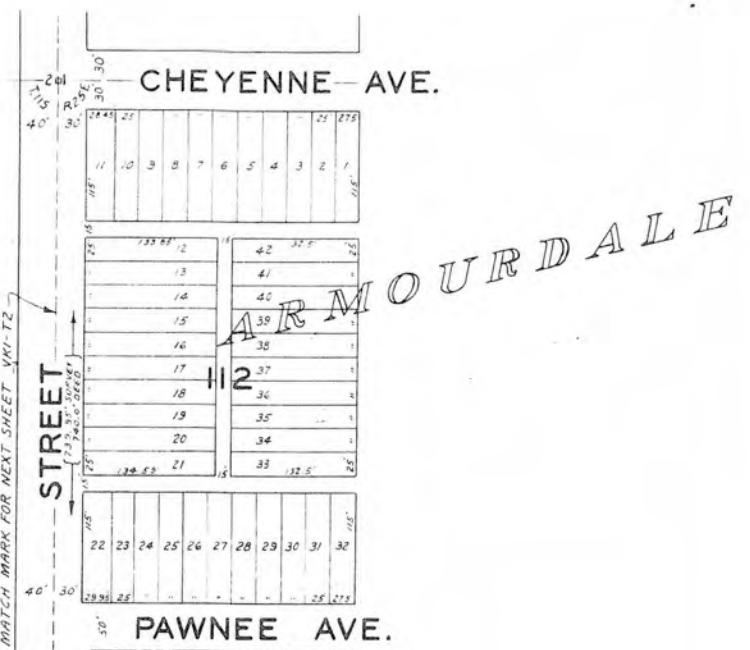
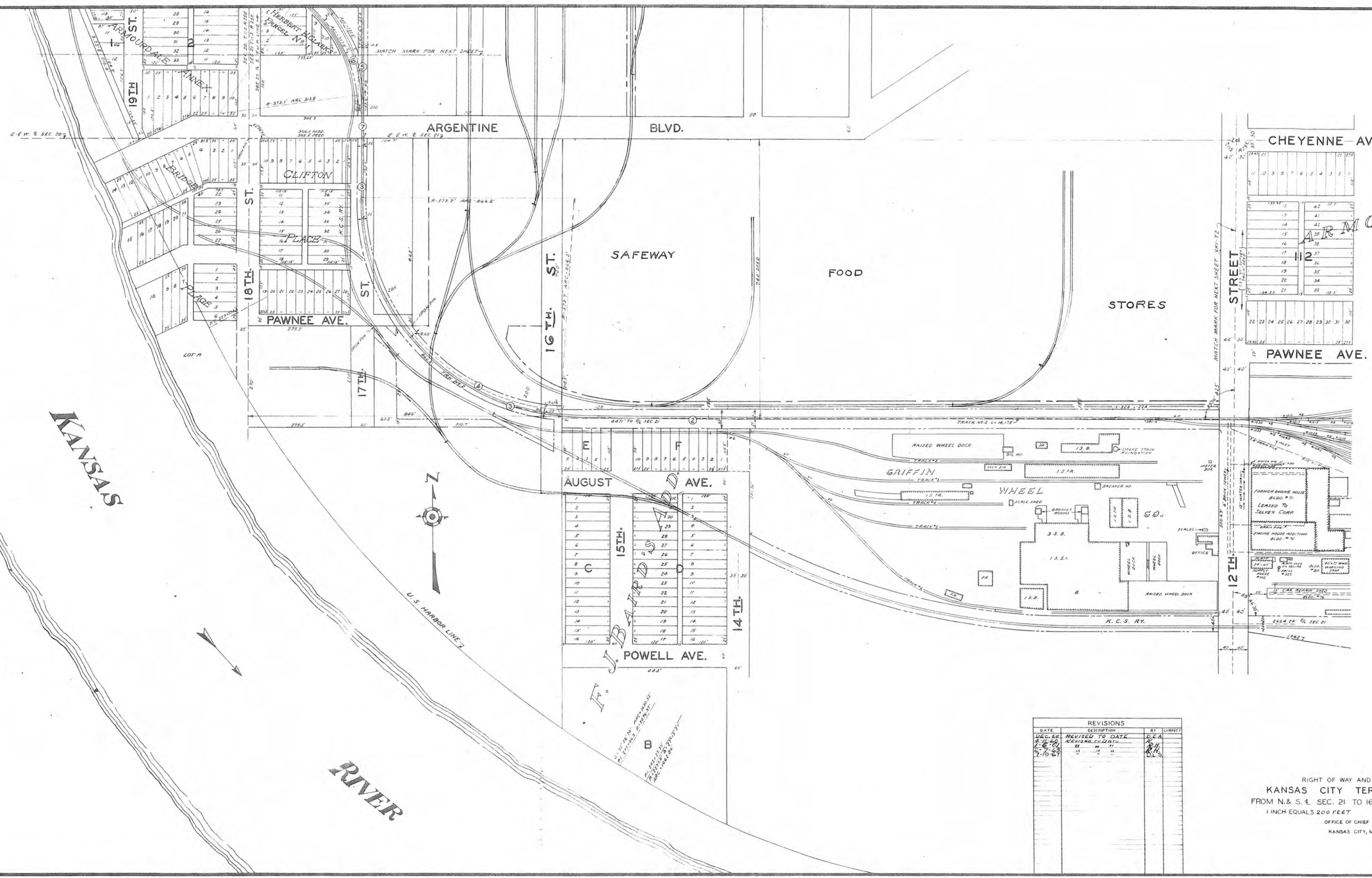
TRACK MAP
KANSAS CITY TERMINAL RY CO.
FROM 5TH ST. TO 12TH ST.
KANSAS CITY, KANSAS

CHIEF ENGINEER'S OFFICE
KANSAS CITY, MO. FEB. 13, 1947
SCALE: 1" = 200'

NOTE: UNLESS OTHERWISE INDICATED
ALL TURNOUTS, ETC. ARE NO. 8'S.

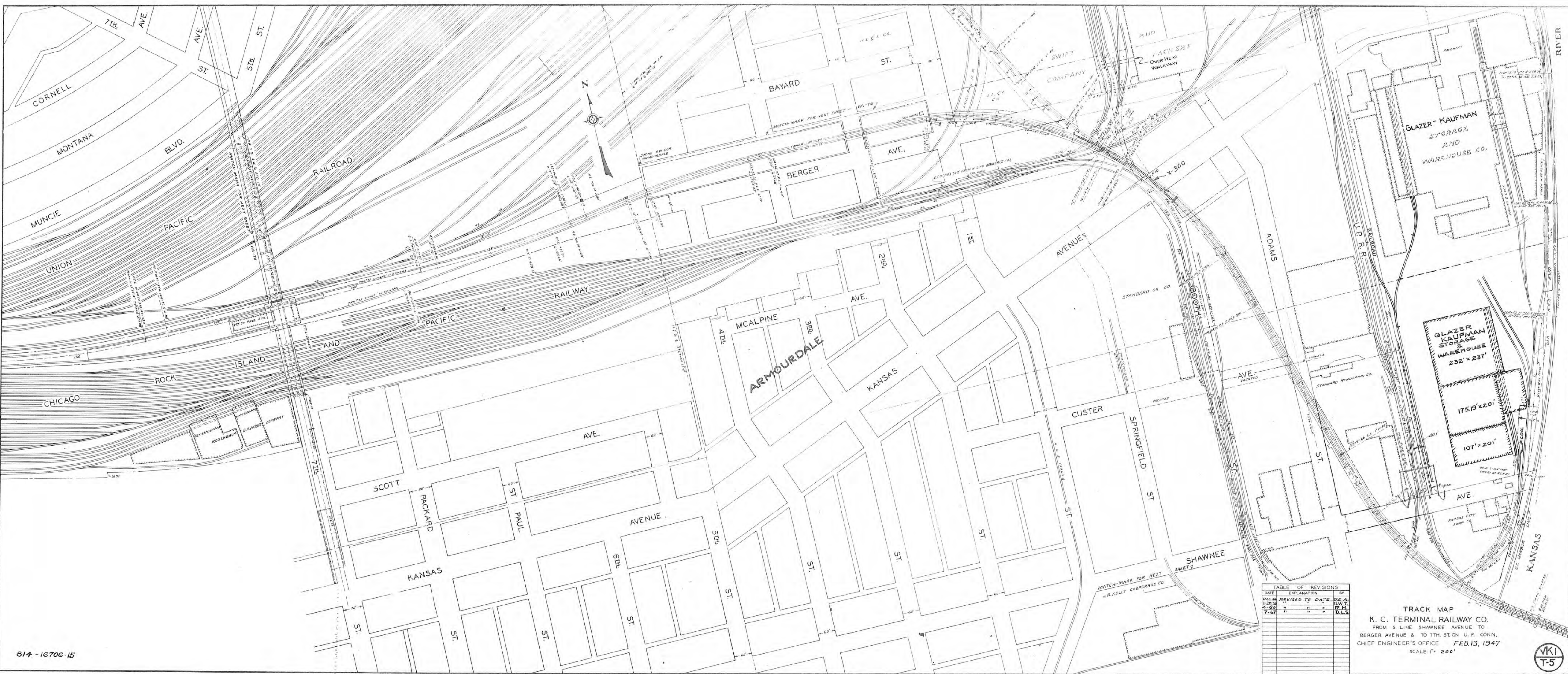
VKI

T2



REVISIONS			
DATE	REVISION TO DATE	BY	CORRECT
1-16-40	REVISED TO DATE	D.A.	
1-16-40	REVISED TO DATE	D.A.	
1-16-40	REVISED TO DATE	D.A.	
1-16-40	REVISED TO DATE	D.A.	
1-16-40	REVISED TO DATE	D.A.	

RIGHT OF WAY AND TRACK MAP
KANSAS CITY TERMINAL RAILWAY
FROM N. & S. 1/4 SEC. 21 TO 160' N. OF CHEYENNE AVE.
1 INCH EQUALS 200 FEET
FEB. 13, 1947
OFFICE OF CHIEF ENGINEER
KANSAS CITY, MISSOURI



814-16706-15

TABLE OF REVISIONS			
DATE	EXPLANATION	BY	CHK.
1-20-35	REVISED TO DATE	D.W.L.	P.H.
7-67	"	"	D.L.S.

TRACK MAP
K. C. TERMINAL RAILWAY CO.
FROM S LINE SHAWNEE AVENUE TO
BERGER AVENUE & TO 7TH ST. ON U. P. CONN.
CHIEF ENGINEER'S OFFICE FEB. 13, 1947
SCALE: 1" = 200'





UNION

PACIFIC

FIFTH

RAILROAD

SECOND

AVE.

THIRD

ST.

BAYARD

ST.

AVE.

FIRST

ST.

CARR

RAILROAD

PACIFIC

UNION

MISSOURI

PACIFIC

RAILWAY

K. C. STOCK YARDS CO.

FOURTH

AVE.

THIRD

BUNKER

ST.

CENTRAL

BERGER

COMPANY

SWIFT

C. R. I. & P.

UNION

PACIFIC

R. R.

K. C. STOCK YARDS CO.

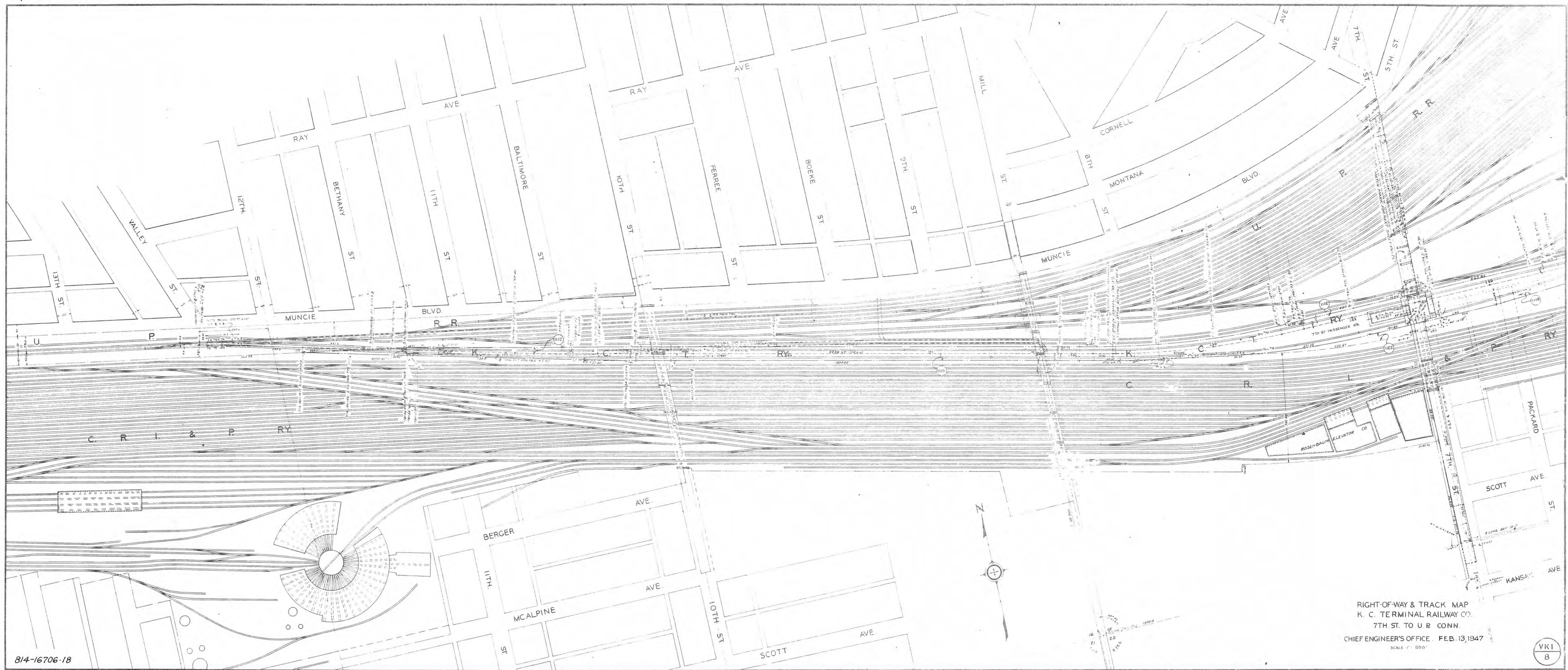
REVISIONS		
DATE	EXPLANATION	BY

TRACK MAP
KANSAS CITY TERMINAL RAILWAY
BERGER AVE. TO CENTRAL AVE.
ENG. DEPT. FEB. 13, 1947
SCALE 1" = 200'

REV. 4-11-60 R.H. REV. 4-52-N.W.A.

VKI
T6

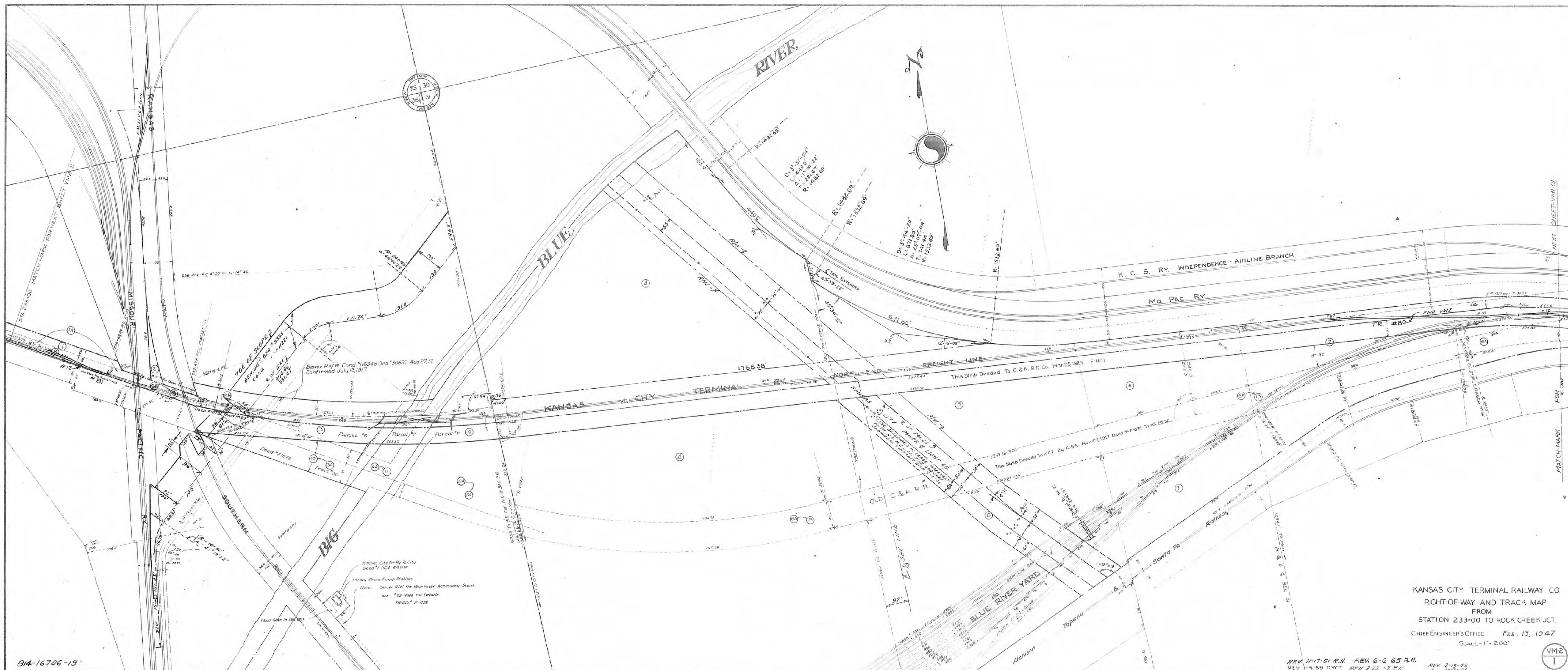
814-16706-16



814-16706-18

RIGHT-OF-WAY & TRACK MAP
K. C. TERMINAL RAILWAY CO.
7TH ST. TO U R CONN.
CHIEF ENGINEER'S OFFICE. FEB. 13, 1947
SCALE 1" = 200'

VKI
8



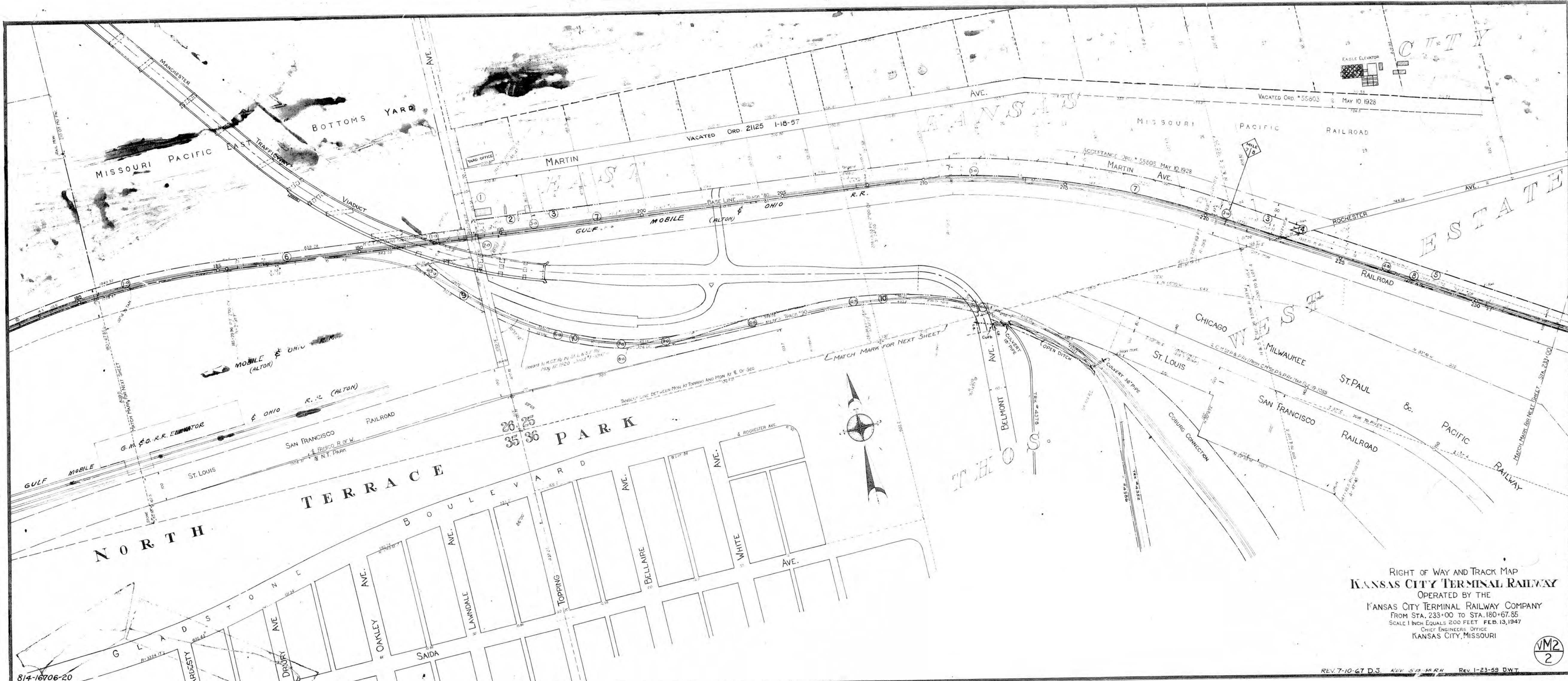
814-16706-19

Kansas City Ter Ry To City
Deed # 1164 6/22/24
1 Story Brick Pump Station
Note: Sewer R/W for Blue River Accessory Sewer
See # 115 14058 For Details
DEED # R-1132

KANSAS CITY TERMINAL RAILWAY CO.
RIGHT-OF-WAY AND TRACK MAP
FROM
STATION 233+00 TO ROCK CREEK JCT.
CHIEF ENGINEER'S OFFICE FEB. 13, 1947
SCALE - 1" = 200'

REV 11-17-61 R.H. REV 6-6-65 R.H.
REV 5-59 D.W. REV 3-22-57 R.H.
REV 2-19-45
REV 1-17-47

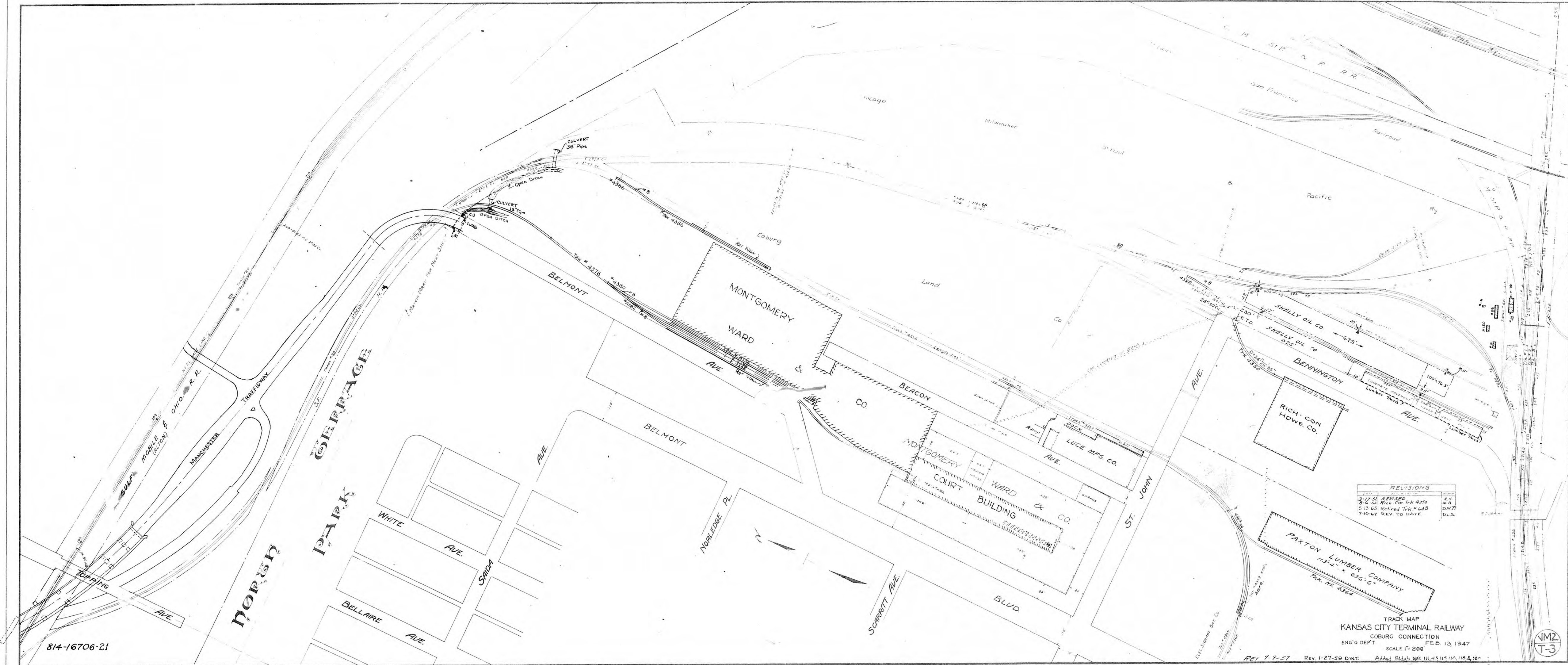
VM2
1



RIGHT OF WAY AND TRACK MAP
KANSAS CITY TERMINAL RAILWAY
OPERATED BY THE
KANSAS CITY TERMINAL RAILWAY COMPANY
FROM STA. 233+00 TO STA. 180+67.55
SCALE 1 INCH EQUALS 200 FEET FEB. 13, 1947
CHIEF ENGINEERS OFFICE
KANSAS CITY, MISSOURI

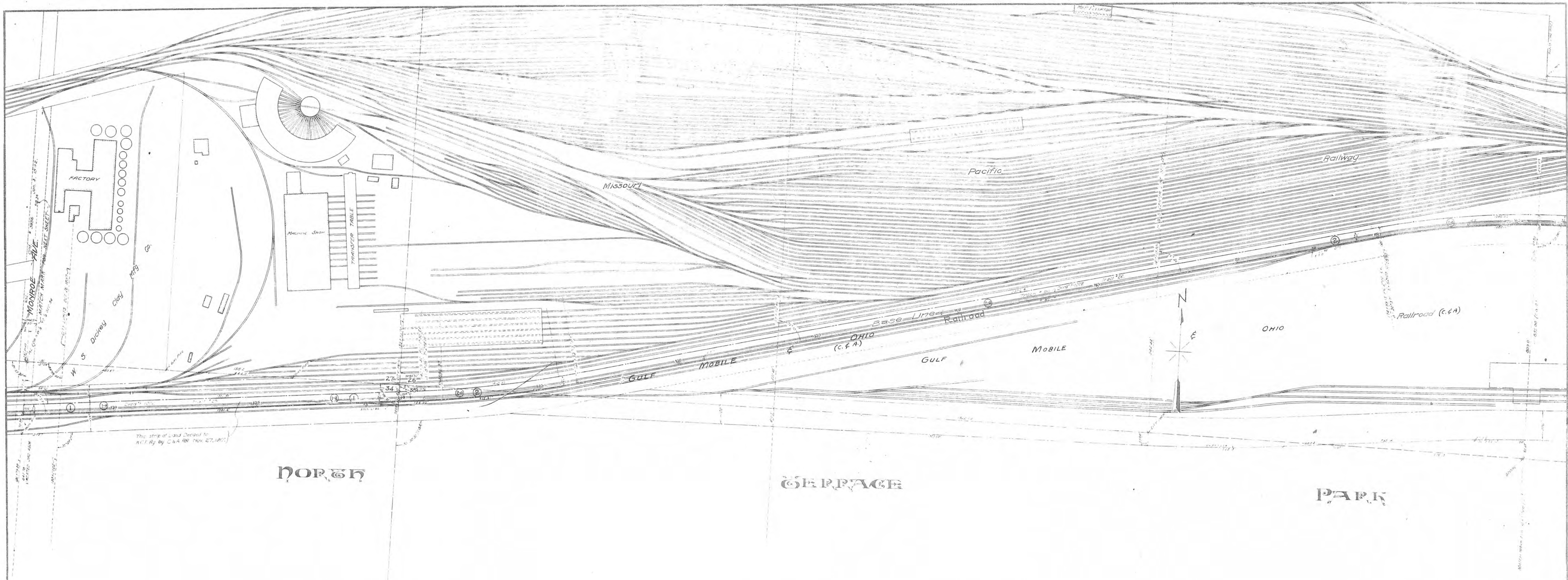


814-16706-21



REVISIONS		
3-17-52	REVISED	E.A.
8-4-53	Revised Trk # 4350	D.W.
5-13-63	Revised Trk # 443	D.W.
7-10-67	REV. TO DATE	D.L.S.

VMZ
T-3





KANSAS CITY MO WATER DEPT.

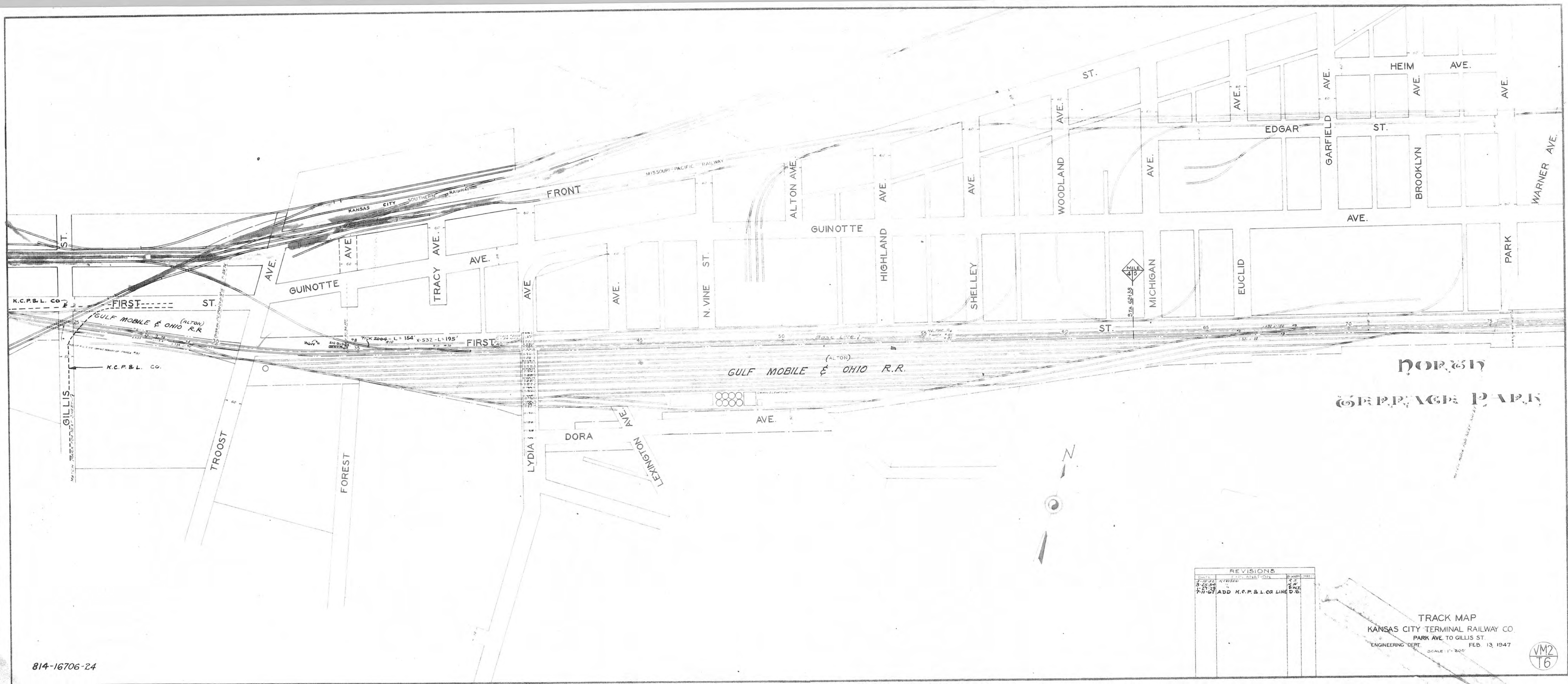
MILE
5/6

STA 115+18

REVISIONS	
5-20-43	CHESTNUT AVENUE
5-20-43	2nd ADD'D
	R.M.

TRACK MAP
KANSAS CITY TERMINAL RAILWAY CO.
FROM & VACATED MONROE TO W LINE WARNER AVE
SCALE 1 INCH EQUALS 200 FEET
FEB 13, 1947
OFFICE OF CHIEF ENGINEER
KANSAS CITY, MISSOURI





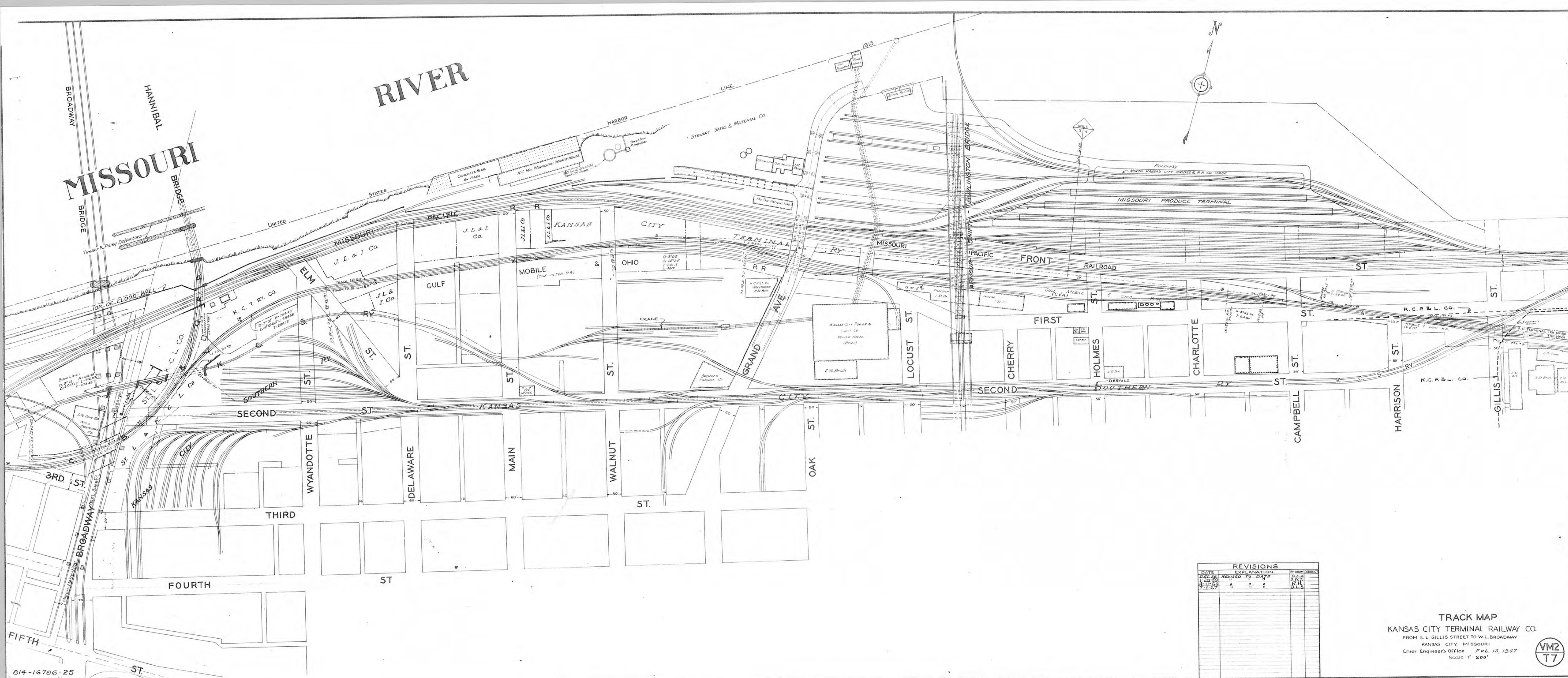
NORTH
ORIENTED MAP

REVISIONS			
NO.	DATE	DESCRIPTION	BY
1	8-25-34	ADDED K.C.P. & L. CO. LINE D.B.	W.M.
2	1-27-35		W.M.
3	7-11-37		W.M.

TRACK MAP
KANSAS CITY TERMINAL RAILWAY CO.
PARK AVE. TO GILLIS ST.
ENGINEERING DEPT. FEB. 13, 1947
SCALE 1" = 200'

VM2
T6

MISSOURI RIVER



REVISIONS		
DATE	EXPLANATION	BY WHOM
1-1-19	REVISED TO DATE	J. C. A.
4-11-20	" " " "	R. H.
7-11-27	" " " "	D. L. S.

TRACK MAP
KANSAS CITY TERMINAL RAILWAY CO.
FROM E. L. GILLIS STREET TO W. L. BROADWAY
KANSAS CITY, MISSOURI
Chief Engineer's Office Feb. 13, 1947
Scale 1" = 200'



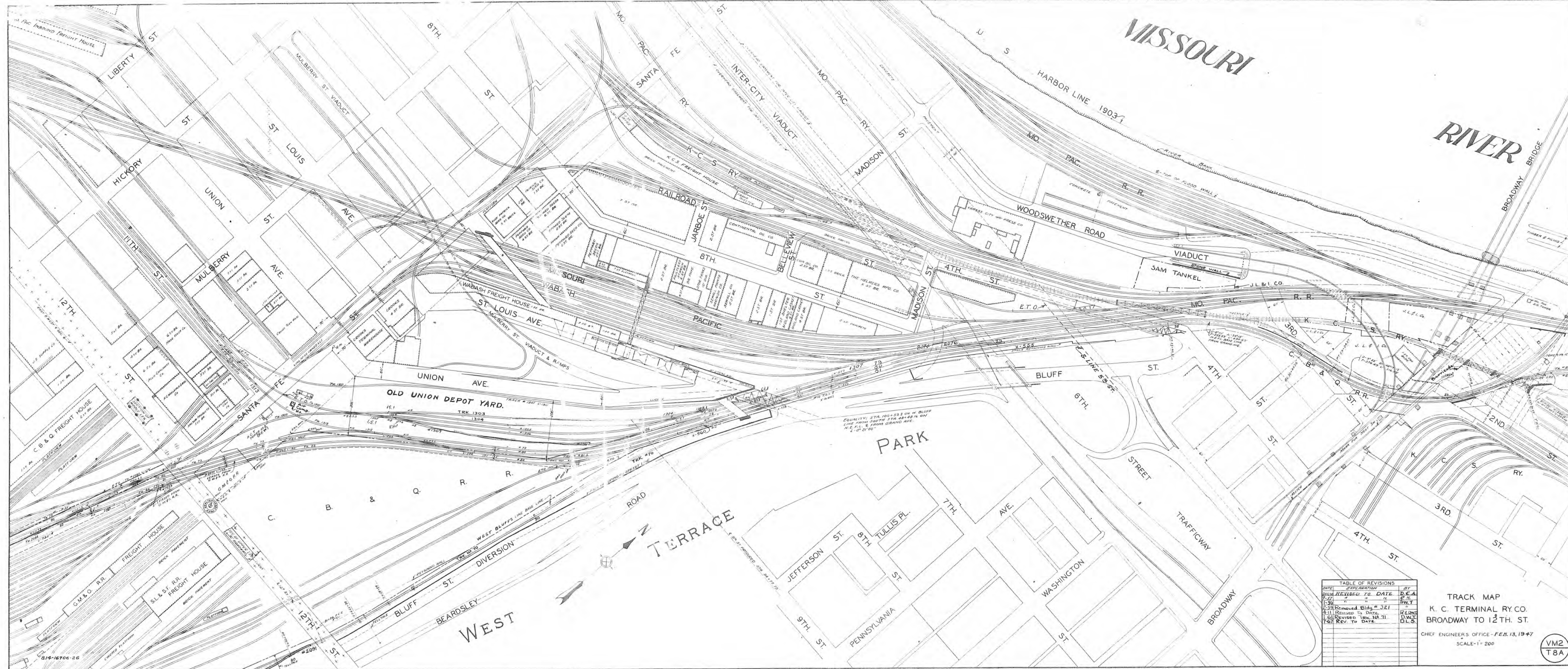
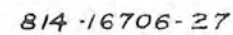


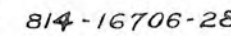
TABLE OF REVISIONS			
DATE	REVISION	BY	CHKD.
7-27	REVIS. TO DATE	D.E.A.	
7-27	"	"	"
1-29	"	"	"
2-29	Removed Bldg # 321	"	"
4-11	Revised to Date	RENO	
1-11	Revised to Date	D.W.I.	
7-27	Rev. to Date	D.L.S.	

TRACK MAP
K. C. TERMINAL RY. CO.
BROADWAY TO 12TH ST.

CHIEF ENGINEER'S OFFICE - FEB. 13, 1947
SCALE - 1" = 200'

VM2
T8A





VM-2
T-10

KC TRY