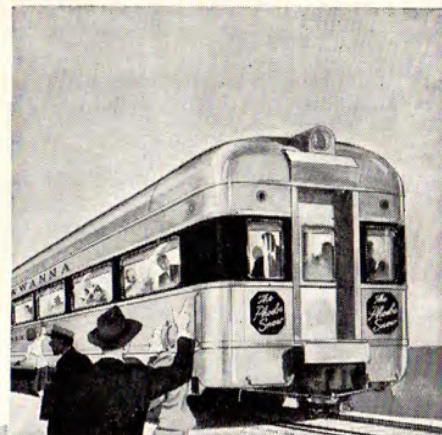


# EFFICIENT SERVICE... MODERN EQUIPMENT

LACKAWANNA steadily maintains its record of convenient, comfortable, courteous and efficient service. With the streamliner THE PHOEBE SNOW and its luxurious equipment, the use of Diesel-powered engines for faster passenger and freight schedules, and the addition of new freight and passenger cars, Lackawanna patrons—shippers and passengers—are assured the finest in rail facilities.

A giant fleet of Diesel-powered engines are in service to speed your freight over the shortest route between New York and Buffalo. Coordinated schedules with connecting lines provide excellent service between the Eastern Seaboard and the West and South.

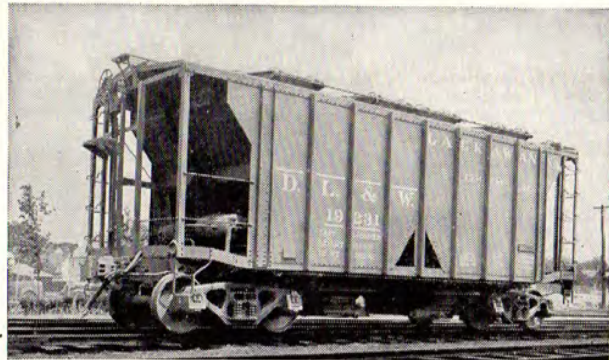
300 new covered hopper cars of 70 tons capacity assure speedier and more efficient handling of freight.



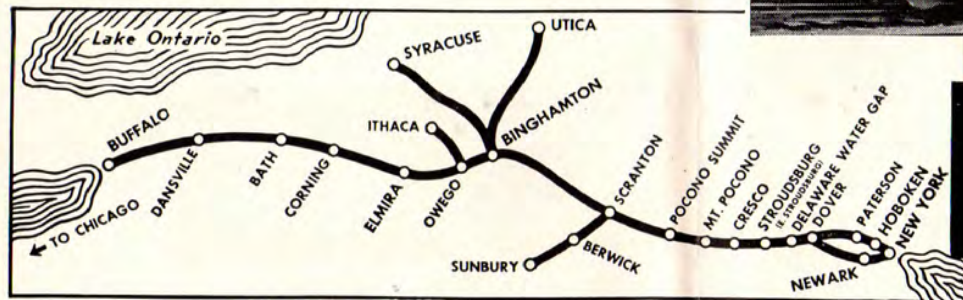
THE PHOEBE SNOW, de luxe daylight train between New York and Buffalo



Diesel-powered freight train crossing the Delaware River bridge at Slateford, Pa.



New steel hopper cars join fleet for cement service



## Lackawanna Railroad

The Route of Phoebe Snow

# Lackawanna Railroad



## The Route of Phoebe Snow

CONDENSED EQUIPMENT OF TRAINS—PARLOR AND SLEEPING CAR LINES, DINING CAR SERVICE—REGULARLY ASSIGNED CARS ARE AIR-CONDITIONED

### WESTWARD

#### THE PHOEBE SNOW No. 3—DAILY

(A Streamlined Train)  
(Via Nickel Plate No. 5)

##### SLEEPING CAR

New York to Chicago

(10 Roomettes—6 Double Bedrooms) (Car 30)

##### TAVERN LOUNGE CAR (D. L. & W.)

New York to Buffalo (Open to all passengers)

##### DINING CAR

New York to Buffalo

##### BUFFET LOUNGE CAR

Binghamton to Syracuse

##### CLUB-DINER-LOUNGE CAR

Buffalo to Chicago

##### RECLINING SEAT COACHES

New York to Chicago

New York to Buffalo

Binghamton to Syracuse

#### THE TWILIGHT No. 5—DAILY

(Diesel-Powered)  
(Via New York Central No. 47-375)

##### SLEEPING CAR

New York to Detroit (Daily except Saturday)

(10 Sec.—3 Double Bedrooms) (Car 50)

##### BUFFET LOUNGE CAR

New York to Binghamton

##### PARLOR CAR (D. L. & W.)

New York to Corning

(Drawing Room) (Car 51)

##### DINING CAR

New York to Binghamton

Detroit to Chicago

##### RECLINING SEAT COACHES

New York to Buffalo

Detroit to Chicago

#### THE WESTERNER No. 7—DAILY

(Diesel-Powered)  
(Via Nickel Plate No. 7)

##### SLEEPING CARS

New York to Chicago

(10 Roomettes—6 Double Bedrooms) (Car 70)

New York to Buffalo

(10 Roomettes—6 Double Bedrooms) (Car 71)—  
May be occupied until 8.00 A.M.

##### BUFFET LOUNGE CAR

New York to Scranton

##### DINER LOUNGE CAR

Buffalo to Chicago

##### RECLINING SEAT COACHES

New York to Chicago

New York to Buffalo

Buffalo to Chicago

#### THE OWL No. 15—DAILY

(Diesel-Powered)

##### SLEEPING CARS

New York to Elmira

(10 Roomettes—6 Double Bedrooms) (Car 150)

New York to Syracuse (Daily except Saturday Night)

(10 Sec.—D.R.—2 Double Bedrooms) (Car 152)—  
In No. 1915 from Binghamton

New York to Binghamton

(10 Roomettes—6 Double Bedrooms) (Car 151)—  
May be occupied until 8.00 A.M.

New York to Scranton (Daily except Saturday night)

(12 Sec.—D.R.) (Car 153)—May be occupied until  
8.00 A.M.

Sleeping cars open for occupancy at Hoboken 9.30 P.M.

##### DINER LOUNGE CAR

Binghamton to Buffalo

Binghamton to Syracuse

##### RECLINING SEAT COACHES

New York to Buffalo

Binghamton to Syracuse

### WESTWARD

#### INTERSTATE EXPRESS No. 1301—DAILY

(Via B. & O. Reading Co. and C.R.R. of Pa.)

##### SLEEPING CAR

Philadelphia to Syracuse

(12 Sec.—D.R.) (Car 301)—In No. 1915 from Binghamton—May be occupied at 10.00 P.M.

##### PARLOR-DINING-LOUNGE CAR

Washington to Philadelphia, via B. & O. R.R.

##### DINER LOUNGE CAR

Binghamton to Syracuse

Binghamton to Buffalo

##### RECLINING SEAT COACHES

Washington to Philadelphia

In B. & O. No. 36 from Washington

##### COACHES

Philadelphia to Scranton

In Reading Co. No. 301 from Philadelphia; non air-conditioned

##### RECLINING SEAT COACHES

Binghamton to Syracuse

Binghamton to Buffalo

### EASTWARD

#### POCONO EXPRESS No. 2—DAILY

(Diesel-Powered)

##### SLEEPING CAR

Detroit to New York (Daily except Saturday)

(10 Sec.—3 Double Bedrooms) (Car 440) via New York Central No. 44. Car may be occupied at Buffalo at 11.00 P.M.

##### SLEEPING CAR

Buffalo to New York

(10 Sec.—3 Double Bedrooms) (Car 440) (Daily except Sat. night—Sun. morning) from N. Y. C. No. 44. Car may be occupied at Buffalo at 11.00 P.M.

##### DINER LOUNGE CAR

Elmira to Binghamton

##### DINING CAR

Binghamton to New York

##### RECLINING SEAT COACHES

Buffalo to New York

#### THE PHOEBE SNOW No. 6—DAILY

(A Streamlined Train)

##### TAVERN LOUNGE CAR (D. L. & W.)

Buffalo to New York

(Open to all passengers)

##### PARLOR CAR (D. L. & W.)

Buffalo to New York

(Drawing Room) (Car 61)

##### DINING CAR

Buffalo to New York

##### BUFFET LOUNGE CAR

Syracuse to Binghamton

##### RECLINING SEAT COACHES

Buffalo to New York

Syracuse to Binghamton

### EASTWARD

#### THE NEW YORKER No. 8—DAILY

(Diesel-Powered)  
(Via Nickel Plate No. 8)

##### SLEEPING CARS

Chicago to New York

(10 Roomettes—6 Double Bedrooms) (Car 80)

Buffalo to New York

(10 Roomettes—6 Double Bedrooms) (Car 83)—  
Open for occupancy at 9.00 P.M.

Elmira to New York

(10 Roomettes—6 Double Bedrooms) (Car 84)

Open for occupancy at 9.30 P.M.

Syracuse to New York (Daily except Saturday night),

(10 sec.—D.R.—2 Double Bedrooms) (Car 85)—In  
1910 to Binghamton.

Sleeping cars may be occupied at Hoboken until 8.00 A.M.

##### DINER LOUNGE CAR

Chicago to Buffalo

##### BUFFET LOUNGE CAR

Syracuse to Binghamton (Open for service 9.00 P.M.)

##### RECLINING SEAT COACHES

Chicago to New York

Buffalo to New York

#### NEW YORK MAIL No. 10—DAILY

(Diesel-Powered)  
(Via Nickel Plate No. 6)

##### SLEEPING CARS

Chicago to New York

(10 Roomettes—6 Double Bedrooms) (Car 60)

Scranton to New York (Daily except Saturday night)

(12 Sec.—D.R.) (Car 102)

Binghamton to New York

(10 Roomettes—6 Double Bedrooms) (Car 100)

Binghamton and Scranton Sleepers are open for occupancy at 9.30 P.M.

Sleeping cars may be occupied at Hoboken until 8.00 A.M.

##### CLUB-DINER-LOUNGE CAR

Chicago to Buffalo

##### BUFFET LOUNGE CAR

Buffalo to Elmira

##### RECLINING SEAT COACHES

Chicago to Buffalo

Buffalo to New York

Syracuse to Binghamton

#### MERCHANTS EXPRESS No. 26—DAILY

Except Sunday and Major Holidays

##### DINER LOUNGE CAR

Scranton to New York

##### RECLINING SEAT COACHES

Scranton to New York

#### INTERSTATE EXPRESS No. 1306—DAILY

(Via C.R.R. of Pa., Reading Co.)

##### SLEEPING CAR

Syracuse to Philadelphia

(12 Sec.—D.R.) (Car 130)—in No. 1910 from Syracuse

##### BUFFET LOUNGE CAR

Syracuse to Binghamton (Open for service 9.00 P.M.)

##### COACHES

Scranton to Philadelphia

In C.R.R. of Pa. No. 306 from Scranton; non air-conditioned

##### RECLINING SEAT COACHES

Syracuse to Binghamton

Buffalo to Binghamton

#### No. 44—DAILY

##### BUFFET LOUNGE CAR

Binghamton to New York

##### RECLINING SEAT COACHES

Binghamton to New York

## CONDENSED TABLE OF CONNECTING TRAINS

### NEW YORK AND BUFFALO, CLEVELAND, DETROIT, CHICAGO AND THE WEST

(For Through Car Service, See Page 2)

TABLE 1 WESTWARD—Read Down				TABLE 2 EASTWARD—Read Down				
	15 Daily	3 Daily	5 Daily	7 Daily	12 Daily	40 Daily	Daily	Daily
	AM	AM	PM	PM	AM	PM	PM	PM
<b>LACKAWANNA RAILROAD</b>								
<b>New York</b>								
Barelay St. (E.T.) Lv	12 43	10 00	4 28	8 00				
Christopher St. (E.T.) Lv		10 03	4 32	8 00				
<b>Hoboken</b> (E.T.) Lv	1 05	10 30	4 50	8 30				
Newark (E.T.) Lv		10 43	5 03	8 44				
Brick Church (E.T.) Lv		10 50	5 10	8 51				
Dover (E.T.) Lv		11 28	5 52	9 32				
Seranton (E.T.) Lv	4 55	1 45	8 10	11 51				
Binghamton (E.T.) Lv	7 05	2 57	9 29	1 05				
Cortland (E.T.) Ar	9 10	4 10						
Syracuse (E.T.) Ar	10 15	5 10						
Norwich (Via Bus See Table 8) (E.T.) Ar	8 35	▲						
Utica (Via Bus See Table 8) (E.T.) Ar	10 05	▲						
Ithaca (Via Bus See Table 10) (E.T.) Ar	9 45	4 45						
Elmira (E.T.) Lv	8 55	4 09	11 05	2 14				
<b>Buffalo</b> (E.T.) Ar	12 50	6 45	2 05	4 45				
<b>NICKEL PLATE</b>								
<b>Buffalo</b> (Lackawanna Terminal) (E.T.) Lv		5	7					
Erie (E.T.) Ar		7 30	5 15					
Ashtabula (E.T.) Ar		9 13	6 43					
East Cleveland (Superior Ave.) (E.T.) Ar		10 15	7 37					
Cleveland (Union Terminal) (E.T.) Ar		11 10	8 30					
Fort Wayne (C.T.) Ar		11 30	8 45					
Chicago (La Salle St. Sta.) (C.T.) Ar		3 20	11 57					
		7 35	3 40					
<b>NEW YORK CENTRAL SYSTEM</b>								
<b>Buffalo</b> (Cent. Term.) (E.T.) Lv		39	47-375	335				
<b>Buffalo</b> (Terrace Sta.) (E.T.) Lv		10 00	○	8 25				
Detroit (E.T.) Ar		2 40	○8 00	1 00				
Ann Arbor (E.T.) Ar			○9 13					
Jackson (E.T.) Ar		4 35	○9 53					
Battle Creek (E.T.) Ar		5 30	○10 40					
Kalamazoo (E.T.) Ar		6 05	○11 03					
Chicago (Central Station) (C.T.) Ar		8 10	○12 45					
<b>NEW YORK CENTRAL SYSTEM—CAN. PAC. R. R.</b>								
<b>Buffalo</b> (Cent. Term.) (E.T.) Lv	379		371	377				
<b>Buffalo</b> (Terrace Sta.) (E.T.) Lv	3 05		4 57	8 50				
<b>Toronto</b> (C.P.R.) (E.T.) Ar	5 20		8 05	11 55				
<b>NEW YORK CENTRAL SYSTEM</b>								
<b>Buffalo</b> (Cent. Term.) (E.T.) Lv	43	5	19	35				
Cleveland (E.T.) Ar	1 14	8 15	2 27	7 50				
Toledo (E.T.) Ar	5 20	12 13	5 47	11 05				
Chicago (La Salle St. Sta.) (C.T.) Ar	7 57	2 55	8 15	1 30				
	12 30	6 55	11 59	5 00				
<b>NEW YORK CENTRAL SYSTEM</b>								
<b>Buffalo</b> (Cent. Term.) (E.T.) Lv		15	35-433					
Cleveland (E.T.) Lv		11 59	7 50					
Cincinnati (E.T.) Ar		8 35	12 30	6 45				
<b>NEW YORK CENTRAL SYSTEM</b>								
<b>Buffalo</b> (Cent. Term.) (E.T.) Lv	43-427	5-41	11	35-407				
Cleveland (E.T.) Lv	1 14	8 15	2 57	7 50				
Indianapolis (C.T.) Ar	8 35	2 18	6 15	12 20				
St. Louis (C.T.) Ar	1 50	6 35	10 45	5 35				
	8 00	11 25	3 45	11 00				
	AM	AM	PM	PM				

#### EXPLANATION OF REFERENCE MARKS

A.M., light type. P.M. heavy type. E.T.—Eastern Time. C.T.—Central Time. # Through Sleeper on N.Y.C. No. 44 from Detroit runs on D. L. & W. No. 2 from Buffalo—passengers desiring to connect with D. L. & W. No. 8 from Buffalo should transfer at Terrace Station. ▲Chenango Valley Transit Lines bus will wait at Binghamton 15 minutes for connection with train No. 3. Next bus leaves Binghamton at 5.30 P.M., E.S.T.; notify train conductor bus connection is desired. (See Table 8, Page 10.) ★Leaves La Salle Street Station in Chicago. ♦Christopher St. Ferry will not run on Saturdays, Sundays or Major Holidays. (See Hol. Note P. 5.) ○Handles through Pullman passengers only to Detroit; west of Detroit parlor car and reserved seat coaches.

#### PRINCIPAL TICKET, INFORMATION AND PULLMAN OFFICES

	Telephone		Telephone
<b>NEW YORK</b>	General Eastern Passenger Agent's Office 500 5th Ave. (at 42nd Street) Rm. 842 Railroad Ticket Offices: 3 West 47th Street (near Fifth Avenue) 17 John Street (near Broadway) *Evenings, Saturdays, Sundays and Legal Holidays, phone Barelay St. (foot Barelay Street) Christopher Street (near West 10th St.)	Lackawanna 4-0234* PLaza 7-5560-1* COrtlandt 7-0820-1* BARELAY 7-2500 BARELAY 7-2500 BARELAY 7-2500	<b>NEWARK</b> City Ticket Office Griffith Bldg., 605 Broad St., Rms. 502-503 Evenings, Saturdays, Sundays and Legal Hols., phone
<b>HOBOKEN</b>	Lackawanna Terminal	Hoboken 3-2000	<b>SCRANTON</b> Lackawanna Station
			<b>BINGHAMTON</b> Lackawanna Station
			<b>BUFFALO</b> City Ticket Office 11 W. Genesee St. Evenings, Saturdays, Sundays and Legal Holidays, phone
			MARket 3-3440 HUMboldt 2-2100 SERanton 5251 BINGhamton 4-1311 CLEvealand 2488 WASHington 4800

# NEW YORK TO STROUDSBURG, POCONO MOUNTAIN POINTS AND SCRANTON

For condensed time and equipment of trains see pages 2 and 3.

Miles	TABLE 3 WESTWARD—Read Down		15	47	1109 Sun. & Hol. See Note	611 911 Daily See Note	3	11 Daily Ex. Sun. & Hol.	1119 Sun. & Hol. See Note	1121 Sat. Only See Note	1041 Ex. Sat. Sun. & Hol.	929 Sun. & Hol. See Note	635 Ex. Sat. Sun. & Hol.	931 Ex. Sat. Only See Note	5	1129 1131 1073 Daily	649 941 Daily See Note	7	9 Sat. Nite Only
	Daily	Daily	Daily	Daily	Daily	Daily	Daily	Daily	Daily	Daily	Daily	Daily	Daily	Daily	Daily	Daily	Daily	Daily	Daily
<b>NEW YORK</b>																			
	AM	AM	AM	AM	AM	AM	PM	PM	PM	PM	PM	PM	PM	PM	PM	PM	PM	PM	PM
	12 36	7 00				10 03	3 11								4 23			8 03	10 03
	12 47	7 11				10 09	3 15								4 28			8 12	10 02
	12 43	6 58				10 00	3 15								4 28			8 00	9 45
	12 43	7 18				10 03	3 15								4 32			8 00	9 45
1.0	1 05	7 30				10 30	3 35								4 50			8 30	10 25
<b>HOBOKEN (Hudson River)</b>																			
8.8																			
10.0																			
10.6																			
11.0																			
11.6																			
12.5																			
13.2																			
14.1																			
14.9																			
16.2																			
17.8																			
18.8																			
21.1																			
24.5																			
26.5																			
28.7																			
30.8																			
33.0																			
37.3																			
39.1																			
8.6																			
9.2																			
10.3																			
11.6																			
13.2																			
16.1																			
21.5																			
23.9																			
26.1																			
30.2																			
32.2																			
34.9																			
39.1																			
39.1																			
61.7																			
65.8																			
78.2																			
82.6																			
82.6																			
90.2																			
95.6																			
101.3																			
103.6																			
108.6																			
113.9																			
121.5																			
134.1																			
	AM	PM	AM	AM	AM	PM	PM	PM	PM	PM	PM	PM	PM	PM	PM	PM	PM	AM	AM

## How to Reach Lackawanna Terminal, Hoboken

LACKAWANNA TERMINAL, Hoboken, N. J., is conveniently reached via ferry from BARCLAY STREET and CHRISTOPHER STREET (West 10th Street) New York; or via HUDSON TUBES: 33rd Street and 6th Avenue (uptown) and Hudson Terminal Building (Cortlandt Street), (downtown), New York; also

reached via Public Service Bus No. 63 from PUBLIC SERVICE BUS TERMINAL at 260 West 42nd Street, New York (between 7th and 8th Avenues). These three routes offer fast, frequent, and convenient service between Greater New York and Lackawanna Terminal, Hoboken, N. J.

# SCRANTON TO BINGHAMTON, SYRACUSE, ELMIRA AND BUFFALO

For condensed time and equipment of trains see pages 2 and 3.

Miles	TABLE 4 WESTWARD—Read Down		15	1301	47	3	5	7				
			Daily	Daily	Daily	Daily	Daily	Daily	Daily			
		AM	AM	AM	PM	PM	PM	PM				
Wilkes-Barre (Laurel Line).....Lv		3 45		10 45	12 45	5 45 7 15	10 45					
134.1	Seranton.....Lv	4 55	THE OWL Diesel- Powered	THE INTERSTATE EXPRESS See Table 9.	11 50	1 45	8 10	11 51				
141.5	Clarks Summit.....				12 11	2 11	8 10					
145.0	Dalton.....				12 18	2 18	8 10					
147.0	LaPlume.....				12 23	2 23	8 10					
153.1	Nicholson (Tunkhannock Viaduct)				12 36	2 36	8 10					
158.6	Foster.....				12 45	2 45	8 10					
162.9	Kingsley.....	5 51			12 51	2 51	8 10					
172.6	New Milford.....	6 00			1 15	2 15	8 53					
178.5	Hallstead.....	6 20			1 24	2 24	8 53					
192.7	Binghamton (Susquehanna River).....Ar	6 42			2 00	2 00	9 14	12 53				
235.7	Cortland.....Ar	9 10	9 10		4 10							
272.1	Syracuse.....Ar	10 15	10 15		5 10							
287.8	Utica (Via Bus) See Table 8.....Ar	10 05	10 05		▲							
192.7	Binghamton (Susquehanna River).....Lv	7 05			2 57	9 29	1 05					
200.7	Vestal Endicott	7 22			3 08	9 41						
206.6	Apalachin.....	7 28										
213.4	Owego (Susquehanna River).....	7 47			3 25	10 04	11 29					
247.4	Ithaca (Via Bus) See Table 10.....Ar	9 45	9 45		4 45							
221.7	Nichols.....	8 02										
232.0	Waverly (Station for Sayre—Athens).....	8 20			3 46	10 28	1 50					
249.7	Elmira.....Ar	8 38			4 09	10 45	2 08					
259.5	Big Flats.....	8 55			4 09	11 05	2 14					
267.7	Corning (Chemung River).....	9 28			4 30	11 30	2 33					
276.7	Campbell.....											
286.6	Bath (Cohocton River).....	9 58			4 51	11 57						
294.2	Avoca.....	10 08										
302.0	Cohocton.....	10 21										
306.4	Atlanta.....	10 30										
312.3	Wayland.....	10 42										
319.5	Dansville.....	10 59			5 24	12 32						
326.8	Groveland.....	11 23			5 41	12 51	3 36					
333.7	Mount Morris (Genesee River).....	11 35										
340.3	Greigsville.....	11 55										
351.1	B. & O. Jet.....											
355.0	East Bethany.....	11 55										
384.2	Lancaster.....											
396.2	Buffalo.....Ar	12 50			6 45	2 05	4 45					
For Connections West of Buffalo See Table 1, Page 3.		PM	AM	PM	PM	AM	AM					

## EXPLANATION OF REFERENCE MARKS

For Tables 3 and 4.

†—Daily except Sunday.

‡—Sunday only.

A.M. time light type.

P.M. time heavy type.

f—Stops on advance notice to agent or conductor.

j—Stops on notice to conductor to discharge passengers.

m—Stops Friday, Sunday, and Holidays only at Cresco 7:03 P.M., Pocono Summit 7:20 P.M. Friday stops on notice to conductor to discharge passengers from Stroudsburg and east, and on advance notice to agent to receive passengers for Seranton and west; Sunday and Holidays a regular stop. (See Holiday Note.)

t—Stops Jan. 1, May 30, July 4, Sept. 3, Nov. 23 and Dec. 25 only at Henryville 6:52 P.M., and Mt. Pocono 7:16 P.M.

w—Stops Daily at Pocono Summit 11:02 P.M., on notice to conductor to discharge passengers from Dover and east and on advance notice to agent to receive passengers for Buffalo and west.

x—Stops Sundays and Holidays only (See Holiday Note.) at Tobyhanna 7:26 P.M., Gouldsboro 7:32 P.M., Moscow 7:40 P.M.

z—Stops regularly to receive passengers.

▲—Chenango Valley Transit Lines bus between Binghamton and Utica will wait at Binghamton 15 minutes for connection with train No. 3. Next bus leaves Binghamton at 5:30 P.M. E.S.T.; notify train conductor bus connection is desired. (See Table 8, Page 10.)

◆—Christopher St. Ferry will not run on Saturdays, Sundays or Major Holidays. (See Hol. Note.) The daily checking and delivery of baggage at Christopher Street, New York Station is discontinued. Baggage may be checked or delivered daily at Barclay Street, New York, Station.

Holidays—The term holidays used in these timetables applies to New Year's Day, Memorial Day, Independence Day, Labor Day, Thanksgiving, and Christmas Day.

## THE PHOEBE SNOW

For a DAYLIGHT TRIP between NEW YORK and BUFFALO

**THE OBSERVATION LOUNGE CAR, open to all passengers,** is of the latest design and equipped with a refreshment bar and other conveniences that add to the pleasure of your trip aboard THE PHOEBE SNOW.

**THE NEW SPACIOUS DINING CAR** offers a *setting of beauty* . . . for the enjoyment of appetizing meals served by courteous, carefully-trained and experienced personnel.

**THE NEW STREAMLINED COACHES** are equipped with sponge-rubber cushioned seats. At the touch of your hand they

recline to any desired position, so that you can read . . . rest . . . or enjoy through wide panoramic windows some of America's most idyllic scenery east of the Rockies. Convenient, spacious overhead racks are provided for your luggage. New travel comfort and enjoyment await you on THE PHOEBE SNOW.

For **PULLMAN TRAVEL** New York to Chicago, THE PHOEBE SNOW provides a modern, all-private-room sleeping car with 10 roomettes for single occupancy and 6 double bedrooms—newest Pullman accommodations to assure you comfort and a restful night's sleep.

# BUFFALO, ELMIRA, SYRACUSE AND BINGHAMTON TO NEW YORK

For condensed time and equipment of trains see pages 2 and 3.

Miles	TABLE 5 EASTWARD—Read Down		2	6	NB	10	1306	8
			Daily	Daily	44	Daily	Daily	Daily
			AM	AM	PM	PM	PM	PM
For connections from the West see Table 2, page 3.								
0.0	Buffalo	Lv	4 25	10 15		5 45		11 00
12.0	Lancaster					5 03		
41.2	East Bethany					5 29		
45.1	B & O, Jct.					6 35		
55.9	Greigsville							
62.5	Mount Morris (Genesee River)		5 32	11 14		7 05		12 03
69.4	Groveland					7 15		
76.7	Dansville		5 51	11 31		7 40		12 20
83.9	Wayland					7 55		
89.8	Atlanta					8 02		
94.2	Cohocton					8 11		
102.0	Avoca					8 22		
109.6	Bath (Cohocton River)		6 37	12 04		8 43		12 56
119.5	Campbell							
128.5	Corning (Chemung River)		7 12	12 26		9 10		1 15
136.7	Big Flats							
146.5	Elmira	Ar	7 40	12 49		9 29		1 33
164.2	Waverly (Sta. for Sayre-Athens)	Lv	7 45	12 49		9 55		1 38
174.5	Nichols		8 06	1 09		10 18		1 58
			8 18			10 30		
216.8	Ithaca (Via Bus) See Table 10	Lv		11 25				
182.8	Owego (Susquehanna River)	Lv	8 38	1 32		10 45		
189.6	Apalachin		8 48					
195.5	Vestal		9 00	1 48		11 08		
203.5	Binghamton (Susq. River)	Ar	9 11	2 08		11 23		2 38
	Utica (Via Bus) See Table 8	Lv		10 30		5 55	5 55	
	Syracuse	Lv		11 30		9 20	9 20	9 20
	Cortland	Lv		12 33		10 25	10 25	10 25
203.5	Binghamton (Susq. River)	Lv	9 23	2 08	5 45	11 59	12 20	2 45
217.7	Hallstead		9 38					
223.6	New Milford		9 49					
233.3	Kingsley							
237.6	Foster							
243.1	Nicholson (Tonkhanook Viaduct)							
249.2	LaPlume							
251.2	Dalton							
254.7	Clarks Summit		e10 25					
262.1	Seranton	Ar	10 38	3 15	w6 50	1 15		3 52
	Wilkes-Barre (Laurel Line)	Ar	11 40	4 10	7 40	3 10		4 40
			AM	PM	PM	AM	AM	AM

## Transferring Luggage and Passengers Between Depots in Chicago

Passengers holding tickets through Chicago may deliver their hand luggage to the Parmelee desk at the **incoming** depots for delivery to the parcel checking rooms of the **outgoing** depots at the cost of only the usual parcel checking fees.

The Parmelee transfer coupons — included as part of your through ticket — also entitle you to the choice of transfer service in Parmelee limousine from your incoming depot to your outgoing depot, or to any hotel or other destination in downtown Chicago.

**Ask any Ticket Agent for details**

### EXPLANATION OF REFERENCE MARKS

For Tables 5 and 6.

†—Daily except Sunday.

§—Sunday only.

A.M. time in light type.

P.M. time in heavy type.

c—Stops regularly to discharge passengers.

d—Stops Sunday and Monday Morning only, at Cresco 5:01 A.M.

e—Regular stop daily except Sunday and holidays. Sunday and holidays stops only on signal. (See Holiday Note.)

f—Stops on advance notice to Agent or conductor.

j—Stops on notice to conductor to discharge passengers.

m—Stops on notice to conductor to discharge passengers from points west of Dover.

r—Stops on advance notice to Agent to receive passengers for Newark and New York.

t—On Sunday and Holidays train leaves Dover at 6:51 A.M.

w—Train No. 44 will stop at Scranton and Stroudsburg on weekdays to receive passengers (except Mondays, December 25 and January 1); also, will stop to receive passengers Sundays, December 24 and December 31. No. 44 stops at Scranton and Stroudsburg to discharge passengers daily.

♦—Christopher St. Ferry will not run on Saturdays, Sundays or Major Holidays. (See Hol. Note.) The daily delivery and checking of baggage at Christopher Street, New York Station is discontinued. Baggage may be delivered or checked daily at Barclay Street, New York, Station.

NB—Will not carry checked baggage.

Holidays: The term holidays used in these tables applies to New Year's Day, Memorial Day, Independence Day, Labor Day, Thanksgiving, and Christmas Day.

## "The Story of Phoebe Snow"

Says Phoebe Snow: "It's grand to go  
On trips . . . without a care.  
My Lackawanna Diesel trains  
Will get you safely there.  
When traffic's bad and weather's worse,  
You're spared all nervous strain,  
You're cozy and relaxed,  
Aboard a Lackawanna train!"

An attractive brochure, "The Story of Phoebe Snow", has been issued by the Lackawanna Railroad. For your copy giving the history of Phoebe Snow, original Phoebe Snow jingles together with recent jingles coined during World War II, and Phoebe's recent praises of Lackawanna's train named in her honor . . . call at the office of any Traffic Representative listed in this timetable.

# SCRANTON, POCONO MOUNTAIN POINTS AND STROUDSBURG TO NEW YORK

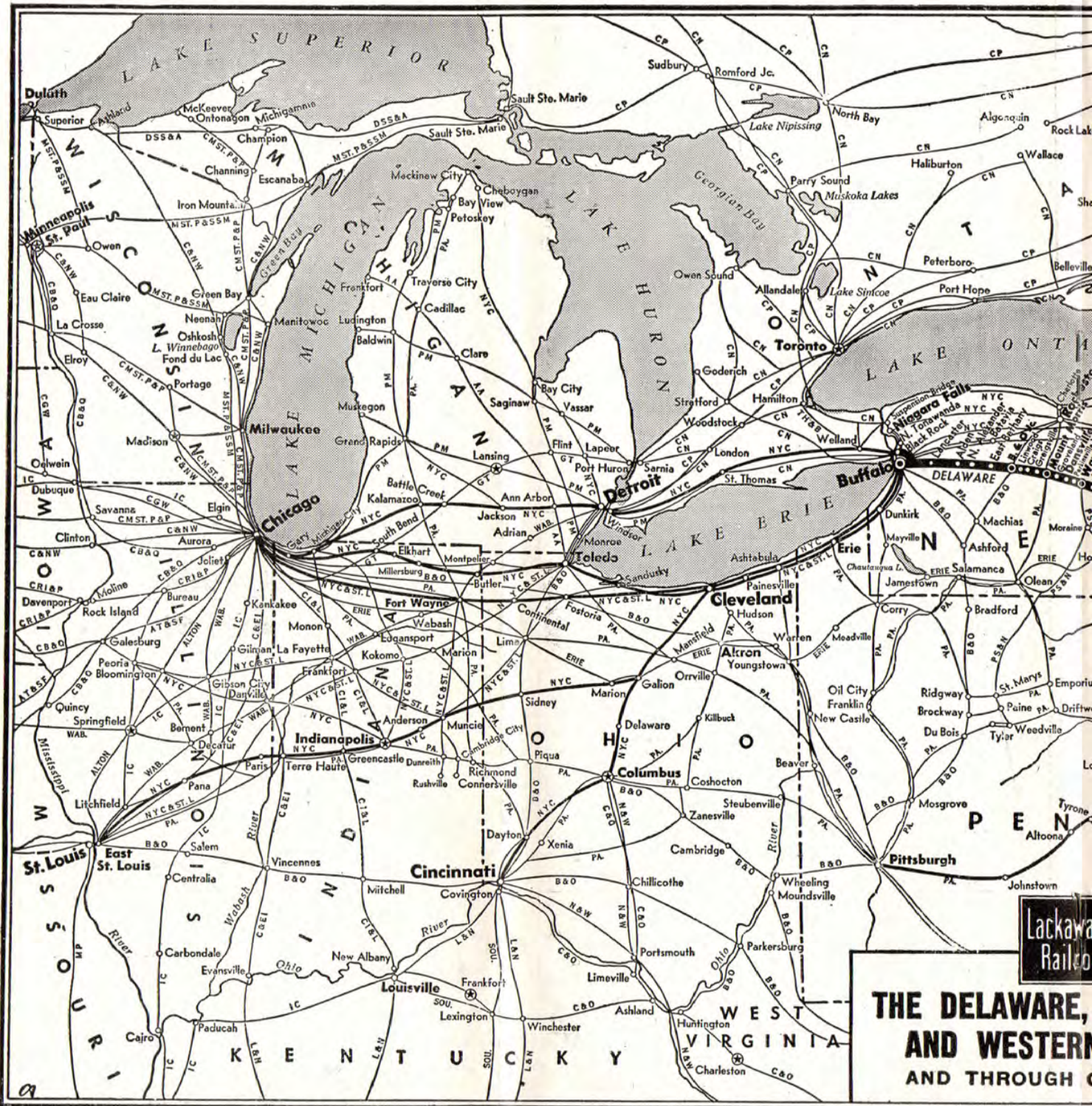
For condensed time and equipment of trains see pages 2 and 3.

Stations	TABLE 6 EASTWARD—Read Down		10 Daily	8 Daily	1104 Sat. Sun. & Hol. See note	1010 Ex. Sun. & Hol. See note	602 906 Daily See Note	26 Ex. Sun. & Hol. Seenoote	614 918 Ex. Sun. & Hol. See note	2 Daily	1114-16 Sat. Sun. & Hol. See Note	1030 Ex. Sat. Sun. & Hol. See Note	6 Daily	1124 Sat. Sun. & Hol. See Note	1054 Ex. Sat. Sun. & Hol. See Note	934 Sat. Sun. & Hol. See Note	634 Ex. Sat. Sun. & Hol. See note	24 Sun. Only See Note	940 Sun. Only See Note	1128 Sun. Only See Note	NB 44 Daily	
		PM	AM	AM	AM	AM	AM	AM	AM	AM	PM	PM	PM	PM	PM	PM	PM	PM	PM	PM	PM	PM
..... Wilkes-Barre (Laurel Line)..... Lv	11 45	3 15						6 10		9 45												15 45
262.1 Scranton..... Lv	1 30	4 02						7 15		10 50												17 00
274.7 Moscow.....								7 37		11 13												
282.3 Gouldsboro.....								7 49		11 27												
287.6 Tobyhanna.....								7 56		11 36												
292.6 Pocono Summit (Sta. for Pocono Mnr., Pocono Crest, and Split Rock Lodge).								8 05		11 45												
294.9 Mount Pocono.....								8 10		11 53												
300.6 Cresco (Station for Skiptop, Canadensis, Buck Hill Falls, Mountainhome, So. Sterling, Paradise Falls)								8 21		12 07												
306.0 Henryville.....								8 29														
313.6 Stroudsburg & East Stroudsburg )	Ar	3 20	5 17					8 39		12 32												
318.0 Delaware Water Gap (Delaware River)	Lv	3 25	5 20					8 42		12 37												
330.4 Blainstown.....								8 44		12 44												
334.5 Johnsonburg.....								8 45		1 00												
357.1 Dover..... Ar	4 25	6 19						8 57		1 30												
357.1 Dover..... Lv	4 25																					
361.3 Denville.....																						
364.0 Mountain Lakes.....																						
366.0 Boonton.....																						
370.1 Towaco.....																						
372.3 Lincoln Park.....																						
374.7 Mountain View.....																						
380.1 Paterson (Passaic River).....																						
383.1 Athenia.....																						
384.6 Passaic.....																						
385.9 Delawanna.....																						
387.0 Lyndhurst.....																						
387.7 Kingsland.....																						
357.1 Dover..... Lv		6 19																				
361.3 Denville.....																						
365.6 Morris Plains.....																						
367.8 Morristown.....																						
369.9 Convent.....																						
372.1 Madison.....																						
374.1 Chatham.....																						
377.5 Summit.....																						
379.8 Short Hills.....																						
380.8 Millburn.....																						
382.4 Maplewood.....																						
383.7 South Orange.....																						
384.5 Mountain Station.....																						
385.4 Highland Avenue.....																						
386.1 Orange.....																						
387.0 Brick Church.....																						
387.6 East Orange.....																						
388.0 Grove Street.....																						
388.6 Roseville Avenue.....																						
389.8 Newark (Passaic River).....																						
395.2 HOBOKEN (Hudson River).....																						
396.2 NEW YORK																						
D. L. & W. Ferris—																						
Christopher St.↓																						
Barelay St.....																						
Hudson Tubes (Fare 15c)																						
33rd St. & 6th Ave.....																						
Hudson Term. Bldg.—Cortlandt St.																						

## AUTUMN DAYS

Vacation days are never more inviting than in the **Poconos** during Autumn. Here in the lazy days of Indian Summer, with all the grandeur of nature, amid friendly surroundings—you can enjoy rest and relaxation . . . days of sports and activities

as well as interesting programs of nightly entertainment. Plan now to spend a weekend in the Poconos. The Poconos are less than three hours' ride from New York. Consult Lackawanna Ticket Agent.






**Lackawanna  
Railroad**

**THE DELAWARE,  
AND WESTERN  
AND THROUGH**

**LACKAWANNA RAILROAD — The Shortest Route between**



### LACKAWANNA CONNECTIONS INTO NEW YORK CITY

Lackawanna Ferries   
 Hudson Tunnels   
 Subways 

RUNNING TIME FROM LACKAWANNA TERMINAL, HOBOKEN  
 To 33rd St. and 6th Ave. .... 14 minutes  
 To Hudson Terminal, Cortland St. 9 minutes  
 By Hudson River Ferries ..... 12 minutes



**Lackawanna**  
**Railroad**  
**CONNECTIONS**

J. W. CLEMENT CO. BUFFALO, N. Y.

**Between New York — Scranton — Binghamton — Syracuse — Elmira — Buffalo**

**BINGHAMTON AND SYRACUSE (SYRACUSE—OSWEGO SERVICE)**

Read Down		See Bus Note Below*		Read Up	
3 Daily	15 Daily	Miles	TABLE 7	6 Daily	10 Daily
AM	AM			PM	AM
10 03	12 36		Hudson Tubes—(Fare 15c)	6 51	5 59
10 09	12 47		Lv 33rd St. & 6th Ave. . . . . Ar	6 44	5 56
			Hudson Term. Bldg.—Cortlandt St.		7 49
			<b>D. L. &amp; W. Ferries—</b>		
10 00	12 43		Barelay St. . . . . Ar	6 55	5 55
10 03			Christopher St. . . . .	6 46	5 52
10 30	1 05	1.0	Hoboken . . . . .	6 30	5 30
10 43			Newark . . . . .	6 16	5 16
10 50			Brick Church . . . . .	6 07	5 07
11 28			Dover . . . . .	5 29	4 25
1 45	4 55		Scranton . . . . .	3 15	1 15
2 57	6 20		Binghamton . . . . . Lv	2 08	11 59
			Lv . . . . . Binghamton . . . . . Ar	1 30	11 30
3 05	8 00	192.7	Chenango Bridge . . . . .		11 13
a	a	203.7	Chenango Forks . . . . .		11 06
3 33	8 31	213.1	Whitney Point . . . . .	1 03	11 55
a	a	215.3	Lisle . . . . .		11 52
a	a	218.9	Killawog . . . . .		11 48
3 46	8 45	221.9	Marathon . . . . .	12 50	11 44
a	a	232.1	Blodgett Mills . . . . .		11 31
4 10	9 10	235.7	Cortland . . . . .	12 33	11 25
4 15	9 16	238.3	Homer . . . . .	12 19	11 15
4 31	9 32	250.0	Tully . . . . .	12 04	11 59
a	a	252.2	Apulia . . . . .		11 55
4 52	9 58	265.4	Jamesville . . . . .	11 43	11 34
5 10	10 15	272.1	Syracuse . . . . . Lv	11 30	9 20
PM	AM			AM	PM

**\*SYRACUSE AND OSWEGO MOTOR LINES, INC.**

Daily Bus Service Between Syracuse, Baldwinsville, Fulton, Minetto and Oswego

Syracuse and Oswego Motor Lines, Inc. operate frequent bus service between Syracuse and Oswego and intermediate points, providing convenient connections with Lackawanna trains at Syracuse. Bus Terminals are located at 226 West Genesee St., Syracuse, N. Y. (four and a half short blocks from Lackawanna station) and at East First St., Oswego, N. Y. No through rail tickets sold, or baggage checked, beyond Syracuse.

**BINGHAMTON AND UTICA\***

Read Down		Read Up			
3 Daily	15 Daily	Miles	TABLE 8	6 Daily	10 Daily
AM	AM			PM	AM
10 03	12 36		Hudson Tubes—(Fare 15c)	6 51	5 59
10 09	12 47		Lv 33rd St. & 6th Ave. . . . . Ar	6 44	5 56
			Hudson Term. Bldg.—Cortlandt Street		7 49
			<b>D. L. &amp; W. Ferries—</b>		
10 00	12 43		Barelay St. . . . . Ar	6 55	5 55
10 03			Christopher St. . . . .	6 46	5 52
10 30	1 05	1.0	Hoboken . . . . .	6 30	5 30
10 43			Newark . . . . .	6 16	5 16
10 50			Brick Church . . . . .	6 07	5 07
11 28			Dover . . . . .	5 29	4 25
1 45	4 55		Scranton . . . . .	3 15	1 15
2 57	6 20		Binghamton . . . . . Lv	2 08	11 59
			Lv . . . . . Binghamton . . . . . Ar	1 20	11 30
3 00	7 15	192.7	Chenango Forks . . . . .	12 55	11 47
3 25	7 40	203.7	Greene . . . . .	12 40	11 32
3 40	7 55	211.7	Brisben . . . . .	12 30	11 22
3 50	8 05	217.6	Oxford . . . . .	12 15	11 07
4 05	8 20	225.7	Norwich . . . . .	12 00	10 52
4 20	8 35	233.9	Galena (North Norwich) . . . . .	11 50	10 44
4 30	8 45	239.6	Sherburne . . . . .	11 40	10 36
4 45	8 55	245.0			10 30
		250.1	Earlville . . . . .		10 20
5 05	9 10	256.8	Hubbardsville . . . . .	11 25	10 15
5 10	9 15	260.7	North Brookfield . . . . .	11 20	10 10
5 20	9 30	266.3	Waterville . . . . .	11 05	10 00
5 30	9 40	270.6	Paris . . . . .	10 55	9 50
5 45	9 55	283.7	New Hartford . . . . .	10 40	9 40
5 55	10 05	287.8	Ar, Utica Bus Terminal (Genesee St.) . . . . . Lv	10 30	9 30
PM	AM		UTICA	AM	PM

**\*TRAIN—BUS SERVICE.** Coordinated train and bus schedules as shown under table 8 are furnished only for information of the public. Buses are operated by Chenango Valley Transit Lines and leave from and arrive at D. L. & W. Station, Binghamton, N. Y. No through rates are published with Chenango Valley Transit Lines.

**SYRACUSE, BUFFALO, BINGHAMTON, PHILADELPHIA, ATLANTIC CITY, BALTIMORE AND WASHINGTON**

Read Down		Read Up	
1910 Daily	TABLE 9	1915 Daily	
PM		AM	
9 20	Lv . . . . . Syracuse . . . . . Ar	10 15	
9 59	Tully . . . . .	9 32	
10 15	Homer . . . . .	9 16	
10 25	Cortland . . . . .	9 10	
10 44	Marathon . . . . .	8 45	
10 55	Whitney Point . . . . .	8 31	
11 30	Binghamton . . . . . Lv	8 00	
		15 Daily	
		PM	
5 45	Lv . . . . . Buffalo . . . . . Ar	12 50	
9 10	Corning . . . . .	9 28	
9 55	Elmira . . . . .	8 38	
11 23	Binghamton . . . . . Lv	7 05	
		1301 Daily	
		AM	
12 20	Lv . . . . . Binghamton . . . . . Ar	6 42	
	Scranton . . . . . Lv		
		301 Daily	
		AM	
1 35	Lv . . . . . Scranton . . . . . Ar	5 33	
2 54	Wilkes-Barre . . . . . Lv	4 33	
4 48	Mauch Chunk . . . . .	2 16	
5 29	Allentown . . . . .	1 15	
6 06	Bethlehem . . . . . Lv	12 48	
		11153	
d7 11	Ar . . . . . Lansdale . . . . . Lv		
7 46	Wayne Jet . . . . .		
8 00	Ar . . . . . Philadelphia . . . . . Lv	11 15	
	(Reading Terminal)		
		1026 Daily	
		PM	
8 25	Lv . . . . . Philadelphia . . . . . Ar	7 30	
	(Broad St. Station)		
10 05	Ar . . . . . Atlantic City . . . . . Lv	6 00	
		36 Daily	
		AM	
		6 15	
		PM	

For Equipment on Interstate Express shown above, see Trains Nos. 1301 and 1306, Page 2. (No coaches between Scranton and Binghamton)

**EXPLANATION OF REFERENCE MARKS FOR TABLES 7, 8 AND 9**

A.M. time light type. P.M. time heavy type. †—Daily except Sunday. ‡—Daily except Saturday. a—Stops on notice to Conductor to discharge passengers holding tickets from Scranton and east and from Elmira and west. d—Stops to discharge passengers from points beyond Bethlehem. e—Stops daily on notice to Conductor to discharge passengers holding tickets from Scranton and east and Elmira and west, Sundays stops on signal to receive or discharge passengers. f—Stops on advance notice to Agent or Conductor. g—Stops Sundays only to receive or discharge passengers. h—Stops on signal to receive passengers for Scranton and east, and Elmira and west, providing Agents are notified in advance. j—Stops to pick up sleeping car passengers only upon advance notice. †—Christopher St. Ferry will not run on Saturdays, Sundays or Major Holidays. (See Hol. Note P. 5.) The daily delivery and checking of baggage at Christopher Street, New York station is discontinued. Baggage may be checked or delivered at Barclay Street New York station.

**NEW YORK AND ITHACA, VIA OWEGO**

Read Down			Read Up		
3 Daily	15 Daily	Miles	TABLE 10		6 Daily
AM	AM		New York		PM
10 03	12 36		Hudson Tubes— (Fare 15c) Lv... 33rd St. & 6th Ave... Ar		6 51
10 09	12 47		Hud. Term Bldg., Cortlandt St.		6 44
10 00	12 43		D. L. & W. Ferries— Barclay Street		6 55
10 03			Christopher Street		6 46
10 30	1 05	1.0	Hoboken		6 30
10 43		8.8	Newark		6 16
10 50		11.6	Brick Church		6 07
11 03		21.1	Summit		5 54
11 28		39.1	Dover		5 29
	11 15		Lv. Philadelphia (Read. Co.) Ar		
1 45	4 55	134.1	Lv. Scranton		3 15
2 57	7 05	192.7	Binghamton		2 08
3 25	7 47	213.4	Ar. Owego		1 32
Bus	Bus				Bus
3 35	8 30	213.4	Lv. Owego		12 45
3 50	8 50	218.8	Catatonk		12 35
4 09	9 00	224.1	Candor		12 25
4 10	9 10	229.4	Wilseyville		12 15
4 40	9 40	246.3	Ar. Ithaca (Aurora St. Bus Term.)		11 45
4 45	9 45	247.4	Ar. Ithaca (D. L. & W. Station)		11 25

**To Our Patrons . . .**

All forms of railroad tickets reading via the D. L. & W. R. Co. will be honored via the L. D. Dickinson Motor Coach Lines between Owego and Ithaca or intermediate stations on the connecting bus schedule shown herein. Hand baggage may be checked through to destination. Trunks and other bulky baggage will be checked to and from Owego only.

**NEW YORK AND BUSHKILL**

**TRAIN-BUS SCHEDULE**

Read Down		TABLE 11		Read Up	
3 Ex. Sat. Sun. & Hol.		44 Ex. Sat. Sun. & Hol.			
AM	NEW YORK	PM			
10 00	D. L. & W. Ferries— Lv. Barclay St.	10 40			
10 03	Christopher St.				
10 30	Hoboken	10 25			
12 21	Ar. Stroudsburg & E. Stroudsburg	8 25			
	Bus Del. Valley Trans. Co.	Bus			
5 00	Lv. { Stroudsburg and East (Stroudsburg (DL&W Sta.))	6 15			
5 20	Marshall's Creek	6 00			
5 25	Echo Lake	5 50			
5 30	Bushkill	5 45			
▲ 5 38	Ar. Tamiment	▲ 5 38			

**NEW YORK, BUFFALO AND NIAGARA FALLS**

**TRAIN-BUS SCHEDULE**

Read Down			TABLE 12			Read Up		
7 Daily	3 Daily	15 Daily	6 Daily	10 Daily	8 Daily			
8 00	10 00	12 43	6 55	5 55	7 55			
8 30	10 30	1 05	6 46	5 30	7 52			
4 45	6 45	12 50	6 39	5 30	7 30			
			10 15	5 45	11 00			
			Bus	Bus	Bus			
6 55	7 10	1 00	9 40	5 25	10 50			
	8 35	2 15	8 30	4 10	9 35			

**EXPLANATION OF REFERENCE MARKS FOR TABLES 10, 11, 12, 13, 14 AND 15**

A. M. time light type. P. M. time heavy type. †—Daily except Sunday. ‡—Sunday only. †—Christopher Street Ferry will not run on Saturdays, Sundays or Major Holidays. (See Holiday Note Page 5.) ‡—Arrives Pennsylvania Station (30th St.) a—Stops Friday, Sunday and Holidays only at Cresco 7:03 P.M., Pocono Summit 7:20 P.M. On Fridays stops on notice to conductor to discharge passengers for Stroudsburg and East, and on advance notice to Agent to receive passengers for Scranton and West; Sunday and Holidays a regular stop. (See Holiday note page 5). c—Stops Daily at Pocono Summit 11:02 P.M., to discharge passengers from Newark and on advance notice to agent to receive passengers for Buffalo and west. d—Stops at Cresco Sunday and Monday only at 5:01 A.M.

**BUFFALO, ELMIRA, SYRACUSE, BINGHAMTON, SCRANTON, POCONO MOUNTAIN POINTS, PHILADELPHIA, BALTIMORE AND WASHINGTON VIA NEWARK**

Read Down			TABLE 13			Read Up		
7 Daily	5 Daily	11 Ex. Sun. & Hol.	3 Daily	8 Daily	26 Ex. Sun. & Hol.	2 Daily	6 Daily	
4 10	1 00	12 00	5 05	11 45	2 40	6 45	10 25	
4 52	1 45	12 41	5 50	11 00	1 52	6 03	9 42	
5 54	2 50	1 44	7 00	9 41	11 47	4 51	8 39	
6 23	3 23	2 13		9 10	12 07	4 14	8 10	
7 00	4 03			8 31	11 33	3 36	7 33	
7 44	4 49	3 29	9 05	7 45	10 45	2 45	6 45	
7 00	3 00	2 00	8 05					
7 04	3 04	2 04	8 10					
7 39	3 39	2 39	8 46					
8 24	4 21	3 23	9 36					
8 44	5 03	3 49	10 43					
10 20	6 03	4 38	12 21					
10 45	a	6 08	12 44					
11 39	7 58	7 15	1 02					
12 53	9 14		2 57					
			4 45					
			5 10					
2 08	10 45		4 09					
4 45	2 05		6 45					

**STROUSBURG, PORTLAND, DELAWARE, PHILLIPSBURG AND PHILADELPHIA**

585 Sun. & Hol.		TABLE 14		586 Sun. & Hol.	
AM	NEW YORK	AM		PM	
8 05	Lv. P. R.R. Philadelphia	8 05		48 10	
10 36	Broad Street Station	10 36		5 49	
11 15	P. R.R. Phillipsburg	11 15		7 10	
11 20	Delaware	11 20		5 04	
11 31	Portland	11 31		4 54	
11 40	Delaware Water Gap	11 40		4 45	
AM	Ar. Stroudsburg & E. Stroudsburg	AM		PM	

**SCRANTON, BERWICK AND SUNBURY**

**TRAIN-BUS SCHEDULE**

Read Down			TABLE 15			Read Up		
5 Daily	3 Daily	15 Daily	10 Daily	26 Ex. Sun. & Hol.	6 Daily	44 Ex. Sun. & Hol.		
4 28	10 00	12 43	5 55	10 55	6 55	10 40		
4 32	10 03	1 05	5 30	10 58	6 46	10 25		
4 50	10 30		5 30	10 35	6 30	10 12		
5 03	10 43		5 25	10 20	6 16	10 07		
5 10	10 50		5 20	9 37	5 29	9 16		
5 52	1 28	4 27	1 30	7 15	3 15	7 00		
7 58	1 45		Bus	Bus	Bus	Bus		
8 15	3 15	6 15	12 45	5 45	1 30	6 25		
10 05	5 00	8 00	10 57	4 01	11 40	4 35		
10 28	5 23	8 23	10 35	3 38	11 17	4 12		
10 45	5 40	8 40	10 19	2 21	11 00	3 55		
11 05	6 00	9 00	10 00	2 01	10 40	3 50		
11 10	6 05	9 05	9 55	2 55	10 35	3 30		

## GENERAL INFORMATION

**RESPONSIBILITY**—This time table is furnished to the public as a matter of information only. The company is not responsible for errors therein, inconvenience or damage resulting from delayed trains or failure to make connections, or for shortage of equipment. The schedules and equipment shown herein are subject to change without notice.

**CHILDREN**—Under five years of age carried free, when accompanied by parent or guardian; five years of age and under 12, one-half fare; 12 years of age or over, full fare.

**ADJUSTMENT OF FARES**—In case of dispute with conductors or agents, passengers should pay the fare required, take a receipt, and communicate with the General Passenger Agent, 140 Cedar Street, New York 6, New York.

Passengers leaving train short of destination of the ticket should have the conductor make endorsement on the ticket to that effect.

**REDEMPTION OF TICKETS**—Tickets unused or partly used will be redeemed under tariff regulations by the General Passenger Agent, 140 Cedar Street, New York 6, New York.

**ARTICLES LOST**—When articles are lost on trains or left at stations, owners should immediately apply to Agent at station where they leave train, or address Manager Mail, Express, Baggage and Milk Traffic, Lackawanna Terminal, Hoboken, N. J., giving full description of property, stating date of loss and train number.

### BAGGAGE—

(a) 150 pounds of baggage, not exceeding \$100.00 in value, will be checked free on each adult ticket, and 75 pounds, not exceeding \$50.00 in value, on each child's ticket. Excess charge will be collected for excess weight and excess value, but no piece of baggage exceeding

300 pounds in weight (except immigrant baggage checked at port of landing), or single shipment exceeding \$2,500 in value will be accepted for checking.

(b) This Company cannot guarantee to forward baggage on same train with passenger; and when necessary, will forward it on other trains.

(c) Baggage checked to New York City will be forwarded to Barclay Street Station.

(d) No baggage will be checked or delivered at the Christopher Street, New York Station. Baggage may be checked or delivered daily at Barclay Street, New York Station.

(e) Baggage Delivery Service—Arrangements can be made at the time of checking baggage for delivery to residence, hotel or other point in New York City, Newark, Buffalo, and other important cities.

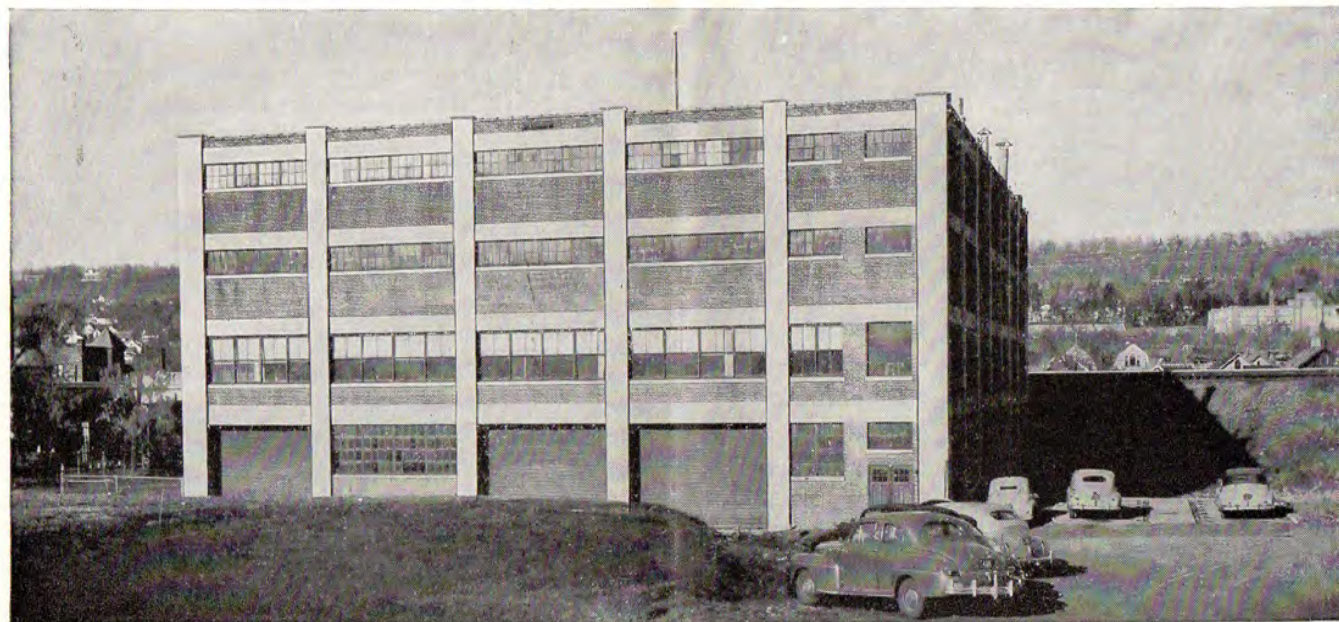
(f) Storage will be charged on each piece of baggage remaining at stations over 24 hours, except that certain concessions will be allowed for Saturdays, Sundays and holidays.

(g) Baggage for stations where there is no agent must be claimed at the baggage car door immediately upon arrival at that station; otherwise it will be carried to first station where agent is on duty and held for further orders.

(h) Parcel Rooms will be found at the principal stations, where packages, hand baggage, etc., may be checked and cared for at a nominal charge.

**STOP-OVERS**—Practically all tickets permit stop-overs within limit at any station en route on application to Conductor.

For further detailed information consult Ticket Agent.



### FOR SALE OR LEASE MANUFACTURING PLANT, ORANGE, N. J.

Modern 4-Story Reinforced Fireproof Building 64,400 sq. ft.—Land Area 1.42 Acres—Bays 20' x 20'—2 Elevators—200 lbs. Floor Load—Automatic Sprinklers—D. L. & W. Side Track—All City Utilities—Power 440 Volts-60 Cycle, 3 Phase.

For further detailed information regarding this property and other sites, telephone or write

L. E. TENNEY, Manager Commercial Development, Lackawanna Railroad  
140 CEDAR STREET, NEW YORK 6, N. Y. Telephone: BArcley 7-2500



STATION INDEX	Table No.	Table No.	Table No.	Table No.	
A					
†Ackermanville, Pa.		Delawanna, N. J.	3, 6	LaPlume, Pa.	4, 5
†Alden, N. Y.		Delaware, N. J.	14	†Lehigh, Pa.	
†Alford, Pa.		Delaware Water Gap, Pa.	3, 6, 14	†Leicester, N. Y.	
Allentown, Pa.	9	Denville, N. J.	3, 6	†Lime Ridge, Pa.	
×Ampere, N. J.		†Depew, N. Y.		Lincoln Park, N. J.	3, 6
†Anatomick, Pa.		Detroit, Mich.	1, 2	†Linwood, N. Y.	
▲Andover, N. J.		†Dover, N. J.	3, 6, 7, 8, 10, 15	Lisle, N. Y.	7
†Andover Jet., N. J.		†Dunmore, Pa.		†Litchfield, N. Y.	
Ann Arbor, Mich.	1, 2	†Duryea, Pa.		*Little Falls, N. J.	
Apalachin, N. Y.	4, 5			†Lounsberry, N. Y.	
Apulia, N. Y.	7	E		†Lowman, N. Y.	
Ashtabula, Ohio.	1, 2	†Earlville, N. Y.	8	†Luzerne, Pa.	
Athens, N. J.	3, 6	†East Alexander, N. Y.		Lyndhurst, N. J.	3, 6
(See Waverly, N. Y.)		†East Bangor, Pa.		○Lyons, N. J.	
Atlanta, N. Y.	4, 5	†East Bethany, N. Y.	4, 5		
Atlantic City, N. J.	4, 5	†East Buffalo, N. Y.		M	
†Auchincloss, Pa.	9	†East Freetown, N. Y.		Madison, N. J.	3, 6
†Augusta, N. J.		†East Orange, N. J.	3, 6	†Manunka Chunk, N. J.	
Avoca, N. Y.	4, 5	†East Stroudsburg, Pa.		Maplewood, N. J.	3, 6
†Avaldale, Pa.		(See Stroudsburg, Pa.)		Marathon, N. Y.	7, 9
		†Echo Lake, Pa.	11	†Marshall's Creek, Pa.	11
B		†Edelman, Pa.		†Martins Creek, N. J.	
†Baldwinsville, N. Y.	7	†Elmhurst, Pa.	1, 2, 4, 5, 9, 13	†Martins Creek, Pa.	
Baltimore, Md.	9, 13	†Elmira, N. Y.		†Martins Creek Jct., Pa.	
†Bangor, Pa.		†Elmira Heights, N. Y.		Mauch Chunk, Pa.	9
○Basking Ridge, N. J.		†Empire Vestal, N. Y.	4, 5	†McGraw, N. Y.	
Bath, N. Y.	4, 5	†Erie, Pa.	1, 2	†Messengersville, N. Y.	
†Bath, Pa.		†Espy, Pa.		Millburn, N. J.	3, 6
†Battle Creek, Mich.	1, 2	F		†Miller, Pa.	
†Beach Haven, Pa.		†Factoryville, Pa.		○Millington, N. J.	
†Belfast, Pa.		†Farzo, N. Y.		○Mine Brook, N. J.	
†Bergen Jct., N. J.		○Far Hills-Bedminster, N. J.		†Minetto, N. Y.	7
○Berkeley Heights, N. J.		Fort Wayne, Ind.		×Montclair, N. J.	
○Bernardsville, N. J.		†Forty Fort, Pa.		*Montville, N. J.	
†Berwick, Pa.	15	†Fossil, Pa.	4, 5	†Morehain, N. Y.	
Bethlehem, Pa.	9	†Fox Hill, N. J.	4, 5	†Morris Plains, N. J.	3, 6
Big Flats, N. Y.	4, 5	†Fulton, N. Y.	7	†Morristown, N. J.	3, 6
Binghamton, N. Y.	1, 2, 4, 5, 7, 8, 9, 10, 13	G		Moscow, Pa.	3, 6
†Black Rock, N. Y.		†Galena, N. Y.	8	Mountainhome, Pa.	
Blairstown, N. J.	3, 6	○Gillette, N. J.		(See Cresco)	3, 6, 13
Blodgett Mills, N. Y.	7	○Gladstone, N. J.		Mountain Lakes, N. J.	3, 6
×Bloomfield, N. J.		×Glen Ridge, N. J.		Mountain Station, N. J.	3, 6
†Bloomsburg, Pa.	15	×Gouldsboro, Pa.	3, 6	Mountain View, N. J.	3, 6
B. & O. Jct., N. Y.	4, 5	†Grand Central, Pa.		†Mount Arlington, N. J.	
Boonton, N. J.	3, 6	†Greendell, N. J.		†Mount Bethel, Pa.	
▲Branchville, N. J.		†Greene, N. Y.	8	Mount Morris, N. Y.	4, 5
†Briar Creek, Pa.		†Greitsville, N. Y.	4, 5	Mount Pocono, Pa.	3, 6
Brick Church, N. J.	3, 6, 7, 8, 10	†Grove Street, N. J.	3, 6	†Mount Tabor, N. J.	
†Bridgeville, N. Y.		H		○Murray Hill, N. J.	
†Bridgewater, N. Y.		*Hackettstown, N. J.			
†Brishen, N. Y.	8	†Hallstead, Pa.	4, 5	N	
†Broadway, N. J.		†Hampton, N. J.		†Nay Aug, Pa.	
Buck Hill Falls, Pa.		†Hartel, N. Y.	1, 2, 3, 6, 10, 13	†Nazareth, Pa.	
(See Cresco)	3, 6, 13	†Harrison-See Newark, N. J.		†Netcong (Stanhope), N. J.	
Buffalo, N. Y.	1, 2, 4, 5, 9, 12, 13	†Henryville, Pa.	3, 6	Newark, N. J.	1, 2, 3, 6, 7, 8, 10, 13
†Buffalo Jct., N. Y.		†Hercules, Pa.		†New Hartford, N. Y.	8
◆Bushkill, Pa.	11	†Hicks Ferry, Pa.		†New Milford, Pa.	4, 5
C		†Highland Ave., N. J.	3, 6	○New Providence, N. J.	
†Cameron, Pa.		†Hoboken, N. J.	1, 2, 3, 6, 7, 8, 10, 11, 12	▲Newton, N. J.	
Campbell, N. Y.	4, 5	†Hollisters, Pa.		†New Village, N. J.	
Canadensis, Pa.	3, 6, 13	†Homer, N. Y.	7, 9	New York, N. Y.	1, 2, 3, 6, 7, 8, 10, 11, 12
(See Cresco)		†Horseheads, N. Y.		◆Niagara Falls, N. Y.	
†Candor, N. Y.	10	†Hubbardsville, N. Y.	8	†Nichols, N. Y.	4, 5
†Caroline, N. Y.		†Hunlock Creek, Pa.		†Nicholson, Pa.	4, 5
Catontok, N. Y.		I		†North Alexander, N. Y.	
†Catawissa, Pa.		Indianapolis, Ind.	1, 2	†North Arlington, N. J.	
†Cedarville, N. Y.	3, 6	Ithaca, N. Y.	1, 2, 4, 5, 10, 13	†North Brookfield, N. Y.	8
†Chadwick, N. J.	7, 8	J		†North Darlen, N. Y.	
†Changewater, N. J.		Jackson, Mich.	1, 2	†Northumberland, Pa.	15
Chatham, N. J.	3, 6	Jamesville, N. Y.	7	†Norwich, N. Y.	1, 2, 8
Chenango Bridge, N. Y.	7	Johnsonburg, N. J.	3, 6	†No. 6 Jct., Pa.	
Chenango Forks, N. Y.	7, 8	†Johnson City, N. Y.		O	
Chicago, Ill.	1, 2	K		†Old Forge, Pa.	
†Chulasky, Pa.		Kalamazoo, Mich.	1, 2	†Onalva, N. Y.	
Cincinnati, Ohio.	1, 2	†Keary Jct., N. J.	4, 5	Orange, N. J.	3, 6
†Cincinnati, N. Y.	4, 5	†Kensington, N. Y.		†Oswego, N. Y.	4, 5, 10
†Clarks Summit, Pa.	4, 5	†Kenvil, N. J.	7	†Owego, N. Y.	4, 5, 10
†Clayville, N. Y.		†Killawog, N. Y.	7	†Oxford, N. Y.	8
Cleveland, Ohio.	1, 2	†Kingsland, N. J.	3, 6	†Oxford Furnace, N. J.	
†Clifton, N. J.	4, 5	†Kingsley, Pa.	4, 5	P	
Colcocton, N. Y.	4, 5	†Kingston, Pa.		†Painted Post, N. Y.	
Conklin, N. Y.	4, 5	L		Paradise Falls, Pa.	
Convent, N. J.	3, 6	▲Lafayette, N. J.		(See Cresco)	3, 6, 13
†Coopers, N. Y.		†Lake Hopateong, N. J.		†Paris, N. Y.	8
Corning, N. Y.	4, 5	(Mount Arlington)		Passaic, N. J.	3, 6
Corthland, N. Y.	1, 2, 4, 5, 7, 9	†Lancaster, N. Y.	4, 5	†Paterson, N. J.	3, 6
†Cortland Jct., N. Y.		†Lansdale, Pa.	9	○Peapack, N. J.	
Coventry, N. Y.				†Perkinsville, N. Y.	
†Craig's, N. Y.				†Philadelphia, Pa.	9, 10, 13, 14
▲Cranberry Lake, N. J.				†Phillipsburg, N. J.	14
Cresco, Pa.	3, 6, 13				
D					
Dalton, Pa.	4, 5				
Dansville, N. Y.	4, 5				
†Danville, Pa.	15				
†Delabole, Pa.					

▲ Located on Sussex Branch. See Suburban time table.  
 × Located on Montclair Branch. Tables 3, 6, show service to and from Newark, N. J., the junction point. (See Suburban time table.)  
 ○ Located on Gladstone Branch. Tables 3, 6, show service to and from Summit, N. J., the junction point. (See Suburban time table.)  
 \* Located on Phillipsburg Branch. Suburban time table shows service to and from Washington, N. J., the junction point. (Local Bus Service between Washington, N. J. and Phillipsburg, N. J.)  
 ◆ Located on Boonton Line. (See Suburban time table.)  
 † Located on Main Line. (See Suburban time table.)  
 ‡ Independent bus connections. † Freight Service only. (For information consult General Offices or nearest Traffic Department representative shown on page 15.)

# GENERAL OFFICES—140 CEDAR STREET, NEW YORK 6, N. Y.—TELEPHONE BARCLAY 7-2500

## TRAFFIC DEPARTMENT

**C. F. FARMER**, Vice-President, New York  
**H. C. SCHMIDT**, Assistant Vice-President, New York

## FREIGHT

**GEORGE HERBERT**, Asst. Freight Traffic Manager.....New York  
**HARRY F. DOYLE**, Asst. Freight Traffic Manager.....New York  
**W. M. MacPHERSON**, Asst. Freight Traffic Manager.....Buffalo, N. Y.  
**J. H. CHRISTY**, Western Traffic Manager.....Chicago, Ill.  
**L. A. DALTON**, General Dairy Agent.....Chicago, Ill.  
**WILLIAM K. MARTIN**, Asst. Gen. Freight Agent.. } New York  
**W. H. BROWNE**, Foreign Freight Traffic Mgr..... } Pier 13, N. R. ft.  
**W. F. AHEARN**, Foreign Freight Agent..... } Cortlandt Street New York

**JOSEPH S. SIKORA**, Freight Traffic Manager (Rates and Divisions).....New York  
**E. M. SELLERS**, General Freight Agent.....New York  
**W. J. STUMPF**, Assistant General Freight Agent.....New York  
**E. J. McGARRY**, Assistant to General Freight Agent.....New York  
**L. F. HEINECK**, General Coal Freight Agent.....New York  
**J. E. HAYDEN**, Coal Freight Agent.....New York  
**L. E. TENNEY**, Manager Commercial Development.....New York  
**J. A. CORCORAN**, Industrial Agent.....New York

## PASSENGER

**W. E. CARBONE**, General Passenger Agent.....New York  
**C. F. FELTHAM**, Gen. Eastern Pass. Agent, 500 Fifth Avenue (18).....New York

**W. H. DOMINICK**, Passenger Traffic Manager, New York

**M. P. NELSON**, Manager Mail, Express, Baggage and Milk Traffic.. Hoboken, N. J.  
**R. F. IRWIN**, General Agent, Passenger Department.....New York

## DINING CAR DEPARTMENT

**R. H. LLOYD**, Supt. Dining Car Department, Hoboken, N. J.

## TRAFFIC REPRESENTATIVES

**Albany 7, N. Y.**—Room 5, Del. & Hud. Bldg.—Phone Albany 3-4517  
**W. P. CAMPION**, General Agent

**Binghamton, N. Y.**—Lackawanna Station—Phone Binghamton 4-1311  
**W. E. DOWNS**, Division Passenger Agent

**Boston 14, Mass.**—N. Station Office Bldg., 150 Causeway St.—Phone Capital 7-8970  
**DANIEL L. NORTON**, General Agent

**Brooklyn, N. Y.**—Pier 13, N. R. (ft. of Cortlandt St.) New York 7—Phone Barclay 7-2500  
**HAROLD J. AMBRUSTER**, City Freight Agent

**Buffalo 2, N. Y.**—11 W. Genesee St.—Phone Cleveland 2488  
**NEIL A. MITTS**, General Agent, Passenger Department

**Chicago 4, Ill.**—327 South LaSalle Street—Phone Washington 2-3443  
**C. R. HARTSHORN**, Asst. General Freight Agent  
**W. J. NOLAN**, Asst. General Freight Agent

**Cincinnati 2, Ohio**—1332 Enquirer Bldg., 617 Vine Street—Phone Main 0730  
**CLINTON C. RAU**, General Agent

**Cleveland 14, Ohio**—310 Park Bldg.—Phone Main 1-0435  
**RAY K. LOVITT**, General Agent

**Detroit 26, Mich.**—730 Lafayette Bldg.—Phone Woodward 1-6727  
**A. H. SNIDER**, General Agent

**Easton, Pa.**—402 Northampton Street—Phone Easton 9021  
**Z. LEE MATHERS**, General Agent

**Elmira, N. Y.**—Lackawanna Station—Phone Elmira 6261  
**F. W. SCHEPPMANN**, Traveling Passenger Agent

**Houston, Texas**—435 Bankers Mortgage Building—Phone Atwood 0082  
**CHARLES D. SANTOR**, General Agent

**Indianapolis 4, Ind.**—622 Board of Trade Bldg.—Phone Franklin 8280  
**SAMUEL J. NEILL**, General Agent

**Kansas City 6, Mo.**—403 Railway Exchange Bldg.—Phone Victor 2226  
**BRUCE L. DILL**, General Agent

**Los Angeles 14, Calif.**—108 West Sixth Street—Phone Tucker 2067  
**J. D. GIVEN**, General Agent

**Milwaukee 3, Wis.**—1315 Majestic Bldg.—Phone Marquette 8-6410  
**GROVER C. HOWE**, General Agent

**Minneapolis 1, Minn.**—940 Metropolitan Building—Phone Main 5301  
**A. D. LEONARD**, General Agent

## Newark 2, N. J.—

**GEORGE R. MARR**, Division Freight Agent  
 Lackawanna Station—Phone Humboldt 2-2100  
**R. H. TAYLOR**, Division Passenger Agent  
 Griffith Bldg., 605 Broad Street, Rooms 502-503—Phone Market 3-3440

**New Haven 10, Conn.**—Malley Bldg., 902 Chapel St.—Phone New Haven 6-2466  
**WILLIAM J. WYNNE**, General Agent

**New York 7, N. Y.**—Pier 13, N. R. (foot of Cortlandt St.) New York 7, N. Y.  
 Freight Department Phone Barclay 7-2500  
**ELLIOTT E. BROTHERS**, General Agent  
**GEORGE L. BOLTON**, Dairy Agent

**500 Fifth Avenue at 42nd Street—Room 842, New York 18, N. Y.**—  
 Passenger Department Phone Lackawanna 4-0234  
**W. H. WEBER**, District Passenger Agent

**Philadelphia 2, Pa.**—1606 Finance Bldg.—Phone Bell, Rittenhouse 6-2848—2849  
**HOWARD A. WHITNEY**, General Agent

**Pittsburgh 22, Pa.**—503 Park Bldg.—Phone Atlantic 1-0463  
**J. A. MCCOY**, General Agent

**Portland 5, Ore.**—903 Terminal Sales Bldg.—Phone Beacon 3191  
**FRED W. DOST**, Traveling Freight Agent

**St. Louis 1, Mo.**—1971-1972 Railway Exchange Bldg.—Phone Main 2460  
**W. A. BRANNING**, General Agent

**San Francisco 5, Calif.**—805 Monadnock Bldg.—Phone Sutter 1-7515  
**A. B. COLLINS**, General Agent

**Scranton 3, Pa.**—Lackawanna Station—Phone Scranton 5251  
**E. C. ENNIS**, Division Freight Agent  
**J. H. VAN WIE**, Division Passenger Agent

**Seattle 1, Wash.**—707 Jones Bldg.—Phone Main 3055  
**R. A. WARREN**, General Agent

**Syracuse 2, N. Y.**—Lackawanna Station—Phone Syracuse 2-9211  
**H. RUSSELL O'HARA**, Division Freight Agent  
**O. J. STINGER**, City Passenger Agent

**Toledo 4, Ohio**—1301 Toledo Trust Bldg.—Phone Adams 181  
**HAROLD H. BALK**, General Agent

**Toronto 1, Ont.**—1806 Royal Bank Bldg.—Phone Elgin 7635  
**J. S. BRANNING**, Canadian Agent

# Lackawanna Railroad



# Lackawanna Railroad



THE ROUTE OF  
*Phoebe Snow*

## TIME TABLES

SEPTEMBER 24, 1950

THE ROUTE OF  
*Phoebe Snow*

## TIME TABLES

SEPTEMBER 24, 1950