

# WARMTH AND SUBTROPICAL ENCHANTMENT



## Only a Day Away BY TRAIN

THE WARMTH and comfort of bright sunny days, swaying palms, colorful flowers, and a wealth of opportunities for refreshing relaxation, or invigorating recreation await you down on the East Coast of Florida, regardless of the season.

Plan to visit this unique land where you can live, work or play so comfortably in January as well as June. Relax on its sun-drenched beaches, play golf on its always green fairways, or fish in its sparkling waters. See its thriving cities and resorts, productive groves, rich farm and cattle lands. Investigate the many opportunities resulting from its continuing rapid growth in wealth and population.

An important advantage, too, is that this entire coast can be so easily and inexpensively reached by train. Finely equipped streamliners from both the East and West, operating over the double track Florida East Coast Railway, conveniently serve it the year around.



# FLORIDA EAST COAST RAILWAY

# THROUGH SERVICE

# From and To **NEW YORK** and the **EAST**

**SOUTHBOUND**  
Read Down

**All Trains Diesel-Powered**

**NORTHBOUND**  
Read Up

<b>HAVANA SPECIAL</b>	<b>MIAMIAN</b> A.C.L. No. 91 F.E.C. No. 7	<b>EAST COAST CHAMPION</b>		<b>EAST COAST CHAMPION</b>	<b>MIAMIAN</b> A.C.L. No. 92 F.E.C. No. 8	<b>HAVANA SPECIAL</b>
Coach & Pullman	Coach & Pullman	Coach & Pullman	Eastern Standard Time	Coach & Pullman	Coach & Pullman	Coach & Pullman
10 00 PM	2 40 PM	2 20 PM	Lv New York (Penna. Sta.) . . . Ar	10 50 AM	2 30 PM	7 05 AM
10 15 PM	2 55 PM	2 35 PM	Lv Newark . . . . . Ar	10 34 AM	2 14 PM	6 42 AM
11 42 PM	4 25 PM	4 02 PM	Lv Philadelphia (30th St.) . . . Ar	9 07 AM	12 51 PM	4 57 AM
1 30 AM	6 08 PM	5 35 PM	Lv Baltimore . . . . . Ar	7 22 AM	11 21 AM	2 58 AM
2 15 AM	6 50 PM	6 20 PM	Ar Washington . . . . . Lv	6 40 AM	10 40 AM	2 15 AM
3 10 AM	7 10 PM	6 40 PM	Lv Washington (R.F.&P.) . . . Ar	6 20 AM	10 10 AM	1 10 AM
6 30 AM	9 45 PM	9 15 PM	Lv Richmond (A.C.L.) . . . . . Ar	3 40 AM	7 35 AM	10 05 PM
3 10 PM	4 09 AM	3 35 AM	Lv Charleston . . . . . Ar	9 02 PM	12 52 AM	1 10 PM
5 40 PM	6 05 AM	5 30 AM	Lv Savannah . . . . . Ar	7 20 PM	11 10 PM	11 00 AM
8 30 PM	8 55 AM	8 00 AM	Ar Jacksonville . . . . . Lv	4 55 PM	8 45 PM	8 10 AM
10 30 PM	9 40 AM	8 20 AM	Lv Jacksonville . . . . . Ar	4 35 PM	8 15 PM	7 00 AM
11 07 PM	10 16 AM	8 56 AM	Ar St. Augustine . . . . . Lv	3 51 PM	7 30 PM	6 11 AM
12 24 AM	11 15 AM	9 48 AM	Ar Daytona Beach . . . . . Lv	2 58 PM	6 34 PM	5 03 AM
12 45 AM	11 38 AM	10 07 AM	Ar New Smyrna Beach . . . . . Lv	2 35 PM	6 09 PM	4 35 AM
1 34 AM	12 23 PM	10 50 AM	Ar Titusville . . . . . Lv	1 50 PM	5 23 PM	3 37 AM
1 58 AM	12 43 PM	11 09 AM	Ar Cocoa-Rockledge . . . . . Lv	1 32 PM	5 05 PM	3 14 AM
2 25 AM	1 06 PM	11 31 AM	Ar Melbourne . . . . . Lv	1 11 PM	4 45 PM	2 39 AM
3 10 AM	1 41 PM	12 05 PM	Ar Vero Beach . . . . . Lv	12 40 PM	4 13 PM	1 55 AM
3 34 AM	1 59 PM	12 24 PM	Ar Fort Pierce . . . . . Lv	12 26 PM	3 56 PM	1 35 AM
4 08 AM	2 30 PM	12 54 PM	Ar Stuart . . . . . Lv	11 53 AM	3 20 PM	12 56 AM
4 47 AM	3 13 PM	1 38 PM	Ar West Palm Beach . . . . . Lv	11 12 AM	2 36 PM	12 03 AM
5 13 AM	3 27 PM	1 51 PM	Ar Lake Worth . . . . . Lv	10 56 AM	2 19 PM	11 38 AM
5 28 AM	3 42 PM	2 06 PM	Ar Delray Beach . . . . . Lv	10 42 AM	2 04 PM	11 22 PM
5 40 AM	E 3 53 PM	E 2 17 PM	Ar Boca Raton . . . . . Lv	E 10 31 AM	E 1 52 PM	B 11 10 PM
6 07 AM	E 4 16 PM	E 2 41 PM	Ar Fort Lauderdale . . . . . Lv	10 10 AM	1 32 PM	10 45 PM
6 24 AM	4 30 PM	2 54 PM	Ar Hollywood . . . . . Lv	9 58 AM	1 18 PM	10 28 PM
7 00 AM	5 00 PM	3 20 PM	Ar Miami . . . . . Lv	9 35 AM	12 55 PM	10 00 PM

**REFERENCE MARKS:** (f) Stops on signal to receive or discharge passengers. (B) Stops to receive or discharge revenue passengers from or for Jacksonville and points north or west thereof. (E) Stops to receive or discharge revenue passengers for or from Fort Pierce and north, and for or from Miami.

## EQUIPMENT

**MIAMIAN:** Coach and Pullman; through sleepers between New York and Miami; Washington and Miami; through reserved individual reclining seat coaches; full-length tavern-lounge and dining car.

**CHAMPION:** Coach and Pullman; through sleepers between New York and Miami; Pullman bar lounge; through reserved individual reclining seat coaches; full-length tavern-lounge-observation; two dining cars.

**HAVANA SPECIAL:** Coach and Pullman; through sleepers between New York and Miami; and Jacksonville and Miami; through individual reclining seat coaches (not reserved) between New York and Miami, and Jacksonville and Miami; dining car service.

## FLORIDA'S ONLY DOUBLE TRACK ROUTE

When you travel Florida East Coast, you enjoy the superior speed, comfort and safety advantages of Florida's only double track line—fast, finely equipped Diesel-powered trains over a roadbed noted for its restful riding smoothness.



# Reduced Round-Trip Fares

In Effect Until Nov. 15

Attractively reduced round-trip fares, with a 30-day limit, apply until November 15th, between all points on the Florida East Coast and many other destinations. Here are a few examples (15% Federal tax not included:)—

<b>TO NEW YORK</b>	<b>ROUND-TRIP</b>
From:	in Coaches
St. Augustine . . . . .	\$45.06
Daytona Beach . . . . .	47.76
Fort Pierce . . . . .	52.71
West Palm Beach . . . . .	54.86
Ft. Lauderdale . . . . .	56.41
Miami . . . . .	57.36

### TO WASHINGTON

From:	
St. Augustine . . . . .	\$29.90
Daytona Beach . . . . .	32.60
Fort Pierce . . . . .	37.55
West Palm Beach . . . . .	39.70
Ft. Lauderdale . . . . .	41.25
Miami . . . . .	42.20

### TO ATLANTA

From:	
St. Augustine . . . . .	\$14.25
Daytona Beach . . . . .	16.95
Fort Pierce . . . . .	21.90
West Palm Beach . . . . .	24.10
Ft. Lauderdale . . . . .	25.65
Miami . . . . .	26.60

### TO CINCINNATI

From:	
St. Augustine . . . . .	\$32.45
Daytona Beach . . . . .	35.15
Fort Pierce . . . . .	40.10
West Palm Beach . . . . .	42.25
Ft. Lauderdale . . . . .	43.80
Miami . . . . .	44.75

# THROUGH SERVICE

## From and to **CHICAGO and MID WEST**

CHICAGO-MIAMI—Every Third Day

### CITY OF MIAMI

Coach and Pullman Streamliner

8.10 AM	Lv. (CT) . . . Chicago (Ill.C) . . . Ar	10.45 PM
9.22 AM	Lv. . . . . St. Louis . . . . . Ar	8.40 PM
12.55 PM	Lv. . . . . Carbondale . . . . . Ar	5.33 PM
2.08 PM	Lv. . . . . North Cairo . . . . . Ar	4.24 PM
4.20 PM	Lv. . . . . Jackson . . . . . Ar	2.13 PM
9.40 PM	Lv. . . . . Birmingham (CoGa.) . . . . . Ar	9.10 AM
4.25 AM	Lv. (ET) . . . . . Albany (ACL) . . . . . Ar	4.25 AM
8.05 AM	Lv. (ET) . . . . . Jacksonville (ACL) . . . . . Ar	12.45 AM
8.25 AM	Lv. . . . . Jacksonville (FEC) . . . . . Ar	12.25 AM
9.01 AM	Lv. . . . . St. Augustine . . . . . Ar	11.43 PM
9.56 AM	Lv. . . . . Daytona Beach . . . . . Ar	10.49 PM
10.20 AM	Lv. . . . . New Smyrna Beach . . . . . Ar	10.27 PM
12.34 PM	Lv. . . . . Fort Pierce . . . . . Ar	8.18 PM
1.46 PM	Lv. . . . . West Palm Beach . . . . . Ar	7.02 PM
2.46 PM	Lv. . . . . Fort Lauderdale . . . . . Ar	6.00 PM
3.29 PM	Lv. . . . . Hollywood . . . . . Ar	5.48 PM
2.55 PM	Lv. . . . . Miami . . . . . Ar	5.25 PM

Through sleepers Chicago-Miami, reserved seat coaches Chicago-Miami, St. Louis-Miami; dining car; tavern-lounge-observation.

#### DATES OF OPERATION

From Chicago:

- SEP. 3, 6, 9, 12, 15, 18, 21, 24, 27, 30.  
 OCT. 3, 6, 9, 12, 15, 18, 21, 24, 27, 30.  
 NOV. 2, 5, 8, 11, 14, 17, 20, 23, 26, 29.  
 DEC. 2, 5, 8, 11, 14, 15, 17, 18, 20, 21, 23, 24, 26, 27, 29, 30.

From Miami:

- SEP. 1, 4, 7, 10, 13, 16, 19, 22, 25, 28.  
 OCT. 1, 4, 7, 10, 13, 16, 19, 22, 25, 28, 31.  
 NOV. 3, 6, 9, 12, 15, 18, 21, 24, 27, 30.  
 DEC. 3, 6, 9, 12, 15, 16, 18, 19, 21, 22, 24, 25, 27, 28, 30, 31.

CHICAGO-MIAMI—Every Third Day

### DIXIE FLAGLER

Coach and Pullman Streamliner

10.00 AM	Lv. (CT) . . . Chicago (C&E) . . . Ar	8.45 PM
8.30 AM	Lv. . . . . St. Louis (L&N) . . . . . Ar	
4.05 AM	Lv. . . . . Evansville (L&N) . . . . . Ar	2.45 PM
7.25 PM	Lv. . . . . Nashville (NC&St.L) . . . . . Ar	11.25 AM
11.48 PM	Lv. (ET) . . . . . Chattanooga . . . . . Ar	9.02 AM
3.05 AM	Lv. . . . . Atlanta (ACL) . . . . . Ar	5.45 AM
10.55 AM	Lv. . . . . Jacksonville . . . . . Ar	9.45 PM
11.25 AM	Lv. . . . . Jacksonville (FEC) . . . . . Ar	9.15 PM
12.01 PM	Lv. . . . . St. Augustine . . . . . Ar	8.31 PM
12.53 PM	Lv. . . . . Daytona Beach . . . . . Ar	7.38 PM
1.13 PM	Lv. . . . . New Smyrna Beach . . . . . Ar	7.17 PM
3.33 PM	Lv. . . . . Fort Pierce . . . . . Ar	5.06 PM
4.46 PM	Lv. . . . . West Palm Beach . . . . . Ar	3.46 PM
5.46 PM	Lv. . . . . Fort Lauderdale . . . . . Ar	2.50 PM
5.59 PM	Lv. . . . . Hollywood . . . . . Ar	2.38 PM
6.25 PM	Lv. . . . . Miami . . . . . Ar	2.15 PM

Through sleepers Chicago-Miami, coaches; dining car; tavern-lounge-observation.

#### DATES OF OPERATION

From Chicago:

- SEP. 2, 5, 8, 11, 14, 17, 20, 23, 26, 29.  
 OCT. 2, 5, 8, 11, 14, 17, 20, 23, 26, 29.  
 NOV. 1, 4, 7, 10, 13, 16, 19, 22, 25, 28.  
 DEC. 1, 4, 7, 10, 13, 16, 17, 19, 20, 22, 23, 25, 26, 28, 29, 31.

From Miami:

- SEP. 3, 6, 9, 12, 15, 18, 21, 24, 27, 30.  
 OCT. 3, 6, 9, 12, 15, 18, 21, 24, 27, 30.  
 NOV. 2, 5, 8, 11, 14, 17, 20, 23, 26, 29.  
 DEC. 2, 5, 8, 11, 14, 17, 18, 20, 21, 23, 24, 26, 27, 29, 30.

CHICAGO-MIAMI—Every Third Day

### SOUTH WIND

Coach and Pullman Streamliner

10.00 AM	Lv. (CT) . . . Chicago (PRR) . . . Ar	8.45 PM
1.50 PM	Lv. . . . . Indianapolis . . . . . Ar	5.01 PM
4.10 PM	Lv. . . . . Louisville (L&N) . . . . . Ar	2.15 PM
7.47 PM	Lv. . . . . Nashville . . . . . Ar	10.45 AM
11.40 PM	Lv. . . . . Birmingham . . . . . Ar	6.55 AM
1.50 AM	Lv. (ET) . . . . . Montgomery (ACL) . . . . . Ar	4.50 AM
7.23 AM	Lv. (ET) . . . . . Thomasville . . . . . Ar	1.12 AM
10.55 AM	Lv. . . . . Jacksonville . . . . . Ar	9.45 PM
11.25 AM	Lv. . . . . Jacksonville (FEC) . . . . . Ar	9.15 PM
12.01 PM	Lv. . . . . St. Augustine . . . . . Ar	8.31 PM
12.53 PM	Lv. . . . . Daytona Beach . . . . . Ar	7.38 PM
1.13 PM	Lv. . . . . New Smyrna Beach . . . . . Ar	7.17 PM
3.33 PM	Lv. . . . . Fort Pierce . . . . . Ar	5.06 PM
4.46 PM	Lv. . . . . West Palm Beach . . . . . Ar	3.46 PM
5.46 PM	Lv. . . . . Fort Lauderdale . . . . . Ar	2.50 PM
5.59 PM	Lv. . . . . Hollywood . . . . . Ar	2.38 PM
6.25 PM	Lv. . . . . Miami . . . . . Ar	2.15 PM

Through sleepers Chicago-Miami, reserved seat coaches; dining car; tavern-lounge-observation.

#### DATES OF OPERATION

From Chicago:

- SEP. 1, 4, 7, 10, 13, 16, 19, 22, 25, 28.  
 OCT. 1, 4, 7, 10, 13, 16, 19, 22, 25, 28, 31.  
 NOV. 3, 6, 9, 12, 15, 18, 21, 24, 27, 30.  
 DEC. 3, 6, 9, 12, 15, 16, 18, 19, 21, 22, 24, 25, 27, 28, 30, 31.

From Miami:

- SEP. 2, 5, 8, 11, 14, 17, 20, 23, 26, 29.  
 OCT. 2, 5, 8, 11, 14, 17, 20, 23, 26, 29.  
 NOV. 1, 4, 7, 10, 13, 16, 19, 22, 25, 28.  
 DEC. 1, 4, 7, 10, 13, 16, 17, 19, 20, 22, 23, 25, 26, 28, 29, 31.

CHICAGO-DETROIT-BUFFALO-MIAMI

### ROYAL PALM

11.45 PM	Lv. (CT) . . . Chicago (NYC) . . . Ar	7.30 AM
4.40 AM	Lv. . . . . Indianapolis . . . . . Ar	1.35 AM
11.30 PM	Lv. (ET) . . . Detroit (NYC) . . . Ar	7.00 AM
1.15 AM	Lv. . . . . Toledo . . . . . Ar	5.00 AM
5.15 PM	Lv. (ET) . . . Buffalo (NYC) . . . Ar	11.49 AM
11.50 PM	Lv. . . . . Cleveland . . . . . Ar	6.55 AM
8.45 AM	Lv. (ET) . . . Cincinnati (Sou.) . . . Ar	9.55 PM
5.29 PM	Lv. (ET) . . . Chattanooga . . . . . Ar	12.40 PM
9.40 PM	Lv. . . . . Atlanta . . . . . Ar	8.00 AM
11.55 PM	Lv. . . . . Macon . . . . . Ar	5.35 AM
7.15 AM	Lv. . . . . Jacksonville . . . . . Ar	10.00 PM
9.40 AM	Lv. . . . . Jacksonville (FEC) . . . . . Ar	8.15 PM
10.16 AM	Lv. . . . . St. Augustine . . . . . Ar	7.30 PM
11.15 AM	Lv. . . . . Daytona Beach . . . . . Ar	6.34 PM
11.38 AM	Lv. . . . . New Smyrna Beach . . . . . Ar	6.09 PM
1.59 PM	Lv. . . . . Fort Pierce . . . . . Ar	3.56 PM
3.13 PM	Lv. . . . . West Palm Beach . . . . . Ar	2.36 PM
4.16 PM	Lv. . . . . Fort Lauderdale . . . . . Ar	1.32 PM
4.30 PM	Lv. . . . . Hollywood . . . . . Ar	1.18 PM
5.00 PM	Lv. . . . . Miami . . . . . Ar	12.55 PM

Daily sleepers Detroit-Miami, Buffalo-Miami; through reserved seat coaches Detroit-Miami, Cincinnati-Jacksonville-Miami.

KANSAS CITY-MIAMI

### KANSAS CITY-FLORIDA SPECIAL

11.30 PM	Lv. (CT) . . . Kansas City (Frisco.) . . . Ar	7.30 AM
10.10 AM	Lv. . . . . Memphis . . . . . Ar	6.45 PM
4.35 PM	Lv. . . . . Birmingham (Sou.Ry) . . . . . Ar	11.30 AM
10.45 PM	Lv. (ET) . . . Atlanta . . . . . Ar	6.30 AM
7.30 AM	Lv. . . . . Jacksonville . . . . . Ar	9.05 PM
9.40 AM	Lv. . . . . Jacksonville (FEC) . . . . . Ar	8.15 PM
10.16 AM	Lv. . . . . St. Augustine . . . . . Ar	7.30 PM
11.15 AM	Lv. . . . . Daytona Beach . . . . . Ar	6.34 PM
11.38 AM	Lv. . . . . New Smyrna Beach . . . . . Ar	6.09 PM
1.59 PM	Lv. . . . . Fort Pierce . . . . . Ar	3.56 PM
3.13 PM	Lv. . . . . West Palm Beach . . . . . Ar	2.36 PM
4.16 PM	Lv. . . . . Fort Lauderdale . . . . . Ar	1.32 PM
4.30 PM	Lv. . . . . Hollywood . . . . . Ar	1.18 PM
5.00 PM	Lv. . . . . Miami . . . . . Ar	12.55 PM

Through sleeper Kansas City-Miami daily

JEWELRY, CURRENCY, VALUABLE PAPERS and LIQUIDS should not be placed in baggage intended for checking. As stated in published tariffs, the railway will not assume responsibility for the loss of, or damage to such articles.

### Increased Operation Chicago-Miami Streamliners

Beginning December 14th from Chicago, December 15th from Miami, the CITY OF MIAMI, DIXIE FLAGLER and SOUTH WIND will each operate TWO consecutive days, skipping every third day, as shown above. This expanded service will continue throughout the winter season.

### Mark Your Baggage

All of your baggage, whether checked or carried with you, should be plainly marked with your name and present permanent address. This will insure its prompt recovery should it become lost or go astray. See that all obsolete labels and addresses are removed.

# FLORIDA EAST COAST RAILWAY COMPANY

**SOUTHBOUND**  
Read Down

**CONDENSED SCHEDULE**  
Effective September 23, 1950

**NORTHBOUND**  
Read Up

	No. 75 Daily	No. 5 Daily	No. 29 Daily	No. 7 Daily	No. 3 Daily	No. 1 Daily	Eastern Standard Time	No. 30 Daily	No. 2 Daily	No. 8 Daily	No. 6 Daily	No. 4 Daily	No. 76 Daily						
	HAVANA SPECIAL	DIXIE FLAGLER SOUTH WIND Each Every 3rd Day	DAYLIGHT EXPRESS	MIAMI	CITY OF MIAMI Every 3rd Day	EAST COAST CHAMPION	Miles	<b>COACHES</b> On All Trains						DAYLIGHT EXPRESS	EAST COAST CHAMPION	MIAMI	DIXIE FLAGLER SOUTH WIND Each Every 3rd Day	CITY OF MIAMI Every 3rd Day	HAVANA SPECIAL
	PM	AM	AM	AM	AM	AM			PM	PM	PM	PM	AM	AM					
.....	10.30	11.25	10.00	9.40	8.25	8.20	0	Lv. .... Jacksonville.....	Ar	6.10	4.35	8.15	9.15	12.25	h 7.00	.....	.....	.....	
.....	11.07	12.01	10.44	10.16	9.01	8.56	37	Ar ..... St. Augustine.....	Lv	5.10	3.51	7.30	8.31	11.43	6.11	.....	.....	.....	
.....		See Note M	11.21		See Note M		54	Ar ..... Hastings.....	Lv	4.21						.....	.....	.....	
.....		11.46					61	Ar ..... East Palatka.....	Lv	4.08			See Note M	See Note M		.....	.....	.....	
.....	C12.29	12.32			C 9.30		87	Ar ..... Bunnell.....	Lv	3.28						.....	.....	.....	
.....	12.05	12.52					104	Ar ..... Ormond.....	Lv	3.08						.....	.....	.....	
.....	12.24	12.53	1.12	11.15	9.56	9.48	110	Ar ..... Daytona Beach.....	Lv	2.45	2.58	6.34	7.38	10.49	5.03	.....	.....	.....	
.....	12.45	1.13	1.40	11.38	10.20	10.07	125	Ar ..... New Smyrna Beach.....	Lv	2.15	2.35	6.09	7.17	10.27	4.35	.....	.....	.....	
.....	12.57	1.23	2.01	11.51	10.33	10.19	125	Lv. .... New Smyrna Beach.....	Ar	1.55	2.23	5.57	7.06	10.15	4.20	.....	.....	.....	
.....	1.34	f 2.01	2.40	12.23	f11.04	f10.50	154	Ar ..... Titusville.....	Lv	1.15	f 1.50	5.23	6.31	9.42	3.37	.....	.....	.....	
.....	1.58	2.23	3.06	12.43	11.21	11.09	174	Ar ..... Cocoa-Rockledge.....	Lv	12.43	1.32	5.05	6.14	9.23	3.14	.....	.....	.....	
.....	2.15		3.25				190	Ar ..... Eau Gallie.....	Lv	12.16					2.50	.....	.....	.....	
.....	2.25	2.44	3.38	1.06	11.41	11.31	194	Ar ..... Melbourne.....	Lv	12.07	1.11	4.45	5.55	9.03	2.39	.....	.....	.....	
.....	3.10	3.17	4.35	1.41	12.15	12.05	228	Ar ..... Vero Beach.....	Lv	11.12	12.40	4.13	5.23	8.32	1.55	.....	.....	.....	
.....	3.34	3.33	5.02	1.59	12.34	12.24	242	Ar ..... Fort Pierce.....	Lv	10.50	12.26	3.56	5.06	8.18	1.85	.....	.....	.....	
.....	3.43	3.40	5.12	2.07	12.40	12.30	242	Lv. .... Fort Pierce.....	Ar	10.40	12.18	3.48	4.58	8.10	1.26	.....	.....	.....	
.....	4.08	4.03	5.40	2.30	1.03	12.54	261	Ar ..... Stuart.....	Lv	9.59	11.53	3.20	4.30	7.45	12.56	.....	.....	.....	
.....	B 4.21	B 4.18	f 5.58	B 2.45	B 1.18	B 1.09	275	Ar ..... Hobe Sound.....	Lv	9.35	B11.37	B 3.02	B 4.12	B 7.27	B12.34	.....	.....	.....	
.....	4.47	4.46	6.30	3.13	1.46	1.38	299	Lv. .... West Palm Beach.....	Lv	9.00	11.12	2.36	3.46	7.02	12.03	.....	.....	.....	
.....	4.57	4.46	6.45	3.13	1.46	1.38	299	Lv. .... West Palm Beach.....	Ar	8.50	11.12	2.36	3.46	7.02	11.53	.....	.....	.....	
.....	5.13	4.59	7.01	3.27	1.59	1.51	306	Ar ..... Lake Worth.....	Lv	8.36	10.56	2.19	3.30	6.46	11.38	.....	.....	.....	
.....	5.28	5.13	7.27	3.42	2.13	2.06	317	Ar ..... Delray Beach.....	Lv	8.18	10.42	2.04	3.17	6.32	11.22	.....	.....	.....	
.....	5.40	E 5.24	7.40	E 3.53	E 2.24	E 2.17	326	Ar ..... Boca Raton.....	Lv	8.04	E10.31	E 1.52	B 3.08	B 6.21	B11.10	.....	.....	.....	
.....	5.51	E 5.33	7.57	4.01	E 2.33	B 2.27	333	Ar ..... Pompano Beach.....	Lv	7.52	B10.22	E 1.43	B 2.59	B 6.12	E10.59	.....	.....	.....	
.....	6.07	5.46	8.17	4.16	2.46	2.41	341	Ar ..... Fort Lauderdale.....	Lv	7.38	10.10	1.32	2.50	6.00	10.45	.....	.....	.....	
.....	6.24	5.59	8.40	4.30	2.59	2.54	348	Ar ..... Hollywood.....	Lv	7.20	9.58	1.18	2.38	5.48	10.28	.....	.....	.....	
.....	7.00	6.25	9.20	5.00	3.25	3.20	366	Ar ..... Miami.....	Lv	6.40	9.35	12.55	2.15	5.25	10.00	.....	.....	.....	

k Mon. Wed. Fri. .... 6.00  
k Tues. Thurs. Sat. .... 8.00  
AM

P. & O. Steamship Co.

Lv. .... Miami..... Ar  
Ar. .... Havana..... Lv

AM 8.30  
PM 6.00  
k Mon. Wed. Fri.  
k Sun. Tues. Thurs.

### EXPLANATION OF REFERENCE MARKS

B—Stops to discharge or receive revenue passengers from or for Jacksonville and points north or west thereof.  
C—Stops to discharge revenue passengers from Jacksonville or to receive for New Smyrna Beach and south.  
E—Stops to receive or discharge revenue passengers to or from Miami, and to or from Fort Pierce and points north.

(g)—Miami sleeper "S" open for occupancy at 9:00 P. M.  
(h)—Jacksonville sleeper "S" may be occupied until 7:30 A. M.  
(k)—Subject to change—Consult agents for definite sailing dates.  
(m)—See pages 5 and 6 for dates of operation.

### PAN AMERICAN WORLD AIRWAYS' SERVICE TO CARIBBEAN AND SOUTH AMERICAN POINTS

DAILY	AM	AM	AM	AM	AM	PM	PM	PM	PM	PM
Lv Miami.....	8.00	9.20	10.00	11.00	2.20	3.30	5.00	6.00	7.15	8.30
Ar Havana.....	9.15	10.27	11.07	12.15	3.27	4.45	6.07	7.07	8.30	9.37
	AM	AM	AM	PM	PM	PM	PM	PM	PM	PM
	AM	AM	AM	AM	AM	PM	PM	PM	PM	PM
Lv Havana.....	8.00	8.20	10.00	11.00	11.45	1.30	4.30	5.30	7.00	9.00
Ar Miami.....	9.03	9.35	11.15	12.03	12.48	2.45	5.33	6.45	8.03	10.03
	AM	AM	AM	PM	PM	PM	PM	PM	PM	PM

OUTBOUND: (1) Lv. Miami 8:00 P. M.; 3:00 P. M. Mon. and Thurs.; 1:40 P. M. Tues. and Sat. for Balboa, C. Z. and West Coast of South America. (2) Lv. Miami daily 9:00 A. M. and 2:40 P. M. for San Juan, Puerto Rico, West Indies and East Coast of South America. (3) Lv.

Miami daily 7:00 A. M.; 9:00 A. M. Sun., Wed. and Fri.; 1:40 P. M. Tues. and Sat. for Kingston, Jamaica. (4) Lv. Miami daily 7:00 A. M. for Baranquilla, Colombia. (5) Lv. Miami 7:20 A. M. Mon., Fri.; 7:50 A. M. Tues., Sat. for Mexico City, Mexico.

# EQUIPMENT OF TRAINS

## SOUTHBOUND

### No. 1—EAST COAST CHAMPION—Daily

Coach and Pullman Streamliner.

**Coaches:** (Reserved Seats)  
CH-1 New York-Miami... (44 Seats-Lounge)

**Sleepers:**  
A-152 New York-Miami... (10 Roomette 6 D.Br.m.)  
A-153 New York-Miami... (10 Roomette 6 D.Br.m.)  
A-155 New York-Miami... (6 D.Br.m. Bar-Lounge)

**2 Dining Cars:** New York-Miami.

**Coaches:** (Reserved Seats)  
CH-2 New York-Miami... (52 Seats)  
CH-3 New York-Miami... (56 Seats)  
CH-4 New York-Miami... (56 Seats)  
CH-5 New York-Miami... (56 Seats)  
CH-6 New York-Miami... (56 Seats)  
CH-7 New York-Miami... (56 Seats)  
CH-9 New York-Miami... (56 Seats)

**Tavern-Lounge-Obs.:** New York-Miami.

### No. 3—CITY OF MIAMI

Every third day: Coach and Pullman Streamliner.  
See pages 5 and 6 for dates of operation.

**Coaches:** (Reserved Seats)  
CM-1 Chicago-Miami... (68 Seats)

**Cafe-Lounge:** Chicago-Miami.

**Sleepers:**  
531 Chicago-Miami... (10 Roomette 6 D.Br.m.)  
532 Chicago-Miami... (6 Sec. 6 Roomette 4 D.Br.m.)

**Coaches:** (Reserved Seats)  
CM-3 Chicago-Miami... (60 Seats)  
CM-4 Chicago-Miami... (60 Seats)

**Dining Car:** Chicago-Miami.

**Coaches:** (Reserved Seats)  
CM-5 Chicago-Miami... (60 Seats)  
CM-6 St. Louis-Miami... (60 Seats)

**Tavern-Lounge-Obs.:** Chicago-Miami.

### No. 7—MIAMIAN—Daily

**Coaches:** (Reserved Seats)  
A Jacksonville-Miami... (52 Seats)  
B Jacksonville-Miami... (52 Seats)  
CE-50 New York-Miami  
(A.C.L. No. 91)... (52 Seats)  
RP-3 Detroit-Miami (Royal Palm)... (52 Seats)

**Dining Car:** Jacksonville-Miami.

**Lounge:** Jacksonville-Miami.

**Sleepers:** (From A.C.L. No. 91)  
A-172 New York-Miami... (10 Roomette 6 D.Br.m.)  
A-173 New York-Miami... (8 Sec. 1 D.R. 3 D.Br.m.)  
R-504 Washington-Miami... (10 Roomette 6 D.Br.m.)

**Royal Palm Sleepers:**  
706 Detroit-Miami... (10 Roomette 6 D.Br.m.)  
703 Buffalo-Miami... (10 Roomette 6 D.Br.m.)

**Kansas City-Florida Special Sleeper:**  
aF-68 Kansas City-Miami... (10 Roomette 6 D.Br.m.)  
(a) 10 Roomette 6 D.Br.m., car operates 3 consecutive days, followed by 14 Roomette 4 D.Br.m. car 2 days.

### No. 29—DAYLIGHT EXPRESS—Daily

(Via East Palatka)

**Coaches:** Jacksonville-Miami.

### No. 5—DIXIE FLAGLER

Every third day: Coach and Pullman Streamliner.  
See pages 5 and 6 for dates of operation.

**Coach:** (Reserved Seats)  
DF-1 Chicago-Miami... (22 Seats)

**Sleepers:**  
92 Chicago-Miami... (6 Sec. 6 D.Br.m.)  
90 Chicago-Miami... (6 D.Br.m. Bar-Lounge)

**Dining Car:** Jacksonville-Miami.

**Coaches:** (Reserved Seats)  
DF-4 Chicago-Miami... (56 Seats)  
DF-3 Chicago-Miami... (52 Seats)  
DF-2 Chicago-Miami... (60 Seats)

**Tavern-Lounge-Obs.:** Jacksonville-Miami.

## No. 5—SOUTH WIND

Every third day: Coach and Pullman Streamliner.  
See pages 5 and 6 for dates of operation.

**Coach:** (Reserved Seats)  
SW-7 Chicago-Miami... (22 Seats)

**Sleepers:**  
SW-43 Chicago-Miami... (6 Sec. 6 D.Br.m.)  
SW-42 Chicago-Miami... (21 Roomette)  
SW-41 Chicago-Miami... (6 D.Br.m. Bar-Lounge)

**Dining Car:** Jacksonville-Miami.

**Coaches:** (Reserved Seats)  
SW-5 Chicago-Miami... (56 Seats)  
SW-4 Chicago-Miami... (56 Seats)  
SW-3 Chicago-Miami... (52 Seats)

**Tavern-Lounge-Obs.:** Jacksonville-Miami.

## No. 75—HAVANA SPECIAL—Daily

**Coaches:** New York-Miami.  
Jacksonville-Miami.

**Sleepers:**  
A-161 New York-Miami... (10 Sec. 1 Comp. 2 D.Br.m.)  
aS Jacksonville-Miami... (10 Sec. 2 D.R. 1 Comp.)  
(a) Open for occupancy at 9:00 P.M.

## NORTHBOUND

### No. 2—EAST COAST CHAMPION—Daily

**Coach and Pullman Streamliner.**

**Coach:** (Reserved Seats)  
CH-1 Miami-New York... (44 Seats-Lounge)

**Sleepers:**  
F-152 Miami-New York... (10 Roomette 6 D.Br.m.)  
F-153 Miami-New York... (10 Roomette 6 D.Br.m.)  
F-155 Miami-New York... (6 D.Br.m. Bar-Lounge)

**2 Dining Cars:** Miami-New York.

**Coaches:** (Reserved Seats)  
CH-2 Miami-New York... (52 Seats)  
CH-3 Miami-New York... (56 Seats)  
CH-4 Miami-New York... (56 Seats)  
CH-5 Miami-New York... (56 Seats)  
CH-6 Miami-New York... (56 Seats)  
CH-7 Miami-New York... (56 Seats)  
CH-9 Miami-New York... (56 Seats)

**Tavern-Lounge-Obs.:** Miami-New York.

### No. 4—CITY OF MIAMI

Every third day: Coach and Pullman Streamliner.  
See pages 5 and 6 for dates of operation.

**Coach:** (Reserved Seats)  
CM-1 Miami-Chicago... (68 Seats)

**Cafe-Lounge:** Miami-Chicago.

**Sleepers:**  
CM-31 Miami-Chicago... (10 Roomette 6 D.Br.m.)  
CM-32 Miami-Chicago... (6 Sec. 6 Roomette 4 D.Br.m.)

**Coaches:** (Reserved Seats)  
CM-3 Miami-Chicago... (60 Seats)  
CM-4 Miami-Chicago... (60 Seats)

**Dining Car:** Miami-Chicago.

**Coaches:** (Reserved Seats)  
CM-5 Miami-Chicago... (60 Seats)  
CM-6 Miami-St. Louis... (60 Seats)

**Tavern-Lounge-Obs.:** Miami-Chicago.

## No. 8—MIAMIAN—Daily

**Coaches:** (Reserved Seats)  
A Miami-Jacksonville... (52 Seats)  
B Miami-Jacksonville... (52 Seats)  
CE-50 Miami-New York (A.C.L. No. 92)... (52 Seats)  
RP-3 Miami-Detroit (Royal Palm)... (52 Seats)

**Dining Car:** Miami-Jacksonville.

**Lounge:** Miami-Jacksonville.

**Sleepers:** (For A.C.L. No. 92).  
F-172 Miami-New York... (10 Roomette 6 D.Br.m.)  
F-173 Miami-New York... (8 Sec. 1 D.R. 3 D.Br.m.)  
F-504 Washington-Miami... (10 Roomette 6 D.Br.m.)

**Royal Palm Sleepers:**  
F-806 Miami-Detroit... (10 Roomette 6 D.Br.m.)  
F-803 Miami-Buffalo... (10 Roomette 6 D.Br.m.)

**Kansas City-Florida Special Sleeper:**  
aF-68 Miami-Kansas City... (10 Roomette 6 D.Br.m.)  
(a) 10 Roomette 6 D.Br.m., car operates 3 consecutive days, followed by 14 Roomette 4 D.Br.m. car 2 days.

## No. 30—DAYLIGHT EXPRESS—Daily

(Via East Palatka)

**Coaches:** Miami-Jacksonville.

## No. 6—DIXIE FLAGLER

Every third day: Coach and Pullman Streamliner.  
See pages 5 and 6 for dates of operation.

**Coach:** (Reserved Seats)  
DF-1 Miami-Chicago... (22 Seats)

**Sleepers:**  
DF-92 Miami-Chicago... (6 Sec. 6 D.Br.m.)  
DF-90 Miami-Chicago... (6 D.Br.m. Bar-Lounge)

**Dining Car:** Miami-Jacksonville.

**Coaches:** (Reserved Seats)  
DF-4 Miami-Chicago... (56 Seats)  
DF-3 Miami-Chicago... (52 Seats)  
DF-2 Miami-Chicago... (60 Seats)

**Tavern-Lounge-Obs.:** Miami-Jacksonville.

## No. 6—SOUTH WIND

Every third day: Coach and Pullman Streamliner.  
See pages 5 and 6 for dates of operation.

**Coach:** (Reserved Seats)  
SW-7 Miami-Chicago... (22 Seats)

**Sleepers:**  
SW-43 Miami-Chicago... (6 Sec. 6 D.Br.m.)  
SW-42 Miami-Chicago... (21 Roomette)  
SW-41 Miami-Chicago... (6 D.Br.m. Bar-Lounge)

**Dining Car:** Miami-Jacksonville.

**Coaches:** (Reserved Seats)  
SW-5 Miami-Chicago... (56 Seats)  
SW-4 Miami-Chicago... (56 Seats)  
SW-3 Miami-Chicago... (52 Seats)

**Tavern-Lounge-Obs.:** Miami-Jacksonville.

## No. 76—HAVANA SPECIAL—Daily

**Coaches:** Miami-New York.  
Miami-Jacksonville.

**Sleepers:**  
F-161 Miami-New York... (10 Sec. 1 Comp. 2 D.Br.m.)  
aS Miami-Jacksonville... (10 Sec. 1 D.R. 2 Comp.)  
(a) May be occupied until 7:30 A.M. at Jacksonville.



8.34	5.02	3.33	1.59	12.34	12.24	242	A	A	Fort Pierce.	N	10.50	12.26	3.56	5.06	8.18	1.35
3.43	5.16	3.40	2.07	12.40	12.30	242	Lv	A	Fort Pierce.	N	Lv	10.40	3.48	4.58	8.10	1.26
f	5.23				246		A		White City.	N	Lv	10.27				
f	5.29				252		A		Walton.	N	Lv	10.15				
4.08	5.40	4.03	2.30	1.03	12.54	261	A	A	Jensen Beach.	N	Lv	10.10				
f	5.43				264		A		Stuart.	N	Lv	9.59	11.53	3.20	4.30	7.45
f	5.47				264		A		Port Seavall.	N	Lv	9.50				
f	5.53				277		A		Salerno.	N	Lv	9.47				
B 4.21	5.58	B 4.18	B 2.45	B 1.18	1.09	275	A	A	Hobe Sound.	N	Lv	9.35	B 3.02	B 4.12	B 7.27	B 12.34
f	6.12				283		A		Jupiter.	N	Lv	9.21				
f	6.18				291		A		Monet.	N	Lv	9.13				
f	6.23				293		A		Lake Park.	N	Lv	9.09				
4.47	6.30	4.46	3.13	1.46	1.38	238	A	A	Riviera Beach.	N	Lv	9.06				
4.57	6.45	4.46	3.13	1.46	1.38	239	A	A	West Palm Beach.	N	Lv	9.00	2.36	3.46	7.02	13.03
5.13	7.01	4.59	3.27	1.59	1.51	306	A	A	West Palm Beach.	N	Lv	8.56	11.12	2.36	3.46	7.02
f	7.08				309		A		Lake Worth.	N	Lv	8.36	10.56	2.19	3.30	6.46
f	7.16				312		A		Hypoluxo.	N	Lv	8.29				
5.28	7.27	5.13	3.42	2.13	2.06	312	A	A	Boynton Beach.	N	Lv	8.26	2.04	3.17	6.32	11.22
5.40	7.46	E 5.24	E 3.53	E 2.24	E 2.11	325	A	A	Delray Beach.	N	Lv	8.18	10.42	2.04	3.17	6.32
f	7.46				325		A		Boca Raton.	N	Lv	8.04	E 1.52	B 3.08	B 6.21	B 11.10
5.51	7.57	E 5.33	4.01	E 2.33	B 2.27	333	A	A	Deerfield Beach.	N	Lv	7.59				
f	8.01				341		A		Pompano Beach.	N	Lv	7.52	B 10.22	E 1.43	B 2.59	B 6.12
6.07	8.17	5.46	4.16	2.46	2.41	341	A	A	Oakland Park.	N	Lv	7.45				
f	8.32				346		A		Fort Lauderdale.	N	Lv	7.38	10.10	1.32	2.50	6.00
6.24	8.40	5.59	4.30	2.59	2.54	346	A	A	Dania.	N	Lv	7.25				
f	8.46				351		A		Hollywood.	N	Lv	7.20	9.58	1.18	2.38	5.48
f	8.50				351		A		Hallandale.	N	Lv	7.13				
f	8.54				353		A		Ojus.	N	Lv	7.08				
f	9.00				355		A		North Miami Beach.	N	Lv	7.03				
f	9.07				357		A		North Miami.	N	Lv	6.58				
7.00	9.20	6.25	5.00	3.25	3.20	366	A	A	Little River.	N	Lv	6.53				
AM	PH	PH	PH	PH	PH				Miami.	N	Lv	6.40	12.55	2.15	5.25	10.00
											AM					PM

### EXPLANATION OF REFERENCE MARKS

B—Stops to receive or discharge passengers holding revenue tickets to or from Jacksonville and points north or west thereof. C—Stops to discharge revenue passengers from Jacksonville, or to receive passengers for New Smyrna Beach and south. E—Stops to receive or discharge passengers holding revenue tickets

to or from Miami, and to or from Fort Pierce and points north thereof. g—Jacksonville-Miami sleeper "5", open for occupancy at 9:00 P. M. h—Miami-Jacksonville sleeper "5", may be occupied until 7:30 A. M. at Jacksonville. I—Meal stop.

### TIME TABLE INFORMATION

Time from 12:01 midnight to 12:00 noon (A.M. time) is shown in light figures; time from 12:01 noon to 12:00 midnight (P.M. time) is shown in dark figures.

The time shown opposite a station name is the time trains are scheduled to be at such station, unless otherwise indicated.

A—Regular Agency station. N—Agency station with twenty-four hour service.

F—Flag stop; trains stop only on signal, or to let off passengers.

Only southbound trains Nos. 29 and 75 WILL STOP at stations opposite which no time is shown to allow through passengers holding tickets issued at Jacksonville and points north or west thereof to detrain, PROVIDED the desired stop is the destination of the ticket held.

### NOTICE TO PASSENGERS

**BAGGAGE MARKINGS.** All baggage to be transported under check should be plainly and substantially marked with the name and address of the owner.

**BAGGAGE MAXIMA.** No single piece of baggage exceeding 300 pounds in weight or 72 inches in greatest dimension, or single shipments exceeding \$2,500.00 in value will be checked.

**BAGGAGE INSURANCE.** Passengers have the privilege of declaring the value of their baggage with the idea of having the carriers assume a greater liability than \$100 provided for in the ticket contract. The charge for this insurance is 15 cents for each \$100 of increased value.

**BAGGAGE CHECKED TO NON-AGENCY STATIONS.** When baggage is forwarded under check to a station where an agent will not be on duty upon the arrival of this particular train, it must be claimed at the baggage car door immediately upon arrival at that station. Otherwise it will be carried to the first station where agent is on duty and held for further advices.

**BICYCLES, BABY CARRIAGES, CRIBS or PLAY PENS, GO-CARTS, VELOCIPEDS and TRICYCLES** are now transported in baggage cars as part of free baggage allowance.

**LOST ARTICLES.** For articles left in Pullman cars, communications should be addressed to the Superintendent of the Pullman Company at Jacksonville, Fla. However, inquiries addressed to the Passenger Traffic Manager of the Florida East Coast Railway at St. Augustine will be given prompt attention. No responsibility is assumed for articles left at station or in coaches.

**SUBJECT TO CHANGE WITHOUT NOTICE.** The Florida East Coast Railway assumes no responsibility for inconveniences or damages resulting from delayed

trains, errors in time tables or failure to make advertised connections. Schedules are subject to change without notice.

**CHILDREN.** For children under five years of age, when accompanied by parents or guardian, no charges will be made.

For children five years of age and under twelve, the charge will be on the basis of one-half of the regular fare for an adult person.

For children twelve years of age and over, full fare will be charged.

**REDEMPTION OF TICKETS.** Unused tickets will be redeemed under current regulations which provide for proper deductions, in case baggage has been checked or the ticket partly used. Upon application to the local agent, a form will be supplied which must be filled in; or, communication addressed to the Passenger Traffic Manager at St. Augustine will be given prompt consideration.

**ADJUSTMENT OF DIFFERENCES.** In case of disagreement with an Agent or Conductor as to the proper amount to be collected, we ask that the passenger make payment in accordance with the demands of the employee, and take a receipt dated and signed. The question should then be referred to the Passenger Traffic Manager at St. Augustine who will give it prompt attention.

**STOP-OVERS.** One-way tickets are limited to 30 days, in addition to date of sale and stop-overs at intermediate stations are allowed upon application to conductors. On round-trip tickets stop-overs are allowed at intermediate station in both directions within the final limit.

**TICKETS WILL NOT BE SOLD** to crippled persons or those who are too ill to adequately care for themselves, unless accompanied by a competent person in charge; to persons who are intoxicated or whose conduct might be annoying or hazardous to other passengers.

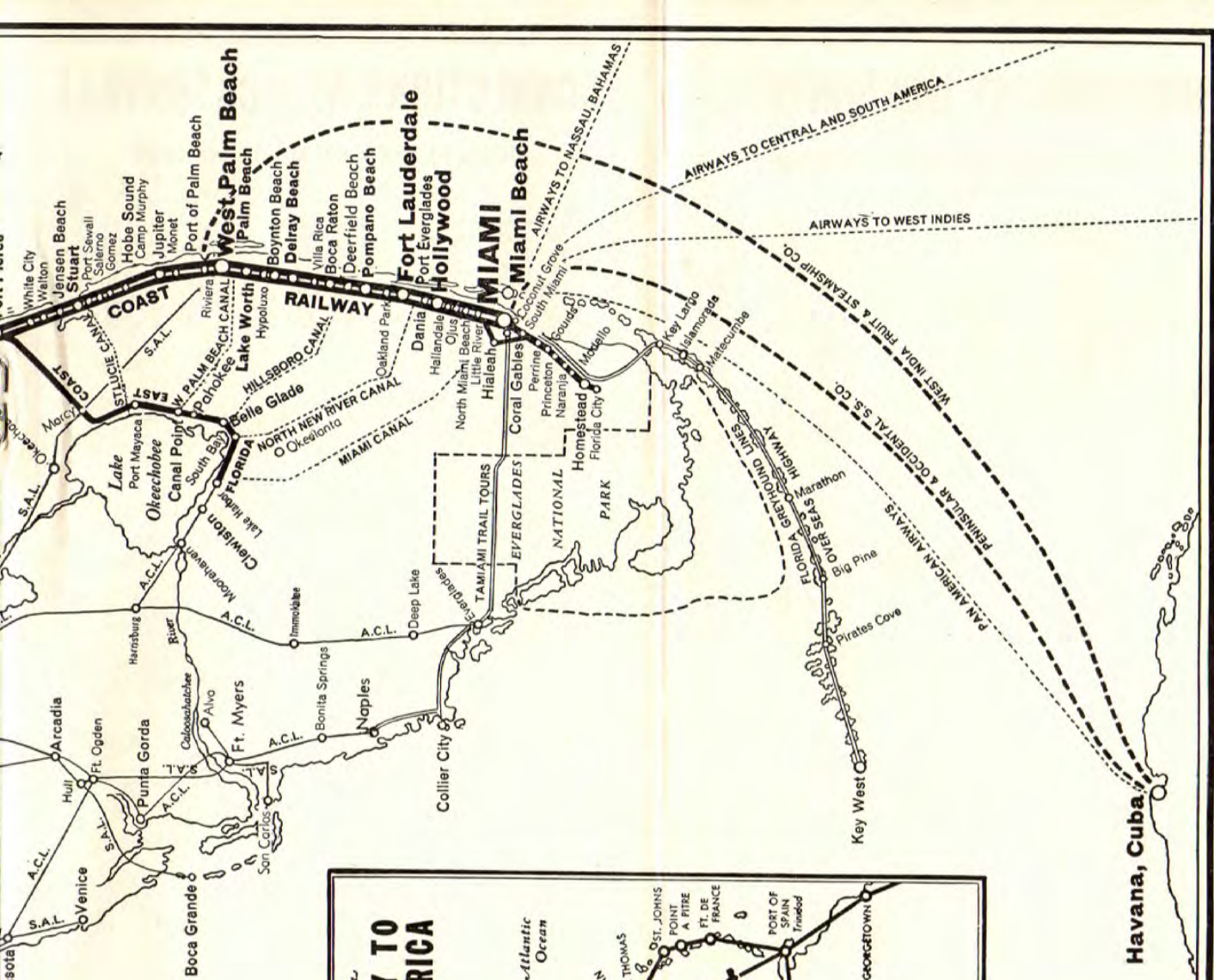


ATLANTIC OCEAN

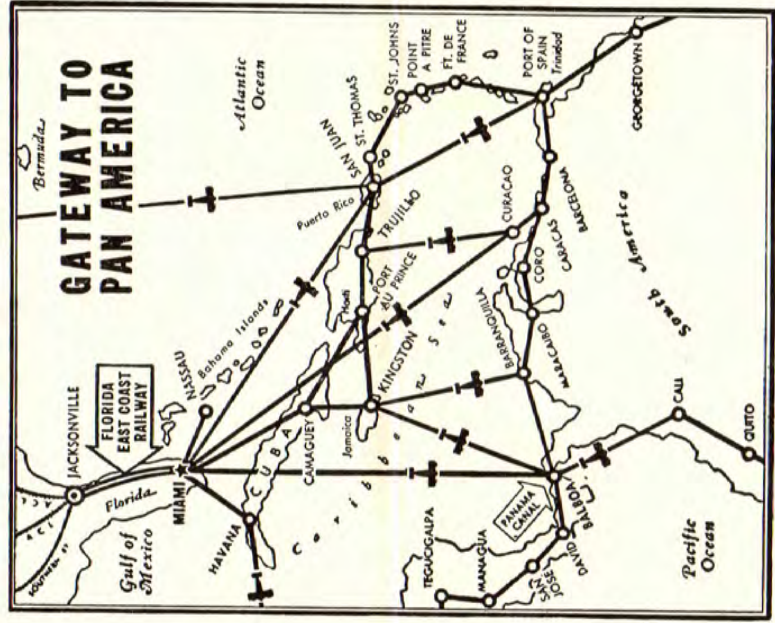


GULF OF MEXICO





Havana, Cuba



# CONNECTIONS AT JACKSONVILLE

## Boston-New York-Philadelphia-Washington Jacksonville

	NYNH&H-PENNA.- RF&P-ACL			
	375	105 1	195 91	141 75
Eastern Standard Time				
Lv Boston	AM	AM	AM	PM
Lv Providence		8.30	8.30	3.00
Lv Springfield		9.25	9.25	3.50
Ar New York (Penna. Sta.)		10.03	10.03	4.20
Lv New York (Penna. Sta.)		2.20	2.40	10.00
Lv Newark		2.35	2.55	10.15
Lv Philadelphia (30th St.)		4.02	4.25	11.42
Lv Baltimore		5.35	6.08	1.30
Ar Washington		6.20	6.50	2.15
Lv Washington	10.50	6.40	7.10	3.10
Lv Richmond	1.30	9.15	9.45	6.30
Lv Charleston	9.40	3.35	4.09	3.10
Lv Savannah	12.30	5.30	6.05	5.40
Ar Jacksonville	a 3.30	8.00	8.55	8.30

(a) Sleepers may be occupied until 7:30 A.M.

### No. 375—EVERGLADES

Sleepers Washington-Jacksonville.  
Coaches Washington-Jacksonville.  
Dining Car Service.

### No. 1—East Coast CHAMPION

Coaches New York-Miami.  
Sleepers New York-Miami.  
Bar-Lounge  
Tavern-Lounge Obs.  
2 Dining Cars.

### No. 91—MIAMIAN—West Coast

#### Champion

Coaches New York-Miami.  
Sleepers New York-Miami.  
Sleeper Washington-Miami.  
Tavern-Lounge.  
Dining Car Service.

### No. 75—HAVANA SPECIAL

Sleeper New York-Miami.  
Coaches New York-Miami.  
Dining Car Service.

## Jacksonville

## Washington-Philadelphia-New York-Boston

	ACL-RF&P- PENNA.-NYNH&H			
	376	76 110	2 104	92 194
Lv Jacksonville	a 11.50	8.10	4.55	8.45
Ar Savannah	2.45	11.00	7.20	11.10
Ar Charleston	4.55	1.10	9.02	12.52
Ar Richmond	1.15	10.05	3.40	7.35
Ar Washington	4.15	1.10	6.20	10.10
Lv Washington		2.15	6.40	10.40
Ar Baltimore		2.58	7.22	11.21
Ar Philadelphia (30th St.)		4.57	9.07	12.51
Ar Newark		6.42	10.34	2.14
Ar New York (Penna. Sta.)		7.05	10.50	2.30
Lv New York (Penna. Sta.)		10.00	1.00	3.00
Ar Springfield		2.35	4.10	6.12
Ar Providence		1.35	4.12	6.40
Ar Boston		2.25	5.00	7.30

(a) Sleepers open 9:30 P.M.

### No. 376—EVERGLADES

Sleepers Jacksonville-Washington.  
Coaches Jacksonville-Washington.  
Dining Car Service.

### No. 2—East Coast CHAMPION

Coaches Miami-New York.  
Sleepers Miami-New York.  
Bar-Lounge Car.  
Tavern-Lounge Obs.  
2 Dining Cars.

### No. 92—MIAMIAN—West Coast

#### Champion

Coaches Miami-New York.  
Sleepers Miami-New York.  
Sleeper Miami-Washington.  
Tavern-Lounge Car.  
Dining Car Service.

### No. 76—HAVANA SPECIAL

Sleeper Miami-New York.  
Coaches Miami-New York.  
Dining Car Service.

# CONNECTIONS AT JACKSONVILLE

## DIXIE FLYER AND DIXIE LIMITED

18		94		ACL-C of Ga.-NC&St.L-L&N-C&EI		95		17	
AM	PM	AM	PM	AM	PM	AM	PM	AM	PM
7.45	9.00	Lv	(ET)	Jacksonville	(ET)	Ar	7.45	9.00	
12.35	2.00	Ar	(ET)	Albany	(ET)	Lv	2.50	4.20	
6.05	8.00	Ar	(ET)	Atlanta	(ET)	Lv	9.05	10.40	
10.40	1.30	Ar	(ET)	Chattanooga	(ET)	Lv	3.55	6.20	
2.00	5.15	Ar	(CT)	Nashville	(CT)	Lv	10.15	1.25	
7.00	10.00	Ar	(CT)	Evansville	(CT)	Lv	5.25	8.05	
2.10	b 5.20	Ar	(CT)	Chicago	(CT)	Lv	10.15	12.30	
12.20	a 7.50	Ar	(CT)	St. Louis	(CT)	Lv	10.50	2.45	

(a) Coach passengers arrive St. Louis 6:15 a. m. (b) Sleepers may be occupied until 7:00 a. m.

### Nos. 94 and 95—DIXIE FLYER—

Sleepers Jacksonville-Chicago.  
Dining Car Service.  
Coaches Jacksonville-Chicago.

### Nos. 18 and 17—DIXIE LIMITED—

Coaches Jacksonville-Atlanta  
Atlanta-Chicago.

## THE SEMINOLE

18		ACL-Cent. of Ga.-Ill.Cent.		17		
AM	PM	AM	PM	AM	PM	
7.45	Lv	(ET)	Jacksonville	(ET)	Ar	9.00
9.10	Ar	(ET)	Waycross	(ET)	Lv	7.30
12.35	Ar	(ET)	Albany	(ET)	Lv	4.20
3.00	Ar	(ET)	Columbus	(ET)	Lv	1.55
6.40	Ar	(CT)	Birmingham	(CT)	Lv	8.45
3.34	Ar	(CT)	North Cairo	(CT)	Lv	11.41
7.45	Ar	(CT)	St. Louis	(CT)	Lv	6.45
11.30	Ar	(CT)	Chicago	(CT)	Lv	4.00

### Nos. 18-17—SEMINOLE—

Sleepers Jacksonville-Chicago.  
Sleeper Miami-Chicago.

Coaches Jacksonville-Chicago.  
Dining Car Service.

## THE SOUTHLAND

94		ACL-C. of Ga.-L&N-Penna.		95		
PM	AM	PM	AM	PM	AM	
9.00	Lv	(ET)	Jacksonville	(ET)	Ar	7.45
8.00	Ar	(ET)	Atlanta	(ET)	Lv	9.05
1.35	Ar	(ET)	Knoxville	(ET)	Lv	3.10
9.25	Ar	(ET)	Cincinnati	(ET)	Lv	8.00
2.05	Ar	(ET)	Columbus	(ET)	Lv	4.15
9.15	Ar	(ET)	Cleveland	(ET)	Lv	9.00
6.40	Ar	(CT)	Chicago	(CT)	Lv	11.30

### Nos. 94 and 95—THE SOUTHLAND—

Sleeper Jacksonville-Chicago.  
Sleeper Atlanta-Chicago.

Dining Car.  
Coaches Jacksonville-Cincinnati  
and Cincinnati-Chicago.

## MIAMI-KEY WEST FLORIDA GREYHOUND LINES

Through tickets may be purchased over the Florida East Coast Railway to Key West and intermediate points, reading via Florida Greyhound Lines from Miami.

Leave Miami	Arrive Key West	Leave Key West	Arrive Miami
12:30 AM	4:45 AM	7:00 AM	10:30 AM
6:00 AM	9:50 AM	9:00 AM	1:15 PM
8:00 AM	12:15 PM	11:00 AM	3:15 PM
9:00 AM	12:45 PM	12:30 PM	4:45 PM
10:00 AM	2:15 PM	3:00 PM	7:15 PM
12:01 PM	4:15 PM	3:45 PM	7:30 PM
3:00 PM	7:15 PM	5:00 PM	9:15 PM
6:00 PM	9:30 PM	7:00 PM	11:15 PM
8:00 PM	12:15 AM	12:30 AM	4:45 AM

# CONNECTIONS AT JACKSONVILLE

## PONCE DE LEON—ROYAL PALM

Southern Ry-Cincinnati-NYC System				1		3	
4		2		PM		AM	
Via Valdosta							
10.00	9.00	Lv. (ET)	Jacksonville	(ET)	Ar	7.55	7.15
5.35	4.10	Ar (ET)	Macon	(ET)	Lv	1.20	11.55
8.00	6.35	Ar (ET)	Atlanta	(ET)	Lv	11.00	9.40
12.40	10.50	Ar (ET)	Chattanooga	(ET)	Lv	6.40	5.20
9.55	7.55	Ar (ET)	Cincinnati	(ET)	Lv	9.15	8.45
Via Toledo							
5.00	2.30	Ar (ET)	Toledo	(ET)	Lv	12.33	1.15
7.00	4.00	Ar (ET)	Detroit	(ET)	Lv	11.00	11.30
6.55	3.45	Ar (ET)	Cleveland	(ET)	Lv	12.30	11.50
Via Indianapolis							
1.35	10.35	Ar (CT)	Indianapolis	(CT)	Lv	5.22	4.40
7.30	2.50	Ar (CT)	Chicago	(CT)	Lv	1.00	11.45

Nos. 2 and 1—PONCE DE LEON — Nos. 4 and 3—ROYAL PALM—  
 Sleeper Jacksonville-Cincinnati. Sleeper Miami-Buffalo.  
 Sleeper Jacksonville-Cleveland. Sleeper Miami-Detroit.  
 Dining Car Service. Sleeper Jacksonville-Chicago.  
 Coaches Jacksonville-Cincinnati. Dining Car Service.  
 Coaches Jacksonville-Cincinnati. Coach Miami-Detroit.

## KANSAS CITY—FLORIDA SPECIAL

Southern-Frisco				8-23	
24-7		Via Jesup		AM	
9.05	Lv. (ET)	Jacksonville	(ET)	Ar	7.30
3.55	Ar (ET)	Macon	(ET)	Lv	1.00
6.30	Ar (ET)	Atlanta	(ET)	Lv	10.45
11.30	Ar (CT)	Birmingham	(CT)	Lv	4.35
6.45	Ar (CT)	Memphis	(CT)	Lv	10.10
7.40	Ar (CT)	St. Louis	(CT)	Lv	11.00
10.00	Ar (CT)	Tulsa	(CT)	Lv	9.45
7.30	Ar (CT)	Kansas City	(CT)	Lv	11.30

Sleeper Miami-Kansas City. Dining Car Service.  
 Sleepers Jacksonville-Kansas City. Coaches Jacksonville-Kansas City.

## SKYLAND SPECIAL

Southern Railway System				10-23	
24-9		Via Jesup		AM	
9.05	Lv. (ET)	Jacksonville	(ET)	Ar	7.30
12.30	Ar (ET)	Savannah	(ET)	Lv	3.45
4.25	Ar (ET)	Columbia	(ET)	Lv	11.00
8.05	Ar (ET)	Charlotte	(ET)	Lv	6.40
10.35	Ar (ET)	Greensboro	(ET)	Lv	9.50
8.05	Ar (ET)	Spartanburg	(ET)	Lv	7.55
10.35	Ar (ET)	Hendersonville	(ET)	Lv	5.34
11.30	Ar (ET)	Asheville	(ET)	Lv	4.45

Sleeper Jacksonville-Asheville. Through Coach Jacksonville-Asheville.  
 Sleeper Jacksonville-Charlotte. Restaurant-lounge.

## JACKSONVILLE AND NEW ORLEANS

SAL-Chattahoochee-L&N				38		36	
39		37		AM		PM	
5.00	9.20	Lv (ET)	Jacksonville	(ET)	Ar	9.00	6.30
8.25	2.00	Ar (ET)	Tallahassee	(ET)	Lv	5.40	2.00
9.35	3.30	Ar (ET)	Chattahoochee	(ET)	Lv	4.35	12.50
12.30	7.45	Ar (CT)	Pensacola	(CT)	Lv	11.39	6.30
1.40	Ar (CT)	Flomaton	(CT)	Lv	10.30	4.30	
3.30	Ar (CT)	Mobile	(CT)	Lv	8.45	2.45	
7.10	Ar (CT)	New Orleans	(CT)	Lv	5.00	11.00	

37-36— Coaches: Jacksonville-Flomaton-  
New Orleans.  
 39-38—GULF WIND  
 Sleepers Jacksonville-N. Orleans.  
 Dining Car Service.  
 Coaches Jacksonville-New Orleans.

# FLORIDA SERVICE

## ATLANTIC COAST LINE

DAILY								
75	89	91			80	92	76	
PM	AM	AM	Lv.	Ar.	PM	PM	AM	
10.00	11.15	9.35	Lv.	Jacksonville	Ar	6.30	8.10	6.30
11.23	12.45	10.44	Ar.	Palatka	Lv	4.09	6.48	4.45
12.51	2.20	11.44	Ar.	DeLand	Lv	2.20	5.50	3.14
f 2.55	f 2.55	f 2.55	Ar.	Benson Jct.	Lv	2.05	5.28	2.45
1.30	3.15	12.10	Ar.	Sanford	Lv	1.45	5.28	2.45
2.10	3.55	12.36	Ar.	Winter Park	Lv	12.55	4.52	1.30
2.30	4.10	12.50	Ar.	Orlando	Lv	12.35	4.36	1.15
3.10	4.55	1.18	Ar.	Kissimmee	Lv	11.50	4.10	12.35
3.45	5.24	1.44	Ar.	Haines City	Lv	11.15	3.45	12.05
8.09			Ar.	Sebring	Lv			7.55
10.40			Ar.	Clewiston	Lv			6.00
4.50			Ar.	Winter Haven	Lv			10.05
7.35			Ar.	Punta Gorda	Lv			7.28
8.50			Ar.	Fort Myers	Lv			6.45
4.55	6.00	2.11	Ar.	Lakeland	Lv	10.33	3.11	11.35
5.30	6.30	2.33	Ar.	Plant City	Lv	10.18	2.54	11.00
6.15	7.15	3.15	Ar.	Tampa	Lv	9.35	2.25	10.30
10.55		4.47	Ar.	Bradenton	Lv		12.35	5.30
11.30		5.10	Ar.	Sarasota	Lv		12.15	5.10

† Daily except Sunday.  
 89-80—Coaches.  
 91-92—Coaches and Pullmans.  
 75-76—Sleepers Jacksonville and Tampa-Sarasota, Jacksonville-Orlando.  
 Coaches all points.

DAILY						
37	191			192	38	
PM	AM	Lv.	Ar.	PM	AM	
11.00	9.30	Lv.	Jacksonville	Ar	8.05	6.00
1.35	11.22	Lv.	Gainesville	Lv	5.55	3.05
3.45	12.30	Ar.	Ocala	Lv	4.40	1.00
5.30	1.25	Ar.	Leesburg	Lv	3.45	11.15
8.55	3.40	Ar.	Tarpon Springs	Lv	1.49	7.35
9.35	4.04	Lv.	Clearwater	Lv	1.27	7.00
10.30	4.45	Ar.	St. Petersburg	Lv	12.55	6.15

Nos. 191-192—Coaches and Pullman.  
 37-38—Sleepers Jacksonville-St. Petersburg. Coaches.

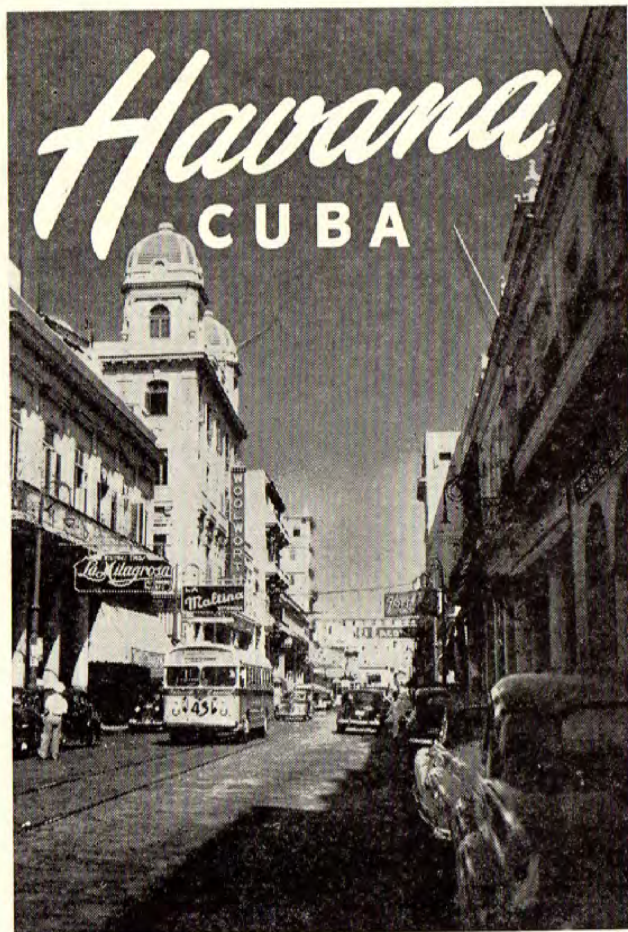
## SEABOARD AIR LINE

DAILY								
9-1	57-157	7			158-58	8	2-10	
PM	AM	AM	Lv.	Ar.	PM	PM	AM	
10.00	8.40	8.45	Lv.	Jacksonville	Ar	3.52	7.00	6.30
10.50		9.32	Ar.	Starke	Lv		6.05	5.02
11.10		9.47	Ar.	Waldo	Lv		5.50	4.40
12.25		10.40	Ar.	Ocala	Lv		5.04	3.20
1.15	10.50	11.15	Ar.	Wildwood	Lv	1.40	4.35	2.30
4.50	12.15	12.52	Ar.	Plant City	Lv	12.01	2.45	11.06
5.45	12.55	1.30	Ar.	Tampa	Lv	11.30	2.15	10.30
8.10	2.01		Ar.	Clearwater	Lv	10.20		8.50
8.55	2.45		Ar.	St. Petersburg	Lv	9.45		8.00

(a) Stops to discharge or receive passengers from or for Jacksonville.  
 Nos. 57-157 and 158-58—Sleeping cars Jacksonville-Tampa-Venice-  
 St. Petersburg. Dining car serving all meals. Reserved seat coaches  
 Jacksonville-St. Petersburg; coaches Tampa-Venice.  
 Nos. 7 and 8—Coaches, sleeping cars, Jacksonville-Tampa, Tampa-  
 Venice. Dining car Jacksonville-Wildwood.  
 Nos. 9-1 and 2-10—Coaches, all points. Sleeping cars Jacksonville-  
 St. Petersburg.

PM	AM	AM	Lv.	Ar.	PM	PM	AM	
10.00	8.40	8.45	Lv.	Jacksonville	Ar	3.52	7.00	6.30
5.45	12.55	1.30	Ar.	Tampa	Lv	11.30	2.15	10.30
a 8.05	3.30	3.30	Ar.	Palmetto-Ellenton	Lv	9.29	9.29	a 8.35
a 8.15	3.39	3.39	Ar.	Bradenton	Lv	9.23	9.23	a 8.25
a 8.45	4.10	4.10	Ar.	Sarasota	Lv	9.05	9.05	a 7.45
a 9.15	4.55	4.55	Ar.	Venice	Lv	8.20	8.20	a 7.15

(a) Via Tamiami Trail Tours Bus from and to Tampa.



## Just Overnight from Miami S. S. FLORIDA

Take a delightful overnight cruise to this gay, foreign, fascinating Paris of the Caribbean. Leaving Miami at 6:00 in the evening, you arrive Havana at 8:30 next morning, rested and refreshed. Returning, the steamship FLORIDA leaves Havana 6:00 PM, arrives Miami 8:30 AM. Schedule is so arranged as to allow you two or more full days in the Cuban capital. Consult agents for sailing dates.

ROUND TRIP EXCURSION FARE: Includes dinner, stateroom berth and breakfast aboard ship, in both directions (30-day limit. Eff. until Dec. 15).....Plus Taxes **\$40**

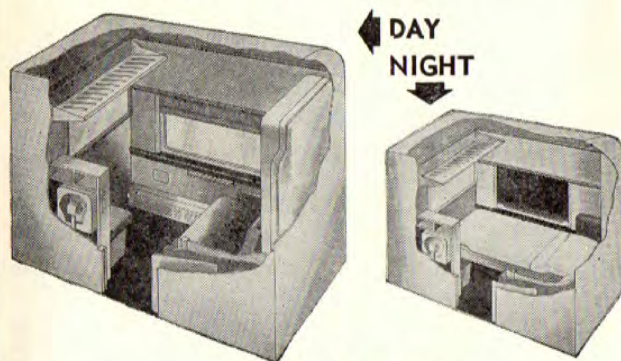
Round-Trip Fare (6 months limit)..... **\$46**

For information and reservations consult Florida East Coast Railway agents or Peninsular & Occidental Steamship Co. offices: Miami, Municipal Pier No. 2; Havana, Centro Gallego, Prado 456; General Offices, 601 Florida National Bank Bldg., Jacksonville, Fla.

### **PENINSULAR & OCCIDENTAL STEAMSHIP COMPANY**

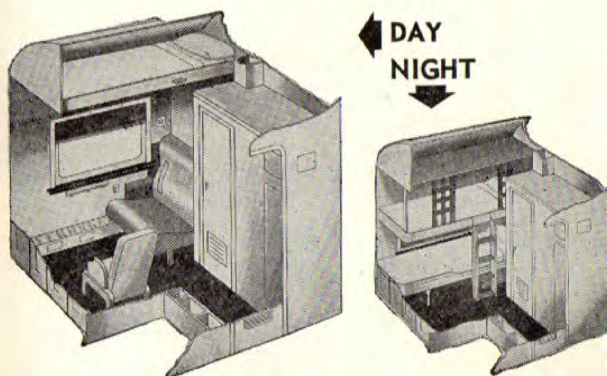
## New All Room SLEEPING CARS

New stainless steel all-room sleeping cars, providing the complete privacy of roomette and bedroom accommodations, are available on Florida East Coast Railway trains between New York and Miami; between Florida East Coast points and cities of the Mid-West.



### THE ROOMETTE

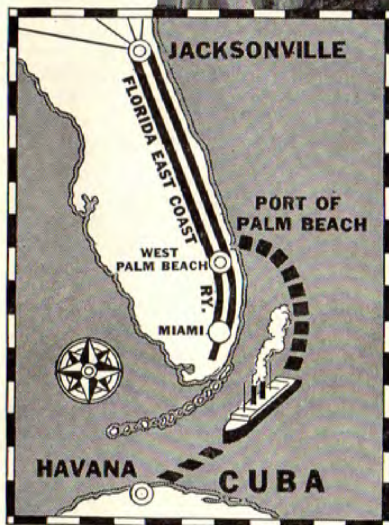
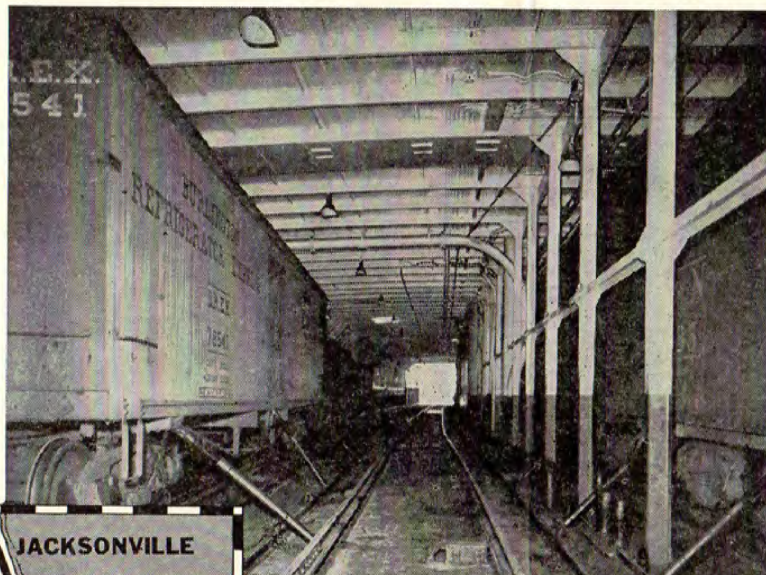
Designed for occupancy by one person, is a complete private room with its own individual toilet and lavatory facilities. A comfortable pre-made bed pulls down from the wall, replacing a wide sofa seat. Wardrobe locker, overhead baggage rack, full-length mirror, fluorescent lighting, circulating ice water, electric razor outlet are added conveniences.



### THE BEDROOM

Bedrooms, arranged in pairs, may be occupied singly by two persons, or opened up to form a spacious suite for four people. Each has comfortable facilities for day use, which convert into a restful upper and lower bed at night. Toilet and washbasin are enclosed. Other features include clothes locker, ample space for luggage, mirrors, circulating ice water, fluorescent lighting, electric razor outlet, individual temperature and air-conditioning controls.

# RAILROAD TRACKS THAT GO TO SEA



**THREE SHIPS:  
FREQUENT  
SAILINGS**

## FLORIDA-CUBA ALL-RAIL ROUTE

Down at the Port of Palm Beach, Florida, freight cars are switched directly from the tracks of the Florida East Coast Railway to tracks that go to sea,—Cuba-bound car-ferries of the West India Fruit & Steamship Company.

Aboard ship the cars are securely anchored in place by special jacks and chains as shown in the above picture. Nineteen hours later they reach Havana, where they are switched to Cuban rails, ready to roll to destination for unloading.

This convenient all-rail service to Cuba saves both time and money. The expense of special packing for marine handling is eliminated. There is no costly transfer of cargo from shore to ship and back to shore again. Shipments make the entire trip from

point of origin to destination in the same railroad car and same original packaging.

Connecting exclusively with the Florida East Coast Railway at the Port of Palm Beach, a fleet of three large 26-car capacity ferries ply between Florida and Cuba. Practically daily sailings are maintained, insuring prompt dispatch of cars upon arrival at the port, and prompt return of empties.

In addition, the West India Fruit & Steamship Company offers shippers valuable aid in handling export documents, clearing customs, and arranging other details involved in export shipment. For rates and bookings consult W. L. Heath, Traffic Manager, P. O. Box 469, West Palm Beach, Fla.

## WEST INDIA FRUIT & STEAMSHIP COMPANY

*Connects at Port of Palm Beach only with Florida East Coast Railway*

# RAIL-AUTO TRAVEL PLAN

**FOR BUSINESS**—enjoy the restfulness of train travel to your destination and then step into an automobile to make your business calls.

**FOR PLEASURE**—relax as you make your trip by train; then use an automobile for side-trips and sightseeing.

Your ticket agent will supply you with a list of cities at which "Driveurself" service is available, and can make all arrangements.

*The* **RAILROAD HOUR**

FAMOUS MUSICAL SHOWS • GREAT STARS OF  
STAGE  
SCREEN  
RADIO

WITH GORDON MacRAE  
**NBC NETWORK**  
Every Monday Night

Presented by the AMERICAN RAILROADS

**ALASKA**

**FOR SHIPPING HELP**  
*Anywhere!*

use the service that's

- fast
- friendly
- convenient
- dependable
- economical

**RAILWAY EXPRESS AGENCY**

**ALWAYS ASK THE EXPRESS MAN!**

## Passenger Traffic Department

SCOTT M. LOFTIN and JOHN W. MARTIN, Trustees.  
GEO. L. OLIVER, Passenger Traffic Manager \_\_\_\_\_ St. Augustine, Fla.  
C. GARD OLIVEROS, General Passenger Agent \_\_\_\_\_ St. Augustine, Fla.

**NEW YORK 17, N. Y.:** Telephone: Murray Hill 2-8483  
L. J. Irvin, Asst. General Passenger Agent \_\_\_\_\_ 16 East 44th Street  
A. C. Barnes, Division Passenger Agent \_\_\_\_\_ 16 East 44th Street  
Herbert M. VanDusen, Passenger Agent \_\_\_\_\_ 16 East 44th Street

**JACKSONVILLE 2, FLA.:** Telephone: 5-2227  
J. D. Ingraham, Asst. General Passenger Agent \_\_\_\_\_ 235 W. Forsyth St.  
M. E. Fields, District Passenger Agent \_\_\_\_\_ 235 W. Forsyth St.  
W. F. Busch, City Passenger Agent \_\_\_\_\_ 235 W. Forsyth St.  
R. C. Southard, City Ticket Agent \_\_\_\_\_ 235 W. Forsyth St.  
O. B. Acker, Terminal Ticket Agent, Jacksonville Terminal Station

**WEST PALM BEACH, FLA.:** Telephone: 5151  
F. B. May, District Passenger Agent \_\_\_\_\_ 309 Datura Street  
L. W. Harvey, City Ticket Agent \_\_\_\_\_ 309 Datura Street

**FT. LAUDERDALE, FLA.:** Telephone: 3-2501  
R. P. Ferguson, District Passenger Agent \_\_\_\_\_ 23 East Las Olas Blvd.  
G. V. Ellis, City Ticket Agent \_\_\_\_\_ 23 East Las Olas Blvd.

**MIAMI 32, FLA.:** Telephone: 3-0461  
R. T. Jeffries, Asst. General Passenger Agent \_\_\_\_\_ Ingraham Building  
C. D. Schooler, District Passenger Agent \_\_\_\_\_ Ingraham Building  
H. K. North, City Ticket Agent \_\_\_\_\_ Ingraham Building  
Wm. Wooten, Ticket Agent \_\_\_\_\_ Depot  
R. M. Mehaffey \_\_\_\_\_ Station Master

**HAVANA, CUBA:**  
Joe F. Ellis, Division Passenger Agent, Peninsular & Occidental Steamship Co., Centro Gallego, Prado 456.

### LOCAL AGENTS

ST. AUGUSTINE	J. L. Hartley	Ticket Agent
DAYTONA BEACH	T. E. Sossamon	Ticket Agent
NEW SMYRNA BEACH	H. G. Hinson	Agent
FORT PIERCE	J. W. Corbett	Agent
WEST PALM BEACH	F. W. Maxwell	Agent
FORT LAUDERDALE	C. M. Hooten	Agent
MIAMI	Wm. Wooten	Depot Ticket Agent

## Freight Traffic Department

SCOTT M. LOFTIN and JOHN W. MARTIN, Trustees.  
H. E. C. HAWKINS, Chief Freight Traffic Officer \_\_\_\_\_ St. Augustine, Fla.  
D. B. GREEN, Asst. Chief Freight Traffic Officer \_\_\_\_\_ St. Augustine, Fla.  
R. K. PARSONS, Freight Traffic Manager \_\_\_\_\_ St. Augustine, Fla.  
G. V. JONES, Asst. General Freight Agent \_\_\_\_\_ St. Augustine, Fla.  
C. D. MEITIN, Asst. to Freight Traffic Manager \_\_\_\_\_ St. Augustine, Fla.

**NEW YORK 5:**  
C. W. Kirtland, Executive General Agent \_\_\_\_\_ Room 1822, 120 Broadway  
Robert J. Souther, Commercial Agent.

**ST. LOUIS 1, MO.:**  
Edward Ottens, General Western Agent \_\_\_\_\_ 2094 Rwy. Exchange Bldg.  
W. H. Gullfooy, Commercial Agent.

**CINCINNATI 2, OHIO:**  
A. L. McDonald, Commercial Agent \_\_\_\_\_ 536 Dixie Terminal Bldg.

**ATLANTA 3, GA.:**  
Duncan Haigler, General Agent \_\_\_\_\_ 829 Healey Building  
R. L. Colquitt, Commercial Agent.

**JACKSONVILLE 4, FLA.:**  
A. R. Austin, Commercial Agent \_\_\_\_\_ 10 Jefferson Street

**FORT PIERCE, FLA.:**  
John E. Corbett, Traveling Freight Agent.

**WEST PALM BEACH, FLA.:**  
W. D. Brunson, Division Freight Agent \_\_\_\_\_ 311 Datura Street  
R. E. Hotard, Commercial Agent \_\_\_\_\_ Belle Glade

**FORT LAUDERDALE, FLA.:**  
K. E. Williams, Commercial Agent \_\_\_\_\_ 23 East Las Olas Blvd.

**MIAMI 32, FLA.:**  
F. P. Oldfather, Asst. Gen. Freight Agent \_\_\_\_\_ Ingraham Building  
R. E. Balick, Commercial Agent \_\_\_\_\_ Ingraham Building  
W. M. Thompson, Jr., Commercial Agent \_\_\_\_\_ Ingraham Building  
A. T. Mitchell, Commercial Agent \_\_\_\_\_ Ingraham Building  
A. J. Westbrook, Commercial Agent \_\_\_\_\_ Ingraham Building

### LOCAL AGENTS

JACKSONVILLE	M. M. Parker	Agent
ST. AUGUSTINE	E. H. Lott	Agent
DAYTONA BEACH	C. E. Richards	Agent
FORT PIERCE	J. W. Corbett	Agent
WEST PALM BEACH	F. W. Maxwell	Agent
PORT OF PALM BEACH	F. W. Maxwell	Agent
(Post Office Address: West Palm Beach).		
FORT LAUDERDALE	C. M. Hooten	Agent
PORT EVERGLADES	C. M. Hooten	Agent
(Post Office Address: Ft. Lauderdale).		
MIAMI	P. C. Brown	Agent

TRAVEL IN LUXURY AT

# Reduced Round-trip Fares

30-Day Limit

In Effect Until November 15, 1950



Big, comfortable air-conditioned coaches with individual reclining seats, wide-vision windows, plenty of leg-room and baggage space are standard Florida East Coast Railway equipment.



You can stroll back to the delightful full-length tavern-lounge car — read, watch the passing scenery, or enjoy a refreshing drink while the miles speed by.



All the comforts of home are provided by the clean coach dressing rooms with their modern stainless steel equipment. No need to wait until the end of your journey to freshen up.

Why risk highway hazards and inconveniences, when you can travel so comfortably and inexpensively by rail? Let an experienced engineer do the driving while you relax in a cool, completely air-conditioned train with plenty of room to move about and every personal convenience at your command.

## Round-Trip in Coaches

30-DAY LIMIT

(15% Federal tax not included)

In Effect Until November 15, 1950

BETWEEN	Jackson- Ville	Daytona Beach	West Palm Beach	Miami
Jacksonville.....		\$ 4.15	\$11.25	\$13.80
St. Augustine.....	\$ 1.45	2.75	9.90	12.40
Daytona Beach.....	4.15	.....	7.15	9.65
New Smyrna Beach.....	4.70	.60	6.60	9.10
Titusville.....	5.85	1.70	5.45	7.95
Cocoa-Rockledge.....	6.60	2.45	4.80	7.25
Melbourne.....	7.35	3.20	3.95	6.45
Vero Beach.....	8.55	4.45	2.70	5.20
Fort Pierce.....	9.10	5.00	2.20	4.70
Stuart.....	9.85	5.75	1.45	3.95
West Palm Beach.....	11.25	7.15	.....	2.55
Lake Worth.....	11.55	7.40	.30	2.25
Delray Beach.....	11.95	7.80	.70	1.90
Pompano Beach.....	12.50	8.45	1.35	1.25
Fort Lauderdale.....	12.85	8.70	1.65	.95
Hollywood.....	13.05	9.00	1.90	.70
Miami.....	13.80	9.65	2.55	.....

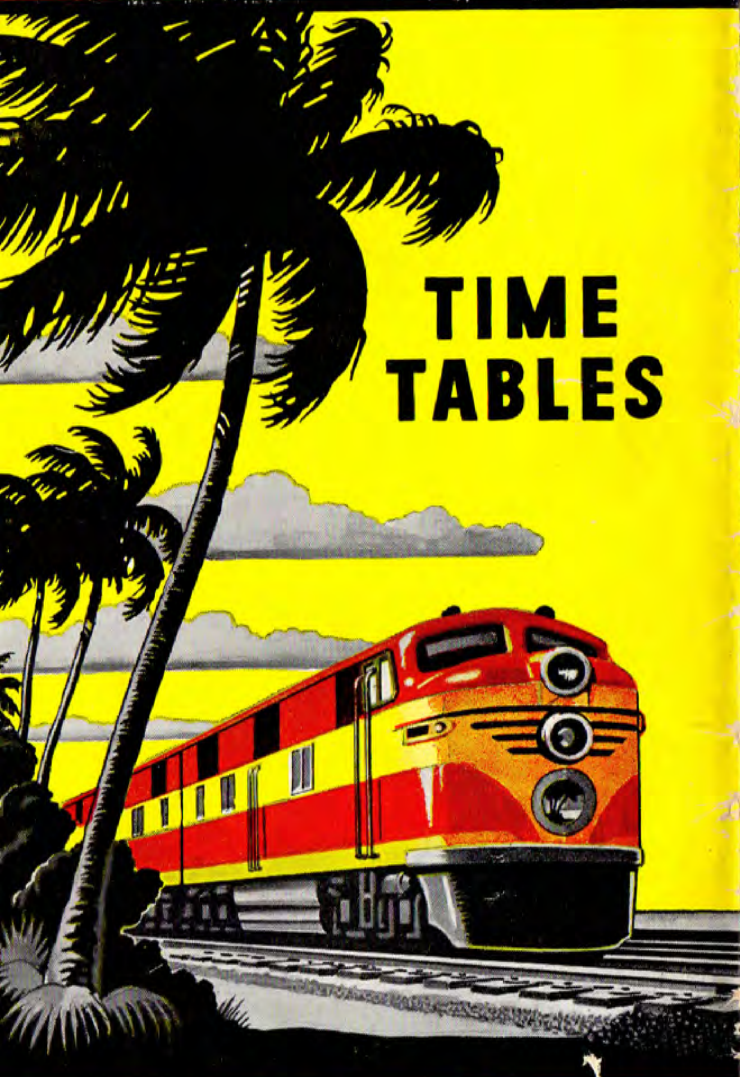
Correspondingly low round-trip fares (30-day limit) apply until November 15 over the Florida East Coast Railway to and from such points as New York, Washington, Atlanta, Birmingham, Cincinnati, the Carolina Mountain resorts and many other destinations. Ask your local railroad agent to quote them.

Issued September 23, 1950

Issued September 23, 1950

# FLORIDA EAST COAST *Railway*

# FLORIDA EAST COAST *Railway*



**TIME  
TABLES**



**TIME  
TABLES**

**FLORIDA'S ONLY DOUBLE TRACK ROUTE**

**FLORIDA'S ONLY DOUBLE TRACK ROUTE**