

Pere Marquette

RAILWAY

Route of the Pere Marquettes



PASSENGER TIME TABLE

CORRECTED TO

SEPTEMBER 8, 1946

Pere Marquette

RAILWAY

Route of the Pere Marquettes



PASSENGER TIME TABLE

CORRECTED TO

SEPTEMBER 8, 1946



The scientifically designed "Sleepy Hollow" seats on the streamlined Pere Marquettes are the supremely restful results of thousands of tests conducted by one of America's leading anthropologists at a famous university. Known as "the seats that went to college", these deep cushioned seats afford full range of positions to suit the traveler's every wish. They are equipped with adjustable footrest to assure relaxed full-length support for total comfort.



Roll in luxury on

The PERE MARQUETTES

SUGGESTIONS FOR USE OF THIS FOLDER TO AID YOUR TRIP

THE STATION INDEX on pages 18 and 19 shows stations served by Pere Marquette Railway trains. The numbers shown to right of station are the numbers of the tables (not pages) in this folder in which you will find the particular station you are interested in, and the train service thereto.

A.M. or P.M.—The time from 12:01 midnight to and including 12:00 noon is shown in light faced figures and the time from 12:01 noon to and including 12:00 midnight in heavy faced figures.

LEAVE OR ARRIVE TIME: The time figure shown opposite a station is the leaving time unless indicated as "Ar"—arriving time. In many cases both arrive and leave time are shown.

TRAIN STOPS: Trains make regular stops at stations where time figures only are shown. When a symbol or letter appears in train column opposite station this indicates train only stops on certain conditions. Note carefully when any symbol or letter appears in table. The explanation thereof is given under explanation of reference marks at bottom of each page. Where trains make a conditional stop, advance notice must be given to agent when passenger wishes to board train or to train conductor when passenger wishes to get off. Where only . . . appears in train column, train does not stop.

READ UP OR DOWN: Where station columns in tables appear in center of table the schedule figures on the left of stations should be read from top to bottom and the schedule figures on the right of stations should be read from bottom to top (for example see table 6, page 7). In other tables, read down as indicated at top of table.

STATIONS BETWEEN RULES in tables are on lines branching out from the line covered by table and show connecting service. Occasionally through cars are carried to and from such points. If so information is shown under "Equipment."

EQUIPMENT: When equipment, other than coaches, is carried on trains, it is shown with table covering that service. All trains carry coaches.

TRAINS USUALLY OPERATE daily or daily except Sunday, some trains less frequently. The days on which trains operate are shown at top of train columns and when space does not permit this, it is shown by reference mark and explanation at bottom of page.

THE FOLLOWING STANDARD REFERENCE MARKS are used in this folder as necessary:

*—Daily.

†—Daily except Sunday.

§—Sunday only.

‡—Daily except Saturday.

||—Meals.

†—Daily except Monday.

f—Train stops on flag to pick up passengers or on request to let off.

C. T.—Central Time.

E. T.—Eastern Time.

TABLE OF CONTENTS

	Page
Auto Ferry Service and Rates Across Lake Michigan	10, 11
Equipment of Trains	2, 3, 4, 6, 7, 8
Freight Service Only Stations	14, 15
General Information	22
Helpful Information When Using This Timetable	1
Index to Stations	18, 19
Map of Pere Marquette Railway and Connections	12, 13
Parlor Car fares	16
Pullman Sleeping Car Fares	16, 17
Railroad Fares	16, 17
Reservations	17
Traffic Department Representatives and Addresses	20, 21
Train Service and Equipment:	
Chicago-Grand Rapids	2, 3
Detroit-Lansing-Grand Rapids	4
Detroit-Toledo-Richmond, Va.-Norfolk	8
Detroit-Toledo-Saginaw-Bay City	6
Grand Rapids-Chicago	6
Grand Rapids-Lansing-Detroit	2, 3
Grand Rapids-Traverse City-Petoskey-Bay View	7
Saginaw-Detroit-Toledo	6
Saginaw-Manistee-Ludington	6
Walkerville-Chatham	8

From CHICAGO To
ST. JOSEPH • BENTON HARBOR • HOLLAND
MUSKEGON • GRAND RAPIDS

TABLE 1

Miles	EASTBOUND—READ DOWN	6 8 2		
		Ex. Sun.	Daily	Daily
	(Central Time)	AM	PM	PM
0	Lv Chicago Grand Central Station	10.50	4.50	11.30
9	Lv Chicago, 63rd St. B. & O. Station	11.11	5.13	11.55
19	Lv South Chicago B. & O. Station	11.29	5.31	12.15
59	Lv Michigan City	A 12.18	f 1.05	
	(Eastern Time)			
69	Lv New Buffalo	1.35	7.35	2.30
75	Lv Lakeside			
80	Lv Sawyer			
84	Lv Bridgman			
89	Lv Stevensville			
96	Lv St. Joseph	2.07	8.06	3.09
98	Lv Benton Harbor	2.17	8.14	3.29
104	Lv Riverside			f 3.39
107	Lv Coloma	2.30		f 3.47
110	Lv Watervliet	2.35	D 8.30	3.55
115	Lv Hartford	2.42		4.13
120	Lv McDonald			
124	Lv Bangor	2.53	8.46	4.32
127	Lv Breedsville			
131	Lv Grand Junction			f 4.45
136	Lv Pullman			D 4.57
138	Lv Bravo			
144	Lv Fennville	3.18	D 9.08	5.10
148	Lv New Richmond			
151	Lv East Saugatuck			
159	Ar Holland	3.45	9.35	5.33
0	Lv Holland		9.45	6.10
10	Lv West Olive			f 6.33
21	Lv Grand Haven		10.16	7.00
31	Lv Muskegon Heights		10.33	7.25
34	Ar Muskegon		10.40	7.40
159	Lv Holland	3.45	9.35	5.50
164	Lv Zeeland			f 6.02
173	Lv Hudsonville			f 6.16
178	Lv Grandville			f 6.28
184	Ar Grand Rapids	4.25	10.10	6.45
332	Ar Traverse City			f 12.46
394	Ar Charlevoix			f 2.47
409	Ar Petoskey			f 3.20
410	Ar Bay View			
	(Eastern Time)	PM	PM	PM

EQUIPMENT

TRAIN No. 2—NIGHT EXPRESS—Daily

Sleeping Cars—

Chicago to Grand Rapids—14-Sections. (Car 21.)

Chicago to Muskegon—12-Sections. 1 Drawing Room. (Car 202.) Sleepers ready at 9:00 p.m., C.T. may be occupied at Grand Rapids and Muskegon until 8:00 a.m., E.T.

Chicago to Grand Rapids-Traverse City-Petoskey—(8-Sections, 3 Double Bedrooms, 1 Drawing-room). (Car 22.) Daily except Saturday.

Coaches.

TRAIN No. 8—Daily

Between Chicago and Grand Rapids

Pere Marquette Parlor Car
Dining Car
Coaches

Between Chicago and Muskegon

Pere Marquette Parlor Car
Coaches

TRAIN No. 6—Except Sunday

Between Chicago and Grand Rapids

Pere Marquette Parlor Car
Dining Car
Coaches

REFERENCE MARKS

†—Daily except Sunday.

‡—Daily except Monday.

A—Stops on flag to pick up passengers only for Grand Rapids and beyond and Muskegon. Does not handle baggage.

D—Stops on request to let off pay passengers only from Chicago.

f—Stops on flag to pick up or on request to let off passengers.

Italic Type—all time shown in *Italic Type* indicates connecting service.

TIME from 12.01 midnight to 12.00 noon is shown by LIGHT faced figures, and time from 12.01 noon to 12.00 midnight by HEAVY faced figures.

All schedules in this folder are in Standard Time—
Central or Eastern as shown

To CHICAGO From
GRAND RAPIDS • MUSKEGON • HOLLAND
BENTON HARBOR • ST. JOSEPH

TABLE 2

	WESTBOUND—READ DOWN	3 5 5 7			
		Ex. Sun.	Ex. Sun. & Hol. (M)	Sun. & Hol. (S)	Daily
	(Eastern Time)	AM	PM	PM	PM
Lv Bay View	} See table 6 for intermediate Stations }				
Lv Petoskey					† 4.00
Lv Charlevoix					† 4.35
Lv Traverse City					† 6.30
Lv Grand Rapids		11.40	4.50	5.50	12.35
Lv Grandville					
Lv Hudsonville					f 12.58
Lv Zeeland					f 1.10
Ar Holland		12.18	5.26	6.26	1.30
Lv Muskegon			4.00	5.05	11.50
Lv Muskegon Heights			4.10	5.15	
Lv Grand Haven			4.26	5.31	12.17
Lv West Olive					
Ar Holland			5.05	6.10	12.48
Lv Holland		12.18	5.29	6.29	1.45
Lv East Saugatuck					
Lv New Richmond					f 2.10
Lv Fennville		12.43	C 5.54	E 6.54	2.24
Lv Bravo					f 2.33
Lv Pullman					2.41
Lv Grand Junction					2.54
Lv Breedsville					
Lv Bangor		1.07	6.18	7.18	3.12
Lv McDonald					f 3.21
Lv Hartford		1.20		C 7.27	3.32
Lv Watervliet		1.29	C 6.33	C 7.33	3.42
Lv Coloma					f 3.47
Lv Riverside					
Lv Benton Harbor		1.47	6.50	7.50	4.17
Lv St. Joseph		1.55	6.57	7.57	4.38
Lv Stevensville					
Lv Bridgman					
Lv Sawyer					
Lv Lakeside					
Lv New Buffalo		2.27	7.28	C 8.28	5.15
	(Central Time)				
Lv Michigan City		B 1.43			4.45
Lv South Chicago B. & O. Station		2.29	7.28	8.28	5.41
Lv Chicago, 63rd St. B. & O. Station		2.51	7.50	8.50	6.05
Ar Chicago Grand Central Station		3.15	8.15	9.15	6.30
	(Central Time)	PM	PM	PM	AM

EQUIPMENT

TRAIN No. 7—NIGHT EXPRESS—

Daily

Sleeping Cars—

Grand Rapids to Chicago—14-Sections. (Car 71.)

Muskegon to Chicago—12-Sections, Drawing Room (Car 281.) Sleepers ready at Grand Rapids 9:30 p.m., and Muskegon 9:30 p.m., E.T., may be occupied at Chicago until 7:15 a.m., C.T.

Petoskey-Traverse City-Grand Rapids to Chicago—8 Sections, 3 Double Bedrooms, 1 Drawing-room. (Car 72.) Daily except Sunday.

Coaches.

TRAIN No. 3—Except Sunday

Between Chicago and Grand Rapids

Pere Marquette Parlor Car
Dining Car
Coaches

TRAIN No. 5—Daily

Between Chicago and Grand Rapids

Pere Marquette Parlor Car
Dining Car
Coaches

Between Chicago and Muskegon

Pere Marquette Parlor Car
Coaches

REFERENCE MARKS

†—Daily except Sunday.

‡—Daily except Saturday.

⊖—Runs Sundays, also on the following Holidays, May 30th, July 4th, Labor Day, Thanksgiving, Christmas and New Year's.

⊕—Runs daily except Sunday; Will not run May 30th, July 4th, Labor Day, Thanksgiving, Christmas and New Year's.

B—Stops on request to let off pay passengers only from Grand Rapids and beyond. Does not handle baggage.

C—Stops on flag to pick up pay passengers only for South Chicago, 63rd Street and Grand Central Station, Chicago. Will also stop on request to let off pay passengers only from Grand Rapids or Muskegon and beyond.

E—Stops for pay passengers only—on flag to pick up or on request to let off.

f—Stops on flag to pick up or on request to let off passengers.

Italic Type—all time shown in *Italic Type* indicates connecting service.

DETROIT • LANSING

GRAND RAPIDS

ROUTE OF THE PERE MARQUETTES

TABLE 3

Miles	WESTBOUND	3 Daily	5 Ex. Sun.	7 Daily	77 Sun. & Holidays
	(Eastern Time)	AM	PM	PM	PM
○	Lv Toledo.....	6.05			
○	Lv Monroe.....	6.44			
○	Ar Detroit.....	8.00			
○	Lv Detroit.....	8.15	12.15	5.15	A 8.55
24	Lv Plymouth.....	8.45	12.47	5.45	9.25
45	Lv Brighton.....		1.09		
54	Lv Howell.....		1.20		
62	Lv Fowlerville.....		1.29		
73	Lv Williamston.....		1.41		
87	Lv Lansing the Capital.....	9.47	2.04	6.47	10.30
99	Lv Grand Ledge.....		2.18		f 10.45
120	Lv Lake Odessa.....		2.40		11.08
152	Ar Grand Rapids.....	10.55	3.15	7.55	11.45
○	Lv Grand Rapids (E.T.).....	† 11.40	4.50	12.35	
○	Ar Chicago (C.T.).....	† 3.15	8.15	6.30	
○	Lv Grand Rapids Penn. R.R. (E.T.).....	B† 2.55			
○	Ar Muskegon Penn. Station (E.T.).....	B† 2.10			

Miles	EASTBOUND	2 Daily	4 Ex. Sun.	6 Daily	66 Sun. & Holidays	18 Daily
	(Eastern Time)	PM	AM	PM	PM	AM
○	Lv Muskegon Penn. Station.....		B 10.50	† 3.35		
○	Ar Grand Rapids Penn. R.R.....		B 11.59	† 4.50		
○	Lv Chicago (C.T.).....	11.30		† 10.50		
○	Ar Grand Rapids (E.T.).....	6.45		† 4.25		
○	Lv Grand Rapids (E.T.).....	7.50	1.00	5.25	A 9.00	
32	Lv Lake Odessa.....		1.35		9.35	
53	Lv Grand Ledge.....		1.57		f 9.57	
65	Lv Lansing the Capital.....	8.58	2.15	6.34	10.15	
79	Lv Williamston.....		2.32			
90	Lv Fowlerville.....		2.44			
98	Lv Howell.....		2.53			
107	Lv Brighton.....		3.04			
128	Lv Plymouth.....	9.59	3.28	7.34	11.19	7.25
152	Ar Detroit.....	10.30	4.00	8.05	11.50	8.00
○	Lv Detroit.....		* 5.40			
○	Ar Monroe.....		* 6.40			
○	Ar Toledo.....		* 7.20			

EQUIPMENT

THE PERE MARQUETTES

TRAINS NOS. 2, 3, 4, 5, 6, 7,

DIESEL ELECTRIC—STREAMLINED ALL COACH TRAIN

All seats are reserved and assigned in advance

TAVERN DINER

RECLINING SEAT COACHES

REFERENCE MARKS

- *—Daily. †—Daily, except Sunday.
- f—Stops on flag to pick up passengers or on request to let off passengers.
- Connection.
- CT—Central Time. ET—Eastern Time.
- Italic Type*—All times shown in *italic* type indicates connecting service.
- A—Operates Sundays only, also on the following Holidays, May 30th, July 4th, Labor Day, Thanksgiving, Christmas and New Year's.
- B—Does not run May 30 or September 2, 1946.

Setting New Records!



Fastest Schedules DETROIT • GRAND RAPIDS

THE new streamlined Pere Marquettes give you history's fastest train rides between Detroit and Grand Rapids. These swift gleaming trains operate on schedules **40 minutes less** than best previous record! Now commuters have a convenient morning departure from either city; can spend almost an entire business day at destination, and still return home by twilight.

3 Fast Trips Each Way

(Eastern Standard Time)

	DAILY		SUNDAYS AND A-HOLIDAYS	
	DAILY	WEEK DAYS	DAILY	A-HOLIDAYS
Lv Detroit	8:15 AM	12:15 PM	5:15 PM	8:55 PM
Ar Lansing	9:47 AM	2:04 PM	6:47 PM	10:30 PM
Ar Grand Rapids	10:55 AM	3:15 PM	7:55 PM	11:45 PM
Lv Grand Rapids	7:50 AM	1:00 PM	5:25 PM	9:00 PM
Lv Lansing	8:58 AM	2:15 PM	6:34 PM	10:15 PM
Ar Detroit	10:30 AM	4:00 PM	8:05 PM	11:50 PM

ALL SEATS RESERVED AT REGULAR COACH FARES

Direct Connections with THE RED ARROW to and from THE EAST

• Pere Marquette trains connect in the Fort Street Union Depot with the RED ARROW and other Pennsylvania Railroad trains to and from Pittsburgh, Philadelphia, Baltimore, Washington, New York and the East. Connection also made at Fort Street Union Depot with Wabash-Pennsylvania trains to and from Cincinnati and points south.

PERE MARQUETTE RAILWAY

**DETROIT • TOLEDO
SAGINAW • BAY CITY**

TABLE 4

Miles	NORTHBOUND	103 Ex. Su.	101 Daily	SOUTHBOUND	104 Ex. Su.	106 Daily
	(Eastern Time)	AM	AM	(Eastern Time)	PM	PM
0	Lv Toledo	* 6.05		Lv Bay City	12.25	5.40
24	Lv Monroe	* 6.44		Lv South Bay City	A12.43	A 5.58
32	Ar Detroit	* 8.00		Ar Saginaw	1.00	6.15
0	Lv Detroit	8.45	12.10	Lv Saginaw	1.10	6.30
24	Lv Plymouth	9.21	12.50	Lv Birch Run	f 1.29	
28	Lv Northville	9.31	1.06	Lv Clio	1.37	
32	Lv Novi	9.38		Lv Mt. Morris	1.45	
36	Lv Wixom	9.44	B 1.21	Ar Flint	2.02	7.17
42	Lv Milford	9.53	1.33	Lv Flint	2.12	7.27
45	Lv Highland		1.41	Lv Grand Blanc	2.30	
49	Lv Clyde		1.47	Lv Holly	2.41	7.57
52	Lv Rose Center		1.53	Lv Rose Center		
57	Lv Holly	10.15	2.08	Lv Clyde		
66	Lv Grand Blanc		2.26	Lv Highland		
74	Ar Flint	10.40	2.45	Lv Milford	3.05	8.21
74	Lv Flint	10.50	3.00	Lv Wixom	3.13	
81	Lv Mt. Morris		3.25	Lv Novi	3.21	
85	Lv Clio		3.33	Lv Northville	3.29	
91	Lv Birch Run		3.43	Lv Plymouth	3.38	8.50
107	Ar Saginaw	11.40	4.20	Ar Detroit	4.15	9.25
107	Lv Saginaw	11.50	4.35	Lv Detroit	* 5.40	
117	Ar South Bay City	B12.07	B 4.52	Ar Monroe	* 6.40	
119	Ar Bay City	12.25	5.15	Ar Toledo	* 7.20	
		PM	AM		PM	PM

EQUIPMENT

TRAINS Nos. 101, 103, 104 and 106
Between Detroit, Saginaw and Bay City
Coaches

**SAGINAW • MANISTEE
LUDINGTON**

TABLE 5

Miles	NORTHBOUND	1 Ex. Sun.	SOUTHBOUND	6 Ex. Sun.
	(Eastern Time)	AM	(Eastern Time)	PM
0	Lv Detroit	* 12.10	Lv Ludington Dock	
12	Lv Bay City		Lv Ludington	1.15
23	Lv Saginaw	6.45	Lv Scottville	1.29
32	Lv Freeland	7.02	Lv Custer	1.38
33	Lv Midland	7.28	Lv Walhalla	1.47
41	Lv Sanford	7.40	Lv Branch	1.53
47	Lv North Bradley	f 7.48	Ar Baldwin	2.05
52	Ar Coleman	8.00	Lv Bay View	
63	Ar Clare	8.26	Lv Potoskey	
68	Ar Farwell	8.33	Lv Manistee	
75	Ar Lake	8.43	M. & N. E.	
85	Ar Sears	8.59	Lv Kaleva	
88	Ar Ewart	9.07	Lv Baldwin	2.05
98	Ar Hersey	9.23	Lv Idlewild	
102	Ar Reed City	9.28	Lv Nirvana	f 2.29
108	Ar Chase	9.46	Lv Chase	f 2.35
112	Ar Nirvana	f 9.52	Lv Reed City	2.50
115	Lv Idlewild	f 9.57	Lv Hersey	2.57
120	Ar Baldwin	10.10	Lv Ewart	3.11
0	Ar Kaleva	11.40	Lv Sears	3.20
0	Ar Manistee	12.40	Lv Lake	3.38
0	Ar Potoskey	3.20	Lv Farwell	3.52
0	Ar Bay View		Lv Clare	3.59
120	Lv Baldwin	10.30	Lv Coleman	4.17
129	Lv Branch	10.42	Lv North Bradley	f 4.26
133	Lv Walhalla	10.49	Lv Sanford	f 4.35
138	Lv Custer	10.57	Lv Midland	5.05
141	Lv Scottville	11.05	Lv Freeland	f 5.22
150	Ar Ludington	11.20	Ar Saginaw	5.40
151	Ar Ludington Dock		Ar Bay City	
		AM	Ar Detroit	* 9.25
				PM

REFERENCE MARKS

*—Daily. ○—Connection. f—Stops on flag to pick up passengers or on request to let off passengers.
A—Stops on flag to pick up passengers only. CT—Central Time. ET—Eastern Time.
B—Stops on request to let off passengers from Detroit. *Italic Type*—indicates connecting service.

**GRAND RAPIDS • TRAVERSE CITY
PETOSKEY • BAY VIEW**

**NORTHBOUND—
Read Down**

TABLE 6

**SOUTHBOUND—
Read up**

Miles	101 Ex. Sun.	Mls.	106 Ex. Sun.
	PM		AM
0	*17.30	○ Lv Chicago (Central Time)	Ar * 6.30
		(Eastern Time)	
		○ Lv Detroit (Eastern Time)	Ar
	* 6.45	○ Ar Grand Rapids	Lv *12.35
	7.40	○ Lv Grand Rapids	Ar 11.15
	8.01	○ Lv Constock Park	Lv
	8.20	○ Lv Sparta	Lv f 10.41
	8.30	○ Lv Kent City	Lv f 10.32
	8.37	○ Lv Casnovia	Lv
	f 8.44	○ Lv Bailey	Lv
	8.52	○ Lv Grant	Lv f 10.12
	9.05	○ Lv Newaygo	Lv f 10.01
	9.29	○ Lv White Cloud	Lv 9.44
	f 9.57	○ Lv Brohman	Lv
	10.15	○ Lv Bitely	Lv f 9.17
		○ Ar Baldwin	Lv 9.00
	10.30	○ Lv Baldwin	Lv 2.05
	11.20	○ Ar Ludington	Lv 1.15
	*12.10	○ Lv Detroit	Ar
	110.10	○ Ar Baldwin	Lv
	10.30	○ Lv Baldwin	Ar 8.45
	f 10.58	○ Lv Peacock	Lv f 8.26
	f 11.08	○ Lv Irons	Lv f 8.16
	102	○ Lv Wellston	Lv f 8.05
	11.22	○ Lv High Bridge. (scenic view)	Lv
	11.40	○ Lv Brethren	Lv f 7.51
	12.40	○ Ar Kaleva	Lv 7.44
	10.30	○ Ar Manistee M.&N.E.	Lv 6.15
	12.00	○ Lv Manistee	Ar 8.30
	5.57	○ Ar Thompsonville	Lv 7.21
	6.15	○ Ar Beulah A.A.R.R.	Lv
		○ Ar Frankfort	Lv
	130	○ Lv Bendon	Lv f 7.02
	f 12.24	○ Lv Interlochen	Lv f 6.56
	12.31	○ Lv Grawn	Lv
	12.46	○ Ar Traverse City	Lv 6.30
	1.45	○ Lv Traverse City M.&N.E.	Ar 5.04
	2.39	○ Ar Sutton's Bay	Lv 4.21
	3.00	○ Ar Omena	Lv 3.56
	3.15	○ Ar Northport	Lv 3.40
	1.01	○ Lv Traverse City	Ar 6.30
	1.59	○ Lv Williamsburg	Lv 5.58
	1.68	○ Lv Rapid City	Lv 5.43
	1.72	○ Lv Alden	Lv 5.37
	1.81	○ Lv Fisherman's Paradise	Lv
	2.01	○ Ar Bellaire	Lv 5.20
	2.12	○ Lv Central Lake	Lv 5.06
	2.23	○ Lv Ellsworth	Lv 4.54
	2.09	○ Lv Belvedere	Lv
	2.47	○ Lv Charlevoix	Lv 4.35
	f 3.02	○ Lv Bayshore	Lv f 4.15
	3.20	○ Ar Potoskey	Lv 4.00
	PM	○ Ar Bay View	Lv
			PM

EQUIPMENT

Trains Nos. 101 and 106
Between Potoskey, Traverse City, Grand Rapids and Chicago—
Sleeping Car
Coaches—
Grand Rapids and Potoskey.

REFERENCE MARKS

*—Daily. f—Stops on flag to pick up passengers or on request to let off passengers.
†—Daily, except Sunday. CT—Central Time. ET—Eastern Time.
○—Connection. *Italic Type*—indicates connecting service.

TIME from 12.01 midnight to 12.00 noon is shown by LIGHT faced figures, and time from 12.01 noon to 12.00 midnight by HEAVY faced figures.
Automatic Block Signals and Automatic Train Control For Your Safety

**DETROIT • TOLEDO • COLUMBUS
VIRGINIA HOT SPRINGS
RICHMOND • NORFOLK**

Via Pere Marquette Ry.—Chesapeake & Ohio Lines

SOUTHBOUND—READ DOWN

NORTHBOUND—READ UP

TABLE 7

The Sportsman No. 46 Daily				The Sportsman No. 47 Daily
		[Eastern Time]		
PM				AM
5.40	Lv Detroit, Mich.		P.M. Ry. Ar	8.00
6.40	Lv Monroe		" Lv	6.44
7.20	Ar Toledo, Ohio		" Lv	6.05
7.35	Lv Toledo		C. & O. Ar	D 5.50
5.50	Lv Cleveland		Big Four Ar	6.40
8.21	Lv Fostoria		C. & O. Ar	5.02
9.23	Lv Marion		" Ar	3.57
10.50	Lv Columbus, Ohio		" Lv	2.52
1.15	Ar Ashland, Ky.		" Lv	11.59
2.05	Ar Huntington, W. Va.		" Lv	11.25
3.17	Ar Charleston		" Lv	10.14
5.37	Ar Hinton		" Lv	7.50
7.00	Ar White Sulphur Springs, W. Va.		" Lv	6.33
...A...	Ar Virginia Hot Springs, Va.		C. & O Lv	...B...
10.35	Ar Charlottesville		C. & O. Lv	2.35
1.20	Ar Richmond		" Lv	11.35
3.45	Ar Newport News		" Lv	9.23
4.45	Ar Phoebus, Fort Monroe		" Lv	8.45
4.55	Ar Norfolk, Va.		" Lv	8.20
PM				AM

EQUIPMENT

All regularly assigned equipment is air conditioned.

THE SPORTSMAN—TRAINS 46 and 47—Daily.

Between Detroit and Phoebus, Va.—Sleeping Car, 12 Sec., DR, and dining car service.

Between Detroit and Phoebus, Va.—Individual reclining seat coach.

Between Cleveland and Charlottesville—Sleeping Car, 6 Sec., 1 DR, 2 Compt., 2DBR.

Between Toledo and Columbus, Huntington, Charleston and Hinton—Sleeping Car, 8 Section, Drawing room, Lounge.

WALKERVILLE • CHATHAM

TABLE 8

Mls	EASTBOUND	18-19 Mixed Ex. Sun.	WESTBOUND	16-17 Mixed Ex. Sun.
		PM		AM
	[Eastern Time]		[Eastern Time]	
0	Lv Walkerville-East Windsor	2.45	Lv Chatham	7.00
3	Lv Walkerville Jct.	3.07	Lv Fargo	7.13
6	Lv Pelton	3.07	Ar Blenheim	7.25
8	Lv Oldcastle	3.12	Lv Blenheim	8.00
11	Lv Paquette	3.18	Lv Merlin	8.30
21	Lv Harrow	3.45	Lv Glenwood	9.00
26	Lv Arner	3.52	Lv Coatsworth	9.15
30	Lv Kingsville	4.10	Lv Wheatley	9.30
34	Lv Ruthven	4.58	Lv Leamington	9.45
38	Lv Leamington	5.15	Lv Ruthven	11.05
46	Lv Wheatley	6.05	Lv Kingsville	11.20
53	Lv Coatsworth	6.17	Lv Arner	11.27
58	Lv Glenwood	6.23	Lv Harrow	11.43
61	Lv Merlin	6.46	Lv Paquette	12.45
75	Ar Blenheim	7.45	Lv Oldcastle	12.50
75	Lv Blenheim	8.15	Lv Pelton	12.55
79	Lv Fargo	8.27	Lv Walkerville Jct.	
86	Ar Chatham	8.40	Ar Walkerville-East Windsor	1.20 PM

REFERENCE MARKS

†—Daily except Sunday.

A—On request to C & O conductor passengers holding tickets from Thurmond and west, reading to Virginia Hot Springs will be furnished with ticket covering limousine service from Covington at no extra charge.

B—On request at Virginia Hot Springs, passengers holding tickets to Thurmond or west, will be furnished ticket covering limousine service to Covington at no extra charge.

C—Toledo-Columbus-Huntington-Charleston-Hinton sleeper may be occupied at Huntington until 6.55 am.; is then carried on No. 14, arriving Charleston 8.30 am.; Hinton 1.05 pm.

D—Hinton-Charleston-Toledo sleeper may be occupied until 8.00 am.

†—Stops on flag to pick up passengers or on request to let off passengers.

Sec.—Section; Compt.—Compartment; DR—Drawing room; DBR—Double bedroom.

Italic Type—all time shown in *Italic Type* indicates connecting service.

ET—Eastern Time. CT—Central Time.

**ANOTHER
PERE MARQUETTE INNOVATION
FOR YOUR DINING PLEASURE**



*Girls Making
Railroad History*

MANY travellers tell us the dining hour on Pere Marquette is a greater pleasure than ever, now that pleasant waitresses are "working on the railroad."

Another brand new feature of our famed dining service is elimination of all gratuities. Your meal check is all you pay. Tipping is unnecessary.

PERE MARQUETTE RAILWAY

Short Route

FOR MOTORISTS BETWEEN MICHIGAN AND THE NORTHWEST



If you are driving between points in Michigan and Wisconsin, Minnesota, and the Northwest, here is the ideal way to go. Pere Marquette's fast auto ferry service across Lake Michigan eliminates the long detour around the base of the lake and the tiresome time-consuming travel through congested city traffic. This economical time saving "bridge" will give you an opportunity to rest and, best of all, you enjoy a delightful and refreshing lake cruise.

The all steel steamers of the Pere Marquette fleet are the largest and the finest of their type on the Great Lakes. They afford ample facilities for automobiles and trucks. Passengers taking this pleasant water route enjoy comfortable lounge, deck and stateroom accommodations. Excellent food is served . . . and it's economical too.

The auto ferries sail daily between Ludington, Michigan and the Wisconsin ports of Milwaukee, Manitowoc and Kewaunee. To insure passage for automobiles, reservations must be made in advance and confirmed. Complete schedules and fares may be found on page 11 of this folder.

PERE MARQUETTE RAILWAY

Auto Ferries

THE RAILROAD THAT CROSSES LAKE MICHIGAN

PERE MARQUETTE AUTO FERRIES

The Direct Way Across Lake Michigan

TABLE 9

The steel steamers in the Pere Marquette Railway fleet are largest and finest of their type on the Great Lakes, each providing ample storage facilities for automobiles. Luxurious accommodations and excellent cuisine are offered passengers, who can save nearly a day's drive by taking this pleasant water route between Michigan and the Northwest.

PASSENGER SAILINGS BETWEEN LUDINGTON AND MANITOWOC

Westbound	Daily	Daily
Lv Ludington (Eastern Time)	7.00 AM	5.30 PM
Ar Manitowoc (Central Time)	10.00 AM	8.30 PM
Eastbound	Daily	Daily
Lv Manitowoc (Central Time)	11.30 AM	10.00 PM
Ar Ludington (Eastern Time)	4.30 PM	3.00 AM

BETWEEN LUDINGTON AND MILWAUKEE

Westbound	Daily	Daily	Daily	Daily
Lv Ludington (ET)	4.15 AM	8.30 AM	1.00 PM	8.45 PM
Ar Milwaukee (Maple St.) (CT)	9.45 AM		6.30 PM	
Ar Milwaukee (Jones Island) (CT)		2.30 PM		2.00 AM
Eastbound	Daily	Daily	Daily	Daily
Lv Milwaukee (Maple St.) (CT)	4.30 AM	B	B	8.00 PM
Lv Milwaukee (Jones Island) (CT)	A	12.00 noon	7.00 PM	A
Ar Ludington (ET)	12.00 noon	7.15 PM	3.00 AM	3.15 AM

BETWEEN LUDINGTON AND KEWAUNEE

Westbound	Daily	Daily Except Sunday
Lv Ludington (Eastern Time)	5.00 AM	4.30 PM
Ar Kewaunee (Central Time)	8.30 AM	8.00 PM
Eastbound	Daily	Daily Except Sunday
Lv Kewaunee (Central Time)	9.30 AM	9.30 PM
Ar Ludington (Eastern Time)	3.00 PM	3.00 AM

PASSENGER FARES AND AUTO RATES

TAX EXTRA

BETWEEN ALL PORTS—EITHER DIRECTION (In effect every day)

PASSENGERS	
One Way	\$3.00 (Meals and Berth Extra)
Round Trip (Return Limit 90 Days)	5.25 (Meals and Berth Extra)

Children under five years of age, free when accompanied by parent or guardian; five years of age and under twelve, one-half fare; twelve years of age or over, full fare.

STATEROOM RATES

Staterooms available thirty minutes after boats dock. Stateroom \$3.00
Parlor rooms with bath, at small extra charge.

AUTOMOBILE RATES (When accompanied by Passenger)

One Way, any make or size	\$5.01 (Passengers Extra)
Round Trip, any make or size	8.35 (Passengers Extra)

(Return Limit 90 Days)

Automobiles with pick-up bodies on regular chassis, some rates as automobiles.

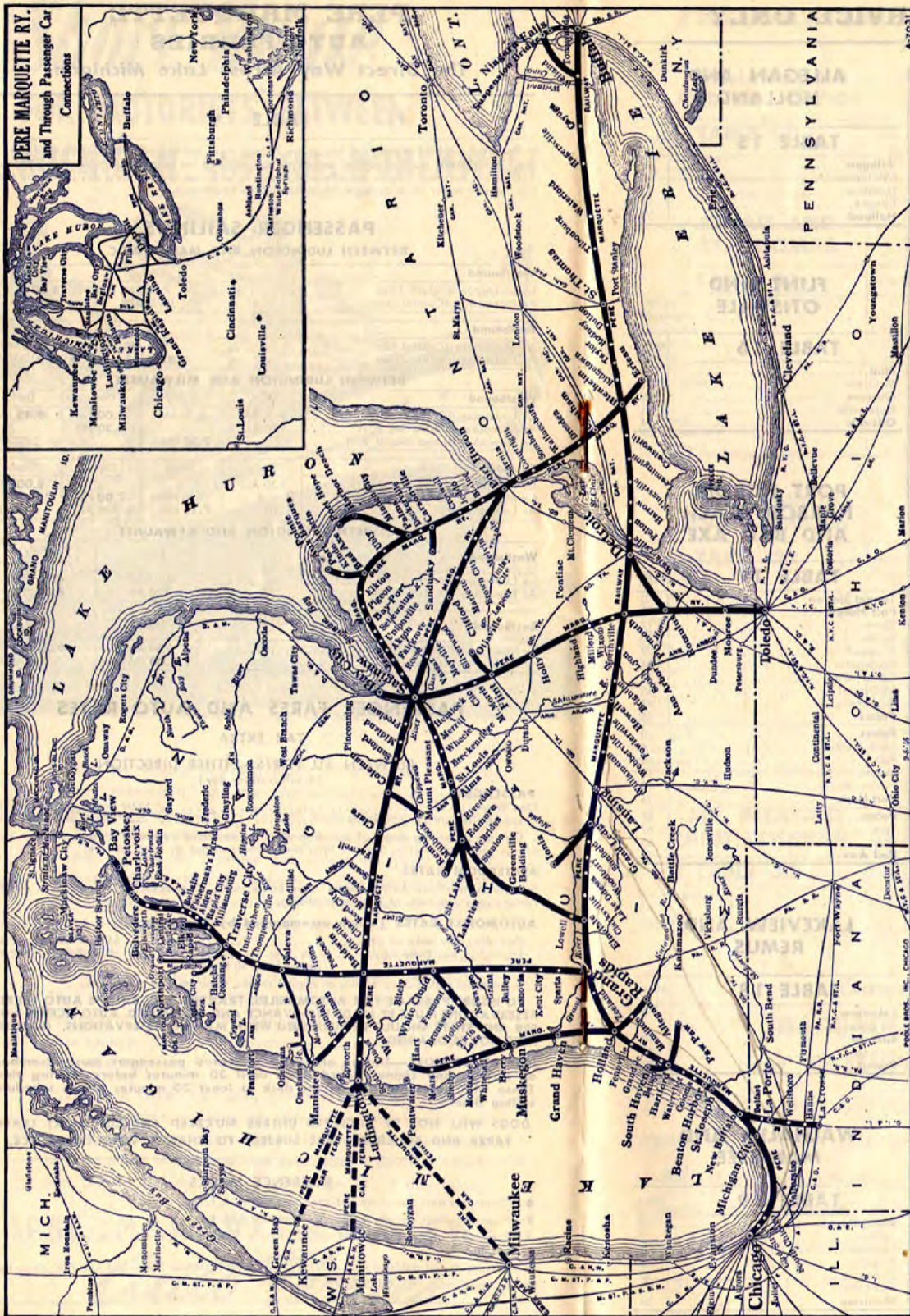
TO INSURE PASSAGE FOR AUTOMOBILES, TRAILERS, ETC., ON THE AUTO FERRIES, RESERVATIONS MUST BE MADE IN ADVANCE AND CONFIRMED. AUTO LICENSE NUMBER AND STATE SHOULD BE FURNISHED WHEN MAKING RESERVATIONS. GASOLINE NEED NOT BE DRAINED.

IMPORTANT NOTE—Unless otherwise indicated passengers must disembark on arrival, and cannot board boats until 30 minutes before leaving time. These with autos must be at the dock at least 30 minutes before scheduled sailing time.

DOGS WILL NOT BE ACCEPTED UNLESS MUZZLED AND ON SHORT LEASH. FARES AND SCHEDULES ARE SUBJECT TO CHANGE WITHOUT NOTICE.

REFERENCE MARKS

- ◆—Passengers must disembark not later than 6.30 A.M. E.T.
- ※—Passengers must disembark not later than 4.30 A.M. E.T.
- A—Passengers and autos loaded only at Maple Street for the 4.30 A.M. and 8.00 P.M. departures.
- B—Passengers and autos loaded only at Jones Island for 12.00 Noon and 7.00 P.M. departures.
- ET—Eastern Time. CT—Central Time.



Map of The Pere Marquette Railway and connections

MILEAGE: Pere Marquette Railway Co.—1,948.76 miles; Lake Michigan Car Ferries 225.00 miles

FREIGHT SERVICE ONLY

FREIGHT SERVICE ONLY (cont'd)

GRAND RAPIDS, SAGINAW, AND BAY CITY

ALLEGAN AND HOLLAND

TABLE 10		Miles
Grand Rapids	0	
Alto	18	
Lowell	28	
Maseley	35	
Belding	44	
Greenville	51	
Sidney	60	
Stanton	64	
Edmore	73	
Vestaburg	79	
Riverdale	83	
Elwell	88	
Ama	92	
St. Louis	96	
Breckenridge	103	
Wheeler	105	
Merrill	110	
Hemlock	115	
Paines	125	
Saginaw (Potter St.)	132	
South Bay City	142	
Bay City	145	

TABLE 15		Miles
Allegan	0	
Mill Grove	4	
Hamilton	13	
Fillmore	17	
Holland	23	

FLINT AND OTISVILLE

TABLE 16		Miles
Flint	0	
McGrew	5	
Genesee	8	
Rogersville	11	
Otisville	14	

PORT HURON, HARBOR BEACH AND BAD AXE

TABLE 11		Miles
Grand Ledge	0	
Eagle	4	
Portland	12	
Lyons	21	
Ionia	26	

TABLE 17		Miles
Tunnel Station	0	
Port Huron	2	
Blaine	17	
Jeddo	20	
Croswell	29	
Applegate	34	
Carsonville	40	
McGregor	45	
Deckerville	48	
Palms	54	
Minden City	4	
Ruth	3	
Helena	12	
Harbor Beach	18	
Port Hope	26	
Palms	54	
Tyre	62	
Ubyly	65	
Bad Axe	72	

MUSKEGON AND HART

TABLE 12		Miles
Muskegon	0	
Berry	5	
Lakewood	10	
Whitehall-Montague	14	
Rothbury	22	
New Era	25	
Shelby	29	
Mears	35	
Hart	39	

LA CROSSE AND NEW BUFFALO

TABLE 13		Miles
La Crosse	0	
Thomaston	6	
Hanna	9	
Wellsboro	15	
Magee	17	
La Porte	23	
Belfast	27	
New Buffalo	37	

MUSKEGON AND WHITE CLOUD

TABLE 14		Miles
Muskegon	0	
Berry	5	
Twin Lake	11	
Holton	17	
Brunswick	20	
Reeman	22	
Fremont	25	
Wooster	30	
White Cloud	36	

LAKEVIEW AND REMUS

TABLE 18		Miles
Lakeview	0	
Six Lakes	6	
Edmore	12	
Blanchard	21	
Remus	27	

WALHALLA AND MANISTEE

TABLE 19		Miles
Walhalla	0	
Talman	2	
Fountain	3	
Freesoil	12	
Stronach	20	
East Lake	23	
Manistee	28	

WILLIAMSBURG AND ELK RAPIDS

TABLE 20		Miles
Williamsburg	0	
Elk Rapids	14	

ERIEAU AND ST. THOMAS

TABLE 21		Miles
Erieau	0	
Blenheim	8	
Ridgetown	17	
Highgate	23	
Muirkirk	25	
Rodney	31	
West Lorne	35	
Dutton	42	
Iona	52	
Shedden	56	
Middlemarch	56	
St. Thomas	61	

PORT HURON AND SAGINAW

TABLE 22		Miles
Port Huron	0	
Tappan	4	
Avoca	17	
Yale	24	
Melvin	29	
Brown City	36	
Marlette	45	
Clifford	50	
Silverwood	53	
Mayville	59	
Juniata	65	
Vassar	71	
Tuscola	75	
Gera	79	
Saginaw	90	

MT. PLEASANT AND COLEMAN

TABLE 23		Miles
Mt. Pleasant	0	
Delwin	8	
Coleman	15	

BAD AXE AND PORT AUSTIN

TABLE 24		Miles
Bad Axe	0	
Filon	7	
Kinde	10	
Port Austin	17	

PAW PAW, HARTFORD AND SOUTH HAVEN

TABLE 25		Miles
Paw Paw	0	
Lawrence	9	
Hartford	15	
Covert	23	
Cableton	30	
South Haven	31	

CHATHAM AND SARNIA

TABLE 26		Miles
Chatham	0	
Darrell	5	
Eberts	7	
Ennett	10	
Dresden	12	
Tupperville	17	
Wallaceburg	23	
Port Lambton	31	
Sombra	35	
Courtright	43	
Corunna	48	
Sarnia	53	

SAGINAW AND BAD AXE

TABLE 27		Miles
Bay City	0	
Saginaw	12	
Reese	25	
Fair Grove	34	
Akron	37	
Unionville	43	
Sebewaing	49	
Bay Port	58	
Pigeon	65	
Elkton	70	
Bad Axe	80	

Convenient BAGGAGE PICK-UP and DELIVERY SERVICE

Personal Baggage will be picked up at hotel, office or residence at many principal points and delivered to hotel, office or residence at destination. Arrangements, for a nominal charge, may be made at the time you purchase your ticket. Ask your ticket agent or passenger representative about this service.

INFORMATION ON FARES

ONE-WAY RAILROAD FARES • SLEEPING CAR AND PARLOR CAR FARES

Federal Tax not included

All Parlor Cars are owned and operated by Pere Marquette Ry. These fares are published as information only and are subject to change without notice

ONE-WAY BETWEEN	RAILROAD FARES		PULLMAN FARES		
	In Coaches	In Pullmans	Lower Berth	Upper Berth	Seat
Chicago, Illinois and					
Bay View.....	\$ 8.31	\$12.49	\$3.50	\$2.65	\$1.50
Bellaire.....	8.09	12.10	3.20	2.45	1.45
Benton Harbor.....	2.20	3.25			.65
Charlevoix.....	8.31	12.43	3.50	2.65	1.50
Detroit.....	6.27	9.41			1.20
Grand Haven.....	3.96	5.94	2.35	1.80	.90
Grand Rapids.....	4.07	6.11	2.35	1.80	.90
Holland.....	3.52	5.28	2.35	1.80	.80
Muskegon.....	4.24	6.38	2.35	1.80	.90
Petoskey.....	8.31	12.43	3.50	2.65	1.50
St. Joseph.....	2.15	3.19			.65
Thompsonville.....	6.77	10.12	2.95	2.20	1.20
Traverse City.....	7.26	10.89	2.95	2.20	1.20
Grand Rapids, Michigan and					
Bay View.....	4.24	6.38	2.35	1.80	.90
Bellaire.....	4.02	6.00	2.35	1.80	.90
Charlevoix.....	4.24	6.33	2.35	1.80	.90
Petoskey.....	4.24	6.33	2.35	1.80	.90
Traverse City.....	3.19	4.79	2.35	1.80	.65
Toledo, Ohio and					
Bay View.....	7.92	11.83	2.95	2.20	
Bellaire.....	7.92	11.83	2.95	2.20	
Charlevoix.....	7.92	11.83	2.95	2.20	
Petoskey.....	7.92	11.83	2.95	2.20	
Traverse City.....	7.32	10.89	2.95	2.20	
Detroit, Michigan and					
Baltimore.....	13.09	19.53	4.95	3.75	
Bay City.....	2.64	3.96			
Bay View.....	7.10	10.56	2.95	2.20	
Bellaire.....	6.88	10.23	2.95	2.20	
Charleston.....	8.14	12.05	3.50	2.65	
Charlevoix.....	7.04	10.56	2.95	2.20	
Charlottesville.....	13.09	19.53	5.80	4.40	
Cincinnati.....	5.56	8.36	2.95	2.20	
Columbus.....	4.02	5.94	2.95	2.20	.80
Flint.....	1.65	2.48			
Grand Haven.....	4.02	6.05			
Grand Rapids.....	3.36	5.06			.90
Holland.....	3.91	5.89			1.05
Hot Springs.....	12.33	18.32	4.95	3.75	
Huntington.....	7.04	10.51	2.95	2.20	
Lansing.....	1.98	2.92			.65
Muskegon.....	4.18	6.33			
Newport News.....	14.96	22.28	6.95	5.30	
Petoskey.....	7.04	10.56	2.95	2.20	
Philadelphia.....	14.25	21.23	4.95	3.75	
Pittsburgh.....	6.55	9.74	2.95	2.20	1.50
Richmond.....	14.80	22.06	5.80	4.40	
Saginaw.....	2.37	3.52			
Stanton.....	13.09	19.53	5.25	4.00	
Traverse City.....	6.05	9.02	2.95	2.20	
Washington.....	13.09	19.53	4.95	3.75	
White Sulphur Springs.....	11.28	16.72	4.65	3.55	

NOW — Additional Sunday Service between Detroit and Grand Rapids

Additional Sunday Streamliner Service is now in operation between Detroit, Lansing and Grand Rapids. Westbound streamliner leaves Detroit 8:55 PM, arriving Grand Rapids 11:45 PM; eastbound streamliner leaves Grand Rapids 9:00 PM, arriving Detroit 11:50 PM. Earlier Sunday streamliners leave Detroit at 8:15 AM and 5:15 PM, and from Grand Rapids 7:50 AM and 5:25 PM. See table 3 on page 4 for complete schedules.

INFORMATION ON FARES

(continued)

TABLE OF FARES FOR VARIOUS STANDARD PULLMAN ACCOMMODATIONS BASED ON CHARGE FOR LOWER BERTH

These are one way fares. Table applies only between points where through Pullman fares are published—not to combination Pullman fares.

Where Lower Berth Rate is	Roomette for one Person is	Bed Room for one Person is	Bed Room for two Persons is	Bed Room Suite for two or more Persons is	Compartment for one Person is	Compartment for two Persons is	Drawing Room for one Person is	Drawing Room for two Persons is
\$2.35	\$3.50	\$4.20	\$4.65	\$8.10	\$4.65	\$6.95	\$5.80	\$8.10
2.65	3.80	4.75	5.25	9.25	5.25	7.55	6.70	9.25
2.95	4.10	5.25	5.80	10.40	5.80	8.10	7.30	10.40
3.20	4.50	5.75	6.40	11.55	6.40	9.25	8.10	11.55
3.50	4.90	6.30	6.95	12.75	6.95	9.85	8.70	12.75
4.10	5.70	7.35	8.10	15.05	8.10	11.55	10.15	15.05
4.35	6.15	7.85	8.70	16.20	8.70	12.20	11.00	16.20
4.65	6.50	8.40	9.25	16.20	9.25	13.35	11.55	16.20
4.95	6.90	8.90	9.85	17.35	9.85	13.90	12.45	17.35
5.25	7.35	9.45	10.40	18.50	10.40	15.05	13.05	18.50
5.50	7.70	9.90	11.00	19.65	11.00	15.65	13.90	19.65
5.80	8.10	10.40	11.55	20.80	11.55	16.20	14.50	20.80
6.15	8.55	10.95	12.20	21.95	12.20	17.35	15.35	21.95
6.40	8.95	11.45	12.75	23.10	12.75	17.95	15.90	23.10
6.70	9.35	12.00	13.35	24.30	13.35	19.10	16.80	24.30
6.95	9.75	12.50	13.90	24.30	13.90	19.65	17.35	24.30

*Rate is slightly less if suite is occupied by only two persons.

RAILROAD TICKETS REQUIRED IN SLEEPING AND PARLOR CARS

▲ The minimum number of adult railroad tickets required for exclusive occupancy of space in Pullman cars is as follows.

	Minimum Number of Adult Railroad Tickets Required
Sleeping Cars	
Berth.....	1
Bedroom.....	1
Compartment—Berth Service.....	1-1/10
Compartment—Seat Service.....	1-1/2
Drawingroom—Berth Service.....	1-1/4
Drawingroom—Seat Service.....	2
Drawingroom in Parlor Car.....	2

▲ Two half-fare children's tickets are considered as one adult ticket. For exclusive use of berth or seat in sleeping car by child 5 and under 12 years of age, one (1) child's half-fare passage ticket only will be required.

RESERVATIONS FOR SLEEPING CAR, PARLOR CAR AND AUTO FERRIES

BAY CITY, MICH.

Phone 2-5956.

CHICAGO, ILL.

Reservation and Information Bureau, Phone Harrison 2855.
Grand Central Station, Phones Harrison 2393 and Webast 2211.
Sixty-third St. (B. & O. Station), Phone Prospect 0995.

DETROIT, MICH.

City Ticket Office, 228 Michigan Ave., Phone Cadillac 0900.
General Motors Building, Phone Madison 9266.
Fort St. Union Depot, Phone Randolph 3885.

FLINT, MICH.

Phone 2-0632.

GRAND RAPIDS, MICH.

City Ticket Office, 45 Ionia Ave., N. W., Phone 9-0111.
Union Station, Phone 93414.

LANSING, MICH.

City Ticket Office, Olds Hotel, Phone 4-6465.
Union Station, Phone 4-7431.

LUDINGTON, MICH.

Dock, Phone 114.

MANITOWOC, WIS.

Phone 3325.

MILWAUKEE, WIS.

Phone Marquette 3258; Nights, Sundays and Holidays, Phone Orchard 3460.

MUSKEGON, MICH.

Phone 22224.

SAGINAW, MICH.

Potter St. Station, Phone 6171; Sundays and Holidays, Phone 3-1032.

SOUTH CHICAGO, ILL.

Phone So. Chicago 7755.

TOLEDO, OHIO

City Ticket Office, Richardson Bldg., 221 St. Clair St., Phone Adams 3510.
Union Station, Phone Garfield 7421.

INDEX TO STATIONS

All tables in this folder are numbered and appear in numerical order beginning on page 2. To find train service to and from stations you are interested in, locate name in the alphabetical list shown below or on page 19. At the right of station name appears the number or numbers of the tables (not pages) in this folder where you will find the service thereto. You will find it helpful to refer to "Suggestions for Use of This Folder" on page 1 and "General Information" on page 22.

☐ Indicates stations with freight service only.

Table	Table	Table
☐ Akron, Mich. 27	☐ Eagle, Mich. 11	Kaleva, Mich. 5, 6
Alden, Mich. 6	☐ East Lake, Mich. 19	Kent City, Mich. 6
☐ Allegan, Mich. 15	East Saugatuck, Mich. 1, 2	Kewaunee, Wis. 9
Alma, Mich. 10	East Windsor, Ont. 8	☐ Kinde, Mich. 24
Alto, Mich. 3, 10	Edberts, Ont. 26	Kingsville, Ont. 8
Applegate, Mich. 17	Edmore, Mich. 10, 18	
Arner, Ont. 8	☐ Elk Rapids, Mich. 20	
Ashtand, Ky. 7	☐ Elkon, Mich. 27	
☐ Avoca, Mich. 22	Elsworth, Mich. 6	☐ La Crosse, Ind. 13
	Elwell, Mich. 10	Lake, Mich. 5
☐ Bad Axe, Mich. 17, 24, 27	Ennett, Ont. 26	Lake Odessa, Mich. 3
Bailey, Mich. 6	☐ Erieau, Ont. 21	Lakeside, Mich. 1, 2
Baldwin, Mich. 5, 6	Evart, Mich. 5	Lakeview, Mich. 18
Bangor, Mich. 1, 2		Lakewood, Mich. 12
Bay City, Mich. 4, 5, 10, 27		Lansing, Mich. 3
Bay Port, Mich. 27	☐ Fair Grove, Mich. 27	La Porte, Ind. 13
Bayshore, Mich. 6	Fargo, Ont. 8	Lawrence, Mich. 25
Bay View, Mich. 1, 2, 5, 6	Farwell, Mich. 5	Leamington, Ont. 8
☐ Belding, Mich. 10	Fennville, Mich. 1, 2	Lowell, Mich. 10
Belfast, Ind. 13	☐ Filion, Mich. 24	Ludington, Mich. 5, 6, 9
Bellaire, Mich. 6	☐ Fillmore, Mich. 15	Ludington Dock, Mich. 5
Belvedere, Mich. 6	☐ Fisherman's Paradise, Mich. 4, 16	Lyons, Mich. 11
Bendon, Mich. 6	Flint, Mich. 7	
Benton Harbor, Mich. 1, 2	Fostoria, Ohio 7	☐ McDonald, Mich. 1, 2
☐ Berry, Mich. 12, 14	☐ Fountain, Mich. 19	☐ McGregor, Mich. 17
Beulah, Mich. 6	Fowlerville, Mich. 3	☐ McGrew, Mich. 16
Birch Run, Mich. 4	Frankfort, Mich. 6	☐ Magee, Ind. 13
Bitely, Mich. 6	☐ Freeland, Mich. 5	Manistee, Mich. 5, 6, 19
☐ Blaine, Mich. 17	☐ Friesland, Mich. 19	Manitowoc, Wis. 9
Blanchard, Mich. 18	☐ Fremont, Mich. 14	Marion, Ohio 7
Blanchheim, Ont. 8, 21		Marquette, Mich. 22
Branch, Mich. 5		Mayville, Mich. 22
Bravo, Mich. 1, 2	☐ Genesee, Mich. 16	☐ Mears, Mich. 12
☐ Breckenridge, Mich. 10	☐ Gera, Mich. 22	☐ Melvin, Mich. 22
Breedsville, Mich. 1, 2	☐ Gilford, Mich. 27	Merlin, Mich. 8
Brethren, Mich. 6	Glenwood, Ont. 8	Michigan City, Ind. 1, 2
Bridgman, Mich. 1, 2	Grand Blanc, Mich. 4	☐ Middletown, Mich. 21
Brighton, Mich. 3	Grand Haven, Mich. 1, 2	Midland, Mich. 5
Broham, Mich. 6	Grand Junction, Mich. 1, 2	Millford, Mich. 4
☐ Brown City, Mich. 22	Grand Ledge, Mich. 3, 11	☐ Mill Grove, Mich. 7
☐ Brunswick, Mich. 14	Grand Rapids, Mich. 1, 2, 3, 6, 10	Milwaukee, Wis. 19
	Grandville, Mich. 1, 2	☐ Minden City, Mich. 7
	Grant, Mich. 6	Monroe, Mich. 3, 4, 7
☐ Cabarton, Mich. 25	☐ Grawn, Mich. 6	Montague, Mich. 12
☐ Cassonville, Mich. 17	☐ Greenville, Mich. 10	☐ Moseley, Mich. 10
Casnovia, Mich. 6		Mt. Morris, Mich. 4
Central Lake, Mich. 6	☐ Hamilton, Mich. 15	☐ Mt. Pleasant, Mich. 23
Charleston, W. Va. 7	☐ Hanna, Ind. 13	☐ Muirkirk, Ont. 21
Charlevoix, Mich. 1, 2, 6	Harbor Beach, Mich. 17	☐ Mulliken, Mich. 3
Charlottesville, Va. 7	Harrow, Ont. 8	Muskegon, Mich. 1, 2, 3, 12, 14
Chase, Mich. 5	Hart, Mich. 12	Muskegon Heights, Mich. 1, 2
Chatham, Ont. 8, 26	Hartford, Mich. 1, 2, 25	
Chicago, Ill. 1, 2, 6	☐ Helena, Mich. 17	
Clara, Mich. 5	☐ Hemlock, Mich. 10	
☐ Clarksville, Mich. 3	Hersey, Mich. 5	Newaygo, Mich. 6
Cleveland, Ohio 7	High Bridge, Mich. 6	New Buffalo, Mich. 1, 2, 13
☐ Clifford, Mich. 22	Highgate, Ont. 21	☐ New Era, Mich. 12
Clio, Mich. 4	Highland, Mich. 4	Newport News, Va. 7
Clyde, Mich. 4	Hinton, W. Va. 7	New Richmond, Mich. 1, 2
Coatsworth, Ont. 8	Holland, Mich. 1, 2, 15	Nirvana, Mich. 5
Coleman, Mich. 5, 23	Holly, Mich. 4	Norfolk, Va. 7
Coloma, Mich. 1, 2	☐ Holton, Mich. 14	North Bradley, Mich. 5
Columbus, Ohio 7	Howell, Mich. 3	Northport, Mich. 6
Comstock Park, Mich. 6	Hudsonville, Mich. 1, 2	Northville, Mich. 4
☐ Corunna, Ont. 26	Huntington, W. Va. 7	Novi, Mich. 4
☐ Courtright, Ont. 26		
☐ Covert, Mich. 25	Idlewild, Mich. 5	☐ Oldcastle, Ont. 8
☐ Crosswell, Mich. 17	Interlochen, Mich. 6	☐ Omens, Mich. 6
Custer, Mich. 5	☐ Onia, Ont. 21	☐ Otisville, Mich. 16
	☐ Onia, Mich. 11	
☐ Darrell, Ont. 26	Irons, Mich. 6	☐ Paines, Mich. 10
☐ Deckerville, Mich. 17		☐ Palms, Mich. 17
☐ Delwin, Mich. 23	☐ Jeddo, Mich. 17	Paquette, Ont. 8
Detroit, Mich. 3, 4, 5, 6, 7	☐ Juniata, Mich. 22	☐ Paw Paw, Mich. 25
☐ Dresden, Ont. 26		
☐ Dutton, Ont. 21		

INDEX TO STATIONS (cont'd)

Table	Table	Table
Peacock, Mich. 6	Sawyer, Mich. 1, 2	☐ Vassar, Mich. 22
☐ Pelton, Ont. 8	☐ Scottville, Mich. 5	☐ Vestaburg, Mich. 10
☐ Petoskey, Mich. 1, 2, 5, 6	Sears, Mich. 5	Virginia Hot Springs, Va. 7
☐ Phoebus, Va. 7	☐ Sebawaing, Mich. 27	
☐ Pigeon, Mich. 27	☐ Shedden, Ont. 21	☐ Walhalla, Mich. 5, 19
☐ Plymouth, Mich. 3, 4	☐ Shelby, Mich. 12	Walkerville, Ont. 8
☐ Port Austin, Mich. 24	☐ Sidney, Mich. 10	Walkerville Jct., Ont. 8
☐ Port Hope, Mich. 17	☐ Silverwood, Mich. 22	Wallaceburg, Ont. 26
☐ Port Huron, Mich. 17, 22	☐ Six Lakes, Mich. 18	Waterloo, Mich. 1, 2
☐ Port Lambton, Ont. 26	☐ Sixty-third St., Chicago, Ill. 1, 2	☐ Webberville, Mich. 2
☐ Portland, Mich. 11	☐ Sombra, Ont. 26	☐ Wellsboro, Ind. 13
☐ Pullman, Mich. 1, 2	☐ South Bay City, Mich. 4, 10	Wellston, Mich. 6
	☐ South Chicago, Ill. 1, 2	☐ West Lorne, Ont. 21
	☐ South Haven, Mich. 25	☐ West Olive, Mich. 1, 2
	☐ South Lyon, Mich. 2	☐ Wheatley, Ont. 8
	☐ Sparta, Mich. 6	☐ Wheeler, Mich. 10
☐ Rapid City, Mich. 6	☐ Stanton, Mich. 10	☐ White Cloud, Mich. 6, 14
☐ Reed City, Mich. 5	☐ Shelby, Mich. 1, 2	☐ Whitehall, Mich. 12
☐ Reeman, Mich. 14	☐ Stevensville, Mich. 1, 2	☐ White Sulphur Springs, W. Va. 6, 20
☐ Reese, Mich. 27	☐ Stronach, Mich. 17	Williamsburg, Mich. 3
☐ Remus, Mich. 18	☐ Sunfish, Mich. 2	Williamston, Mich. 3
☐ Richmond, Va. 7	☐ Sutton's Bay, Mich. 6	Wilcox, Mich. 4
☐ Ridgetown, Ont. 21		☐ Woodbury, Mich. 2
☐ Riverdale, Mich. 10		☐ Wooster, Mich. 14
☐ Riverside, Mich. 1, 2		
☐ Rodney, Ont. 21	☐ Tallman, Mich. 19	
☐ Rogersville, Mich. 16	☐ Tappan, Mich. 22	☐ Yale, Mich. 22
☐ Rose Center, Mich. 4	☐ Thomaston, Ind. 13	
☐ Rothbury, Mich. 12	☐ Thompsonville, Mich. 6	
☐ Ruth, Mich. 17	☐ Toledo, Ohio 3, 4, 6, 7	
Ruthven, Ont. 8	☐ Traverse City, Mich. 1, 2, 6	
	☐ Tunnel Station, Mich. 17	
	☐ Tuserville, Ont. 26	
☐ Saginaw, Mich. 4, 5, 10, 22, 27	☐ Tuscola, Mich. 22	☐ Zeeland, Mich. 1, 2
☐ St. Joseph, Mich. 1, 2	☐ Twin Lake, Mich. 14	
☐ St. Louis, Mich. 10	☐ Tyre, Mich. 17	
☐ St. Thomas, Ont. 21		
☐ Salem, Mich. 2		
☐ Sanford, Mich. 5	☐ Ubly, Mich. 17	☐ Indicates stations with freight service only
☐ Sarnia, Ont. 26	☐ Unionville, Mich. 27	

PERE MARQUETTE RAILWAY STATIONS IN PRINCIPAL CITIES

CHICAGO, ILL.	GRAND RAPIDS, MICH.
Grand Central Station, Harrison and Wells Streets.	Union Station.
63rd Street—B & O Station	TOLEDO, OHIO
	Union Station.
DETROIT, MICH.	LANSING, MICH.
Fort Street Union Depot.	Union Station.

SEPTEMBER 1946							OCTOBER 1946						
Sun	Mon	Tue	Wed	Thu	Fri	Sat	Sun	Mon	Tue	Wed	Thu	Fri	Sat
1	2	3	4	5	6	7	6	7	8	9	10	11	12
8	9	10	11	12	13	14	13	14	15	16	17	18	19
15	16	17	18	19	20	21	20	21	22	23	24	25	26
22	23	24	25	26	27	28	27	28	29	30	31		
29	30												

NOVEMBER 1946							DECEMBER 1946						
Sun	Mon	Tue	Wed	Thu	Fri	Sat	Sun	Mon	Tue	Wed	Thu	Fri	Sat
				1	2		1	2	3	4	5	6	7
3	4	5	6	7	8	9	8	9	10	11	12	13	14
10	11	12	13	14	15	16	15	16	17	18	19	20	21
17	18	19	20	21	22	23	22	23	24	25	26	27	28
24	25	26	27	28	29	30	29	30	31				

JANUARY 1947							FEBRUARY 1947						
Sun	Mon	Tue	Wed	Thu	Fri	Sat	Sun	Mon	Tue	Wed	Thu	Fri	Sat
			1	2	3	4							1
5	6	7	8	9	10	11	2	3	4	5	6	7	8
12	13	14	15	16	17	18	9	10	11	12	13	14	15
19	20	21	22	23	24	25	16	17	18	19	20	21	22
26	27	28	29	30	31		23	24	25	26	27	28	

TRAFFIC DEPARTMENT



W. C. HULL, Vice President, Cleveland 1, Ohio
A. S. GENET, Asst. Vice President—Freight Traffic, Cleveland 1, Ohio
J. E. DOYLE, Asst. to Vice President, Cleveland 1, Ohio

PASSENGER

F. A. YOUNG, General Passenger Agent..... Detroit 2, Mich.
L. P. MESSMORE, Assistant General Passenger Agent..... Milwaukee 2, Wis.
H. E. HAY, Assistant General Passenger Agent..... Chicago 4, Ill.
RAY E. IVORY, General Agent Passenger Department..... Detroit 26, Mich.
D. R. RATHSACK, General Agent Passenger Department..... Ludington, Mich.
R. W. OHLMAN, Division Passenger Agent..... Grand Rapids 2, Mich.

PASSENGER REPRESENTATIVES

Chicago 4, Ill.—1601-1610 Utilities Building. Phone Webster 3900—
H. E. HAY, Assistant General Passenger Agent.
H. C. WILSON, Traveling Passenger Agent.
DONALD R. MC KAY, City Passenger Agent.
J. ROBERT WATSON, Passenger Representative.
Consolidated Ticket Offices, 163-165 W. Jackson Blvd.—
C. F. KUNGEL, Ticket Agent. Phone Webster 3900.
Grand Central Station, S. Wells and Harrison Sts.—
G. TOMPKINS, Ticket Agent. Phone Wabash 2211.
63d Street—B. & O. Station. Phone Prospect 0995—A. E. WINEGAR, Ticket Agent.
Chicago, Ill.—Hotel Ticket Offices—H. A. JOHNSON, Ticket Agent.

Cincinnati 2, Ohio—Dixie Terminal Bldg. E. L. DAVIS, Dist. Pass'r Agt. Phone Main 2550.

Cleveland 1, Ohio—1710 Terminal Tower Bldg.—J. J. MULROONEY, Dist. Passenger Agent.
Phone Cherry 8360.

Columbus 15, Ohio—50 E. Broad St. Phone Main 4281—F. A. POWELSON, Div. Pass'r Agt.

Detroit 26, Mich—801 Lafayette Building. Phone Randolph 3220—
RAY E. IVORY, General Agent Passenger Department.
W. A. ZIEL, Traveling Passenger Agent.
H. S. BANNISTER, Passenger Representative.
City Ticket Office, 228 Michigan Avenue—L. E. VAIR, Ticket Agent. Phone Cadillac 0900.
Fort Street Union Depot. Phone Randolph 3885—E. J. CRAIG, Ticket Agent.

Detroit 2, Mich.—Boulevard Ticket Office, Lobby General Motors Bldg.
Grand Boulevard at Cass and Second Aves.—C. B. JONES, Ticket Agt. Phone Madison 9266.

Flint 3, Mich.—Pere Marquette Station. Phone 2-0632—A. R. CHATFIELD, Ticket Agent.

Grand Rapids 2, Mich.—City Ticket Office, 45 Ionia Ave., N.W. Phone 9-0111—
R. W. OHLMAN, Division Passenger Agent.
RALPH B. LEONARD, Passenger Representative.
EMIL C. JESSE, Depot Passenger Agent.
S. S. GABRIEL, Ticket Agent.
Union Station, Phone 93414—L. G. CAREY, Ticket Agent.

Huntington 19, W. Va.—C. & O. Depot. Phone 9141—H. C. GREEN, Div. Pass'r Agent.

Indianapolis 4, Ind.—534 Merchants Bank Bldg. Phone Franklin 3128.
W. A. GRIFFITH, Dist. Passenger Agent.

Lansing 16, Mich.—City Ticket Office, Olds Hotel, Phone 4-6465
W. R. BASSETT, City Ticket Agent.

Lansing 29, Mich.—Union Station. Phone 4-7431—L. G. HAMMOND, Ticket Agent.

Lexington 9, Ky.—Union Station. Phone 157—R. S. STEWART, Division Passenger Agent.

Louisville 2, Ky.—108 Starks Bldg. Phone Wabash 5036—
F. E. OSBORN, General Agent Passenger Department.

Ludington, Mich.—Pere Marquette Dock, Phone 114—
D. R. RATHSACK, General Agent Passenger Department.

Manitowac, Wis.—Pere Marquette Dock, Phone 3325—LLOYD OLSON, Agent.

Milwaukee 2, Wis.—522 Grain and Stock Exchange. Phone Marquette 3258.
L. P. MESSMORE, Assistant General Passenger Agent.
Maple Street Dock, Phone Orchard 3460—J. KIESSEL, Agent.

New York 7, N. Y.—233 Broadway. Phone Worth 2-3400
W. R. RHODES, General Eastern Passenger Agent.

Norfolk 10, Va.—Monticello Hotel. Phone 2-3634—
F. L. AMOS, General Agent Passenger Department.

Philadelphia 2, Pa.—902 Girard Trust Co. Bldg.—
W. P. WALKER, District Passenger Agent. Phone Locust 7-7247.

Pittsburgh 19, Pa.—2210 Koppers Bldg.—H. A. LEECH, General Agt. Phone Atlantic 4750.

Richmond 19, Va.—706 East Grace St. Phone 3-0291—J. R. CAVAN, Dist. Pass'r Agent.

Saginaw 6, Mich.—Potter St. Station. Phone 6171—O. L. BROWN, Ticket Agent.

St. Louis, 3, Mo.—Room 204, Shell Bldg. Chestnut 6582.
J. A. ORCUTT, Western Passenger Agent.

Toledo 4, Ohio—City Ticket Office, Richardson Bldg., 221 N. St. Clair St. Phone Adams 3510
C. J. CURTISS, City Passenger & Ticket Agent.
Union Depot. Phone Garfield 7421—H. C. LORENZ, Ticket Agent.

Washington 5, D. C.—809 15th Street, N.W. Phone National 0821—
C. E. BOWEN, District Passenger Agent.
H. M. HOWARD, City Passenger Agent.
J. J. MILLER, City Passenger Agent.

MAIL AND EXPRESS

D. MAYER, Manager, Mail and Express Traffic..... Detroit 2, Mich.
W. L. ALDRICH, Supervisor, Mail and Express Traffic..... Detroit 2, Mich.

Traffic Department (Cont'd)



FREIGHT

E. T. REYNOLDS, Freight Traffic Manager—Solicitation..... Detroit 2, Mich.
J. C. HARMS, Freight Traffic Manager—Rates..... Detroit 2, Mich.
F. W. GOLDIE, Assistant Freight Traffic Manager—Solicitation..... Detroit 2, Mich.
E. L. THRALL, Assistant Freight Traffic Manager—Rates..... Detroit 2, Mich.
J. E. CLARK, Assistant Freight Traffic Manager—Solicitation..... Chicago 4, Ill.
W. P. LEE, General Freight Agent—Rates..... Detroit 2, Mich.
E. E. SHARPS, General Freight Agent—Solicitation..... Detroit 2, Mich.
LEO. KLIPP, Assistant General Freight Agent—Rates..... Detroit 2, Mich.
B. N. MAIER, Assistant General Freight Agent..... Chicago 4, Ill.

FREIGHT REPRESENTATIVES

Atlanta 3, Ga.—819-20 Healey Bldg.—Walnut 3254—DWIGHT M. SMITH, General Agent.

Baltimore 2, Md.—2303 O'Sullivan Bldg.—E. A. STABLER, General Agent. Phone Plaza 1373.

Birmingham 3, Ala.—1216-17 Waits Bldg. Phone 3-5980.—WARREN T. SMIRL, General Agent.

Boston 10, Mass.—Room 729, 80 Federal Street—
E. P. LANDON, New England Agent. Phone Liberty 2066.

Buffalo 2, N. Y.—809-10 Iroquois Bldg.—
GEO. C. STEIGER, Assistant General Freight Agent.
E. W. AYERS, General Agent. Phone Cleveland 4344-45.

Charlotte 2, N. C.—1012 Commercial Nat'l Bank Bldg.—PORTER WIMBISH, Gen. Agt. Ph. 7640.

Chatham, Ont.—Sheldon Block. Phone 446—F. M. GOODFELLOW, Division Freight Agent.

Chicago 4, Ill.—1601-10 Utilities Bldg. 327 S. LaSalle St.
B. N. MAIER, Assistant General Freight Agent.
L. J. HURCKES, General Agent. Phone Webster 3900.

Cincinnati 2, Ohio—738 Dixie Terminal Building—
CHAS. J. PLOSS, General Agent. Phone Parkway 6810.

Cleveland 1, Ohio—1709 Terminal Tower Building—
DONALD W. CLARK, General Agent. Phone Cherry 8360.

Detroit 26, Mich.—525-7 Lafayette Bldg.—J. PARKER DONOVAN, Division Freight Agent.
R. A. CORNELL, General Agent. Phone Randolph 8206.

Grand Rapids 2, Mich.—801-802 Michigan Bank Building—
J. M. GATELY, Division Freight Agent. Phone 94531.

Green Bay, Wis.—706 Bellin Bldg.—A. G. HAY, General Agent. Phone Howard 25.

Kansas City 6, Mo.—423-424 Railway Exchange Bldg.—
DOLPH LYON, General Agent. Phone Victor 6406.

Knoxville 02, Tenn.—1410-11 Hamilton National Bank Building—
B. A. SMALLING, General Agent. Phone 2-8812.

Lexington 9, Ky.—Room 6, Union Station—B. G. STALL, Div. Freight Agt. Phone 8238.

Los Angeles 14, Cal.—516 Associated Realty Bldg.—D. R. EVANS, Gen. Agt. Ph. Trinity 7356.

Memphis 3, Tenn.—1430 Exchange Bldg.—ED. W. LAMBERT, Gen. Agt. Phone 8-8942.

Milwaukee 2, Wis.—526-532 Grain and Stock Exchange.
C. H. JENS, General Freight Agent.
N. P. WALDOCH, General Agent. Phone Marquette 3258.

Minneapolis 1, Minn.—1121 Metropolitan Life Bldg.—
C. A. CARLSON, General Agent. Phone Main 4877.

New York 7, N. Y.—Woolworth Bldg., 233 Broadway—AUBREY O'HERRON, Gen. Eastern Agt.
W. L. GRANZEN, Assistant General Eastern Agent. Phone Worth 2-3400.

Philadelphia 2, Pa.—902 Girard Trust Co. Bldg.—O. W. HARRIS, Gen. Agt. Ph. Locust 7-7247.

Pittsburgh 19, Pa.—2210 Koppers Bldg.—H. A. LEECH, General Agent. Ph. Atlantic 4750.

Saginaw 6, Mich.—Potter St. Station—F. J. BYRNE, Division Frt. Agt. Phone 6171.

San Francisco 4, Cal.—409 Robert Dollar Building—
CHAS. L. BROWN, General Agent. Phone Exbrook 4771.

Seattle 1, Wash.—4418 White Bldg.—R. H. WEBB, Gen. Agt. Phone Elliot 6110.

St. Louis 3, Mo.—Room 1203, Plaza Olive Bldg., 1218 Olive Street—
C. W. BRANDENBURG, General Agent. Phone Main 5254.

Toledo 4, Ohio—515 Spitzer Bldg.—L. J. BYRNE, Division Freight Agent.
J. R. HARPER, General Agent. Phone Adams 1297.

Toronto 1, Ont.—1104 Canadian Pacific Building, 69 Yonge Street—
JOHN R. YEALLAND, General Agent. Phone Waverly 1588.

Washington 5, D. C.—809 15th St., N.W.—J. B. EDMUNDS, Assistant Gen. Freight Agent.
C. G. WHITE, General Agent. Phone National 5633.

Wilmington, N. C.—504 Murchison Bldg.—J. A. BODINE, General Agent. Phone 7622.

Winston-Salem 3, N. C.—618 Reynolds Bldg.—C. E. MATHIAS, General Agent. Phone 6553.

INDUSTRIAL DEVELOPMENT

C. H. SLAYMAN, Industrial Commissioner..... Detroit 2, Mich.
L. N. DE WEESE, Assistant Industrial Commissioner..... Detroit 2, Mich.
H. B. MAY, Industrial Agent..... Detroit 2, Mich.

GENERAL INFORMATION



CHILDREN under five years of age free, when accompanied by parent or guardian; five years of age and under twelve, one-half fare; twelve years of age or over, full fare.

ADJUSTMENT OF FARES—In cases of disagreement with conductor or agents, pay the fare required, take receipt and communicate with General Passenger Agent, Pere Marquette Railway, Detroit 2, Mich.

TICKETS USED OR PARTLY USED will be REDEEMED under tariff regulations at proper value. Send with full explanation to General Passenger Agent, Pere Marquette Railway, Detroit, 2, Mich.

TELEGRAPH AND EXPRESS. The Western Union Telegraph Company and Railway Express Agency, Inc. operate over the Pere Marquette lines in the United States; The Canadian Pacific Express Co. operates over the Pere Marquette lines in Canada.

TICKET OFFICES at stations are open approximately thirty minutes before the departure of passenger trains, affording passengers ample time to procure tickets and have their baggage checked.

STOP-OVERS within limit will be allowed on regular one-way tickets.

On certain round trip tickets—as summer and winter tourist tickets—stop-over is allowed at all intermediate stations. Inquire of Ticket Agent for full particulars.

CONDUCT OF EMPLOYEES—The Pere Marquette Railway Company aims to give its patrons satisfactory service at all times. Passengers are requested to report to the General Passenger Agent at Detroit 2, Mich., any instance of incivility or lack of attention on the part of employees of this company.

WHEN PLANNING A TRIP—USE THE MAP ON PAGES 12 and 13. You will find it interesting as well as helpful. Note the points between which you wish to travel. The map shows the territory to be covered and is particularly helpful in locating connecting points should your trip be off the line on which you begin your trip.

RAILROAD, SLEEPING AND PARLOR CAR FARES—between principal points and other information in connection therewith are shown on pages 16 and 17.

FOR FURTHER INFORMATION consult any Pere Marquette Railway agent or the representative nearest you—addresses shown on pages 20 and 21.

NOT RESPONSIBLE—Every effort is made to have the information shown herein accurate but the Pere Marquette Railway Company does not assume responsibility for errors in timetables, inconvenience or damage resulting from delayed trains or boats or failure to make connections with other carriers. The schedules shown herein are subject to change without notice.

BAGGAGE

BAGGAGE MAXIMUMS. No single piece of baggage exceeding 250 pounds in weight or single shipment, 72 inches in greatest dimension, or exceeding \$2,500 in value will be checked. Free allowances are subject to tariff stipulations as to contents, weight, value and size.

LIABILITY LIMITED. Excess value to be declared and paid for at time of checking.

BICYCLES (not Motor Cycles), **Baby Carriages, Dogs and Guns** are transported in baggage cars subject to tariff regulations.

LOST ARTICLES

LOST ARTICLES should be inquired for through General Passenger Agent, Pere Marquette Railway, Detroit 2, Mich.

NO RESPONSIBILITY IS ASSUMED for unchecked articles left in stations or cars.

RESERVATION REGULATIONS

Purchase your Sleeping, Parlor Car, and railroad ticket when making reservation. Do this as far in advance as possible. In case you find you cannot go on that date cancel your reservation at once.

At small points where Sleeping Car tickets are not available, agent will send for tickets. If time does not permit he can arrange for passenger to pick up ticket enroute.

New Service for Busy Travelers RESERVE SEAT BY TELEPHONE



BUY TICKET ON THE TRAIN NO WAITING IN LINES!

For busy Detroit-Grand Rapids travelers, who do not find it convenient to purchase tickets in advance, Pere Marquette offers a new time-saving optional seat reservation and ticket arrangement.

Seats on the streamlined **Pere Marquettes** may be reserved by telephone and tickets will be delivered to passengers on train while enroute to destination. It is as simple and easy as that.

In Detroit, just telephone Reservation Bureau, RAndolph 3885. In Grand Rapids, phone City Ticket Office, 9-0111. In Lansing, phone 4-7431. Space will be reserved in your name and you can board the train directly upon arrival at station. The gateman will know about your reservation and hand you your seat check. You can pay for your ticket while enroute.

This special telephone accommodation is, of course, in addition to established methods of arranging reservations in person or calling City or Depot Ticket Offices and then picking up tickets prior to boarding trains.

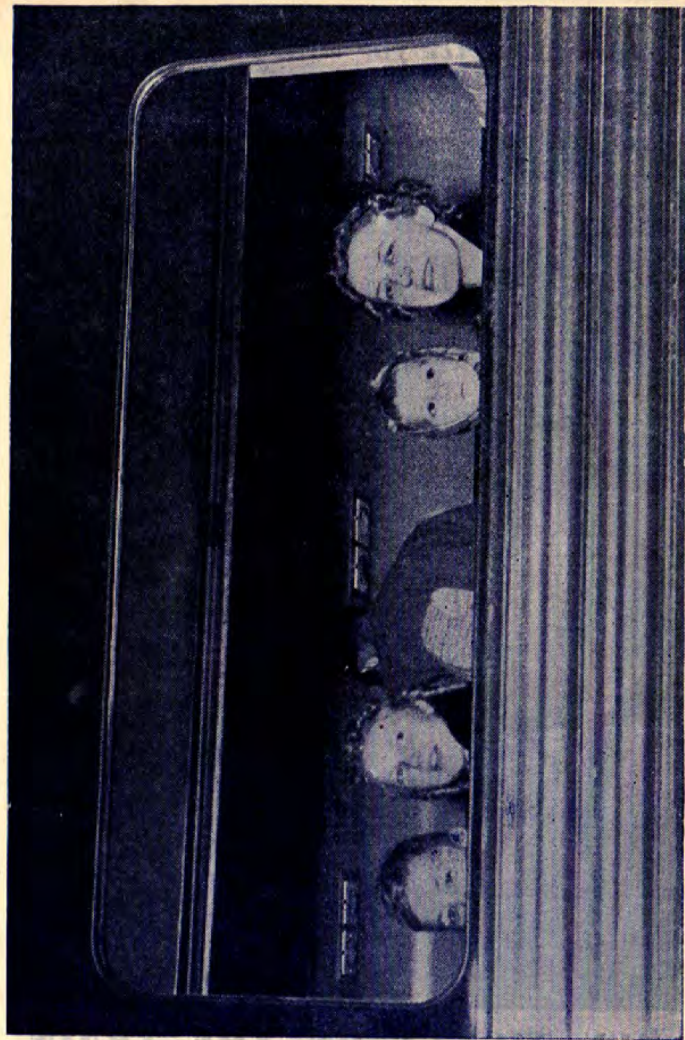
The Carlsons of Phoenix, Arizona ride The Pere Marquette!

Aboard No. 2, gliding out of Grand Rapids on the inaugural run of the new Streamliner August 10, were members of the Floyd Carlson family of 733 E. Portland, Phoenix, Arizona, vacationing in Michigan.

Pictured through the wide window of their deluxe Pere Marquette coach are Reuben John, age 8, Marilyn Joyce, 11, Marcia, 3, and Mrs. Carlson. It's the first train ride in her life for Marcia; it's Reuben John's second.

SAYS MRS. CARLSON:

"It's hard to believe that both rich and poor can ride in such luxury and comfort for so reasonable a price. It's the only way to travel with children . . . there's so much here to make them comfortable. Will be so glad when that age will come when streamliners as these will be everywhere . . . I'll always remember this high point in our life."



The new streamlined diesel-powered Pere Marquettes in service between Detroit, Lansing and Grand Rapids are dream trains come true! Here's swift, exciting train travel with lounge car luxuries at regular coach fares. Relax, smoke, listen to the radio in the lounge section that's part of every coach. Engineering advances, too, have brought smoother starts and stops and all around improved riding stability. All these Pere Marquette features help make coach travel more enjoyable than ever.



Roll in luxury on
The PERE MARQUETTES