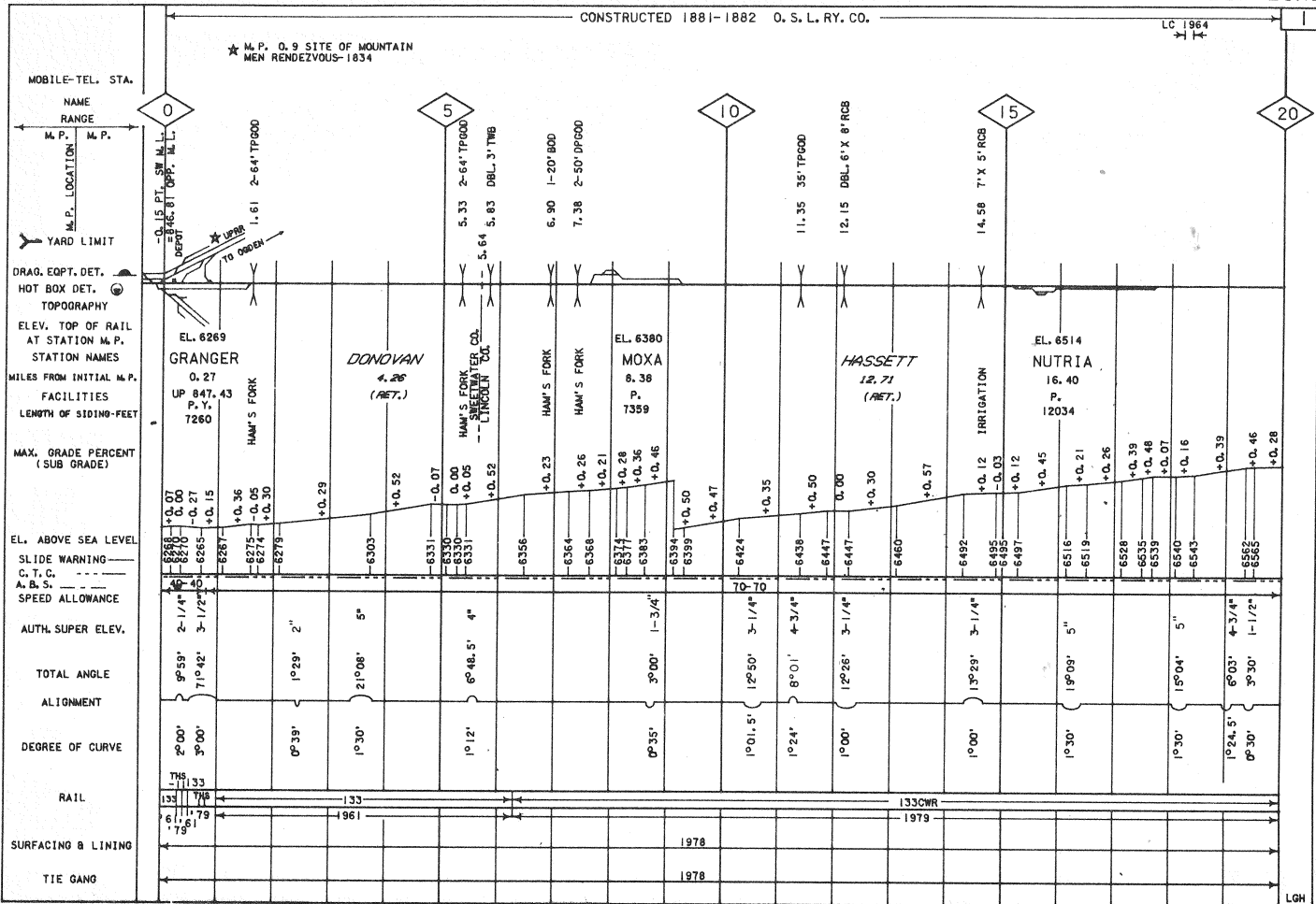


CONSTRUCTED 1881-1882 O. S. L. RY. CO.

LC 1964

★ M. P. 0.9 SITE OF MOUNTAIN MEN RENDEZVOUS-1834

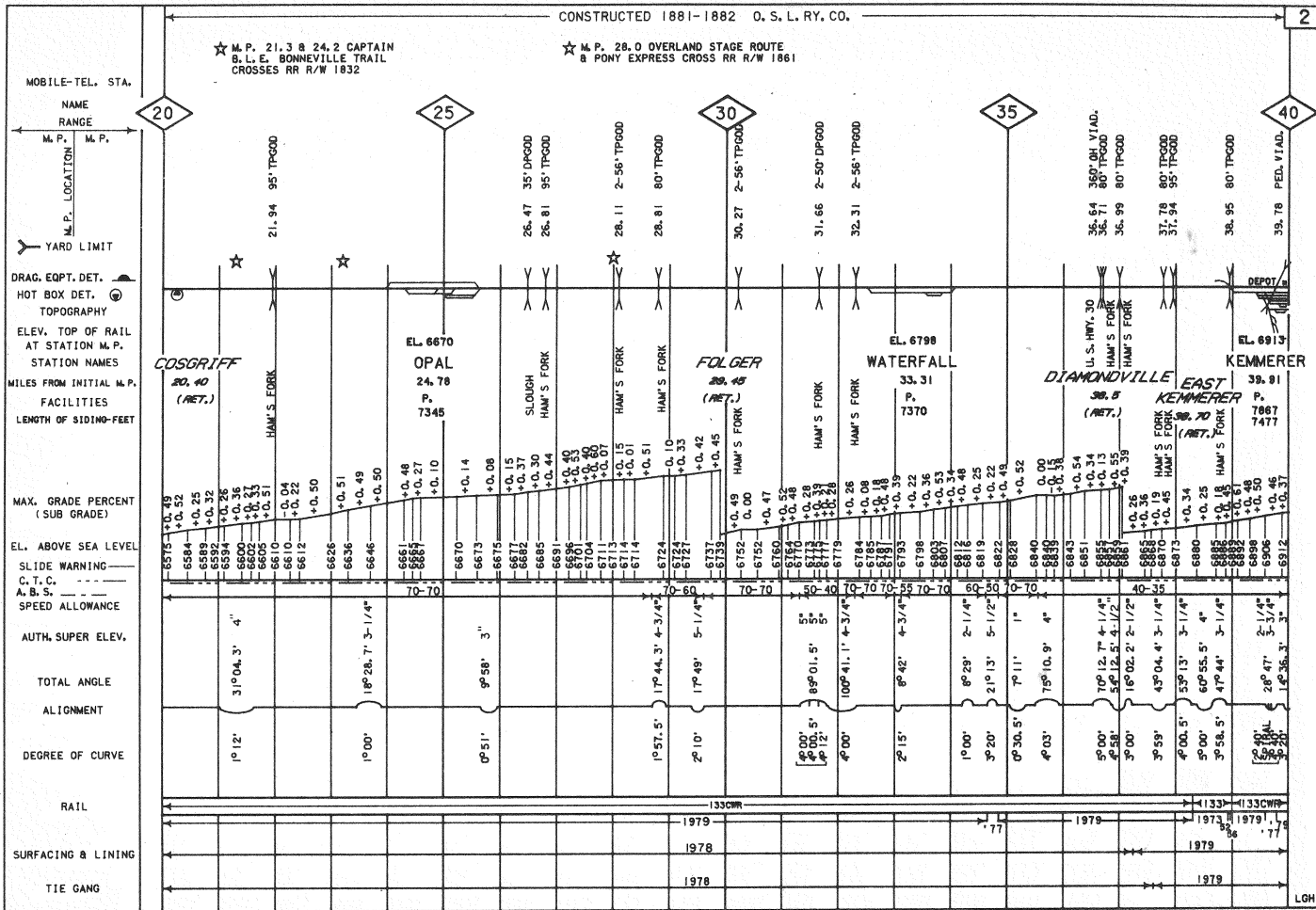


RAIL, SURFACING & LINING AND TIE GANG CORRECTED FOR JANUARY 1, 1980

ALIGNMENT & PROFILE CORRECTED FOR JANUARY 1, 1980

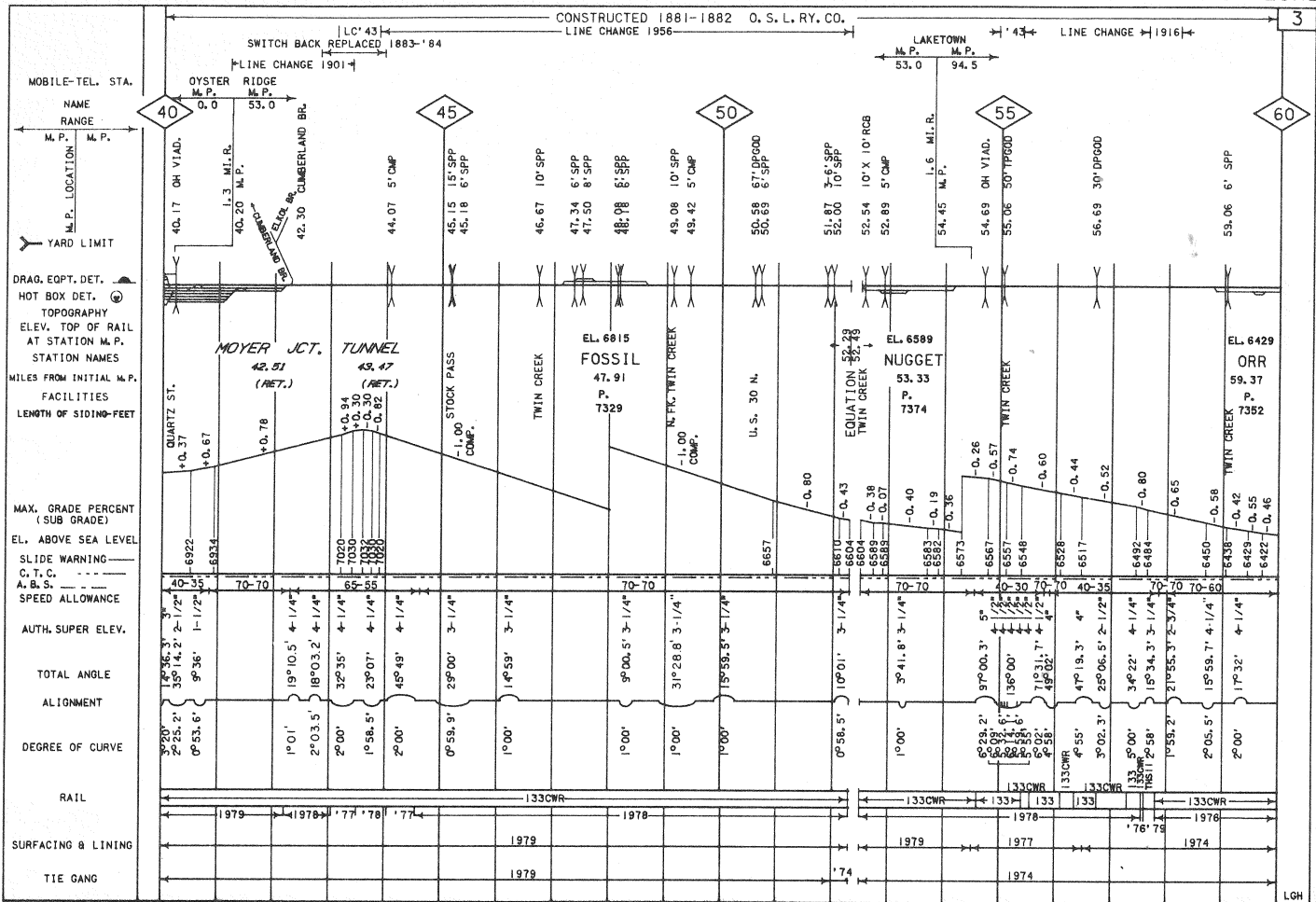
LGH

CONSTRUCTED 1881-1882 O. S. L. RY. CO.



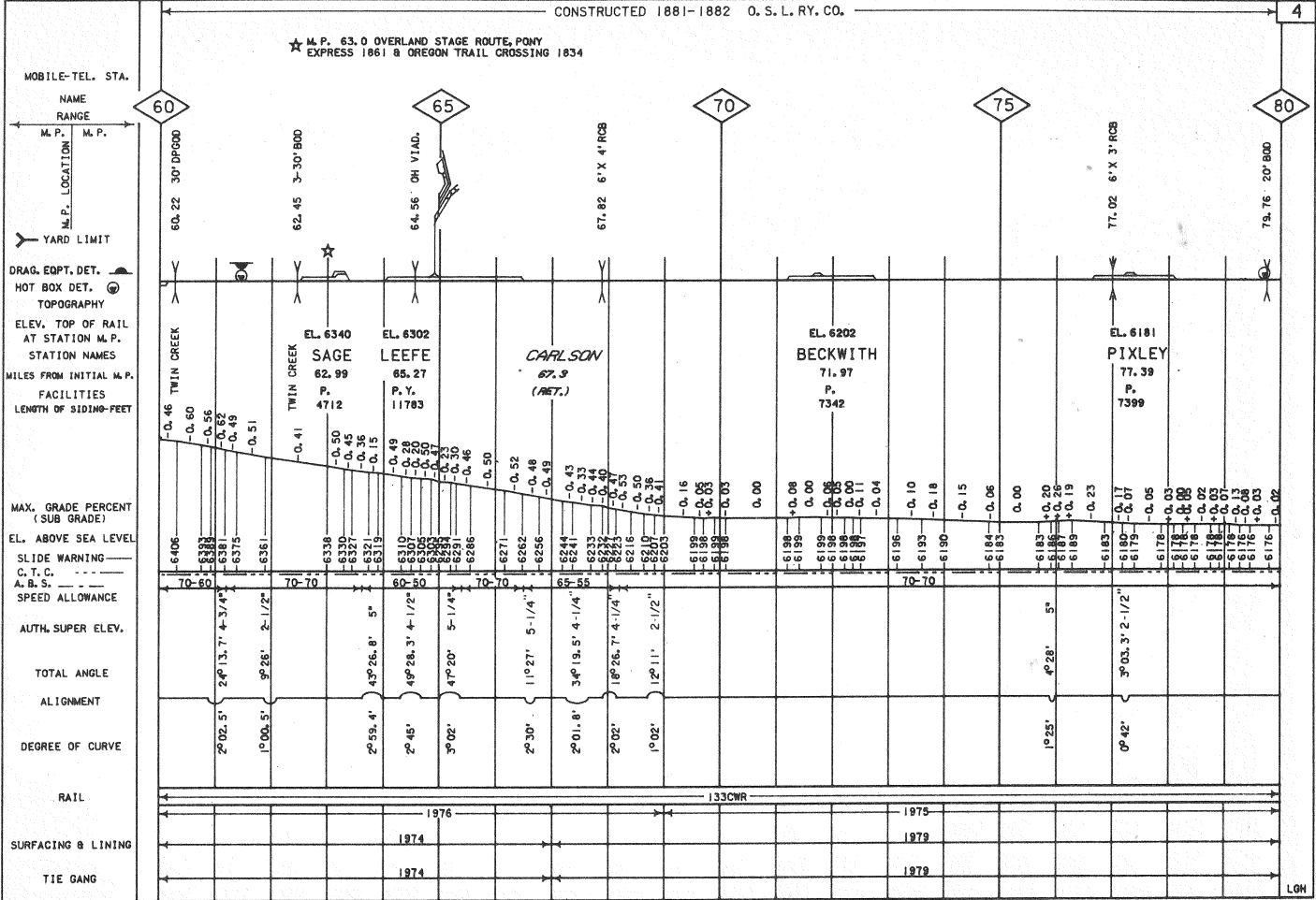
RAIL, SURFACING & LINING AND TIE GANG CORRECTED FOR JANUARY 1, 1980

ALIGNMENT & PROFILE CORRECTED FOR JANUARY 1, 1980



CONSTRUCTED 1881-1882 O. S. L. RY. CO.

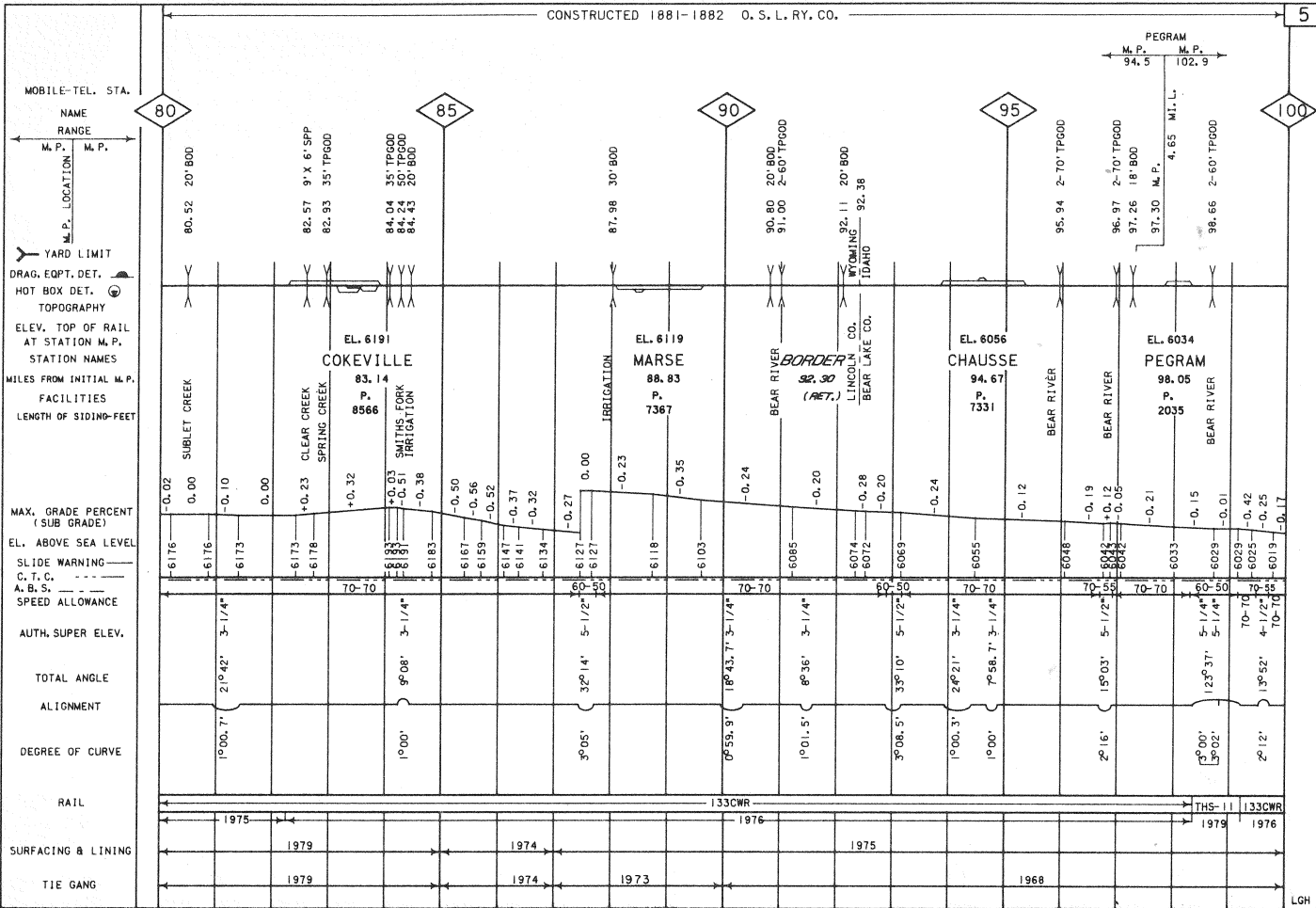
★ M. P. 63.0 OVERLAND STAGE ROUTE, PONY EXPRESS 1861 & OREGON TRAIL CROSSING 1834



RAIL, SURFACING & LINING AND TIE GANG CORRECTED FOR JANUARY 1, 1980

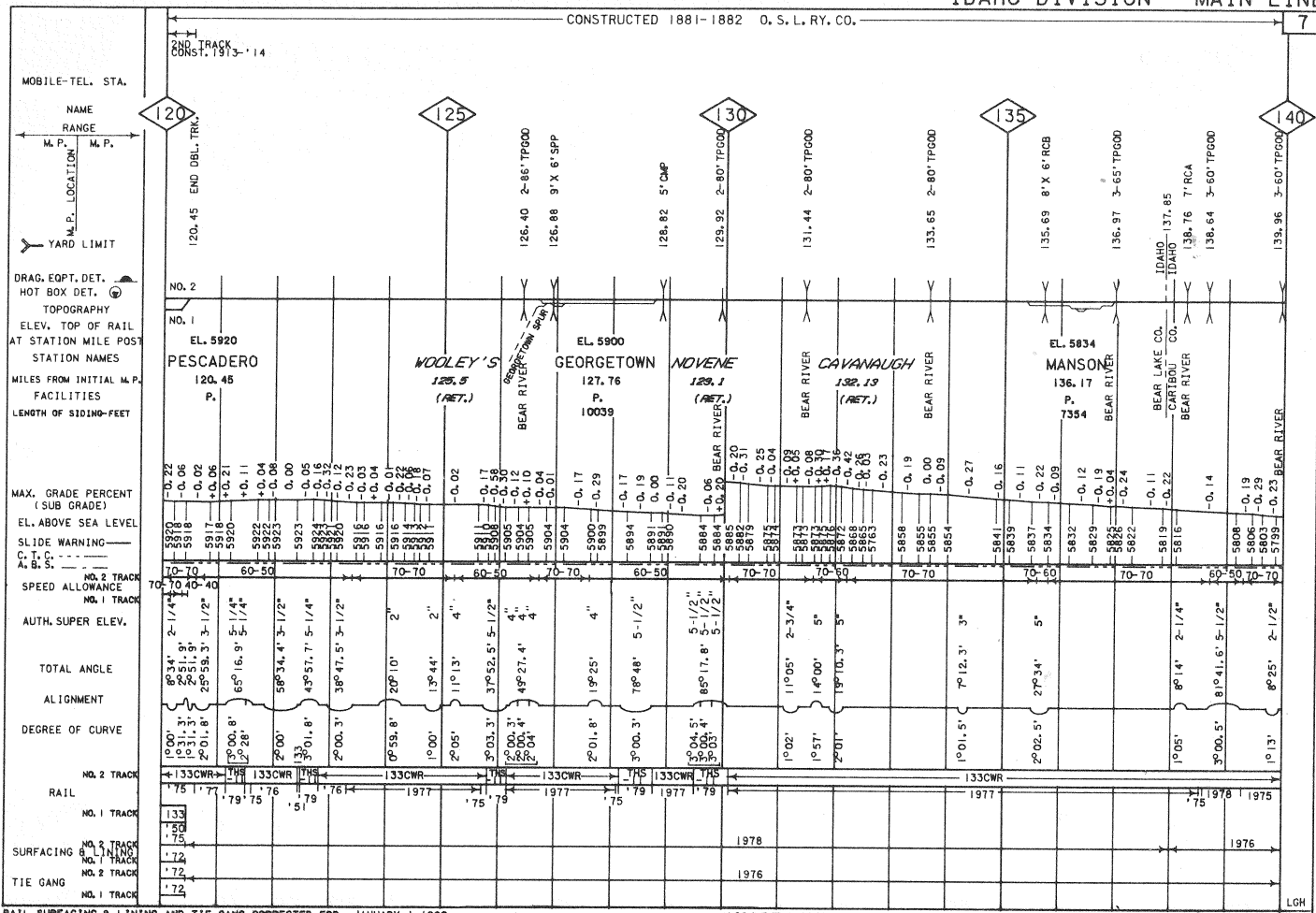
ALIGNMENT & PROFILE CORRECTED FOR JANUARY 1, 1980

CONSTRUCTED 1881-1882 O. S. L. RY. CO.

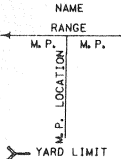


RAIL, SURFACING & LINING AND TIE GANG CORRECTED FOR JANUARY 1, 1980

ALIGNMENT & PROFILE CORRECTED FOR JANUARY 1, 1980



MOBILE-TEL. STA.



DRAG. EOPT. DET.
HOT BOX DET.
TOPOGRAPHY
ELEV. TOP OF RAIL AT STATION MILE POST
STATION NAMES
MILES FROM INITIAL M. P.
FACILITIES
LENGTH OF SIDING- FEET

MAX. GRADE PERCENT (SUB GRADE)
EL. ABOVE SEA LEVEL
SLIDE WARNING
C. T. C.
A. B. S.

SPEED ALLOWANCES
AUTH. SUPER ELEV.
TOTAL ANGLE
ALIGNMENT
DEGREE OF CURVE

RAIL
NO. 1 TRACK
SURFACING & LINING
NO. 1 TRACK
NO. 2 TRACK
TIE GANG
NO. 1 TRACK

120.45 END OBL. TRK.

NO. 2
NO. 1
EL. 5920
PESCADERO
120.45
P.

125

WOOLEY'S
129.5
(RET.)

126.40 2-66' TP600

126.88 9' X 6' SPP

128.82 5' CMP

130

EL. 5900
GEORGETOWN
127.76
P.
10039

129.92 2-80' TP600

131.44 2-80' TP600

135

EL. 5834
MANSON
136.17
P.
7354

135.69 8' X 6' RCB

136.97 3-65' TP600

IDAHO 137.85

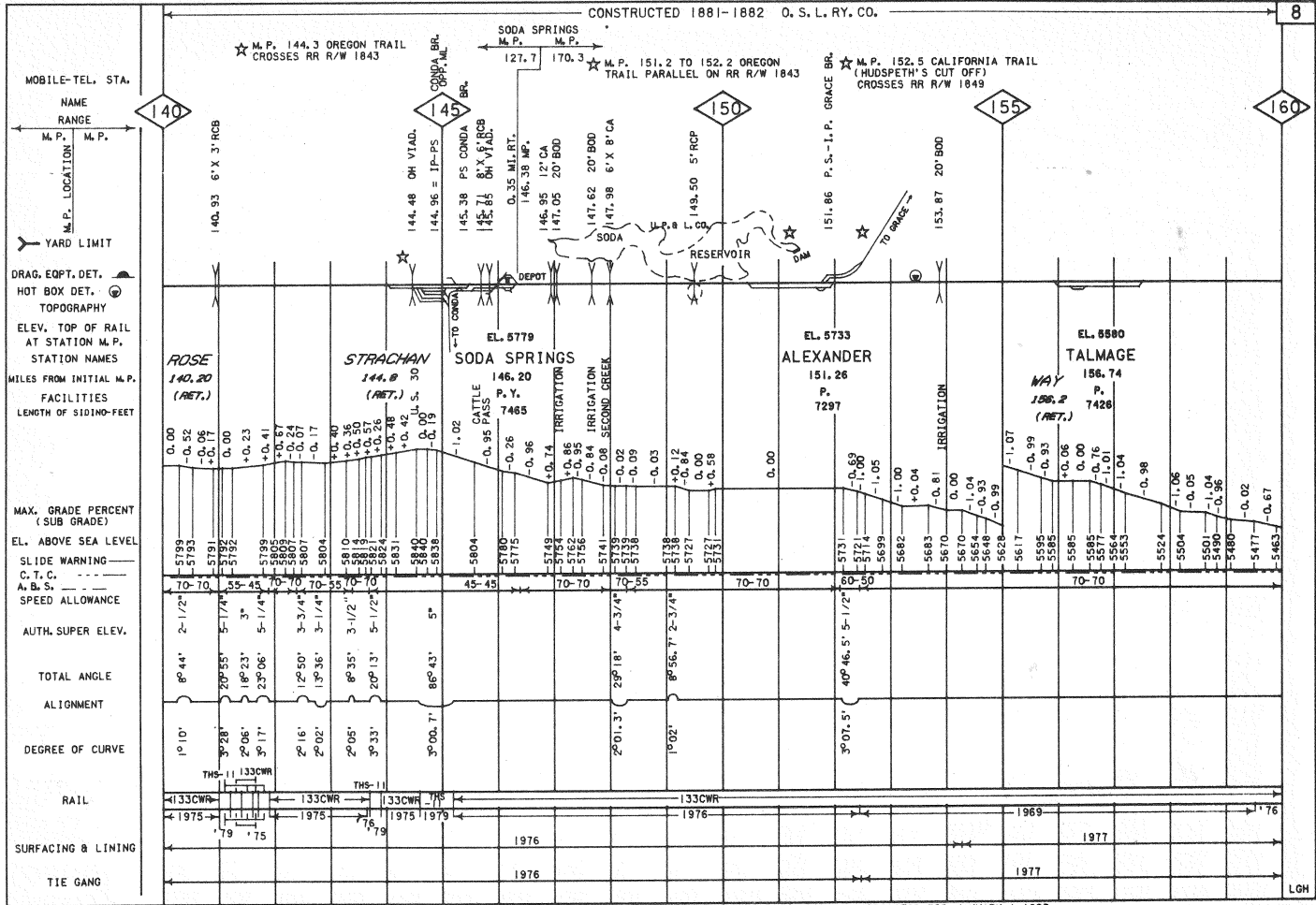
IDAHO 138.76 7' RCA

138.64 3-60' TP600

139.96 3-60' TP600

BEAR RIVER

LGH



RAIL, SURFACING & LINING AND TIE GANG CORRECTED FOR JANUARY 1, 1980

ALIGNMENT & PROFILE CORRECTED FOR JANUARY 1, 1980

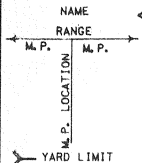
LGH

CONSTRUCTED 1881-1882 O. S. L. RY. CO.

EXT'D 1913-1914 2ND TRK. CONST.

9

MOBILE-TEL. STA.



DRAG. EQPT. DET. HOT BOX DET. TOPOGRAPHY ELEV. TOP OF RAIL AT STATION MILE POST STATION NAMES MILES FROM INITIAL M.P. FACILITIES LENGTH OF SIDING-FEET

MAX. GRADE PERCENT (SUB GRADE) EL. ABOVE SEA LEVEL SLIDE WARNING C.T.C. A. B. S.

SPEED ALLOWANCE NO. 2 TRACK NO. 1 TRACK

AUTH. SUPER ELEV.

TOTAL ANGLE

ALIGNMENT

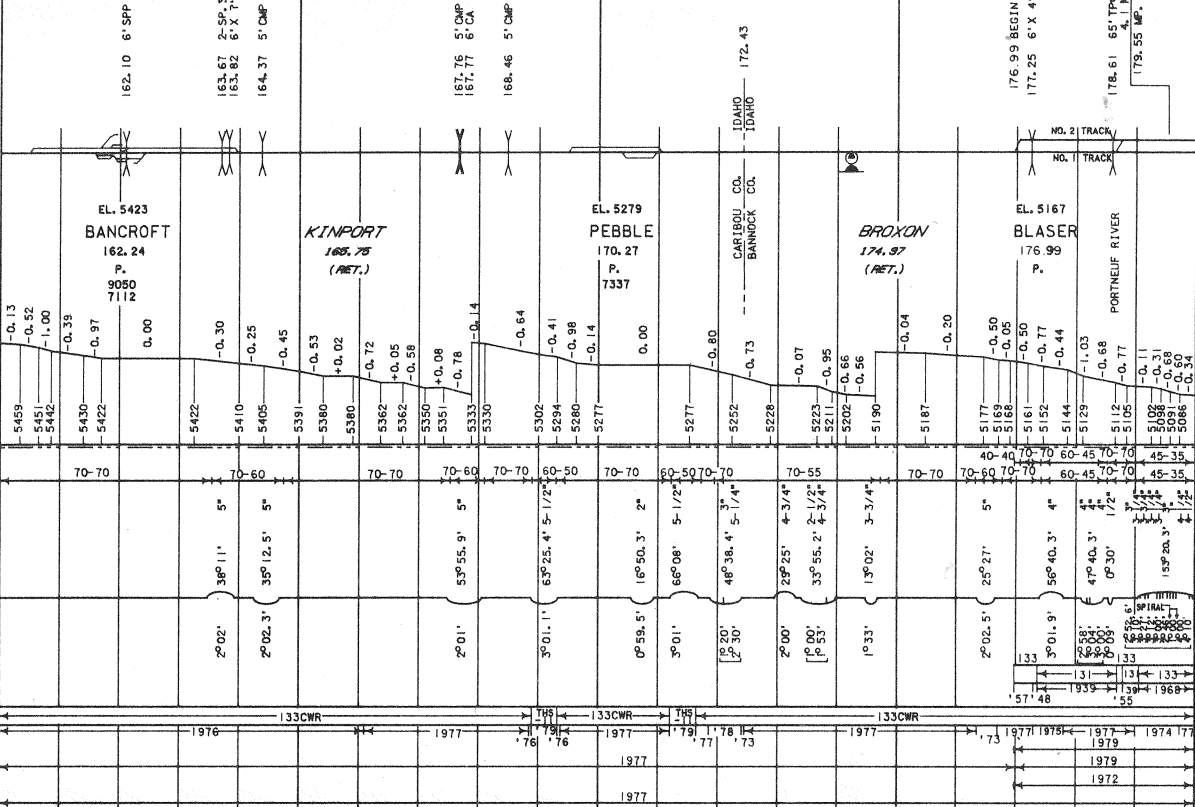
DEGREE OF CURVE

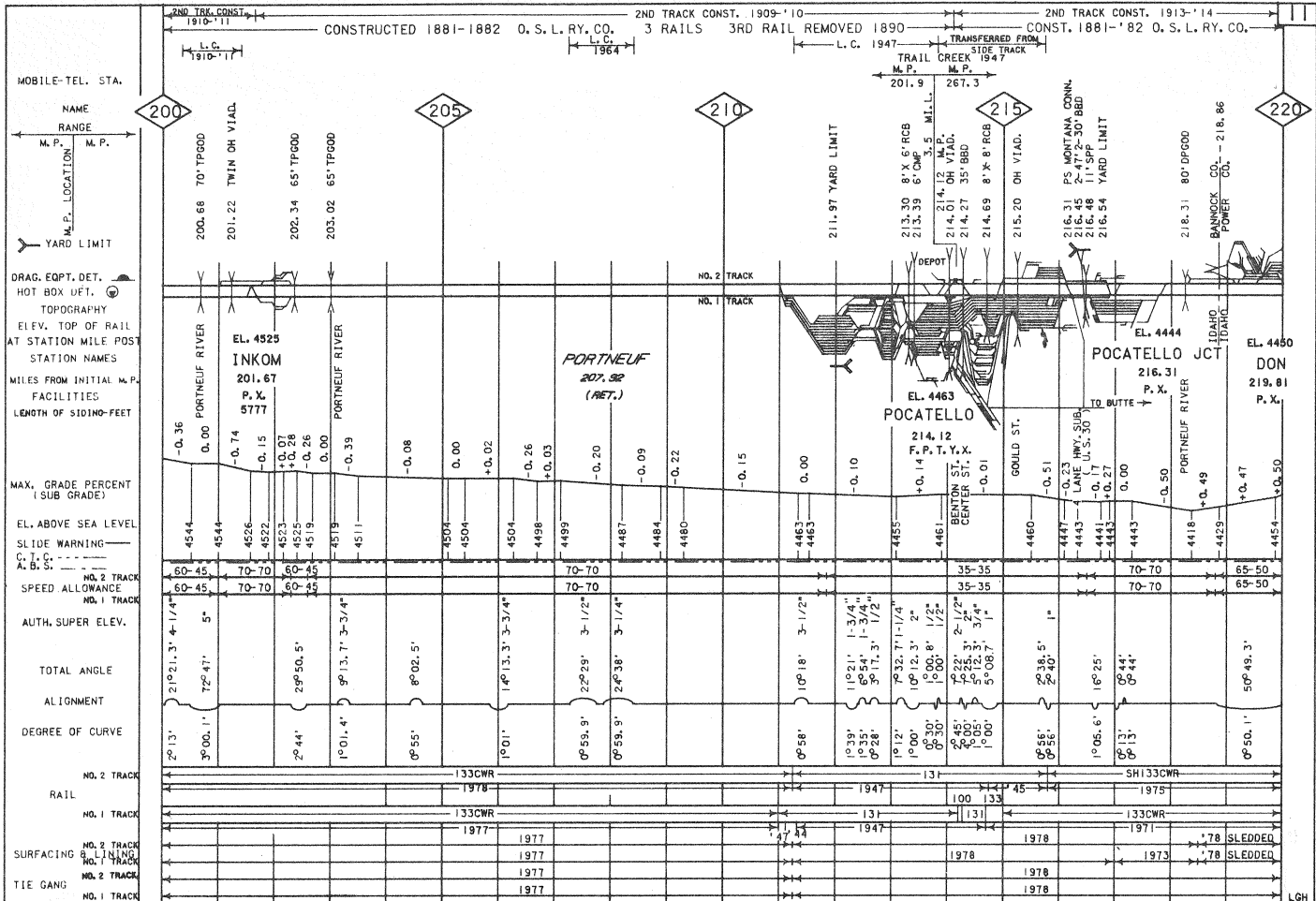
NO. 2 TRACK RAIL

NO. 1 TRACK

SURFACING NO. 2 TRACK LINTING NO. 1 TRACK

TIE GANG NO. 2 TRACK NO. 1 TRACK





RAIL, SURFACING & LINING AND TIE GANG CORRECTED FOR JANUARY 1, 1980

ALIGNMENT & PROFILE CORRECTED FOR JANUARY 1, 1980

211 212 213 214 215 216 217 218

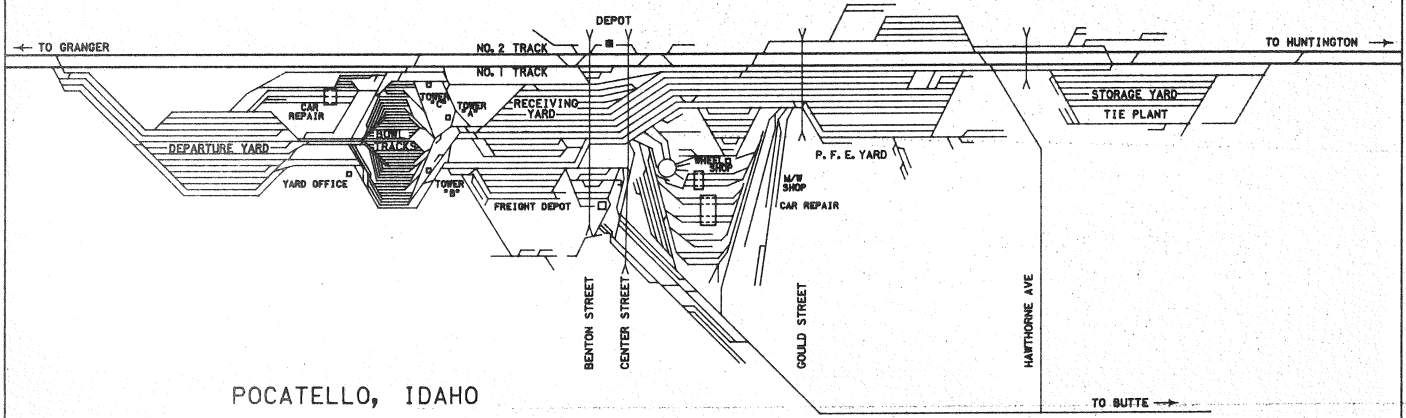
214.01 OH VIAD.

214.27 35' BBD

215.20 OH VIAD.

216.22 MONTANA CONNL

216.45 2-47'-2-30' BBD



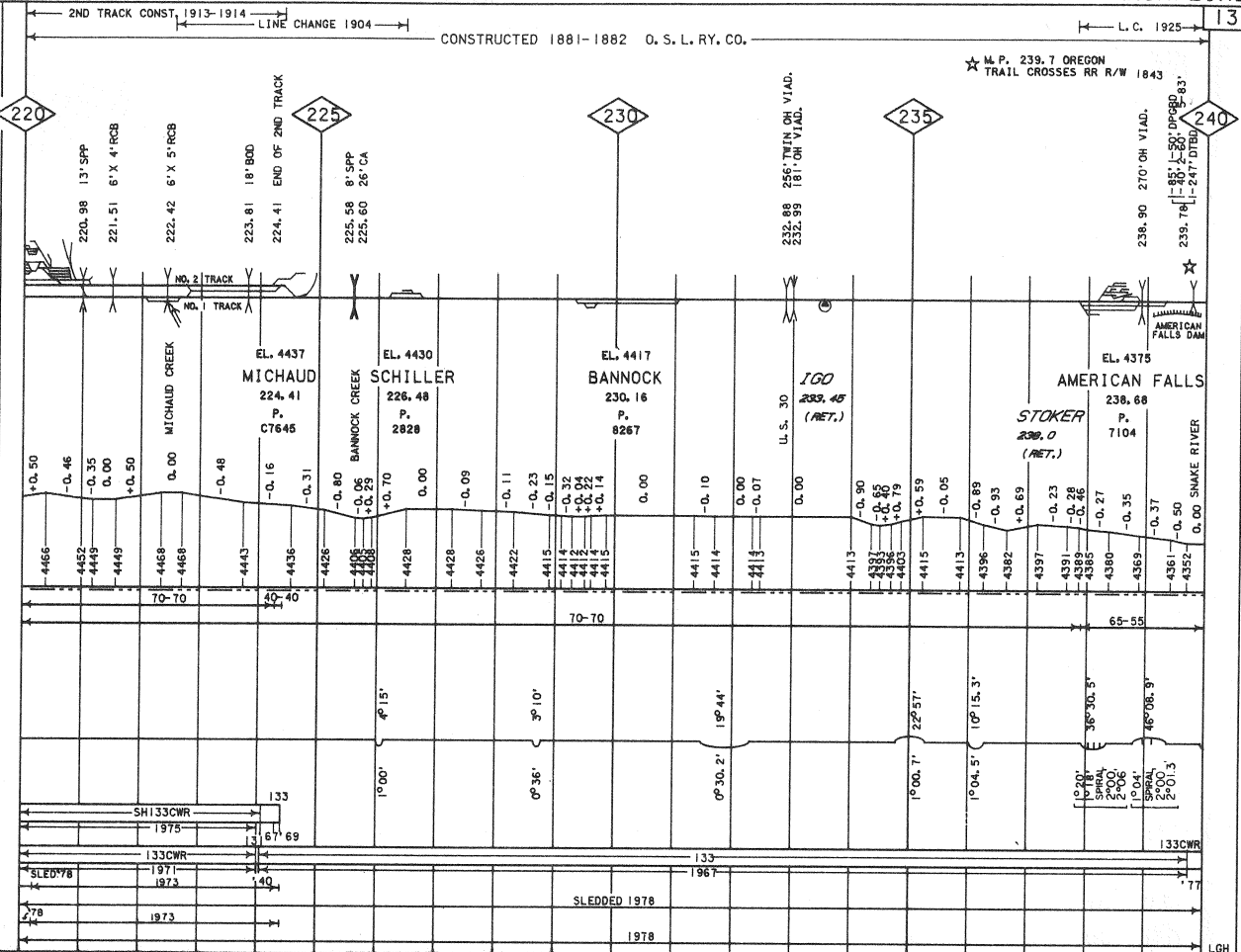
POCATELLO, IDAHO

TO BUTTE →

CONSTRUCTED 1881-1882 O. S. L. RY. CO.

L. C. 1925

MOBILE-TEL. STA.
NAME RANGE
M. P. M. P.
M. P. LOCATION
YARD LIMIT



DRAG, EOPT. DET.
HOT BOX DET.
TOPOGRAPHY
ELEV. TOP OF RAIL
AT STATION MILE POST
STATION NAMES
MILES FROM INITIAL M. P.
FACILITIES
LENGTH OF SIDING- FEET
MAX. GRADE PERCENT
(SUB GRADE)
EL. ABOVE SEA LEVEL
SLIDE WARNING
C. T. C.
A. B. S.
NO. 2 TRACK
SPEED ALLOWANCE
NO. 1 TRACK
AUTH. SUPER ELEV.
TOTAL ANGLE
ALIGNMENT
DEGREE OF CURVE
NO. 2 TRACK
RAIL
NO. 1 TRACK
SURFACING
NO. 2 TRACK
NO. 1 TRACK
TIE GANG
NO. 2 TRACK
NO. 1 TRACK

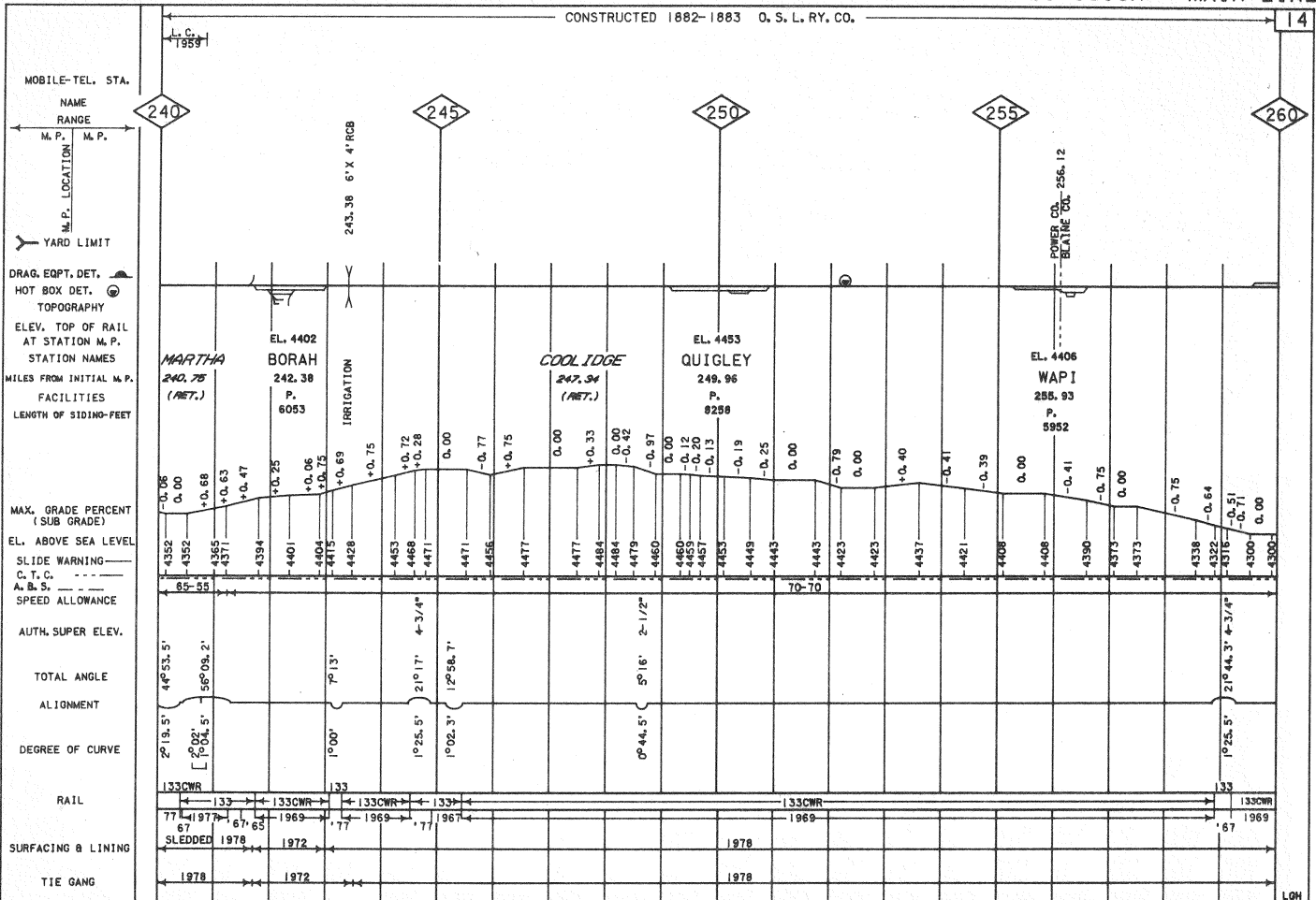
RAIL, SURFACING & LINING AND TIE GANG CORRECTED FOR JANUARY 1, 1980

ALIGNMENT & PROFILE CORRECTED FOR JANUARY 1, 1980

LGH

CONSTRUCTED 1882-1883 O. S. L. RY. CO.

14

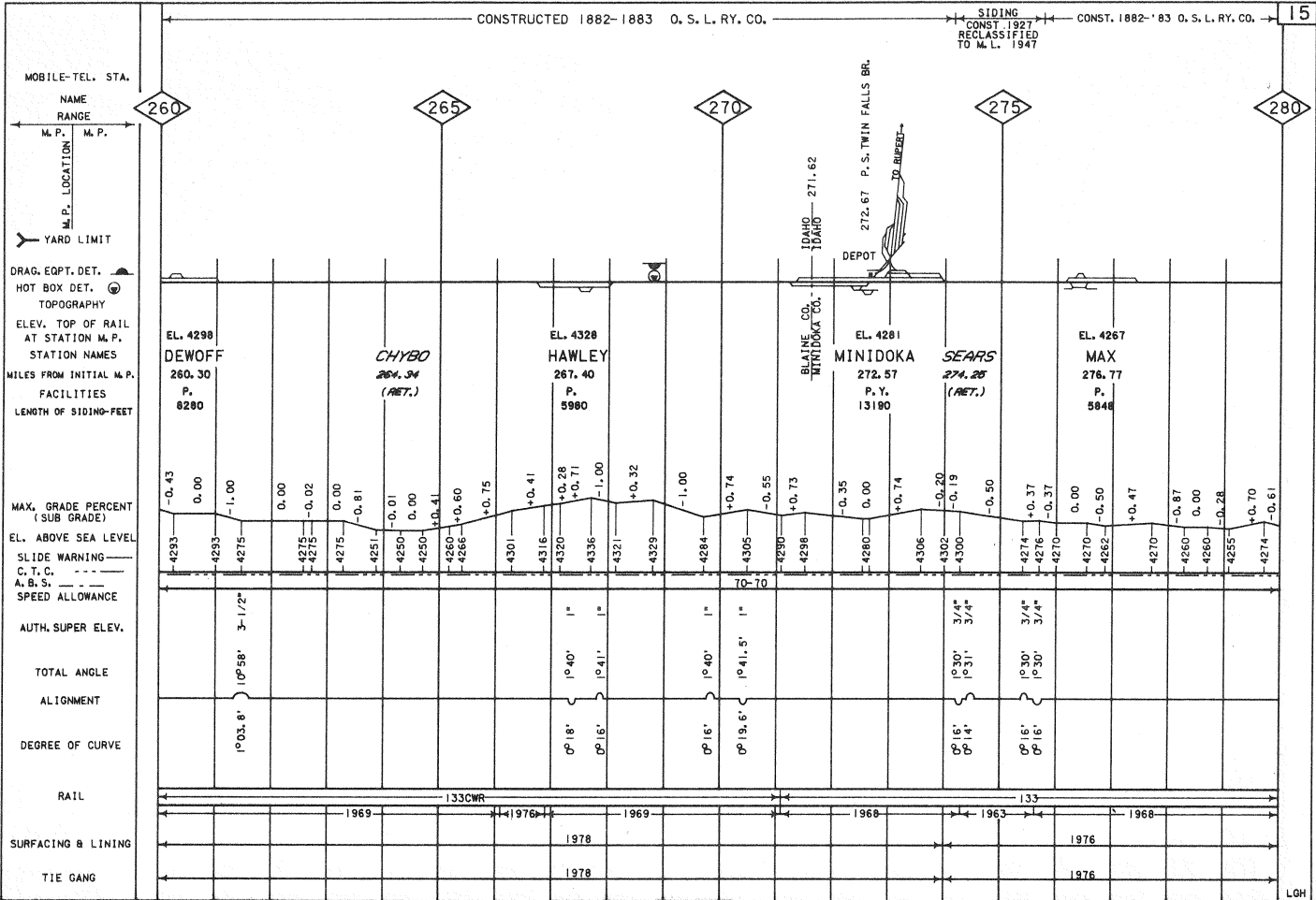


LOH

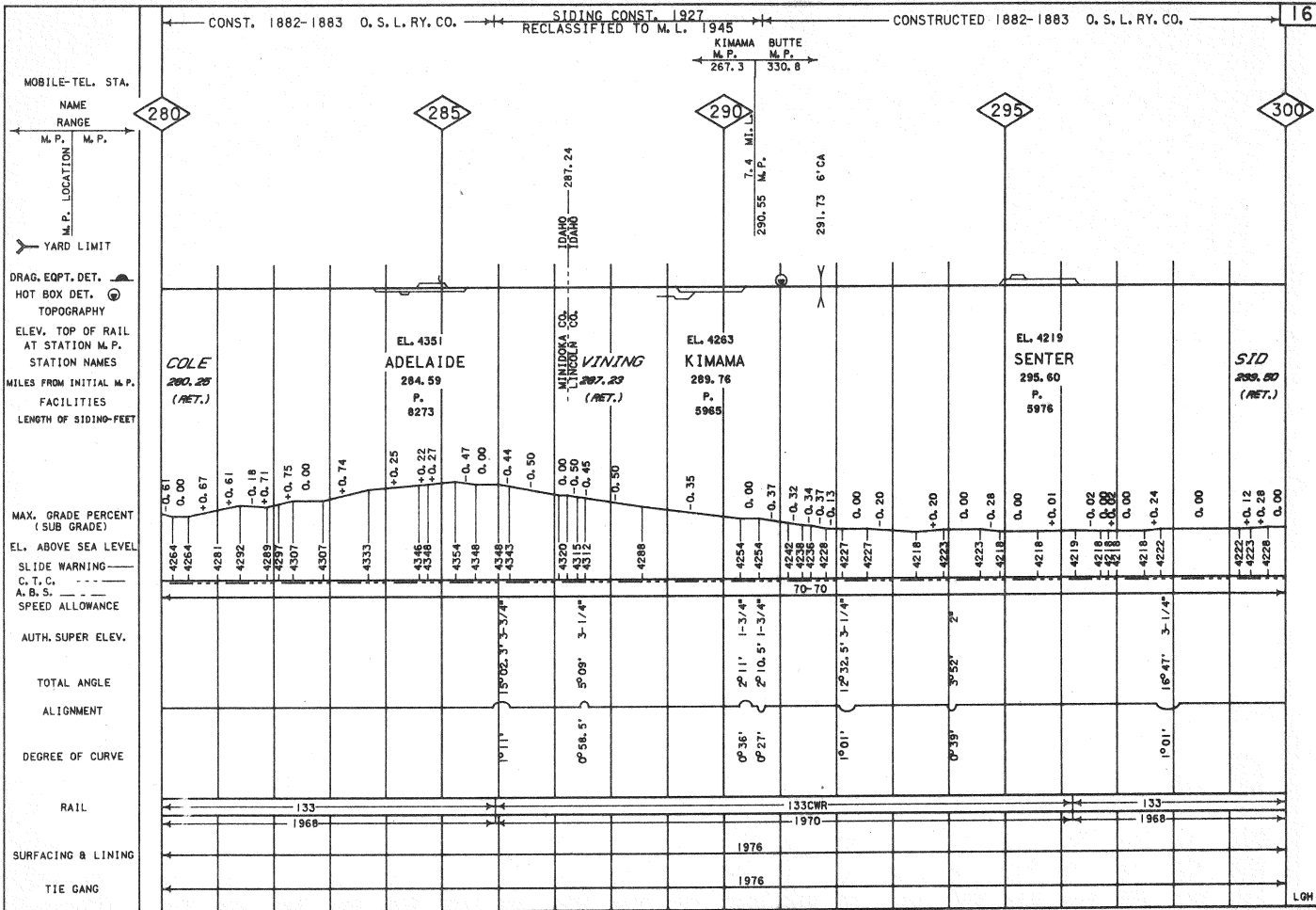
CONSTRUCTED 1882-1883 O. S. L. RY. CO.

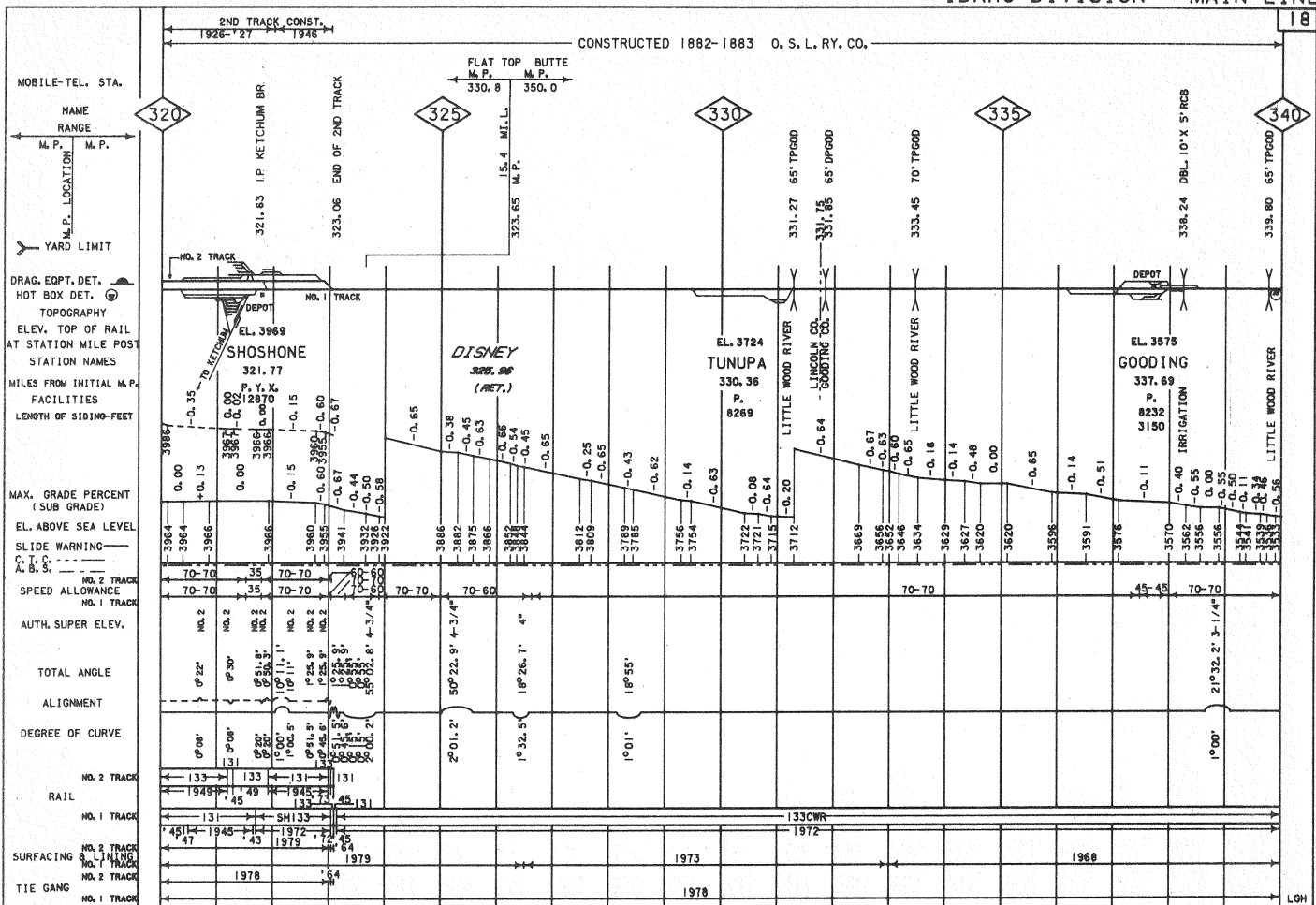
SIDING
CONST. 1927
RECLASSIFIED
TO M. L. 1947
CONST. 1882-'83 O. S. L. RY. CO.

15



LGH





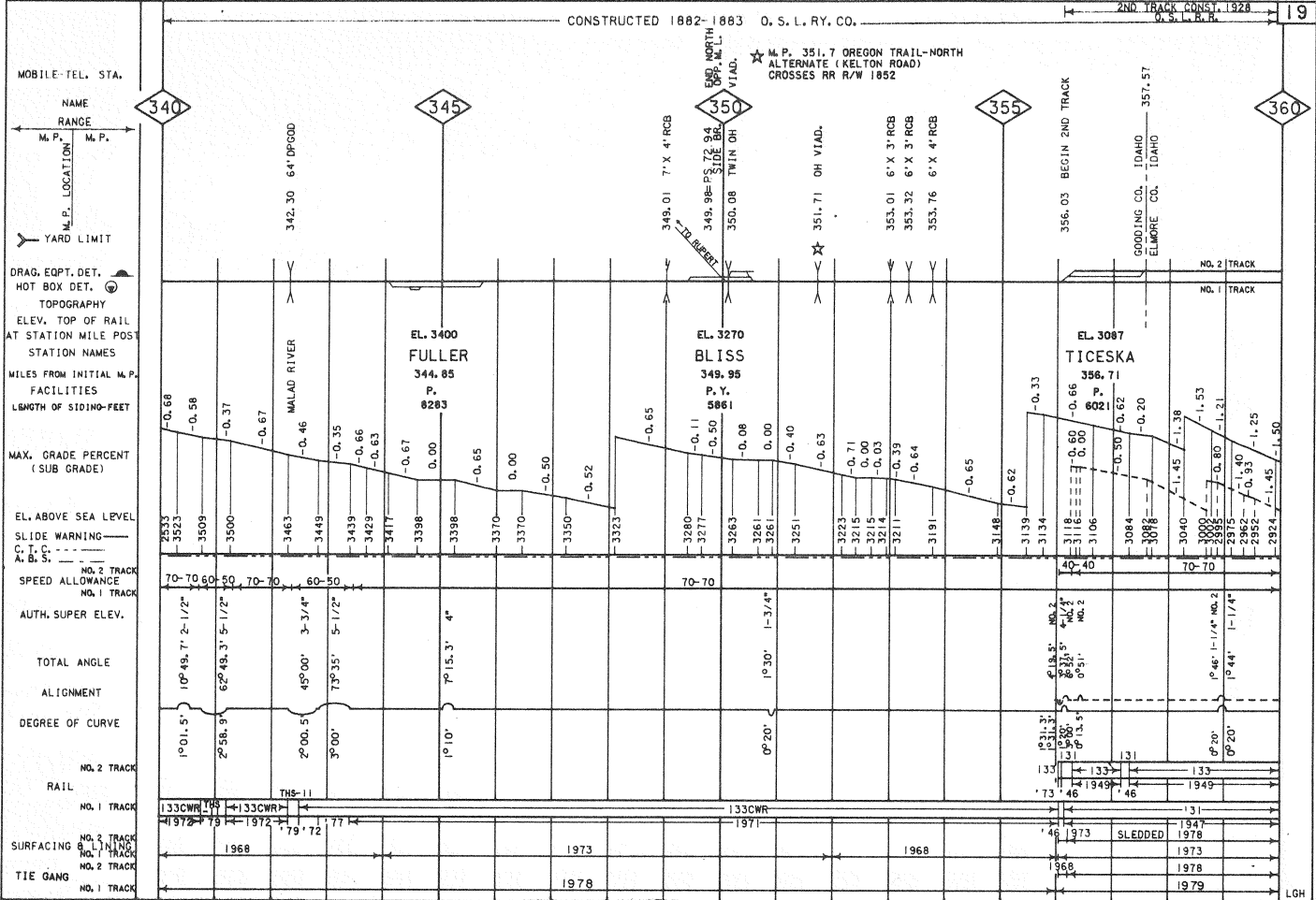
RAIL, SURFACING & LINDING AND TIE GANG CORRECTED FOR JANUARY 1, 1980

ALIGNMENT & PROFILE CORRECTED FOR JANUARY 1, 1980

LOH

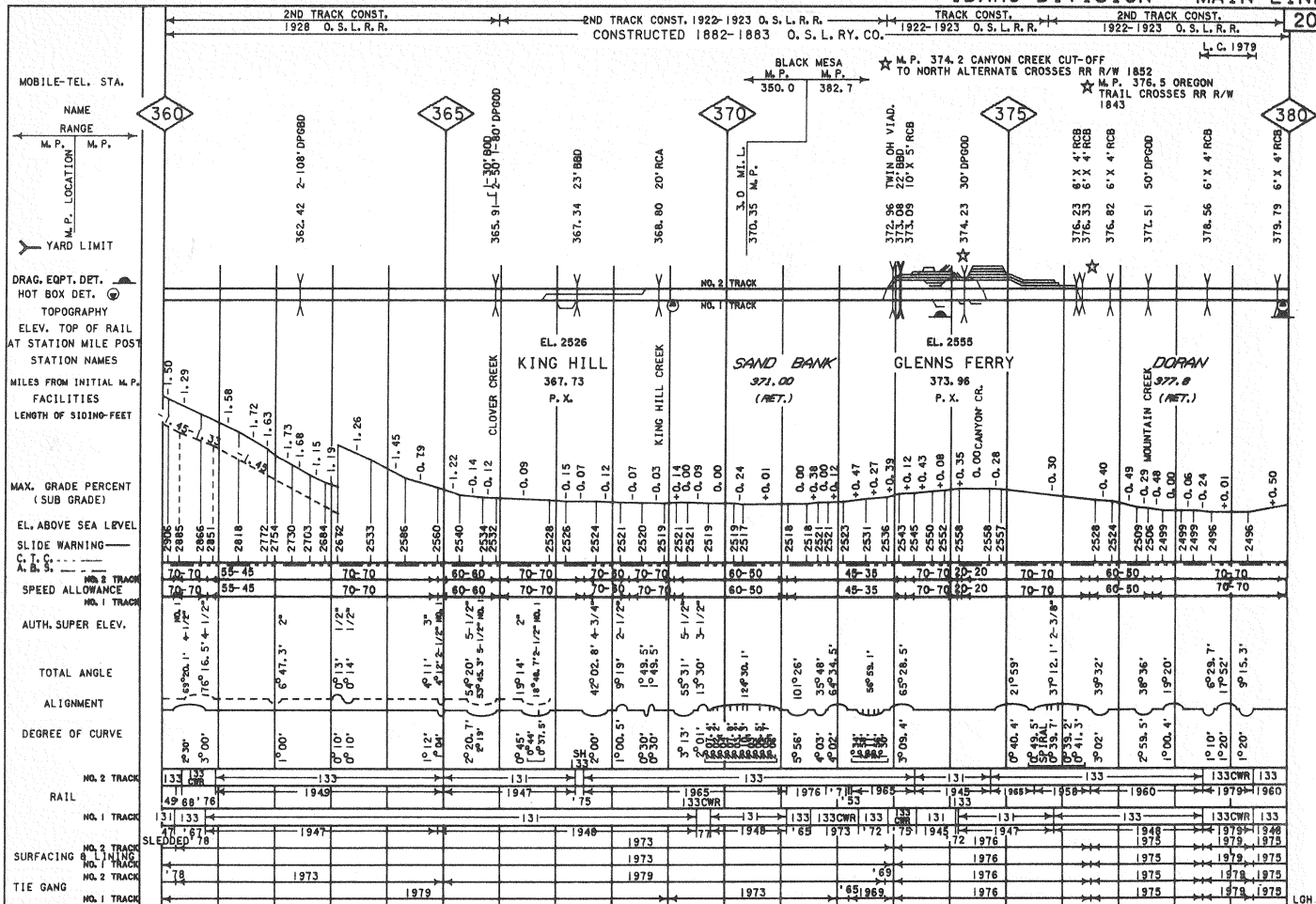
CONSTRUCTED 1882-1883 O. S. L. RY. CO.

2ND TRACK CONSTR. 1928



RAIL, SURFACING & LINING AND TIE GANG CORRECTED FOR JANUARY 1, 1980

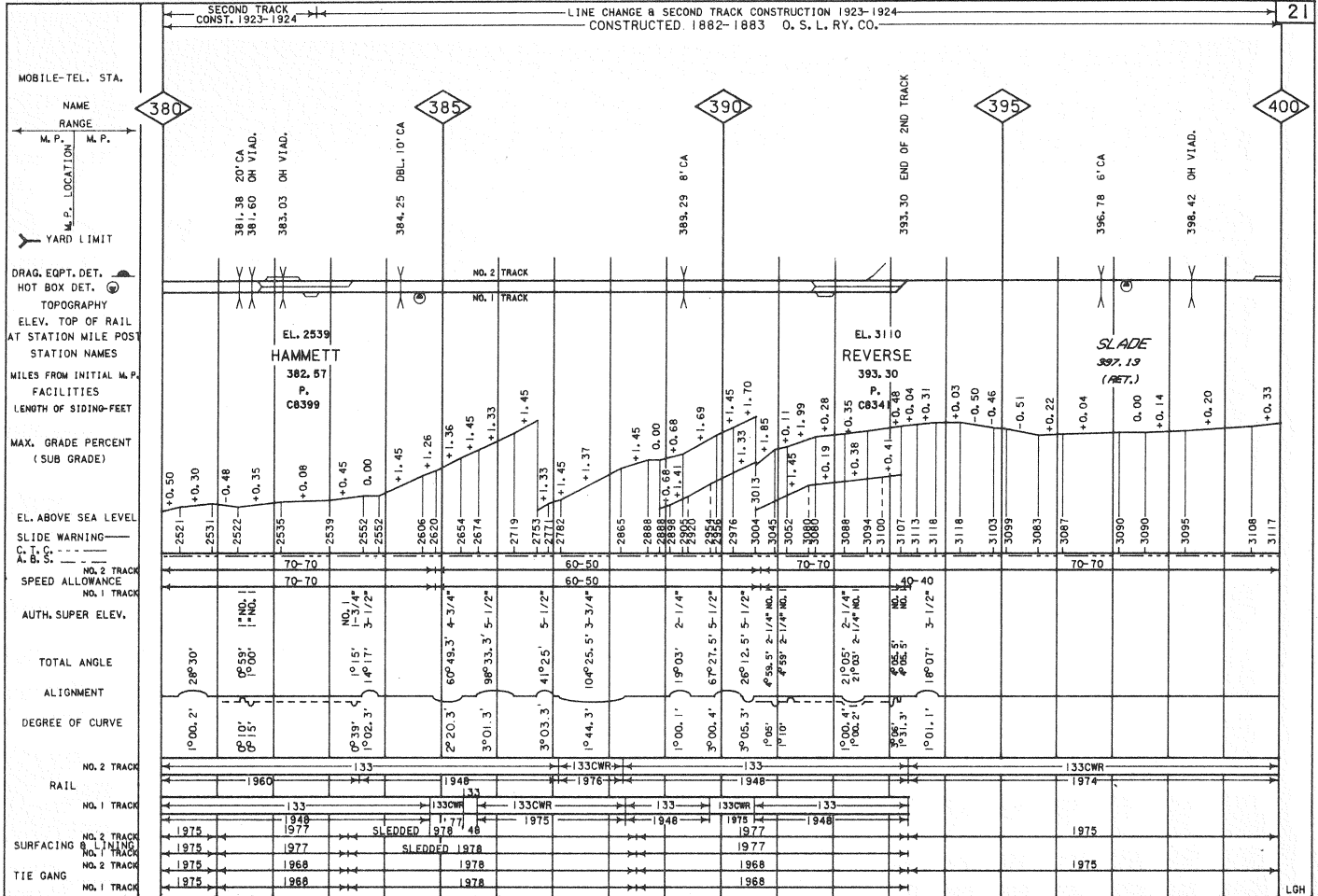
ALIGNMENT & PROFILE CORRECTED FOR JANUARY 1, 1980



RAIL SURFACING & LINING AND TIE GANG CORRECTED FOR JANUARY 1, 1980

ALIGNMENT & PROFILE CORRECTED FOR JANUARY 1, 1980

LGH

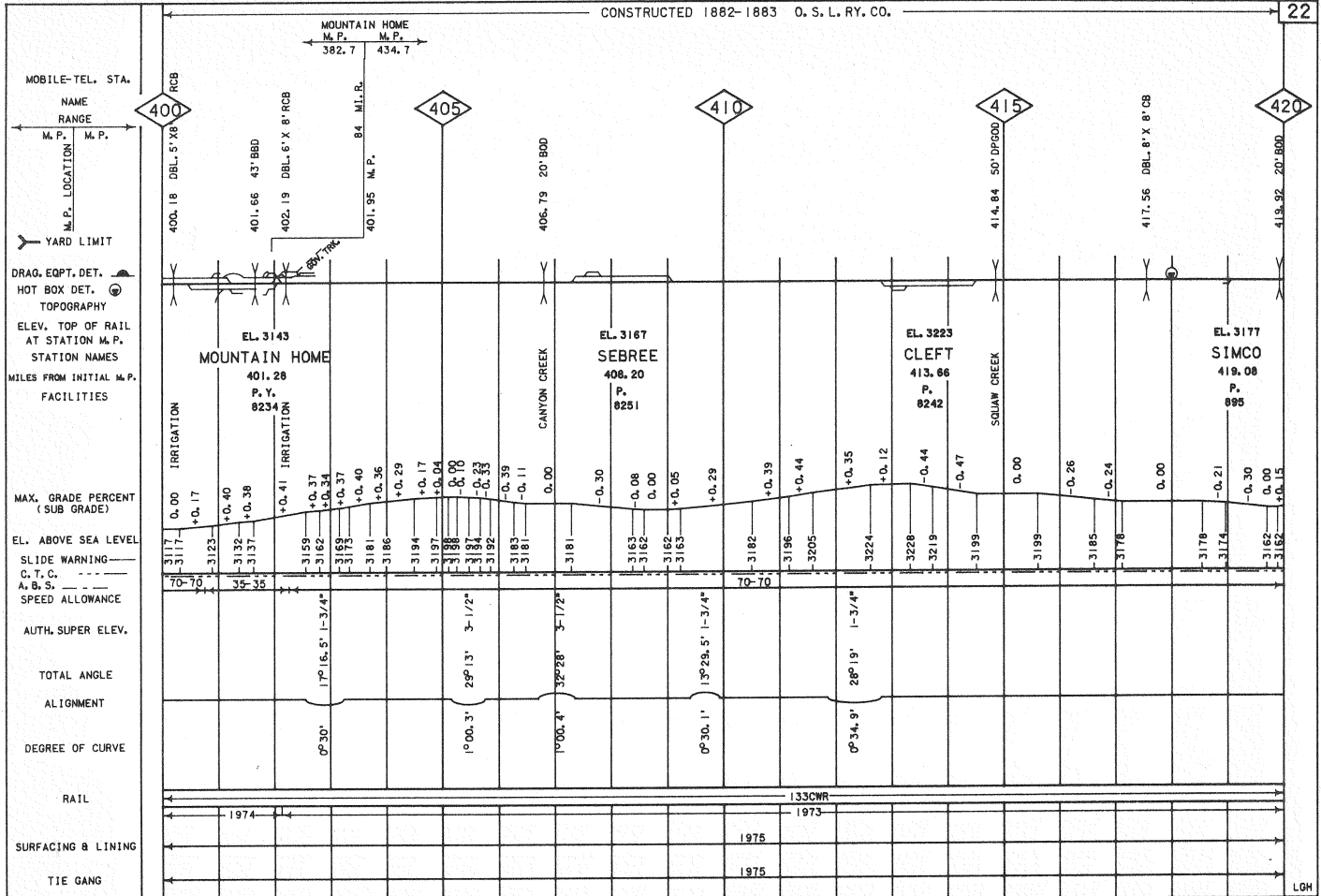


RAIL, SURFACING & LINING AND TIE GANG CORRECTED FOR JANUARY 1, 1980

ALIGNMENT & PROFILE CORRECTED FOR JANUARY 1, 1980

CONSTRUCTED 1882-1883 O. S. L. RY. CO.

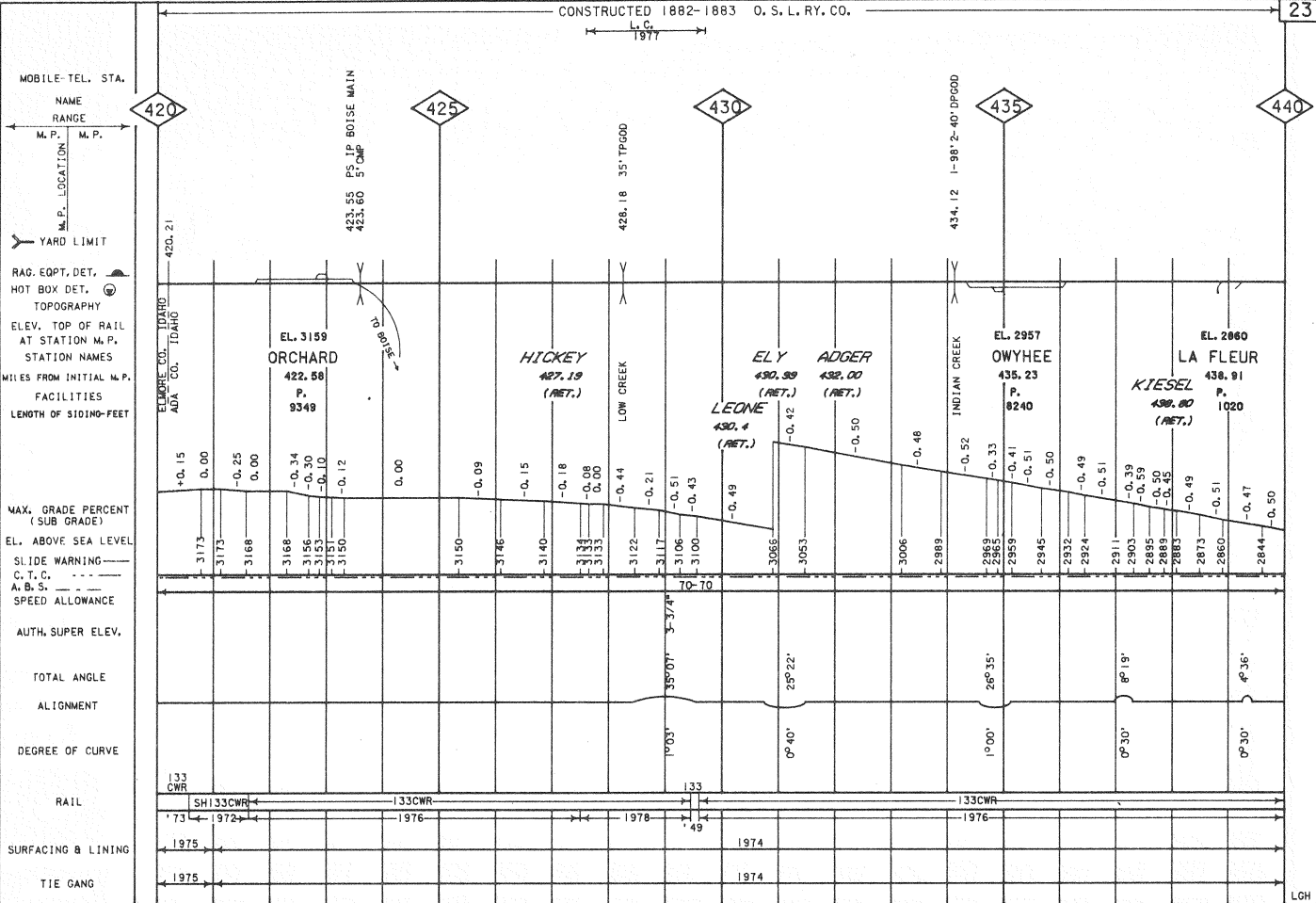
22

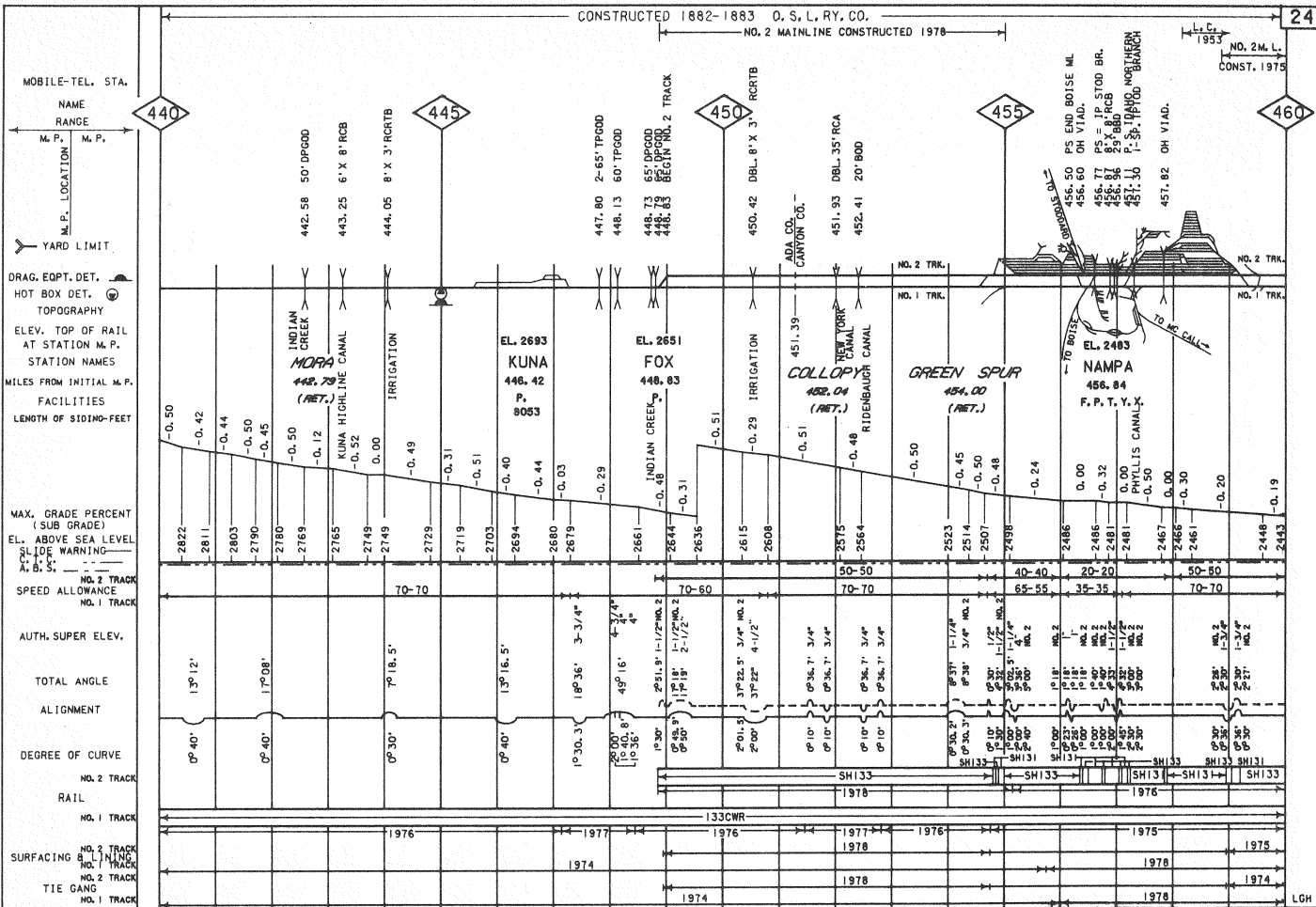


LOH

CONSTRUCTED 1882-1883 O. S. L. RY. CO.

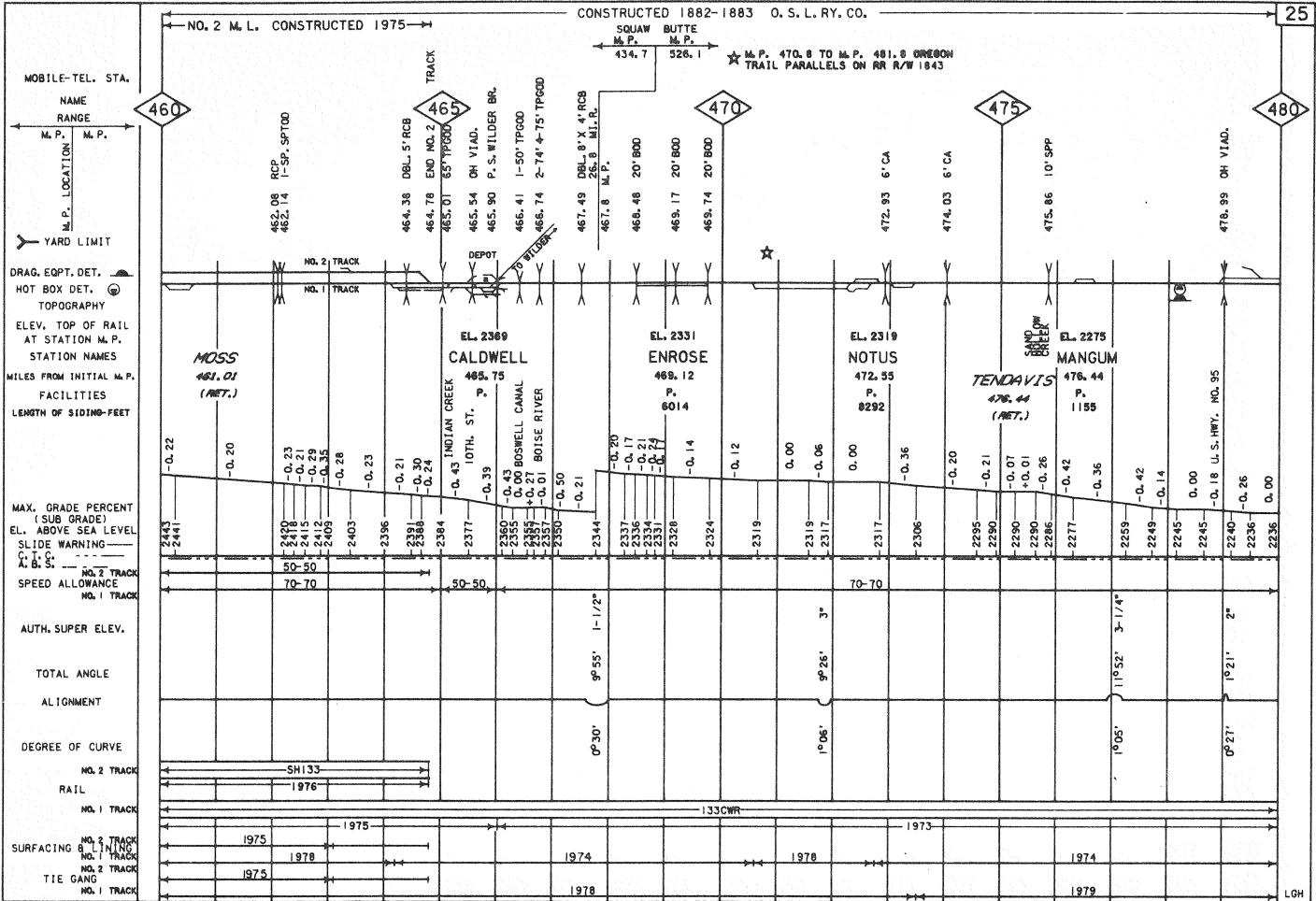
23





RAIL, SURFACING & LITING AND TIE GANG CORRECTED FOR JANUARY 1, 1980

ALIGNMENT & PROFILE CORRECTED FOR JANUARY 1, 1980



RAIL, SURFACING & LITING AND TIE GANG CORRECTED FOR JANUARY 1, 1980.

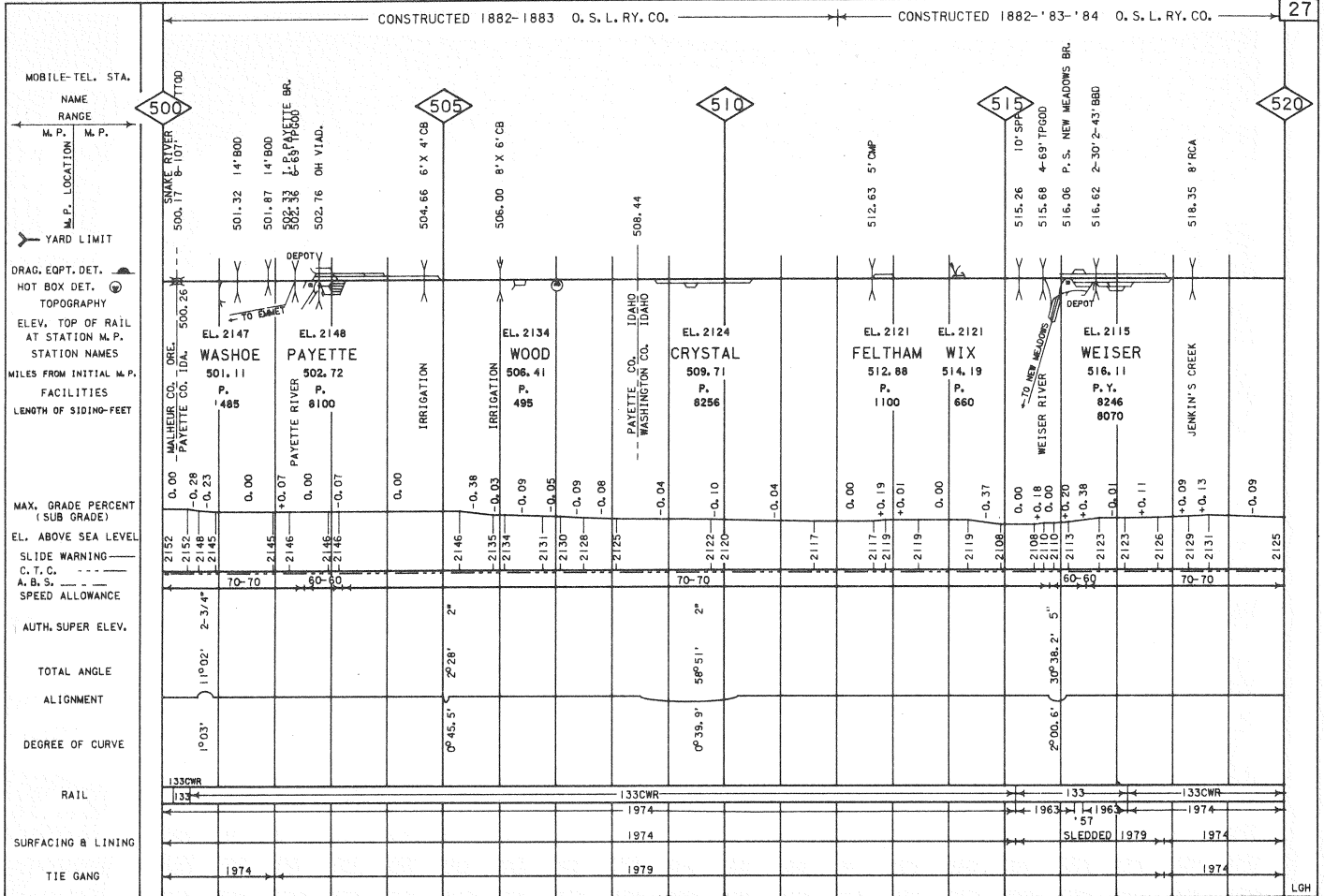
ALIGNMENT & PROFILE CORRECTED FOR JANUARY 1, 1980.

LOH

CONSTRUCTED 1882-1883 O. S. L. RY. CO.

CONSTRUCTED 1882-'83-'84 O. S. L. RY. CO.

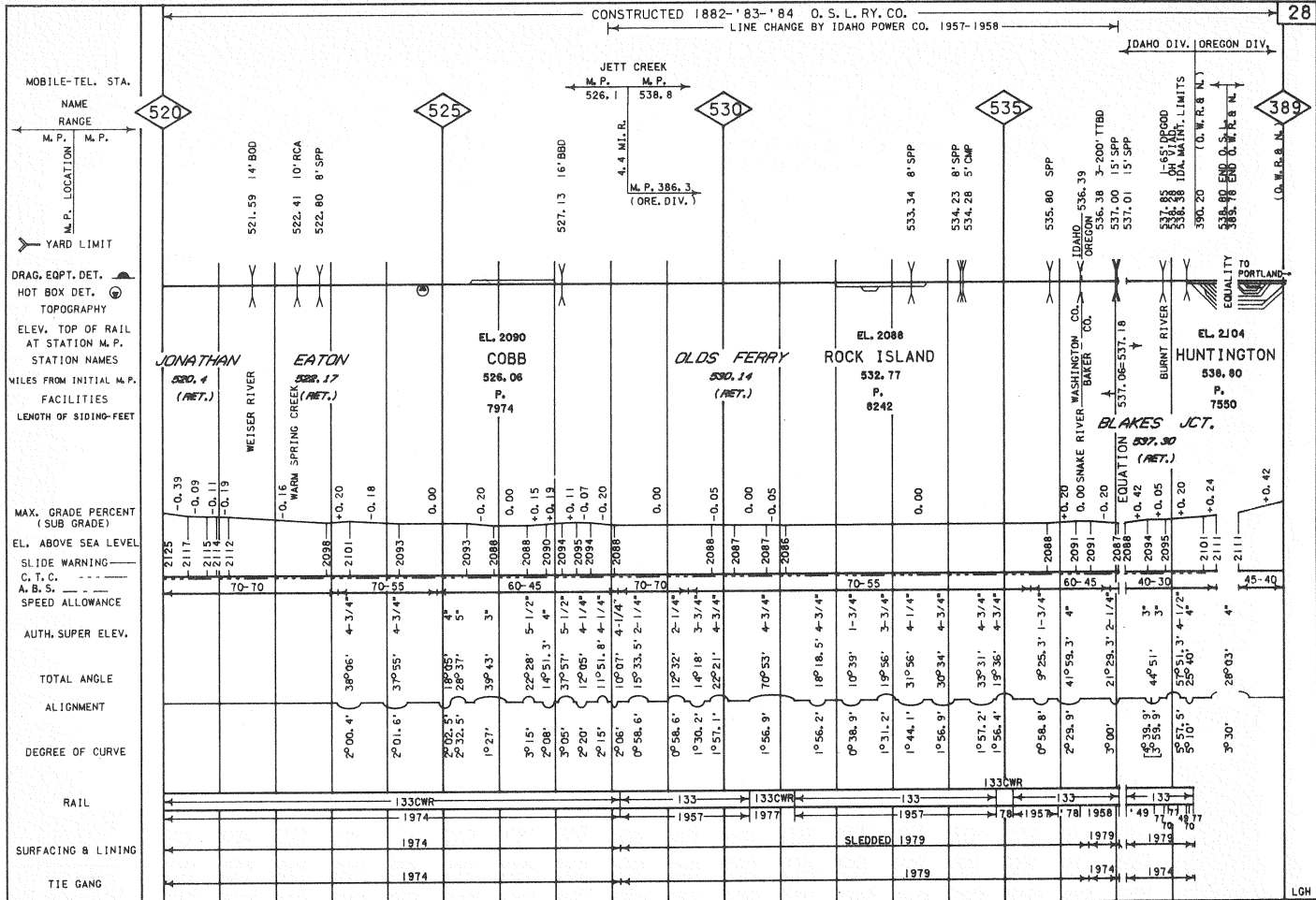
27



RAIL, SURFACING & LINING AND TIE GANG CORRECTED FOR JANUARY 1, 1980

ALIGNMENT & PROFILE CORRECTED FOR JANUARY 1, 1980

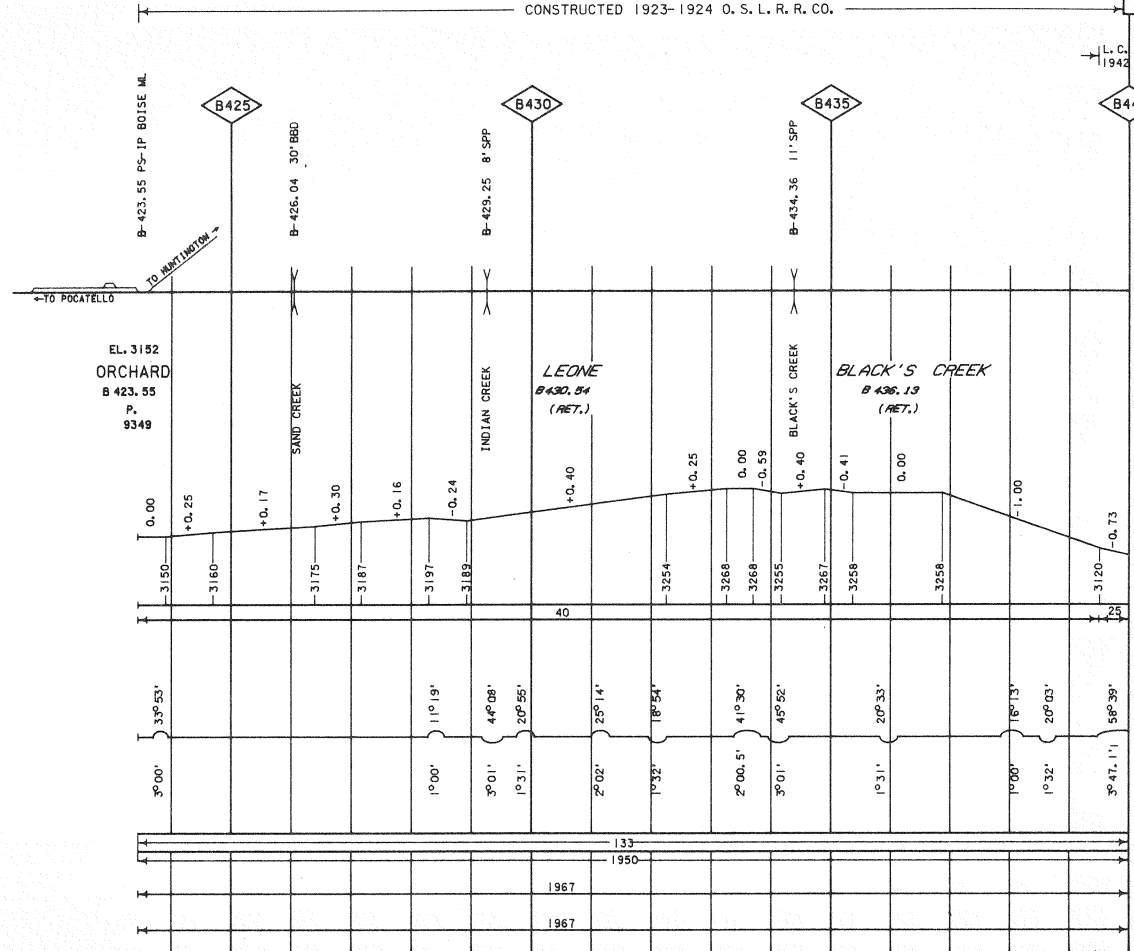
LGH



CONSTRUCTED 1923-1924 O. S. L. R. R. CO.

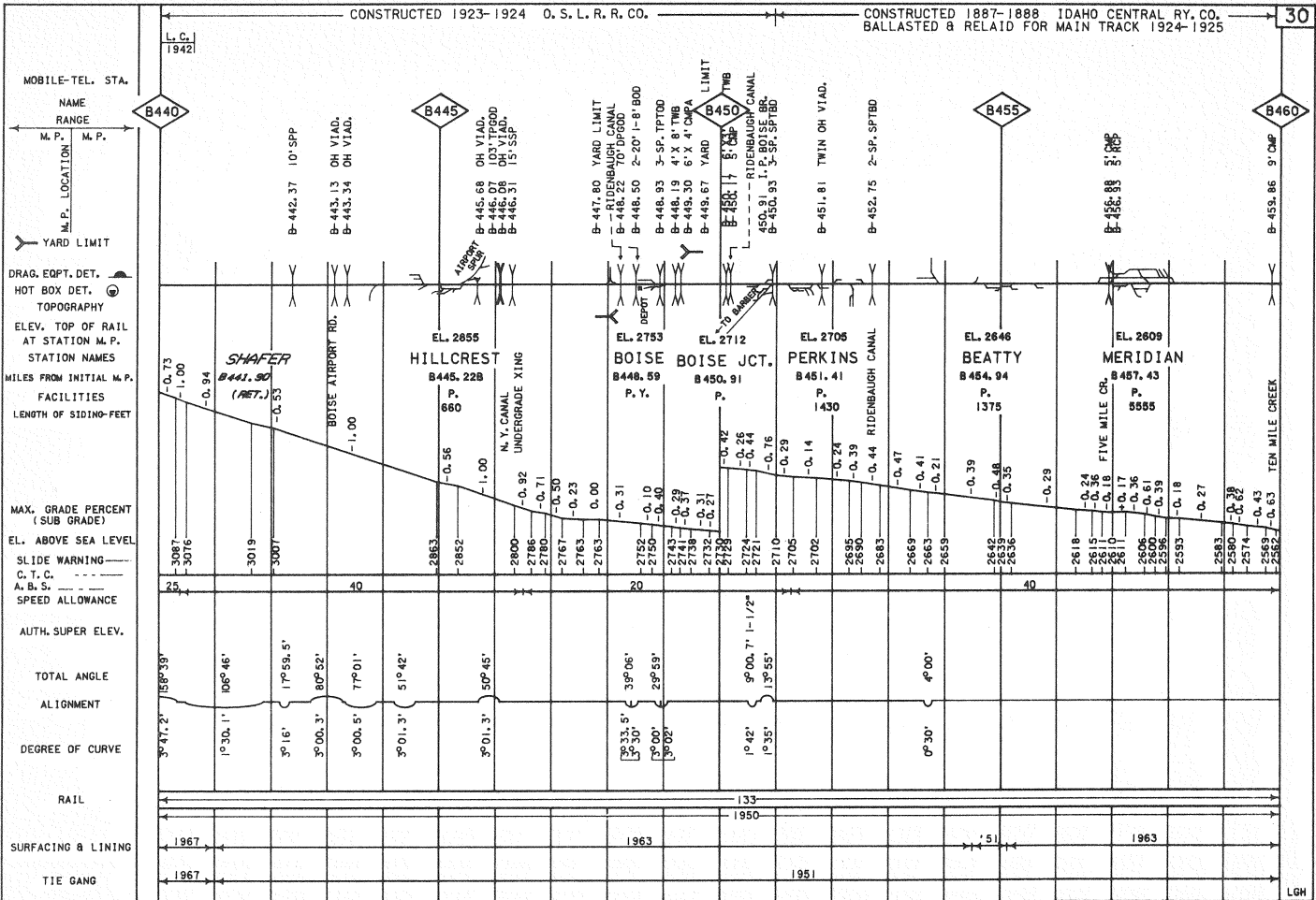
L. C. 1942

MOBILE-TEL. STA.
 NAME RANGE
 M. P. M. P.
 M. P. LOCATION
 YARD LIMIT
 DRAG. EQPT. DET.
 HOT BOX DET.
 TOPOGRAPHY
 ELEV. TOP OF RAIL AT STATION M. P.
 STATION NAMES
 MILES FROM INITIAL M. P.
 FACILITIES
 LENGTH OF SIDING-FEET
 MAX. GRADE PERCENT (SUB GRADE)
 EL. ABOVE SEA LEVEL
 SLIDE WARNING
 C. T. C.
 A. B. S.
 SPEED ALLOWANCE
 AUTH. SUPER ELEV.
 TOTAL ANGLE
 ALIGNMENT
 DEGREE OF CURVE
 RAIL
 SURFACING & LINING
 TIE GANG



CONSTRUCTED 1923-1924 O. S. L. R. R. CO.

CONSTRUCTED 1887-1888 IDAHO CENTRAL RY. CO.
BALLASTED & RELAID FOR MAIN TRACK 1924-1925



RAIL, SURFACING & LINING AND TIE GANG CORRECTED FOR JANUARY 1, 1980

ALIGNMENT & PROFILE CORRECTED FOR JANUARY 1, 1980

