


Coast to Coast



WASHINGTON SUNSET ROUTE



Crescent Limited
Piedmont Limited
Sunset Limited

New York-New Orleans
Express
The Argonaut

Tourist Express




Through Tourist Sleeping Cars Daily
between
Washington
and
Los Angeles, California

Coast to Coast



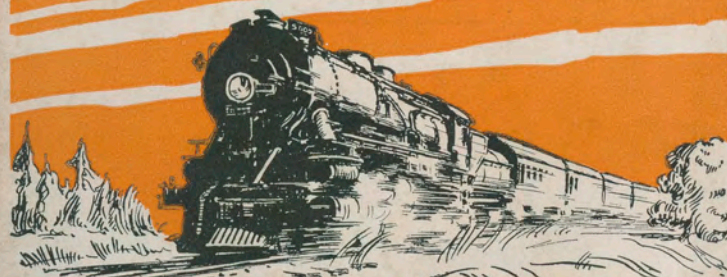
WASHINGTON SUNSET ROUTE



Crescent Limited
Piedmont Limited
Sunset Limited

New York-New Orleans
Express
The Argonaut

Tourist Express



Through Tourist Sleeping Cars Daily
between
Washington
and
Los Angeles, California



ET—Eastern Time
CT—Central Time

SCHEDULES BETWEEN ATLANTIC AND PACIFIC COASTS

MT—Mountain Time
PT—Pacific Time

STANDARD SLEEPING CAR SERVICE

TOURIST SLEEPING CAR SERVICE

WESTBOUND (Read Down)			FOUR NIGHTS TO CALIFORNIA			EASTBOUND (Read Up)		WESTBOUND (Read Down)			EASTBOUND (Read Up)			WESTBOUND (Read Down)			EASTBOUND (Read Up)			
Example	Crescent Limited Daily	Piedmont Limited Daily	Example	Crescent Limited Daily	Example	Example	Trains 101-35-103 Daily	Standard Sleeping Cars, Coaches and Dining Cars.	Trains 104-36-100 Daily	Example	Trains 104-34-108 Daily	Example	Trains 39-33-103 Daily	Example	Trains 104-40 Daily	Example	Trains 104-40 Daily	Example		
Monday	9 00 AM	9 00 AM	Lv Boston (E.T.) (N.Y., N.H. & H.)	Ar 7 20 PM	Saturday	Monday	8 00 PM	Lv Boston (E.T.) (N.Y., N.H. & H.)	Ar 7 20 PM	Saturday	Monday	8 00 PM	Lv Boston (E.T.) (N.Y., N.H. & H.)	Ar 7 20 PM	Saturday	Monday	9 00 AM	Lv Boston (E.T.) (N.Y., N.H. & H.)	Ar 7 20 PM	Saturday
Monday	10 04 AM	10 04 AM	Lv Providence	Ar 6 15 PM	Saturday	Monday	9 08 PM	Lv Providence	Ar 6 15 PM	Saturday	Monday	10 04 AM	Lv Providence	Ar 6 15 PM	Saturday	Monday	10 04 AM	Lv Providence	Ar 6 15 PM	Saturday
Monday	11 40 AM	11 40 AM	Lv New London	Ar 4 43 PM	Saturday	Monday	10 47 PM	Lv New London	Ar 4 43 PM	Saturday	Monday	11 40 AM	Lv New London	Ar 4 43 PM	Saturday	Monday	11 40 AM	Lv New London	Ar 4 43 PM	Saturday
Monday	12 50 PM	12 50 PM	Lv New Haven	Ar 3 32 PM	Saturday	Tuesday	12 06 AM	Lv New Haven	Ar 3 32 PM	Saturday	Tuesday	12 50 PM	Lv New Haven	Ar 3 32 PM	Saturday	Tuesday	12 50 PM	Lv New Haven	Ar 3 32 PM	Saturday
Monday	8 20 PM	8 20 PM	Ar Washington (Penn. R.R.)	Lv 8 15 AM	Saturday	Tuesday	7 50 AM	Ar Washington	Lv 8 15 AM	Saturday	Monday	8 20 PM	Ar Washington	Lv 8 15 AM	Saturday	Monday	8 20 PM	Ar Washington	Lv 8 15 AM	Saturday
Monday	8 40 PM	6 35 PM	Lv New York (E.T.) (Penn. R.R.)	Ar 10 45 AM	Saturday	Tuesday	12 30 AM	Lv New York (E.T.) (Penn. R.R.)	Ar 5 54 AM	Saturday	Monday	4 50 PM	Lv New York (E.T.) (Penn. R.R.)	Ar 1 55 PM	Saturday	Monday	4 50 PM	Lv New York (E.T.) (Penn. R.R.)	Ar 1 55 PM	Saturday
Monday	10 49 PM	8 40 PM	Lv West Philadelphia	Ar 8 43 AM	Saturday	Tuesday	Lv West Philadelphia	Ar 3 30 AM	Saturday	Monday	6 51 PM	Lv West Philadelphia	Ar 11 55 AM	Saturday	Monday	6 51 PM	Lv West Philadelphia	Ar 11 55 AM	Saturday
Monday	11 25 PM	9 18 PM	Lv Wilmington	Ar 8 10 AM	Saturday	Tuesday	Lv Wilmington	Ar 2 53 AM	Saturday	Monday	7 29 PM	Lv Wilmington	Ar 11 20 AM	Saturday	Monday	7 29 PM	Lv Wilmington	Ar 11 20 AM	Saturday
Monday	10 43 PM	Lv Baltimore	Ar 6 35 AM	Saturday	Tuesday	Lv Baltimore	Ar 1 09 AM	Saturday	Monday	8 55 PM	Lv Baltimore	Ar 9 52 AM	Saturday	Monday	8 55 PM	Lv Baltimore	Ar 9 52 AM	Saturday
Monday	11 35 PM	Ar Washington	Lv 5 40 AM	Saturday	Tuesday	6 00 AM	Ar Washington, D. C.	Lv 12 10 AM	Saturday	Monday	9 50 PM	Ar Washington	Lv 9 00 AM	Saturday	Monday	9 50 PM	Ar Washington	Lv 9 00 AM	Saturday
Monday	6 07 PM	6 07 PM	Lv New York (E.T.) (B. & O. R.R.)	Ar 12 42 PM	Saturday	Tuesday	12 01 AM	Lv New York (E.T.) (B. & O. R.R.)	Ar 7 02 AM	Saturday	Monday	4 45 PM	Lv New York (E.T.) (B. & O. R.R.)	Ar 2 18 PM	Saturday	Monday	4 45 PM	Lv New York (E.T.) (B. & O. R.R.)	Ar 2 18 PM	Saturday
Monday	8 24 PM	8 24 PM	Lv Philadelphia	Ar 10 29 AM	Saturday	Tuesday	3 44 AM	Lv Philadelphia	Ar 3 58 AM	Saturday	Monday	6 59 PM	Lv Philadelphia	Ar 12 01 PM	Saturday	Monday	6 59 PM	Lv Philadelphia	Ar 12 01 PM	Saturday
Monday	8 59 PM	8 59 PM	Lv Wilmington	Ar 9 55 AM	Saturday	Tuesday	4 27 AM	Lv Wilmington	Ar 3 16 AM	Saturday	Monday	7 33 PM	Lv Wilmington	Ar 11 24 AM	Saturday	Monday	7 33 PM	Lv Wilmington	Ar 11 24 AM	Saturday
Monday	10 29 PM	10 29 PM	Lv Baltimore	Ar 8 23 AM	Saturday	Tuesday	6 30 AM	Lv Baltimore	Ar 1 20 AM	Saturday	Monday	9 01 PM	Lv Baltimore	Ar 9 45 AM	Saturday	Monday	9 01 PM	Lv Baltimore	Ar 9 45 AM	Saturday
Monday	11 30 PM	11 30 PM	Ar Washington	Lv 7 35 AM	Saturday	Tuesday	7 25 AM	Ar Washington	Lv 12 25 AM	Saturday	Monday	9 50 PM	Ar Washington	Lv 9 00 AM	Saturday	Monday	9 50 PM	Ar Washington	Lv 9 00 AM	Saturday
Monday	11 55 PM	Lv Washington (E.T.) (Southern Ry.)	Ar 5 20 AM	Saturday	Tuesday	11 00 AM	Lv Washington (E.T.) (Sou. Ry.)	Ar 9 00 PM	Friday	Monday	10 25 PM	Lv Washington (E. T.) (Sou. Ry.)	Ar 8 10 AM	Saturday	Monday	10 25 PM	Lv Washington (E. T.) (Sou. Ry.)	Ar 8 10 AM	Saturday
Tuesday	2 10 AM	Lv Washington	Ar 5 20 AM	Saturday	Tuesday	2 18 PM	Lv Charlottesville	Lv 5 57 PM	Friday	Tuesday	1 25 AM	Lv Charlottesville	Lv 4 28 AM	Saturday	Tuesday	1 25 AM	Lv Charlottesville	Lv 4 28 AM	Saturday
Tuesday	5 10 AM	2 55 AM	Lv Charlottesville	Lv 2 21 AM	Saturday	Tuesday	4 12 PM	Lv Lynchburg	Lv 3 50 PM	Friday	Tuesday	3 20 AM	Lv Lynchburg	Lv 2 24 AM	Saturday	Tuesday	3 20 AM	Lv Lynchburg	Lv 2 24 AM	Saturday
Tuesday	6 52 AM	4 40 AM	Lv Lynchburg	Lv 12 40 AM	Saturday	Tuesday	1 30 PM	Lv Richmond	Ar 6 50 PM	Friday	Monday	10 45 PM	Lv Richmond	Ar 7 00 AM	Saturday	Monday	10 45 PM	Lv Richmond	Ar 7 00 AM	Saturday
Monday	10 45 PM	10 45 PM	Lv Richmond	Ar 7 00 AM	Saturday	Tuesday	9 00 AM	Lv Norfolk	Ar 8 25 AM	Saturday	Monday	7 00 PM	Lv Norfolk	Ar 8 25 AM	Saturday	Monday	7 00 PM	Lv Norfolk	Ar 8 25 AM	Saturday
Monday	7 00 PM	7 00 PM	Lv Norfolk	Ar 8 25 AM	Saturday	Tuesday	6 00 PM	Lv Danville	Lv 1 55 PM	Friday	Tuesday	4 50 AM	Lv Danville	Lv 12 35 AM	Saturday	Tuesday	4 50 AM	Lv Danville	Lv 12 35 AM	Saturday
Tuesday	8 20 AM	6 15 AM	Lv Greensboro	Lv 9 50 PM	Friday	Tuesday	7 22 PM	Lv Greensboro	Lv 12 37 PM	Friday	Tuesday	7 30 AM	Lv Greensboro	Lv 11 25 PM	Friday	Tuesday	7 30 AM	Lv Greensboro	Lv 11 25 PM	Friday
Tuesday	9 35 AM	7 30 AM	Lv Salisbury	Lv 8 35 PM	Friday	Tuesday	9 05 PM	Lv Salisbury	Lv 10 45 AM	Friday	Tuesday	10 03 AM	Lv Salisbury	Lv 9 40 PM	Friday	Tuesday	10 03 AM	Lv Salisbury	Lv 9 40 PM	Friday
Tuesday	11 00 AM	9 03 AM	Lv Charlotte	Lv 7 25 PM	Friday	Tuesday	10 30 PM	Lv Charlotte	Lv 9 25 AM	Friday	Tuesday	11 52 AM	Lv Charlotte	Lv 8 25 PM	Friday	Tuesday	11 52 AM	Lv Charlotte	Lv 8 25 PM	Friday
Tuesday	12 01 PM	10 03 AM	Lv Spartanburg (E. T.)	Lv 5 30 PM	Friday	Wednesday	12 45 AM	Lv Spartanburg (E. T.)	Lv 7 05 AM	Friday	Tuesday	4 00 PM	Lv Spartanburg (E. T.)	Lv 6 15 PM	Friday	Tuesday	4 00 PM	Lv Spartanburg (E. T.)	Lv 6 15 PM	Friday
Tuesday	1 50 PM	11 52 AM	Ar Atlanta (C. T.)	Lv 12 00 AM	Friday	Wednesday	5 20 AM	Ar Atlanta (C. T.)	Lv 12 10 AM	Friday	Tuesday	4 20 PM	Ar Atlanta (C. T.)	Lv 7 10 AM	Friday	Tuesday	4 20 PM	Ar Atlanta (C. T.)	Lv 7 10 AM	Friday
Tuesday	5 40 PM	4 00 PM	Lv Atlanta (A. & W. P. R.R.)	Ar 11 40 AM	Friday	Wednesday	5 40 AM	Lv Atlanta (A. & W. P. R.R.)	Ar 11 45 PM	Thursday	Tuesday	9 20 PM	Lv Atlanta (A. & W. P. R.R.)	Ar 2 21 AM	Friday	Tuesday	9 20 PM	Lv Atlanta (A. & W. P. R.R.)	Ar 2 21 AM	Friday
Tuesday	6 05 PM	4 20 PM	Ar Montgomery	Lv 6 45 AM	Friday	Wednesday	10 45 AM	Ar Montgomery	Lv 6 20 PM	Thursday	Tuesday	9 45 PM	Ar Montgomery	Lv 2 06 AM	Friday	Tuesday	9 45 PM	Ar Montgomery	Lv 2 06 AM	Friday
Tuesday	11 05 PM	9 20 PM	Lv Montgomery (L. & N. R.R.)	Ar 6 25 AM	Friday	Wednesday	11 05 AM	Lv Montgomery (L. & N. R.R.)	Ar 6 00 PM	Thursday	Tuesday	3 07 AM	Lv Montgomery (L. & N. R.R.)	Ar 9 04 PM	Thursday	Wednesday	3 07 AM	Lv Montgomery (L. & N. R.R.)	Ar 9 04 PM	Thursday
Tuesday	11 30 PM	9 45 PM	Lv Mobile	Lv 1 15 AM	Friday	Wednesday	4 20 PM	Lv Mobile	Lv 1 02 PM	Thursday	Tuesday	4 32 AM	Lv Mobile	Lv 10 25 AM	Friday	Wednesday	4 32 AM	Lv Mobile	Lv 10 25 AM	Friday
Wednesday	4 32 AM	3 07 AM	Ar New Orleans	Lv 9 00 PM	Thursday	Wednesday	8 30 PM	Ar New Orleans	Lv 9 00 AM	Thursday	Wednesday	8 30 AM	Ar New Orleans	Lv 9 00 PM	Thursday	Wednesday	8 30 AM	Ar New Orleans	Lv 9 00 PM	Thursday
Wednesday	8 30 AM	7 20 AM	Lv New Orleans (Southern Pacific)	Ar 7 35 PM	Thursday	Wednesday	11 00 PM	Lv New Orleans (Sou. Pacific)	Ar 7 50 AM	Thursday	Wednesday	10 25 AM	Lv New Orleans (Sou. Pacific)	Ar 7 50 AM	Thursday	Wednesday	10 25 AM	Lv New Orleans (Sou. Pacific)	Ar 7 50 AM	Thursday
Wednesday	10 40 AM	Lv Houston	Lv 9 25 AM	Thursday	Thursday	10 20 AM	Lv Houston	Lv 9 30 PM	Wednesday	Thursday	10 20 AM	Lv Houston	Lv 9 30 PM	Wednesday	Thursday	10 20 AM	Lv Houston	Lv 9 30 PM	Wednesday
Wednesday	8 45 PM	Lv San Antonio	Lv 3 55 AM	Thursday	Thursday	4 00 PM	Lv San Antonio	Lv 3 35 PM	Wednesday	Thursday	4 00 PM	Lv San Antonio	Lv 3 35 PM	Wednesday	Thursday	4 00 PM	Lv San Antonio	Lv 3 35 PM	Wednesday
Thursday	2 30 AM	Ar El Paso (C. T.)	Lv 11 05 AM	Wednesday	Friday	10 25 AM	Ar El Paso (C. T.)	Lv 9 20 PM	Tuesday	Friday	10 25 AM	Ar El Paso (C. T.)	Lv 9 20 PM	Tuesday	Friday	10 25 AM	Ar El Paso (C. T.)	Lv 9 20 PM	Tuesday
Thursday	7 30 PM	Lv El Paso (M. T.)	Ar 9 45 AM	Wednesday	Lv El Paso (M. T.)	Ar 8 00 PM	Tuesday	Lv El Paso (M. T.)	Ar 8 00 PM	Tuesday	Lv El Paso (M. T.)	Ar 8 00 PM	Tuesday
Thursday	6 45 PM	Lv Deming	Lv 7 39 AM	Wednesday	Lv Deming	Lv 5 30 PM	Tuesday	Lv Deming	Lv 5 30 PM	Tuesday	Lv Deming	Lv 5 30 PM	Tuesday
Thursday	8 59 PM	Lv Bowie	Lv 4 45 AM	Wednesday	Lv Bowie	Lv 2 20 PM	Tuesday	Lv Bowie	Lv 2 20 PM	Tuesday	Lv Bowie	Lv 2 20 PM	Tuesday
Thursday	11 53 PM	Lv Tucson	Lv 1 35 AM	Wednesday	Lv Tucson	Lv 10 25 AM	Tuesday	Lv Tucson	Lv 10 25 AM	Tuesday	Lv Tucson	Lv 10 25 AM	Tuesday
Friday	3 25 AM	Ar Phoenix	Lv 10 10 PM	Tuesday	Ar Phoenix	Lv 10 10 AM	Tuesday	Ar Phoenix	Lv 10 10 AM	Tuesday	Ar Phoenix	Lv 10 10 AM	Tuesday
Friday	6 35 AM	Lv Yuma (M. T.)	Lv 6 00 PM	Tuesday	Lv Yuma (M. T.)	Ar 9 40 AM	Friday	Lv Yuma (M. T.)	Ar 9 40 AM	Friday	Lv Yuma (M. T.)	Ar 9 40 AM	Friday
Friday	10 40 AM	Ar Los Angeles	Lv 4 50 PM	Tuesday	Ar Los Angeles	Lv 3 11 PM	Friday	Ar Los Angeles	Lv 3 11 PM	Friday	Ar Los Angeles	Lv 3 11 PM	Friday
Friday	9 55 AM	Lv Colton	Lv 11 52 AM	Tuesday	Lv Colton	Lv 6 50 PM	Friday	Lv Colton	Lv 6 50 PM	Friday	Lv Colton	Lv 6 50 PM	Friday
Friday	3 06 PM	Ar Los Angeles	Lv 10 00 AM	Tuesday	Ar Los Angeles	Lv 7 05 PM	Friday	Ar Los Angeles	Lv 7 05 PM	Friday	Ar Los Angeles	Lv 7 05 PM	Friday
Friday	5 00 PM	Lv Los Angeles	Ar 8 15 AM	Tuesday	Lv Los Angeles	Lv 9 13 PM	Friday	Lv Los Angeles	Lv 9 13 PM	Friday	Lv Los Angeles	Lv 9 13 PM	Friday
Friday	6 35 PM	Ar Santa Barbara	Lv 5 05 AM	Tuesday	Ar Santa Barbara	Lv 12 20 AM	Saturday	Ar Santa Barbara	Lv 12 20 AM	Saturday	Ar Santa Barbara	Lv 12 20 AM	Saturday
Friday	9 30 PM	Lv San Jose	Lv 7 30 PM	Monday	Lv San Jose	Ar 2 15 AM	Saturday	Lv San Jose	Ar 2 30 AM	Saturday	Lv San Jose	Ar 2 30 AM	Saturday
Saturday	7 00 AM	Ar San Francisco	Lv 6 15 PM	Monday	Ar San Francisco	Lv 2 50 AM	Saturday	Ar San Francisco	Lv 2 50 AM	Saturday	Ar San Francisco	Lv 2 50 AM	Saturday
Saturday	8 15 AM	Lv San Francisco	Lv 10 30 AM	Saturday	Lv San Francisco	Ar 1 35 AM	Saturday	Lv San Francisco	Ar 1 15 AM	Saturday	Lv San Francisco	Ar 1 15 AM	Saturday
Saturday	Ar Los Angeles	Lv 7 05 AM	Monday	Ar Los Angeles	Lv 7 05 AM	Monday	Ar Los Angeles	Lv 8 07 PM	Monday	Ar Los Angeles	Lv 8 07 PM	Monday
Saturday	Lv Los Angeles	Lv 9 15 AM	Monday	Lv Los Angeles	Lv 9 15 AM	Monday	Lv Los Angeles	Lv 6 15 PM	Monday	Lv Los Angeles	Lv 6 15 PM	Monday

PIEDMONT LIMITED—Standard Sleeping Cars, Coaches and Dining Cars—NO EXTRA FARE
 CRESCENT LIMITED—Standard Sleeping, Club, Observation and Dining Cars—EXTRA FARE
 SUNSET LIMITED—Standard Sleeping, Club, Observation and Dining Cars—NO EXTRA FARE

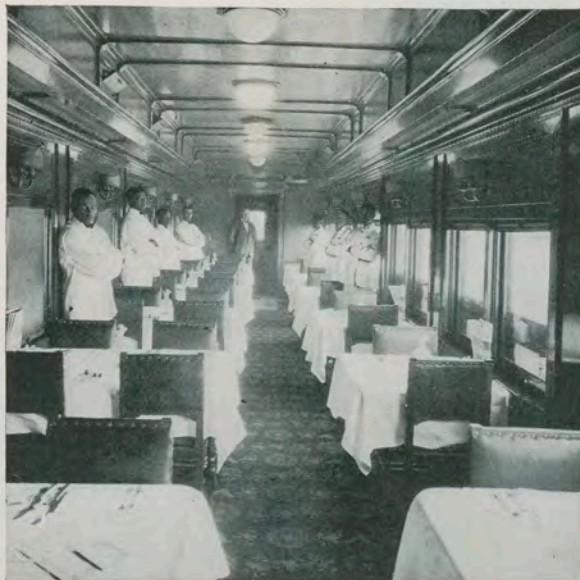
**MOST ECONOMICAL ROUTE TO CALIFORNIA
 SAVE 50% ON PULLMAN FARE**

For rates, tickets or reservations, apply to any representative named below, or any agent of the Southern Ry., West Point Route, Louisville & Nashville R.R., or Southern Pacific Lines

- BOSTON:** E. S. LEAVITT, General Agent, Southern Pacific Lines
 209 Old So. Bldg., 294 Washington Street
- NEW YORK:** CLAUDE T. HUNT, N. E. P. A., Southern Railway
 GEO. C. DANIELS, S. P. A., 246 Washington Street
 R. H. DeBUTTS, G. E. P. A., Southern Railway
 612 The Knickerbocker, 152 West 42d Street
 L. A. BINKLEY, G. E. P. A., L. & N. R.R.
 609 The Knickerbocker, 152 West 42d Street
 H. H. GRAY, G. E. P. A., Southern Pacific Lines
 E. BARLING, C. P. & T. A.
 Fifth Ave., at 44th Street
- PHILADELPHIA:** G. L. HERRICK, T. A.
 165 Broadway
 F. T. BROOKS, General Agent, Southern Pacific Lines
 706 Packard Bldg.
- BALTIMORE:** C. F. BIGELOW, D. P. A., Southern Railway
 1410 Real Estate Trust Bldg., Broad and Chestnut Sts.
 W. M. McCULLOUGH, D. P. A., Southern Railway
 4 St. Paul Street
- WASHINGTON:** W. B. JOHNSON, General Agent, Southern Pacific Lines
 209 Morris Bldg., Charles and Saratoga Streets
 A. J. POSTON, General Agent, Southern Pacific Lines
 T. G. SPENCE, P. A.
 400 Southern Bldg., H Street at 15th N. W.
 S. E. BURGESS, D. P. A., Southern Railway
 R. O. WHITESELL, T. P. A., Southern Railway
- RICHMOND:** F. H. POSTON, D. P. A., Southern Railway
 809 East Main Street
- NORFOLK:** J. W. CALVERT, T. P. A., Southern Railway
 141 Granby Street
- ATLANTA:** J. P. BILLUPS, G. P. A., A. & W. P. R.R.
 4 Hunter Street, S. E

WASHINGTON-SUNSET
ROUTE
COAST TO COAST

STANDARD CAR SERVICE



CRESCENT LIMITED AND SUNSET LIMITED

WASHINGTON-SUNSET
ROUTE
COAST TO COAST

STANDARD CAR SERVICE



CRESCENT LIMITED AND SUNSET LIMITED

FIRST-CLASS SERVICE

on the Washington-Sunset Route is best illustrated by its two leading trains Nos. 37 and 38, the CRESCENT LIMITED (operating over Southern Railway, West Point Route and Louisville & Nashville Railroad) and Southern Pacific Nos. 101 and 102, SUNSET LIMITED. The CRESCENT LIMITED is an all-steel train consisting of luxurious Pullman cars of latest design, including Club Car with bath, buffet, and valet service; Observation Car with ladies' lounge, bath and maid, manicure, magazines and stationery. Extra Fare to New Orleans: from New York, \$5.00; from Washington, \$4.00. The SUNSET LIMITED is an all-steel train carrying Pullman Standard, Drawing Room, Compartment Cars, Observation Car containing Ladies' Lounge with bath, maid, manicure and hairdresser, Club Car with bath, barber and valet service. The Dining Cars are supplied from the best markets of the world and the menu is sufficiently varied to tempt the most fastidious appetite. Other standard car service without extra fare.

FOUR NIGHTS TRAVEL BETWEEN NEW YORK AND CALIFORNIA

represents an accomplishment in travel in keeping with this progressive age when the best is none too good for the traveling public. America has set the pace in railroad development and the lines composing the Washington-Sunset Route encompass America with their splendid service from Coast to Coast. The Southern Pacific Lines, the Southern Railway, and the Louisville & Nashville Railroad have literature descriptive of the country contiguous to the Washington-Sunset Route, and their respective lines, which they will supply free to those who are interested.

WASHINGTON-SUNSET
ROUTE
COAST TO COAST



W. E. JOHNSTON
Passenger Agent at New Orleans, meets the Washington-Sunset Tourist car daily.

DAILY TOURIST SLEEPING CAR SERVICE

THRU TOURIST SLEEPING CAR BETWEEN WASHINGTON, D. C., AND LOS ANGELES, MAKING CONVENIENT CONNECTION FOR ALL POINTS BETWEEN LOS ANGELES, SAN FRANCISCO AND OREGON.

This popular line affords passengers who do not care to make the long trans-continental journey between the East and the Pacific Coast in a railroad day coach, an opportunity to secure for a very nominal sum clean and comfortable sleeping accommodation WITHOUT THE USUALLY VERY BOTHERSOME CHANGE OF CARS. These comfortable Pullman tourist sleeping cars are equipped with LARGE SMOKING AND DRESSING ROOM for men, LARGE DRESSING ROOM for ladies, SANITARY LEATHER-UPHOLSTERED SEATS, and are LIGHTED BY ELECTRICITY.

TOURIST SLEEPING CAR FARES SHOWN ON PAGES 17 AND 18 ARE APPROXIMATELY 50% CHEAPER THAN REGULAR STANDARD PULLMAN FARES

REDUCED ROUND-TRIP FARES TO CALIFORNIA
NOW IN EFFECT

These round trip fares to the Pacific Coast permit of your GOING via the WASHINGTON-SUNSET ROUTE thru Atlanta, Montgomery and New Orleans and RETURNING via the same or via any direct route thru Chicago, St. Louis, Memphis or New Orleans.

Stop-Overs Permitted at all Points Enroute Going and Returning

Through Storyland to Sunset Seas

No travelogue could be more replete with interest than the Country traversed by the Washington-Sunset Route, between the National Capital and San Francisco. At Washington the Capitol, the White House, Washington Monument, Smithsonian, National Museum, Arlington, Mt. Vernon, etc., all abound in interest, but in the Library of Congress, popularly known as the Congressional Library, there is an intellectual feast. The Library building has been acclaimed by world travelers as the best equipped in the world. Ten days' stopover privilege at Washington enables Washington-Sunset Route passengers to enjoy these features without additional travel expense.

Passing through Virginia, the Old Dominion, one is reminded that she is the "Mother of Presidents" and that upon her soil was made much of the history of the early days of our Republic. This is true also of North and South Carolina, the Piedmont section, through which the Washington-Sunset Route lies, whose vistas are worthy of their reputation for scenic beauty. And, too, in these States and Georgia, the wonder lies in the tremendous commercial advance as evidenced by the great number of manufacturing industries. Alabama and Mississippi are distinctive in

WASHINGTON-SUNSET
ROUTE
COAST TO COAST

DAILY TOURIST SLEEPING CAR SERVICE

THRU TOURIST SLEEPING CAR BETWEEN WASHINGTON, D. C., AND LOS ANGELES, MAKING CONVENIENT CONNECTION FOR ALL POINTS BETWEEN LOS ANGELES, SAN FRANCISCO AND OREGON.

This popular line affords passengers who do not care to make the long trans-continental journey between the East and the Pacific Coast in a railroad day coach, an opportunity to secure for a very nominal sum clean and comfortable sleeping accommodation WITHOUT THE USUALLY VERY BOTHERSOME CHANGE OF CARS. These comfortable Pullman tourist sleeping cars are equipped with LARGE SMOKING AND DRESSING ROOM for men, LARGE DRESSING ROOM for ladies, SANITARY LEATHER-UPHOLSTERED SEATS, and are LIGHTED BY ELECTRICITY.

TOURIST SLEEPING CAR FARES SHOWN ON PAGES 17 AND 18 ARE APPROXIMATELY 50% CHEAPER THAN REGULAR STANDARD PULLMAN FARES

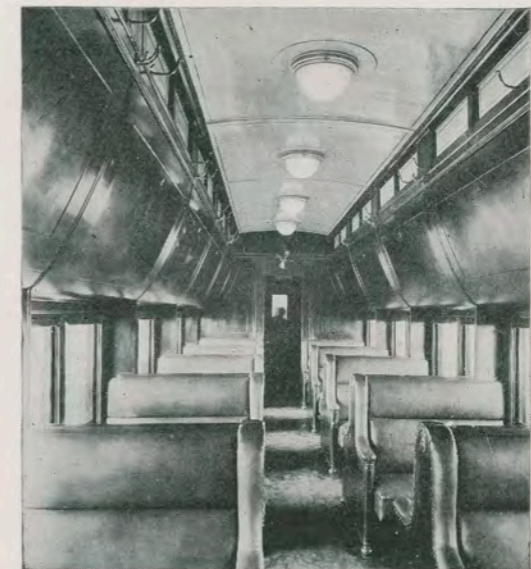
REDUCED ROUND-TRIP FARES TO CALIFORNIA
NOW IN EFFECT

These round trip fares to the Pacific Coast permit of your GOING via the WASHINGTON-SUNSET ROUTE thru Atlanta, Montgomery and New Orleans and RETURNING via the same or via any direct route thru Chicago, St. Louis, Memphis or New Orleans.

Stop-Overs Permitted at all Points Enroute Going and Returning

WASHINGTON-SUNSET
ROUTE
COAST TO COAST

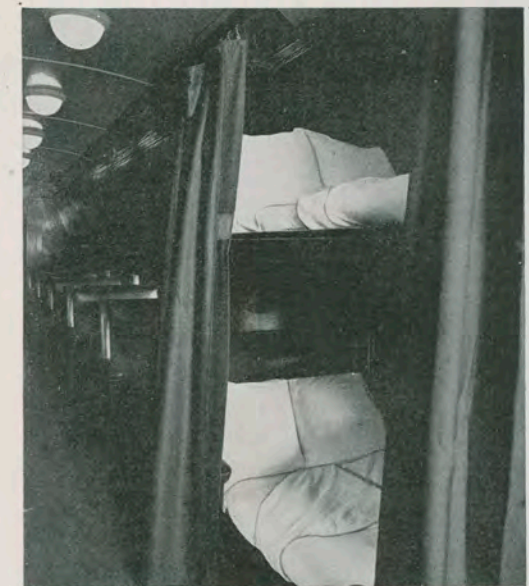
TOURIST CAR SERVICE



INTERIOR VIEW, TOURIST SLEEPING CAR—DAY

WASHINGTON-SUNSET
ROUTE
COAST TO COAST

TOURIST CAR SERVICE



SECTION TOURIST SLEEPING CAR—NIGHT

DAILY THROUGH TOURIST SLEEPING CAR BETWEEN
WASHINGTON AND CALIFORNIA

Lower Berth, \$16.50; Upper, \$13.20; Section, \$29.70

While Enjoying the Practice of Economy there is no Lessening of Comfort

BERTHS IN STANDARD CARS ARE ABOUT DOUBLE THESE AMOUNTS

TWO MAY OCCUPY BERTH WITHOUT ADDITIONAL CHARGE

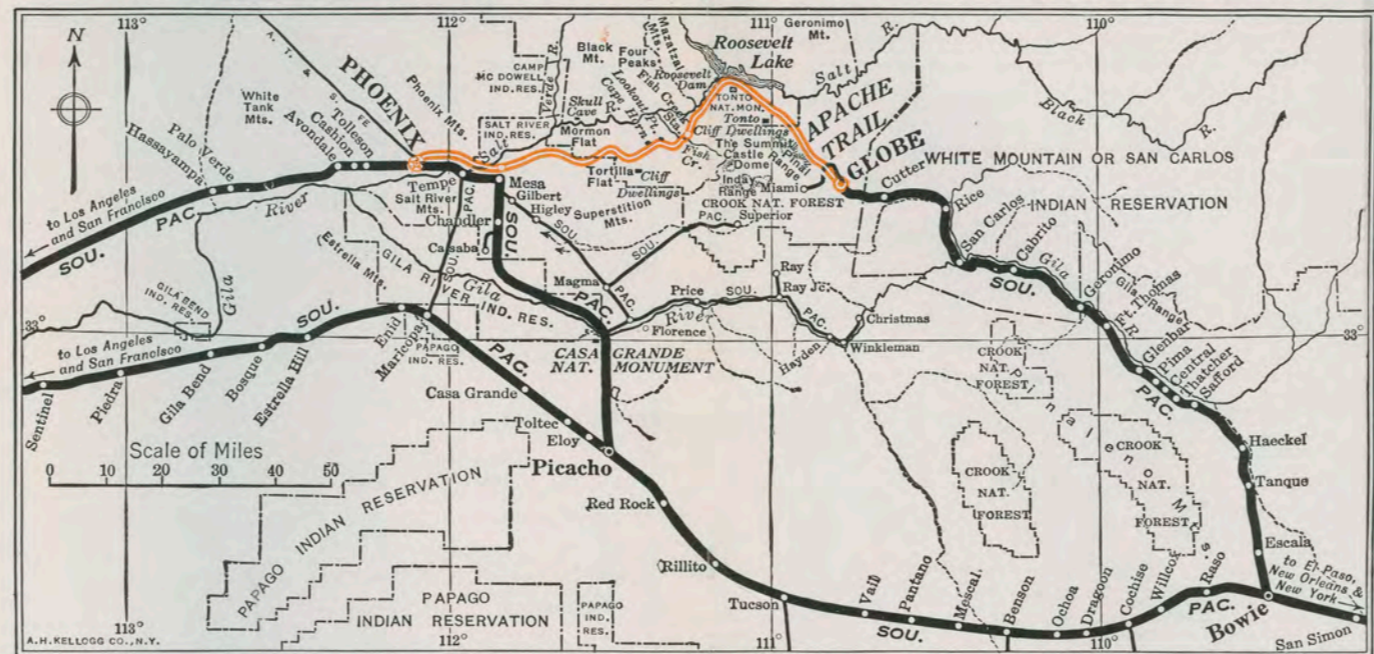
	BERTH FARES		Los Angeles.	Colton.	Indio.	Yuma.	Phoenix.	Chandler.	Tucson.	Benson.	Willcox.	Lordsburg.	Deming.	El Paso.	Marfa.	Sanderson.	Lantry.	Spofford.	San Antonio.	Houston.	Beaumont.	Lake Charles.	Lafayette.	Morgan City.	New Orleans.	Mobile.	Montgomery.	Opelika.	Atlanta.	
	LOWER	UPPER 20% less																												
Washington.	12	10	15	12	10	10	10	10	10	10	10	10	10	10	10	10	10	10	10	10	10	10	10	10	10	10	10	10	10	10
Lynchburg.	12	10	15	12	10	10	10	10	10	10	10	10	10	10	10	10	10	10	10	10	10	10	10	10	10	10	10	10	10	10
Danville.	12	10	15	12	10	10	10	10	10	10	10	10	10	10	10	10	10	10	10	10	10	10	10	10	10	10	10	10	10	10
Greensboro.	12	10	15	12	10	10	10	10	10	10	10	10	10	10	10	10	10	10	10	10	10	10	10	10	10	10	10	10	10	10
Charlotte.	12	10	15	12	10	10	10	10	10	10	10	10	10	10	10	10	10	10	10	10	10	10	10	10	10	10	10	10	10	10
Spartanburg.	12	10	15	12	10	10	10	10	10	10	10	10	10	10	10	10	10	10	10	10	10	10	10	10	10	10	10	10	10	10
Tococa.	12	10	15	12	10	10	10	10	10	10	10	10	10	10	10	10	10	10	10	10	10	10	10	10	10	10	10	10	10	10
Atlanta.	12	10	15	12	10	10	10	10	10	10	10	10	10	10	10	10	10	10	10	10	10	10	10	10	10	10	10	10	10	10
Opelika.	12	10	15	12	10	10	10	10	10	10	10	10	10	10	10	10	10	10	10	10	10	10	10	10	10	10	10	10	10	10
Montgomery.	12	10	15	12	10	10	10	10	10	10	10	10	10	10	10	10	10	10	10	10	10	10	10	10	10	10	10	10	10	10
Mobile.	12	10	15	12	10	10	10	10	10	10	10	10	10	10	10	10	10	10	10	10	10	10	10	10	10	10	10	10	10	10
New Orleans.	12	10	15	12	10	10	10	10	10	10	10	10	10	10	10	10	10	10	10	10	10	10	10	10	10	10	10	10	10	10



SCENES AT THE NATION'S CAPITAL



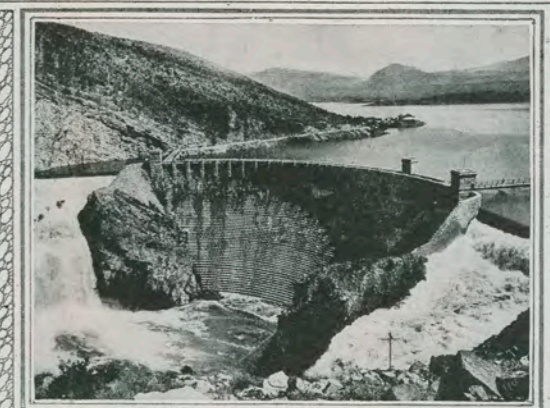
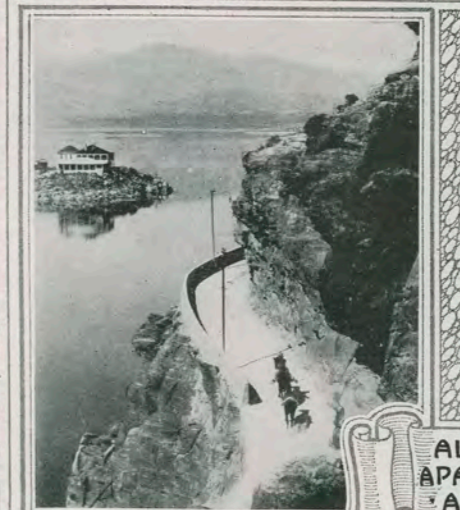
The Apache Trail All-Motor Mountain Trip—Globe to Phoenix via Roosevelt Dam



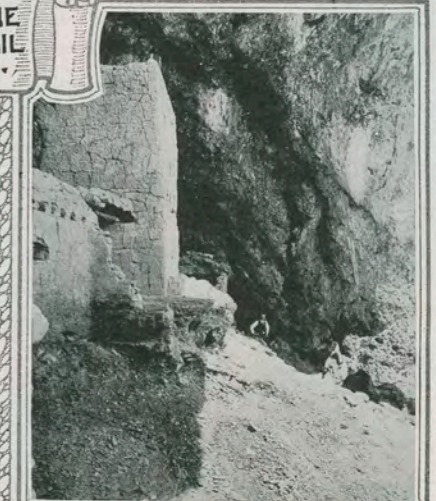
THE APACHE TRAIL, an All-Motor Mountain trip, leading for 120 miles between the modern mining town of Globe and Phoenix, the capital of Arizona, affords to transcontinental tourists through El Paso, the most thrilling automobile trip in America. It is a novel experience, with close-up views of a land rich in its rugged grandeur.

The trail follows an ancient thoroughfare—the oldest in our country. It was first the trail of prehistoric cliff-dwellers. Centuries later—in 1540—over the same trail rode the armored band of the Spanish explorer Coronado. Then followed somber-robed friars, American pioneers, miners, scouts and blue-clad cavalymen. For here was the war path along which the fierce Apaches set out on their dreaded forays, led by battle chiefs whose very names inspired terror—Cochise, Mangus, Colorado and Geronimo.

Through the recesses of this once remote region you may today drive in powerful and comfortable motor coaches of the latest type over the Apache Trail. Convenient service is maintained for passengers traveling over the "Sunset Route" between New Orleans and California. This Apache Trail All-Motor Mountain Trip may be included in your itinerary at additional cost of \$10.00.



ALONG THE APACHE TRAIL ARIZONA



VIEW ON SOUTHERN RAILWAY



BILOXI LIGHT, BILOXI. MISS.



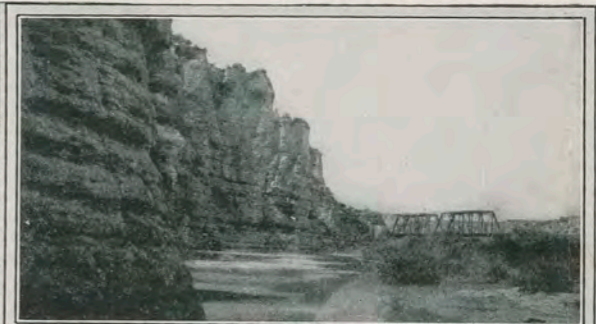
IN THE EVANGELINE COUNTRY



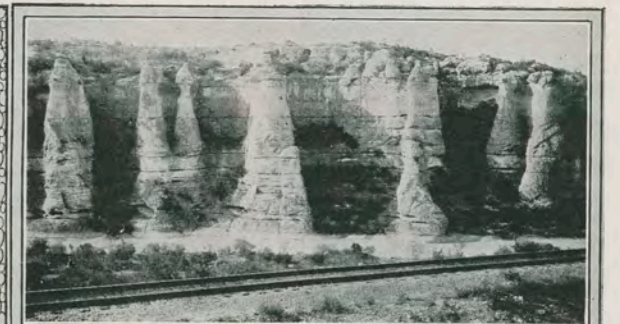
SAN JACINTO BATTLEFIELD NEAR HOUSTON, TEXAS



FORT SAM HOUSTON, SAN ANTONIO



DEVIL'S RIVER CANYON



CASTLE CANYON, TEXAS