

SUMMER SCHEDULE

EFFECTIVE JUNE 4, 1928

SANDY RIVER AND RANGELEY LAKES RAILROAD

PASSENGER SERVICE

Local and Through Time Tables from all Stations on the
Sandy River and Rangeley Lakes Railroad to Farming-
ton, Maine, Portland, Boston and New York.



Photo by Irving Kimball Boston

ONE OF THE FAMOUS TROUT POOLS ON THE CARRABASSET

JOSIAH S. MAXCY, HERBERT S. WING, RECEIVERS.
ORRIS M. VOSE, SUPERINTENDENT.
ARTHUR H. ROBINSON, TRAFFIC MANAGER & AUDITOR.
PHILLIPS, MAINE

SANDY RIVER AND RANGELEY LAKES RAILROAD

FARMINGTON AND RANGELEY

READ DOWN			READ UP		
†3	†5		†4		
Mixed	R	STATIONS	R		
A. M.	A. M.		P. M.		
1 20	8 25	Lv Boston, via Dover	9 05		
6 40	11 15	" Portland	5 25		
11 08	3 30	Ar Farmington	1 50		
11 40	†3 40	Lv Farmington	1 35		
	f3 46	" Fairbanks	f1 24		
	f4 01	" Maplewood	f1 13		
	f4 03	" South Strong	f1 11		
12 30	4 10	Ar Strong	1 05		
1 05	4 10	Lv Strong			
	f4 20	" Avon	12 50		
1 35	4 35	Ar Phillips	12 40		
	4 35	Lv Phillips	12 40		
		" Madrid			
		" Reeds			
		" Sanders			
		" Perham Jct.			
	5 25	" Redington	11 40		
		" Eustis Jct.			
		" Dallas			
		" Dead River			
	†6 05	Ar Rangeley	†11 05		
P. M.	P. M.		A. M.		

FARMINGTON AND CARRABASSET

READ DOWN			READ UP		
†15	†3-†17	†19	†18	†20	
R	Mixed	R	R	Mixed	
A. M.	A. M.	A. M.	P. M.	P. M.	
1 20	8 25		9 05		
6 40	11 15		5 25		
11 08	3 30		1 50		
†11 40	†3 45		†1 25		
	4 15		12 55		
1 05	4 20		12 50		
	f4 40		f12 25		
1 40	4 45		12 20		
	f4 50		f12 15		
2 05	†5 05		12 00		
†10 10	2 15		11 55	†4 05	
†10 40	†2 50		†11 25	†3 30	
A. M.	P. M.	P. M.	A. M.	P. M.	

REFERENCES.

† Daily, except Sundays. f Stops on signal or on notice to Conductor.
 d Stage connections to and from Stratton, Eustis, Ledge House, Parson's Farm and Flagstaff. R Rail Motor Car.

The time 12.01 Midnight to 12.00 Noon is shown in light face type.
 12.01 Noon to 12.00 Midnight in dark face type.
 Trains are run on Eastern Standard Time.

ROUND TRIP TICKETS AT REDUCED RATES

BETWEEN ALL LOCAL STATIONS—GOOD FOR 30 DAYS

MAINE CENTRAL RAILROAD

Service Farmington and Portland.—Trains leave Farmington week days at 6.50 a. m. and 1.50 p. m.; Sundays at 2.20 p. m.

Arrive Farmington week days at 11.08 a. m. and 3.30 p. m.; Sundays at 10.55 a. m.

STATE OF MAINE EXPRESS

Service between Portland, Maine, and New York.—Trains leave Portland Union Station, daily, at 8.00 p. m., arrive New York, Grand Central Terminal, 6.26 a. m. Returning, leave New York 7.00 p. m., arrive in Portland 5.45 a. m., via New Haven, New London and Worcester.

EXPRESS SERVICE

VIA

Sandy River and Rangeley Lakes Railroad

From all stations along this railroad, shipments by express may be sent over the shortest and most direct route to any of the 26,700 points in the United States and Canada, served by the

AMERICAN RAILWAY EXPRESS

Shipments are accepted either prepaid or with charges collect and C. O. D. remittances promptly returned.

For details of rates, call or telephone the American Railway Express Agent nearest you.

EXPRESS SERVICE

VIA

Sandy River and Rangeley Lakes Railroad

One of the most inviting regions in the great State of Maine is the territory of Franklin County served by the Sandy River and Rangeley Lakes Railroad. Because of its natural allurements, its unparalleled scenery, its abundant fishing and hunting grounds, and its excellent hotel accommodations, this section has long been popular as a playground for the sportsman or tourist.

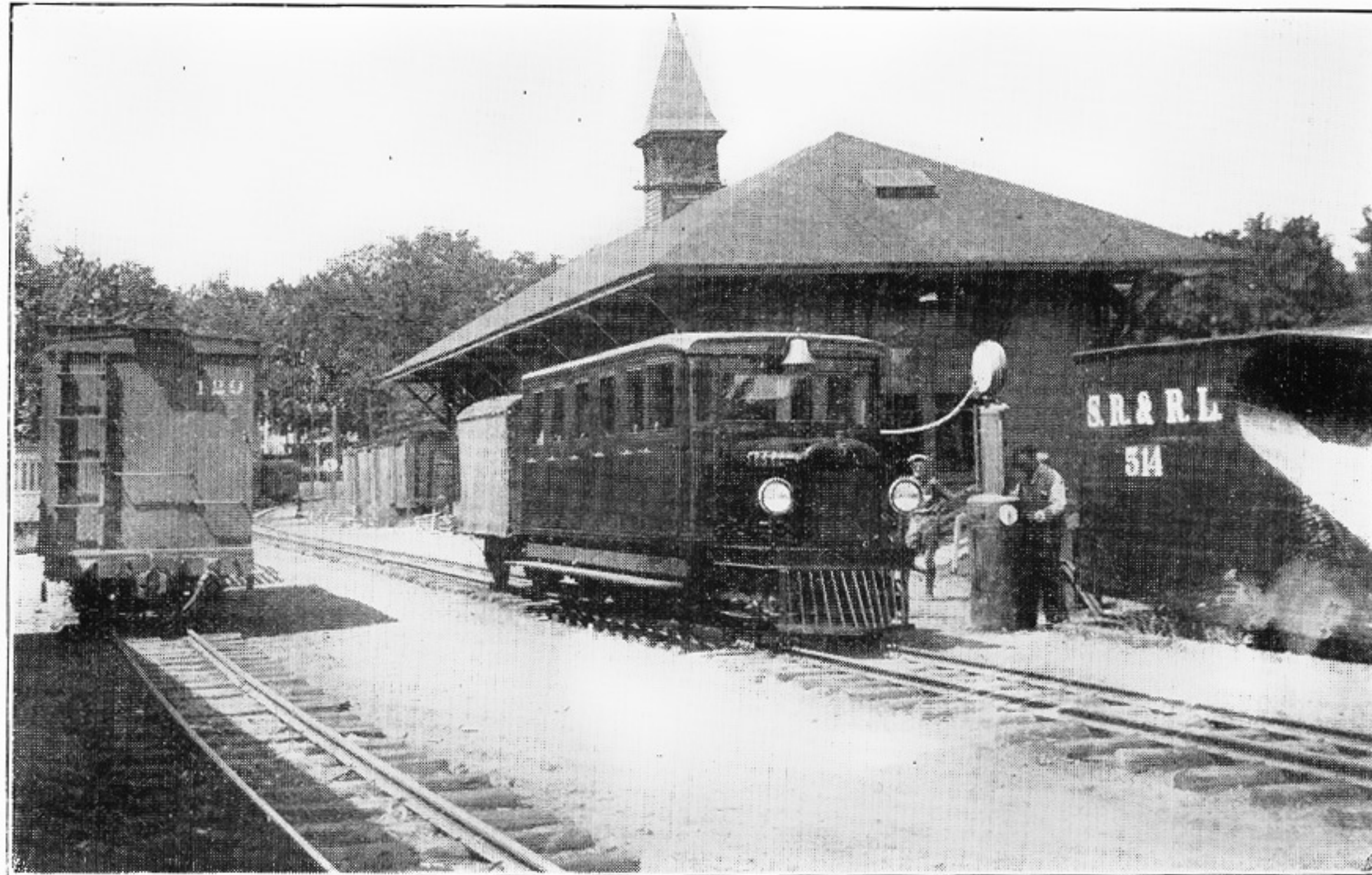
The Sandy River and Rangeley Lakes Railroad assures dependable passenger service. Special attention is directed to its improved service made possible by the installation of Rail Motor cars. To many the opportunity of riding in narrow gauge trains is in itself a novelty, but a ride in a gasoline rail motor car specially designed for a 2-foot gauge railroad is an unusual and attractive mode of travel. This innovation provides the passenger with all the exhilaration and pleasure of an automobile trip coupled with the comforts and safety of rail travel, at the same time affording the enjoyment of scenery more wild and picturesque than any seen along the highway by the automobile tourist.

Exceptional opportunities are here offered for the location of manufacturing plants using forest products. Many prosperous industries are now located along the line of this railroad. New industries have recently been established and negotiations are in progress for the location of others. The entire section is heavily wooded, its supply of hard wood especially being practically inexhaustible. Further development of these enormous resources spells increasing prosperity for the railroad and the territory which it serves.

In addition to its very considerable tonnage of manufactured products, sawed lumber, logs, and telephone poles, there are annually transported over the line of the Sandy River and Rangeley Lakes Railroad many thousands of cords of pulpwood, fuel wood and hard wood bolts. Reliable service is assured.

Detailed information will be promptly furnished upon request to

ARTHUR H. ROBINSON,
Traffic Manager and Auditor,
Phillips, Maine.



NEW RAIL MOTOR CAR
TAKING GAS AT PHILLIPS STATION