

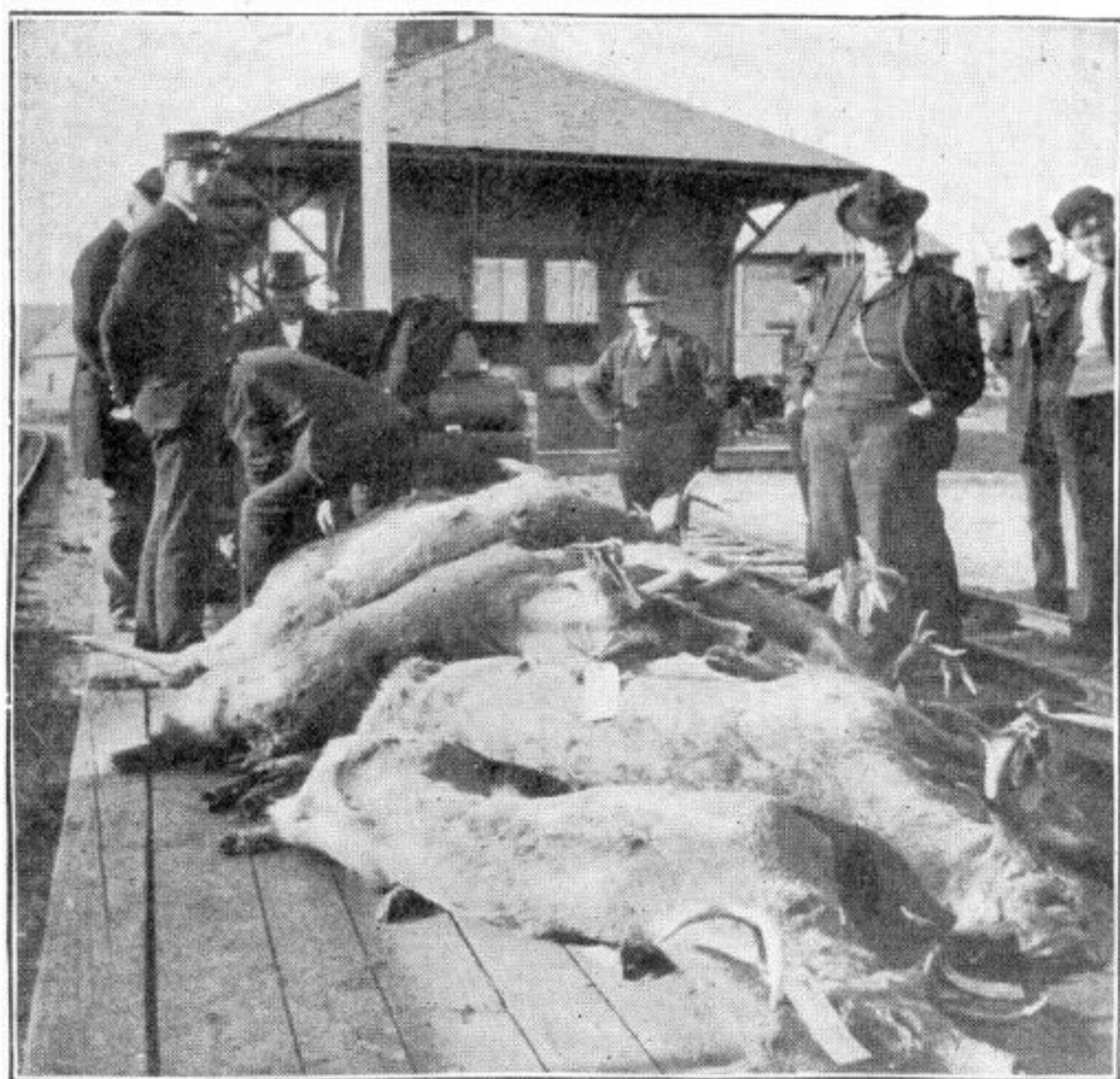
# FALL SCHEDULE

EFFECTIVE SEPTEMBER 26, 1927

## SANDY RIVER AND RANGELEY LAKES RAILROAD

### IMPROVED PASSENGER SERVICE

Local and Through Time Tables from all Stations on the Sandy River and Rangeley Lakes Railroad to Farmington, Maine, Portland, Boston and New York.



Shipment of Game from Franklin County's Hunting Grounds

JOSIAH S. MAXCY, HERBERT S. WING, RECEIVERS.

ORRIS M. VOSE, SUPERINTENDENT.

ARTHUR H. ROBINSON, TRAFFIC MANAGER & AUDITOR.

PHILLIPS, MAINE



# SANDY RIVER AND RANGELEY LAKES RAILROAD

## FARMINGTON AND RANGELEY

READ DOWN			READ UP		
†3	†5		†4		
Mixed	R	STATIONS	R		
A. M.	A. M.		P. M.		
	8 00	Lv Boston, via Portsmouth.....Ar			
1 20	9 00	" Boston, via Dover.....Ar	9 05		
6 40	12 05	" Portland.....Ar	5 25		
10 58	4 09	Ar Farmington.....Lv	1 50		
†11 40	†4 15	Lv Farmington.....Ar	1 30		
	f4 21	" Fairbanks.....Lv	f1 15		
	f4 36	" Maplewood.....Ar	f1 04		
	f4 38	" South Strong.....Ar	f1 02		
12 30		Ar Strong.....Lv	12 55		
1 15	4 45	Lv Strong.....Ar			
	f4 55	" Avon.....Lv	12 45		
†1 40	5 10	Ar Phillips.....Lv	12 30		
	5 10	Lv Phillips.....Ar	12 30		
		" Madrid.....Lv			
		" Reeds.....Ar			
		" Sanders.....Ar			
		" Perham Jct.....Ar			
	5 55	" Redington.....Ar	11 35		
		" Eustis Jct.....Ar			
		" Dallas.....Ar			
		" Dead River.....Ar			
	†6 35	Ar Rangeley.....Lv	†10 55		
P. M.	P. M.		A. M.		

Trains No. 4 and No. 5 will not run between Phillips and Rangeley after Saturday, October 15, 1927.

## FARMINGTON AND CARRABASSET

READ DOWN			READ UP		
†15	†3-	†19	†18	†20	
R	Mixed	R	R	Mixed	
A. M.	A. M.	A. M.	P. M.	P. M.	
	8 00	Lv Boston, via Portsmouth.....Ar			
1 20	9 00	" Boston, via Dover.....Ar	9 05		
6 40	12 05	" Portland.....Ar	5 25		
10 58	4 09	Ar Farmington.....Lv	1 50		
†11 40	†4 20	Lv Farmington.....Ar	†1 20		
	4 50	Ar Strong.....Lv	12 45		
1 30	4 55	Lv Strong.....Ar	12 35		
	f5 15	" Summit.....Lv	f12 05		
2 05	5 20	" Salem.....Ar	12 00		
	f5 25	" Mt. Abram Junction.....Ar	f11 55		
2 30	†5 40	Ar { Kingfield.....Lv	11 45		
†10 20	†2 40	Lv { Carrabasset.....Ar	11 40	†4 35	
†10d55	†3d15	Ar Carrabasset.....Lv	†11d10	†4 00	
A. M.	P. M.	P. M.	A. M.	P. M.	

### REFERENCES.

† Daily, except Sundays. f Stops on signal or on notice to Conductor.  
d Stage connections to and from Stratton, Eustis, Ledge House, Parson's Farm and Flagstaff. R Rail Motor Car.

The time 12.01 Midnight to 12.00 Noon is shown in light face type.  
12.01 Noon to 12.00 Midnight in dark face type.  
Trains are run on Eastern Standard Time.

## ROUND TRIP TICKETS AT REDUCED RATES BETWEEN ALL LOCAL STATIONS—GOOD FOR 30 DAYS

### DECLARATION OF VALUE OF BAGGAGE

Effective June 27, 1927, in accordance with tariff regulations, passengers will be required to declare in writing, on form prescribed, value of their baggage at time of checking.

### MAINE CENTRAL RAILROAD

Service Farmington and Portland.—Trains leave Farmington week days at 6.50 a. m. and 1.50 p. m.; Sundays at 2.20 p. m.  
Arrive Farmington week days at 10.58 a. m. and 4.09 p. m.; Sundays at 10.55 a. m.

### STATE OF MAINE EXPRESS

Service between Portland, Maine, and New York.—Trains leave Portland Union Station, daily, at 9.10 p. m., arrive New York, Grand Central Terminal, 7.36 a. m. Returning, leave New York 7.30 p. m., arrive in Portland 6.25 a. m., via New Haven, New London and Worcester.



## HOTEL STRONG, Strong, Maine

Situated on the State Road to Dead River and Rangeley regions. Newly furnished, broad piazza, excellent table. Steam heat, electric lights, etc.

One of the most inviting regions in the great State of Maine is the territory of Franklin County served by the Sandy River and Rangeley Lakes Railroad. Because of its natural allurements, its unparalleled scenery, its abundant fishing and hunting grounds, and its excellent hotel accommodations, this section has long been popular as a playground for the sportsman or tourist.

Exceptional opportunities are here offered for the location of manufacturing plants using forest products. Many prosperous industries are now located along the line of this railroad. The entire section is heavily wooded, its supply of hard wood especially being practically inexhaustible.

### ROLLIN' INTO KINGFIELD.

(Tune "Jingle Bells")

Rollin' into Kingfield on the Sandy River Line,  
By the silvery river's brim, through the spruce and pine:  
Buckin', snortin', twistin'—Oh boy, ain't it fine!  
Rollin' into Kingfield on the Sandy River Line.  
Steamin' like a kettle, as she climbs the ridge;  
Purrin' like a pussycat trundlin' 'cross the bridge;  
Roarin' through the moonlit night—Oh boy, ain't it fine!  
Rollin' into Kingfield on the Sandy River Line!  
Rollin' into Kingfield through the deep white snows;  
Hear the little engine sob as through the drift she ploughs,  
Battlin' through to victory—Oh boy, ain't it fine!  
Rollin' into Kingfield on the Sandy River Line!  
Red-hot stoves a' cracklin', drummers' pipes alight,  
Little lamps a' flarin' far into the night;  
Happy, warm, and cozy—Oh boy, ain't it fine!  
Rollin' into Kingfield on the Sandy River Line!  
Take horse, or car, or steamboat, travel far away,  
But the Sandy River Railroad o'er your heart holds sway;  
And when once more you come back—Oh boy, ain't it fine!  
Rollin' into Kingfield on the Sandy River Line!

—Charles G. Wilson, 1926.

Detailed information will be promptly furnished upon request to

**ARTHUR H. ROBINSON,**  
Traffic Manager and Auditor, Phillips, Maine.



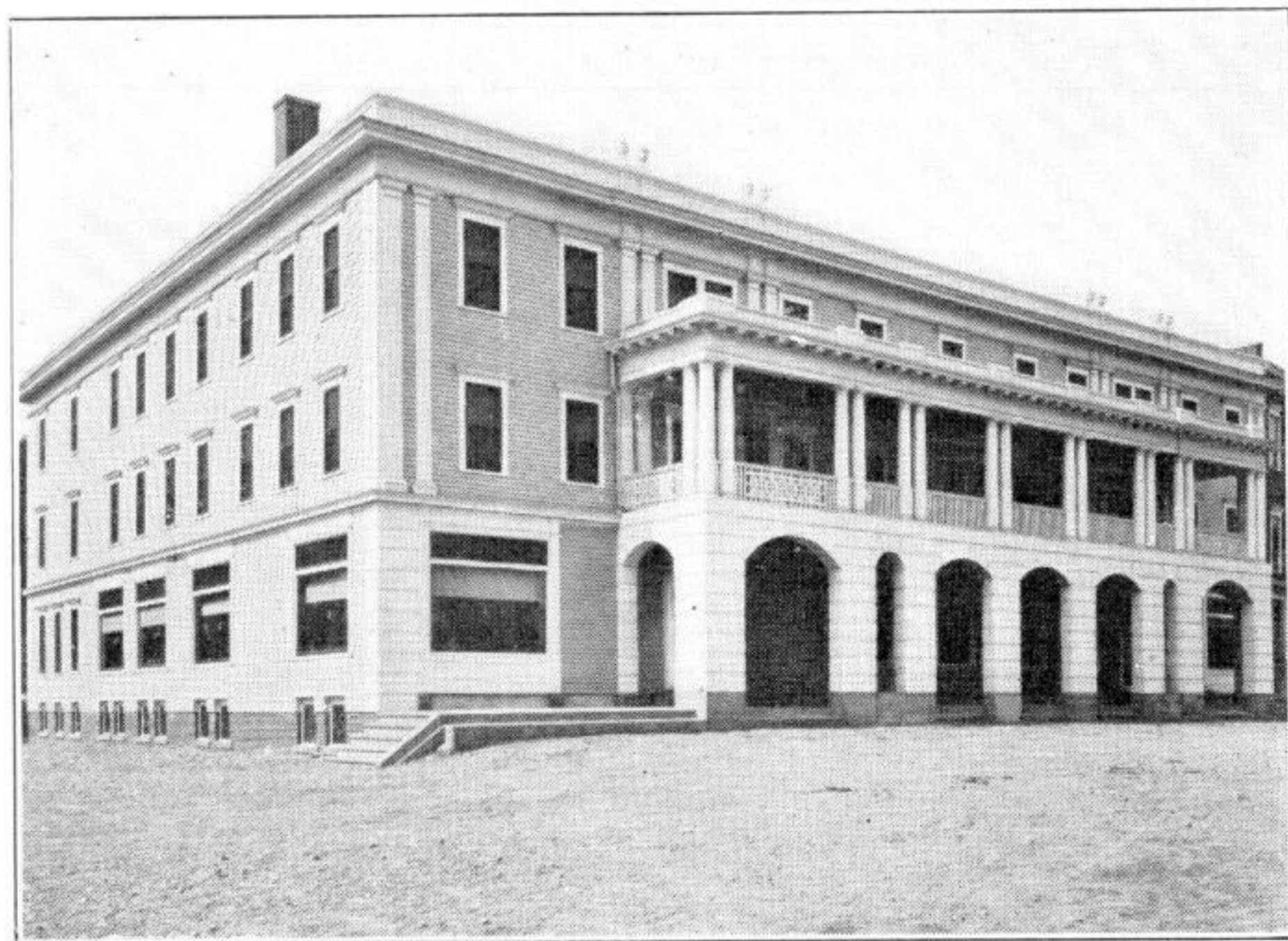


**ELMWOOD HOTEL,  
Phillips, Maine.**

On the direct route from Portland to the Rangeley Lakes. A quiet, homelike hotel where one can enjoy a real rest. Thoroughly modern and newly furnished. Rooms with private bath. A large stone fireplace adds to the comfort of the lobby. Cuisine is the best possible. Excellent hunting and fishing near by. An ideal location to spend your vacation. Write or telephone for reservations. American Plan. \$4.00 and up per day.

---

**KINGFIELD'S HOTEL**



**THE HERBERT**

**KINGFIELD, MAINE**

Located in the valley of the Carrabasset River at the foot of Mount Abram, 585 feet above sea level. Is famous as a health resort. Invigorating mountain air, pure water, steam heat, open fire in lobby, hot and cold water and telephone in every room.

**Open all the year for Summer Vacations and Winter Sports.**