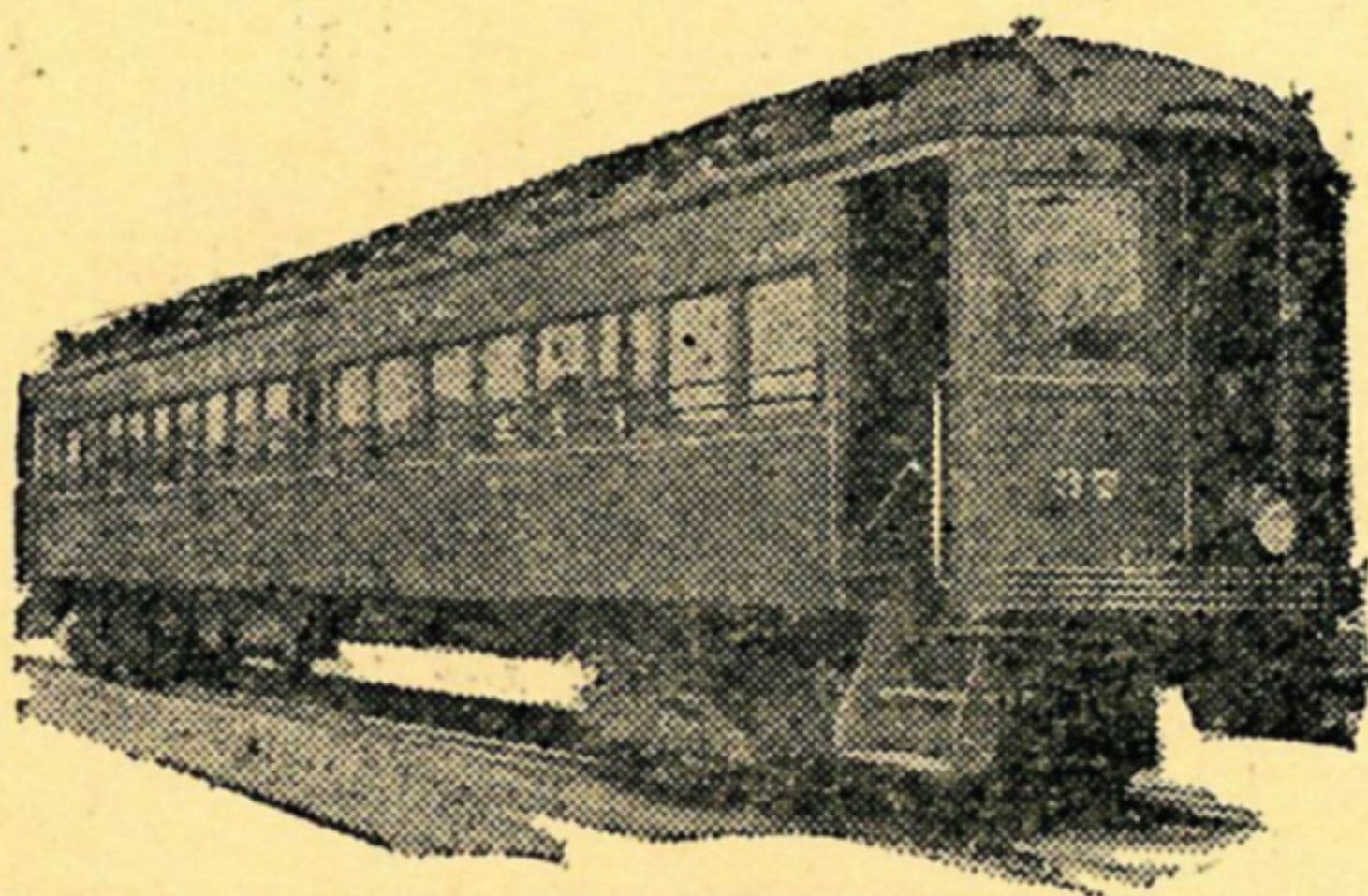


Lackawanna and Wyoming Valley R. R. Co.

LAUREL LINE



High Speed Electric Service

36 «« TRAINS »» 36
IN EACH DIRECTION

**SCRANTON
PITTSTON
WILKES-BARRE**

Stations are located in the heart of the city; directly adjacent to Lehigh Valley and Penna. R. R. Station in Wilkes-Barre and D. L. & W. R. R. Station in Scranton; also within two blocks of all local Transit and Bus Lines.

Sept. 15, 1947. Subject To Change Without Notice.

WEEK-DAY SERVICE

Scranton to Wilkes-Barre and Intermediate Stations			Wilkes-Barre to Scranton and Intermediate Stations		
A M	A M	P M	A M	A M	P M
1 00	10 30b	4 30	12 45	10 15	4 15
2 30	11 00	5 00	1 45	10 45	4 45b
4 00	11 30	5 30	3 15	11 15b	5 15
5 30	12 00b	6 00b	4 45	11 45	5 45
6 00	P M	6 30	5 40	P M	6 15
6 30	12 30	7 00	6 10	12 15	6 45b
7 00	1 00	8 00	6 45	12 45b	7 15
7 30	1 30	9 00	7 10	1 15	7 45
8 00	2 00b	10 00b	7 45	1 45	8 45
8 30	2 30	11 00	8 15	2 15	9 45
9 00b	3 00	12 00	8 45	2 45b	10 45b
9 30	3 30		9 15	3 15	11 45
10 00	4 00b		9 45b	3 45	

b—Carry Baggage and Package Express,
Subject to Change.

SUNDAY SERVICE

Scranton to Wilkes-Barre and Intermediate Stations			Wilkes-Barre to Scranton and Intermediate Stations		
A M	P M	P M	A M	P M	P M
1 00	12 30	7 00	12 45	12 15	6 45
2 30	1 00	8 00	1 45	12 45	7 15
4 00	1 30	9 00	3 15	1 15	7 45
5 30	2 00	10 00	4 45	1 45	8 45
6 00	2 30	11 00	6 15	2 15	9 45
7 00	3 00	12 00	6 45	2 45	10 45
8 00	3 30		7 45	3 15	11 45
9 00	4 00		8 45	3 45	
10 00	4 30		9 45	4 15	
10 30	5 00		10 45	4 45	
11 00	5 30		11 15	5 15	
11 30	6 00		11 45	5 45	
12 00	6 30			6 15	

FREQUENT BAGGAGE SERVICE

HOLIDAY SERVICE: Sunday Service will be operated on the following Holidays: Memorial Day, Fourth of July and Labor Day.

APPROXIMATE RUNNING TIME FROM SCRANTON AND WILKES-BARRE TO ALL STATIONS

Read Down Minutes	STATIONS	Read Up Minutes
0	‡— SCRANTON —	88
3	*— South Scranton —	85
5	*— Connell Junction —	83
6	*— Virginia —	82
9	‡— Rocky Glen —	29
10	*— Moosic —	28
13	*— Avoca —	26
14	*— South Avoca —	25
15	*— Heidelberg —	23
16	*— Dupont —	22
18	*— North Pittston —	19
20	‡— PITTSTON —	17
23	*— South Pittston —	16
24	*— Ewen —	15
25	*— Inkerman —	13
27	*— Number 14 —	11
28	*— Hilldale —	10
29	*— No. Plains —	9
30	‡— PLAINS —	8
32	*— Midvale —	6
35	*— River St. (W.-B.) —	3
38	‡— WILKES-BARRE —	0

‡Agency Stations †Private Station *Flag Stations

THRU FREIGHT AND PASSENGER INTER-CHANGE ARRANGEMENTS AT COMPETITIVE RATES are in effect between L. & W. V. R. R. and D., L. & W., Lehigh Valley, Erie and Penna. R. R. to and from all points in the United States.

FOUNTAIN-LUNCHEONETTE and NEWS STANDS at Scranton, Pittston (news stand only) and Wilkes-Barre Stations.

TAXICAB STANDS are located at Scranton, Pittston and Wilkes-Barre Stations.

LAUREL LINE TRANSPORTATION CO.

Motor Bus Highway Service

SCRANTON and PITTSTON (Via Moosic, Avoca and Dupont)

Lve SCRANTON WEEK-DAYS, Court House Square: (L. & W. V. Terminal 10 min. later) Every hour, on the hour—7:00 A.M. to 8:00 P.M., then 9:30, 10:30, 11:35 P.M. SUNDAYS: *8:05, *9:05 A.M., then every hour on the hour, 11:00 A.M. to 11:00 P.M. Last bus 12:00 midnight to Avoca only.

*L.&W.V. Terminal 25 min. later

Lve PITTSTON WEEK-DAYS (Broad and Main Sts.): Every hour on the hour, 6:00 A.M. to 7:00 P.M., then 8:30, 9:30, 10:30 P.M. SUNDAYS: 7:15, 8:15 A.M., 10:15 A.M., then every hour on the hour, 11:00 A.M. to 11:00 P.M.

SCRANTON and WILKES-BARRE (Via Moosic, Avoca and Dupont)

Lve SCRANTON WEEK-DAYS (Court House Square): 10:05 A.M., 4:00 P.M. SUNDAYS: 9:05 A.M., 1:00 P.M.

Lve WILKES-BARRE WEEK-DAYS (L. & W. V. Terminal): 8:50 A.M., 5:45 P.M. SUNDAYS: 11:45 A.M., 5:45 P.M.

Buses stop at L.&W.V. Scranton Terminal.

Frequent additional service is operated between Pittston, Dupont, Avoca and Moosic.

HOLIDAY SERVICE: Sunday Service will be operated on the following Holidays: Memorial Day, Fourth of July and Labor Day.