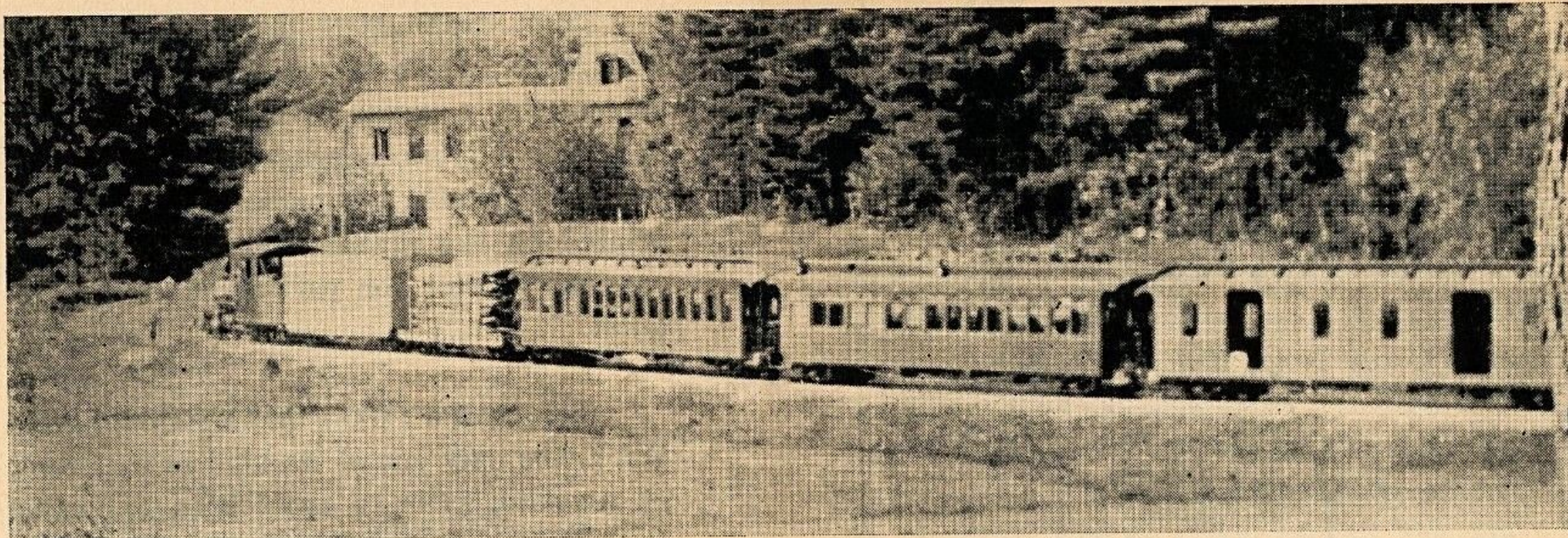


THE
BRIDGTON
AND
HARRISON
RAILWAY

ALL-YEAR SERVICE TO
BRIDGTON, ME.





A Narrow Gauge Train Entering Bridgton, Maine

BRIDGTON AND HARRISON RAILWAY CO.

TRAIN SCHEDULE

SOUTHBOUND				NORTHBOUND			
Mls.	Station	No. 1	No. 3	Mls.	Station	No. 2	No. 4
			Ex. Sun.				Ex. Sun.
0.0	*Bridgton	7:00 a. m.	4:45 p. m.	0.0	*Bridgton Jct.	9:26 a. m.	6:18 p. m.
2.2	Sandy Creek	7:06	4:51	2.0	Rankin's Mill	9:33	6:25
3.7	South Bridgton	7:11	4:56	4.4	Twin Lake	9:41	6:38
5.3	Ingalls Road	7:16	5:01	7.2	West Sebago	9:45	6:42
6.8	Perley's Mill	7:21	5:06	9.0	Perley's Mill	9:51	6:48
8.6	West Sebago	7:26	5:11	10.5	Ingalls Road	9:57	6:54
11.4	Twin Lake	7:35	5:20	12.1	South Bridgton	10:03	7:00
13.4	Rankin's Mill	7:43	5:28	13.6	Sandy Creek	10:09	7:06
15.8	*Bridgton Jct. Ar.	7:50 a. m.	5:35 p. m.	15.8	*Bridgton	Ar. 10:15 a. m.	7:12 p. m.

*Regular Stops. Other stops on signal or notice to conductor. The company is not responsible for delays. Train stops at Sandy Creek for South Bridgton.

Express service via B&H Ry. collect or prepaid. Call nearest American Railway Express Office for details of rates.

This is timetable No. 15, in effect July 1, 12:01 a. m., 1940.

M. E. HEATH, General Manager

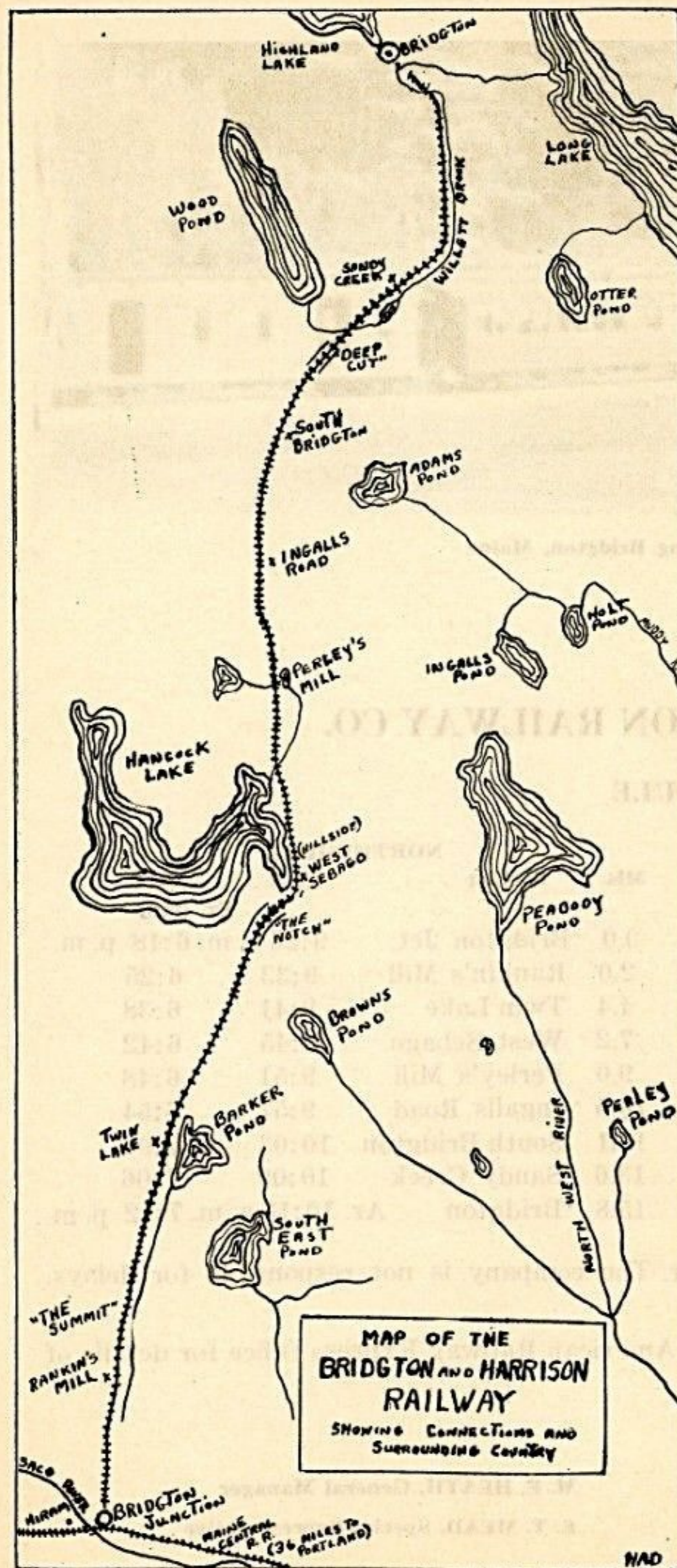
E. T. MEAD, Special Representative

"The soul of a journey is liberty, perfect liberty, to think, feel, do just as one pleases" quotes the summer tourist from the works of Hazlitt (On Going On A Journey), famous English writer of a former generation. BRIDGTON, in the center of the famous summer camp region of western Maine, is the fitting terminus to your journey. Consider, now, that Bridgton has many beautiful lakes—stocked with large fish and fine for boating, clear streams inhabited by sleek trout, and the magnificent Maine woods. In Bridgton Centre there are all the attributes of a perfect Down-east Yankee village—country clubs with their facilities, movie theaters; a bright, modern newspaper; cultural institutions, and up-to-date stores with everything pertaining to summer vacation life! It's no wonder that for many years Bridgton has been a favorite summer spot!

Bridgton is easily reached by railroad, for the BRIDGTON AND HARRISON RAILWAY maintains frequent, safe, economical service to Bridgton. Be sure always to ship your baggage and freight via this railroad.

C. Lester Ames President
 M. E. Heath General Manager
 E. L. Brown Chief Engineer
 E. T. Mead Special Representative
 F. H. Ropinske Western Representative

and a full staff worthy of a Bridgton owned and operated industry.



THE BRIDGTON AND HARRISON RAILWAY, which serves Bridgton and the surrounding country, is ready at all times to handle express, baggage, or freight matter. A timetable of passenger service is printed on the reverse, and there is "Excursion" service for parties on special request.

But this is a TWO FOOT GAUGE RAILWAY, the only one of its kind in the whole of America. It is 16 miles long, extending from Bridgton to Bridgton Junction on the Maine Central 36 miles from Portland. It was completed in 1883 as the Bridgton and Saco River Railroad. Much of the right-of-way passes through pine forests and along lake shores. This Narrow Gauge Railway has coaches and other equipment built in 1882 in regular service, and there are many other interesting innovations peculiar to this railroad, the only one of its kind in common carrier service in the country.

You should not miss this sight!

The "B&H" has, among its unusual but complete roster of equipment, two small steam engines. The newest was built 16 years ago, and weighs 40 tons. Compare this with standard gauge engines weighing 100 tons or more! Most interesting of the four quaint coaches are the "Pondicherry" and "Mt. Pleasant" which preserve in remarkable condition Victorian oddities. An up-to-date gasoline railtrain makes connections daily with the outside world. Forward looking merchants of Bridgton are proud to "SHIP VIA THE NARROW GAUGE"